

RSPO New Planting Procedures

Summary Report of Planning & Management
PT. Ketapang Agro Lestari

Report prepared by Wieke Savitri

TABLE OF CONTENTS

1. Executive Summary	3
2. Reference Document	4
List of Legal documents and regulatory permits related to the areas assessed	4
SEIA and HCV assessment reports	5
Location maps – both at landscape level and property level:.....	8
Area of new plantings and time-plan for new plantings	12
3. SEIA and HCV Management and Planning Personnel	13
Organisational information and contact Person	13
Personnel involved in Planning and Implementation	14
Stakeholder to be involved	15
4a. Summary of Management and Mitigation Plans (SEIA)	15
Mitigation plans to minimise negative for socio-economic impacts	15
Management plans to enhance socio-economic contribution	15
Mitigation plans for negative for environmental effects	16
Management plans to promote positive environmental effects.....	16
4b. Summary of Management and Mitigation Plans (HCV)	16
Plan for HCV monitoring and regular review of data	16
Management and mitigation plans for threats to HCV areas	16
Management plans to enhance or maintain conservation values of identified HCV area	17
5. Internal responsibility	18
Formal signing off management and mitigation plans	18

RSPO NEW PLANTING PROCEDURES

Summary Report of Planning and Management

PT. Ketapang Agro Lestari, Kutai Barat, East Kalimantan, Indonesia.

1. Executive Summary

PT. Ketapang Agro Lestari (PT. KAL) is a subsidiary of First Resources Ltd. The proposed new planting company PT. KAL is the legal entity under First Resources Ltd. as the operating holding company, which has been registered as a member of RSPO since March 11, 2008 with membership number 1-0047-08-000-00. The proposed new planting of PT. Ketapang Agro Lestari was assessed for compliance against the RSPO Procedures for New Oil Palm Planting (RSPO NPP) using the Guidance Document approved in September 2009 by the RSPO Executive Board for implementation from 1st January 2010.

The TUV NORD assessors team confirmed that the required legal documents such as Permitted Area (Ijin Lokasi), Plantation Development Permit (Ijin Usaha Perkebunan) and required environmental and social study documents such as AMDAL (SEIA) which consist of ANDAL, RKL/RPL, also SIA and HCV reports are available. PT. Ketapang Agro Lestari was established by Act No.41 dated on 22 June 2006 issued by Notary Jhonni Marihotua Sianturi, SH and legalized by Ministry of Law and Human Right No. C-21343 HT.01.01.TH.2006 dated on 20 July 2006. The proposed project area has obtained Permitted Area (Izin Lokasi) by Decree of Regent Kutai Barat No. 525.26/K.867/2009 dated on 28 October 2009 for PT Ketapang Agro Lestari with total area \pm 15.025 Ha located in Kiaq Village, Tendiq Village, Penawang Village and Lendian Liang Nayuq Village, Siluq Ngurai District, Kutai Barat Regency, East Kalimantan. Frame of Reference Environment Impact (KA-ANDAL) Kegiatan Perkebunan Kelapa Sawit dan Pabrik Minyak Sawit for PT. Ketapang Agro Lestari by Decree of Head of Environmental Agency Kutai Barat Regency No. 660.5/019.1/Komdal-KBR/XII/2009 dated on 26 December 2009. Approval of Kelayakan Lingkungan Hidup, ANDAL, RKL dan RPL Kegiatan Pembangunan Kebun dan Pabrik Minyak Sawit for PT Ketapang Agro Lestari by Decree of Regent Kutai Barat No. 660.5/007/AMDAL/BLH-KBR/VI/2010 dated on 22 June 2010. Technical Consideration from Forestry Agency East Kalimantan No.522.22/4627/DK-II/2010 dated on 23 August 2010, explained that the Decree of Regent Kutai Barat No. 525.26/K.867/2009 dated on 28 October 2009 with total area 15,025 ha should be revised regarding to the study of the status and the function of forest area, thus the recommended area is 14,440.12 ha which is classified as Non Kawasan Hutan/ APL or Other Usage Area, in accordance with Maps of Forestry and Waters Area of East Kalimantan as attachment Letter of Forestry Ministry No. 79/Kpts-II/2001 dated on 15 March 2001. Plantation Development Permit (Ijin Usaha Perkebunan) Kelapa Sawit for PT Ketapang Agro Lestari by Decree of Regent Kutai Barat No. 525.26/K.941a/2010 dated on 22 November 2010 with total area 14.440,12 Ha. Revision of Permitted Area No. 525.26/K.867/2009 by Decree of Regent Kutai Barat No. 525.29/K.1013/2011 dated on 25 November 2011, whilst the first permitted area was \pm 15.025 Ha and has been revised to be \pm 14.440,12 Ha.

PT. Ketapang Agro Lestari is ready to implement the recommended environmental and social management plan as specified in the High Conservation Value (HCV) and Social and Environmental Impact Assessment (SEIA) report. The Social Environmental Impact assessment was done separately. The Social Environmental Impact Assessment in the form of AMDAL documents which consist of ANDAL, RKL/RPL was done by CV. Unitech Cipta Mandiri, a government approved EIA consultant. HCV assessment was done by RSPO approved HCV assessors from YASBI in July 2011, whilst SIA assessors from Department of Forest Resources Conservation, Bogor Agricultural University (IPB) in February 2012 to conduct and prepare the necessary assessments and documents to comply with RSPO new planting documents to carry out the New Planting Procedure announcement.

2. Reference Documents

The list of reports as reference documents :

- a. AMDAL document was approved by Decree of Regent Kutai Barat No. 660.5/007/AMDAL/BLH-KBR/VI/2010 dated on 22 June 2010.
- b. The HCV Identification document is in the report "HCV Assessment report for PT. Ketapang Agro Lestari", July 2011 by YASBI,
- c. The SIA report is in "SIA Assessment report for PT. Ketapang Agro Lestari", February 2012 by Faculty of Forestry, Bogor Agricultural University (IPB)
- d. Land release and compensation records.
- e. Minutes of Meetings with Communities on Public awareness of the Project (FPIC- Free Prior and Informed Consent)
- f. The oil palm development plan of PT. Ketapang Agro Lestari.

List of Legal documents and regulatory permits have been obtained by PT. Ketapang Agro Lestari related to the areas assessed:

No	Type of Licenses	Issued by	Number and Date
1	Act of Establishment	Notary Jhonni Marihotua Sianturi, SH	No.41 dated on 22 June 2006
2	Legalization Act of Establishment	Ministry of Law and Human Right of Republic Indonesia	No. C-21343 HT.01.01.TH.2006, dated on 20 July 2006.
3	Permitted Area	Regent of Kutai Barat	No. 525.26/K.867/2009, dated on 28 October 2009
4	Frame of Reference Environment Impact (KA-ANDAL)	Head of Environmental Agency Kutai Barat Regency	No. 660.5/019.1/Komdal-KBR/XII/2009, dated on 26 December 2009.
5	Approval of Kelayakan Lingkungan Hidup, ANDAL, RKL and RPL	Regent of Kutai Barat	No. 660.5/007/AMDAL/BLH-KBR/VI/2010, dated on 22 June 2010.
6	Technical Consideration of Status of Forest and Waters Area	Forestry Agency East Kalimantan	No.522.22/4627/DK-II/2010 dated on 23 August 2010,
7	Plantation Development Permit	Regent of Kutai Barat	No. 525.26/K.941a/2010, dated on 22 November 2010
8	Revision of Permitted Area	Regent of Kutai Barat	No. 525.29/K.1013/2011. dated on 25 November 2011

SEIA and HCV assessment reports.

The scope of both the Social and Environmental Impact Assessment (SEIA) and the High Conservation Value (HCV) assessment of PT.KAL cover the local social entities within the Permitted Area (Ijin Lokasi) and it is also expanded into villages and other areas which are considered important to the surrounding area.

The AMDAL (SEIA) document included consideration of both negative as well as positive social and environmental impact. The scope of the AMDAL included assessment of impacts associated with land development, infrastructure, road access mill operations and transportation. The AMDAL included assessment of the suitability of soils, topography and drainage and analysis of the land cover vegetation. The AMDAL assessed the impacts on natural ecosystems and water resources.

HCV and SEIA assessment also identified that there is no primary forest, no peat area, all local people's land has been identified and the land acquisition resolution with free prior and informed consent. A small part of secondary forests are found within the permitted area boundary of PT. Ketapang Agro Lestari in Penawang Village and Lendian Village. Five types of HCVs identified within the permitted area of PT Ketapang Agro Lestari, with the total indicative HCV area of 663.84 ha are HCV 1, 100 ha are HCV 2, 663.84 ha are HCV 4, 415.5 ha are HCV 5 and 1.53 ha are HCV 6. However, some of HCV area are overlapping with other HCV area, thus, the total of HCV area are 992.94 ha. There are six protected vegetation identified such as Beremiring/ meranti batu (*Shorea uliginosa* Foxw), Durian hutan/ pekawai (*Durio kutejensis* Becc.), Jelmu / lemonu (*Canarium pseudodecumanum*), Meranti merah/ jawar (*Shorea ovalis*), Meranti putih/ lempung (*Shorea lamellata*), Ulin/ teluyan (*Eusideroxylon zwageri* T.et B). There are 14 species of protected wildlife animals identified. Elements for HCV 1 are the existence of secondary forest in Hutan Penawang, Penawang freshwater spring, riparian Tuang River, and riparian Kiaq River that double up as a corridor for IUCN Endangered species such Trenggiling/ Sunda Pangolin (*Manis javanica*), IUCN Vulnerable species such as Beruang Madu/ Malayan Sun Bear (*Helarcotos malayanus*), Beruk (*Macaca nemestrina*), Rangkong badak/ Horn bill (*Buceros rhinoceros*) Enggangklihingan (*Anorrhinus galeritus*) and Tiong emas (*Gracula religiosa*) are also present. Element for HCV 2 is the existence of secondary forest in Hutan Penawang. Elements for HCV 4 are freshwater spring in Penawang, water catchment and riparian Tuang River, and riparian Kiaq River. These riparian reserves have good forest covers and can become effective fire barrier. Element of HCV 5 is Hutan Lendian, elements for HCV 6 are public cemeteries in Penawang Village, Lendian Lian Nayuq Village and Tendiq Village.

The SIA assessment by Faculty of Forestry, IPB highlighted that the existence of PT. Ketapang Agro Lestari will have significant social impacts and how the business management influences the key issues in every component of the social sustainability of local community. There are seven strategic issues identified regarding social, economical and environmental aspects :

1. Land tenure problems (villages boundaries are not clear)
2. Education level is low
3. Lack of skill and knowledge in agriculture practices.
4. Environmental problems (sanitation and clean water availability)
5. Lack of business opportunities
6. Lack of job opportunities
7. Lack of capital and economical institution.

PT.Ketapang Agro Lestari has used information from the AMDAL, the HCV assessment and SIA and information from stakeholder meetings to prepare a management plan to deal with social and environmental aspects and impacts. As a result, TUV NORD assessor team confirmed that the assessment and plan are comprehensive and compliant to the RSPO New Planting Procedure.

Assessor of AMDAL

The AMDAL document of PT. Ketapang Agro Lestari was prepared by independent and government approved consultant CV. Unitech Cipta Mandiri, the team members include :

1. Team Leader : Fachruddin Azwari, ST, MSi S2 Environmental Science,
2. Head of Sub Team Geo-Physic Chemistry : Ir. Junser Naibaho, Msi Environmental Science
3. Team member : Desiana, SP, MSi S2 Agriculture
4. Head of Sub Team Biology : Ir. Sulaeman, MP S2 Forestry
5. Team member : Agus Nurhadi, S Hut S1 Forestry
6. Head Sub Team Social: Hariyani S Sos S1 Social and Politics
7. Head of Sub Team Public Health :dr. Rivia Gina Rahmawaty S1 Medical prractioner.

Assessor of HCV

The HCV assessment was carried out by an independent consultant from YASBI in July 2011. The team members consist of consultant accredited and approved by the RSPO includes:

1. Ir. Purwo Susanto

As Lead Trainer and Team Coordinator. Graduated from Faculty of Agriculture University Islam North Sumatera, now as the Executive Director Yayasan Kelapa Sawit Berkelanjutan Indonesia (YASBI) and the Deputy of HCV_RIWG (*RSPO Indonesia Working Group*) to establish HCV Management and Evaluation Guidance in Oil Palm Plantations in Indonesia. Member of *HCVF Network* Indonesia one of *Executive Board RSPO* (2007-2008). A former National Coordinator *Forest Conversion Program World Wide Fund for Nature* (WWF) Indonesia, to support *Best Management Practices* (BMP's) and *High Conservation Value Forest* (HCVF) in oil palm plantation (2003-2009). Have been educated and trained for conservation both in Indonesia and in overseas, involving with RSPO since the beginning. Have conducted training HCVF for about 50 oil palm companies in Indonesia since 2005.

2. Neny Indriyana, S.Hut, MT

As Field Coordinator. Holds Master degree in Industrial Engineering from University of Indonesia and Bachelor degree from Faculty of Forestry, Bogor Agricultural University (IPB). Working experience as an Operational Manager in forestry company PT. Hargas Industries Indonesia, as a Supervisor in state-owned company PT. Inhutani III. Has become a consultant since 2004, she conducts Performance Appraisal in Ecology of Sustainable Natural Forest Management (PHAPL) in Kalimantan and Sulawesi. Besides conducts Gap Analysis for some Oil Palm Plantations and Palm Oil Mill units against RSPO Principle & Criteria in North Sumatera, she also conducts HCV assessments in some oil palm plantations units in North Sumatera, South Sumatera, Riau, Bengkulu, West Kalimantan, South Kalimantan, East Kalimantan and Central Kalimantan.

3. Wawan Gunawan, S.Hut., M.Si.

Team member in Biodiversity aspects. Holds Master degree in Natural Resources and Environmental Management from IPB and Bachelor degree from Faculty of Forestry, IPB and now become a candidate for Doctoral degree in Natural Resources and Environmental Management from IPB. A researcher staff in Loka Litbang Satwa Primata (now Balai Penelitian Teknologi Perbenihan Samboja). Granted for scholarships from Eaurpean Union Eropa/Asialink Project "*Forest Restoration and Rehabilitation in Southeast Asia (FORRSA)*" to join the *visiting student program* for 3 months in *Department of Forest Ecology of the University of Helsinki*, Finland. As an active researcher staff in various biodiversity conservation researches, conservation area management, forest restoration and rehabilitation. He also conducts some evaluation conservation area management activities and HCV assessments for oil palm plantations in Central Kalimantan, South Kalimantan, West Kalimantan and South Sumatera.

4. Iswan Dunggio, SP, M.Si

A candidate in Doctoral degree in Forestry from IPB, holds Master degree in Forestry from IPB and Bachelor degree in Agriculture from University Sam Ratulangi Manado. Now working as lecturer and researcher staff in University Gorontalo. Granted for scholarships from *Miriam Rostchild Foundation* and as apprentice and researcher in *Wildlife Conservation Research Unit (WILDCRU)* University of Oxford and *Imperial College of Conservation Science (ICCS)* Imperial College London UK in 2009. In 2004 LSO granted for research scholarships from *Darwin Initiative Institute* London, UK to conduct research in Suaka Margasatwa Nantu Gorontalo. Has been involved in some consultation activities such as ecology aspect of Performance Appraisal of Sustainable Natural Forest Management (PHAPL) in East Kalimantan, HCV assessment in oil palm plantation in South Kalimantan and South Sumatra. Some of his works have been published in accredited science journals and presented in posters in *Student Conference on Conservation Science (SCCS)* at University of Cambridge UK in 2009.

5. Bukti Bagja S.Hut, Msi

Team member in Ecology aspect in HCV assessment. Holds a Bachelor degree from Forest Resources Conservation Department, Faculty of Forestry, IPB, now is studying for Master degree in Environmental Science at University Indonesia. Having experience as a consultant for various projects of *Japan International Cooperation Agency (JICA)* in partnerships with PT. Mitrapacific Consulindo Internasional. As an ecology aspect assessor in PHAPL for PT. Forest Citra Sejahtera (FOCUS) and for PT. Centra Multicon Jaya in 2007. As a GIS specialist for PT. Mitrapacific Consulindo Internasional from 2001 – 2007, and as an expert in various project in GIS such as Forestry Information System Development based on GIS in Aceh from 2008-2010 with ADB loan by the scheme *Earthquake and Tsunami Emergency Support Project*, also Marine Spatial Database Development in South Bangka Regency. Conducts some HCV assessment in oil palm plantation in South Sumatera, Bengkulu, West Kalimantan and South Kalimantan.

6. Keni Sultan, SPt, Msi

Graduated from Faculty of Veterinary, IPB in 2004, and holds Master degree in Primatology, IPB, majoring in primata conservation. He has been working for three years in some research project for Hibah Pasca DIKTI-IPB. As research assistant for some research projects in conservation, such as owa jawa in Mount Slamet, project from National Geography and social community research in villages around Taman Nasional Gunung Gede Pangrango.

Assessor of SIA

The SIA assessment was carried out by an independent consultant from Faculty of Forestry, Bogor Agricultural University (IPB) in February 2012.

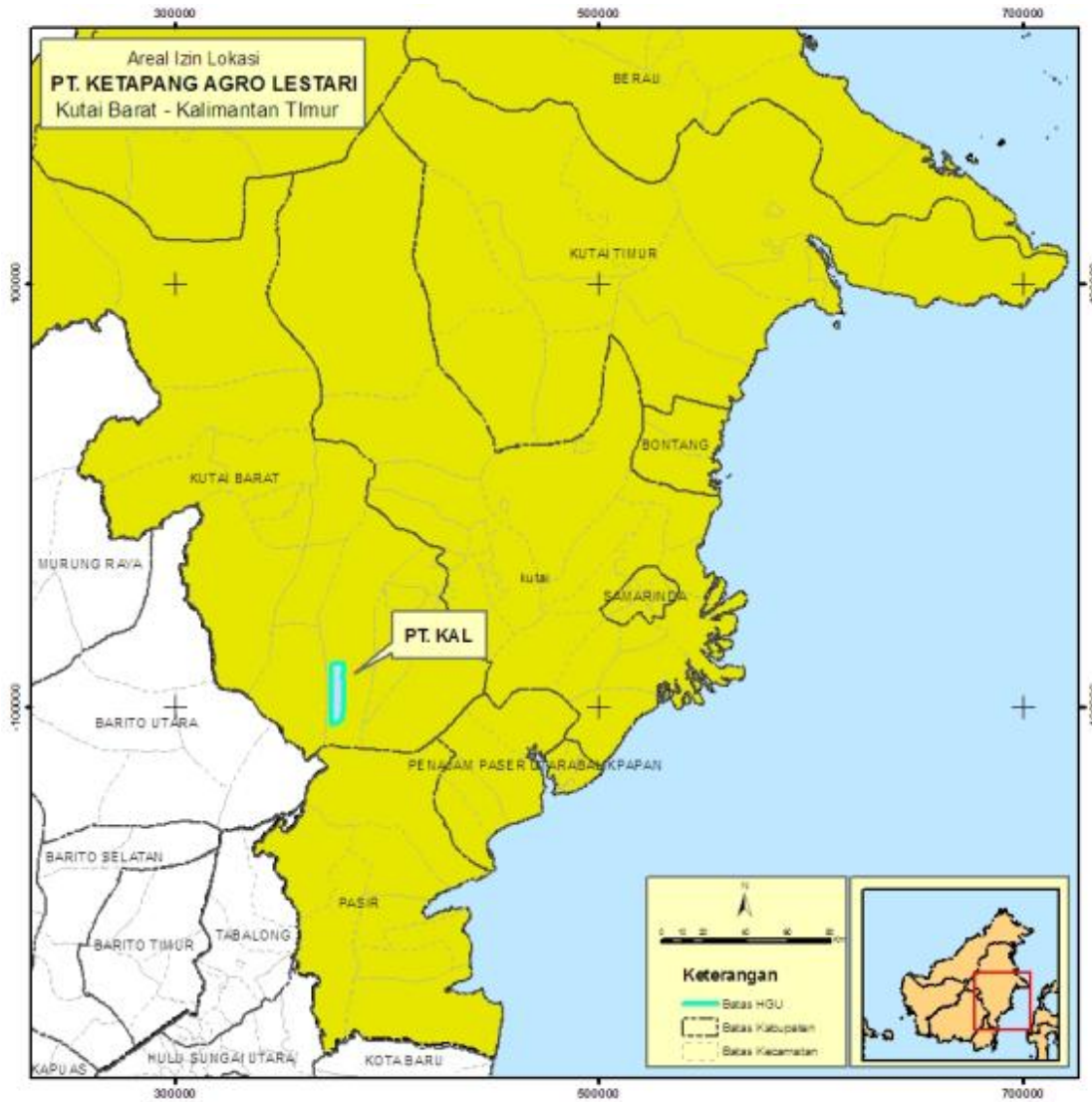
Team Leader : Dr. Ir. Nyoto Santoso, MS

Team member :

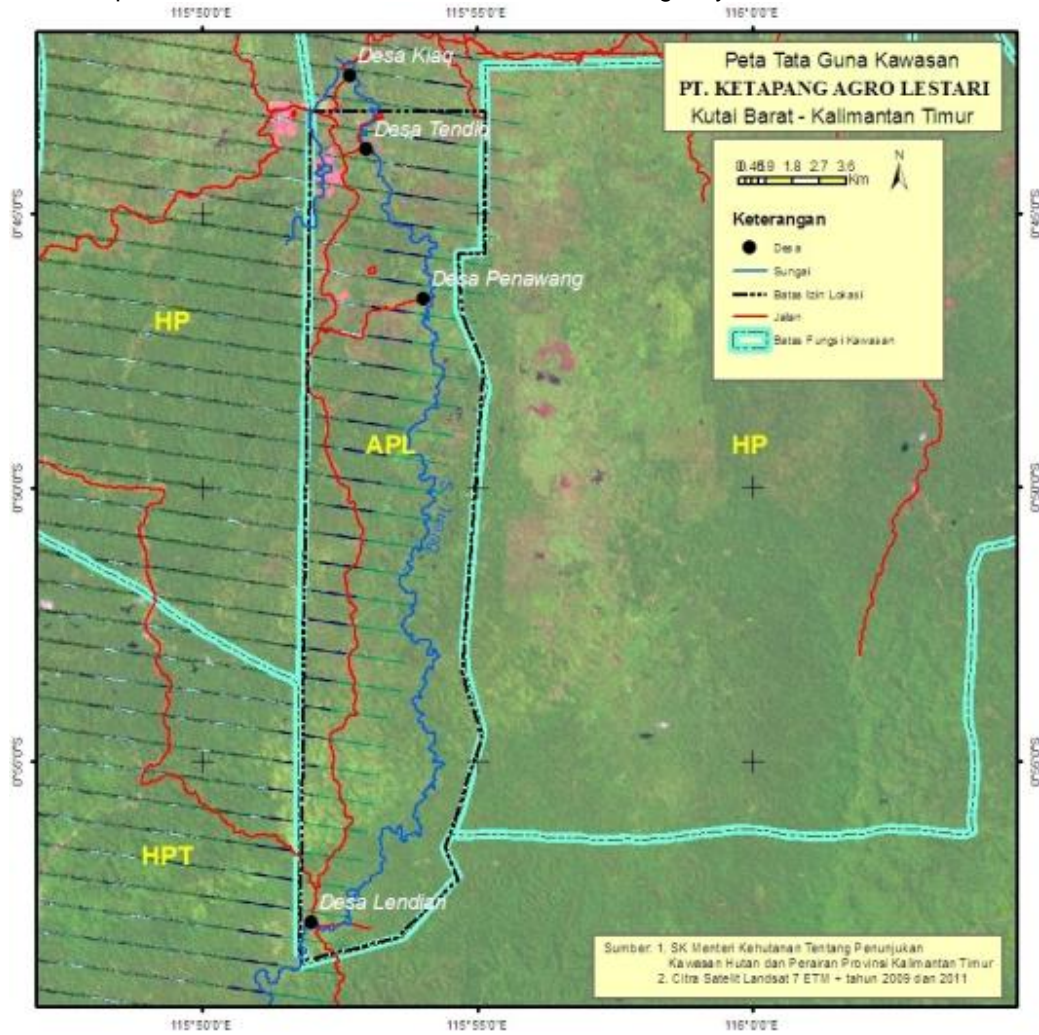
1. Ahmad Faisal Siregar, S.Hut
2. Yani Silfariani, SE, Msi
3. Sulfan Ardiansyah, S.Hut
4. Gilang Prastya Pambudi, S.Hut
5. Trismadi Nurbayuto, SE

Location maps – both at landscape level and property level.

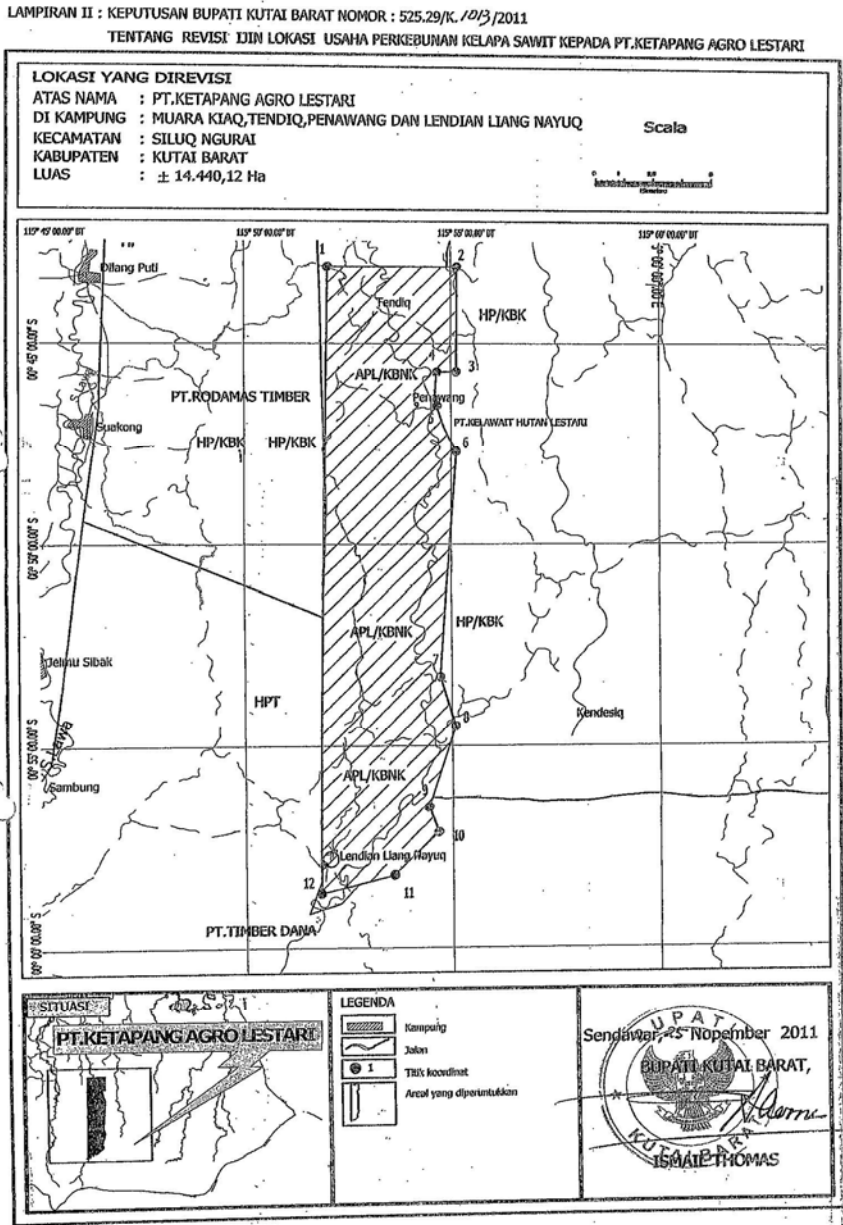
a. Maps of PT. KAL Location in East Kalimantan



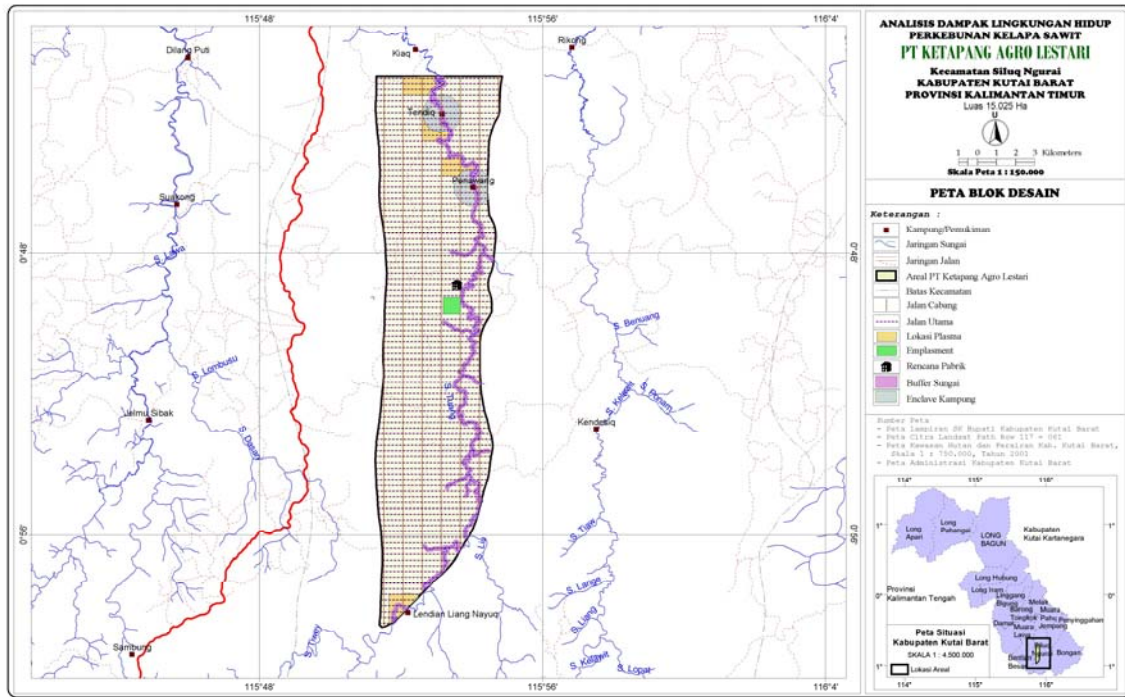
b. Maps Land Use Area of PT. KAL in Kutai Barat Regency



c. Maps of Permitted Area No. 525.29/K.1013/2011. dated on 25 November 2011



d. Maps Block Design of PT. KAL



Area of New Plantings and Time-plan for New Plantings.

The proposed new planting area by PT Ketapang Agro Lestari is within the Permitted Area (Ijin Lokasi) which have been agreed by the owners of the land (Report on Land Compensation of PT. Ketapang Agro Lestari) and the area does not contain forests nor any high conservation values. In accordance with the operational management data of PT. Ketapang Agro Lestari, the total estimated new planting area is approximately 12,488.18 ha, comprised of 9,990.54 ha inti (nucleus estates) and 2,497.64 ha plasma estates (smallholders) in order to contribute some income for the community and to maintain harmonious relationship with the local community. The development of plasma plantation in partnership program as stated in document “*Naskah Kerjasama Pembangunan Perkebunan Kelapa Sawit Program Kemitraan*” dated on 11 October 2010. The proposed time-plan for new planting will commence in April 2012 after receiving notification from CB. The progress of new plantation development is in compliance with RSPO New Planting Procedure.

Activity	2012 (ha)	2013 (ha)	2014 (ha)	2015 (ha)	TOTAL (ha)
1. Land Clearing					
Inti (Nucleus Estates)	1,680.00	2,912.00	3,782.16	1,616.38	9,990.54
Plasma (Smallholders)	420.00	728.00	945.54	404.10	2,497.64
Total Land Clearing	2,100.00	3,640.00	4,727.70	2,020.48	12,488.18
2. Nursery	420,000.00	728,000.00	945,540.00	404,096.00	2,497,636.00
3. Planting					
Inti (Nucleus Estates)	1,500.00	3,000.00	4,000.00	1,490.54	9,990.54
Plasma (Smallholders)	375.00	750.00	1,000.00	372.64	2,497.64
Total Planting	1,875.00	3,750.00	5,000.00	1,863.18	12,488.18

The total land compensated area as of November 2011 are 4,762.36 ha in Penawang Village and in Lendian Liang Nanyuq Village whilst in other villages are still in progress of verification and measurement by independent team from community groups. PT. Ketapang Agro Lestari has established SOP “*Prosedur Pembayaran Tali Asih Pembebasan Lahan*” or Land Acquisition and Calculation dated on 18 January 2010. The TUV NORD assessor team conclude that PT. Ketapang Agro Lestari carry out the land acquisition resolution with free prior and informed consent based on SEIA report and Minutes of Meetings with Communities on Public awareness of the Project.

3. SEIA and HCV Management & Planning Personnel

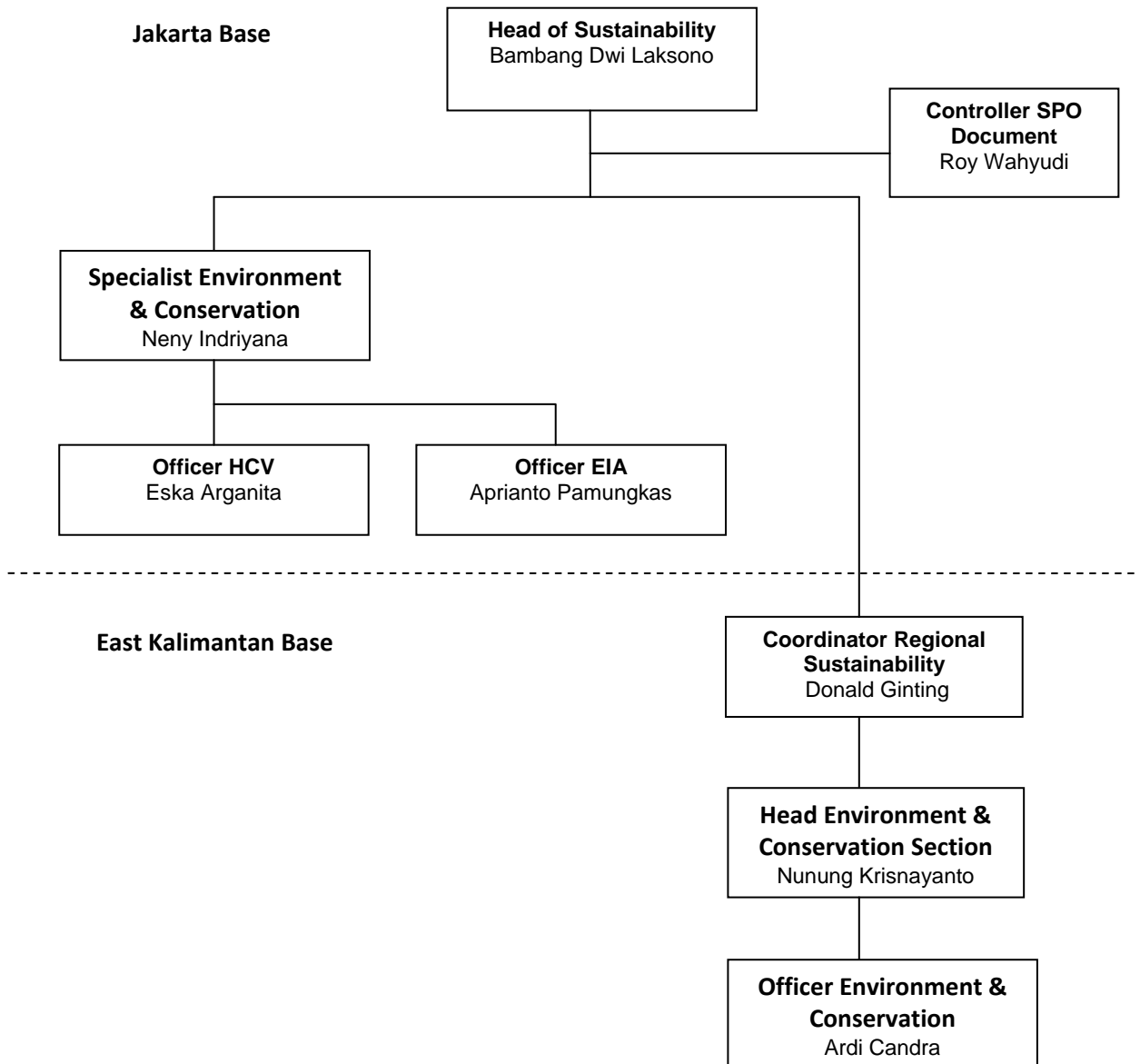
Organisational information and contact persons.

3.1. General Data of the Company

Company Name	PT.Ketapang Agro Lestari, a subsidiary of First Resources Ltd.
Capital Status	Domestic Investment Company (PMDN)
Act of Establishment	No.41 dated on 22 June 2006 issued by Notary Jhonni Marihotua Sianturi, SH, legalized by Ministry of Law and Human Right of Republic Indonesia No. C-21343 HT.01.01.TH.2006 dated 20 July 2006
Tax Notification Number	02.520.566.7-031.000
Company Address	APL Tower –Central Park, 28th Floor Podomoro City, Jl. Letjen. S.Parman Kav.28, Grogol-Petamburan, Jakarta Barat, Indonesia (Corporate Office) Jln.Jend.Sudirman Blok A 12 RT.007 Kel.Kelandangan Ilir-Balikpapan 73113 (Regional Office)
Type of Business	Oil Palm Plantation and Processing
Status of business land	Permitted area (Izin Lokasi) by Decree of Regent Kutai Barat No. 525.29/K.1013/2011 dated 25 November 2011, total area 14,440.12 ha Plantation Development Permit (Izin Usaha Perkebunan) by Decree of Regent Kutai Barat No. 525.26/K.941a/2010 dated 22 November 2010, total area 14,440.12 ha
Contact Person	Director – Azaria Yoga Prasetyanto Corporate Sustainability Head – Bambang Dwi Laksono Email Address: bambang.dwilaksono@first-resources.com
Geographical Location	00°43'07" – 00°58'41" South Latitude 115°51'47" – 115°55'08" East Longitude
Region Boundaries	
North side	PT. Munte Waniq Jaya Perkasa
South side	PT. Timber Dana
West side	PT. Roda Mas
East side	PT. Kelawit

Personnel involved in planning and implementation.

Findings from HCV and SIA assessment and recommendation are integrated within the operational management plan of the Group. The implementation of management and monitoring of the HCV and SEIA mitigation plans will be managed under the direction of Head of Sustainability in Jakarta Base which is supported by Contoiller SPO Document and Specialist Environment and Conservation, Officer HCV and Officer EIA. .In East Kalimantan Base by Coordinator Regional Sustainability, supported by Head Environment & Conservation Section and Officer Environment & Conservation. The organization chart is shown below.



Stakeholders to be involved.

Local communities that are affected by the development of PT. Ketapang Agro Lestari as identified in the Social Impact Assessment report. Relevant government departments will also be involved, such as :

- a. Local communities located inside and around the licensed area of PT. Ketapang Agro Lestari:
 - Kiaq Villagers
 - Tendiq Villagers
 - Penawang Villagers
 - Lendian Lian Nayuq Villagers
- b. The Head of relevant villages
- c. Local Government Agencies, District Government Agencies

4a. Summary of Management and Mitigation Plans (SEIA)

SEIA Assessment for PT. Ketapang Agro Lestari was conducted by a government accredited EIA consultant CV. Unitech Cipta Mandiri, which also prepare management and mitigation plans. The AMDAL document was approved on 22 June, 2010 by Decree of the Regent Kutai Barat No. 660.5/007/AMDAL/BLH-KBR/VI/2010. The Top management of PT. Ketapang Agro Lestari are committed to accomplish the environmental management plans and has issued decrees and policy such as:

- SK CEO tentang penetapan kawasan HCV (Decree of HCV area establishment).
- SK CEO tentang pembukaan lahan yang berwawasan lingkungan dan konservasi (Decree of land clearing in environmental and conservation conduct)
- SK Kebijakan Lingkungan dan K3 (Decree of Environmental, Health and Safety Policy).

The SIA development and preparation of management & monitoring plans for PT. Ketapang Agro Lestari was based on the findings conducted in February 2012 by Assessors Team from Faculty of Forestry, IPB. There are seven strategic issues identified regarding social, economical and environmental aspects :

1. Land tenure problems (villages boundaries are not clear).
2. Education level is low
3. Lack of skill and knowledge in agriculture practices.
4. Environmental problems (sanitation and clean water availablility)
5. Lack of job opportunities
6. Lack of business opportunities
7. Lack of capital and economical institution

Mitigation plans to minimise negative for socio-economic impacts.

PT. Ketapang Agro Lestari has develop mitigation plans to minimise negative for socio-economic impacts. The potential negative impacts include: the behavior of an increasingly consumerist society, the increasing land conflicts between people due to the increasing value of land, changing patterns of community livelihoods, and social disparities between indigenous communities and the migrants. The mitigation plans are :

- Survey with the related parties in on definitive delineation of land ownership
- Development of alternative income generating activities to safeguard their economic standing after post-development of the project.

Management plans to enhance socio-economic contributions.

PT. Ketapang Agro Lestari has develop managment plans to enhance socio-economic contributions. The steps taken in the SEIA development and preparation of management & monitoring plans are:

- Improvement on the level of community education
- Increase local communities awareness of good agricultural practice

- Employment and the creation of new jobs
- Create a community development program through a communication forum

Mitigation plans for negative environmental effects

The environmental issues in the study area is potentially the reduction of river water quality, also decreasing of air quality and increasing noise level if the mill starts to operate. PT. Ketapang Agro Lestari has developed mitigation plans for potentially negative environmental effects :

- Conduct water quality testing, air quality testing and noise testing regularly as required by government regulation.

Management plans to promote positive environmental effects

The presence of PT. Ketapang Agro Lestari is to expected by local community has positive environmental effects to provide clean water and protect the water resources that have been delineated in HCV area.

4b. Summary of Management and Mitigation Plans (HCV)

Plan for HCV monitoring and regular review of data.

The HCV monitoring and review plan is aimed to evaluate whether the activities implementation are as expected and whether the outputs of the process are as per targets; and whether the resources investments (human, fund, time) are as per plan.

Management and mitigation plans for threats to HCV areas

Management and mitigation plans for HCV 1 and HCV 2

- Issue CEO decree for HCV establishment area and SOP to manage and to monitor HCV area.
- Conduct awareness campaign to all plantation and surrounding community, about the existence of the entire HCV
- Create a definitive map of HCV
- Conduct delineation of the entire area of HCV as identified and put up signboard identifying HCV area, together with photos of protected species and with clear warning of consequences of illegal hunting
- Conduct delineation of the entire area of HCV as referred and put up riparian signboard of buffer zone surrounding the area of the identified HCV (50 m for river with length < 30 m, 100 m for river with length > 30 m, and radius 200 m around springwater) with clear warning of consequences of illegal hunting, illegal fishing (poisoning, using electricity and explosive), prohibition to use agro-chemicals along buffer zone
- Do not build roads, canals and other infrastructures in HCV area
- Do not build plantation in HCV area
- Conduct regular monitoring to the presence of identified protected species
- Conduct enrichment planting/ rehabilitation for HCV area which have low vegetation coverage.

Management and Mitigation plan for HCV 4

- Define the water catchment area as water resources for local community.
- Conduct delineation of the entire area of HCV as referred and put up riparian signboard of buffer zone surrounding the area of the identified HCV (50 m for river with length < 30 m, 100 m for river with length > 30 m, and radius 200 m around springwater) with clear warning of consequences of illegal hunting, illegal fishing (poisoning, using electricity and explosive), prohibition to use agro-chemicals along buffer zone.
- Implement policies and/or SOP to regulate the use of agro-chemical and waste management and conduct publication and awareness campaign on the SOP.
- Do not build roads, canals and other infrastructures in HCV area.
- Testing and analyze the water quality regularly.
- Implement Zero burning policy during land clearing activity

Making our world safer

- Identify areas that are prone to fires and preserve fire barrier area
- Establish procedure of emergency responses and preparedness to land burning and provide fire extinguishers and facilities.

Management and Mitigation plan for HCV 5

- Communicate with local community around Lendian Secondary Forest to utilize forest product in sustainable manner.
- Put up signboard identifying the types of HCV area, with clear warning of consequences of illegal hunting, illegal logging and excessive harvesting of forest products.

Management and Mitigation plan for HCV 6

- Conduct delineation of the entire area of HCV as identified and put up signboard identifying HCV area and protect the area together with local community.
- Provide free access to local community towards the area of Public Cemetery.

Management plans to enhance or maintain conservation values of identified HCV areas

The process of Strategic Mapping, the Practical Vision was adopted in defining the Basic Targets. Those Basic Targets included six items to be achieved through the efforts of HCV management as follow:

1. The existing areas with key animals in the proposed area are conserved,
2. The sustainability of the local habitats is reserved,
3. The river banks function as the hydrological buffer (the protection for water cycle), ecology (the protection for wildlife species) is maintained,
4. The erosion risk and fire risk is managed and controlled,
5. Conserve water catchments areas
6. Preserve the local graveyards and cultural sites.


5. Internal responsibility

Formal signing off of management and mitigation plans.

INTERNAL RESPONSIBILITY
Formal Signing Off by Assessors and Company

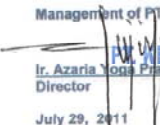
This document is the summary of HCV (High Conservation Value) Assessment in PT. Ketapang Agro Lestari and has been approved by the Management of PT. Ketapang Agro Lestari

Indonesian Sustainable Palm Oil Foundation (ISPO/YASBI),



PurwoSusanto
Team Leader of HCV Assessment
July 29, 2011

Management of PT. Ketapang Agro Lestari




PT. KETAPANG AGRO LESTARI
Ir. Azaria Yoga Prasetyanto
Director
July 29, 2011

Statement of acceptance of responsibility for assessments

Assessment result document on High Conservation Value (HCV) Assessment of PT. Ketapang Agro Lestari by Indonesian Sustainable Palm Oil Foundation (ISPO/YASBI) will be applied as one of the guidelines in managing palm oil plantation in PT. Ketapang Agro Lestari

Management of PT. Ketapang Agro Lestari



PT. KETAPANG AGRO LESTARI
Ir. Azaria Yoga Prasetyanto
Director
July 29, 2011

