

Internal Hotspot Monitoring Weekly Report for 2021

OCT2021_WK03

18 October– 24 October 2021 | Malaysia &
Indonesia



Overview



1. 2018 P&C – Related Criteria
2. Weekly Analysis
 - i. Comparison to 2020: All Hotspots in MY & ID
 - ii. Comparison to 2020: Hotspots within RSPO Member Concession
 - iii. Weekly trend from the last 10 weeks
3. Weekly Hotspot Map
 - i. Hotspot Tabulation Map
 - ii. Hotspot Persistency Map
 - iii. Hotspot Distribution by Peatlands and Landuse Map
4. Hotspots for OCT2021_WK03
 - i. RSPO vs. non-RSPO comparison – MY & ID
 - ii. Hotspots Distribution by States/Region - MY & ID
 - iii. Hotspots in RSPO members
5. ASEAN Weather Outlook



2018 P&C - Related Criteria

There is **no use of fire for pest control** unless in exceptional circumstances

7.1.3

Criteria 7.1

The unit of certification **does not use open fire for waste disposal.**

7.3.3

Criteria 7.3

The unit of certification **establishes fire prevention and control measures** for the areas directly managed by the unit of certification

7.11.2

Criteria 7.11



Weekly Analysis

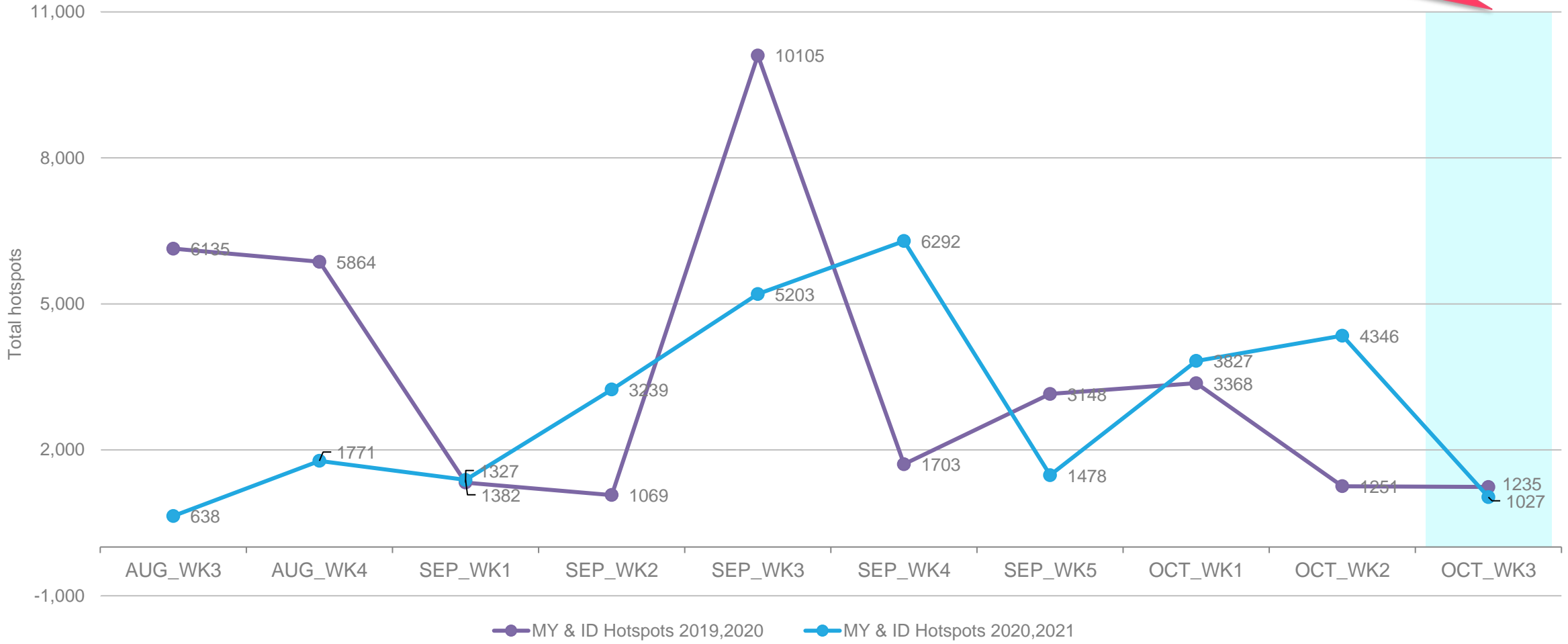
Comparison to 2020 trend
Comparison to previous 10 weeks

18 October – 24 October 2021

Comparison to 2020: All hotspots



Almost similar total hotspot in the region compared to this time last year (October: 3rd week 2021 vs 2020)

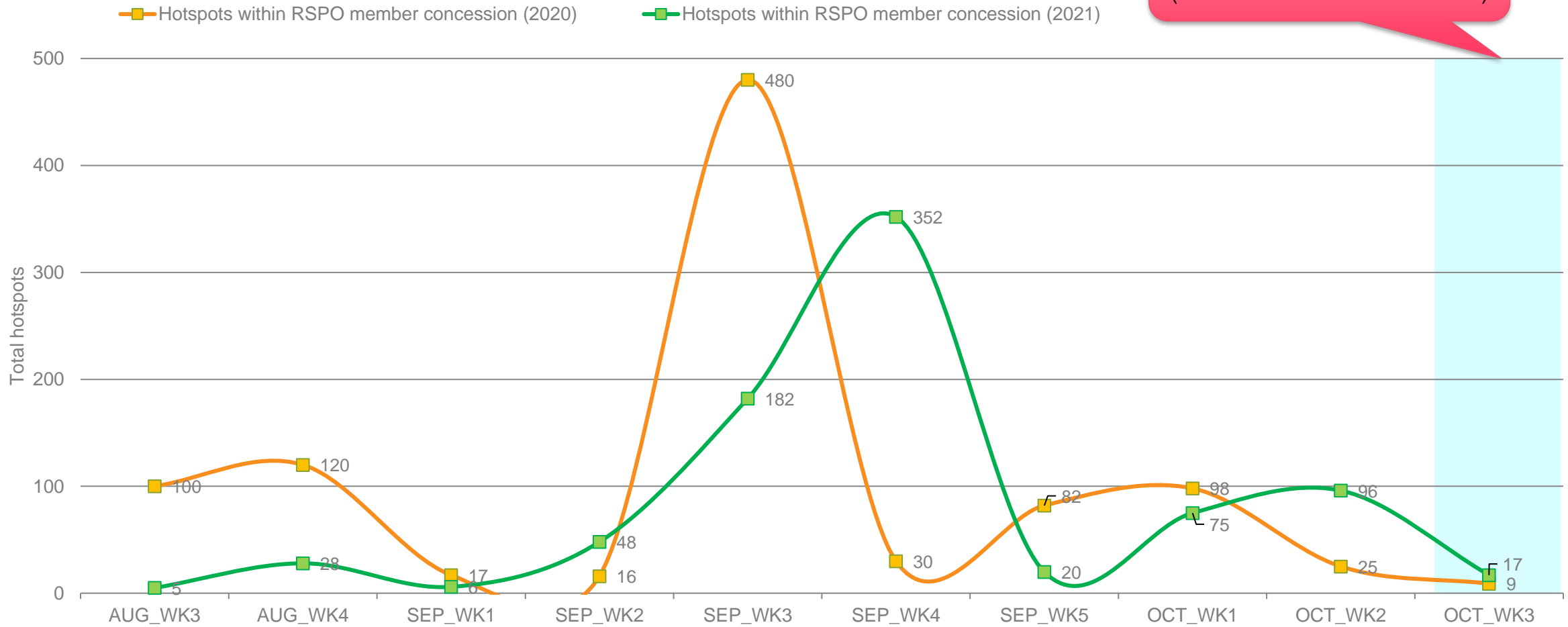


18 October – 24 October 2021

Comparison to 2020: Hotspot within RSPO Member Concession



Higher total hotspot in the region compared to this time last year (October: 3rd week 2021 vs 2020)

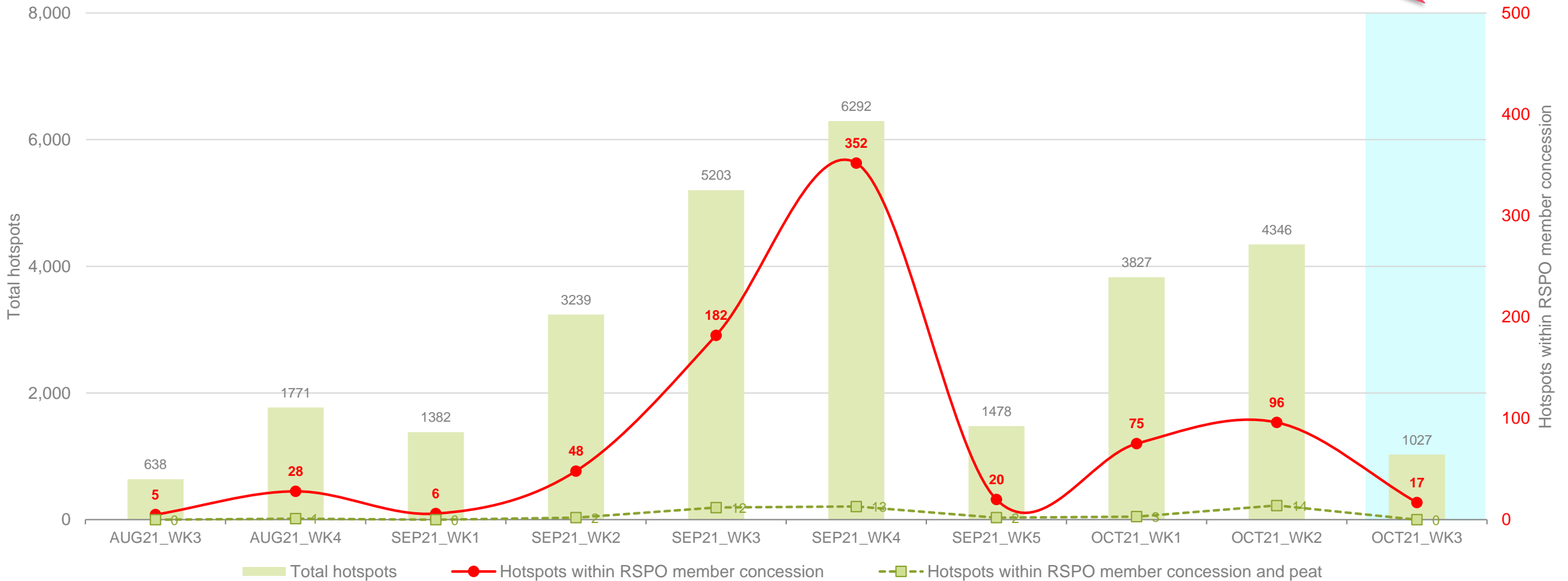


18 October – 24 October 2021

Weekly trend from last 10 weeks



Significantly lower in hotspot count



18 October – 24 October 2021



Weekly Hotspot Map



Malaysia & Indonesia
(Sumatera & Kalimantan) Region

18 October – 24 October 2021

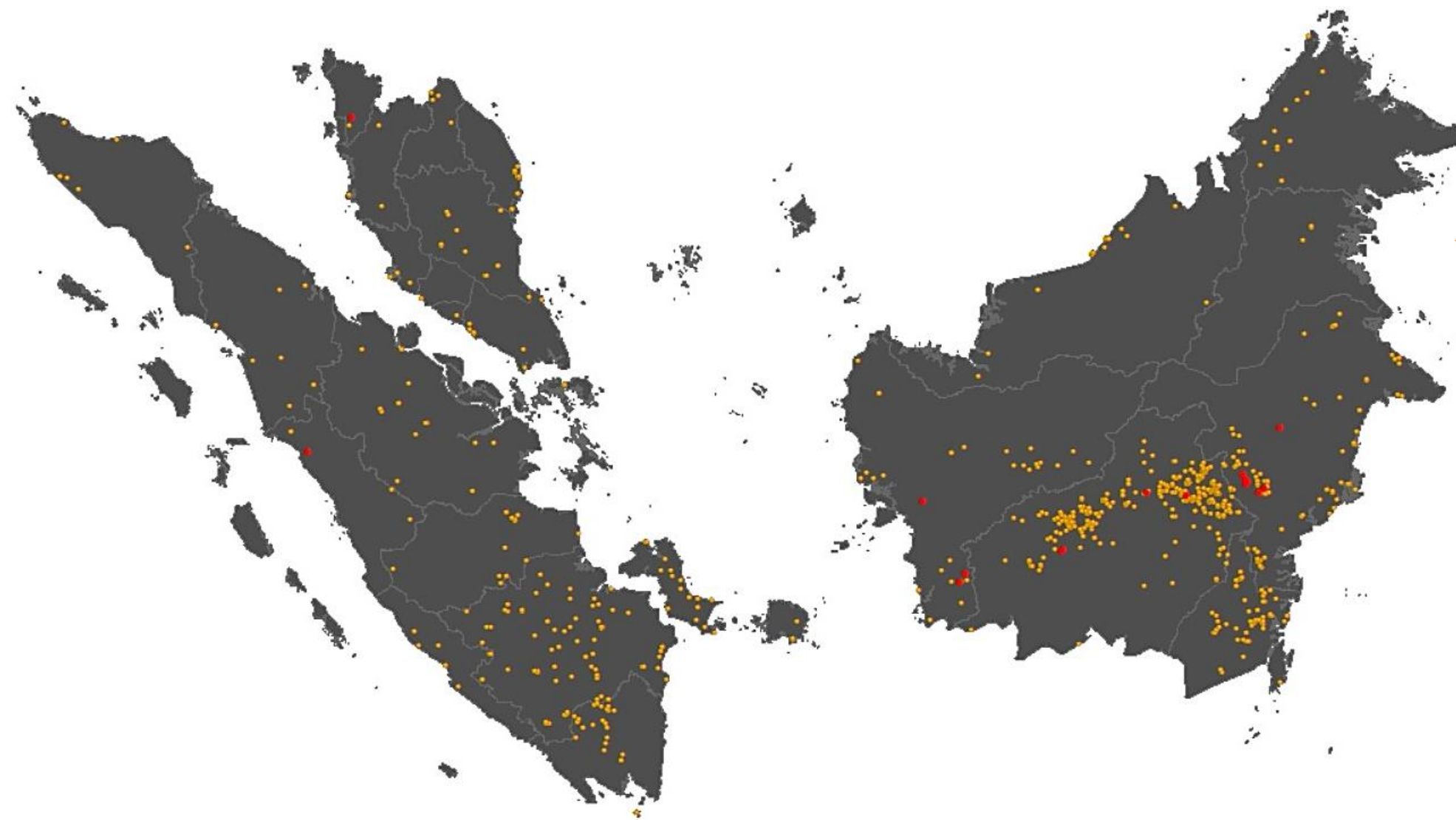


Hotspot Tabulation Map

Legend:

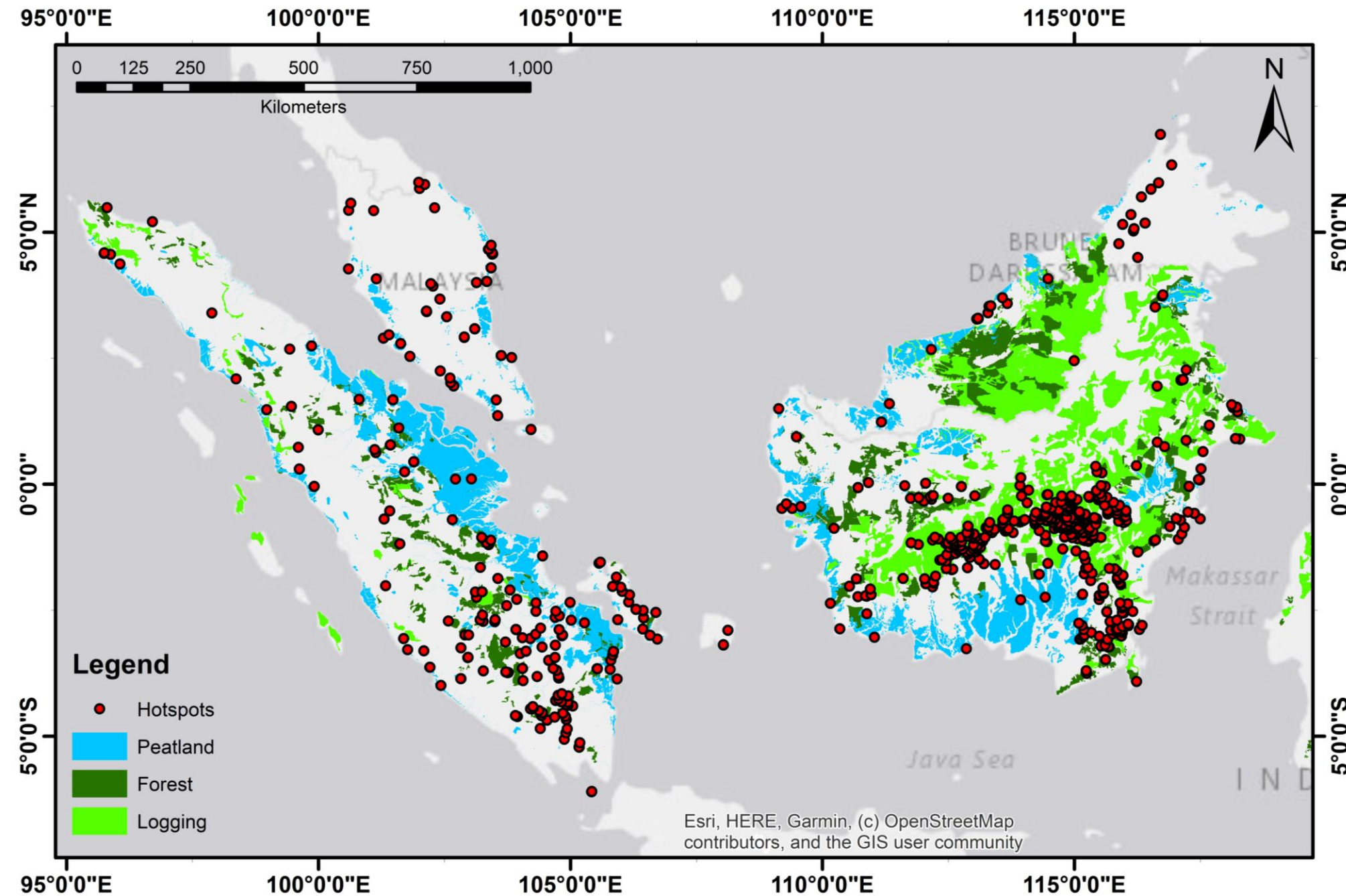
	Hotspot within RSPO member concession
	Hotspot detected by satellite sensor

18 October – 24 October 2021





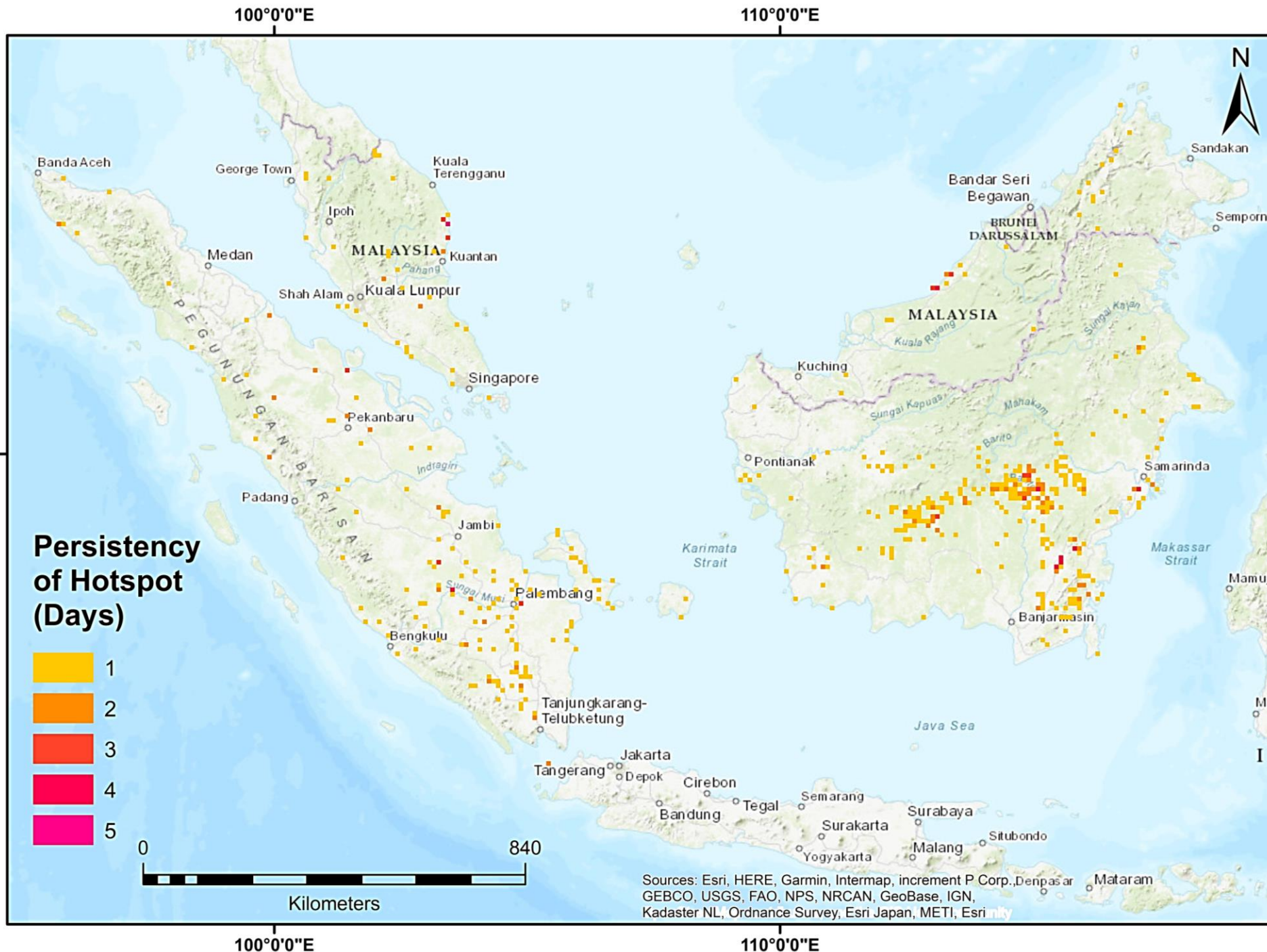
Hotspot Distribution by Peatland & Landuse Map



DATA	SOURCE
Peatland	Kesatuan Hidrologis Gambut
Non RSPO Oil Palm boundary	WRI & Greenpeace (https://data.globalforestwatch.org)
Timber Concession boundary	WRI (https://data.globalforestwatch.org)



Hotspot Persistency Map



Each grid represents the number of days hotspots were detected within the 10km X 10km grid between 18 October – 24 October 2021

18 October – 24 October 2021

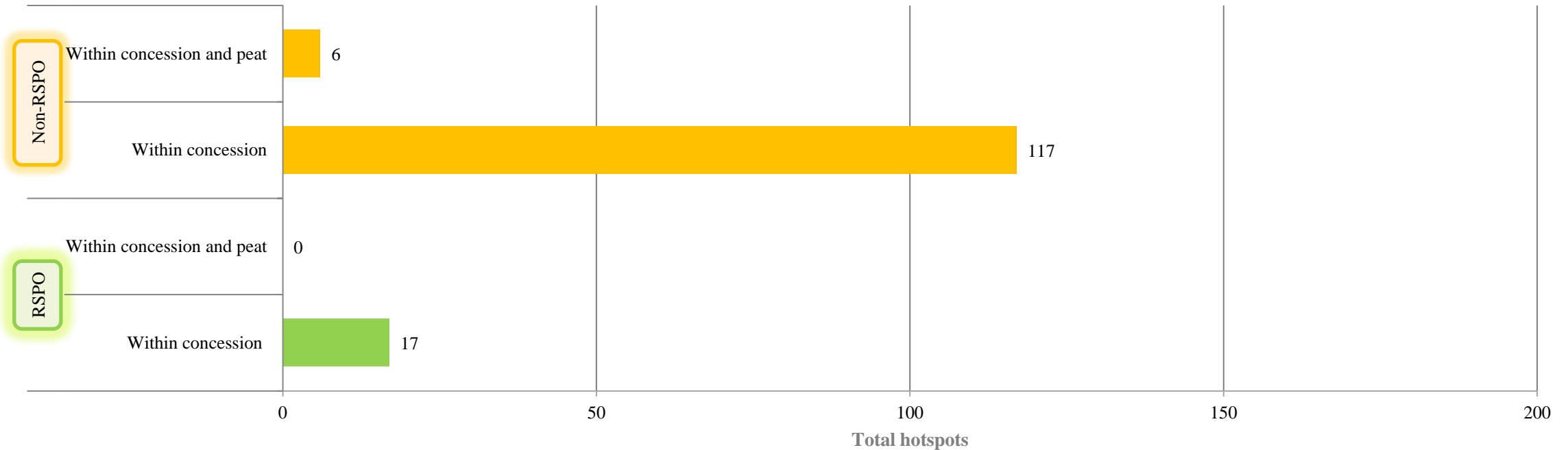


OCT2021_WK03 Hotspot

Malaysia & Indonesia
(Sumatera & Kalimantan) Region

18 October – 24 October 2021

RSPO vs non-RSPO comparison



* Non RSPO Oil Palm Concession location data was derived from data downloaded from the Greenpeace website (<http://www.greenpeace.org/seasia/id/Global/seasia/Indonesia/Code/Forest-Map/en/data.html>).

The website states that these data was "compiled by Greenpeace (2015) based on agriculture plantations maps, provided by the Planning Department of the Ministry of Forestry, Indonesia, downloaded on July 29 2010 (appgis.dephut.go.id/appgis/kml.aspx), supplemented and updated by Greenpeace in several provinces with data gathered from provincial agencies (BPN/BAPPEDA) and corporate submissions, such as to the Roundtable on Sustainable Oil Palm (RSPO)."

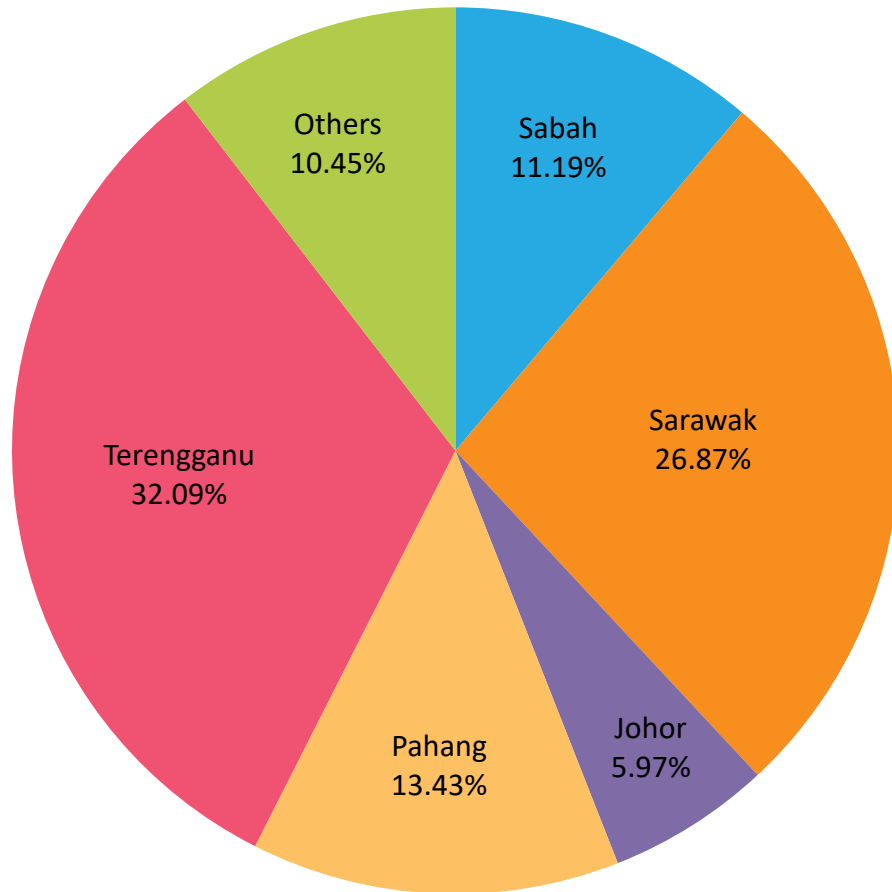
As such the data probably overstates the extent of oil palm plantations in some cases, as there are many licenses granted and the oil palm plantation has not been developed. In other cases, it may understate the extent of plantations as it does not take into account smallholders. Nevertheless, this appears to be the best data available of ALL oil palm in Indonesia.

The RSPO concession boundary data was overlaid with this data in the GIS and RSPO concessions were "clipped" out of this data, leaving only "non-RSPO" concessions.

Non-RSPO*: ~19,000,000 ha

RSPO: ~ 2,300,000 ha

Distribution of Hotspots by State in Malaysia

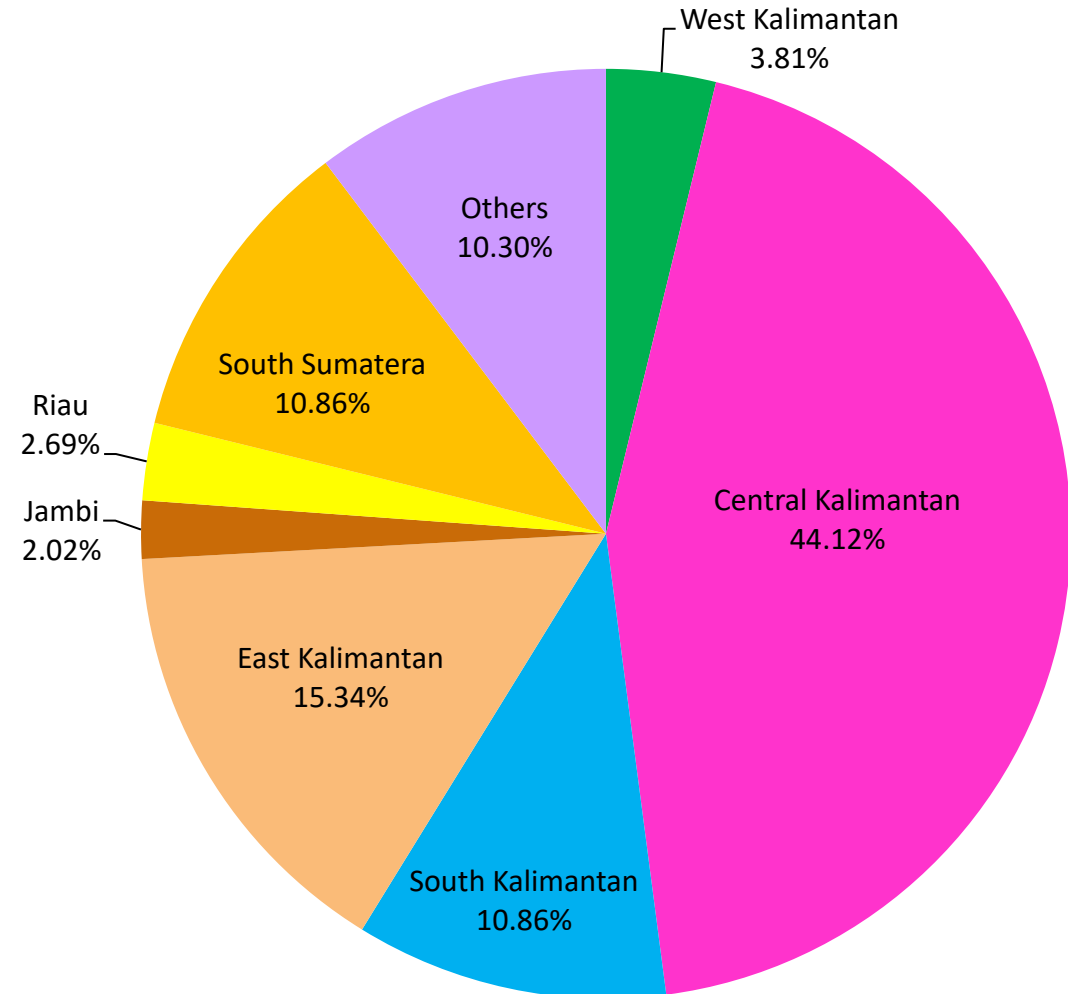


State	Total
Sabah	15
Sarawak	36
Johor	8
Pahang	18
Terengganu	43
Others	14
Total	134



Distribution of Hotspots by Region in Indonesia

Region	Total
West Kalimantan	34
Central Kalimantan	394
South Kalimantan	97
East Kalimantan	137
Jambi	18
Riau	24
South Sumatera	97
Others	92
Total	893



Hotspots in RSPO members



Group Name	Region/State	Country	No. of Hotspots
Bumitama Agri Limited	Central Kalimantan	Indonesia	1
First Resources Limited	West Kalimantan & East Kalimantan	Indonesia	7
Genting Plantations Nusantara	Central Kalimantan	Indonesia	1
Golden Agri-Resources Ltd	West Kalimantan & Central Kalimantan	Indonesia	2
Musim Mas Holdings	Central Kalimantan	Indonesia	1
PT Perkebunan Nusantara VI	West Sumatra	Indonesia	1
REA Holdings Plc.	East Kalimantan	Indonesia	1
Sime Darby Plantation Berhad	Kedah	Malaysia	1
TSH Resources Berhad	East Kalimantan	Indonesia	2
		Total Hotspots	17



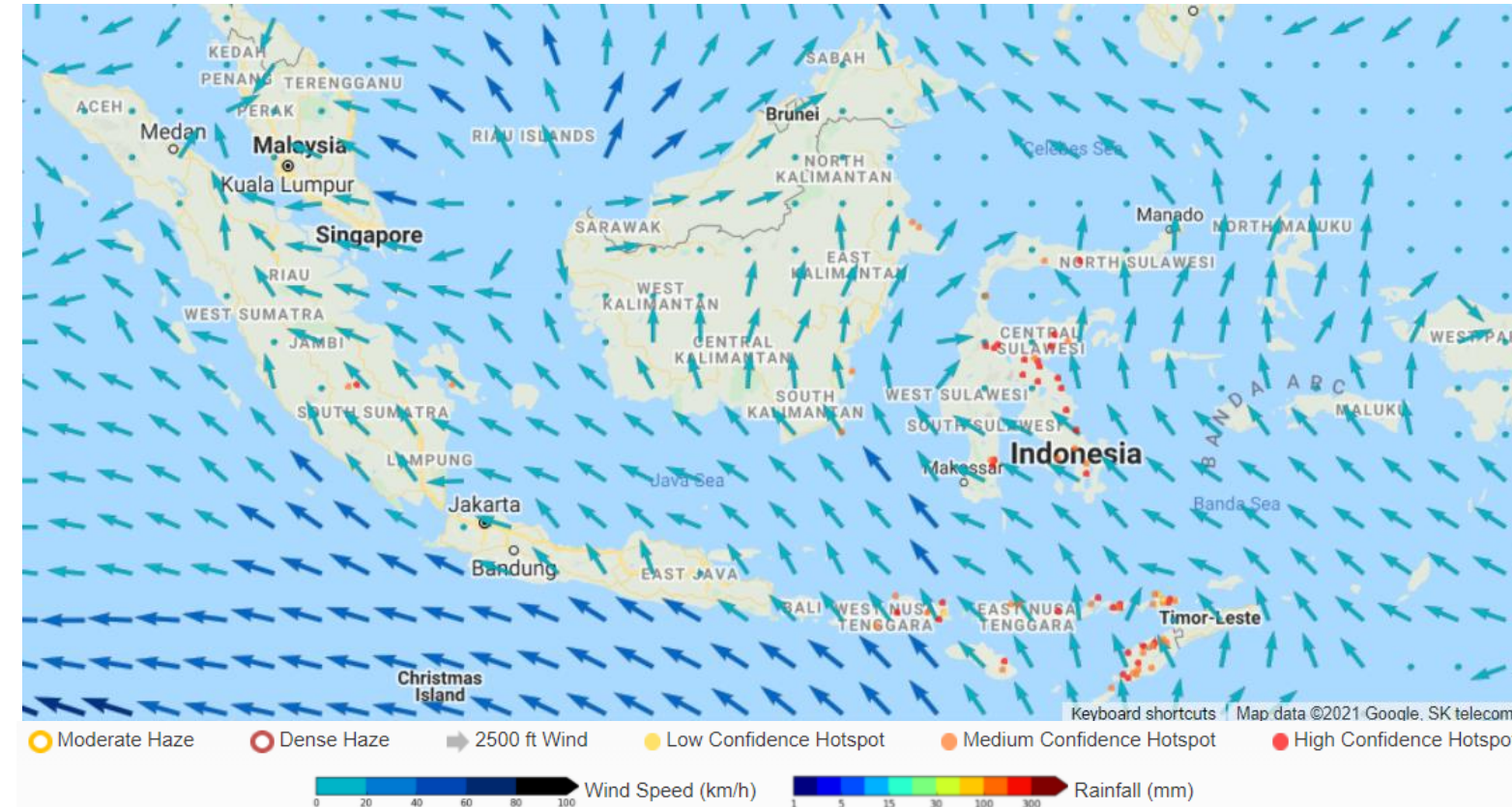
ASEAN Weather Outlook

Source: The ASEAN Specialised Meteorological Centre

18 October – 24 October 2021



Regional Weather & Haze Outlook



Alert Level

- LEVEL 0** Stay vigilant.
- LEVEL 1** Dry season for the southern ASEAN region.
- LEVEL 2** Exceeding 150 hotspots in 2 consecutive days in Northern ASEAN with dense smoke plumes; dry weather persisting; and prevailing winds blowing from the Mekong sub-region. Increasing risk of transboundary haze in the region.
- LEVEL 3** Exceeding 250 hotspots in 2 consecutive days with dense smoke plumes; dry weather persisting; and prevailing winds blowing towards ASEAN countries.

In the coming days, the winds are forecast to be light and variable, signalling the inter-monsoon conditions. La Niña condition chances may develop over the next few months & above-normal rainfall is expected for most parts of the southern ASEAN region for the rest of the year which would help subdue the hotspot activities. Isolated hotspots and localised smoke plumes may however still occur during brief periods of dry weather.

Third week of October remarks the end of dry season for the Southern ASEAN Region, shows by the increasing shower activities over this region. While over most of the Maritime Continent, wetter conditions are predicted in the next fortnight (18 – 31 October). In the third week of October, wetter conditions for the equatorial region and over Mainland Southeast Asia were apart from over western Mainland Southeast Asia.

Alert by RSPO



In the next two weeks the RSPO Secretariat would like to recommend the following:

To Growers:

- Provide a good management to encounter the raining season:
 - the highly risk of erosion may lead to landslide in the estate area
 - tendency of the road potholes which may require a cost for maintenance and repairing
- Heavy intensity of rainfall could result flood, which will decrease Fresh Fruit Bunch (FFB) yields.



18 October – 24 October 2021





Find out more at
www.rspo.org