

**Roundtable on Sustainable Palm Oil
New Planting Procedures
Summary Report of Planning and Management**

PT Agrindo Indah Persada

**Merangin District
Jambi, Indonesia**

TABLE OF CONTENTS

TABLE OF CONTENTS2

1. Executive Summary.....3

- 1.1. Summary of Assessment Findings.....3
- 1.2. Assessment result.....4

2. Reference Document.....5

- 2.1 Lists of reports 5
- 2.2. List of Legal documents, regulatory permits and property deeds related to the project area:5
- 2.3 Location maps – both at landscape level and property level:6
- 2.4. Area of new plantings and time-plan for new plantings8

3. SEIA and HCV Management and Planning Personnel.....10

- 3.1 Organisational Information / Contact Person.....10
- 3.2 Personnel Involved in Planning and Implementation10
- 3.3 Stakeholder to be Involved.....10

4a. Summary of SEIA Management and Monitoring plan 10

- Company’s Social Impact Management for Social Sustainability of local communities11
 - Impact to Human Capital.....11
 - Impact to Natural Capital12
 - Impact to Social Capital12
- Social Impact Management to Social Sustainability of Internal Estate Communities13
 - Impact to Human Capital Component13
 - Impact to Social Capital Component 13
 - Impact to Natural Capital Component.....14

4b. Summary of HCV Management and Monitoring plan..... 14

- HCV Management Plan14
- Management and Mitigation plan for HCV 115
- Management and Mitigation plan for HCV 416
- Management and Mitigation plan for HCV 617
- Plan for HCV Monitoring and Regular Review of Data18

5. Internal responsibility..... 19

1. Executive Summary

1.1. Summary of Assessment Findings.

PT Agrindo Indah Persada (PT AIP), a subsidiary of Wilmar International plantation (WIP) group has shown commitment to attain sustainability through the implementation of the RSPO P & C right from the beginning. The company obtained a location permit from Merangin - Regent through letter No. 343/PEREKO & SDA/year 2010. The location permit was granted to PT Agrindo Indah Persada for the cultivation of Oil Palm in Tabir Barat sub district, Merangin District with a total area of 1200 ha. The Location permit issued on November 12, 2010, is valid until November 12, 2013.

Wilmar International Limited, being a member of RSPO member has commence the adoption of the sustainable palm oil practice in PT Agrindo Indah Persada (PT AIP) in Merangin District Jambi, which has a Geographic Positioning System coordinates of S $1^{\circ} 54'$ to $1^{\circ} 56'$ and E $102^{\circ} .4'$ to $102^{\circ} 7'$ by going through the RSPO New Planting Procedure which was approved in September 2009 by RSPO Executive Board. Administratively the location of PT Agrindo Indah Persada spreads over 3 villages of Pulau Tebakar Village, Tajung village, and Muara Langeh village, Tabir Barat Sub District; in Merangin, Jambi Province. PT Agrindo Indah Persada is ready to implement the recommended environmental and social management plan as specified in the High Conservation Value (HCV) and Social and Environmental Impact Assessment (SIA) report.. The Environmental Social Impact assessment was done separately. The Environmental Impact assessment in the form of UKL/UPL was done by UNJA (University Jambi) a government approved EIA consultant and the Social Impact assessment was done by Aksenta, an RSPO accredited assessors. The High Conservation Value Assessment was also done by Aksenta.

The required legal documents such as, Location Permits (Izin Lokasi), UKL/UPL (Environmental Management Workplan and Environmental Monitoring Exercise), SIA and HCV reports are available. The HCV and SIA analysis were conducted in January 2011 and the UKL/UPL (Environmental Management workplan and Environmental Monitoring Exercise) was approved by the district Environmental department of Merangin District on May, 6 2011 No. 660/04./Amdal-KLH/2011.

There is no Virgin Forest (Primary Forest) in this area. The UKL/UPL report and HCVF assessments conducted in various concessions state explicitly that the majority of the concession areas were degraded land or shrub areas as a result of years of shifting cultivation by local community. This area therefore cannot be classified as a forest but of a mature fallow where the vegetation shows some sort of recovery to a mature state. A small part of secondary forest was found within the location permit boundary of PT Agrindo Indah Persada in Aksenta's HCV assessment. The soil type based on the Soil/Agronomic report conducted by Wilmar R and D department and the HCV report shows that the dominant soil types are Ultisol and Inceptisol. Three types of HCVs identified within the location permit boundary of PT Agrindo Indah Persada, with the total indicative HCV area of 370.60 ha are HCV 1, HCV 2 and HCV 6.. Elements for HCV 1 are the existence of customary forest Bukit Murau, that double up as a corridor for IUCN Critical species like Sumatera Tiger (*Panthera tigris*), IUCN

RSPO New Planting Procedure Assessment Report

PT Agrindo Indah Persada – Jambi

Page 4 of 19

Endangered species such Agile gibbon (*Hylobates agilis*), Sumatran clouded Leopard (*Neofelis diardi*), and Sunda Pangolin (*Manis javanica*).

IUCN Vulnerable species such as Malayan Sun Bear (*Helarcotos malayanus*) and Horn bill (*Buceros rhinoceros*) are also present. HCV 1 also cover for areas that Contain or Provide Biodiversity Support Function to Protected or Conservation Areas i.e. buffer zone for Natural Productive Forest.

The important elements for HCV 4 are related to the protection of steep areas within the location permit that can cause serious erosion problem, the protection of buffers around freshwater spring, water cathment such Langeh Dareh and riparian reserves for Simpang Pelepat River, Batang Seling River, Cuban Dareh, Cuban Tenang, and Bukit Murau. These riparian reserves has a good forest cover and can become an effective fire barrier. Element for HCV 6 is the 45.66 ha of Bukit Murau customary forest which is considered sacred by the Suku Anak Dalam (Indigenous people in Jambi).

The SIA assement by Aksenta highlighted that, in general, the existence of PT Agrindo Indah Persada will have a significant social impact to the basic requirement to the social sustainability of local community. The impact of the company presence with its plantation development plan towards social sustainability is discussed in the Summary of Assessment Findings for SIA Assessment. Those findings have defined how the company's business management influences the key issues in every component of the social sustainability of local community.

1.2. Assessment result

The social and environmental impact assessments were detail, comprehensive and professionally carried out. The management plan have included the findings of the UKL/UPL, HCV and SIA assessments by consultants accredited and approved by the RSPO (and for UKL/UPL, a consultant approved by the government). PT Agrindo Indah Persada has adhered to the RSPO New Planting Procedures and has documented the assessments and plans according to the RSPO templates issued in May, 2010. TUV Reinland auditors conducted desktop study and verified all the related documents since 20 & 21 May 2011. TUV Rheinland Auditor confirmed that the assessment and plan are comprehensive, professional and compliant to the RSPO principles, criteria and indicators.

RSPO New Planting Procedure Assessment Report
PT Agrindo Indah Persada – Jambi

Page 5 of 19

2.0 Reference Documents :

2.1 Lists of Reports

- i. Laporan Kajian HCV (High Conservation Value), PT Agrindo Indah Persada , Jambi. February 2011.
By Aksenta.
- ii. Laporan Kajian Dampak Sosial, (Social Impact Assessment SIA) di PT Agrindo Indah Persada,
by Aksenta
- iii. Laporan UKL/UPL (Upaya Kelola Lingkungan, Upaya Pemantauan Lingkungan) untuk PT
Agroindah Persada oleh UNJA (Universitas Jambi)
- iv. Permit register.
- v. Land release and compensation record
- vi. Minutes of Meetings with Communities on Public awareness of the Project (FPIC- Free Prior
and Informed Consent)
- vii. Soil and Feasibility Report.

2.2. List of Legal documents, regulatory permits and property deeds related to the project area:

The permits that have been obtained by the company since the first company operation in 1996 such as:

- i. Location permit no. 343/PEREKO & SDA/2010 from Regent-Merangin dated November 12, 2010 with total area (1200 ha)
- ii. Approved UKL/UPL No. 660/04./Amdal-KLH/2011 tanggal 6 Mei 2011 dari Kantor Lingkungan Hidup Kabupaten Merangin.
- iii. History of Technical Consideration for Land Use Spatial In Order to propose of location permit PT Agrindo Indah persada No. 68/PPP/PTPT/Tanggal 1-11-2010 from dari National Land Agency Merangin District
- iv. Recommendation of Boundary between location Permit PT AIP and Productive Forest states Area No. 522/147.a/PH/DISBUNHUT/2011 from Plantation and Forestry Agency Merangin District issued on March 29, 2011.
- v. Minutes of Boundary verification between location Permit area PT AIP and Forest Area Sei Aur in Tabir Barat Sub District, Merangin District with total boundary length 8500m

RSPO New Planting Procedure Assessment Report

PT Agrindo Indah Persada – Jambi

2.3 Location maps – both at landscape level and property level:

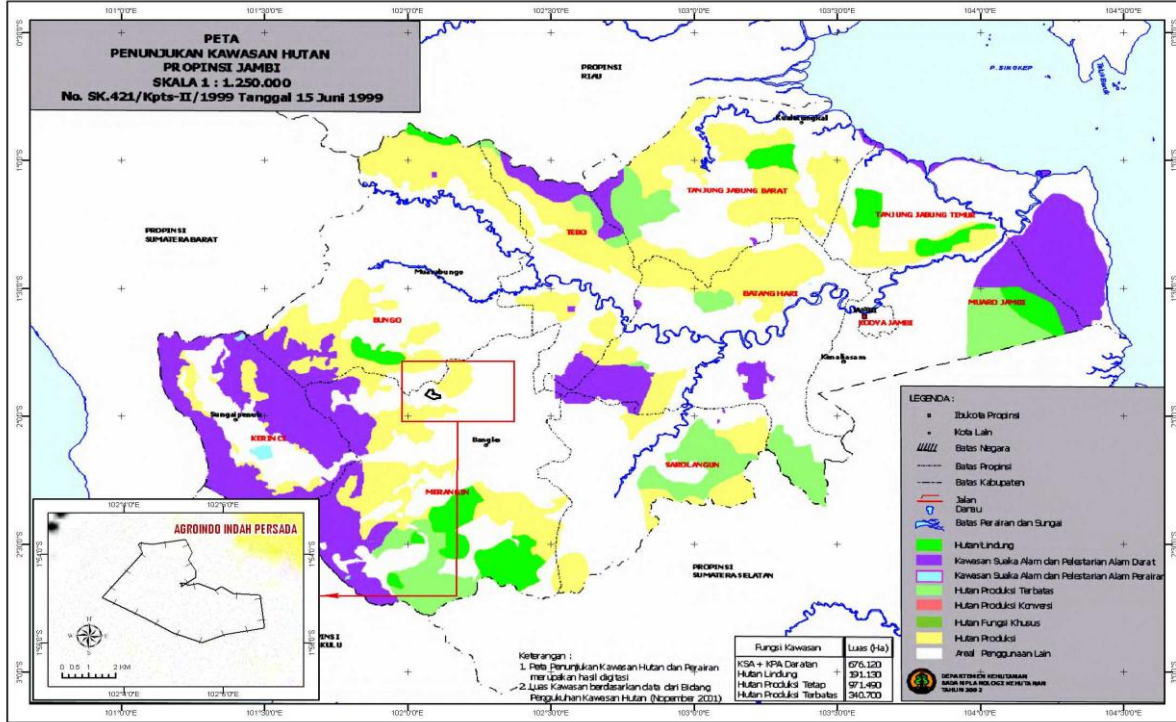
1. Company's location in Jambi Province Indonesia



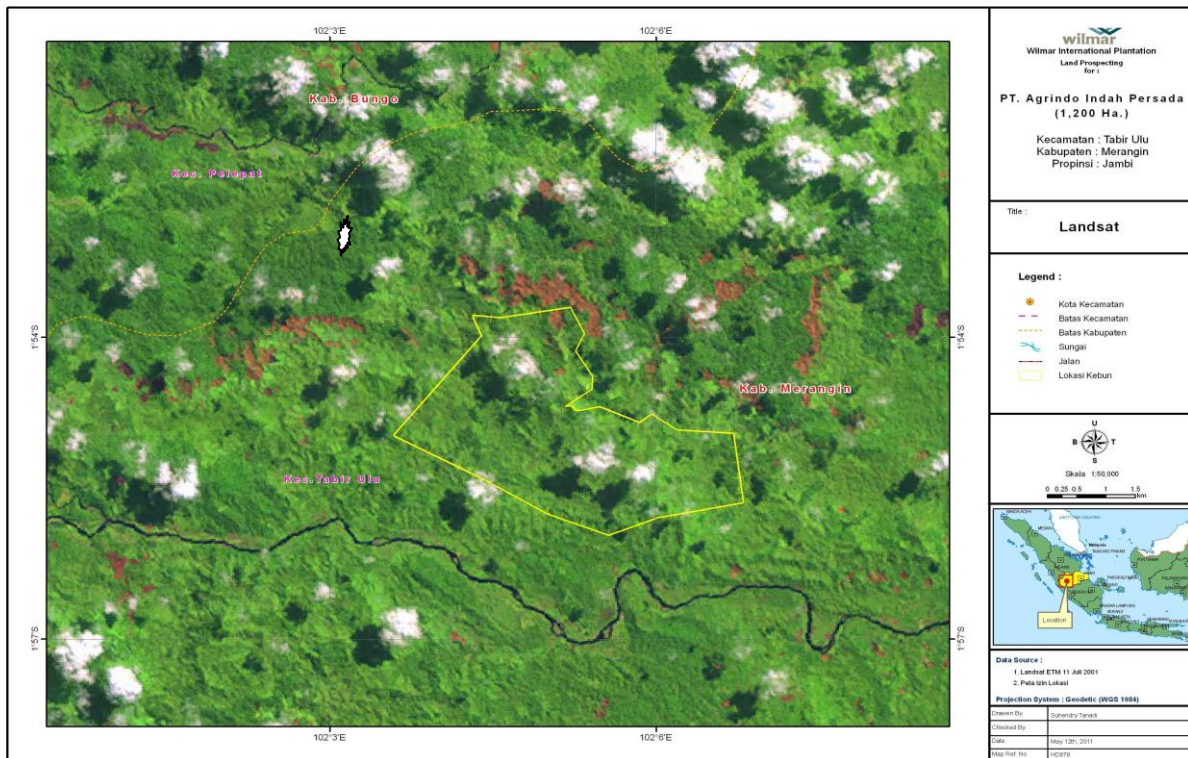
RSPO New Planting Procedure Assessment Report

PT Agrindo Indah Persada – Jambi

2. Landscape map PT Agrindo Indah Persada



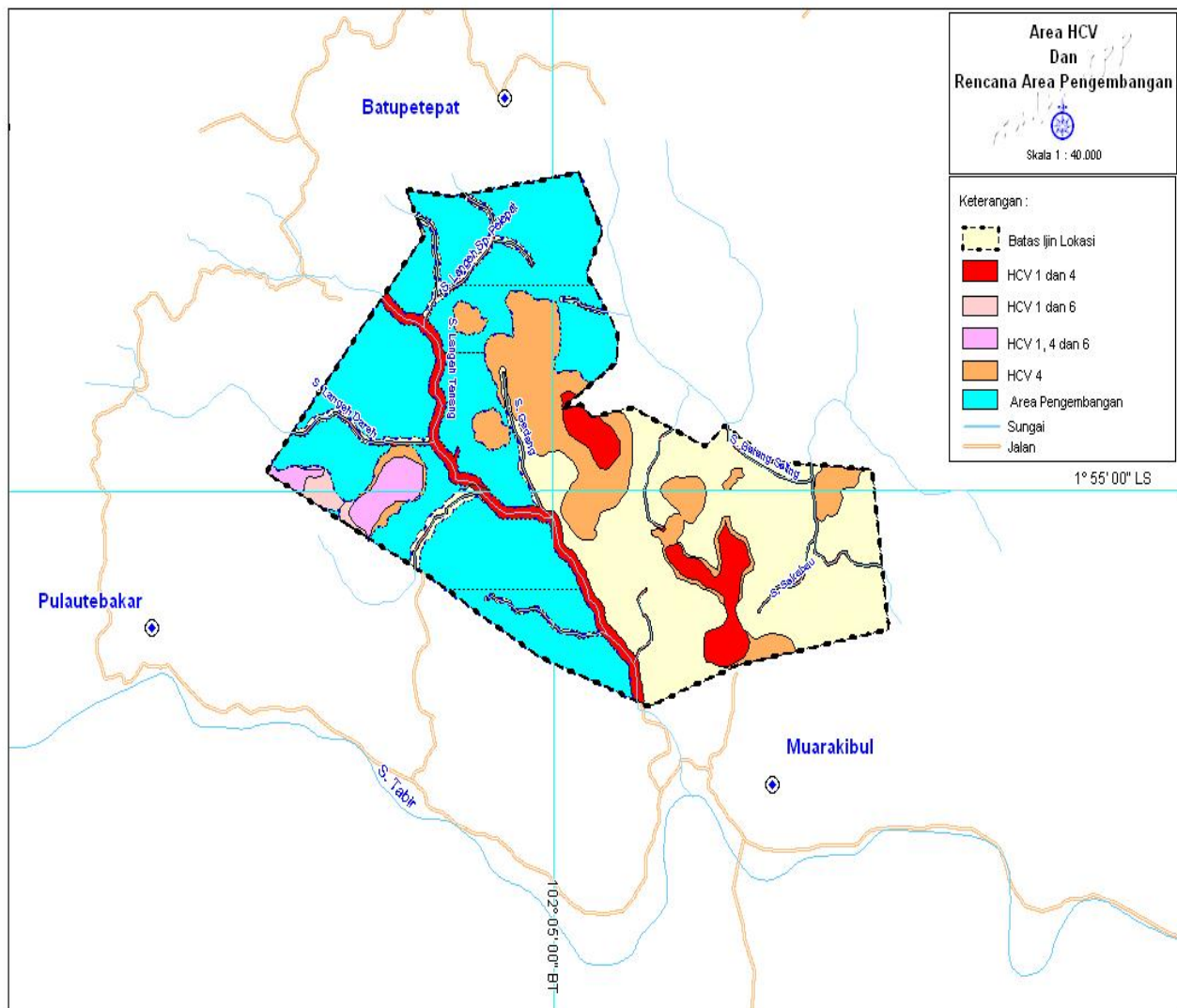
3. Satellite Imaginary PT Agrindo Indah Persada



2.4. Area of new plantings and time-plan for new plantings

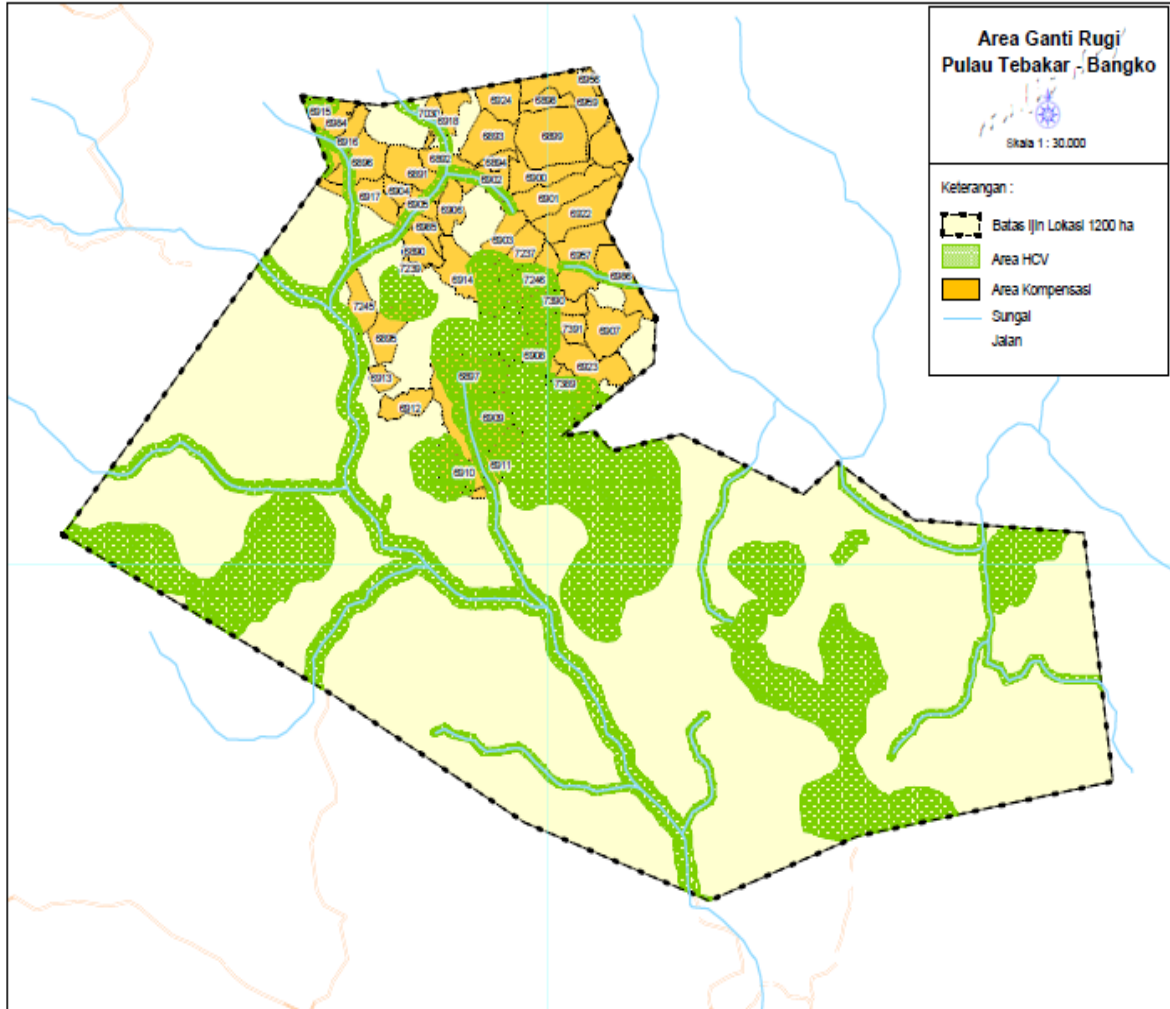
The proposed new planting area by PT Agrindo Indah Persada is within the location permit (Izin Lokasi) which have been agreed by the owners of the land (Report on Land Compensation of PT Agrindo Indah Persada) and the area does not contain forests nor any high conservation values. In accordance with the operational management data of PT Agrindo Indah Persada, subject to the New Planting Procedure approval the operation will commence in August 2011 with total estimated planting area of about 500 ha, after receive notification from CB. The progress of new plantation development is in compliance with RSPO New Planting Procedure.

4. Land Clearing 2011 Planning Map



RSPO New Planting Procedure Assessment Report
PT Agrindo Indah Persada – Jambi

5. Land Compensated Area as of April 2011



RSPO New Planting Procedure Assessment Report

PT Agrindo Indah Persada – Jambi

Page 10 of 19

3.0 SEIA and HCV Management and Planning Personnel:

3.1 Organisational Information / Contact Person

Contacts details of the company are as follows:

Company Name:	PT Agrindo Indah Persada
Address:	Gedung B & G Lt. 10 Jl. Putri Hijau No. 10 Kesawan Medan Barat Jl. Lintas Sumatera KM. 13 Desa Tambang Baru Kecamatan Tabir Lintas Kabupaten Merangin Provinsi Jambi. District : Merangin, Sub District : Tabir Barat, Villages : Pulau Terbakar, Tanjung Beringin, Tanjung Putus, Muara Langeh
Contact Person:	Mr. MG. Sharma/Muhammad Ilham
Telephone:	Phone: 061 4145777; fax: 061-4154891
Email:	muhammad.ilham@wilmar.co.id
Deed In corporation	C-13909 HT.01.01.TH.2001
Capital Status	PMA (Penanaman Modal Asing) Foreign Investment Company
Status Business Land	Location Permit No. 343/PEREKO & SDA/2010 from Merangin Regent
Total Area	1200 ha

3.2 Personnel Involved in Planning and Implementation

Those involved in the planning and implementation will be Asst General Manager, Senior Estate Manager, Bina Mitra (Social Department), Environmental Health and Safety Department and Community Development officer.

3.3 Stakeholder to be Involved.

Local communities that are affected by the development of PT Agrindo Indah Persada as identified in the Social Impact Assessment report. Relevant government departments will also be involved.

4a. Summary of SEIA Management and Monitoring plan

The SIA development and preparation of management & monitoring plans for PT Agro Indah Persada was based on the findings conducted in February 2011 by an RSPO Accredited Assessors from Aksenta. The UKL/UPL (environmental) Assessment for PT Agrindo Indah Persada was conducted by UNJA (University Jambi) a government accredited EIA consultant. The UKL/UPL which was approved on May, 2011 (by the decision letter [decree] of the regent of Merangin. and, in

principle, referred to the related Laws in Indonesia. The steps taken in the HCV and SIA development and preparation of management & monitoring plans were:

Company's Social Impact Management for Social Sustainability of local communities

1. Impact to Human Capital

1.1. Employment and the creation of new jobs

- i. Identify and record the current types of livelihood
- ii. Provide the information about the career prospect and the sort of expected qualification to fulfill these available vacancy.
- iii. Make vacancy announcements that can be accessed by all levels of society.
- iv. Give priority to local community in fulfilling the manpower needs with due regard to quality, standards and job availability for the respective job sectors.

1.2. Improvement on the level of community education

- i. . Identify and record the number of available educational infrastructure.
- ii. . Identify and record the highest level of education received by the community.
- iii. . Identify the number of people who received education.
- iv. . Record number of people who does not received formal education.
- v. Prepare a workable plan to support the current education program (eg, procurement of books, stationery, sports equipment, uniforms, repair buildings, supply of teachers).

1.3. Increase local communities awareness of good agricultural practice.

The concept is to improve on farmers livelihood to become suppliers to Oil palm and rubber processing facilities.

- i. Provide training on "*Good Agriculture Practices*" to the community who have oil palm or plots who can become potential FFB suppliers to the mill. Similar training can also be extended to community with rubber plots
- ii. Working with village co-operatives to facilitate the farmers to obtain agricultural inputs (seeds, fertilizers, pesticides, etc.).

1.4 Development of alternative income generating activities to safeguard their economic standing after post-development of the project.

- i. Identify the number of affected communities that can not be absorbed by the plantation company.

- ii. Identify potential areas that could be developed into other alternative economic development program.
- iii. Together with the community, design a community development program.
- iv. Monitor the progress and implementation of community development programs to improve community economic level.

2. Impact to Natural Capital

2.1. Participation of company in maintaining the water quality of Sungai Tabir

- i. . Manage the domestic and schedule waste in a proper manner.
- ii. Monitor the quality of waste water discharge into water bodies.
- iii. Hold dialogues with community on waste handling technique.
- iv. Monitor the changes of natural hue of Sungai Tabir (if any).
- vi. Work together with local community to co-manage the the riparian areas of Sungai Tabir (in coordination with the village officials)

2.2. Company does land acquisition through legal means should also received community approval

- i. Conduct an inventory of community land ownership (size of land, proof of ownership).
- ii. Coordination with village officials regarding the agrarian inventory in the village (boundary between regions).
- iii. Survey with the related parties in on definitive delineation of land ownership for the purpose of acquisition.
- iv. Create a land acquisition agreement with their respective legal owner of the land without any pressure/coercion.
- vii. . The involvement of any related parties (e.g. Government) to solve problematic land acquisitions

3. Impact to Social Capital Component

3.1 Detail and comprehensive information about plantation development plans to the local communities.

- i. Conducting the process of FPIC with local communities

3.2. Increased of social interaction with local firms

- i. Create a communication forum
- ii. Conduct communication with local communities to :
- iii. Mutual understanding and respect the rights of indigenous community customs and rules of the

company.

- iv. Settlement of complaints/ social conflicts (if any)
- v. Create a community development program through a communication forum.

Social Impact Management to social sustainability of internal estate communities

1. Impact to Human Capital Components

1.1 Creation of safe and healthy working site

- i. Identification of the hazard-risk of each type of job
- ii. Determination of hierarchical control measures (from engineering, administration, until the procurement of APD)
- iii. Investigation of work accidents
- iv. Assessment of environmental factors that influence the Safety aspect. (e.g. fire during drought)
- v. Procurement of emergency response equipment
- vi. Training and awareness campaign on health and safety matters.
- vii. Simulation of the emergency response plan
- viii. Supervision of health and safety implementation in workplace.
- ix. Evaluation of the effectiveness of health and safety management system
- x. Cooperate with related parties to publicize about health care to workers and their families
- xi. Build clinic and provision of doctor/ nurse
- xii. Create a sanitation improvement program in housing

1.2 Strengthening the staff cooperation functions for the welfare of the members

- i. Fostering the management of cooperatives.
- ii. Help to create access to new businesses opportunity.
- iii. Providing soft loans to cooperatives.
- iv. Monitoring the development of cooperatives and providing assistance as needed

2. Impact to Social Capital Component

2.1 Provision of tools for workers on freedom to associate.

- i. Facilitating all workers to unite and form unions
- ii. Conducting regular meetings with unions
- iii. Improve on the building capacity of union staff f through training

- iv. In the event the Union is not formed, have a bi-partit body to solve problem related to industrial relations

2.2. Increase social interaction among workers, and/or between companies and workers

- i. Facilitate the establishment of social clubs or committee in each housing location
- ii. Putting up an information board.
- iii. Putting up suggestion box
- iv. Organizing events to build togetherness.

3. Impact to Natural Capital Components

3.1. Guarantee the provision of feasible social and public facilities for workers

- i. Addition of adequate supplies of water and sanitation equipment for the addition of new housing units
- ii. Construction of clinic and the provision of doctor/ nurse
- iii. Training to workers about safeguarding the housing and other supporting facilities, clean environment (housekeeping, zero burning) and conserving of resources (water, electricity, oil, gas, etc.).

4b. Summary of Management and Mitigation Plans (HCV)

1. HCV management plan

The HCV development and preparation of management and monitoring plans was based on the result of the HCV assessment which was completed in January 2011 by the RSPO Accredited Assessors from Aksenta. This assessment involved the collection of data and information related to the existence of the HCV area in the proposed area of PT Agrindo Indah Persada in the Merangin District, Jambi. The key elements of HCV were identified and based on the current situation the potential threats were identified and the recommendation for the management to address these threats were made.

The HCV management and monitoring plans was developed to provide guidelines for the company in protecting and enhancing the HCV values/areas identified in its proposed development area. The purpose was to identify available resources and be focused so as to be integrated in an effective manner in HCV management. The purposes of this management and monitoring document were:

- i. To ensure that the identified and determined HCV areas are managed so that their HCV functions are protected.
- ii. To effectively administer the management and monitoring plan to ensure that the process is coordinated systematically according to the legal procedures.

The process of the HCV preparation of management and monitoring plans for PT Agrindo Indah

RSPO New Planting Procedure Assessment Report

PT Agrindo Indah Persada – Jambi

Page 15 of 19

Persada Merangin District was based on the structure of strategy mapping which focused on three fields under the management and responsibility of the plantation management;

- a) Stakeholders,
- b) Operation, and
- c) People & Resources.

2. Management and Mitigation plan for HCV 1

- i. Reforestation (through natural/or artificial means) of entire habitat in the area of HCV of 370.60 ha.
- ii. The Senior Management need to issue out strict instruction for the protection of identified HCV areas.
- iii. Conduct awareness campaign to all plantation and surrounding community, about the existence of the entire HCV.
- iv. Identify and map out the vulnerable areas of forest encroachment surrounding the area of HCV.
- v. Identify and map out areas that are potentially vulnerable to forest fires surrounding the area of HCV.
- vi. Monitor and patrol the HCV areas which are prone to forest fires and where risk of encroachment is high. Analyze the data every month.
- vii. The presence of key species in the area of HGU is maintained:
 - Bukit Murau, 45.66 ha
 - Sungai Langeh Dareh 8.61 ha
 - Sungai Langeh Tenang 21.39 ha
 - Sungai Langeh Simpang Pelepat 15.47 ha
 - Water Catchment Area of Sungai Langeh Simpang Pelepat 1.77 ha
 - Hill with steep slope near Sungai Langeh Simpang Pelepat, Sungai Gedang, near basin of Sungai Batang Seling, the downstream of Sungai Sekabau/Besah 28.16 ha
- viii. Conduct delineation of the entire area of HCV as referred
- ix. Create a definitive map of HCV (boundary point of HCV has coordinate position)
- x. Put up riparian signboard of buffer zone surrounding the area of the identified HCV (10 meters from the outer boundary area of HCV)
- xi. Put up signboard identifying the types of HCV presence, together with photos of protected species and with clear warning of consequences of illegal hunting.

RSPO New Planting Procedure Assessment Report

PT Agrindo Indah Persada – Jambi

Page 16 of 19

- xii. Publication and awareness campaign about the presence of HCV areas to internal employees, workers and surrounding communities.
- xiii. Conduct mapping and record on the spread of key wildlife species on site.
- xiv. Conduct rapid survey of the frequency/ abundance of wildlife and the presence of new borne (sign of viability) in the area of HCV and HGU
- xv. Identify areas that are prone to fires, hunting, trap and catching of wildlife illegally.
- xvi. Conduct regular patrols in the HCV area.
- xvii. Contact the relevant government bodies if any protected wildlife were trapped or injured during the land development.

The existence of Customary forest in Bukit marau as refugia (a safe place for wildlife) 45.66 ha and The presence of wildlife that uses the the river basin (114.08 ha) (sungai langeh dareh, sungai langeh tenang, sungai langeh simpang pelepat, sungai gambir, sungai gedang, sungai cuban, batang langeh, sungai Cuban Tengah, Sungai Cuban Dareh, Sungai Anak Batang Seling, Batang Seling, Sungai Sekabau, Sungai Besah) as wildlife corridor.

- i. Conduct delineation of the entire area of HCV as identified
- ii. Create a definitive map of HCV (boundary point of HCV has coordinate position)
- iii. Provide the boundary sign of buffer zone that surrounding the area of HCV (10 meters from the outer boundary area of HCV).
- iv. Post the signboard identifying the types of HCV, photos of protected animals and warning signs of penalty on poaching or trapping.
- v. Publication and awareness campaign about the presence of HCV areas to internal employees, workers, and surrounding communities.
- vi. Identify the areas that are prone to fires, or threat of illegal hunting/poaching of wildlife.
- vii. Conduct regular patrols around the HCV areas.
- viii. Conduct rapid survey of the frequency and abundance of wildlife using the area as possible refugia.
- ix. Conduct rapid survey of the frequency of the areas utilize as corridor by wildlife.

2. Mangement and Mitigation Plan for HCV 4.

- i. Riparian river as buffers for ecohydrological and ecological, (sungai langeh dareh, sungai langeh tenang, sungai langeh simpang pelepat, sungai gambir, sungai gedang, sungai cuban, batang langeh, sungai cuban tengah, sungai cuban dareh, sungai anak batang seling, batang seling, sungai sekabau, sungai besah, sungai langeh) function. Area size is 114.08 ha.
- ii. Conduct delineation of the entire area of HCV as identified.

RSPO New Planting Procedure Assessment Report

PT Agrindo Indah Persada – Jambi

Page 17 of 19

- iii. Create a definitive map of HCV (boundary point of HCV has coordinate position)
- iv. Put up riparian signboard of buffer zone surrounding the area of the identified HCV (10 meters from the outer boundary area of HCV).
- v. Identify areas that are prone to fires, or threat of illegal hunting/poaching of wildlife.
- vi. Conduct regular patrol around the HCV area.
- vii. Put up the signboard showing the types of HCV presence and warning and consequences of illegal encroachment.
- viii. Publication and awareness campaign on the presence of riparian reserve as HCV areas to internal employees, workers, and surrounding communities.
- ix. Identify and map the border/ riparian areas , including the natural vegetation, palm trees, arable land and open areas within the riparian zones.
- x. Where required improve on the vegetation density along water bodies/ wetlands.
- xi. Measure the discharge/ debris and sedimentation in each of downstream river basin.
- xii. Identify and map areas prone to erosion and landslides.
- xiii. Implement policies and/or SOP to regulate the use of agro-chemical and waste management.
- xiv. Publication and awareness campaign on the SOP on the use of agro-chemicals and waste management.
- xv. Monitor the effectiveness of mitigation of water pollution every 6 months.
- xvi. The erosion potential of the land with a minimum slope of 40% is maintained (all HGU, 1200 ha)
- xvii. Identify and map out the land that has high erosion risk and high runoff of water surface.
- xviii. Apply the technique of erosion control and water conservation in high sloped land (terrace, planting platforms, cover crop, silt pit, etc.).
- ix. Maintain and monitor the erosion on steep land that are set aside as conservation. (No encroachment, no burning etc.).

3. Management and Mitigation plan for HCV 6

- i. The existence of customary forest Bukit marau (45.66 ha) that signify a traditional cultural identity of local communities and as a haven for the Indigenous tribe, Suku Anak Dalam (SAD).
- ii. Conduct routine data collection of the presence of SAD in the area of HCV and HGU
- iii. Provide free access to the SAD and the local community towards the area of Customary forest at Bukit Marau .
- iv. Perform an awareness campaign related to the protection of customary forest Bukit Marau.
- vi. Reinforcement to the institutional and supporting of the maintenance of the entire area of HCV.

RSPO New Planting Procedure Assessment Report
PT Agrindo Indah Persada – Jambi

Page 18 of 19

- vii. Creating the corporate policy on environmental management
- viii. Provision of financial resources to support HCV program
- ix. Produce SOPs related to protection of wildlife, forest encroachment, riparian reserve protection and fire emergency response.
- x. Establish fire emergency response team
- xi. Provide training for specialized HCV monitoring staff
- xii. Establish the organizational structure of HCV area monitoring team.
- xiii. Establish a comprehensive monitoring system of HCV that can be understood by lower management level such as foremen, workers, etc.

Plan for HCV Monitoring and Regular Review of Data

The HCV monitoring and review plan is aimed to evaluate whether the implementation of the management plan are achieved as expected and whether the outputs of the process are as per targets; and whether the resources investments (human, fund, time) are in line with the HCV management plan.

5. Internal responsibility

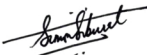
Signing off by HCV & SEIA assessors



Ganip Gunawan
Title: Team leader Assessment PT AIP

Acknowledgement of internal responsibility by PT Agrindo Indah Persada

I the undersigned, being the legal representative of the inspected company, agree with the contents of this report. The TUV Rheinland assessment findings and conclusion are acknowledged and accepted.



Simon Siburat
Title : Group Sustainability Controller.....