

RSPO NOTIFICATION OF PROPOSED NEW PLANTING

This notification shall be on the RSPO website for 30 days as required by the RSPO procedure for new plantings (<http://www.rspo.org/?q=page/535>). It has also been posted on local on site notice boards.

Date of notification: 3 August 2011

Tick whichever is appropriate

<input checked="" type="checkbox"/>	This is a completely new development and stakeholders may submit comments
<input type="checkbox"/>	This is part of an ongoing planting and is meant for notification only

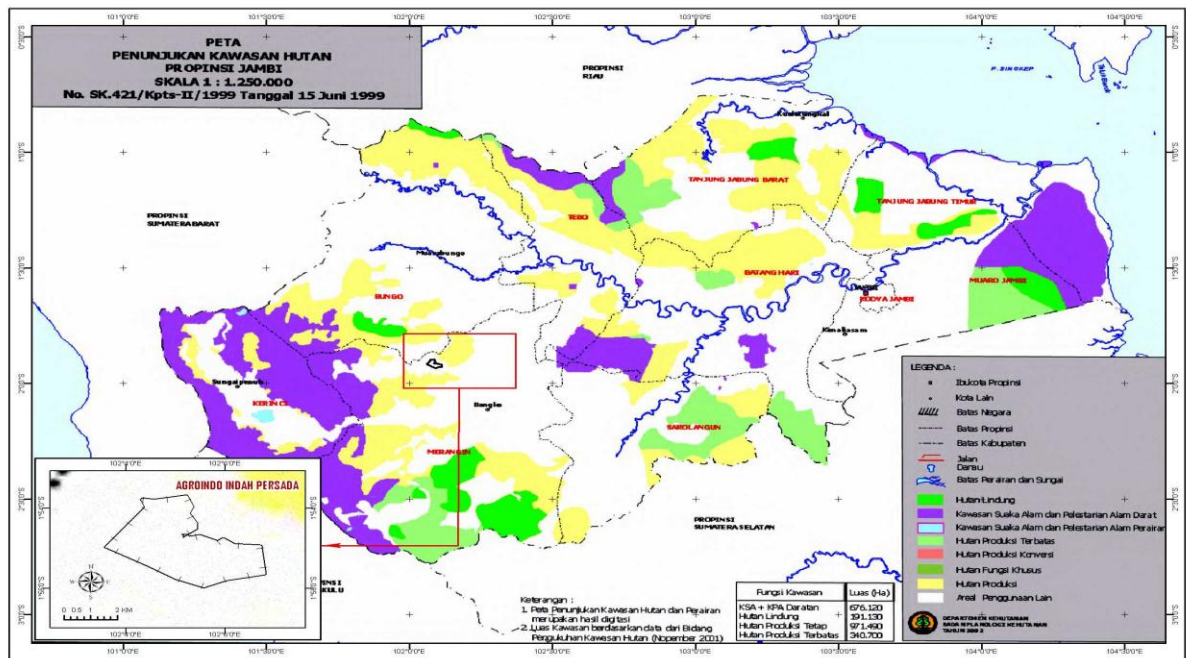
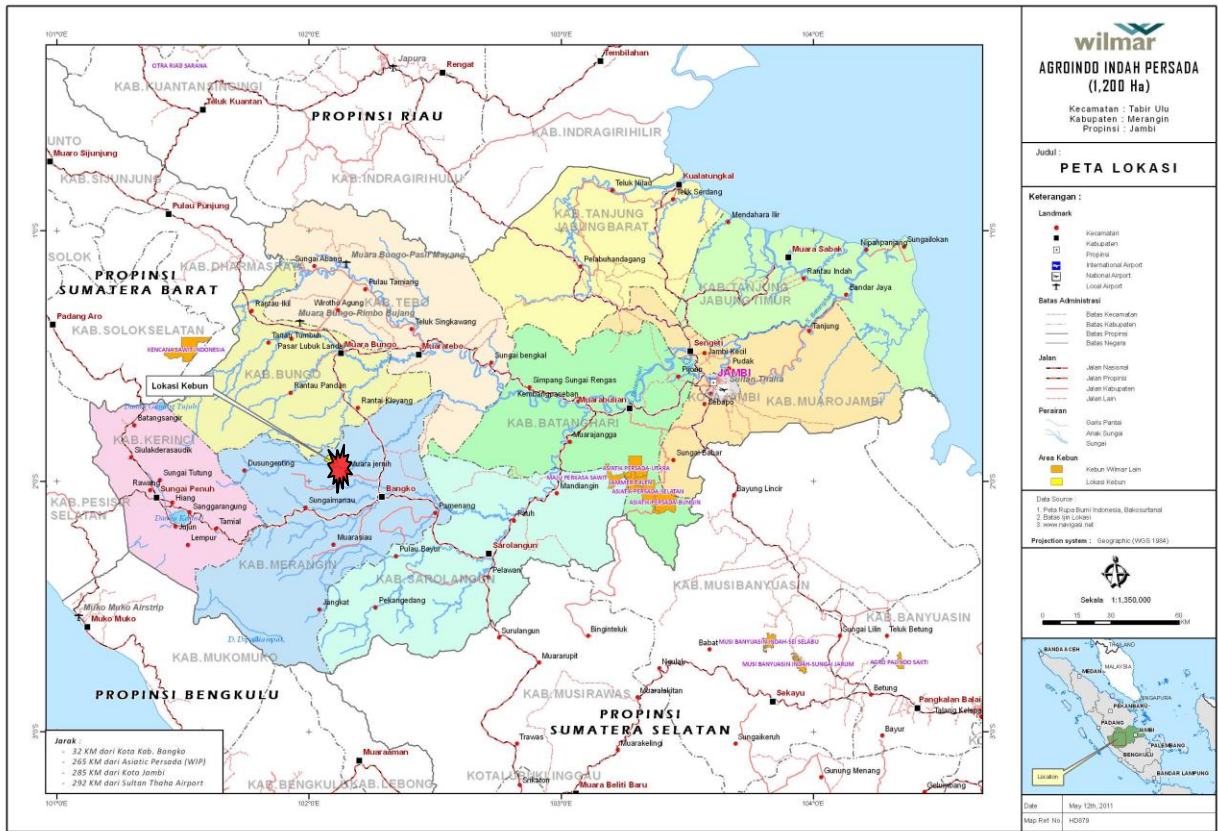
COMPANY : Wilmar International Limited.

SUBSIDIARY : PT Agrindo Indah Persada

RSPO Membership No. : 2-0017-05-000-00

Location of proposed new planting : JAMBI Province with GPS coordinate is S 1°54' to 1°56' and E 102.°4' to 102°7

Jambi Province – INDONESIA



SUMMARY FROM SEI ASSESSMENT

PT Agrindo Indah Persada prepared an SIA for the development in addition to the Environmental Plan. They have also completed a full Social and Environmental Impact Assessment for these developments to comply with RSPO P & C. The SIA included consultation with local stakeholders and included reports of the outcomes of these meetings.

The SIA identified all major positive and negative impacts of all activities. These impacts cover those of roads and infrastructure development.

SUMMARY FROM HCV ASSESSMENTS:

An assessment of HCV's has been completed over the new project area. It identifies high risk areas which could be negatively affected by the development activities. The assessment was also extended to cover the adjacent natural ecosystem. All watercourses have been identified and recommendations have been made on how to manage these natural resources especially the quality of water through the maintenance of the buffer zones alongside all water courses. A customary forest (ca 45 ha) was also identified. And a corridor was also established to manage the HCV 1 present in the area. Some 370 ha or 31% of the project area.

Reputable assessors from RSPO registered HCV assessors have been hired to carry out the assessment in the new project area. The assessor used the Toolkit for Identification of High Conservation Value Indonesia version 2-June 2008 and a report on their findings inclusive the management and monitoring plan was prepared.

SUMMARY OF PLANS :

A number of conclusions were made as a result of SEIA as well as recommendations which are reviewed and accepted by PT Agrindo Indah Persada.

SEIA and HCV forest evaluation have been completed prior to any development and in particular SIA was conducted to determine the needs and expectations of the affected stakeholders.

VERIFICATION STATEMENT:

Refer to Letter Dated 22 July 2011 from TUV Rheinland Malaysia, the Certification Body that was hired to verify the document related to the New Planting Procedures.