

RSPO

RSPO NOTIFICATION OF PROPOSED NEW PLANTING

This notification shall be on the RSPO website for 30 days as required by the RSPO procedures for new plantings (<http://www.rspo.org/?q=page/535>). It has also been posted on local on-site notice boards.

Date of notification: 17th December 2013

Tick whichever is appropriate

<input checked="" type="checkbox"/> (x)	This is a completely new development and stakeholders may submit comments.
<input type="checkbox"/> ()	This is part of an ongoing planting and is meant for notification only.

COMPANY: (MP EVANS GROUP PLC) PT Evans Lestari

RSPO Membership No.: 1-0027-06-000-00

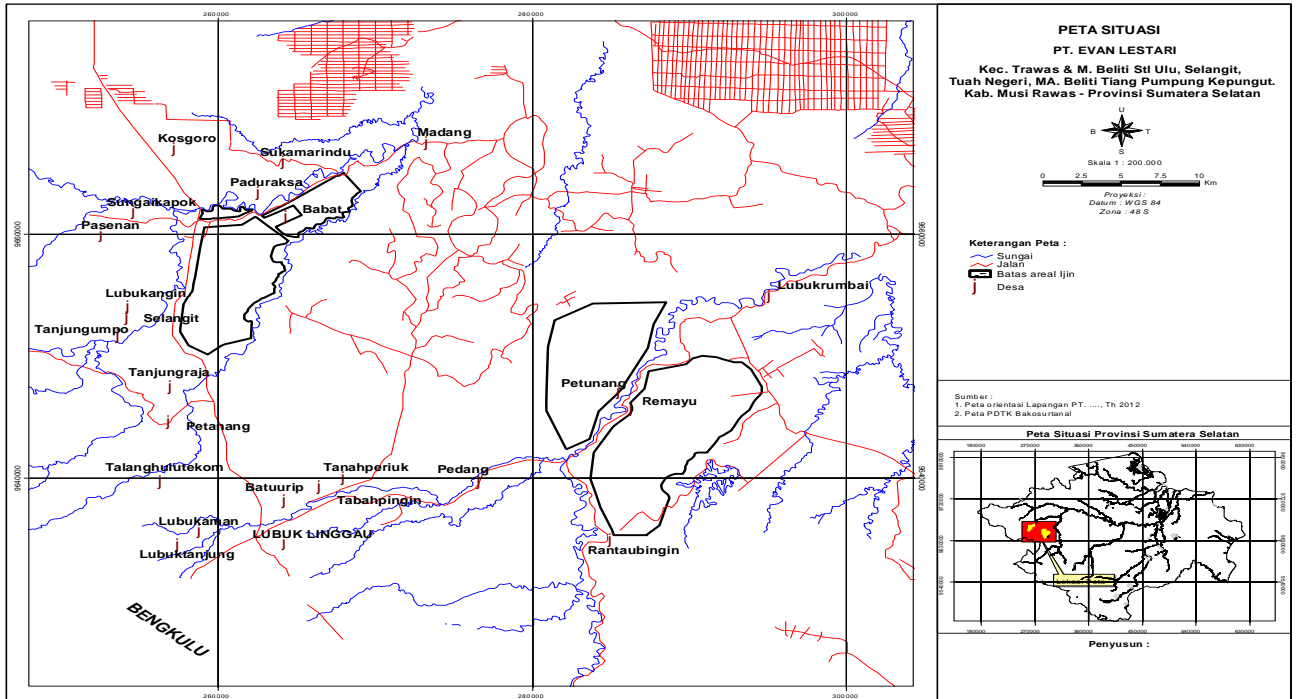
Location of proposed new planting: description or maps and GPS coordinates.

Company Name	:	PT. Evans Lestari (Subsidiaries of MP Evans Group PLC)
Company Address	:	Jl. Lintas Sumatera KM 4 Muara Beliti, Ruko 3 pintu, Kelurahan Pasar Muara beliti, Kab. Musi Rawas, Sumatera selatan 31661
Type of business	:	Oil Palm Plantation.
Status of concession land	:	<p>The status of PT. Evans Lestari (PT.EL) is still permit location, the legal basic of permit location PT. EL is Decree of Musi Rawas Regent No. 578/KPTS/BPM-PTP/2012 dated 30 october 2012, which the cover area are 20.000 ha, located at Muara Beliti sub-district, Tuah Negeri sub-district, Selangit sub-district, Suku Lakitan Tengah sub-district, Tiang Pupung Kepungut sub-district and Ulu Terawas sub-district, Musi Rawas Regency, South Sumatera Province. This Company until October 2013 has not been in operation in the field.</p> <p>PT. Evans Lestari (PT.EL) also has the Plantation Business Permit (IUP) with legal are Decree of Musi</p>

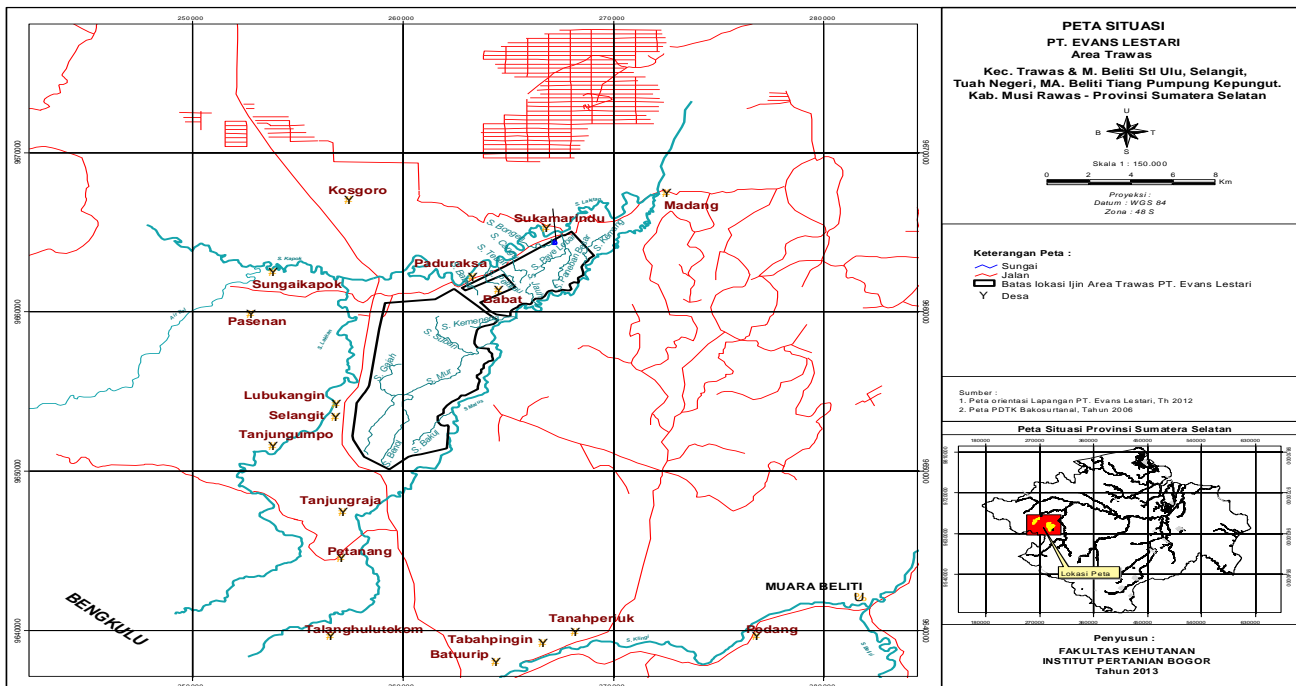
RSPO

		Rawas Regent No.891/KPTS/DISBUN/2012 dated November 21, 2012. Meanwhile, the feasibility of the environment based on AMDAL document that has been prepared by PT. Evans Lestari (PT.EL) obtained in 2013, by Regent of Musi Rawas Decree No.121/KPTS/BLHD/2013 dated February 14, 2013.
Contact Person	:	Mr. Gunasekaran Uthiradam
Location	:	Musi Rawas Regency (Muara Beliti sub-district, Tuah Negeri sub-district, Selangit sub-district, Suku Lakitan Tengah sub-district, Tiang Pupung Kepungut sub-district and Ulu Terawas sub-district) - South Sumatera Province
GPS References	:	102°49'08,5"- 102°55'21,9" E 03°09'48,9"- 03°10'42,5" S
Surrounding Entities	North	: Lakitan riverside, production forests, fields, gardens and : Village
	South	Limited Production Forests, Bukit Getan Protected : Forests, Bukit Besar protected forests, and Bukit : Cogong protected forests, fields, gardens and human settlements.
	West	Limited Production Forest, Forest Preserves, Lakitan Riverside, fields, gardens and human settlements..
	East	Malus riverside, Bukit Getan Protected Forests, Bukit Besar protected forests, and Bukit Cogong protected forests, Forest Preserves, fields, gardens and human settlements.

RSPO

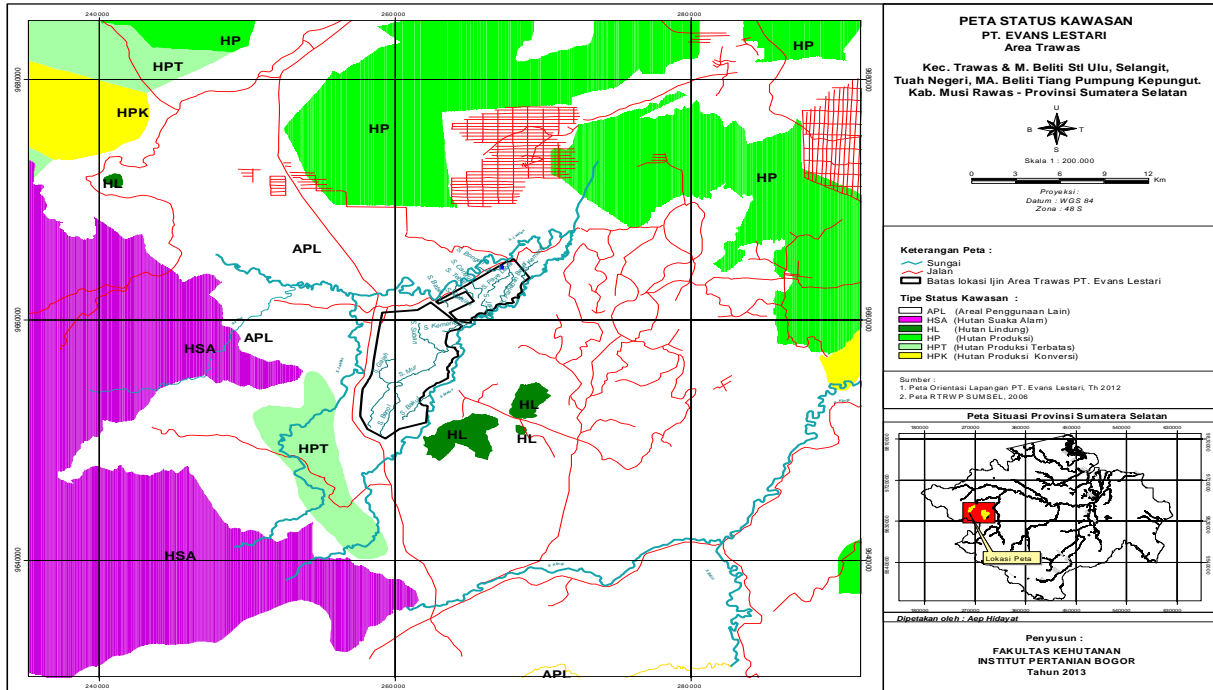


Picture 1. Location of Palm Oil Plantation (Terawas and Beliti) PT. Evans Lestari (PT. EL).

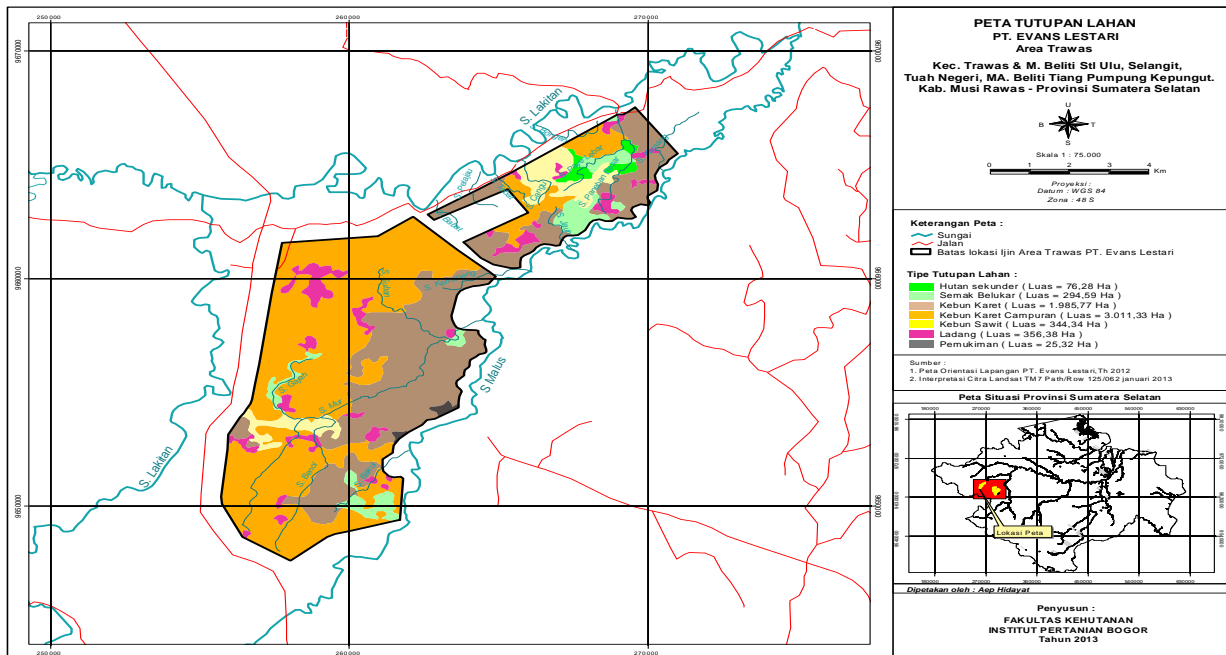


Picture 2. Map of Terawas Area PT. Evans Lestari (PT. EL).

RSPO

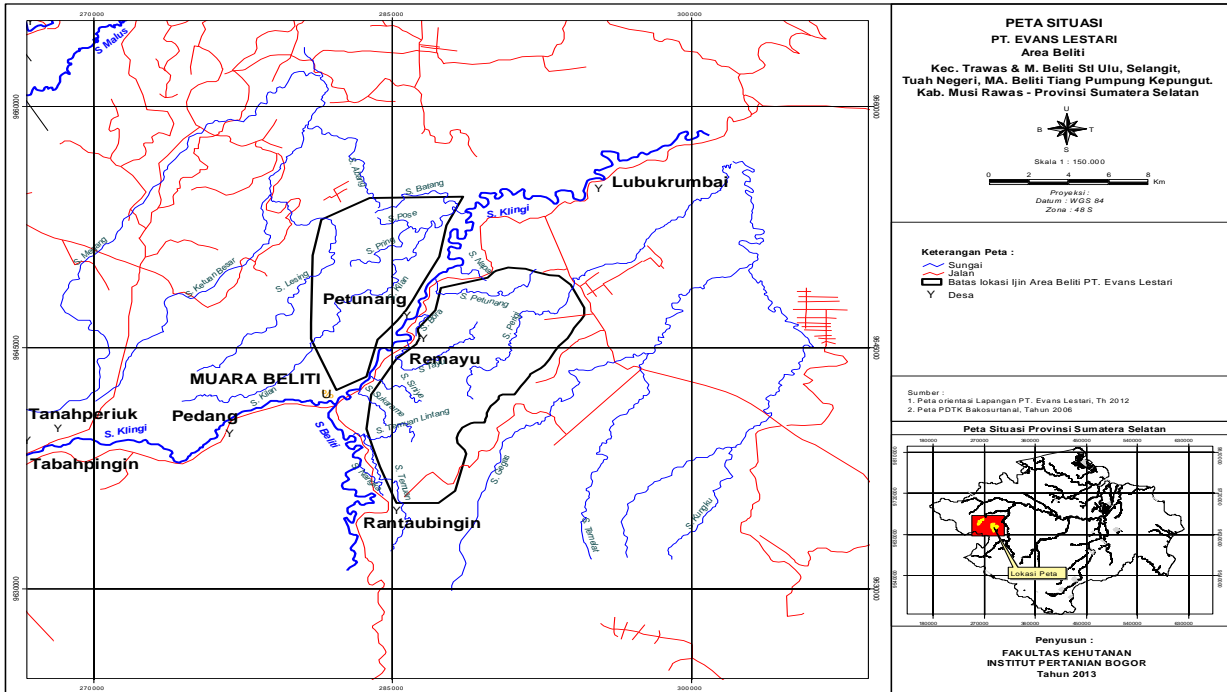


Picture 3. Land Status of Terawas Area PT. Evans Lestari Based on Land Use Maps.

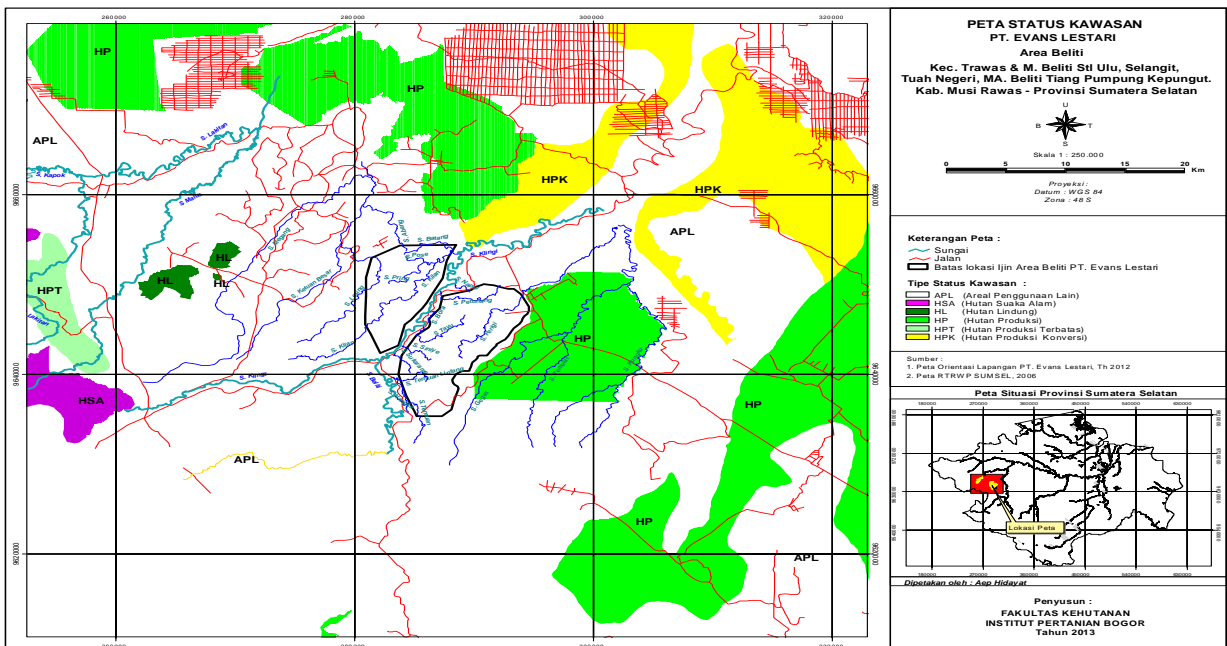


Picture 4. Land Cover Map of Terawas area PT. Evans Lestari (PT. EL).

RSPO

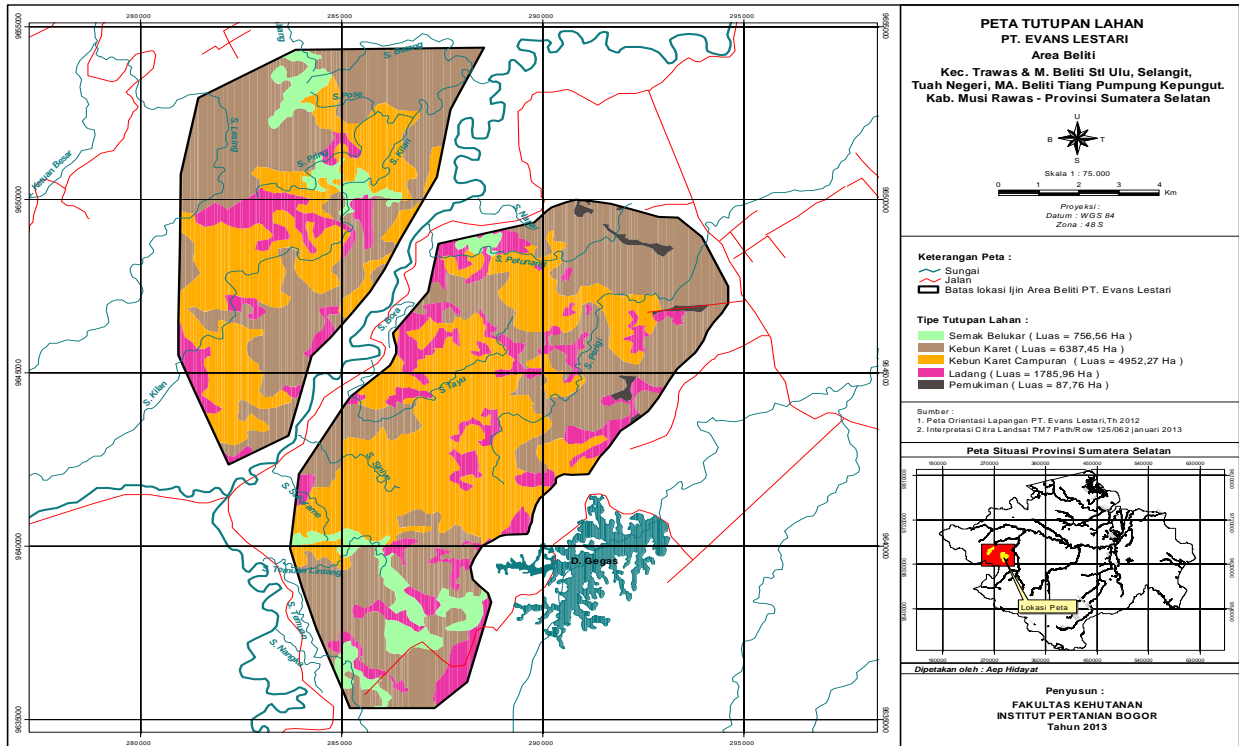


Picture 5. Map of Beliti Area PT. Evans Lestari (PT. EL).



Picture 6. Land Status of Beliti Area PT. Evans Lestari Based on Land Use Maps (TGHK)

RSPO



Picture 7. Land Cover Map of Beliti Area PT. Evans Lestari (PT. EL).

SUMMARY FROM SEI ASSESSMENTS:

Assessors and their credentials:

Handian Purwawangsa, He is a team leader for SIA Assessment from Faculty of Forestry – IPB, experts in social and cultural. He obtained his Master's degree in Forestry from Faculty of Forestry – IPB. He has experienced in Social and Cultural Assessment since 2002. Currently, He is also a Director of Kajian Kerakyatan dan Pembangunan berbasis Sumberdaya (SINTESA).

Dr Ir Jarwadi Budi Hernowo, He is a member of SIA team from Faculty of Forestry – IPB that has experienced in wildlife. He obtained his Master's degree in wildlife ecology from Gottingen University – Germany in 1995. He is experienced in biodiversity assessment since 1999. Currently, He is also a lecturer in Department of Biodiversity and Conservation of Faculty of Forestry – IPB.

Koswara, Born in Cianjur, 5 June 1977. Graduated from the University Pakuan Bogor in 2003 as a Bachelor of Economics. Has long experience in the field of social impact assessment that has been started since 2007. Experts in social and cultural studies, in particular the problems of social dynamics in the community.

Rizky Ali Akbar, He is an SIA Assessor from Faculty of Forestry – IPB, graduated from Department of Social and Economic – IPB. He has experienced in social assessment since 2005.

Wahid Ihsani Putera, S.Pt, The man who was born in Solo, at June 26, 1988 is completing his S1 studies at the Faculty of Animal Husbandry, Bogor Institute of Agriculture (IPB) in 2010. Experience in the study of social studies has been started since attending college as an assistant lecturer. Have experience in facilitating the problems between people / farmers with the company.

Assessment Methods (data sources, collection, dates, program, and visited places)

The SEIA Assessment (Social & Environment Impact Assessment) was done by Faculty of Forestry Institut Pertanian Bogor (IPB) for 8 days dated 15-23 maret 2013, consist of composition team, named: Dr.Ir. Jarwadi budi Hernowo MScF, Koswara SE, Rizky Ali Akbar SP, Wahid Ihsan Putera S.Pt and Handian Purwawangsa, SHut, MSi as chairman team. The assessments were conducted by field observations, interviews, FGD (Focus Group Discussion) and document reviews.

Stages of the SIA assessment include:

1. Social rapid Assessment
2. Document reviews
3. Participatory mapping

Data collection method include :

1. Primary and secondary data reviews
2. Dialogues
3. Field Observations
4. In-depth Interviews
5. Triangulation

The methods used to analyze the social impacts and risks were qualitative using the tools of sustainable livelihood, RSPO Principles and Criteria, FPIC principles, national laws and regulations, and other applicable standards.

Public consultation was conducted on 18th September 2013 to obtain feedback from the findings of HCV and SEIA from various interested parties. Inputs from the public consultation are documented as evidence in the Final HCV and SEIA reports.

The Public Consultation was attended by Faculty of Forestry Institut Pertanian Bogor (IPB), PT. EL employees, community leaders, traditional leaders, village chiefs, district representatives, government agencies such as Agriculture and Forestry Departments, Department of Environment and other stakeholders.

SUMMARY FROM HCV ASSESSMENT(S):

Assessors and their credentials

Dr Ir Jarwadi Budi Hernowo, He is a team leader for HCV Assessment from Faculty of Forestry – IPB that has experienced in wildlife. He obtained his Master's degree in wildlife ecology from Gottingen University – Germany in 1995. He is experienced in biodiversity assessment since 1999. Currently, He is also a lecturer in Department of Biodiversity and Conservation of Faculty of Forestry – IPB.

Dr. Ir. Cahyo Wibowo, Born in Semarang, 19 September 1960. As a member of HCV team from the Faculty of Forestry Institut Pertanian Bogor (IPB), an expert in the field of environmental services. He earned a Master of Science in Tropical Forestry from the Faculty of Forestry University of Gottingen, Germany in 1993, and a Doctorate in the field of Silviculture and Soil Science, Bogor Agricultural University (IPB) in 2006. Experience in the study of HCV in the area of Industrial Plantation Forest, Natural Forest Production, and oil palm plantations, especially in terms of environmental services has been started since 2010. A variety of experiences in the field of soil science and hydrology ever lived, such as feasibility surveys on various plantations and mangrove forests, and as head of the laboratory analysis of the soil at the Korean International Cooperation Agency project in Rumpin / Bogor (2006 to 2007). He currently serves as the Director of Forest Resources in Forest Mount Walat Education, Faculty of Forestry IPB. In the Faculty of Forestry, Bogor Agricultural University (IPB), teaching subjects Silviculture and Soil Science.

RSPO

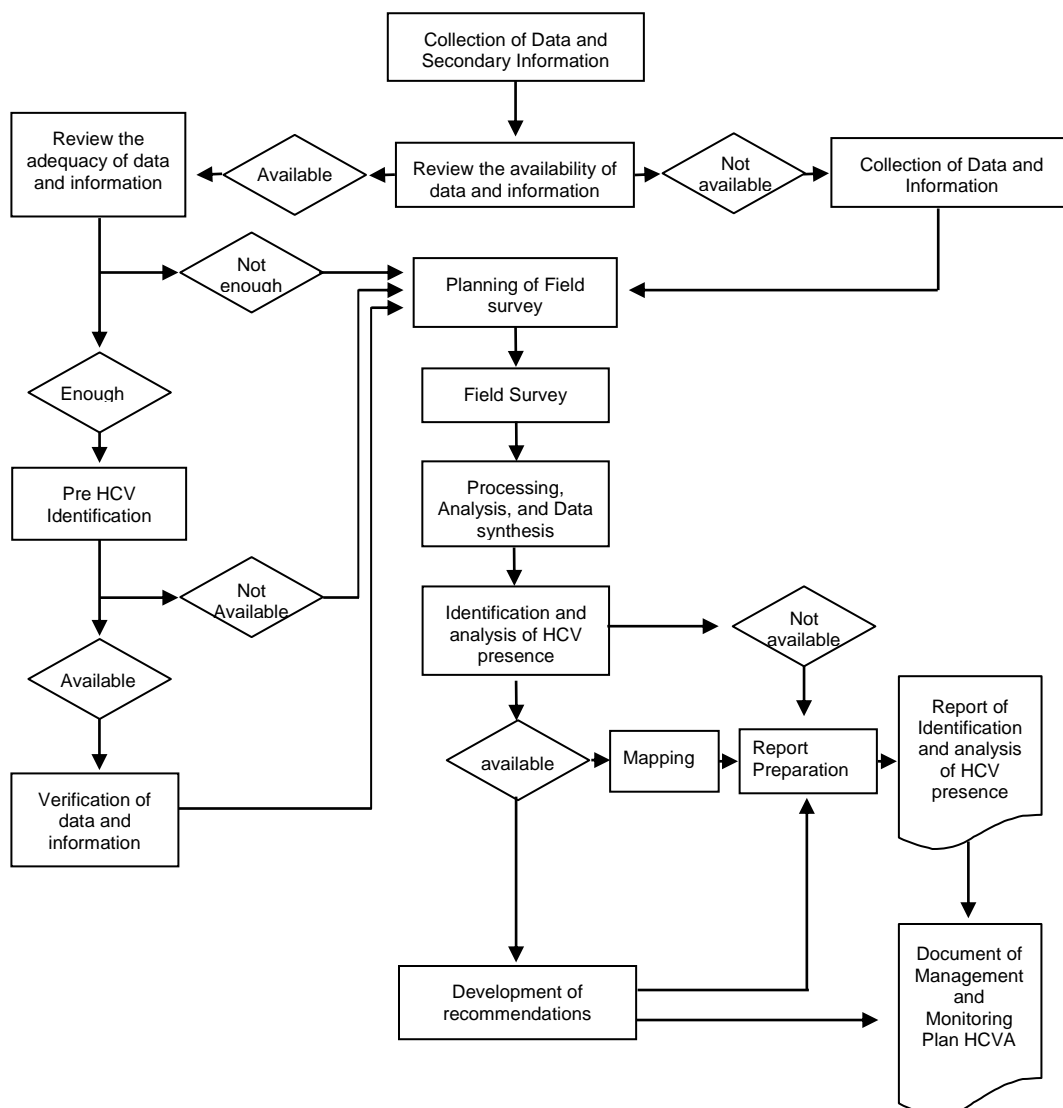
Ir. Siswoyo M.Si, He is a member of HCV team from Faculty of Forestry – IPB. He obtained his Master’s degree in Forest Management from Faculty of Forestry – IPB. He has experienced in HCV assessment for Oil Palm Plantation since 1999, especially for Ecology of Flora. In 2005, he has involved in Forest Baseline Appraisal of Perum Perhutani Unit II – East Java. Currently, He is also a lecturer in Department of Biodiversity and Conservation of Faculty of Forestry – IPB.

Assessment Methods (data sources, collection, dates, program, and visited places)

HCV (High Conservation Value) Assessment Methodology

The HCV (High Conservation Value) assessor teams consisting of experts in Biodiversity, Environmental Services, Social and Cultural Rights and supported by GIS experts, collected data facilitated by staff from the plantation and assisted by surrounding village community. The SEIA (Social & Environment Impact Assessment) was also conducted together with the HCV (High Conservation Value) assessment and done in the same manner.

Identification of HCV (High Conservation Value) was generally done through a series of stages from pre-assessment and field survey to analysis of the final results. The stages of these activities can be seen briefly in the diagram below.



RSPO

Tabel 1. Assessment Process, Methodology and Data Achievement.

Stages	Objective	Activity
PRE - FIELD		
<i>Pre-assessment and Preparation</i>	<ul style="list-style-type: none"> - To Identify potential indications of the existence and attributes or elements of HCV - To Identify potential areas of HCV - To get better Understanding on the landscape context - To Know the issues of conservation and threats potential against HCV - To establish the methods, survey design, the study of implementation team, and time frame of field activity 	<ul style="list-style-type: none"> - To collect data and initial information from the company regarding the status of development and management plant. - To collect data and initial information from secondary sources (reports, journals, books, statistical data, base maps) and resources. - To perform data analysis and spatial analysis
FIELD		
<i>Opening meeting & basic training on HCV</i>	<ul style="list-style-type: none"> - To deliver the intention and the purposes of the HCV Assessment. - To obtain the data and additional information regarding the status of development and management plant. - To develop an understanding of unit management about HCV: background, aims and objectives, concepts, types of HCV, attributes or key elements, and methods of Identification - To establish a working team (HCV assessment team + unit management team as the counterpart) and the agreed of work schedule 	<ul style="list-style-type: none"> - Workshop with the company management unit. - Training for the company management unit.
<i>Participatory Mapping</i>	<ul style="list-style-type: none"> - To clarify the potential area of HCV as the pre-assessment result - To collect the additional information about the existence of the HCV attribute or element. 	<ul style="list-style-type: none"> - Workshop with sources

RSPO

<i>Field Survey</i>	<ul style="list-style-type: none"> - To verify the existence of the HCV attribute or element - To Identify the HCV area and mapping the boundaries of the area indicative of HCV. - Identify the threat and potential threats toward HCV. 	<ul style="list-style-type: none"> - To check the field of land cover - Collecting the data through interviewing the triangulasi
<i>Public Consultation</i>	<ul style="list-style-type: none"> - To present the result of HCV identification to others (society, local governments, LSM) - To compile the additional information and clarifications regarding the existence of the HCV attribute or element and the threat or potential threat toward HCV. - To gather the input for the recommendations development and options for HCV management plan 	<ul style="list-style-type: none"> - Workshop with key stakeholders - FGD with key stakeholders - Interview with sources
<i>Field Analysis & Interim</i> <i>To present the temporary Conducting the interim report</i> <i>Conduction</i>	<ul style="list-style-type: none"> - Result of the activity field study. 	<ul style="list-style-type: none"> - Interim report
<i>Closing meeting</i>	<ul style="list-style-type: none"> - To present the temporary result of HCV identification to unit management 	<ul style="list-style-type: none"> - Presentation and discussion - Submit the interim report
POST - FIELD		
<i>Analysis & Report</i>	<ul style="list-style-type: none"> - To present the HCV assessment in systematic format which meets the scientific principles, simple yet coherent and understandable by the management as the primary users report. 	<ul style="list-style-type: none"> - Data analysis. - Spatial analysis - Report preparation

RSPO

SEIA (Social & Environment Impact Assessment) Assessment Methodology

The SEIA Assessment (Social & Environment Impact Assessment) was done by Faculty of Forestry Institut Pertanian Bogor (IPB) for 8 days dated 15-23 Maret 2013, consist of composition team, named: Dr.Ir. Jarwadi budi Hernowo MScF, Koswara SE, Rizky Ali Akbar SP, Wahid Ihsan Putera S.Pt and Handian Purwawangsa, SHut, MSi as chairman team. The assessments were conducted by field observations, interviews, FGD (Focus Group Discussion) and document reviews.

Stages of the SIA assessment include:

1. Social rapid Assessment
2. Document reviews
3. Participatory mapping

Data collection method include:

1. Primary and secondary data reviews
2. Dialogues
3. Field Observations
4. Indepth Interviews
5. Triangulation

The methods used to analyze the social impacts and risks were qualitative using the tools of sustainable livelihood, RSPO Principles and Criteria, FPIC principles, national laws and regulations, and other applicable standards.

Public consultation was conducted on 18th September 2013 to obtain feedback from the findings of HCV and SEIA from various interested parties. Inputs from the public consultation are documented as evidence in the Final HCV and SEIA reports.

The Public Consultation was attended by Faculty of Forestry Institut Pertanian Bogor (IPB), PT. EL employees, community leaders, traditional leaders, village chiefs, district representatives, government agencies such as Agriculture and Forestry Departments, Department of Environment and other stakeholders.

Summary of HCV Findings

From the HCV (High Conservation Value) assessment it was found that the area consists of:

- | | |
|--|-------------|
| - Terawas area Total HCV Area (ha) | : 78.86 ha |
| - Beliti area Total HCV Area (ha) | : 401.53 ha |
| - Total HCV Area PT. Evans Lestari (EL) (ha) | : 480.39 ha |
| - Total Permit Location Area PT. Evans Lestari (EL) (ha) | : 20.000 ha |
| - Total HCV Area PT. Evans Lestari (EL) (%) | : 2.40 % |

RSPO

Table 2. Summary of HCV findings at PT. Evans Lestari (PT. EL).

Description and Broad Indicative of HCV PT. Evans Lestari (PT.EL)				
IPB Consultant				Description
Area	HCV type	Location	Broad (Ha)	
Terawas	4.1	Paye Lebar Riverside	3.61 Ha	<ul style="list-style-type: none"> • At Terawas area was found riparian ecosystems (Riverside and lake neighborhood). • At Terawas area was found Riverside and lake neighborhood. • People use the rivers and the lakes that are in the Terawas area to meet their needs of wáter and protein (fish)
		Cangu Riverside	3.52 Ha	
		Tebat Riverside	1.17 Ha	
		Pelajau Riverside	0.69 Ha	
		Babat Riverside	0.60 Ha	
		Kemeneng Riverside	3.16 Ha	
		Suban Riverside	10.47 Ha	
		Kemang Riverside	3.04 Ha	
		Jauh Riverside	2.65 Ha	
	Sebrang Lakeside	1.91 Ha		
	Sub Total 4.1		30.82 Ha	
	1.3 & 4.1	Paneban Besar Riverside	8.40 Ha	<ul style="list-style-type: none"> • At Terawas area was found riparian ecosystems (Riverside and lake neighborhood). • At Terawas area was found Riverside and lake neighborhood. • People use the rivers and the lakes that are in the Terawas area to meet their needs of wáter and protein (fish) <p>At Terawas area also contained wildlife and plant spesies that are found directly that protected by the Government Regulation (PP) no. 7 year 1999 and included in CITES Appendix II :</p> <ul style="list-style-type: none"> • Paku tiang (<i>Cyathea latebrosa</i> (Wall.) Copel.)
		Bongen Riverside	1.00 Ha	
		Mur Riverside	18.04 Ha	
		Benol Riverside	10.70 Ha	
		Gajah Riverside	4.06 Ha	
		Bakul Riverside	5.84 Ha	

RSPO

				<ul style="list-style-type: none"> • Anggrek tebu (<i>Grammatophyllum speciosum</i> Bl.) • <i>Ratufa bicolor</i> • <i>Presbytis melalophos</i> • <i>Halcyon smyrnensis</i> • <i>Anthreptes malacensis</i>
		Sub Total 1.3 & 4.1	48.04 Ha	
Total HCV Area Terawas			78.86 Ha	
Beliti	4.1	Temuan Riverside	14.21 Ha	<ul style="list-style-type: none"> • At Beliti area was found riparian ecosystems (Riverside). • At Beliti area was found Riverside. • People use the rivers that are in the Beliti area to meet their needs of wáter and protein (fish)
		Sukarame Riverside	5.81 Ha	
		Seniye Riverside	15.12 Ha	
		Tayu Riverside	29.20 Ha	
		Abang Riverside	3.18 Ha	
		Batang Riverside	5.81 Ha	
		Pose Riverside	5.65 Ha	
		Pring Riverside	7.16 Ha	
		Lesing Riverside	51.58 Ha	
		Sub Total	137.72 Ha	
	1.3 & 4.1	Napal Riverside	0.24 Ha	<ul style="list-style-type: none"> • At Beliti area was found riparian ecosystems (Riverside). • At Beliti area was found Riverside. • People use the rivers that are in the Beliti area to meet their needs of wáter and protein (fish)
		Petunang Riverside	23.97 Ha	
Perigi Riverside		98.19 Ha	At Beliti area also contained	

RSPO

	Kilan Riverside	141.41 Ha	wildlife and plant spesies that are found directly that protected by the Government Regulation (PP) no. 7 year 1999 and included in CITES Appendix II : <ul style="list-style-type: none"> • Paku tiang (<i>Cyathea latebrosa</i> (Wall.) Copel.) • <i>Ratufa bicolor</i> • <i>Presbytis melalophos</i> • <i>Halcyon smyrnensis</i> • <i>Anthreptes malacensis</i>
	Sub Total 1.3 & 4.1	263.81 Ha	
Total HCV Area Beliti		401.53 Ha	
Total HCV Area PT. Evans Lestari (Ha)		480.39	
Total Permit Location Area PT. Evans Lestari (Ha)		20000	
Total HCV Area (%)		2.40	

SUMMARY OF PLANS:

Development of HCV and SIA Management Plans

PT. Evans Lestari (PT.EL) is one of the companies under MP Evans Group PLC as the parent of the company, which is a member of the RSPO (membership number 1-0027-06-000-00). The area of palm oil plantation of PT. Evans Lestari (PT.EL) is located in the Sumatera islands, which is administratively located in Musi Rawas regency, South Sumatera Province.

The status of PT. Evans Lestari (PT.EL) is still permit location, the legal basic of permit location PT. EL is Decree of Musi Rawas Regent No. 578/KPTS/BPM-PTP/2012 dated 30 october 2012, which the cover area are 20.000 ha, located at Muara Beliti sub-district, Tuah Negeri sub-district, Selangit sub-district, Suku Lakitan Tengah sub-district, Tiang Pupung Kepungut sub-district and Ulu Terawas sub-district, Musi Rawas Regency, South Sumatera Province. This Company until October 2013 has not been in operation in the field.

PT. Evans Lestari (PT.EL) also has the Plantation Business Permit (IUP) with legal Decree of Musi Rawas Regent No.891/KPTS/DISBUN/2012 dated November 21, 2012. Meanwhile, the feasibility of the environment based on AMDAL document that has been prepared by PT. Evans Lestari (PT.EL) obtained in 2013, by Regent of Musi Rawas Decree No.121/KPTS/BLHD/2013 dated February 14, 2013.

RSPO

In managing the plantation area, PT. Evans Lestari (PT.EL) divides its territory into two parts as follow:

- Terawas Area
- Beliti Area

Terawas Area.

Terawas Area of PT. Evans Lestari administratively located at Suku Lakitan Tengah sub-district (Terawas village, Babat and Sri Mulyo villages), Selangit Sub-district (Selangit Village, lubuk Ngin and Lubuk Ngin Baru villages), Ulu Terawas Sub-District (Paduraksa and Suka merindu villages), Musi Rawas Regency, South Sumatera Province, with area are 6.094 ha.

Based on land use maps (TGHK) and spatial agreement maps of South Sumatera Province, Terawas area of PT. Evans Lestari are in Other Uses Area (APL). This information indicates that the existences of Terawas Area which is in the status area of APL will provide assurance that the area in the secure category. This is because of the APL area earmarked for the development of non-forestry cultivation. However for areas such as production forest land status are included in the less secure category because of the production forest area earmarked for the development of forestry cultivation.

Based on the documents of AMDAL of PT. Evans Lestari year 2012 and the observations in the field, land cover in the Terawas Area PT. Evans Lestari mostly are rubber plantations.

Tabel 3. Land Cover Condition at Terawas Area PT. Evans Lestari.

No.	Land Cover	Broad	
		Ha	%
1	Secondary Forest	76.28	1.25
2	Rubber Plantation	1985.77	32.59
3	Mix Rubber Plantation	3011.33	49.41
4	Palm Oil Plantation	344.34	5.65
5	Shrubbery	294.59	4.83
6	Garden	356.38	5.85
7	Settlement	25.32	0.42
Total		6.094.01	100.00

Beliti Area.

Beliti area of PT. Evans Lestari administratively located at Tuah Negeri sub-district (Remayu, Petunang and Bamasco villages), Muara Beliti Sub-district (Suro and Muara Beliti Baru villages), Tiang Pumpung Kepungut Sub-District (Simpang Gegas and Rantau Bingin villages), Musi Rawas Regency, South Sumatera Province, with an area of 13.970 ha.

RSPO

Based on land use maps (TGHK) and spatial agreement maps of South Sumatera Province, Beliti area of PT. Evans Lestari are in Other Uses Area (APL). This information indicates that the existences of Beliti Area which is in the status area of APL will provide assurance that the area in the secure category. This is because of the APL area earmarked for the development of non-forestry cultivation.

Based on the documents of AMDAL of PT. Evans Lestari year 2012 and the observations in the field, land cover in the Beliti Area PT. Evans Lestari mostly are rubber plantations

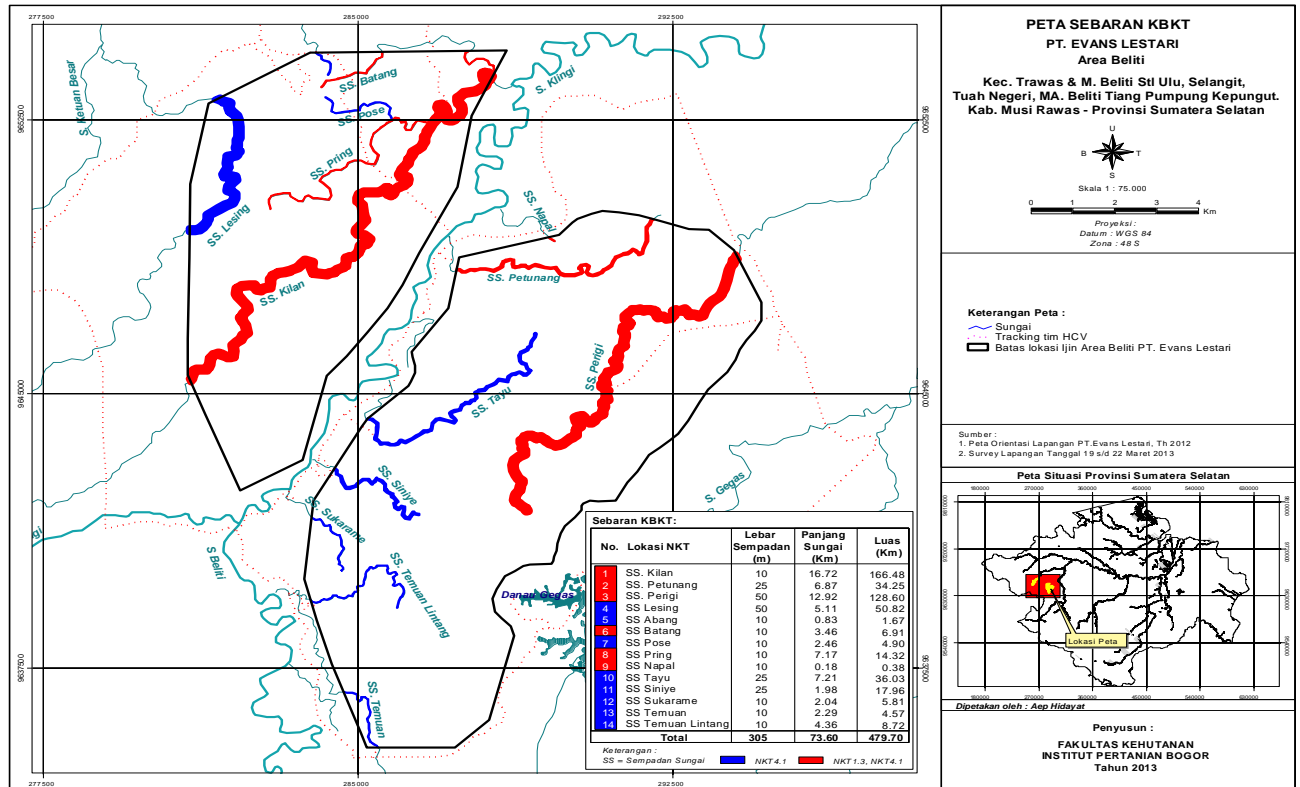
Tabel 4. Land Cover Condition at Beliti Area PT. Evans Lestari.

No.	Land Cover	Broad	
		Ha	%
1	Secondary Forest	0	0
2	Rubber Plantation	6387.45	45.72
3	Mix Rubber Plantation	4952.27	35.45
4	Shrubbery	756.56	5.42
5	Garden	1785.96	12.78
6	Settlement	87.76	0.63
Total		13.970.00	100.00

PT. Evans Lestari (PT.EL) has conducted HCV (High Conservation Value) Assessment carried out by Faculty of Forestry Institut Pertanian Bogor (IPB) Consulting lead by Dr.Ir.Jarwadi Budi Hernowo, MScF. Dr.Ir.Jarwadi Budi Hernowo, MScF as team leader HCV Institut Pertanian Bogor (IPB) Forestry Faculty with expertise as a wildlife expert .Obtained his Master of Science degree in the forestry field of wildlife ecology from Faculty of Forestry Gottingen University – Jerman in 1995.Obtained his Doctorate from Institut Pertanian Bogor (IPB) in 2011. IPB Consulting carried out HCV (High Conservation Value) assessment of PT. Evans Lestari (PT.EL) in Maret 2013. The scope of the HCV assessment in PT. Evans Lestari (PT.EL) performed by area 20.000 ha.

The SEIA Assessment (Social & Environment Impact Assessment) was done by Faculty of Forestry Institut Pertanian Bogor (IPB) for 8 days dated 15-23 maret 2013, consist of composition team, named: Dr.Ir. Jarwadi budi Hernowo MScF, Koswara SE,Rizky Ali Akbar SP, Wahid Ihsan Putera S.Pt and Handian Purwawangsa, SHut, MSi as chairman team. The assessments were conducted by field observations, interviews, FGD (Focus Group Discussion) and document reviews.

RSPO



Picture 10. Map of HCV area Beliti PT. Evans Lestari (PT. EL).

RSPO

SUMMARY OF PLANS:

1. Summary of Management and Mitigation Plan (SEIA)

No.	Program	Activity	Action Plan	PIC	Target
1	Resolve the issue of land compensation around companies	Socialization and land compensation process.	<ol style="list-style-type: none"> 1) Socialization and land compensation process. 2) Available SOP Communication and Consultation 3) Available SOP Compensation of crops (GRTT). 4) Compensation documents. 5) Implementation of consultation activities and socialization stakeholder to communities and villages around the estate (external socialization). 6) Available internal and external complain books. 7) Available inform request books. 8) Determination the clear boundaries between the villages that surround the company 	GM, SM, Estate Manager, Public Relation (Pemitra), RSPO Dept	2013 and 2014
2	Socialization system of cooperation that offered to the land owners.	Socialization the company's program repeatedly both formally and informally.	<ol style="list-style-type: none"> 1) Available SOP Communication and Consultation. 2) Available SOP internal and external complaint. 3) Implementation of consultation activities and socialization stakeholder to communities and villages around the estate (external socialization). 4) Available internal and external complain books. 5) Available inform request books. 	GM, SM, Estate Manager, Public Relation (Pemitra), RSPO Dept.	2013 and 2014

RSPO

No.	Program	Activity	Action Plan	PIC	Target
3	Improve the local economy.	Analizing the economic potential around PT. Evans Lestari.	<ol style="list-style-type: none"> 1) Job Opportunities for the communities around PT. Evans Lestari. 2) Implementation of CSR activities on a regular basis to the communities around company. 3) Available SOP Community Development. 4) Available SOP Relief. 5) Establish of KKPA program as a corporate partner. 6) Priority a chance of provision of goods and services to the communities around PT. Evans Lestari. 	GM, SM, Estate Manager, Public Relation (Pemitra)	2013 and 2014
		Increasing capacity in order to create business opportunities and alternative livelihoods.	<ol style="list-style-type: none"> 1) Establish of KKPA program as a corporate partner. 2) Conduct training, socializing, briefing and meeting to members of cooperative. 3) Implementation of consultation activities and socialization stakeholder to communities and villages around the estate (external socialization). 4) Available SOP communication and consultation. 5) Available SOP internal and external complaint. 6) Available internal and external complain books. 7) Available inform request books. 	GM, SM, Estate Manager, Public Relation (Pemitra), RSPO Dept.	2013 and 2014

RSPO

No.	Program	Activity	Action Plan	PIC	Target
		Employment of local people surround PT. Evans Lestari.	<ol style="list-style-type: none"> 1) Job Opportunities for the communities around PT. Evans Lestari. 2) Implementation of CSR activities on a regular basis to the communities around company. 3) Available SOP Community Development. 4) Available SOP Relief. 5) Available SOP Communication and Consultation 6) Available SOP Internal and external complaint. 7) Available internal and external complain books. 8) Available inform request books. 	GM, SM, Estate Manager, Public Relation (Pemitra), RSPO Dept.	2013 and 2014
4	Build communication and networking with all stakeholders associated with PT. Evans Lestari.	Conduct regular meetings with all stakeholders.	<ol style="list-style-type: none"> 1) Implementation of consultation activities and socialization stakeholder to communities and villages around the estate (external socialization). 2) Available SOP Communication and Consultation. 3) Available SOP Internal and External complaint. 4) Available internal and external complain books. 5) Available inform request books 6) Implementation of CSR activities on a regular basis to the communities around company. 	GM, SM, Estate Manager, Public Relation (Pemitra), RSPO Dept.	2013 and 2014

RSPO

No.	Program	Activity	Action Plan	PIC	Target
			<ul style="list-style-type: none"> 7) Available SOP Community Development. 8) Available SOP Relief. 		
5	Improvement of infrastructure and social facilities villagers.	Improvement of infrastructure and social facilities plan	<ul style="list-style-type: none"> 1) Implementation of CSR activities on a regular basis to the communities around company. 2) Priority a chance of provision of goods and services to the communities around PT. Evans Lestari. 3) Available SOP Community Development. 4) Available SOP Relief. 	GM, SM, Estate Manager, Public Relation (Pemitra)	2013 and 2014
		a. Repairing roads and bridges.	<ul style="list-style-type: none"> 1) Program of building and maintenance company's road and bridge. 2) Implementation of CSR activities on a regular basis to the communities around company. 3) Priority a chance of provision of goods and services to the communities around PT. Evans Lestari. 	GM, SM, Estate Manager, Public Relation (Pemitra)	2013 and 2014

RSPO

2. Summary of Management and Mitigation Plan (HCV)

Description and Indication area of HCV PT. Evans Lestari (PT.EL)							
IPB Consultant				Description	Action Plan	PIC	Target
Area	HCV Type	Location	Broad (Ha)				
Terawas	4.1	Paye Lebar Riverside	3.61 Ha	<ul style="list-style-type: none"> • At Terawas area was found riparian ecosystems (Riverside and lake neighborhood). • At Terawas area was found Riverside and lake neighborhood. • People use the rivers and the lakes that are in the Terawas area to meet their needs of wáter and protein (fish) 	<ul style="list-style-type: none"> • HCV sign board installation. • HCV sign board treatment. • HCV patrol. • Mapping the location of HCV • External and internal environment of HCV socialization. • SOP Management and monitoring HCV (High Conservation Value) • Environmental Sustainability and Policy on Biological Diversity (Biodiversity) • Identify threats and sources of threats to the existence of HCV. • Vegetation analysis 	Estate Manager, RSPO Dept, Security, Public Relation (Pemitra)	2013, 2014, Continual
		Cangu Riverside	3.52 Ha				
		Tebat Riverside	1.17 Ha				
		Pelajau Riverside	0.69 Ha				
		Babat Riverside	0.60 Ha				
		Kemeneng Riverside	3.16 Ha				
		Suban Riverside	10.47 Ha				
		Kemang Riverside	3.04 Ha				
		Jauh Riverside	2.65 Ha				
		Sebrang Lakeside	1.91 Ha				
Sub Total 4.1			30.82 Ha				

RSPO

1.3 & 4.1	Paneban Riverside	8.40 Ha	<ul style="list-style-type: none"> • At Terawas area was found riparian ecosystems (Riverside and lake neighborhood). • At Terawas area was found Riverside and lake neighborhood. • People use the rivers and the lakes that are in the Terawas area to meet their needs of wáter and protein (fish) <p>At Terawas area also contained wildlife and plant spesies that are found directly that protected by the Government Regulation (PP) no. 7 year 1999 and included in CITES Appendix II :</p> <ul style="list-style-type: none"> • Paku tiang (<i>Cyathea latebrosa</i> (Wall.) Copel.) • Anggrek tebu (<i>Grammatophyl lum speciosum</i> Bl.) • <i>Ratufa bicolor</i> • <i>Presbytis melalophos</i> 	<ul style="list-style-type: none"> • HCV sign board installation. • HCV sign board treatment. • HCV patrol. • Mapping the location of HCV • External and internal environment of HCV socialization. • SOP Management and monitoring HCV (High Conservation Value) • Environmental Sustainability and Policy on Biological Diversity (Biodiversity) • Identify threats and sources of threats to the existence of HCV. • Vegetation analysis 	Estate Manager, RSPO Dept, Security, Public Relation (Pemitra)	2013, 2014, Continual
	Bongen Riverside	1.00 Ha				
	Mur Riverside	18.04 Ha				
	Benol Riverside	10.70 Ha				
	Gajah Riverside	4.06 Ha				
	Bakul Riverside	5.84 Ha				

RSPO

				<ul style="list-style-type: none"> • <i>Halcyon smyrnensis</i> • <i>Anthreptes malacensis</i> 			
		Sub Total 1.3 & 4.1	48.04 Ha				
Total HCV Area Terawas			78.86 Ha				

Description and Indication area of HCV PT. Evans Lestari (PT.EL)							
IPB Consultant				Description	Action Plan	PIC	Target
Area	HCV Type	Location	Broad (Ha)				
Beliti	4.1	Temuan Riverside	14.21 Ha	<ul style="list-style-type: none"> • At Beliti area was found riparian ecosystems (Riverside). • At Beliti area was found Riverside. • People use the rivers that are in the Beliti area to meet their needs of water and protein (fish) 	<ul style="list-style-type: none"> • HCV sign board installation. • HCV sign board treatment. • HCV patrol. • Mapping the location of HCV • External and internal environment of HCV socialization. • SOP Management and monitoring HCV (High Conservation Value) • Environmental Sustainability and Policy on Biological Diversity (Biodiversity) • Identify 	Estate Manager, RSPO Dept, Security, Public Relation (Pemitra)	2013, 2014, Continual
		Sukarame Riverside	5.81 Ha				
		Seniye Riverside	15.12 Ha				
		Tayu Riverside	29.20 Ha				
		Abang Riverside	3.18 Ha				
		Batang Riverside	5.81 Ha				
		Pose Riverside	5.65 Ha				
		Pring Riverside	7.16 Ha				
		Lesing Riverside	51.58 Ha				

RSPO

					threats and sources of threats to the existence of HCV.		
					<ul style="list-style-type: none"> Vegetation analysis 		
		Sub Total	137.72 Ha				
1.3 & 4.1	Napal Riverside	0.24 Ha	<ul style="list-style-type: none"> At Beliti area was found riparian ecosystems (Riverside). At Beliti area was found Riverside. People use the rivers that are in the Beliti area to meet their needs of water and protein (fish) <p>At Beliti area also contained wildlife and plant species that are found directly that protected by the Government Regulation (PP) no. 7 year 1999 and included in CITES Appendix II :</p> <ul style="list-style-type: none"> Paku tiang (<i>Cyathea latebrosa</i> (Wall.) Copel.) <i>Ratufa bicolor</i> <i>Presbytis melalophos</i> 	<ul style="list-style-type: none"> HCV sign board installation. HCV sign board treatment. HCV patrol. Mapping the location of HCV External and internal environment of HCV socialization. SOP Management and monitoring HCV (High Conservation Value) Environmental Sustainability and Policy on Biological Diversity (Biodiversity) Identify threats and sources of threats to the existence of HCV. Vegetation 	Estate Manager, RSPO Dept, Security, Public Relation (Pemitra)	2013, 2014, Continual	
	Petunang Riverside	23.97 Ha					
	Perigi Riverside	98.19 Ha					
	Kilan Riverside	141.41 Ha					

RSPO

			<ul style="list-style-type: none"> • <i>Halcyon smyrnensis</i> • <i>Anthreptes malacensis</i> 	analysis		
		Sub Total 1.3 & 4.1	263.81 Ha			
		Total HCV Area Beliti	401.53 Ha			
		Total HCV Area PT. Evans Lestari (Ha)	480.39			
		Total Permit Location Area PT. Evans Lestari (Ha)	20000			
		Total HCV Area (%)	2.40			

Stakeholders to be involved

Stakeholders Involved during Implementation.
- Agriculture and Forestry Department District of Musi Rawas.
- Department of Environment District of Musi Rawas.
- District and Village Administration Heads (Camat, Kepala Desa, BPD).
- Heads of local village norms and customs.
- Company employees.
- Contractors.

RSPO

Strengthening Communication and Social Relationships with Communities

- Companies to establish communication with key stakeholders, especially the parties that exist in Muara Beliti sub-district, Tuah Negeri sub-district, Selangit sub-district, Suku Lakitan Tengah sub-district, Tiang Pupung Kepungut sub-district and Ulu Terawas sub-district, to Eliminate barriers relations, without having carrying out to entry on the company's operations and improving the quality of field of partnership team (Pemitra) or public relations to build social relationships.
- To establish communication with the various ethnic and religious Terawas village, Babat village, Sri Mulyo village, Selangit village, Lubuk Ngin village and Lubuk Ngin Baru village, Paduraksa village and Suka merindu village, Remayu village, Petunang village, Bamasco village, Suro village, Muara Beliti Baru village, Simpang Gegas village and Rantau Bingin village to avoid the negative perception that companies pay more attention to one group than the other groups.

Land Acquisition Program

- Implementation of stakeholder consultation and outreach activities to communities and villages in Area plantation.
- Establish and implement SOP internal and External complaints.
- Establish and implement SOP land compensation

CSR in the Corporate Environment Program

- Implementation of CSR activities on a regular basis to the community around the company
- Establish and implement SOP Community Development
- Establish and implement SOP the provision of assistance.
- Acceptance of students for internships

Partnership Program in Community Economic Development around the company

- Develop and improve the partnership framework (community development) with emphasis on the needs and development of the community.

RSPO

HCV Management Plan

Plan for HCV Monitoring and Regular Review of Data

- Establish and implement SOP Management and monitoring HCV (High Conservation Value)
- Wildlife monitoring (3 times a year)
- HCV area monitoring (every month)

Management and mitigation plans for threats to HCV areas.

- Establish and implement SOP Management and monitoring HCV (High Conservation Value)
- Identify threats and sources of threats to the existence of HCV
- External and internal environment of HCV socialization
- Installation HCV sign board
- External and internal environment of HCV socialization
- Creating flow chart mechanisms that protected animals
- No spraying herbicides, pesticides in the catchment area
- Environmental Sustainability and Policy on Biological Diversity (Biodiversity)

Management plans to enhance or maintain conservation values of identified HCV areas

- Establish and implement SOP Management and monitoring HCV (High Conservation Value)
- Maintain of riparian
- Planting / greening

RSPO

Development Plan

The total area allocated in the Plantation Permit (Izin Usaha Perkebunan, IUP) is ± 20000 ha. No planting area will be carried out in HCV/Conservation area. The HCV management plan has been developed for these areas. The net area for cultivation of oil palm is ± 14000 ha. The balance areas left out of oil palm planting are ± 480.39 ha (2.40%) of Conservation area - HCV areas (indicative). 30 % of the land (or ± 6000 ha) will be allocated to development of smallholder cooperative scheme (Plasma). There no development has been carried out yet.

As part of the process of free, prior and informed consent (FPIC), the management will ensure that there is participation in the social and environmental harmony in the development of the oil palm planting project by PT Evans Lestari, mainly for development of Small holder cooperative scheme. Consultation with the relevant stakeholders is also to provide opportunities for communication and sharing the informations/opinion/suggestions between the PT Evans Lestari and the affected stakeholders to move forward for the benefit and common progress. PT Evans Lestari has established standard operating procedures for land acquisition and compensation procedures based on the principle of free, prior and informed consent. The company also has established the complaint and grievance procedures so that the problem solving process is carried out through discussion and mutual deliberation.

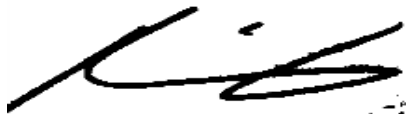
RSPO

VERIFICATION STATEMENT:

The company opted for a document audit. Control Union Certifications auditors conducted desk study, pre-assessment check, discussions with the management team including the RSPO Manager before the main document audit. During the main document audit, two Control Union auditors were present with the management team of PT Evans Lestari at their head office in Jakarta on 16th and 17th December 2013 to verify and review the relevant documents including interviewing the management team members.

PT Evans Lestari has adhered to the RSPO New Planting Procedures and has documented the assessments and plans according to the RSPO templates issued in May, 2010. The social and environmental assessments were detail, comprehensive and professionally carried out. The management plan has included the findings of the SEIA (AMDAL) conducted by the government approved consultants as well as incorporating the HCV and SIA assessments findings by consultants accredited and approved by the RSPO.

Control Union Certifications confirmed that the assessment and plans are comprehensive, professional and compliant of RSPO principles, criteria and indicators. It is the opinion of the Control Union Certifications auditors that PT Evans Lestari has complied with the RSPO New Planting Procedures enforced on 1st January, 2010.



Mohd Rizal Kassim
Lead Auditor
Date: 17th December 2013



Gunasekaran Uthiradam
Head of Operation Agronomy Sumatera
Signed on behalf of PT Evans Lestari
Date: 18th December 2013