

25<sup>th</sup> September 2023

**Public Notification :**

**RSPO Initial Certification Audit of PKS 10 PT Bima Agri Sawit, Dharma Satya Nusantara Group (DSNG) (RSPO Membership : 1-0135-12-000-00)**

Dear Stakeholders,

This is to inform that the above Management Unit Dharma Satya Nusantara Group (DSNG) with RSPO membership number : 1-0135-12-000-00 had appointed CB PT. TÜV Rheinland Indonesia. to conduct the [Initial Certification] Audit at PKS 10 PT Bima Agri Sawit and its supply base, located at Baay Estate, Muara Bulan Estate, and Kemitraan Permata Jaya (KR2). The audit will be conducted from November 20<sup>th</sup> - 24<sup>th</sup> 2023 against the requirements of Indonesian National Interpretation of the RSPO Principle & Criteria 2018 (INA-NI, Nov 2020).

RSPO Palmtrace ID number of the Mill is RSPO\_ PO1000000746

Brief explanation on the parent company's background can be refer to <https://rspo.org/members/all>.

The vision is to become a worldclass company that grow together with the society and being proud by the country. Meanwhile DSNG had a mission to create a sustainability growing in nature resource based industry which give an added value to all of the stakeholders through good governance. Company/ organization is operating in the farmer industry with speciality in plantation activities and palm oil processing.

Information of the production data to be assessed on the mill and estates are as follows :

1. Name of Mill

| Name of Palm Oil Mill | Capacity (Tonnes/Hour) | Location   | GPS Reference      |                     | Forecast Annual Output* (MT) |       |
|-----------------------|------------------------|--|--------------------|---------------------|------------------------------|-------|
|                       |                        |  | Latitude (N/S)     | Longitude (E/W)     | CPO                          | PK    |
| PKS 10 PT. BAS        | 40 MT/Jam              | Desa Baay, Kec. Karanganyar, Kab. Kutai Timur, Kal-Tim | 1° 15' 84,3809" LU | 117° 36' 0,8803" BT | 33,959                       | 6,438 |

2. Name of Supply Base / Estates / Including Scheme Smallholder

| Name Estates / Association | Location   | GPS Reference      |                      | Area Summary (Ha)*   |              | Forecasted Production (MT)* | NPP Processes** | RaCP Process**           |
|----------------------------|--|--------------------|----------------------|----------------------|--------------|-----------------------------|-----------------|--------------------------|
|                            |  | Latitude           | Longitude            | Total Certified Area | Planted Area |                             |                 |                          |
| Baay Estate                | Desa Baay, Kec. Karanganyar, Kab. Kutai Timur, Kal-Tim | 1° 16' 04,6639" LU | 117° 36' 02,5846" BT | 2,654                | 2,158        | 52,128                      | Approved NPP    | Approved CN, Progress CP |
| Muara Bulan Estate         | Desa Baay, Kec. Karanganyar, Kab. Kutai Timur, Kal-Tim | 1° 19' 56,7021" LU | 117° 36' 0,7882" BT  | 2,568                | 2,064        | 50,216                      | Approved NPP    | Approved CN, Progress    |

| Name Estates / Association | Location | GPS Reference |           | Area Summary (Ha)*   |              | Forecasted Production (MT)* | NPP Processes** | RaCP Process** |
|----------------------------|----------|---------------|-----------|----------------------|--------------|-----------------------------|-----------------|----------------|
|                            |          | Latitude      | Longitude | Total Certified Area | Planted Area |                             |                 |                |
|                            |          |               |           |                      |              |                             |                 | ess CP         |
| <b>Total</b>               |          |               |           | <b>5,222</b>         | <b>4,222</b> | <b>102,344</b>              |                 |                |

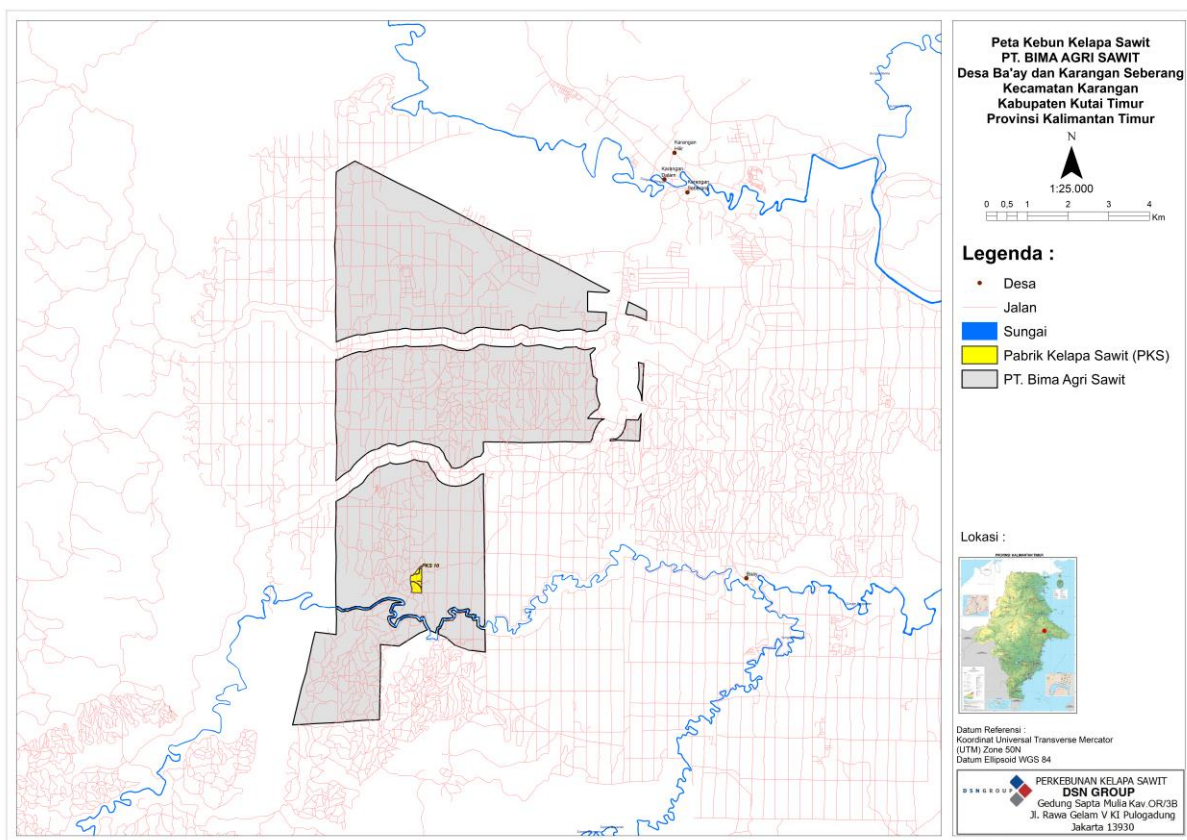
**Note :**

\*) period of year 2023

\*\*). Based on the year of planting and the history of land clearing activities

\*\*\*). Based on disclosure liability information and RaCP tracker on RSPO website

### 3. Map of Unit Management location



Picture1. Map of PT BAS

### 4. Proses NPP dan Status RaCP

The company is not currently carrying out the NPP and RaCP Process. NPP has been approved by RSPO on June 25<sup>th</sup> 2021.

RaCP for the company status, concept note has been approved by RSPO on July 20<sup>th</sup> 2023 and now for the compensation and remediation plan has been submitted since August 1<sup>st</sup> 2023

PT TUV Rheinland Indonesia is member of TÜV Rheinland Group, a global leader in independent testing and assessment services. Established in 1872, TÜV Rheinland Group has over 130 years of

experience in providing various types of certifications as well as technical services for over 360 locations in 62 countries worldwide.

The audit team for the audit consists of the following :

| Audite Team              | Role/Area of Requirement   | Qualification and Experience   |
|--------------------------|--|--|
| Efrida                   | Audit team leader – Legal compliance, SEIA & Plans, Human rights | <ul style="list-style-type: none"> <li>• She has attended some trainings such as i.e, RSPO Lead Auditor Training, ISO 9001:2008 Lead Auditor training (IRCA), ISPO Lead Auditor Training (ISPO Commission), 5S and Social Workshop, Kuala Lumpur, SA8000 auditor training, ISO 45001 Lead Auditor training (2021), SCCS Lead Auditor Training (2022), Refreshment RSPO by Checkmark (2021), and RSPO Independent Smallholder Standard Refreshment Training (2022).</li> <li>• She has work experience such as i.e, Community Development Staff at Wilmar International Plantation-Central Kalimantan Project (2010-2012) and Technical Support Department Sustainability Assurance in PT TUV Rheinland Indonesia (2012-2016), Auditor ISPO (2016-current) and Auditor RSPO (2016-current)</li> </ul>   |
| M Fundy Cholis Kurniawan | Auditor – Legal, Internal Control System requirement             | <ul style="list-style-type: none"> <li>• He has attended some trainings such as i.e, Environmental Impact Assessment (EIA), Ecological Risk Assessment (ERA), Internal Quality Audit Training for Quality Management System, IRQA-QMS ISO 9001:2000, IRQA-EMS 14001:2015, High Conservation Value (HCV), RSPO Lead Auditor Course, ISPO Auditor, RSPO-SCC Auditor, ISCC plantation audit, ISCC Auditor; LVV Auditor for ISO 14063; 14064, ISO SNI 37001, ISCC GHG Auditor, and Carbon Offsetting and Reduction Scheme for International Aviation (CORSA).</li> <li>• He has work experience such as i.e, Experienced in Environmental Impact Assessment (EIA Assessment), Environmental Health Safety Senior Officer (EHS-Senior Officer) in Wilmar International Plantation, Internal Auditor for Wilmar International Plantation, and Auditor for Roundtable on Sustainable Palm Oil (RSPO), Indonesian Sustainable Palm Oil (ISPO), International Sustainability Carbon Certification (ISCC) and ISCC GHG in PT TUV Rheinland Indonesia since June 2012 – July 2021; Corporate Sustainability.Dept. Head of Sinar Mas Land July – Dec 2021; Auditor in PT TUV Rheinland Indonesia since January 2022 – Present</li> </ul> |
| Bayu Yogatama            | Auditor - Environment, OHS, HCV, Best Practice and Legal         | <ul style="list-style-type: none"> <li>• He has attended some trainings such as i.e, Awareness SA8000 by Aljabar T7C; In House Training ISO 9001, 14001, 45001 Training RSPO SCCS by Checkmark; Training for Auditor Green Industry by Ministry of Industry;In House Training ISO 19011:2018; Training RSPO P&amp;C Lead Auditor by Checkmark; Refreshment ISPO new Standard Permentan 38 year 2020;In House Training In House</li> </ul>  |

| Audite Team | Role/Area of Requirement | Qualification and Experience  |
|-------------|--------------------------|---|
|             |                          | Training RSPO NPP 2015 & RaCP; IHT OHSAS 18000-2007; and as participant on research seminar for environment conservation scope. <ul style="list-style-type: none"> <li>• He has work experience such as i.e Auditor RSPO and ISPO; Wood product inspector; research assistant on university cooperation project for scope: bird habitat management and Combatting Illegal and Unsustainable Trade in Endangered Species in Indonesia</li> </ul> |

PT TUV Rheinland Indonesia invites stakeholders to provide comments (if any) on any following matters related to the site for Audit. Comments are only accepted within 30 days from the date of this letter and will be considered in the audit.

Comments that are requested to be treated confidential or to remain anonymous, please insert "CONFIDENTIAL" in the subject of your reply.

Commenters will need to include the details below in case we need to contact you for further clarification on any issues that were raised.

**Name** : Efrida  
**Position** : Lead Auditor  
**Email Address** : efrida@tuv.com  
**Phone Number** : +62 21 579 44 579

Comments must be sent to :

**PT TUV Rheinland Indonesia**  
**Efrida**  
**Lead Auditor**  
**Menara Karya 10th Floor**  
**Jl. H.R. Rasuna Said Block X-5 Kav 1-2**  
**Jakarta 12950**  
**Tel: +62 21 – 579 44 579**  
**Fax: +62 21 – 579 44 575**  
**Email : efrida@tuv.com**  
**Website: www.tuv.com**

**Auditee :**  
**PT Bima Agri Sawit (DSN Group)**  
Person in Charge : Watik TK  
Position : CMS Dept. Head  
Address : Gedung Sapta Mulia  
Jl. Rawa Gelam V Kav. OR/3B  
Kawasan Industri Pulogadung  
Jakarta 13930  
Indonesia  
Phone Number : +62 21 4618135  
Fax : +62 21 46834865  
Email : ms.agro@dsngroup.co.id

Best Regards,



**Dian S. Soeminta**  
General Manager of Sustainability Assurance  
PT TUV Rheinland Indonesia