

Tanggal : 30 Oktober 2023

**Notifikasi untuk Kegiatan Sertifikasi RSPO *Milestone-B* Perkumpulan Petani Sawit Mitra Mandiri Bersama (PPSMMB) (RSPO Membership1-0458-23-000-00, 4 October 2023)**

Stakeholder yang terhormat,

PT Mutuagung Lestari akan melakukan sertifikasi (*Milestone-B*) terhadap Perkumpulan Petani Sawit Mitra Mandiri Bersama (PPSMMB) yang berlokasi di Desa Seberu, Kecamatan Silat Hilir, Kabupaten Kapuas Hulu, Provinsi Kalimantan Barat, Indonesia untuk memenuhi terhadap Standar Pekebun Swadaya RSPO Interpretasi Nasional Indonesia untuk Produksi Minyak Sawit Lestari 2020, disahkan oleh Dewan Gubernur RSPO pada tanggal 14 Februari 2022.

Perkumpulan Petani Sawit Mitra Mandiri Bersama (PPSMMB) telah terdaftar di *PalmTrace IT platform* dengan *member ID* RSPO\_PO1000016233 dan akan menjalani proses sertifikasi RSPO untuk keseluruhan area produksi dibawah manajemennya dalam upaya pemenuhan standar RSPO. PT Mutuagung Lestari merencanakan untuk melakukan proses penilaian pada tanggal **04 s.d 09 Desember 2023**.

Nama Group Manager	Alamat Group Manager	Lokasi ISH Group	Referensi GPS	
			Garis Lintang	Garis Bujur
Suparto	Desa Seberu, Kecamatan Silat Hilir, Kabupaten Kapuas Hulu, Provinsi Kalimantan Barat, Indonesia	Desa Seberu, Kecamatan Silat Hilir, Kabupaten Kapuas Hulu, Provinsi Kalimantan Barat, Indonesia	10° 17' 25" LU	111° 55' 34" BT

Perkumpulan Petani Sawit Mandiri Mitra Bersama atau disingkat PPSMMB, adalah sebuah perkumpulan para petani sawit swadaya dari 6 kelompok tani dari Desa Sungai Sena, Desa Seberu di Kecamatan Silat Hilir dan Desa Pala Kota di Kecamatan Seberuang, Kabupaten Kapuas Hulu Provinsi Kalimantan Barat.

PPSMMB didirikan pada tahun 25 Agustus 2020 oleh para petani sawit mandiri dan didukung oleh 3 kepala desa dari Sungai Sena, Seberu dan Pala Kota. Pada 25 Novembe 2020 PPSMMB mendapatkan akta pendirian melalui Notaris Widiyansyah Nomor 32, terdaftar pada Kementerian Hukum dan HAM Republik Indonesia sebagai perkumpulan dengan nomor AHU-0004596.AH.01.07 Tahun 2021 dan Saat ini PPSMMB berkedudukan di Desa Seberu.

List Of Group Member Pekumpulan Petani Sawit Mitra Mandiri (PPSMMB)

No	Name of Farmer	Location	GPS Reference		Area Summary (Ha)		Forecasted Annual FFB Production (MT)	Any Liabilities? Yes/No	Date of Join on the Group
			Latitude	Longitude	Total Certified Area	Mature Area			
1	Adi Candra	Seberu Village, Silat Hilir Sub District, Kapuas Hulu District, Kalimantan Barat Province, Indonesia	111° 54' 37.058"E	0°16'46.893"N	0.6	0.597	2,157	No	25-Aug-20
2	Aep Sahpudin	Seberu Village, Silat Hilir Sub District, Kapuas Hulu District, Kalimantan Barat Province, Indonesia	111°49'12.487"E	0°18'17.331"N	1.216	1.214	26,454	No	25-Aug-20
3	Antonius Afendi	Seberu Village, Silat Hilir Sub District, Kapuas Hulu District, Kalimantan Barat Province, Indonesia	111°49'10.747"E	0°18'30.132"N	1.57	1.562	9,208	No	25-Aug-20
4	Aristo Asivin	Sungai Sena Village, Silat Hilir Sub District, Kapuas Hulu District, Kalimantan Barat Province, Indonesia	111°49'30.611"E	0°17'57.772"N	2.8275	2.814	10,839	No	25-Aug-20
5	Ariyanto Asim	Seberu Village, Silat Hilir Sub District, Kapuas Hulu District, Kalimantan Barat Province, Indonesia	111°49'0.279"E	0°18'33.32"N	0.23	0.210	745	No	25-Aug-20
6	Bernadus Roba	Pala Kota Village, Seberuang Sub District, Kapuas Hulu District, Kalimantan Barat Province, Indonesia	111°49'7.807"E	0°18'5.727"N	2.034	1.965	30,170	No	25-Aug-20
7	Bernalus Bitun	Seberu Village, Silat Hilir Sub District, Kapuas Hulu District, Kalimantan Barat Province, Indonesia	111°49'46.182"E	0°17'29.057"N	2.281	2.229	29,270	No	25-Aug-20
8	Betiya Gembau	Sungai Sena Village, Silat Hilir Sub District, Kapuas Hulu District, Kalimantan Barat Province, Indonesia	111°49'18.151"E	0°17'37.512"N	1.874	1.871	23,375	No	25-Aug-20
9	Evensius Mening	Seberu Village, Silat Hilir Sub District, Kapuas Hulu District, Kalimantan Barat Province, Indonesia	111°48'31.106"E	0°18'53.661"N	1.16	1.160	11,990	No	25-Aug-20
10	Juliana	Sungai Sena Village, Silat Hilir Sub District, Kapuas Hulu District, Kalimantan Barat Province, Indonesia	111°49'13.747"E	0°18'13.75"N	0.095	0.095	3,303	No	25-Aug-20
11	Lorensius Saleh 1	Sungai Sena Village, Silat Hilir Sub District, Kapuas Hulu District, Kalimantan Barat Province, Indonesia	111°49'11.995"E	0°17'50.341"N	0.32	0.312	1,085	No	25-Aug-20
12	Lorensius Saleh 2	Sungai Sena Village, Silat Hilir Sub District, Kapuas Hulu District, Kalimantan Barat Province, Indonesia	111°49'8.722"E	0°17'49.603"N	0.9	0.891	14,646	No	25-Aug-20
13	Markus Semartio 1	Seberu Village, Silat Hilir Sub District, Kapuas Hulu District, Kalimantan Barat Province, Indonesia	111°49'13.289"E	0°17'40.705"N	1.44	1.436	12,614	No	25-Aug-20
14	Ulrikus Esay	Seberu Village, Silat Hilir Sub District, Kapuas Hulu District, Kalimantan Barat Province, Indonesia	111°48'49.043"E	0°18'59.969"N	2.33	2.323	25,040	No	10-Sep-22
15	Niko Demus	Seberu Village, Silat Hilir Sub District, Kapuas Hulu District, Kalimantan Barat Province, Indonesia	111°49'11.286"E	0°18'37.278"N	0.9167	0.911	8,414	No	25-Aug-20
16	Nikolaus Adianto	Seberu Village, Silat Hilir Sub District, Kapuas Hulu District, Kalimantan Barat Province, Indonesia	111°48'43.229"E	0°18'48.467"N	1.8074	1.801	16,091	No	25-Aug-20
17	Paulus Pelaun	Seberu Village, Silat Hilir Sub District, Kapuas Hulu District, Kalimantan Barat Province, Indonesia	111°49'0.114"E	0°17'36.12"N	1.8828	1.873	28,138	No	25-Aug-20
18	Simon	Sungai Sena Village, Silat Hilir Sub District, Kapuas Hulu District, Kalimantan Barat Province, Indonesia	111°49'27.052"E	0°17'41.684"N	1.16	1.154	12,319	No	25-Aug-20
19	Yofinus Zainal	Sungai Sena Village, Silat Hilir Sub District, Kapuas Hulu District, Kalimantan Barat Province, Indonesia	111°49'0.433"E	0°17'28.884"N	1.2272	1.221	14,882	No	25-Aug-20
20	Yohanes Ahiong	Sungai Sena Village, Silat Hilir Sub District, Kapuas Hulu District, Kalimantan Barat Province, Indonesia	111°49'16.32"E	0°17'53.289"N	1.26	1.259	9,920	No	25-Aug-20
21	Yunus Jelapik	Seberu Village, Silat Hilir Sub District, Kapuas Hulu District, Kalimantan Barat Province, Indonesia	111°49'18.736"E	0°17'55.883"N	0.9	0.898	4,622	No	25-Aug-20
22	Yusuf Supardi	Seberu Village, Silat Hilir Sub District, Kapuas Hulu District, Kalimantan Barat Province, Indonesia	111°49'14.448"E	0°17'33.936"N	1.897	1.890	16,612	No	25-Aug-20
23	Agus	Sungai Sena Village, Silat Hilir Sub District, Kapuas Hulu District, Kalimantan Barat Province, Indonesia	111°51'54.208"E	0°17'57.057"N	2.6	2.596	7,806	No	25-Aug-20
24	Andrianus Anus	Seberu Village, Silat Hilir Sub District, Kapuas Hulu District, Kalimantan Barat Province, Indonesia	111°52'16.412"E	0°18'32.538"N	0.9479	0.943	8,751	No	25-Aug-20
25	Apolonius Heri	Seberu Village, Silat Hilir Sub District, Kapuas Hulu District, Kalimantan Barat Province, Indonesia	111°52'7.896"E	0°19'12.38"N	2	1.996	17,480	No	25-Aug-20
26	Apolonius Lias	Seberu Village, Silat Hilir Sub District, Kapuas Hulu District, Kalimantan Barat Province, Indonesia	111°52'7.896"E	0°19'12.38"N	1.587	1.572	5,765	No	25-Aug-20
27	Eni Sulawati	Pala Kota Village, Seberuang Sub District, Kapuas Hulu District, Kalimantan Barat Province, Indonesia	111°52'4.95"E	0°18'8.347"N	2	1.992	6,389	No	10-Sep-22
28	Gito 1	Sungai Sena Village, Silat Hilir Sub District, Kapuas Hulu District, Kalimantan Barat Province, Indonesia	111°51'46.421"E	0°18'45.454"N	2.873	2.857	4,461	No	10-Sep-22
29	Gito 2	Pala Kota Village, Seberuang Sub District, Kapuas Hulu District, Kalimantan Barat Province, Indonesia	111°51'48.53"E	0°18'47.979"N	2.36	2.333	4,951	No	10-Sep-22
30	Hendrikus Paulus 1	Seberu Village, Silat Hilir Sub District, Kapuas Hulu District, Kalimantan Barat Province, Indonesia	111°51'52.57"E	0°18'42.736"N	2.226	2.213	14,641	No	25-Aug-20
31	Hendrikus Paulus 2	Seberu Village, Silat Hilir Sub District, Kapuas Hulu District, Kalimantan Barat Province, Indonesia	111°51'58.213"E	0°18'48.476"N	1.7807	1.774	9,954	No	25-Aug-20
32	Herikus Horoi	Seberu Village, Silat Hilir Sub District, Kapuas Hulu District, Kalimantan Barat Province, Indonesia	111°51'31.303"E	0°18'5.199"N	1.809	1.770	3,794	No	10-Sep-22
33	Junaidi	Pala Kota Village, Seberuang Sub District, Kapuas Hulu District, Kalimantan Barat Province, Indonesia	111°51'50.806"E	0°19'1.504"N	2.485	2.436	15,401	No	10-Sep-22
34	K. Dacardi	Pala Kota Village, Seberuang Sub District, Kapuas Hulu District, Kalimantan Barat Province, Indonesia	111°50'56.994"E	0°17'20.173"N	3.4087	3.404	38,762	No	25-Aug-20
35	Lorensius Jangkin	Pala Kota Village, Seberuang Sub District, Kapuas Hulu District, Kalimantan Barat Province, Indonesia	111°51'56.4"E	0°19'9.495"N	3.153	3.115	13,949	No	25-Aug-20
36	Martinus Imin	Pala Kota Village, Seberuang Sub District, Kapuas Hulu District, Kalimantan Barat Province, Indonesia	111°51'41.21"E	0°18'56.998"N	4.231	4.212	15,986	No	25-Aug-20

37	Matus Buai	Sungai Sena Village, Silat Hilir Sub District, Kapuas Hulu District, Kalimantan Barat Province, Indonesia	111°51'41.21"E	0°18'56.998"N	1.646	1.638	17,393	No	25-Aug-20
38	Matus Buai	Pala Kola Village, Seberuang Sub District, Kapuas Hulu District, Kalimantan Barat Province, Indonesia	111°51'50.992"E	0°18'36.362"N	1.4227	1.421	6,176	No	25-Aug-20
39	Matus Cakung 1	Sungai Sena Village, Silat Hilir Sub District, Kapuas Hulu District, Kalimantan Barat Province, Indonesia	111°51'53.063"E	0°19'12.075"N	2	1.992	15,530	No	25-Aug-20
40	Matus Cakung 2	Sungai Sena Village, Silat Hilir Sub District, Kapuas Hulu District, Kalimantan Barat Province, Indonesia	111°51'53.404"E	0°19'17.15"N	1	0.997	9,726	No	25-Aug-20
41	Petrus 1	Sungai Sena Village, Silat Hilir Sub District, Kapuas Hulu District, Kalimantan Barat Province, Indonesia	111°52'34.232"E	0°19'6.923"N	2.37	2.367	12,822	No	25-Aug-20
42	Petrus 2	Sungai Sena Village, Silat Hilir Sub District, Kapuas Hulu District, Kalimantan Barat Province, Indonesia	111°51'38.571"E	0°18'45.563"N	2	1.998	11,075	No	25-Aug-20
43	Pronika Unuk 1	Sungai Sena Village, Silat Hilir Sub District, Kapuas Hulu District, Kalimantan Barat Province, Indonesia	111°51'39.815"E	0°18'28.462"N	0.7432	0.741	8,334	No	25-Aug-20
44	Pronika Unuk 2	Sungai Sena Village, Silat Hilir Sub District, Kapuas Hulu District, Kalimantan Barat Province, Indonesia	111°51'33.864"E	0°18'28.895"N	0.77	0.741	8,034	No	25-Aug-20
45	Sendai	Sungai Sena Village, Silat Hilir Sub District, Kapuas Hulu District, Kalimantan Barat Province, Indonesia	111°51'49.208"E	0°17'52.253"N	2.8247	2.817	9,103	No	25-Aug-20
46	Siprianus Sampai	Sungai Sena Village, Silat Hilir Sub District, Kapuas Hulu District, Kalimantan Barat Province, Indonesia	111°51'53.542"E	0°18'32.788"N	3.5	3.480	36,588	No	25-Aug-20
47	Timotius Asman	Sungai Sena Village, Silat Hilir Sub District, Kapuas Hulu District, Kalimantan Barat Province, Indonesia	111°51'21.625"E	0°17'22.232"N	2.417	2.408	25,587	No	25-Aug-20
48	Vincensius Mustapa Yadi 1	Sungai Sena Village, Silat Hilir Sub District, Kapuas Hulu District, Kalimantan Barat Province, Indonesia	111°52'10.277"E	0°19'19.503"N	2	1.994	13,021	No	25-Aug-20
49	Vincensius Mustapa Yadi 2	Sungai Sena Village, Silat Hilir Sub District, Kapuas Hulu District, Kalimantan Barat Province, Indonesia	111°52'13.234"E	0°19'17.776"N	2	1.998	10,285	No	25-Aug-20
50	Yohanes Jabar	Sungai Sena Village, Silat Hilir Sub District, Kapuas Hulu District, Kalimantan Barat Province, Indonesia	111°50'37.019"E	0°18'36.808"N	2.17	2.137	38,414	No	25-Aug-20
51	Yudi Hartono 1	Sungai Sena Village, Silat Hilir Sub District, Kapuas Hulu District, Kalimantan Barat Province, Indonesia	111°52'5.557"E	0°18'32.454"N	1.9	1.890	27,020	No	25-Aug-20
52	Yudi Hartono 2	Pala Kola Village, Seberuang Sub District, Kapuas Hulu District, Kalimantan Barat Province, Indonesia	111°51'58.921"E	0°18'34.033"N	2.396	2.388	12,630	No	25-Aug-20
53	Yusuf Saputra	Sungai Sena Village, Silat Hilir Sub District, Kapuas Hulu District, Kalimantan Barat Province, Indonesia	111°50'24.843"E	0°17'23.14"N	0.9006	0.898	6,355	No	25-Aug-20
54	Agus Wahyanto	Pala Kola Village, Seberuang Sub District, Kapuas Hulu District, Kalimantan Barat Province, Indonesia	111°50'44.48"E	0°20'1.246"N	1.232	1.199	5,837	No	25-Aug-20
55	Ahmad Mudzakir 1	Sungai Sena Village, Silat Hilir Sub District, Kapuas Hulu District, Kalimantan Barat Province, Indonesia	111°51'21.019"E	0°20'28.143"N	0.2805	0.278	2,094	No	25-Aug-20
56	Ahmad Mudzakir 2	Pala Kola Village, Seberuang Sub District, Kapuas Hulu District, Kalimantan Barat Province, Indonesia	111°51'27.227"E	0°20'30.71"N	0.2675	0.264	2,200	No	25-Aug-20
57	Ahmad Mudzakir 3	Sungai Sena Village, Silat Hilir Sub District, Kapuas Hulu District, Kalimantan Barat Province, Indonesia	111°51'28.334"E	0°20'29.549"N	0.2075	0.205	2,060	No	25-Aug-20
58	Ali Lapar	Sungai Sena Village, Silat Hilir Sub District, Kapuas Hulu District, Kalimantan Barat Province, Indonesia	111°51'44.052"E	0°20'30.274"N	0.25	0.246	2,706	No	25-Aug-20
59	Arfianto	Sungai Sena Village, Silat Hilir Sub District, Kapuas Hulu District, Kalimantan Barat Province, Indonesia	111°51'29.707"E	0°20'16.689"N	0.2681	0.228	2,390	No	25-Aug-20
60	Arif Purnomo	Sungai Sena Village, Silat Hilir Sub District, Kapuas Hulu District, Kalimantan Barat Province, Indonesia	111°51'23.374"E	0°20'18.191"N	0.25	0.247	6,150	No	25-Aug-20
61	Arif Suprianto	Pala Kola Village, Seberuang Sub District, Kapuas Hulu District, Kalimantan Barat Province, Indonesia	111°50'25.738"E	0°20'6.895"N	0.3745	0.373	2,230	No	25-Aug-20
62	Dengak (Stalius)	Seberu Village, Silat Hilir Sub District, Kapuas Hulu District, Kalimantan Barat Province, Indonesia	111°51'42.601"E	0°20'59.76"N	0.7885	0.785	7,446	No	25-Aug-20
63	Edi Sudrajat 1	Sungai Sena Village, Silat Hilir Sub District, Kapuas Hulu District, Kalimantan Barat Province, Indonesia	111°51'21.159"E	0°20'22.485"N	0.2777	0.275	1,970	No	25-Aug-20
64	Edi Sudrajat 2	Sungai Sena Village, Silat Hilir Sub District, Kapuas Hulu District, Kalimantan Barat Province, Indonesia	111°52'32.428"E	0°20'12.129"N	1.84	1.835	3,230	No	25-Aug-20
65	Fajar Yunianto	Seberu Village, Silat Hilir Sub District, Kapuas Hulu District, Kalimantan Barat Province, Indonesia	111°52'28.836"E	0°21'10.981"N	0.91	0.905	6,802	No	25-Aug-20
66	Haryani	Seberu Village, Silat Hilir Sub District, Kapuas Hulu District, Kalimantan Barat Province, Indonesia	111°51'22.25"E	0°20'26.642"N	0.2617	0.260	3,259	No	25-Aug-20
67	Irawan	Sungai Sena Village, Silat Hilir Sub District, Kapuas Hulu District, Kalimantan Barat Province, Indonesia	111°50'38.321"E	0°21'49.65"N	2.9552	2.937	11,572	No	25-Aug-20
68	Irawan Suprianto	Sungai Sena Village, Silat Hilir Sub District, Kapuas Hulu District, Kalimantan Barat Province, Indonesia	111°51'31.346"E	0°20'31.14"N	0.25	0.246	1,835	No	25-Aug-20
69	Kadar	Pala Kola Village, Seberuang Sub District, Kapuas Hulu District, Kalimantan Barat Province, Indonesia	111°51'47.924"E	0°21'0.775"N	1.1842	1.179	11,250	No	25-Aug-20
70	Kasino	Pala Kola Village, Seberuang Sub District, Kapuas Hulu District, Kalimantan Barat Province, Indonesia	111°51'39.95"E	0°20'29.505"N	0.141	0.139	2,364	No	25-Aug-20
71	Kusno	Pala Kola Village, Seberuang Sub District, Kapuas Hulu District, Kalimantan Barat Province, Indonesia	111°51'30.438"E	0°20'32.408"N	0.25	0.247	3,852	No	25-Aug-20
72	Mahful Saifudin	Pala Kola Village, Seberuang Sub District, Kapuas Hulu District, Kalimantan Barat Province, Indonesia	111°51'36.156"E	0°20'29.946"N	0.3	0.296	1,600	No	25-Aug-20
73	Mangasi Samosir 1	Sungai Sena Village, Silat Hilir Sub District, Kapuas Hulu District, Kalimantan Barat Province, Indonesia	111°51'20.917"E	0°21'20.885"N	3.1708	3.158	26,176	No	25-Aug-20
74	Mangasi Samosir 2	Pala Kola Village, Seberuang Sub District, Kapuas Hulu District, Kalimantan Barat Province, Indonesia	111°50'57.452"E	0°19'58.056"N	0.7165	0.713	12,006	No	25-Aug-20
75	Mangasi Samosir 3	Sungai Sena Village, Silat Hilir Sub District, Kapuas Hulu District, Kalimantan Barat Province, Indonesia	111°50'46.235"E	0°21'39.633"N	0.3755	0.371	2,742	No	25-Aug-20
76	Mangasi Samosir 4	Sungai Sena Village, Silat Hilir Sub District, Kapuas Hulu District, Kalimantan Barat Province, Indonesia	111°50'44.873"E	0°22'32.892"N	1.75	1.746	7,065	No	25-Aug-20

77	Mangasi Samosir 5	Sungai Sena Village, Silat Hilir Sub District, Kapuas Hulu District, Kalimantan Barat Province, Indonesia	111°51'21.683"E	0°21'43.824"N	2.1	2.082	11,277	No	25-Aug-20
78	Mangasi Samosir 6	Sungai Sena Village, Silat Hilir Sub District, Kapuas Hulu District, Kalimantan Barat Province, Indonesia	111°51'22.801"E	0°20'30.872"N	0.25	0.248	4,133	No	25-Aug-20
79	Mangasi Samosir 7	Sungai Sena Village, Silat Hilir Sub District, Kapuas Hulu District, Kalimantan Barat Province, Indonesia	111°51'42.195"E	0°20'31.339"N	0.34	0.337	2,196	No	25-Aug-20
80	Marsidin 1	Sungai Sena Village, Silat Hilir Sub District, Kapuas Hulu District, Kalimantan Barat Province, Indonesia	111°51'20.891"E	0°20'43.998"N	0.5063	0.503	4,430	No	25-Aug-20
81	Marsidin 2	Seberu Village, Silat Hilir Sub District, Kapuas Hulu District, Kalimantan Barat Province, Indonesia	111°50'28.129"E	0°20'4.73"N	0.3579	0.355	1,470	No	25-Aug-20
82	Masrin	Seberu Village, Silat Hilir Sub District, Kapuas Hulu District, Kalimantan Barat Province, Indonesia	111°51'24.979"E	0°20'29.023"N	0.27	0.251	1,230	No	25-Aug-20
83	Miftahudin	Seberu Village, Silat Hilir Sub District, Kapuas Hulu District, Kalimantan Barat Province, Indonesia	111°51'21.499"E	0°20'21.5"N	0.25	0.246	1,810	No	25-Aug-20
84	Ngasriono	Seberu Village, Silat Hilir Sub District, Kapuas Hulu District, Kalimantan Barat Province, Indonesia	111°51'28.855"E	0°20'28.943"N	0.25	0.246	2,378	No	25-Aug-20
85	Rasdi	Sungai Sena Village, Silat Hilir Sub District, Kapuas Hulu District, Kalimantan Barat Province, Indonesia	111°51'29.918"E	0°20'33.186"N	0.25	0.247	1,304	No	25-Aug-20
86	Rifky Widodo	Sungai Sena Village, Silat Hilir Sub District, Kapuas Hulu District, Kalimantan Barat Province, Indonesia	111°51'19.966"E	0°20'22.847"N	0.25	0.247	1,895	No	25-Aug-20
87	Rohim Sutomo 1	Pala Kola Village, Seberuang Sub District, Kapuas Hulu District, Kalimantan Barat Province, Indonesia	111°52'27.644"E	0°20'7.978"N	1.8648	1.856	31,980	No	25-Aug-20
88	Rohim Sutomo 2	Pala Kola Village, Seberuang Sub District, Kapuas Hulu District, Kalimantan Barat Province, Indonesia	111°52'26.074"E	0°20'10.278"N	1.46	1.457	22,468	No	25-Aug-20
89	Slamet	Pala Kola Village, Seberuang Sub District, Kapuas Hulu District, Kalimantan Barat Province, Indonesia	111°53'33.418"E	0°20'12.408"N	1.1	1.087	4,725	No	25-Aug-20
90	Sumarno 1	Sungai Sena Village, Silat Hilir Sub District, Kapuas Hulu District, Kalimantan Barat Province, Indonesia	111°51'5.517"E	0°20'12.404"N	1.006	0.994	25,355	No	25-Aug-20
91	Sumarno 2	Sungai Sena Village, Silat Hilir Sub District, Kapuas Hulu District, Kalimantan Barat Province, Indonesia	111°52'28.224"E	0°20'14.454"N	2.02	2.013	39,757	No	25-Aug-20
92	Sumarno 3	Sungai Sena Village, Silat Hilir Sub District, Kapuas Hulu District, Kalimantan Barat Province, Indonesia	111°51'46.418"E	0°21'3.673"N	2.3035	2.285	44,987	No	25-Aug-20
93	Pendi	Pala Kola Village, Seberuang Sub District, Kapuas Hulu District, Kalimantan Barat Province, Indonesia	111°52'25.362"E	0°20'12.991"N	0.6	0.597	2,933	No	10-Sep-22
94	Sunang	Pala Kola Village, Seberuang Sub District, Kapuas Hulu District, Kalimantan Barat Province, Indonesia	111°50'48.279"E	0°21'33.372"N	2.7849	2.768	13,093	No	25-Aug-20
95	Suparmanto	Pala Kola Village, Seberuang Sub District, Kapuas Hulu District, Kalimantan Barat Province, Indonesia	111°50'32.641"E	0°20'43.556"N	0.9	0.897	13,670	No	25-Aug-20
96	Suratman	Seberu Village, Silat Hilir Sub District, Kapuas Hulu District, Kalimantan Barat Province, Indonesia	111°51'47.138"E	0°21'33.125"N	1.26	1.242	6,582	No	25-Aug-20
97	Suwitno	Sungai Sena Village, Silat Hilir Sub District, Kapuas Hulu District, Kalimantan Barat Province, Indonesia	111°51'4.373"E	0°20'30.462"N	0.0811	0.078	1,952	No	25-Aug-20
98	Tri Riyanto	Seberu Village, Silat Hilir Sub District, Kapuas Hulu District, Kalimantan Barat Province, Indonesia	111°51'26.331"E	0°20'26.904"N	0.27	0.266	984	No	25-Aug-20
99	Tri Susanto	Seberu Village, Silat Hilir Sub District, Kapuas Hulu District, Kalimantan Barat Province, Indonesia	111°53'7.576"E	0°20'8.315"N	0.7969	0.791	3,274	No	25-Aug-20
100	Zainudin	Sungai Sena Village, Silat Hilir Sub District, Kapuas Hulu District, Kalimantan Barat Province, Indonesia	111°51'26.784"E	0°20'18.575"N	0.2695	0.267	2,025	No	25-Aug-20
101	Akhmad Ali Santoso	Sungai Sena Village, Silat Hilir Sub District, Kapuas Hulu District, Kalimantan Barat Province, Indonesia	111°52'6.016"E	0°20'22.097"N	1.2147	1.198	14,476	No	25-Aug-20
102	Budiman Situmorang	Seberu Village, Silat Hilir Sub District, Kapuas Hulu District, Kalimantan Barat Province, Indonesia	111°50'7.691"E	0°20'44.302"N	2.05	2.033	41,020	No	25-Aug-20
103	Cahyono	Sungai Sena Village, Silat Hilir Sub District, Kapuas Hulu District, Kalimantan Barat Province, Indonesia	111°51'24.291"E	0°22'19.902"N	1.288	1.284	13,445	No	25-Aug-20
104	Darno 1	Sungai Sena Village, Silat Hilir Sub District, Kapuas Hulu District, Kalimantan Barat Province, Indonesia	111°52'8.411"E	0°20'18.019"N	0.75	0.748	4,287	No	25-Aug-20
105	Darno 2	Seberu Village, Silat Hilir Sub District, Kapuas Hulu District, Kalimantan Barat Province, Indonesia	111°52'10.264"E	0°20'18.678"N	0.45	0.444	3,587	No	25-Aug-20
106	Dominikus 1	Sungai Sena Village, Silat Hilir Sub District, Kapuas Hulu District, Kalimantan Barat Province, Indonesia	111°49'59.629"E	0°20'40.032"N	0.2	0.197	924	No	25-Aug-20
107	Dominikus 2	Sungai Sena Village, Silat Hilir Sub District, Kapuas Hulu District, Kalimantan Barat Province, Indonesia	111°50'15.554"E	0°20'7.997"N	0.5	0.493	4,106	No	25-Aug-20
108	Fatkurmat 1	Sungai Sena Village, Silat Hilir Sub District, Kapuas Hulu District, Kalimantan Barat Province, Indonesia	111°51'35.703"E	0°20'6.834"N	0.25	0.248	4,740	No	25-Aug-20
109	Fatkurmat 2	Sungai Sena Village, Silat Hilir Sub District, Kapuas Hulu District, Kalimantan Barat Province, Indonesia	111°51'36.487"E	0°20'7.364"N	0.2604	0.252	4,334	No	25-Aug-20
110	Fatkurmat 3	Sungai Sena Village, Silat Hilir Sub District, Kapuas Hulu District, Kalimantan Barat Province, Indonesia	111°51'36.487"E	0°20'7.364"N	0.5237	0.518	8,355	No	25-Aug-20
111	Fatkurmat 4	Sungai Sena Village, Silat Hilir Sub District, Kapuas Hulu District, Kalimantan Barat Province, Indonesia	111°51'34.916"E	0°20'9.176"N	0.25	0.247	8,607	No	25-Aug-20
112	Kasman	Sungai Sena Village, Silat Hilir Sub District, Kapuas Hulu District, Kalimantan Barat Province, Indonesia	111°52'30.022"E	0°19'36.875"N	1	0.998	11,843	No	25-Aug-20
113	Lasio	Pala Kola Village, Seberuang Sub District, Kapuas Hulu District, Kalimantan Barat Province, Indonesia	111°51'52.907"E	0°20'24.433"N	0.5	0.499	7,761	No	25-Aug-20
114	Latin	Sungai Sena Village, Silat Hilir Sub District, Kapuas Hulu District, Kalimantan Barat Province, Indonesia	111°50'22.606"E	0°20'2.848"N	2.08	2.032	21,005	No	25-Aug-20
115	Nanang Transetya 1	Sungai Sena Village, Silat Hilir Sub District, Kapuas Hulu District, Kalimantan Barat Province, Indonesia	111°53'34.848"E	0°22'8.391"N	2.7	2.692	29,952	No	25-Aug-20
116	Nanang Transetya 2	Seberu Village, Silat Hilir Sub District, Kapuas Hulu District, Kalimantan Barat Province, Indonesia	111°50'22.281"E	0°17'16.853"N	2	1.996	19,032	No	25-Aug-20

117	Purwanto	Sungai Sena Village, Silat Hilir Sub District, Kapuas Hulu District, Kalimantan Barat Province, Indonesia	111°52'54.344"E	0°21'11.413"N	1.014	0.997	8,890	No	10-Sep-22
118	Rasto	Sungai Sena Village, Silat Hilir Sub District, Kapuas Hulu District, Kalimantan Barat Province, Indonesia	111°51'14.437"E	0°22'11.418"N	5.4	5.391	33,790	No	25-Aug-20
119	Solihin 1	Pala Kola Village, Seberuang Sub District, Kapuas Hulu District, Kalimantan Barat Province, Indonesia	111°51'44.127"E	0°20'14.307"N	0.25	0.243	4,007	No	25-Aug-20
120	Solihin 2	Pala Kola Village, Seberuang Sub District, Kapuas Hulu District, Kalimantan Barat Province, Indonesia	111°51'44.12"E	0°20'16.673"N	0.25	0.247	4,123	No	25-Aug-20
121	Solihin 3	Seberu Village, Silat Hilir Sub District, Kapuas Hulu District, Kalimantan Barat Province, Indonesia	111°51'47.372"E	0°20'16.03"N	0.265	0.264	3,275	No	25-Aug-20
122	Sugito	Seberu Village, Silat Hilir Sub District, Kapuas Hulu District, Kalimantan Barat Province, Indonesia	111°51'50.505"E	0°20'28.565"N	0.2065	0.204	2,155	No	25-Aug-20
123	Suharto	Sungai Sena Village, Silat Hilir Sub District, Kapuas Hulu District, Kalimantan Barat Province, Indonesia	111°51'32.629"E	0°20'29.958"N	0.6819	0.673	2,873	No	25-Aug-20
124	Tri Pelu Utomo 1	Sungai Sena Village, Silat Hilir Sub District, Kapuas Hulu District, Kalimantan Barat Province, Indonesia	111°52'8.903"E	0°21'8.697"N	0.2565	2.557	20,514	No	25-Aug-20
125	Tri Pelu Utomo 2	Sungai Sena Village, Silat Hilir Sub District, Kapuas Hulu District, Kalimantan Barat Province, Indonesia	111°51'16.151"E	0°20'39.35"N	0.2728	0.266	3,194	No	25-Aug-20
126	Usman	Seberu Village, Silat Hilir Sub District, Kapuas Hulu District, Kalimantan Barat Province, Indonesia	111°52'27.086"E	0°19'37.366"N	1.5	1.496	11,070	No	25-Aug-20
127	Agus Priyanto	Seberu Village, Silat Hilir Sub District, Kapuas Hulu District, Kalimantan Barat Province, Indonesia	111°51'5.762"E	0°20'30.721"N	0.27	0.270	4,610	No	10-Sep-22
128	Asi Dadal 1	Seberu Village, Silat Hilir Sub District, Kapuas Hulu District, Kalimantan Barat Province, Indonesia	111°50'28.04"E	0°21'28.25"N	2.9591	2.910	37,027	No	25-Aug-20
129	Asi Dadal 2	Seberu Village, Silat Hilir Sub District, Kapuas Hulu District, Kalimantan Barat Province, Indonesia	111°50'41.77"E	0°21'42.08"N	1.2892	1.247	5,040	No	25-Aug-20
130	Darsono	Seberu Village, Silat Hilir Sub District, Kapuas Hulu District, Kalimantan Barat Province, Indonesia	111°51'18.307"E	0°22'20.066"N	2.408	2.395	24,350	No	25-Aug-20
131	Ibil 1	Seberu Village, Silat Hilir Sub District, Kapuas Hulu District, Kalimantan Barat Province, Indonesia	111°50'26.106"E	0°20'49.217"N	1.6858	1.681	21,390	No	25-Aug-20
132	Ibil 2	Seberu Village, Silat Hilir Sub District, Kapuas Hulu District, Kalimantan Barat Province, Indonesia	111°50'47.292"E	0°21'3.899"N	0.4929	0.490	8,215	No	25-Aug-20
133	Juwari	Seberu Village, Silat Hilir Sub District, Kapuas Hulu District, Kalimantan Barat Province, Indonesia	111°51'10.436"E	0°20'34.944"N	1.017	1.013	9,132	No	25-Aug-20
134	Kusnadi	Sungai Sena Village, Silat Hilir Sub District, Kapuas Hulu District, Kalimantan Barat Province, Indonesia	111°50'28.557"E	0°20'51.654"N	1.1	1.056	3,764	No	25-Aug-20
135	Nurinto	Sungai Sena Village, Silat Hilir Sub District, Kapuas Hulu District, Kalimantan Barat Province, Indonesia	111°50'29.303"E	0°20'49.903"N	0.5	0.498	2,595	No	25-Aug-20
136	Rahman	Sungai Sena Village, Silat Hilir Sub District, Kapuas Hulu District, Kalimantan Barat Province, Indonesia	111°51'19.1"E	0°21'37.203"N	1.1	1.057	9,650	No	10-Sep-22
137	Rudiono	Sungai Sena Village, Silat Hilir Sub District, Kapuas Hulu District, Kalimantan Barat Province, Indonesia	111°51'13.07"E	0°20'54.463"N	0.2	0.165	3,560	No	25-Aug-20
138	Selamet	Sungai Sena Village, Silat Hilir Sub District, Kapuas Hulu District, Kalimantan Barat Province, Indonesia	111°50'34.03"E	0°20'49.374"N	2.6724	2.679	16,912	No	25-Aug-20
139	Seselius 2	Sungai Sena Village, Silat Hilir Sub District, Kapuas Hulu District, Kalimantan Barat Province, Indonesia	111°50'35.856"E	0°20'43.921"N	2.1617	2.154	7,461	No	25-Aug-20
140	Seselius 3	Sungai Sena Village, Silat Hilir Sub District, Kapuas Hulu District, Kalimantan Barat Province, Indonesia	111°51'25.669"E	0°20'33.236"N	0.265	0.260	3,755	No	25-Aug-20
141	Solihin	Sungai Sena Village, Silat Hilir Sub District, Kapuas Hulu District, Kalimantan Barat Province, Indonesia	111°50'31.869"E	0°21'21.924"N	2.931	2.882	14,812	No	25-Aug-20
142	Suhadi	Pala Kola Village, Seberuang Sub District, Kapuas Hulu District, Kalimantan Barat Province, Indonesia	111°50'56.396"E	0°21'42.168"N	1.867	1.855	17,687	No	25-Aug-20
143	Suhermanto	Pala Kola Village, Seberuang Sub District, Kapuas Hulu District, Kalimantan Barat Province, Indonesia	111°51'22.062"E	0°22'23.002"N	1.523	1.518	16,786	No	25-Aug-20
144	Sunoto	Pala Kola Village, Seberuang Sub District, Kapuas Hulu District, Kalimantan Barat Province, Indonesia	111°51'13.971"E	0°20'48.802"N	0.25	0.248	4,994	No	25-Aug-20
145	Suwardi	Pala Kola Village, Seberuang Sub District, Kapuas Hulu District, Kalimantan Barat Province, Indonesia	111°52'34.971"E	0°20'12.319"N	2.11	2.106	7,463	No	25-Aug-20
146	Tarsono	Seberu Village, Silat Hilir Sub District, Kapuas Hulu District, Kalimantan Barat Province, Indonesia	111°51'21.886"E	0°20'43.211"N	0.25	0.248	2,648	No	25-Aug-20
147	Tasbi	Pala Kola Village, Seberuang Sub District, Kapuas Hulu District, Kalimantan Barat Province, Indonesia	111°51'10.572"E	0°20'52.477"N	0.25	0.247	11,517	No	25-Aug-20
148	Tawid	Pala Kola Village, Seberuang Sub District, Kapuas Hulu District, Kalimantan Barat Province, Indonesia	111°51'10.832"E	0°20'23.974"N	0.25	0.243	855	No	25-Aug-20
149	Usman Hutapea	Sungai Sena Village, Silat Hilir Sub District, Kapuas Hulu District, Kalimantan Barat Province, Indonesia	111°50'38.018"E	0°21'37.567"N	2.5137	2.509	26,914	No	25-Aug-20
150	Wahyuri	Sungai Sena Village, Silat Hilir Sub District, Kapuas Hulu District, Kalimantan Barat Province, Indonesia	111°50'31.367"E	0°20'35.494"N	2.25	2.246	12,017	No	25-Aug-20
151	Wandoyo	Sungai Sena Village, Silat Hilir Sub District, Kapuas Hulu District, Kalimantan Barat Province, Indonesia	111°51'19.466"E	0°21'42.874"N	1.8	1.776	11,380	No	25-Aug-20
152	Adrianus Maraca	Pala Kola Village, Seberuang Sub District, Kapuas Hulu District, Kalimantan Barat Province, Indonesia	111°58'31.471"E	0°16'9.352"N	0.3	0.298	7,966	No	25-Aug-20
153	Agelius Endi	Pala Kola Village, Seberuang Sub District, Kapuas Hulu District, Kalimantan Barat Province, Indonesia	111°58'28.892"E	0°16'9.355"N	0.7	0.698	11,804	No	25-Aug-20
154	Aleksander Mian	Seberu Village, Silat Hilir Sub District, Kapuas Hulu District, Kalimantan Barat Province, Indonesia	111°58'20.782"E	0°16'2.187"N	0.5	0.497	4,264	No	25-Aug-20
155	Dius	Sungai Sena Village, Silat Hilir Sub District, Kapuas Hulu District, Kalimantan Barat Province, Indonesia	111°58'33.525"E	0°16'7.201"N	0.864	0.813	11,644	No	25-Aug-20
156	Martinus Anjan	Sungai Sena Village, Silat Hilir Sub District, Kapuas Hulu District, Kalimantan Barat Province, Indonesia	111°58'27.704"E	0°15'58.709"N	0.27	0.243	2,798	No	25-Aug-20

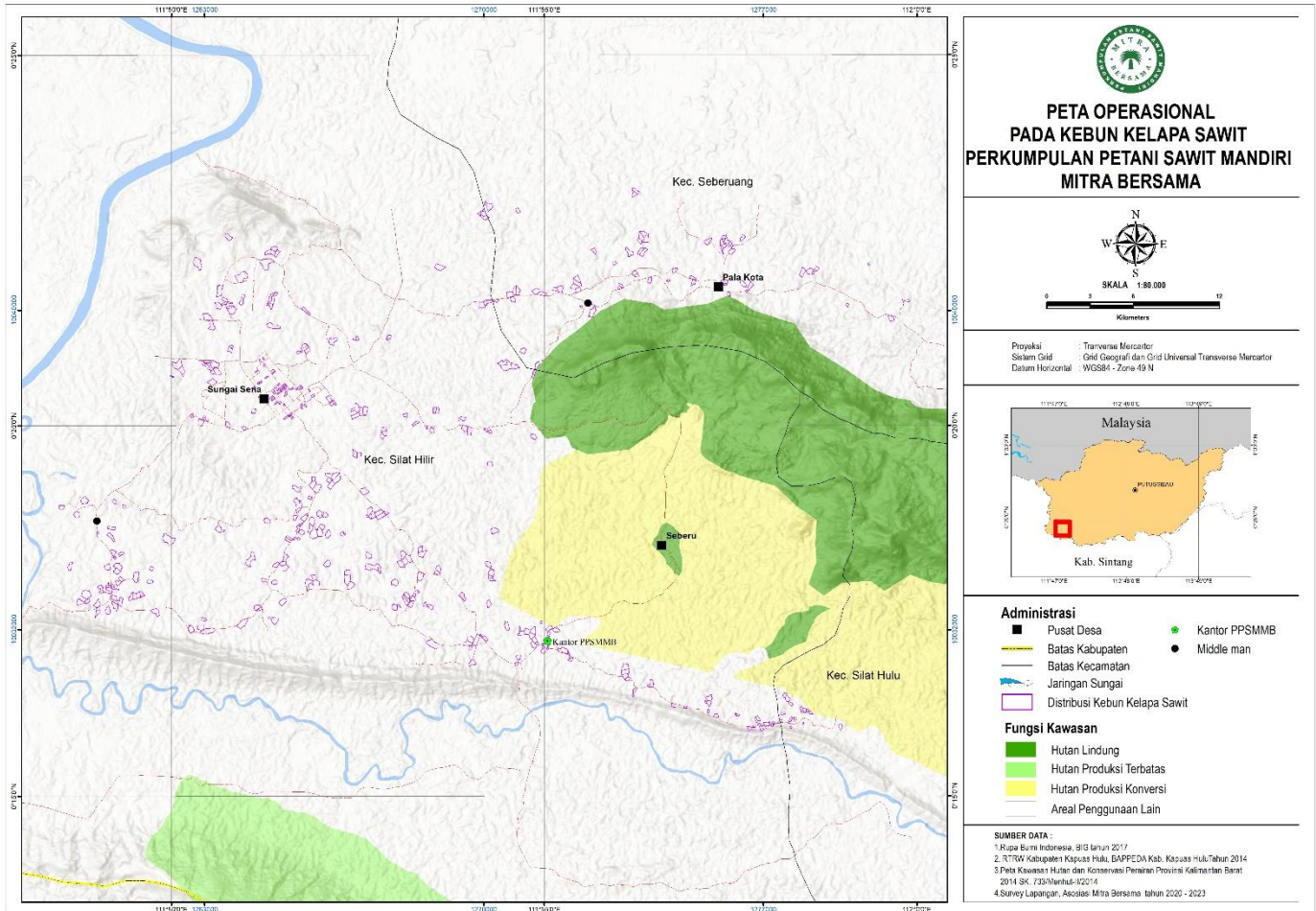
157	Yulius Sila	Sungai Sena Village, Silat Hilir Sub District, Kapuas Hulu District, Kalimantan Barat Province, Indonesia	111°58'26.01"E	0°16'10.625"N	0.525	0.504	7,690	No	25-Aug-20
158	Abang Ibrahim	Sungai Sena Village, Silat Hilir Sub District, Kapuas Hulu District, Kalimantan Barat Province, Indonesia	111°55'8.878"E	0°17'14.311"N	1.62000	1.617	9,763	No	10-Sep-22
159	Ade Sopian	Sungai Sena Village, Silat Hilir Sub District, Kapuas Hulu District, Kalimantan Barat Province, Indonesia	111°54'38.536"E	0°16'52.583"N	1	0.998	2,820	No	10-Sep-22
160	Ahmad Misnan 1	Sungai Sena Village, Silat Hilir Sub District, Kapuas Hulu District, Kalimantan Barat Province, Indonesia	111°55'0.245"E	0°17'2.216"N	1.2	1.198	12,713	No	25-Aug-20
161	Ahmad Misnan 2	Sungai Sena Village, Silat Hilir Sub District, Kapuas Hulu District, Kalimantan Barat Province, Indonesia	111°55'21.318"E	0°16'51.009"N	1.1	1.050	6,828	No	25-Aug-20
162	Albertus Alis Sapri 1	Seberu Village, Silat Hilir Sub District, Kapuas Hulu District, Kalimantan Barat Province, Indonesia	111°56'4.495"E	0°16'44.511"N	2	1.994	14,510	No	25-Aug-20
163	Albertus Alis Sapri 2	Sungai Sena Village, Silat Hilir Sub District, Kapuas Hulu District, Kalimantan Barat Province, Indonesia	111°56'4.66"E	0°16'40.754"N	2	1.995	15,070	No	25-Aug-20
164	Herbin Ezer Anggiat	Sungai Sena Village, Silat Hilir Sub District, Kapuas Hulu District, Kalimantan Barat Province, Indonesia	111°55'3.031"E	0°17'11.573"N	0.85	0.850	7,826	No	25-Aug-20
165	Ismail	Sungai Sena Village, Silat Hilir Sub District, Kapuas Hulu District, Kalimantan Barat Province, Indonesia	111°54'29.192"E	0°17'17.786"N	1.89	1.886	6,425	No	25-Aug-20
166	Lambertus Ludai	Sungai Sena Village, Silat Hilir Sub District, Kapuas Hulu District, Kalimantan Barat Province, Indonesia	111°54'59.386"E	0°16'58.017"N	1.3	1.290	2,990	No	25-Aug-20
167	M Hanafi	Sungai Sena Village, Silat Hilir Sub District, Kapuas Hulu District, Kalimantan Barat Province, Indonesia	111°51'19.315"E	0°21'43.001"N	4.2	4.195	7,632	No	10-Sep-22
168	Madawin 1	Sungai Sena Village, Silat Hilir Sub District, Kapuas Hulu District, Kalimantan Barat Province, Indonesia	111°54'11.847"E	0°17'7.507"N	0.9	0.891	4,470	No	25-Aug-20
169	Madawin 2	Sungai Sena Village, Silat Hilir Sub District, Kapuas Hulu District, Kalimantan Barat Province, Indonesia	111°54'48.688"E	0°17'10.135"N	1.6	1.596	15,273	No	25-Aug-20
170	Madawin 3	Sungai Sena Village, Silat Hilir Sub District, Kapuas Hulu District, Kalimantan Barat Province, Indonesia	111°54'50.39"E	0°17'13.635"N	1.7	1.694	11,170	No	25-Aug-20
171	Madawin 4	Sungai Sena Village, Silat Hilir Sub District, Kapuas Hulu District, Kalimantan Barat Province, Indonesia	111°55'0.368"E	0°16'59.476"N	0.79	0.784	14,675	No	25-Aug-20
172	Madawin 6	Sungai Sena Village, Silat Hilir Sub District, Kapuas Hulu District, Kalimantan Barat Province, Indonesia	111°54'41.831"E	0°17'12.067"N	1.76	1.754	15,517	No	25-Aug-20
173	Marjono	Seberu Village, Silat Hilir Sub District, Kapuas Hulu District, Kalimantan Barat Province, Indonesia	111°55'15.493"E	0°16'57.947"N	2	1.994	10,253	No	10-Sep-22
174	Setepanus Luti	Sungai Sena Village, Silat Hilir Sub District, Kapuas Hulu District, Kalimantan Barat Province, Indonesia	111°54'51.485"E	0°17'6.333"N	1.2	1.199	2,600	No	25-Aug-20
175	Zainudin	Sungai Sena Village, Silat Hilir Sub District, Kapuas Hulu District, Kalimantan Barat Province, Indonesia	111°54'53.284"E	0°17'3.113"N	0.46	0.453	29,934	No	25-Aug-20
176	Adi Sutarto	Sungai Sena Village, Silat Hilir Sub District, Kapuas Hulu District, Kalimantan Barat Province, Indonesia	111°53'24.328"E	0°19'59.103"N	1.1	1.058	8,022	No	25-Aug-20
177	Agustinus Alin	Sungai Sena Village, Silat Hilir Sub District, Kapuas Hulu District, Kalimantan Barat Province, Indonesia	111°53'28.91"E	0°19'56.263"N	1.2	1.197	4,218	No	25-Aug-20
178	Ahudian	Sungai Sena Village, Silat Hilir Sub District, Kapuas Hulu District, Kalimantan Barat Province, Indonesia	111°54'50.571"E	0°19'51.057"N	2	1.965	6,494	No	10-Sep-22
179	Gansi	Sungai Sena Village, Silat Hilir Sub District, Kapuas Hulu District, Kalimantan Barat Province, Indonesia	111°54'12.498"E	0°19'56.492"N	1.3	1.295	4,712	No	25-Aug-20
180	Pinoh	Sungai Sena Village, Silat Hilir Sub District, Kapuas Hulu District, Kalimantan Barat Province, Indonesia	111°54'15.802"E	0°19'54.825"N	1.4107	1.136	6,957	No	25-Aug-20
181	W. Lukas Putra	Pala Kola Village, Seberuang Sub District, Kapuas Hulu District, Kalimantan Barat Province, Indonesia	111°55'2.198"E	0°17'3.273"N	0.3	0.294	6,676	No	10-Sep-22
182	Yusup 1	Sungai Sena Village, Silat Hilir Sub District, Kapuas Hulu District, Kalimantan Barat Province, Indonesia	111°53'55.52"E	0°19'57.771"N	1.8	1.795	13,084	No	25-Aug-20
183	Yusup 2	Sungai Sena Village, Silat Hilir Sub District, Kapuas Hulu District, Kalimantan Barat Province, Indonesia	111°53'59.313"E	0°19'55.952"N	1.9	1.896	8,802	No	25-Aug-20
184	Abang Alamsah	Pala Kola Village, Seberuang Sub District, Kapuas Hulu District, Kalimantan Barat Province, Indonesia	111°54'37.117"E	0°16'46.9"N	0.6	0.598	22,489	No	10-Sep-22
185	Ahmad Jainuri 1	Sungai Sena Village, Silat Hilir Sub District, Kapuas Hulu District, Kalimantan Barat Province, Indonesia	111°53'59.313"E	0°19'55.952"N	1.5	1.491	21,882	No	25-Aug-20
186	Ahmad Jainuri 2	Pala Kola Village, Seberuang Sub District, Kapuas Hulu District, Kalimantan Barat Province, Indonesia	111°53'9.305"E	0°17'39.441"N	1.2	1.199	21,811	No	25-Aug-20
187	Ajusius	Pala Kola Village, Seberuang Sub District, Kapuas Hulu District, Kalimantan Barat Province, Indonesia	111°52'59.18"E	0°17'53.182"N	2	1.998	22,275	No	25-Aug-20
188	Alok	Pala Kola Village, Seberuang Sub District, Kapuas Hulu District, Kalimantan Barat Province, Indonesia	111°53'15.59"E	0°17'45.002"N	1.5	1.450	8,227	No	25-Aug-20
189	Aman Santosa 1	Sungai Sena Village, Silat Hilir Sub District, Kapuas Hulu District, Kalimantan Barat Province, Indonesia	111°53'57.631"E	0°17'3.682"N	2	1.996	11,762	No	25-Aug-20
190	Aman Santosa 2	Sungai Sena Village, Silat Hilir Sub District, Kapuas Hulu District, Kalimantan Barat Province, Indonesia	111°53'59.583"E	0°16'59.979"N	0.64	0.635	18,240	No	25-Aug-20
191	Dominikus Trang 1	Pala Kola Village, Seberuang Sub District, Kapuas Hulu District, Kalimantan Barat Province, Indonesia	111°54'14.334"E	0°17'36.264"N	1.3	1.295	6,356	No	25-Aug-20
192	Dominikus Trang 2	Sungai Sena Village, Silat Hilir Sub District, Kapuas Hulu District, Kalimantan Barat Province, Indonesia	111°53'23.25"E	0°17'35.575"N	0.8	0.760	2,696	No	25-Aug-20
193	Fransiskus Buali	Sungai Sena Village, Silat Hilir Sub District, Kapuas Hulu District, Kalimantan Barat Province, Indonesia	111°53'59.791"E	0°17'6.89"N	1.7	1.692	2,110	No	25-Aug-20
194	Fransiskus Buali 1	Seberu Village, Silat Hilir Sub District, Kapuas Hulu District, Kalimantan Barat Province, Indonesia	111°53'32.908"E	0°18'1.517"N	1.23	1.186	12,055	No	25-Aug-20
195	Fransiskus Buali 2	Seberu Village, Silat Hilir Sub District, Kapuas Hulu District, Kalimantan Barat Province, Indonesia	111°53'34.066"E	0°18'3.887"N	1.45	1.441	11,755	No	25-Aug-20
196	Heru Dinisir	Sungai Sena Village, Silat Hilir Sub District, Kapuas Hulu District, Kalimantan Barat Province, Indonesia	111°53'27.608"E	0°17'33.186"N	1.2	1.197	11,955	No	25-Aug-20

197	Hironimus Apin	Seberu Village, Silat Hilir Sub District, Kapuas Hulu District, Kalimantan Barat Province, Indonesia	111°53'11.777"E	0°17'35.339"N	1.2	1.196	4,075	No	25-Aug-20
198	Indrayadi	Seberu Village, Silat Hilir Sub District, Kapuas Hulu District, Kalimantan Barat Province, Indonesia	111°52'52.316"E	0°18'49.129"N	0.57	0.566	5,401	No	10-Sep-22
199	Lorensius Akau 1	Sungai Sena Village, Silat Hilir Sub District, Kapuas Hulu District, Kalimantan Barat Province, Indonesia	111°53'4.329"E	0°18'7.932"N	2	1.999	7,430	No	25-Aug-20
200	Lorensius Akau 3	Sungai Sena Village, Silat Hilir Sub District, Kapuas Hulu District, Kalimantan Barat Province, Indonesia	111°53'7.139"E	0°18'10.692"N	2	1.997	7,284	No	25-Aug-20
201	Lunyan 1	Sungai Sena Village, Silat Hilir Sub District, Kapuas Hulu District, Kalimantan Barat Province, Indonesia	111°54'8.641"E	0°17'9.849"N	0.3	0.297	7,475	No	25-Aug-20
202	Lunyan 2	Sungai Sena Village, Silat Hilir Sub District, Kapuas Hulu District, Kalimantan Barat Province, Indonesia	111°54'1.677"E	0°16'48.234"N	1.75	1.742	4,929	No	25-Aug-20
203	Mulyadi	Sungai Sena Village, Silat Hilir Sub District, Kapuas Hulu District, Kalimantan Barat Province, Indonesia	111°54'4.625"E	0°17'6.956"N	3.5	3.461	13,460	No	10-Sep-22
204	Setiadi Sukma	Sungai Sena Village, Silat Hilir Sub District, Kapuas Hulu District, Kalimantan Barat Province, Indonesia	111°54'17.031"E	0°17'55.504"N	2	1.955	10,572	No	25-Aug-20
205	Siprianus Hasan 1	Sungai Sena Village, Silat Hilir Sub District, Kapuas Hulu District, Kalimantan Barat Province, Indonesia	111°52'37.572"E	0°18'5.907"N	2	1.995	14,045	No	25-Aug-20
206	Siprianus Hasan 2	Sungai Sena Village, Silat Hilir Sub District, Kapuas Hulu District, Kalimantan Barat Province, Indonesia	111°52'42.794"E	0°18'5.407"N	2	1.995	14,034	No	25-Aug-20
207	Suparto 1	Sungai Sena Village, Silat Hilir Sub District, Kapuas Hulu District, Kalimantan Barat Province, Indonesia	111°52'46.725"E	0°18'49.389"N	2	1.996	49,135	No	25-Aug-20
208	Suparto 3	Sungai Sena Village, Silat Hilir Sub District, Kapuas Hulu District, Kalimantan Barat Province, Indonesia	111°53'19.615"E	0°17'58.487"N	2	1.991	49,143	No	25-Aug-20
209	Susana Jawai	Sungai Sena Village, Silat Hilir Sub District, Kapuas Hulu District, Kalimantan Barat Province, Indonesia	111°52'41.303"E	0°18'47.755"N	1.5	1.496	31,340	No	10-Sep-22
210	Tait	Sungai Sena Village, Silat Hilir Sub District, Kapuas Hulu District, Kalimantan Barat Province, Indonesia	111°54'19.157"E	0°18'35.094"N	2	1.996	3,290	No	25-Aug-20
211	Thomas Edison	Sungai Sena Village, Silat Hilir Sub District, Kapuas Hulu District, Kalimantan Barat Province, Indonesia	111°53'19.301"E	0°18'19.956"N	2	1.996	14,731	No	25-Aug-20
212	Tomas	Sungai Sena Village, Silat Hilir Sub District, Kapuas Hulu District, Kalimantan Barat Province, Indonesia	111°53'19.301"E	0°18'19.956"N	2	1.995	6,270	No	25-Aug-20
213	Zudi Zainudin	Sungai Sena Village, Silat Hilir Sub District, Kapuas Hulu District, Kalimantan Barat Province, Indonesia	111°53'19.301"E	0°18'19.956"N	4.1	4.054	20,380	No	25-Aug-20
214	Ading	Pala Kola Village, Seberuang Sub District, Kapuas Hulu District, Kalimantan Barat Province, Indonesia	111°57'11.269"E	0°22'29.391"N	1.791	1.778	6,719	No	25-Aug-20
215	Alexza Trisman	Sungai Sena Village, Silat Hilir Sub District, Kapuas Hulu District, Kalimantan Barat Province, Indonesia	111°56'21.822"E	0°22'30.785"N	2.005	1.999	6,884	No	25-Aug-20
216	Antonius	Seberu Village, Silat Hilir Sub District, Kapuas Hulu District, Kalimantan Barat Province, Indonesia	111°57'42.686"E	0°21'48.766"N	0.2444	0.234	737	No	10-Sep-22
217	Bibi Hanani	Seberu Village, Silat Hilir Sub District, Kapuas Hulu District, Kalimantan Barat Province, Indonesia	111°57'29.558"E	0°22'27.033"N	0.6975	0.671	1,895	No	10-Sep-22
218	Bujang Mulyadi	Sungai Sena Village, Silat Hilir Sub District, Kapuas Hulu District, Kalimantan Barat Province, Indonesia	111°59'38.813"E	0°21'26.471"N	1.4815	1.466	27,900	No	25-Aug-20
219	Entukung	Seberu Village, Silat Hilir Sub District, Kapuas Hulu District, Kalimantan Barat Province, Indonesia	111°57'22.259"E	0°22'28.005"N	1.156	1.156	8,568	No	25-Aug-20
220	Handoko	Sungai Sena Village, Silat Hilir Sub District, Kapuas Hulu District, Kalimantan Barat Province, Indonesia	111°58'27.467"E	0°22'3.897"N	1.862	1.853	2,796	No	25-Aug-20
221	Hendriyanus	Sungai Sena Village, Silat Hilir Sub District, Kapuas Hulu District, Kalimantan Barat Province, Indonesia	111°57'28.036"E	0°22'25.877"N	0.8237	0.821	4,926	No	25-Aug-20
222	Rosna Oktaviani	Seberu Village, Silat Hilir Sub District, Kapuas Hulu District, Kalimantan Barat Province, Indonesia	111°57'38.94"E	0°22'31.523"N	2.157	2.111	4,607	No	10-Sep-22
223	Sawat 2	Sungai Sena Village, Silat Hilir Sub District, Kapuas Hulu District, Kalimantan Barat Province, Indonesia	111°57'26.495"E	0°22'29.113"N	0.4678	0.450	828	No	25-Aug-20
224	Sawat 3	Sungai Sena Village, Silat Hilir Sub District, Kapuas Hulu District, Kalimantan Barat Province, Indonesia	111°57'24.137"E	0°21'56.68"N	1.562	1.553	4,461	No	25-Aug-20
225	Sunyi	Pala Kola Village, Seberuang Sub District, Kapuas Hulu District, Kalimantan Barat Province, Indonesia	111°54'12.016"E	0°21'39.508"N	1.065	1.027	6,464	No	25-Aug-20
227	Dangan	Pala Kola Village, Seberuang Sub District, Kapuas Hulu District, Kalimantan Barat Province, Indonesia	111°59'21.025"E	0°22'10.675"N	0.8817	0.863	5,830	No	25-Aug-20
228	Yakob Urande Tamben	Pala Kola Village, Seberuang Sub District, Kapuas Hulu District, Kalimantan Barat Province, Indonesia	111°59'3.042"E	0°21'37.701"N	0.8304	0.823	3,610	No	25-Aug-20
226	Urai	Pala Kola Village, Seberuang Sub District, Kapuas Hulu District, Kalimantan Barat Province, Indonesia	111°57'24.372"E	0°22'32.615"N	0.6717	0.621	17,287	No	10-Sep-22
229	Hendrikus Yanto 1	Sungai Sena Village, Silat Hilir Sub District, Kapuas Hulu District, Kalimantan Barat Province, Indonesia	111°56'16.513"E	0°22'29.462"N	1.009	0.985	7,327	No	10-Sep-22
230	Hendrikus Yanto 2	Seberu Village, Silat Hilir Sub District, Kapuas Hulu District, Kalimantan Barat Province, Indonesia	111°56'19.447"E	0°22'35.042"N	1.707	1.701	8,583	No	10-Sep-22
231	Mariata Tunggi	Sungai Sena Village, Silat Hilir Sub District, Kapuas Hulu District, Kalimantan Barat Province, Indonesia	111°56'39.23"E	0°21'57.29"N	1.985	1.937	5,316	No	25-Aug-20
232	Maringan Sidabutar	Seberu Village, Silat Hilir Sub District, Kapuas Hulu District, Kalimantan Barat Province, Indonesia	111°55'39.558"E	0°22'21.59"N	0.9656	0.960	11,183	No	25-Aug-20
233	Markus	Sungai Sena Village, Silat Hilir Sub District, Kapuas Hulu District, Kalimantan Barat Province, Indonesia	111°56'58.847"E	0°21'59.185"N	0.9032	0.901	8,176	No	25-Aug-20
234	Martinus 1	Sungai Sena Village, Silat Hilir Sub District, Kapuas Hulu District, Kalimantan Barat Province, Indonesia	111°56'17.744"E	0°22'32.173"N	1.829	1.809	13,601	No	25-Aug-20
235	Martinus 2	Sungai Sena Village, Silat Hilir Sub District, Kapuas Hulu District, Kalimantan Barat Province, Indonesia	111°56'19.255"E	0°22'20.368"N	1.916	1.892	7,720	No	25-Aug-20
236	Alias	Sungai Sena Village, Silat Hilir Sub District, Kapuas Hulu District, Kalimantan Barat Province, Indonesia	111°54'9.248"E	0°21'37.638"N	2	1.963	25,252	No	25-Aug-20

237	Andi	Sungai Sena Village, Silat Hilir Sub District, Kapuas Hulu District, Kalimantan Barat Province, Indonesia	111°54'15.586"E	0°22'56.808"N	5.6	5.594	55,326	No	10-Sep-22
238	Andreas Ika 1	Pala Kola Village, Seberuang Sub District, Kapuas Hulu District, Kalimantan Barat Province, Indonesia	111°54'53.022"E	0°21'48.691"N	1.981	1.945	18,208	No	10-Sep-22
239	Andreas Ika 2	Sungai Sena Village, Silat Hilir Sub District, Kapuas Hulu District, Kalimantan Barat Province, Indonesia	111°55'26.22"E	0°21'50.606"N	1.16	1.154	14,606	No	10-Sep-22
240	Andreas Ika 3	Sungai Sena Village, Silat Hilir Sub District, Kapuas Hulu District, Kalimantan Barat Province, Indonesia	111°54'57.687"E	0°21'46.747"N	1.742	1.704	16,000	No	10-Sep-22
241	Dia Panak	Sungai Sena Village, Silat Hilir Sub District, Kapuas Hulu District, Kalimantan Barat Province, Indonesia	111°55'8.389"E	0°21'50.259"N	1.152	1.101	4,454	No	10-Sep-22
242	Eko Purnomo 1	Sungai Sena Village, Silat Hilir Sub District, Kapuas Hulu District, Kalimantan Barat Province, Indonesia	111°55'12.204"E	0°21'50.535"N	1.817	1.810	33,180	No	25-Aug-20
243	Eko Purnomo 2	Seberu Village, Silat Hilir Sub District, Kapuas Hulu District, Kalimantan Barat Province, Indonesia	111°54'34.191"E	0°21'42.111"N	1.266	1.263	17,275	No	25-Aug-20
244	Eko Purnomo 3	Sungai Sena Village, Silat Hilir Sub District, Kapuas Hulu District, Kalimantan Barat Province, Indonesia	111°54'32.403"E	0°21'46.08"N	1.992	1.983	30,315	No	25-Aug-20
245	Ellawaty	Sungai Sena Village, Silat Hilir Sub District, Kapuas Hulu District, Kalimantan Barat Province, Indonesia	111°54'16.296"E	0°21'40.562"N	1.078	1.040	7,927	No	10-Sep-22
246	H. Adias Gudang (Kusmadi)	Pala Kola Village, Seberuang Sub District, Kapuas Hulu District, Kalimantan Barat Province, Indonesia	111°54'50.482"E	0°20'40.227"N	1.549	1.548	4,316	No	25-Aug-20
247	Harles Pasaribu	Sungai Sena Village, Silat Hilir Sub District, Kapuas Hulu District, Kalimantan Barat Province, Indonesia	111°56'12.393"E	0°22'3.619"N	1.082	1.038	17,259	No	10-Sep-22
248	Kudang	Pala Kola Village, Seberuang Sub District, Kapuas Hulu District, Kalimantan Barat Province, Indonesia	111°54'38.278"E	0°22'54.098"N	0.9761	0.937	7,038	No	10-Sep-22
249	Laurina	Pala Kola Village, Seberuang Sub District, Kapuas Hulu District, Kalimantan Barat Province, Indonesia	111°54'38.369"E	0°21'49.124"N	1.819	1.811	6,636	No	10-Sep-22
250	Lorensius	Sungai Sena Village, Silat Hilir Sub District, Kapuas Hulu District, Kalimantan Barat Province, Indonesia	111°55'29.348"E	0°21'36.065"N	1.514	1.499	4,126	No	25-Aug-20
251	Margono	Sungai Sena Village, Silat Hilir Sub District, Kapuas Hulu District, Kalimantan Barat Province, Indonesia	111°54'35.74"E	0°21'48.292"N	1.716	1.706	6,437	No	10-Sep-22
252	Marius Finaldi Kario	Sungai Sena Village, Silat Hilir Sub District, Kapuas Hulu District, Kalimantan Barat Province, Indonesia	111°55'56.004"E	0°22'11.27"N	0.597	0.588	1,897	No	25-Aug-20
253	Markus Banying	Sungai Sena Village, Silat Hilir Sub District, Kapuas Hulu District, Kalimantan Barat Province, Indonesia	111°54'42.381"E	0°21'0.453"N	1.557	1.510	6,388	No	10-Sep-22
254	Riki Rikardo	Seberu Village, Silat Hilir Sub District, Kapuas Hulu District, Kalimantan Barat Province, Indonesia	111°56'44.429"E	0°22'5.334"N	0.9214	0.918	18,175	No	25-Aug-20
255	Santo	Sungai Sena Village, Silat Hilir Sub District, Kapuas Hulu District, Kalimantan Barat Province, Indonesia	111°54'21.535"E	0°21'40.982"N	0.6616	0.660	6,904	No	10-Sep-22
256	Seriyana	Sungai Sena Village, Silat Hilir Sub District, Kapuas Hulu District, Kalimantan Barat Province, Indonesia	111°56'13.822"E	0°22'1.328"N	0.7976	0.795	12,470	No	10-Sep-22
257	Tatam 2	Sungai Sena Village, Silat Hilir Sub District, Kapuas Hulu District, Kalimantan Barat Province, Indonesia	111°54'27.185"E	0°20'47.073"N	1.837	1.834	16,763	No	25-Aug-20
258	Tatam 3	Seberu Village, Silat Hilir Sub District, Kapuas Hulu District, Kalimantan Barat Province, Indonesia	111°54'35.99"E	0°20'47.812"N	1.974	1.970	10,306	No	25-Aug-20
259	Tatam 4	Seberu Village, Silat Hilir Sub District, Kapuas Hulu District, Kalimantan Barat Province, Indonesia	111°54'31.132"E	0°20'48.733"N	1.992	1.977	9,628	No	25-Aug-20
260	Tatam 5	Seberu Village, Silat Hilir Sub District, Kapuas Hulu District, Kalimantan Barat Province, Indonesia	111°54'25.84"E	0°20'50.231"N	2.009	1.978	13,197	No	25-Aug-20
261	Yohanes Abu 1	Sungai Sena Village, Silat Hilir Sub District, Kapuas Hulu District, Kalimantan Barat Province, Indonesia	111°55'25.861"E	0°21'58.438"N	1.7579	1.843	10,642	No	25-Aug-20
262	Yohanes Abu 2	Seberu Village, Silat Hilir Sub District, Kapuas Hulu District, Kalimantan Barat Province, Indonesia	111°55'26.241"E	0°21'55.028"N	1.936	1.932	10,874	No	25-Aug-20
<b>TOTAL</b>					359.797	358.766	2,981,944		



Peta lokasi untuk unit sertifikasi adalah:



Mutuagung Lestari, atau yang disebut juga Mutu Certification International (MUTU), bermula sebagai lembaga inspeksi, laboratorium dan sertifikasi sejak tahun 1990. Merupakan Perusahaan Private Nasional yang didukung oleh sumber daya manusia yang profesional dengan komitmen tinggi serta telah diakui secara Nasional dan Internasional. Sejak Juni 2003, MUTU telah mendapatkan pengakuan dari Menteri Pertanian, Kehutanan dan Perikanan Jepang sebagai Organisasi Sertifikasi Asing yang terdaftar atau Registered Overseas Certification Body (ROCB) yang bertugas memberikan sertifikat terhadap produk yang memenuhi persyaratan Japan Agricultural Standard (JAS), dimana wilayah yang dibawah meliputi Indonesia, Myanmar, Kamboja, Malaysia, Vietnam, Timor Leste, Philipina, Papua Nugini, dan China. Dengan pengakuan ini, MUTU merupakan anggota ROCB pertama di Asia. Komite Akreditasi Nasional (KAN) telah mengakreditasi MUTU sebagai Lembaga sertifikasi Sistem Manajemen Mutu (ISO 9001:2015) dan Lembaga Sertifikasi Sistem Manajemen Lingkungan (ISO 14001:2015). Lembaga Ekolabel Indonesia (LEI) juga telah mengakreditasi MUTU sebagai Lembaga sertifikasi Pengelolaan Hutan Lestari, Lembaga Sertifikasi Indonesian Sustainable Palm Oil (ISPO). Sejak Maret 2014 MUTU telah terakreditasi oleh Accreditation Services International (ASI) sebagai lembaga sertifikasi RSPO.

Tim auditor untuk penilaian sertifikasi akan dipimpin oleh **Moh Arif Yusni** dan tim auditor lainnya dari PT Mutuagung Lestari, terdiri dari:

Tim Auditor	Peran Audit	Kualifikasi dan Pengalaman
Moh Arif Yusni	Legalitas, TBP, <i>Partial Certification</i> , Aspek Lingkungan, Manajemen Limbah, GHG dan Konservasi	Warga Negara Indonesia. Sarjana Pertanian, jurusan Proteksi Tanaman. Memiliki pengalaman bekerja sebagai staff operasional di salah satu perusahaan perkebunan kelapa sawit swasta di Indonesia tahun 2010 - 2012. Telah mengikuti beberapa pelatihan, yaitu: ISO 19011, ISO 9001; ISO 14001, SA 8000, pelayihan lead auditor RSPO tahun 2014, ISPO lead auditor, Ahli K3, Auditor K3 dibawah Pemerintah No.50/2012, SCCS, dan pembaharuan pelatihan lead auditor RSPO dan ISPO tahun 2021. Telah melakukan audit ISPO, RSPO dan MSPO sebagai auditor dan lead auditor dengan keahlian di bidang praktik manajemen terbaik untuk perkebunan dan pabrik, legalitas, kesejahteraan pekerja, keselamatan, sosial, lingkungan, konservasi, transparansi, rencana pengelolaan ekonomi jangka panjang dan rantai pasokan untuk aspek pabrik kelapa sawit.
Radytio Puspanjana	Aspek Lingkungan, HCV, Sosial, dan GHG	Warga Negara Indonesia. Sarjana Agrikultur, Jurusan Ilmu Tanah, Fakultas Agrikultur. Pernah bekerja sebagai pegawai honorer di Dinas Perkebunan Provinsi Riau pada bagian perkebunan besar selama 1 tahun. Mengikuti pelatihan Survey and Mapping (GIS) yang diselenggarakan oleh National GMTI, pelatihan auditor ISPO, pelatihan auditor ISO 9001/2008, pelatihan auditor ISO 1400/2004, IHT Sistem Informasi Geospasial, IHT Nilai Konservasi Tinggi, IHT Penilaian Dampak Lingkungan, IHT Gas Rumah Kaca dan Pelatihan Lead Auditor RSPO oleh Checkmark. Sejak 2015 telah mengikuti beberapa audit sebagai auditor Praktik Terbaik Budidaya Ketenagakerjaan dan Lingkungan.
Kiki Fadli	Praktik Terbaik Budidaya Ketenagakerjaan dan OHS	Warga Negara Indonesia. Sarjana Teknik Agrikultural, Program Studi Teknik Agrikultural. Memiliki pengalaman kerja di perkebunan kelapa sawit berkelanjutan swasta dan milik Negara. Telah mengikuti pelatihan Lead Auditor ISPO, Lead Auditor RSPO, General OHS Expert, ISO 9001:2008, ISO 14001:2015, ISO 17021, ISO 17065, HCV, SMK3.

Untuk membantu pelaksanaan proses penilaian di lokasi tersebut, PT. Mutuagung Lestari mengundang para pihak untuk memberikan komentar terhadap hal-hal yang menjadi poin penilaian seperti di bawah ini:

- a. Kelestarian lingkungan di sekitar kebun atau pabrik termasuk penggunaan pestisida dan penanganan limbah
- b. Keanekaragaman hayati di sekitar kebun dan pabrik serta lingkungan sekitarnya
- c. Peluang Kerja
- d. Kontribusi perusahaan terhadap pembangunan daerah
- e. Kondisi perumahan, sanitasi, fasilitas dan sarana pendukung pendidikan.
- f. Permasalahan lainnya yang berkaitan dengan sertifikasi.

Komentar akan diterima dalam waktu 30 hari setelah surat ini dikeluarkan untuk kami pertimbangkan dalam proses penilaian. Dan isilah formulir di bawah ini serta lampirkan pada lembaran komentar sebagai data pribadi anda, dan untuk kami melakukan klarifikasi terhadap saran atau komentar yang anda berikan.

Nama : \_\_\_\_\_  
Alamat : \_\_\_\_\_  
Nomor Telepon : \_\_\_\_\_  
Nomor Fax : \_\_\_\_\_

Bila dalam memberikan komentar data pribadi anda tidak ingin dipublikasikan. Anda dapat menuliskan kata 'RAHASIA' dalam surat komentar anda. Silahkan kirimkan komentar anda kepada :

**PT MUTUAGUNG LESTARI****Leonada****Operations Manager**

Jl. Raya Bogor Km. 33,5 No. 19

Cimanggis, Depok - Indonesia 16953

Telp. (+62-21) 8740202

Fax. (+62-21) 87740745/46

[agri@mutucertification.com](mailto:agri@mutucertification.com)web : [www.mutucertification.com](http://www.mutucertification.com)**Perkumpulan Petani Sawit Mitra Mandiri Bersama  
(PPSMMB)****Syahirsyah****Sustainable Commodities Coordinator WWF Indonesia**

Jalan Lintas Selatan KM 185 Desa Seberu Kabupaten

Kapuas Hulu

Tlp: (+62) 811566832

[syahirsyah@wwf.id](mailto:syahirsyah@wwf.id)

Kami ucapkan terima kasih atas segala komentar yang anda berikan.

Hormat kami,

**Irham Budiman**

Direktur PT Mutuagung Lestari