

Tanggal : 15 September 2023

Notifikasi untuk Kegiatan Sertifikasi RSPO Milestone-B Gabungan Kelompok Tani (Gapoktan) Tani Mandiri (RSPO Membership Number: 1-0455-23-000-00, 11 September 2023)

Stakeholder yang terhormat,

PT Mutuagung Lestari akan melakukan sertifikasi (*Milestone-B*) terhadap Gabungan Kelompok Tani (Gapoktan) Tani Mandiri yang berlokasi di Desa Laut Tador, Kecamatan Sei Suka, Kabupaten Batu Bara, Provinsi Sumatera Utara, Indonesia untuk memenuhi terhadap Standar Pekebun Swadaya RSPO Interpretasi Nasional Indonesia untuk Produksi Minyak Sawit Lestari 2020, disahkan oleh Dewan Gubernur RSPO pada tanggal 14 Februari 2022.

Gabungan Kelompok Tani (Gapoktan) Tani Mandiri telah terdaftar di *PalmTrace IT platform* dengan *member ID* RSPO_PO1000016093 dan akan menjalani proses sertifikasi RSPO untuk keseluruhan area produksi dibawah manajemennya dalam upaya pemenuhan standar RSPO. PT Mutuagung Lestari merencanakan untuk melakukan proses penilaian pada tanggal **19 s.d 21 Oktober 2023**.

Nama <i>Group Manager</i>	Alamat <i>Group Manager</i>	Lokasi <i>ISH Group</i>	Referensi GPS	
			Garis Lintang	Garis Bujur
Jusy Siboro	Desa Laut Tador, Kecamatan Sei Suka, Kabupaten Batu Bara, Provinsi Sumatera Utara, Indonesia	Desa Laut Tador, Kecamatan Sei Suka, Kabupaten Batu Bara, Provinsi Sumatera Utara, Indonesia	3° 16' 48.7" LU	99° 15' 17.7" BT

Gabungan Keolompok Tani Mandiri (Gapoktan) Tani Mandiri adalah organisasi Petani kelapa sawit yang dibentuk dan disahkan oleh Kementerian Hukum dan Hak Asasi Manusia pada tanggal 08 Oktober 2019 dengan Nomor AHU-02.02-34. Gapoktani ini beralamat di Desa Laut Tador, Kecamatan Sei Suka, Kabupaten Batu Bara, Provinsi Sumatera Utara.

Gabungan Keolompok Tani Mandiri (Gapoktan) Tani Mandiri dibentuk dengan tujuan menjadi forum bagi petani kelapa sawit untuk menerapkan prinsip-prinsip minyak sawit berkelanjutan (RSPO *Independent Smallholder*). Dalam mewujudkan tujuan ini, Gapoktan Tani Mandiri disukung berbagai pihak diantaranya:

1. Pemerintah Kabupaten Batu Bara
2. Yayasan Inisiatif Dagang Hijau
3. PT Paya Pinang Group
4. PT. Koompasia Enviro Institute.

Setiap pihak berperan di bidangnya masing-masing untuk mendukung kepatuhan terhadap Prinsip dan Kriteria RSPO bagi petani kecil mandiri, mulai dari legalitas hingga kepatuhan lingkungan.

Saat ini Gapoktan Tani Mandiri terdiri dari 379 petani, 638 persil tanah dengan total luas ±421,38 Ha. Untuk meningkatkan kapasitas petani, Gapoktan Tani Mandiri menyelenggarakan beberapa pelatihan seperti:

1. Pelatihan Praktik Pertanian yang Baik
2. Pelatihan Kesadaran RSPO
3. Pelatihan Pembuatan Standar Operasi Prosedur
4. Audit Internal.

List of Group Members Gabungan Kelompok Tani (Gapoktan) Tani Mandiri

No	Name of Farmer	Location	GPS Reference		Area Summary (Ha)		Forecasted Annual FFB Production (MT)	Any Liabilities? Yes/No	Date of Join on the Group
			Latitude	Longitude	Total Certified Area	Planted Area			
1	Abd. Muhalmin	Laut Tador Village, Laut Tador Sub District, Batu Bara District, Sumatera Utara Province, Indonesia	3° 15' 58.571" N	99° 15' 4.899" E	1.52	1.52	27.36	No	10 Oktober 2022
2	Abdi Purba	Kandangan Village, Laut Tador Sub District, Batu Bara District, Sumatera Utara Province, Indonesia	3° 21' 26.617" N	99° 19' 33.203" E	0.72	0.72	12.96	No	10 Oktober 2022
3	Abdul Aziz Purba	Laut Tador Village, Laut Tador Sub District, Batu Bara District, Sumatera Utara Province, Indonesia	3° 15' 55.895" N	99° 15' 10.272" E	0.37	0.37	6.66	No	10 Oktober 2022
4	Abdul Fitriadi 1	Laut Tador Village, Laut Tador Sub District, Batu Bara District, Sumatera Utara Province, Indonesia	3° 16' 15.008" N	99° 15' 59.178" E	0.30	0.30	5.40	No	10 Oktober 2022
	Abdul Fitriadi 2	Laut Tador Village, Laut Tador Sub District, Batu Bara District, Sumatera Utara Province, Indonesia	3° 16' 27.555" N	99° 16' 7.698" E	0.50	0.50	9.00	No	10 Oktober 2022
5	Abdul Gopur	Kandangan Village, Laut Tador Sub District, Batu Bara District, Sumatera Utara Province, Indonesia	3° 21' 41.166" N	99° 18' 21.332" E	0.09	0.09	1.62	No	10 Oktober 2022
6	Abdul Haris Sofyan	Tanjung Prapat Village, Laut Tador Sub District, Batu Bara District, Sumatera Utara Province, Indonesia	3° 14' 18.904" N	99° 13' 13.606" E	0.48	0.48	8.64	No	10 Oktober 2022
7	Abdul Kadir 1	Laut Tador Village, Laut Tador Sub District, Batu Bara District, Sumatera Utara Province, Indonesia	3° 17' 5.493" N	99° 15' 10.089" E	0.27	0.27	4.86	No	10 Oktober 2022
	Abdul Kadir 2	Laut Tador Village, Laut Tador Sub District, Batu Bara District, Sumatera Utara Province, Indonesia	3° 17' 5.954" N	99° 15' 0.000" E	0.51	0.51	9.18	No	10 Oktober 2022
8	Abdul Rahmat Simbolon 1	Laut Tador Village, Laut Tador Sub District, Batu Bara District, Sumatera Utara Province, Indonesia	3° 15' 10.018" N	99° 14' 19.632" E	0.11	0.11	1.98	No	10 Oktober 2022
	Abdul Rahmat Simbolon 2	Laut Tador Village, Laut Tador Sub District, Batu Bara District, Sumatera Utara Province, Indonesia	3° 15' 14.519" N	99° 14' 29.775" E	0.22	0.22	3.96	No	10 Oktober 2022
	Abdul Rahmat Simbolon 3	Laut Tador Village, Laut Tador Sub District, Batu Bara District, Sumatera Utara Province, Indonesia	3° 15' 24.775" N	99° 14' 34.534" E	0.23	0.23	4.14	No	10 Oktober 2022
9	Abelya Person Damanik	Tanjung Kasau Village, Laut Tador Sub District, Batu Bara District, Sumatera Utara Province, Indonesia	3° 17' 25.682" N	99° 16' 0.265" E	0.64	0.64	11.52	No	10 Oktober 2022
10	Aemelia	Laut Tador Village, Laut Tador Sub District, Batu Bara District, Sumatera Utara Province, Indonesia	3° 17' 12.209" N	99° 15' 22.724" E	0.18	0.18	3.24	No	10 Oktober 2022
11	Agus Salim	Tanjung Prapat Village, Laut Tador Sub District, Batu Bara District, Sumatera Utara Province, Indonesia	3° 13' 42.187" N	99° 13' 21.647" E	0.52	0.52	9.36	No	10 Oktober 2022
12	Agus Siregar 1	Laut Tador Village, Laut Tador Sub District, Batu Bara District, Sumatera Utara Province, Indonesia	3° 15' 16.372" N	99° 14' 27.444" E	0.48	0.48	8.64	No	10 Oktober 2022
	Agus Siregar 2	Laut Tador Village, Laut Tador Sub District, Batu Bara District, Sumatera Utara Province, Indonesia	3° 15' 17.154" N	99° 14' 34.774" E	0.29	0.29	5.22	No	10 Oktober 2022
	Agus Siregar 3	Laut Tador Village, Laut Tador Sub District, Batu Bara District, Sumatera Utara Province, Indonesia	3° 15' 27.966" N	99° 14' 27.218" E	0.21	0.21	3.78	No	10 Oktober 2022
	Agus Siregar 4	Laut Tador Village, Laut Tador Sub District, Batu Bara District, Sumatera Utara Province, Indonesia	3° 15' 17.996" N	99° 14' 23.305" E	0.62	0.62	11.16	No	10 Oktober 2022
13	Agustina 1	Kandangan Village, Laut Tador Sub District, Batu Bara District, Sumatera Utara Province, Indonesia	3° 21' 50.586" N	99° 18' 7.933" E	0.20	0.20	3.60	No	10 Oktober 2022
	Agustina 2	Kandangan Village, Laut Tador Sub District, Batu Bara District, Sumatera Utara Province, Indonesia	3° 22' 1.886" N	99° 18' 10.002" E	0.15	0.15	2.70	No	10 Oktober 2022
	Agustina 3	Kandangan Village, Laut Tador Sub District, Batu Bara District, Sumatera Utara Province, Indonesia	3° 21' 48.157" N	99° 17' 48.912" E	0.19	0.19	3.42	No	10 Oktober 2022
	Agustina 4	Kandangan Village, Laut Tador Sub District, Batu Bara District, Sumatera Utara Province, Indonesia	3° 21' 46.150" N	99° 17' 53.229" E	0.66	0.66	11.88	No	10 Oktober 2022
14	Akbor Situmeang	Laut Tador Village, Laut Tador Sub District, Batu Bara District, Sumatera Utara Province, Indonesia	3° 14' 51.804" N	99° 14' 7.341" E	0.77	0.77	13.86	No	10 Oktober 2022
15	Albert Sibuea	Laut Tador Village, Laut Tador Sub District, Batu Bara District, Sumatera Utara Province, Indonesia	3° 15' 58.438" N	99° 15' 18.936" E	0.43	0.43	7.74	No	10 Oktober 2022
16	Albion Naingolan 1	Sei Semujur Village, Laut Tador Sub District, Batu Bara District, Sumatera Utara Province, Indonesia	3° 22' 17.275" N	99° 18' 53.844" E	1.16	1.16	20.88	No	10 Oktober 2022
	Albion Naingolan 2	Sei Semujur Village, Laut Tador Sub District, Batu Bara District, Sumatera Utara Province, Indonesia	3° 21' 14.394" N	99° 17' 15.468" E	1.20	1.20	21.60	No	10 Oktober 2022
17	Alex simbolon	Laut Tador Village, Laut Tador Sub District, Batu Bara District, Sumatera Utara Province, Indonesia	3° 15' 18.985" N	99° 14' 36.416" E	0.12	0.12	2.16	No	10 Oktober 2022
18	Aliadugar Situmorang	Laut Tador Village, Laut Tador Sub District, Batu Bara District, Sumatera Utara Province, Indonesia	3° 16' 20.014" N	99° 15' 43.248" E	0.51	0.51	9.18	No	10 Oktober 2022
19	Alik	Laut Tador Village, Laut Tador Sub District, Batu Bara District, Sumatera Utara Province, Indonesia	3° 15' 58.452" N	99° 15' 34.466" E	0.27	0.27	4.86	No	10 Oktober 2022
20	Alinallah Lubis	Tanjung Kasau Village, Laut Tador Sub District, Batu Bara District, Sumatera Utara Province, Indonesia	3° 16' 48.601" N	99° 15' 46.357" E	2.24	2.24	40.32	No	10 Oktober 2022
21	Almen Sitorus 1	Perkebunan Tanjung Kasau Village, Laut Tador Sub District, Batu Bara District, Sumatera Utara Province, Indonesia	3° 17' 31.055" N	99° 16' 18.322" E	0.27	0.27	4.86	No	10 Oktober 2022
	Almen Sitorus 2	Perkebunan Tanjung Kasau Village, Laut Tador Sub District, Batu Bara District, Sumatera Utara Province, Indonesia	3° 17' 16.746" N	99° 16' 22.292" E	0.60	0.60	10.80	No	10 Oktober 2022
22	Aman Manurung	Perkebunan Tanjung Kasau Village, Laut Tador Sub District, Batu Bara District, Sumatera Utara Province, Indonesia	3° 17' 6.151" N	99° 15' 55.597" E	0.30	0.30	5.40	No	10 Oktober 2022
23	Ambri	Laut Tador Village, Laut Tador Sub District, Batu Bara District, Sumatera Utara Province, Indonesia	3° 15' 50.659" N	99° 15' 59.827" E	0.47	0.47	8.46	No	10 Oktober 2022
24	Amelia	Kandangan Village, Laut Tador Sub District, Batu Bara District, Sumatera Utara Province, Indonesia	3° 21' 37.395" N	99° 19' 41.486" E	1.45	1.45	26.10	No	10 Oktober 2022
25	Amin	Tanjung Prapat Village, Laut Tador Sub District, Batu Bara District, Sumatera Utara Province, Indonesia	3° 14' 21.586" N	99° 13' 12.445" E	0.30	0.30	5.40	No	10 Oktober 2022
26	Amir Sitohang 1	Laut Tador Village, Laut Tador Sub District, Batu Bara District, Sumatera Utara Province, Indonesia	3° 16' 9.299" N	99° 15' 58.107" E	0.54	0.54	9.72	No	10 Oktober 2022
	Amir Sitohang 2	Perkebunan Tanjung Kasau Village, Laut Tador Sub District, Batu Bara District, Sumatera Utara Province, Indonesia	3° 17' 38.715" N	99° 16' 22.444" E	0.28	0.28	5.04	No	10 Oktober 2022
	Amir Sitohang 3	Laut Tador Village, Laut Tador Sub District, Batu Bara District, Sumatera Utara Province, Indonesia	3° 16' 25.427" N	99° 15' 51.969" E	0.25	0.25	4.50	No	10 Oktober 2022
27	Anran Surip 1	Kandangan Village, Laut Tador Sub District, Batu Bara District, Sumatera Utara Province, Indonesia	3° 22' 9.760" N	99° 18' 16.497" E	1.25	1.25	22.50	No	10 Oktober 2022
	Anran Surip 2	Kandangan Village, Laut Tador Sub District, Batu Bara District, Sumatera Utara Province, Indonesia	3° 22' 11.710" N	99° 18' 17.266" E	1.13	1.13	20.34	No	10 Oktober 2022
	Anran Surip 3	Kandangan Village, Laut Tador Sub District, Batu Bara District, Sumatera Utara Province, Indonesia	3° 22' 13.577" N	99° 18' 18.180" E	1.14	1.14	20.52	No	10 Oktober 2022
28	Andi Manurung 1	Laut Tador Village, Laut Tador Sub District, Batu Bara District, Sumatera Utara Province, Indonesia	3° 15' 13.676" N	99° 14' 28.059" E	0.34	0.34	6.12	No	10 Oktober 2022
	Andi Manurung 2	Laut Tador Village, Laut Tador Sub District, Batu Bara District, Sumatera Utara Province, Indonesia	3° 15' 22.819" N	99° 14' 18.240" E	0.20	0.20	3.60	No	10 Oktober 2022
29	Andos Sinaga	Laut Tador Village, Laut Tador Sub District, Batu Bara District, Sumatera Utara Province, Indonesia	3° 15' 25.159" N	99° 14' 22.637" E	0.37	0.37	6.66	No	10 Oktober 2022

30	Anggi Hidayat Damanik	Tanjung Prapat Village, Laut Tador Sub District, Batu Bara District, Sumatera Utara Province, Indonesia	3° 14' 17.273" N	99° 13' 1.017" E	3.78	3.78	68.04	No	10 Oktober 2022
31	Anggi Sitohang 1	Laut Tador Village, Laut Tador Sub District, Batu Bara District, Sumatera Utara Province, Indonesia	3° 15' 16.976" N	99° 14' 6.102" E	1.78	1.78	32.04	No	10 Oktober 2022
	Anggi Sitohang 2	Laut Tador Village, Laut Tador Sub District, Batu Bara District, Sumatera Utara Province, Indonesia	3° 15' 11.234" N	99° 14' 6.034" E	0.33	0.33	5.94	No	10 Oktober 2022
32	Anik M	Tanjung Prapat Village, Laut Tador Sub District, Batu Bara District, Sumatera Utara Province, Indonesia	3° 13' 51.166" N	99° 13' 41.873" E	1.09	1.09	19.62	No	10 Oktober 2022
33	Aprido Tampubolon 1	Laut Tador Village, Laut Tador Sub District, Batu Bara District, Sumatera Utara Province, Indonesia	3° 15' 21.419" N	99° 14' 45.862" E	0.17	0.17	3.06	No	10 Oktober 2022
	Aprido Tampubolon 2	Laut Tador Village, Laut Tador Sub District, Batu Bara District, Sumatera Utara Province, Indonesia	3° 15' 16.972" N	99° 14' 10.414" E	0.76	0.76	13.68	No	10 Oktober 2022
34	Ardin Dolok Saribu 1	Laut Tador Village, Laut Tador Sub District, Batu Bara District, Sumatera Utara Province, Indonesia	3° 16' 6.545" N	99° 15' 25.787" E	0.40	0.40	7.20	No	10 Oktober 2022
	Ardin Dolok Saribu 2	Laut Tador Village, Laut Tador Sub District, Batu Bara District, Sumatera Utara Province, Indonesia	3° 16' 23.578" N	99° 15' 55.733" E	0.23	0.23	4.14	No	10 Oktober 2022
35	Ari Sangkot	Tanjung Prapat Village, Laut Tador Sub District, Batu Bara District, Sumatera Utara Province, Indonesia	3° 13' 7.897" N	99° 13' 23.104" E	0.29	0.29	5.22	No	10 Oktober 2022
36	Arif Hamdani 1	Tanjung Prapat Village, Laut Tador Sub District, Batu Bara District, Sumatera Utara Province, Indonesia	3° 13' 11.863" N	99° 13' 25.119" E	2.33	2.33	41.94	No	10 Oktober 2022
	Arif Hamdani 2	Tanjung Prapat Village, Laut Tador Sub District, Batu Bara District, Sumatera Utara Province, Indonesia	3° 13' 9.238" N	99° 13' 21.145" E	1.15	1.15	20.70	No	10 Oktober 2022
	Arif Hamdani 3	Tanjung Prapat Village, Laut Tador Sub District, Batu Bara District, Sumatera Utara Province, Indonesia	3° 14' 49.974" N	99° 13' 56.105" E	0.60	0.60	10.80	No	10 Oktober 2022
	Arif Hamdani 4	Tanjung Prapat Village, Laut Tador Sub District, Batu Bara District, Sumatera Utara Province, Indonesia	3° 13' 3.771" N	99° 13' 21.181" E	2.43	2.43	43.74	No	10 Oktober 2022
	Arif Hamdani 5	Tanjung Prapat Village, Laut Tador Sub District, Batu Bara District, Sumatera Utara Province, Indonesia	3° 13' 14.261" N	99° 13' 21.810" E	1.50	1.50	27.00	No	10 Oktober 2022
37	Ariyanto	Perkebunan Tanjung Kasau Village, Laut Tador Sub District, Batu Bara District, Sumatera Utara Province, Indonesia	3° 17' 16.210" N	99° 15' 54.195" E	0.09	0.09	1.62	No	10 Oktober 2022
38	Asni Br. Damanik	Tanjung Kasau Village, Laut Tador Sub District, Batu Bara District, Sumatera Utara Province, Indonesia	3° 17' 25.819" N	99° 15' 57.147" E	1.20	1.20	21.60	No	10 Oktober 2022
39	Asni Simbolon 1	Laut Tador Village, Laut Tador Sub District, Batu Bara District, Sumatera Utara Province, Indonesia	3° 16' 23.870" N	99° 15' 41.126" E	0.44	0.44	7.92	No	10 Oktober 2022
	Asni Simbolon 2	Perkebunan Tanjung Kasau Village, Laut Tador Sub District, Batu Bara District, Sumatera Utara Province, Indonesia	3° 17' 21.432" N	99° 16' 7.728" E	0.37	0.37	6.66	No	10 Oktober 2022
	Asni Simbolon 3	Perkebunan Tanjung Kasau Village, Laut Tador Sub District, Batu Bara District, Sumatera Utara Province, Indonesia	3° 17' 21.245" N	99° 16' 6.505" E	0.25	0.25	4.50	No	10 Oktober 2022
40	Bambang Irawan	Laut Tador Village, Laut Tador Sub District, Batu Bara District, Sumatera Utara Province, Indonesia	3° 16' 11.230" N	99° 15' 54.862" E	0.24	0.24	4.32	No	10 Oktober 2022
41	Bambang Susilo	Tanjung Prapat Village, Laut Tador Sub District, Batu Bara District, Sumatera Utara Province, Indonesia	3° 14' 26.021" N	99° 13' 18.095" E	3.00	3.00	54.00	No	10 Oktober 2022
42	Bangun Sitorus 1	Laut Tador Village, Laut Tador Sub District, Batu Bara District, Sumatera Utara Province, Indonesia	3° 16' 22.580" N	99° 15' 49.434" E	0.24	0.24	4.32	No	10 Oktober 2022
	Bangun Sitorus 2	Laut Tador Village, Laut Tador Sub District, Batu Bara District, Sumatera Utara Province, Indonesia	3° 16' 9.511" N	99° 15' 45.117" E	0.34	0.34	6.12	No	10 Oktober 2022
	Bangun Sitorus 3	Perkebunan Tanjung Kasau Village, Laut Tador Sub District, Batu Bara District, Sumatera Utara Province, Indonesia	3° 16' 57.766" N	99° 15' 57.871" E	1.35	1.35	24.30	No	10 Oktober 2022
43	Basri Manurung	Laut Tador Village, Laut Tador Sub District, Batu Bara District, Sumatera Utara Province, Indonesia	3° 15' 22.106" N	99° 14' 22.817" E	0.24	0.24	4.32	No	10 Oktober 2022
44	Basuki	Tanjung Prapat Village, Laut Tador Sub District, Batu Bara District, Sumatera Utara Province, Indonesia	3° 13' 36.743" N	99° 12' 27.346" E	0.80	0.80	14.40	No	10 Oktober 2022
45	Belman Sitanggang 1	Perkebunan Tanjung Kasau Village, Laut Tador Sub District, Batu Bara District, Sumatera Utara Province, Indonesia	3° 17' 11.425" N	99° 16' 5.513" E	1.75	1.75	31.50	No	10 Oktober 2022
	Belman Sitanggang 2	Perkebunan Tanjung Kasau Village, Laut Tador Sub District, Batu Bara District, Sumatera Utara Province, Indonesia	3° 16' 58.241" N	99° 15' 53.090" E	1.44	1.44	25.92	No	10 Oktober 2022
46	Benget	Laut Tador Village, Laut Tador Sub District, Batu Bara District, Sumatera Utara Province, Indonesia	3° 16' 59.675" N	99° 15' 47.448" E	1.54	1.54	27.72	No	10 Oktober 2022
47	Benget Sitohang 1	Laut Tador Village, Laut Tador Sub District, Batu Bara District, Sumatera Utara Province, Indonesia	3° 15' 12.309" N	99° 14' 6.091" E	0.28	0.28	5.04	No	10 Oktober 2022
	Benget Sitohang 2	Laut Tador Village, Laut Tador Sub District, Batu Bara District, Sumatera Utara Province, Indonesia	3° 15' 9.881" N	99° 14' 5.970" E	0.28	0.28	5.04	No	10 Oktober 2022
	Benget Sitohang 3	Laut Tador Village, Laut Tador Sub District, Batu Bara District, Sumatera Utara Province, Indonesia	3° 15' 0.792" N	99° 14' 23.549" E	0.24	0.24	4.32	No	10 Oktober 2022
48	Bernal Situmorang/Ronal Situmorang	Laut Tador Village, Laut Tador Sub District, Batu Bara District, Sumatera Utara Province, Indonesia	3° 15' 29.660" N	99° 14' 21.185" E	0.54	0.54	9.72	No	10 Oktober 2022
49	Bismar Rajagukguk	Laut Tador Village, Laut Tador Sub District, Batu Bara District, Sumatera Utara Province, Indonesia	3° 15' 23.101" N	99° 14' 12.462" E	0.14	0.14	2.52	No	10 Oktober 2022
50	Bonar Sagala 1	Laut Tador Village, Laut Tador Sub District, Batu Bara District, Sumatera Utara Province, Indonesia	3° 16' 5.289" N	99° 15' 48.473" E	0.33	0.33	5.94	No	10 Oktober 2022
	Bonar Sagala 2	Laut Tador Village, Laut Tador Sub District, Batu Bara District, Sumatera Utara Province, Indonesia	3° 16' 3.938" N	99° 16' 2.240" E	1.08	1.08	19.44	No	10 Oktober 2022
	Bonar Sagala 3	Laut Tador Village, Laut Tador Sub District, Batu Bara District, Sumatera Utara Province, Indonesia	3° 16' 11.696" N	99° 15' 48.521" E	1.26	1.26	22.68	No	10 Oktober 2022
	Bonar Sagala 4	Laut Tador Village, Laut Tador Sub District, Batu Bara District, Sumatera Utara Province, Indonesia	3° 16' 21.075" N	99° 15' 49.114" E	0.27	0.27	4.86	No	10 Oktober 2022
	Bonar Sagala 5	Laut Tador Village, Laut Tador Sub District, Batu Bara District, Sumatera Utara Province, Indonesia	3° 16' 22.701" N	99° 15' 45.956" E	0.47	0.47	8.46	No	10 Oktober 2022
	Bonar Sagala 6	Laut Tador Village, Laut Tador Sub District, Batu Bara District, Sumatera Utara Province, Indonesia	3° 16' 23.107" N	99° 15' 44.355" E	0.46	0.46	8.28	No	10 Oktober 2022
	Bonar Sagala 7	Perkebunan Tanjung Kasau Village, Laut Tador Sub District, Batu Bara District, Sumatera Utara Province, Indonesia	3° 17' 30.025" N	99° 16' 17.119" E	0.21	0.21	3.78	No	10 Oktober 2022
51	Boniran	Tanjung Prapat Village, Laut Tador Sub District, Batu Bara District, Sumatera Utara Province, Indonesia	3° 12' 43.606" N	99° 13' 17.527" E	0.32	0.32	5.76	No	10 Oktober 2022
52	Burhamuddin Siregar	Laut Tador Village, Laut Tador Sub District, Batu Bara District, Sumatera Utara Province, Indonesia	3° 15' 49.987" N	99° 15' 11.599" E	1.39	1.39	25.02	No	10 Oktober 2022
53	Buyung Pasaribu/Arwingsyah Pasaribu	Laut Tador Village, Laut Tador Sub District, Batu Bara District, Sumatera Utara Province, Indonesia	3° 16' 42.997" N	99° 15' 57.236" E	0.43	0.43	7.74	No	10 Oktober 2022
54	Carles Siadari	Laut Tador Village, Laut Tador Sub District, Batu Bara District, Sumatera Utara Province, Indonesia	3° 16' 5.974" N	99° 15' 30.001" E	1.26	1.26	22.68	No	10 Oktober 2022
55	Chairul Wahdi Siregar	Laut Tador Village, Laut Tador Sub District, Batu Bara District, Sumatera Utara Province, Indonesia	3° 15' 57.872" N	99° 14' 59.828" E	1.16	1.16	20.88	No	10 Oktober 2022
56	Cosmos	Tanjung Prapat Village, Laut Tador Sub District, Batu Bara District, Sumatera Utara Province, Indonesia	3° 16' 42.810" N	99° 15' 48.991" E	0.34	0.34	6.12	No	10 Oktober 2022
57	Dalli Sudrajat	Laut Tador Village, Laut Tador Sub District, Batu Bara District, Sumatera Utara Province, Indonesia	3° 15' 37.377" N	99° 13' 40.518" E	2.28	2.28	41.04	No	10 Oktober 2022
58	Darus Rambe	Laut Tador Village, Laut Tador Sub District, Batu Bara District, Sumatera Utara Province, Indonesia	3° 16' 11.069" N	99° 15' 26.119" E	0.60	0.60	10.80	No	10 Oktober 2022

59	Darwin 1	Perkebunan Tanjung Kasau Village, Laut Tador Sub District, Batu Bara District, Sumatera Utara Province, Indonesia	3° 17' 15.806" N	99° 15' 55.089" E	0.13	0.13	2.34	No	10 Oktober 2022
	Darwin 2	Perkebunan Tanjung Kasau Village, Laut Tador Sub District, Batu Bara District, Sumatera Utara Province, Indonesia	3° 17' 13.010" N	99° 16' 1.491" E	0.16	0.16	2.88	No	10 Oktober 2022
	Darwin 3	Perkebunan Tanjung Kasau Village, Laut Tador Sub District, Batu Bara District, Sumatera Utara Province, Indonesia	3° 17' 12.637" N	99° 16' 2.585" E	0.12	0.12	2.16	No	10 Oktober 2022
60	Darwis Saragih 1	Kandangan Village, Laut Tador Sub District, Batu Bara District, Sumatera Utara Province, Indonesia	3° 22' 38.201" N	99° 20' 9.499" E	2.35	2.35	42.30	No	10 Oktober 2022
	Darwis Saragih 2	Kandangan Village, Laut Tador Sub District, Batu Bara District, Sumatera Utara Province, Indonesia	3° 22' 31.761" N	99° 19' 52.954" E	1.73	1.73	31.14	No	10 Oktober 2022
	Darwis Saragih 3	Kandangan Village, Laut Tador Sub District, Batu Bara District, Sumatera Utara Province, Indonesia	3° 22' 24.640" N	99° 19' 36.849" E	1.51	1.51	27.18	No	10 Oktober 2022
	Darwis Saragih 4	Kandangan Village, Laut Tador Sub District, Batu Bara District, Sumatera Utara Province, Indonesia	3° 22' 20.325" N	99° 19' 26.583" E	2.14	2.14	38.52	No	10 Oktober 2022
61	Dedi Banisman	Perkebunan Tanjung Kasau Village, Laut Tador Sub District, Batu Bara District, Sumatera Utara Province, Indonesia	3° 17' 18.699" N	99° 15' 58.139" E	0.11	0.11	1.98	No	10 Oktober 2022
62	Dedy Syahputra	Tanjung Kasau Village, Laut Tador Sub District, Batu Bara District, Sumatera Utara Province, Indonesia	3° 17' 30.244" N	99° 15' 59.207" E	0.48	0.48	8.64	No	10 Oktober 2022
63	Desberia Simbolon 1	Laut Tador Village, Laut Tador Sub District, Batu Bara District, Sumatera Utara Province, Indonesia	3° 15' 27.081" N	99° 14' 35.539" E	0.46	0.46	8.28	No	10 Oktober 2022
	Desberia Simbolon 2	Laut Tador Village, Laut Tador Sub District, Batu Bara District, Sumatera Utara Province, Indonesia	3° 15' 19.959" N	99° 14' 40.938" E	0.23	0.23	4.14	No	10 Oktober 2022
64	Dewan Harahap 1	Laut Tador Village, Laut Tador Sub District, Batu Bara District, Sumatera Utara Province, Indonesia	3° 15' 42.849" N	99° 15' 22.698" E	0.71	0.71	12.78	No	10 Oktober 2022
	Dewan Harahap 2	Laut Tador Village, Laut Tador Sub District, Batu Bara District, Sumatera Utara Province, Indonesia	3° 15' 46.301" N	99° 15' 20.372" E	2.13	2.13	38.34	No	10 Oktober 2022
65	Dioma Simbolon	Laut Tador Village, Laut Tador Sub District, Batu Bara District, Sumatera Utara Province, Indonesia	3° 15' 12.861" N	99° 14' 16.913" E	0.22	0.22	3.96	No	10 Oktober 2022
66	Dodi Simamora	Laut Tador Village, Laut Tador Sub District, Batu Bara District, Sumatera Utara Province, Indonesia	3° 17' 15.513" N	99° 15' 19.075" E	0.16	0.16	2.88	No	10 Oktober 2022
67	Dogor Simbolon	Laut Tador Village, Laut Tador Sub District, Batu Bara District, Sumatera Utara Province, Indonesia	3° 15' 28.345" N	99° 14' 34.171" E	0.28	0.28	5.04	No	10 Oktober 2022
68	Dogor Sinaga 1/Rusdiana Sinaga 1	Laut Tador Village, Laut Tador Sub District, Batu Bara District, Sumatera Utara Province, Indonesia	3° 15' 12.466" N	99° 14' 26.025" E	0.28	0.28	5.04	No	10 Oktober 2022
	Dogor Sinaga 2/Rusdiana Sinaga 2	Laut Tador Village, Laut Tador Sub District, Batu Bara District, Sumatera Utara Province, Indonesia	3° 15' 23.928" N	99° 14' 30.476" E	0.25	0.25	4.50	No	10 Oktober 2022
69	Dorsana Rajagukguk	Laut Tador Village, Laut Tador Sub District, Batu Bara District, Sumatera Utara Province, Indonesia	3° 15' 22.513" N	99° 14' 12.820" E	0.19	0.19	3.42	No	10 Oktober 2022
70	Ebona Simaremare/Ebon Ebona Sima	Laut Tador Village, Laut Tador Sub District, Batu Bara District, Sumatera Utara Province, Indonesia	3° 15' 20.679" N	99° 14' 35.013" E	0.97	0.97	17.46	No	10 Oktober 2022
71	Edi 1	Tanjung Kasau Village, Laut Tador Sub District, Batu Bara District, Sumatera Utara Province, Indonesia	3° 16' 51.960" N	99° 15' 47.549" E	0.50	0.50	9.00	No	10 Oktober 2022
	Edi 2	Tanjung Kasau Village, Laut Tador Sub District, Batu Bara District, Sumatera Utara Province, Indonesia	3° 16' 48.450" N	99° 15' 50.135" E	1.01	1.01	18.18	No	10 Oktober 2022
72	Edi Sibuea 1	Laut Tador Village, Laut Tador Sub District, Batu Bara District, Sumatera Utara Province, Indonesia	3° 15' 54.867" N	99° 15' 40.463" E	0.79	0.79	14.22	No	10 Oktober 2022
	Edi Sibuea 2	Perkebunan Tanjung Kasau Village, Laut Tador Sub District, Batu Bara District, Sumatera Utara Province, Indonesia	3° 17' 9.395" N	99° 15' 53.041" E	1.10	1.10	19.80	No	10 Oktober 2022
73	Edi Suryono 1	Kandangan Village, Laut Tador Sub District, Batu Bara District, Sumatera Utara Province, Indonesia	3° 22' 57.619" N	99° 19' 25.946" E	4.35	4.35	78.30	No	10 Oktober 2022
	Edi Suryono 2	Kandangan Village, Laut Tador Sub District, Batu Bara District, Sumatera Utara Province, Indonesia	3° 22' 21.525" N	99° 19' 59.852" E	0.86	0.86	15.48	No	10 Oktober 2022
	Edi Suryono 3	Kandangan Village, Laut Tador Sub District, Batu Bara District, Sumatera Utara Province, Indonesia	3° 22' 40.682" N	99° 19' 52.257" E	0.35	0.35	6.30	No	10 Oktober 2022
74	Elman Sirait	Tanjung Prapat Village, Laut Tador Sub District, Batu Bara District, Sumatera Utara Province, Indonesia	3° 14' 14.676" N	99° 13' 19.169" E	1.50	1.50	27.00	No	10 Oktober 2022
75	Elpina Siregar 1	Laut Tador Village, Laut Tador Sub District, Batu Bara District, Sumatera Utara Province, Indonesia	3° 16' 26.318" N	99° 15' 45.576" E	0.27	0.27	4.86	No	10 Oktober 2022
	Elpina Siregar 2	Perkebunan Tanjung Kasau Village, Laut Tador Sub District, Batu Bara District, Sumatera Utara Province, Indonesia	3° 17' 27.387" N	99° 16' 23.653" E	0.65	0.65	11.70	No	10 Oktober 2022
76	Eman Didi 1	Laut Tador Village, Laut Tador Sub District, Batu Bara District, Sumatera Utara Province, Indonesia	3° 16' 0.169" N	99° 15' 14.697" E	0.58	0.58	10.44	No	10 Oktober 2022
	Eman Didi 2	Perkebunan Tanjung Kasau Village, Laut Tador Sub District, Batu Bara District, Sumatera Utara Province, Indonesia	3° 17' 14.856" N	99° 15' 55.630" E	0.07	0.07	1.26	No	10 Oktober 2022
77	Erwin	Tanjung Prapat Village, Laut Tador Sub District, Batu Bara District, Sumatera Utara Province, Indonesia	3° 13' 11.045" N	99° 12' 56.451" E	0.19	0.19	3.42	No	10 Oktober 2022
78	Erwin Purba 1	Laut Tador Village, Laut Tador Sub District, Batu Bara District, Sumatera Utara Province, Indonesia	3° 15' 20.768" N	99° 14' 29.039" E	0.27	0.27	4.86	No	10 Oktober 2022
	Erwin Purba 2	Laut Tador Village, Laut Tador Sub District, Batu Bara District, Sumatera Utara Province, Indonesia	3° 15' 29.957" N	99° 14' 22.172" E	0.18	0.18	3.24	No	10 Oktober 2022
79	Esrone Simaremare 1	Laut Tador Village, Laut Tador Sub District, Batu Bara District, Sumatera Utara Province, Indonesia	3° 15' 18.744" N	99° 14' 44.487" E	0.43	0.43	7.74	No	10 Oktober 2022
	Esrone Simaremare 2	Laut Tador Village, Laut Tador Sub District, Batu Bara District, Sumatera Utara Province, Indonesia	3° 15' 22.599" N	99° 14' 30.405" E	0.24	0.24	4.32	No	10 Oktober 2022
	Esrone Simaremare 3	Laut Tador Village, Laut Tador Sub District, Batu Bara District, Sumatera Utara Province, Indonesia	3° 15' 12.811" N	99° 14' 15.555" E	0.40	0.40	7.20	No	10 Oktober 2022
	Esrone Simaremare 4	Laut Tador Village, Laut Tador Sub District, Batu Bara District, Sumatera Utara Province, Indonesia	3° 15' 26.848" N	99° 14' 25.884" E	0.28	0.28	5.04	No	10 Oktober 2022
80	Fahmi	Laut Tador Village, Laut Tador Sub District, Batu Bara District, Sumatera Utara Province, Indonesia	3° 14' 44.575" N	99° 13' 59.348" E	0.61	0.61	10.98	No	10 Oktober 2022
81	Franciscus Simbolon 1	Laut Tador Village, Laut Tador Sub District, Batu Bara District, Sumatera Utara Province, Indonesia	3° 15' 19.571" N	99° 14' 19.949" E	0.21	0.21	3.78	No	10 Oktober 2022
	Franciscus Simbolon 2	Laut Tador Village, Laut Tador Sub District, Batu Bara District, Sumatera Utara Province, Indonesia	3° 15' 42.006" N	99° 14' 37.875" E	0.70	0.70	12.60	No	10 Oktober 2022
82	Frengky Damanik	Laut Tador Village, Laut Tador Sub District, Batu Bara District, Sumatera Utara Province, Indonesia	3° 16' 49.946" N	99° 15' 55.049" E	0.42	0.42	7.56	No	10 Oktober 2022
83	Gelpit Siburan 1	Laut Tador Village, Laut Tador Sub District, Batu Bara District, Sumatera Utara Province, Indonesia	3° 15' 13.486" N	99° 14' 25.029" E	0.27	0.27	4.86	No	10 Oktober 2022
	Gelpit Siburan 2	Laut Tador Village, Laut Tador Sub District, Batu Bara District, Sumatera Utara Province, Indonesia	3° 15' 32.467" N	99° 14' 40.835" E	0.32	0.32	5.76	No	10 Oktober 2022
84	Ginem 1	Tanjung Prapat Village, Laut Tador Sub District, Batu Bara District, Sumatera Utara Province, Indonesia	3° 13' 56.343" N	99° 12' 49.215" E	0.39	0.39	7.02	No	10 Oktober 2022
	Ginem 2	Tanjung Prapat Village, Laut Tador Sub District, Batu Bara District, Sumatera Utara Province, Indonesia	3° 13' 55.918" N	99° 12' 51.354" E	0.07	0.07	1.26	No	10 Oktober 2022
85	Guten Sijabat 1	Tanjung Prapat Village, Laut Tador Sub District, Batu Bara District, Sumatera Utara Province, Indonesia	3° 13' 49.698" N	99° 13' 24.714" E	0.41	0.41	7.38	No	10 Oktober 2022
	Guten Sijabat 2	Tanjung Prapat Village, Laut Tador Sub District, Batu Bara District, Sumatera Utara Province, Indonesia	3° 13' 55.647" N	99° 13' 35.298" E	0.42	0.42	7.56	No	10 Oktober 2022

86	Haji Sudirman	Laut Tador Village, Laut Tador Sub District, Batu Bara District, Sumatera Utara Province, Indonesia	3° 17' 0.291" N	99° 15' 0.581" E	0.82	0.82	14.76	No	10 Oktober 2022
87	Harapan Purbu	Laut Tador Village, Laut Tador Sub District, Batu Bara District, Sumatera Utara Province, Indonesia	3° 15' 16.891" N	99° 14' 1.683" E	0.26	0.26	4.68	No	10 Oktober 2022
88	Heldrita Sibarani	Laut Tador Village, Laut Tador Sub District, Batu Bara District, Sumatera Utara Province, Indonesia	3° 15' 9.880" N	99° 14' 10.773" E	0.29	0.29	5.22	No	10 Oktober 2022
89	Helmi Sirait	Tanjung Prapat Village, Laut Tador Sub District, Batu Bara District, Sumatera Utara Province, Indonesia	3° 13' 28.097" N	99° 13' 9.471" E	0.70	0.70	12.60	No	10 Oktober 2022
90	Henry 1	Tanjung Prapat Village, Laut Tador Sub District, Batu Bara District, Sumatera Utara Province, Indonesia	3° 13' 17.446" N	99° 13' 20.220" E	0.14	0.14	2.52	No	10 Oktober 2022
	Henry 2	Laut Tador Village, Laut Tador Sub District, Batu Bara District, Sumatera Utara Province, Indonesia	3° 14' 42.164" N	99° 13' 55.718" E	0.21	0.21	3.78	No	10 Oktober 2022
91	Herbin Panggabean	Tanjung Prapat Village, Laut Tador Sub District, Batu Bara District, Sumatera Utara Province, Indonesia	3° 14' 1.600" N	99° 13' 45.546" E	0.72	0.72	12.96	No	10 Oktober 2022
92	Heri	Kandangan Village, Laut Tador Sub District, Batu Bara District, Sumatera Utara Province, Indonesia	3° 21' 3.302" N	99° 19' 35.137" E	0.57	0.57	10.26	No	10 Oktober 2022
93	Herliadi	Laut Tador Village, Laut Tador Sub District, Batu Bara District, Sumatera Utara Province, Indonesia	3° 15' 46.382" N	99° 15' 14.413" E	0.71	0.71	12.78	No	10 Oktober 2022
94	Herlina	Tanjung Prapat Village, Laut Tador Sub District, Batu Bara District, Sumatera Utara Province, Indonesia	3° 13' 50.979" N	99° 13' 6.521" E	0.55	0.55	9.90	No	10 Oktober 2022
95	Hermansyah	Tanjung Prapat Village, Laut Tador Sub District, Batu Bara District, Sumatera Utara Province, Indonesia	3° 14' 13.476" N	99° 13' 47.813" E	1.77	1.77	31.86	No	10 Oktober 2022
96	Hidayat Saiful	Kandangan Village, Laut Tador Sub District, Batu Bara District, Sumatera Utara Province, Indonesia	3° 21' 58.108" N	99° 19' 51.869" E	0.40	0.40	7.20	No	10 Oktober 2022
97	HKBP	Laut Tador Village, Laut Tador Sub District, Batu Bara District, Sumatera Utara Province, Indonesia	3° 15' 16.069" N	99° 14' 30.956" E	0.50	0.50	9.00	No	10 Oktober 2022
98	Hollan Panggabean	Tanjung Kasau Village, Laut Tador Sub District, Batu Bara District, Sumatera Utara Province, Indonesia	3° 16' 49.248" N	99° 15' 42.773" E	1.00	1.00	18.00	No	10 Oktober 2022
99	Holmaida Sijabat 1	Laut Tador Village, Laut Tador Sub District, Batu Bara District, Sumatera Utara Province, Indonesia	3° 16' 11.240" N	99° 16' 1.110" E	0.44	0.44	7.92	No	10 Oktober 2022
	Holmaida Sijabat 2	Perkebunan Tanjung Kasau Village, Laut Tador Sub District, Batu Bara District, Sumatera Utara Province, Indonesia	3° 17' 16.767" N	99° 16' 8.692" E	0.76	0.76	13.68	No	10 Oktober 2022
100	Holman Napitu	Tanjung Kasau Village, Laut Tador Sub District, Batu Bara District, Sumatera Utara Province, Indonesia	3° 17' 24.759" N	99° 16' 17.286" E	1.00	1.00	18.00	No	10 Oktober 2022
101	Huban Hasibuan 1	Tanjung Prapat Village, Laut Tador Sub District, Batu Bara District, Sumatera Utara Province, Indonesia	3° 13' 22.991" N	99° 13' 17.625" E	0.66	0.66	11.88	No	10 Oktober 2022
	Huban Hasibuan 2	Kandangan Village, Laut Tador Sub District, Batu Bara District, Sumatera Utara Province, Indonesia	3° 21' 53.922" N	99° 18' 29.437" E	1.29	1.29	23.22	No	10 Oktober 2022
102	Idaham Rahmad Dermawan	Kandangan Village, Laut Tador Sub District, Batu Bara District, Sumatera Utara Province, Indonesia	3° 22' 15.615" N	99° 18' 18.840" E	1.18	1.18	21.24	No	10 Oktober 2022
103	Ilham 1	Laut Tador Village, Laut Tador Sub District, Batu Bara District, Sumatera Utara Province, Indonesia	3° 17' 6.835" N	99° 15' 12.634" E	0.30	0.30	5.40	No	10 Oktober 2022
	Ilham 2	Laut Tador Village, Laut Tador Sub District, Batu Bara District, Sumatera Utara Province, Indonesia	3° 17' 6.776" N	99° 15' 10.161" E	0.14	0.14	2.52	No	10 Oktober 2022
104	Indra Lubis	Tanjung Kasau Village, Laut Tador Sub District, Batu Bara District, Sumatera Utara Province, Indonesia	3° 17' 25.126" N	99° 15' 37.733" E	0.92	0.92	16.56	No	10 Oktober 2022
105	Irwan Dani	Kandangan Village, Laut Tador Sub District, Batu Bara District, Sumatera Utara Province, Indonesia	3° 22' 17.003" N	99° 18' 44.289" E	1.45	1.45	26.10	No	10 Oktober 2022
106	Iskandar	Laut Tador Village, Laut Tador Sub District, Batu Bara District, Sumatera Utara Province, Indonesia	3° 15' 58.088" N	99° 15' 9.100" E	0.42	0.42	7.56	No	10 Oktober 2022
107	Ismail Barasa 1	Laut Tador Village, Laut Tador Sub District, Batu Bara District, Sumatera Utara Province, Indonesia	3° 16' 27.434" N	99° 15' 41.771" E	0.62	0.62	11.16	No	10 Oktober 2022
	Ismail Barasa 2	Laut Tador Village, Laut Tador Sub District, Batu Bara District, Sumatera Utara Province, Indonesia	3° 16' 23.434" N	99° 15' 42.715" E	0.43	0.43	7.74	No	10 Oktober 2022
108	Isnandar	Laut Tador Village, Laut Tador Sub District, Batu Bara District, Sumatera Utara Province, Indonesia	3° 15' 58.105" N	99° 15' 12.538" E	0.29	0.29	5.22	No	10 Oktober 2022
109	Jaeran Simbolon 1	Laut Tador Village, Laut Tador Sub District, Batu Bara District, Sumatera Utara Province, Indonesia	3° 15' 1.399" N	99° 14' 28.951" E	0.49	0.49	8.82	No	10 Oktober 2022
	Jaeran Simbolon 2	Laut Tador Village, Laut Tador Sub District, Batu Bara District, Sumatera Utara Province, Indonesia	3° 15' 10.644" N	99° 14' 29.996" E	0.29	0.29	5.22	No	10 Oktober 2022
	Jaeran Simbolon 3	Laut Tador Village, Laut Tador Sub District, Batu Bara District, Sumatera Utara Province, Indonesia	3° 14' 56.292" N	99° 14' 28.884" E	0.36	0.36	6.48	No	10 Oktober 2022
	Jaeran Simbolon 4	Laut Tador Village, Laut Tador Sub District, Batu Bara District, Sumatera Utara Province, Indonesia	3° 15' 22.215" N	99° 14' 18.872" E	0.13	0.13	2.34	No	10 Oktober 2022
110	Jakiah	Kandangan Village, Laut Tador Sub District, Batu Bara District, Sumatera Utara Province, Indonesia	3° 21' 53.092" N	99° 18' 32.513" E	1.59	1.59	28.62	No	10 Oktober 2022
111	Jamarelang Manurung 1	Laut Tador Village, Laut Tador Sub District, Batu Bara District, Sumatera Utara Province, Indonesia	3° 15' 49.041" N	99° 15' 42.240" E	1.25	1.25	22.50	No	10 Oktober 2022
	Jamarelang Manurung 2	Laut Tador Village, Laut Tador Sub District, Batu Bara District, Sumatera Utara Province, Indonesia	3° 16' 36.710" N	99° 15' 50.885" E	0.64	0.64	11.52	No	10 Oktober 2022
112	Jamarik	Kandangan Village, Laut Tador Sub District, Batu Bara District, Sumatera Utara Province, Indonesia	3° 22' 10.085" N	99° 19' 36.188" E	1.70	1.70	30.60	No	10 Oktober 2022
113	Jamat 1	Tanjung Prapat Village, Laut Tador Sub District, Batu Bara District, Sumatera Utara Province, Indonesia	3° 13' 10.936" N	99° 12' 45.883" E	0.17	0.17	3.06	No	10 Oktober 2022
	Jamat 2	Tanjung Prapat Village, Laut Tador Sub District, Batu Bara District, Sumatera Utara Province, Indonesia	3° 14' 2.652" N	99° 12' 50.507" E	0.98	0.98	17.64	No	10 Oktober 2022
	Jamat 3	Tanjung Prapat Village, Laut Tador Sub District, Batu Bara District, Sumatera Utara Province, Indonesia	3° 12' 45.562" N	99° 13' 17.988" E	0.16	0.16	2.88	No	10 Oktober 2022
	Jamat 4	Tanjung Prapat Village, Laut Tador Sub District, Batu Bara District, Sumatera Utara Province, Indonesia	3° 12' 46.658" N	99° 13' 19.102" E	0.27	0.27	4.86	No	10 Oktober 2022
114	Jamsir Sihohang	Laut Tador Village, Laut Tador Sub District, Batu Bara District, Sumatera Utara Province, Indonesia	3° 15' 19.825" N	99° 14' 48.070" E	0.24	0.24	4.32	No	10 Oktober 2022
115	Janpri Tampubolon	Laut Tador Village, Laut Tador Sub District, Batu Bara District, Sumatera Utara Province, Indonesia	3° 15' 16.113" N	99° 14' 37.557" E	0.31	0.31	5.58	No	10 Oktober 2022
116	Jansen Manurung 1	Laut Tador Village, Laut Tador Sub District, Batu Bara District, Sumatera Utara Province, Indonesia	3° 15' 7.035" N	99° 14' 27.920" E	0.38	0.38	6.84	No	10 Oktober 2022
	Jansen Manurung 2	Laut Tador Village, Laut Tador Sub District, Batu Bara District, Sumatera Utara Province, Indonesia	3° 15' 17.111" N	99° 14' 21.226" E	0.42	0.42	7.56	No	10 Oktober 2022
117	Japarlin Manalu	Laut Tador Village, Laut Tador Sub District, Batu Bara District, Sumatera Utara Province, Indonesia	3° 15' 35.621" N	99° 14' 44.470" E	2.30	2.30	41.40	No	10 Oktober 2022
118	Jauko Samsir 1	Laut Tador Village, Laut Tador Sub District, Batu Bara District, Sumatera Utara Province, Indonesia	3° 16' 6.942" N	99° 15' 27.231" E	0.25	0.25	4.50	No	10 Oktober 2022
	Jauko Samsir 2	Laut Tador Village, Laut Tador Sub District, Batu Bara District, Sumatera Utara Province, Indonesia	3° 16' 20.960" N	99° 15' 52.438" E	0.51	0.51	9.18	No	10 Oktober 2022
	Jauko Samsir 3	Laut Tador Village, Laut Tador Sub District, Batu Bara District, Sumatera Utara Province, Indonesia	3° 16' 24.276" N	99° 15' 39.731" E	0.33	0.33	5.94	No	10 Oktober 2022
	Jauko Samsir 4	Laut Tador Village, Laut Tador Sub District, Batu Bara District, Sumatera Utara Province, Indonesia	3° 16' 16.392" N	99° 15' 38.290" E	0.25	0.25	4.50	No	10 Oktober 2022
	Jauko Samsir 5	Laut Tador Village, Laut Tador Sub District, Batu Bara District, Sumatera Utara Province, Indonesia	3° 16' 8.711" N	99° 15' 41.520" E	0.18	0.18	3.24	No	10 Oktober 2022
	Jauko Samsir 6	Laut Tador Village, Laut Tador Sub District, Batu Bara District, Sumatera Utara Province, Indonesia	3° 16' 52.124" N	99° 15' 37.898" E	0.93	0.93	16.74	No	10 Oktober 2022
119	Jhon Munif 1	Laut Tador Village, Laut Tador Sub District, Batu Bara District, Sumatera Utara Province, Indonesia	3° 17' 27.439" N	99° 15' 12.669" E	0.48	0.48	8.64	No	10 Oktober 2022

	Jhon Munif 2	Laut Tador Village, Laut Tador Sub District, Batu Bara District, Sumatera Utara Province, Indonesia	3° 17' 25.045" N	99° 15' 15.563" E	0.82	0.82	14.76	No	10 Oktober 2022
120	Jhondris Siburian 1	Laut Tador Village, Laut Tador Sub District, Batu Bara District, Sumatera Utara Province, Indonesia	3° 15' 8.873" N	99° 14' 23.297" E	0.55	0.55	9.90	No	10 Oktober 2022
	Jhondris Siburian 2	Laut Tador Village, Laut Tador Sub District, Batu Bara District, Sumatera Utara Province, Indonesia	3° 15' 29.236" N	99° 14' 43.498" E	0.44	0.44	7.92	No	10 Oktober 2022
121	Jhonn Harahap	Laut Tador Village, Laut Tador Sub District, Batu Bara District, Sumatera Utara Province, Indonesia	3° 15' 37.271" N	99° 15' 34.258" E	0.78	0.78	14.04	No	10 Oktober 2022
122	Joko Susilo	Laut Tador Village, Laut Tador Sub District, Batu Bara District, Sumatera Utara Province, Indonesia	3° 15' 48.884" N	99° 15' 29.135" E	0.42	0.42	7.56	No	10 Oktober 2022
123	Jordan Marbun 1	Laut Tador Village, Laut Tador Sub District, Batu Bara District, Sumatera Utara Province, Indonesia	3° 16' 2.795" N	99° 15' 46.575" E	0.15	0.15	2.70	No	10 Oktober 2022
	Jordan Marbun 2	Laut Tador Village, Laut Tador Sub District, Batu Bara District, Sumatera Utara Province, Indonesia	3° 16' 0.116" N	99° 15' 43.974" E	0.71	0.71	12.78	No	10 Oktober 2022
	Jordan Marbun 3	Laut Tador Village, Laut Tador Sub District, Batu Bara District, Sumatera Utara Province, Indonesia	3° 15' 57.186" N	99° 15' 38.996" E	0.26	0.26	4.68	No	10 Oktober 2022
	Jordan Marbun 4	Laut Tador Village, Laut Tador Sub District, Batu Bara District, Sumatera Utara Province, Indonesia	3° 16' 15.761" N	99° 15' 45.447" E	0.23	0.23	4.14	No	10 Oktober 2022
124	Jubaida	Kandangan Village, Laut Tador Sub District, Batu Bara District, Sumatera Utara Province, Indonesia	3° 21' 10.308" N	99° 19' 2.371" E	0.67	0.67	12.06	No	10 Oktober 2022
125	Juddin Tampubolon 1	Laut Tador Village, Laut Tador Sub District, Batu Bara District, Sumatera Utara Province, Indonesia	3° 15' 23.443" N	99° 14' 31.883" E	0.22	0.22	3.96	No	10 Oktober 2022
	Juddin Tampubolon 2	Laut Tador Village, Laut Tador Sub District, Batu Bara District, Sumatera Utara Province, Indonesia	3° 15' 25.357" N	99° 13' 50.620" E	0.61	0.61	10.98	No	10 Oktober 2022
126	Juhari	Tanjung Prapat Village, Laut Tador Sub District, Batu Bara District, Sumatera Utara Province, Indonesia	3° 13' 5.962" N	99° 13' 24.948" E	0.07	0.07	1.26	No	10 Oktober 2022
127	Jujur Panggabean	Tanjung Prapat Village, Laut Tador Sub District, Batu Bara District, Sumatera Utara Province, Indonesia	3° 16' 41.843" N	99° 15' 42.731" E	0.88	0.88	15.84	No	10 Oktober 2022
128	Jujur Simbolon	Laut Tador Village, Laut Tador Sub District, Batu Bara District, Sumatera Utara Province, Indonesia	3° 15' 29.324" N	99° 14' 32.623" E	0.64	0.64	11.52	No	10 Oktober 2022
129	Juliani	Kandangan Village, Laut Tador Sub District, Batu Bara District, Sumatera Utara Province, Indonesia	3° 22' 43.782" N	99° 18' 52.449" E	1.09	1.09	19.62	No	10 Oktober 2022
130	Jumadi	Tanjung Prapat Village, Laut Tador Sub District, Batu Bara District, Sumatera Utara Province, Indonesia	3° 13' 17.587" N	99° 13' 6.520" E	0.67	0.67	12.06	No	10 Oktober 2022
131	Jumain 1	Laut Tador Village, Laut Tador Sub District, Batu Bara District, Sumatera Utara Province, Indonesia	3° 16' 7.312" N	99° 15' 15.156" E	0.56	0.56	10.08	No	10 Oktober 2022
	Jumain 2	Laut Tador Village, Laut Tador Sub District, Batu Bara District, Sumatera Utara Province, Indonesia	3° 16' 4.364" N	99° 15' 15.966" E	0.16	0.16	2.88	No	10 Oktober 2022
132	Jumingan 1	Tanjung Prapat Village, Laut Tador Sub District, Batu Bara District, Sumatera Utara Province, Indonesia	3° 13' 41.893" N	99° 12' 45.959" E	1.66	1.66	29.88	No	10 Oktober 2022
	Jumingan 2	Tanjung Prapat Village, Laut Tador Sub District, Batu Bara District, Sumatera Utara Province, Indonesia	3° 13' 43.387" N	99° 13' 18.867" E	1.07	1.07	19.26	No	10 Oktober 2022
133	Juniater Simbolon 1	Laut Tador Village, Laut Tador Sub District, Batu Bara District, Sumatera Utara Province, Indonesia	3° 15' 13.545" N	99° 14' 5.448" E	0.25	0.25	4.50	No	10 Oktober 2022
	Juniater Simbolon 2	Laut Tador Village, Laut Tador Sub District, Batu Bara District, Sumatera Utara Province, Indonesia	3° 15' 14.847" N	99° 14' 9.468" E	0.88	0.88	15.84	No	10 Oktober 2022
134	Juriah Rambe 1	Tanjung Prapat Village, Laut Tador Sub District, Batu Bara District, Sumatera Utara Province, Indonesia	3° 13' 42.224" N	99° 13' 9.521" E	0.59	0.59	10.62	No	10 Oktober 2022
	Juriah Rambe 2	Tanjung Prapat Village, Laut Tador Sub District, Batu Bara District, Sumatera Utara Province, Indonesia	3° 13' 26.474" N	99° 13' 1.963" E	0.49	0.49	8.82	No	10 Oktober 2022
135	Kael Tampubolon 1	perkebunan Tanjung Kasau Village, Laut Tador Sub District, Batu Bara District, Sumatera Utara Province, Indonesia	3° 15' 12.885" N	99° 14' 10.235" E	0.40	0.40	7.20	No	10 Oktober 2022
	Kael Tampubolon 2	Laut Tador Village, Laut Tador Sub District, Batu Bara District, Sumatera Utara Province, Indonesia	3° 15' 16.684" N	99° 14' 35.970" E	0.43	0.43	7.74	No	10 Oktober 2022
136	Kamida	Kandangan Village, Laut Tador Sub District, Batu Bara District, Sumatera Utara Province, Indonesia	3° 21' 39.516" N	99° 18' 24.789" E	0.26	0.26	4.68	No	10 Oktober 2022
137	Kamsia Samosir 1	Laut Tador Village, Laut Tador Sub District, Batu Bara District, Sumatera Utara Province, Indonesia	3° 16' 21.436" N	99° 15' 50.895" E	0.47	0.47	8.46	No	10 Oktober 2022
	Kamsia Samosir 2	Laut Tador Village, Laut Tador Sub District, Batu Bara District, Sumatera Utara Province, Indonesia	3° 16' 4.450" N	99° 15' 40.322" E	0.16	0.16	2.88	No	10 Oktober 2022
138	Karmi 1	Tanjung Prapat Village, Laut Tador Sub District, Batu Bara District, Sumatera Utara Province, Indonesia	3° 13' 55.390" N	99° 13' 39.395" E	0.55	0.55	9.90	No	10 Oktober 2022
	Karmi 2	Tanjung Prapat Village, Laut Tador Sub District, Batu Bara District, Sumatera Utara Province, Indonesia	3° 12' 59.017" N	99° 13' 5.469" E	0.23	0.23	4.14	No	10 Oktober 2022
139	Karnadi	Laut Tador Village, Laut Tador Sub District, Batu Bara District, Sumatera Utara Province, Indonesia	3° 16' 17.180" N	99° 15' 55.069" E	0.39	0.39	7.02	No	10 Oktober 2022
140	Kartiman	Laut Tador Village, Laut Tador Sub District, Batu Bara District, Sumatera Utara Province, Indonesia	3° 15' 58.090" N	99° 16' 2.324" E	0.23	0.23	4.14	No	10 Oktober 2022
141	Kasiani	Laut Tador Village, Laut Tador Sub District, Batu Bara District, Sumatera Utara Province, Indonesia	3° 16' 0.983" N	99° 15' 20.886" E	0.33	0.33	5.94	No	10 Oktober 2022
142	Kasiran Pranata	Kandangan Village, Laut Tador Sub District, Batu Bara District, Sumatera Utara Province, Indonesia	3° 21' 10.676" N	99° 19' 23.150" E	2.32	2.32	41.76	No	10 Oktober 2022
143	Kasmin Sinaga	Laut Tador Village, Laut Tador Sub District, Batu Bara District, Sumatera Utara Province, Indonesia	3° 16' 38.916" N	99° 15' 40.433" E	1.27	1.27	22.86	No	10 Oktober 2022
144	Kasmina Khaidir 1	Laut Tador Village, Laut Tador Sub District, Batu Bara District, Sumatera Utara Province, Indonesia	3° 16' 2.986" N	99° 15' 16.075" E	0.30	0.30	5.40	No	10 Oktober 2022
	Kasmina Khaidir 2	Laut Tador Village, Laut Tador Sub District, Batu Bara District, Sumatera Utara Province, Indonesia	3° 15' 56.176" N	99° 15' 12.781" E	0.22	0.22	3.96	No	10 Oktober 2022
	Kasmina Khaidir 3	Laut Tador Village, Laut Tador Sub District, Batu Bara District, Sumatera Utara Province, Indonesia	3° 15' 54.155" N	99° 15' 21.849" E	0.26	0.26	4.68	No	10 Oktober 2022
145	Kasta Warnita Sinaga	Laut Tador Village, Laut Tador Sub District, Batu Bara District, Sumatera Utara Province, Indonesia	3° 14' 50.583" N	99° 14' 15.192" E	0.24	0.24	4.32	No	10 Oktober 2022
146	Khairul Wahdi Siregar 1	Laut Tador Village, Laut Tador Sub District, Batu Bara District, Sumatera Utara Province, Indonesia	3° 15' 52.807" N	99° 15' 34.891" E	0.60	0.60	10.80	No	10 Oktober 2022
	Khairul Wahdi Siregar 2	Laut Tador Village, Laut Tador Sub District, Batu Bara District, Sumatera Utara Province, Indonesia	3° 15' 56.046" N	99° 15' 3.059" E	0.77	0.77	13.86	No	10 Oktober 2022
147	Kiswanto	Tanjung Prapat Village, Laut Tador Sub District, Batu Bara District, Sumatera Utara Province, Indonesia	3° 13' 51.641" N	99° 12' 58.332" E	0.94	0.94	16.92	No	10 Oktober 2022
148	Kormina Sinaga 1	Laut Tador Village, Laut Tador Sub District, Batu Bara District, Sumatera Utara Province, Indonesia	3° 15' 56.673" N	99° 15' 45.407" E	2.60	2.60	46.80	No	10 Oktober 2022
	Kormina Sinaga 2	Laut Tador Village, Laut Tador Sub District, Batu Bara District, Sumatera Utara Province, Indonesia	3° 16' 0.137" N	99° 15' 38.579" E	0.53	0.53	9.54	No	10 Oktober 2022
149	Kosiadi 1	Kandangan Village, Laut Tador Sub District, Batu Bara District, Sumatera Utara Province, Indonesia	3° 22' 4.564" N	99° 19' 52.780" E	0.98	0.98	17.64	No	10 Oktober 2022
	Kosiadi 2	Kandangan Village, Laut Tador Sub District, Batu Bara District, Sumatera Utara Province, Indonesia	3° 21' 40.444" N	99° 19' 26.136" E	1.11	1.11	19.98	No	10 Oktober 2022
150	Kurnia	Kandangan Village, Laut Tador Sub District, Batu Bara District, Sumatera Utara Province, Indonesia	3° 21' 41.858" N	99° 19' 41.297" E	2.22	2.22	39.96	No	10 Oktober 2022
	Lamanter Tinambunan 1	Laut Tador Village, Laut Tador Sub District, Batu Bara District, Sumatera Utara Province, Indonesia	3° 16' 19.152" N	99° 15' 46.486" E	0.51	0.51	9.18	No	10 Oktober 2022
	Lamanter Tinambunan 2	Laut Tador Village, Laut Tador Sub District, Batu Bara District, Sumatera Utara Province, Indonesia	3° 16' 22.272" N	99° 15' 47.611" E	0.47	0.47	8.46	No	10 Oktober 2022
	Lamanter Tinambunan 3	Perkebunan Tanjung Kasau Village, Laut Tador Sub District, Batu Bara District, Sumatera Utara Province, Indonesia	3° 17' 20.186" N	99° 15' 48.166" E	2.00	2.00	36.00	No	10 Oktober 2022

151	Lamanter Tinambunan 4	Laut Tador Village, Laut Tador Sub District, Batu Bara District, Sumatera Utara Province, Indonesia	3° 16' 2.077" N	99° 15' 46.392" E	0.11	0.11	1.98	No	10 Oktober 2022
	Lamanter Tinambunan 5	Laut Tador Village, Laut Tador Sub District, Batu Bara District, Sumatera Utara Province, Indonesia	3° 15' 56.738" N	99° 15' 55.170" E	0.48	0.48	8.64	No	10 Oktober 2022
	Lamanter Tinambunan 6	Laut Tador Village, Laut Tador Sub District, Batu Bara District, Sumatera Utara Province, Indonesia	3° 16' 38.371" N	99° 15' 53.173" E	0.39	0.39	7.02	No	10 Oktober 2022
	Lamanter Tinambunan 7	Laut Tador Village, Laut Tador Sub District, Batu Bara District, Sumatera Utara Province, Indonesia	3° 16' 40.572" N	99° 15' 55.028" E	0.23	0.23	4.14	No	10 Oktober 2022
	Lamanter Tinambunan 8	Laut Tador Village, Laut Tador Sub District, Batu Bara District, Sumatera Utara Province, Indonesia	3° 16' 29.055" N	99° 16' 1.396" E	0.51	0.51	9.18	No	10 Oktober 2022
	Lamanter Tinambunan 9	Perkebunan Tanjung Kasau Village, Laut Tador Sub District, Batu Bara District, Sumatera Utara Province, Indonesia	3° 17' 23.895" N	99° 15' 50.049" E	2.08	2.08	37.44	No	10 Oktober 2022
152	Lamhumisar Ompusunggu	Laut Tador Village, Laut Tador Sub District, Batu Bara District, Sumatera Utara Province, Indonesia	3° 15' 31.410" N	99° 13' 51.054" E	0.91	0.91	16.38	No	10 Oktober 2022
153	Lamiyem 1	Laut Tador Village, Laut Tador Sub District, Batu Bara District, Sumatera Utara Province, Indonesia	3° 15' 37.971" N	99° 15' 18.126" E	0.43	0.43	7.74	No	10 Oktober 2022
	Lamiyem 2	Laut Tador Village, Laut Tador Sub District, Batu Bara District, Sumatera Utara Province, Indonesia	3° 15' 40.054" N	99° 15' 19.805" E	1.00	1.00	18.00	No	10 Oktober 2022
154	Lasron	Tanjung Prapat Village, Laut Tador Sub District, Batu Bara District, Sumatera Utara Province, Indonesia	3° 13' 53.515" N	99° 13' 29.792" E	0.46	0.46	8.28	No	10 Oktober 2022
155	Leber Sibarani	Tanjung Kasau Village, Laut Tador Sub District, Batu Bara District, Sumatera Utara Province, Indonesia	3° 15' 55.568" N	99° 15' 49.942" E	1.32	1.32	23.76	No	10 Oktober 2022
156	Leonardo 1	Tanjung Prapat Village, Laut Tador Sub District, Batu Bara District, Sumatera Utara Province, Indonesia	3° 13' 19.725" N	99° 13' 22.477" E	0.94	0.94	16.92	No	10 Oktober 2022
	Leonardo 2	Tanjung Prapat Village, Laut Tador Sub District, Batu Bara District, Sumatera Utara Province, Indonesia	3° 13' 17.445" N	99° 13' 22.677" E	0.47	0.47	8.46	No	10 Oktober 2022
157	Lestina Nainggolan	Tanjung Prapat Village, Laut Tador Sub District, Batu Bara District, Sumatera Utara Province, Indonesia	3° 14' 19.312" N	99° 13' 15.151" E	0.42	0.42	7.56	No	10 Oktober 2022
158	Liatar Simanjuntak	Laut Tador Village, Laut Tador Sub District, Batu Bara District, Sumatera Utara Province, Indonesia	3° 15' 24.270" N	99° 14' 11.572" E	0.65	0.65	11.70	No	10 Oktober 2022
159	Lintang Sitanggang	Laut Tador Village, Laut Tador Sub District, Batu Bara District, Sumatera Utara Province, Indonesia	3° 16' 9.627" N	99° 15' 43.449" E	0.36	0.36	6.48	No	10 Oktober 2022
160	Liswali 1	Laut Tador Village, Laut Tador Sub District, Batu Bara District, Sumatera Utara Province, Indonesia	3° 16' 26.520" N	99° 15' 43.473" E	0.56	0.56	10.08	No	10 Oktober 2022
	Liswali 2	Laut Tador Village, Laut Tador Sub District, Batu Bara District, Sumatera Utara Province, Indonesia	3° 17' 12.427" N	99° 15' 25.942" E	0.78	0.78	14.04	No	10 Oktober 2022
161	Lonsen Sinaga 1	Laut Tador Village, Laut Tador Sub District, Batu Bara District, Sumatera Utara Province, Indonesia	3° 16' 18.807" N	99° 15' 48.182" E	0.54	0.54	9.72	No	10 Oktober 2022
	Lonsen Sinaga 2	Perkebunan Tanjung Kasau Village, Laut Tador Sub District, Batu Bara District, Sumatera Utara Province, Indonesia	3° 17' 29.079" N	99° 16' 17.325" E	0.32	0.32	5.76	No	10 Oktober 2022
	Lonsen Sinaga 3	Perkebunan Tanjung Kasau Village, Laut Tador Sub District, Batu Bara District, Sumatera Utara Province, Indonesia	3° 17' 18.171" N	99° 16' 24.254" E	0.38	0.38	6.84	No	10 Oktober 2022
162	M. Tira Manurung/Darwin Tampubolon	Laut Tador Village, Laut Tador Sub District, Batu Bara District, Sumatera Utara Province, Indonesia	3° 15' 27.243" N	99° 14' 43.559" E	0.29	0.29	5.22	No	10 Oktober 2022
163	M.Syafli 1	Laut Tador Village, Laut Tador Sub District, Batu Bara District, Sumatera Utara Province, Indonesia	3° 15' 45.554" N	99° 15' 6.540" E	0.24	0.24	4.32	No	10 Oktober 2022
	M.Syafli 2	Laut Tador Village, Laut Tador Sub District, Batu Bara District, Sumatera Utara Province, Indonesia	3° 17' 25.115" N	99° 15' 33.850" E	0.24	0.24	4.32	No	10 Oktober 2022
164	Madian Harahap	Tanjung Kasau Village, Laut Tador Sub District, Batu Bara District, Sumatera Utara Province, Indonesia	3° 16' 8.782" N	99° 15' 28.506" E	0.48	0.48	8.64	No	10 Oktober 2022
165	Mahyadi	Tanjung Prapat Village, Laut Tador Sub District, Batu Bara District, Sumatera Utara Province, Indonesia	3° 13' 16.749" N	99° 13' 26.167" E	1.31	1.31	23.58	No	10 Oktober 2022
166	Maju Tampubolon 1	Laut Tador Village, Laut Tador Sub District, Batu Bara District, Sumatera Utara Province, Indonesia	3° 15' 41.412" N	99° 13' 48.432" E	0.89	0.89	16.02	No	10 Oktober 2022
	Maju Tampubolon 2	Laut Tador Village, Laut Tador Sub District, Batu Bara District, Sumatera Utara Province, Indonesia	3° 15' 40.191" N	99° 13' 50.161" E	0.47	0.47	8.46	No	10 Oktober 2022
167	Malina	Laut Tador Village, Laut Tador Sub District, Batu Bara District, Sumatera Utara Province, Indonesia	3° 15' 47.082" N	99° 15' 6.031" E	0.22	0.22	3.96	No	10 Oktober 2022
168	Mangapon Malau 1	Laut Tador Village, Laut Tador Sub District, Batu Bara District, Sumatera Utara Province, Indonesia	3° 15' 19.828" N	99° 14' 28.753" E	0.19	0.19	3.42	No	10 Oktober 2022
	Mangapon Malau 2	Laut Tador Village, Laut Tador Sub District, Batu Bara District, Sumatera Utara Province, Indonesia	3° 15' 20.522" N	99° 14' 42.967" E	0.28	0.28	5.04	No	10 Oktober 2022
	Mangapon Malau 3	Laut Tador Village, Laut Tador Sub District, Batu Bara District, Sumatera Utara Province, Indonesia	3° 15' 31.668" N	99° 14' 44.519" E	0.74	0.74	13.32	No	10 Oktober 2022
	Mangapon Malau 4	Laut Tador Village, Laut Tador Sub District, Batu Bara District, Sumatera Utara Province, Indonesia	3° 15' 29.426" N	99° 14' 38.096" E	0.32	0.32	5.76	No	10 Oktober 2022
169	Mangara Sitanggang 1	Laut Tador Village, Laut Tador Sub District, Batu Bara District, Sumatera Utara Province, Indonesia	3° 16' 41.813" N	99° 15' 53.636" E	0.30	0.30	5.40	No	10 Oktober 2022
	Mangara Sitanggang 2	Perkebunan Tanjung Kasau Village, Laut Tador Sub District, Batu Bara District, Sumatera Utara Province, Indonesia	3° 17' 23.272" N	99° 16' 13.774" E	0.23	0.23	4.14	No	10 Oktober 2022
170	Mangatas Simbolon 1	Laut Tador Village, Laut Tador Sub District, Batu Bara District, Sumatera Utara Province, Indonesia	3° 14' 58.204" N	99° 14' 26.479" E	0.50	0.50	9.00	No	10 Oktober 2022
	Mangatas Simbolon 2	Laut Tador Village, Laut Tador Sub District, Batu Bara District, Sumatera Utara Province, Indonesia	3° 15' 7.223" N	99° 14' 26.613" E	0.30	0.30	5.40	No	10 Oktober 2022
	Mangatas Simbolon 3	Laut Tador Village, Laut Tador Sub District, Batu Bara District, Sumatera Utara Province, Indonesia	3° 15' 12.574" N	99° 14' 26.972" E	0.21	0.21	3.78	No	10 Oktober 2022
	Mangatas Simbolon 4	Laut Tador Village, Laut Tador Sub District, Batu Bara District, Sumatera Utara Province, Indonesia	3° 15' 22.847" N	99° 14' 28.155" E	0.21	0.21	3.78	No	10 Oktober 2022
171	Manorang	Laut Tador Village, Laut Tador Sub District, Batu Bara District, Sumatera Utara Province, Indonesia	3° 16' 14.036" N	99° 15' 51.810" E	1.63	1.63	29.34	No	10 Oktober 2022
172	Marena Sitohang 1	Perkebunan Tanjung Kasau Village, Laut Tador Sub District, Batu Bara District, Sumatera Utara Province, Indonesia	3° 17' 19.209" N	99° 16' 26.496" E	0.47	0.47	8.46	No	10 Oktober 2022
	Marena Sitohang 2	Perkebunan Tanjung Kasau Village, Laut Tador Sub District, Batu Bara District, Sumatera Utara Province, Indonesia	3° 17' 22.471" N	99° 16' 21.945" E	0.24	0.24	4.32	No	10 Oktober 2022
173	Marfilim Ompusunggu 1	Laut Tador Village, Laut Tador Sub District, Batu Bara District, Sumatera Utara Province, Indonesia	3° 15' 15.397" N	99° 14' 2.793" E	0.43	0.43	7.74	No	10 Oktober 2022
	Marfilim Ompusunggu 2	Laut Tador Village, Laut Tador Sub District, Batu Bara District, Sumatera Utara Province, Indonesia	3° 15' 22.212" N	99° 14' 20.025" E	0.33	0.33	5.94	No	10 Oktober 2022
174	Mariyani 1	Tanjung Prapat Village, Laut Tador Sub District, Batu Bara District, Sumatera Utara Province, Indonesia	3° 14' 42.445" N	99° 13' 49.610" E	1.21	1.21	21.78	No	10 Oktober 2022
	Mariyani 2	Tanjung Prapat Village, Laut Tador Sub District, Batu Bara District, Sumatera Utara Province, Indonesia	3° 12' 50.775" N	99° 13' 2.073" E	1.74	1.74	31.32	No	10 Oktober 2022
175	Marolop Napitu 1	Laut Tador Village, Laut Tador Sub District, Batu Bara District, Sumatera Utara Province, Indonesia	3° 16' 3.228" N	99° 15' 50.447" E	0.47	0.47	8.46	No	10 Oktober 2022
	Marolop Napitu 2	Laut Tador Village, Laut Tador Sub District, Batu Bara District, Sumatera Utara Province, Indonesia	3° 16' 8.537" N	99° 15' 38.129" E	0.25	0.25	4.50	No	10 Oktober 2022
	Marolop Napitu 3	Laut Tador Village, Laut Tador Sub District, Batu Bara District, Sumatera Utara Province, Indonesia	3° 16' 6.064" N	99° 15' 37.092" E	0.34	0.34	6.12	No	10 Oktober 2022
	Marolop Napitu 4	Laut Tador Village, Laut Tador Sub District, Batu Bara District, Sumatera Utara Province, Indonesia	3° 16' 3.140" N	99° 15' 40.233" E	0.17	0.17	3.06	No	10 Oktober 2022

176	Marlin Hulapea 1	Laut Tador Village, Laut Tador Sub District, Batu Bara District, Sumatera Utara Province, Indonesia	3° 16' 33.452" N	99° 15' 38.702" E	1.58	1.58	28.44	No	10 Oktober 2022
	Marlin Hulapea 2	Laut Tador Village, Laut Tador Sub District, Batu Bara District, Sumatera Utara Province, Indonesia	3° 16' 5.909" N	99° 15' 23.028" E	1.99	1.99	35.82	No	10 Oktober 2022
177	Marlin Naingolan 1	Tanjung Prapat Village, Laut Tador Sub District, Batu Bara District, Sumatera Utara Province, Indonesia	3° 14' 23.650" N	99° 13' 13.967" E	0.27	0.27	4.86	No	10 Oktober 2022
	Marlin Naingolan 2	Tanjung Prapat Village, Laut Tador Sub District, Batu Bara District, Sumatera Utara Province, Indonesia	3° 14' 18.403" N	99° 13' 12.081" E	0.46	0.46	8.28	No	10 Oktober 2022
	Marlin Naingolan 3	Tanjung Prapat Village, Laut Tador Sub District, Batu Bara District, Sumatera Utara Province, Indonesia	3° 13' 31.338" N	99° 12' 58.459" E	0.41	0.41	7.38	No	10 Oktober 2022
178	Marlin Sibarani 1	Laut Tador Village, Laut Tador Sub District, Batu Bara District, Sumatera Utara Province, Indonesia	3° 16' 46.158" N	99° 15' 57.249" E	0.60	0.60	10.80	No	10 Oktober 2022
	Marlin Sibarani 2	Perkebunan Tanjung Kasau Village, Laut Tador Sub District, Batu Bara District, Sumatera Utara Province, Indonesia	3° 17' 20.032" N	99° 16' 14.656" E	0.43	0.43	7.74	No	10 Oktober 2022
	Marlin Sibarani 3	Perkebunan Tanjung Kasau Village, Laut Tador Sub District, Batu Bara District, Sumatera Utara Province, Indonesia	3° 17' 38.949" N	99° 16' 16.305" E	0.84	0.84	15.12	No	10 Oktober 2022
	Marlin Sibarani 4	Perkebunan Tanjung Kasau Village, Laut Tador Sub District, Batu Bara District, Sumatera Utara Province, Indonesia	3° 17' 37.058" N	99° 16' 19.754" E	0.32	0.32	5.76	No	10 Oktober 2022
179	Marlua Sagala 1	Tanjung Kasau Village, Laut Tador Sub District, Batu Bara District, Sumatera Utara Province, Indonesia	3° 16' 34.498" N	99° 15' 46.670" E	1.02	1.02	18.36	No	10 Oktober 2022
	Marlua Sagala 2	Laut Tador Village, Laut Tador Sub District, Batu Bara District, Sumatera Utara Province, Indonesia	3° 16' 36.502" N	99° 15' 43.075" E	2.00	2.00	36.00	No	10 Oktober 2022
	Marlua Sagala 3	Laut Tador Village, Laut Tador Sub District, Batu Bara District, Sumatera Utara Province, Indonesia	3° 16' 22.111" N	99° 15' 34.850" E	0.68	0.68	12.24	No	10 Oktober 2022
	Marlua Sagala 4	Laut Tador Village, Laut Tador Sub District, Batu Bara District, Sumatera Utara Province, Indonesia	3° 16' 19.100" N	99° 15' 33.499" E	1.00	1.00	18.00	No	10 Oktober 2022
180	Maruba Tampubolon	Laut Tador Village, Laut Tador Sub District, Batu Bara District, Sumatera Utara Province, Indonesia	3° 14' 58.457" N	99° 14' 19.560" E	0.22	0.22	3.96	No	10 Oktober 2022
181	Marudut Silalahi 1	Laut Tador Village, Laut Tador Sub District, Batu Bara District, Sumatera Utara Province, Indonesia	3° 16' 4.040" N	99° 15' 55.958" E	0.59	0.59	10.62	No	10 Oktober 2022
	Marudut Silalahi 2	Laut Tador Village, Laut Tador Sub District, Batu Bara District, Sumatera Utara Province, Indonesia	3° 16' 11.701" N	99° 15' 35.242" E	0.40	0.40	7.20	No	10 Oktober 2022
	Marudut Silalahi 3	Tanjung Prapat Village, Laut Tador Sub District, Batu Bara District, Sumatera Utara Province, Indonesia	3° 14' 10.330" N	99° 13' 16.495" E	0.40	0.40	7.20	No	10 Oktober 2022
182	Maruli Tua Manalu 1	Laut Tador Village, Laut Tador Sub District, Batu Bara District, Sumatera Utara Province, Indonesia	3° 14' 57.986" N	99° 14' 10.875" E	0.79	0.79	14.22	No	10 Oktober 2022
	Maruli Tua Manalu 2	Laut Tador Village, Laut Tador Sub District, Batu Bara District, Sumatera Utara Province, Indonesia	3° 14' 58.027" N	99° 14' 17.285" E	0.59	0.59	10.62	No	10 Oktober 2022
183	Maruli Tua Silorus 1	Laut Tador Village, Laut Tador Sub District, Batu Bara District, Sumatera Utara Province, Indonesia	3° 16' 8.198" N	99° 15' 7.296" E	1.13	1.13	20.34	No	10 Oktober 2022
	Maruli Tua Silorus 2	Laut Tador Village, Laut Tador Sub District, Batu Bara District, Sumatera Utara Province, Indonesia	3° 16' 39.923" N	99° 15' 46.395" E	0.36	0.36	6.48	No	10 Oktober 2022
184	Marwanson Simbolon	Laut Tador Village, Laut Tador Sub District, Batu Bara District, Sumatera Utara Province, Indonesia	3° 14' 48.137" N	99° 14' 8.503" E	0.73	0.73	13.14	No	10 Oktober 2022
185	Maslan Damanik 1	Tanjung Prapat Village, Laut Tador Sub District, Batu Bara District, Sumatera Utara Province, Indonesia	3° 14' 12.971" N	99° 13' 15.576" E	0.72	0.72	12.96	No	10 Oktober 2022
	Maslan Damanik 2	Tanjung Prapat Village, Laut Tador Sub District, Batu Bara District, Sumatera Utara Province, Indonesia	3° 14' 11.235" N	99° 13' 7.472" E	0.37	0.37	6.66	No	10 Oktober 2022
	Maslan Damanik 3	Tanjung Prapat Village, Laut Tador Sub District, Batu Bara District, Sumatera Utara Province, Indonesia	3° 14' 17.463" N	99° 13' 18.550" E	1.28	1.28	23.04	No	10 Oktober 2022
186	Masniar	Laut Tador Village, Laut Tador Sub District, Batu Bara District, Sumatera Utara Province, Indonesia	3° 17' 11.305" N	99° 15' 23.039" E	0.11	0.11	1.98	No	10 Oktober 2022
187	Mahnauli Rambe	Laut Tador Village, Laut Tador Sub District, Batu Bara District, Sumatera Utara Province, Indonesia	3° 16' 12.259" N	99° 15' 24.202" E	1.38	1.38	24.84	No	10 Oktober 2022
188	Mesgini	Tanjung Prapat Village, Laut Tador Sub District, Batu Bara District, Sumatera Utara Province, Indonesia	3° 13' 32.767" N	99° 12' 45.699" E	0.45	0.45	8.10	No	10 Oktober 2022
189	Mesyatik	Tanjung Prapat Village, Laut Tador Sub District, Batu Bara District, Sumatera Utara Province, Indonesia	3° 14' 26.162" N	99° 13' 9.686" E	4.00	4.00	72.00	No	10 Oktober 2022
190	Mhd Yusuf 1	Kandangan Village, Laut Tador Sub District, Batu Bara District, Sumatera Utara Province, Indonesia	3° 22' 14.814" N	99° 19' 14.738" E	0.72	0.72	12.96	No	10 Oktober 2022
	Mhd Yusuf 2	Kandangan Village, Laut Tador Sub District, Batu Bara District, Sumatera Utara Province, Indonesia	3° 23' 1.181" N	99° 19' 24.851" E	0.96	0.96	17.28	No	10 Oktober 2022
191	Mika Ria Simanjuntak 1	Laut Tador Village, Laut Tador Sub District, Batu Bara District, Sumatera Utara Province, Indonesia	3° 16' 6.155" N	99° 15' 52.881" E	0.38	0.38	6.84	No	10 Oktober 2022
	Mika Ria Simanjuntak 2	Laut Tador Village, Laut Tador Sub District, Batu Bara District, Sumatera Utara Province, Indonesia	3° 16' 40.485" N	99° 15' 45.520" E	0.41	0.41	7.38	No	10 Oktober 2022
192	Mikael Sianturi	Laut Tador Village, Laut Tador Sub District, Batu Bara District, Sumatera Utara Province, Indonesia	3° 15' 42.920" N	99° 13' 42.685" E	0.15	0.15	2.70	No	10 Oktober 2022
193	Misdi Nasution	Tanjung Prapat Village, Laut Tador Sub District, Batu Bara District, Sumatera Utara Province, Indonesia	3° 14' 15.423" N	99° 11' 29.945" E	0.79	0.79	14.22	No	10 Oktober 2022
194	Miswanto 1	Laut Tador Village, Laut Tador Sub District, Batu Bara District, Sumatera Utara Province, Indonesia	3° 15' 30.610" N	99° 15' 36.115" E	1.70	1.70	30.60	No	10 Oktober 2022
	Miswanto 2	Laut Tador Village, Laut Tador Sub District, Batu Bara District, Sumatera Utara Province, Indonesia	3° 15' 50.574" N	99° 15' 6.768" E	0.67	0.67	12.06	No	10 Oktober 2022
195	Monang Sidabutar	Tanjung Prapat Village, Laut Tador Sub District, Batu Bara District, Sumatera Utara Province, Indonesia	3° 14' 4.809" N	99° 13' 38.826" E	0.36	0.36	6.48	No	10 Oktober 2022
196	Monikem	Laut Tador Village, Laut Tador Sub District, Batu Bara District, Sumatera Utara Province, Indonesia	3° 14' 36.348" N	99° 13' 52.429" E	0.30	0.30	5.40	No	10 Oktober 2022
197	Moriati Rajagukguk	Tanjung Prapat Village, Laut Tador Sub District, Batu Bara District, Sumatera Utara Province, Indonesia	3° 14' 27.145" N	99° 13' 27.798" E	2.71	2.71	48.78	No	10 Oktober 2022
198	Muaraulan Siregar 1	Laut Tador Village, Laut Tador Sub District, Batu Bara District, Sumatera Utara Province, Indonesia	3° 15' 17.499" N	99° 14' 33.898" E	0.28	0.28	5.04	No	10 Oktober 2022
	Muaraulan Siregar 2	Laut Tador Village, Laut Tador Sub District, Batu Bara District, Sumatera Utara Province, Indonesia	3° 15' 21.785" N	99° 14' 23.898" E	0.31	0.31	5.58	No	10 Oktober 2022
	Muaraulan Siregar 3	Laut Tador Village, Laut Tador Sub District, Batu Bara District, Sumatera Utara Province, Indonesia	3° 15' 25.887" N	99° 14' 26.399" E	0.15	0.15	2.70	No	10 Oktober 2022
199	Murni Sihombing 1	Laut Tador Village, Laut Tador Sub District, Batu Bara District, Sumatera Utara Province, Indonesia	3° 15' 38.482" N	99° 15' 41.549" E	0.51	0.51	9.18	No	10 Oktober 2022
	Murni Sihombing 2	Laut Tador Village, Laut Tador Sub District, Batu Bara District, Sumatera Utara Province, Indonesia	3° 15' 32.230" N	99° 15' 41.732" E	0.86	0.86	15.48	No	10 Oktober 2022
	Murni Sihombing 3	Laut Tador Village, Laut Tador Sub District, Batu Bara District, Sumatera Utara Province, Indonesia	3° 16' 8.037" N	99° 15' 34.430" E	0.35	0.35	6.30	No	10 Oktober 2022
200	Nanni Simaremare 1/Anian Simare - M	Laut Tador Village, Laut Tador Sub District, Batu Bara District, Sumatera Utara Province, Indonesia	3° 14' 56.663" N	99° 14' 30.690" E	0.36	0.36	6.48	No	10 Oktober 2022
	Nanni Simaremare 2/Anian Simare - M	Laut Tador Village, Laut Tador Sub District, Batu Bara District, Sumatera Utara Province, Indonesia	3° 15' 25.031" N	99° 14' 40.538" E	0.65	0.65	11.70	No	10 Oktober 2022
201	Ngadono	Tanjung Prapat Village, Laut Tador Sub District, Batu Bara District, Sumatera Utara Province, Indonesia	3° 13' 59.603" N	99° 12' 48.077" E	0.81	0.81	14.58	No	10 Oktober 2022
202	Ngatijo 1	Laut Tador Village, Laut Tador Sub District, Batu Bara District, Sumatera Utara Province, Indonesia	3° 15' 57.351" N	99° 15' 12.785" E	0.36	0.36	6.48	No	10 Oktober 2022
	Ngatijo 2	Laut Tador Village, Laut Tador Sub District, Batu Bara District, Sumatera Utara Province, Indonesia	3° 16' 10.964" N	99° 15' 4.130" E	0.35	0.35	6.30	No	10 Oktober 2022

	Ngatjo 3	Laut Tador Village, Laut Tador Sub District, Batu Bara District, Sumatera Utara Province, Indonesia	3° 15' 50.387" N	99° 15' 8.918" E	0.62	0.62	11.16	No	10 Oktober 2022
	Ngatjo 4	Laut Tador Village, Laut Tador Sub District, Batu Bara District, Sumatera Utara Province, Indonesia	3° 15' 39.668" N	99° 15' 33.161" E	0.23	0.23	4.14	No	10 Oktober 2022
203	Ngatim	Tanjung Kasau Village, Laut Tador Sub District, Batu Bara District, Sumatera Utara Province, Indonesia	3° 17' 32.306" N	99° 16' 29.346" E	0.99	0.99	17.82	No	10 Oktober 2022
204	Ngatimin 1	Laut Tador Village, Laut Tador Sub District, Batu Bara District, Sumatera Utara Province, Indonesia	3° 16' 1.178" N	99° 15' 30.531" E	0.27	0.27	4.86	No	10 Oktober 2022
	Ngatimin 2	Laut Tador Village, Laut Tador Sub District, Batu Bara District, Sumatera Utara Province, Indonesia	3° 15' 54.485" N	99° 15' 9.595" E	0.32	0.32	5.76	No	10 Oktober 2022
205	Norma Manurung 1	Laut Tador Village, Laut Tador Sub District, Batu Bara District, Sumatera Utara Province, Indonesia	3° 16' 5.789" N	99° 15' 46.510" E	0.25	0.25	4.50	No	10 Oktober 2022
	Norma Manurung 2	Laut Tador Village, Laut Tador Sub District, Batu Bara District, Sumatera Utara Province, Indonesia	3° 15' 53.451" N	99° 16' 0.951" E	0.66	0.66	11.88	No	10 Oktober 2022
	Norma Manurung 3	Laut Tador Village, Laut Tador Sub District, Batu Bara District, Sumatera Utara Province, Indonesia	3° 16' 7.521" N	99° 15' 44.298" E	0.36	0.36	6.48	No	10 Oktober 2022
206	Nover Rajagukguk	Laut Tador Village, Laut Tador Sub District, Batu Bara District, Sumatera Utara Province, Indonesia	3° 15' 24.610" N	99° 14' 29.510" E	0.17	0.17	3.06	No	10 Oktober 2022
207	Novha	Kandangan Village, Laut Tador Sub District, Batu Bara District, Sumatera Utara Province, Indonesia	3° 22' 19.117" N	99° 19' 22.946" E	0.38	0.38	6.84	No	10 Oktober 2022
208	Nukman Damanik	Laut Tador Village, Laut Tador Sub District, Batu Bara District, Sumatera Utara Province, Indonesia	3° 17' 5.445" N	99° 15' 14.882" E	0.75	0.75	13.50	No	10 Oktober 2022
209	Nur Jamiah Siregar 1	Laut Tador Village, Laut Tador Sub District, Batu Bara District, Sumatera Utara Province, Indonesia	3° 15' 53.230" N	99° 15' 24.320" E	0.07	0.07	1.26	No	10 Oktober 2022
	Nur Jamiah Siregar 2	Laut Tador Village, Laut Tador Sub District, Batu Bara District, Sumatera Utara Province, Indonesia	3° 15' 43.724" N	99° 15' 35.287" E	1.95	1.95	35.10	No	10 Oktober 2022
210	Nuranto	Laut Tador Village, Laut Tador Sub District, Batu Bara District, Sumatera Utara Province, Indonesia	3° 15' 58.822" N	99° 15' 12.211" E	0.22	0.22	3.96	No	10 Oktober 2022
211	Nurhayati	Kandangan Village, Laut Tador Sub District, Batu Bara District, Sumatera Utara Province, Indonesia	3° 22' 1.360" N	99° 19' 6.528" E	0.70	0.70	12.60	No	10 Oktober 2022
212	Nurjamiah	Laut Tador Village, Laut Tador Sub District, Batu Bara District, Sumatera Utara Province, Indonesia	3° 15' 56.590" N	99° 15' 16.868" E	0.86	0.86	15.48	No	10 Oktober 2022
213	Pagaria Silalahi	Laut Tador Village, Laut Tador Sub District, Batu Bara District, Sumatera Utara Province, Indonesia	3° 16' 8.997" N	99° 15' 48.380" E	0.43	0.43	7.74	No	10 Oktober 2022
214	Paidi 1	Laut Tador Village, Laut Tador Sub District, Batu Bara District, Sumatera Utara Province, Indonesia	3° 15' 59.827" N	99° 15' 10.722" E	0.55	0.55	9.90	No	10 Oktober 2022
	Paidi 2	Laut Tador Village, Laut Tador Sub District, Batu Bara District, Sumatera Utara Province, Indonesia	3° 16' 3.416" N	99° 15' 12.938" E	0.25	0.25	4.50	No	10 Oktober 2022
215	Palman	Laut Tador Village, Laut Tador Sub District, Batu Bara District, Sumatera Utara Province, Indonesia	3° 17' 22.023" N	99° 15' 27.548" E	0.17	0.17	3.06	No	10 Oktober 2022
216	Paingan	Laut Tador Village, Laut Tador Sub District, Batu Bara District, Sumatera Utara Province, Indonesia	3° 17' 36.257" N	99° 15' 58.458" E	0.40	0.40	7.20	No	10 Oktober 2022
217	Paino	Tanjung Prapat Village, Laut Tador Sub District, Batu Bara District, Sumatera Utara Province, Indonesia	3° 13' 44.521" N	99° 12' 43.663" E	0.44	0.44	7.92	No	10 Oktober 2022
218	Pantus Rogat Ompusunggu 1/Rogat F	Laut Tador Village, Laut Tador Sub District, Batu Bara District, Sumatera Utara Province, Indonesia	3° 15' 12.306" N	99° 14' 29.697" E	0.16	0.16	2.88	No	10 Oktober 2022
	Pantus Rogat Ompusunggu 2/Rogat F	Laut Tador Village, Laut Tador Sub District, Batu Bara District, Sumatera Utara Province, Indonesia	3° 15' 8.430" N	99° 14' 25.885" E	0.17	0.17	3.06	No	10 Oktober 2022
	Pantus Rogat Ompusunggu 3/Rogat F	Laut Tador Village, Laut Tador Sub District, Batu Bara District, Sumatera Utara Province, Indonesia	3° 15' 20.650" N	99° 14' 27.035" E	0.19	0.19	3.42	No	10 Oktober 2022
219	Parulian Rajagukguk 1	Laut Tador Village, Laut Tador Sub District, Batu Bara District, Sumatera Utara Province, Indonesia	3° 15' 16.864" N	99° 14' 28.938" E	0.19	0.19	3.42	No	10 Oktober 2022
	Parulian Rajagukguk 2	Laut Tador Village, Laut Tador Sub District, Batu Bara District, Sumatera Utara Province, Indonesia	3° 15' 28.895" N	99° 14' 36.688" E	0.19	0.19	3.42	No	10 Oktober 2022
220	Parulian Situngkir 1	Laut Tador Village, Laut Tador Sub District, Batu Bara District, Sumatera Utara Province, Indonesia	3° 16' 0.461" N	99° 15' 25.009" E	0.46	0.46	8.28	No	10 Oktober 2022
	Parulian Situngkir 2	Perkebunan Tanjung Kasau Village, Laut Tador Sub District, Batu Bara District, Sumatera Utara Province, Indonesia	3° 17' 4.793" N	99° 15' 55.093" E	0.55	0.55	9.90	No	10 Oktober 2022
221	Pasuria	Tanjung Prapat Village, Laut Tador Sub District, Batu Bara District, Sumatera Utara Province, Indonesia	3° 13' 34.846" N	99° 13' 35.438" E	0.62	0.62	11.16	No	10 Oktober 2022
222	Pasuria Sitingjak	Tanjung Prapat Village, Laut Tador Sub District, Batu Bara District, Sumatera Utara Province, Indonesia	3° 13' 39.624" N	99° 13' 29.439" E	0.15	0.15	2.70	No	10 Oktober 2022
223	Pettamin Manurung	Tanjung Prapat Village, Laut Tador Sub District, Batu Bara District, Sumatera Utara Province, Indonesia	3° 13' 48.710" N	99° 13' 21.629" E	0.32	0.32	5.76	No	10 Oktober 2022
224	Phidel Ramos Siregar 1	Laut Tador Village, Laut Tador Sub District, Batu Bara District, Sumatera Utara Province, Indonesia	3° 15' 7.017" N	99° 14' 10.468" E	0.28	0.28	5.04	No	10 Oktober 2022
	Phidel Ramos Siregar 2	Laut Tador Village, Laut Tador Sub District, Batu Bara District, Sumatera Utara Province, Indonesia	3° 15' 10.912" N	99° 14' 22.063" E	0.79	0.79	14.22	No	10 Oktober 2022
	Phidel Ramos Siregar 3	Laut Tador Village, Laut Tador Sub District, Batu Bara District, Sumatera Utara Province, Indonesia	3° 15' 19.736" N	99° 14' 31.784" E	0.22	0.22	3.96	No	10 Oktober 2022
	Phidel Ramos Siregar 4	Laut Tador Village, Laut Tador Sub District, Batu Bara District, Sumatera Utara Province, Indonesia	3° 15' 15.348" N	99° 14' 39.016" E	0.25	0.25	4.50	No	10 Oktober 2022
	Phidel Ramos Siregar 5	Laut Tador Village, Laut Tador Sub District, Batu Bara District, Sumatera Utara Province, Indonesia	3° 15' 13.190" N	99° 14' 28.805" E	0.26	0.26	4.68	No	10 Oktober 2022
225	Pongirim Melda Siregar/Manglingir Siregar	Laut Tador Village, Laut Tador Sub District, Batu Bara District, Sumatera Utara Province, Indonesia	3° 14' 57.976" N	99° 14' 18.900" E	0.38	0.38	6.84	No	10 Oktober 2022
226	Ponjan 1	Tanjung Prapat Village, Laut Tador Sub District, Batu Bara District, Sumatera Utara Province, Indonesia	3° 14' 1.190" N	99° 12' 54.649" E	1.55	1.55	27.90	No	10 Oktober 2022
	Ponjan 2	Tanjung Prapat Village, Laut Tador Sub District, Batu Bara District, Sumatera Utara Province, Indonesia	3° 13' 58.342" N	99° 12' 50.975" E	1.14	1.14	20.52	No	10 Oktober 2022
227	Ponjan Siregar 1	Laut Tador Village, Laut Tador Sub District, Batu Bara District, Sumatera Utara Province, Indonesia	3° 15' 3.076" N	99° 14' 27.554" E	0.38	0.38	6.84	No	10 Oktober 2022
	Ponjan Siregar 2	Laut Tador Village, Laut Tador Sub District, Batu Bara District, Sumatera Utara Province, Indonesia	3° 15' 16.230" N	99° 14' 41.790" E	0.65	0.65	11.70	No	10 Oktober 2022
	Ponjan Siregar 3	Laut Tador Village, Laut Tador Sub District, Batu Bara District, Sumatera Utara Province, Indonesia	3° 15' 22.938" N	99° 14' 15.934" E	0.78	0.78	14.04	No	10 Oktober 2022
228	Ponitan	Tanjung Prapat Village, Laut Tador Sub District, Batu Bara District, Sumatera Utara Province, Indonesia	3° 13' 27.311" N	99° 12' 40.089" E	0.53	0.53	9.54	No	10 Oktober 2022
229	Ponsah	Tanjung Prapat Village, Laut Tador Sub District, Batu Bara District, Sumatera Utara Province, Indonesia	3° 14' 1.468" N	99° 13' 3.675" E	0.45	0.45	8.10	No	10 Oktober 2022
230	Pulo Tampubolon	Laut Tador Village, Laut Tador Sub District, Batu Bara District, Sumatera Utara Province, Indonesia	3° 15' 17.620" N	99° 14' 40.146" E	0.58	0.58	10.44	No	10 Oktober 2022
231	Purnama Manik	Tanjung Prapat Village, Laut Tador Sub District, Batu Bara District, Sumatera Utara Province, Indonesia	3° 14' 16.810" N	99° 13' 29.283" E	0.43	0.43	7.74	No	10 Oktober 2022
232	Purnama Siburian 1	Tanjung Prapat Village, Laut Tador Sub District, Batu Bara District, Sumatera Utara Province, Indonesia	3° 14' 5.168" N	99° 13' 19.179" E	0.74	0.74	13.32	No	10 Oktober 2022
	Purnama Siburian 2	Tanjung Prapat Village, Laut Tador Sub District, Batu Bara District, Sumatera Utara Province, Indonesia	3° 14' 15.819" N	99° 13' 14.648" E	0.83	0.83	14.94	No	10 Oktober 2022
233	Ramili Situmorang	Tanjung Kasau Village, Laut Tador Sub District, Batu Bara District, Sumatera Utara Province, Indonesia	3° 17' 21.579" N	99° 16' 17.786" E	0.80	0.80	14.40	No	10 Oktober 2022
234	Ramses Siregar 1	Laut Tador Village, Laut Tador Sub District, Batu Bara District, Sumatera Utara Province, Indonesia	3° 15' 18.020" N	99° 14' 30.953" E	0.28	0.28	5.04	No	10 Oktober 2022
	Ramses Siregar 2	Laut Tador Village, Laut Tador Sub District, Batu Bara District, Sumatera Utara Province, Indonesia	3° 15' 20.272" N	99° 14' 30.745" E	0.09	0.09	1.62	No	10 Oktober 2022

Ramses Siregar 3	Laut Tador Village, Laut Tador Sub District, Batu Bara District, Sumatera Utara Province, Indonesia	3° 14' 51.604" N	99° 14' 21.170" E	1.17	1.17	21.06	No	10 Oktober 2022	
	Laut Tador Village, Laut Tador Sub District, Batu Bara District, Sumatera Utara Province, Indonesia	3° 15' 11.032" N	99° 14' 12.734" E	0.68	0.68	12.24	No	10 Oktober 2022	
Ramses Siregar 4	Laut Tador Village, Laut Tador Sub District, Batu Bara District, Sumatera Utara Province, Indonesia	3° 15' 24.276" N	99° 14' 35.273" E	0.28	0.28	5.04	No	10 Oktober 2022	
235	Rapolo	Laut Tador Village, Laut Tador Sub District, Batu Bara District, Sumatera Utara Province, Indonesia	3° 21' 58.753" N	99° 19' 36.493" E	0.12	0.12	2.16	No	10 Oktober 2022
236	Rasmi	Kandangan Village, Laut Tador Sub District, Batu Bara District, Sumatera Utara Province, Indonesia	3° 15' 20.385" N	99° 14' 16.232" E	0.66	0.66	11.88	No	10 Oktober 2022
237	Resinta Sihombing 1	Laut Tador Village, Laut Tador Sub District, Batu Bara District, Sumatera Utara Province, Indonesia	3° 15' 22.631" N	99° 14' 50.580" E	0.33	0.33	5.94	No	10 Oktober 2022
	Resinta Sihombing 2	Laut Tador Village, Laut Tador Sub District, Batu Bara District, Sumatera Utara Province, Indonesia	3° 17' 17.073" N	99° 15' 59.038" E	0.16	0.16	2.88	No	10 Oktober 2022
238	Riadi 1	Perkebunan Tanjung Kasau Village, Laut Tador Sub District, Batu Bara District, Sumatera Utara Province, Indonesia	3° 17' 14.103" N	99° 15' 57.315" E	0.06	0.06	1.08	No	10 Oktober 2022
	Riadi 2	Perkebunan Tanjung Kasau Village, Laut Tador Sub District, Batu Bara District, Sumatera Utara Province, Indonesia	3° 15' 48.935" N	99° 15' 15.663" E	0.36	0.36	6.48	No	10 Oktober 2022
239	Rianto 1	Laut Tador Village, Laut Tador Sub District, Batu Bara District, Sumatera Utara Province, Indonesia	3° 16' 14.688" N	99° 16' 6.936" E	0.33	0.33	5.94	No	10 Oktober 2022
	Rianto 2	Laut Tador Village, Laut Tador Sub District, Batu Bara District, Sumatera Utara Province, Indonesia	3° 16' 19.153" N	99° 15' 59.632" E	0.94	0.94	16.92	No	10 Oktober 2022
	Rianto 3	Laut Tador Village, Laut Tador Sub District, Batu Bara District, Sumatera Utara Province, Indonesia	3° 15' 45.353" N	99° 15' 7.517" E	0.19	0.19	3.42	No	10 Oktober 2022
240	Riduwan	Laut Tador Village, Laut Tador Sub District, Batu Bara District, Sumatera Utara Province, Indonesia	3° 22' 25.072" N	99° 18' 48.768" E	2.06	2.06	37.08	No	10 Oktober 2022
241	Rinaldi R Nainggolan	Kandangan Village, Laut Tador Sub District, Batu Bara District, Sumatera Utara Province, Indonesia	3° 18' 54.393" N	99° 16' 8.066" E	0.26	0.26	4.68	No	10 Oktober 2022
242	Rini Widianti 1	Pelanggrin Village, Laut Tador Sub District, Batu Bara District, Sumatera Utara Province, Indonesia	3° 18' 58.020" N	99° 16' 5.532" E	0.32	0.32	5.76	No	10 Oktober 2022
	Rini Widianti 2	Pelanggrin Village, Laut Tador Sub District, Batu Bara District, Sumatera Utara Province, Indonesia	3° 13' 47.951" N	99° 13' 35.189" E	0.48	0.48	8.64	No	10 Oktober 2022
243	Rismauli Gultom	Tanjung Prapat Village, Laut Tador Sub District, Batu Bara District, Sumatera Utara Province, Indonesia	3° 17' 2.009" N	99° 15' 53.767" E	1.38	1.38	24.84	No	10 Oktober 2022
244	Rismauli Manalu	Tanjung Kasau Village, Laut Tador Sub District, Batu Bara District, Sumatera Utara Province, Indonesia	3° 14' 59.545" N	99° 14' 22.679" E	0.19	0.19	3.42	No	10 Oktober 2022
245	Rismawati Turnip 1	Laut Tador Village, Laut Tador Sub District, Batu Bara District, Sumatera Utara Province, Indonesia	3° 15' 32.676" N	99° 14' 37.694" E	0.77	0.77	13.86	No	10 Oktober 2022
	Rismawati Turnip 2	Laut Tador Village, Laut Tador Sub District, Batu Bara District, Sumatera Utara Province, Indonesia	3° 17' 11.017" N	99° 15' 57.080" E	0.31	0.31	5.58	No	10 Oktober 2022
246	Riwanto	Perkebunan Tanjung Kasau Village, Laut Tador Sub District, Batu Bara District, Sumatera Utara Province, Indonesia	3° 15' 7.843" N	99° 14' 13.017" E	0.44	0.44	7.92	No	10 Oktober 2022
247	Robby Purba	Laut Tador Village, Laut Tador Sub District, Batu Bara District, Sumatera Utara Province, Indonesia	3° 17' 19.597" N	99° 16' 29.165" E	0.88	0.88	15.84	No	10 Oktober 2022
248	Robet Sitompul	Perkebunan Tanjung Kasau Village, Laut Tador Sub District, Batu Bara District, Sumatera Utara Province, Indonesia	3° 22' 2.381" N	99° 19' 3.737" E	0.33	0.33	5.94	No	10 Oktober 2022
249	Romani	Kandangan Village, Laut Tador Sub District, Batu Bara District, Sumatera Utara Province, Indonesia	3° 15' 13.465" N	99° 14' 22.930" E	0.46	0.46	8.28	No	10 Oktober 2022
250	Ronal Manurung 1	Laut Tador Village, Laut Tador Sub District, Batu Bara District, Sumatera Utara Province, Indonesia	3° 15' 25.697" N	99° 14' 32.776" E	0.48	0.48	8.64	No	10 Oktober 2022
	Ronal Manurung 2	Laut Tador Village, Laut Tador Sub District, Batu Bara District, Sumatera Utara Province, Indonesia	3° 17' 3.440" N	99° 16' 0.763" E	0.64	0.64	11.52	No	10 Oktober 2022
251	Rosman Panggabean 1	Perkebunan Tanjung Kasau Village, Laut Tador Sub District, Batu Bara District, Sumatera Utara Province, Indonesia	3° 15' 58.264" N	99° 15' 20.537" E	0.96	0.96	17.28	No	10 Oktober 2022
	Rosman Panggabean 2	Laut Tador Village, Laut Tador Sub District, Batu Bara District, Sumatera Utara Province, Indonesia	3° 16' 18.388" N	99° 15' 49.494" E	0.24	0.24	4.32	No	10 Oktober 2022
252	Rubiarto	Laut Tador Village, Laut Tador Sub District, Batu Bara District, Sumatera Utara Province, Indonesia	3° 15' 22.662" N	99° 14' 37.997" E	0.67	0.67	12.06	No	10 Oktober 2022
253	Rudiman Manurung 1	Laut Tador Village, Laut Tador Sub District, Batu Bara District, Sumatera Utara Province, Indonesia	3° 15' 27.080" N	99° 14' 31.256" E	0.55	0.55	9.90	No	10 Oktober 2022
	Rudiman Manurung 2	Laut Tador Village, Laut Tador Sub District, Batu Bara District, Sumatera Utara Province, Indonesia	3° 15' 31.392" N	99° 14' 41.917" E	0.19	0.19	3.42	No	10 Oktober 2022
	Rudiman Manurung 3	Laut Tador Village, Laut Tador Sub District, Batu Bara District, Sumatera Utara Province, Indonesia	3° 16' 17.175" N	99° 15' 35.957" E	0.29	0.29	5.22	No	10 Oktober 2022
254	Rusdiana Sinaga 1	Laut Tador Village, Laut Tador Sub District, Batu Bara District, Sumatera Utara Province, Indonesia	3° 16' 3.343" N	99° 15' 48.470" E	0.34	0.34	6.12	No	10 Oktober 2022
	Rusdiana Sinaga 2	Laut Tador Village, Laut Tador Sub District, Batu Bara District, Sumatera Utara Province, Indonesia	3° 16' 0.316" N	99° 15' 52.211" E	0.90	0.90	16.20	No	10 Oktober 2022
	Rusdiana Sinaga 3	Laut Tador Village, Laut Tador Sub District, Batu Bara District, Sumatera Utara Province, Indonesia	3° 17' 59.234" N	99° 15' 40.525" E	2.39	2.39	43.02	No	10 Oktober 2022
255	Ruslan 1	Laut Tador Village, Laut Tador Sub District, Batu Bara District, Sumatera Utara Province, Indonesia	3° 17' 41.472" N	99° 15' 26.252" E	0.45	0.45	8.10	No	10 Oktober 2022
	Ruslan 2	Laut Tador Village, Laut Tador Sub District, Batu Bara District, Sumatera Utara Province, Indonesia	3° 16' 18.490" N	99° 15' 36.812" E	0.26	0.26	4.68	No	10 Oktober 2022
256	Ruslan Gultom	Laut Tador Village, Laut Tador Sub District, Batu Bara District, Sumatera Utara Province, Indonesia	3° 16' 6.693" N	99° 15' 19.477" E	0.51	0.51	9.18	No	10 Oktober 2022
257	Ruslan Sinaga	Laut Tador Village, Laut Tador Sub District, Batu Bara District, Sumatera Utara Province, Indonesia	3° 13' 31.253" N	99° 13' 22.315" E	0.11	0.11	1.98	No	10 Oktober 2022
258	Rusmina Pakpahan	Tanjung Prapat Village, Laut Tador Sub District, Batu Bara District, Sumatera Utara Province, Indonesia	3° 17' 35.416" N	99° 16' 18.305" E	0.40	0.40	7.20	No	10 Oktober 2022
259	Rusnia HTB	Tanjung Kasau Village, Laut Tador Sub District, Batu Bara District, Sumatera Utara Province, Indonesia	3° 15' 4.057" N	99° 14' 12.300" E	0.23	0.23	4.14	No	10 Oktober 2022
260	Ruspina Ompusunggu	Laut Tador Village, Laut Tador Sub District, Batu Bara District, Sumatera Utara Province, Indonesia	3° 16' 9.175" N	99° 15' 21.055" E	0.33	0.33	5.94	No	10 Oktober 2022
261	Sabarruddin Siregar 1	Laut Tador Village, Laut Tador Sub District, Batu Bara District, Sumatera Utara Province, Indonesia	3° 15' 45.549" N	99° 15' 23.828" E	0.50	0.50	9.00	No	10 Oktober 2022
	Sabarruddin Siregar 2	Laut Tador Village, Laut Tador Sub District, Batu Bara District, Sumatera Utara Province, Indonesia	3° 15' 42.063" N	99° 14' 44.223" E	2.17	2.17	39.06	No	10 Oktober 2022
262	Safari	Laut Tador Village, Laut Tador Sub District, Batu Bara District, Sumatera Utara Province, Indonesia	3° 13' 22.861" N	99° 13' 21.599" E	1.02	1.02	18.36	No	10 Oktober 2022
263	Sahadi	Tanjung Prapat Village, Laut Tador Sub District, Batu Bara District, Sumatera Utara Province, Indonesia	3° 15' 20.593" N	99° 14' 0.185" E	1.65	1.65	29.70	No	10 Oktober 2022
264	Sahat Ginomgom Sianturi	Laut Tador Village, Laut Tador Sub District, Batu Bara District, Sumatera Utara Province, Indonesia	3° 15' 56.417" N	99° 15' 7.959" E	0.22	0.22	3.96	No	10 Oktober 2022
265	Sahroji	Laut Tador Village, Laut Tador Sub District, Batu Bara District, Sumatera Utara Province, Indonesia	3° 15' 21.884" N	99° 14' 29.489" E	0.28	0.28	5.04	No	10 Oktober 2022
266	Saida br Sihombing	Laut Tador Village, Laut Tador Sub District, Batu Bara District, Sumatera Utara Province, Indonesia	3° 17' 27.506" N	99° 15' 35.051" E	0.66	0.66	11.88	No	10 Oktober 2022
267	Samian Amri Purba 1	Tanjung Kasau Village, Laut Tador Sub District, Batu Bara District, Sumatera Utara Province, Indonesia	3° 17' 21.653" N	99° 15' 56.769" E	0.89	0.89	16.02	No	10 Oktober 2022
	Samian Amri Purba 2	Tanjung Kasau Village, Laut Tador Sub District, Batu Bara District, Sumatera Utara Province, Indonesia							

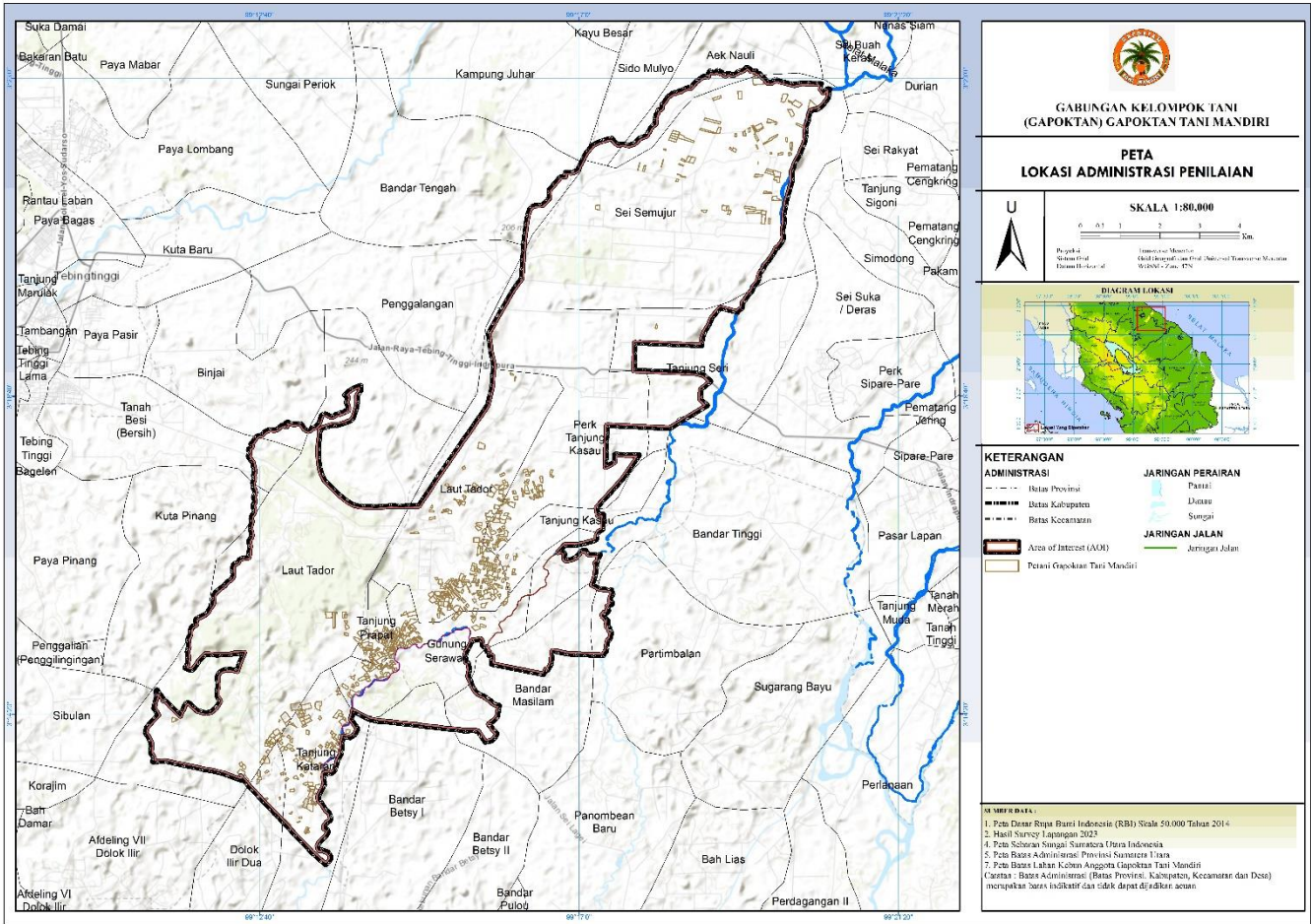
	Samian Amri Purba 3	Tanjung Kasau Village, Laut Tador Sub District, Batu Bara District, Sumatera Utara Province, Indonesia	3° 17' 28.200" N	99° 16' 0.678" E	0.73	0.73	13.14	No	10 Oktober 2022
	Samian Amri Purba 4	Tanjung Kasau Village, Laut Tador Sub District, Batu Bara District, Sumatera Utara Province, Indonesia	3° 16' 19.906" N	99° 15' 35.763" E	0.36	0.36	6.48	No	10 Oktober 2022
268	Samila	Kandangan Village, Laut Tador Sub District, Batu Bara District, Sumatera Utara Province, Indonesia	3° 22' 46.309" N	99° 19' 11.138" E	1.66	1.66	29.88	No	10 Oktober 2022
269	Samingan	Tanjung Kasau Village, Laut Tador Sub District, Batu Bara District, Sumatera Utara Province, Indonesia	3° 17' 35.351" N	99° 15' 56.672" E	0.28	0.28	5.04	No	10 Oktober 2022
270	Samino 1	Tanjung Kasau Village, Laut Tador Sub District, Batu Bara District, Sumatera Utara Province, Indonesia	3° 16' 42.466" N	99° 15' 36.636" E	1.74	1.74	31.32	No	10 Oktober 2022
	Samino 2	Laut Tador Village, Laut Tador Sub District, Batu Bara District, Sumatera Utara Province, Indonesia	3° 16' 52.704" N	99° 15' 58.772" E	0.44	0.44	7.92	No	10 Oktober 2022
271	Samiran 1	Tanjung Prapat Village, Laut Tador Sub District, Batu Bara District, Sumatera Utara Province, Indonesia	3° 14' 19.198" N	99° 13' 45.989" E	0.68	0.68	12.24	No	10 Oktober 2022
	Samiran 2	Tanjung Prapat Village, Laut Tador Sub District, Batu Bara District, Sumatera Utara Province, Indonesia	3° 14' 16.329" N	99° 13' 48.845" E	0.36	0.36	6.48	No	10 Oktober 2022
272	Sampa Arjuna 1	Tanjung Prapat Village, Laut Tador Sub District, Batu Bara District, Sumatera Utara Province, Indonesia	3° 13' 36.364" N	99° 13' 15.598" E	0.58	0.58	10.44	No	10 Oktober 2022
	Sampa Arjuna 2	Laut Tador Village, Laut Tador Sub District, Batu Bara District, Sumatera Utara Province, Indonesia	3° 14' 43.337" N	99° 13' 56.173" E	0.30	0.30	5.40	No	10 Oktober 2022
273	Samsudin	Laut Tador Village, Laut Tador Sub District, Batu Bara District, Sumatera Utara Province, Indonesia	3° 15' 19.085" N	99° 14' 46.483" E	0.46	0.46	8.28	No	10 Oktober 2022
274	Sandro Sianturi	Laut Tador Village, Laut Tador Sub District, Batu Bara District, Sumatera Utara Province, Indonesia	3° 15' 26.678" N	99° 14' 48.197" E	0.36	0.36	6.48	No	10 Oktober 2022
275	Sania Nasulion	Tanjung Prapat Village, Laut Tador Sub District, Batu Bara District, Sumatera Utara Province, Indonesia	3° 14' 15.436" N	99° 11' 32.495" E	0.19	0.19	3.42	No	10 Oktober 2022
276	Sanli br Haloho	Laut Tador Village, Laut Tador Sub District, Batu Bara District, Sumatera Utara Province, Indonesia	3° 15' 29.731" N	99° 14' 23.155" E	0.25	0.25	4.50	No	10 Oktober 2022
277	Saomaniru Sitohang 1	Laut Tador Village, Laut Tador Sub District, Batu Bara District, Sumatera Utara Province, Indonesia	3° 16' 47.871" N	99° 16' 0.661" E	1.19	1.19	21.42	No	10 Oktober 2022
	Saomaniru Sitohang 2	Perkebunan Tanjung Kasau Village, Laut Tador Sub District, Batu Bara District, Sumatera Utara Province, Indonesia	3° 17' 19.553" N	99° 16' 27.515" E	0.52	0.52	9.36	No	10 Oktober 2022
	Saomaniru Sitohang 3	Perkebunan Tanjung Kasau Village, Laut Tador Sub District, Batu Bara District, Sumatera Utara Province, Indonesia	3° 17' 22.970" N	99° 16' 26.116" E	0.32	0.32	5.76	No	10 Oktober 2022
	Saomaniru Sitohang 4	Perkebunan Tanjung Kasau Village, Laut Tador Sub District, Batu Bara District, Sumatera Utara Province, Indonesia	3° 17' 24.764" N	99° 16' 28.628" E	1.21	1.21	21.78	No	10 Oktober 2022
	Saomaniru Sitohang 5	Perkebunan Tanjung Kasau Village, Laut Tador Sub District, Batu Bara District, Sumatera Utara Province, Indonesia	3° 17' 22.836" N	99° 16' 30.846" E	0.23	0.23	4.14	No	10 Oktober 2022
		Saomaniru Sitohang 6	Perkebunan Tanjung Kasau Village, Laut Tador Sub District, Batu Bara District, Sumatera Utara Province, Indonesia	3° 17' 25.889" N	99° 16' 26.626" E	0.47	0.47	8.46	No
278	Saprizal	Laut Tador Village, Laut Tador Sub District, Batu Bara District, Sumatera Utara Province, Indonesia	3° 17' 14.337" N	99° 15' 21.611" E	0.29	0.29	5.22	No	10 Oktober 2022
279	Sarbaini	Kandangan Village, Laut Tador Sub District, Batu Bara District, Sumatera Utara Province, Indonesia	3° 21' 44.531" N	99° 19' 35.610" E	0.89	0.89	16.02	No	10 Oktober 2022
280	Sardi	Laut Tador Village, Laut Tador Sub District, Batu Bara District, Sumatera Utara Province, Indonesia	3° 15' 36.467" N	99° 15' 1.281" E	0.49	0.49	8.82	No	10 Oktober 2022
281	Sari Purnama Tambunan 1	Laut Tador Village, Laut Tador Sub District, Batu Bara District, Sumatera Utara Province, Indonesia	3° 15' 25.723" N	99° 14' 28.236" E	0.29	0.29	5.22	No	10 Oktober 2022
	Sari Purnama Tambunan 2	Laut Tador Village, Laut Tador Sub District, Batu Bara District, Sumatera Utara Province, Indonesia	3° 15' 17.018" N	99° 14' 26.066" E	0.75	0.75	13.50	No	10 Oktober 2022
	Sari Purnama Tambunan 3	Laut Tador Village, Laut Tador Sub District, Batu Bara District, Sumatera Utara Province, Indonesia	3° 15' 21.894" N	99° 14' 32.883" E	0.52	0.52	9.36	No	10 Oktober 2022
282	Sarلمان Purba	Laut Tador Village, Laut Tador Sub District, Batu Bara District, Sumatera Utara Province, Indonesia	3° 14' 57.423" N	99° 14' 12.511" E	1.14	1.14	20.52	No	10 Oktober 2022
283	Sariani 1	Kandangan Village, Laut Tador Sub District, Batu Bara District, Sumatera Utara Province, Indonesia	3° 21' 42.774" N	99° 19' 35.243" E	1.24	1.24	22.32	No	10 Oktober 2022
	Sariani 2	Kandangan Village, Laut Tador Sub District, Batu Bara District, Sumatera Utara Province, Indonesia	3° 22' 11.711" N	99° 19' 24.501" E	0.86	0.86	15.48	No	10 Oktober 2022
284	Sarifah Saragih	Laut Tador Village, Laut Tador Sub District, Batu Bara District, Sumatera Utara Province, Indonesia	3° 17' 9.546" N	99° 15' 0.268" E	0.24	0.24	4.32	No	10 Oktober 2022
285	Saring	Laut Tador Village, Laut Tador Sub District, Batu Bara District, Sumatera Utara Province, Indonesia	3° 15' 40.850" N	99° 15' 5.737" E	0.55	0.55	9.90	No	10 Oktober 2022
286	Sarino	Tanjung Prapat Village, Laut Tador Sub District, Batu Bara District, Sumatera Utara Province, Indonesia	3° 13' 41.242" N	99° 12' 42.070" E	0.78	0.78	14.04	No	10 Oktober 2022
287	Sarlina Simbolon 1	Laut Tador Village, Laut Tador Sub District, Batu Bara District, Sumatera Utara Province, Indonesia	3° 15' 35.406" N	99° 13' 50.274" E	0.37	0.37	6.66	No	10 Oktober 2022
	Sarlina Simbolon 2	Laut Tador Village, Laut Tador Sub District, Batu Bara District, Sumatera Utara Province, Indonesia	3° 15' 19.289" N	99° 14' 22.195" E	0.34	0.34	6.12	No	10 Oktober 2022
288	Sarno 1	Laut Tador Village, Laut Tador Sub District, Batu Bara District, Sumatera Utara Province, Indonesia	3° 15' 49.837" N	99° 15' 58.082" E	0.36	0.36	6.48	No	10 Oktober 2022
	Sarno 2	Tanjung Prapat Village, Laut Tador Sub District, Batu Bara District, Sumatera Utara Province, Indonesia	3° 13' 52.114" N	99° 13' 1.541" E	0.52	0.52	9.36	No	10 Oktober 2022
	Sarno 3	Tanjung Prapat Village, Laut Tador Sub District, Batu Bara District, Sumatera Utara Province, Indonesia	3° 14' 7.400" N	99° 12' 59.200" E	0.15	0.15	2.70	No	10 Oktober 2022
	Sarno 4	Tanjung Prapat Village, Laut Tador Sub District, Batu Bara District, Sumatera Utara Province, Indonesia	3° 13' 53.707" N	99° 13' 4.293" E	1.32	1.32	23.76	No	10 Oktober 2022
289	Sarpen Purba	Tanjung Prapat Village, Laut Tador Sub District, Batu Bara District, Sumatera Utara Province, Indonesia	3° 13' 8.474" N	99° 13' 26.595" E	0.50	0.50	9.00	No	10 Oktober 2022
290	Sarplan	Tanjung Prapat Village, Laut Tador Sub District, Batu Bara District, Sumatera Utara Province, Indonesia	3° 13' 6.520" N	99° 13' 25.514" E	0.15	0.15	2.70	No	10 Oktober 2022
291	Sastro Jonatan Sihotang	Laut Tador Village, Laut Tador Sub District, Batu Bara District, Sumatera Utara Province, Indonesia	3° 15' 34.035" N	99° 14' 39.606" E	0.14	0.14	2.52	No	10 Oktober 2022
292	Sawaluddin Sitohang 1	Laut Tador Village, Laut Tador Sub District, Batu Bara District, Sumatera Utara Province, Indonesia	3° 15' 20.687" N	99° 14' 49.671" E	0.82	0.82	14.76	No	10 Oktober 2022
	Sawaluddin Sitohang 2	Laut Tador Village, Laut Tador Sub District, Batu Bara District, Sumatera Utara Province, Indonesia	3° 15' 21.615" N	99° 14' 45.040" E	0.26	0.26	4.68	No	10 Oktober 2022
	Sawaluddin Sitohang 3	Laut Tador Village, Laut Tador Sub District, Batu Bara District, Sumatera Utara Province, Indonesia	3° 15' 29.378" N	99° 14' 46.013" E	0.43	0.43	7.74	No	10 Oktober 2022
	Sawaluddin Sitohang 4	Laut Tador Village, Laut Tador Sub District, Batu Bara District, Sumatera Utara Province, Indonesia	3° 15' 23.614" N	99° 14' 36.393" E	0.46	0.46	8.28	No	10 Oktober 2022
293	Sawiji 1	Tanjung Prapat Village, Laut Tador Sub District, Batu Bara District, Sumatera Utara Province, Indonesia	3° 13' 53.623" N	99° 13' 34.852" E	0.44	0.44	7.92	No	10 Oktober 2022
	Sawiji 2	Tanjung Prapat Village, Laut Tador Sub District, Batu Bara District, Sumatera Utara Province, Indonesia	3° 13' 52.858" N	99° 13' 38.860" E	0.53	0.53	9.54	No	10 Oktober 2022
294	Semi 1	Tanjung Prapat Village, Laut Tador Sub District, Batu Bara District, Sumatera Utara Province, Indonesia	3° 13' 49.174" N	99° 12' 46.914" E	0.55	0.55	9.90	No	10 Oktober 2022
	Semi 2	Tanjung Prapat Village, Laut Tador Sub District, Batu Bara District, Sumatera Utara Province, Indonesia	3° 14' 12.648" N	99° 13' 3.255" E	1.14	1.14	20.52	No	10 Oktober 2022
295	Sidik	Tanjung Prapat Village, Laut Tador Sub District, Batu Bara District, Sumatera Utara Province, Indonesia	3° 17' 38.232" N	99° 16' 37.324" E	0.61	0.61	10.98	No	10 Oktober 2022

296	Sihol Marbun 1	Laut Tador Village, Laut Tador Sub District, Batu Bara District, Sumatera Utara Province, Indonesia	3° 16' 10.669" N	99° 15' 52.099" E	0.56	0.56	10.08	No	10 Oktober 2022
	Sihol Marbun 2	Laut Tador Village, Laut Tador Sub District, Batu Bara District, Sumatera Utara Province, Indonesia	3° 16' 8.679" N	99° 15' 46.652" E	0.56	0.56	10.08	No	10 Oktober 2022
	Sihol Marbun 3	Laut Tador Village, Laut Tador Sub District, Batu Bara District, Sumatera Utara Province, Indonesia	3° 16' 13.136" N	99° 15' 44.493" E	0.14	0.14	2.52	No	10 Oktober 2022
	Sihol Marbun 4	Laut Tador Village, Laut Tador Sub District, Batu Bara District, Sumatera Utara Province, Indonesia	3° 16' 9.584" N	99° 15' 35.082" E	0.37	0.37	6.66	No	10 Oktober 2022
297	Sinur Pandiangan	Tanjung Prapat Village, Laut Tador Sub District, Batu Bara District, Sumatera Utara Province, Indonesia	3° 14' 5.913" N	99° 13' 51.865" E	0.82	0.82	14.76	No	10 Oktober 2022
298	Siran 1	Tanjung Prapat Village, Laut Tador Sub District, Batu Bara District, Sumatera Utara Province, Indonesia	3° 12' 43.489" N	99° 13' 19.734" E	0.25	0.25	4.50	No	10 Oktober 2022
	Siran 2	Laut Tador Village, Laut Tador Sub District, Batu Bara District, Sumatera Utara Province, Indonesia	3° 14' 39.928" N	99° 13' 44.037" E	0.55	0.55	9.90	No	10 Oktober 2022
299	Siti Sa'adah	Kandangan Village, Laut Tador Sub District, Batu Bara District, Sumatera Utara Province, Indonesia	3° 22' 3.936" N	99° 19' 24.989" E	0.22	0.22	3.96	No	10 Oktober 2022
300	Soimi 1	Tanjung Prapat Village, Laut Tador Sub District, Batu Bara District, Sumatera Utara Province, Indonesia	3° 13' 54.213" N	99° 12' 49.717" E	0.67	0.67	12.06	No	10 Oktober 2022
	Soimi 2	Tanjung Prapat Village, Laut Tador Sub District, Batu Bara District, Sumatera Utara Province, Indonesia	3° 12' 55.327" N	99° 13' 13.364" E	0.27	0.27	4.86	No	10 Oktober 2022
301	Sopar Manalu 1	Laut Tador Village, Laut Tador Sub District, Batu Bara District, Sumatera Utara Province, Indonesia	3° 16' 14.077" N	99° 15' 34.194" E	0.50	0.50	9.00	No	10 Oktober 2022
	Sopar Manalu 2	Perkebunan Tanjung Kasau Village, Laut Tador Sub District, Batu Bara District, Sumatera Utara Province, Indonesia	3° 17' 3.226" N	99° 15' 48.086" E	2.76	2.76	49.68	No	10 Oktober 2022
302	Sri Dari	Kandangan Village, Laut Tador Sub District, Batu Bara District, Sumatera Utara Province, Indonesia	3° 22' 10.861" N	99° 18' 26.250" E	2.64	2.64	47.52	No	10 Oktober 2022
303	Sri Sulastri Siliinjak	Laut Tador Village, Laut Tador Sub District, Batu Bara District, Sumatera Utara Province, Indonesia	3° 15' 18.565" N	99° 14' 37.158" E	0.13	0.13	2.34	No	10 Oktober 2022
304	Sri Wahyuni	Kandangan Village, Laut Tador Sub District, Batu Bara District, Sumatera Utara Province, Indonesia	3° 22' 13.521" N	99° 19' 7.690" E	0.35	0.35	6.30	No	10 Oktober 2022
305	Sriyani 1	Tanjung Prapat Village, Laut Tador Sub District, Batu Bara District, Sumatera Utara Province, Indonesia	3° 13' 58.218" N	99° 12' 54.285" E	0.45	0.45	8.10	No	10 Oktober 2022
	Sriyani 2	Tanjung Prapat Village, Laut Tador Sub District, Batu Bara District, Sumatera Utara Province, Indonesia	3° 13' 59.693" N	99° 13' 41.502" E	0.39	0.39	7.02	No	10 Oktober 2022
306	Subakir	Tanjung Prapat Village, Laut Tador Sub District, Batu Bara District, Sumatera Utara Province, Indonesia	3° 12' 51.875" N	99° 13' 11.823" E	0.14	0.14	2.52	No	10 Oktober 2022
307	Subur Simamora	Laut Tador Village, Laut Tador Sub District, Batu Bara District, Sumatera Utara Province, Indonesia	3° 15' 45.865" N	99° 15' 27.731" E	0.45	0.45	8.10	No	10 Oktober 2022
308	Sudiarlo Manalu 1	Laut Tador Village, Laut Tador Sub District, Batu Bara District, Sumatera Utara Province, Indonesia	3° 15' 5.406" N	99° 14' 11.010" E	0.39	0.39	7.02	No	10 Oktober 2022
	Sudiarlo Manalu 2	Laut Tador Village, Laut Tador Sub District, Batu Bara District, Sumatera Utara Province, Indonesia	3° 15' 0.264" N	99° 14' 10.004" E	0.98	0.98	17.64	No	10 Oktober 2022
309	Sudirman	Laut Tador Village, Laut Tador Sub District, Batu Bara District, Sumatera Utara Province, Indonesia	3° 15' 48.192" N	99° 15' 14.887" E	0.39	0.39	7.02	No	10 Oktober 2022
310	Sudirto Manalu	Tanjung Prapat Village, Laut Tador Sub District, Batu Bara District, Sumatera Utara Province, Indonesia	3° 14' 57.421" N	99° 14' 6.311" E	1.47	1.47	26.46	No	10 Oktober 2022
311	Sugito	Laut Tador Village, Laut Tador Sub District, Batu Bara District, Sumatera Utara Province, Indonesia	3° 16' 4.934" N	99° 15' 12.970" E	0.55	0.55	9.90	No	10 Oktober 2022
312	Suhadi	Tanjung Prapat Village, Laut Tador Sub District, Batu Bara District, Sumatera Utara Province, Indonesia	3° 13' 24.828" N	99° 12' 38.850" E	0.52	0.52	9.36	No	10 Oktober 2022
313	Suhendra 1	Tanjung Prapat Village, Laut Tador Sub District, Batu Bara District, Sumatera Utara Province, Indonesia	3° 13' 45.040" N	99° 13' 15.851" E	0.24	0.24	4.32	No	10 Oktober 2022
	Suhendra 2	Tanjung Prapat Village, Laut Tador Sub District, Batu Bara District, Sumatera Utara Province, Indonesia	3° 13' 43.857" N	99° 13' 13.930" E	0.52	0.52	9.36	No	10 Oktober 2022
314	Sukanto	Kandangan Village, Laut Tador Sub District, Batu Bara District, Sumatera Utara Province, Indonesia	3° 21' 14.022" N	99° 18' 58.410" E	1.32	1.32	23.76	No	10 Oktober 2022
315	Sukeni	Tanjung Prapat Village, Laut Tador Sub District, Batu Bara District, Sumatera Utara Province, Indonesia	3° 13' 56.464" N	99° 12' 57.359" E	0.45	0.45	8.10	No	10 Oktober 2022
316	Sukinem	Tanjung Prapat Village, Laut Tador Sub District, Batu Bara District, Sumatera Utara Province, Indonesia	3° 14' 21.743" N	99° 13' 10.572" E	0.65	0.65	11.70	No	10 Oktober 2022
317	Sulasmi	Kandangan Village, Laut Tador Sub District, Batu Bara District, Sumatera Utara Province, Indonesia	3° 21' 4.680" N	99° 19' 30.294" E	2.19	2.19	39.42	No	10 Oktober 2022
318	Sullyem	Tanjung Prapat Village, Laut Tador Sub District, Batu Bara District, Sumatera Utara Province, Indonesia	3° 13' 27.674" N	99° 12' 28.940" E	1.00	1.00	18.00	No	10 Oktober 2022
319	Sumardi	Tanjung Prapat Village, Laut Tador Sub District, Batu Bara District, Sumatera Utara Province, Indonesia	3° 13' 55.760" N	99° 13' 43.611" E	0.37	0.37	6.66	No	10 Oktober 2022
320	Sumarno 1	Kandangan Village, Laut Tador Sub District, Batu Bara District, Sumatera Utara Province, Indonesia	3° 22' 17.808" N	99° 19' 18.836" E	0.46	0.46	8.28	No	10 Oktober 2022
	Sumarno 2	Kandangan Village, Laut Tador Sub District, Batu Bara District, Sumatera Utara Province, Indonesia	3° 19' 36.719" N	99° 18' 3.065" E	0.44	0.44	7.92	No	10 Oktober 2022
321	Sunardi 1	Laut Tador Village, Laut Tador Sub District, Batu Bara District, Sumatera Utara Province, Indonesia	3° 16' 17.673" N	99° 15' 51.881" E	0.22	0.22	3.96	No	10 Oktober 2022
	Sunardi 2	Tanjung Prapat Village, Laut Tador Sub District, Batu Bara District, Sumatera Utara Province, Indonesia	3° 14' 14.596" N	99° 12' 56.155" E	0.08	0.08	1.44	No	10 Oktober 2022
	Sunardi 3	Tanjung Prapat Village, Laut Tador Sub District, Batu Bara District, Sumatera Utara Province, Indonesia	3° 14' 21.726" N	99° 13' 16.138" E	0.49	0.49	8.82	No	10 Oktober 2022
	Sunardi 4	Tanjung Prapat Village, Laut Tador Sub District, Batu Bara District, Sumatera Utara Province, Indonesia	3° 16' 55.511" N	99° 15' 38.952" E	0.99	0.99	17.82	No	10 Oktober 2022
322	Sunardi Batubara	Laut Tador Village, Laut Tador Sub District, Batu Bara District, Sumatera Utara Province, Indonesia	3° 16' 18.371" N	99° 15' 50.766" E	0.21	0.21	3.78	No	10 Oktober 2022
323	Supatman	Kandangan Village, Laut Tador Sub District, Batu Bara District, Sumatera Utara Province, Indonesia	3° 21' 11.503" N	99° 18' 42.287" E	0.61	0.61	10.98	No	10 Oktober 2022
324	Supiran	Laut Tador Village, Laut Tador Sub District, Batu Bara District, Sumatera Utara Province, Indonesia	3° 14' 53.776" N	99° 14' 19.297" E	0.36	0.36	6.48	No	10 Oktober 2022
325	Supiran Purba 1	Tanjung Prapat Village, Laut Tador Sub District, Batu Bara District, Sumatera Utara Province, Indonesia	3° 13' 34.106" N	99° 13' 31.468" E	0.17	0.17	3.06	No	10 Oktober 2022
	Supiran Purba 2	Tanjung Prapat Village, Laut Tador Sub District, Batu Bara District, Sumatera Utara Province, Indonesia	3° 14' 19.894" N	99° 13' 43.381" E	2.01	2.01	36.18	No	10 Oktober 2022
326	Supratman 1	Kandangan Village, Laut Tador Sub District, Batu Bara District, Sumatera Utara Province, Indonesia	3° 22' 18.070" N	99° 19' 27.538" E	0.57	0.57	10.26	No	10 Oktober 2022
	Supratman 2	Kandangan Village, Laut Tador Sub District, Batu Bara District, Sumatera Utara Province, Indonesia	3° 21' 50.541" N	99° 19' 25.935" E	0.05	0.05	0.90	No	10 Oktober 2022
327	Supriadi	Laut Tador Village, Laut Tador Sub District, Batu Bara District, Sumatera Utara Province, Indonesia	3° 17' 13.051" N	99° 15' 22.014" E	0.10	0.10	1.80	No	10 Oktober 2022
328	Supriyanto	Laut Tador Village, Laut Tador Sub District, Batu Bara District, Sumatera Utara Province, Indonesia	3° 16' 20.954" N	99° 16' 2.583" E	0.14	0.14	2.52	No	10 Oktober 2022
329	Supriyanto Sugito	Kandangan Village, Laut Tador Sub District, Batu Bara District, Sumatera Utara Province, Indonesia	3° 21' 21.516" N	99° 19' 40.462" E	1.68	1.68	30.24	No	10 Oktober 2022
330	Suradi	Tanjung Prapat Village, Laut Tador Sub District, Batu Bara District, Sumatera Utara Province, Indonesia	3° 13' 58.542" N	99° 13' 5.864" E	0.48	0.48	8.64	No	10 Oktober 2022
331	Surahman 1	Kandangan Village, Laut Tador Sub District, Batu Bara District, Sumatera Utara Province, Indonesia	3° 21' 49.266" N	99° 18' 23.151" E	0.27	0.27	4.86	No	10 Oktober 2022
	Surahman 2	Kandangan Village, Laut Tador Sub District, Batu Bara District, Sumatera Utara Province, Indonesia	3° 21' 36.546" N	99° 18' 19.985" E	0.28	0.28	5.04	No	10 Oktober 2022

	Surahman 3	Kandangan Village, Laut Tador Sub District, Batu Bara District, Sumatera Utara Province, Indonesia	3° 21' 52.969" N	99° 18' 24.998" E	0.44	0.44	7.92	No	10 Oktober 2022
332	Surandi	Kandangan Village, Laut Tador Sub District, Batu Bara District, Sumatera Utara Province, Indonesia	3° 22' 18.608" N	99° 19' 22.209" E	0.32	0.32	5.76	No	10 Oktober 2022
333	Suratni	Laut Tador Village, Laut Tador Sub District, Batu Bara District, Sumatera Utara Province, Indonesia	3° 15' 42.672" N	99° 15' 8.404" E	0.35	0.35	6.30	No	10 Oktober 2022
334	Suriani	Laut Tador Village, Laut Tador Sub District, Batu Bara District, Sumatera Utara Province, Indonesia	3° 15' 51.337" N	99° 15' 4.097" E	0.40	0.40	7.20	No	10 Oktober 2022
335	Suryano 1	Tanjung Prapat Village, Laut Tador Sub District, Batu Bara District, Sumatera Utara Province, Indonesia	3° 13' 46.037" N	99° 13' 21.257" E	0.43	0.43	7.74	No	10 Oktober 2022
	Suryano 2	Tanjung Prapat Village, Laut Tador Sub District, Batu Bara District, Sumatera Utara Province, Indonesia	3° 13' 7.121" N	99° 13' 17.525" E	2.24	2.24	40.32	No	10 Oktober 2022
	Suryano 3	Tanjung Prapat Village, Laut Tador Sub District, Batu Bara District, Sumatera Utara Province, Indonesia	3° 13' 29.940" N	99° 13' 14.503" E	0.31	0.31	5.58	No	10 Oktober 2022
336	Suryanti	Kandangan Village, Laut Tador Sub District, Batu Bara District, Sumatera Utara Province, Indonesia	3° 22' 9.681" N	99° 19' 49.114" E	0.47	0.47	8.46	No	10 Oktober 2022
337	Suryono 1	Laut Tador Village, Laut Tador Sub District, Batu Bara District, Sumatera Utara Province, Indonesia	3° 14' 36.290" N	99° 13' 44.298" E	0.25	0.25	4.50	No	10 Oktober 2022
	Suryono 2	Laut Tador Village, Laut Tador Sub District, Batu Bara District, Sumatera Utara Province, Indonesia	3° 14' 38.290" N	99° 14' 0.842" E	0.26	0.26	4.68	No	10 Oktober 2022
338	Sular K 1	Laut Tador Village, Laut Tador Sub District, Batu Bara District, Sumatera Utara Province, Indonesia	3° 16' 48.119" N	99° 14' 44.108" E	0.19	0.19	3.42	No	10 Oktober 2022
	Sular K 2	Laut Tador Village, Laut Tador Sub District, Batu Bara District, Sumatera Utara Province, Indonesia	3° 16' 48.301" N	99° 14' 47.690" E	0.41	0.41	7.38	No	10 Oktober 2022
339	Sutresno	Laut Tador Village, Laut Tador Sub District, Batu Bara District, Sumatera Utara Province, Indonesia	3° 15' 53.875" N	99° 15' 12.575" E	1.00	1.00	18.00	No	10 Oktober 2022
340	Sutrisno 1	Laut Tador Village, Laut Tador Sub District, Batu Bara District, Sumatera Utara Province, Indonesia	3° 17' 34.699" N	99° 16' 37.996" E	0.34	0.34	6.12	No	10 Oktober 2022
	Sutrisno 2	Laut Tador Village, Laut Tador Sub District, Batu Bara District, Sumatera Utara Province, Indonesia	3° 16' 50.809" N	99° 15' 56.168" E	0.34	0.34	6.12	No	10 Oktober 2022
	Sutrisno 3	Tanjung Kasau Village, Laut Tador Sub District, Batu Bara District, Sumatera Utara Province, Indonesia	3° 15' 52.929" N	99° 15' 15.470" E	1.00	1.00	18.00	No	10 Oktober 2022
341	Suwardi	Kandangan Village, Laut Tador Sub District, Batu Bara District, Sumatera Utara Province, Indonesia	3° 21' 14.117" N	99° 19' 19.252" E	1.44	1.44	25.92	No	10 Oktober 2022
342	Suwono	Laut Tador Village, Laut Tador Sub District, Batu Bara District, Sumatera Utara Province, Indonesia	3° 16' 30.088" N	99° 16' 9.362" E	0.17	0.17	3.06	No	10 Oktober 2022
343	Suyatno	Kandangan Village, Laut Tador Sub District, Batu Bara District, Sumatera Utara Province, Indonesia	3° 21' 13.897" N	99° 19' 1.150" E	0.55	0.55	9.90	No	10 Oktober 2022
344	Swandi Purba 1	Tanjung Prapat Village, Laut Tador Sub District, Batu Bara District, Sumatera Utara Province, Indonesia	3° 13' 33.858" N	99° 13' 17.752" E	0.60	0.60	10.80	No	10 Oktober 2022
	Swandi Purba 2	Laut Tador Village, Laut Tador Sub District, Batu Bara District, Sumatera Utara Province, Indonesia	3° 15' 2.133" N	99° 14' 6.591" E	1.79	1.79	32.22	No	10 Oktober 2022
	Swandi Purba 3	Laut Tador Village, Laut Tador Sub District, Batu Bara District, Sumatera Utara Province, Indonesia	3° 15' 25.494" N	99° 14' 4.969" E	5.50	5.50	99.00	No	10 Oktober 2022
345	Swarly	Laut Tador Village, Laut Tador Sub District, Batu Bara District, Sumatera Utara Province, Indonesia	3° 16' 7.856" N	99° 15' 20.126" E	0.35	0.35	6.30	No	10 Oktober 2022
346	Syafri Ramadani	Laut Tador Village, Laut Tador Sub District, Batu Bara District, Sumatera Utara Province, Indonesia	3° 15' 55.468" N	99° 15' 5.958" E	0.61	0.61	10.98	No	10 Oktober 2022
347	Syafrijal	Laut Tador Village, Laut Tador Sub District, Batu Bara District, Sumatera Utara Province, Indonesia	3° 17' 14.117" N	99° 15' 23.998" E	0.25	0.25	4.50	No	10 Oktober 2022
348	Syahriaman Saragih	Tanjung Prapat Village, Laut Tador Sub District, Batu Bara District, Sumatera Utara Province, Indonesia	3° 13' 20.617" N	99° 13' 28.334" E	1.95	1.95	35.10	No	10 Oktober 2022
349	Syafull Bahri 1	Laut Tador Village, Laut Tador Sub District, Batu Bara District, Sumatera Utara Province, Indonesia	3° 15' 8.578" N	99° 14' 18.040" E	1.10	1.10	19.80	No	10 Oktober 2022
	Syafull Bahri 2	Laut Tador Village, Laut Tador Sub District, Batu Bara District, Sumatera Utara Province, Indonesia	3° 15' 2.448" N	99° 14' 14.059" E	0.68	0.68	12.24	No	10 Oktober 2022
	Syafull Bahri 3	Tanjung Prapat Village, Laut Tador Sub District, Batu Bara District, Sumatera Utara Province, Indonesia	3° 13' 58.416" N	99° 13' 44.669" E	0.52	0.52	9.36	No	10 Oktober 2022
	Syafull Bahri 4	Laut Tador Village, Laut Tador Sub District, Batu Bara District, Sumatera Utara Province, Indonesia	3° 14' 34.433" N	99° 13' 54.056" E	0.56	0.56	10.08	No	10 Oktober 2022
350	Syarel	Kandangan Village, Laut Tador Sub District, Batu Bara District, Sumatera Utara Province, Indonesia	3° 21' 58.269" N	99° 19' 44.320" E	0.57	0.57	10.26	No	10 Oktober 2022
351	Tahi Siregar	Laut Tador Village, Laut Tador Sub District, Batu Bara District, Sumatera Utara Province, Indonesia	3° 15' 28.448" N	99° 14' 24.114" E	0.26	0.26	4.68	No	10 Oktober 2022
352	Tamsil Husni 1	Kandangan Village, Laut Tador Sub District, Batu Bara District, Sumatera Utara Province, Indonesia	3° 22' 38.976" N	99° 19' 57.562" E	2.57	2.57	46.26	No	10 Oktober 2022
	Tamsil Husni 2	Kandangan Village, Laut Tador Sub District, Batu Bara District, Sumatera Utara Province, Indonesia	3° 22' 44.086" N	99° 19' 47.265" E	2.32	2.32	41.76	No	10 Oktober 2022
353	Tariono	Tanjung Prapat Village, Laut Tador Sub District, Batu Bara District, Sumatera Utara Province, Indonesia	3° 13' 31.825" N	99° 12' 25.202" E	2.18	2.18	39.24	No	10 Oktober 2022
354	Teguh	Laut Tador Village, Laut Tador Sub District, Batu Bara District, Sumatera Utara Province, Indonesia	3° 16' 17.330" N	99° 16' 6.863" E	0.49	0.49	8.82	No	10 Oktober 2022
355	Teti Marpaung	Laut Tador Village, Laut Tador Sub District, Batu Bara District, Sumatera Utara Province, Indonesia	3° 15' 41.334" N	99° 13' 36.558" E	2.51	2.51	45.18	No	10 Oktober 2022
356	Tianur Tampubolon	Laut Tador Village, Laut Tador Sub District, Batu Bara District, Sumatera Utara Province, Indonesia	3° 15' 25.104" N	99° 14' 33.837" E	0.21	0.21	3.78	No	10 Oktober 2022
357	Tinour Siburian	Laut Tador Village, Laut Tador Sub District, Batu Bara District, Sumatera Utara Province, Indonesia	3° 14' 59.555" N	99° 14' 25.989" E	0.53	0.53	9.54	No	10 Oktober 2022
358	Tioria Manurung 1	Laut Tador Village, Laut Tador Sub District, Batu Bara District, Sumatera Utara Province, Indonesia	3° 16' 42.306" N	99° 16' 0.709" E	0.48	0.48	8.64	No	10 Oktober 2022
	Tioria Manurung 2	Perkebunan Tanjung Kasau Village, Laut Tador Sub District, Batu Bara District, Sumatera Utara Province, Indonesia	3° 17' 0.286" N	99° 16' 2.770" E	0.53	0.53	9.54	No	10 Oktober 2022
359	Tiraman Tampubolon	Laut Tador Village, Laut Tador Sub District, Batu Bara District, Sumatera Utara Province, Indonesia	3° 15' 13.633" N	99° 14' 9.937" E	0.12	0.12	2.16	No	10 Oktober 2022
360	Tiur Butar-Butar	Laut Tador Village, Laut Tador Sub District, Batu Bara District, Sumatera Utara Province, Indonesia	3° 15' 58.556" N	99° 15' 39.013" E	0.40	0.40	7.20	No	10 Oktober 2022
361	Togar Malau	Laut Tador Village, Laut Tador Sub District, Batu Bara District, Sumatera Utara Province, Indonesia	3° 15' 35.322" N	99° 14' 39.070" E	0.31	0.31	5.58	No	10 Oktober 2022
362	Tolok	Tanjung Prapat Village, Laut Tador Sub District, Batu Bara District, Sumatera Utara Province, Indonesia	3° 13' 54.587" N	99° 12' 46.001" E	0.56	0.56	10.08	No	10 Oktober 2022
363	Tuan Sibarani	Laut Tador Village, Laut Tador Sub District, Batu Bara District, Sumatera Utara Province, Indonesia	3° 16' 28.314" N	99° 15' 53.260" E	0.70	0.70	12.60	No	10 Oktober 2022
364	Tumpak Situmorang	Laut Tador Village, Laut Tador Sub District, Batu Bara District, Sumatera Utara Province, Indonesia	3° 16' 45.486" N	99° 15' 54.238" E	0.36	0.36	6.48	No	10 Oktober 2022
365	Tunggul Ompusunggu 1	Laut Tador Village, Laut Tador Sub District, Batu Bara District, Sumatera Utara Province, Indonesia	3° 15' 30.355" N	99° 14' 42.306" E	0.26	0.26	4.68	No	10 Oktober 2022
	Tunggul Ompusunggu 2	Laut Tador Village, Laut Tador Sub District, Batu Bara District, Sumatera Utara Province, Indonesia	3° 15' 25.021" N	99° 14' 27.013" E	0.39	0.39	7.02	No	10 Oktober 2022
366	Tunut	Laut Tador Village, Laut Tador Sub District, Batu Bara District, Sumatera Utara Province, Indonesia	3° 15' 53.519" N	99° 15' 1.126" E	1.78	1.78	32.04	No	10 Oktober 2022
367	Valentina Simbolon	Laut Tador Village, Laut Tador Sub District, Batu Bara District, Sumatera Utara Province, Indonesia	3° 15' 26.519" N	99° 14' 15.584" E	1.29	1.29	23.22	No	10 Oktober 2022
368	Wagiman 1	Tanjung Prapat Village, Laut Tador Sub District, Batu Bara District, Sumatera Utara Province, Indonesia	3° 13' 31.471" N	99° 12' 39.367" E	1.00	1.00	18.00	No	10 Oktober 2022

	Wagiman 2	Tanjung Prapat Village, Laut Tador Sub District, Batu Bara District, Sumatera Utara Province, Indonesia	3° 21' 10.025" N	99° 19' 30.466" E	1.06	1.06	19.08	No	10 Oktober 2022
369	Wagiman 1	Laut Tador Village, Laut Tador Sub District, Batu Bara District, Sumatera Utara Province, Indonesia	3° 16' 10.062" N	99° 15' 17.224" E	0.38	0.38	6.84	No	10 Oktober 2022
	Wagiman 2	Laut Tador Village, Laut Tador Sub District, Batu Bara District, Sumatera Utara Province, Indonesia	3° 16' 8.041" N	99° 15' 13.185" E	0.60	0.60	10.80	No	10 Oktober 2022
	Wagiman 3	Laut Tador Village, Laut Tador Sub District, Batu Bara District, Sumatera Utara Province, Indonesia	3° 16' 3.462" N	99° 15' 8.854" E	0.60	0.60	10.80	No	10 Oktober 2022
	Wagito 1	Tanjung Prapat Village, Laut Tador Sub District, Batu Bara District, Sumatera Utara Province, Indonesia	3° 13' 46.139" N	99° 13' 9.886" E	0.18	0.18	3.24	No	10 Oktober 2022
370	Wagito 2	Tanjung Prapat Village, Laut Tador Sub District, Batu Bara District, Sumatera Utara Province, Indonesia	3° 14' 2.548" N	99° 12' 58.384" E	0.34	0.34	6.12	No	10 Oktober 2022
	Wakijan 1	Tanjung Prapat Village, Laut Tador Sub District, Batu Bara District, Sumatera Utara Province, Indonesia	3° 14' 5.165" N	99° 12' 53.697" E	1.90	1.90	34.20	No	10 Oktober 2022
371	Wakijan 2	Tanjung Prapat Village, Laut Tador Sub District, Batu Bara District, Sumatera Utara Province, Indonesia	3° 13' 59.495" N	99° 12' 56.674" E	0.50	0.50	9.00	No	10 Oktober 2022
	Wakijan 3	Tanjung Prapat Village, Laut Tador Sub District, Batu Bara District, Sumatera Utara Province, Indonesia	3° 14' 49.083" N	99° 14' 3.554" E	1.42	1.42	25.56	No	10 Oktober 2022
	Waluyo 1	Tanjung Kasau Village, Laut Tador Sub District, Batu Bara District, Sumatera Utara Province, Indonesia	3° 15' 53.124" N	99° 15' 8.593" E	0.71	0.71	12.78	No	10 Oktober 2022
372	Waluyo 2	Laut Tador Village, Laut Tador Sub District, Batu Bara District, Sumatera Utara Province, Indonesia	3° 16' 55.590" N	99° 15' 46.207" E	0.84	0.84	15.12	No	10 Oktober 2022
	Wantoro	Tanjung Prapat Village, Laut Tador Sub District, Batu Bara District, Sumatera Utara Province, Indonesia	3° 13' 57.753" N	99° 12' 45.300" E	0.21	0.21	3.78	No	10 Oktober 2022
374	Waris	Tanjung Kasau Village, Laut Tador Sub District, Batu Bara District, Sumatera Utara Province, Indonesia	3° 17' 25.744" N	99° 15' 53.273" E	1.30	1.30	23.40	No	10 Oktober 2022
375	Wartini 1	Laut Tador Village, Laut Tador Sub District, Batu Bara District, Sumatera Utara Province, Indonesia	3° 15' 3.342" N	99° 14' 18.828" E	2.68	2.68	48.24	No	10 Oktober 2022
	Wartini 2	Tanjung Prapat Village, Laut Tador Sub District, Batu Bara District, Sumatera Utara Province, Indonesia	3° 13' 37.132" N	99° 13' 25.873" E	1.57	1.57	28.26	No	10 Oktober 2022
	Wartini 3	Tanjung Prapat Village, Laut Tador Sub District, Batu Bara District, Sumatera Utara Province, Indonesia	3° 13' 38.944" N	99° 12' 24.937" E	0.67	0.67	12.06	No	10 Oktober 2022
	Wartini 4	Tanjung Prapat Village, Laut Tador Sub District, Batu Bara District, Sumatera Utara Province, Indonesia	3° 13' 37.828" N	99° 13' 30.270" E	0.16	0.16	2.88	No	10 Oktober 2022
	Wartini 5	Tanjung Prapat Village, Laut Tador Sub District, Batu Bara District, Sumatera Utara Province, Indonesia	3° 14' 2.648" N	99° 13' 40.350" E	0.63	0.63	11.34	No	10 Oktober 2022
	Wartini 6	Tanjung Prapat Village, Laut Tador Sub District, Batu Bara District, Sumatera Utara Province, Indonesia	3° 14' 37.348" N	99° 13' 55.469" E	1.48	1.48	26.64	No	10 Oktober 2022
376	Wasni	Tanjung Prapat Village, Laut Tador Sub District, Batu Bara District, Sumatera Utara Province, Indonesia	3° 13' 57.127" N	99° 12' 46.796" E	0.33	0.33	5.94	No	10 Oktober 2022
377	Widawati Sitorus	Laut Tador Village, Laut Tador Sub District, Batu Bara District, Sumatera Utara Province, Indonesia	3° 16' 17.654" N	99° 15' 38.678" E	0.33	0.33	5.94	No	10 Oktober 2022
378	Wilpritua Tampubolon	Laut Tador Village, Laut Tador Sub District, Batu Bara District, Sumatera Utara Province, Indonesia	3° 14' 52.362" N	99° 14' 24.680" E	0.70	0.70	12.60	No	10 Oktober 2022
379	Yusmawati 1	Laut Tador Village, Laut Tador Sub District, Batu Bara District, Sumatera Utara Province, Indonesia	3° 15' 52.923" N	99° 15' 25.928" E	0.65	0.65	11.70	No	10 Oktober 2022
	Yusmawati 10	Laut Tador Village, Laut Tador Sub District, Batu Bara District, Sumatera Utara Province, Indonesia	3° 17' 22.831" N	99° 15' 30.033" E	0.28	0.28	5.04	No	10 Oktober 2022
	Yusmawati 11	Laut Tador Village, Laut Tador Sub District, Batu Bara District, Sumatera Utara Province, Indonesia	3° 17' 17.357" N	99° 15' 26.659" E	0.58	0.58	10.44	No	10 Oktober 2022
	Yusmawati 2	Laut Tador Village, Laut Tador Sub District, Batu Bara District, Sumatera Utara Province, Indonesia	3° 16' 5.560" N	99° 15' 18.645" E	0.29	0.29	5.22	No	10 Oktober 2022
	Yusmawati 3	Perkebunan Tanjung Kasau Village, Laut Tador Sub District, Batu Bara District, Sumatera Utara Province, Indonesia	3° 17' 15.698" N	99° 15' 58.959" E	0.18	0.18	3.24	No	10 Oktober 2022
	Yusmawati 4	Perkebunan Tanjung Kasau Village, Laut Tador Sub District, Batu Bara District, Sumatera Utara Province, Indonesia	3° 17' 18.595" N	99° 15' 59.115" E	0.21	0.21	3.78	No	10 Oktober 2022
	Yusmawati 5	Perkebunan Tanjung Kasau Village, Laut Tador Sub District, Batu Bara District, Sumatera Utara Province, Indonesia	3° 17' 14.886" N	99° 15' 57.232" E	0.13	0.13	2.34	No	10 Oktober 2022
	Yusmawati 6	Perkebunan Tanjung Kasau Village, Laut Tador Sub District, Batu Bara District, Sumatera Utara Province, Indonesia	3° 17' 13.067" N	99° 15' 59.975" E	0.17	0.17	3.06	No	10 Oktober 2022
	Yusmawati 7	Perkebunan Tanjung Kasau Village, Laut Tador Sub District, Batu Bara District, Sumatera Utara Province, Indonesia	3° 17' 15.555" N	99° 16' 2.172" E	0.31	0.31	5.58	No	10 Oktober 2022
	Yusmawati 8	Laut Tador Village, Laut Tador Sub District, Batu Bara District, Sumatera Utara Province, Indonesia	3° 17' 22.851" N	99° 15' 36.323" E	0.30	0.30	5.40	No	10 Oktober 2022
Yusmawati 9	Laut Tador Village, Laut Tador Sub District, Batu Bara District, Sumatera Utara Province, Indonesia	3° 17' 22.875" N	99° 15' 31.588" E	0.15	0.15	2.70	No	10 Oktober 2022	
Total					421.83	421.83	7.592.94		

Peta lokasi untuk unit sertifikasi adalah:



Mutuagung Lestari, atau yang disebut juga Mutu Certification International (MUTU), bermula sebagai lembaga inspeksi, laboratorium dan sertifikasi sejak tahun 1990. Merupakan Perusahaan Private Nasional yang didukung oleh sumber daya manusia yang profesional dengan komitmen tinggi serta telah diakui secara Nasional dan Internasional. Sejak Juni 2003, MUTU telah mendapatkan pengakuan dari Menteri Pertanian, Kehutanan dan Perikanan Jepang sebagai Organisasi Sertifikasi Asing yang terdaftar atau Registered Overseas Certification Body (ROCB) yang bertugas memberikan sertifikat terhadap produk yang memenuhi persyaratan Japan Agricultural Standard (JAS), dimana wilayah yang dibawah meliputi Indonesia, Myanmar, Kamboja, Malaysia, Vietnam, Timor Leste, Philipina, Papua Nugini, dan China. Dengan pengakuan ini, MUTU merupakan anggota ROCB pertama di Asia. Komite Akreditasi Nasional (KAN) telah mengakreditasi MUTU sebagai Lembaga sertifikasi Sistem Manajemen Mutu (ISO 9001:2015) dan Lembaga Sertifikasi Sistem Manajemen Lingkungan (ISO 14001:2015). Lembaga Ekolabel Indonesia (LEI) juga telah mengakreditasi MUTU sebagai Lembaga sertifikasi Pengelolaan Hutan Lestari, Lembaga Sertifikasi Indonesian Sustainable Palm Oil (ISPO). Sejak Maret 2014 MUTU telah terakreditasi oleh Accreditation Services International (ASI) sebagai lembaga sertifikasi RSPO.

Tim auditor untuk penilaian sertifikasi akan dipimpin oleh **Leonada** dan tim auditor lainnya dari PT Mutuagung Lestari, terdiri dari:

Tim Auditor	Peran Audit	Kualifikasi dan Pengalaman
Leonada	Kesejahteraan pekerja, SMK3	Sarjana Pertanian untuk program studi pemuliaan tanaman dan teknologi perbenihan, Jurusan Agronomi, Fakultas Pertanian Institut Pertanian Bogor. Memiliki pengalaman lebih dari lima tahun bekerja sebagai staf operasi perkebunan dan keberlanjutan di perusahaan swasta perkebunan kelapa sawit Indonesia dan saat ini bekerja di lembaga sertifikasi independen sebagai auditor. Pelatihan yang pernah diikuti adalah: pelatihan lead auditor minyak sawit berkelanjutan Indonesia (ISPO), pelatihan lead auditor RSPO, pelatihan RSPO SCCS, SA 8000, ISO 17021; 2011, ISO 17065; 2012, ISO 19011; 2011, auditor utama ISO 9001; 2008, ISO 14001; 2005, pelatihan program pengembangan manajemen agronomi, pelatihan analisis solusi dasar operasional, pelatihan pengelolaan hama terpadu (IPM), pelatihan penggunaan pestisida terbatas, pelatihan pengelolaan limbah pestisida dan pupuk, pelatihan mediasi dan penyelesaian konflik, sosial dan pekerja RSPO pelatihan kesejahteraan, pelatihan spesialis keselamatan umum, auditor sistem manajemen kesehatan dan keselamatan (SMK3).
Ririn Sipayung	Aspek Lingkungan, Praktik Terbaik Budidaya dan K3	Pengalaman bekerja sebagai Sustainability Assistant selama 6 tahun di beberapa perusahaan perkebunan kelapa sawit swasta di Indonesia. Pelatihan yang pernah diikuti antara lain Pelatihan Lead Auditor RSPO PNC 2018 dengan Checkmark Training, Pelatihan Lead Auditor IRCA 9001:2015, Refreshment New ISPO (PERMENTAN 38 Tahun 2020), Awareness (ISO 9001, ISO 14001, ISO 45001:2018, ISO 19011 : 2018, ISO 17021:2015, ISO 17065:2012), In House Training (Best Management Practice, Lingkungan, Ketenagakerjaan, Sosial, dan Transparansi), Calon Ahli Keselamatan dan Kesehatan Kerja (AK3U) oleh Kementerian Tenaga Kerja RI, Auditor ISPO Sertifikasi oleh LPP dan Komisi ISPO, Traceability Supply Chain dan Smallholder Engagement dan sebagainya.
Afiffuddin	Aspek ICS, SCC, Legal, BMP	Warga Negara Indonesia, Diploma III jurusan Perkebunan Kelapa Sawit, Institut Pertanian Bogor. Pengalaman kerja selama lima tahun sejak tahun 2010 di Perusahaan Perkebunan Kelapa Sawit di Indonesia sebagai staf operasional agronomi

		dan mengikuti beberapa pelatihan yaitu: Basic Plantation Management Program, Lead Auditor ISPO tahun 2016, Kursus Lead Auditor P&C RSPO tahun 2018, Kursus Lead Auditor Sertifikasi Rantai Pasok RSPO tahun 2018 2021, Ahli Umum K3, Manajemen Sistem K3 berdasarkan PP 50 Tahun 2012 dan Pelatihan Sertifikasi Sistem Manajemen (ISO 9001-2015/SNI 19011-9001:2015) ISO 17021, ISO 17065, SA 8000.
--	--	---

Untuk membantu pelaksanaan proses penilaian di lokasi tersebut, PT. Mutuagung Lestari mengundang para pihak untuk memberikan komentar terhadap hal-hal yang menjadi poin penilaian seperti di bawah ini:

- Kelestarian lingkungan di sekitar kebun atau pabrik termasuk penggunaan pestisida dan penanggulangan limbah
- Keanekaragaman hayati di sekitar kebun dan pabrik serta lingkungan sekitarnya
- Peluang Kerja
- Kontribusi perusahaan terhadap pembangunan daerah
- Kondisi perumahan, sanitasi, fasilitas dan sarana pendukung pendidikan.
- Permasalahan lainnya yang berkaitan dengan sertifikasi.

Komentar akan diterima dalam waktu 30 hari setelah surat ini dikeluarkan untuk kami pertimbangkan dalam proses penilaian. Dan isilah formulir di bawah ini serta lampirkan pada lembaran komentar sebagai data pribadi anda, dan untuk kami melakukan klarifikasi terhadap saran atau komentar yang anda berikan.

Nama : _____
Alamat : _____
Nomor Telepon : _____
Nomor Fax : _____

Bila dalam memberikan komentar data pribadi anda tidak ingin dipublikasikan. Anda dapat menuliskan kata 'RAHASIA' dalam surat komentar anda. Silahkan kirimkan komentar anda kepada :

PT MUTUAGUNG LESTARI**Leonada****Operations Manager**

Jl. Raya Bogor Km. 33,5 No. 19
Cimanggis, Depok - Indonesia 16953
Telp. (+62-21) 8740202
Fax. (+62-21) 87740745/46
agri@mutucertification.com
web : www.mutucertification.com

GAPOKTAN TANI MANDIRI**Jusy Siboro****Ketua**

Laut Tador Village, Sei Suka Sub District, Batu Bara District,
Sumatera Utara Province, Indonesia
Telephone: (+62) 822 7634 6757
gapoktantanimandiri68@gmail.com

Kami ucapkan terima kasih atas segala komentar yang anda berikan.

Hormat kami,

**Irham Budiman**

Direktur PT Mutuagung Lestari