

Date: 14 September 2023

Notification of RSPO Initial Certification of Sungai Rasau POM PT Karya Bakti Agro Sejahtera subsidiary of Bumitama Agri Ltd (RSPO Membership 1-0043-07-000-0, 08 October 2007)

Dear Stakeholders,

Bumitama Agri Ltd has applied to Mutuagung Lestari and will conduct Initial Certification at PT Karya Bakti Agro Sejahtera with scope Sungai Rasau POM and its supply based, located at Kedondong Village, Kendawangan Sub District, Ketapang District, Kalimantan Barat Province, Indonesia against the requirement of Indonesia National Interpretation of the RSPO Principles and Criteria for the Production of Sustainable Palm Oil 2018 (INANI 2020).

Sungai Rasau POM – PT Karya Bakti Agro Sejahtera has successfully been registered in the PalmTrace IT platform with member RSPO_PO1000008180. The organization is a member of RSPO and has been taking an active role in the RSPO certification processes and planned to maintain RSPO Sustainable Palm Oil requirement for all of its production. Mutuagung Lestari has arranged to conduct the assessment to the organization which operating 1 (one) palm oil mill and 3 (three) estates on **23 to 28 October 2023**.

Information on production data of Mill and estates to be assessed are as follows:

Name of Mill	Location	GPS Reference		Mill Capacity (Tonnes/hour)	Annual Volume	
		Latitude	Longitude		CPO Output (Tonnes/year)	PK Output (Tonnes/year)
Sungai Rasau POM	Kedondong Village, Kendawangan Sub District, Ketapang District, Kalimantan Barat Province, Indonesia	S 110° 30' 7.59"	E 2° 16' 44.06"	60	22,649	3,902

*Sources: Data Production period of 12 months

Name of Estate	Location	GPS Reference		Total Area (Ha)	Production Area (Ha)	FFB Production (tonnes/year)
		Latitude	Longitude			
Marau Raya Estate	Rangkong Village, Marau Sub District, Ketapang District, Kalimantan Barat Province, Indonesia	S 110° 33' 26.91"	E 2° 12' 10.49"	2,160.33	2,160.33	41,303
Sungai Rasau Estate	Kedondong Village, Kendawangan Sub District, Ketapang District, Kalimantan Barat Province, Indonesia	S 110° 29' 13.95"	E 2° 16' 1.32"	1,942.60	1,942.60	46,256
Temiyang Raya Estate	Bangkal Serai Village, Marau Sub District, Ketapang District, Kalimantan Barat Province, Indonesia	S 110° 31' 6.42"	E 2° 17' 48.63"	272.82	272.82	6,459
Total				4,375.75	4,375.75	94,018

*Sources: Data Production period of 12 months

Founded in 1996 and listed on the Singapore Exchange in 2012, Bumitama Agri Ltd. and its Group have grown to be one of the leading Fresh Fruit Bunches (FFB) growers and producers of Crude Palm Oil (CPO) and Palm Kernel (PK) in Indonesia. Our motto 'Excellence through discipline' guides us throughout our work, while dedicated to our vision, mission, and cultural values. We seek continuous improvement through introducing innovative technologies, such as drones or mobile phone applications into

our operations, and by constantly reviewing and benchmarking our performance against the one of the industry leaders. We are always mindful of the wellbeing of the key elements surrounding our operations, whether that be our employees, the local communities, or the unique Indonesian biodiversity and natural resources.

The Group has consistently stayed on the path towards achieving higher yields and extraction rates by investing in research and development, technology, and best practices in cultivation of oil palm. These efforts have made us one of the most efficient producers in the industry today, boasting a CPO yield of 4.2 tonnes per ha in 2021.

Our Vision and Mission

Vision

To be a leading CPO producer through continuous improvement, focus on productivity, cost efficiency, sustainability, and growth.

Mission

To enhance shareholders' value.

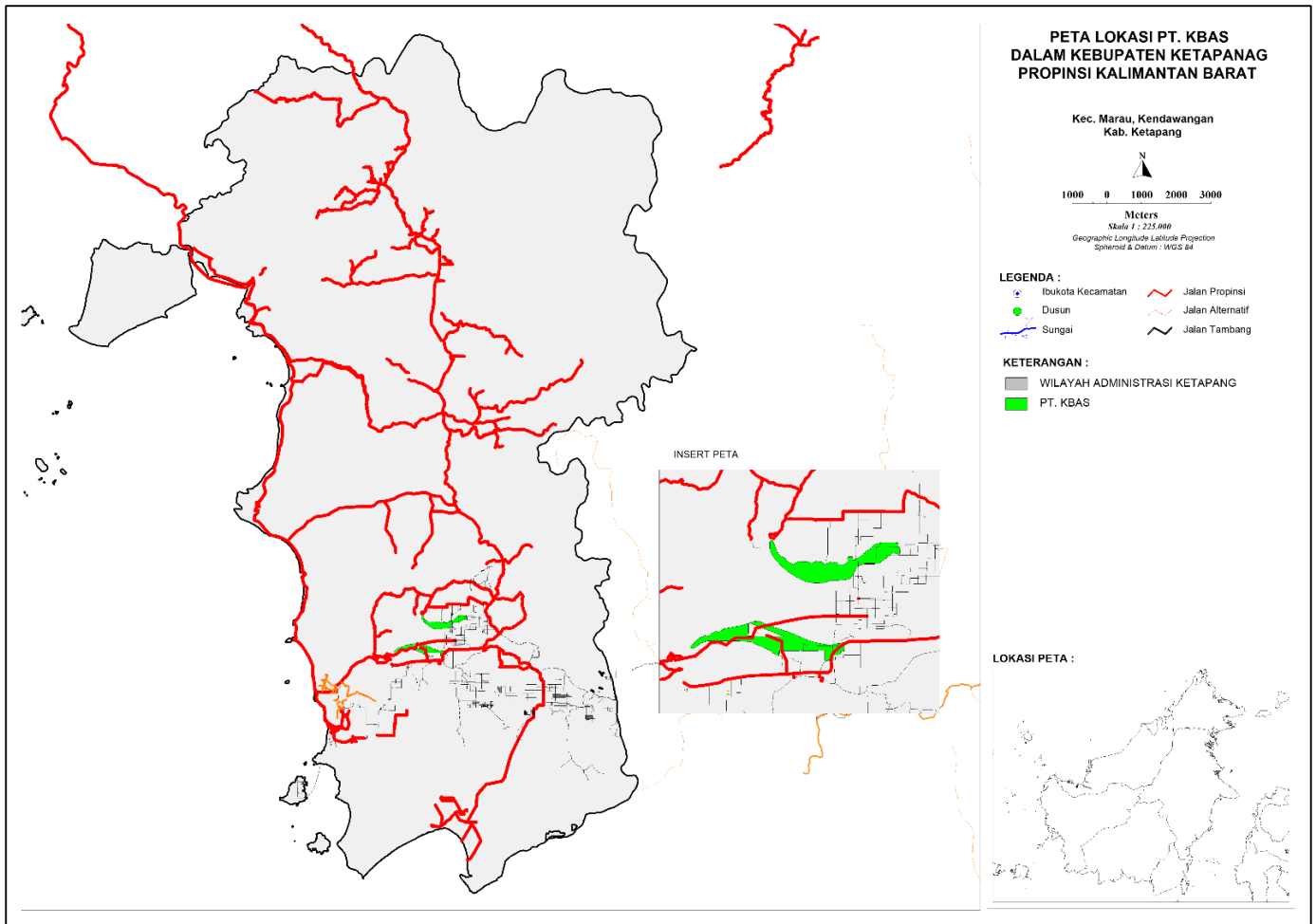
To improve the benefits and quality of life of our employees.

To improve the welfare of the local communities and the environment.

PT KBAS has implemented the NPP and RaCP processes. The NPP process was completed on November 4, 2016. (<https://rspo.org/certification/new-planting-procedure/public-consultations/bumitama-agri-ltd-pt-karya-bakti-agro-sejahtera-3>).

PT KBAS is included in the Bumitama group's RaCP submission. On January 9, 2023, the RSPO via email informed them that Bumitama's Submission Annex 8 had received a satisfactory assessment so that the RaCP for the Bumitama process was considered complete and the certification process was permitted.

Location maps of the unit certification are:



PT Mutuagung Lestari, is also known Mutu Certification International (MUTU), and has started as inspection, laboratory, and Certification body since 1990. As a private national company and supported with highly committed professionals, MUTU has gained recognition nationally and internationally. Since June 2003, MUTU has received recognition from the Ministry of Agriculture, Forestry, and Fishery of Japan (MAFF) as registered overseas certification body (ROCB). MUTU certify and mark products with Japan agriculture standard (JAS) covering Indonesia, Myanmar, Cambodia, Malaysia, Vietnam, Timor Leste, Philippines, Papua New Guinea and China. MUTU is the first ROCB in Asia. National Accreditation Committee has accredited MUTU as Quality Management System certification body (ISO 9001:2015) and Environmental Management System certification body (ISO 14001:2015). Indonesia Ecolabelling Institute (LEI) has also accredited MUTU as Sustainable Forest Management System certification body, Certification Body of Indonesian Sustainable Palm Oil (ISPO), Since March 2014, MUTU has been accredited by ASI (Accreditation Services International) as a RSPO certification body.

The auditor team for the certification assessment will be led of **Moh. Arif Yusni** and other team auditor from PT Mutuagung Lestari, consist of:

Audit Team	Role/ Area of Requirement	Qualification and Experience
Moh Arif Yusni	Legal, Social, TBP and Partial Certification	Indonesian citizen. Bachelor of Agriculture, majoring in Plant Protection. He has working experience at Oil Palm Plantation Company in Indonesia. Has attended several trainings, i.e.: ISO 19011, ISO 9001; ISO 14001, SA 8000, RSPO lead auditor, ISPO lead auditor, OHS expert, OHS auditor based on National Government No. 50/2012, SCCS, etc. Has conducting ISPO, RSPO and MSPO audit since 2012 with expertise on best management practices for estate and mill, legality, worker welfare, safety, social, environment, conservation, transparency, long term economic management plan and supply chain for palm oil mill aspects.
Galih Rezza Rindu Rachmansyah	Worker Welfare, SCCS, and Social Aspect	Indonesian citizen, Bachelor of Agriculture with major in Plant Pest and Disease. Has one year experience as Field Expert in Pesticide Company and 3 years' experience in Industrial Forest Management, Forest Rehabilitation and Reclamation on Indonesia Stated Owned Company as Assistant. Training which had attended including Lead Auditor ISO 9001, ISO 14001, ISO 17021, ISO 19011, SA 8000, Lead Auditor ISPO, Lead Auditor RSPO, RaCP & NPP Awareness and OHSAS 18001:2007. Has involved in several audit activities related to sustainable palm oil since 2017 in the aspects of Best Management Practices (BMP), social, worker welfare and OHS.
Benli Manurung	Best Management Practice and OHS	Bachelor of Agriculture Majoring in Soil Science. He has more than 4 years of experience as a plantation operations staff in a private oil palm plantation company in Indonesia. The trainings he has attended include: ISPO, RSPO, Lead auditor of ISO 9001: 2015; ISO 14001; 2015, IHT Health & Safety Aspect and Best Management Practice. Has participated in several audit activities since 2016 in the field of Best Management Practice, Health & Safety Aspect and Worker Welfare.

PT Mutuagung Lestari invites stakeholders to provide comments (if any) on any of the following matters related to the site for assessment:

- a. Environmental protection within the estate or mill including use of pesticide and waste management.
- b. Biodiversity within the estate and mill
- c. Contribution for local development and opportunities for employment
- d. Provision of housing, sanitation, facility and education support
- e. Other issues related with the assessment

Comments accepted within 30 days from the date of this latter will be considered in the certification assessment. Please include the following details in case we may need to contact for your clarification on any issued raised.

Name : _____
Address : _____
Telephone : _____
Fax : _____

If you wish your comments to be treated confidentiality or remain anonymous, please mark your reply 'CONFIDENTIAL'. Please send your comments to:

PT MUTUAGUNG LESTARI

Leonada

Operations Manager

Jl. Raya Bogor Km. 33,5 No. 19

Cimanggis, Depok – Indonesia 16953

Telp. (+62-21) 8740202

Fax. (+62-21) 87740745/46

agri@mutucertification.com

web : www.mutucertification.com

PT Karya Bakti Agro Sejahtera

Jonnes Daulay

Certification & Safety Compliance Dept. Head

Jl. Melawai Raya No.10, RW.1 Melawai

Kec. Kby. Baru, Kota Jakarta Selatan

Daerah Khusus Ibukota Jakarta 12160

Telp. (021) 27838200

Fax. (021) 27838200

jonnes.daulay@bumitama.com

web : www.bumitama-agri.com/

Thank you for your comments and feedback.

Yours faithfully,



Irham Budiman
international

Irham Budiman

Director

PT Mutuagung Lestari