



Roundtable on Sustainable Palm Oil

RSPO NOTIFICATION OF PROPOSED NEW PLANTING

This notification shall be on the RSPO website for 30 days as required by the RSPO procedures for new plantings (<http://www.rspo.org/?q=page/535>). It has also been posted on local on-site notice boards.

Date of notification: 17 September 2014

Tick whichever is appropriate

<input checked="" type="checkbox"/>	This is a completely new development and stakeholders may submit comments.
<input type="checkbox"/>	This is part of an ongoing planting and is meant for notification only.

COMPANY : **BUMITAMA AGRI Ltd**
SUBSIDIARY (If any) : **PT PT LADANG SAWIT MAS**
RSPO Membership Number : 1-0043-07-000-00

Location of proposed new planting :

- Company name : PT Ladang Sawit Mas
- Location : Sungai Kelik and Sembelangaan Villages,
Nanga Tayap Sub-district, District of Ketapang
Province of West Kalimantan, Indonesia.
- Geographical location : 0⁰ 40' 23" - 0⁰ 50' 16" North and 110⁰ 9' 0.1" - 110⁰ 25' 31" East
- Surrounding Entities :
 - a. North. PT Sawit Mitra Abadi Oil Palm Plantation concessions.
 - b. South. PT Agro Lestari Mandiri Oil Palm Plantation concessions.
 - c. West. Gunung Tarak Protected Forest area and Production Forest.
 - d. East. Tanah Merah Hamlet, Nanga tayap Sub-district.
- New Planting Area : 8,300 Ha
- Permits :
 - a. Deed of Company on behalf PT Ladang Sawit Mas from Republic of Indonesia Ministry of Law and Human Rights Number C-24200 HT.01.01.TH.2005 dated 1 September 2005.
 - b. Taxable letter Inauguration from Republic of Indonesia Ministry of Finance with tax number 02.389.119.5-061.000 on behalf PT Ladang Sawit Mas, Jl.Karya Baru , Komp.Pondok Pelangi B.2/8, Parit Tkaya – South Pontianak, West Kalimantan, Indonesia.

c. Location Permit:

- Based on Ketapang Regency Decree No. 172 year 2006 dated 14 June 2006 on Location Permit for Oil Palm Plantation Development Purposes at Sungai Kelik and Sembelangaan Villages, Nanga Tayap Sub-district, Ketapang District, West Kalimantan Province, Indonesia to PT Ladang Sawit Mas for the area of $\pm 9,100$ ha. Location permit is valid for 3 years.
- Ketapang Regency Decree No. 442 Year 2008 dated 11 November 2008 on revision of previous Location Permit No.172 Year 2006 regarding Oil Palm Plantation Cultivation and Palm Oil Processing Plant Purposes at Sungai Kelik and Sembelangaan Villages, Nanga Tayap Sub-district, Ketapang District, West Kalimantan Province, Indonesia to PT Ladang Sawit Mas for the area of $\pm 8,300$ ha and inform the area on Other Use Area (Area Penggunaan Lain/APL). Location permit is valid for 3 years.
- Ketapang Regency Decree No. 415 Year 2009 dated 9 November 2009 regarding the Extension for Location Permit of Oil Palm Plantation Cultivation and Palm Oil Processing Plant Purposes PT Ladang Sawit Mas for the area of $\pm 8,300$ ha.

d. Plantation Business Permit (Izin Usaha Perkebunan/IUP).

- Ketapang Regency Decree No.420 Year 2010 dated 28 July 2010 on Approval of Oil Palm Plantation Business (IUP) Permit to PT.Ladang Sawit Mas for 6,450 ha of oil palm plantation and 35 Ton FFB/hours palm oil mill, located in Nanga Tayap Sub-district, Ketapang District.

e. Social Environment Impact Assessment/ Analisa Dampak Mengenai Lingkungan (SEIA/AMDAL).

- Environmental Feasibility Permit of Plantation Activities (Area and $\pm 8,300$ Ha) and the Palm Oil Processing Plant (Plant Capacity 35 Ton FFB/hour) of PT.Ladang Sawit Mas in Nanga Tayap Sub-district, Ketapang District, West Kalimantan Province approved by West Kalimantan Governor Decree Number.49/BLHD/2010 dated 27 January 2010.

Figure 1. Location Map of PT. Ladang Sawit Mas



Figure 1.1. Location Map of PT. Ladang Sawit Mas

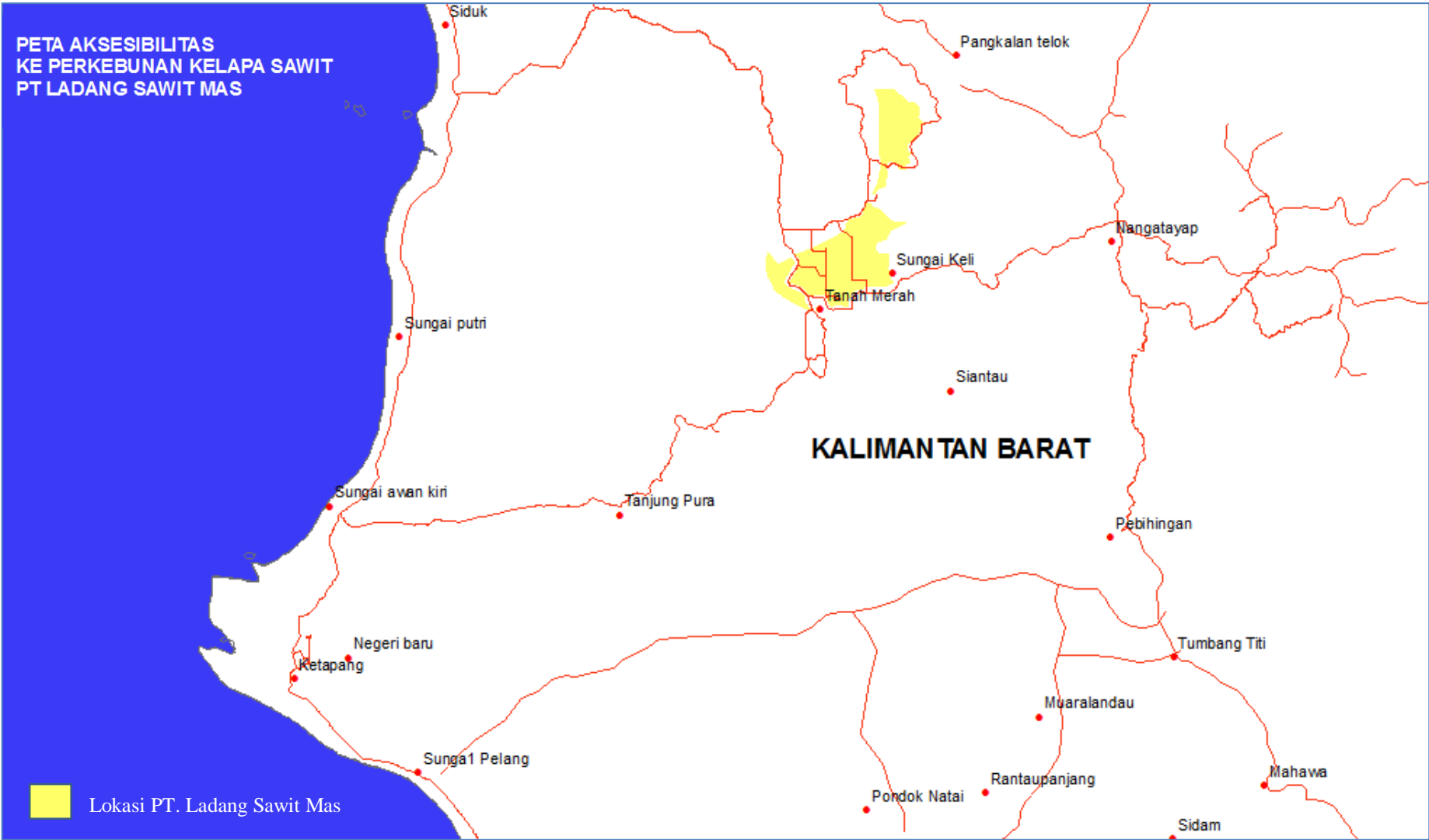


Figure 2. Map of Forest Area Status and Location Permit Area Map of PT. Ladang Sawit Mas

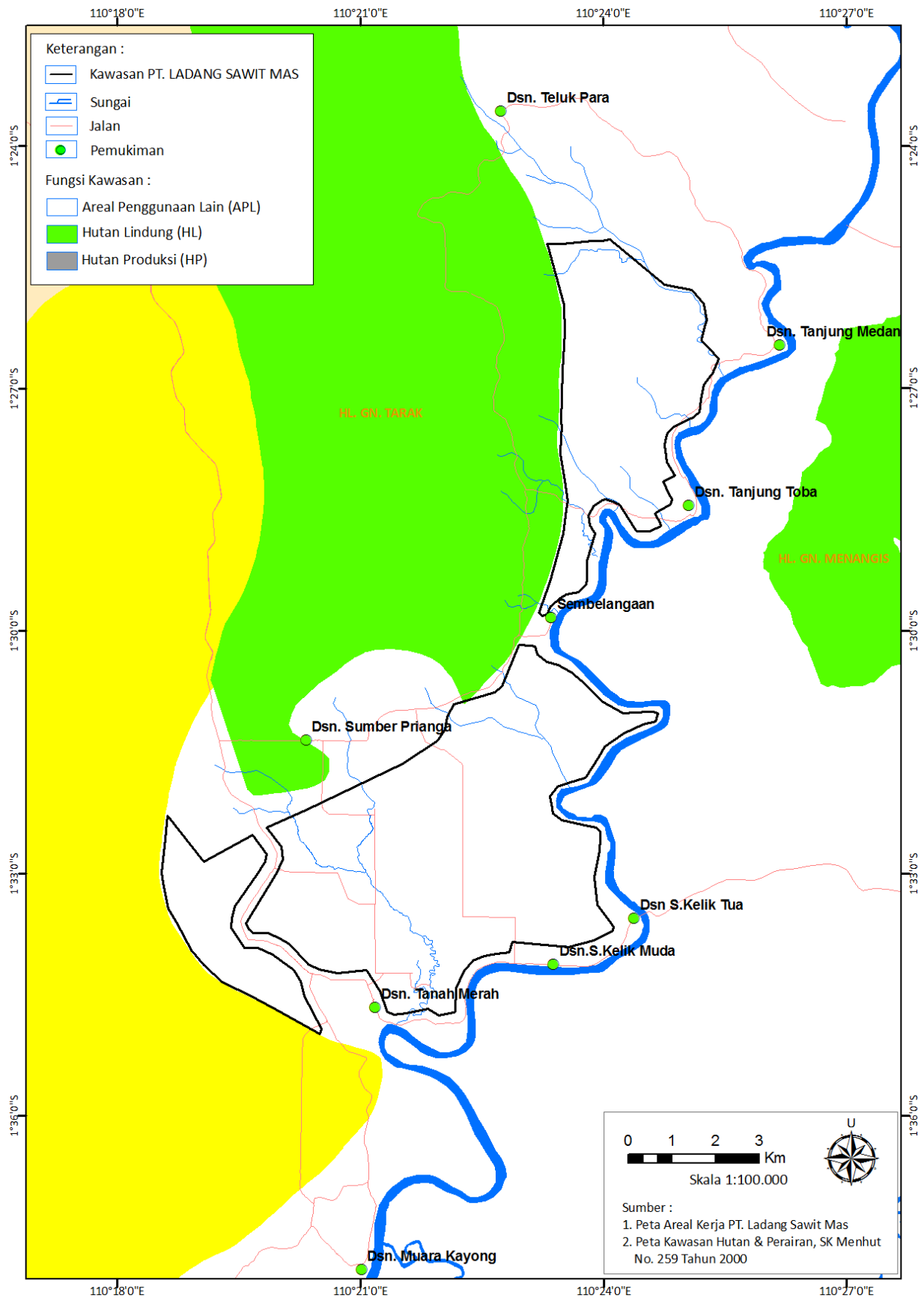


Figure 3. Planted Area Map of PT. Ladang Sawit Mas

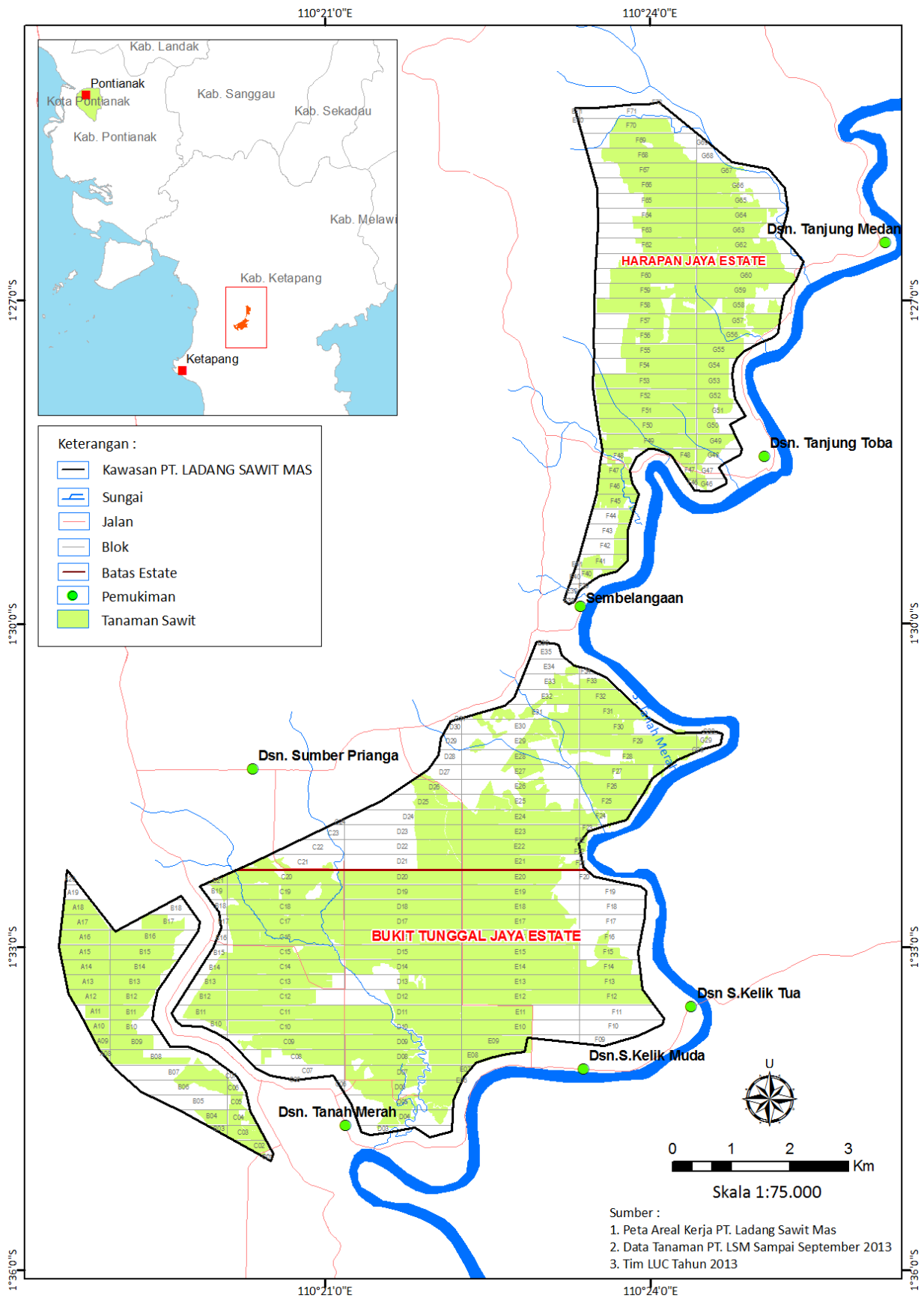
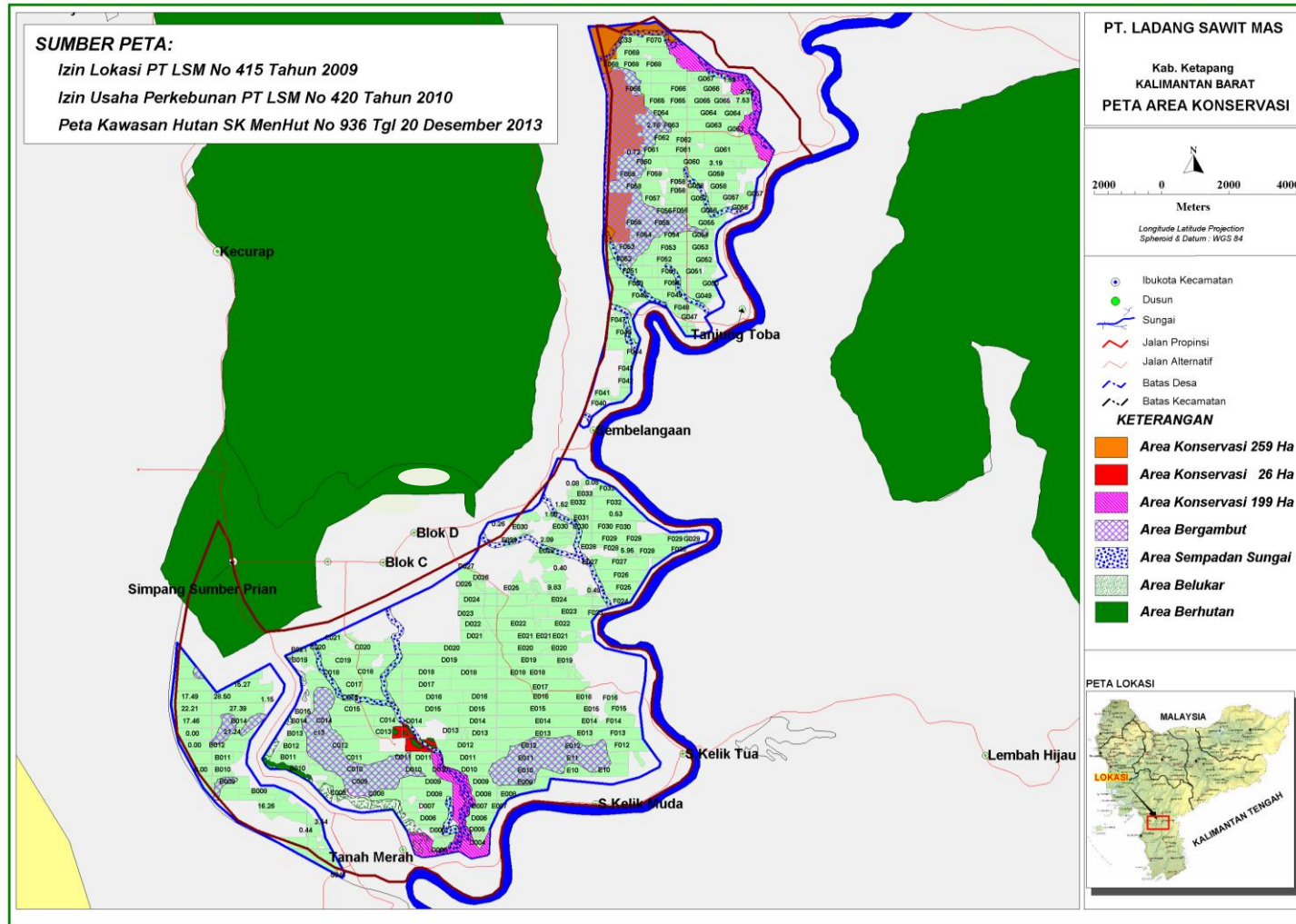


Figure 4. HCV Area Map of PT. Ladang Sawit Mas



Note: Blok C & Blok D - Transmigration area.

Area and time-plan for new plantings

LSM conducted HCV Assessment on April – May 2013. LSM subsequently conducted land clearance based on the draft indicative HCV map that have been prepared by SAN. The area of land has been cleared up to the HCV boundary. The LSM Final Report (August 2012 – September 2013) is 4,599.13 Ha, inclusive of plasma.

The proposed new planting area by PT LSM is in the location of the Plantation Business Permit (Izin Usaha Perkebunan) which the owners of the land have received the FPIC (free, prior and informed consent).

Table 1 The summary of area statements and time-plan for new planting Ladang Sawit Mas

Potential Land (ha)	Year Planting (ha)					
	2012		2013	2014	2015	total
	Before Takeover	After Takeover				
5,261	568.34	1,540.66	2,566	73.70	240	4,988.7

Land Use Change Analysis

LSM had conducted a Land Use Change analysis related to land cleared prior to completion of the HCV assessment. The analysis was presented to the BHCV Working Group meeting in Jakarta on 15 April 2014. A Compensation Panel has been assigned to LSM. As shared in the BHCV Working Group meeting, all matters related to remedial and compensation will be overseen by this Compensation Panel. LSM is currently preparing a compensation proposal and a remediation management plan which will be submitted to the Compensation Panel for review.

SUMMARY FROM SEI ASSESSMENTS:

A Participative PT Ladang Sawit Mas Social Environmental Impact Assessment (SEIA) has been conducted separately. The Social Impact Assessment (SIA) conducted by RSPO approved HCV assessors Kresno Dwi Sentosa as Team Leader on 27 April until 3 May 2013 and the Social Environmental Impact Assessment (AMDAL) conducted by government accredited assessors Aji Ali Akbar, S.Hut, M.Si; Kiki Priyo Utomo, ST, M.Sc; Naveri S.Hut; Herlan, S.Sos, M.Si; dr. M. Ibnu Kahtan; Arifin ST, M.Eng.Sc.

The SEIA field work which included in-depth interviews, as well as Focus Groups Discussions (FGD) and direct observations. Main issue studied in the assessment is company profile and general condition of the plantation area covering community perception, environmental, workers regulations (safety and health, labor union, workers facilities, work relationship, Impact to human capital (Job opportunities,

Improvement on the level of community education, Increased public awareness of good agricultural practice and Development of alternative income generating activities to safeguard their economic standing after post-development of the project), Impact to natural capital (Companies' participation in managing water quality, Land acquisition should also receive community approval, Social Impact Management to social sustainability on internal estate communities) and the provision of facilities for workers. The assessment is also conducted to identify the demand of transparency aspect (principal 1) and legal compliance as well as applicable law (principal 2) stated in P&C RSPO Indonesia, community perception upon plantation, as well as the existence of conservation area based on HCV toolkit Indonesia.

The SEIA covered a review of documentary sources are collected through Focus Group Discussion (FGD), in-depth interview, government policy, and village profile data; besides, the assessment also covered field observation and public consultation meetings for the villages within the project area and for affected landowners of surrounding communities. Summaries and findings of the interviews and public consultation meetings are included in the SEIA report.

SUMMARY FROM HCV ASSESSMENT(S):

HCV assessment of PT Ladang Sawit Mas operational area was conducted by:

No	Expert	Expertise	RSPO Accreditation
1.	Ir. Kresno Dwi Santosa, M.Si	Team Leader: Specialist: Social Economic Culture Master from IPB on natural resources management. 2008 – now work with Tropenbos International Indonesia Program as Forest Management Specialist and HCVF Coordinator.	Registered
2.	Dr. Ir. Rachmad Hermawan, M.Sc.F	Specialist: Environmental Services. PhD from IPB for Forestry Management . Lecturer in Forestry Management IPB HCV assessment consultant since 2006	Registered
3.	Ir. Sad Hasto Agus Suprpto	Specialist: Flora Fauna Forestry degree from IPB Previously worked with Biodiversity Conservation Indonesia (BCI), BP as environmental compliance officer, ERM Indonesia as environmental specialist, HCV & SEIA assessment consultant for various companies	Registered
4.	Kasuma Wijaya, S.Hut, M.Si	Specialist: GIS Master from IPB on forestry management. HCV & SEIA assessment consultant for various companies	-
5.	Ainur rahman	Asisstant for Fauna Ecology Diploma from IPB on conservation on forestry resources. Assistant for various environmental consulting works	-
6.	Berry Lira Rafiu, S.Hut	Assistant for Environmental Services Forestry degree from IPB HCV & SEIA assessment consultant.	-
7.	Syafruddin, SP, M.Si	Specialist: Social Economic, Culture Master from IPB on communication development, Faculty of Human Ecology. HCV & SEIA assessment consultant for various companies	-

No	Expert	Expertise	RSPO Accreditation
8.	Ahdi Muhtadin. S.hut	Assistant for GIS and mapping Forestry degree from Universitas Winaya Mukti, Bandung. Active in Tree Climbers Indonesia HCV & SEIA assessment consultant for various companies	-

The assessment included satellite imaginary analysis, collecting secondary data, extensive field surveys (mapping and landscaping, fauna aspect assessment, flora aspect assessment, culture economic social aspects assessment) and public consultations with the communities living in the project area for example on Ketapang District, Nanga Tayap Sub-district and M. Pawan Sub-district. The HCV assessment report included recommendations for the management and improvement of the HCV found within the project area.

The HCV identified in the PT.Ladang Sawit Mas operational area clearly mapped. Based on identification and analysis of HCV presence there are found HCV 1.2, HCV 1.3, HCV 1.4, HCV 2.3, HCV 4.1, HCV 5 and HCV 6 with total area coverage of 1,188.70 ha (18.42 % from the total Location Permit area of 8.300 Ha). No area supporting HCV 3 is identified. Location Plan and the area will be opening new land was not in the area of primary forest, however on the Other Use Area (APL/Areal Penggunaan Lain).

Table 3. Identification and Analysis of HCVs Presence (HCV1-6) in The Area of PT. Ladang Sawit Mas

No	HCV	Type of HCV	Area (Ha)
1	Riparian of Danau Pasir River	1.2, 1.3, 1.4, 4.1, 5	14.97
2	Riparian of Teluk Batu Tampin river	1.2, 1.3, 1.4, 4.1, 5	21.31
3	Riparian of Keseluruhan river	1.2, 1.3, 1.4, 4.1, 5	15.02
4	Riparian of Pembunuh Buaya river	1.2, 1.3, 1.4, 4.1, 5	18.87
5	Riparian of Dukuh river	1.2, 1.3, 1.4, 4.1, 5	25.95
6	Riparian of Putih river	1.2, 1.3, 1.4, 4.1, 5	26.03
7	Riparian of Peninjau river	1.2, 1.3, 1.4, 4.1, 5	19.30
8	Riparian of Sembelangaan river	1.2, 1.3, 1.4, 4.1, 5	2.29
9	Riparian of Penjalaan river	1.2, 1.3, 1.4, 4.1, 5	12.09
10	Riparian of Kakahan river	1.2, 1.3, 1.4, 4.1, 5	25.25
11	Riparian of Benipis river	1.2, 1.3, 1.4, 4.1, 5	53.07
12	Riparian of Tanah Merah river	1.2, 1.3, 1.4, 4.1, 5	55.05

No	HCV	Type of HCV	Area (Ha)
13	Riparian of Tanah Merah river	1.2, 1.3, 1.4, 4.1, 5	15.49
14	Bushes	1.2, 1.3, 1.4, 2.3	68.20
15	Secondary Forest area	1.2, 1.3, 1.4, 2.3	17.07
16	Peat area.1	4.1	396.60
17	Peat area.2	4.1	402.14
18	Grave at Bantaran Jaya Estate & Hamparan Jaya Estate		0.02
	Total HCV Area		1,188.73

DOCUMENTATION OF FREE, PRIOR AND INFORMED CONSENT.

In accordance with RSPO requirements PT Ladang Sawit Mas obtained free, prior and informed consent from the local community that would be affected by the development of the concession area or land that would be opened. Available evidence of the land acquisitions process on the operational area of PT Ladang Sawit Mas with an area of 3,991.11 ha since 18 January 2012 until 22 December 2013 to 409 villagers. All documentation of all land acquisitions was available in *Rekapitulasi Bukti Gantirugi Dan Tanam Tumbuh*.

SUMMARY OF PLANS:

The management plan of PT Ladang Sawit Mas has incorporated the findings from SEIA (AMDAL), Social Impact Assessment (SIA) and HCV assessment for implementing the operational plans. Recommendations and also conclusion as result of SEIA and HCV has integrated in the management plan and consistent with RSPO P&C for New Plantings.

VERIFICATION STATEMENT:

PT Ladang Sawit Mas opted for a document verification and field observation to conduct the New Planting Procedure. Mutuagung Lestari auditors have conducted desk study and discussions with sustainability officers during the desk audit. Four Mutuagung Lestari auditors were conducted the audit at their office in Jakarta on 10 April 2014 to review and verify the relevant document and also interview with the management representatives. Field observation conducted on 14-16 April 2014 to project area. PT Ladang Sawit Mas has identified and estimates the carbon stocks with Biograce calculation and plan the implementation of RSPO best management practices for minimize the emission.

During the field observation to project area of PT.LSM there was identified HCV area opened and plant into oil palm, however PT.LSM have followed the remediation and compensation procedure and submitted to RSPO Compensation Panel. PT LSM has done correspondent with RSPO about the responsibility of compliance to Criterion 7.8 (High Carbon Stocks) of the P&C RSPO 2013. Based on the correspondent known that “At this moment, it is acceptable for NPP to be submitted to the RSPO secretariat without the C7.8”.

The SEIA (AMDAL) conducted by the government approved consultants as well as the HCV and SIA assessments conducted by RSPO accredited and approved assessors. PT Ladang Sawit Mas has adhered to RSPO New Planting Procedure and documented the assessments and plans are comprehensive and professionally carried out according to RSPO requirements and comply with the applicable RSPO Principles, Criteria and indicators for new plantings.

Signed for, on behalf of,
Mutuagung Lestari

A circular logo for Mutuagung Lestari is partially obscured by a handwritten signature in black ink. The logo contains the text 'certification International', 'mutu', and 'PT. MUTUAGUNG LESTARI'.

Octo HP Nainggolan
Lead Auditor
17 September 2014

PT Ladang Sawit Mas

A handwritten signature in blue ink.

Francisca Tiurma Damanik
Certification & Compliance Dept.
17 September 2014