



**TÜVRheinland**®  
Precisely Right.

## **Roundtable on Sustainable Palm Oil**

Public Summary Report

Report No.: CA\_82450217065

Certification assessment against the RSPO Management System Requirement and Guidance for Group Certification of FFB Production, March 2016

**KUD Karya Mulya**

**Bumi Makmur Village, Nibung Sub District, Musi Rawas Utara District, South Sumatera  
Province,  
Indonesia**

Date of assessment : 29 May - 02 June 2017

Report prepared by:

**Panggading Hariara Nainggolan  
(RSPO Lead Auditor)**

Certification decision by:

**Abdul Qohar  
(Director of TUV Rheinland Indonesia)**

**Certification Body:**

PT TUV Rheinland Indonesia  
Menara Karya, 10<sup>th</sup> Floor  
Jl. H.R. Rasuna Said Block X-5 Kav.1-2  
Jakarta 12950, Indonesia  
Tel: +62 21 57944579  
Fax: +62 21 57944575  
[www.tuv.com/id](http://www.tuv.com/id)

## TABLE OF CONTENTS

<b>1.0 SCOPE OF CERTIFICATION ASSESSMENT .....</b>	<b>3</b>
1.1 National Interpretation Used .....	3
1.2 Type of Assessment.....	3
1.3 Location and Maps .....	3
1.4 Description of Supply Base .....	6
1.5 Dates of Plantings and Replanting Cycles.....	7
1.6 Area of Plantation (Total, Planted and Mature) .....	7
1.7 Organisational Information / Contact Person .....	9
1.8 Time Bound Plan for Other Management Units.....	9
1.9 Compliance to Rules for Partial Certification .....	9
1.10 Compliance to other RSPO Procedure.....	10
1.11 Compliance to RSPO Guidance on GHG calculation.....	10
1.12 Approximate Tonnages Certified .....	10
1.13 Recommendation for Certification .....	10
1.14 Date of Certificate Issued and Scope of Certificate.....	10
1.15 Other Achievements and Certifications Held .....	10
<b>2.0 ASSESSMENT PROCESS.....</b>	<b>12</b>
2.1 Certification Body .....	12
2.2 Qualifications of Lead Assessor and Assessment Team .....	12
2.3 Assessment Methodology .....	13
2.4 Stakeholder Consultation and Stakeholders Contacted.....	14
2.5 Date of Next Surveillance Visit.....	15
<b>3.0 ASSESSMENT FINDINGS .....</b>	<b>16</b>
3.1 Summary of Findings .....	16
3.2 Identified Non-conformances, Corrective Actions Taken and Auditors Conclusions.....	41
3.3 Noteworthy Positive Components and Potential for Improvement.....	51
3.4 Issues Raised by Stakeholders and Findings Pertaining to Issues.....	51
3.5 Acknowledgements of Internal Responsibility and Formal Sign-Off by Client.....	54
<b>APPENDICES .....</b>	<b>55</b>
Appendix 1: Details of Certificate .....	55
Appendix 2: Certification Audit Plan.....	57
Appendix 3: List of Abbreviations.....	69
Appendix 4: List of Stakeholders Interviewed and Contacted .....	69
Appendix 5: List of KUD Karya Mulya Members Included in RSPO Scope Audit.....	60

## 1.0 SCOPE OF CERTIFICATION ASSESSMENT

### 1.1 National Interpretation Used

The operations of the palm oil plantation assessed against RSPO Management System Requirement and Guidance for Group Certification of FFB Production, March 2016.

### 1.2 Type of Assessment

The main certification assessment carried out on independent smallholder group of KUD Karya Mulya in Bumi Makmur Village, Nibung Sub district, Musi Rawas District, South Sumatera Province, Indonesia.

### 1.3 Location and Maps

**Table 1: GPS locations for all smallholder groups included in certification assessment**

Name of Group Farmer	Location	GPS locations	
		Latitude (S)	Longitude (E)
Sentosa	Bumi Makmur	02°29'31.92"	103°00'15.67"
Bumi Asih A	Bumi Makmur	02°29'37.31"	103°00'34.17"
Sri Rejeki B	Bumi Makmur	02°29'11.14"	103°01'03.14"
Krida Utama A	Bumi Makmur	02°29'19.50"	103°00'36.67"
Tani Mulya A	Bumi Makmur	02°28'36.51"	103°00'20.52"
Tani Mulya B	Bumi Makmur	02°29'39.03"	103°00'52.84"
Gading Mulya A	Bumi Makmur	02°29'02.47"	103°00'31.75"
Gading Mulya B	Bumi Makmur	02°28'09.05"	103°59'72.47"
Gading Mulya C	Bumi Makmur	02°28'10.66"	103°59'50.86"
Gading Mulya D	Bumi Makmur	02°28'26.48"	103°00'16.77"
Sasana Sejahtera	Bumi Makmur	02°29'20.66"	103°00'07.67"
Kusuma Bhakti A	Bumi Makmur	02°28'20.54"	102°58'29.79"
Kusuma Bhakti B	Bumi Makmur	02°29'12.97"	102°59'52.63"
Ngudi Rahayu B	Bumi Makmur	02°27'35.23"	103°00'17.37"
Bina Tani Sejahtera	Bumi Makmur	02°27'20.34"	103°00'52.51"
Suka Maju A	Bumi Makmur	02°29'19.50"	103°00'36.67"
Usaha Baru	Bumi Makmur	02°28'41.71"	103°00'37.30"
Tunas Baru A	Bumi Makmur	02°29'02.23"	103°00'30.99"



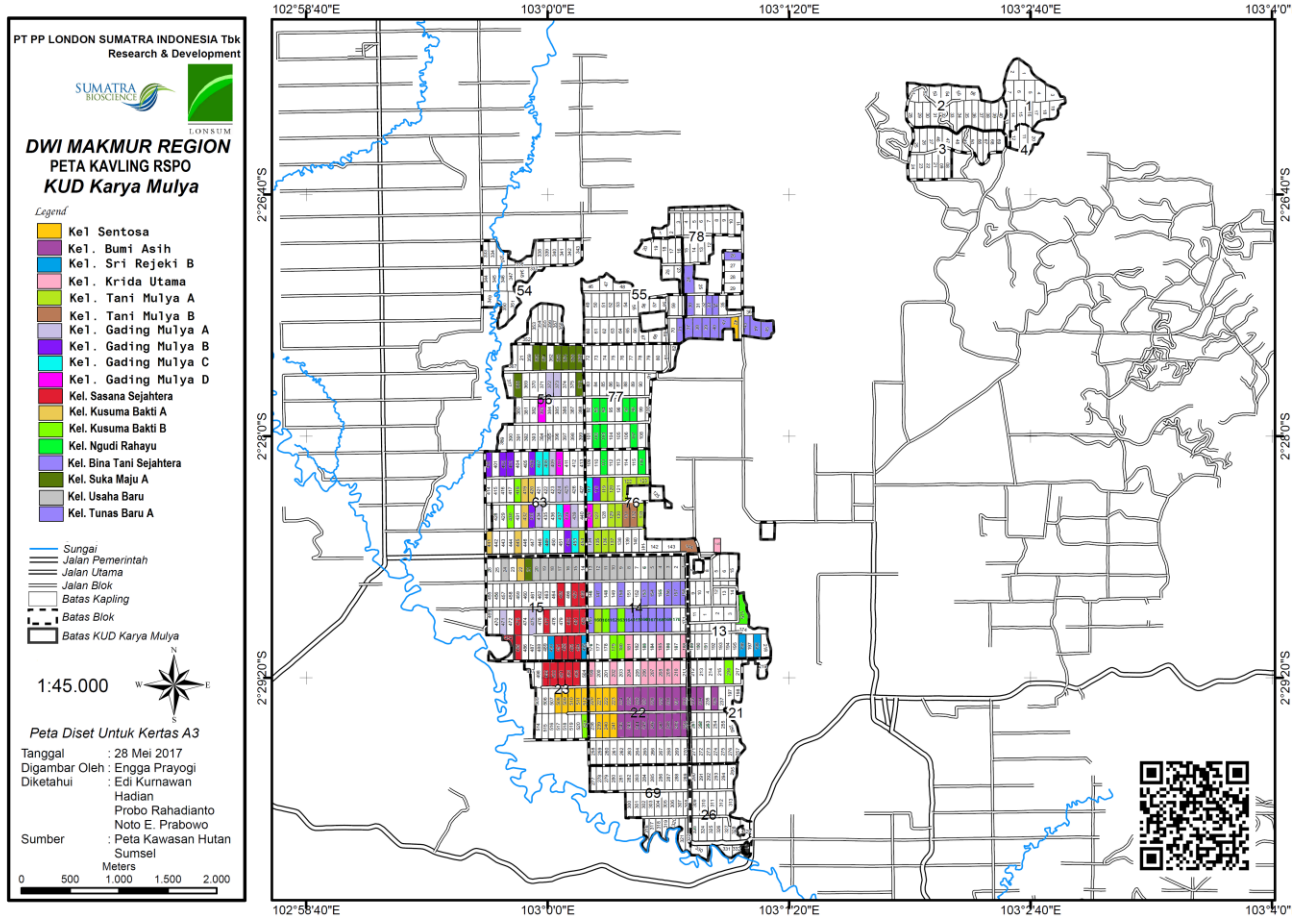
# RSPO Certification Assessment Report

## KUD Karya Mulya



Bumi Makmur , Nibung Sub district, Musi Rawas District, South Sumatera Province, Indonesia

Figure 2: Location of Independent Smallholder KUD Karya Mulya in South Sumatera, Indonesia



# RSPO Certification Assessment Report

## KUD Karya Mulya



Bumi Makmur , Nibung Sub district, Musi Rawas District, South Sumatera Province,  
Indonesia

Page 6 of 75

### 1.4 Description of Supply Base

**Table 2: Total and projected FFB production from Independent Smallholder of KUD Karya Mulya**

Group Member	FFB Production (mt) for January to December 2016	Projected output for next 12 months 2017 (mt)	CPO Equivalent (mt)*	PK Equivalent (mt)*	PKO Equivalent (mt)*	PKE Equivalent (mt)*
Sentosa	350.295	397.97	79.594	19.898	8.954	10.944
Bumi Asih A	760.975	794.971	158.992	39.748	17.887	21.861
Sri Rejeki B	185.267	182.623	36.524	9.131	4.109	5.022
Krida Utama A	369.138	506.114	101.324	25.307	11.388	13.919
Tani Mulya A	480.912	448.01	97.602	22.4	10.080	12.320
Tani Mulya B	198.806	145.131	29.026	7.256	3.265	3.991
Gading Mulya A	437.098	389.515	77.903	7.79	3.506	4.285
Gading Mulya B	242.106	296.936	53.987	14.846	6.681	8.165
Gading Mulya C	205.377	286.941	57.388	14.347	6.456	7.891
Gading Mulya D	212.955	218.851	43.77	10.942	4.924	6.018
Sasana Sejahtera	656.676	769.354	153.87	38.467	17.310	21.157
Kusuma Bhakti A	173.831	270.833	54.166	13.541	6.093	7.448
Kusuma Bhakti B	380.081	383.839	76.767	19.191	8.636	10.555
Ngudi Rahayu B	427.376	359.077	71.815	17.953	8.079	9.874
Bina Tani Sejahtera	334.917	453.612	90.722	22.68	10.206	12.474
Suka Maju A	189.161	217.798	43.559	10.889	4.900	5.989
Usaha Baru	661.749	930.134	186.026	46.506	20.928	25.578
Tunas Baru A	557.15	586.245	117.249	29.312	13.190	16.122
<b>Total FFB Production</b>	<b>6,823.870</b>	<b>7,637.954</b>	<b>1,530.284</b>	<b>370.204</b>	<b>166.592</b>	<b>203.612</b>

\*) Base on estimation OER 20%, KER 5% , PKO 45%, PKE 55% from FFB projection 2017

# RSPO Certification Assessment Report

## KUD Karya Mulya



Bumi Makmur , Nibung Sub district, Musi Rawas District, South Sumatera Province,  
Indonesia

Page 7 of 75

### 1.5 Dates of Plantings and Replanting Cycles

Independent Smallholders Group follows a replanting cycle of 25 years. Information on the dates of plantings is as per the table below.

**Table 3:** Age and year of plantings of independent smallholder estate

Oil palm planted area at each group member /Ha	Age & Year of Plantings					
	0-5 (2013-2017)	6-10 (2012-2008)	11-15 (2007-2003)	16-20 (2002-1998)	20-25 (1996)	< 1993
Sentosa	-	-	-	-	218.225	-
Bumi Asih A	-	-	-	-	422.580	-
Sri Rejeki B	-	-	-	-	80.445	-
Krida Utama A	-	-	-	-	240.600	-
Tani Mulya A	-	-	-	-	259.510	-
Tani Mulya B	-	-	-	-	78.840	-
Gading Mulya A	-	-	-	-	194.430	-
Gading Mulya B	-	-	-	-	132.390	-
Gading Mulya C	-	-	-	-	115.200	-
Gading Mulya D	-	-	-	-	78.230	-
Sasana Sejahtera	-	-	-	-	367.997	-
Kusuma Bhakti A	-	-	-	-	115.830	-
Kusuma Bhakti B	-	-	-	-	198.460	-
Ngudi Rahayu B	-	-	-	-	200.280	-
Bina Tani Sejahtera	-	-	-	-	283.970	-
Suka Maju A	-	-	-	-	175.900	-
Usaha Baru	-	-	-	-	357.110	-
Tunas Baru A	-	-	-	-	300.000	-
<b>Total</b>	-	-	-	-	<b>3,819.997</b>	-

**Table 4:** Planned and actual oil palm replanting activities for KUD Karya Mulya

Group Member	Year of Replanting plan					Actual
	2017	2018	2019	2020	2021	
Sentosa	-	-	-	-	-	-
Bumi Asih A	-	-	-	-	-	-
Sri Rejeki B	-	-	-	-	-	-
Krida Utama A	-	-	-	-	-	-
Tani Mulya A	-	-	-	-	-	-
Tani Mulya B	-	-	-	-	-	-
Gading Mulya A	-	-	-	-	-	-
Gading Mulya B	-	-	-	-	-	-
Gading Mulya C	-	-	-	-	-	-
Gading Mulya D	-	-	-	-	-	-
Sasana Sejahtera	-	-	-	-	-	-
Kusuma Bhakti A	-	-	-	-	-	-
Kusuma Bhakti B	-	-	-	-	-	-
Ngudi Rahayu B	-	-	-	-	-	-
Bina Tani Sejahtera	-	-	-	-	-	-
Suka Maju A	-	-	-	-	-	-
Usaha Baru	-	-	-	-	-	-
Tunas Baru A	-	-	-	-	-	-
<b>Total</b>	-	-	-	-	-	-

Note: Based on interviewed with Group Manager, replanting program still not available because the YoP of oil palm still productive.



# RSPO Certification Assessment Report

## KUD Karya Mulya



Bumi Makmur , Nibung Sub district, Musi Rawas District, South Sumatera Province,  
Indonesia

Page 8 of 75

### 1.6 Area of Plantation (Total, Planted and Mature)

**Table 5: Oil Palm Planted Area Summary, FFB Production and Average yield/ha for Independent Smallholder Group KUD Karya Mulya**

Estate Name	Total area (ha)	Oil Palm Planted area (ha)	Myature (Production) area (ha)	Imma- ture (ha)	FFB Production (tonnes)*	Average yield (ton/ha)*
Sentosa	21.8225	21.8225	21.8225	0.000	350.295	16.05
Bumi Asih A	42.2580	42.2580	42.2580	0.000	760.975	17.87
Sri Rejeki B	8.0445	8.0445	8.0445	0.000	185.267	23.03
Krida Utama A	24.0600	24.0600	24.0600	0.000	369.138	15.34
Tani Mulya A	25.9510	25.9510	25.9510	0.000	480.912	18.53
Tani Mulya B	7.8840	7.8840	7.8840	0.000	198.806	25.21
Gading Mulya A	19.4430	19.4430	19.4430	0.000	437.098	22.48
Gading Mulya B	13.2390	13.2390	13.2390	0.000	242.106	18.28
Gading Mulya C	11.5200	11.5200	11.5200	0.000	205.337	17.65
Gading Mulya D	7.8230	7.8230	7.8230	0.000	212.955	27.22
Sasana Sejahtera	36.7997	36.7997	36.7997	0.000	656.676	17.84
Kusuma Bhakti A	11.5830	11.5830	11.5830	0.000	173.831	15.00
Kusuma Bhakti B	19.8460	19.8460	19.8460	0.000	380.081	19.15
Ngudi Rahayu B	20.0280	20.0280	20.0280	0.000	427.376	21.33
Bina Tani Se- jahtera	28.3970	28.3970	28.3970	0.000	334.917	11.79
Suka Maju A	17.5900	17.5900	17.5900	0.000	189.161	10.75
Usaha Baru	35.7110	35.7110	35.7110	0.000	661.749	18.53
Tunas Baru A	30.0000	30.0000	30.0000	0.000	557.150	18.57
<b>Total</b>	<b>3,819.997</b>	<b>3,819.997</b>	<b>3,819.997</b>	<b>0.000</b>	<b>6,823.870</b>	<b>334.62</b>

\*) Year 2016

**Table 6: Land use data for Independent Smallholder Group KUD Karya Mulya**

Estate Name	Total area (ha)	Oil Palm Planted Area (ha)	HCV/ Potential HCV areas* (ha)	Land used for other purposes (ha)
				Road
Sentosa	218.225	218.225	0.00	0.00
Bumi Asih A	422.580	422.580	0.00	0.00
Sri Rejeki B	80.445	80.445	0.00	0.00
Krida Utama A	240.600	240.600	0.00	0.00
Tani Mulya A	259.510	259.510	0.00	0.00
Tani Mulya B	78.840	78.840	0.00	0.00
Gading Mulya A	194.430	194.430	0.00	0.00
Gading Mulya B	132.390	132.390	0.00	0.00
Gading Mulya C	115.200	115.200	0.00	0.00
Gading Mulya D	78.230	78.230	0.00	0.00
Sasana Sejahtera	367.997	367.997	0.00	0.00
Kusuma Bhakti A	115.830	115.830	0.00	0.00
Kusuma Bhakti B	198.460	198.460	0.00	0.00
Ngudi Rahayu B	200.280	200.280	0.00	0.00
Bina Tani Sejahtera	283.970	283.970	0.00	0.00
Suka Maju A	175.900	175.900	0.00	0.00
Usaha Baru	357.110	357.110	0.00	0.00
Tunas Baru A	300.000	300.000	0.00	0.00



# RSPO Certification Assessment Report

## KUD Karya Mulya



Bumi Makmur , Nibung Sub district, Musi Rawas District, South Sumatera Province,  
Indonesia

Page 9 of 75

Estate Name	Total area (ha)	Oil Palm Planted Area (ha)	HCV/ Potential HCV areas* (ha)	Land used for other purposes (ha)
				Road
<b>Total</b>	<b>3,819.997</b>	<b>3,819.997</b>	<b>0.00</b>	<b>0.00</b>

### 1.7 Organisational Information / Contact Person

Contacts details of the company are as follows:

<b>Company Name:</b>	KUD Karya Mulya
<b>RSPO Membership no.</b>	1-0229-17-000-00 (March 10, 2017)
<b>Address:</b>	Bumi Makmur Village, Nibung Sub District, Musi Rawas District, South Sumatera Province, Indonesia
<b>Contact Person:</b>	Yuli Sari Yeni
<b>Telephone:</b>	+628122783507
<b>Email:</b>	yuli.yeni@indofood.co.id

### 1.8 Time Bound Plan for Other Management Units

Independent smallholder does not has timebound plan because this is does not applicable for independent smallholder.

Tabel 7: Time Bound Plan of KUD Karya Mulya

Name of Holding	Location	Time bound plan for certification	Status
-	-	-	-

### 1.9 Compliance to Rules for Partial Certification

For partial certification, Independent smallholder does not applicable and the auditor does not conduct verification for this.

Partial Certification Requirements	Audit Findings
(a) The parent organization or one of its majority owned and / or managed subsidiaries is a member of RSPO.	NA
(b-d) A challenging time-bound plan for certifying all its relevant entities submitted to the Certification Body (CB) during the first certification audit. The time-bound plan should contain a list of subsidiaries, estates and mills. Any revision to the time-bound plan or to the circumstances of the company shall cause the plan to review. for whether it is still appropriate, such that changes to the time-bound plan are permitted only where the organisation can demonstrate that they are justified	NA
(e) No replacement of primary forest or any	NA

# RSPO Certification Assessment Report

## KUD Karya Mulya



Bumi Makmur , Nibung Sub district, Musi Rawas District, South Sumatera Province,  
Indonesia

Page 10 of 75

area identified as containing High Conservation Values (HCVs) or required to maintain or enhance HCVs in accordance with RSPO criterion 7.3. Any new plantings since January 1st 2010 must comply with the RSPO New Plantings Procedure	
(f) Land conflicts, if any, are being resolved through a mutually agreed process, e.g. RSPO Grievance procedure or Dispute Settlement Facility, in accordance with RSPO criteria 6.4, 7.5 and 7.6.	NA
(g) Labour disputes, if any, are being resolved through a mutually agreed process, in accordance with RSPO criterion 6.3.	NA
(h) Legal non-compliance, if any, are being resolved in accordance with the legal requirements, with reference to RSPO criteria 2.1 and 2.2.	NA

### 1.10 Compliance to other RSPO Procedure

RSPO NPP	NA
RSPO Compensation and Remediation procedure	NA
Areal Subject to sanction	NA

### 1.11 Compliance to RSPO Guidance on GHG calculation

The RSPO PalmGHG Calculator used	NA
Accurate data has been put into the RSPO PalmGHG Calculator	NA
Net GHG Emission Figure (tCO <sub>2</sub> e/tCPO)	NA

### 1.12 Approximate Tonnages Certified

The approximate tonnages certified, based on FFB production from the existing members own estates and projected additional FFB from year 2017 are as follows: Fresh Fruit Bunch (FFB) **7,637,954** tonnes

### 1.13 Recommendation for Certification

Independent Smallholder Group KUD Karya Mulya has established and maintains an effective system to ensure compliance with the RSPO Management System Requirement and Guidance for Group Certification of FFB Production, March 2016. The audit team has confirmed through the audit process that the company's practices complies with, adequately maintains and implements the requirements of RSPO Management System Requirement and Guidance for Group Certification of FFB Production, March 2016.

TUV Rheinland Indonesia recommends that Independent Smallholder Group KUD Karya Mulya approved as a producer of RSPO Certified Sustainable FFB.

### 1.14 Date of Certificate Issued and Scope of Certificate

The scope of the certificate covers production of FFB from Independent Smallholder Group KUD Karya Mulya as much as 18 group farmers.

The date of certificate issued is **21 November 2017** Further details of the certificate are as per Appendix 1.

# RSPO Certification Assessment Report

## KUD Karya Mulya

Bumi Makmur , Nibung Sub district, Musi Rawas District, South Sumatera Province,  
Indonesia



Page 11 of 75

### 1.15 Other Achievements and Certification Helds

Name of mill / estate	Certification Standard / Award achieved	Certification Body / Awarder	Date Achieved
-	-	-	-

# RSPO Certification Assessment Report

## KUD Karya Mulya



Bumi Makmur , Nibung Sub district, Musi Rawas District, South Sumatera Province,  
Indonesia

Page 12 of 75

## 2.0 ASSESSMENT PROCESS

### 2.1 Certification Body

PT TUV Rheinland Indonesia is member of Group TÜV Rheinland Group, a global leader in independent testing and assessment services. The TÜV Rheinland Group established in 1872 with offices located in over 490 locations in 62 countries on all five continents. TUV Rheinland Indonesia offers certification for a wide range of management systems according to established international standards including ISO 9001, ISO 14001, OHSAS 18001, SA 8000, as well as CDM Validations and Verifications. PT TUV Rheinland Indonesia office is located in Jakarta, Indonesia.

### 2.2 Qualifications of Lead Assessor and Assessment Team

Name	Position	Qualifications / Experience
Panggading Hariara Nainggolan	Lead Auditor	<p><b>Education:</b> Sarjana Bachelor of Social Science, Jakarta Institute of Social &amp; Politic Science</p> <p><b>Training Attendaed:</b> ISPO by ISPO Commision, RSPO Lead Auditor (Pro-Forest, Daemeter), Quality Management System (QMS) Auditor/Lead Auditor (ISO 9001: 2015) IRCA by Neville Clarke, RSPO in house training by MAL Awareness of QHSE (management system review &amp; integrated management system concept ISO 9001, 14001, OHSAS).</p> <p><b>Working experience:</b> National Commission for Child Protection (KOMNAS Perlindungan Anak) as Staff, Common Ground Indonesia as Staff Education Program Division - Reporter at Global Quality Information (Golbal TV), Producer at Netwave Multimedia, Producer at satu Visi Perkasa Production, Project Supervisor at PT. Surya Solusi Informasi and Auditor at PT TUV Rheinland Indonesia.</p>
Naik Monang Parlindungan Lingga	Auditor	<p><b>Education:</b> Bachelor of Forestry, Gadjah Mada University.</p> <p><b>Training attended :</b> ISPO Auditor, Quality Management System (QMS) Auditor/Lead Auditor (ISO 9001:2008) by IRCA, Environmental Management Systems Auditor/Lead Auditor Conversion Training by IRCA (ISO 14001-2004), Lead Auditor RSPO Training, HCVA Training and RSPO SCCS Training (2016)</p> <p><b>Working experience:</b> Field Assistant PT Sapta Karya Damai (2008-2013), Auditor in PT Sucofindo (2013-2015), and Auditor in PT TUV Rheinland Indonesia (2015-present).</p>
Ade Sudiana	Auditor	<p><b>Education:</b> Bachelor of Forestry, Faculty of Forestry, Bogor Agricultural University</p> <p><b>Trainings attended :</b> Lead Auditor course - Neville Clark; ISO 9001:2015 (2016), Awarness training of ISO 9001, 14001 and 18001, inhouse training of ISO 19011 and ISPO, Training of Assesor for Sustainabiity Natural Forest Management (SFM) by The Indonesian Ecolabelling Institute (2008), Training of Auditor for Sustainability Forest Management By Center for Educational and Training of Forestry, Department of Forestry (2010), Examination of competency for auditor of Sustainability Forest Management by Personal Certification Body-Rhino (2014), Training of Auditor For ISPO (2016) by ISPO Commision, Training of Lead Auditor for RSPO (2016) by Pro Forest and Daemeter, Training of Lead Auditor for SCCS (2017) by David Ogg.</p>

# RSPO Certification Assessment Report

## KUD Karya Mulya



Bumi Makmur , Nibung Sub district, Musi Rawas District, South Sumatera Province, Indonesia

		<p><b>Working experience:</b>                  Consultant and Trainer of : Quality Management System (ISO 9001), Environment Management System (ISO 14001), Safety Management System (SMK3/ OHSAS 18001), ISPO (Indonesian Sustainable Palm Oil), Consultant and trainer in PT FOCUS (2008-2016) ; Auditor of SFM in PT Forestcitra Sejahtera (2008-2016); Auditor of SFM, RSPO and ISPO in PT TUV Rheinland Indonesia (2016-now)</p>
<p>Andreas Budi Rahutomo</p>	<p>Auditor</p>	<p><b>Education:</b> Forestry Undergraduate – Universitas Gadjah Mada.</p> <p><b>Relevant trainings:</b> RSPO LA Training, Upgrading ISO 9001:2015; Lead Auditor IRCA Approved ISO 9001, ISPO Lead Auditor Training, IFCC Auditor Training, RSPO Supply Chain Auditor Training, FSC FM/CoC Auditor Training.</p> <p><b>Professional experience:</b> 5 years of working experience. Consultancy in several environmental projects (forestry and climate change) i.e. Forest Carbon Partnership Facility (Ministry of Forestry – World Bank), UNDP REDD+, and Indonesian Palm Oil Pledges (IPOP). Auditing experiences as palm oil and forestry auditor for several certification bodies i.e. Control Union, Bureau Veritas, and currently as permanent auditor at TUV Rheinland.</p>

### 2.3 Assessment Methodology

The certification assessment conducted from May 29, 2017 to June 02, 2017 as per the assessment program below. The assessment carried out in accordance with TUV Rheinland Indonesia RSPO audit procedure as well as the RSPO Certification Systems document. During assessment, the qualified TUV Rheinland assessors used the RSPO standard as endorsed for the country in which the assessment took place and recorded their findings.

Due to the location and proximity of the estates, combined with common management systems, it was possible to carry out both field and document assessments of all estates within the period without compromising the integrity of the assessment in anyway.

All schemes visited and the assessment team carried out field and document assessments of compliance to all the RSPO principles and criteria. Common systems identified and specific evidence recorded for individual estates. Interviews conducted at all estates.

The auditee proposed the correction and corrective action for all identified non-conformities raised to the certification body 30 days after the closing meeting. Verification of closure of major non-conformances conducted 2 months after the closing meeting of the main assessment and implementation of corrective actions for minor non-conformities will verified during the next surveillance audit. The certification assessment agenda is as explained below.

# RSPO Certification Assessment Report

## KUD Karya Mulya



Bumi Makmur , Nibung Sub district, Musi Rawas District, South Sumatera Province,  
Indonesia

Page 14 of 75

### Main Assessment Agenda.

Date	Location/ Main sites	Main activities
29.05.2017	KUD Karya Mulya	Travelling , Opening meeting
30.05.2017	KUD Karya Mulya	Verification document related smallholder member, amount of smallholder member, legal land use rights, procedure, policy, record fo training and briefing, flora and fauna list, spraying and fertilizing activity record, IPM record, water surface management record, waste management, budget production projection for three years, environmental management.
31.05.2017	KUD Karya Mulya	Stakeholder Consultation
01.06.2017	Group Farmer : Sentosa	Field Observation
02.06.2017		Related smallholder member, amount of smallholder member, legal land use rights, procedure, policy, record fo training and briefing, flora and fauna list, spraying and fertilizing activity record, IPM record, water surface management record, waste management, budget production projection for three years, environmental management Closing meeting

### Agenda for Verification of Closure of Major Non-conformities

This agenda is not applicable because there is no verification of closure of major non-conformities is need to be done

Date	Location / Main sites	Auditor	Main activities
-	-	-	-

### 2.4 Stakeholder Consultation and Stakeholders Contacted

The stakeholder consultation involved both external and internal stakeholders. External stakeholders notified to make comments on the certification assessment by placing an invitation to comment on the RSPO website. Stakeholders included those immediately linked with the operation of the KUD Karya Mulya such employees, cooperative member, the local government, NGO's, local communities.

Stakeholder consultation took place in the form of meetings and interviews. Meetings with stakeholders held to seek their views on the performance of the organization with respect to the sustainability practices outlined in the RSPO Principles & Criteria, and to comment on aspects where improvements could made. Meetings with local communities held at their respective premises within and near the organization area. A stakeholder consultation meeting was conduct at Bumi Makmur Hall on May 31, 2017. Letters inviting individual stakeholders to the stakeholder consultation meeting were prepared and sent to the individual stakeholders, while telephone calls made to arrange the meetings.

In all the interviews and meeting, the objectives of the RSPO and the purpose of the assessment was clarified at the outset followed by an evaluation of the relationship between the stakeholders and the Organization before discussion proceeded to obtain the stakeholders feedback on the Organization's compliance to different aspects of the RSPO Principles & Criteria. Although several stakeholders were not familiar with RSPO but they agreed with its objective and expressed their willingness to collaborate in the promotion of sustainable palm oil in North Sumatera province. In all interviews and meeting, the assessment team did not restrict discussion of both the positive and negative aspects of operations conducted by Organization estate's estates.

The stakeholder consultation meeting held with stakeholders during the audit was extensive and productive, with an attendance of more than 10 persons. This followed by site inspections, including visits to the local communities, interviews with worker and member of Cooperative and inspections of worker infrastructure. All stakeholder issues raised were recorded and forwarded to the management for their written response, and this is summarized in Section 3.4. The list of stakeholders that attended the stakeholder consultation meeting and stakeholders interviewed during the assessment is included as Appendix 4.

### **2.5 Date of Next Surveillance Visit**

The next surveillance visit is planned for August 2018.



# RSPO Certification Assessment Report

## KUD Karya Mulya



Bumi Makmur , Nibung Sub district, Musi Rawas District, South Sumatera Province,  
Indonesia

Page 16 of 75

### 3.0 ASSESSMENT FINDINGS

#### 3.1 Summary of Findings

During the certification assessment, there are 19 **nonconformities** consist of 11 nonconformities were assigned against Major Compliance indicators and 8 nonconformities were assigned against Minor Compliance Indicators. There are 1 observation or opportunities for improvement were identified. Further explanation of the non-conformities raised and corrective actions taken by the company provided in Section 3.2.

The following is a summary of findings made for the criteria listed in the RSPO Management System Requirement and Guidance for Group Certification of FFB Production, March 2016.

#### A. Findings against requirements for Group Certification :

##### *Element 1.1: The Group Entity shall be legally formed*

##### **Findings:**

Karya Mulya Cooperative has documentary evidence of a clearly identified and legal entity such as:

1. Karya Mulya already has the deed of incorporation the cooperative with number 002765/BH/XX dated September 30, 1987 by Head Office of Cooperative Department South Sumatera Province.
2. Karya Mulya has the legalization of changes deed with number 002765/BH/PAD/VI.7 dated June 16, 2000 by Head Office of Cooperative Department South Sumatera Province.
3. Karya Mulya Cooperative has a company registration certificate with number 060555.1011106 are valid until September 3, 2020 with the kind of trading business of post-harvest KLBI 01630 endorsed by the Integrated Licensing Services Office of North Musi Rawas District on September 3, 2015.
4. Karya Mulya Cooperative has a Trade Business License (SIUP) with license number 07.04/108/BPM-PPT/IX/2015 with the type of business is post-harvest endorsed by the Integrated Licensing Services Office of North Musi Rawas District on September 3, 2015.
5. Karya Mulya Cooperative has a nuisance permit with number 02.06/158/BPM-PPT/IX/2016 with the type of business is distributor of SPBS endorsed by the Integrated Licensing Services Office of North Musi Rawas District on September 22, 2016
6. Karya Mulya Cooperative already has a registration as a member of the RSPO with a number of members 1-0229-17-000-00, with categories as ordinary membership, sectors of palm oil growers membership with membership period March 2017 - February 2019.
7. Karya Mulya Cooperative has declaration decree dated September 6, 2016 to appoint Mr. Suyono as Group Manager
8. Karya Mulya Cooperative already has an organizational structure and equipped with duties and responsibilities begin from group manager and group members

Karya Mulya cooperative has procedure of register of RSPO group membership with document number No. 001/SOP/KUD-KM/IX/2016 effective date September 22, 2016. The procedure has been described about the farmers must be member of Karya Mulya cooperative in accordance with articles of association of Karya Mulya cooperative at chapter VI about Membership.

Karya Mulya cooperative has procedure for in and out as member with document number No. 014/SOP/KUD-KM/IX/2016 dated September 22, 2016. The procedure has been regulated about mechanism to in and out membership such out with volunteer, out because buying and selling process or transfer of rights and out because taken out cause sanction or violation. The member of

##### **Compliance status: :**

Yes  No

NCR No.:

# RSPO Certification Assessment Report

## KUD Karya Mulya



Bumi Makmur , Nibung Sub district, Musi Rawas District, South Sumatera Province, Indonesia

group farmer has a copy of agreement to join as group member.

Karya Mulya cooperative have a written document that the group members has been formally joined the group and the agreement with the manager of the group which contains about commitments to comply with the RSPO requirements standards. The document such as a statement of willingness to join the RSPO certification and letter of list farmer group members. As an example:

- Farmer group of Krida Utama as much as 12 farmer
- Farmer group of Sri Rezeki B as much as 4 farmer

Karya Mulya Cooperative has the complete data related to land area in accordance with land ownership certificate (SHM) which owned by each member.

Karya Mulya Cooperative has procedure of Recording Control with the number of document No. 010/SK/KUD-KM/X/2016 dated October 3, 2016 where in the procedures listed the annex of master list documents in which there is the keeping period of the document. The procedure described that the keeping period as long as 5 years.

Group Manager has been communicated the character and structure of the Karya Mulya cooperative to all members The socialization has been conduct on January 2017 and equipped with minutes of socialization.

### **Element 1.2: The Group shall be managed by a Group Manager**

#### **Findings:**

Karya Mulya cooperative has a procedure of Internal Audit with the number of document No. 026/SOP/KUD-KM/X/2016 effective date October 3, 2016. Karya Mulya cooperative has been conducted an internal audit on November 10 to 11, 2016.

Based on interviews with the Group Manager, that the group manager already has the ability and knowledge of the principles and criteria for palm oil production.

Karya Mulya cooperative has a recapitulation of cash in 2017. According to the profit report per April 2017 known that Karya Mulya cooperative has a cash balance of IDR. 324,035,950. Based on the cash balances is known that Karya Mulya cooperative has implemented with good management.

The Group Manager has been socialized about information related certification smallholder member such as:

- An explanation of the RSPO certification process.
- An explanation of the criteria for group membership.
- An explanation as to the Group Manager's needs and the rights of the certification body to access the group members' documentation and plantations for the purposes of evaluation and monitoring.
- An explanation of the certification bodies and RSPO requirements with respect to public information.
- An explanation of any obligations with respect to group membership, such as:
  - ✓ Maintenance of information for monitoring purposes;
  - ✓ Requirement to conform to conditions or corrective actions issued by the certification body.
  - ✓ Explanation of any costs associated with group membership.
  - ✓ Other obligations of group membership.

The Group Manager will give information as required with standard to potential

#### **Compliance status :**

Yes  No

NCR No.:

# RSPO Certification Assessment Report

## KUD Karya Mulya



Bumi Makmur , Nibung Sub district, Musi Rawas District, South Sumatera Province, Indonesia

member if the potential member has been register to join with group member.

**Element 2.1: The Group Internal Control System shall contain documented policies and procedures for operational management.**

**Findings:**

The group manager has been identifying with completely the geographical area to be covered by the group. Group manager has map of identifying the geographical area for each group and farmer.

Group manager has clearly map related the area of member that include in scope certification. Record of total area for each farmer has been adjusted with owned legal entity. Group manager has been preparing, maintaining and documenting the group management structure. Group manager also has been identifying the responsibilities of all individuals employed for the running of the group.

Group Manager has SOP of Member Registration of RSPO Certification Group No.001 / SOP / KUD-KM / IX / 2016 dated September 22, 2016 where in the procedure stated that farmers are required to be members of KUD Karya Mulya by procedure in accordance with KUD Karya Mulya's Articles of Association. In the constitution of KUD Karya Mulya Chapter VI on membership.

Group manager has clearly map related the area of member that include in scope certification. Record of total area for each KUD has held an Annual Members Meeting on March 28, 2016 which was attended by 115 members of the cooperative.

KUD has SOP of Internal Audit Implementation No. 026 / SOP / KUD-KM / X / 2016 dated October 3, 2016. KUD has conducted an internal audit from November 10-11, 2016

KUD Karya Mulya has SOP of Document Save Time. 010 / SK / KUD-KM / X / 2016 dated October 3, 2016 where in the procedure stated the retention period of documents related to RSPO certification is valid for 5 years.

KUD already has a full list of group member names and contact details for each farmer.

KUD have a clear map of the land of members who fall within the scope of certification and which is not within the scope of certification. KUD already has a list of names of each member of the cooperative as well as the area of each member's land according to certificates. As an example:

- Sukardi (KT Krida Utama)
- Marwanto (KT Krida Utama)
- Wakiran (KT Sasana Sejahtera)
- Kasiman (KT Sasana Sejahtera)

**Compliance status: :**

Yes  No

NCR No.:

**Element 3.1: The Group Internal Control System shall develop and implement an internal audit programme of Group members.**

# RSPO Certification Assessment Report

## KUD Karya Mulya



Bumi Makmur , Nibung Sub district, Musi Rawas District, South Sumatera Province, Indonesia

**Findings:**

KUD Karya Mulya has procedure of Internal Audit Implementation No. 026 / SOP / KUD-KM / X / 2016 issued date on October 3, 2016. In the procedure is mentioned that internal audit conducted once a year. The procedure also described about risk assessment on members to determine the intensity of sampling needed. The level of risk set by the group Manager is low risk, because the group of farmers who are relatively homogeneous both in terms of geography and socio economy and the group is not currently doing the replanting, no expansion and no new members.

KUD Karya Mulya has been conducted an internal audit on November 10-11, 2016. KUD Karya Mulya has determined the names of internal auditors on November 9, 2016. Group manager also has internal audit program. An internal audit program has been contained about schedule of audit and schedule for completion of the non-compliance. KUD Karya Mulya conduct an internal audit for the entire group of farmers who joined the cooperatives are included in the scope of the RSPO certification performed once every a year. KUD Karya Mulya has record of internal audit.

Group Manager and internal auditor have socialized verbally to the members that the group manager and internal auditor has no conflict of interest for internal audit process on May 31, 2017. However, there are still members who have not followed the socialization. Auditor raise as non conformity. **No.: RSPO01104 (E 3.1.3)**

KUD Karya Mulya has a procedure for initial gap audit to new member, namely procedure for criteria and requirements to become a new member, No. 027/SOP/KUD-KM/X/2016 issued date on September 22, 2016. The procedure explained that Group Manager will be check the suitability of the data and suitability of land or conduct a preliminary assessment to see the compliance with the RSPO standard. Group manager maintain record of initial gap process, namely letters of willingness to participate for RSPO certification. The letters stated that no cultivation has replaced the primary forest, No existing land conflict and members must have evidence of land right certificate.

**Compliance status: :**

Yes  No

NCR No.: RSPO01104  
E 3.1.3

**Element 3.2: The Group Internal Control System shall include a system in place to enable the trading of RSPO certified Fresh Fruit Bunches (FFB) produced from the Group.**

**Findings:**

Karya Mulya Cooperative has procedure of FFB production traceability with document number 002/SOP/KUD-KM/IX/2016 effective date September 22, 2016. The procedure has been regulated about system documentation and system to track and find the FFB produced by members of the group from the temporary collection (TPH) until transporting to the mill. The procedure has been regulated that the FFB came from group member include at scope of certification will be give Mass Balance certified stamp and for non-certified only give cooperative stamp.

Karya Mulya cooperative has recording related sales of FFB from entire member of group i.e:

- Invoice and payment receipt of FFB. For example payment FFB for period I of April 2017 with total FFB as much as 510,430 kg and the price as much as IDR. 1,722.92/kg so the total amount of FFB price as much as IDR. 879,430,056.
- Information about number of transportation listed in letter of FFB transportation
- FFB classification that sale of certified or non-certified, volume and des-

**Compliance status: :**

Yes  No

NCR No: -

# RSPO Certification Assessment Report

## KUD Karya Mulya



Bumi Makmur , Nibung Sub district, Musi Rawas District, South Sumatera Province, Indonesia

<p>mination of FFB</p> <ul style="list-style-type: none"> <li>• The relevant group members' group identification number.</li> <li>• Information of FFB price.</li> </ul> <p>Karya Mulya Cooperative has procedure of Recording Control with the number of document No. 010/SK/KUD-KM/X/2016 dated October 3, 2016 where in the procedures listed the annex of master list documents in which there is the keeping period of the document. The procedure described that the keeping period as long as 5 years.</p> <p>Karya Mulya Cooperative does not has a business for sale and purchase FFB with outsiders besides with PT PP London Sumatera Indonesia, Tbk. Karya Mulya cooperative has an agreement with PT PP London Sumatera Indonesia Tbk dated October 27, 1999.</p>	
--	--

### B. Findings against RSPO Independent Smallholder :

**Criterion 1.1: Oil palm growers and millers provide adequate information to other stakeholders on environmental, social and legal issues relevant to RSPO Criteria, in appropriate languages & forms to allow for effective participation in decision making.**

**Findings:**

Group managers able to show evidence of socialization to all stakeholders of the Cooperative in relation to RSPO principles and criteria of socialization carried out in conjunction with the preparation of SIA documents. (January to February 2017).

Based on interviews with members of cooperatives and stakeholders, they have understood and acknowledged the RSPO principles and criteria. The farmers has been understand that all information have to be addressed to the Group Manager. KUD always gives response to information request.

KUD Karya Mulya has procedure of Data and Information Request No. 013/SOP/KUD-KM/IX/2016, September 22, 2016. All information request was addressed to KUD Karya Mulya, recording of incoming letter from external were documented in Log Communication. All information requested was responded. the person in charge to record all the information is secretary Group Manager/KUD. Result of interview with Cooperative staff was known that communication from stakeholder to KUD via formal letter .

Example of request record :

Letter No.422 / 002 / Baitussolihin Great Mosque concerning the request for funding the construction of the Great Mosque of Bumi Makmur Village on March 25, 2016, the response in through the transfer of funds amounting to IDR. 700,000 to the mosque building committee on April 21, 2016.

**Compliance status:**

Yes  No

NCR No: -

**Criterion 1.2: Management documents are publicly available, except where this is prevented by commercial confidentiality or where disclosure of information would result in negative environmental or social outcomes.**

**Findings:**

To make sure that relevant information is available for public, KUD has developed SOP on data and information provision namely SOP Permintaan Data dan Informasi (no: 013/SOP/KUD-KM/IX/2016 dated 22 September 2016). There it is stated that information will be provided when there is formal letter from stakeholder. The types of publicly available information is arranged by Information Section on the KUD structure. Based on document verification the KUD has the following documents in place:

**Compliance status:**

Yes  No

NCR No: -

# RSPO Certification Assessment Report

## KUD Karya Mulya



Bumi Makmur , Nibung Sub district, Musi Rawas District, South Sumatera Province, Indonesia

Page 21 of 75

- Land Titles/user right, e.g. Mr. Yuhono
  - SHM: no 1678 of 19.200 m<sup>2</sup> on 2 May 2001
  - STDB no: 01.05/178/BPM-PPT/XII/2016 for 19.200 m<sup>2</sup> dated 22 December 2016 by Badan Penanaman Modal dan Pelayanan Perizinan Terpadu.
- OHS Plans: Sasaran dan Program K3 dated 1 February 2017, including schedule of implementation from 2016-2017.
- HCV documentation: Laporan Penilaian NKT di Areal Usaha Perkebunan Sawit Petani KUD karya Mulya January 2017
- Pollution prevention and reduction plans: Rencana Peningkatan dan Pemantauan Efisiensi Penggunaan Bahan Bakar Fosil.
- Details of complaints and grievances: there is logbook of complaints and grievances along with the responses.
- Negotiation procedures SOP Pengaduan Anggota KUD (006/SOP/KUD-KM/IX/2016).
- Continuous improvement plans: Surat Keputusan Komitmen Perbaikan Terus Menerus (no: 14/SK/KUD-KM/X/2016 dated 3 October 2016)
- Public summary of certification assessment report: will be further verified during the next audit.
- Human Rights Policy: Surat Keputusan no: 003/SK/KUD-KM/IX/2016 tentang Hak Asasi Manusia dated 22 September 2016.

- KUD has already identified which data and information are publicly available, sighted the document of Data Yang Boleh Diberikan – Data Yang Tidak Boleh Diberikan.

The members have been informed and made aware of publicly available document and code of ethics. Evidence on the dissemination of SOP Permintaan Data dan Informasi (no: 013/SOP/KUD-KM/IX/2016 dated 22 September 2016) and code of ethics policy. This is evidenced by:

- Meeting Attendance List KUD Karya Mulya regarding Sosialisasi RSPO & SOP KUD Karya Mulya on 30 January 2017 attended by 24 participants. Minutes on Socialisation Regarding RSPO at Blok C no; 01/KUD-KM/II/2017 on 30 January 2017.
- Meeting Attendance List KUD Karya Mulya regarding Sosialisasi RSPO & SOP KUD Karya Mulya on 1 February 2017 attended by 21 participants. Minutes on Socialisation Regarding RSPO at Blok C no; 03/KUD-KM/II/2017 on 1 February 2017.
- Meeting Attendance List KUD Karya Mulya regarding Sosialisasi Terkait RSPO dan SOP KUD on 31 January 2017 attended by 24 participants.
- Minutes on Socialisation Regarding RSPO at Block B no; 02/KUD-KM/II/2017 on 31 January 2017.

Based on interview with KUD members, i.e.

- Yuhono (Kusuma Bakti A Farmers Group)
- Suyadi (Kusuma Bakti B Farmers Group)
- Jumirah (Sri Rejeki B Farmers Group)
- Yasin Anshori (Tunas Baru Farmers Group)

It was verified that the KUD policy on code of ethics has been understood by the members.

**Criterion 1.3. Growers and millers commit to ethical conduct in all business operations and transactions.**

**Findings:**

- KUD has policy in place committing to a code of ethical conduct and integrity in all operations and transactions, i.e. Decree No.008/SK/KUD.KM/IX.2016 concerning Ethical Behaviour dan Prohibition on any form of corruption, collusion, and nepotism dated 22 September 2016.

**Compliance status:**

Yes  No

NCR No: -



# RSPO Certification Assessment Report

## KUD Karya Mulya



Bumi Makmur , Nibung Sub district, Musi Rawas District, South Sumatera Province, Indonesia

The content of the policy i.e.:

- Prohibition on any form of corruption, collusion, and nepotism
- Prohibition on data manipulation
- Prohibition on fraudulent acts
- Prohibition on black campaign

**Criterion 2.1: There is compliance with all applicable local, national and ratified international laws and regulations.**

**Findings:**

KUD Karya Mulya has a list of legal and requirement presented in list of regulation references This law and regulation covered about legality, plantation, environmental, worker, and others related law and regulation should be fulfilled by organization.

KUD Karya Mulya has record of law and regulation compliance presented in document of compliance with laws and regulations. There are evidences that law and regulation compliance such as :

- a. KUD Karya Mulya has complied with the Law no. 12/1992 with evidence is the organization have SOP for crop cultivation
- b. KUD Karya Mulya has complied with the law No. 25/1992 with evidence is the organization has legality entity document, No. 002765/BH/PAD/VI/7, issued date on June 16, 2000 by Head Office of Cooperative Department South Sumatera Province.

In terms of legal compliance in environmental aspect, KUD Karya Mulya is already undergoing independent smallholder scheme, although the EIA document is still included in PT PP Lonsum AMDAL, which according to current situation, is not relevant anymore (especially the management and monitoring plan). There is no environmental permit document established yet by local authority, this is a non compliance against Ministry of Environment Regulation No 13 year 2010 regarding Environmental Management Effort and Environmental Monitoring Effort and Letter of Ability to Conduct Environmental Management and Monitoring. It raised non conformity. **RSPO01105 (2.1.1)**

All copies of law and regulations is available and maintained such as : Law no.12 year 1992, Law no.32 year 2009,, Law no.13 year 2003, Law no.23 year 2007, Law no. 04 year 1982, regulation no. 13/1982, Law no. 25 year 1992,, Governme(nt Regulation No. 7 year 1999, Government Regulation No.16 year 2007, Government Regulation No.74 year 2001, Ministry of Agriculture Regulation No. 1 year 2007, Ministry of Agriculture Regulation No. 14 year 2009, Ministry of Agriculture Regulation No. 82 year 2013, Ministry of Agriculture Regulation No. 14 year 2013, Ministry of Environment Regulation No.13 year 2010, Ministry of Environment Regulation No. 12 year 2012, Law No 18 year 2008.

Group Manager has a mechanism for identify and circulating the law and regulation presented in procedure for identification, implementation, circulating and updating regulation, no doc. 033/SOP/KUD-KM/X/2016, issued on date October 3, 2016. In The procedure is mentioned that law and regulation obtained from government agencies, newspaper and internet. Organization shall be circulating law and regulation to group member through regular meeting, install signboard contains relevant law and regulation. There is record of socialization of law and regulation for group members, worker and and office staff such as :

- Sosialization of law and regulation for worker and office staff on May 31, 2017, attended by 38 partisipant
- Sosialization of law and regulation for group members on January 30, 2017, attended by 24 partisipant
- Sosialization of law and regulation for group members on January 31,

**Compliance status: :**

Yes  No

RSPO01105

RSPO01106



# RSPO Certification Assessment Report

## KUD Karya Mulya



Bumi Makmur , Nibung Sub district, Musi Rawas District, South Sumatera Province, Indonesia

<p>2017, attended by 21 participant</p> <p>Group manager has a mechanism for ensuring that the laws are being implemented through internal audit as stated in procedure for identification, implementation, circulating and updating regulation, No doc. 033/SOP/KUD-KM/X/2016, issued on date October 3, 2016. Group manager has conducted internal audit on November 10 -11, 2016.</p> <p>Group manager has checklists that group members can use to help them implement the legal requirements, namely Monitoring Sheet on Implementation of the regulation. However during interview with group member, there is no evidence that group members have been filled the checklists from group manager for guarantee legal compliance. This condition, auditor raises as non conformity. <b>RSPO01106 (2.1.2)</b></p> <p>For updating law and regulation, Group manager uses procedure for identification, implementation, circulating and updating regulation, No doc. 033/SOP/KUD-KM/X/2016, In the procedure is mentioned law obtained from internet government agencies and newspaper and conducted once a year. KUD Karya Mulya has update regulation with in "Daftar referensi peraturan". There is record of update regulation on date January 2, 2017.</p>	
--	--

**Criterion 2.2: The right to use the land can be demonstrated, and is not legitimately contested by local communities with demonstrable rights.**

<p><b>Findings:</b></p> <p><u>Group Manager</u> The group manager able to show the evidence of land title. Some sample of land title such as:</p> <ul style="list-style-type: none"> <li>• Kasrin (Member of Usaha Baru): Land own certificate No. 2110 with total area is 19,830 m2 located in Bukit Makmur village, Nibung Sub District, Musi Rawas District, South Sumatera Province dated issued 18 July 2005.</li> <li>• Amirudin (member of Usaha Baru): Land own certificate No. 2107 with total area is 19,830 m2 located in Bukit Makmur village, Nibung Sub District, Musi Rawas District, South Sumatera Province dated issued 18 July 2005.</li> <li>• Amirudin (member of Kusuma Bakti): Land own certificate No. 1641 with total area is 19,200 m2 located in Bukit Makmur village, Rawas Ilir Sub District, Musi Rawas District, South Sumatera Province dated issued 2 May 2001.</li> <li>• Samiran (member of Tani Mulya A): Land own certificate No. 1623 with total area is 19,050 m2 located in Bukit Makmur village, Rawas Ilir Sub District, Musi Rawas District, South Sumatera Province dated issued 2 May 2001.</li> <li>• Kadrianto (member of Tani Mulya A): Land own certificate No. 1623 with total area is 19,970 m2 located in Bukit Makmur village, Rawas Ilir Sub District, Musi Rawas District, South Sumatera Province dated issued 2 May 2001</li> <li>• Parjono (member of Tani Mulya A): Land own certificate No. 2421 with total area is 22,500 m2 located in Bukit Makmur village, Nibung Sub District, Musi Rawas District, South Sumatera Province dated issued 25 August 1992</li> <li>• Prasetyono (member of Tani Mulya A): Land own certificate No. 1657 with total area is 19,970 m2 located in Bukit Makmur village, Rawas Ilir Sub District, Musi Rawas District, South Sumatera Province dated issued 2 May 2001</li> <li>• Sutrisno (member of Tani Mulya A): Land own certificate No. 1659 with total area is 19,970 m2 located in Bukit Makmur village, Rawas Ilir Sub</li> </ul>	<p><b>Compliance status:</b> :  <input checked="" type="checkbox"/> Yes <input type="checkbox"/> No</p> <p>NCR No: -</p>
--	--

# RSPO Certification Assessment Report

## KUD Karya Mulya



Bumi Makmur , Nibung Sub district, Musi Rawas District, South Sumatera Province, Indonesia

Page 24 of 75

<p>District, Musi Rawas District, South Sumatera Province dated issued 2 May 2001</p> <ul style="list-style-type: none"> <li>• Suwandi (member of Bumi Asih): Land own certificate No. 1824 with total area is 20,050 m2 located in Bukit Makmur village, Rawas Ilir Sub District, Musi Rawas District, South Sumatera Province dated issued 2 May 2001</li> <li>• Sungkono (member of Bumi Asih): Land own certificate No. 1806 with total area is 20,050 m2 located in Bukit Makmur village, Rawas Ilir Sub District, Musi Rawas District, South Sumatera Province dated issued 2 May 2001</li> <li>• Muhyidin (member of Bumi Asih): Land own certificate No. 1868 with total area is 20,050 m2 located in Bukit Makmur village, Rawas Ilir Sub District, Musi Rawas District, South Sumatera Province dated issued 2 May 2001</li> <li>• Sujyanto (member of Bumi Asih): Land own certificate No. 1823 with total area is 20,050 m2 located in Bukit Makmur village, Rawas Ilir Sub District, Musi Rawas District, South Sumatera Province dated issued 2 May 2001</li> <li>• Apriansyah (member of Tani Mulya B): Land own certificate No. 1630 with total area is 20,050 m2 located in Bukit Makmur village, Rawas Ilir Sub District, Musi Rawas District, South Sumatera Province dated issued 2 May 2001</li> </ul> <p>The member of group has a pillar to show the land demarcation. Based on interview with member of group, there is no conflict between members.</p> <p>During the audit activities there is no land that is in conflict status, however there are some areas that have been compensated because the land was a customary right/land of the Suku Anak Dalam community. Group Managers have a recording of land compensation / substitution of planted land from the heirs of the Nenek Malim Kumbang bin Mangku Alam (deceased) located in the land of Cooperative members.</p> <p>Some examples of recording the compensation process in the Cooperative with both parties consensus :</p> <ol style="list-style-type: none"> <li>1. Yoyok Sugianto with Efendi (heir) on June 16, 2016, located in Krida Utama Farmer Group Block 22 A of 2 Ha with compensation IDR. 25.000.000, - (Certificate No. 1751, Plot No. 202)</li> <li>2. Marwanto with Efendi (heir) on June 16, 2016, located in Krida Utama Farmer Group Block 22 B of 2 Ha with compensation costs IDR. 25,000,000, - (Certificate No. 1748, Plot No. 199)</li> <li>3. Yoyok Sukiman with Efendi (heir) on June 16, 2016, located in Krida Utama Farmer Group Block 22 C of 2 Ha with compensation costs IDR. 25.000.000, - (Certificate No. 1793, Plot No. 210).</li> <li>4. Yoyok Sukiman with Efendi (heir) on June 16, 2016, located in Krida Utama Farmer Group Block 22 D of 2 Ha with compensation costs IDR. 25.000.000, -(Certificate No. 1789, Plot No. 206)</li> </ol> <p>There is no land conflict in the operational area of the Cooperative. So there is no harsh activities in plantation operations.</p>	
---	--

**Criterion 2.3: Use of land for oil palm does not diminish the legal rights, or customary rights, of other users, without their free, prior and informed consent.**

**Findings:**

Based on interview result with farmers, it was known that no communal/customary land rights on their farming land, and no land dispute cases. Therefore KUD has not map related legal or customary right in cooperative area. All member of KUD already have Certificate of land ownership.

**Compliance status: :**

Yes  No

# RSPO Certification Assessment Report

## KUD Karya Mulya



Bumi Makmur , Nibung Sub district, Musi Rawas District, South Sumatera Province, Indonesia

**Criterion 3.1: There is an implemented management plan that aims to achieve long-term economic and financial viability.**

**Findings:**

KUD has not create long term budget for economic and financial viability. PnC does not require this document for independent smallholder.

NA

**Compliance status: :**

Yes  No

NCR No: -

**Criterion 4.1: Operating procedures are appropriately documented and consistently implemented and monitored.**

**Findings:**

KUD Karya Mulya already set a procedure for plantation management covering land preparation, nursery, harvesting, replanting, pruning, pest management, soil erosion, weeding control. Organization has conducted sosialisasi of the procedures for group member on September 18-20 2016. However, during document verification and interview to group manager and members there found members who have not followed the socialization of the procedure. Auditor raises as non-conformity **RSPO01107 (4.1.1)**

Group manager has a mechanism for check procedure implementation through internal audit presented in procedure of Internal Audit Implementation No. 026 / SOP / KUD-KM / X / 2016 issued date on October 3, 2016. In the procedure mentioned, that internal audit conducted once a year. Group Manager has been conducted internal audit on November 10-11, 2016. Base on internal audit report, there is no evidence that group manager has been conducted internal audit for check procedure implementation by group member. Auditor raises as non-conformity. **RSPO01108 (4.1.2)**

The member of group has been record for each activity in the plantation in accordance with procedure that has issued. There is evidence of implementation the procedure such as record of fertilizer, harvesting and herbicide used.

Group manager has been conduct monitoring for result of activity such as record of fertilizer, harvesting and herbicide used. Group manager maintained for all record. Group manager has location map of member group. The location map of member group used as guidance for identification location of FFB source from each member of group.

**Compliance status: :**

Yes  No

NCR No:  
RSPO01107  
RSPO01108

**Criterion 4.2: Practices maintain soil fertility at, or where possible improve soil fertility to, a level that ensures optimal and sustained yield.**

**Findings:**

KUD Karya Mulya has a procedure for manage soil fertility as state procedure for oil palm fertilizing, No. doc. 018/KUD-KM/2016, issued date on September 22, 2016. In the procedure is mentioned doses, fertilizer application and type of fertilizer. Group manager has been conducted sosialisasi of procedure about fertilizing, However there is found members who have not followed procedure about fertilizing.. This is under non-conformity in criterium 4.1. **RSPO01107.**

Group Manager has submitted template record of fertilizer application presented in record of fertilizer usage to all group member. During document verifica-

**Compliance status: :**

Yes  No

NCR No:  
RSPO01107  
RSPO01109

# RSPO Certification Assessment Report

## KUD Karya Mulya



Bumi Makmur , Nibung Sub district, Musi Rawas District, South Sumatera Province, Indonesia

tion, there is evidence that Group member maintain record of fertilizer usage in 2017. example : Sumali from Bumi Asih farmer group : amount of fertilizer usage on June, 2017 : Ponska = 500 kg ; Suyadi from Kusuma Bakti B farmer group : amount of fertilizer usage on June, 2017 : Ponska = 500 kg

Group Manager has a procedure for tissue and soil sampling presented in procedure for tissue and soil sampling, No. 015/SOP/KUD-KM/IX/2016. Group manager have not been conducted soil and tissue sampling and analysis. Auditor raises as non conformity. **RSPO01109 (4.2.3)**

Base on interview with group manager, there is no use nutrient recycling for the group.

**Criterion 4.3: Practices minimise and control erosion and degradation of soils.**

**Findings:**

KUD Karya Mulya does not have soil and slope map. This condition, auditor raises as non conformity **RSPO01110 (4.3.1)**. During field verification at farmer group of Bina Tani Sejahtera, no found peat soil and at farmer group of Gading Mulya is found peat soil. Group manager did not has policy planting for slope, because no found slope above 40%.

KUD Karya Mulya has a road maintenance program in 2017. There are several implementation of road maintenance program in 2017 such as to dispose water on the production road, to cutting trees on the production road, to Improve the water ways. During field verification at farmer group of Bina Tani Sejahtera, there is found road maintenance.

KUD Karya Mulya has procedure for monitoring peat presented in procedure for Monitoring of subsidence of Peatland, No. doc. 034/SOP/KUD-KM/X/2016 issued on ssued date on September 22, 2016. The Procedure mentioned that monitoring of peat conducted twice a year. However, in the procedure has not explained reference to the water level in water leveling and peat depth, how to mechanism if record of water level is not comply with standard, Beside that there is no evidence that procedure for Monitoring of subsidence of Peatland implemented. For this condition, Auditor raise as non conformity. **RSPO01111 (4.3.4)**

The Group Manager has not made a routine assessment schedule of drainability / absorption of water to the ground for the group as well as the recording of its implementation. **RSPO01112 (4.3.5)**

**Compliance status: :**

Yes  No

NCR No:  
RSPO01110,  
RSPO01111,  
RSPO01112

**Criterion 4.4: Practices maintain the quality and availability of surface and ground water.**

**Findings:**

KUD Karya Mulya has procedure for water management and water source, No. 025/SOP/KUD-KM/X/2016 issued date on October 3, 2016. This procedure mentioned install boundary markers in riparian river, to conduct restoration through planting trees in riparian river and Prohibited the use of chemicals in riparian river. Base on HCV map, there is found water source, namely Keruh river.

KUD Karya Mulya has a water management plan in 2017 such as : install boundary markers in riparian river, install signboard Prohibited the use of chemicals in riparian river.

Some of condition does not compliance such as:

- There is no evidence implementation of water management plan at

**Compliance status: :**

Yes  No

NCR No:  
RSPO01113  
RSPO01114

# RSPO Certification Assessment Report

## KUD Karya Mulya



Bumi Makmur , Nibung Sub district, Musi Rawas District, South Sumatera Province, Indonesia

Page 27 of 75

<p>Keruh river</p> <ul style="list-style-type: none"> <li>• During field verification at farmer group of Sri Rezeki B, there is no evidence to water management at Keruh river.</li> </ul> <p>This condition, auditor raises as non conformity. RSPO01113 (4.4.1)</p> <p>Beside that, during field verification at group farmer of Sri Rezeki B, there is no effort to protection the buffer zone at Keruh river. Auditor raise as non conformity. RSPO01114 (4.4.2)</p> <p><b><i>In this case HCV area located outside the plantation of KUD member which involved in RSPO certification. Otherwise HCV management under KUD responsibilities.</i></b></p>	
---	--

**Criterion 4.5: Pests, diseases, weeds and invasive introduced species are effectively managed using appropriate Integrated Pest Management (IPM) techniques.**

<p><b>Findings:</b></p> <p>The group manager has procedure of integrated pest management (IPM) with document number No.021/SOP/KUD-KM/X/2016 dated 3 October 2016. The group manager has set unit of pest management and has assigned the personnel i.e. Yuhono and Suwandi. Group manager has set IPM plan year 2017 that stated in matrix of sustainable improvement program year 2017.</p> <p>Based on field visit, the cooperative also planting the beneficial plant such as <i>Turnera subulata</i> and <i>Antigonon leptosus</i>.</p> <p>Based on interview and verification document, member of group has been providing training of integrated pest management (IPM). The IPM training has been conduct on 13 November 2016 and 1 February 2017.</p>	<p><b>Compliance status: :</b>  <input checked="" type="checkbox"/> Yes <input type="checkbox"/> No</p> <p>NCR No:-</p>
---	---

**Criterion 4.6: Agrochemicals are used in a way that does not endanger health or the environment.**

<p><b>Findings:</b></p> <p>Group manager has been provide information about pest and diseases and chemical by training of pest and diseases and socialization of chemical used that has been conduct on 30-31 January 2017 and 1 February 2017. Based on interview with member of group, the member has been understand about the chemical which used and target of the chemical used. The member of group also has been provide socialization of chemical used on 30-31 January 2017 and 1 February 2017.</p> <p>The member of group has been record of pesticide used. For example Mr. Kasiman has been used Glyphosate as much as 5 liter from January until May 2017. The farmer has get the information related pesticide used by awereness training. The farmer conduct spraying with glyphosat because the type of weeds is soft weeds. Based on field visit, the farmer more often used cutter grass to eradicate the weeds than using pesticide.</p> <p>The group manager has planning to reduce of chemical used with substitution to manual by used cutter grass to control the weeds. Based on verification document, there is no prophylactic pesticide used.</p> <p>The group manager has list of pesticide in accordance with regulation of Agriculture Minister No : 24/Permentan/SR.140/4/2011 dated 8 April 2011. The list of pesticide has been stated the limited pesticide in accordance with national regulation.</p> <p>The group manager has procedure about management of chemical containers (No.007/SOP/KUD-KM/IX/2016 dated 22 September 2016). The procedure has</p>	<p><b>Compliance status: :</b>  <input checked="" type="checkbox"/> Yes <input type="checkbox"/> No</p> <p>NCR No:-</p>
---	---



# RSPO Certification Assessment Report

## KUD Karya Mulya



Bumi Makmur , Nibung Sub district, Musi Rawas District, South Sumatera Province, Indonesia

been described that the chemical container can't use to other purpose, can't dumping and can't throwing to other place but sent to temporary storage that has been providing. Based on interview with member of group, the member of group has been understand about this procedure. Some of implementation of this procedure i.e. there is record of chemical container receipt in the temporary storage. For example member of group on behalf Mr. Sutini has been conduct spraying by used Glyphosate on 5 March 2017 and the chemical container sent to group manager on 5 March 2017. Based on interview and field visit, the farmers does not store in their homes but they buy pesticides to used as needed on that day.

The group manager has been conduct socialization and training about method of pesticide used to minimize risk and impact i.e. socialization of PPE used and mechanism of the best practice of spraying. Cooperative of Karya Mulya does not conduct pesticide application by aerially.

The group manager has been conduct identification of medical checkup needs for each member and worker which conduct handling of chemical. Group manager will conduct medical checkup on June 2017. The implementation result of medical checkup will be check at next surveillance. The group manager has Decree Letter No: 016/SK/KUD-KM/IX/2016 dated 22 September 2016 related prohibition to employing the pregnant and breast-feeding women related handling of chemical. Based on interview, the member of group has been understand and there is no women which employing on chemical activity.

**Criterion 4.7: An occupational health and safety plan is documented, effectively communicated and implemented.**

**Findings:**

The group manager has safety and health policy that has been set on 22 September 2016. The safety and health policy has been socialized to entire member of group on 30 January 2017 until 1 February 2017. The group manager has safety and health program and has been fulfilled with time of implementation and person in charge to monitoring. Some realization of safety and health program such as first aid training, handover of PPE, socialization of safety and health policy. Based on interview with member of group, the member has been collaborated with group manager to identify the risk which can occur in the field.

The group manager has been conduct a risk assessment together with member of group and the risk assessment has been cover entire activity. The member of group has been provided training related safety and health on 19-21 September 2016 and 2 February 2017. The group manager has been conduct first aid training on 12 November 2016 and 2 February 2017. The member has been provided PPE such as helm, glasses and gloves on January 2017. Based on interview and document verification, the head of farmer group has been provided first aid kit on 28 May 2017 and has been equipped with minutes of handover the first aid kit.

The group manager has been assigned structure of safety and health unit which responsible by Mr. Y. Sugiyanto and Praswono. The group manager has been conduct meeting with safety and health unit on 30 May 2017 and discuss about planning of medical checkup for sprayer.

The group manager has plan to identify the member of group related registering of health insurance. The realization of this plan will be check in the surveillance audit. The group manager has form to record if any accident to member of group. Based on verification document, there is no accident that occurred from January until April 2017.

**Compliance status: :**

Yes  No

QA

NCR No: -

**Criterion 4.8: All staff, workers, smallholders and contractors are appropriately trained.**

# RSPO Certification Assessment Report

## KUD Karya Mulya



Bumi Makmur , Nibung Sub district, Musi Rawas District, South Sumatera Province, Indonesia

**Findings:**

KUD Karya Mulya has a training program in 2017 such as training of P & C RSPO, training of HCV, training of waste management, training of IPM, So-sialization of ICS. There is record of training in 2016 and 2017 such as :

- a. Training of early detection, census and integrated pest management on February 18, 2017
- b. Training of waste management on January 30, 2017
- c. Training of P&C RSPO and HCV on January 28, 2017
- d. Sozialisazation HCV, SOP and Regulation on January 30, 2017
- e. Training of Chemical and IPM on February 1, 2017
- f. Training of first aid on February 2, 2017
- g. Training of HCV on November 9, 2016
- h. Training of GAP on September 19, 2016

However, there found that group members not yet follow training of P&C RSPO. Auditor raise as non-conformity.

During document verification and interview with group manager, there is no evidence that workers has been followed a training required (**e.g harvesting, fertilizing**). Auditor raises as non conformity. **NCR No: RSPO01115**

KUD Karya Mulya maintain record of training of each group member such as information of training type, certificate, duration and date of training

**Compliance status: :**

Yes  No

NCR No: RSPO01115

**Criterion 5.1: Aspects of plantation and mill management, including replanting, that have environmental impacts are identified, and plans to mitigate the negative impacts and promote the positive ones are made, implemented and monitored, to demonstrate continuous improvement.**

**Findings:**

KUD Karya Mulya area is still included in the scope of AMDAL from PT PP Lonsum. This is evidenced by Revisi ANDAL PT PP London Sumatera Indonesia Tbk July 2003, approval No: 660/398/Bapedalda/2003 dated 22 July 2003. The environmental monitoring plan is developed by PT PP Lonsum as a company which includes KUD area when it was part of the company's plasma (schemed smallholder). This is evidenced by study area map Bingin Teluk Location scale 1:100.000, where the map of KUD area is included inside the company's area.

However, currently KUD Karya Mulya is already undergoing independent smallholder scheme. With the EIA document is still included in PT PP Lonsum AMDAL, according to current situation, this is not relevant anymore (especially the management and monitoring plan). There is no evidence that environmental permit has been issued by authority encompassing all members in the certification scope. **RSPO01116 (5.1.1)**

There is no evidence of environmental permit document issued by local authority covering all farmers in the scope of certification of KUD Karya Mulya. Moreover there is no mitigation plan to reduce environmental impact since there is no environmental permit yet. **RSPO01117 (5.1.2)**

Since environmental permit document is still not available yet, thus there is no mitigation plan in place which shall be reviewed as a minimum every two years to reflect the results of monitoring and where there are operational changes that may have positive and negative environmental impacts. The existence of such planning will be further verified when the environmental permit has been issued.

Based on interview with KUD members, i.e.  
- Yuhono (Kusuma Bakti A Farmers Group)

**Compliance status: :**

Yes  No

NCR No:-  
**RSPO01116,**  
**RSPO01117**



# RSPO Certification Assessment Report

## KUD Karya Mulya



Bumi Makmur , Nibung Sub district, Musi Rawas District, South Sumatera Province, Indonesia

Page 30 of 75

- Suyadi (Kusuma Bakti B Farmers Group)
- Jumirah (Sri Rejeki B Farmers Group)
- Yasin Anshori (Tunas Baru Farmers Group)

The members have already aware of environmental impacts driven by plantation operation. They have also demonstrated several impact mitigation measures, such as riparian protection, reduction of chemical weeding, and alternative fertilizer by using EFB mulching.

**Criterion 5.2: The status of rare, threatened or endangered species and other High Conservation Value habitats, if any, that exist in the plantation or that could be affected by plantation or mill management, shall be identified and operations managed to best ensure that they are maintained and/or enhanced.**

### Findings:

The KUD has already established HCV assessment report, i.e. Laporan Penilaian NKT di Areal Usaha Perkebunan Sawit Petani KUD Karya Mulya January 2017. The report and assessment is done by Perkumpulan Lingkar Hijau Palembang, with participation from group manager and its members.

The identified HCV values are:

- HCV 4.1: Keruh Riparian Zone
- HCV 4.1: Peat land
- HCV 6: Public Cemetary at Dusun 4 Sido Makmur

The assessment based on the operational intensity has already considered landscape approach, for example HCV 6 (cemetary) is located at the KUD boundary. The assessment had also included consultation process, evidenced by Daftar Hadir Pertemuan KUD Karya Mulya dated 23 January 2017 regarding Identifikasi Dampak Sosial dan NKT Perkebunan Sawit Petani KUD Karya Mulya attended by 21 participants. The flora and fauna data is stipulated on the HCV report. Based on Struktur Group Manager KUD Karya Mulya the person in charge for HCV management are Mr. Valentino and Mr. Sutini (unit pengelola NKT).

***In this case HCV area located outside the plantation of KUD member which involved in RSPO certification. Otherwise HCV management under KUD responsibilities.***

Based on HCV report, there is no RTE species identified within the KUD area. The identified HCV values are only peat land, cemetary, and riparian zone. The KUD has develop management and monitoring plan for those HCV values which stipulated on Chapter V and VI of HCV report. Based on field verification to HCV sites, i.e. peat land, cemetary, and river it was evidenced that:

- There is no signage in place indicating HCV status of the area and protection measures needed.
- There is no HCV area boundary marking as stated on the HCV area protection plan.

It raised non conformity **RSPO01118 (5.2.2)**

Based on document verification, there is policy regarding disciplinary measures in accordance with company rules and national law if any individual working for the company is found to capture, harm, collect or kill RTE species. This policy is stated on Decree No: 018/SK.RSPO/KUD-KM/V/2017 Prohibition and Sanctions on the Catching and Hunting and Destruction of Wildlife Habitats dated 31 May 2017. In the event of member conduct any prohibited activities mentioned thereof, the KUD will issue 2 stages of warning letter, and if after 2 warnings have been given the member still violate the rule, he/she will be expelled from membership. The programme to regularly educate the workforce about the status of RTE species and HCV are stipulated on Matrix Program Perbaikan Berkelanjutan Grup Manager 2017, which consist of all

### Compliance status :

Yes  No

NCR No: **RSPO01118**  
**RSPO01119**

# RSPO Certification Assessment Report

## KUD Karya Mulya

Bumi Makmur , Nibung Sub district, Musi Rawas District, South Sumatera Province,  
Indonesia

trainings for plantation management, including dissemination of RSPO, HCV, and SOP scheduled on 30 January – 1 February 2017.

There are evidences of training implementation, i.e.:

- Meeting Attendance List KUD Karya Mulya regarding RSPO & SOP KUD Karya Mulya Socialisation on 30 January 2017 attended by 24 participants. Minutes on RSPO Socialisation at Blok C no; 01/KUD-KM/II/2017 on 30 January 2017.
- Meeting Attendance List KUD Karya Mulya regarding RSPO & SOP KUD Karya Mulya Socialisation on 1 February 2017 attended by 21 participants. Minutes on RSPO Socialisation at Blok C no; 03/KUD-KM/II/2017 on 1 February 2017.
- Meeting Attendance List KUD Karya Mulya regarding Training on RSPO P&C and HCV on 28 January 2017 attended by 31 participants.
- Meeting Attendance List KUD Karya Mulya regarding Socialisation on RSPO and SOP KUD on 31 January 2017 attended by 24 participants.
- Minutes on RSPO Socialisation at Blok B no; 02/KUD-KM/I/2017 on 31 January 2017.

Those trainings have included HCV awareness and means to protect them. The training is scheduled to be conducted annually inline with KUD membership meeting (RAT).

Based on interview with Mr. Valentino the regular monitoring for HCV areas is conducted once a week, for three categories of HCV, i.e. peat land, riparian zone, and cemetery. The activities are:

- Monitoring on peatland is conducted through water level measurement on peat drain. However, there is no evidence of its implementation (**refer to NCR RSPO01111**).
- Monitoring on riparian zone is conducted by patrol to riparian zone to make sure there is no chemical weeding conducted within 3 palms perimeter from river bank. And to make sure that fronds from pruning activity are not thrown away into the river.
- Monitoring on cemetery is conducted by visiting it and make sure that it is well preserved, especially to make sure it is clean from domestic waste.

The monitoring reporting scheme is done through verbal communication from HCV officer to MR (Mr. Suyono). Thus, there is no evidence of HCV monitoring report. Moreover the regular HCV monitoring activity has not conducted according to HCV Monitoring Indicator on HCV report document. It raised non conformity **RSPO01119 (5.2.4)**

There is no HCV set-asides with existing rights of local communities. The surrounding area are mostly oil palm and rubber plantation. Based on the HCV document the northern border is Tebing Tinggi Village, south and west is PT Lonsum Sei Kepayang, and eastern border is Bumi Makmur Village.

Based on interview with KUD members, i.e.

- Yuhono (Kusuma Bakti A Farmers Group)
- Suyadi (Kusuma Bakti B Farmers Group)
- Jumirah (Sri Rejeki B Farmers Group)
- Yasin Anshori (Tunas Baru Farmers Group)

They have already aware about HCV values and means to protect them. They have also aware of RTE species, which is to date has never been sighted in the area. The members have already aware that hunting and torturing RTE species is prohibited.

**Criterion 5.3: Waste is reduced, recycled, re-used and disposed of in an environmentally and socially responsible manner**

# RSPO Certification Assessment Report

## KUD Karya Mulya



Bumi Makmur , Nibung Sub district, Musi Rawas District, South Sumatera Province,  
Indonesia

Page 32 of 75

### Findings:

Based on document verification on Rencana Pengurangan dan Pencegahan Polusi KUD Karya Mulya, there is a list of identified waste sources on Identifikasi Limbah dan Sumber-Sumber Polusi KUD Karya Mulya .There are 18 waste sources identified, including domestic (organic and an-organic) and hazardous (scheduled) waste. There is also special polluting agent identification against water, i.e. Tabel Identifikasi Sumber Utama Pencemaran Air di Wilayah Perkebunan Kelapa Sawit KUD Karya Mulya dated 30 January 2017, such as feces, bacteria, pesticide, gasoline, detergent, fertilizer.

There is an evidence of training regarding waste management, i.e. Daftar Hadir Pertemuan regarding Pelatihan Pengelolaan Sampah dan Limbah on 30 January 2017 attended by 12 participants from KUD officers. The participants are those of farmer groups' head which shared the knowledge to their members. The next training is planned to be conducted next year according to member meeting (RAT). To prevent pollution from hazardous waste, KUD has developed SOP Pengelolaan Wadah Bekas Kimia (no: 007/SOP/KUD-KM/IX/2016 on 22 September 2016). It is stated there that empty chemical container shall be delivered to warehouse and be reported to KUD.

KUD has established a mechanism to collect and dispose hazardous waste. All chemicals and their containers are handed over to KUD office warehouse where there is a person in charge i.e. Mr. Febri (Unit GAP) who monitors the incoming waste materials to warehouse. The record keeping is documented, evidenced by Buku Catatan Penerimaan Bekas Pestisida/Herbisida KUD Karya Mulya. The incoming record started from 15 Nov 2016 until 30 April 2017 which are coming from every group members.

KUD has already established cooperation with PT PP Lonsum that when the warehouse is full, the container can be delivered to Lonsum warehouse. This is evidenced through formal letter communication between them, i.e:

- Surat Mohon kerjasama pengelolaan Limbah B3 form KUD no: 05/KUD-KM/XII/2016 on 20 Dec 2016
- Responded by letter no: 002/DMR-KUD/KY/III/2017 on 2 March 2017.

In the letter it is stated that the hazardous waste will be delivered to Lonsum when the storage is full. However there is no definition regarding the volume/time limit of waste to be delivered to Lonsum.

Domestic waste are collected by each family in their respective houses. Based on interview with Mr. Suyadi (K3 dan B3) there is an outside party that regularly collects domestic an-organic waste to be recycled. This practice has already make members not to burn their domestic waste. The scheduled waste production and storage record is stipulated on Buku Catatan Penerimaan Bekas Pestisida/Herbisida KUD Karya Mulya. The incoming record started from 15 Nov 2016 until 30 April 2017 which are coming from every group members. Based on field visit to hazardous waste storage there is waste stock since November 2016. However SOP Used Chemical Container Handling (no: 007/SOP/KUD-KM/IX/2016 dated 22 September 2016) has not state time/volume limit for waste to be sent to PT PP. Lonsum storage. However it raised non conformity to this condition. **NCR RSPO01120 (5.3.2)**

Based on the matrix of Rencana Pengolahan dan Pembuangan Limbah KUD Karya Mulya there is already plan to reduce waste and pollution by, e.g.;

- Reducing garbage burning by issuing decision on fire prohibition and asking for nearby company for waste delivery to its warehouse
- Integrated waste management, through garbage bin (organic/an-organic), hazardous waste warehouse development, to acquire legal warehouse per-

### Compliance status :

Yes  No

**NCR No : RSPO01120**

# RSPO Certification Assessment Report

## KUD Karya Mulya



Bumi Makmur , Nibung Sub district, Musi Rawas District, South Sumatera Province, Indonesia

Page 33 of 75

<p>mit,</p> <ul style="list-style-type: none"> <li>- Dissemination and awareness</li> </ul> <p>Several points of those plans have already implemented, while several others still in the process. The progress will be further verified during next audit.</p> <p>Based on interview with KUD members, i.e.</p> <ul style="list-style-type: none"> <li>- Yuhono (Kusuma Bakti A Farmers Group)</li> <li>- Suyadi (Kusuma Bakti B Farmers Group)</li> <li>- Jumirah (Sri Rejeki B Farmers Group)</li> <li>- Yasin Anshori (Tunas Baru Farmers Group)</li> </ul> <p>They have already aware regarding waste handling procedure especially related to production activity.</p> <p>There is an evidence of training regarding waste management, i.e. Daftar Hadir Pertemuan regarding Pelatihan Pengelolaan Sampah dan Limbah on 30 January 2017 attended by 12 participants from KUD officers. The participants are those of farmers group head only. The next training is planned to be conducted next year according to member meeting (RAT). Evidence on training regarding waste management to all members need to be verified in the next audit.</p> <p>The plan to reduce waste is already implemented by members, e.g. to reduce chemical fertiliser members can choose to use EFB mulching. To reduce chemical pesticide usage, members usually conduct manual weeding prior to chemical application to reduce the dosage, and to manage domestic waste there is already third party conducting waste collection.</p>	
--	--

**Criterion 5.4: Efficiency of fossil fuel use and the use of renewable energy is optimised.**

<p><b>Findings:</b></p> <p><b>Group Manager</b></p> <p>Based on Rencana Peningkatan dan Pemantauan Efisiensi Penggunaan Bahan Bakar Fosil, stated that for the time being KUD does not have the ability to use renewable energy sources, thus planning of such approach could not be established.</p> <p>However the KUD has planned to reduce fossil fuel usage through office work and transportation efficiency, such as;</p> <ul style="list-style-type: none"> <li>- To reduce diesel usage for Gen-set</li> <li>- To reduce electricity usage from computers</li> <li>- To reduce electricity usage from lamps and other electronics</li> <li>- To reduce natural gas usage form cooking activity.</li> <li>- To use motorbike when necessary</li> </ul> <p>The abovementioned activities are to be monitored daily, while efficiency monitoring conducted monthly through diesel bill. Sighted the diesel bill for electricity usage on February and April 2017 as much as Rp 350.000,-. The bill uses fixed price.</p> <p>Based on the scale and intensity of members operational activity, those measures mentioned in the plan are mostly irrelevant with members activity. This is due to members are field working farmers with most of their time spent in household activities.</p>	<p><b>Compliance status: :</b>  <input checked="" type="checkbox"/> Yes <input type="checkbox"/> No</p> <p>NCR No: -</p>
---	--

**Criterion 5.5: Use of fire for preparing land for replanting is avoided except in specific situations, as identified in the ASEAN guidelines or other regional best practice.**

<p><b>Findings:</b></p> <p>KUD Karya Mulya has a policy zero burning presented in policy related prohibited burning for land preparation, No._015/SK/KUD-KM/IX/2016 issued date on September 22, 2016.</p> <p>During certification audit, no replanting activity at area's the organization</p>	<p><b>Compliance status: :</b>  <input checked="" type="checkbox"/> Yes <input type="checkbox"/> No</p> <p>NCR No: -</p>
---	--

# RSPO Certification Assessment Report

## KUD Karya Mulya



Bumi Makmur , Nibung Sub district, Musi Rawas District, South Sumatera Province, Indonesia

**Criterion 5.6: Plans to reduce pollution and emissions, including greenhouse gases, are developed, implemented and monitored.**

**Findings:**

An assessment of all polluting activities shall be conducted by KUD. This is evidenced by document of Table of GHG Emission Source Identification in KUD Karya Mulya Oil Palm Plantation dated 30 January 2017, which identifies all sources of GHG emission, which are:

Plantation

- Pesticide
- Fertilizer

Transportation

- FFB Transport truck (diesel)
- Plantation motorbike (gasoline)

Office

- Administration (computer)
- Kitchen (gas)
- Office (lamps)

Mitigation measures are implemented through e.g. reducing chemical usage, interated pest management.

Corrective actions are conducted through:

- Efficient use of lamps
- Reducing gen-set usage
- Rehabilitation on riparian zone
- Planting at office area

Since this is independent smallholder, there is no reporting tool implemented..

**Compliance status: :**

Yes  No

NCR No: -

**Criterion 6.1: Aspects of plantation and mill management including replanting that have social impacts are identified in a participatory way, and plans to mitigate the negative impacts and promote the positive ones are made, implemented and monitored, to demonstrate continuous improvement.**

**Findings:**

It's available Report of Social Impact Analysis in KUD Karya Mulya, drafted by Setara. Scope of Social Impact Analysis:

Farmers understand the positive impact of palm estate are to increase economy of community, provide job vacancy, Institutional strengthening, harmonize relationship between best partcice knowledge. Mean while the negative impact is causing road damage. To overcome road damage, farmers will do mutual cooperation to repair the road.

KUD Karya Mulya has identification records the impact of plantation operational activities to the surrounding community organized January –February 2017 , as follows:

The positive impacts are as follows:

- 1) Increasing community income
- 2) Employment opportunities for people in Bumi Makmur villages
- 3) Strengthen cooperatives as institutional in carrying out its functions in serving the needs of members in particular and society in general
- 4) Creating a good cooperative relationship between the farmers and farmers groups and cooperatives (KUD) also KUD with a partner or other stakeholder.
- 5) Increase knowledge about the cultivation of palm oil as well as increase the professionalism of human resources through training for farmers.

The negative impact that have been identified is the possibility of jealousy and social gaps arising among the farmers in the group and those not in the group.

Interviews with farmers, they understand the positive and negative impacts of

**Compliance status: :**

Yes  No

NCR No: -



# RSPO Certification Assessment Report

## KUD Karya Mulya



Bumi Makmur , Nibung Sub district, Musi Rawas District, South Sumatera Province,  
Indonesia

the plantation. Cooperative members know and with simply sentences explained the impact knowledge around palm oil cultivation.

**Criterion 6.2: There are open and transparent methods for communication and consultation between growers and/or millers, local communities and other affected or interested parties.**

SOP Communication and Consultation with other Parties. 008 / SOP / KUD-KM / IX / 2016 dated September 22, 2016, explaining that: In the process of communication and consultation with stakeholders, government or other related parties, which are formal meetings or visits, there are several stages to be run by KUD and other parties.

KUD Karya Mulya has communications and consulting officer is Mrs.Fransiska Yuliariani set 23 January 2017 in accordance with Decree No 017. /SK.RSPO/KUD-KM/I/2017.

Interviews with members of the Cooperative, they have understood the procedure which been developed by group managers.

The list of stakeholders includes educational institutions, financial institutions, suppliers, contractors, companies (Mill), NGOs etc..

Record communication as example : Letter No. 060/01 / PON / NB / 2016 november 2016 regarding the request for funding support for the soccer and volleyball activities of Nibung Sub-district and response from the cooperative by providing Rp 500,000 on November 24, 2016 for social sports fund.

**Compliance status :**

Yes  No

NCR No: -

**Criterion 6.3: There is a mutually agreed and documented system for dealing with complaints and grievances, which is implemented and accepted by all parties.**

**Findings:**

There is evidence that group managers have socialized the grievance procedures as well as the protection of the reporting identity (anonymity) to all members of the farmers 'and workers' groups.

The results of interviews with the Chairman of farmer groups, they have understood and understood the procedure of conflict resolution and protection of the reporting identity

Interviews with members of the Cooperative, they understand the grievance mechanism.

SOP Procedure Communication and Consultation with other Parties. 008 / SOP / KUD-KM / IX / 2016 dated September 22, 2016, explaining that: In the process of communication and consultation with stakeholders, government or other related parties, which are formal meetings or visits, there are several stages to be run by KUD and other parties.

KUD also has Standard Operating Procedure of Grievance Complaint of KUD Member No: 006 / KUD-KM / IX / 2016, dated 22 September 2016, which contains complaint process of KUD members, there are several steps that must be run for the members :

1. Members may submit a complaint to the Chairman of the Group or directly to the Head of the Garden Unit or an employee appointed by the KUD management, in oral or written form.
2. If the complaint is through the Chairman of the Group, the Chairman of the Group shall submit to the KUD Administrator, then the officer appointed by the KUD management will record the complaint in the Member Recommendation Book.
3. If the complaint is important and needs to be kept confidential, the report will be recorded in an unpublished member's important grievance book. (containing

**Compliance status :**

Yes  No

NCR No: -

# RSPO Certification Assessment Report

## KUD Karya Mulya



Bumi Makmur , Nibung Sub district, Musi Rawas District, South Sumatera Province, Indonesia

Page 36 of 75

racial elements,, conflict triggers, domestic violence, sexual harassment, human rights violations, etc. are considered important)  
4. The identity of the complainant will be kept confidential . (Anonymity).

**Records of complaints:**

1. Supriyanto (regulatory body) 08/02/2017 suggestions on request for regular meetings, responses from cooperative management will carry out regular meetings per 3 months.
2. Sutrisno, (member) 15/04/2017, concerning complaints of road production improvements in Block 15 C D, response from the cooperative will be repair in the dry season (road grader).

**Criterion 6.4: Any negotiations concerning compensation for loss of legal or customary rights are dealt with through a documented system that enables indigenous peoples, local communities and other stakeholders to express their views through their own representative institutions.**

**Findings:**

KUD Karya Mulya has a legal right transfer SOP No. 005 / KUD-KM / IX / 2016 dated September 23, 2016.

- a. The status of land ownership and customary land (traditional rights) must be clearly legally and not conflicted.
- b. The transfer of legal rights / traditional rights is accompanied by evidence known by the Chairman of the Group, Village Head and witnesses ie landowners adjacent to the land concerned.
- c. The group leader reports to the KUD management regarding the delegation of rights that occurs, then the group leader must also collect copies of the corresponding letters and copy the identity of the new owner of the land.
- d. The transfer of legal rights and traditional rights is done without coercion from any party.
- e. The amount of compensation for the transfer of legal or customary rights and the distribution process

**Compliance status :**

Yes  No

NCR No: -

**Criterion 6.5: Pay and conditions for employees and for employees of contractors always meet at least legal or industry minimum standards and are sufficient to provide decent living wages.**

**Findings:**

There is a list of wage workers of farmer groups Mulya A, B, Kusuma Bhakti B Decree letter from Governor of South Sumatera No. 669 / KPTS / Disnakertrans / 2016 on the Minimum Wage of South Sumatera 2017 Rp. 2,388,000.

Example of workers payment on April 2017: Purwanto, (cooperative staff) IDR 1,300,000. Danang (Harvester -Gading Mulya B Group Farmer) IDR 489,000

**Example Agreement**

1. No. 01 / SPK / KUD-KM / I / 2017 between KUD karya Mulya with Purwanto (KUD staff) is valid 01 January -31 December 2017 wages Rp. 1.300.000, - / month, 3.5 hours a day for 24 working days. Article 4 for female workers on menstrual leave 1 day a month, to give birth get 2 months leave without pay cut.
2. Agreement between Group Leader (Bumi Asih) with Ahmad Hariyanto (Harvester and Upkeep) as worker representatives, valid 01 January - 31 December 2017. Wages adjusted to working activity such Harvesting IDR 2,000/FFB, Pruning 1,000,000/plot, Spraying 400,000/plot

**Compliance status :**

Yes  No

NCR :



# RSPO Certification Assessment Report

## KUD Karya Mulya



Bumi Makmur , Nibung Sub district, Musi Rawas District, South Sumatera Province, Indonesia

Page 37 of 75

Cooperatives and Farmer Groups have records of payment of workers' wages for the period of May 2017. There is agreement between the Cooperative and the worker eg a.n Tabrani and Eka. Agreement between farmer group and plantation worker (harvest, maintenance etc) in clause of agreement there is explanation related to wage payment, job type, work location etc.

Cooperative and members do not hold facilities such as housing, water etc for the workers because the workers are local villagers (neighboring landowners)

Traditional markets are available to meet the needs of households located in the village of Bumi Makmur near the place of workers who are also local villagers.

**Criterion 6.6: The employer respects the right of all personnel to form and join trade unions of their choice and to bargain collectively. Where the right to freedom of association and collective bargaining are restricted under law, the employer facilitates parallel means of independent and free association and bargaining for all such personnel.**

**Findings:**

Result of interview with staff and committee of KUD Karya Mulya and document review Policy No. 003 / SK / KUD-KM / IX / 2016 About Human Rights Point 7. Decides that every member of KUD is prohibited from taking actions that violate human rights including the right to express opinions, association and political rights. However there is no such labour union in KUD.

**Compliance status: :**

Yes  No

NCR No: -

**Criterion 6.7: Children are not employed or exploited.**

**Findings:**

Policy to prohibit in employing child workers has been socialized to farmers on September 29, 2016, it was installed in wall of house of farmer group chief, so it can be known by members.

Farmers can show workers profile in each farmers group, which is consist of name, place of birth, date of birth, age, gender, religion, and regional origin. Identity Card (KTP) of workers have been available in each farmer group.

Based on data of workers profile on February 2017, no workers, under the age of 18 years old.

**Compliance status: :**

Yes  No

NCR No: -

**Criterion 6.8: Any form of discrimination based on race, caste, national origin, religion, disability, gender, sexual orientation, union membership, political affiliation, or age, is prohibited.**

**Findings:**

Group manager has Policy No. 003 / SK / KUD-KM / IX / 2016 About Human Rights. Group Manager decides that every member of KUD is prohibited from taking actions that violate human rights, including:

1. Right to live, survive and improve the standard of living.
2. Right to have family and reproduce according to regulation.
3. Right not to be tortured, enslaved and humiliated.
4. Right to work and obtain decent salary.
5. Right to get equal treatment before the law, without discrimination.
6. Right to have religion and pray.
7. Right to express opinion, constitute union, and politics.
8. Rights of capacity building and education.
9. Right of security and to get protection from threats.
10. Right to reproduce (women)
11. Other rights regulated on Human Rights Act.

**Compliance status: :**

Yes  No

NCR No: -

# RSPO Certification Assessment Report

## KUD Karya Mulya



Bumi Makmur , Nibung Sub district, Musi Rawas District, South Sumatera Province, Indonesia

Policy No. 003 / SK / KUD-KM / IX / 2016 About Human Rights Deciding that every member of KUD is prohibited from taking actions that violate human rights, point 5 and 8: The right to equal treatment before the law, without discrimination. And the right to self-development and education.

KUD and group farmer do not discriminate in workers recruitment, however in fact the workers are mostly from local villagers and who work in the plantation mostly are men, except in the KUD office there are several female workers.

**Criterion 6.9: There is no harassment or abuse in the work place, and reproductive rights are protected.**

**Findings:**

Policy No. 003 / SK / KUD-KM / IX / 2016 About HAM Decides that every member of KUD is prohibited from taking actions that violate human rights point 3 The right not to be tortured, enslaved and abused.

At point 2 and 10 : The right to marry and continue the descent in accordance with applicable law and the right to reproductive women.

Information from female staff working in the KUD that KUD does not forbid the women to get pregnant and give permission not to go to work at the first and second day if they have menstruation.

**Compliance status: :**

Yes  No

NCR No: -

**Criterion 6.10: Growers and mills deal fairly and transparently with smallholders and other local businesses.**

**Findings:**

KUD Karya Mulya has procedure related price of FFB presented in Procedure for FFB pricing, no. doc. 012/SOP/KUD-KM/IX/2016, Issued on date September 22, 2016. In the procedure is mentioned that agricultural agency set price of FFB twice for every month. KUD Karya Mulya receive price of FFB from POM and Group manager will inform to group member on white board at office's organization.

During interview with group member, they have been known and understood FFB pricing accordance the procedure.

There is FFB price that was still effective and FFB price that was effective previously. It was well documented. The current price of FFB (May, 2017) is IDR 1.566/kg and FFB Price is IDR 1,613/ kg (April, 2017)

Group member has contractual for FFB transport with third party behalf on group member. During document verification, some of condition does not compliance such as :

- There is found members have not been received information on the contents of FFB transport contract agreement with third parties
- There is no evidence that members have received a copy of the FFB contracting agreement from Group manager.

This condition, auditor raise as non conformity. **NCR RSPO01121 (6.10.3)**

Payment of FFB from POM to KUD Karya Mulyai was transferred through Bank. Payment from KUD Karya Karya to members was paid by cash accordance FFB production.

**Compliance status: :**

Yes  No

**NCR No: RSPO01121**

**Criterion 6.11: Growers and millers contribute to local sustainable development wherever appropriate.**

# RSPO Certification Assessment Report

## KUD Karya Mulya



Bumi Makmur , Nibung Sub district, Musi Rawas District, South Sumatera Province,  
Indonesia

<p><b>Findings:</b></p> <p>KUD Karya Mulya has participated on giving contribution to local development, for example based on consultation:</p> <p>-Financial aid amount of IDR 1,000,000 for the construction of the building dated August 25, 2016 in accordance with Letter No.422 / 348 / SD-056 / NB / 2016 from SDN Bumi Makmur dated August 18, 2016 to the Chairman of KUD Karya Mulya regarding the application for funding assistance for the construction of the scholl sports building</p> <p>-Financial aid amonut of IDR. 500,000 dated April 22, 2016 for sports equipment accordance with Letter No. 02 / KR-DSSH / IV / 2016 from karang taruna Dusun Suko Harjo dated April 4, 2016 regarding the request for financial aid for sports equipment.Kind of contribution in local development no need to be consulted to community, since the farmers is local people as well.</p>	<p><b>Compliance status: :</b>  <input checked="" type="checkbox"/> Yes <input type="checkbox"/> No</p> <p>NCR No: -</p>
<p><b>Criterion 6.12: No forms of forced or trafficked labour are used.</b></p>	
<p><b>Findings:</b></p> <p>Farmers understand that it's not allowed to employ illegal trafficking workers or forced workers. All workers are local people and family of farmers the land owner.</p> <p>KUD Karya Mulya has policy on labour, drafted on January 20, 2016, those are: actively involved in supervising and avoiding in employing illegal trafficking works or forced workers.</p> <p>Result of interview with ICS manager and members, it was known that no trafficking workers and no foreign workers in estate and independent farmer. The group managers have socialized the policy of not conducting the forced labor of all members of farmer groups and workers.</p> <p>Policies related to the prohibition of forced labor and trafficking of persons in accordance with SK no. 007 / SK / KUD-KM / IX / 2016 dated September 22, 2016; point 2 is prohibited from performing forced labor acts against the workforce or any other person in any situation. point 3 is prohibited from taking any person / labor trade action in any form</p>	<p><b>Compliance status: :</b>  <input checked="" type="checkbox"/> Yes <input type="checkbox"/> No</p> <p>NCR No: -</p>
<p><b>Criterion 6.13: Growers and millers respect human rights.</b></p>	
<p><b>Findings:</b></p> <p>There is Policy No. 003/SK/KUD-KM/IX/2016 related Human Rights. It stated there that KUD prohibits any action which violates human rights, i.e.:</p> <ol style="list-style-type: none"> <li>12. Right to live, survive and improve the standard of living.</li> <li>13. Right to have family and reproduce according to regulation.</li> <li>14. Right not to be tortured, enslaved and humiliated.</li> <li>15. Right to work and obtain decent salary.</li> <li>16. Right to get equal treatment before the law, without discrimination.</li> <li>17. Right to have religion and pray.</li> <li>18. Right to express opinion, constitute union, and politics.</li> <li>19. Rights of capacity building and education.</li> <li>20. Right of security and to get protection from threats.</li> <li>21. Right to reproduce (women)</li> <li>22. Other rights regulated on Human Rights Act.</li> </ol> <p>The dissemination regarding human right policy has already conducted, evidenced by:</p> <ul style="list-style-type: none"> <li>- Socialization RSPO &amp; SOP KUD Karya Mulya on 1 February 2017 attended by 21 participants, at Block C No. 03/KUD-KM/II/2017 on 1 February 2017.</li> <li>- KUD Karya Mulya regarding Sosialisasi Terkait RSPO dan SOP KUD on 31 January 2017 attended by 24 participants.</li> </ul> <p>Notulensi Sosialisasi Terkait RSPO di Blok B no; 02/KUD-KM/II/2017 on 31</p>	<p><b>Compliance status: :</b>  <input checked="" type="checkbox"/> Yes <input type="checkbox"/> No</p> <p>NCR No: -</p>

# RSPO Certification Assessment Report

## KUD Karya Mulya



Bumi Makmur , Nibung Sub district, Musi Rawas District, South Sumatera Province, Indonesia

Page 40 of 75

<p>January 2017.</p> <ul style="list-style-type: none"> <li>- Daftar Hadir Pertemuan KUD Karya Mulya regarding Sosialisasi RSPO &amp; SOP KUD Karya Mulya on 30 January 2017 attended by 24 participants.</li> <li>- Notulensi Sosialisasi Terkait RSPO di Blok C no; 01/KUD-KM/II/2017 on 30 January 2017.</li> </ul> <p>Those activities have included human rights policy dissemination.</p> <p>Based on interview with KUD members, i.e.</p> <ul style="list-style-type: none"> <li>- Yuhono (Kusuma Bakti A Farmers Group)</li> <li>- Suyadi (Kusuma Bakti B Farmers Group)</li> <li>- Jumirah (Sri Rejeki B Farmers Group)</li> <li>- Yasin Anshori (Tunas Baru Farmers Group)</li> </ul> <p>They have already aware regarding KUD's human rights policy. The awareness is gained through dissemination meeting and daily discussion with other farmers.</p>	
--	--

**Criterion 7.1: A comprehensive and participatory independent social and environmental impact assessment is undertaken prior to establishing new plantings or operations, or expanding existing ones, and the results incorporated into planning, management and operations.**

**Findings:**

This principle is not applicable because there is no new planting or activities outside of the existing area. There are planted trees after year 2005 because it is replating plant.

**Compliance status:**  
**Not Applicable**

NCR No: -

**Criterion 7.2: Soil surveys and topographic information are used for site planning in the establishment of new plantings, and the results are incorporated into plans and operations.**

**Findings:**

This principle is not applicable because there is no new planting or activities outside of the existing area.

**Compliance status:**  
**Not Applicable**

NCR No: -

**Criterion 7.3: New plantings since November 2005, have not replaced primary forest or any area required to maintain or enhance one or more High Conservation Values.**

**Findings:**

This principle is not applicable because there is no new planting or activities outside of the existing area. There are planted trees after year 2005 because it is replating plant.

**Compliance status:**  
**Not Applicable**

NCR No: -

**Criterion 7.4: Extensive planting on steep terrain, and/or on marginal and fragile soils, is avoided.**

**Findings:**

This principle is not applicable because there is no new planting or activities outside of the existing area. There are planted trees after year 2005 because it is replating plant.

**Compliance status:**  
**Not Applicable**

NCR No: -

**Criterion 7.5: No new plantings are established on local peoples' land without their free, prior and informed consent, dealt with through a documented system that enables indigenous peoples, local communities and other stakeholders to express their views through their own representative institutions.**

**Findings:**

This principle is not applicable because there is no new planting or activities

**Compliance status:**  
**Not Applicable**

# RSPO Certification Assessment Report

## KUD Karya Mulya

Bumi Makmur , Nibung Sub district, Musi Rawas District, South Sumatera Province,  
Indonesia



Page 41 of 75

outside of the existing area.	NCR No: -
<b>Criterion 7.6: Local people are compensated for any agreed land acquisitions and relinquishment of rights, subject to their free, prior and informed consent and negotiated agreement</b>	
<p><b>Findings:</b></p> <p>This principle is not applicable because there is no new planting or activities outside of the existing area.</p>	<p><b>Compliance status:</b> <b>Not Applicable</b></p> <p>NCR No: -</p>
<b>Criterion 7.7: Use of fire in the preparation of new plantings is avoided other than in specific situations, as identified in the ASEAN guidelines or other regional best practice.</b>	
<p><b>Findings:</b></p> <p>This principle is not applicable because there is no new planting or burning activities outside of the existing area.</p>	<p><b>Compliance status:</b> <b>Not Applicable</b></p> <p>NCR No: -</p>
<b>Criterion 7.8: New plantation developments are designed to minimise net greenhouse gas emissions.</b>	
<p><b>Findings:</b></p> <p>This principle is not applicable because there is no new planting and potential greenhouse gas emissions including GHG calculations.</p>	<p><b>Compliance status:</b> <b>Not Applicable</b></p> <p>NCR No: -</p>
<b>Criterion 8.1: Growers and millers regularly monitor and review their activities and develop and implement action plans that allow demonstrable continuous improvement in key operations.</b>	
<p><b>Findings:</b></p> <p>Member of group has been give input to group manager related continous improvement such as road maintenance and drainage. The group manager and ICS has been conduct internal audit to check implementation related requirement of RSPO principle.</p> <p>There is no evidence of a continuous improvement plan related to the environmental impact of oil palm plantations, which must be reviewed annually. This is because the KUD has not obtained the environmental permit. This condition raised as Non-conformity <b>(NCR RSPO01122 (8.1.1))</b></p>	<p><b>Compliance status: :</b> <input checked="" type="checkbox"/> Yes <input type="checkbox"/> No</p> <p>NCR No: <b>RSPO01122</b></p>

### 3.2 Identified Non-conformances, Corrective Actions Taken and Auditors Conclusions

Total 19 nonconformances identified during the main certification assessment. These consisted of 11 major non-conformities and 8 minor non-conformities. For the major non-conformances, the company has taken the necessary corrective action to close these non-conformances within 60 days of completion of the assessment, and this was verified by the audit team through an on-site verification audit conducted on May 29, - June 02, 2017 as well as checks of documents submitted by the company. For the minor non-conformances, the company has taken corrective action against these as well, and for those, which could not verified as closed through document checks, the closure of these minor non-conformities will be assessed during the next surveillance audit. A summary of all identified non-conformances, corrective actions taken and auditor conclusions is as below:

### 3.2.1. Major non-conformities

It recommended by the lead auditor to award the system of the company with a certificate pursuant to the above-mentioned RSPO standards after eliminating the non-conformities rated as "major".

NCR No.	Indicator	Evidence Observed	Deadline for implementation (Date)	Correction/Corrective Action taken/	Auditor Conclusion
RSPO011 04	E3.1.3	Not all members have been socialized that group managers and internal auditors have no interest at the time of internal audit	26-07-2017	<p><b>Correction :</b> The Group Manager should do so to all members through the group leader</p> <p><b>Corrective Action:</b> Socialization has been done so that farmers as members can understand the function of internal auditors at the time of internal audit activities conducted.</p> <p><b>Evidence :</b> Group manager conducted Socialization to all members that the internal auditor has no interest in conducting the audit on June 02, 2017</p>	Closed
RSPO011 05	2.1.1	There is no environmental permit document established yet by local authority, this is a non-compliance against Ministry of Environment Regulation No 13 year 2010.	01-08-2017	<p><b>Correction :</b> The KUD Management conducts SPPL issuance as per government's procedure.</p> <p><b>Corrective Action:</b> Ensure SPPL documents are always available and updated for all farmers with coordination to relevant agencies in North Musi Rawas District.</p> <p><b>Evidence :</b> There is formal letter No: 660/726//DLHP/I/2017 dated 4 Aug 2017 from Environmental Authority of North Musi Rawas District stating that the SPPL is under process of issuance.</p>	Closed
RSPO011	4.1.1	There are some members, who have not	01-08-2017	<b>Correction :</b>	Closed

# RSPO Certification Assessment Report

## KUD Karya Mulya

Bumi Makmur , Nibung Sub district, Musi Rawas District, South Sumatera Province,  
Indonesia



Page 43 of 75

07		participated in the socialization of the best practices of SOP.		<p>Group Manager has conducted socialization activities to all members.</p> <p><b>Corrective Action:</b> Ensure socialization of SOP on GAP conducted to member's continuously.</p> <p><b>Evidence :</b> Group Manager has conducted socialization activities to all members of the farmer group</p>	
RSPO011 10	4.3.1	The group manager not able to shown evidence of land maps and slope maps	01-08-2017	<p><b>Correction :</b> KUD, Group Manager and Lonsum has made land type maps and slope maps</p> <p><b>Corrective Action:</b> KUD dan Group Manager will using soil type charts and slope maps to comply with P &amp; C RSPO compliance and disseminated to all members</p> <p><b>Evidence :</b> The group manager has shown evidence of land maps and slope maps</p>	<b>Closed</b>
RSPO011 11	4.3.4	<ul style="list-style-type: none"> <li>• The group manager has a SOP of peat subsidy monitoring, but no water altitude is available and what mechanism if the water level does not meet the reference</li> <li>• No evidence of water level measurement in the peat area</li> <li>• At field verification, no water level measurement location (KT Gading Mulya A)</li> </ul>	06-09-2017	<p><b>Correction :</b> <b>Correction :</b> Group manager has revised SOP on monitoring of peat subsidency Group Manager has conducted implementation of SOP on monitoring of peat subsidency</p> <p><b>Corrective Action:</b> GM conducts socialization the SOP to members and ensure SOP implemented continuously</p> <p><b>Evidence :</b> Group Manager has submitted evi-</p>	<b>Closed</b>



# RSPO Certification Assessment Report

## KUD Karya Mulya

Bumi Makmur , Nibung Sub district, Musi Rawas District, South Sumatera Province,  
Indonesia



				dence of improvement such as : SOP monitoring of peat subsidency that has revised ;, record of measurement of water level on July and august 2017;; photograph of water level measurement pipe	
RSPO011 14	4.4.2	During field verification, there was no effort to maintain the buffer zone of Sungai Keruh (Kelompok Tani Sri Rejeki B)	31-07-2017	<p><b>Correction :</b> Farmers group of Sri Rezeki B has planted several trees such as pulai, mahogany, banyan tree and installed sign board to protected riparian zone at Keruh river</p> <p><b>Corrective Action:</b> GM conducted socialization for protection riparian zone to members</p> <p><b>Evidence :</b> Group Manager has submitted evidence of improvement such as : photograph of tree planting location ; photograph of signboard for protection riparian zone</p>	<b>Closed</b>
RSPO011 15	4.8.1	<p>- Not all members have P &amp; C RSPO training yet .</p> <p>-There is no proof that the workers have taken the necessary training</p>	12-10-2017	<p><b>Correction :</b> The Group Manager has conducted training about P&amp;C RSPO to members The Group manager has conducted a training on best practices such as Harvesting, fertilizing, weed control to workers</p> <p><b>Corrective Action:</b> The Group Manager will establish a monitoring program for RSPO P &amp; C implementation to all farmer groups and members. Ensure that workers has received appropriate training</p>	<b>Closed</b>

# RSPO Certification Assessment Report

## KUD Karya Mulya

Bumi Makmur , Nibung Sub district, Musi Rawas District, South Sumatera Province,  
Indonesia



Page 45 of 75

				<p><b>Evidence :</b> Group manager has submitted evidence of improvement such as; Attendance list of training, photo of training activities.</p>	
RSPO011 16	5.1.1	There is no evidence of environmental permit issued by the local government covering all farmers within the scope of certification	18-10-2017	<p><b>Correction :</b> The KUD Management conducts SPPL issuance as per government's procedure</p> <p><b>Corrective Action:</b> Ensure SPPL documents are always available and updated for all farmers with coordination to relevant agencies in North Musi Rawas District.</p> <p><b>Evidence :</b> There is formal letter no: 660/726//DLHP/I/2017 dated 4 Aug 2017 from Environmental Authority of North Musi Rawas District stating that the SPPL is under process of issuance</p>	Closed
RSPO011 18	5.2.2	Based on site visits to HCV sites, ie cemeteries, peatlands and rivers, it is known that: - No signposts indicate the status of the HCV area and its safeguards - There is no marking of the boundary of the area in the 3 KBKT. This is not in accordance with the plan for the protection of KBKT and SOP areas for Water and Water Resources Management (No: 025 / SOP / KUD-KM / X / 2016 dated October 3, 2016)	25-07-2017	<p><b>Correction :</b> Sign Board and its area status have been installed at graveyard, peat, and riparian zone.</p> <p><b>Corrective Action:</b> Ensure the consistent implementation of HCV area protection plan and SOP on Water and Water Source Management.</p> <p><b>Evidence :</b> There is documented evidence of sign-board installation and protection measures for HCVs, signed by Manager Representative.</p>	Closed

# RSPO Certification Assessment Report

## KUD Karya Mulya

Bumi Makmur , Nibung Sub district, Musi Rawas District, South Sumatera Province,  
Indonesia



Page 46 of 75

RSPO011 20	5.3.2	Based on the visit to the B3 waste warehouse, B3 waste stock has been found since November 2016. However, the SOP of the Used Chemical Container Management (no: 007 / SOP / KUD-KM / IX / 2016 dated September 22, 2016) has not set the deadline / volume of waste to be sent to PT PP's warehouse. Lonsum.	25-07-2017	<p><b>Correction :</b> To set-up agreement with PT Lonsum regarding waste handling cooperation.</p> <p><b>Corrective Action:</b> Ensure the agreement is in place between KUD and PT PP Lonsum regarding hazardous waste management along with its continuous implementation.</p> <p><b>Evidence :</b> There is documented evidence of SOP on Empty Chemical Container Handling (007/SOP/KUD-KM/IX/2016 rev.1 on 3 July 2017) where the maximum time for handing over to Lonsum is 6 months. The existing waste has been handled evidenced by Activity Report on hazardous Waste Hand-Over on 19 July 2017.</p>	Closed
RSPO011 22	8.1.1	There is no evidence of a continuous improvement plan related to the environmental impact of oil palm plantations, which must be reviewed annually. This is because the KUD has not obtained the environmental permit	08-10-2017	<p><b>Correction :</b> The KUD Management conducts SPPL issuance as per government's procedure.</p> <p><b>Corrective Action :</b> Ensure SPPL documents are always available and updated for all farmers with coordination to relevant agencies in North Musi Rawas District.</p> <p><b>Evidence :</b> There is formal letter no: 660/726//DLHP/I/2017 dated 4 Aug 2017 from Environmental Authority of North Musi Rawas District stating that</p>	Closed

# RSPO Certification Assessment Report

## KUD Karya Mulya

Bumi Makmur , Nibung Sub district, Musi Rawas District, South Sumatera Province,  
Indonesia



				the SPPL is under process of issuance.	
--	--	--	--	--	--

### 3.2.2. Minor non-conformities

It is recommended by the lead auditor to award the system of the company a certificate pursuant to the above-mentioned RSPO Independent small-holder standards. The non-conformities identified shall be audited again in line with the timeframe during the next surveillance audit

Indicator	NCR No.	Evidence Observed/ NCR	Deadline for implementation (Date)	Correction/Corrective Action taken/	Auditor Conclusion
RSPO01106	2.1.2	There is no evidence that the member has filled in the checklist / device list ie the monitoring of the implementation of KUD Karya Mulya member law provided by the group manager to ensure compliance with prevailing laws / regulations	27-07-2017	<p><b>Correction :</b> The Group Manager has requested members to complete the Implementation monitoring Sheet</p> <p><b>Corrective Action:</b> Group Manager make an appeal letter to all members to complete the Regulatory Review Implementation Sheet so that members know what to fulfill in the RSPO certification program.</p> <p><b>Evidence :</b> There is evidence that members have filled in a checklist / device that is a monitoring sheet of the implementation of the KUD Karya Mulya law law provided by the group manager to ensure compliance with the applicable law on 14 June 2017</p>	Closed
RSPO01108	4.1.2	There is no evidence that the group manager checks for the best practices of SOPs for members of the best practices.	05-09-2017	<p><b>Correction :</b> Group Manager has conducted checks and socialization on the application of the best cultivation practice SOP to the members</p>	Closed

# RSPO Certification Assessment Report

## KUD Karya Mulya

Bumi Makmur , Nibung Sub district, Musi Rawas District, South Sumatera Province,  
Indonesia



				<p><b>Corrective Action:</b> Ensure to check procedure implementation regularly</p> <p><b>Evidence :</b> Group Manager has conducted checks and socialization on the application of the best cultivation practice SOP to the members on June 15, 2017.</p>	
RSPO01109	4.2.3	Group Manager have not conduct leaf and soil sampling and analysis	Next audit	<p><b>Correction :</b> Group Manager which was facilitated by Lonsum, has developed a leaf and soil sampling also analysis plan in August 2017.</p> <p><b>Corrective Action:</b> Leaf and soil analysis results will be used by KUD to create sustainable palm oil plantation practices such as proper fertilization and damage to the environment and make monitoring plans.</p>	Open
RSPO01112	4.3.5	No regular assessment schedule of drainability / water absorption to the ground for the group and its implementation	05-09-2017	<p><b>Correction :</b> Group manager has created a routine schedule of drainability/ water absorption to the ground and implemented the schedule</p> <p><b>Corrective Action:</b> Ensure that schedule is impemented periodically</p> <p><b>Evidence :</b> Group manager submitted evidence of improvement such as a schedule of drainability/ water absorption to the ground ; record of water ab-</p>	Closed

# RSPO Certification Assessment Report

## KUD Karya Mulya

Bumi Makmur , Nibung Sub district, Musi Rawas District, South Sumatera Province,  
Indonesia



Page 49 of 75

				sorption on July and august 2017	
RSPO011 13	4.4.1	<ul style="list-style-type: none"> <li>No record of water management plan implementation in Keruh River.</li> <li>During field verification, There is No evidence that water management plan implemented in Keruh River (farmer Group Sri Rejeki B)</li> </ul>	<b>Next audit</b>	<p><b>Correction :</b> Group Manager has made documentation of the proof of spray boundary marking at the Keruh River border (20 meters from the edge of the river) as a form of water management activity</p> <p><b>Corrective Action:</b> Plan and realization of Water management will be monitored by group manager and all group leader continuously</p>	<b>Open</b>
RSPO011 17	5.1.2	There is no mitigation plan to reduce the environmental impact due to the absence of environmental permit.	<b>02-08-2017</b>	<p><b>Correction :</b> The mitigation plan will be established based on SPPL.</p> <p><b>Corrective Action:</b> The SPPL will become reference of mitigation measures and Group Manager will disseminate mitigation plan to all members and conduct monitoring on its implementation.</p> <p><b>Evidence :</b> There is formal letter no: 660/726//DLHP/I/2017 dated 4 Aug 2017 from Environmental Authority of North Musi Rawas District stating that the SPPL is under process of issuance.</p>	<b>Closed</b>
RSPO011 19	5.2.4	There is no evidence of HCV monitoring activity report. - Routine HCV monitoring activities have not been conducted in accordance with the Monitoring Indica-	<b>25-07-2017</b>	<p><b>Correction :</b> Group Manager create report on HCV monitoring activity and to implement monitoring based on HCV Monitoring Indicator.</p> <p><b>Corrective Action:</b></p>	<b>Closed</b>



# RSPO Certification Assessment Report

## KUD Karya Mulya

Bumi Makmur , Nibung Sub district, Musi Rawas District, South Sumatera Province,  
Indonesia



		tors of HCVA as set out in the Document of Results of HCV Assessment		<p>Group Manager establish the HCV management and monitoring plan as per HCV Monitoring Indicator and be conducted in regular basis.</p> <p><b>Evidence :</b> There is HCV Management &amp; Monitoring Plan which consists of Objective, Program, Achievement Indicator, Target, schedule and PIC dated 19 July 2017. The Plan has been conducted on 19 July 2017 evidenced by attendance list attended by 8 participants. evidence of continuous corrective action will be verified in the next audit.</p>	
RSPO011 21	6.10.3	<ul style="list-style-type: none"> <li>• Not all members have information regarding the contents of TBS transport contract agreement with third parties</li> <li>• No evidence of membership has been obtained yet a copy of the TBS contracting agreement.</li> </ul>	<b>Next audit</b>	<p><b>Correction :</b> Group Manager has disseminated to some members the contents of the contract agreement for transporting FFB and distributed copies of it.</p> <p><b>Corrective Action:</b> Ensure to all members through group leaders - contract copy has been received .</p>	<b>Open</b>

# RSPO Certification Assessment Report

## KUD Karya Mulya

Bumi Makmur , Nibung Sub district, Musi Rawas District, South Sumatera Province,  
Indonesia



### 3.3 Noteworthy Positive Components and Potential for Improvement

#### Positive Observation:

No.	Indicator	Positive Comments
1.	-	Group managers and members are very cooperative in the audit process

#### Potential for Improvement:

No.	Indicator	Potential for improvement
1.	4.8	Conducting data collection of members who have not received training or socialization related to the RSPO Principles and Criteria

### 3.4 Issues Raised by Stakeholders and Findings Pertaining to Issues

#### A) Issues Raised during Stakeholder Consultation Meeting

No.	Issues Raised	Management Response	Audit Verification
1	KUD managerial ability is very good. The Village Government has so far been helped by the realization of the village development program thanks to the assistance of KUD through donation of Rp 7, kg FFB. The funds are used for road building, social, religious, and public health programs. In general, KUD Karya Mulya is very worthy of award for RSPO certification. Many twigs during clearance of wasted land to the Keruh River body. So far the potential of	KUD has been trying to contribute positively to the people of Bumi Makmur village. Keruh river condition is now better with the establishment of river edge buffer zone. The potential of fish as a subsistence needs is also still in good condition..	Based on field verification it is known that Keruh river conditions are in a protected area, where there is an old grove on the banks of the river. There is also fishing activity by the people, this indicates the potential enough of fish .

# RSPO Certification Assessment Report

## KUD Karya Mulya

Bumi Makmur , Nibung Sub district, Musi Rawas District, South Sumatera Province,  
Indonesia



	<p>fish in the Keruh River is still good. We recommend that the company PP Lonsum more active to coaching to the KUD, especially ahead of re-planting activities.</p> <p>Hope for KUD is a contribution to the education program, where there is a local University (Universitas Terbuka) with 85 students.</p> <p>The village government has planned a clean water well development program.</p>		
2	<p>Hoped that KUD Mulya will diversify its business to not only in oil palm, such as rubber.</p>	<p>Currently ` rubber plantation development has not been done by KUD.</p>	<p>So far the development of shelter and rubber cultivationbusiness has not been done by KUD. Based on interviews with members, it is known that many people are turning rubbercommodities into palm oil because the market is more promising.</p>
3	<p>KUD does not yet have an environmental permit, so Semester reports has not yet been compiled. In 2016 KUD once proposed an environmental permit but has not been resumed since. Environmental monitoring of KUD by DLH has not been done because there is no environmental permit and routine report. It is expected that environmental permits will be</p>	<p>KUD does not create the Environment document because the KUD is still included in the scope of AMDAL at PT PP Lonsum Sei Kepayang.</p>	<p>KUD does not has environmental document as mandated in the national regulation. This is a finding of nonconformity in the audit.</p>

# RSPO Certification Assessment Report

## KUD Karya Mulya

Bumi Makmur , Nibung Sub district, Musi Rawas District, South Sumatera Province, Indonesia



	<p>managed by KUD. Required environmental documents a.n. KUD. KUDs need to apply for environmental permits, the scale (either UKL / UPL or SPPL) will be determined by the BLHD after going through the assessment process.</p> <p>After obtaining the appropriate environmental permit, the Hazardous waste temporary storage permit may be filed as the fulfillment of the obligation points in the environmental permit later.</p>		
	<p>Cooperative KUD Karya Mulya's data is complete. KUD Karya Mulya has been registered in . Musi Rawas Utara District, including the deed of cooperatives has also been renewed. KUD KM is recommended as a Partner of Lembaga Pengelola Dana Bergulir (revolving funds). In general at the sub-district of Nibung KUD Karya Mulya is the best.</p>	<p>The company will continue to improve the good and harmonious relationship with the community</p>	<p>Cooperative explanation is accepted,</p>

### B) Issues Raised during Stakeholder Interviews On-site

No.	Issues Raised	Audit Verification
1	Members	

## RSPO Certification Assessment Report

### KUD Karya Mulya

Bumi Makmur , Nibung Sub district, Musi Rawas District, South Sumatera Province,  
Indonesia



Page 54 of 75

#### 3.5 Acknowledgements of Internal Responsibility and Formal Sign-Off by Client

It is acknowledged that the assessment visit was carried out as described in this report and we accept the assessment findings and report content.

Signed on behalf of PT TUV Rheinland Indonesia

A handwritten signature in black ink, appearing to read 'Dading'.

Panggading Hariara Nainggolan  
Lead Auditor  
Date: 17 November 2017

Signed on behalf of KUD Karya Mulya

A handwritten signature in black ink, appearing to read 'Yuli Sari Yeni'.

Yuli Sari Yeni  
Smallholder coordinator  
Date : 17 November 2017

# RSPO Certification Assessment Report

## KUD Karya Mulya

Bumi Makmur , Nibung Sub district, Musi Rawas District, South Sumatera Province,  
Indonesia



Page 55 of 75

### APPENDICES

#### Appendix 1: Details of Certificate

# Certificate

**Standard :** RSPO Management System Requirement and Guidance for Group Certification of FFB Production, March 2016

**Certificate Registr. No. :** 824 502 17065

**Certificate Holder :** PT TUV Rheinland Indonesia certifies :  
**KUD Karya Mulya**  
Bumi Makmur Village, Nibung Sub District,  
Musi Rawas Utara District, South Sumatera Province,  
Indonesia

and its company owned estates according to the annex

**RSPO number :** -  
**Scope :** Palm Oil Plantation Management System for Independent Smallholder


An audit was performed, Report No. CA\_82450217065. Proof has been furnished that the requirements according to RSPO Management System Requirement and Guidance for Group Certification of FFB Production, March 2016 are fulfilled.

**Validity:** The due date for all future surveillance audits is 23.11 (dd.mm).  
The certificate is valid from 24-11-2017 until 23-11-2022.  
The certificate shall remain valid in period stipulated above provided that the certificate holder mentioned here continues to comply with the RSPO P&C requirements. Status of compliance of the certificate holder shall be based on the annual inspections conducted by PT TUV Rheinland Indonesia.

**RSPO registered parents company\* :** KUD Karya Mulya  
(RSPO Member No. : 1-0229-17-000-00)  
\* Name of the RSPO registered member company of which the certificate holder is a subsidiary (if applicable)

**Date of first certificate :** November 24<sup>th</sup>, 2017

Indonesia, 24-11-2017

  
PT TUV Rheinland Indonesia  
Director

The certificate remains property of PT TUV Rheinland Indonesia and can be withdrawn in case of terminations as mentioned in the contract or in case of changes or deviations of the above-mentioned data. The licensee is obliged to inform PT TUV Rheinland Indonesia immediately of any changes in the above-mentioned data. Only an original and signed certificate is valid.

www.tuv.com





# Annex to certificate

Standard : **RSPO Management System Requirement and Guidance for Group Certification of FFB Production, March 2016**

Certificate Registr. No.: 824 502 17065

Location: **KUD Karya Mulya**  
Address : Bumi Makmur Village, Nibung Sub District  
Musi Rawas Utara District, South Sumatera Province  
Indonesia

The group farmers of supply base covered in certification scope are :

Name of group	Location	GPS locations	
		Latitude	Longitude
Sentosa	Bumi Makmur village, Nibung Sub District, Musi Rawas Utara District, South Sumatera Province, Indonesia	02°29'31.92"S	103°00'15.67"E
Bumi Asih A		02°29'37.31"S	103°00'34.17"E
Sri Rejeki B		02°29'11.14"S	103°01'03.14"E
Krida Utama A		02°29'19.50"S	103°00'36.67"E
Tani Mulya A		02°28'36.51"S	103°00'20.52"E
Tani Mulya B		02°29'39.03"S	103°00'52.84"E
Gading Mulya A		02°29'02.47"S	103°00'31.75"E
Gading Mulya B		02°28'09.05"S	103°59'72.47"E
Gading Mulya C		02°28'10.66"S	103°59'50.86"E
Gading Mulya D		02°28'26.48"S	103°00'16.77"E
Sasana Sejahtera		02°29'20.66"S	103°00'07.67"E
Kusuma Bhakti A		02°28'20.54"S	102°58'29.79"E
Kusuma Bhakti B		02°29'12.97"S	102°59'52.63"E
Ngudi Rahayu B		02°27'35.23"S	103°00'17.37"E
Bina Tani Sejahtera		02°27'20.34"S	103°00'52.51"E
Suka Maju A		02°29'19.50"S	103°00'36.67"E
Usaha Baru		02°28'41.71"S	103°00'37.30"E
Tunas Baru A		02°29'02.23"S	103°00'30.99"E

**Group Farmers Estates FFB Tonnages (Actual**

Production 2016)	: 6,823.870	Tonnes
FFB Tonnage claimed for certification*	: 7,637.954	Tonnes
CPO Equivalent*	: 1,530.284	Tonnes
PKO Equivalent*	: 166.592	Tonnes
PKE Equivalent*	: 203.612	Tonnes
PK Equivalent*	: 370.204	Tonnes

\*projected output of January to December 2017

Scope of SCCS & FFB produce with implementation of the following SCCS :  
supply chain model assessed :  Identity Preserved  
 Mass Balance

Indonesia, 24-11-2017

PT TÜV Rheinland Indonesia  
Director

**Issued by PT TÜV Rheinland Indonesia**

# Annex to certificate

Standard : **RSPO Management System Requirement and Guidance for Group Certification of FFB Production, March 2016**

Certificate Registr. No.: 824 502 17065

Location: **KUD Karya Mulya**  
Address : Bumi Makmur Village, Nibung Sub District  
Musi Rawas Utara District, South Sumatera Province  
Indonesia

List of Group Members and Total Planted Area (Ha):

**Gading Mulya A Group Member**

NO	Name	Planted Area (Ha)
1	Sutrisno	15.57
2	Darmo Simin	1.95
3	Sardi	1.93
Total Area		19.45

**Sri Rejeki B Group Member**

NO	Name	Planted Area (Ha)
1	Wiwit Lestari	2.01
2	Misni Wibowo	1.93
3	Jumirah	2.06
4	Saimin	2.06
Total Area		8.04



# Annex to certificate

**Standard :** RSPO Management System Requirement and Guidance  
for Group Certification of FFB Production, March 2016

**Certificate Registr. No.:** 824 502 17065

**Location:** KUD Karya Mulya  
**Address :** Bumi Makmur Village, Nibung Sub District  
Musi Rawas Utara District, South Sumatera Province  
Indonesia

**List of Group Members and Total Planted Area (Ha):**

**Gading Mulya D Group Member**

NO	Name	Planted Area (Ha)
1	Sutarno	5.87
2	Sumarno	1.95
<b>Total Area</b>		<b>7.83</b>

**Santoso Group Member**

NO	Name	Planted Area (Ha)
1	Faturrochman	2.01
2	Prastyono	2.01
3	M Zeni Riwayanto	2.01
4	Anwar Sanusi	4.01
5	Sutarman	2.01
6	Hadi Sukiran	2.01
7	Erna Ningsih	1.93
8	Suprianto	1.93
9	Kemis	1.93
10	Sarmin	2.01
<b>Total Area</b>		<b>21.82</b>

# Annex to certificate

**Standard :** RSPO Management System Requirement and Guidance for Group Certification of FFB Production, March 2016

**Certificate Registr. No.:** 824 502 17065

**Location:** KUD Karya Mulya  
**Address :** Bumi Makmur Village, Nibung Sub District  
Musi Rawas Utara District, South Sumatera Province  
Indonesia

**List of Group Members and Total Planted Area (Ha):**

**Suka Maju Group Member**

NO	Name	Planted Area (Ha)
1	Suyono	2.00
2	Sungkono	2.00
3	Hadi Tulus	2.00
4	M. Gufron	2.00
5	Suyatno	2.00
6	Somo Parni	2.00
7	Suwandi	2.00
8	Darmo Simin	2.00
9	Marjo	2.00
10	Suparjo	4.00
11	M Yasin Anshori	2.00
12	Marwanto	2.00
13	M.Yasin Anshori	2.00
14	Wasis Pamuji, SE	2.00
<b>Total Area</b>		<b>30</b>

**Usaha Baru Group Member**

NO	Name	Planted Area (Ha)
1	M. Subhan	1.98
2	Sutrisno	1.98
3	Sukimin	1.98
4	Adi Suwarni	1.98
5	Fathkurohman	1.98
6	Pardi	1.98
7	Sudarmi	1.98
8	Kasrin	1.98
9	Adi Suwarni	1.98
10	Suwadi	1.98
11	M.Amir Rudin	1.98
12	Suparjo	1.98
13	Suryati	1.98
14	Zaenal Abidin	1.98
15	Sutini	1.98
16	Samiran	1.98
17	Hadi Sukiran	2.00
18	Sutini	1.98
<b>Total Area</b>		<b>35.71</b>



# Annex to certificate

**Standard :** RSPO Management System Requirement and Guidance for Group Certification of FFB Production, March 2016

**Certificate Registr. No.:** 824 502 17065

**Location:** KUD Karya Mulya  
**Address :** Bumi Makmur Village, Nibung Sub District  
Musi Rawas Utara District, South Sumatera Province  
Indonesia

**List of Group Members and Total Planted Area (Ha):**

**Bina Sejahtera Group Member**

NO	NAMA	Planted Area (Ha)
1	Aan	2.00
2	Warsiyam	2.04
3	Sarjono	1.98
4	Suyono	1.98
5	Dwi Rugito	2.16
6	Ismun	2.17
7	Suparlan	1.96
8	Sukatno	2.01
9	Suparman	2.20
10	Lasmi	2.09
11	Sinto Yuwono	2.01
12	Faturrohman	2.00
13	Fransiska Yuliariani	2.01
14	Kasiman	2.01
<b>Total Area</b>		<b>28.64</b>

**Suka Maju Group Member**

NO	NAMA	Planted Area (Ha)
1	Yuli Astuti, SH	3.70
2	Suyono	2.01
3	Mustofa Hakim	3.91
4	Suyono	2.03
5	Lamidi	1.98
6	Kasiyanto	1.98
7	Aulia Rahman	1.98
<b>Total Area</b>		<b>17.58</b>

# Annex to certificate

Standard : **RSPO Management System Requirement and Guidance for Group Certification of FFB Production, March 2016**

Certificate Registr. No.: **824 502 17065**

Location: **KUD Karya Mulya**  
Address : **Bumi Makmur Village, Nibung Sub District  
Musi Rawas Utara District, South Sumatera Province  
Indonesia**

List of Group Members and Total Planted Area (Ha):

**Kusuma Bhakti A Group Member**

**Ngudi Rahayu B Group Member**

NO	Name	Planted Area (Ha)
1	Yuhono	1.92
2	Kasrin	1.92
3	M. Subhan	1.92
4	Suyanto	1.98
Total Area		7.74

NO	Name	Planted Area (Ha)
1	Katimin	2.01
2	M.Taslim	2.01
3	M.Taslim	2.01
4	Martono	2.01
5	M Aminudin Anwar	2.01
6	Parni	2.01
7	Shodikin	2.01
8	Suwarno	1.98
9	Saiin	2.01
10	Sudarno	2.01
Total Area		20.03



# Annex to certificate

**Standard :** RSPO Management System Requirement and Guidance for Group Certification of FFB Production, March 2016

**Certificate Registr. No.:** 824 502 17065

**Location:** **KUD Karya Mulya**  
**Address :** Bumi Makmur Village, Nibung Sub District  
Musi Rawas Utara District, South Sumatera Province  
Indonesia

List of Group Members and Total Planted Area (Ha):

**Sasana Sejahtera Group Member**

NO	Name	Planted Area (Ha)
1	Marwanto	2.01
2	Darmo Simin	1.92
3	Kasrin	2.01
4	Wakiran	1.92
5	Kasiman	1.92
6	M. Subhan	1.93
7	Sukiman	1.93
Total Area		13.62

**Gading Mulya C Group Member**

NO	Name	Planted Area (Ha)
1	Sumardi	1.92
2	Muhadi	1.92
3	Kasrin	1.92
4	Nur Sahid	1.92
5	Zaenal Abidin	1.92
Total Area		9.6

# Annex to certificate

**Standard :** RSPO Management System Requirement and Guidance for Group Certification of FFB Production, March 2016

**Certificate Registr. No.:** 824 502 17065

**Location:** KUD Karya Mulya  
**Address :** Bumi Makmur Village, Nibung Sub District  
Musi Rawas Utara District, South Sumatera Province  
Indonesia

List of Group Members and Total Planted Area (Ha):

**Tani Mulya A Group Member**

NO	Name	Planted Area (Ha)
1	Samiran	1.91
2	Sukardi	1.90
3	Kadrianto	2.00
4	Julianto	2.00
5	Sutrisno	2.00
6	Suparman	2.00
7	Parjono	2.25
8	Y.Sugianto	2.00
9	Marwanto	2.00
10	Prastiyono	2.00
11	Sulistiwati	2.00
Total Area		22.03

**Gading Mulya B Group Member**

NO	Name	Planted Area (Ha)
1	Fitri Anayanti	1.92
2	Suryadi	1.95
3	Yuyun	1.65
4	Umi Hanik	1.95
5	Samiran	1.92
Total Area		9.40



# Annex to certificate

**Standard :** RSPO Management System Requirement and Guidance  
for Group Certification of FFB Production, March 2016

**Certificate Registr. No.:** 824 502 17065

**Location:** **KUD Karya Mulya**  
**Address :** Bumi Makmur Village, Nibung Sub District  
Musi Rawas Utara District, South Sumatera Province  
Indonesia

List of Group Members and Total Planted Area (Ha):

**Kusuma Bhakti B Group Member**

**Krida Utama Group Member**

NO	Name	Planted Area (Ha)
1	Suyadi	1.92
2	Sundarti	2.01
3	Suyadi	1.91
Total Area		5.83

NO	Name	Planted Area (Ha)
1	Narto	2.01
2	Sarmin	2.01
3	Kasino	2.01
4	Sukardi	2.01
5	Marwanto	2.01
6	Y. Sugianto	2.01
7	Jumangin	2.01
8	Narto	2.01
9	Wahyono	2.01
10	Somo Parni	2.01
11	Sukiman	2.01
Total Area		22.06

# Annex to certificate

**Standard :** **RSPO Management System Requirement and Guidance for Group Certification of FFB Production, March 2016**

**Certificate Registr. No.:** 824 502 17065

**Location:** **KUD Karya Mulya**  
**Address :** Bumi Makmur Village, Nibung Sub District  
Musi Rawas Utara District, South Sumatera Province  
Indonesia

List of Group Members and Total Planted Area (Ha):

**Tani Mulya B Group Member**

NO	Name	Planted Area (Ha)
1	Apri	2.01
2	Sutarno	1.78
3	Atmo Sukarno	2.00
4	Hadi Sukiran	2.10
<b>Total Area</b>		<b>7.88</b>

**Bumi Asih Group Member**

NO	Name	Planted Area (Ha)
1	Sumali	2.01
2	Sungkono	2.01
3	Parni	2.01
4	Suyatno	2.01
5	Hadi Sukimin	2.01
6	Sungkono	2.01
7	Mamik Suseno	2.01
8	Muhyidin	2.01
9	Suyono	2.01
10	Sutarman	2.01
11	Kamto	2.01
12	Robi Zrohli	2.01
13	Suwandi	2.01
14	Sujianto	2.01
15	Mario	2.01
16	Sutekno	2.01
17	Sukarni	2.06
18	Robi zrohli	2.06
<b>Total Area</b>		<b>36.19</b>

# RSPO Certification Assessment Report

## KUD Karya Mulya



Bumi Makmur , Nibung Sub district, Musi Rawas District, South Sumatera Province,  
Indonesia

Page 66 of 75

### Appendix 2: Certification Audit Plan

Date / Time	Organizational Unit and Processes	Auditor	Auditee	Principle & Criteria
<b>Monday 29 May 2017</b>				
13.30	Flight from Jakarta – Lubuk Linggau	All Auditors	-	
13.30 – 17.00	Travelling from Lubuk Linggau to KUD Karya Mulya	All Auditors	-	
<b>Tuesday 30 May 2017</b>				
08.00 – 12.00	<ul style="list-style-type: none"> <li>• Opening Meeting</li> <li>• Introduction of Auditor Team</li> <li>• KUD profile</li> </ul>		Cooperative & Group Manager	
08.00 – 12.00	Documents : <ul style="list-style-type: none"> <li>• Group certification</li> <li>• Legality of land</li> <li>• Occupational Health and Safety</li> <li>• Best Cultivation Practices</li> <li>• Use of Pesticides</li> </ul>	NM	Cooperative & Group Manager	<b>Section 2</b> E 1.1-1.2 & E 3.2 <b>Section 3</b> Principle 2 Criteria; 2.1.1 ; 2.2.1-2.2.2 Principle 4 Kriteria :4.1.3; 4.1.4; 4.5 ,4.6,4.7 Principle 8
08.00 – 12.00	Documents : <ul style="list-style-type: none"> <li>• Transparency</li> <li>• Land conflicts</li> <li>• Social Impact Assessment (AIS)</li> <li>• Communication and consultation</li> <li>• Complaints and complaints</li> <li>• Compensation</li> <li>• Contract workers</li> <li>• Labor union</li> <li>• Minimum age requirement</li> <li>• Discrimination</li> <li>• Sexual harassment</li> </ul>	PN	Cooperative & Group Manager	<b>Section 2</b> E 2 <b>Section 3</b> Principle 1 Criteria 1.1.; Principle 2 Criteria 2.2.3 to 2.2.6; 2.3 Principle 6 Criteria 6.1; 6.2; 6.3; 6.4; 6.5; 6.6; 6.7;6.8; 6.9; 6.11; 6.12; Principle 7 Criteria : 7.5; 7.6;
08.00 – 12.00	Documents: <ul style="list-style-type: none"> <li>• Compliance to legislation</li> <li>• Water management plan</li> <li>• Procedures</li> <li>• Best Cultivation Practices</li> <li>• Integrated Pest Management</li> <li>• Chemicals</li> <li>• Training</li> <li>• Without Burn</li> <li>• New plantings (if any)</li> <li>• Continuous improvement of local businesses</li> <li>• Contributions to local improvements</li> </ul>	AS	Cooperative & Group Manager	<b>Section 2</b> E 3.1 <b>Section3</b> Principle 2 Criteria; 2.1.1-2.1.4 Principle 3 Criteria 3.1 Principle 4 Criteria :4.1.1-4.1.2 ; 4.2; 4.3; 4.4; 4.8 Principle 5 Criteria 5.5 Principle 6 Criteria 6.10; Principle 7 Criteria : 7.2; 7.4; 7.7 Principle 8
08.00 – 12.00	Documents <ul style="list-style-type: none"> <li>• Code of Ethics</li> <li>• Environmental Documents</li> <li>• High Conservation Value</li> <li>• Waste</li> <li>• Fuel efficiency and the use of renewable energy</li> <li>• Greenhouse Gases</li> <li>• New plantings (if any)</li> <li>• Continuous improvement</li> </ul>	ADS	Cooperative & Group Manager	<b>Section 3</b> Principle 1 Criteria 1.2; 1.3 Principle 2 Criteria; 2.1.1 Principle 5: Kriteria 5.1; 5.2; 5.3; 5.4; 5.6 Principle 6 Criteria 6.13 Principle 7



# RSPO Certification Assessment Report

## KUD Karya Mulya



Bumi Makmur , Nibung Sub district, Musi Rawas District, South Sumatera Province,  
Indonesia

Page 67 of 75

Date / Time	Organizational Unit and Processes	Auditor	Auditee	Principle & Criteria
				Criteria : 7.1; 7.3; Principle 8
12.00-14.00	Break	All Auditors		
14.00-17.00	Continue the audit activities	All Auditors		All Principle and Criteria
	<b>End day 2</b>			
<b>Wednesday 31 May 2017</b>				
08.00 – 12.00	Public Consultation	All Auditors		
12.00-14.00	Break	All Auditors		
14.00-17.00	Documents : • Group certification • Legality of land • Occupational Health and Safety • Best Cultivation Practices • Use of Pesticides	NM	Cooperative & Group Manager	<b>Section 2</b> E 1.1-1.2 & E 3.2 <b>Section 3</b> Principle 2 Criteria; 2.1.1 ; 2.2.1-2.2.2 Principle 4 Kriteria :4.1.3; 4.1.4; 4.5 ,4.6,4.7 Principle 8
14.00-17.00	Documents : • Transparency • Land conflicts • Social Impact Assessment (SIA) • Communication and consultation • Complaints and complaints • Compensation • Contract workers • Labor union • Minimum age requirement • Discrimination • Sexual harassment	PN	Cooperative & Group Manager	<b>Section 2</b> E 2 <b>Section 3</b> Principle 1 Criteria 1.1.; Principle 2 Criteria 2.2.3 to 2.2.6; 2.3 Principle 6 Criteria 6.1; 6.2; 6.3; 6.4; 6.5; 6.6; 6.7;6.8; 6.9; 6.11; 6.12; Principle 7 Criteria : 7.5; 7.6;
14.00-17.00	Documents: • Transparency • Land conflicts • Social Impact Assessment (AIS) • Communication and consultation • Complaints and complaints • Compensation • Contract workers • Labor union • Minimum age requirement • Discrimination • Sexual harassment	AS	Cooperative & Group Manager	<b>Section 2</b> E 3.1 <b>Section3</b> Principle 2 Criteria; 2.1.1-2.1.4 Principle 3 Criteria 3.1 Principle 4 Criteria :4.1.1-4.1.2 ; 4.2; 4.3; 4.4; 4.8 Principle 5 Criteria 5.5 Principle 6 Criteria 6.10; Principle 7 Criteria : 7.2; 7.4; 7.7 Principle 8
14.00-17.00	Documents • Code of Ethics • Environmental Documents • High Conservation Value • Waste • Fuel efficiency and the use of renewable energy • Greenhouse Gases • New plantings (if any)	ADS	Cooperative & Group Manager	<b>Section 3</b> Principle 1 Criteria 1.2; 1.3 Principle 2 Criteria; 2.1.1 Principle 5: Kriteria 5.1; 5.2; 5.3; 5.4; 5.6 Principle 6 Criteria 6.13

# RSPO Certification Assessment Report

## KUD Karya Mulya



Bumi Makmur , Nibung Sub district, Musi Rawas District, South Sumatera Province,  
Indonesia

Page 68 of 75

Date / Time	Organizational Unit and Processes	Auditor	Auditee	Principle & Criteria
	<ul style="list-style-type: none"> <li>• Continuous improvement</li> </ul>			Principle 7 Criteria : 7.1; 7.3; Principle 8
	<b>End day 3</b>			
<b>Thursday, 01 June 2017</b>				
08.00 – 12.00	Field Observation and ICS : <ul style="list-style-type: none"> <li>• Group certification</li> <li>• Legality of land</li> <li>• Occupational Health and Safety</li> <li>• Best Cultivation Practices</li> <li>• Use of Pesticides</li> </ul>	NM	Cooperative & Group Manager	<b>Section 2</b> E 1.1-1.2 & E 3.2 <b>Section 3</b> Principle 2 Criteria; 2.1.1 ; 2.2.1-2.2.2 Principle 4 Kriteria :4.1.3; 4.1.4; 4.5 ,4.6,4.7 Principle 8
08.00 – 12.00	Field Observation and ICS : <ul style="list-style-type: none"> <li>• Transparency</li> <li>• Land conflicts</li> <li>• Social Impact Assessment (SIA)</li> <li>• Communication and consultation</li> <li>• Complaints and complaints</li> <li>• Compensation</li> <li>• Contract workers</li> <li>• Labor union</li> <li>• Minimum age requirement</li> <li>• Discrimination</li> <li>• Sexual harassment</li> </ul>	PN	Cooperative & Group Manager	<b>Section 2</b> E 2 <b>Section 3</b> Principle 1 Criteria 1.1.; Principle 2 Criteria 2.2.3 to 2.2.6; 2.3 Principle 6 Criteria 6.1; 6.2; 6.3; 6.4; 6.5; 6.6; 6.7;6.8; 6.9; 6.11; 6.12; Principle 7 Criteria : 7.5; 7.6;
08.00 – 12.00	Field Observation and ICS : <ul style="list-style-type: none"> <li>• Transparency</li> <li>• Land conflicts</li> <li>• Social Impact Assessment (AIS)</li> <li>• Communication and consultation</li> <li>• Complaints and complaints</li> <li>• Compensation</li> <li>• Contract workers</li> <li>• Labor union</li> <li>• Minimum age requirement</li> <li>• Discrimination</li> <li>• Sexual harassment</li> </ul>	AS	Cooperative & Group Manager	<b>Section 2</b> E 3.1 <b>Section3</b> Principle 2 Criteria; 2.1.1-2.1.4 Principle 3 Criteria 3.1 Principle 4 Criteria :4.1.1-4.1.2 ; 4.2; 4.3; 4.4; 4.8 Principle 5 Criteria 5.5 Principle 6 Criteria 6.10; Principle 7 Criteria : 7.2; 7.4; 7.7 Principle 8
08.00 – 12.00	Field Observation and ICS : <ul style="list-style-type: none"> <li>• Code of Ethics</li> <li>• Environmental Documents</li> <li>• High Conservation Value</li> <li>• Waste</li> <li>• Fuel efficiency and the use of renewable energy</li> <li>• Greenhouse Gases</li> <li>• New plantings (if any)</li> <li>• Continuous improvement</li> </ul>	ADS	Cooperative & Group Manager	<b>Section 3</b> Principle 1 Criteria 1.2; 1.3 Principle 2 Criteria; 2.1.1 Principle 5: Kriteria 5.1; 5.2; 5.3; 5.4; 5.6 Principle 6 Criteria 6.13 Principle 7 Criteria : 7.1; 7.3; Principle 8
12.00- 14.00	Break	All Auditors		
14.00- 17.00	Closing Meeting	All Auditors	Cooperative & Group Manager	All Principle and Criteria



# RSPO Certification Assessment Report

## KUD Karya Mulya



Bumi Makmur , Nibung Sub district, Musi Rawas District, South Sumatera Province, Indonesia

Page 69 of 75

Date / Time	Organizational Unit and Processes	Auditor	Auditee	Principle & Criteria
	<b>End day 4</b>			
<b>Friday, 02 June 2017</b>				
08.30-12.00	Travelling from site to airport	All Auditors		
14.00-15.00	Flight from Lubuk Linggau to Jakarta	All Auditors		

### Appendix 3: List of Abbreviations

FFB	Fresh Fruit Bunches
HCV	High Conservation Value
IPM	Integrated Pest Management
OHS	Occupation, Health and Safety
NPP	New Planting Procedure
SHM	Sertifikat Hak Milik (certificate of ownership)
SPPL	Surat Pernyataan Pengelolaan Lingkungan (Environmental Impact Statement Letter)
PPE	Personal Protection Equipment

### Appendix 4: List of Stakeholders Interviewed and Contacted

No.	Name of Stakeholder	Institution / Position	Remarks
<b>Stakeholders Interviewed during Public Consultation Meeting</b>			
1.	Yatno	Bumi Makmur Village Head	
2.	Mugo Hartono	Sub District Nibung Representative	
3.	Sukirno	Head Sidomakmur Sub village	
4.	Muhammad Mukron	Religious /Local Leader	
5.	Taryanto	Bumi Makmur Village Citizen	
6.	Taufik Yuzar	Musi Rawas Utara District Environment Agency	
7.	Fadilah	Head Section Cooperative -UKM Co-operative Agency-	
<b>Stakeholders Interviewed On-Site</b>			
1	Suyono	Group Manager	
2	Yuhono	Member of Kusuma Bhakti A farmer group	
3	Suprianto	Member of Sentosa farmer group	
4	Apriansyah	Member of Tani Mulya B farmer group	
5	Sutrisno	Member of Gading Mulya B farmer group	
6	Suwandi	Member of Bumi Asih farmer group	
7	Samiran	Member of Tani Mulya A farmer group	
8	Suparjo	Member of Usaha Baru farmer group	
9	Zainal Abidin	Member of Gading Mulya C farmer group	
10	Sutrisno	Member of Gading Mulya A farmer	

# RSPO Certification Assessment Report

## KUD Karya Mulya



Bumi Makmur , Nibung Sub district, Musi Rawas District, South Sumatera Province, Indonesia

		group	
11	Sutini	Member of Usaha Baru farmer group	
12	Kasiman	Member of Sasana Sejahtera farmer group	
13	Amirudin	Member of Usaha Baru farmer group	
14	Kasrin	Member of Usaha Baru farmer group	
15	Suyadi	Member of Kusuma Bakti farmer group	
16	Apriansyah	Member of Tani Mulya B famer group	
17	Samiran	Member of Tani Mulya A farmer group	
18	Kadrianto	Member of Tani Mulya A farmer group	
19	Parjono	Member of Tani Mulya A farmer group	
20	Prasetyono	Member of Tani Mulya A farmer group	
21	Sutrisno	Member of Tani Mulya A farmer group	
22	Sujiyanto	Member of Bumi Asih farmer group	
23	Muhyidin	Member of Bumi Asih farmer group	
24	Suwandi	Member of Bumi Asih farmer group	
25	Sungkono	Member of Bumi Asih farmer group	

### Appendix 5: List of KUD Karya Mulya Members Included in RSPO Scope Audit

NO	NAMA	KELOMPOK TANI	LUAS LAHAN (M2)	JUMLAH POKOK	TTL	NIK	TAHUN TANAM	NOMOR SERTIPIKAT
<b>KELOMPOK TANI MULYA B</b>								
0001	Apri	Tani Mulya B	20,050	280	Tugu Mulyo, 14 April 1976	1605161404760002	1996	1630
0002	Sutarno	Tani Mulya B	17,820	280	Ngawi, 23 Maret 1980	1605162303800001	1996	1626
0003	Atmo Sukarno	Tani Mulya B	19,970	280	Ngawi, 30 Juni 1945	1605163006450002	1996	1689
0004	Hadi Sukiran	Tani Mulya B	21,000	280	Madiun, 03 September 1945	1605160309450002	1996	1636
	Jumlah		<b>78,840</b>					
NO	NAMA	KELOMPOK TANI	LUAS LAHAN (M2)	JUMLAH POKOK	TTL	NIK	TAHUN TANAM	NOMOR SERTIPIKAT
<b>KELOMPOK TANI BUMI ASIH</b>								
5	Sumali	Bumi Asih	20,050	280	Magetan, 01 Juli 1977	1605160107770010	1996	1808
6	Sungkono	Bumi Asih	20,050	280	Magetan, 26 Mei 1983	1605162605830002	1996	1806
7	Parni	Bumi Asih	20,050	280	Magetan, 08 April 1973	1605160804730001	1996	1826
8	Suyatno	Bumi Asih	20,050	280	Magetan, 12 April 1963	1605161204630002	1996	1804
9	Hadi Sukimin	Bumi Asih	20,050	280	Ngawi, 22 Januari 1972	1605162201720002	1996	1803
10	Sungkono	Bumi Asih	20,050	280	Magetan, 26 Mei 1983	1605162605830002	1996	1755
11	Mamik Suseno	Bumi Asih	20,050	280	Magetan, 20 Mei 1984	1605162005840002	1996	1756
12	Muhyidin	Bumi Asih	20,050	280	Ngawi, 11 Agustus 1951	1605161108510003	1996	1868
13	Suyono	Bumi Asih	20,050	280	Musi Rawas, 05 Juli 1974	1605160507740003	1996	1869
14	Sutarman	Bumi Asih	20,050	280	Ngawi, 13 September 1977	1605161309770001	1996	1870
15	Kamto	Bumi Asih	20,050	280	Magetan, 28 April 1986	1605162804860002	1996	1805
16	Robi Zrohli	Bumi Asih	20,050	280	Ponorogo, 29 Oktober 1985	1605162910850002	1996	1825
17	Suwandi	Bumi Asih	20,050	280	Magetan, 01 September 1979	1605160109790003	1996	1824
18	Sujianto	Bumi Asih	20,050	280	Ngawi, 17 Juli 1984	1605161707840003	1996	1823
19	Mario	Bumi Asih	20,050	280	Lampung, 27 Desember 1978	1605162712780002	1996	1822
20	Sutekno	Bumi Asih	20,050	280	Ngawi, 19 April 1979	1605161904790002	1996	1821
21	Sukarni	Bumi Asih	20,560	280	Magetan, 14 Juli 1966	1605161407660004	1996	1810
22	Robi zrohli	Bumi Asih	20,560	280	Ponorogo, 29 Oktober 1985	1605162910850002	1996	1809
	Jumlah		<b>422,580</b>					
NO	NAMA	KELOMPOK TANI	LUAS LAHAN (M2)	JUMLAH POKOK	TTL	NIK	TAHUN TANAM	NOMOR SERTIPIKAT
<b>KELOMPOK TANI KUSUMA BHAKTI B</b>								
23	Suyadi	KUSUMA BHAKTI B	19200	280	Ngawi, 16 Maret 1964	1605161603640002	1996	1641
24	Sundarti	KUSUMA BHAKTI B	20050	280	Magetan, 11 Januari 1976	1605161101760001	1996	2135
25	Suyadi	KUSUMA BHAKTI B	19125	280	Ngawi, 16 Maret 1964	1605161603640002	1996	1772
	Jumlah		<b>197560</b>					

# RSPO Certification Assessment Report

## KUD Karya Mulya



Bumi Makmur , Nibung Sub district, Musi Rawas District, South Sumatera Province, Indonesia

Page 71 of 75

NO	NAMA	KELOMPOK TANI	LUAS LAHAN (M <sup>2</sup> )	JUMLAH POKOK	TTL	NIK	TAHUN TANAM	NOMOR SERTIPIKA T
<b>KELOMPOK TANI KRIDA UTAMA</b>								
26	Narto	KRIDA UTAMA	20,050	280	Ngawi, 14 Juli 1966	1605161407660003	1996	1637
27	Sarmin	KRIDA UTAMA	20,050	280	Magetan, 21 Maret 1967	1605162103670002	1996	1790
28	Kasino	KRIDA UTAMA	20,050	280	Ngawi, 13 Mei 1967	1605161305670001	1996	1753
29	Sukardi	KRIDA UTAMA	20,050	280	Pati, 03 Februari 1970	1605160302700002	1996	1722
30	Marwanto	KRIDA UTAMA	20,050	280	Magetan, 31 Januari 1974	1605163101740002	1996	1748
31	Y. Sugianto	KRIDA UTAMA	20,050	280	Magetan, 01 Januari 1980	1605160101800008	1996	1751
32	Jumangin	KRIDA UTAMA	20,050	280	Ponorogo, 01 Juli 1954	1605160107540011	1996	1786
33	Narto	KRIDA UTAMA	20,050	280	Ngawi, 14 Juli 1966	1605161407660003	1996	1783
34	Wahyono	KRIDA UTAMA	20,050	280	Ngawi, 10 Mei 1963	1605161005630002	1996	1791
35	Somo Parni	KRIDA UTAMA	20050	280	Ngawi, 21 Maret 1965	1605162103650002	1996	1792
36	Sukiman	KRIDA UTAMA	20,050	280		160516	1996	1793
Jumlah			240,600					

NO	NAMA	KELOMPOK TANI	LUAS LAHAN (M <sup>2</sup> )	JUMLAH POKOK	TTL	NIK	TAHUN TANAM	NOMOR SERTIPIKA T
<b>KELOMPOK TANI MULYA A</b>								
37	Samiran	TANI MULYA A	19050	280	Magetan, 07 Agustus 1966	1605160708660005	1996	1623
38	Sukardi	TANI MULYA A	19000	280	Pati, 03 Februari 1970	1605160302700002	1996	1624
39	Kadrianto	TANI MULYA A	19970	280	Cirebon, 05 Februari 1973	1605160502730002	1996	1654
40	Julianto	TANI MULYA A	19970	280	Magetan, 10 Oktober 1966	1605161010660003	1996	1690
41	Sutrisno	TANI MULYA A	19970	280	Ngawi, 14 April 1970	1605161404700003	1996	1659
42	Suparman	TANI MULYA A	19970	280	Magetan, 03 November 1964	1605160311640001	1996	1691
43	Parjono	TANI MULYA A	22500	280	Patri, 12 Januari 1959	1605161201590001	1996	2421
44	Y.Sugianto	TANI MULYA A	20000	280	Magetan, 01 Januari 1980	1605160101800008	1996	2123
45	Marwanto	TANI MULYA A	19970	280	Magetan, 31 Januari 1974	1605163101740002	1996	1689
46	Prastiyono	TANI MULYA A	19970	280	Magetan, 13 Januari 1983	1605161301830003	1996	1657
47	Sulistiwati	TANI MULYA A	19970	280	Ngawi, 30 November 1984	1605163011840004	1996	1687
Jumlah			240310					

NO	NAMA	KELOMPOK TANI	LUAS LAHAN (M <sup>2</sup> )	JUMLAH POKOK	TTL	NIK	TAHUN TANAM	NOMOR SERTIPIKA T
<b>KELOMPOK TANI GADING MULYA B</b>								
48	Fitri Anayanti	GADING MULYA B	19,200	280	Ngawi, 21 Juni 1984	1605166106840003	1996	1652
49	Suryadi	GADING MULYA B	19,530	280	Magetan, 27 Juli 1980	1605162707800003	1996	1611
50	Yuyun	GADING MULYA B	16,530	280	Ngawi, 25 Agustus 1959	1605162508590001	1996	1615
51	Umi Hanik	GADING MULYA B	19,530	280	Surabaya, 02 Juli 1956	1605164207560001	1996	1611
52	Samiran	GADING MULYA B	19,200	280	Magetan, 07 Agustus 1966	1605160708660005	1996	1668
Jumlah			132,720	1960				

NO	NAMA	KELOMPOK TANI	LUAS LAHAN (M <sup>2</sup> )	JUMLAH POKOK	PEMILIK ASAL	PEMILIK SEKARANG	TAHUN TANAM	NOMOR SERTIPIKA T
<b>KELOMPOK TANI GADING MULYA C</b>								
53	Sumardi	GADING MULYA C	19,200	280	Magetan, 03 Agustus 1949	1605160308490001	1996	1616
54	Muhadi	GADING MULYA C	19,200	280	Ngawi, 10 Oktober 1963	1605161010630001	1996	1617
55	Kasrin	GADING MULYA C	19,200	280	Magetan, 21 Maret 1957	1605162103570002	1996	1651
56	Nur Sahid	GADING MULYA C	19,200	280	Ngawi, 31 Desember 1960	1605163112600016	1996	1682
57	Zaenal Abidin	GADING MULYA C	19,200	280	Magetan, 27 Agustus 1982	1605162708820002	1996	1664
Jumlah			115,200					

# RSPO Certification Assessment Report

## KUD Karya Mulya



Bumi Makmur , Nibung Sub district, Musi Rawas District, South Sumatera Province,  
Indonesia

Page 72 of 75

NO	NAMA	KELOMPK TANI	LUAS LAHAN (M2)	JUMLAH POKOK	TTL	NIK	TAHUN TANAM	NOMOR SERTIPIKA T
<b>KELOMPOK TANI SASANA SEJAHTERA</b>								
0074	Marwanto	SASANA SEJAHTERA	20,050	280	Magetan, 31 Januari 1974	1605163101740002	1996	1693
0075	Darmo Simin	SASANA SEJAHTERA	19,200	280	Ngawi, 11 Juni 1959	1605161106590001	1996	1694
0077	Kasrin	SASANA SEJAHTERA	20,050	280	Magetan, 21 Maret 1957	1605162103570002	1996	1720
0082	Wakiran	SASANA SEJAHTERA	19,200	280	Magetan, 26 April 1976	1605162604760002	1996	1730
0083	Kasiman	SASANA SEJAHTERA	19,200	280	Ngawi, 10 Juli 1967	1605161007670002	1996	1731
0084	M. Subhan	SASANA SEJAHTERA	19,275	280	Semarang, 4 Februari 1973	1673010402730003	1996	1732
0088	Sukiman	SASANA SEJAHTERA	19,272	280	Magetan	160516	1996	1743
Jumlah			367,997					

NO	NAMA	KELOMPK TANI	LUAS LAHAN (M2)	JUMLAH POKOK	TTL	NIK	TAHUN TANAM	NOMOR SERTIPIKA T
<b>KELOMPOK TANI KUSUMA BHAKTI A</b>								
0093	Yuhono	KUSUMA BHAKTI A	19,200	280	Ngawi, 09 Agustus 1971	1605160908710002	1996	1678
0095	Kasrin	KUSUMA BHAKTI A	19,200	280	Magetan, 21 Maret 1957	1605162103570002	1996	1669
0096	M. Subhan	KUSUMA BHAKTI A	19,200	280	Semarang, 4 Februari 1973	1673010402730003	1996	1674
0098	Suyanto	KUSUMA BHAKTI A	19,830	280	Ngawi, 04 Januari 1968	1605160401680001	1996	2098
Jumlah			115,830	1680				

NO	NAMA	KELOMPK TANI	LUAS LAHAN (M2)	JUMLAH POKOK	TTL	NIK	TAHUN TANAM	NOMOR SERTIPIKA T
<b>KELOMPOK TANI NGUDI RAHAYU B</b>								
0099	Katimin	Ngudi Rah	20,050	280	Magetan, 10 April 1963	1605161004630001	1996	1977
0100	M.Taslim	Ngudi Rah	20,050	280	Ngawi, 12 Juni 1961	1605161206610002	1996	1963
0101	M.Taslim	Ngudi Rah	20,050	280	Ngawi, 12 Juni 1961	1605161206610002	1996	1983
0102	Martono	Ngudi Rah	20,050	280	Ngawi, 17 Juli 1942	1605161707420001	1996	1971
0103	M Aminud	Ngudi Rah	20,050	280	Bumi Makmur, 03 Agustus 1993	1605160308930002	1996	2030
0104	Parni	Ngudi Rah	20,050	280	Magetan, 25 Jui 1966	1605162506660001	1996	1976
0105	Shodikin	Ngudi Rah	20,050	280	Jombang, 10 Juli 1978	1605161007780002	1996	1979
0106	Suwarno	Ngudi Rah	19,830	280	Magetan, 14 mei 1956	1605161405560001	1996	2157
0107	Saiin	Ngudi Rah	20,050	280	Musi Rawas, 17 Oktober 1988	160516 17 10880003	1996	1966
0108	Sudarno	Ngudi Rah	20,050	280	Magetan, 23 Oktober 1956	1605162310560001	1996	1976
Jumlah			200,280					

# RSPO Certification Assessment Report

## KUD Karya Mulya



Bumi Makmur , Nibung Sub district, Musi Rawas District, South Sumatera Province, Indonesia

Page 73 of 75

NO	NAMA	KELOMPK TANI	LUAS LAHAN (M <sup>2</sup> )	JUMLAH POKOK	TTL	NIK	TAHUN TANAM	NOMOR SERTIPIKA T
<b>KELOMPOK TANI BINA SEJAHTERA</b>								
0109	Aan	Bina Tani Sejahtera	20,020	280	Sumedang, 12 Desember 1940	1605161212400002	1996	1586
0110	Warsiyam	Bina Tani Sejahtera	20,380	280	Ngawi, 27 Desember 1978	1605166712780001	1996	1585
0111	Sarjono	Bina Tani Sejahtera	19,792	280	Magetan, 12 Juli 1959	1605161207590003	1996	1584
0112	Suyono	Bina Tani Sejahtera	19,800	280	Musi Rawas, 05 Juli 1974	1605160507740003	1996	1583
0113	Dwi Rugito	Bina Tani Sejahtera	21,600	280	Magetan, 19 Juni 1984	1605161906840001	1996	1582
0114	Ismun	Bina Tani Sejahtera	21,700	280	Magetan, 10 November 1969	1605161011690001	1996	1580
0115	Suparlan	Bina Tani Sejahtera	19,640	280	Magetan, 14 April 1969	16051614 04690002	1996	1579
0116	Sukatno	Bina Tani Sejahtera	20,110	280	Ngawi, 31 Desember 1959	1605163112590003	1996	1578
0117	Suparman	Bina Tani Sejahtera	22,000	280	Magetan, 10 Mei 1959	1605161005590002	1996	1577
0118	Lasmi	Bina Tani Sejahtera	20,900	280	Pati, 16 Juli 1958	1605161607580001	1996	1574
0119	Sinto Yuwo	Bina Tani Sejahtera	20,140	280	Kediri, 03 November 1962	1605160311620002	1996	1572
0120	Faturrohm	Bina Tani Sejahtera	20,000	280	Jatim, 10 Oktober 1962	1605161010620002	1996	1568
0121	Fransiska Y	Bina Tani Sejahtera	20,140	280	Kediri, 23 Juli 1979	1605166307790001	1996	1563
0122	Kasiman	Bina Tani Sejahtera	20,140	280	Ngawi, 10 Juli 1967	1605161007670002	1996	1575
Jumlah			286,362					
NO	NAMA	KELOMPK TANI	LUAS LAHAN (M <sup>2</sup> )	JUMLAH POKOK	TTL	NIK	TAHUN TANAM	NOMOR SERTIPIKA T
<b>KELOMPOK TANI SUKA MAJU</b>								
0123	Yuli Astuti, SH	Suka Maju	19790	280	Palembang, 23 Juli 1969	1605162307690002	1996	1994
0124	Yuli Astuti, SH	Suka Maju	17300	280	Palembang, 23 Juli 1969	1605162307690002	1996	2012
0125	Suyono	Suka Maju	20050	280	Musi Rawas, 05 Juli 1974	1605160507740003	1996	1968
0126	Mustofa Hakim	Suka Maju	19300	280	Bingin Teluk, 21 November 1959	1605162111590004	1996	1988
0127	Mustofa Hakim	Suka Maju	19790	280	Bingin Teluk, 21 November 1959	1605162111590004	1996	2025
0128	Suyono	Suka Maju	20300	280	Musi Rawas, 05 Juli 1974	1605160507740003	1996	1998
0129	Lamidi	Suka Maju	19790	280	Magetan, 11 Mei 1956	1605161105560001	1996	2009
0130	Kasiyanto	Suka Maju	19790	280	Magetan, 20 Juli 1969	1605162007690001	1996	2017
0131	Aulia Rahman	Suka Maju	19790	280	Bingin Teluk, 17 Mei 1984	1605161705840001	1996	2046
			175900	2520				
NO	NAMA	KELOMPK TANI	LUAS LAHAN (M <sup>2</sup> )	JUMLAH POKOK	TTL	NIK	TAHUN TANAM	NOMOR SERTIPIKA T
<b>KELOMPOK TANI USAHA BARU</b>								
0147	M. Subhan	Usaha Baru	19,830	280	Semarang, 4 Februari 1973	1673010402730003	1996	2119
0148	Sutrisno	Usaha Baru	19,830	280	Ngawi, 14 April 1970	1605161404700003	1996	2101
0149	Sukimin	Usaha Baru	19,830	280	Magetan, 12 Oktober 1969	1605161210690001	1996	2117
0150	Adi Suwarni	Usaha Baru	19,830	280	Magetan 12 Agustus 1978	1605161208780004	1996	2116
0151	Fathkurohman	Usaha Baru	19,830	280	Jatim, 10 Oktober 1962	1605161010620002	1996	2115
0152	Pardi	Usaha Baru	19,830	280	Ponorogo, 18 Oktober 1957	1605161810570001	1996	2112
0153	Sudarmi	Usaha Baru	19,830	280	Ngawi, 12 Agustus 1965	1605161208650007	1996	2111
0154	Kasrin	Usaha Baru	19,830	280	Magetan, 21 Maret 1957	1605162103570002	1996	2110
0155	Adi Suwarni	Usaha Baru	19,830	280	Magetan 12 Agustus 1978	1605161208780004	1996	2109
0156	Suwadi	Usaha Baru	19,830	280	Ngawi, 30 Juni 1949	1605163006490002	1996	2108
0157	M.Amir Rudin	Usaha Baru	19,830	280	Kuningan, 07 Desember 1975	1605163006750002	1996	2107
0158	Suparjo	Usaha Baru	19,830	280	Cirebon, 12 April 1970	1605161204700004	1996	2105
0159	Suryati	Usaha Baru	19,830	280	Ngawi, 22 September 1957	1605162209570001	1996	2104
0160	Zaenal Abidin	Usaha Baru	19,830	280	Magetan, 27 Agustus 1982	1605162708820002	1996	2103
0161	Sutini	Usaha Baru	19,830	280	Ngawi, 13 September 1971	1605161309710003	1996	2096
0162	Samiran	Usaha Baru	19,830	280	Magetan, 07 Agustus 1966	1605160708660005	1996	2102
0163	Hadi Sukiran	Usaha Baru	20,000	280	Madiun, 03 September 1945	1605160309450002	1996	2100
0164	Sutini	Usaha Baru	19,830	280	Ngawi, 13 September 1971	1605161309710003	1996	2252
Jumlah			337,280	4760				
NO	NAMA	KELOMPK TANI	LUAS LAHAN (M <sup>2</sup> )	JUMLAH POKOK	TTL	NIK	TAHUN TANAM	NOMOR SERTIPIKA T
<b>KELOMPOK TANI TUNAS BARU</b>								
0132	Suyono	Tunas Baru	20,000	280	Musi Rawas, 05 Juli 1974	1605160507740003	1996	2120
0133	Sungkono	Tunas Baru	20,000	280	Magetan, 26 Mei 1983	1605162605830002	1996	2121
0134	Hadi Tulus	Tunas Baru	20,000	280	Ngawi, 23 Maret 1954	1605162303540002	1996	2124
0135	M. Gufron	Tunas Baru	20,000	280	Magetan, 10 Oktober 1954	1605161010540002	1996	2128

# RSPO Certification Assessment Report

## KUD Karya Mulya



Bumi Makmur , Nibung Sub district, Musi Rawas District, South Sumatera Province,  
Indonesia

Page 74 of 75

NO	NAMA	KELOMPK TANI	LUAS LAHAN (M <sup>2</sup> )	JUMLAH POKOK	TTL	NIK	TAHUN TANAM	NOMOR SERTIPIKA T
<b>KELOMPOK TANI GADING MULYA D</b>								
0165	Sutarno	GADING MULYA D	19,970	280	Ngawi, 09 Mei 1969	1605160905690002	1996	1660
0166	Sutarno	GADING MULYA D	19,200	280	Ngawi, 09 Mei 1969	1605160905690002	1996	1663
0167	Sumarno	GADING MULYA D	19,530	280	Ngawi, 31 Desember 1958	1605163112580004	1996	1619
0168	Sutarno	GADING MULYA D	19,530	280	Ngawi, 09 Mei 1969	1605160905690002	1996	1593
Jumlah			78,230					

NO	NAMA	KELOMPK TANI	LUAS LAHAN (M <sup>2</sup> )	JUMLAH POKOK	TTL	NIK	TAHUN TANAM	NOMOR SERTIPIKA T
<b>KELOMPOK SANTOSO</b>								
0169	Fatchurrohman	Sentosa	20,050	280	Jatim, 10 Oktober 1962	1605161010620005	1996	1761
0170	Prastyono	Sentosa	20,050	280	Magetan, 13 Januari 1983	1605161301830003	1996	1760
0171	M Zeni Riwayatno	Sentosa	20,050	280	Blitar, 09 Januari 1969	1605160901690003	1996	1759
0172	Anwar Sanusi	Sentosa	20,050	280	Tambah Asri, 13 Juli 1981	1605161307810001	1996	1758
0173	Anwar Sanusi	Sentosa	20,050	280	Tambah Asri, 13 Juli 1981	1605161307810001	1996	1867
0174	Sutarman	Sentosa	20,050	280	Ngawi, 13 September 1977	1605161309770001	1996	1866
0175	Hadi Sukiran	Sentosa	20,050	280	Madiun, 03 September 1945	1605160309450002	1996	1865
0176	Erna Ningsih	Sentosa	19,275	280	Magetan, 12 Mei 1980	1605161205800003	1996	1764
0177	Suprianto	Sentosa	19,275	280	Mojokerto, 30 April 1977	1605163004770002	1996	1765
0178	Kemis	Sentosa	19,275	280	Magetan, 01 Juli 1950	1605160107500025	1996	1763
0179	Sarmin	Sentosa	20,050	280	Magetan, 21 Maret 1967	1605162103670002	1996	1762
Jumlah			218,225	3080				

NO	NAMA	KELOMPK TANI	LUAS LAHAN (M <sup>2</sup> )	JUMLAH POKOK	TTL	NIK	TAHUN TANAM	NOMOR SERTIPIKA T
<b>Kelompok Gading Mulya A</b>								
0180	Sutrisno	GADING MULYA A	19,200	280	Ngawi, 14 April 1970	1605161404700003	1996	1667
0181	Sutrisno	GADING MULYA A	19,200	280	Ngawi, 14 April 1970	1605161404700003	1996	1662
0182	Sutrisno	GADING MULYA A	19,970	280	Ngawi, 14 April 1970	1605161404700003	1996	1688
0183	Sutrisno	GADING MULYA A	19,200	280	Ngawi, 14 April 1970	1605161404700003	1996	1647
0184	Sutrisno	GADING MULYA A	19,200	280	Ngawi, 14 April 1970	1605161404700003	1996	1648
0185	Darmo Simin	GADING MULYA A	19,530	280	Ngawi, 11 Juni 1959	1605161106590001	1996	1618
0186	Sutrisno	GADING MULYA A	19,790	280	Ngawi, 14 April 1970	1605161404700003	1996	1997

# RSPO Certification Assessment Report

## KUD Karya Mulya



Bumi Makmur , Nibung Sub district, Musi Rawas District, South Sumatera Province,  
Indonesia

Page 75 of 75

NO	NAMA	KELOMPK TANI	LUAS LAHAN (M2)	JUMLAH POKOK	TTL	NIK	TAHUN TANAM	NOMOR SERTIFIKA T
<b>KELOMPOK TANI SRI REJEKI B</b>								
0190	Wiwit Lestari	SRI REJEKI B	20050	280	Sragen, 14 Juni 1986	1605161406860006	1996	1728
0191	Misni Wibowo	SRI REJEKI B	19275	280	Magetan, 10 November 1986	1605161011860005	1996	1733
0192	Jumirah	SRI REJEKI B	20560	280	Sragen, 17 Mei 1963	1605161705630003	1996	1798
0193	Saimin	SRI REJEKI B	20560	280	Sragen, 12 Agustus 1955	1605161208550002	1996	1776
Jumlah			80445					