

# Internal Hotspot Monitoring Weekly Report for 2023

**Week 2 – August 2023**

07 August – 13 August 2023  
*Malaysia & Indonesia*



# Overview



1. P&C 2018 & RSPO ISH Standard 2019 – Related Criteria
2. Weekly Analysis
  - i. Comparison to 2022: All Hotspots in MY & ID
  - ii. Comparison to 2022: Hotspots within RSPO Member Concession
  - iii. Weekly trend from the last 10 weeks
3. Weekly Hotspot Map
  - i. Hotspot Distribution Map
  - ii. Hotspot Distribution by Peatlands and Landuse Map
  - iii. Hotspot Persistency Map
4. Hotspots for Week 2 - August 2023
  - i. RSPO vs. non-RSPO member comparison
  - ii. Hotspots Distribution by States/Region
  - iii. Hotspots in RSPO members (State/Province)
5. ASEAN Weather Outlook

# RSPO Principles & Criteria 2018

## Related Criteria

There is **no use of fire for pest control** unless in exceptional circumstances

7.1.3

Criteria 7.1

The unit of certification **does not use open fire for waste disposal.**

7.3.3

Criteria 7.3

The unit of certification **establishes fire prevention and control measures** for the areas directly managed by the unit of certification

7.11.2

Criteria 7.11

# RSPO ISH Standard 2019

## Related Criteria

Smallholders complete training on best management practices (BMPs) for peat. The group has an **action plan to minimise risk of fire**, to apply BMPs for planting on peat and manage water systems in the certification unit.

4.4 MSA

Criteria 4.4

Smallholders **implement** the group's **action plan based on BMPs**, including **fire** and water management, and monitoring of subsidence rate for existing planting on peat.

4.4 MSA

Criteria 4.4

**Fire is not used** on the oil palm plot **for preparing land** or for **pest control**, nor open fire for **waste management** on the farm.

4.6 E,  
4.6 MSA,  
4.6 MSB

Criteria 4.6



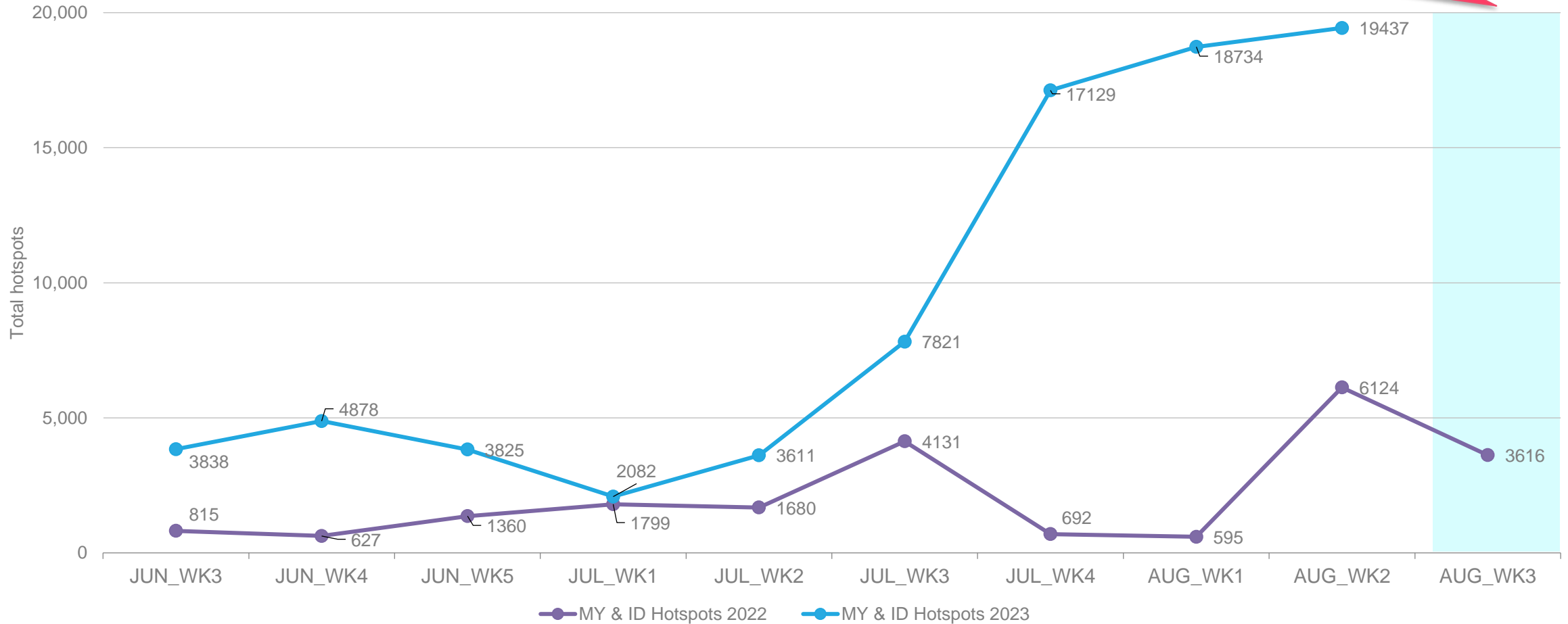
# Weekly Analysis

Comparison to 2022 trend  
Comparison to previous 10 weeks

# Comparison to 2022: All hotspots



The number of hotspots for next week (August 2023: week 3) is predicted to be **increase** in the region as forecasted

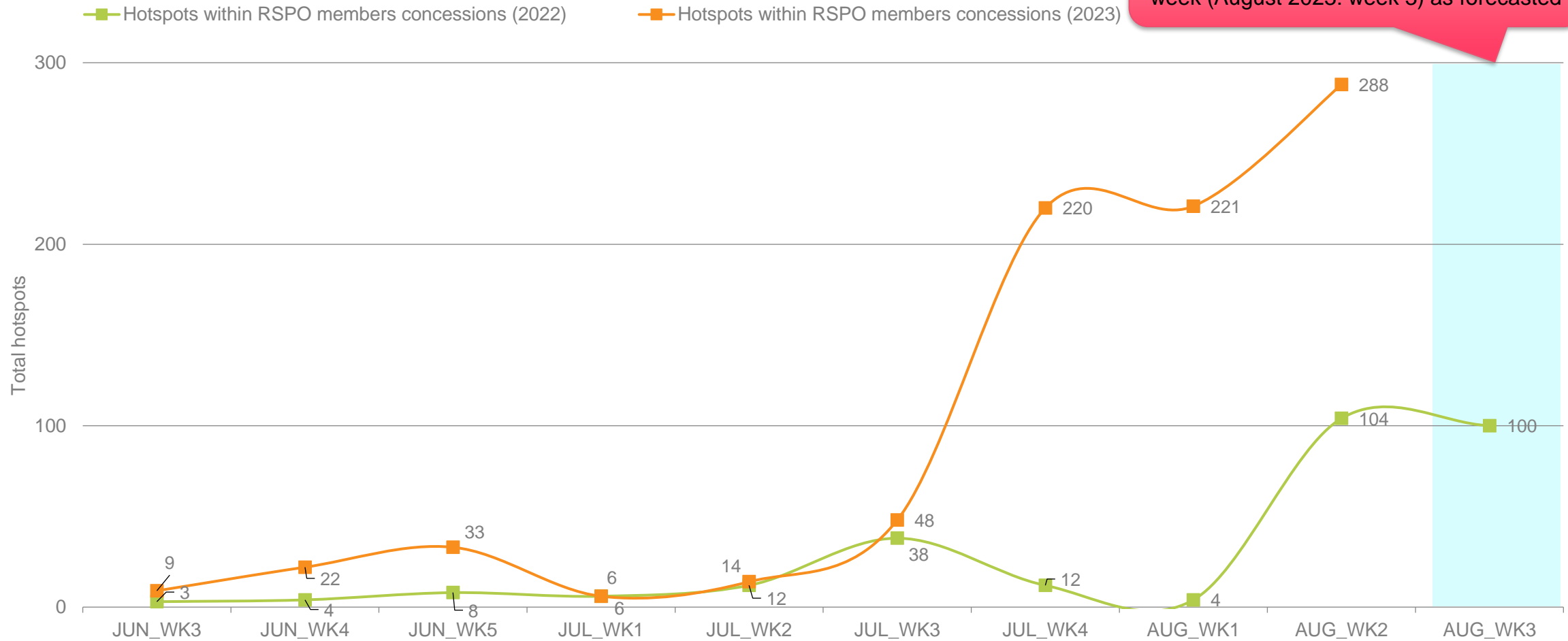


07 August 2023 – 13 August 2023

# Comparison to 2022: Hotspot within RSPO Members Concessions



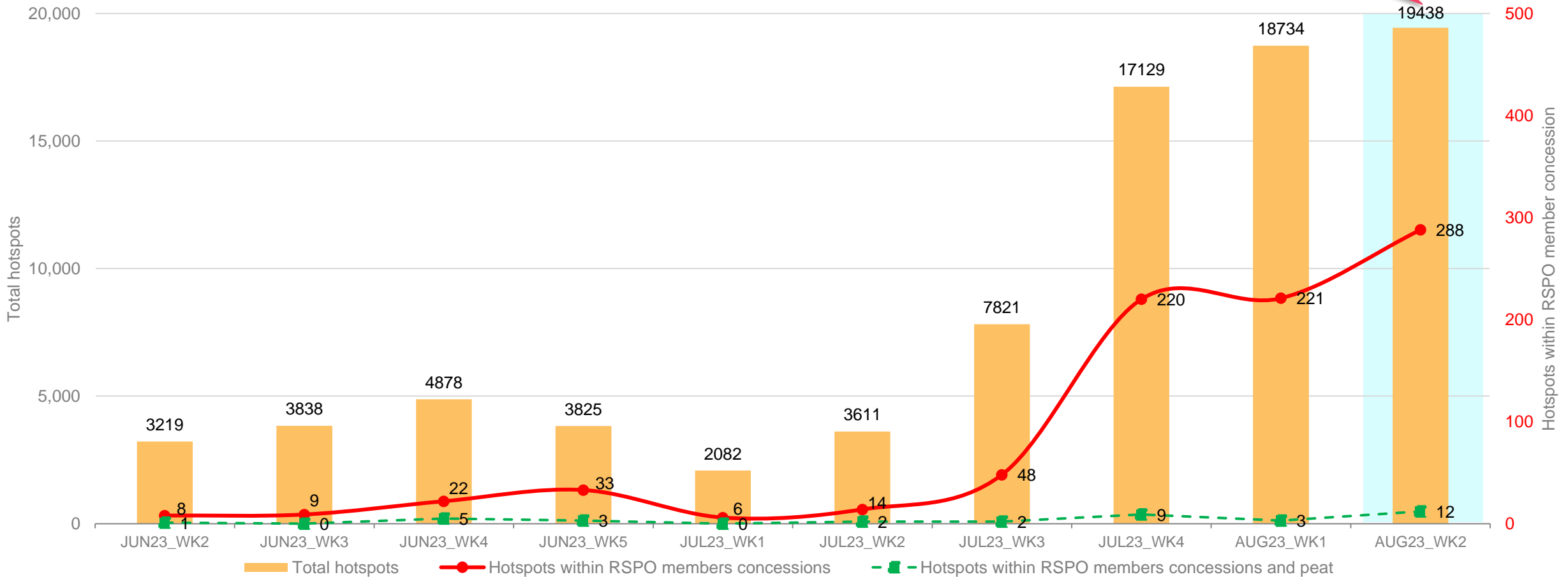
The number of hotspots within RSPO member is expected to be **higher** for next week (August 2023: week 3) as forecasted



# Weekly trend from last 10 weeks



Higher in hotspot count than previous week



07 August 2023 – 13 August 2023



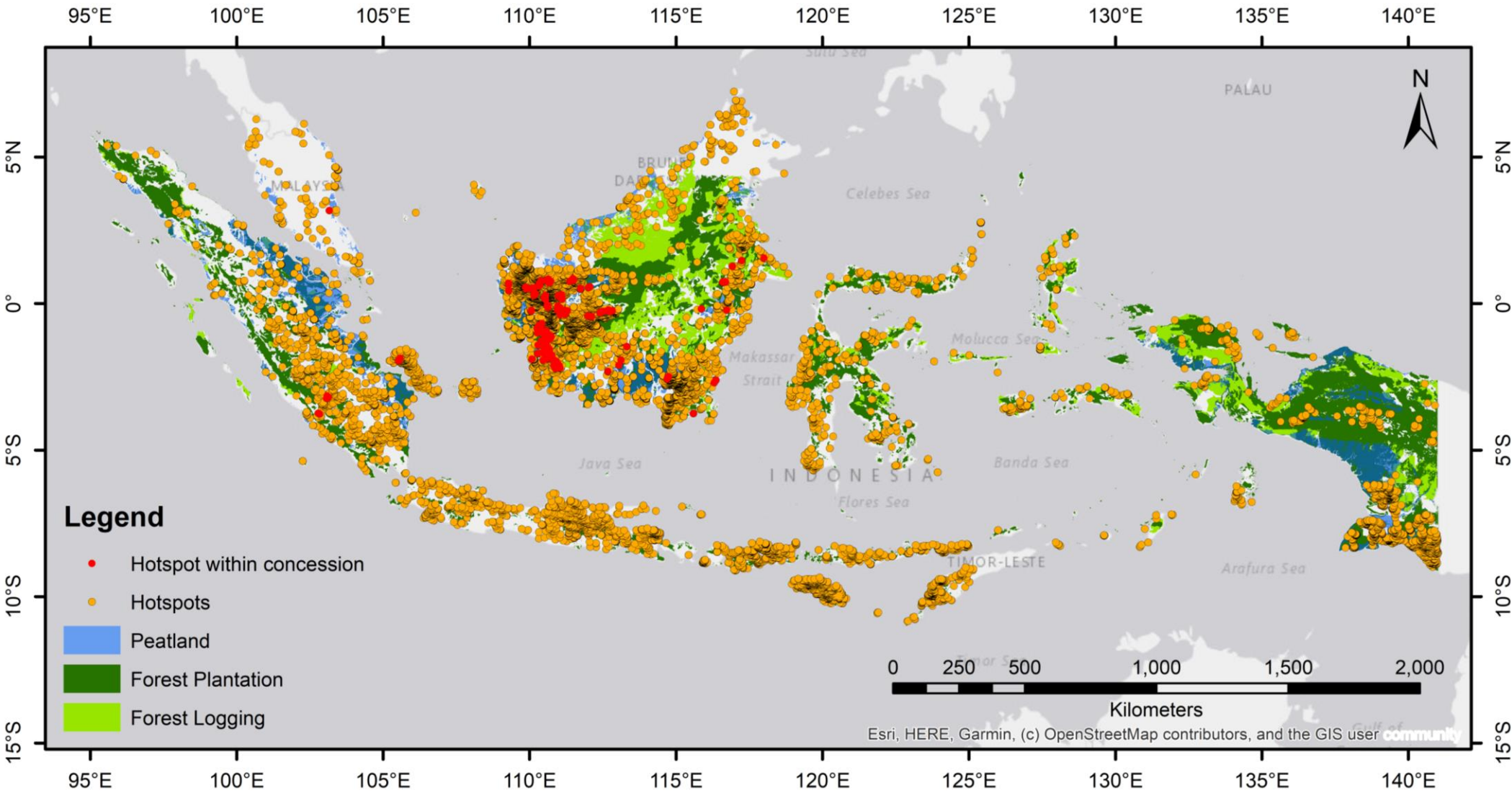


# Weekly Hotspot Map

Malaysia & Indonesia



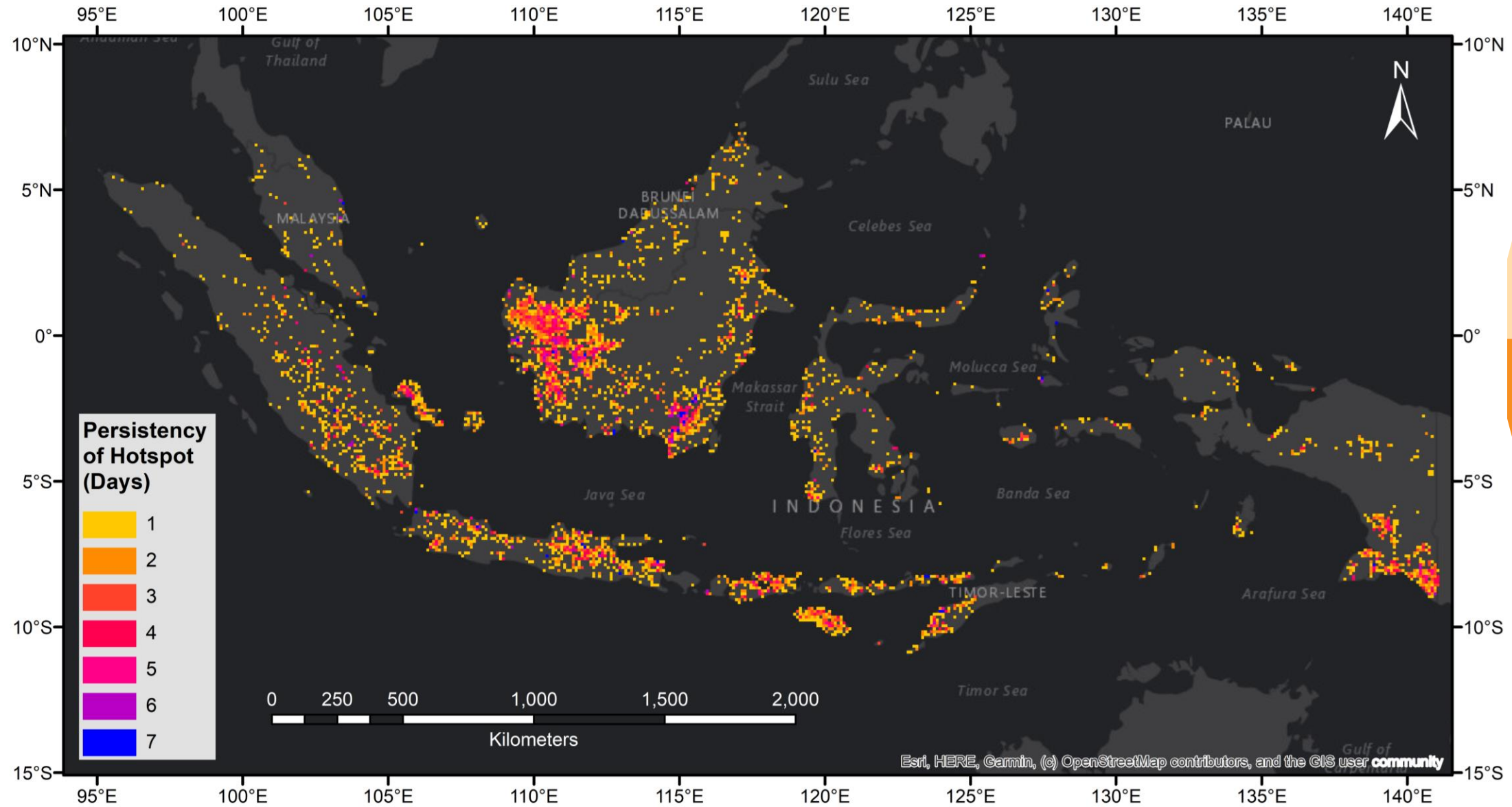
## Hotspot Distribution by Peatland & Landuse Map



DATA	SOURCE
Hotspots	NASA FIRMS ( <a href="https://firms.modaps.eosdis.nasa.gov/active_fire">https://firms.modaps.eosdis.nasa.gov/active_fire</a> )
Peatland	World Resources Institute. "Peat lands". Accessed through Global Forest Watch on 17/11/2022. <a href="http://www.globalforestwatch.org">www.globalforestwatch.org</a>
Forest Plantation	"Wood fibre concessions." Accessed through Global Forest Watch on 17/11/2022. <a href="http://www.globalforestwatch.org">www.globalforestwatch.org</a>
Forest Logging	"Managed forest concessions." Accessed through Global Forest Watch on 17/11/2022. <a href="http://www.globalforestwatch.org">www.globalforestwatch.org</a>



# Hotspot Persistency Map



Each grid represents the number of days hotspots were detected within the 10km X 10km grid between 07 August 2023 – 13 August 2023

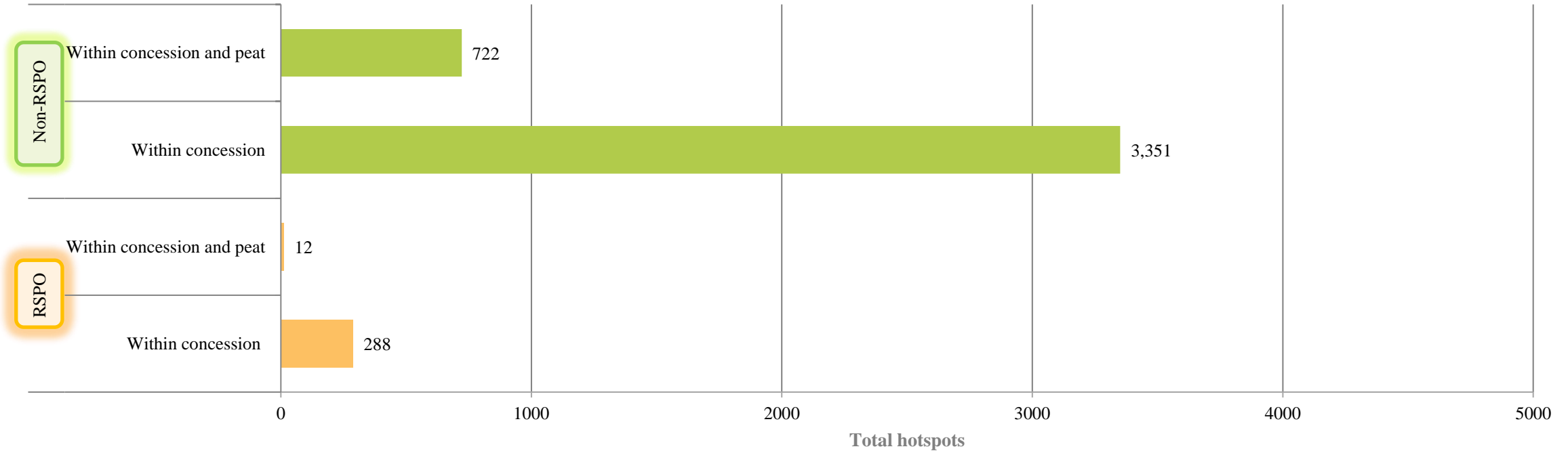
07 August 2023 – 13 August 2023



# **Week 2 - August 2023 Hotspot**

**Malaysia & Indonesia**

# RSPO vs non-RSPO comparison



Non-RSPO oil palm concession location data was derived from oil palm concessions dataset accessed through Global Forest Watch on 17/11/2022. [www.globalforestwatch.org](http://www.globalforestwatch.org). The website states that this layer is a compilation of concession data from various countries and sources. The quality of these data can vary depending on the source. This layer may not include all existing concessions in a country, and the location of certain concessions can be inaccurate.

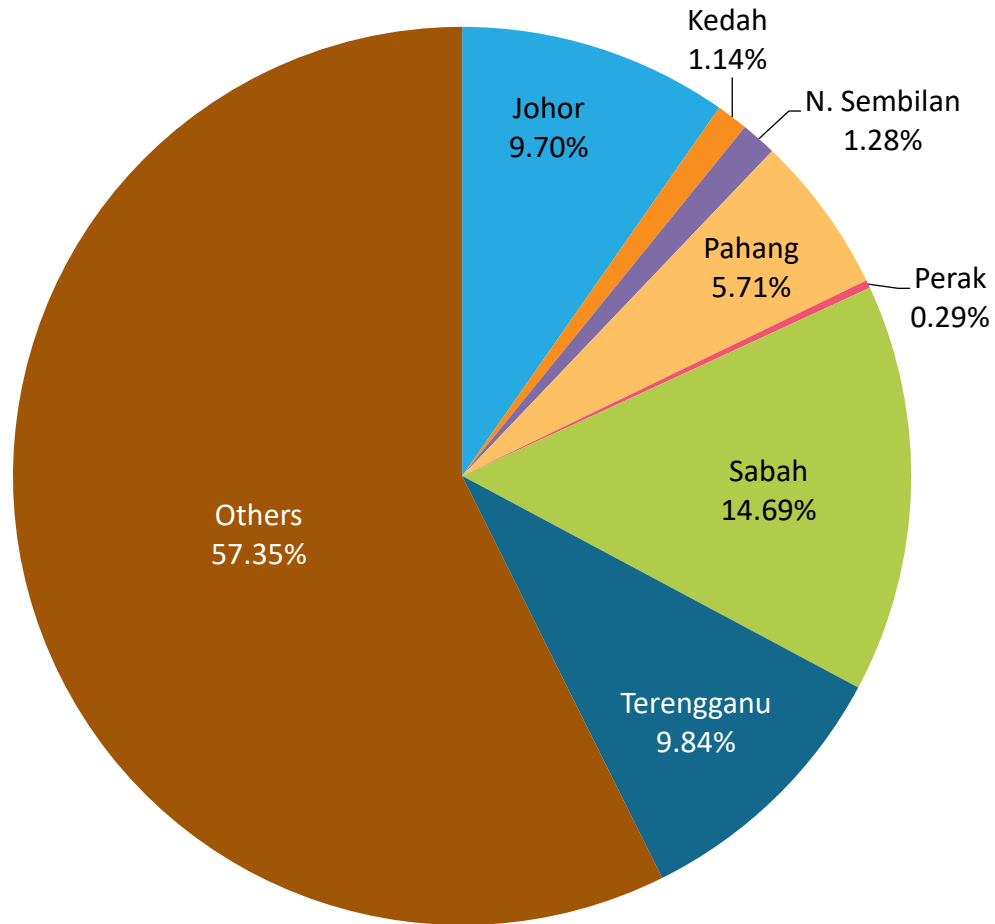
As such the data probably overstates the extent of oil palm plantations in some cases, as there are many licenses granted and the oil palm plantation has not been developed. In other cases, it may understate the extent of plantations as it does not take into account smallholders. Nevertheless, this appears to be the best data available of ALL oil palm in Indonesia.

The RSPO concession boundary data was overlaid with this data in the GIS and RSPO concessions were “clipped” out of this data, leaving only “non-RSPO” concessions.

Non-RSPO\*: ~19,000,000 ha

RSPO: ~ 4,800,000 ha

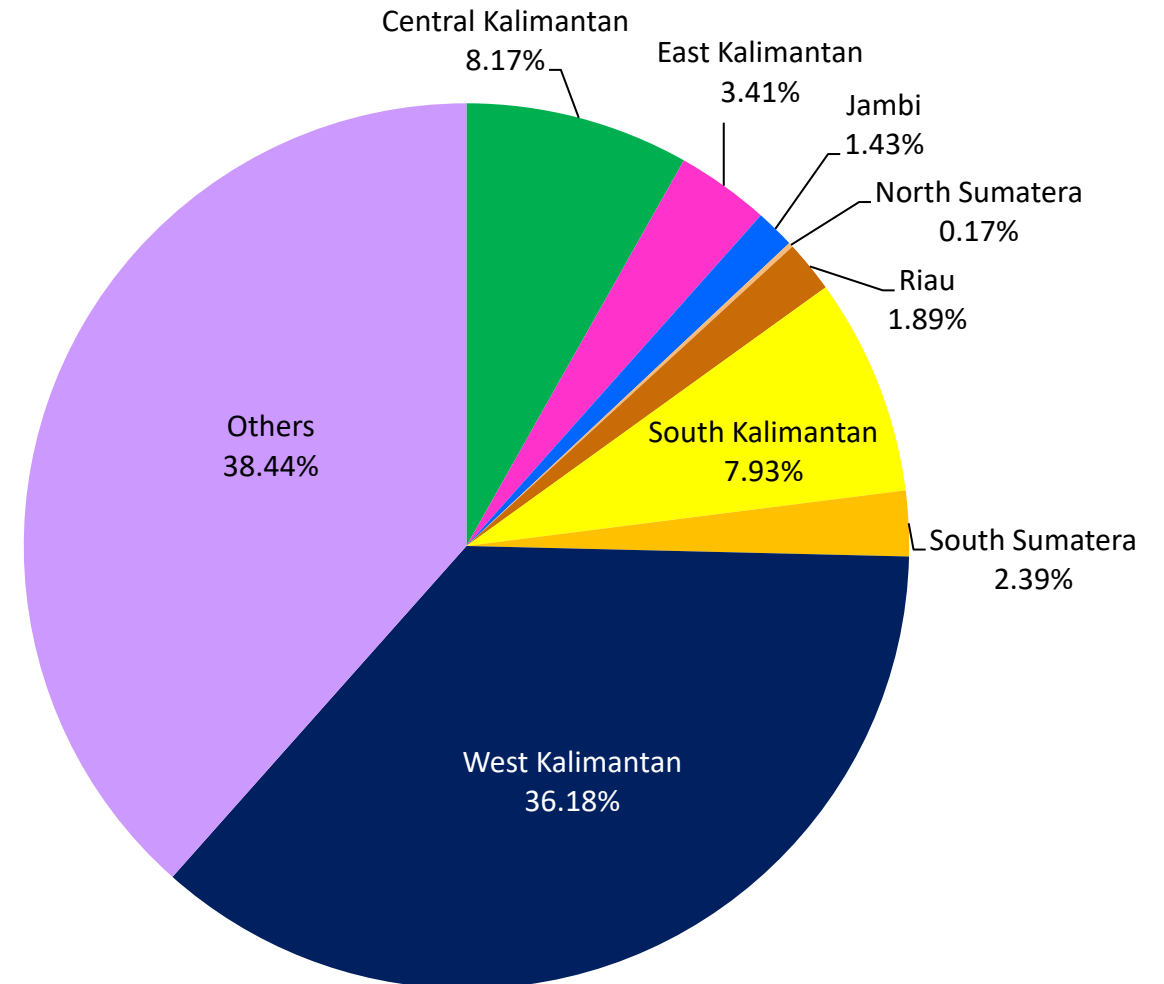
# Distribution of Hotspots by State in Malaysia



STATE	TOTAL
Johor	68
Kedah	8
N. Sembilan	9
Pahang	40
Perak	2
Sabah	103
Terengganu	69
Others	402
<b>Total</b>	<b>701</b>

# Distribution of Hotspots by Region in Indonesia

REGION	TOTAL
Central Kalimantan	1531
East Kalimantan	638
Jambi	268
North Sumatera	32
Riau	354
South Kalimantan	1485
South Sumatera	447
West Kalimantan	6779
Others	7,202
<b>Total</b>	<b>18,736</b>



# Hotspots in RSPO members (State/Province)



No. of Member/s	Date of Acquisition	District / Regency	State / Province	Country	No. of Hotspots	Total no. of Hotspots
1	7-Aug-23	Ketapang	West Kalimantan	Indonesia	4	41
	8-Aug-23	East Kotawaringin	Central Kalimantan		1	
	9-Aug-23	Ketapang	West Kalimantan		2	
	10-Aug-23				5	
	11-Aug-23				7	
	12-Aug-23	East Kotawaringin	Central Kalimantan		6	
	13-Aug-23	Ketapang	West Kalimantan		1	
	13-Aug-23	East Kotawaringin	Central Kalimantan		6	
13-Aug-23	Ketapang	West Kalimantan	1			
1	10-Aug-23	Bebar	Pahang	Malaysia	8	1
1	7-Aug-23	Ketapang	West Kalimantan	Indonesia	1	49
	8-Aug-23	Sanggau			11	
		Ketapang			4	
	9-Aug-23	Sanggau			3	
		Ketapang			3	
	10-Aug-23	Sanggau			4	
		Ketapang			4	
		North Kayong			1	
	11-Aug-23	Sanggau			1	
	12-Aug-23	Ketapang			1	
		Sanggau			4	
13-Aug-23	Ketapang	2				
	Sanggau	2				
1	7-Aug-23	Ketapang	West Kalimantan	Indonesia	1	25
	7-Aug-23	Sintang			3	
	8-Aug-23	Kapuas	Central Kalimantan		1	
	9-Aug-23	Sintang	West Kalimantan		1	
	10-Aug-23	Kapuas	Central Kalimantan		6	
		Ketapang	West Kalimantan		3	
	11-Aug-23	Kapuas	Central Kalimantan		1	
	12-Aug-23	Kapuas	Central Kalimantan		2	
		Ketapang	West Kalimantan		1	
	13-Aug-23	Kapuas	Central Kalimantan		1	
Ketapang		West Kalimantan	2			
Sanggau		West Kalimantan	2			
1	7-Aug-23	Ketapang	West Kalimantan	Indonesia	1	1



# Hotspots in RSPO members (State/Province)



No. of Member/s	Date of Acquisition	District / Regency	State / Province	Country	No. of Hotspots	Total no. of Hotspots
1	7-Aug-23	Ketapang	West Kalimantan	Indonesia	3	41
	8-Aug-23	Sintang			2	
	9-Aug-23	Ketapang			2	
		Sintang			6	
	10-Aug-23	Ketapang			1	
		Sintang			8	
	12-Aug-23	Ketapang			1	
	13-Aug-23	Ketapang			1	
Sintang		10				
1	7-Aug-23	Kutai Kartanegara	East Kalimantan	Indonesia	1	4
	10-Aug-23	Musi Rawas	South Sumatra		1	
	11-Aug-23		2			
1	7-Aug-23	Sintang	West Kalimantan	Indonesia	5	22
		Sekadau			3	
	8-Aug-23	Sintang			2	
		Sekadau			3	
	9-Aug-23	Sintang			4	
		East Kutai			East Kalimantan	
	10-Aug-23	Sintang			West Kalimantan	
Sekadau		2				
1	7-Aug-23	Melawi	West Kalimantan	Indonesia	2	15
	8-Aug-23	Kotabaru	South Kalimantan		1	
		Melawi	West Kalimantan		1	
	10-Aug-23	Ketapang	West Kalimantan		3	
	11-Aug-23	Kotabaru	South Kalimantan		1	
					2	
	12-Aug-23	Ketapang	West Kalimantan		3	
13-Aug-23			2			
1	7-Aug-23	Sekadau	West Kalimantan	Indonesia	1	12
	8-Aug-23				3	
	9-Aug-23				2	
	10-Aug-23				4	
	13-Aug-23				2	

# Hotspots in RSPO members (State/Province)



No. of Member/s	Date of Acquisition	District / Regency	State / Province	Country	No. of Hotspots	Total no. of Hotspots	
1 PT Triputra P	7-Aug-23	West Kutai	East Kalimantan	Indonesia	1	6	
	8-Aug-23	Berau			1		
	10-Aug-23	East Kutai			1		
	13-Aug-23				2		
					1		
1 Sime D	7-Aug-23	Sanggau	West Kalimantan	Indonesia	3	6	
	8-Aug-23	Tanah Bumbu	South Kalimantan	1			
	9-Aug-23	Sanggau	West Kalimantan	1			
	10-Aug-23			1			
1 Wilmar	7-Aug-23	Sanggau	West Kalimantan	Indonesia	3	13	
		Landak			3		
	8-Aug-23	Sanggau			1		
	10-Aug-23	Landak			2		
		Sanggau			2		
		Landak			1		
1 GAR	8-Aug-23	Kapuas Hulu	West Kalimantan	Indonesia	1	17	
	9-Aug-23	Ketapang			1		
	10-Aug-23	Kapuas Hulu			2		
		Ketapang			3		
	11-Aug-23	West Bangka			Bangka Belitung Islands		4
	12-Aug-23	Ketapang			West Kalimantan		1
	13-Aug-23	West Bangka			Bangka Belitung Islands		2
							2
1 Musim Mas	8-Aug-23	Ketapang	West Kalimantan	Indonesia	1	28	
	9-Aug-23				2		
	10-Aug-23				5		
	11-Aug-23				7		
	12-Aug-23				6		
					6		
	13-Aug-23				East Kotawaringin		Central Kalimantan
1 PT ANJA	9-Aug-23	Empat Lawang	South Sumatra	Indonesia	2	2	
1 PT Cipta US	10-Aug-23	North Kayong	West Kalimantan	Indonesia	1	1	
1 PT Hilton DL	12-Aug-23	Landak	West Kalimantan	Indonesia	2	3	
	13-Aug-23				1		
1 TSH	12-Aug-23	Katingan	Central Kalimantan	Indonesia	1	1	
<b>19</b>				<b>Total Hotspots</b>		<b>288</b>	

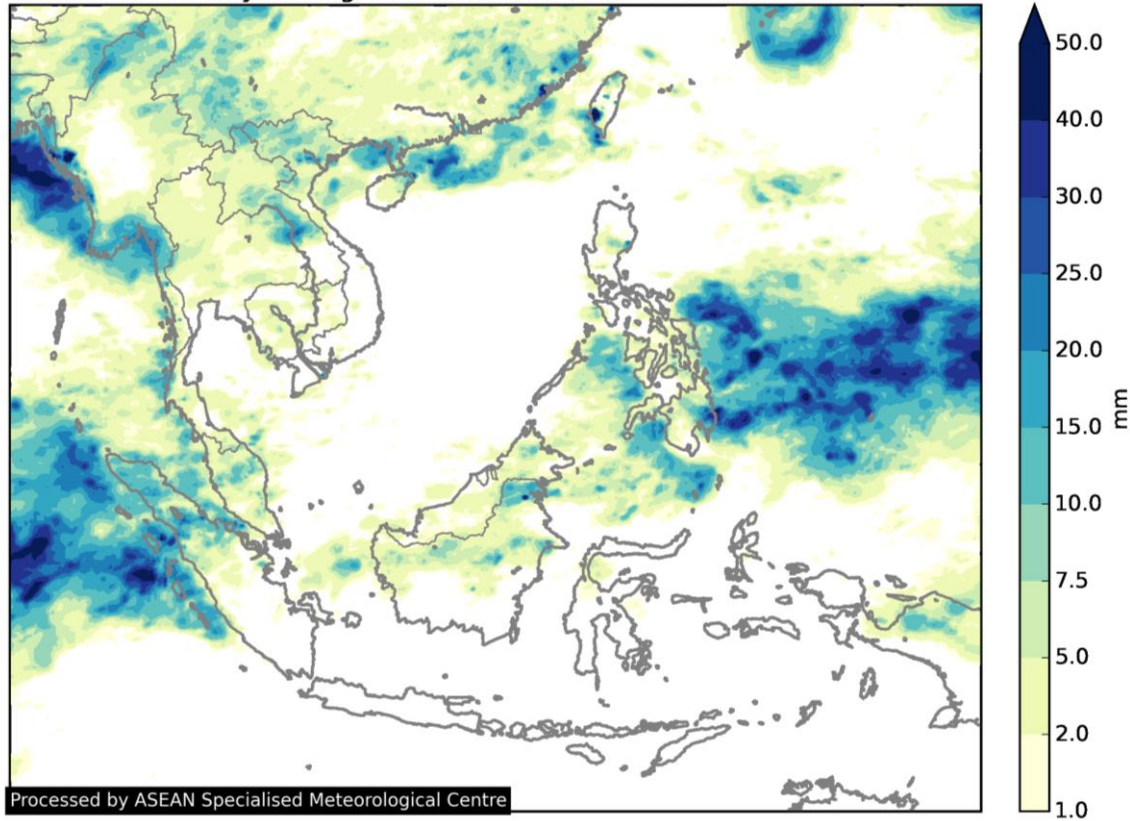


# ASEAN Weather Outlook

*Source: The ASEAN Specialised Meteorological Centre*

# Regional Weather & Haze Outlook

GsMaP Daily Average Rainfall from 2023-08-07 to 2023-08-13



## Alert Level

- LEVEL 0** Stay vigilant.
- LEVEL 1** Dry season for the Southern ASEAN region.
- LEVEL 2** Increasing risk of transboundary haze in Kalimantan. Escalating hotspot activities with moderate to dense smoke haze observed over 2 or more consecutive days; dry weather persisting; and prevailing winds blowing smoke haze from the hotspots towards neighbouring ASEAN countries.
- LEVEL 3** High risk of severe transboundary haze in the region. Significant and persistent hotspot activities with widespread moderate to dense smoke haze observed over 2 or more consecutive days; dry weather persisting; and prevailing winds blowing towards ASEAN countries.

In recent days, prevailing dry weather conditions over the southern ASEAN region have resulted in an escalation in hotspot and smoke haze activities. Based on satellite surveillance, moderate smoke haze was observed to emanate from clusters of hotspots detected in the western and southern parts of Kalimantan. Transboundary haze was observed to drift northwards from the hotspot clusters in West Kalimantan into western Sarawak in East Malaysia.

The prevailing dry weather conditions are forecast to continue over Kalimantan in the coming days, with the prevailing winds likely to blow from the southeast or southwest. Under these conditions, the hotspot and smoke haze situation could worsen with an increased risk of transboundary smoke haze occurrence.

07 August 2023 – 13 August 2023

Drier conditions were observed over most parts of the southern ASEAN region, apart from some isolated showers over northern Sumatra, northern Peninsular Malaysia and northern Borneo. Elsewhere in the ASEAN region, isolated to scattered shower activities prevailed. Moderate smoke haze was observed to emanate from several hotspot clusters detected in western, southern, and southeastern Kalimantan which been blown by the prevailing winds towards Sarawak.

In the coming days, **dry weather** is expected to persist over parts of **southern Sumatra**, southern, western and central **Kalimantan**, as well as **Java** and the **Lesser Sunda Islands**. There is **some risk of transboundary haze** over the bordering regions of **western Kalimantan and Sarawak**. Showers are forecast for the rest of the ASEAN region where the hotspot activity is likely to remain subdued.

# Alert by RSPO: Transboundary Haze (Level 2)

For the following week, RSPO Secretariat would like to recommend the following measures to Members:



## Dry Season Area

(Many parts of Southern ASEAN Region; especially at some parts of Borneo, Sumatra, Kalimantan, Java & Lesser Sunda Islands)

- Please alert to the Fire Danger Rating System (FDRS) indicator board especially in the fire prone area
- Supply appropriate well-maintained fire mitigation tools (fire extinguisher, fire truck)
- Establish of fire break (wide road, vacant land) within the planted area
- Inform workers and communities about the fire drill procedure
- Minimize outdoor activities and stay hydrated if the haze season occurred
- If haze occurred, wear respirator mask if outdoor activities is necessary.



Integrated Fire Management Training conducted by PT Austindo PT Austindo Nusantara Jaya Agri

## Wet Weather Area

(as forecast for over Northern ASEAN region)

- High risk of surface runoff in the estate area which may result in erosion and landslide
- Stay vigilant of water level and keep informed on local news of the flood in high-risk area
- Tendency for the formation of road potholes, which may necessitate additional maintenance and repair costs.
- Stay inside during thunderstorms and blizzards. Stay off the landline phone and computer during a storm.
- Wear appropriate rain gear for employees working in the rain

Background image: Fire fighting in action conducted by Daabon Group



**Find out more at**  
**[www.rspo.org](http://www.rspo.org)**