

MINUTES OF MEETING

Independent Smallholder – No Deforestation Task Force (IS-NDTF) – 4th Meeting

Time : 1930- 2130 (MYT)

Date : Wednesday, 21 October 2020

Venue : ZOOM Conference Call

Attendees:

	Name	Initial	Organisation	Representation Category
1.	Henriette Walz	HW	Rainforest Alliance	SNGO – Substantive (Co-Chair)
2.	Daniel Uricoechea	DU	Oilsum Group	Smallholder (LATAM) (Co-Chair)
3.	Paula den Hartog	PH	Rainforest Alliance	SNGO – Alternate
4.	Lesly Vera Gonzales	LV	Solidaridad Network	SNGO– Substantive
5.	Dani Rahadian Hidayat	DH	FORTASBI	Smallholder (Indonesia)
6.	J. Cyrus Saygbe	CS	Solidaridad Network	Smallholder (Africa)
7.	Chrissy Durkin	CD	Rainforest Connection	ENGO
8.	Angga Prathama Putra	APP	WWF	ENGO
9.	Burhanuddin Ismail	BI	Bunge Loders Croklaan	P&T
10.	Rob Nicholls	RN	PT. Musim Mas	P&T
11.	Olivia Scholtz	OS	HCVRN	Technical Expert
12.	Sheun Su Sin	SSS	HCSA	Technical Expert
13.	Happy Devyanto	HD	SPKS (Representing HCSA)	Technical Expert
14.	Ashwin Selvaraj	AS	RSPO Secretariat	
15.	Krishna Jeyabalan	KJ	RSPO Secretariat	
16.	Tamanjong Victor Yuh	TV	RSPO Secretariat	
17.	Amir Afham	AA	RSPO Secretariat	

Absent with apologies:

	Name	Initial	Organisation	Representation Category
1.	Nizar Wicaksono	NW	RSPO Secretariat	
2.	Diego Pierrend	DP	RSPO Secretariat	

Agenda:

Time	Item no	
7:30 – 7:40 pm	1.0	Introductions
7:40 – 7:50 pm	2.0	Recap on: <ul style="list-style-type: none"> • Comparison of Simplified HCV Approach & HCSA Toolkit • Recommendations for Simplified Combined HCV-HCS Approach for ISH

7:50– 8:05 pm	3.0	Amended Guiding Principles
8:05– 8:20 pm	4.0	Reflections on recommendations presented during 3rd IS-NDTF Meeting
8:20 – 8:35 pm	5.0	Concept of Risk Based Approach
8:35 – 9:20 pm	6.0	<p>Draft Proposal - Simplified Combined HCV-HCS Approach</p> <ul style="list-style-type: none"> • Proposed Simplified Combined HCV-HCS Approach – Existing Planting <ul style="list-style-type: none"> ○ Similarities & Differences to Independent Consultant Suggestion ○ Discussion / Reflection • Proposed Simplified Combined HCV-HCS Approach – New Planting <ul style="list-style-type: none"> ○ Similarities & Differences to Independent Consultant Suggestion ○ Discussion / Reflection
9:20 – 9:30 pm	7.0	AOB
		Meeting adjourned

Updates on Action Points from last meeting:

No.	Action Point	Status
1	To amend Guiding Principles based on feedback. To be presented in the next meeting (3 rd IS-NDTF Meeting).	Amendments accepted. Additional changes were proposed in this meeting (4 th IS-NDTF Meeting)
2	Follow up by HCSA representative on availability of technical representative	Representative from SPKS joined the meeting as a technical representative on behalf of HCSA

No.	Description	Action Points (PIC)	Progress / Remarks
1.0 Introduction			
	<p>The co-chair (DU) welcomed all attending members and technical experts.</p> <p>Lesly Vera (Solidaridad Peru) was introduced as the newest member representing SNGO.</p> <p>The agenda was presented.</p>		

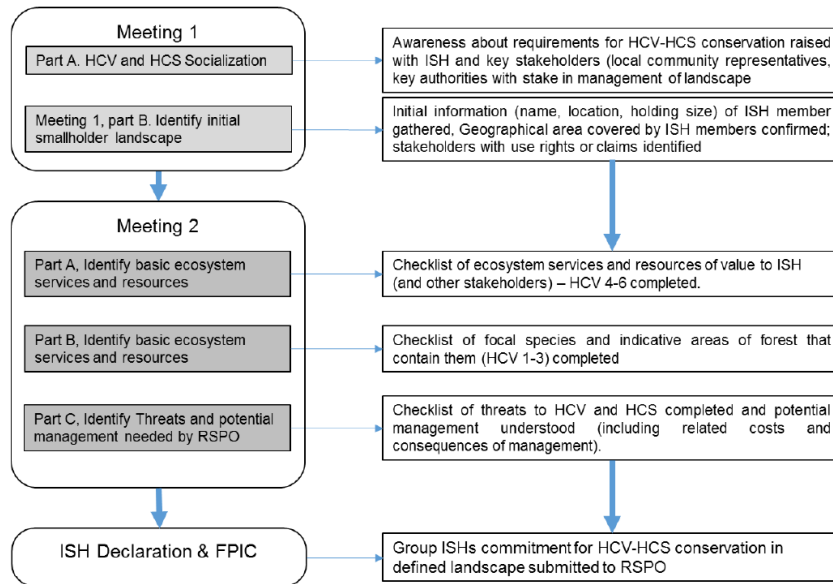
2.0 Recap

The presentation started with a recap on the Comparison of Simplified HCV Approach & HCSA Toolkit, covering:

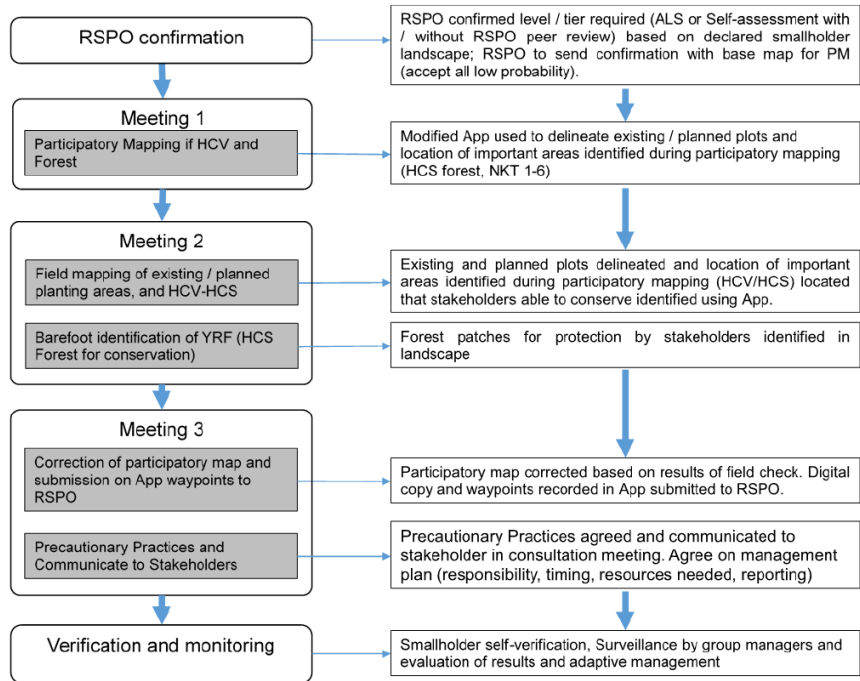
1. General comparison
2. Strengths
3. Potential risks
4. Limitations
5. Opportunities for adaptation

A short brief was also presented on the recommendations for Simplified Combined HCV-HCS Approach for ISH by PT Ekologika (Independent Consultant)

Phase 1: Smallholder Declaration / FPIC for the approach



Phase 2: Simplified Combined HCV-HCS Approach



3.0 Amended Guiding Principles

Amended guiding principles was presented based on inputs received from members of the task force during the previous meeting. A total of 4 guiding principles was presented (Addition of **one**).

1. Core Sustainability Requirements Are Maintained

- The approach must ensure an adequate level of rigor and not compromise compliance with core sustainability requirements, such as those expressed in NDPE commitments. The approach shall also address potential risks as well as safeguards.

2. The Assessment Process Is Tailored For an ISH Group Member / GM

- To address the cost and complexity of the existing combined HCV-HCS Assessment through the development of an approach that is tailored to the ISH context. It should be feasible in all contexts globally and work offline.

3. Independently Carried out by ISH Group

- The approach should allow for an ISH GM or Member to use it without prior extensive technical knowledge on HCV and HCS as per the methodology employed by the Simplified HCV Approach.

To be Amended:

Guiding Principle 1: The replacement of the term “NDPE commitments” in with sustainability requirements or Criteria from the ISH Standard.

Guiding Principle 2: Combined HCV-HCS Assessment to be replaced with “Integrated HCV-HCSA Assessment”

	<ul style="list-style-type: none"> An ISH GM or Member may be required to consult for additional material from RSPO. In high risk cases, an assessment by an external technical expert may be required. <p>4. Aligned with smallholder strategy (inclusive, step-wise)</p> <ul style="list-style-type: none"> The approach should be aligned with the RSPO smallholder strategy and the Independent Smallholder Standard aimed at smallholder inclusion and addresses the stepwise approach towards full compliance. 	<p>Guiding Principle 4: The term “addresses” to be removed.</p>	
--	---	--	--

4.0 Reflections on recommendations presented during 3rd IS-NDTF Meeting

	<p>The initial thoughts on the recommendation for a Simplified Combined HCV-HCS Approach for ISH are as listed:</p> <ul style="list-style-type: none"> The process is very thorough and well-presented and is simple in the sense that it uses the same procedure for existing and new planting. More simplification is possible as the potential for the process to be burdensome for ISH is high. Process requires quite a bit of capacity building. It would make sense to use the probability map for medium risk to high risk new planting only and not use it for existing and low risk new planting. Process needs to be clearer on which part addresses the designation of HCS as it can also be included in low risk areas. <p>The general consensus of the task force: Phase 2 of the proposal requires fine tuning to address the concern of simplicity and unnecessary process put on the ISH.</p>		
--	---	--	--

5.0 Concept of Risk Based Approach

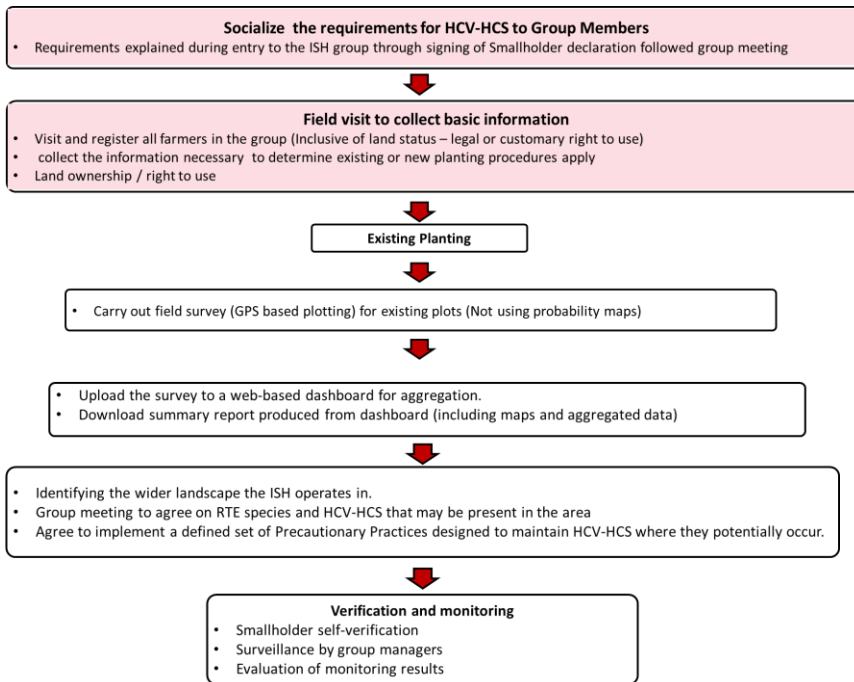
	<p>Concept of Risk Based Approach was introduced to the task force members based on the process flow as shown:</p> <pre> graph LR A[Establish Context Existing or New Plots] --> B[Identify Risk (New Planting) Map the Plots using App] B --> C[Evaluate Risk Probability map / Survey informs of risk level] C --> D[Treat Risk Measures taken based on risk level based on context] D --> E[Monitor & Improve where required] </pre> <p>Benefits of a risk-based approach was presented:</p> <ul style="list-style-type: none"> External expertise not required to identify risk level at the start. The basis for technical knowledge come from the guiding materials/trainings 		
--	---	--	--

- GM led participatory process using probability maps and site level information to determine the risk.
- Basis for recourse to external expertise to support the process applies to higher risk areas

6.0 Draft Proposal - Simplified Combined HCV-HCS Approach

The proposal from the RSPO Secretariat for a Simplified Combined HCV-HCS Approach was presented based on the concept of the risk based approach. Two process was presented (For existing as well as new planting) together with the similarities and differences from the recommendations for Simplified Combined HCV-HCS Approach for ISH by PT Ekologika (Independent Consultant).

Existing Planting



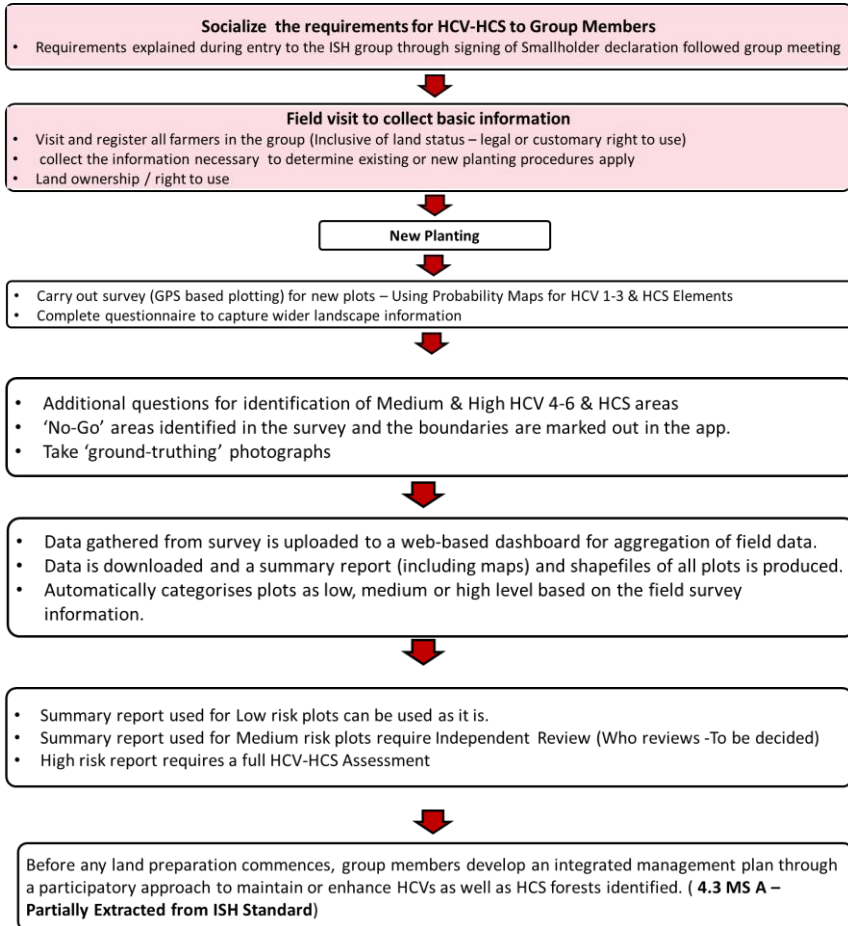
Discussion on the proposal by The RSPO Secretariat:

1. The field survey and the landscape mapping are not in a practical/logical order. It would be ideal to start with landscape mapping so people involved would understand the relevant elements through the outreach as well as understand the impacts. This should then be followed by the plotting.
2. Question was posed on the possibility of the process flow chart adjusted and if it may pose any setbacks towards an ISH. No setbacks are foreseen

The process for Existing planting will be updated to reflect the discussion points.

3. Further discussion was carried out to deliberate the process flow and which elements require changes.

New Planting



Discussion on the proposal by The RSPO Secretariat:

1. For new planting , in the long term, the PT Ekologika recommendation would bring in more benefits in terms of protection by ISH as it is a more participative process compared to having an independent expert coming in to carry out an assessment process. The recommendation involves checks and reviews.
2. For high risk context, would an ALS Integrated HCV-HCS assessment be the best approach or the PT Ekologika recommendation (inclusive of the checks and balances)
3. It was also highlighted that new planting has never been carried out before using the existing Simplified HCV Approach. As such focus needs to be put on having proper guidance.
4. Concern was raised for an integrated ALS Integrated HCV-HCS assessment in terms of time and cost. The process involves

	<p>multiple reviews and adds up to a very high cost even for larger growers.</p> <p>5. An item regarding the use of ground truthing which have been previously carried out by group managers was also raised.</p> <p>6. It was suggested for the FPIC element to be included at the beginning of the process as well.</p>		
<p>7.0 AOB</p>			
	<p>FPIC inclusion was highlighted with a more detailed explanation as not required in the scope of this development of the Simplified Combined HCV-HCS Approach by the task force. This is due to it being an element that is separately addressed within the RSPO ISH Standard.</p>		
<p>Meeting Adjourned</p>			

End of minutes