



RSPO

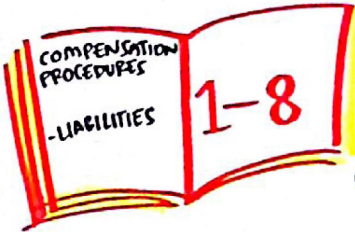
REMEDATION & COMPENSATION PRODUCTS

RELATED TO LAND CLEARANCE

WITHOUT HCV ASSESSMENT...

TO CLARIFY SPECIFIC ISSUES & TO HAVE

CONVERSATIONS!



STEPS



TO AVOID FURTHER NON-COMPLIANT LAND CLEARING

IT'S A PERSPECTIVE!

HOW DO YOU JUSTIFY/DEFINE HIGH CANOPY?

4 CATEGORIES:



IDENTIFICATION AREAS FOR REMEDIATION

AIM TO RESTORE ECOLOGICAL FUNCTIONS

CALCULATION OF CONSERVATION COMPENSATION LIABILITY...

TO DETERMINE THE SCALE OF CONSERVATION PROJECT

MAJORITY SHAREHOLDING?

50% SHARE

OR MANAGEMENT CONTROL!



CONSISTENCY?

EXPELLING MEMBERS?

TRIAL PERIOD

BEFORE NIP INTRODUCED

BEFORE IMPLEMENTATION PERIOD

AFTER MAY 2014

NOV 05 - NOV 07

DEC 07 - DEC 09

JAN 10 - 3 MAY 14

WHAT INFORMATION IS STILL MISSING?

HOW TO STRENGTHEN? ... AND WHY?



NEED MORE ILLUSTRATION!

TOO WORDY → NEED TO BE SIMPLY

CLARIFICATION ON RSPO MEMBER ACQUIRING OTHER MEMBER / NON MEMBER!

HCV COMPENSATION CONCEPT HAVE NOT BEEN APPROVED BY RSPO COMPENSATION PANEL

EXPLANATORY CLAUSES

GRAMMATICAL TYPO

GRANTING OF MEMBERSHIP



LONG PROCESS!

COEFFICIENT → MORE QUALITATIVE JUSTIFICATION!

CHANGE N.A INTO: NO SUCH CATEGORY OF MEMBERSHIP OF THIS PERIOD

ADD NOTE REGARDING NDA

REVEAL THEM! ? ? ?

PAGE 4, LAST PARAGRAPH

SIGNED BY COMPENSATION PANEL MEMBER

PROCEDURE CAN NOT APPLIED TO THEM!

THE DOCUMENT

LUCA

KEEP THE CONFIDENTIALITY!

WHY?

- SECURITY
- LEGALITY
- COMMERCIAL
- SENSITIVITY



SHARING MAP IS OK?



APPROPRIATE vs. INAPPROPRIATE!



WHO IN THE COMPANY WILL BE IN CHARGE ON MONITORING?

WE HAVE...



ADDING TO SOMETHING THAT ALREADY EXIST!

DESIGNING COMPENSATION BIO-DIVERSITY PROJECTS



4 WAYS

- 1 ADDITIONAL
- 2 LONG LASTING
FEET 2015 → 2040 2041
MORE THAN 25 YEARS!

3 EQUITABLE



4 KNOWLEDGE BASED



BEST COMPENSATION?

- ✓ PROTECT FOREST
- ✓ PREVENT DEFORESTATION!

MAXIMUM CONSERVATION RESERVE



COMPENSATION NOTES



COMPENSATION PLAN



CERTIFIED!



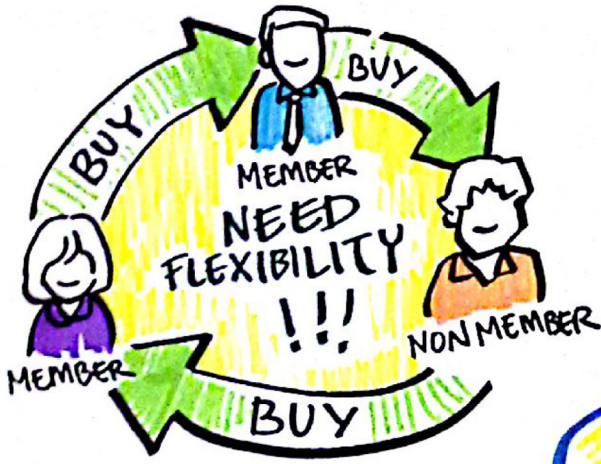
MONITORING FOR IMPLEMENTATION



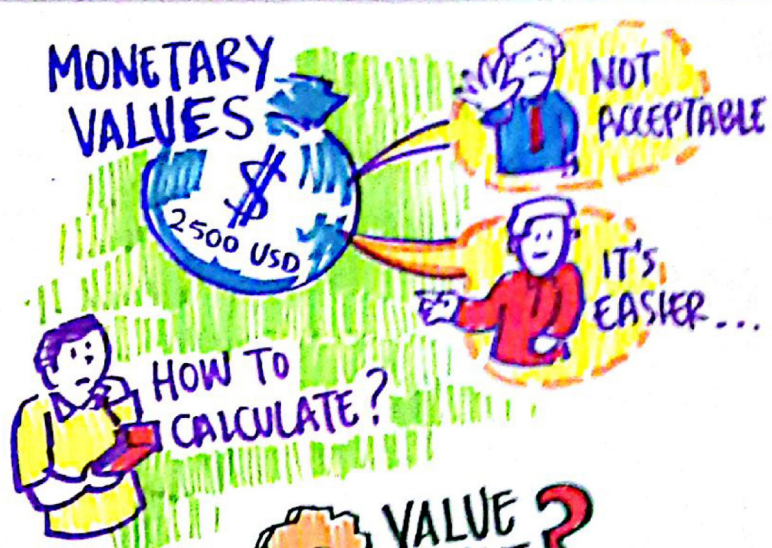
1 REPORT PER YEAR!

RAMADA PLAZA HOTEL
THURSDAY, 10 SEPTEMBER 2015

LIABILITY WHEN THERE IS A CHANGE OF OWNERSHIP



MONETARY VALUES



LIABILITY SHOULD BE IDENTIFIED BY THE CTF...

NOBODY WANTS TO BUY LIABILITIES!



DECISION SHOULD BE MADE BETWEEN THE TWO COMPANIES...



NEED MORE EXPLANATION!



ALL OF OUR CONVERSATIONS THE AGREEMENT & THE DISAGREEMENT, THE SUGGESTION & RECOMMENDATION



WILL BE SUMMARIZED AND POST

IN OUR NETWORK!



LET'S SEND A POSTCARD TO CTF

