



GOLDEN VEROLEUM (LIBERIA) INC. (GVL) SORROKON NURSERY SITE OF UP TO 100 HECTARES, TRENBO DISTRICT, GRAND KRU COUNTY, REPUBLIC OF LIBERIA

RSPO NEW PLANTING PROCEDURES

Summary report of SEIA (ESIA) and HCV Assessment

PREPARED FOR GVL BY

Solomon P. Wright, E. Abraham T. Tumbey Jr.

May 24, 2013

RSPO

TABLE OF CONTENTS

1. EXECUTIVE SUMMARY.....	2
2. SCOPE OF THE SEIA AND HCV ASSESSMENT	4
3. ASSESSMENT PROCESS AND PROCEDURES	12
4A. SUMMARY OF ASSESSMENT FINDINGS (FOR SEI ASSESSMENTS).....	18
4B. SUMMARY OF ASSESSMENT FINDINGS (FOR HCV ASSESSMENT).....	19
5. INTERNAL RESPONSIBILITY	22
APPENDIX I: COMMUNITIES MEETING & DOCUMENTATION SAMPLES	23

1. Executive Summary

This is a Summary of Social and Environmental Impact Assessment (SEIA, under Liberian Law called the environmental and Social Impact Assessment, ESIA) and High Conservation Value (HCV) assessments of a 100 hectare nursery site developed by Golden Veroleum (Liberia), Inc. (GVL) in the north of Trenbo District, Grand Kru County, Republic of Liberia.

The area is part of a total of 97,000 hectares gross concession area for investigation permitted to GVL in Gran Kru County. GVL is a legal entity registered and incorporated under the laws of Liberia. In August 2010 GVL entered into a concession agreement with the Government of Liberia for the development of oil palm plantation in Sinoe, Gran Kru, Maryland, RiverCess and River Gee counties in Southeastern Liberia. The Concession agreement was preceded by community briefings and consultations in May 2010. The Act to ratify the Concession Agreement between the Republic of Liberia and Golden Veroleum (Liberia) Inc. was passed on September 1, 2010 by the Liberian Legislature and printed as a Law on September 2, 2010.

Primary forest

The area does not contain any primary forest.

Area required to maintain or enhance one of more High Conservation Values (HCVs)

Upon the assessment of the nursery site, it was established that the planned 100 hectares site is relevant in relation to 3.1 ha of HCV 4 (4.1 water catchment and 4.2 erosion control) and 1.3 ha of HCV5 and HCV 6 (cultural identity, specifically cemeteries).

SUMMARY TABLE OF HCVS

HCV	DESCRIPTION	PRESENT	ABSENT
HCV 1.1	Protected Areas		A
HCV 1.2	Critically Endangered Species		A
HCV 1.3	Concentrations of threatened or endangered or endemic species		A
HCV 1.4	Critical Temporal Concentrations		A
HCV 2	Large landscape level forests		A
HCV 3	Rare, Threatened or Endangered Ecosystems		A
HCV4.1	Forests critical to water catchments	P	
HCV4.2	Forests critical to erosion control	P	A
HCV4.3	Forests providing barriers to destructive fire		A
HCV 5	Meeting Basic Needs of Local communities	P	
HCV 6	Forest Areas of Critical Value to Traditional Culture	P	

HCV factors are also linked or present in the neighboring communities:

- HCV4 (Forest areas that provide basic services of nature in critical situations such as water catchment and erosion control)

The Kullor and Killay are two streams flowing adjacent the project site. The Kullor River serves as a natural boundary to the nursery site on one side and the Killay River which serves as natural boundary to the nursery site on another side. The community of Sabaken uses the Killay River for drinking and other domestic usage. The Kopion Stream within the town limit of Wutuken also is used for drinking and other domestic usage. Of these, the northern part of the Killay River is a water collection point to irrigate the nursery.

- HCV 5: (Forest areas fundamental to meeting basic needs of local communities)

The forest area composing of the Sorroken old gravesite is also being used for building and roofing material for the communities of Sorroken, Sargbaken and Gedebo. The reliance of the communities on the site for basic needs such as building materials, food, traditional herbs, roofing materials and nutritional ingredients to include meat, fish, wild yam and fruits was identified to be high priority. Medicinal plants found within the sacred areas and old town spots of Sorroken and Sargbaken include Manniphitonfulfifurm, Garaniaafzeia and Entandrophgmautiles. These plants are used cure talash on baby (sore within the baby stomach) urinary infection and stomach pains respectively.

- HCV6 (Forest areas critical to local communities' traditional cultural identity areas of cultural, ecological, economic or religious significance identified in cooperation with such local communities).

Three categories of this HCV were identified in and around towns surrounding the nursery site. The three categories include three old town areas, one in Sorroken and Sarbaken, and two in Wutuken (Yarken); six graves and cemetery areas to include three graves/cemetery in Sorroken and three grave/cemetery in Wutuken and four sacred areas to include two in Sorroken and two in Wutuken. All of these were however, found outside of the nursery area.

Areas of peat soils

There is no peat soil identified in any area of the nursery site or area surrounding the site.

Local peoples' lands

The referenced area is held by the towns of Sorroken and Wutuken. The Sorroken and Wutuken communities allocated the said land to GVL in 2011, 2012 and further ratified the granting of the land by Letter of Declaration for the updated SEIA/ESIA in April 2013.

For part of the Government, the Minister of Agriculture, Minister of Lands, Mines & Energy, and Minister of Justice have granted GVL a Land Use Certificate probated by the Judge of the Monthly and Probate Court Grand Kru County, under file 1-2012 p 120-126.

2. Scope of the SEIA and HCV Assessment

Organization information and contact person

Company Name		Golden Veroleum (Liberia) Inc			
Address:	17th Street, Villa Samantha (Beach Side), Sinkor				
City:	Monrovia	Post Code:	NA	Country:	Liberia
Phone:	+44 7780- 662 800			Fax:	NA
Contact:	David Rothschild			Position:	Director
Alternative Contact:	MattiKarinen			Position:	Director
E-Mail:	david.rothschild@veroleum.com			Web site:	www.veroleum.com
RSPO Membership № : Ordinary member Approved 29/08/2011, 1-0102-11-000-00					
Nature of Business:	Oil palm				
Geographical Location:	Grand Kru County, Trenbo District, Sorroken City				

Company Name		Green Consultancy Inc	
Green Consultancy inc AbiJaoudi Building Broad & Gurley Street Monrovia, Liberia www.greenconsliberia.com	Solomon P Wright +231777001933 solopwt@yahoo.com	E. Abraham TumbeyJr +231886530870 abtumbey@yahoo.com	

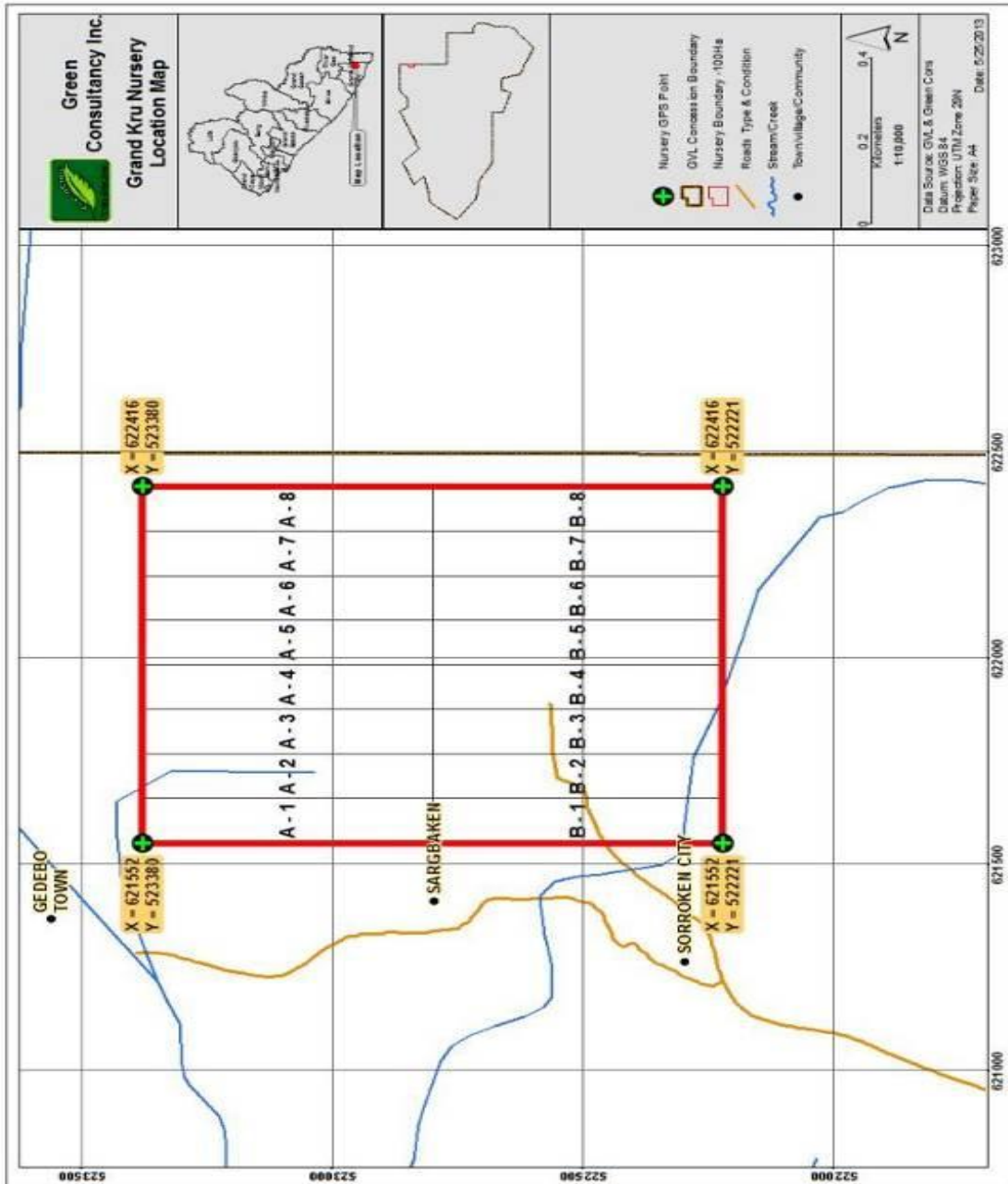
List of Legal documents and regulatory permits and property deeds related to the areas assessed

Documents	Issue By And Through	Date And Code Number
Ratified Concession Agreement between the Government of Liberia and Golden Veroleum(Liberia) Inc.	Republic of Liberia by Authority Ministry of Foreign Affairs Monrovia, Liberia	Approved September 1, 2010 and published and printed September 2, 2010
Business Registration Certificate	Ministry of Commerce and Industry	October 13, 2012/2013
Tax Identification Number	Ministry of Commerce and Industry	TIN - 426669005(Oct 15, 2010)
Environmental Permit	Environmental Protection Agency of Liberia (EPAL)	EPA/EC/ESIA/002-0411
Import permit for plants or other goods governed by the Phytosanitary Regulation	Ministry of Agriculture(MOA)	NOES/RL/22/2011 March 23, 2011
Phyto-certificate	Ministere De L'Agriculture De L'Elevage Et De La Peche Benin	000774 12/04/2011
Land Use Certificate	Minister of Agriculture, Minister of Lands, Mines & Energy, Minister of Justice, Judge of the Monthly And Probate Court Grand Kru County	1-2012 p 120-126
Letter of Declaration for the offer of 100ha for the nursery	Sorroken and Wutuken communities	April 5, 2013

Location maps both at landscape level and property level

The nursery area is located between Sorroken and Wutuken communities, north of TrenboDistrict (X-621241, Y-523254). The 100ha area is part of a gross area of 97,000 hectares approved concession area.

Figure 1: Landscape Level Location Maps



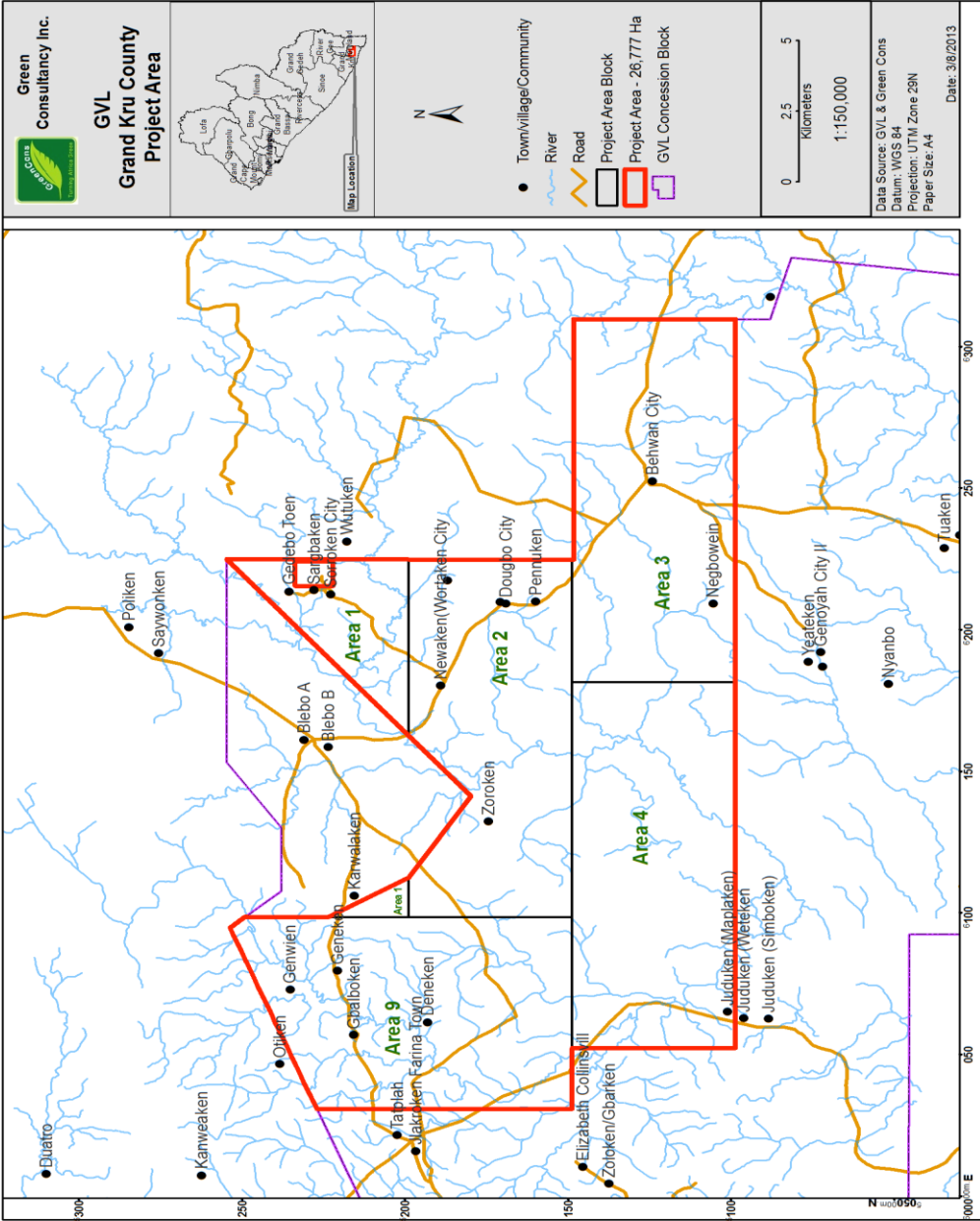


Figure 2: Landscape Level Land Cover Map by Satellite Imagery

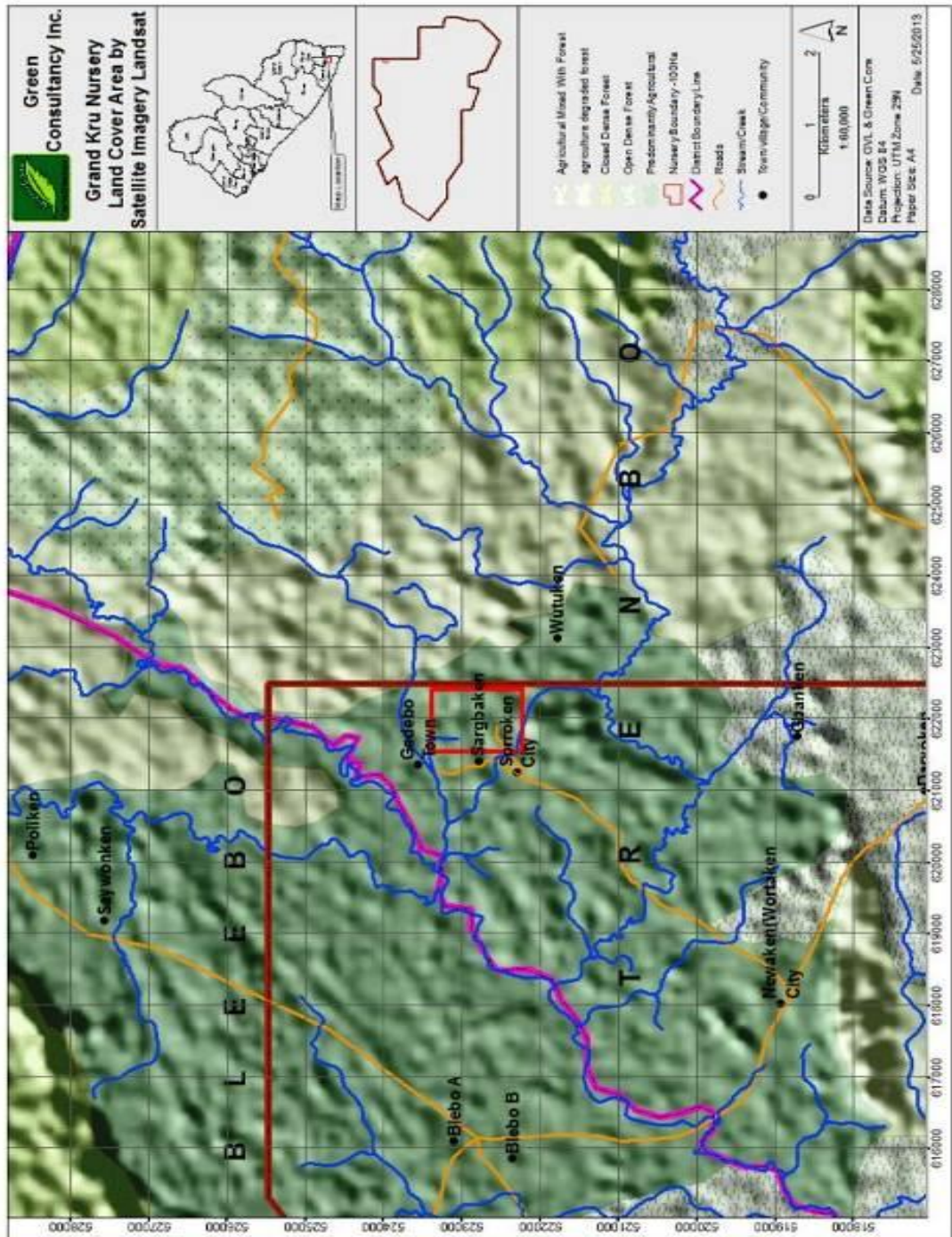


Figure 3: Property Level Nursery Soil Map

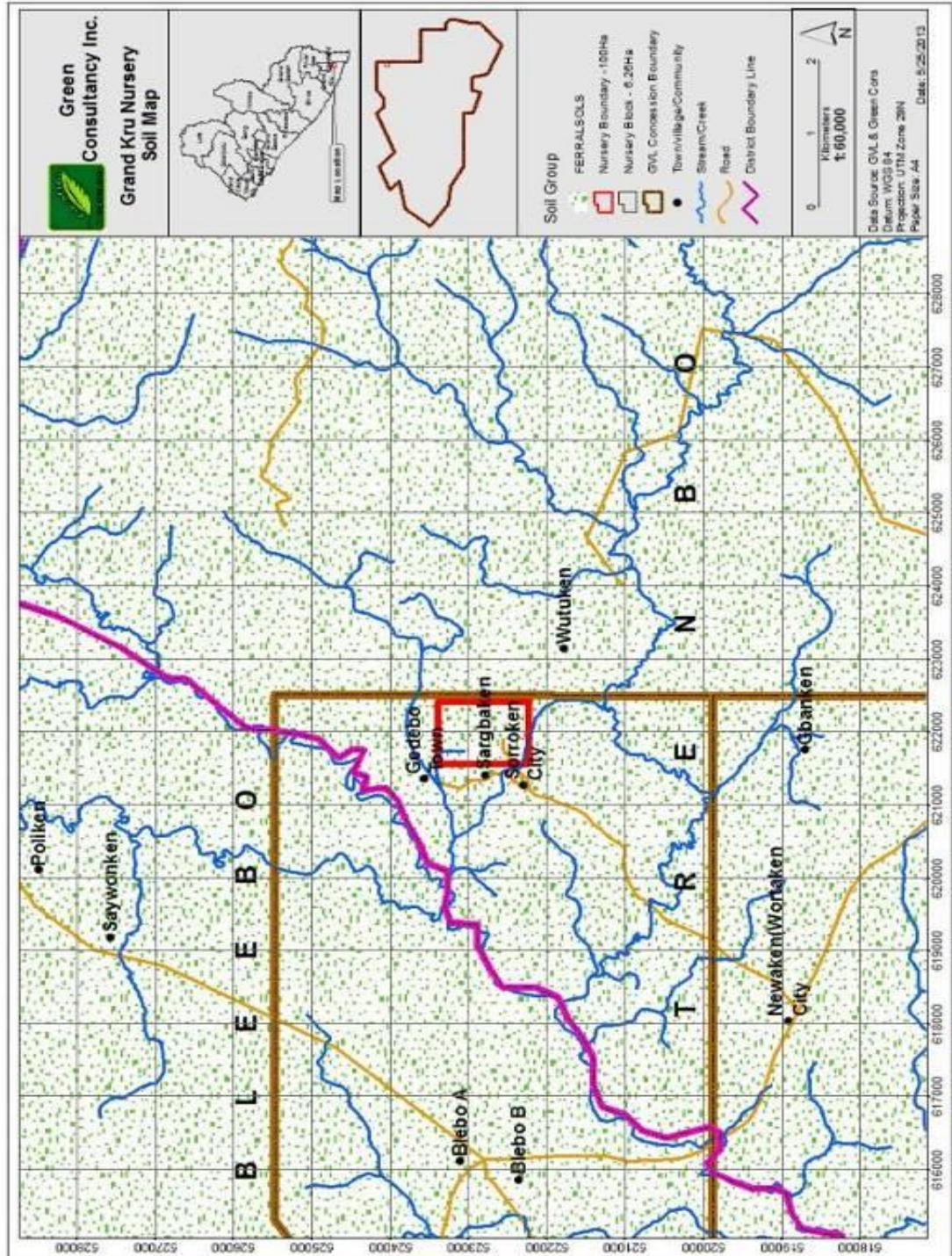
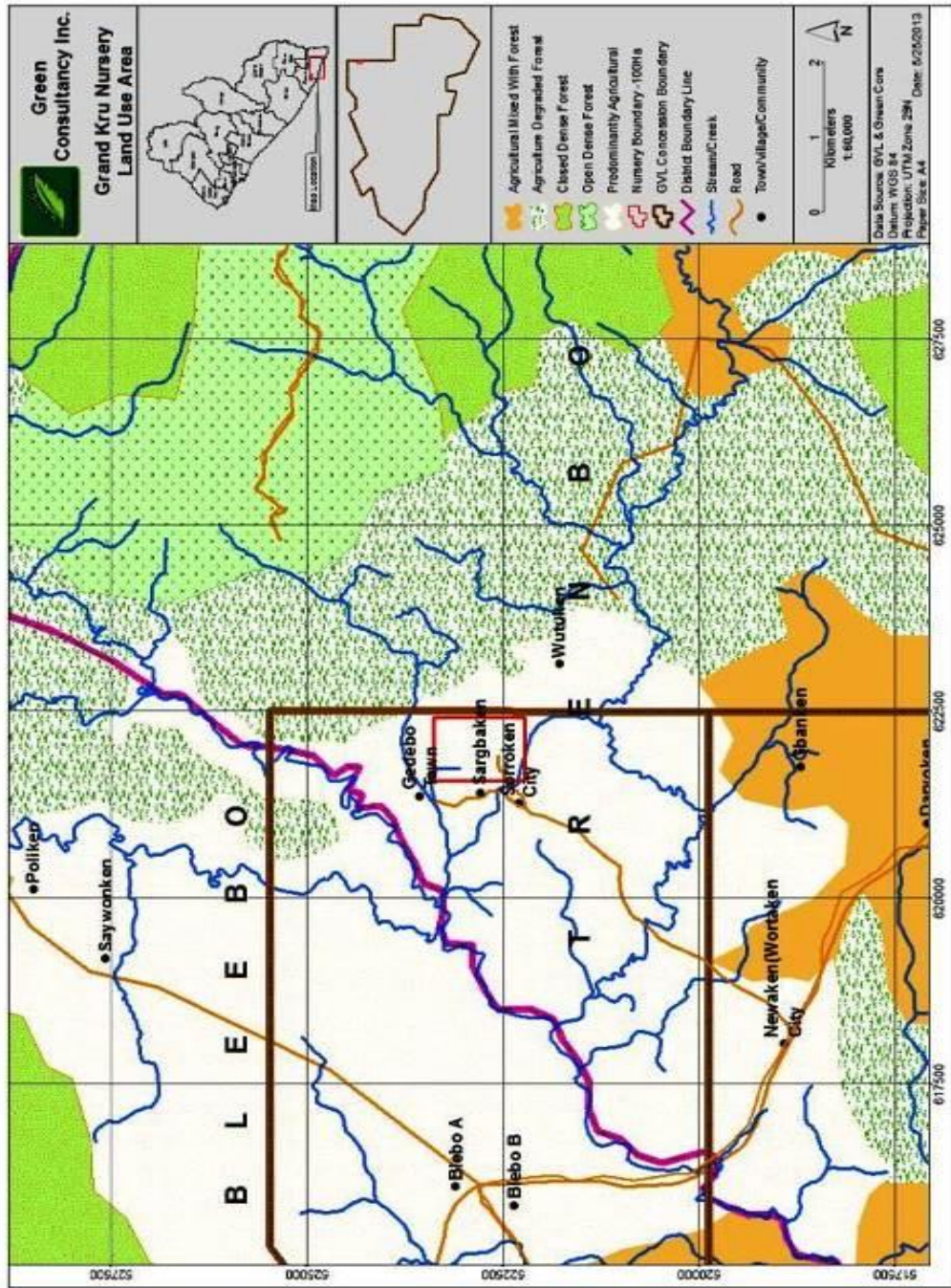


Figure 4: Property Level Land Use Map



Area of new Plantings and time-plan for new plantings

Development Area	ACTIVITY	YEARLY HECTARES		
		2011	2012	2013
Sorrokken Nursery (100 hectare at full size)	LAND PREP		49	51
	NURSERY DEV		49	51
	PLANTING	-	-	-

3. Assessment process and procedures

Assessors and their credentials

The teams for the ESIA and HCV Assessment study include forestry and biodiversity experts, sociologist/Anthropologist, biologist and GIS Specialist with long experiences both in and out of the field. A brief profile of the team leaders are mentioned below:

Solomon P. Wright:

BSc. (Cum laude) General Forestry, Candidate MSc. Regional Science, HCV Resource Practitioner and Environmental & Social Safeguards technician, EPA Certified Professional Environmental Evaluator. As lead environmentalist for most of work performed, he has conducted SEIA, Environmental Management Plan, Environmental Scoping Reports and Environmental Audits among others. Mr. Wright has to his credits different levels of trainings, seminars and workshops and certifications on environmental themes, both nationally and internationally. Training background include: identification of environmental issues, approach to handling environmental issue, community engagement and involvement in project and procedures in project approach in order to avoid conflict which may arise as a result of project operation. Have had over six years of experience in conducting Environmental and Social Impact Assessment in all of the counties of Liberia from 2005-2012. Most of the works have been presented to a number of stakeholders which include National and International Non-Governmental Organization, Civil Societies Groupings, relevant Government agencies and the local residents mostly affected by the project.

E. Abraham T. Tumber Jr,

Mr. Tumbey is a candidate for M.Sc in Regional Planning. His academic qualification includes a BSc. in General Biology from the university of Liberia, a certificate in socio-economic surveys and public participatory engagement at Grassroots Development Agency, World Bank training in environmental and social safeguards, environmental management training and licensure (ESIA) and environmental monitoring at the EPA of Liberia. Mr. Tumbey has extensive experience in survey design and administration, with working experience in all of the 15 counties of Liberia. He has performed multiple tasks in the areas of socio-economic surveys and public consultation in various ESIA projects in the area of mining, agriculture, road construction and forestry. His roles in these projects include planning field surveys, data analysis, public consultation and reporting. Prior to his work as an environmental and social specialist, Mr. Tumbey worked with community based organisations and civil society groups in the areas of community mobilisation, development and environmental awareness. Mr. Tumbey has extensive knowledge of socio-economic, cultural, biodiversity and conservation issues in Liberia and the Mano River Union, and has close to ten years of experience in the field of environmental and social studies. Currently, he serves as the coordinator of the Union of Certified Environmental Professionals of Liberia (UCEL). He is an EPA Certified Professional Environmental Evaluator; a Roundtable on Sustainable Palm Oil (RSPO) approved High Conservation Value (HCV) Assessor, a member of the HCV Resource Network, as well as a member of the Society Against Environmental Degradation of Liberia (SAED).

Sanco Lysander

Candidate for M.A in Peace Studies, B.A Sociology/Anthropology. Specialist in community engagement, socio-economic baseline studies and analysis, FPIC

Stephen Garnawa

BA-Sociology, MA, MPhil. Specialist in community engagement, socio-economic baseline studies and analysis, FPIC

Anthony Koigbli

BSc- General Forestry. Specialist faunaand flora survey and data analysis, HCV identification and mapping.

Larry T. Kanwee

GIS Technician. More than 6 years of experience in Geo- Referencing, Digitize, Map production, Creation of shape file, etc.

Assessment methods

During the periods May-July 2011, the SEIA process was initiated within the study area, covering all the districts making up the project area, inclusive of the nursery area (Threnbo). The assessment was completed in late July 2011 and approved by the EPA in November 2011 (Permit Issued). Based on the request of GVL, to meet up with the requirements of the New Planting Procedures, the SEIA was revised in April 2013 with emphasis on socio-economic baseline analysis and community level engagement.

Below is a summary of the methodology for the HCV and ESIA:

An initial rapid reconnaissance survey was conducted in the project terrains in order to acquire basic information of the socioeconomic conditions, ecology and physical environment. This was conducted by means of questions and information obtained on numerous issues related to the project and the project areas based on local knowledge and experience. Issues of concentration include: Description of the proposed project, maps of the project , Location of the project (maps and photographs showing the location of the project relative to surrounding physical, natural and man-made features, existing land-uses on and adjacent the project site, description of the main activities.

Survey Questionnaires

Questionnaires were used to collect data from households. Two types of questionnaires were addressed.

- Precise and closed questions with a list of possible answers to each question
- Broad and open ended questions giving the respondent an opportunity to express views freely

The questionnaire addressed to the household was structured into sections designed for measuring the following points: Demography and livelihood activities (household size, income level, livelihood activities, expenditure, education, and health), use of natural resources, Local people relationship, attitudes, perception and views toward project users in regard to access and use of forest resources, etc.

Focus Group Discussions

Focus group discussions were organized with the members of the community such as Clan Chiefs, Town Chiefs, Elders, Women groups, farmers, Youths, Inspectors, Commissioners, Principals, Pastors, teachers, hunters, farmers, fisherman, herbalist, motor bike riders etc. A total of 28 persons participated in the focus group discussions for Sorroken, Gedebo and Wutuken. These discussions were a sort of participatory rural appraisal in order to grasp information about community history, profile, livelihoods activities, resources accessibility, constraints and problems, local institutions, relation with other forest users and existing conflicts. The discussions were organized in a form of a deliberative forum where the research team asked the questions to the villagers and several answers were given which were then deliberated upon to have the most reliable answers. The focus group discussion took place either during early morning or in the evening period so that large numbers of the villagers could attend before or after returning from their daily activity and it lasted for about two-three hours in each village.

Key stakeholders and concern institutions were written and informed about the project. A Notice of Intent (NOI) for the project was published in the New Democrat Newspaper in Monrovia. The NOI was also posted in the administrative headquarters of the County, Districts, Towns and villages within and surrounding the project area. In addition, the NOI was announced on a local radio station in Barclayville, Grand Kru County for two weeks.

Figure 5: Focus group Meeting in Wutuken



Identifying High Conservation Values

The steps taken to perform the HCV assessment tasks are described below.

Step 1. Preliminary Assessment and Preparation for Field Assessment. Preliminary assessment of spatial data, interviews, site assessment and literature review. The Liberia Forest Reassessment map produced in 2004 was reviewed along with the Land Use Suitability Map for Commercial, Conservation, and Community Forests from the Forestry Development Authority. It was evident that this landscape is one of many large landscape original forests that have been degraded due to slash and burn agriculture.

- GIS overlays of concessions already licensed by the government for conversion indicated that planned land use changes for the landscape will further reduce the area of contiguous forest. Literature research included consultation, local village and town reports of wildlife and flora species, maps, Forestry Development Authority-Protected Area Map

Step 2. Field Observations and Data Collection

- Data were gathered through meetings with the management of GVL Liberia as well as the community relations and environmental/ HCV team. A meeting was held with the local communities requesting their participation in the HCV identification, demarcation and mapping. Each community designated their authorized representatives to participate in the process.
- Observations, ground-truthing (ecological surveys of the block), and rapid survey of conservation values were conducted for species, ecosystems, forest services and community resource uses (basic needs and cultural). These were obtained through field visits to locations within and surrounding the 100 ha area on foot.
- Baseline spatial information on forest cover and landscape features was obtained
- Species inventory baselines were developed through anecdotal information; Primary data gathering was also collected by field ecologist and botanist.
- Background information on species and conservation status was gathered from literature searches and maps, from interviews with local people and staff / workforce and from conservation and Forestry experts.

Step 3. Data analysis to determine potential HCV areas. The data analysis instrumental for the determination of HCV areas required significant professional expertise from the evaluators working in the forest and villages

Stakeholder consultation (stakeholders contacted, consultation notices and dates)

Apart from the public and stakeholder consultations and notifications which took place in 2011 during the conduct of the ESIA. Additional consultations also took place commencing September 18, 2012 to April 17, 2013 by RSPO approved HCV Assessors Solomon P. Wright and E. Abraham T. Tumbey Jr. of Green Consultancy Inc. pursuant to the New Planting Procedure. Three meetings were held in each of the project communities. The first meeting was intended to inform community people about the purpose of the study and to provide them with relevant information on the ESIA, RSPO Principles and Criteria, the essence of the HCV assessment and potential impacts of the project. The Second meeting was the focus group meeting held for the purpose of gathering socio-economic information about the communities, which was followed by a third meeting intended to obtain feedback from the communities and stakeholders with reference to their inputs on the HCV assessment and SEIA report.

Table 1: List of stakeholders contacted as shown in the table below:

No	Name	Position	Location
General information			
1	Hon. Elizabeth Dempster	County Superintendent	Barclayville
2	Jacqueline Nah	Land Commissioner	Barclayville
3	Napoleon S. Toe	District Commissioner	Sorroken
4	James Q. Dweh	Clan Chief	Sorroken
5	Roland N. Toe	General Town Chief	Sorroken
6	Anna Q. Baker	Chairlady	Sorroken

No	Name	Position	Location
7	Joe Q. Gigba	Chairman-Council of Elders	Sorroken
8	Moses Q. Polley	Chairman, City Council	Sorroken
9	Paul K. Gigba	Youth Chairman	Sorroken
10	Dissy G. Sabblah	Youth/Girls Representative	Sorroken
11	Jacob K. Polley	City Clerk	Sorroken
12	Benedict S. Dioh	Clan Chief	Wutuken
13	KwiahKue	General Town Chief	Wutuken
14	Fred T. Toe	Chairman-Council of Chiefs	Wutuken
15	Eliza T. Weah	Women Chairlady	Wutuken
16	Fred T. Weah	Youth Chairman	Wutuken
17	J. GborPolley	Township Council Chairman	Wutuken
18	Isaac N. Tarbeh	Township Commissioner	Wutuken
National Government			
1	Hon. WessehBlamoh	Representative	Grand Kru County
2	Hon. Rosalind Sneh	Superintendent-2011	Barclayville
93	Hon Elizabeth Neh	Superintendent-2013	Barclayville
4	Hon. Jacqueline Nah	Land Commissioner	Barclayville
5	Hon. Napoleon Toe	Commissioner, Trenbo District	Sorroken
6	Benjamin W. Bedell	Agriculture Coordinator	Barclayville
7	McAlbert Donnie	EIA Assistant-EPA	Barclayville
Civil Society			
1.	Mr. Isaac Sundueh	Chairman, Grand Kru County Youth Development Association	Barclayville
2	Sam Cooper	Council Chairman	Behwan
GVL			
1.	Krishnan Nalaiah	Regional Controller	Duogbo
2	Isaac G. NyemaSr	Community Relations Officer	Duogbo
NGO			
1.	Dickson Chowolo	Executive Director, Forest Cry	Monrovia
2	Michael Garbo	Acting Executive Director, Society for the Conservation of Nature of Liberia	Monrovia

Figure 6: Three Communities (Sorroken, Sorgbaken and Gedebo) meeting held in Sorroken School building



Other documents referenced:

1. Ellis, F. (2000). Rural Livelihoods and Diversity in Developing Countries. Oxford.
2. IUCN. 2004 The IUCN/SSC Red List of Threatened Species. IUCN Glan
3. Liberia, G. o. (1986). Liberian Constitution. Monrovia.
4. Liberia, G. o. (2003). Environmental Protection and Management Law of Liberia, pp.21-22
5. Liberia, R. o. (2008). Grand Kru County Development Agenda 2008-2012. Monrovia
6. Liberia Forest Reassessment, 2004
7. NECOLIB, Liberia Biodiversity Strategy Action Plan (LBSAP), (2003),
8. Scoones, I., 1998. 'Sustainable Rural Livelihoods: A Framework for Analysis'. IDS
9. SGS Environment. (2005)Environmental Impact Statement Main Report-Final EIS for Newmont Ghana
10. UNEP, (2004). Desk Study on the Environment in Liberia.
11. Wily, Liz Alden. 2007. So Who Owns the Forest – An Investigation into Forest Ownership and Customary Land Rights in Liberia (November).
http://www.rightsandresources.org/documents/files/doc_102.pdf (accessed 9 February 2009).

4a. Summary of assessment findings (for SEI assessments)

Summary of key findings in respect of socio-economic impacts to country, region and local communities

The development of the nursery will have a positive impact on the socio-economic of the county, region and local communities through creating ample and sustainable job opportunity with good wages paid both in cash and in-kind. Moreover, the communities will benefit from the planned basic social services and infrastructure development surrounding the community

Summary of key findings in respect of socio-economic impact in respect of emergent communities

In future the development activities will have a positive impact on the emergent communities.

Issues raised by stakeholders and assessors comments on each issue:

Communities concern focused mainly around the issue of due compensation for their live crops in the event of land taken by GVL. They are in general satisfied with the compensation rates authorized by the Ministry of Agriculture, which were made available to them. Communities desire a harmonious relationship with the company. Assessors commented that their concerns as well as their expectations will be addressed properly through the Community Relations Office of GVL as part of its community engagement strategy. In addition to that community expectation for jobs and benefits are high. These expectations will be managed within the context of the project framework.

The situation at the moment indicates that the project is widely welcomed by the local population as indicated by their willful offer of land for the development. Communities have expressed willingness to offer more land to GVL apart from lands that will be set aside for their livelihood activities including farming. Communities are also willing to participate in the participatory mapping process.

4b. Summary of assessment findings (for HCV assessment)

Overall HCV identification and proposed measures to maintain and enhance those identified

The HCV assessment revealed that the nursery area encompasses three out of the six categories of HCVs. These include: HCVs 4, 5 and 6 which occupy 3.1 ha of HCV 4 (4.1 water catchment and 4.2 erosion control) and 1.3 ha of HCV5 and HCV 6 (cultural identity, specifically cemeteries).

HCV 4: FOREST AREAS THAT PROVIDE BASIC SERVICES OF NATURE IN CRITICAL SITUATIONS (E.G. WATERSHED PROTECTION AND EROSION CONTROL)

HCV4.1 Forests critical to water catchments

RELATIONSHIP TO THE AREA

Forest found around the nursery site was concentrated along the rivers of Killay, Kullor, Kopion and Bayella rivers/creeks. It is evident that the forest provide source of drinking water and significant ecological characteristics in controlling flooding, controlling stream flow and most especially water quality. The towns of Sarbarken and Gedebo rely on the Kullor and Killay representatively for drinking and other domestic usages including bathing, washing and cooking. Although hand pumps have been installed for both towns, some residents of the towns still depend on the water for these purposes. It was also found out that during working hours, workers of the nursery site use the Killay most especially for drinking as it lines some 108m away from the closest nursery area.

There are stretches of overlapping vegetation extending their canopies over the edges of the rivers. Tree species along these rivers/creeks encompassing Sorroken and Sorgbaken include *Upapacguinensis*, *Bombaxbuonopo*, *Erythrophleumivorense*, *Gilbertiodendronpreussii*, *Cola butingii*, *Berlineaconfus*, *Lophiraalata*, *Canariumsahweinfurthii*, *Daniellaogra*, *Anophxisklaineana*, *Cynometraanonta*. These tree species are mostly found within the old towns and sacred areas of the community. In Wutuken sacred sites, tree species such as *Futumia elastic*, *Xylophia* spp. *Ceibapentandra*, *Hallea* ciliate, *Parkia* bicolor among other species were identified. These conditions keep the water cool and shade it from intense sunlight thereby maintaining its constant flow and tide level.

HCV4.2 Forests critical to erosion control

RELATIONSHIP TO THE AREA

The presence of the forest along the above mentioned rivers is also critical in controlling erosion and downstream sedimentation.

HCV 5: FOREST AREAS FUNDAMENTAL TO MEETING BASIC NEEDS OF LOCAL COMMUNITIES.

RELATIONSHIP TO THE AREA

The assessment identified most of the forested areas of the old towns to be considered under this aspect of HCV.

The reliance of the surrounding communities on the land for basic survival such as building materials, food, traditional herbs, roofing materials and nutritional ingredients to include meat, fish, wild yam and fruits was identified to be high priority. Medicinal plants found within the sacred areas and old town spots of Sorroken and Sargbaken include *Manniphitonfulfifurm*, *Garaniaafzeia* and *Entandrophgmautiles*. These plants are used cure talash on baby (sore within the baby stomach) urinary infection and stomach pains respectively. Most of the areas identified during the assessment used by the communities for farming purposes are young bushes and fellow areas. There were clear indication that the communities are avoiding high forest areas due to the intensity of the work involved in clearing these high-forested areas and the less manpower to do such tedious work.

The old town areas are considered as HCV since these areas are still being used for farming purposes, and possess some fruit and food trees. Additionally, the presences of a number of ancestral gravesites within the areas are contributing factors to consider the area HCV.

HCV 6: FOREST AREAS OF CRITICAL VALUE TO TRADITIONAL CULTURE

RELATIONSHIP TO THE AREA

Surrounding areas to the nursery that could be impacted as a result of the nursery activities were identified to have these HCV characteristics. Two noticeable sacred areas were identified around the site. The sacred site belonging to the town of Wutuken overlooking the nursery site forming almost one end of the boundary of the nursery and the sacred site called the Soap tree belonging to the town of Sorroken and used by the community high priests for prayer ritual. Other sacred sites like the Sorroken Sacred site, the Wutuken Sacred Site also called Korllo and a number of cemeteries and grave sites to include Wutuken main cemetery and old graves in more than two locations and that of the Sorroken main cemetery and old graves in three locations in and surrounding the town.

SUMMARY TABLE OF HCVS

HCV	DESCRIPTION	PRESENT	ABSENT
HCV 1.1	Protected Areas		A
HCV 1.2	Critically Endangered Species		A
HCV 1.3	Concentrations of threatened or endangered or endemic species		A
HCV 1.4	Critical Temporal Concentrations		A
HCV 2	Large landscape level forests		A
HCV 3	Rare, Threatened or Endangered Ecosystems		A
HCV4.1	Forests critical to water catchments	P	
HCV4.2	Forests critical to erosion control	P	
HCV4.3	Forests providing barriers to destructive fire		A
HCV 5	Meeting Basic Needs of Local communities	P	
HCV 6	Forest Areas of Critical Value to Traditional Culture	P	

Measures to maintain and enhance those identified

In line with the preventive land use plan of the company, all identified HCVs will be demarcated, mapped and preserved. By identifying threats and defining social and ecological conditions required for each category of HCV to be maintained, GVL developed management and monitoring plan commensurate to respective HCV categories.

Documentation showing the obtained Free, Prior and Informed Consent of any indigenous peoples affected the development of the concession (part of RSPO requirements)

- Letter of Declaration for the offer of 100ha for the nursery from Sorroken and Wutuken communities.
- FPIC process conducted by GC

Data sources and quality

Literature review and desk work which included the interpretation of satellite imagery and the use of GIS. This was supported by field surveys to identify and demarcate HCVs in the area.

The process leading to the assessment involved the education of the local communities in understanding the entire NPP process and the essence of the different categories of HCVs (1-6), followed by community and district level stakeholders meetings. Town representatives were selected to work with the team in identifying and demarcating various HCVs. Moreover, representatives of local communities and GVL have participated in the assessment process.

Therefore the assessment had broad based sources of data and because of the use of satellite images and GIS the quality of the data is reliable.

Which HCV toolkit employed

This HCVF assessment follows the guidance document produced by ProForest: 'The High Conservation Value Toolkit' Edition 1 December 2003 in which the issues of Identifying, Managing, and Monitoring High Conservation Value Forests is explicitly identified.

Decisions on HCV status and related mapping

The above mentioned tool kit provides a detailed framework on how to define each of the six categories of the HCVs. In addition to the toolkit, professional judgment and full participation of community, local leaders and other stakeholders were used to decide on the HCV status. ArcGIS was used to do the related mapping.

5. Internal Responsibility

Formal signing off by assessors and company

Statement of acceptance of responsibility for assessments

This document is the summary of HCV (High Conservation Value) and ESIA (Environmental & Social Impact Assessment) on Golden Veroleum Liberia nursery of 100 hectare located in Sorroken and Wetiken, Threnbo District and has been approved by the Management of Golden Veroleum (Liberia) Inc.

On behalf of the Approved Assessors



Solomon P. Wright

Team Leader: RSPO HCV Approved Assessors

May 28, 2013

Management of Golden Veroleum

David Rothschild

Director-GVL

Statement of acceptance of responsibility for assessment

The assessment results herein this document on the High Conservation Value (HCV) and ESIA (Environmental & Social Impact Assessment) assessment within the project area of Golden Veroleum by two RSPO HCV Approved Assessors will be strictly applied as guidance to meeting the RSPO Principle and Criteria within the plantation.


Management of Golden Veroleum

David Rothschild

Director-GVL

APPENDIX I: COMMUNITIES MEETING & DOCUMENTATION SAMPLES

GREEN CONSULTANCY INC
 Abi Jaoudi Building, Apartment 3
 Corner of Gurley & Broad Street Monrovia, Liberia
 Tel: 06530870/077001933/077013104



ATTENDANCE ROSTER

DISTRICT: Trenbo TOWN/VILLAGE: Soboten
 GPSCOORDIANTE: 621050/522197 DATE: 03/20/13

N ^o	NAME	SEX	POSITION	SIGNATURE
1.	Peter B. Kpalo	M	Civilize Elem	<i>[Signature]</i>
2.	Johnney C. polley	M	Citizen	<i>[Signature]</i>
3.	Matthew Kit. Gigma	m	City Mayor	<i>[Signature]</i>
4.	Isaac B. Sidi	m	Elder	<i>[Signature]</i>
5.	Joe A. Gigma	"	"	<i>[Signature]</i>
6.	Lucy T. Collins	F	"	<i>[Signature]</i>
7.	Mabel G. Himmel	"	"	<i>[Signature]</i>
8.	Martha T. Seih	"	"	<i>[Signature]</i>
9.	Daisy G. sabblal	"	"	<i>[Signature]</i>
10.	Garretson Himmel	M	Pastor	<i>[Signature]</i>
11.	Napoleon S. Toe	M	Dist. Comm	<i>[Signature]</i>
12.	Gampson Gigma	M	Youth	<i>[Signature]</i>
13.	Garretson B. King	M	Elder	<i>[Signature]</i>
14.	Michael N. Collins	M	Teacher	<i>[Signature]</i>
15.	Paul K. Gigma	m	Youth	<i>[Signature]</i>
16.	Augustine Collins	m	Citizen	<i>[Signature]</i>

Website: <http://www.greenconslliberia.com> email: info@greenconaliberia.com
 "Turning Africa Green"

No	NAME	SEX	POSITION	SIGNATURE
17.	Washington Sarder Jalk	M	Student	Signature
18.	SAMPSON WEAH	M	Student	Signature
19.	Horatious D. Toe	M	Clerk	Toe
20.	Roland N. Toe	M	Town chief	
21.	James O. Daweh	M	Clan chief	
22.	Isaac N. Tyne	M	Teacher	Isaac N.
23.	William H. Tebah	M	Elder	
24.				
25.				
26.				
27.				
28.				
29.				
30.				
31.				
32.				
33.				
34.				
35.				
36.				
37.				
38.				
39.				
40.				
41.				
42.				

RECEIPT FOR DOCUMENTATION

DATE: 03-23-2013

I THE UNDERSIGNED IN PERSON OF Napoleon S. Tve,
POSITION Asst. Commissioner HAVE RECEIVED THE FOLLOWING
DOCUMENTATION (SIMPLIFIED VERSION) FROM GREEN CONSULTANCY INC AS PART OF THE
PROCESS OF INFORMATION DISSEMINATION IN REFERENCE TO THE GOLDEN VEROLEUM OIL
PALM PROJECT.

- ENVIRONMENTAL & SOCIAL IMPACTS & MITIGATION PLAN
- GVL CONCESSION AGREEMENT
- ROUNDTABLE ON SUSTAINABLE PALM OIL NEW PLANTING PROCEDURES
- MAP OF THE NEW PLANTING AREA
- REPUBLIC OF LIBERIA MINISTRY OF AGRICULTURE PRICE FOR ECONOMIC CROPS
DAMAGED DURING DEVELOPMENT PROJECTS (AUGUST 2012)

SIGNED: N.S. Tve

GREEN CONSULTANCY INC

Abi Jaoudi Building, Apartment 3
Corner of Gurley & Broad Street Monrovia, Liberia

Tel: 06530870/077001933/077013104



ATTENDANCE ROSTER

DISTRICT: Trenbo TOWN/VILLAGE: Gedoko

GPS COORDINATE: 621347/523557 DATE: 03-23-2013

N ^o	NAME	SEX	POSITION	SIGNATURE
1.	Timothy S. NYeka	M	Teacher	
2.	Samuel D. Kobbek	M	Elder	
3.	Daniel H. Toe	m	Teacher	
4.	David T. Sallah	m	youth	
5.	Peter S TOE	m	Brang Head	
6.	Peter N NYeka	m	student	
7.	Sunday G. Cooper	M	Yoth	
8.	Jacob B. Brown	M	Town Chief	
9.	Elizabeth Cooper	f	women Rep	
10.				
1.				
2.				
3.				
4.				
5.				
6.				

Website: <http://www.greenconsliberia.com>

email: info@greenconsliberia.com

"Turning Africa Green"

RECEIPT FOR DOCUMENTATION

DATE: 03-23-2013

I THE UNDERSIGNED IN PERSON OF Napoleon S. Tre,
POSITION Dist. Commissioner HAVE RECEIVED THE FOLLOWING
DOCUMENTATION (SIMPLIFIED VERSION) FROM GREEN CONSULTANCY INC AS PART OF THE
PROCESS OF INFORMATION DISSEMINATION IN REFERENCE TO THE GOLDEN VEROLEUM OIL
PALM PROJECT.

- ENVIRONMENTAL & SOCIAL IMPACTS & MITIGATION PLAN
- GVL CONCESSION AGREEMENT
- ROUNDTABLE ON SUSTAINABLE PALM OIL NEW PLANTING PROCEDURES
- MAP OF THE NEW PLANTING AREA
- REPUBLIC OF LIBERIA MINISTRY OF AGRICULTURE PRICE FOR ECONOMIC CROPS
DAMAGED DURING DEVELOPMENT PROJECTS (AUGUST 2012)

SIGNED: N.S. Tre

GREEN CONSULTANCY INC

Abi Inouli Building, Apartment 3
 Corner of Gurley & Broad Street Monrovia, Liberia
 Tel: 06530870/077001933/077013104



ATTENDANCE ROSTER

DISTRICT: Trenbu TOWN/VILLAGE: Klutuken
 GPSCOORDIANTE: 622 95 / 521 844 DATE: 03/23/12

N ^o	NAME	SEX	POSITION	SIGNATURE
1.	BENEDIKT S. DIOH	M	clan chief	
2.	Isaac K. Williams	M	T/ship clerk	
3.	Isaac K. Tarboh	M	T/ship Comm	
4.	Kwameh K. I.E	M	Town chief	
5.	Kofi D. Tarboh	m	youth	
6.	Sam K. Korbor	M	Teacher	
7.	Johnson G. Polley	M	Principal	
8.	Albert P. Diuh	M	Principal	
9.	Mary K. Korbor	F	woman	
10.	Fredrick T. Weah	m	youth	
11.	John P. Brown	M	youth	
12.	Alfred I. Ankrah	M	youth	
13.	sarah N. Polley	F	woman	
14.	F. Frederick Tse	m	elder	
15.	Joshua K. Brown	m	teacher	
16.	Edna P. Jeli	F		

Website: <http://www.greenconsliberia.com>

email: info@greenconsliberia.com

"Turning Africa Green"

No	NAME	SEX	POSITION	SIGNATURE
17.	Patricia K. Wilson	F		
18.	Moses N. Korbor	M.		
19.	Augustine A. Korbor	ms.		
20.	Sunday Korbor	m		S K JF
21.	Emmanuel B. Merrion	m		ZE
22.	Jeremiah P. Tumbach	m		J.P.
23.	Willie N. Neah	m		W.N.
24.	Clarence K. Tumbach	m		
25.	Samuel H. Williams	m		
26.	Amos Korbor			
27.	Mark Natt	M		M.N.
28.	Eliza Neah	F	Women Leader	
29.	Dissy Kaydu	F	Women Ass.	
30.	Annie Diob	F		Annie Di'ho
31.	Esther Hinnah	F		
32.	Lucy Iore	F		
33.	Zeith Korbor	F		
34.	Eva M. Korbor	F		
35.	Hannah K. Iore	F		
36.	Josephus Kaydu	F		
37.	Bolton K. Tumbach	M	Declarator	
38.	Cyria Polley	F		C.P.
39.	Ezekiel Korbor	m		E.K.
40.	Cecelia Polley	F		C. Polley
41.	Nathaniel Iore	M		
42.	Bestman Iore	m		

RECEIPT FOR DOCUMENTATION

DATE: March 23, 2013

I THE UNDERSIGNED IN PERSON OF Albert P. Diah,
POSITION Principal HAVE RECEIVED THE FOLLOWING
DOCUMENTATION (SIMPLIFIED VERSION) FROM GREEN CONSULTANCY INC AS PART OF THE
PROCESS OF INFORMATION DISSEMINATION IN REFERENCE TO THE GOLDEN VEROLEUM OIL
PALM PROJECT.

- ENVIRONMENTAL & SOCIAL IMPACTS & MITIGATION PLAN
- GVL CONCESSION AGREEMENT
- ROUNDTABLE ON SUSTAINABLE PALM OIL NEW PLANTING PROCEDURES
- MAP OF THE NEW PLANTING AREA
- REPUBLIC OF LIBERIA MINISTRY OF AGRICULTURE PRICE FOR ECONOMIC CROPS
DAMAGED DURING DEVELOPMENT PROJECTS (AUGUST 2012)

SIGNED: [Signature]

GREEN CONSULTANCY INC

Abi Jaoudi Building, Apartment 3
 Corner of Gurley & Broad Street Monrovia, Liberia
 Tel: 0653087007/001933/077013104



ATTENDANCE ROSTER

DISTRICT: Trenbo TOWN/VILLAGE: Songbaken
 GPSCORDIANTE: ~~621423/522786~~ DATE: 03-23-2013
621423/522786

N ^o	NAME	SEX	POSITION	SIGNATURE
1.	Annah A. Baker	F	women Leader	
2.	Mary Q. Timneh	F	Women Rep	
3.	Hiamie Town	M	Chairman	
4.	Alben C. Nyenyan	M	Youth	
5.	Daniel K. Hima	M	Youth	
6.	Moss Q. Polley	M	Youth	
7.	Lawrence Steh Nyend	M	Chairman	
8.	Martha Baker	F	Woman	
9.	Matthew Polley	M	Youth	
10.	Sarah Polley	F	Youth	
11.	Victor Joe	M	Youth	
12.				
13.				
14.				
15.				
16.				

Website: <http://www.greenconsliberia.com> email: info@greenconsliberia.com

"Turning Africa Green"

RECEIPT FOR DOCUMENTATION

DATE: 03-23-2013

I THE UNDERSIGNED IN PERSON OF Napoleon S. Tve
POSITION Dist. Commissioner HAVE RECEIVED THE FOLLOWING
DOCUMENTATION (SIMPLIFIED VERSION) FROM GREEN CONSULTANCY INC AS PART OF THE
PROCESS OF INFORMATION DISSEMINATION IN REFERENCE TO THE GOLDEN VEROLEUM OIL
PALM PROJECT.

- ENVIRONMENTAL & SOCIAL IMPACTS & MITIGATION PLAN
- GVL CONCESSION AGREEMENT
- ROUNDTABLE ON SUSTAINABLE PALM OIL NEW PLANTING PROCEDURES
- MAP OF THE NEW PLANTING AREA
- REPUBLIC OF LIBERIA MINISTRY OF AGRICULTURE PRICE FOR ECONOMIC CROPS
DAMAGED DURING DEVELOPEMENT PROJECTS (AUGUST 2012)

SIGNED: N.S. Tve