

**Summary Report of Planning and Management of SEIA, SIA and
HCV in PT Tekukur Indah**

**RSPO
NEW PLANTING PROCEDURES**

**Summary Report of Planning and
Management**

**PT Tekukur Indah
Berau District
East Kalimantan Province
Indonesia**

Summary Report of Planning and Management of SEIA, SIA and HCV in PT Tekukur Indah

TABLE OF CONTENTS		
No.	Subject	Page
1	Executive Summary	3
2	Reference Documents	5
2.1	List of Reports	5
2.2	List of Legal Documents, Regulatory Permits and Property Deeds	6
2.3	Location Map of Tekukur Indah-both at Landscape Level and Property Level	8
2.4	Area of New Plantings and Time-Plan for New Plantings	10
3	SIA and HCV Planning & Management Personnel	12
3.1	Organisation Information and Contact Person	12
3.2	Personnel involved in Planning and Management	12
3.3	Stakeholders to be involved	13
4	Summary of Management and Mitigation Plans	14
4.1	Summary of Social Impact Assessment Management and Mitigation Plans	14
4.2	Summary of HCV Management and Mitigation Plans	16
5	Internal Responsibility	19

Summary Report of Planning and Management of SEIA, SIA and HCV in PT Tekukur Indah

1.Executive Summary

PT Tekukur Indah (TI), is an oil palm company located in Berau District, East Kalimantan Province. It is owned by Batu Kawan Berhad and managed by Kuala Lumpur Kepong Berhad who is a member of RSPO.

PT TI has conducted Social Environmental Impact Assessment (SEIA) or UKL-UPL, High Conservation Value (HCV) Assessment and Social Impact Assessment (SIA) in compliance with RSPO Criteria 7.1 and 7.3 on new planting.

The area of PT TI undergoing New Planting Procedures is 2,911 hectares as indicated in the Location Permit (Izin Lokasi) No.108 dated 1st March 2012 and is renewed in April 2014 (No. 297) . It is situated in subdistrict of Teluk Bayur, Berau District. In addition, the company has also obtained Plantation Business Permit (IUP) No. 405 Tahun 2014 dated 10 June 2014 from the Regent of Berau, stating that the acquired area is 2,888 ha, of which 2,060 ha is for parent company (Inti), 283 ha is allocated for river riparian and 545 ha for smallholder scheme (Plasma).

The geographical location of PT TI is 117⁰16'00" East and 02⁰04'00" North in the subdistrict of Teluk Bayur. The forestry map of East Kalimantan (SK No.943/Menhut-II/2013) indicated that PT TI is in Other Usage Area (Area Penggunaan Lain-APL) and thus outside the forest area (Kawasan Hutan). According to SEIA and HCV assessment reports , the concession area does not have any peat soil.

The eastern part of PT TI is surrounded by transmigration agricultural land and KKPA Laba Sari and padi fields.Two villages are located in this area viz Desa Labanan Jaya and Desa Labanan Makmur.On the western part is the community agricultural land. Two villages are located in this area, viz Labanan Makarti and Dusun Seduung.The northern region is bordered by River Segah whereas a part of southern region is cut across by a road leading to Samarinda. It is also occupied by a village named Tumbit Melayu.

Summary Report of Planning and Management of SEIA, SIA and HCV in PT Tekukur Indah

The SEIA was conducted by PT. Integral Multi Talenta and the report (No.197/2014) was approved by Regent of Berau on 20 March 2014. Environmental Permit (Izin Lingkungan) was also approved by Regent of Berau on 20th March 2014.

HCV & SIA assessments were conducted by Aksenta and reports were completed in June 2013 and May 2013, respectively. All the HCV members who conducted the HCV assessment are RSPO-approved assessors.

The HCV assessment clearly indicated that PT TI:

- is not situated in primary forest
- there is no peat soil
- is not a protected area

The results of the HCV study showed that there are 2 types of HCV found in PT TI concession area. They are HCV 1 (species diversity) and HCV 4 (ecosystem services). HCV 2 (landscape-level ecosystem), HCV 3 (ecosystems and habitats), HCV 5 (community needs) and HCV 6 (cultural values) were not found. The total HCV area identifies is 129.7 ha or 4.5% of the total area of 2,888 ha.

Element HCV 1 covers threatened and endangered species like proboscis monkey, gibbon, pangolin, otter civet and flat-headed cat.

The 7 vulnerable species identified are borneon slow loris, malayan sun bear, marbled cat, small-clawed otter, smooth-coated otter and bearded pig.

Element of HCV 4.1 (as vital water catchment areas) involves flood banks of river like Sg Segah, Sg Seduong, Sg Lapungan, Sg Niram, Sg Longban, Sg Semuda Kira and Semuda Kanan. Banks of Sg Lapungan and Sg Tahap serves as areas of erosion and sedimentation control (HCV 4.2). HCV 4.3 was not found in PT TI.

The Social Impact Assessment study indicated that there is a potential significant impacts towards the local communities due to the presence of PT TI. The immediate positive impact is the recruitment of local

Summary Report of Planning and Management of SEIA, SIA and HCV in PT Tekukur Indah

workers to participate in plantation development such as land clearing and planting. Another potential positive impact is the impending implementation of Corporate Social Responsible (CSR) activities by PT TI for the local communities. A negative impact cited in the study is the impact of clearing land has on the surrounding areas. For this reason, a program to mitigate this potential impact will be implemented by PT TI to comply with requirements as indicated in the SEIA report.

From the Social Environmental Impact Assessment (UKL-UPLA) study conducted, it can be concluded that there is potential impact by the presence of PT TI towards the environmental impact to the area. The possible environmental and social impacts that can occur in this project can be divided into 4 phases, Pre-development, Land Development, Operational and Post Development stages. These potential impacts on the local community can be broadly summarised as follow: deterioration of air and water quality, increase in noise level, increase in surface run-off, increase in erosion and sedimentation. Mitigation and Management Plan have been drawn up to minimise these potential impacts.

2. Reference Documents

2.1 List of Reports

(i) Report of Social Environmental Impact Assessment (UKL-UPL) for PT Tekukur Indah by Integral Multi Talenta approved by Regent of Berau on 20 March 2014.

(ii) Report of HCV Assessment for PT Tekukur Indah by Aksenta dated June 2013.

(iii) Report of SIA for PT Tekukur Indah by Aksenta in May 2013.

Summary Report of Planning and Management of SEIA, SIA and HCV in PT Tekukur Indah

2.2 List of Legal Documents, Regulatory Permits and property Deeds

No.	Document	Issued By	No. & Date	Note
1	Location Permit (Izin Lokasi)	Regent of Berau, 2888 ha	No.108 dated 1st March 2012	Renewed: No. 297 dated 28 April 2014
2	Plantation Business Licence (Izin Usaha perkebunan)	Regent Berau	No. 405 dated 10 June 2014	
3	UKL-UPL (SEIA)	Regent Berau	SK Bupati Berau No.196 dated 20 March 2014	
4	Environmental Permit	Regent Berau	SK Bupati Berau No.197 dated 20 March 2014	
5	Company Registration (Tanda Daftar Perusahaan Perseroan Terbatas)	Badan Pelayanan Perijinan Terpadu, Pemerintah, Kabupaten Berau	170450022 2 dated 14 March 2012	

Summary Report of Planning and Management of SEIA, SIA and HCV in PT Tekukur Indah

6	Taxpayer Notification No.	02.033.765.5-727.000	-	-
7	Akta Pendirian	Akta No.31 Tanggal 18 Jaunuary 2007 Notaris Sony Thio,SH Berau	18 January 2007	
8	Pengesahan Akta Pendirian	SK Kemenkumham No.13-00165HT.01.01-TH.2007		

Summary Report of Planning and Management of SEIA, SIA and HCV in PT Tekukur Indah

2.3 Location Map of PT Tekukur Indah – Landscape & Project Levels

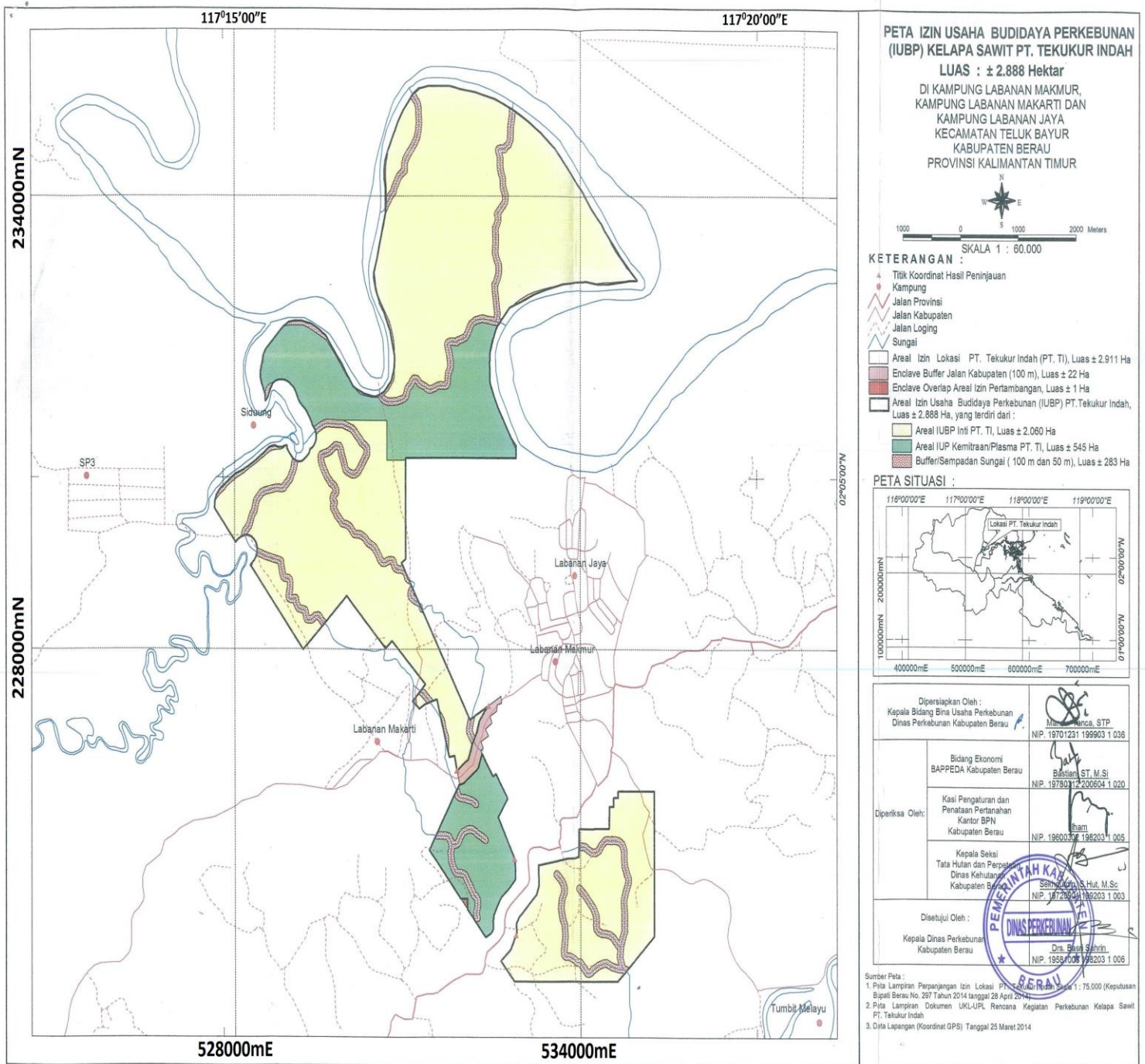


Figure 1. Location Map of PT Tekukur Indah-Project Area

Summary Report of Planning and Management of SEIA, SIA and HCV in PT Tekukur Indah

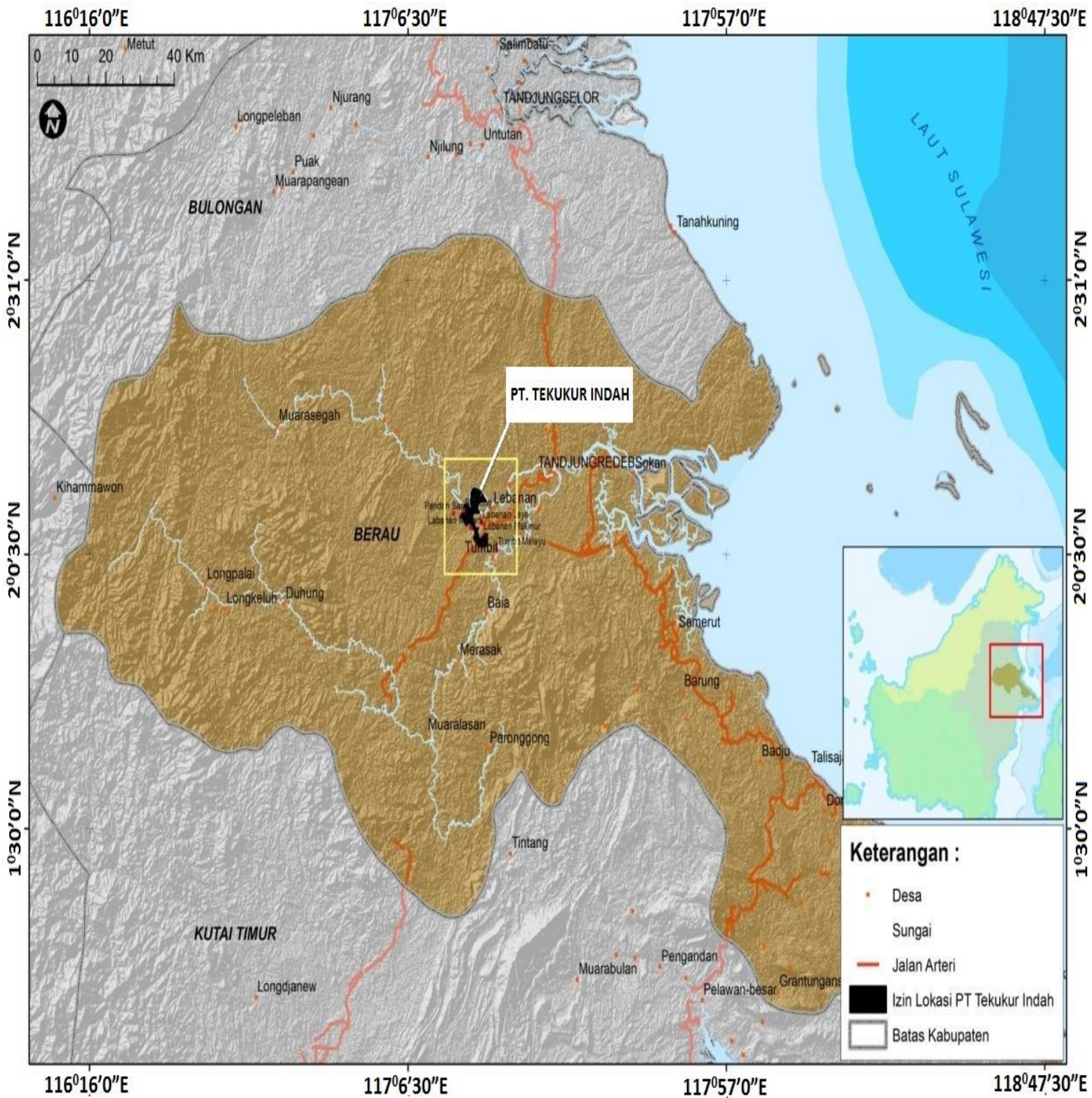


Figure 2. Landscape Map of PT Tekukur Indah

Summary Report of Planning and Management of SEIA, SIA and HCV in PT Tekukur Indah

2.4 Area of New Plantings and Time-Plan for new Plantings

The development plan of PT TI has incorporated the findings from SEIA (AMDAL) conducted by PT Integral Multi Talenta , HCV Assessment and Social Impact Assessment conducted by Aksenta. This plan has been drawn up and is covered under Summary Report of Planning and Management of new plantings.

The total area allocated in the Plantation Business Permit is 2,888 ha, of which 2,060 ha will be developed as the company plantation, 283 ha is allocated for river riparian and 545 ha for smallholder scheme (Plasma).

After the New Planting Procedures has been approved by RSPO, land clearing and planting will commence in 2014 and is programmed to be completed by 2016 as shown in Table 1 and Figure 3..

Table 1. Program of Land Clearing and Planting in PT TI

No.	Financial Year	Land Clearing (ha)	Planting (ha)	Remarks
1	2014/15	1300	1000	Inti +KKPA
2	2015/16	1305	1605	Inti +KKPA
	Total	2605	2605	

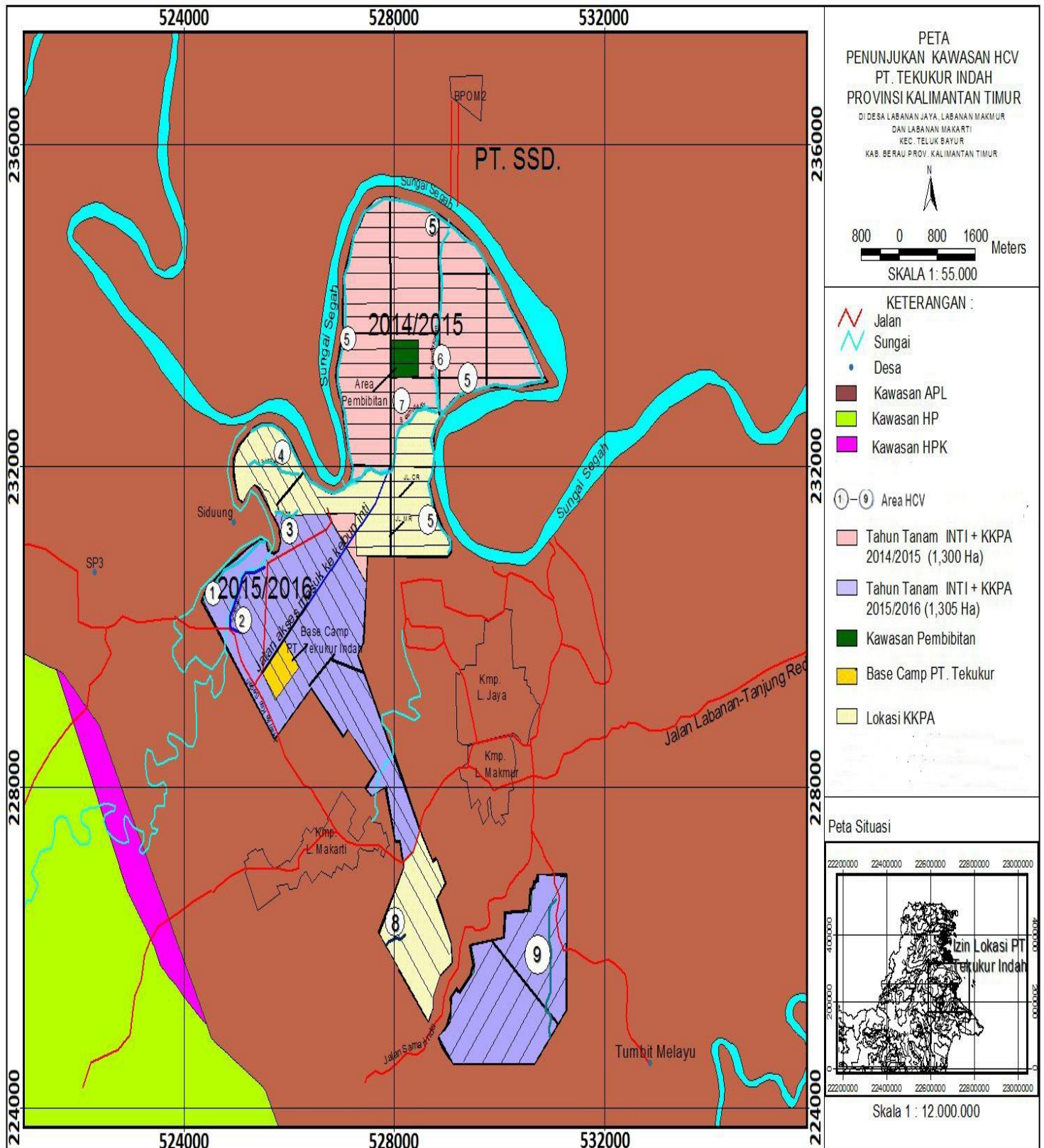
Note: 1. Parent Co. (Inti) = 2,060 ha

2. Plasma (KKPA) = 545 ha

 2,605 ha

Summary Report of Planning and Management of SEIA, SIA and HCV in PT Tekukur Indah

Figure 3. Map indicating Land Clearing, Planting Program and HCV Areas of PT TI



Summary Report of Planning and Management of SEIA, SIA and HCV in PT Tekukur Indah

3. SIA and HCV Mangement & Planning Personnel

3.1 Orgsanisation Information and Contact Person

Company Name	PT Tekukur Indah
Parent Company	Batu Kawan Berhad
Address	Jl Marsma Iswahyudi, RT 8 Kel Rinding, Kec Teluk Bayur, Kabupaten Berau, Kalimantan Timur
Office Contact No.	0554-2027064
RSPO Membership No.	1-0014-04-000-0
Person-In Charge	Hj Bakri Jamaluddin
Email	Bakri.j@klk.com.my
Position	Production Director
Capital Status	PMA (Foreign Investment Company)
Taxpayer No.	02.465.142.4-721.000
Status Concession Area	Izin Lokasi; IUP; AMDAL
New Planting Area	2888 ha

3.2 Personnel involved in Planning and Management of SEIA, SIA and HCV

Those involved in the planning and implementation will be the Production Director, Estate Manager, Human Resources Manager and Sustainability personnel.

Summary Report of Planning and Management of SEIA, SIA and HCV in PT Tekukur Indah

3.3 Stakeholders to be involved

Early public consultation was conducted during SEIA in order to obtain feedback from the various relevant stakeholders prior to land acquisition and land compensation. This process is in line with Free Prior Informed Consent (FPIC).

Another round of public consultation was conducted by Aksenta on 1/2/2013 and were attended by 44 stakeholders which included employees of PT TI, leaders of cooperatives (KKPA), community leaders, village chiefs, district representatives, and government agencies.

The list of stakeholders is shown in Table 2 below.

Table 2. List of Key Stakeholders of PT Tekukur Indah

Badan Hukum	Kontak dan Alamat	Telepon
BPJS Ketenagakerjaan Berau	Ibu Helen, Jl. H. Isa III No.89	HP:085247532898 Tel:0554-21976
Disnakertrans, Berau	Bpk Yossy, Jl. Dr Murjani No.96, Tj Redeb	085250957651 Tel:0554-21139
Dinas Perkebunan Berau	Bpk Yulianto, JIDr Murjani No.82	Tel:0554-21139
Badan Lingkungan Hidup Berau	Bpk Zulkifi, Jl APT, Pranoto No.10, Tj Redeb	HP:0811594395 Tel:055421157
Dinas Pemadam Kebakaran	Bpk Darno, Jl. Pemuda, Tj Redeb	HP:081346257917 Tel:0554-22525
Dinas Kehutanan Berau	Bpk Warista, Jl. Pulau Sambit, Tj Redeb	HP:082254400543 0554-22012
Diskoperindag Berau	Bpk Warsita, Jl. Dr. Murjani, Tg Redeb	Tel:0554-21026
RS. Pemda Berau "Abdul Rival"	Jl. Pulau Panjang Tg Redeb, 77311	0554-21098
Puskesmas	Bpk Aceng	081250317500
Pospol Labanan	Bpk Dirman	081350773828
Polres Berau	Jl. Pemuda, No.673, Tj	Tel:0554-21414

Summary Report of Planning and Management of SEIA, SIA and HCV in PT Tekukur Indah

	Redeb, Berau	
Pemilik Kecil/Desa/Masyarakat lokal	Kontak dan Alamat	Telepon
Kantor Kecamatan Teluk Bayur	Hj.Siti Hasanah, SE	08125401670
Kepala Kampung Labanan Jaya	Rahmat Kholis	081252003870
Kepala Kampung Labanan Makmur	Nasori	085250317500
Kepala Kampung Labanan Makarti	Mudawi	081258497754
Tokoh Masyarakat	Eko Wiyono	08125422207
Kontraktor Land Clearing	Kontak dan Alamat	Telepon
PT MJA	Bpk Supriadi, ST, Jl Marsma Iswahyudi Rinding, Teluk Bayur	0811763334
Lembaga Swadaya Masyarakat (LSM)	Kontak dan Alamat	Telepon
The Nature Conservancy (TNC)	Jl. Cempaka 2, No.7 RT.7 Tj Redeb, Berau	0554-23388

4. Summary of Management and Mitigation Plans

4.1 Summary of Social Impact Assessment Management and Mitigation Plan

Findings of SIA and SEIA studies showed that there are potential negative impacts on local community due to the development of PT TI. For this reason a Management and Mitigation Plans in accordance with SEIA & SIA is drawn up to prevent or mitigate the impacts.

Summary Report of Planning and Management of SEIA, SIA and HCV in PT Tekukur Indah

Table 3. Social Management and Mitigation Plans of PT Tekukur Indah

No.	Objective	Activity	Monitoring	Person-In-Charge
1	To hold periodic meeting with relevant to foster communication	1.To conduct initial socialisation on land acquisition and compensation with local community.	2013 -Done	1.Pak Damin 2.Consultant SEIA 3.Humas
		2.To conduct more intensive communication with local community through social activities like sports, religious functions etc	1x6 month	1.Manager, TI 2.Humas
		3.Settle land issue between Lahan Usaha (Transmigration land) , Laba Sari Koperasi and Nasional Land Body (BPN)	1x 6 month from 2014-2015	1.Manager, TI 2.Humas
		4.To give local priority over outsiders on employment	1x3 month	1.Manager, TI 2.Humas
		5.To provide villages information regarding job opportunity	1x3 month	1.Manager, TI 2.Humas
2	To identify stakeholders	1.To identify and map relevant stakeholders 2.To identify new stakeholders 3.To communicate regularly with stakeholders pertaining to company's policies	2014-Done 1x12 month 1x12 month	1.Manager, TI 2.Humas
3	To implement Corporate Social Responsibility (CSR)	1.To identify local needs through consultation 2.To implement CSR based on CSR program	1x12 month	1.Production Director 2.Manager, TI 3.Humas
4	To provide basic amenities to workers and upgrade public facilities	1.To identify specific needs through consultation 2.To provide basic needs to workers and community within the means of the company.	1x12 month	1.Production Director 2.Manager, TI 3.Humas
5	To communicate with contractors & the community prior to land clearing	1.To communicate with the community on potential negative impacts like noise , water and air pollutions prior to land clearing 2.To closely supervise land clearing by contractors to ensure Good Agricultural Practices is adhered to.	Until land clearing is completed	1.Manager, TI 2.Humas
6	To monitor & evaluate environment	1.To conduct activities in line with requirements of SEIA (UKL-UPL)	1x1 month	1.Manager, TI 2.Humas
		1.To send water and soil samples for laboratory tests 2.To conduct air-quality test 3.To evaluate test results of water, air and soil samples 4.To carry out corrective measures based on test results	Frequency in compliance with SEIA	1.Manager, TI 2.Humas 3.Sustainability team

Summary Report of Planning and Management of SEIA, SIA and HCV in PT Tekukur Indah

7	To prepare report as per requirements of SEIA	1.To prepare reports and submit to Environmental Department on a periodical basis	1x6 month	1.Manager, TI 2.Sustainability team
---	---	---	-----------	--

4.2 Summary of HCV Management and Mitigation Plan

The development of HCV management and mitigation plans is based on results of HCV assessment report which is conducted by Aksenta and are summarised in Table 4.

Table 4. HCV Management and Mitigation Plans of PT Tekukur Indah

No.	Objective	Activity	Monitoring	Person-In-Charge
1	To protect endangered and vulnerable species	1. To identify and map the presence or spread of 5 endangered species: proboscis monkey, bornean gibbon, pangolin, otter civet, flat-headed cat and 7 vulnerable species: bornean slow loris, sun bear, marbled cat, pig-tailed macaque, small-clawed otter, smooth-coated otter & bearded pig	1x3 month	-Manager, TI -Sustainability team
		2.To conduct survey on endangered & vulnerable species	1x3 month	-Manager, TI -Sustainability team
		3.To conduct socialisation to local community on the importance of endangered and vulnerable species	Annually-1x12 month	-Manager, TI -Sustainability team
2	To protect habitat of endangered & vulnerable species	1.To monitor HCV areas to ensure that they are rehabilitated and protected in terms of vegetative coverage and land use	Annually-1x12 month	-Manager, TI -Sustainability team
		2.To conduct socialisation to local community on the importance of protecting endangered and vulnerable species and their habitats.	Annually-1x12 month	-Manager, TI -Sustainability team

Summary Report of Planning and Management of SEIA, SIA and HCV in PT Tekukur Indah

3	To protect protected species and prevent illegal hunting	1.To socialise to own workers and local community on “No Hunting” policy.	Anually-1x12 month	-Manager, TI -Sustainability team
		2.To put up appropriate signboards related to no-hunting policy.	Before commencement of land clearing	-Manager, TI -Sustainability team
	3.To identify and patrol areas prone to illegal hunting.	1x1 month	-Manager, TI	
	4.To monitor & record number of cases of illegal hunting and inform relevant authorities	Whenever there are cases	-Manager, TI	
	5.To facilitate and create awareness among workers and local community on the importance of protecting protected species by returning captured species to relevant authority.	Whenever there are cases	-Manager, TI	
4	To minimise soil erosion in HCV areas and protect riparian	1.To demarcate HCV and riparian areas and erect appropriate signages	Before commencement of land clearing	-Manager, TI
		2.To closely supervise land clearing contractors	Before commencement of land clearing	
		3.To adopt Good Agricultural Practices (GAP) on New Planting	To conduct regular supervision	-Manager, TI
		4.To monitor areas prone to erosion and take corrective measures as per GAP	To conduct regular supervision	-Manager, TI
		5.To clean up rivers of debris and other obstacles that can hinder free flow of water	Annually-1x12 month	-Manager, TI
5	SOP, HCV training and monitoring checklist	1.To ensure that SOP on management of HCV is available and reviewed if and when necessary	If and when necessary	-Sustainability team
		2.To conduct HCV training on a regular basis	1x12 month	-Sustainability team
		3.To build capacity & human resources related to HCV	On going process	-Sustainability team

**Summary Report of Planning and Management of SEIA, SIA and
HCV in PT Tekukur Indah**

		4.To use standardised forms for monitoring related to HCV	Available and will be implemented	-Manager, TI -Sustainability team
--	--	---	-----------------------------------	--------------------------------------

**Summary Report of Planning and Management of SEIA, SIA and
HCV in PT Tekukur Indah**

5. Internal Responsibility

This document is the Summary Report of High Conservation Value (HCV) and Social Impact Assessment (SIA) conducted by Aksenta and SEIA conducted on PT Tekukur Indah (PT TI).

Aksenta
(PT Gagas Dinamiga Aksenta)

Management of
PT Tekukur Indah



A handwritten signature in black ink, consisting of a long horizontal stroke followed by a stylized, cursive signature.

Sujatnika
Managing Director

Haji Bakri Jamaludin
Production Director