

Internal Hotspot Monitoring Weekly Report for 2023

Week 4 – September 2023

25 September – 01 October 2023
Malaysia & Indonesia



Overview



1. P&C 2018 & RSPO ISH Standard 2019 – Related Criteria
2. Weekly Analysis
 - i. Comparison to 2022: All Hotspots in MY & ID
 - ii. Comparison to 2022: Hotspots within RSPO Member Concession
 - iii. Weekly trend from the last 10 weeks
3. Weekly Hotspot Map
 - i. Hotspot Distribution Map
 - ii. Hotspot Distribution by Peatlands and Landuse Map
 - iii. Hotspot Persistency Map
4. Hotspots for Week 4 - September 2023
 - i. RSPO vs. non-RSPO member comparison
 - ii. Hotspots Distribution by States/Region
 - iii. Hotspots in RSPO members (State/Province)
5. ASEAN Weather Outlook

RSPO Principles & Criteria 2018

Related Criteria

There is **no use of fire for pest control** unless in exceptional circumstances

7.1.3

Criteria 7.1

The unit of certification **does not use open fire for waste disposal.**

7.3.3

Criteria 7.3

The unit of certification **establishes fire prevention and control measures** for the areas directly managed by the unit of certification

7.11.2

Criteria 7.11

RSPO ISH Standard 2019

Related Criteria

Smallholders complete training on best management practices (BMPs) for peat. The group has an **action plan to minimise risk of fire**, to apply BMPs for planting on peat and manage water systems in the certification unit.

4.4 MSA

Criteria 4.4

Smallholders **implement** the group's **action plan based on BMPs**, including **fire** and water management, and monitoring of subsidence rate for existing planting on peat.

4.4 MSA

Criteria 4.4

Fire is not used on the oil palm plot **for preparing land** or for **pest control**, nor open fire for **waste management** on the farm.

4.6 E,
4.6 MSA,
4.6 MSB

Criteria 4.6



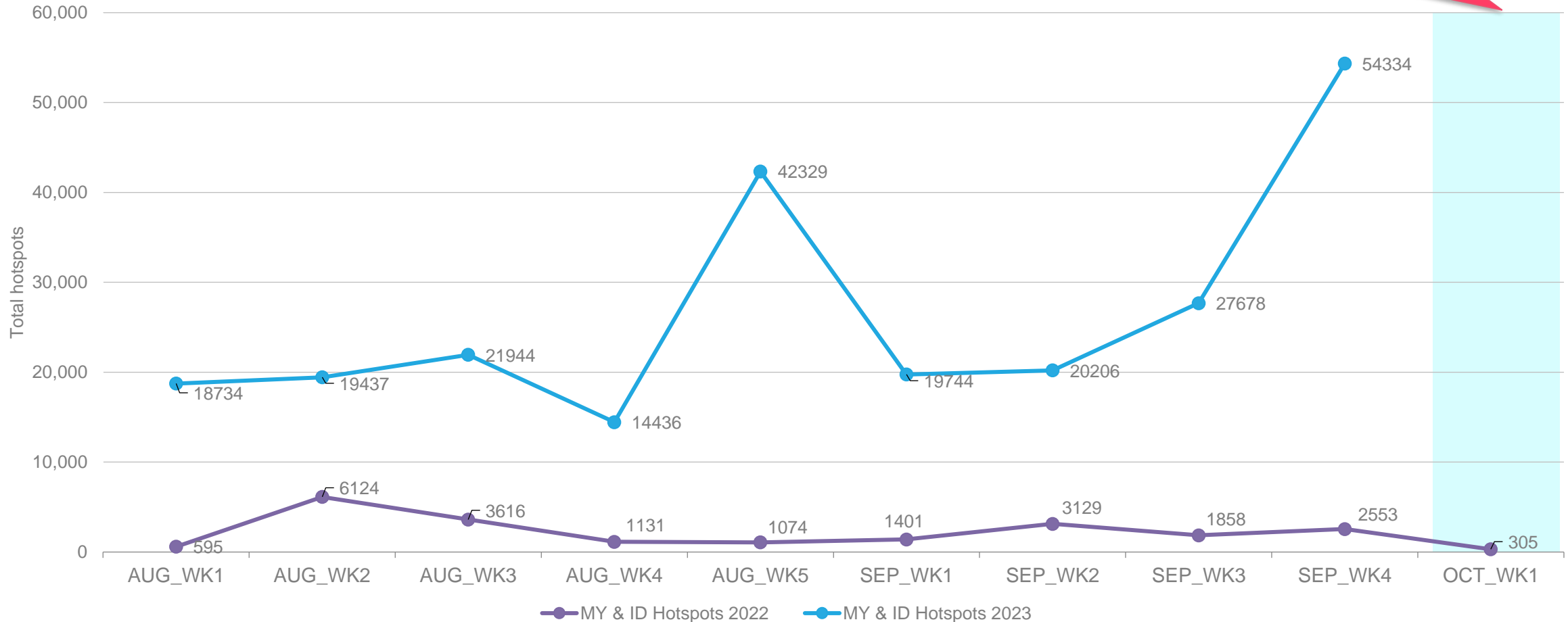
Weekly Analysis

Comparison to 2022 trend
Comparison to previous 10 weeks

Comparison to 2022: All hotspots



The number of hotspots for next week (October 2023: week 1) is predicted to be **increase** in the region as forecasted

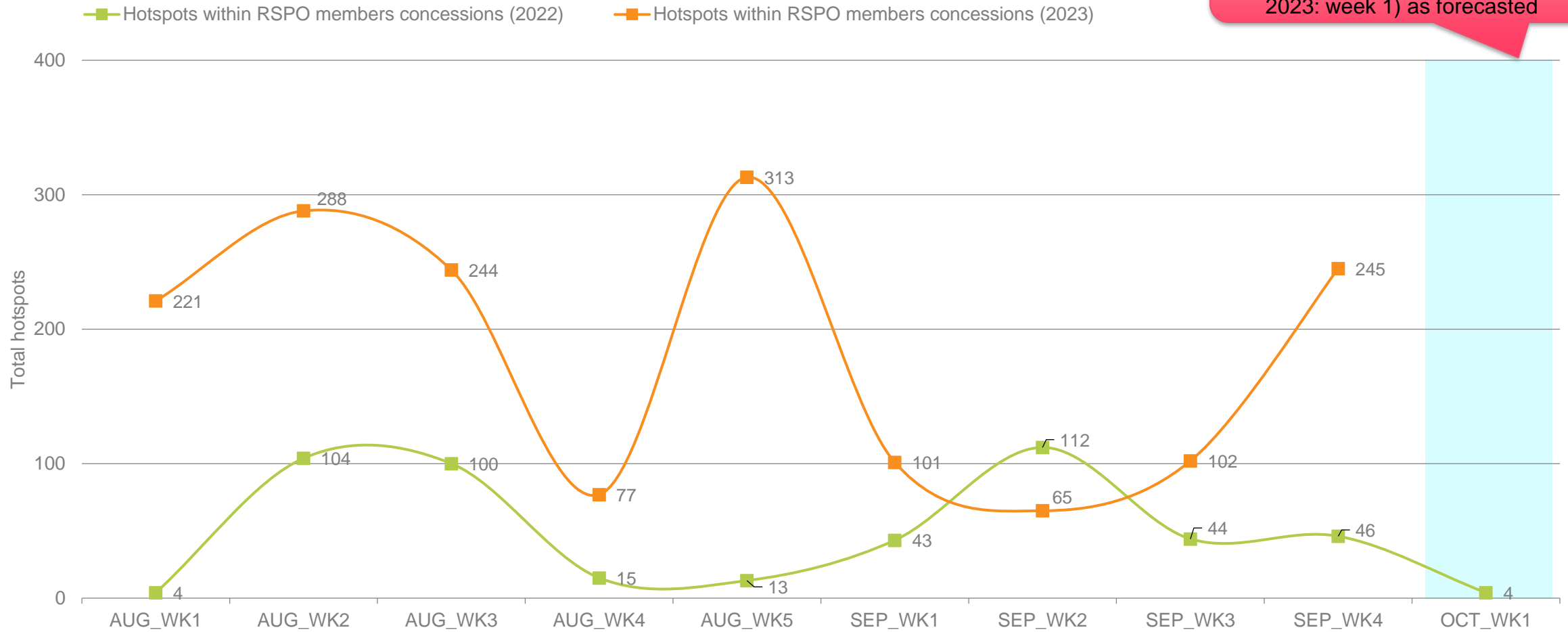


25 September 2023 – 01 October 2023

Comparison to 2022: Hotspot within RSPO Members Concessions



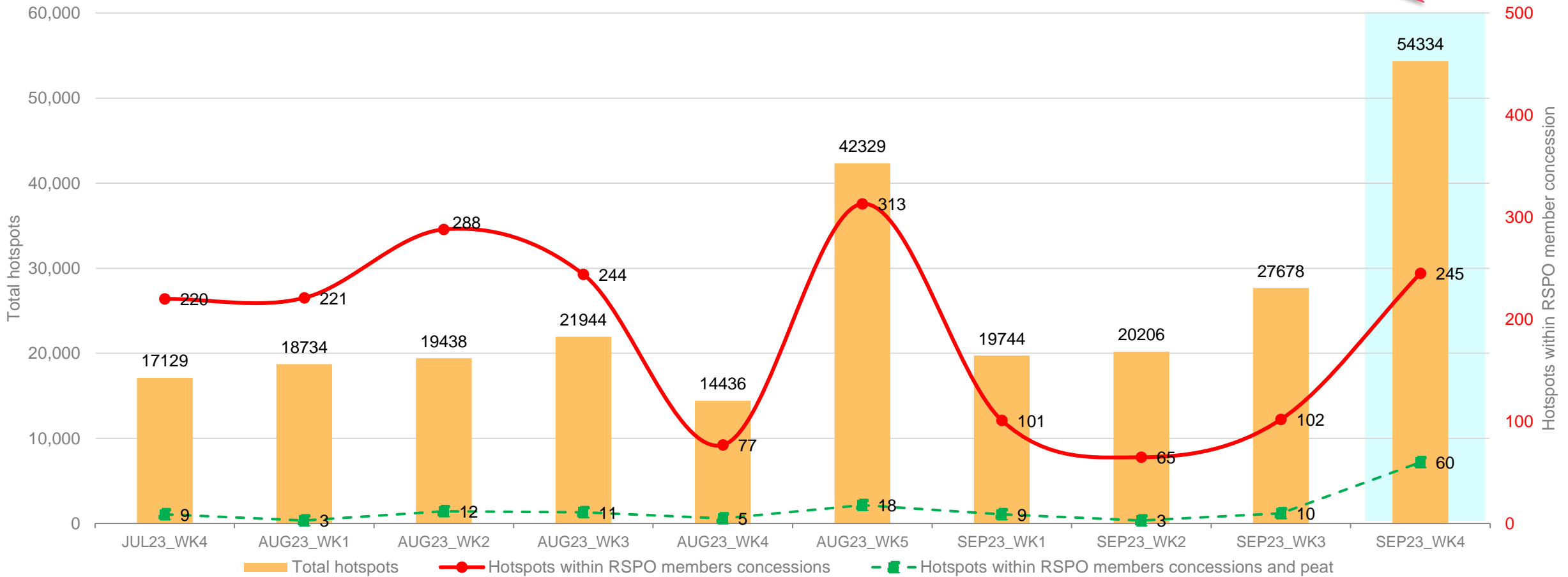
The number of hotspots within RSPO member is expected to be **higher** for next week (October 2023: week 1) as forecasted



Weekly trend from last 10 weeks



Higher in hotspot count than previous week



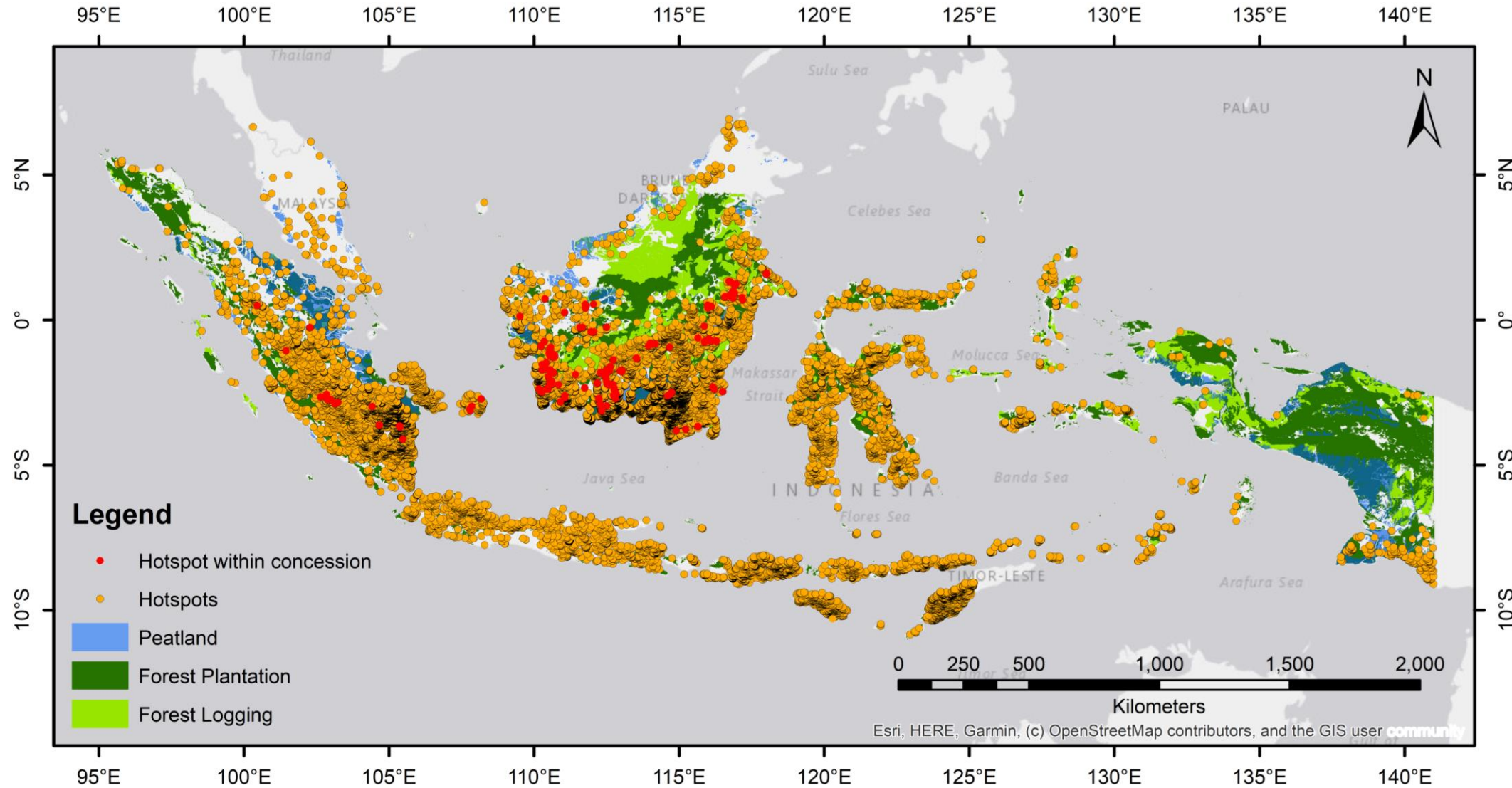


Weekly Hotspot Map

Malaysia & Indonesia



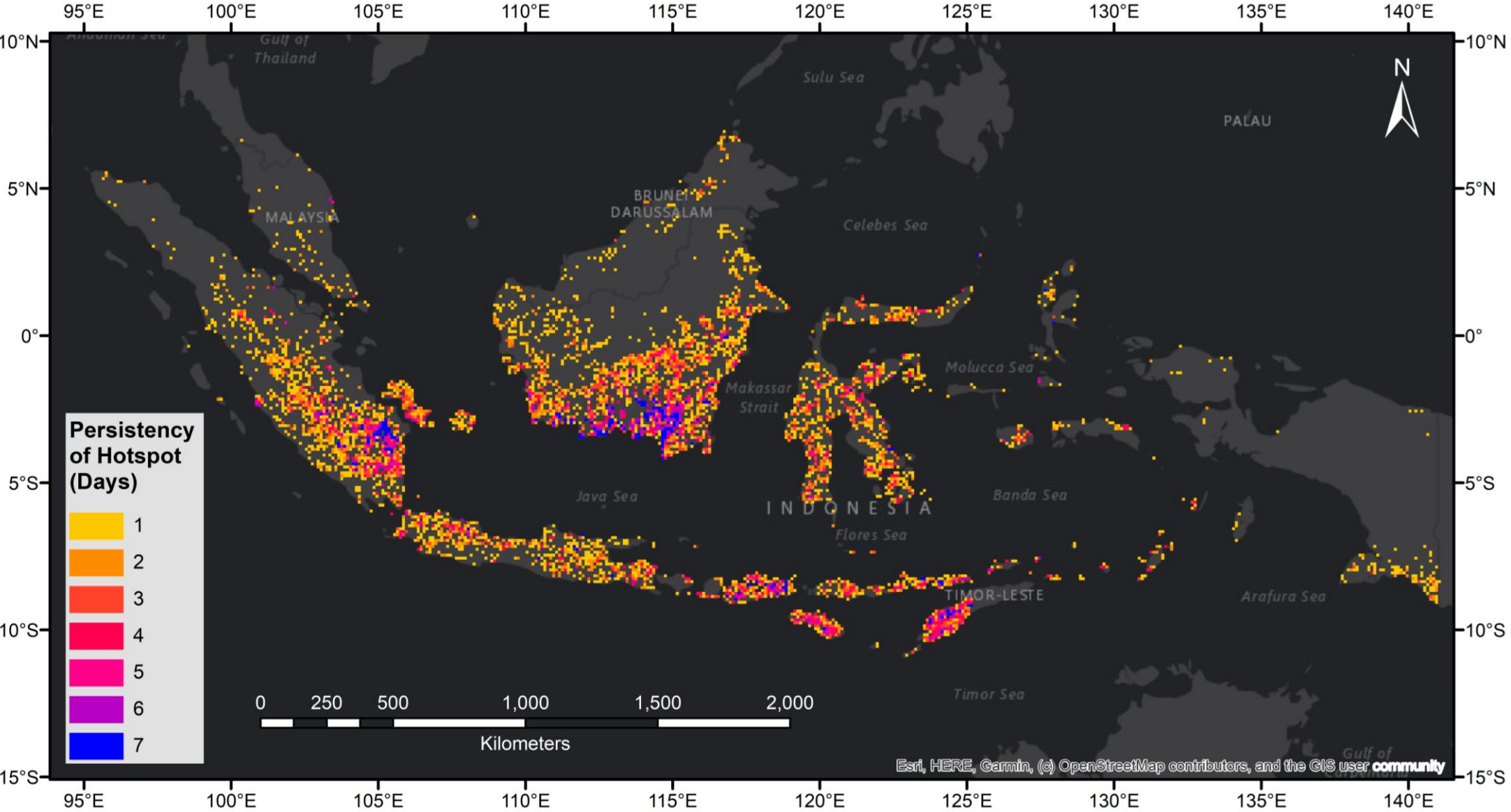
Hotspot Distribution by Peatland & Landuse Map



DATA	SOURCE
Hotspots	NASA FIRMS (https://firms.modaps.eosdis.nasa.gov/active_fire)
Peatland	World Resources Institute. "Peat lands". Accessed through Global Forest Watch on 17/11/2022. www.globalforestwatch.org
Forest Plantation	"Wood fibre concessions." Accessed through Global Forest Watch on 17/11/2022. www.globalforestwatch.org
Forest Logging	"Managed forest concessions." Accessed through Global Forest Watch on 17/11/2022. www.globalforestwatch.org



Hotspot Persistency Map



Each grid represents the number of days hotspots were detected within the 10km X 10km grid between 25 September 2023 – 01 October 2023

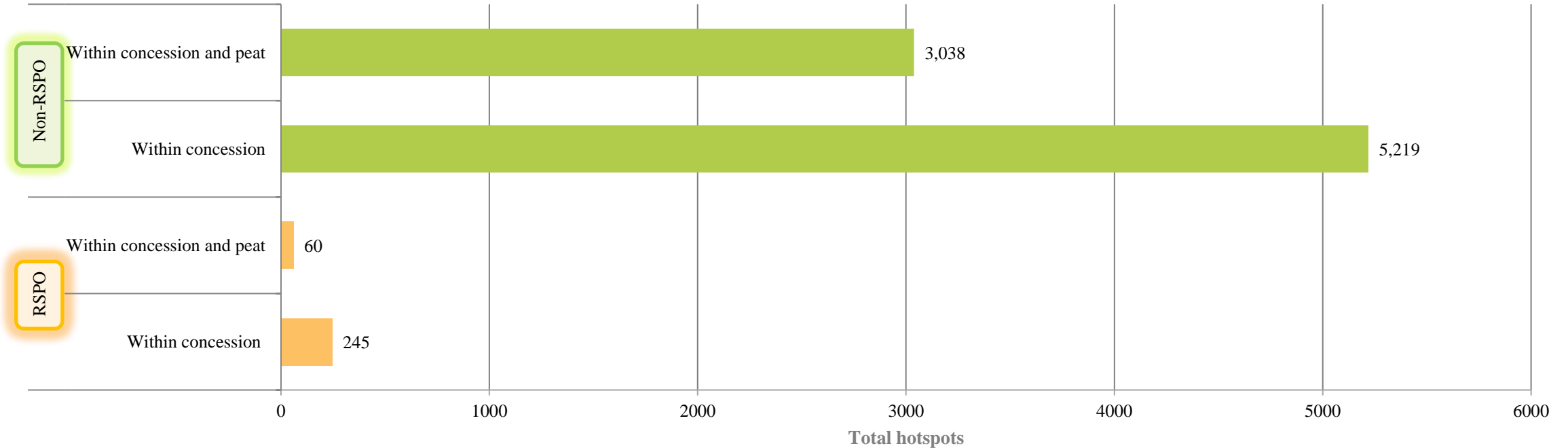
25 September 2023 – 01 October 2023



Week 4 - September 2023 Hotspot

Malaysia & Indonesia

RSPO vs non-RSPO comparison



Non-RSPO oil palm concession location data was derived from oil palm concessions dataset accessed through Global Forest Watch on 17/11/2022. www.globalforestwatch.org. The website states that this layer is a compilation of concession data from various countries and sources. The quality of these data can vary depending on the source. This layer may not include all existing concessions in a country, and the location of certain concessions can be inaccurate.

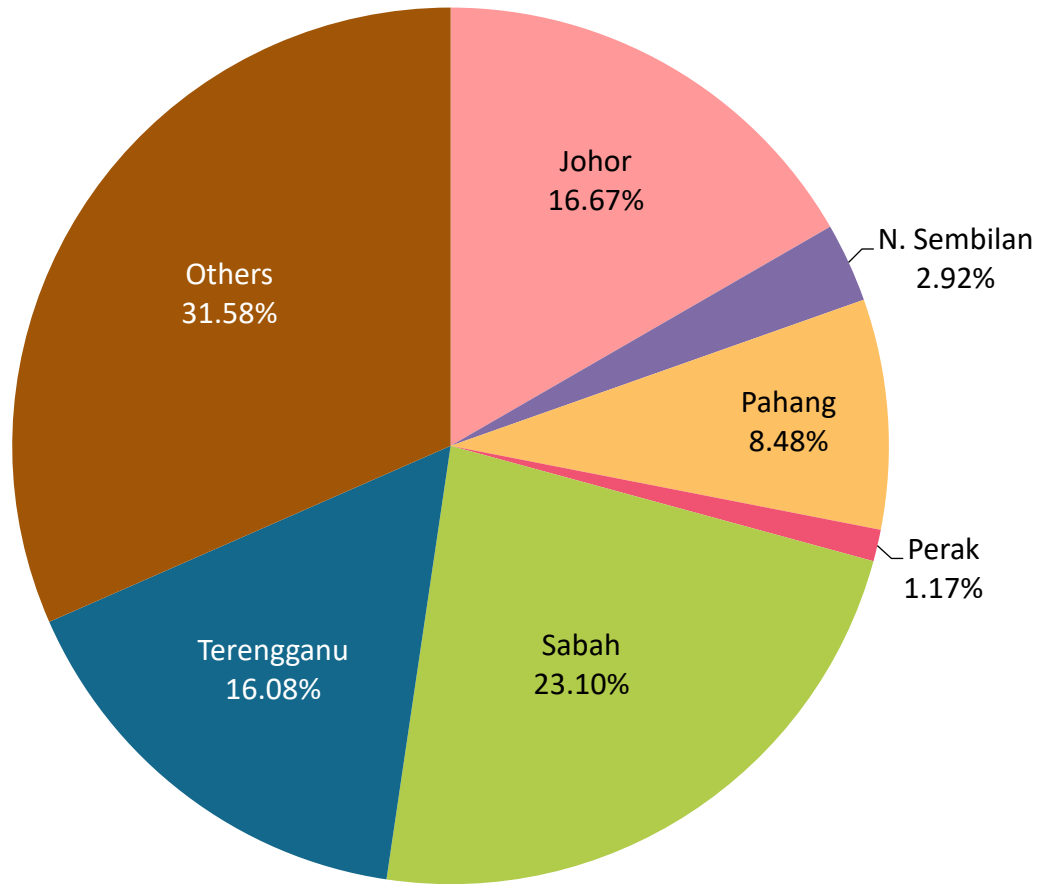
As such the data probably overstates the extent of oil palm plantations in some cases, as there are many licenses granted and the oil palm plantation has not been developed. In other cases, it may understate the extent of plantations as it does not take into account smallholders. Nevertheless, this appears to be the best data available of ALL oil palm in Indonesia.

The RSPO concession boundary data was overlaid with this data in the GIS and RSPO concessions were “clipped” out of this data, leaving only “non-RSPO” concessions.

Non-RSPO*: ~19,000,000 ha

RSPO: ~ 4,800,000 ha

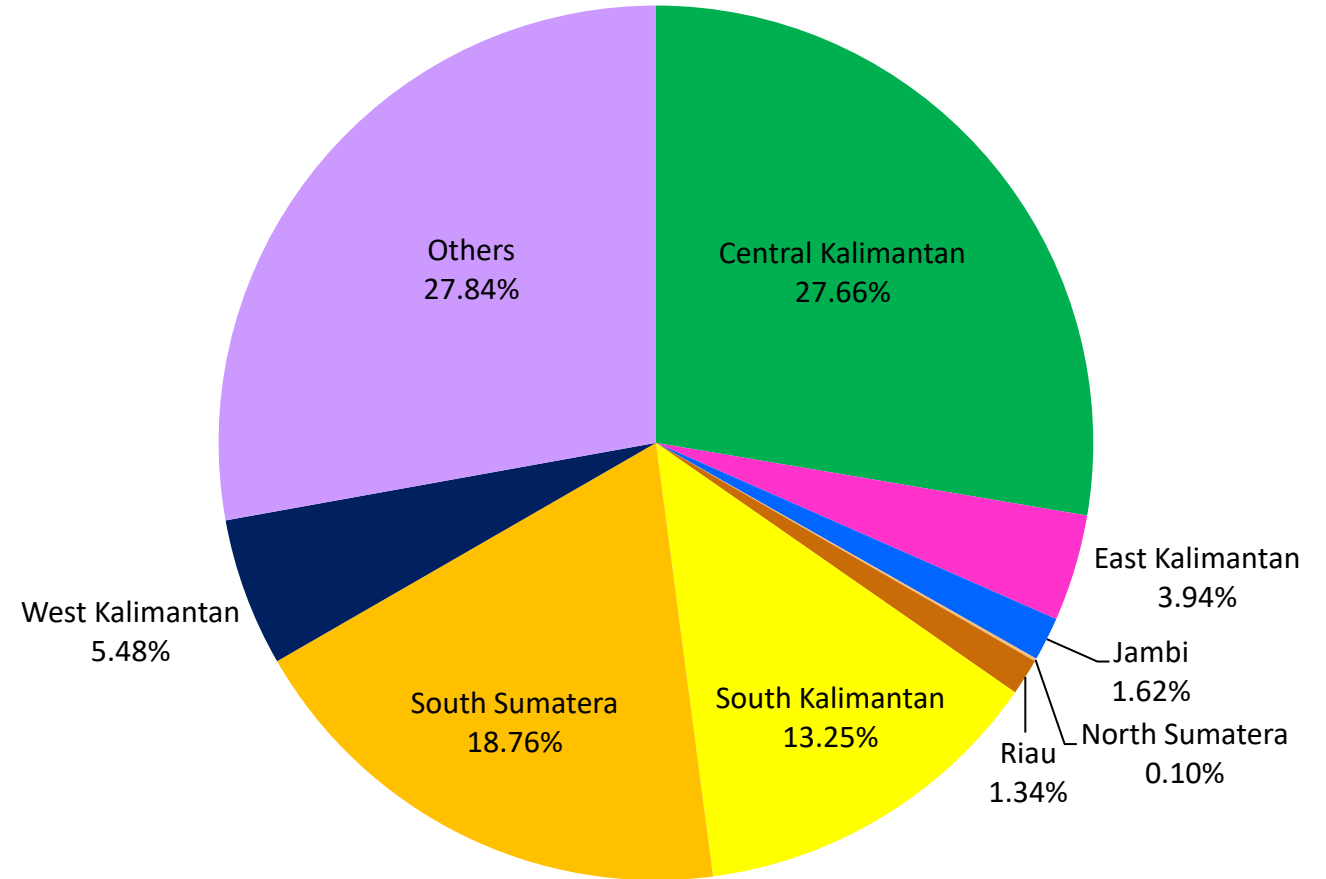
Distribution of Hotspots by State in Malaysia



STATE	TOTAL
Johor	57
Kedah	0
N. Sembilan	10
Pahang	29
Perak	4
Sabah	79
Terengganu	55
Others	108
Total	342

Distribution of Hotspots by Region in Indonesia

REGION	TOTAL
Central Kalimantan	14934
East Kalimantan	2128
Jambi	872
North Sumatera	56
Riau	726
South Kalimantan	7155
South Sumatera	10130
West Kalimantan	2961
Others	15,030
Total	53,992



Hotspots in RSPO members (State/Province)



No. of Member/s	Date of Acquisition	District / Regency	State / Province	Country	No. of Hotspots	Total no. of Hotspots
1	25-Sep-23	Katingan	Central Kalimantan	Indonesia	1	49
		Rokan Hulu	Riau		1	
	26-Sep-23	Ketapang	West Kalimantan		1	
		East Kotawaringin	Central Kalimantan		8	
	27-Sep-23	Katingan			3	
		East Kotawaringin	2			
	28-Sep-23	Ketapang	West Kalimantan		1	
		East Kotawaringin	Central Kalimantan		1	
	29-Sep-23	Katingan	Central Kalimantan		7	
		East Kotawaringin			4	
	30-Sep-23	Ketapang	West Kalimantan		1	
1-Oct-23			10			
1	25-Sep-23	Landak	West Kalimantan	Indonesia	1	1
1	25-Sep-23	Kapuas	Central Kalimantan	Indonesia	7	21
		Ketapang	West Kalimantan		1	
	26-Sep-23		1			
	27-Sep-23	Kapuas	Central Kalimantan		2	
	28-Sep-23	Ketapang	West Kalimantan		4	
	29-Sep-23		2			
30-Sep-23	Kapuas	Central Kalimantan	1			
1	25-Sep-23	East Kotawaringin	Central Kalimantan	Indonesia	1	16
		Sintang	West Kalimantan		1	
	26-Sep-23	Ketapang	Central Kalimantan		2	
		Seruyan			2	
	27-Sep-23	East Kotawaringin	West Kalimantan		2	
		Ketapang			1	
	28-Sep-23		Central Kalimantan		1	
		East Kotawaringin			1	
30-Sep-23	Seruyan	1				
1-Oct-23	East Kotawaringin	2				

Hotspots in RSPO members (State/Province)



No. of Member/s	Date of Acquisition	District / Regency	State / Province	Country	No. of Hotspots	Total no. of Hotspots	
1	25-Sep-23	Ketapang	West Kalimantan	Indonesia	1	3	
	27-Sep-23				2		
1	25-Sep-23	Mesuji	Lampung	Indonesia	1	41	
		Banyuasin	South Sumatra		1		
		Kapuas Hulu	West Kalimantan		3		
	26-Sep-23	East Kutai	East Kalimantan		2		
		Ketapang	West Kalimantan		1		
		Seruyan	Central Kalimantan		1		
		East Kotawaringin			2		
		Gunung MAS			1		
		27-Sep-23	Mesuji		Lampung		1
			Musi Rawas		South Sumatra		1
	Ketapang		West Kalimantan		1		
	Kapuas Hulu		Central Kalimantan		1		
	Seruyan				3		
	East Kotawaringin				1		
	28-Sep-23		Gunung MAS		East Kalimantan		1
			East Kutai		Bangka Belitung Islands		1
		Belitung	South Sumatra		2		
		Musi Rawas	Central Kalimantan		1		
		Seruyan	West Kalimantan		1		
		Gunung MAS			2		
		Ketapang			1		
		29-Sep-23	Kapuas Hulu		East Kalimantan		2
	East Kutai		Central Kalimantan		1		
Seruyan	1						
30-Sep-23	East Kotawaringin	Central Kalimantan		1			
	Gunung MAS		1				
1-Oct-23	East Kotawaringin	Central Kalimantan	1				
	Gunung MAS		2				
1	25-Sep-23	Ketapang	West Kalimantan	Indonesia	1	2	
	26-Sep-23				1		
1	25-Sep-23	East Kutai	East Kalimantan	Indonesia	4	5	
	26-Sep-23				1		
1	27-Sep-23	West Kotawaringin	Central Kalimantan	Indonesia	1	1	

Hotspots in RSPO members (State/Province)



No. of Member/s	Date of Acquisition	District / Regency	State / Province	Country	No. of Hotspots	Total no. of Hotspots
1	25-Sep-23	Lamandau	Central Kalimantan	Indonesia	1	14
		East Kutai	East Kalimantan		3	
	26-Sep-23	West Kutai			1	
		Berau	1			
		Seruyan	Central Kalimantan		1	
	30-Sep-23				1	
	1-Oct-23	Berau	East Kalimantan		3	
	1	25-Sep-23	Kutai Kartanegara		East Kalimantan	
26-Sep-23		2				
28-Sep-23		3				
1	25-Sep-23	North Musi Rawas	South Sumatra	Indonesia	2	10
	26-Sep-23				1	
	27-Sep-23				2	
	28-Sep-23				1	
	29-Sep-23				2	
	30-Sep-23				1	
	1-Oct-23				1	
	1				25-Sep-23	
26-Sep-23		East Kutai	3			
27-Sep-23			1			
28-Sep-23		West Kutai	1			
29-Sep-23			2			
30-Sep-23		1				
1	25-Sep-23	Ogan Komering Ilir	South Sumatra	Indonesia	1	9
	28-Sep-23	2				
	29-Sep-23	Seruyan	Central Kalimantan		1	
	30-Sep-23	East Kotawaringin			3	
	1-Oct-23				1	
	1-Oct-23	1				
1	26-Sep-23	Tanah Laut	South Kalimantan	Indonesia	1	3
	27-Sep-23				1	
	30-Sep-23				1	
1	26-Sep-23	Sekadau	West Kalimantan	Indonesia	1	1

Hotspots in RSPO members (State/Province)



No. of Member/s	Date of Acquisition	District / Regency	State / Province	Country	No. of Hotspots	Total no. of Hotspots	
1	26-Sep-23	North Kayong	West Kalimantan	Indonesia	1	7	
	27-Sep-23	Sanggau			1		
	28-Sep-23	West Kutai	East Kalimantan		2		
	1-Oct-23	Ketapang	West Kalimantan		1		
1	26-Sep-23	East Belitung	Bangka Belitung Islands	Indonesia	1	7	
	27-Sep-23	West Kutai	East Kalimantan		1		
		East Kotawaringin	Central Kalimantan		2		
	28-Sep-23	Belitung	Bangka Belitung Islands		1		
	30-Sep-23	West Kutai	East Kalimantan		1		
1	26-Sep-23	East Kotawaringin	Central Kalimantan	Indonesia	1	9	
					27-Sep-23		1
					28-Sep-23		1
	29-Sep-23	Ketapang	West Kalimantan		2		
	30-Sep-23				1		
	1-Oct-23				1		
1	26-Sep-23	Melawi	West Kalimantan	Indonesia	4	7	
	28-Sep-23	Dharmasraya	West Sumatra		1		
	1-Oct-23	Ketapang	West Kalimantan		2		
1	26-Sep-23	Kotabaru	South Kalimantan	Indonesia	1	2	
1	28-Sep-23	Paser	East Kalimantan	Indonesia	1	2	
1	26-Sep-23	Melawi	West Kalimantan	Indonesia	2	2	
1	27-Sep-23	Ogan Komering Ilir	South Sumatra	Indonesia	2	16	
	28-Sep-23				2		
	29-Sep-23				1		
	30-Sep-23				2		
	1-Oct-23	Ketapang	West Kalimantan		7		
1	29-Sep-23	East Belitung	Bangka Belitung Islands	Indonesia	1	1	
1	29-Sep-23	Indragiri Hulu	Riau	Indonesia	1	1	
25				Total Hotspots		245	

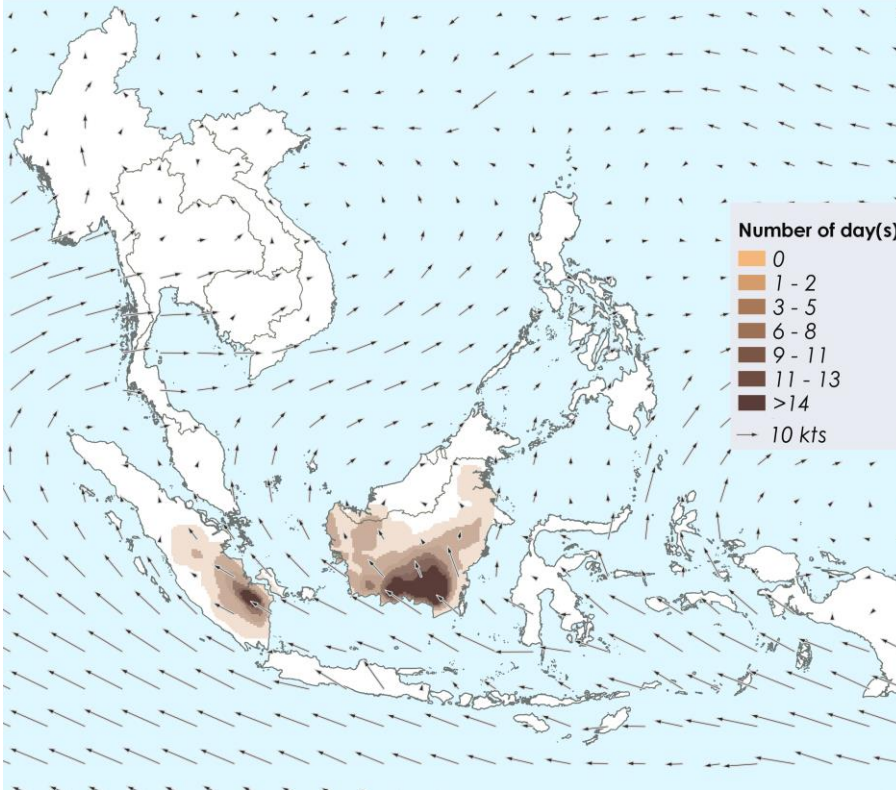


ASEAN Weather Outlook

Source: The ASEAN Specialised Meteorological Centre

Regional Weather & Haze Outlook

Haze Persistency (Sep 2023)



Alert Level

- LEVEL 0** Stay vigilant.
- LEVEL 1** Dry season for the Southern ASEAN region.
- LEVEL 2** Increasing risk of transboundary haze in Kalimantan. Escalating hotspot activities with moderate to dense smoke haze observed over 2 or more consecutive days; dry weather persisting; and prevailing winds blowing smoke haze from the hotspots towards neighbouring ASEAN countries.
- LEVEL 3** High risk of severe transboundary haze in the region. Significant and persistent hotspot activities with widespread moderate to dense smoke haze observed over 2 or more consecutive days; dry weather persisting; and prevailing winds blowing towards ASEAN countries.

In recent days, prevailing dry weather conditions over the southern ASEAN region have resulted in an escalation in hotspot and smoke haze activities. Based on satellite surveillance, moderate smoke haze was observed to emanate from clusters of hotspots detected in the western and southern parts of Kalimantan. Transboundary haze was observed to drift northwards from the hotspot clusters in West Kalimantan into western Sarawak in East Malaysia.

The prevailing dry weather conditions are forecast to continue over Kalimantan in the coming days, with the prevailing winds likely to blow from the southeast or southwest. Under these conditions, the hotspot and smoke haze situation could worsen with an increased risk of transboundary smoke haze occurrence.

While a few showers were observed over Peninsular Malaysia, Singapore, the northern parts of Sumatra and Borneo, dry conditions were observed over the rest of the southern ASEAN region. Several stations in Central and South Kalimantan, and central and southern Sumatra are reporting Unhealthy air quality with a few stations recording Very Unhealthy air quality.

Dry conditions are forecast to persist over **Java, Lesser Sunda Islands** and the **southern parts of Sumatra and Kalimantan** over the next few days. The elevated hotspot and smoke haze situation over the southern and central parts of Sumatra as well as the southern parts of Kalimantan is likely to continue under the expected prolonged dry conditions. **Risk of transboundary smoke haze** occurrence also remains in the southern ASEAN region.

Alert by RSPO: Transboundary Haze (Level 2)

For the following week, RSPO Secretariat would like to recommend the following measures to Members:



Dry Season Area

(Many parts of Southern ASEAN Region; especially at Java, Lesser Sunda Islands, and southern part of Sumatra and Kalimantan)

- Please alert to the Fire Danger Rating System (FDRS) indicator board especially in the fire prone area
- Supply appropriate well-maintained fire mitigation tools (fire extinguisher, fire truck)
- Establish of fire break (wide road, vacant land) within the planted area
- Inform workers and communities about the fire drill procedure
- Minimize outdoor activities and stay hydrated if the haze season occurred
- If haze occurred, wear respirator mask if outdoor activities is necessary.



Integrated Fire Management
Training conducted by PT Austindo
PT Austindo Nusantara Jaya Agri

Wet Weather Area

(as forecast for over Northern ASEAN region)

- High risk of surface runoff in the estate area which may result in erosion and landslide
- Stay vigilant of water level and keep informed on local news of the flood in high-risk area
- Tendency for the formation of road potholes, which may necessitate additional maintenance and repair costs.
- Stay inside during thunderstorms and blizzards. Stay off the landline phone and computer during a storm.
- Wear appropriate rain gear for employees working in the rain

Background image:
Fire fighting in action conducted by Daabon Group



Find out more at
www.rspo.org