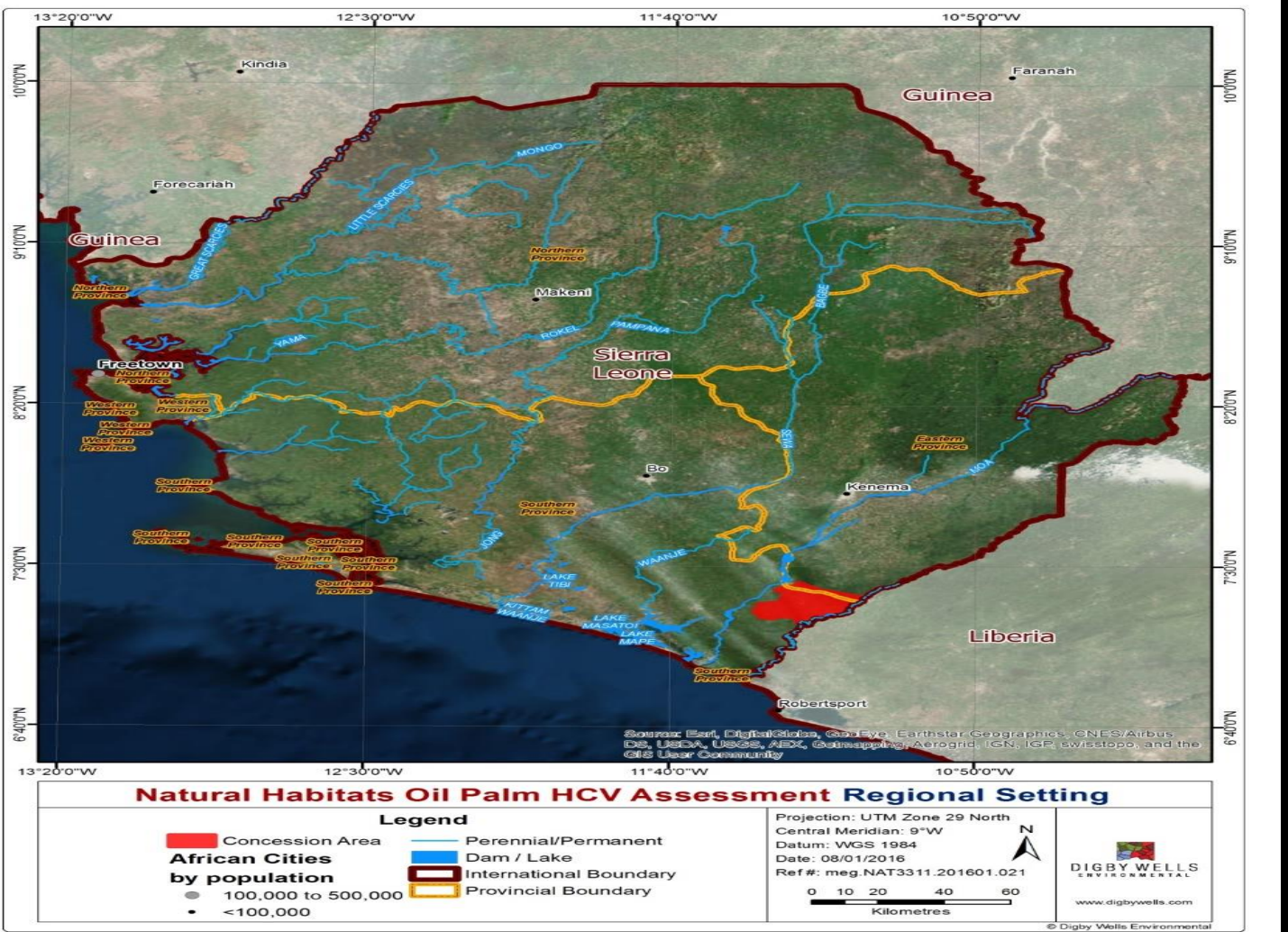


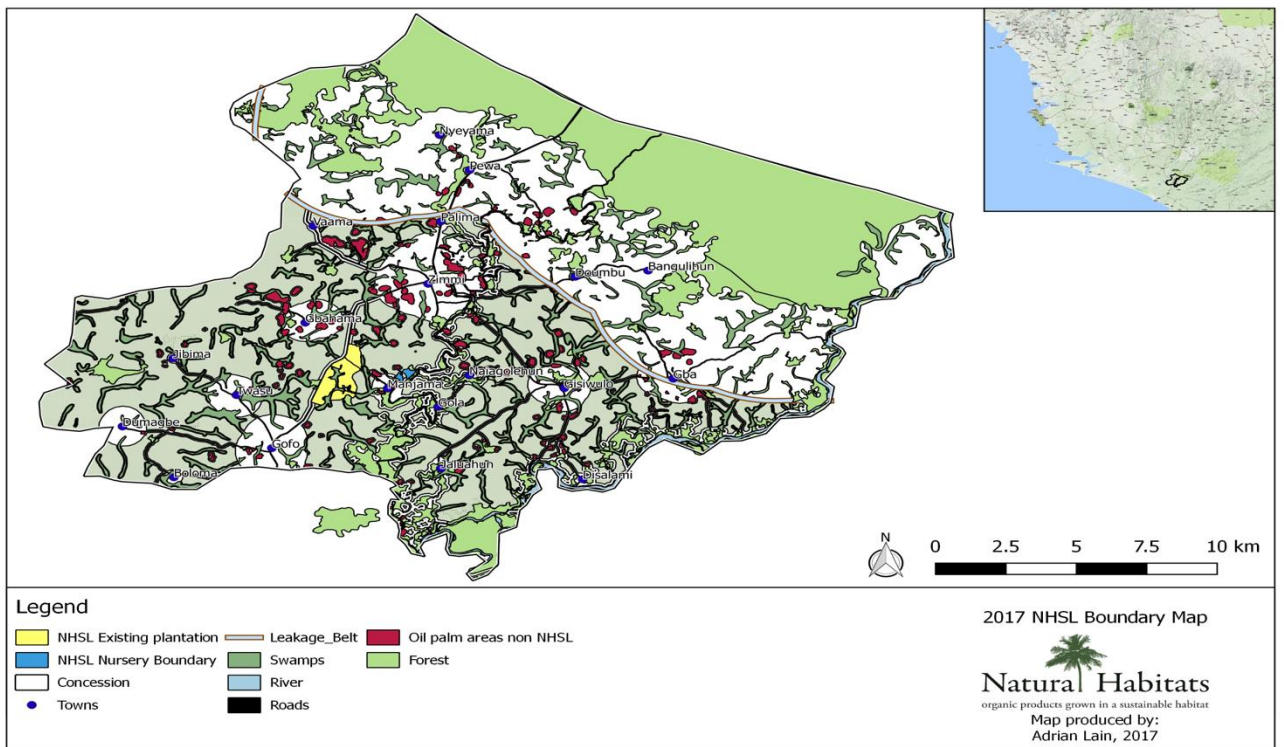
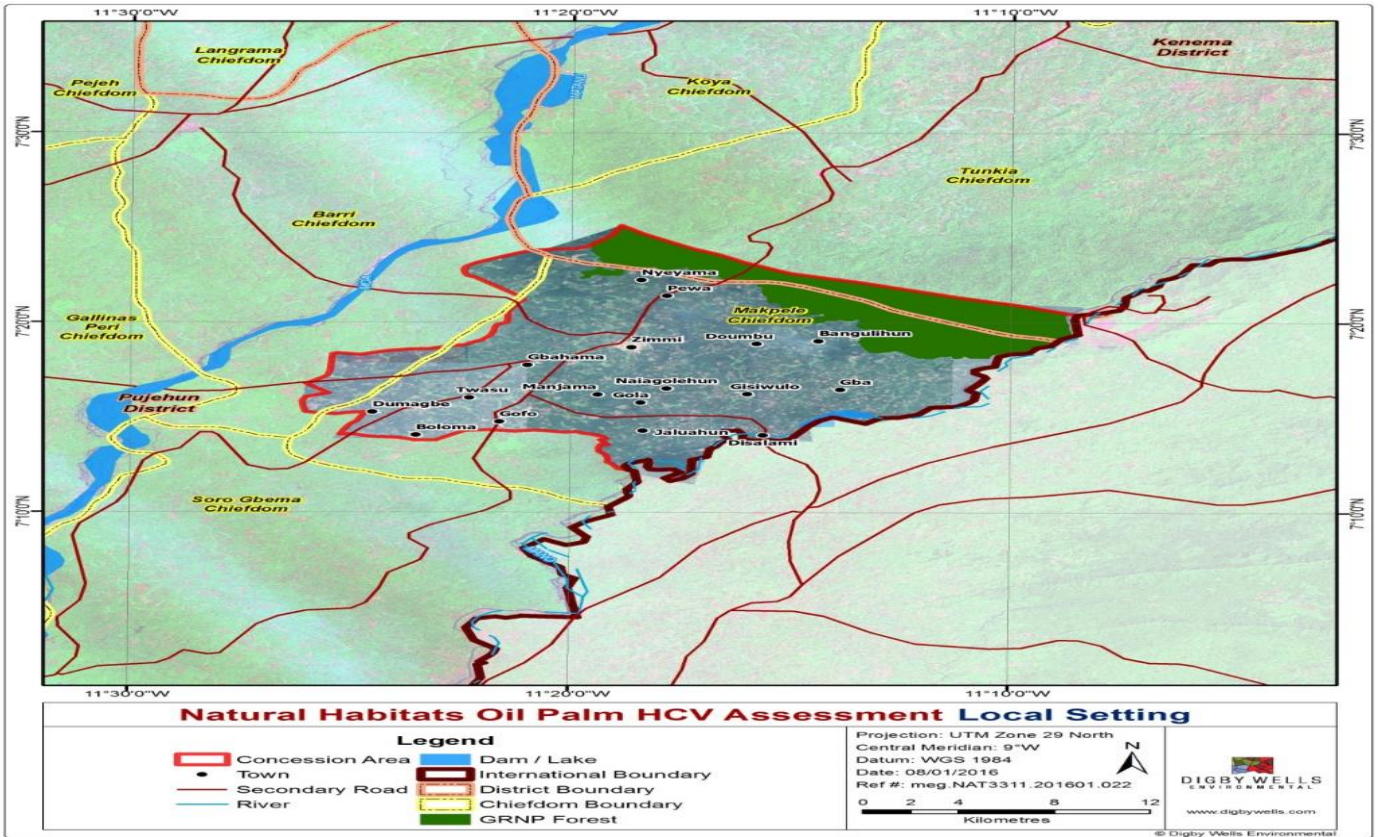
NPP NOTIFICATION STATEMENT	
Company and Contact Details	
Company name	Natural Habitats Sierra Leone Ltd.
Business address	Heemraadssingel 188, 3021 DM, Rotterdam, The Netherlands
Contact person	Jessenia Ângulo / Sam Mostyn
Telephone	+31652823919
E-mail	jessenia@natural-habitats.com / sam@natural-habitats.com
Web site	www.natural-habitats.com
RSPO Membership Details	
RSPO membership number	1-0115-11-000-00
Parent company as applicable	Natural Habitats Group

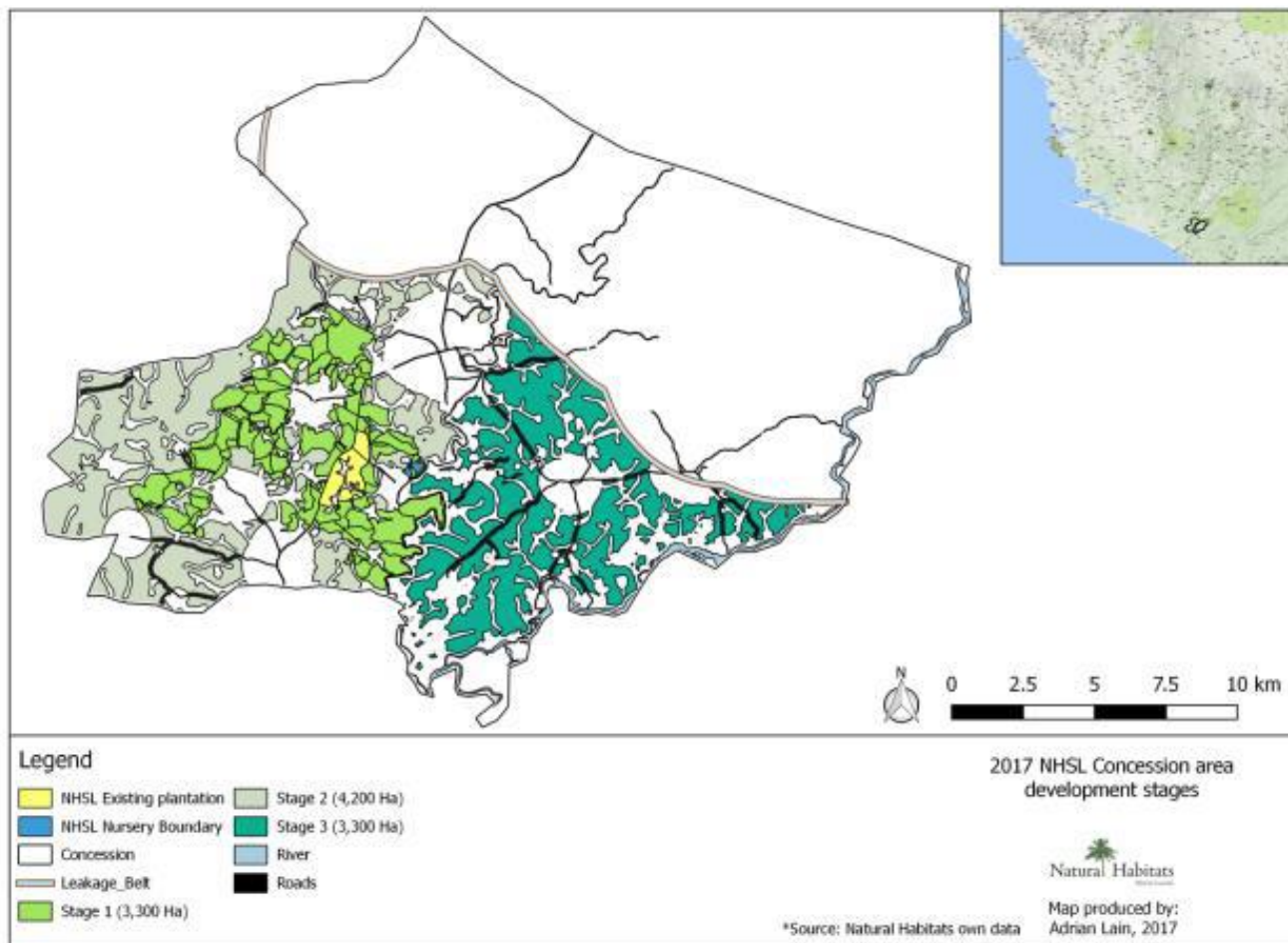
1. Date of Notification	October 23, 2017
2. Name of Grower	Natural Habitats Group
3. Name of Subsidiary (if any)	Natural Habitats Sierra Leone Ltd.
4. RSPO Membership No.	1-0115-11-000-00
5. Location of proposed new planting	
I - Grower Address	Azick drive No 5. Off Regent Road, Hill Station, Freetown, Sierra Leone
II - Business Permit	Certificate of business registration, Certificate of Incorporation, Environmental Impact Assessment licence approval
III - Type of Business	<p>Natural-Habitats.com is a company that is fully committed to the sustainable production of organic products. The triple P bottom line (people, planet, profit) is a pillar of our business model. Our operating companies are dedicated to these values and we believe that organic and sustainable production is the only true sustainable method to take care of the environment and deliver better products. Natural Habitats Group is certified organic according to the USDA-NOP and EC 834/2007 regulations. The operating companies, partners and people of Natural Habitats Group have a longstanding track record in producing organic agro-products in South America, transporting these products to Europe and USA, and supplying large industrials. Natural Habitats Group has offices in Ecuador and The Netherlands.</p> <p>Develop up to 10,000 ha of palm plantation. 7,500 ha nucleus estate, and 2,500 ha scheme smallholders, managed by Natural Habitats Sierra Leone Ltd.</p>
IV - Size (ha)	Total NPP area: 10,000ha Total area or development: 10,000ha
V – Contact Persons	Jessenia Ângulo / Sam Mostyn
VI – E-mail Address	jessenia@natural-habitats.com / sam@natural-habitats.com
VII – Geographical location	The proposed plantation known as Zimmi, is located approximately 351 km by road in the south-eastern direction from Freetown (the Capital City of Sierra Leone) and takes approximately 5-8 hours to drive to. It covers the entirety of the Makpele chiefdom, in Pujehun District,

	Southern Province, Sierra Leone.
VIII – Spatial Reference (GPS Coordinates) (e.g. N 1° 50' 5.0" E 103°27' 47.23")	GPS Position (Manjama Junction) UTM 29N 241987.98 805696.81 m WGS84 W 11°20' 12.294" n7°16' 58.592"

IX – Boundary Map







X – Areas and Time Plan for New Plantings

Approximately 7,500 ha nucleus estate (phase I: 3,300 ha and phase II: 4,200 ha) and 2,500 ha scheme smallholders to be developed from 2017-2020.

No.	Activities	2017		2018	2019	2020	2020
		N	D				
11	Field audit by CB						
12	Land Use Cover Change Assessment, High Carbon stock, and GHG assessment revision, and re-submission to RSPO						
13	NPP public consultation and Notification						
14	Land preparation for 80ha and nursery extension						
15	Construction of facilities, and roads maintenance.						

16	Extension of nursery and planting first stage (3300ha)																			
17	Individual land owners' agreements for second plantation stage (4200ha)																			
18	Mill establishment																			
19	Land preparation, planting of second stage (4200ha)																			
20	Individual land owners' agreements for third plantation stage (3300ha)																			
21	Land preparation, planting of third stage (3300ha)																			
22	Mill construction																			


6. Statement of Acceptance of Responsibility for NPP

Notes: The oil palm grower signs to confirm that the necessary assessments have been done and completed in accordance to the NPP.

At Natural Habitats Sierra Leone Ltd, the plantations management has been structured according to the roles and functions requirements to guarantee the correct implementation of good agronomic, environmental and social practices. Each of these divisions/unit is managed by a manager, and assisted by assistant managers.

The summary of SEIA (Social and Environmental Impact Assessment) and HCV (High Conservation Value) assessments for the 41,218.4ha, in Makpele chiefdom, in Pujehun District, Southern Province, Sierra Leone, proposed for development of oil palm plantations by Natural Habitats Sierra Leone Ltd has been accepted by the Management of Natural Habitats Sierra Leone Ltd. Acceptance of responsibility for the assessments and management are presented as part of the NPP SEIA, HCV summary and management document.

7. Company and Person Responsible

Name of Grower	Natura Habitats Sierra Leone LTD
Name of Person Responsible	Jessenia Angulo
Position	Group Sustainability Manager
Signature	
Date	October 23, 2017

8. Verification Statement by Certification Body (CB)

Notes: On completion of the information above, the oil palm grower will submit the details to the appointed CB who shall then verify the findings through documentation and field checks of proposed new plantings. The CB then provides a signed verification statement and sends it to the RSPO Secretariat.

In the NPP submission, the verification statement by the CB will confirm that the appropriate carbon stock assessments have been made in compliance to C7.8 and that these assessments have been submitted to the ERWG (applicable through 31st December 2016).

The NPP verification of Natural Habitats Sierra Leone Ltd was conducted through document and field verification. IBD lead auditor conducted preliminary document review during March 15, 2017. This was followed up with field verification visit from an IBD local auditor to the proposed new planting site at Natural Habitats Sierra Leone Ltd, Makpele chiefdom, in Pujehun

District, Southern Province, Sierra Leone on March 20-21 2017. The field verification includes meeting local people at the proposed new planting site and with the executives and staff assigned to involve in the NPP process were interviewed. The information on the proposed new planting has been communicated transparently to the surrounding community who might be impact by the proposed new planting and they are aware of the on-going FPIC process. At the time of field verification, clearing and preparation for planting had not commenced.

Natural Habitats Sierra Leone Ltd, a subsidiary under Natural Habitats Group, has been a member of the Roundtable for Sustainable Palm Oil (RSPO) since September 23, 2011; all

Final document verification was conducted on October 23, 2017 by IBD Lead auditor. The final document verification includes the verification of final ESIA, LUC and HCV Summary Report, Summary of planning and management, and RSPO GHG Assessment report for the proposed new planting. The auditor concludes that the social and environmental assessments, HCV assessment summary and RSPO GHG Assessment report are follows the requirements of NPP with details on the assessment result, comprehensive and carried out by qualified professionals with required credibility.

The HCV assessment was conducted by DIGBY WELLS ENVIRONMENTAL, Philp Patton Lead assessor registered under the HCV Resource Network Assessor Licensing (verified through HCVRN website; ALS15041PP)

The HCV assessment with ALS tier 1 was peer reviewed by HCVRN approved reviewer in April 25, 2016 as an additional means of quality assurance <https://www.hcvnetwork.org/als/public-summaries>

The ESIA assessment was conducted by Integrate Geo-Information and Environmental Management Services (INTEGEMS), The INTEGEMS ESIA Project Team has been put together to have a mix of international specialists that have extensive experience in managing ESIA's for large developments, including palm oil planting and milling projects, to IFC and other international standards. INTEGEMS is supported by extensive resources and expertise from a network of associates and partners and draws upon a wide range of technical specialists and strategic partners to contribute to and collaborate on the ESIA.

Scoping visits took place form the 12th to 15th June 2015, the scoping (stakeholders' consultation) workshop and advertising was held on Saturday 7th November 2015. The final report was delivered on the 4th of March 2016. In July 2016, the Environmental Protection Agency of Sierra Leone approved the license of the ESIA.

To fulfil Criterion 7.3, DIGBY WELLS ENVIRONMENTAL, Philp Patton Lead assessor registered under the HCV Resource Network Assessor Licensing (verified through HCVRN website; ALS15041PP) also conducted Land Use Change Analysis (LUCA) to ensure that there is no deforestation due to land development. LUCA assessment conducted in May 2017 through combination of satellite imagery analysis from Landsat.

Landsat 5 and 8 satellite images were processed using ERDAS Imagine® and ArcGIS® software and subject to on-screen analysis and differentiation for the land cover types and land uses. A multistage visual technique was used based on an on-

screen interpretation to directly digitize land cover units.

In the analyzed area was not identified primary forest and neither in the high values of conservation study were not identified places with high values of conservation therefore DO NOT EXIST COMPENSATION.

A High Carbon Stock (HCS) assessment has been conducted based on HCS approach to map potential high carbon stock areas. Montrose International in global consultancy company which works with a diverse client base throughout Africa and Asia in order to facilitate sustainable business whilst enhancing local, regional, and global environmental and social integrity. Through their specialist division, Montrose Environmental, was commissioned by Natural Habitats to conduct a High Carbon Stock (HCS) assessment and produce the subsequent GHG assessment using this HCS data. The HCS and GHG assessments will support Natural Habitats to reduce greenhouse gas emissions, where possible, to work with communities in protecting and conserving viable remnant natural forest patches in the concession, and to fulfil the no deforestation requirement as a part of the company's commitment to sustainable palm oil production.

The Project area is located south of the Gori hills in the granite greenstone terrain, which comprises a basement of granites overlain by supra-crustal greenstone belt. These rocks form the bulk of the granite greenstone terrain of central to eastern Sierra Leone. The relief of Pujehun District can be divided into three zones: intermediate foothills zone, interior plains and the coastal swamps and beach bar region. The Project area generally falls within the dissected plains of extremely low relief with isolated small hills and common terraces, which merge, gently into inland valley swamps. Most of the land in Makpele Chiefdom is flat and below 2° in slope.

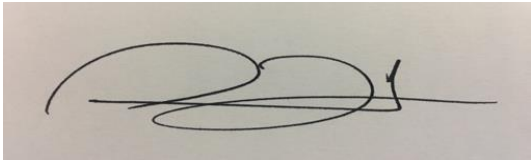
Wetlands and riparian buffer zones in the concession are identified in the map below. These areas are excluded from our development and will have additional buffer zones (wetlands 30m; and riparian forests 100m).

It is the opinion of IBD auditors that Natural Habitats Sierra Leone Ltd has complied with the RSPO New Planting Procedures.

Conclusion

Based on the above verification it is concluded that Natural Habitats Sierra Leone Ltd plan are comprehensive, of professional quality and has complied with the RSPO Principles, Criteria and Indicators.

9. Certification Body and Lead Auditor

Name of CB	IBD Certifications
Name of Lead Auditor	Pedro Roberto Cerrate Morales
Position	Lead Auditor
Signature	
Date	October 23, 2017

*The Summary of assessment reports (SEIA, HCV, soil and topography, LUC, GHG) and Summary of management plans shall be present with this NPP Notification statement.