



Transforming the market to make sustainable palm oil the norm

RSPO

Roundtable on Sustainable Palm Oil

**RSPO Outreach Program
Kuala Lumpur, 24th June 2014**

Step 1. Disclosure of areas cleared since November 2005 without prior HCV assessment

- Companies are required to disclose any non-compliant land clearance by **end of July 2014**.
- All RSPO members who own and/or manage land for oil palm production are asked to submit a liability disclosure report for each of their management units, **even if there is no potential non-compliant clearance for that unit**.

Step 2. Land Use (Cover) Change Analysis (LUC)

All companies in control of areas with non-compliant land clearance are then **required to submit a Land Use Change analysis – including reporting templates, maps, data, and information by end of September 2014.**

LUC for RSPO – What is it?

Land use/cover in November 2005 is used as a proxy for potential HCVs (1-3) that may have been lost due to clearance without prior HCV assessment.*

For all land cleared since 2005 without prior HCV assessment:

- When did the land clearing occur?
- What was the land cover/use in November 2005?
- Contextualizing information (who owned/managed the land at time of clearance, was the clearance commercial or non commercial, etc)

* Potential loss/compensation for social HCVs to be calculated separately. Areas cleared prohibited by the P&C (e.g. steep slopes, deep peat, riparian areas, etc) must also be identified.

Vegetation Coefficient Categories

- ❑ **Coefficient 1.0:** Structurally complex forest (including primary forest), regenerating, selectively logged forests with elements of high canopy.
- ❑ **Coefficient 0.7:** Structurally degraded but ecologically functional natural forest.
- ❑ **Coefficient 0.4:** Multi-species agroforestry.
- ❑ **Coefficient 0:** Monoculture tree and non-tree plantations; other permanently cultivated, developed or open degraded land

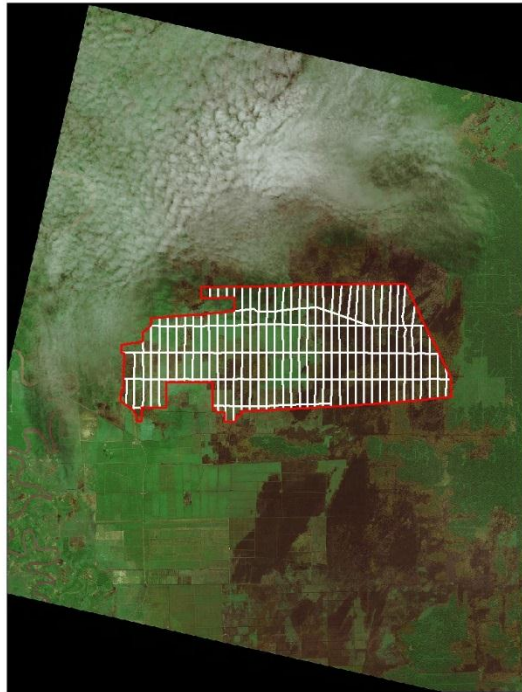
What do you need to submit to the RSPO for the LUC Analysis deadline?

1. Maps, data, and supporting information
2. Completed reporting template

Maps, data and supporting information

Maps, data, and supporting information (1):

Geo-referenced boundaries of management unit (e.g. HGU in Indonesia) (Esri shape file or compatible).

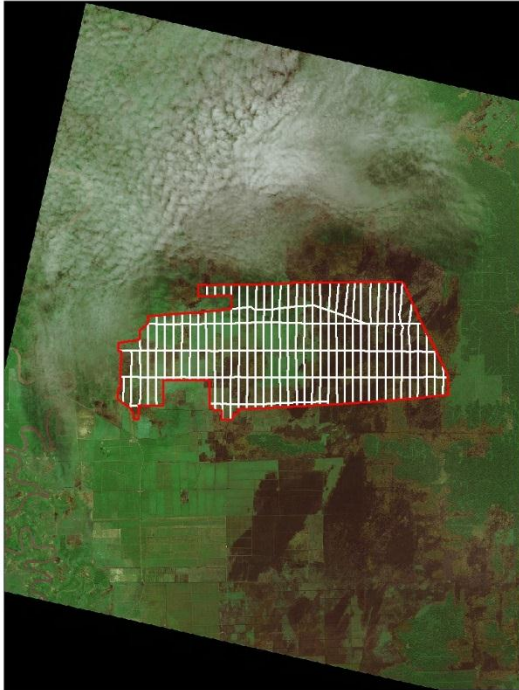


Example boundary map with SPOT5 22 August 2005 data

- Red Line = Management unit boundary
- White lines = Block Boundary

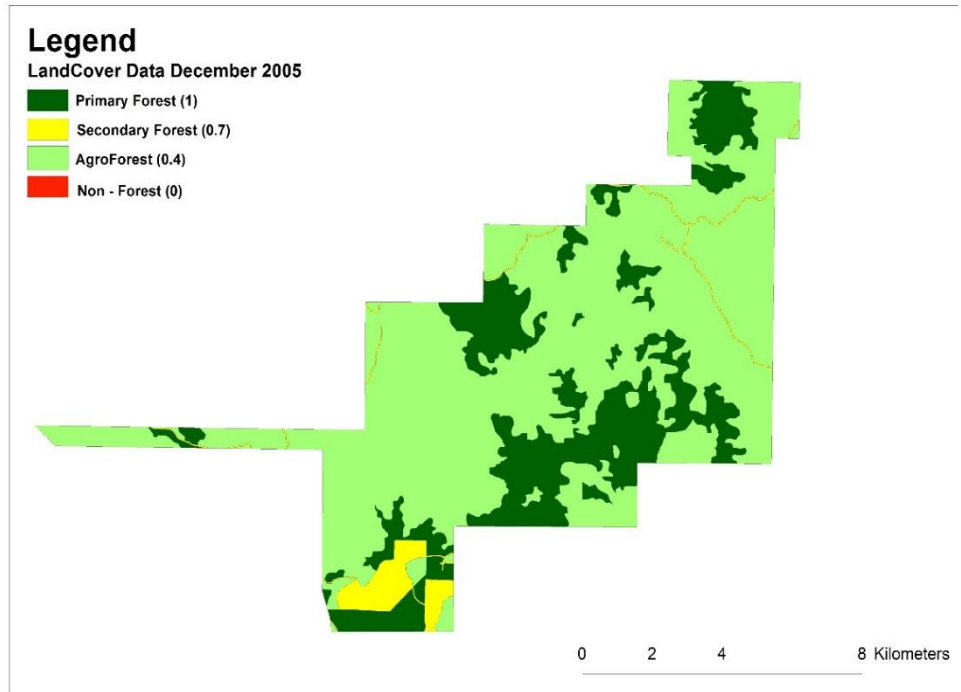
Maps, data and supporting information (2):

2. Baseline land cover data from as close to November 2005 as possible.



SPOT5 22 August 2005 (10m)

2a. Georeferenced satellite imagery for the entire permitted area with suitable resolution (at least 30 meter)



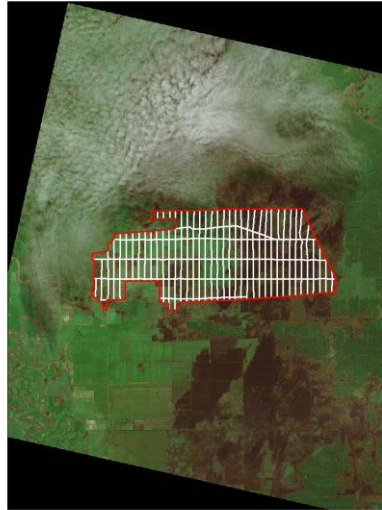
2b. Land cover map derived from satellite data for entire permit area for Nov. 2005 (or as close as possible). Map should distinguish land cover divided into the four vegetation coefficient categories (Esri shapefile or compatible).

Maps, data and supporting information(3):

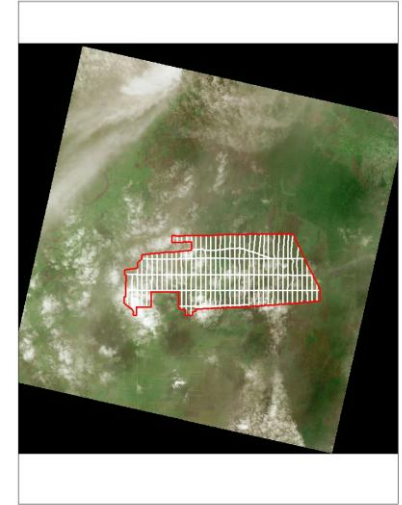
Subsequent land cover data, from 2006 – end of period of liability.

- Two options 1) annual land cover data ; or 2) land cover at end of each of the time frames described in the liability matrix (November 2007, 31 Dec 2009, present), or as close as possible to these dates.

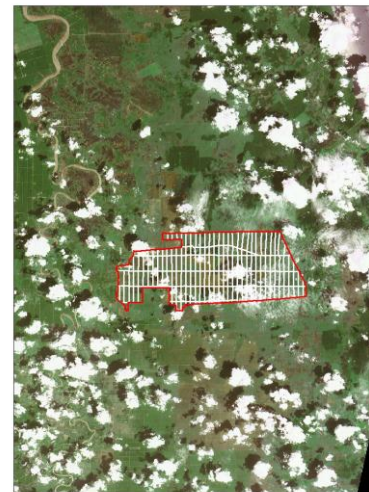
3a. Georeferenced satellite imagery for the entire permitted area for each year/time frame during the period of liability with suitable resolution and comparable to previous time frame (at least 30 meter)



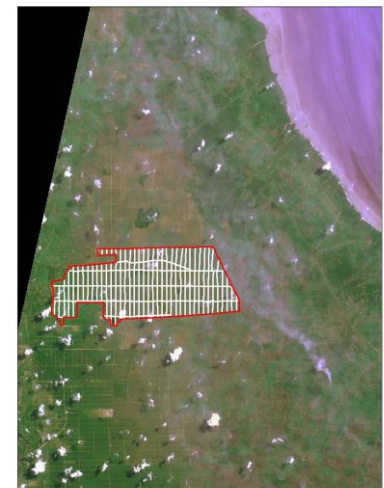
SPOT5 22 August 2005 (10m)



SPOT5 05 August 2006 (10m)



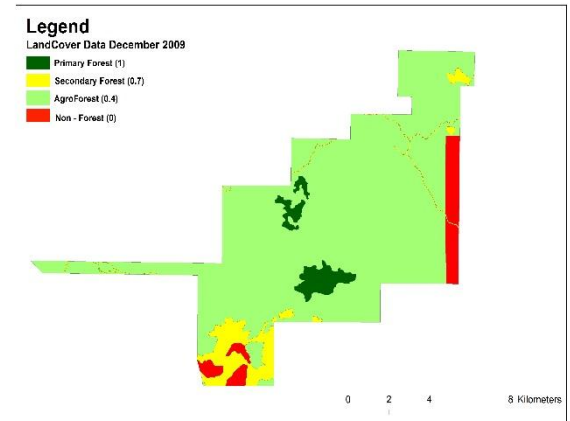
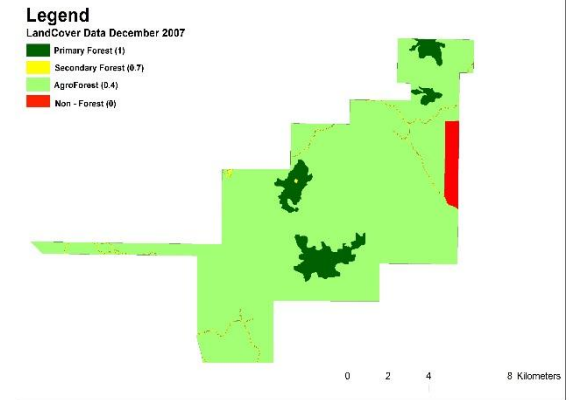
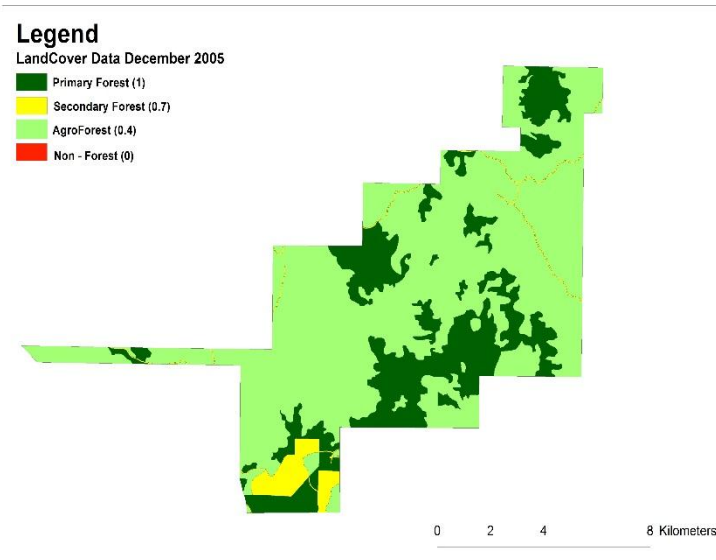
SPOT4 22 Nov 2007 (20m)



SPOT4 07 July 2009 (20m)

Maps, data, and supporting information(3):

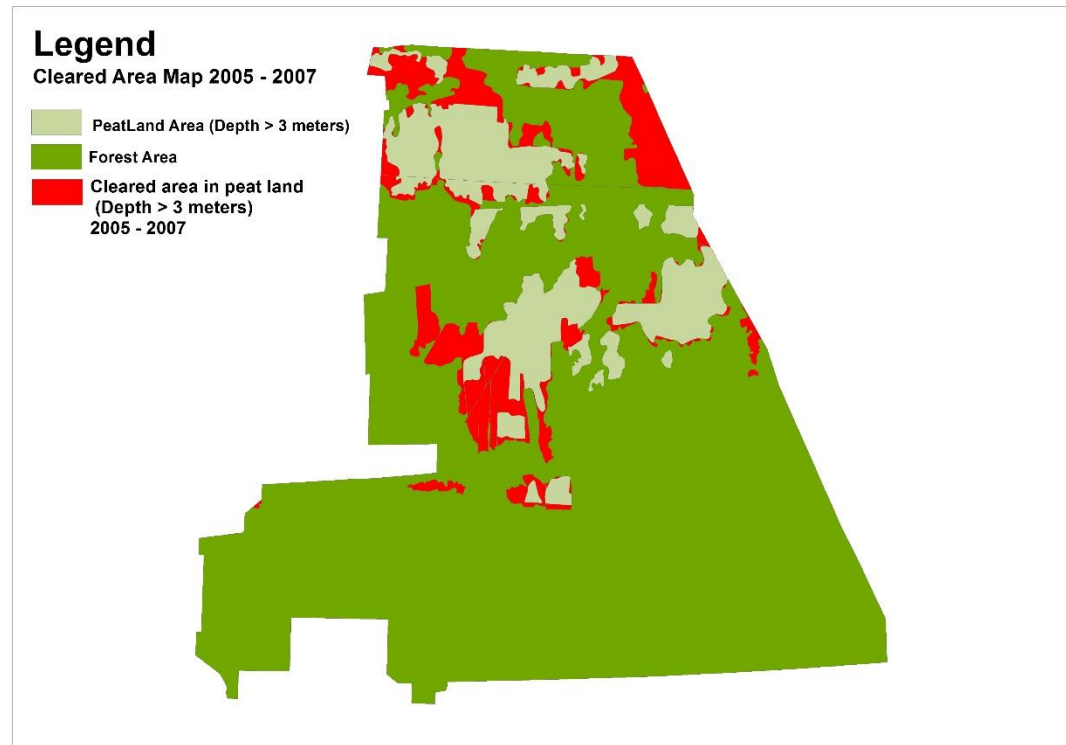
3b. Land cover map for each year/time frame divided into four vegetation coefficient categories, derived from satellite data (Esri shape file format or compatible).



Vegetation coefficient category	December 2005	December 2007	December 2009
Coefficient 1	9032 ha	4032 ha	2232 ha
Coefficient 0.7	1231 ha	121 ha	4321 ha
Coefficient 0.4	15623 ha	19521 ha	18321 ha
Coefficient 0	0 ha	2556 ha	4231 ha

Maps, data and supporting information (4):

4) Map indicating areas of clearance since Nov 2005 where planting of oil palm is prohibited by the P&Cs (e.g riparian zones, deep peat, steep slopes, etc) .



Maps, data and methodology (5-7):

5) Additional contextualizing information used in the LUCC analysis, such as field verification results, historic EIA/HCV assessments, community reports related to historic land use, etc

6) Company development plan per year (during period of non-compliance) for each management unit.

7) Descriptions of :

- i. **Data.** Satellite data (resolution, acquisition date, cloud cover, and processing level) and other data used in determining land cover;
- ii. **Methodology** of processing of the satellite imagery, including how it was classified into the four vegetation coefficient categories and any relevant site-specific details.

2. LUC Reporting Template



Find out more at www.rspo.org

