

# **RSPO New Planting Procedures**

## **Summary Report of Planning & Management PT. Borneo Persada Energy Jaya**

**Report prepared by:  
Anita Masduki & Yuda Budiutama**

TABLE OF CONTENTS

<b>1. Executive Summary</b> .....	3
<b>2. Reference Document</b> .....	4
2.1 List of Legal documents and regulatory permits related to the areas assessed .....	4
2.2 SEIA and HCV assessment reports .....	5
2.3 Location maps – both at landscape level and property level:.....	10
2.4 Area of new plantings and time-plan for new plantings .....	14
<b>3. SEIA and HCV Management and Planning Personnel</b> .....	15
3.1 Organizational information and contact Person .....	15
3.2 Personnel involved in Planning and Implementation .....	16
3.3 Stakeholder to be involved .....	17
<b>4a. Summary of Management and Mitigation Plans (SEIA)</b> .....	17
4a.1 Mitigation plans to minimise negative for socio-economic impacts .....	19
4a.2 Management plans to enhance socio-economic contribution .....	19
4a.3 Mitigation plans for negative for environmental effects	
4a.4 Management plans to promote positive environmental effects.....	19
<b>4b. Summary of Management and Mitigation Plans (HCV)</b> .....	19
4b.1 Plan for HCV monitoring and regular review of data .....	19
4b.2 Management plans to enhance or maintain conservation values of identified HCV areas	20
<b>5. Internal responsibility</b> .....	21
Formal signing off of management and mitigation plans .....	21

## RSPO NEW PLANTING PROCEDURES Summary Report of Planning and Management PT. Borneo Persada Energy Jaya

### 1. Executive Summary

The proposed new planting company, PT. Borneo Persada Energi Jaya (herein after refer to PT. BPEJ), is the legal entity of its holding company, First Resources Ltd. The holding company got RSPO membership number 1-0047-08-000-00 dated on March 11, 2008. PT. BPEJ was assessed for compliance against the RSPO Procedures for New Oil Palm Planting (RSPO NPP) using the Guidance Document approved in September 2009 by the RSPO Executive Board.

PT. BPEJ was established by Act No. 09 dated on 8 October 2007 issued by Notary Yonsah Minanda, SH and legalized by Ministry of Law and Human Right No.AHU-09082.AH.01.01.TH.2008 dated on 25 February 2008.

The proposed project has obtained *Ijin Lokasi* (Location Permit) through the Decree of Regent Kutai Barat No. 525.26/K.565a/2010 dated on 14 June 2010 for the total area  $\pm$  6.700 ha. The project located in villages of Damai Seberang, Sempant, Muara Tokong, Lumpat Dahug, Bomboy, and Muara Nyahing Village, Damai Sub District, Kutai Barat District, East Kalimantan Province, Indonesia. Based on the technical consideration from Forestry Agency of East Kalimantan on the status and the function of forest area, the total area has been revised into 5,944.72 ha. The current *Ijin Usaha Perkebunan* (Plantation Permit) was under the Decree of Kutai Barat District No. 525.26/K.941b/2010 dated on 22 November 2010.

The social and environmental impact assessment (SEIA) was integrated study along with the *Analisis Mengenai Dampak Lingkungan/AMDAL* (Environmental Impact Assessment/EIA). High Conservation Value (HCV) report were available. These documents were prepared by YASBI consultant, an RSPO approved consultant in March 2012

Mandatory document on environmental issues was *Analisis Mengenai Dampak Lingkungan/AMDAL* (Environmental Impact Assessment/EIA) document consist of *Kerangka Acuan* (Scope of Reference for EIA), *Analisis Dampak Lingkungan/ ANDAL* (Environmental Impact Assessment/EIA), and *Rencana Kelola Lingkungan dan Pemantauan Lingkungan/RKL-RPL* (Environmental Management and Monitoring Plan). All these documents approved and issued under the Decree of Head of Environmental Agency of Kutai Barat District No. 660.5/013/KA.ANDAL/BLH-KBR/IX/2010 dated on 29 September 2010 and No. 660.5/014/AMDAL/BLH-KBR/X/2010 dated on 18 October 2010. The documents were prepared by PT. Integral Multi Talenta, a government approved EIA consultant.

The TUV NORD assessor team has checked and verified that all required legal documents as mentioned above were available and legally confirmed. The assessor team conclude that PT. BPEJ was ready to implement the recommended social and environmental management plan as specified in all documents above to comply with RSPO New Planting Procedure announcement.

## 2. Reference Documents

### 2.1 SEIA and HCV Assessment Report

The scope of the Social and Environmental Impact Assessment (SEIA) and the High Conservation Value (HCV) assessment of PT. BPEJ cover the local social and environmental aspect within the area under *Ijin Lokasi* (Location Permit), including villages and other surrounding areas.

As part of SEIA, there was the detailed environmental impact assessment which performed in *Analisis Dampak Lingkungan/ ANDAL* (Environmental Impact Assessment/EIA), and *Rencana Kelola Lingkungan dan Pemantauan Lingkungan/RKL-RPL* (Environmental Management and Monitoring Plan) document. It was included assessment of positive and negative on social and environmental impact. The scope of the study included the activities during land development, infrastructure, road access mill operations and transportation. It also assessed the suitability of soils, topography and drainage, and analysis of the land cover vegetation, and its impacts on natural ecosystems and water resources.

Through the SEIA and HCV assessment, it was found that there was no primary forest, no peat area, and no disputes with local people as the land resolution has been confirmed during free prior and informed consent.

#### a. SEIA assessment

As reported in SEIA document, the existence of PT. BPEJ will have significant social and environmental impacts. It was reported that several issues arise, including communication, land acquisition, labor, economic, education, health, accessibility, and environmental issues. These issues are listed below.

Issues	Description
Communication Issues	<ul style="list-style-type: none"> <li>• Socialization was still less, and dissemination of material has not met the public's curiosity</li> <li>• The local communities and the company have different perception toward land certificate.</li> <li>• There was a lack of understanding about the palm oil plantation and <i>plasma-inti</i> partnerships.</li> <li>• The emerging of negative issues and negative perceptions about palm oil plantations.</li> <li>• Communication between company and stakeholders was not optimal yet.</li> </ul>
Land Acquisition Issues	<ul style="list-style-type: none"> <li>• Part of the local communities were not feel comfortable about the <i>tali asih</i> (compensation given by the company as part of CSR program).</li> <li>• Percentage of the plasma is considered beneficial for some people.</li> <li>• There was no agreement the village boundary (Nyahing and Mantar, and Damai Seberang the Muara Bomboy)</li> <li>• Value of <i>tali asih</i> compensation was too low for the most communities</li> <li>• The communities would rather sell the land in an economic way rather than receive the <i>tali asih</i> compensation.</li> </ul>
Labor	<ul style="list-style-type: none"> <li>• The community asked to recruit local employees.</li> <li>• The workers asked to increase the salary regarding to their economic needs.</li> </ul>
Economic Issues	<ul style="list-style-type: none"> <li>• Many of the creative industries was no more active , such as rattan industry, farming, and fishing, and the potential income from rattan has been decreased</li> <li>• Small Industries could not gave significant economic contribution</li> <li>• High dependency of food from outside region</li> <li>• The economic potential has not been used optimally (livestock, fisheries, plantation)</li> </ul>

Education issues	<ul style="list-style-type: none"> <li>• Level of education was still low, access to education was still lack.</li> <li>• Lack of education facilities</li> <li>• Lack of the number of teachers</li> <li>• Limited access to get higher education</li> </ul>
Health Issues	<ul style="list-style-type: none"> <li>• Awareness of a healthy lifestyle was still low, health program and facilities also still not optimally running.</li> <li>• Healthy workers were still lack</li> <li>• There was potential for air pollution (dust), it would be cause the spread of diseases such as ARI/ISPA</li> <li>• Potential reduction in water quality of rivers that would be cause the spread of skin disease.</li> </ul>
Accessibility issues	<ul style="list-style-type: none"> <li>• Lack of public transportation since the road and bridge infrastructure was inadequate (Damai Seberang dan Muara Nyahing Village)</li> </ul>
Environmental Issues	<ul style="list-style-type: none"> <li>• Community fear of loss of quality of river water</li> <li>• Potential decreased in water quality</li> <li>• Potential decreased in water sources quality (Muara Begai)</li> <li>• The potential for air pollution (dust)</li> <li>• Potential climate changes could be happened in the future (warmer air)</li> </ul>

### b. HCV assessment

Refer to HCV report, there were five types of HCVs identified within the permitted area of PT BPEJ, with the total HCV area is 390.42 ha. Among this area, 389.82 ha of HCV 1; 286.23 ha of HCV 2; 389.82 ha of HCV 4; 389.82 ha of HCV 5 and 0.6 ha of HCV 6 and these area might be overlap among each other. The detailed of each HCV was mentioned below.

Elements for HCV 1 was consist of:

- Riparian: Nyuatan and Kedang Pahu River,
  - Lake: Kelian, Olo, Wangkay, Mongay, Krokos, Muntay, Engkooq, Melinau, and Nyahing Lake
  - Water spring: Kelian, Melake and Lumpat Dahuq water spring.
- All of them were overlap with the HCV 2, 4 and 5..
- Protected vegetation: *Durian hutan/ pekawai (Durio kutejensis* Becc), *Meranti merah/ jawar (Shorea ovalis)*, *Meranti putih/ lempung (Shorea lamellate)*
  - Protected wildlife animals: fourteen identified as: Bekantan (*Nasalis larvatus*), Beruk (*Macaca nemestrina*) Elang hitam (*Ichthyophaga sp*), Enggang klihingan (*Anorrhinus galeritus*) Kancil/pelanduk (*Tragulus sp.*) Kijang (*Muntiacus muntjak*) Kucing hutan (*Felis bengalensis*) Landak (*Hystrix brachyurum*), Lutung dahi putih (*Presbytis frontata*), Owa Owa (*Hylobates muelleri*), Rangkong badak (*Buceros*), Rusa (*Cervus unicolor*), Tiong emas (*Gracula religiosa*) and Trenggiling (*Manis javanica*).

Elements for HCV 6 are public cemeteries in Kelian, Muara Bomboy, and Lumpat Dahuq.

Based on information from SEIA and HCV assessment along with its stakeholder meeting, PT. BPEJ prepared a management plan deal with social and environmental aspects and impacts. And based on review and verification on all of above documents, TUV NORD assessor team confirmed that the assessment and management plan are comprehensive and compliant to the RSPO New Planting Procedure.

## 2.2 List of legal documents and regulatory permits

PT BPEJ has prepared all required legal documents and regulatory permits related to the areas assessed as listed below.

- List of legal documents
  - SEIA Assessment report for PT. BPEJ
  - HCV Assessment report for PT. BPEJ

- Analisis Mengenai Dampak Lingkungan/AMDAL (Environmental Impact Assessment/EIA) document consist of *Kerangka Acuan ANDAL* (Scope of Reference for EIA), *Analisis Dampak Lingkungan/ ANDAL* (Environmental Impact Assessment/EIA), and *Rencana Kelola Lingkungan dan Pemantauan Lingkungan/RKL-RPL* (Environmental Management and Monitoring Plan)
- Land release and compensation records.
- Minutes of Meetings with Communities on Public awareness of the Project (FPIC- Free Prior and Informed Consent)
- The oil palm development plan of PT. BPEJ .

b. List of regulatory permit

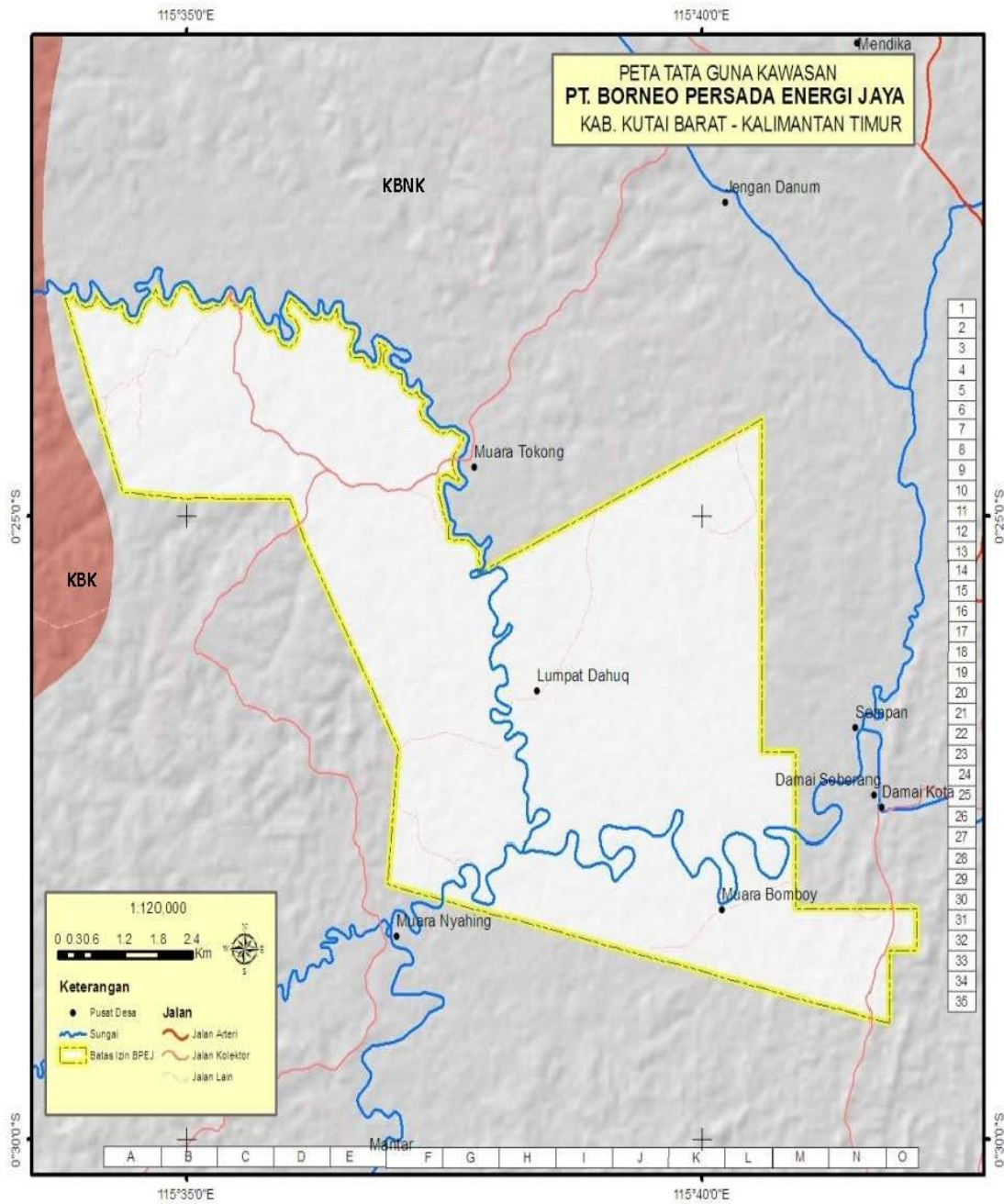
No	Type of Licenses	Issued by	Number and Date
1	Act of Establishment	Notary Jhonni Marihotua Sianturi, SH	No.41 dated on 22 June 2006
2	Legalization Act of Establishment	Ministry of Law and Human Right of Republic	No. AHU 09082.AH.01.01.TH.2008 dated on 25 February 2008.
3	Location Permit	Regent of Kutai Barat	No.525.26/K.565a/2010 dated on 14 June 2010.
4	Plantation Permit	Regent of Kutai Barat	No. 525.26/K.941b/2010 dated on 22 November 2010
5	<i>Kerangka Acuan</i> (Scope of Reference for EIA) ANDAL	Head of Environmental Agency of Kutai Barat District	No. 660.5/013/KA.ANDAL/BLH-KBR/IX/2010 dated on 29 September 2010
6.	Technical Consideration of Status of Forest and Waters Area	Forestry Agency East Kalimantan	No. 522.22/5523/DK-II/2010 dated on 19 Oktober 2010
7.	<i>Analisis Dampak Lingkungan/ ANDAL</i> (Environmental Impact Assessment/EIA), and <i>Rencana Kelola Lingkungan dan Pemantauan Lingkungan/RKL-RPL</i> (Environmental Management and Monitoring Plan)	Head of Environmental Agency of Kutai Barat Regency	No. 660.5/014/AMDAL/BLH-KBR/X/2010 dated on 18 October 2010.

2.3 Location map – both at landscape level and property level

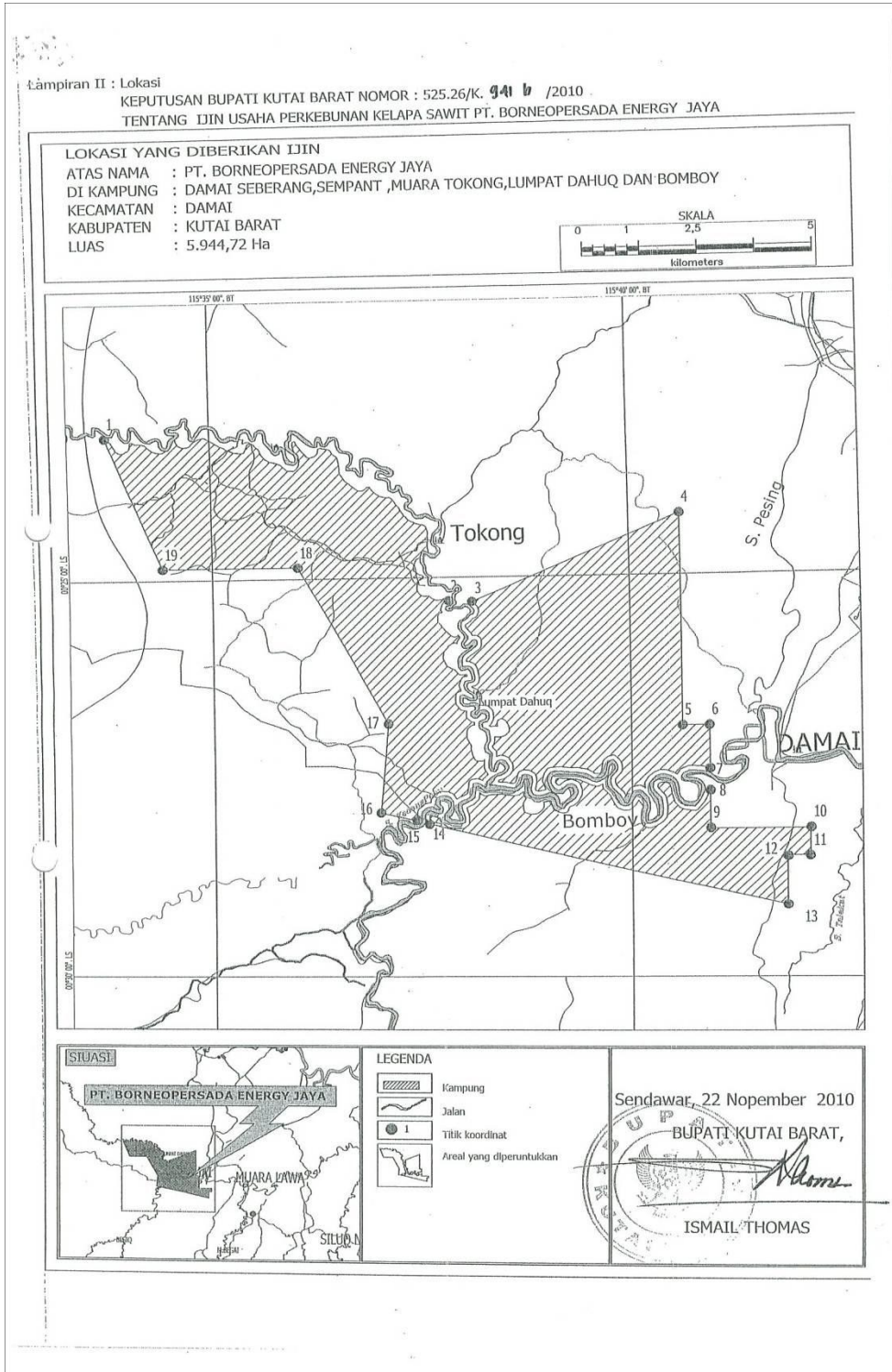
a. Map of situation of PT. BPEJ, Kutai Barat District, East Kalimantan



b. Map of Land Use Area of PT. BPEJ in Kutai Barat Regency

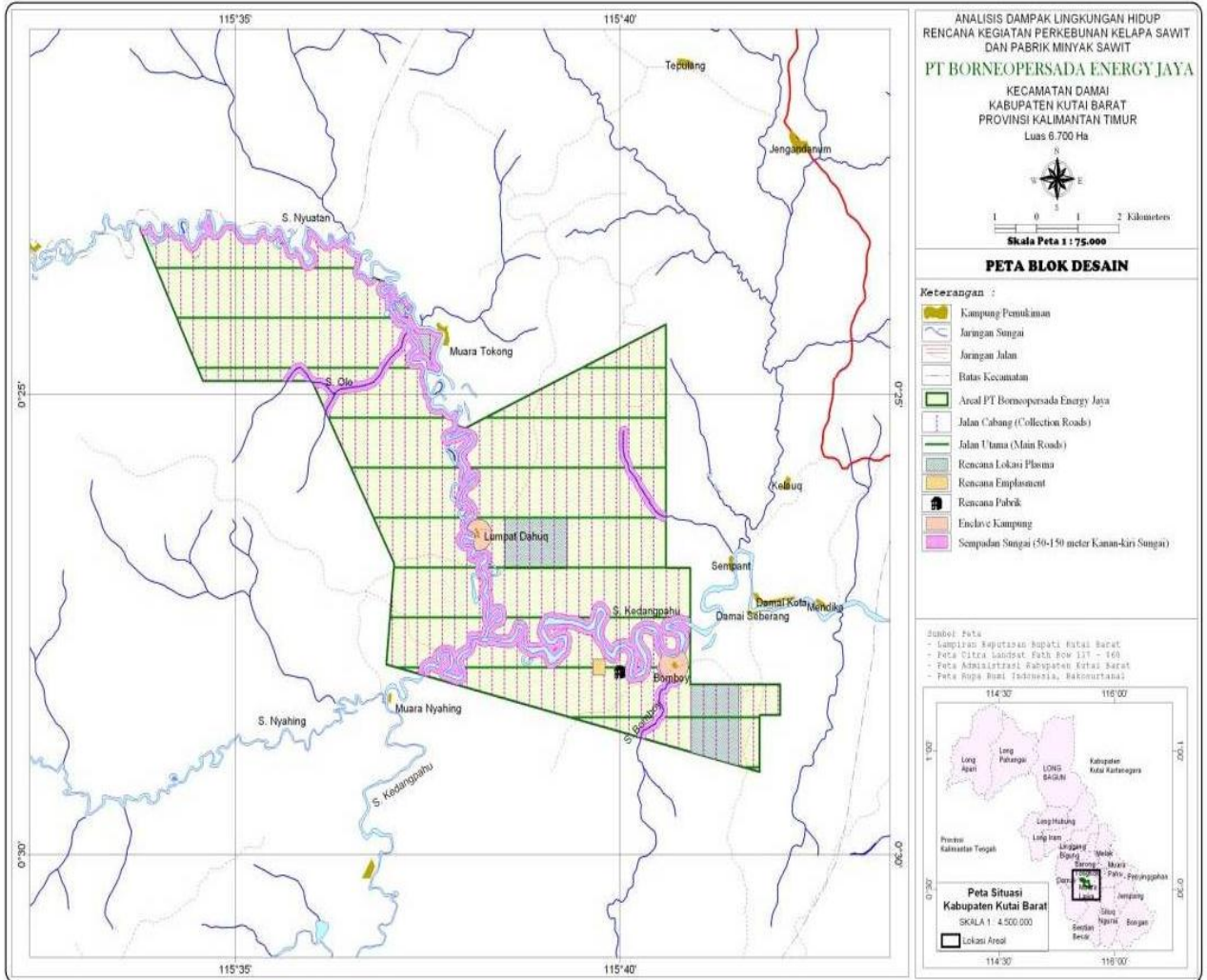


- c. Map of PT. BPEJ based on Plantation Permit No. 525.26/K.941b/2010 dated on 22 November 2010





d. Maps Block Design of PT. BPEJ



**2.4 Area of New Plantings and Time-plan for New Plantings**

The proposed new planting area of PT BPEJ was accordance with current *Ijin Usaha Perkebunan* (Plantation Permit) No. 525.26/K.941b/2010 dated on 22 November 2010 which cover 5,944.72 ha. Among this area, estimated new planting area approximately 5,364.30 ha, consisted of 4,291.44 ha for *kebun inti* (nucleus estate) and 1,072.86 ha (around 20%) for *kebun plasma* (smallholders scheme) which will be dedicated for farmers or growers under estate management. The aim of smallholder scheme is to contribute income and maintain harmonious relationship with the local community.

The partnership program was developed in document *Naskah Kerjasama Pembangunan Perkebunan Kelapa Sawit Program Kemitraan* (Memorandum of Understanding on Palm Oil Development Partnership Program) dated on 29 October 2010. The proposed time-plan for new planting will commence in August 2012 and prior to the new planting date, PT BPEJ shall put notification in RSPO website to allow related parties have their comments to the plan. PT BPEJ has the time-plan for new planting area in detailed as listed below.

No	Activity	2012 (Ha)	2013 (Ha)	2014 (Ha)	2015 (Ha)	TOTAL (Ha)
1	Land Clearing					
	<i>Kebun Inti</i> (Nucleus Estates)	400.00	1,200.00	1,600.00	1,243.44	4,291.44
	<i>Kebun Plasma</i> (Smallholders)	100.00	300.00	400.00	310.86	1,072.86
	Total Land Clearing	500.00	1,500.00	2,000.00	1,554.30	5,364.30
2	Nursery	100,000.00	300,000.00	400,000.00	310,860.00	1,072,860.00
3	Planting					
	<i>Kebun Inti</i> (Nucleus Estates)	400.00	1,200.00	1,600.00	1,243.44	4,291.44
	<i>Kebun Plasma</i> (Smallholders)	100.00	300.00	400.00	310.86	1,072.86
	<b>Total Planting</b>	<b>500.00</b>	<b>1,500.00</b>	<b>2,000.00</b>	<b>1,554.30</b>	<b>5,364.30</b>

Due to land release process, PT. BPEJ has established procedure *Prosedur Pembayaran Tali Asih Pembebasan Lahan* (Land Acquisition and Calculation) dated on 18 January 2010. The total compensated land area as per February 2012 was 428.93 ha, located in Lumpat Dahug and in Muara Tokong Village, while in other villages are still in progress of land verification and measurement by independent team of community groups.

The TUV NORD assessor team has checked and verified related documents on land acquisition and its calculation and concluded that PT. BPEJ has performed the land acquisition resolution through free prior and informed consent as reported in SEIA report and Minutes of Meetings with Communities on Public awareness of the Project.

### 3. SEIA and HCV Management & Planning Personnel

#### 3.1. Organisational information and contact persons.

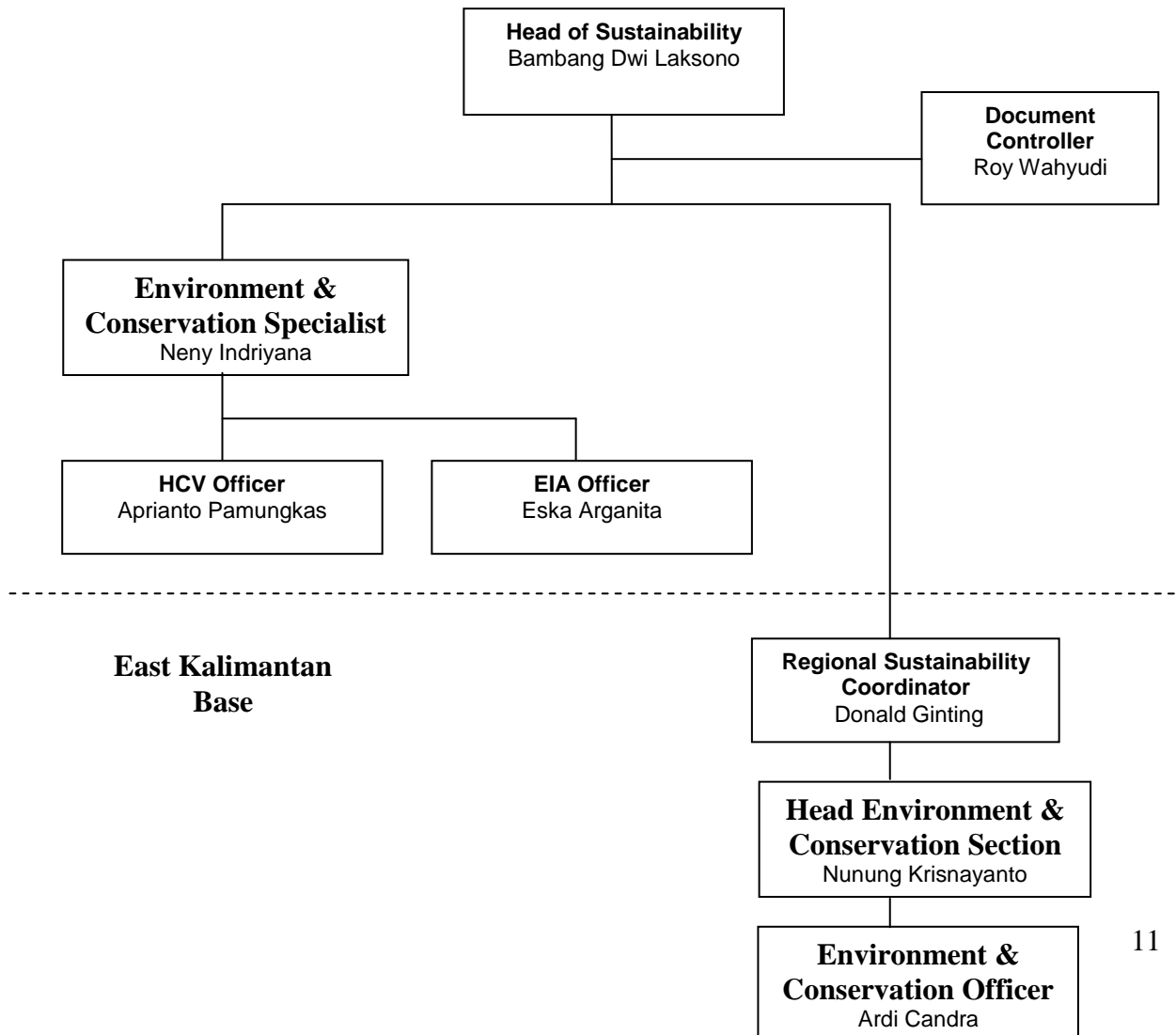
Company Name	PT. Borneo Persada Energy Jaya, a subsidiary of First Resources Ltd.
Capital Status	Domestic Investment Company (PMDN)
Act of Establishment	Act No. 09 dated on 8 Oktober 2007 issued by Notary Yonsah Minanda, SH and legalized by Ministry of Law and Human Right No. AHU-09082.AH.01.01.TH.2008 dated on 25 February 2008.
Tax Identification	02.663.365.1-031.000 01.061.916.1.058.000
Company Address	Corporate Office: APL Tower –Central Park, 28th Floor Podomoro City, Jl. Letjen. S.Parman Kav.28, Grogol-Petamburan, Jakarta Barat, Indonesia Regional Office: Jln.Jend.Sudirman Blok A 12 RT.007 Kel.Kelandangan Ilir-Balikpapan 73113
Type of Business	Oil Palm Plantation and Processing
Status of business land	Location Permit: Decree of Regent Kutai Barat No. No.525.26/K.565a/2010 dated on 14 June 2010, total area 6.700 ha Plantation Permit : Decree of Regent Kutai Barat No. 525.26/K.941b/2010 dated on 22 November 2010, total area 5,944.72 Ha

Contact Person	Director – Azaria Yoga Prasetyanto Corporate Sustainability Head – Bambang Dwi Laksono Email Address: <a href="mailto:bambang.dwilaksono@first-resources.com">bambang.dwilaksono@first-resources.com</a>
Geographical Location	Latitude :00°23'12" – 00°29'06" South Longitude: 115°33'46" – 115°42'05" East
Region Boundaries	
North side	PT. Borneo Persada Prima Jaya (BPPJ)
South side	PT. Citra Agro Kencana (CAK)
West side	Kawasan Budidaya Kehutanan ( <i>Cultivation of forest area</i> )
East side	Kawasan Budidaya Non Kehutanan ( <i>Cultivation of non Forest area</i> )

**3.2 Personnel involved in planning and implementation.**

PT BPEJ has set up the organization structure and its personnel that involve in planning, implementation, and monitoring of the SEIA and HCV. This is the responsibility of the Head of Sustainability, in Jakarta Base which is supported by Contoiller SPO Document and Specialist Environment and Conservation, Officer HCV and Officer EIA. In East Kalimantan Base by Coordinator Regional Sustainability, supported by Head Environment & Conservation Section and Officer Environment & Conservation. The organization chart is shown below.

**Jakarta Base**



### **3.3 Stakeholders to be involved.**

Stakeholders to be involved in SEIA and HCV management plan consist of local communities surrounding PT BPEJ and relevant government institutions, detailed as below.

- a. Local communities and head of village located inside and around the permitted area of PT. BPEJ:
  - Damai Sebrang Villager
  - Sempant Villager
  - Muara Tokong Villager
  - Lumpat Dahuq Villager,
  - Bomboy Villager
  - Muara Nyahing Villager
- b. Local government institutions, such as Environmental Agency, Plantation Bureau, Labor Bureau,

### **4a. Summary of Management and Mitigation Plans (SEIA)**

PT BPEJ has prepared the SEIA report Assessment for PT. BPEJ was conducted by a government accredited EIA consultant PT. Integral Multi Talenta, which also prepare management and mitigation plans. The AMDAL document was approved on 18 October 2010 by Decree of the Regent Kutai Barat No. 660.5/014/AMDAL/BLH-KBR/X/2010

The Top management of PT. BPEJ are committed to accomplish the environmental management plans and has issued decrees and policy such as:

- SK CEO tentang penetapan kawasan HCV PT BPEJ (Decree of HCV area establishment PT. BPEJ) No.011/SUSTAINABILITY\_FR/P/V/2012 dated 1 May 2012
- SK CEO tentang pembukaan lahan yang berwawasan lingkungan dan konservasi (Decree of land clearing in environmental and conservation conduct) No : 009/SUSTAINABILITY\_FR/P/II/2012 dated 1 February 2012
- SK Kebijakan Lingkungan dan K3 (Decree of Environmental, Health and Safety Policy) 001/SUSTAINABILITY\_FR/P/IX/2011 dated 20 September 2012
- SOP *Identification, Management, and Monitoring of High Conservation Value* No. 01/FR.EAC/IMM dated 13 April 2012

#### **4a.1 Mitigation plans to minimise negative for socio-economic impacts.**

PT. BPEJ has develop mitigation plans to minimize negative for socio-economic impacts. The potential negative impacts include: the behavior of an increasingly consumerist society, the increasing land conflicts between people due to the increasing value of land, changing patterns of community livelihoods, and social disparities between indigenous communities and the migrants. The mitigation plans are :

- Survey with the related parties in on definitive delineation of land ownership
- Development of alternative income generating activities to safeguard their economic standing after post-development of the project.

#### **4a.2 Management plans to enhance socio-economic contributions.**

PT. BPEJ has develop management plans to enhance socio-economic contributions. The steps taken in the SEIA development and preparation of management & monitoring plans are:

- Improvement on the level of community education
- Increase local communities awareness of good agricultural practice, cattle, and fishing.
- Employment and the creation of new jobs
- Create a community development program through a communication forum
- Built communication and net with stakeholder regarding PT. BPEJ

#### **4a.3 Mitigation plans for negative environmental effects**

The environmental issues in the study area is potentially the reduction of river water quality, also decreasing of air quality and increasing noise level if the mill starts to operate. PT. BPEJ has developed mitigation plans for potentially negative environmental effects: conduct water quality testing, air quality tests and noise testing regularly as required by government regulation.

#### **4a.4 Management plans to promote positive environmental effects**

The presence of PT. BPEJ is expected by local community to have positive environmental effects to provide clean water and protect the water resources that have been delineated in HCV area. Moreover, is to improve quality of community health and develop of environment conservation programs.

### **4b. Summary of Management and Mitigation Plans (HCV)**

#### **4b.1 Plan for HCV monitoring and regular review of data.**

The HCV monitoring and review plan is aimed to evaluate whether the activities implementation are as expected and whether the outputs of the process are as per targets; and whether the resources investments (human, fund, time) are as per plan.

#### **4b.2 Management and mitigation plans for threats to HCV areas**

##### **(i) Management and mitigation plans for HCV 1 and HCV 2**

- Issue CEO decree for HCV establishment area and SOP to manage and to monitor HCV area.
- Conduct awareness campaign to all plantation and surrounding community, about the existence of the entire HCV
- Create a definitive map of HCV
- Conduct delineation of the entire area of HCV as identified and put up signboard identifying HCV area, together with photos of protected species and with clear warning of consequences of illegal hunting
- Conduct delineation of the entire area of HCV as referred and put up riparian signboard of buffer zone surrounding the area of the identified HCV (50 m for river with length < 30 m, 100 m for river with length > 30 m, and radius 200 m around springwater) with clear warning of consequences of illegal hunting, illegal fishing (poisoning, using electricity and explosive), prohibition to use agro-chemicals along buffer zone
- Do not build roads, canals and other infrastructures in HCV area
- Do not build plantation in HCV area
- Conduct regular monitoring to the presence of identified protected species
- Conduct enrichment planting/rehabilitation for HCV area which have low vegetation coverage.

##### **(ii) Management and Mitigation plan for HCV 4**

- Define the water catchment area as water resources for local community.
- Conduct delineation of the entire area of HCV as referred and put up riparian signboard of buffer zone surrounding the area of the identified HCV (50 m for river with length < 30 m, 100 m for river with length > 30 m, and radius 200 m around springwater) with clear warning of consequences of illegal hunting, illegal fishing (poisoning, using electricity and explosive), prohibition to use agro-chemicals along buffer zone.
- Implement policies and/or SOP to regulate the use of agro-chemical and waste management and conduct publication and awareness campaign on the SOP.
- Do not build roads, canals and other infrastructures in HCV area.
- Testing and analyze the water quality regularly.
- Implement Zero burning policy during land clearing activity
- Identify areas that are prone to fires and preserve fire barrier area

- Establish procedure of emergency responses and preparedness to land burning and provide fire extinguishers and facilities.
- (iii) Management and Mitigation plan for HCV 5
- Communicate with local community to utilize forest product in sustainable manner.
  - Put up signboard identifying the types of HCV area, with clear warning of consequences of illegal hunting, illegal logging and excessive harvesting of forest products.
- (iv) Management and Mitigation plan for HCV 6
- Conduct delineation of the entire area of HCV as identified and put up signboard identifying HCV area and protect the area together with local community.
  - Provide free access to local community towards the area of Public Cemetery.

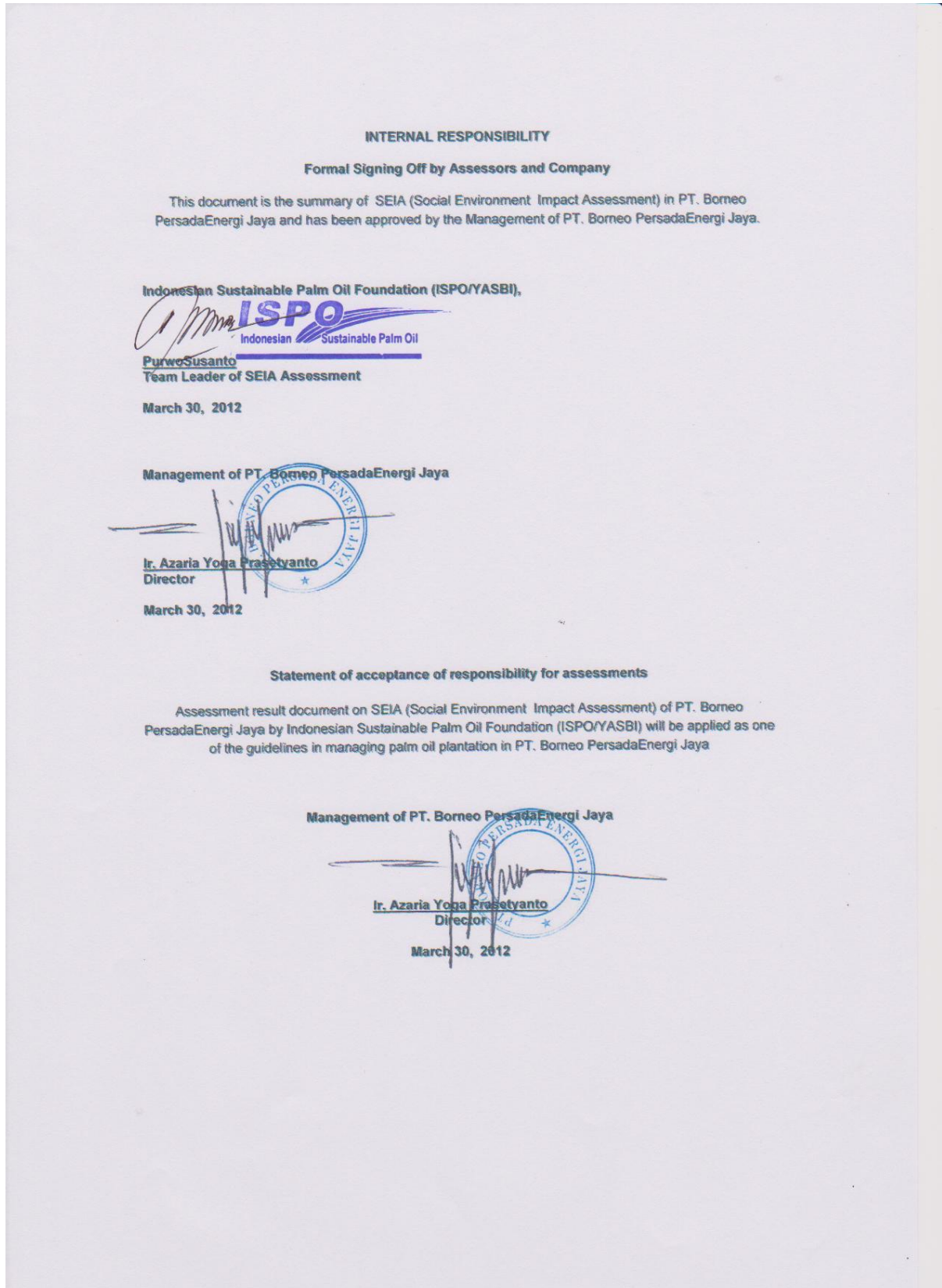
#### **4b.3 Management plans to enhance or maintain conservation values of identified HCV areas**

The process of Strategic Mapping, the Practical Vision was adopted in defining the Basic Targets. Those Basic Targets included six items to be achieved through the efforts of HCV management as follow:

- 1) The existing areas with key animals in the proposed area are conserved,
- 2) The sustainability of the local habitats is reserved,
- 3) The river banks function as the hydrological buffer (the protection for water cycle), ecology (the protection for wildlife species) is maintained,
- 4) The erosion risk and fire risk is managed and controlled,
- 5) Conserve water catchments areas
- 6) Preserve the local graveyards and cultural sites.

## 5. Internal responsibility

Formal signing off of management and mitigation plans.



**INTERNAL RESPONSIBILITY**

**Formal Signing Off by Assessors and Company**

This document is the summary of HCV (High Conservation Value) Assessment in PT. Borneo PersadaEnergi Jaya and has been approved by the Management of PT. Borneo PersadaEnergi Jaya.

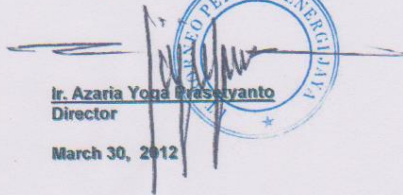
Indonesian Sustainable Palm Oil Foundation (ISPO/YASBI),



PurwoSusanto  
Team Leader of HCV Assessment

March 30, 2012

Management of PT. Borneo PersadaEnergi Jaya



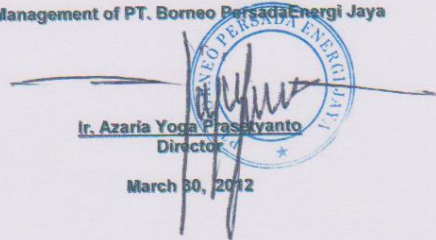
Ir. Azaria Yoga Prasetyanto  
Director

March 30, 2012

**Statement of acceptance of responsibility for assessments**

Assessment result document on High Conservation Value (HCV) Assessment of PT. Borneo PersadaEnergi Jaya by Indonesian Sustainable Palm Oil Foundation (ISPO/YASBI) will be applied as one of the guidelines in managing palm oil plantation in PT. Borneo PersadaEnergi Jaya

Management of PT. Borneo PersadaEnergi Jaya



Ir. Azaria Yoga Prasetyanto  
Director

March 30, 2012



## ATTACHMENT

### **Assessor of AMDAL (EIA)**

The AMDAL document of PT. Borneo Persada Energy Jaya was prepared by independent consultant PT. Integral Multi Talenta and approved by local government (Regent of Kutai Barat). The team members are :

1. Team Leader : Ir. Sulaeman, MP,
2. Team member : Fachrudin Azwari, ST, M.Si.
3. Team member : Desiana, Sp, M.Si.
4. Team member : Agus Nurhadi Irawan, S.Hut.
5. Team member : Ir. Andi Yusuf, M.P
6. Team member : Hariyani, S.Sos.
7. Team member : dr. Rivia Gina Rahmawaty

### **Assessor of HCV**

The HCV assessment was carried out by an independent consultant from YASBI in March 2012. The team members consist of consultant accredited and approved by the RSPO includes:

1. Ir. Purwo Susanto/ Ketua Tim
2. Iksal Yanuarsyah, S.Hut, M.Sc ( field coordinator)
3. Bukti Bagja S.Hut. MSi (HCV Analyst)
4. Dr. Wawan Gunawan, S.Hut., M.Si
5. R. Sukasmianto, SP ( environmental Aessor )
6. Dr. Iswan Dunggio, SP, M.Si

### **Assessor of SEIA**

The SEIA assessment was carried out by an independent consultant from YASBI in March 2012.

Team Leader : Ir. Purwo Susanto

Team member :

1. Ir. Hery Prasetyo. (Field Coordinator)
2. Kun Indriastuti Widowati, S.Sos., MSi (Social aspect)
3. Moh. Yasin, S.Fil.I (Environmental aspect)
4. Arief Wahyu Candra Susilo, S.Sos. (Economic aspect)
5. M. Alzim Suaidi Nas, S THi (Demographic aspect )