



Roundtable on Sustainable Palm Oil

RSPO NOTIFICATION OF PROPOSED NEW PLANTING

This notification shall be on the RSPO website for 30 days as required by the RSPO procedures for new plantings (<http://www.rspo.org/?q=page/535>). It has also been posted on local on-site notice boards.

Date of notification: 30 July 2014

Tick whichever is appropriate

	This is a completely new development and stakeholders may submit comments.
✓	This is part of an ongoing planting and is meant for notification only.

COMPANY : **FELDA**
SUBSIDIARY (If any) : **PT TEMILA AGRO ABADI**
RSPO Membership Number : 1-0013-04-000-00

Location of proposed new planting :

- Company name : PT Temila Agro Abadi
- Location : Villages of Sebangki, Rantau Panjang Agak, Kumpang Tengah, Sub district of Sebangki, District of Landak and Village of Kuala Mandor A, Sub district of Kuala Mandor B, District of Kubu Raya, Province of West Kalimantan, Indonesia.
- Geographical location : 0° 04' 1.82" - 0° 09' 51" North and 109° 35' 37" - 109° 37' 3.9" East
- Surrounding Entities :
 - a. North. PT Citra Niaga Perkasa Oil Palm Plantation concessions.
 - b. South. Landak River
 - c. West. Sambeh River.
 - d. East. Protected Forest Area
- New Planting Area : 8,000 Ha
- Permits :
 - a. Deed of Company on behalf PT Temila Agro Abadi from Republic of Indonesia Ministry of Law and Human Rights Number AHU-32895.AH.01.01 Tahun 2008 dated 13 June 2008 based on Notary Eliwaty Tjitra S.H.dated 15 March 2007 Number 110 based.
 - b. Taxable letter Inauguration: PEM-01132/WPJ.13/KP.0103/2007 dated 5 December 2007 from Republic of Indonesia Ministry of Finance with tax number 02.764.513.4-701.000 on behalf

PT Temila Agro Abadi, Jl.Karya Baru , Komp.Pondok Pelangi B.2/8, Parit Tkaya – South Pontianak, West Kalimantan, Indonesia.

c. Location Permit:

- Based on Landak Regency Decree No. 595.1/166/HK-2007 dated 18 July 2007 on Location Permit for Oil Palm Plantation Development Purposes at Sengah Temila and Sebangki Sub-district, Landak District, West Kalimantan Province, Indonesia to PT Temila Agro Abadi for the area of ± 20,000 ha. Location permit is valid for 3 years.
- Landak Regency Decree No. 595.1/225/Hk-2012 dated 1 October 2012 on Location Permit for Oil Palm Plantation Cultivation and Palm Oil Processing Plant Purposes at Sebangki Sub-district, Landak District, West Kalimantan Province, Indonesia to PT Temila Agro Abadi for the area of ± 8,193 ha. Location permit is valid for 3 years.

d. Plantation Business Permit (Izin Usaha Perkebunan/IUP).

- According to Landak Regency Decree No.525/7/HK-2009 dated 12 January 2009 on Approval of Oil Palm Plantation Business (IUP) Permit at to PT.Temila Agro Abadi for 8,000 Ha of oil palm plantation and 90 Ton FFB/Hours plant located in Sengah Temila and Sebangki Sub-district, Landak District

e. Social Environment Impact Assessment/ Analisa Dampak Mengenai Lingkungan (SEIA/AMDAL).

- Environmental Feasibility Permit of Plantation Activities (Area and ± 20,000 Ha) and the Palm Oil Processing Plant (Plant Capacity 90 Ton FFB/hour) by PT.Temila Agro Abadi in Landak District, West Kalimantan Province approved by Head of Landak Regency Decree Number.660.1/205/HK-2008 dated 3 September 2008

f. Land Right Title (Hak Guna Usaha).

Based on Head of Republic of Indonesia National Land Agency Decree No. 22/HGU/BPN RI/2011 dated 4 April 2011 for PT Temila Agro Abadi and Land Use Title (HGU) certificate number 30 dated 4 April 2011 for coverage area 1,000 ha located in Sebangki and Rantau Panjang Villages, Sebangki Sub-district, Landak District, West Kalimantan Province valid until 3 April 2046.

Figure 1. Location Map of PT. Temila Agro Abadi

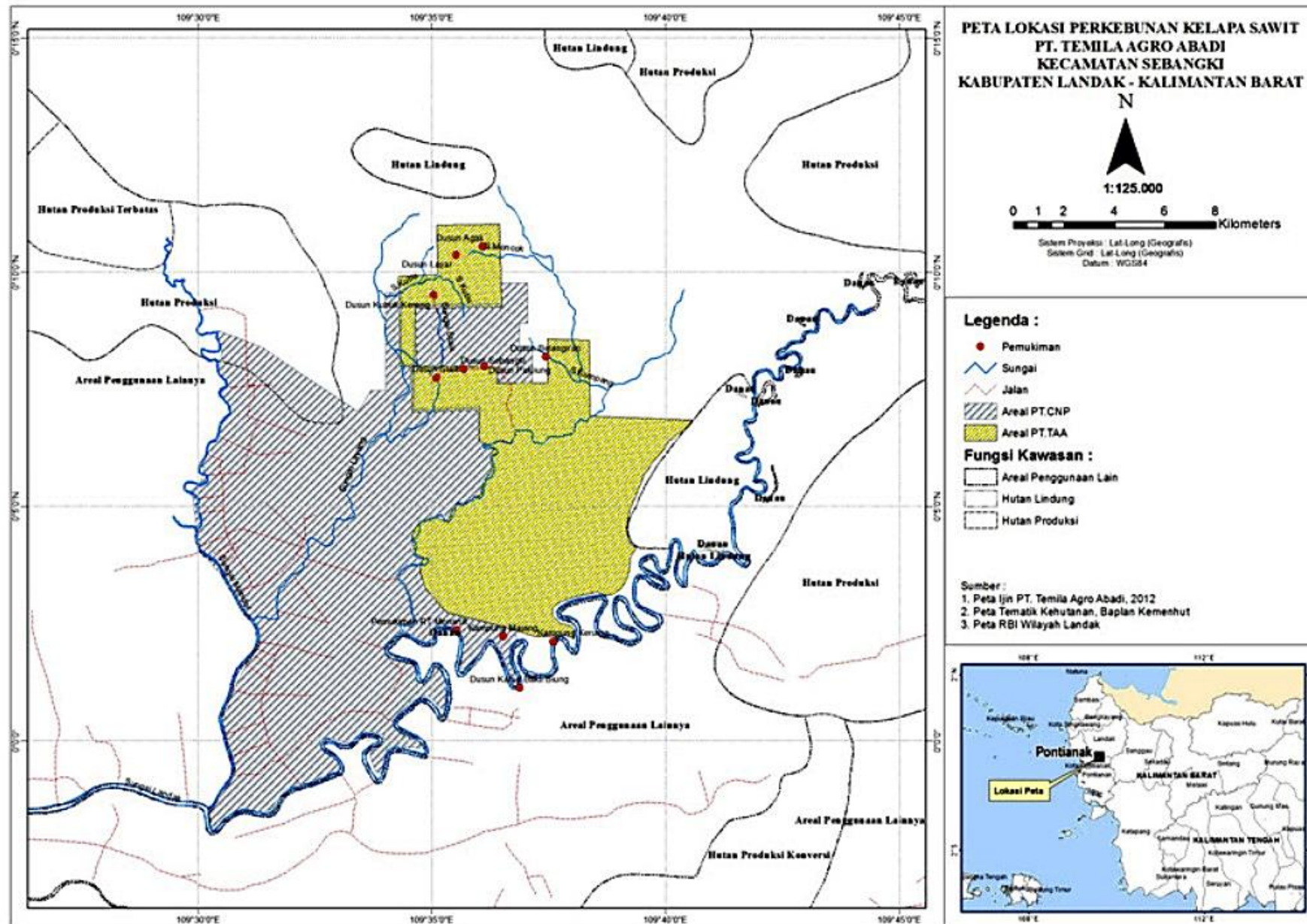


Figure 2. Location Permit Area Map of PT. Temila Agro Abadi

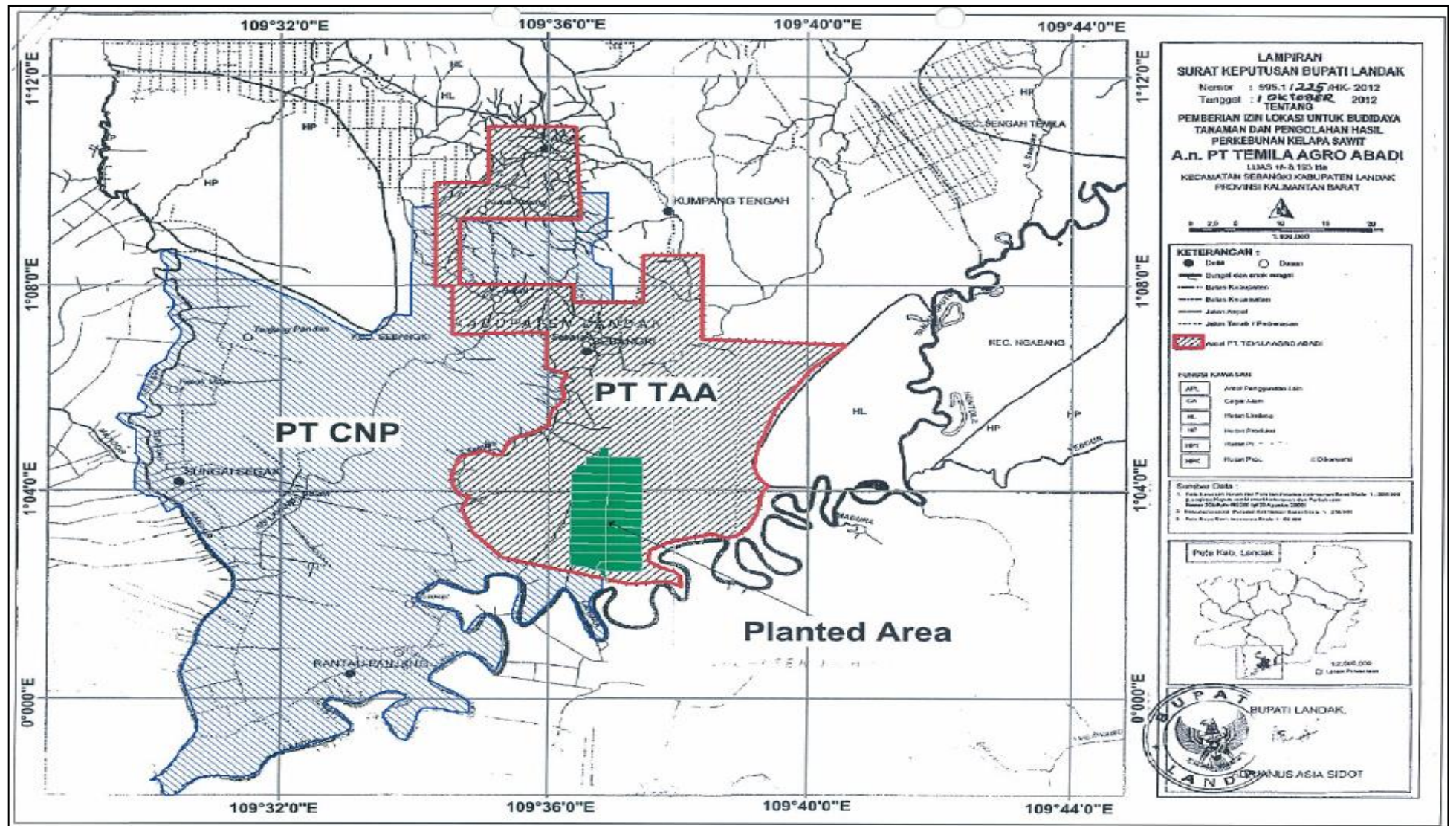


Figure 3. Planted Area Map of PT. Temila Agro Abadi

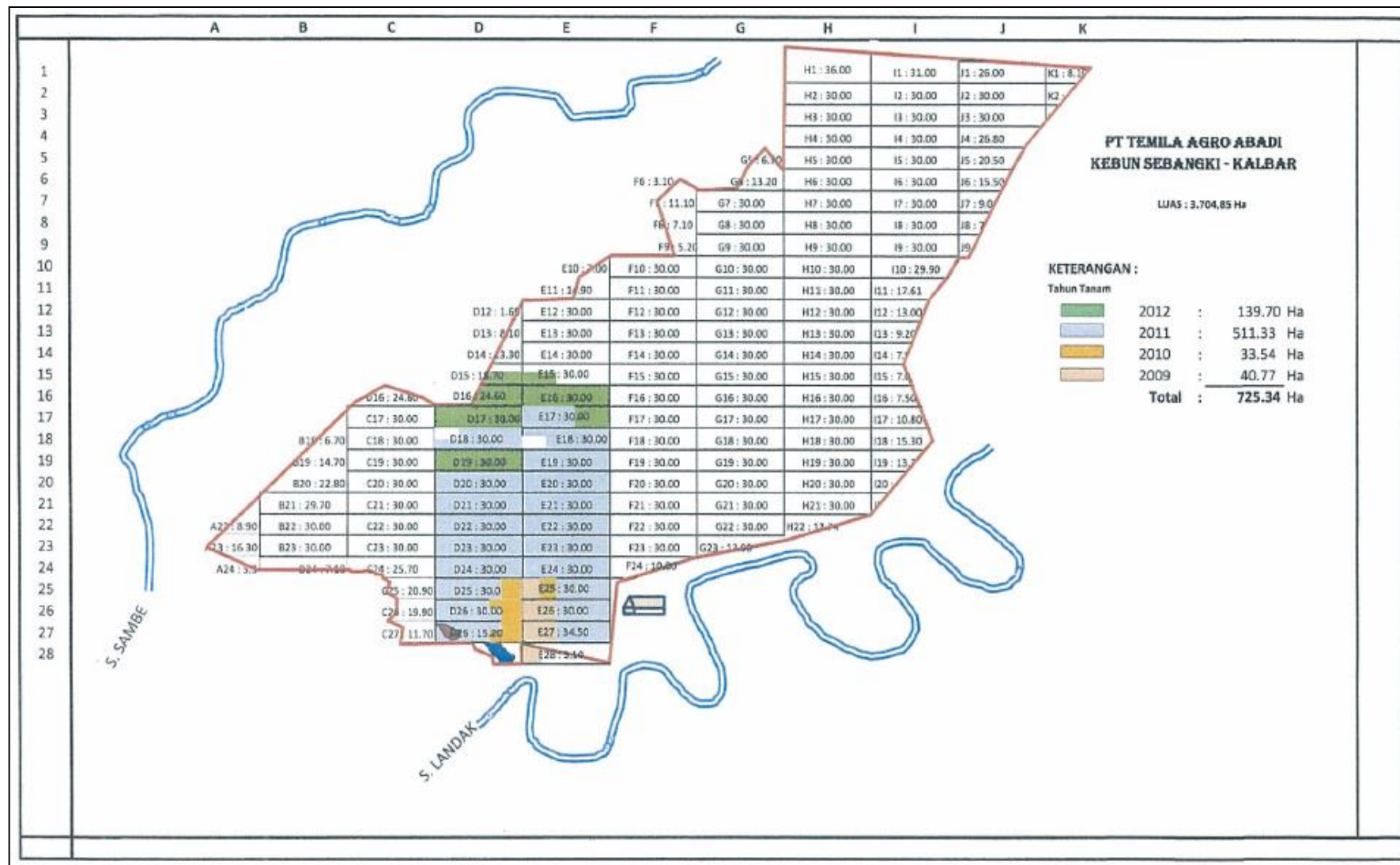


Figure 4. HCV Area Map of PT. Temila Agro Abadi

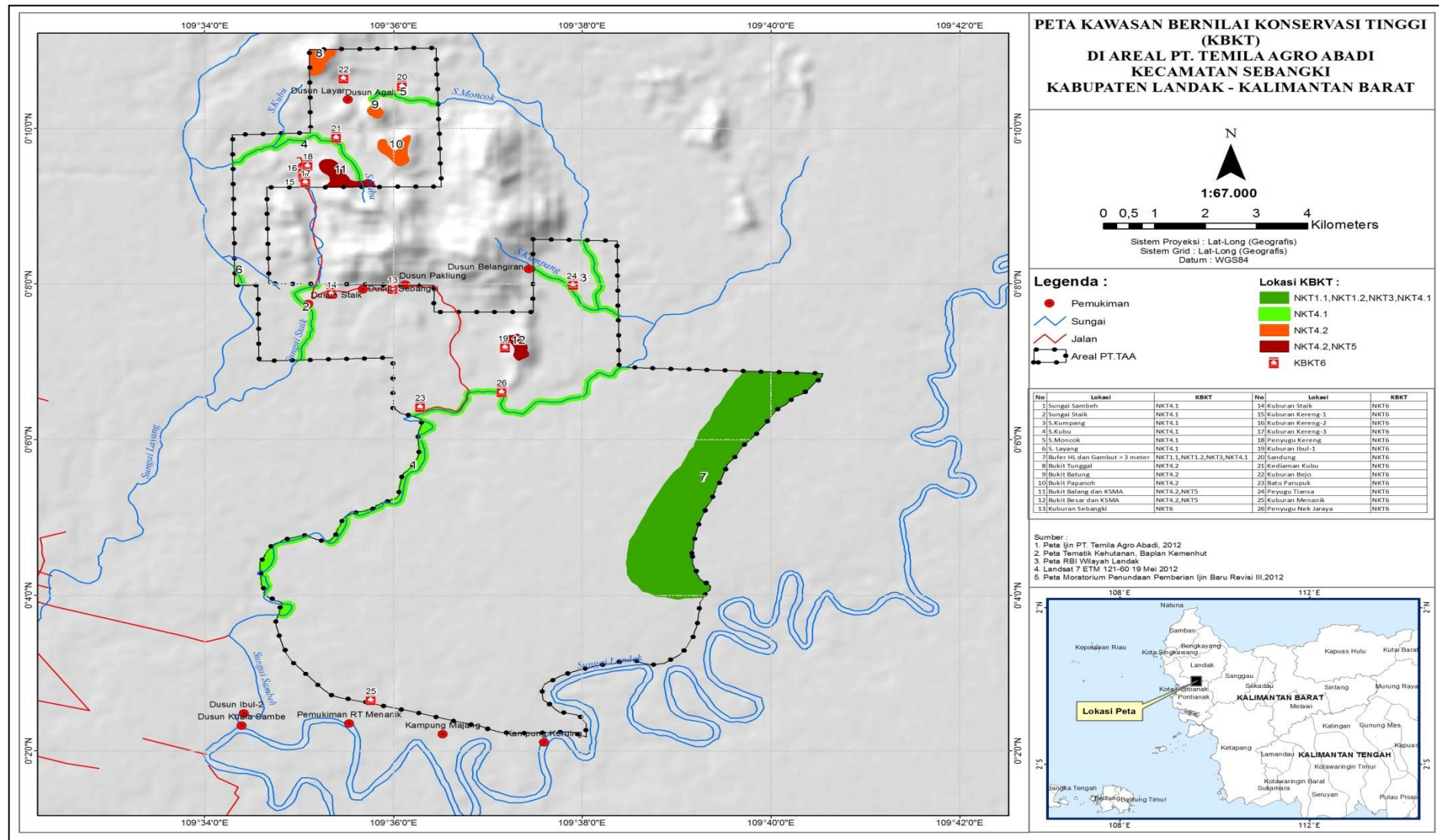
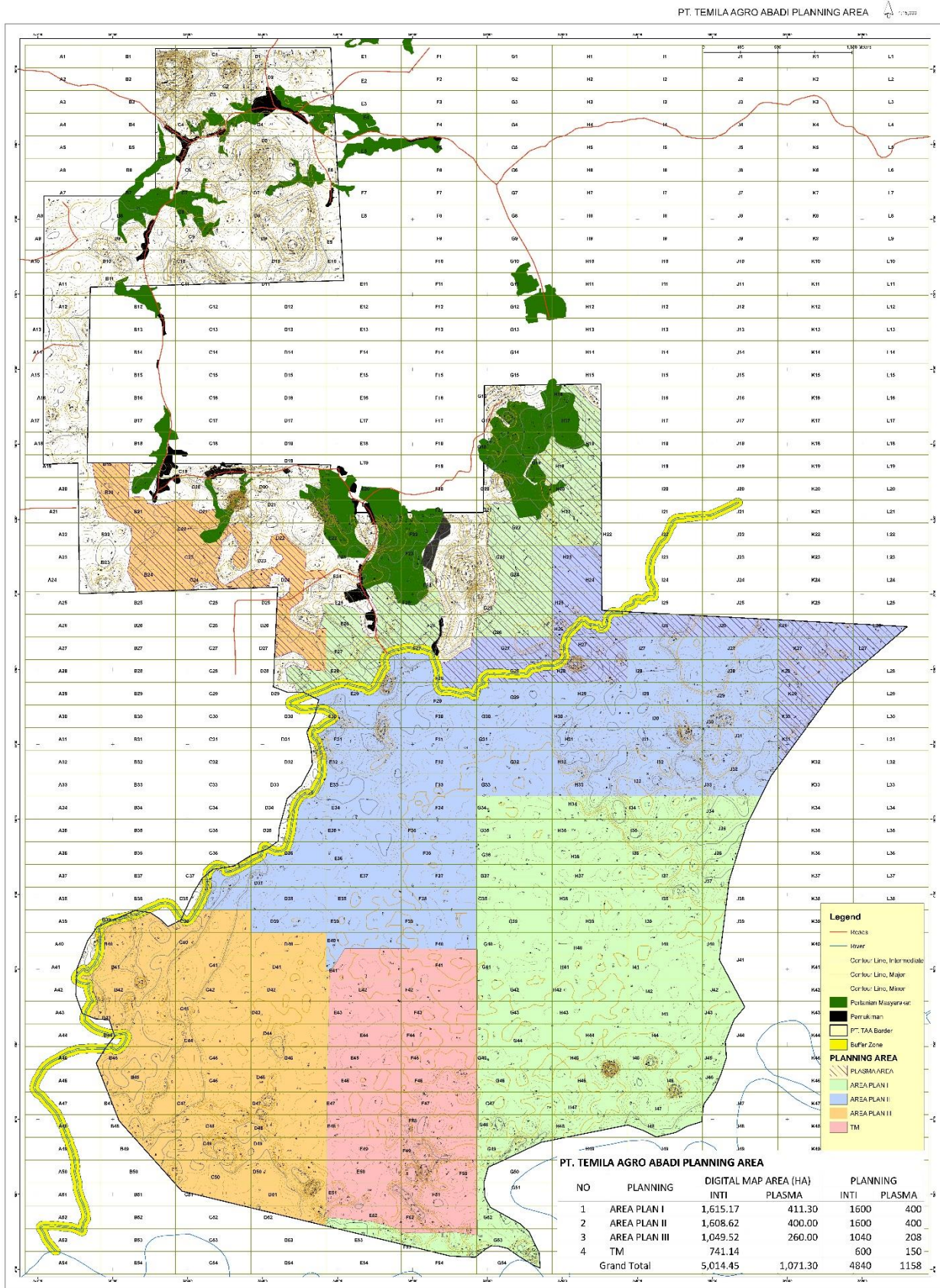


Figure 5. Land Cover Map of PT. Temila Agro Abadi



Interpretation of the Satellite Imagery Path/Row 121/60 of 12 May 2012

Figure 6. Plantation Development Plan Map of PT. Temila Agro Abadi

PT. TEMILA AGRO ABADI PLANNING AREA 1:15,000

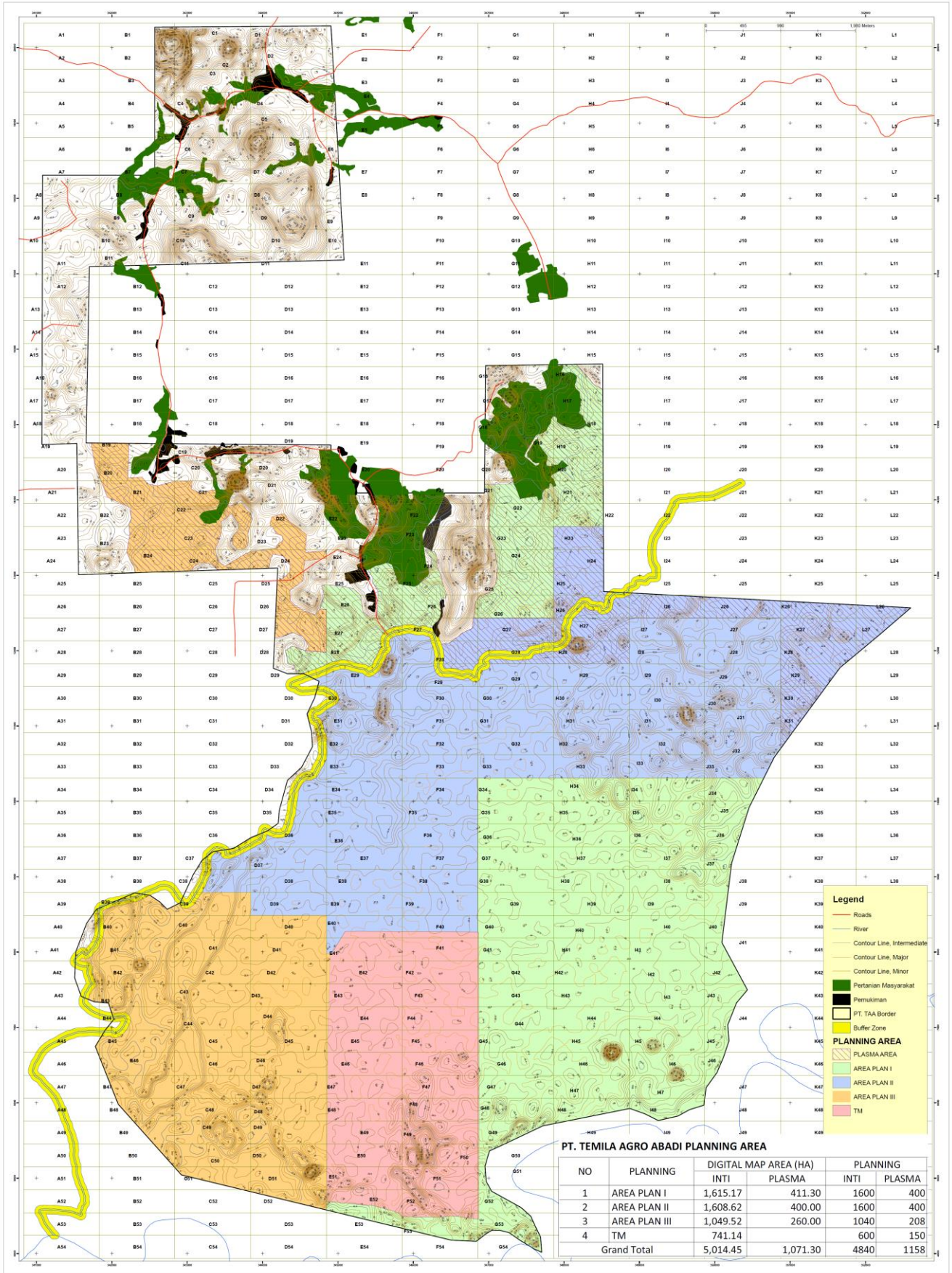


Table 1. Land Use Change Information of PT. Temila Agro Abadi from 2006-2012

No	Land Cover Class	Hectare (Ha)	
		2006	2012
1	Opened Area	747.08	983.69
2	Low Density of Swampy Secondary Forest	3,561.61	2,213.81
3	Medium Density of Swampy Secondary Forest	1,640.53	1,466.64
4	Mixed farming	1,190.04	1,482.54
5	Rubber farming Fields	1,053.76	1,311.25
6	Bushes	0	9.73
7	Oil Palm Plantation Area	0	725.34
TOTAL		8,193.00	8,193.00

SUMMARY FROM SEI ASSESSMENTS:

A Participative PT Temila Agro Abadi Social Environmental Impact Assessment (SEIA) has been conducted separately. The Social Impact Assessment (SIA) conducted by RSPO approved HCV assessors Dr.Ir.H.Nyoto Santoso, MS as Team Leader on 1-6 April 2013 and the Social Environmental Impact Assessment (AMDAL) conducted by government accredited assessors Derry Yulianto,S.Hut, Yudhi Andrian,ST, Rodiman,S.Hut, Eva Aprilia,SE, Helin Suryanti,ST, Sukma Indratanti,S.Hut,MP.

The SEIA field work which included in-depth interviews, as well as Focus Groups Discussions (FGD) and direct observations. Main issue studied in the assessment is company profile and general condition of the plantation area covering community perception, environmental, workers regulations (safety and health, labor union, workers facilities, work relationship, Impact to human capital (Job opportunities, Improvement on the level of community education, Increased public awareness of good agricultural practice and Development of alternative income generating activities to safeguard their economic standing after post-development of the project), Impact to natural capital (Companies' participation in managing water quality, Land acquisition should also receive community approval, Social Impact Management to social sustainability on internal estate communities) and the provision of facilities for workers. The assessment is also conducted to identify the demand of transparency aspect (principal 1) and legal compliance as well as applicable law (principal 2) stated in P&C RSPO Indonesia, community perception upon plantation, as well as the existence of conservation area based on HCV toolkit Indonesia.

The SEIA covered a review of documentary sources are collected through Focus Group Discussion (FGD), in-depth interview, government policy, and village profile data; besides, the assessment also covered field observation and public consultation meetings for the villages within the project area and for affected landowners of surrounding communities. Summaries and findings of the interviews and public consultation meetings are included in the SEIA report.

SUMMARY FROM HCV ASSESSMENT(S):

HCV assessment of PT Temila Agro Abadi operational area conducted by the RSPO approved assessors Dr.Ir.H.Nyoto Santoso, MS (Team Leader), Ir.Heru B Pulonggono, MSc (Hydrology and soil conservation), Ahmad Faisal Siregar, S.Hut (Social culture), Udi Kusdinar, S.Hut (Social culture), Sulfan Ardiansyah, S.Hut (Flora ecology), M.Sayidina Ali, A.Md (GIS and mapping), Sutopo, S.Hut (Wildlife ecology), Gilang Prastya Pambudi, S.Hut (Wildlife ecology). The field observation conducted on 1-7 April 2013. The assessment activities contained through preparation, field survey, public consultation, peer review and final reporting.

The assessment included satellite imagery analysis, collecting secondary data, extensive field surveys (mapping and landscaping, fauna aspect assessment, flora aspect assessment, culture economic social aspects assessment) and public consultations with the communities living in the project area for example on Landak District, Sebangki Sub-district, Sebangki village (Kuala Sambeh Hamlet), Kampung Tengah village (Belangiran Hamlet), Agak village (Hamlets of Agak, Layar and Kubu). Kubu Raya District, Kuala Mandor Sub-district, Kuala Mandor village (Karya Bhakti Biung Hamlet). The HCV assessment report included recommendations for the management and improvement of the HCV found within the project area.

The HCV identified in the PT.Temila Agro Abadi operational area clearly mapped. Based on identification and analysis of HCV presence there are found HCV1.1, HCV1.2, HCV3, HCV4.1, HCV4.2, HCV5 and HCV6 with total area coverage of 954.35 ha (11.65 % from the total IUP concession area of 8.193 Ha). No area supporting HCV 2 is identified. Location Plan and the area will be opening new land was not in the area of primary forest, however on the Other Use Area (APL/Areal Penggunaan Lain).

Table 2. Identification and Analysis of HCVs Presence (HCV1-6) in The Area of PT. Temila Agro Abadi

HCV Component	HCV Exist? Y/N	HCV Area	Area (Ha)
HCV 1.Areas with Important Levels of Biodiversity			
1.1. Areas that Contain or Provide biodiversity Support Function to Protection or Conservation Areas	Y	Protected Forest buffer	600.00
1.2. Critically Endangered Species	Y	<ul style="list-style-type: none"> • Protected Forest buffer • Sambeh River riparian • Papanoh hill 	<p style="text-align: right;">*)</p> <p style="text-align: right;">122.27</p> <p style="text-align: right;">26.30</p>
1.3. Areas that Contain Habitat for Viable Populations of Endangered, Restricted Range or Protected Species	N	Semberuang secondary forest; Senggilingan secondary forest.	
1.4. Areas that Contain Habitat of Temporary Use by Species or Congregations of Species	N	-	
HCV 2. Natural Landscapes & Dynamics			
2.1. Large Natural Landscapes with Capacity to Maintain Natural Ecological Processes and Dynamics	N	-	
2.2. Areas that Contain Two or More Contiguous Ecosystems	N	-	
2.3. Areas that Contain Representative Populations of Most Naturally Occurring Species	N	-	
HCV 3. Rare or Endangered Ecosystems	Y	Protected forest Buffer	*)
HCV 4. Environmental Services			
4.1 Areas or Ecosystems Important for the Provision of Water and Prevention of Floods for Downstream communities	Y	<ul style="list-style-type: none"> • Kubu River riparian • Kumpang River riparian • Mondok River riparian • Sambeh River riparian • Staik River riparian • Protected forest buffer • KSMA Bukit Balang • KSMA Bukit Besar 	<ul style="list-style-type: none"> • 39.22 • 38.74 • 14.56 • *) • 23.98 • *) • Inside the Bukit Baling area • Inside the Bukit Besar area
4.2. Areas Important for the Prevention of Erosion and Sedimentation	Y	<ul style="list-style-type: none"> • Buit Tunggal • Bukit Batung • Bukit Papanoh • Bukit Balang • Bukit Besar 	<ul style="list-style-type: none"> • 22.55 • 7.78 • 26.30 • 34.22 • 16.55
4.3. Areas that Function as Natural Barriers to the Spread of Forest or Ground Fire	N	-	

HCV5. Natural Areas Critical for Meeting the Basic Needs of Local People	Y	<ul style="list-style-type: none"> • KSMA Bukit Balang • KSMA Bukit Besar 	<ul style="list-style-type: none"> • Inside the Bukit Baling area • Inside the Bukit Besar area
HCV6. Areas Critical for Maintaining the Cultural Identity of Local Communities	Y	<ul style="list-style-type: none"> • Kubu Kereng Hamlet • Penyugu Kereng • Kereng 1 Sanctuary • Kereng 2 Sanctuary • Kereng 3 Sanctuary • Kemajo sanctuary (Layar Hamlet) • Sandung (Agak Hamlet) • Public sanctuary (Sebangki) • Public sanctuary (Staik Hamlet) • Public sanctuary (Ibul 1 Hamlet) • Penyuguk Nek Jaraya • Batu Prupuk sacret • Penyuguk Tiansa • Public sanctuary of Menanik 	<ul style="list-style-type: none"> • 0.5 • 0.5 • 0.001 • 0.001 • 0.001 • 0.5 • 0.5 • 0.5 • 0.25 • 1 • 0.0025 • 0.0025 • 0.0025 • 0.025
Total HCV areas			954.35

DOCUMENTATION OF FREE, PRIOR AND INFORMED CONSENT.

In accordance with RSPO requirements PT Temila Agro Abadi obtained free, prior and informed consent from the local community that would be affected by the development of the concession area or land that would be opened. Available evidence of the land acquisitions process on the operational area of PT Temila Agro Abadi with an area of 230 ha until May 2009. All documentation of all land acquisitions was available for example Land Right Release Statement Letter (Surat Pernyataan Penyerahan/Pelepasan Hak Pengelolaan Tanah) No.02/KPR/NJJ/SBK/2009 from Gantung Ancak Smallholders Group (Kelompok Tani Gantung Ancak) dated 25 may 2009.

SUMMARY OF PLANS:

The management plan of PT Temila Agro Abadi has incorporated the findings from SEIA (AMDAL), Social Impact Assessment (SIA) and HCV assessment for implementing the operational plans. Recommendations and also conclusion as result of SEIA and HCV has integrated in the management plan and consistent with RSPO P&C for New Plantings.

VERIFICATION STATEMENT:

PT Temila Agro Abadi opted for a document verification to conduct the New Planting Procedure. Mutuagung Lestari auditors have conducted desk study and discussions with sustainability officers during the desk verification. Two Mutuagung Lestari auditors were conducted the verification on 10 to 12 July 2014 to review and verify the relevant document and also interview with the management representatives.

The SEIA (AMDAL) conducted by the government approved consultants as well as the HCV and SIA assessments conducted by RSPO accredited and approved assessors. PT Temila Agro Abadi has adhered to RSPO New Planting Procedure and documented the assessments and plans are comprehensive and professionally carried out according to RSPO requirements and comply with the applicable RSPO Principles, Criteria and indicators for new plantings.

Signed for, on behalf of,
Mutuagung Lestari



Octo HP Nainggolan
Lead Auditor
25 July 2014

PT Temila Agro Abadi



Mohamed Affandi Mohamed Yusof
Senior General Manager
25 July 2014