



Roundtable on Sustainable Palm Oil

## RSPO NOTIFICATION OF PROPOSED NEW PLANTING

*This notification shall be on the RSPO website for 30 days as required by the RSPO procedures for new plantings (<http://www.rspo.org/?q=page/535> ). It has also been posted on local on-site notice boards.*

*Date of notification: 23 May 2014*

Tick whichever is appropriate

<input checked="" type="checkbox"/>	This is a completely new development and stakeholders may submit comments.
<input type="checkbox"/>	This is part of an ongoing planting and is meant for notification only.

**COMPANY : GENTING PLANTATIONS BERHAD**

**SUBSIDIARY (If any) : PT PERMATA SAWIT MANDIRI**

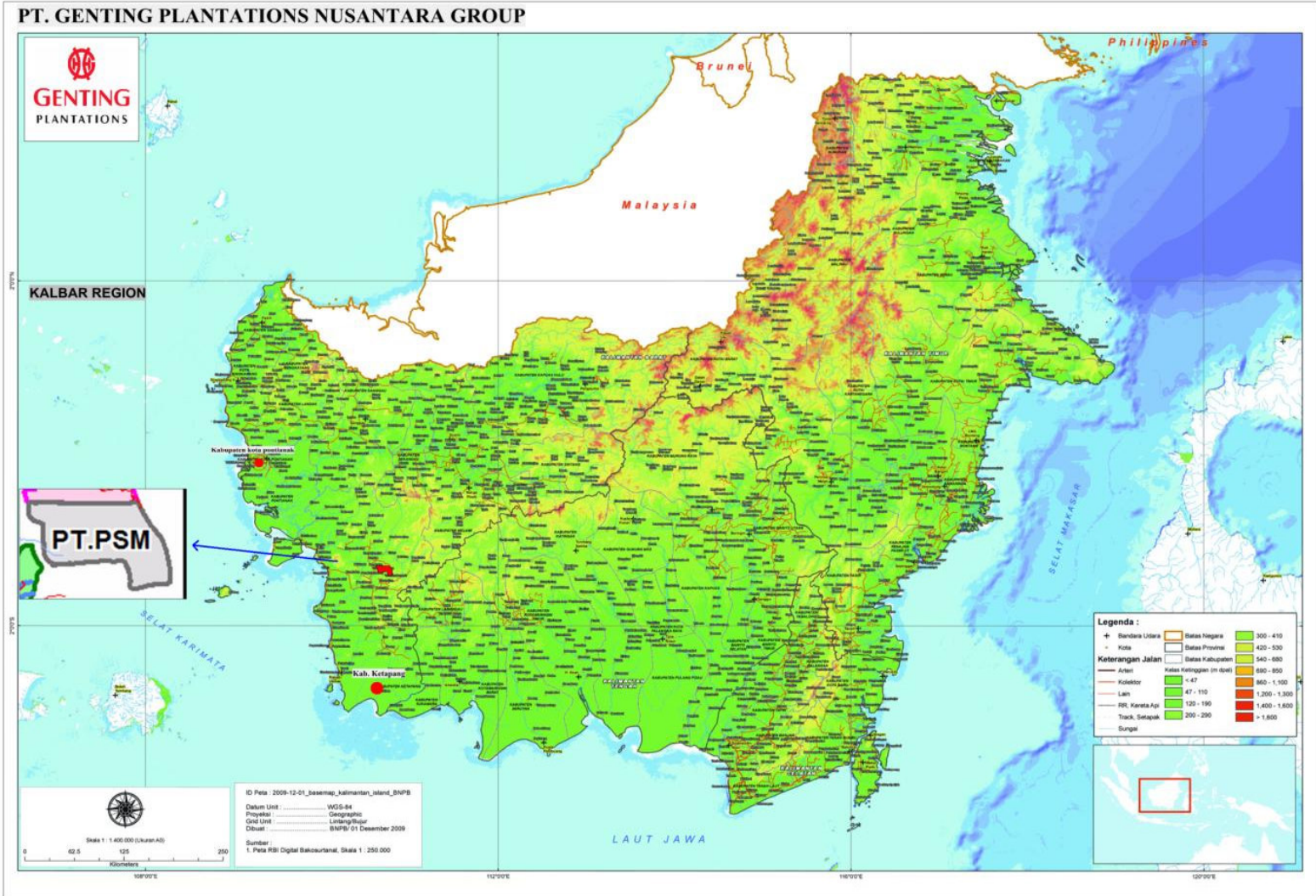
**RSPO Membership Number : 1-0086-06-000-00**

**Location of proposed new planting :**

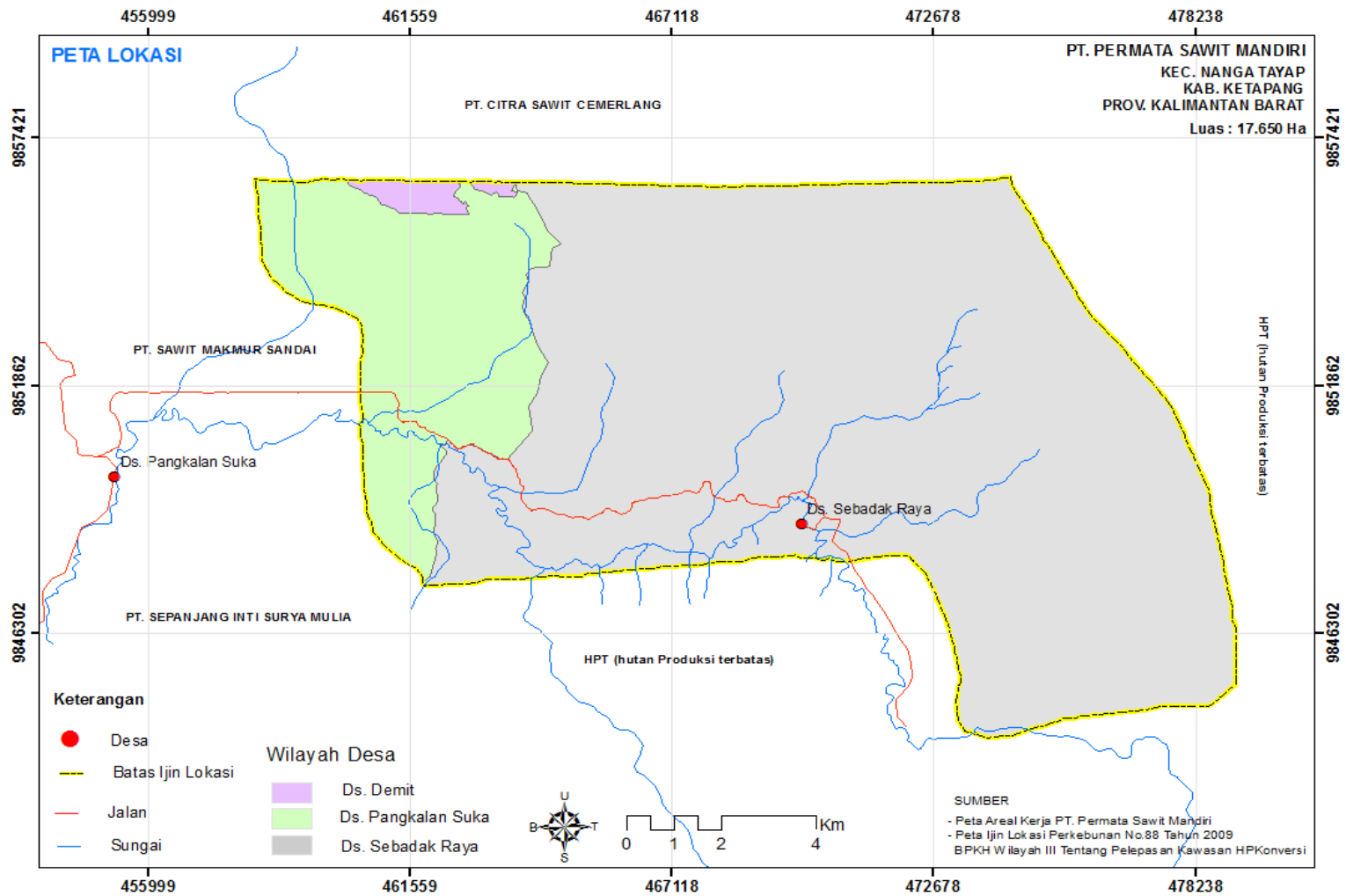
- Company name : PT Permata Sawit Mandiri
- Location : Pangkalan Suka and Sebadak Raya villages, Sub district of Nanga Tayap, District of Ketapang, Province of West Kalimantan, Indonesia.
- Geographical location : 01<sup>0</sup> 18' 25" - 01<sup>0</sup> 24' 40" North and 110<sup>0</sup> 37' 30" - 110<sup>0</sup> 49' 10" East
- Surrounding Entities :
  - a. North. Oil Palm Plantation PT Citra Sawit Cemerlang concession.
  - b. South. Limited Production Forest (Hutan Produksi Terbatas) and Sebadak Raya village boundary
  - c. West. Oil Palm Plantation PT Sepanjang Inti Surya Mulia and PT Sandai Makmur Sawit concessions.
  - d. East. Limited Production Forest (Hutan Produksi Terbatas) PT Wana Mukti Lestari
- New Planting Area : ± 17,022 Ha
- Permit :
  - a. Deed of Company on behalf PT Permata Sawit Mandiri dated 30<sup>th</sup> July 2004 Number 110 based Notary Edison Jingga S.H (Ministry of Justice Decree RI No.C-1522.HT.01.03-Th.2005 dated 2<sup>nd</sup> June 2005)
  - b. Taxable letter Inauguration: PEM-170/WPJ.05/KP.0403/2006 dated 27 January 2006 from Republic of Indonesia Ministry of Finance Regional Office of Directorate General of West Jakarta Taxation with tax number 02.189.261.7-037.000 dated 19 April 2005 on behalf PT Permata Sawit Mandiri Jl.Kebahagiaan No.38 004/001 Krukut, Tamansari Sub-district, West Jakarta District, Jakarta.
  - c. Location Permit:

- Location Permit for Oil Palm Plantation Development Purposes under name PT. Permata Sawit Mandiri based on Ketapang Regency Decree No. 377 of 2006 dated 21 December 2006 for an area of ± 19,500 ha of land located in Village of Pangkalan Suka/Tanjung Bunga, Sub-District of Sandai and Nanga Tayap, District of Ketapang. Location permit is valid for 3 years.
  - Based on Ketapang Regency Decree No. 41 of 2008 on Site Permit Renewal on Oil Palm Plantation Construction on behalf of PT Permata Sawit Mandiri dated 28 January 2008 for the land area of ± 17,650 ha in force until 12 months after the stipulated date of decision.
  - Based on Ketapang Regency Decree No. 88 of 2009 on Site Permit Renewal on Oil Palm Plantation Construction on behalf of PT Permata Sawit Mandiri dated 4 March 2009 for the land area of ± 17,360 ha in force until 12 months after the stipulated date of decision.
  - Based on Ketapang Regency Decree No. 502/PEM/2012 on Site Permit Renewal on Oil Palm Plantation Construction and Processing Plant on behalf of PT Permata Sawit Mandiri dated 5 December 2012 for the land area of ± 17,022 ha in force until one year after the stipulated date of decision.
- d. Converted Forest area release by the Republic Indonesia Ministry of Forestry Number:SK.395/Menhut-II/2013 dated 25 May 2013 on release of Forest Production Convertible For Oil Palm Plantation on Behalf of PT Permata Sawit Mandiri In Group of Sungai Ambawang Forest, Sandai and Nanga Tayap Sub-district, Ketapang District, West Kalimantan Province Covering an area of 16,999.2 (sixteen thousand nine hundred ninety nine point two) hectares.
- e. **Plantation Business Permit (Izin Usaha Perkebunan/IUP).**
- According to Ketapang Regency Decree No.551.31/0708/DISBUN-C dated 11 April 2005 on Oil Palm Plantation Business (IUP) Permit to PT.Sawit Murni for 19,500 Ha oil palm plantation and 80 Ton FFB/Hours plant.
  - Ketapang Regency Decree No.551.31/2748/DISBUN-D dated 15 November 2006 on Renewal of Oil Palm Plantation Business Permit (Izin Usaha Perkebunan) from PT Sawit Murni into PT Permata Sawit Mandiri for land area of 19,500 Ha oil palm plantation and 80 Ton FFB/Hours plant.
  - Ketapang Regency Decree No.525/923/BAPPEDA-D dated 14 November 2006 based on the letter the land information given to PT Sawit Murni based on Ketapang Regency Decree No.525/443/BAPPEDA-D for a land area 20,000 Ha has change the entity into PT Permata Sawit Mandiri.
- f. **Social Environmen Impact Assessment/ Analisa Dampak Mengenai Lingkungan (SEIA/AMDAL).**
- Environmental Feasibility Permit of Plantation Activities (Area and ± 16,999.2 Ha) and the Palm Oil Processing Plant (Plant Capacity 60 Ton FFB/hour) By PT.Permata Sawit Mandiri in Sub-district of Sandai and Nanga Tayap, Ketapang District, West Kalimantan Province by a West Kalimantan Regent Decree Number.221/BLHD/2014 dated 22 April 2014.

Figure 1. Location of PT Permata Sawit Mandiri



**Figure 2. Location Map of PT. Permata Sawit Mandiri**



**Figure 3. HCV Map of PT Permata Sawit Mandiri**

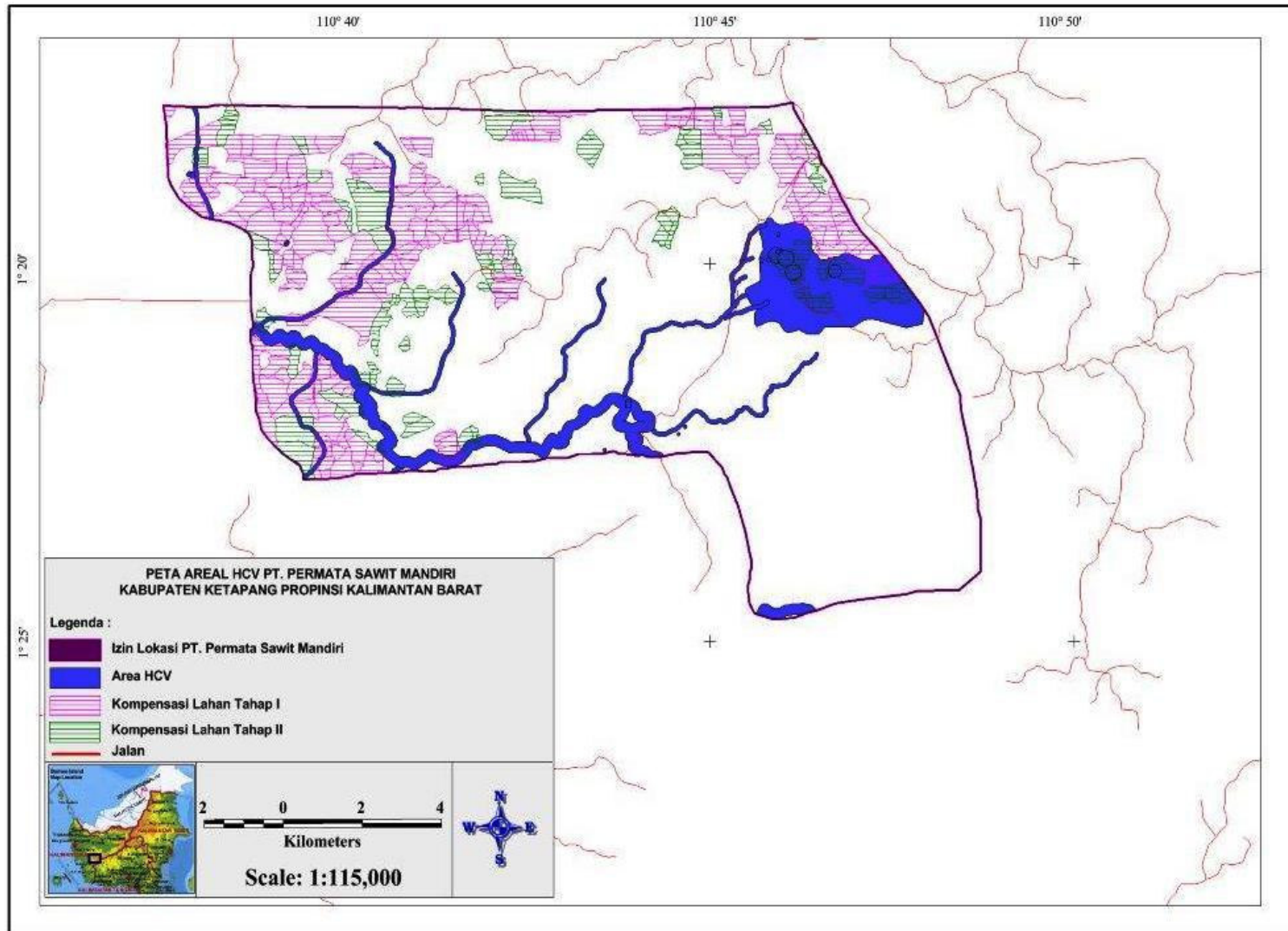
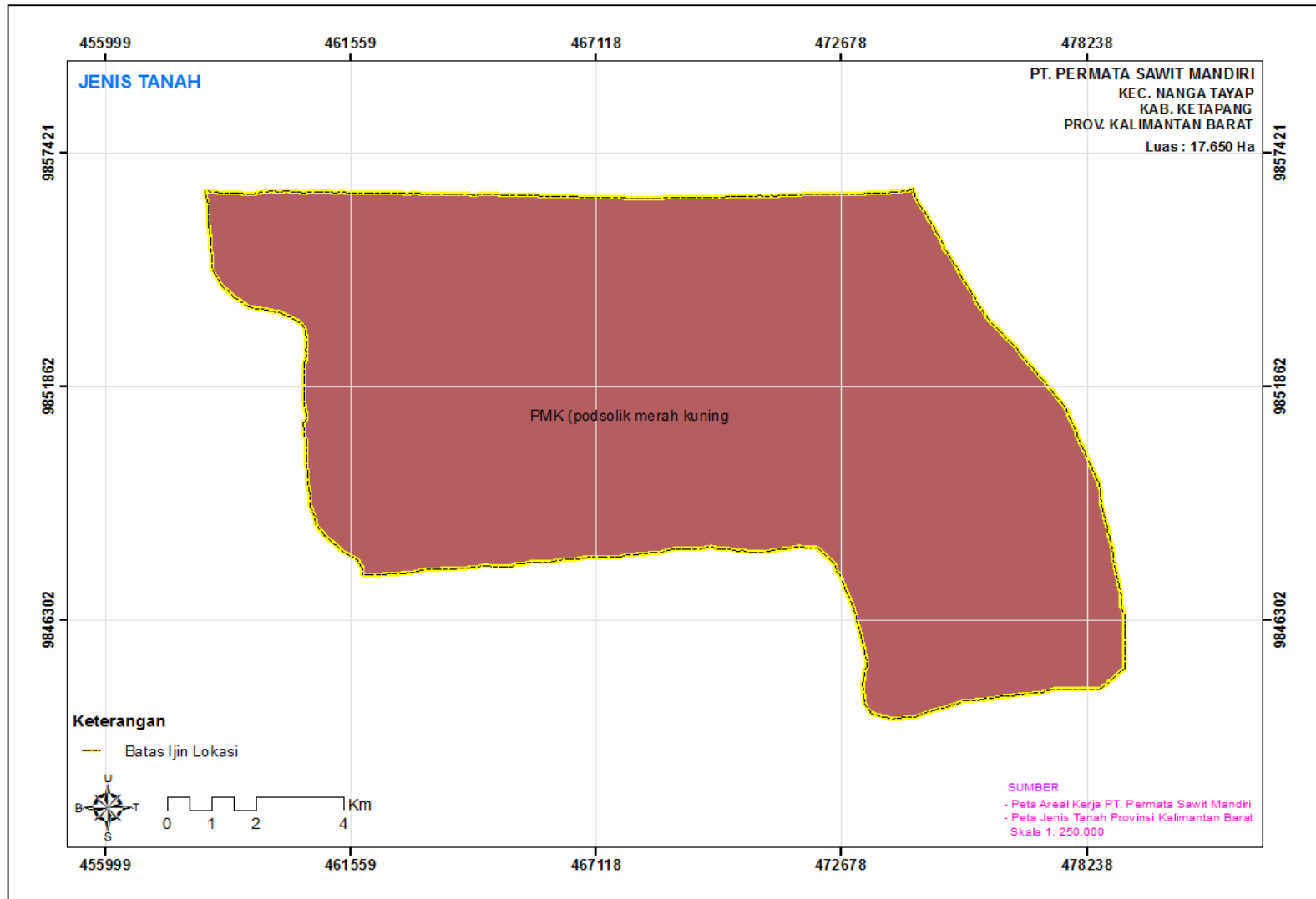


Figure 4. Soil Map of PT Permata Sawit Mandiri



## **SUMMARY FROM SEI ASSESSMENTS:**

A Participative Social Environmental Impact Assessment (SEIA) has been conducted separately. The Social Impact Assessment (SIA) conducted by PT Sonokeling Akreditasi Nusantara team and led by RSPO approved HCV assessor (Ir. Kresno Dwi Santosa, M.Si) on 21-27 November 2013 and the Social Environmental Impact Assessment (AMDAL) conducted by government accredited assessor (Derry Yulianto, S.Hut; Herlin Suryanti, ST).

The SEIA main issue studied in the assessment is company profile and general condition of the project covering demographic data, economic as well as availability of public transportation. The assessment is also conducted to identify the demand of transparency aspect (Principle 1) and legal compliance as well as applicable law (Principle 2) stated in P&C RSPO Indonesia, land availability, community perception upon project, as well as the existence of conservation area based on HCV toolkit Indonesia. The SEIA covered a review of documentary sources are collected through Focus Group Discussion (FGD), in-depth interview, government policy, and village profile data; besides, the assessment also covered field observation and public consultation meetings for the villages within the project area and for affected landowners of surrounding communities. Summaries and findings of the interviews and public consultation meetings are included in the SEIA report.

## SUMMARY FROM HCV ASSESSMENT(S):

HCV assessment of PT Permata Sawit Mandiri project was conducted by the PT Sonokeling Akreditasi Nusantara on 21-27 November 2013 and led by Ir. Kresno Dwi Santosa, M.Si.

The assessment included satellite imaginary analysis, extensive field surveys, and public consultations with the communities living in the project area (Villages of Pangkalan Suka and Sebadak Raya). The HCV assessment report included recommendations for the management and improvement of the HCV found within the project area.

The HCV identified in the PT.Permata Sawit Mandiri project area clearly mapped. Based on identification and analysis of HCV presence in the area of PT. Permata Sawit Mandiri there are found HCV1.1, HCV1.2, HCV1.3, HCV1.4, HCV2.3, HCV3, HCV4.1, HCV4.2, HCV5 and HCV6 with total area coverage of 1,455 ha. No area supporting HCV 3 is identified. Location Plan and the area will be opening new land was not in the area of primary forest, however on the Conversion Production Forest/Hutan Produksi Konversi (HPK)

**Table 1. Identification and Analysis of HCVs Presence (HCV1-6) in The Area of PT. Permata Sawit Mandiri**

HCV Component	HCV Exist? Y/N	HCV Area	Area (Ha)
<b>HCV 1.Areas with Important Levels of Biodiversity</b>			
1.1. Areas that Contain or Provide biodiversity Support Function to Protection or Conservation Areas	Y	Riparians of Benyuak River, Temuni River, Mahagang River, Tayap River and Secondary Forest of Bukit Layang	1217.66
1.2. Critically Endangered Species	Y	Secondary Forest of Bukit Layang	717.76
1.3. Areas that Contain Habitat for Viable Populations of Endangered, Restricted Range or Protected Species	Y	Riparians of Benyuak River, Temuni River, Mahagang River, Tayap River and Secondary Forest of Bukit Layang	1217.66
1.4. Areas that Contain Habitat of Temporary Use by Species or Congregations of Species	Y	Riparians of Benyuak River, Temuni River, Mahagang River, Tayap River and Secondary Forest of Bukit Layang	1217.66
<b>HCV 2. Natural Landscapes &amp; Dynamics</b>			
2.1. Large Natural Landscapes with Capacity to Maintain Natural Ecological Processes and Dynamics	N		
2.2. Areas that Contain Two or More Contiguous Ecosystems	N		
2.3. Areas that Contain Representative Populations of Most Naturally Occurring Species	Y	Riparians of Benyuak River, Temuni River, Mahagang River, Tayap River and Secondary Forest of Bukit Layang	1217.66
<b>HCV 3. Rare or Endangered Ecosystems</b>	N		
<b>HCV 4. Environmental Services</b>			
4.1 Areas or Ecosystems Important for the Provision of Water and Prevention of Floods for Downstream communities	Y	Riparians of Benyuak River, Temuni River, Bekaro River, Bunga River, Intip River, Mahagang River, Kebuai River, Pakit River, Sekadu River, Tayap River, Spring Awas River, Paruyo River, Pakit River, Bidan River.	1443.92
4.2. Areas Important for the Prevention of Erosion and Sedimentation	Y	Secondary Forest of Bukit Layang	717.76



4.3. Areas that Function as Natural Barriers to the Spread of Forest or Ground Fire	N		
<b>HCV5. Natural Areas Critical for Meeting the Basic Needs of Local People</b>	Y	Riparians of Tayap River, Soring of Awas River, Paruyo River, Pakit River, Bidan River, Secondary Forest of Bukit Layang, Madu Lubuk Tabuan Tree, Madu Jomai Tree, Madu Belaban Tree, Belian and Pohon Kruing Trees	1131.11
<b>HCV6. Areas Critical for Maintaining the Cultural Identity of Local Communities</b>	Y	Rparian of Tayap River, Secondary Forest of Bukit Layang, Nibung Pemali Sacred Forest, Bukit Tinggi Sacred Forest, Tembawang Patimbauan, Tembawang Betiti, Tembawang Pansi, Tembawang Benuah, Keramat Sebadak, Kucing Batu.	1087.45
<b>Total HCV areas</b>			<b>1455.00</b>

**Table 2. Summary of HCV assessment findings at PT Permata Sawit Mandiri**

No	HCV Findings	HCV Attribute	Ha
1	Border of River	1.1; 1.3; 1.4; 2.3; 4.1; 5; 6	680.53
2	Border of Springs	4.1; 5	45.78
3	Forest and Hill Area	1.1; 1.2; 1.3; 1.4; 2.3; 4.1; 4.2; 5; 6	717.76
4	Social Economy Identity	5	4.41
5	Social Cultural Identity	6	6.51
<b>Total</b>			<b>1455.00</b>

## **DOCUMENTATION OF FREE, PRIOR AND INFORMED CONSENT**

In accordance with RSPO requirements PT Permata Sawit Mandiri obtained free, prior and informed consent from the local community that would be affected by the development of the concession area or land that would be opened. Until the new planting verification there land compensation has been shown, however the company has conducted the socialization for plan of PT Permata Sawit Mandiri oil palm plantation and documented as follows:

- a. Minutes of the Meeting of Socialization Development of Oil Palm plantation in District PT.Permata Sawit Mandiri at Pangkalan Suka Village, Sub-district of Nanga Tayap, Ketapang District on 7 July 2013 attended by 56 participants from Chairman of the Dayak Culture Board of Nanga Tayap, Village Head and the Village Board of Trustees (BPD) Pangkalan Suka, company representative, community leader of Pangkalan Suka village.
- b. Minutes of the Meeting of Socialization Development of Oil Palm plantation in District PT.Permata Sawit Mandiri at Sebadak Raya Village, Sub-district of Nanga Tayap, Ketapang District on 12 July 2013 attended by 90 participants from Chairman of the Dayak Culture Board of Nanga Tayap, Village Head and the Village Board of Trustees (BPD) Pangkalan Suka, chief of Tanjung Bunga Hamlet, company representative, community leader of Pangkalan Suka village.

- c. Available evidence of the land acquisitions process on the operational area of PT Permata Sawit Mandiri contained 279 land spot with an area of 4,288.41 ha site from February until April 2014. All documentation of all land acquisitions was available.
- a. Land submission statement (Surat Pernyataan Pembebasan Lahan)
  - b. Land Compensation Agreement Letter (Surat Kesepakatan Gantirugi Lahan)
  - c. Land Data Collection Request Letter (Surat Permohonan Pendataan Lahan)
  - d. Land History Information Statement Letter (Surat Pernyataan Keterangan Riwayat Tanah)
  - e. Land Release Statement (Surat Pernyataan Pelepasan Tanah)
  - f. Location Map of Land Measurement (Peta Lokasi Yang diukur/digantirugi).
  - g. Land Acquisition Statement (Pernyataan Pemilik Lahan)
  - h. Authorization Letter (Surat Kuasa)

### **SUMMARY OF PLANS:**

The management plan of PT Permata Sawit Mandiri has incorporated the findings from SEIA (AMDAL), Social Impact Assessment (SIA) and HCV assessment for implementing the operational plans. Recommendations and also conclusion as result of SEIA and HCV has integrated in the management plan and consistent with RSPO P&C for New Plantings.

### **VERIFICATION STATEMENT:**

PT Permata Sawit Mandiri opted for a document verification to conduct the New Planting Procedures. Mutuagung Lestari auditors have conducted desk study and discussions with sustainability officers during the desk audit. Two Mutuagung Lestari auditors were conducted the audit at their office in Jakarta on 12-14 May 2014 to review and verify the relevant document and also interview with the management representatives.

The SEIA (AMDAL) conducted by the government approved consultants as well as the HCV and SIA assessments conducted by RSPO accredited and approved assessors. PT Permata Sawit Mandiri has adhered to RSPO New Planting Procedure and documented the assessments and plans are comprehensive and professionally carried out according to RSPO requirements and comply with the applicable RSPO Principles, Criteria and indicators for new plantings.

Signed for, on behalf of,  
Mutuagung Lestari



Octo HP Nainggolan  
Lead Auditor  
22 May 2014

PT Permata Sawit Mandiri

A handwritten signature in black ink, appearing to read 'Faizal Amri Amran'.

DR. Faizal Amri Amran  
Head of Sustainability  
22 May 2014