

Public

Date: 24 February 2023

**Public Notification: RSPO Initial Certification MS B Audit of Koperasi Unit Desa (KUD) Tri Daya (RSPO Membership: 1-0406-22-000-00)**

Dear Stakeholders,

This is to inform that Koperasi Unit Desa (KUD) Tri Daya with RSPO membership number (1-0429-23-000-00) had appointed BSI Services Malaysia Sdn Bhd ("BSI Malaysia") to conduct the Initial Certification (Eligibility, MSA, MSB) Audit located at Kalimantan Tengah Province. The audit will be conducted from 27 March – 1 April 2023 against the requirements of RSPO Independent Smallholder Standard – Indonesian National Interpretation endorsed on 14 February 2022. The supply chain model is Identity Preserved.

RSPO PO ID number of the Koperasi Unit Desa Tri Daya is: RSPO\_PO1000015289

Organization background: Organization Koperasi Unit Desa Tri Daya located in Jl. Poros Parenggean, Karang Tunggal Village Office RT.06 RW.02, Parenggean District, Kotawaringin Timur Regency, Kalimantan Tengah Province 74335, Indonesia. The organization was legally established on 17 February 2022. Organization consists of 210 smallholder members managing 867 land parcels with total 711.20 Ha oil palm plantation. The smallholder member of Koperasi Unit Desa Tri Daya received training, guidance and accompanied by Yayasan Javlec Indonesia. The smallholder members committed to support sustainable oil palm.

1. The information of the production data to be assessed are as follows:

Koperasi Unit Desa (KUD) Tri Daya		
<b>Independent Smallholder Group Name</b>		Koperasi Unit Desa (KUD) Tri Daya
<b>Number of group member</b>		210 smallholder members with 867 land parcels
<b>Address / Location</b>		Jl. Poros Parenggean, Karang Tunggal Village Office RT.06 RW.02, Parenggean District, Kotawaringin Timur Regency, Kalimantan Tengah Province 74335, Indonesia
<b>GPS Reference</b> (in degree. minute & second)	<b>Latitude</b>	0° 30' 51.81" N
	<b>Longitude</b>	100° 42' 4.30" E
<b>Forecast Annual Output (MT)</b>	<b>CPO</b>	2,800.00 MT
	<b>PK</b>	700.00 MT
	<b>FFB</b>	14.000.00 MT

2. The Smallholders Member details are as follows:

No.	Estate / Member	Location	GPS Coordinates		Area Summary (Ha)		Annual FFB Forecast (MT)	Liability Status (L/NL)	Joining date (for ISH)
			Latitude	Longitude	Total Certified Area	Planted Area			
1	Abdul Hamid. H. M. Daud Sutrisno 1	Karang Tunggal	112° 51' 25.056" E	1° 59' 41.600" S	1	1	24.96	NL	2021
2	Abdul Hamid. H. M. Daud Sutrisno 2	Karang Tunggal	112° 51' 24.385" E	2° 0' 10.618" S	1	1	22.80	NL	2021

Public

3	Abdul Hamid. H. M. Daud Sutrisno 3	Karang Tunggal	112° 50' 7.316" E	2° 0' 27.334" S	0.75	0.75	0	L	2021
4	Abdul Hamid. H. M. Daud Sutrisno 4	Karang Tunggal	112° 50' 43.139" E	2° 0' 13.406" S	0.25	0.25	5.64	NL	2021
5	Abdul Hamid. H. M. Daud Sutrisno 5	Karang Tunggal	112° 50' 42.897" E	2° 0' 11.797" S	0.25	0.25	6.18	NL	2021
6	Abdul Hamid. H. M. Daud Sutrisno 6	Karang Tunggal	112° 50' 41.546" E	2° 0' 13.648" S	0.25	0.25	6.24	NL	2021
7	Abdul Hamid. H. M. Daud Sutrisno 7	Karang Tunggal	112° 52' 23.903" E	1° 59' 3.505" S	1.07	1.07	25.44	NL	2021
8	Abdul Hamid. H. M. Daud Sutrisno 8	Karang Tunggal	112° 52' 18.897" E	1° 59' 3.374" S	1.96	1.96	43.65	NL	2021
9	Abdul Hamid. H. M. Daud Sutrisno 9	Karang Tunggal	112° 50' 49.254" E	2° 0' 12.323" S	0.25	0.25	4.69	NL	2021
10	Abdul Hamid. H. M. Daud Sutrisno 10	Karang Tunggal	112° 50' 50.841" E	2° 0' 12.521" S	0.25	0.25	5.04	NL	2021
11	Abdul Rohmat 1	Karang Tunggal	112° 51' 54.007" E	1° 59' 27.631" S	0.24	0.24	5.64	NL	2021
12	Abdul Rohmat 2	Karang Tunggal	112° 51' 7.523" E	2° 0' 27.393" S	0.75	0.75	18.72	NL	2021
13	Agoes	Karang Tunggal	112° 50' 38.573" E	2° 0' 46.236" S	0.68	0.68	17.76	NL	2021
14	Agus Riyanto	Karang Tunggal	112° 51' 35.574" E	1° 59' 21.636" S	1	1	23.76	NL	2021
15	Agus Siswanto 1	Karang Tunggal	112° 51' 1.302" E	2° 0' 22.792" S	1	1	24.48	NL	2021
16	Agus Siswanto 2	Karang Tunggal	112° 50' 34.398" E	2° 0' 13.085" S	0.25	0.25	4.32	NL	2021
17	Ahmad Sukemi 1	Karang Tunggal	112° 50' 27.217" E	1° 59' 29.379" S	0.75	0.75	0	L	2021
18	Ahmad Sukemi 2	Karang Tunggal	112° 50' 40.986" E	1° 58' 58.300" S	0.8	0.8	0	NL	2021
19	Akhmad Dzarín 1	Karang Tunggal	112° 51' 47.019" E	1° 59' 27.660" S	0.75	0.75	18.36	NL	2021
20	Akhmad Dzarín 2	Karang Tunggal	112° 51' 42.138" E	2° 0' 29.502" S	1.37	1.37	34.52	NL	2021
21	Akhmad Dzarín 3	Karang Tunggal	112° 51' 40.045" E	2° 0' 25.056" S	1.12	1.12	23.92	NL	2021
22	Akhmad Dzarín 4	Karang Tunggal	112° 51' 32.876" E	2° 0' 19.481" S	1	1	23.76	NL	2021
23	Andri Purwanto Sanjaya	Karang Tunggal	112° 52' 28.016" E	1° 59' 6.484" S	3.22	3.22	87.33	NL	2021
24	Andri Susanto 1	Karang Tunggal	112° 51' 7.748" E	2° 0' 54.854" S	1	1	23.76	NL	2021
25	Andri Susanto 2	Karang Tunggal	112° 50' 24.597" E	2° 0' 44.477" S	0.75	0.75	19.00	NL	2021
26	Ani Purwaningsih 1	Karang Tunggal	112° 51' 52.022" E	1° 58' 58.934" S	1	1	25.44	NL	2021
27	Ani Purwaningsih 2	Karang Tunggal	112° 51' 18.310" E	1° 59' 23.579" S	1	1	19.68	NL	2021
28	Ani Purwaningsih 3	Karang Tunggal	112° 52' 33.299" E	1° 59' 22.944" S	0.96	0.96	19.85	NL	2021

Public

29	Ani Purwaningsih 4	Karang Tunggal	112° 52' 33.529" E	1° 59' 26.150" S	1.568	1.568	33.86	L	2021
30	Ani Purwaningsih 5	Karang Tunggal	112° 52' 36.741" E	1° 59' 24.022" S	0.9062	0.9062	18.70	NL	2021
31	Ani Purwaningsih 6	Karang Tunggal	112° 52' 0.215" E	1° 59' 14.864" S	1.12	1.12	24.61	NL	2021
32	Anwar Musta'in 1	Karang Tunggal	112° 51' 46.860" E	1° 59' 34.944" S	1	1	19.68	NL	2021
33	Anwar Musta'in 2	Karang Tunggal	112° 51' 50.953" E	1° 59' 33.439" S	0.75	0.75	14.76	NL	2021
34	Anwar Musta'in 3	Karang Tunggal	112° 51' 51.520" E	2° 0' 13.908" S	0.75	0.75	15.15	NL	2021
35	Anwar Musta'in 4	Karang Tunggal	112° 51' 55.841" E	1° 59' 39.640" S	0.94	0.94	18.71	NL	2021
36	Anwar Musta'in 5	Karang Tunggal	112° 51' 44.929" E	1° 59' 4.793" S	0.75	0.75	0	L	2021
37	Anwar Musta'in 6	Karang Tunggal	112° 51' 43.342" E	1° 59' 4.649" S	1	1	18.89	NL	2021
38	Anwar Musta'in 7	Karang Tunggal	112° 51' 19.807" E	1° 59' 35.274" S	1	1	22.56	NL	2021
39	Anwar Musta'in 8	Karang Tunggal	112° 51' 16.816" E	1° 59' 33.764" S	1	1	19.63	NL	2021
40	Anwar Musta'in 9	Karang Tunggal	112° 52' 1.005" E	1° 59' 0.401" S	1	1	19.44	NL	2021
41	Ardi Susilo	Karang Tunggal	112° 50' 15.000" E	2° 0' 45.904" S	0.75	0.75	18.9	NL	2021
42	Asep Hendrawan 1	Karang Tunggal	112° 51' 6.607" E	1° 59' 34.746" S	0.25	0.25	18.36	NL	2021
43	Asep Hendrawan 2	Karang Tunggal	112° 51' 13.372" E	1° 59' 49.073" S	0.25	0.25	4.48	NL	2021
44	Asmad	Karang Tunggal	112° 50' 47.770" E	2° 0' 13.816" S	0.11	0.11	2.22	NL	2021
45	Atemo Senen 1	Karang Tunggal	112° 50' 38.556" E	1° 59' 20.363" S	0.75	0.75	0	L	2021
46	Atemo Senen 2	Karang Tunggal	112° 50' 38.999" E	1° 59' 50.319" S	1	1	0	L	2021
47	Badrudin 1	Karang Tunggal	112° 51' 32.314" E	1° 59' 41.823" S	1	1	19.44	NL	2021
48	Badrudin 2	Karang Tunggal	112° 51' 36.623" E	2° 0' 35.344" S	0.75	0.75	18.72	L	2021
49	Badrudin 3	Karang Tunggal	112° 51' 36.241" E	2° 0' 38.612" S	0.75	0.75	18.72	NL	2021
50	Badrudin 4	Karang Tunggal	112° 50' 1.058" E	2° 0' 17.894" S	0.25	0.25	5.64	NL	2021
51	Badrudin 5	Karang Tunggal	112° 51' 17.690" E	2° 0' 13.029" S	0.95	0.95	17.04	L	2021
52	Badrudin	Karang Tunggal	112° 52' 4.601" E	2° 0' 8.778" S	0.75	0.75	15.3	NL	2021
53	Barji 1	Karang Tunggal	112° 51' 4.680" E	1° 59' 11.669" S	0.75	0.75	17.28	NL	2021
54	Barji 2	Karang Tunggal	112° 51' 4.559" E	1° 59' 5.108" S	0.75	0.75	18.72	NL	2021
55	Barjono 1	Karang Tunggal	112° 51' 15.611" E	2° 0' 42.755" S	1	1	20.88	NL	2021

Public

56	Barjono 2	Karang Tunggal	112° 51' 7.295" E	2° 0' 22.632" S	1	1	23.76	NL	2021
57	Barjono 3	Karang Tunggal	112° 51' 6.582" E	2° 0' 35.091" S	0.25	0.25	5.46	NL	2021
58	Basiman 1	Karang Tunggal	112° 51' 25.007" E	1° 58' 58.008" S	1	1	22.32	NL	2021
59	Basiman 2	Karang Tunggal	112° 51' 33.678" E	1° 59' 46.143" S	1	1	22.24	NL	2021
60	Basiman 3	Karang Tunggal	112° 51' 0.104" E	2° 0' 34.299" S	1	1	22.56	NL	2021
61	Basiman 4	Karang Tunggal	112° 51' 1.344" E	1° 59' 33.265" S	1	1	21.6	NL	2021
62	Basiman 5	Karang Tunggal	112° 51' 7.266" E	1° 59' 29.387" S	0.99	0.99	21.82	NL	2021
63	Basiman 6	Karang Tunggal	112° 50' 44.625" E	1° 59' 28.014" S	0.86	0.86	19.51	NL	2021
64	Basiman 7	Karang Tunggal	112° 51' 10.544" E	1° 59' 50.681" S	1	1	25.92	NL	2021
65	Basiman 8	Karang Tunggal	112° 52' 17.437" E	1° 59' 9.822" S	0.75	0.75	17.46	NL	2021
66	Basiman 9	Karang Tunggal	112° 52' 1.904" E	1° 59' 27.466" S	0.25	0.25	3.276	NL	2021
67	Basori 1	Karang Tunggal	112° 51' 14.339" E	1° 58' 58.255" S	0.75	0.75	16.92	NL	2021
68	Basori 2	Karang Tunggal	112° 51' 9.459" E	1° 59' 4.982" S	0.75	0.75	15.84	NL	2021
69	Basori 3	Karang Tunggal	112° 51' 9.580" E	1° 59' 11.530" S	0.75	0.75	16.92	NL	2021
70	Basori 4	Karang Tunggal	112° 51' 2.025" E	1° 58' 58.556" S	0.75	0.75	16.38	NL	2021
71	Basori 5	Karang Tunggal	112° 51' 7.873" E	1° 59' 56.148" S	0.25	0.25	0	NL	2021
72	Basori 6	Karang Tunggal	112° 51' 8.341" E	1° 59' 45.353" S	1.85	1.85	36.30	NL	2021
73	Basori 7	Karang Tunggal	112° 52' 30.232" E	1° 59' 23.423" S	0.25	0.25	5.63	NL	2021
74	Basori 8	Karang Tunggal	112° 52' 19.214" E	1° 59' 26.673" S	1.24	1.24	28.6	NL	2021
75	Basori 9	Karang Tunggal	112° 52' 10.722" E	1° 59' 37.322" S	1.28	1.28	26.01	L	2021
76	Basori 10	Karang Tunggal	112° 52' 17.462" E	1° 59' 38.164" S	2.27	2.27	48.63	NL	2021
77	Basuki 1	Karang Tunggal	112° 50' 8.749" E	2° 0' 36.973" S	0.75	0.75	17.28	NL	2021
78	Basuki 2	Karang Tunggal	112° 50' 6.594" E	2° 0' 22.479" S	0.75	0.75	12.4	NL	2021
79	Boyadi 1	Karang Tunggal	112° 51' 38.311" E	1° 59' 30.440" S	1	1	22.08	NL	2021

Public

80	Boyadi 2	Karang Tunggal	112° 51' 46.955" E	1° 59' 11.531" S	0.75	0.75	16.38	NL	2021
81	Boyadi 3	Karang Tunggal	112° 51' 11.456" E	1° 59' 37.930" S	0.6	0.6	12.59	NL	2021
82	Budiwati 1	Karang Tunggal	112° 51' 5.770" E	1° 59' 5.078" S	0.75	0.75	19.62	NL	2021
83	Budiwati 2	Karang Tunggal	112° 51' 2.211" E	1° 59' 11.765" S	0.75	0.75	14.94	NL	2021
84	Budiwati 3	Karang Tunggal	112° 51' 42.320" E	2° 0' 5.427" S	0.75	0.75	16.56	NL	2021
85	Budiwati 4	Karang Tunggal	112° 52' 2.542" E	1° 59' 32.112" S	0.75	0.75	18.72	L	2021
86	Budiwati 5	Karang Tunggal	112° 51' 33.606" E	2° 0' 11.810" S	0.25	0.25	5.64	NL	2021
87	Budiwati 6	Karang Tunggal	112° 51' 31.515" E	2° 0' 38.058" S	0.25	0.25	3.24	NL	2021
88	Budiwati 7	Karang Tunggal	112° 51' 1.668" E	2° 0' 10.274" S	0.25	0.25	3.456	NL	2021
89	Budiwati 8	Karang Tunggal	112° 51' 8.734" E	1° 59' 46.069" S	0.25	0.25	5.4	NL	2021
90	Budiwati 9	Karang Tunggal	112° 51' 9.125" E	1° 59' 46.777" S	0.75	0.75	17.46	NL	2021
91	Budiwati 10	Karang Tunggal	112° 51' 13.129" E	1° 59' 46.441" S	0.75	0.75	18.72	NL	2021
92	Darmanto	Karang Tunggal	112° 50' 33.513" E	1° 59' 24.372" S	0.75	0.75	18.72	NL	2021
93	Darmi	Karang Tunggal	112° 50' 40.193" E	2° 0' 23.233" S	1	1	19.44	NL	2021
94	Darwati	Karang Tunggal	112° 50' 39.262" E	1° 59' 40.602" S	1	1	21.36	NL	2021
95	Dasimin	Karang Tunggal	112° 50' 54.660" E	2° 0' 23.679" S	1	1	25.92	NL	2021
96	Defika Setiani	Karang Tunggal	112° 52' 7.108" E	1° 59' 15.794" S	0.58	0.58	11.294	NL	2021
97	Dewi Novia Sari 1	Karang Tunggal	112° 51' 38.106" E	2° 0' 3.223" S	0.25	0.25	4.52	NL	2021
98	Dewi Novia Sari 2	Karang Tunggal	112° 51' 5.651" E	2° 0' 13.911" S	0.25	0.25	5.94	NL	2021
99	Dewi Novia Sari 3	Karang Tunggal	112° 51' 8.220" E	2° 0' 14.602" S	0.75	0.75	15.30	NL	2021
100	Didi Jainudin	Karang Tunggal	112° 51' 43.927" E	1° 58' 58.200" S	1	1	22.08	NL	2021
101	Edi Purwanto 1	Karang Tunggal	112° 51' 38.937" E	1° 59' 56.312" S	0.75	0.75	16.02	NL	2021
102	Edi Purwanto 2	Karang Tunggal	112° 51' 37.421" E	1° 59' 59.193" S	0.75	0.75	15.3	NL	2021
103	Edi Santoso	Karang Tunggal	112° 50' 24.451" E	2° 0' 14.735" S	0.25	0.25	3.96	NL	2021

Public

104	Edi Sulanti Aceng 1	Karang Tunggal	112° 51' 16.939" E	1° 58' 58.193" S	1	1	26.16	NL	2021
105	Edi Sulanti Aceng 2	Karang Tunggal	112° 51' 23.536" E	1° 59' 44.483" S	0.75	0.75	25.2	NL	2021
106	Edi Sulanti Aceng 3	Barunang Miri	112° 51' 48.181" E	2° 0' 4.816" S	1	1	19.44	NL	2021
107	Edi Sulanti Aceng 4	Karang Tunggal	112° 51' 11.322" E	2° 0' 52.017" S	0.25	0.25	4.98	NL	2021
108	Edi Sulanti Aceng 5	Karang Tunggal	112° 51' 8.870" E	2° 0' 45.246" S	1	1	19.2	NL	2021
109	Edi Sulanti Aceng 6	Karang Tunggal	112° 51' 14.861" E	2° 0' 49.188" S	1	1	4.86	NL	2021
110	Edi Sulanti Aceng 7	Karang Tunggal	112° 51' 11.696" E	2° 0' 48.818" S	1	1	25.92	NL	2021
111	Edi Sulanti Aceng 8	Karang Tunggal	112° 51' 10.901" E	2° 0' 27.844" S	1	1	26.4	NL	2021
112	Edi Sulanti Aceng 9	Karang Tunggal	112° 51' 5.398" E	2° 0' 44.784" S	1	1	7.896	NL	2021
113	Edi Winarno 1	Karang Tunggal	112° 51' 34.978" E	1° 59' 50.512" S	1	1	20.4	NL	2021
114	Edi Winarno 2	Karang Tunggal	112° 52' 2.945" E	1° 59' 46.931" S	0.75	0.75	14.54	NL	2021
115	Edi Winarno 3	Karang Tunggal	112° 52' 1.441" E	1° 59' 49.802" S	0.75	0.75	15.62	NL	2021
116	Edi Winarno 4	Karang Tunggal	112° 50' 41.115" E	1° 59' 1.138" S	0.82	0.82	16.84	NL	2021
117	Edy Suseno 1	Karang Tunggal	112° 51' 10.770" E	1° 59' 4.944" S	0.75	0.75	17.95	NL	2021
118	Edy Suseno 2	Karang Tunggal	112° 51' 15.784" E	1° 59' 11.353" S	0.75	0.75	14.86	NL	2021
119	Edy Suseno 3	Karang Tunggal	112° 51' 58.505" E	1° 58' 59.522" S	1	1	25.2	NL	2021
120	Edy Suseno 4	Karang Tunggal	112° 51' 5.465" E	1° 59' 27.258" S	1	1	25.92	NL	2021
121	Edy Suseno 5	Karang Tunggal	112° 50' 52.028" E	2° 0' 24.978" S	1	1	24.48	NL	2021
122	Edy Suseno 6	Karang Tunggal	112° 50' 52.825" E	2° 0' 18.502" S	1	1	19.2	NL	2021
123	Edy Suseno 7	Karang Tunggal	112° 51' 16.519" E	1° 59' 49.828" S	1.46	1.46	36.14	NL	2021
124	Edy Suseno 8	Karang Tunggal	112° 51' 16.180" E	1° 59' 51.030" S	0.37	0.37	9.23	NL	2021
125	Edy Suseno 9	Karang Tunggal	112° 51' 4.429" E	1° 59' 18.840" S	0.29	0.29	7.05	NL	2021
126	Edy Suseno 10	Karang Tunggal	112° 50' 56.189" E	1° 58' 59.041" S	1.04	1.04	24.61	NL	2021
127	Edy Suseno 11	Karang Tunggal	112° 50' 57.969" E	1° 59' 3.777" S	1.41	1.41	31.76	NL	2021



Public

128	Edy Suseno 12	Karang Tunggal	112° 51' 15.826" E	1° 59' 15.937" S	1	1	22.54	NL	2021
129	Eko Sasmito Basukesti	Karang Tunggal	112° 51' 53.004" E	1° 59' 12.077" S	0.75	0.75	14.55	NL	2021
130	Fahrudin 1	Karang Tunggal	112° 51' 30.272" E	2° 0' 6.429" S	1	1	20.88	NL	2021
131	Fahrudin 2	Karang Tunggal	112° 51' 5.000" E	2° 0' 19.515" S	1.07	1.07	23.32	NL	2021
132	Fahrudin 3	Karang Tunggal	112° 51' 4.904" E	2° 0' 20.293" S	0.23	0.23	5.07	NL	2021
133	Fahrudin 4	Karang Tunggal	112° 52' 17.340" E	1° 59' 6.499" S	0.25	0.25	6.01	NL	2021
134	Fahrudin 5	Karang Tunggal	112° 50' 51.031" E	1° 59' 3.931" S	1	1	24.72	NL	2021
135	Fauzi	Karang Tunggal	112° 51' 15.365" E	1° 59' 36.639" S	1	1	20.64	NL	2021
136	Ganiyanto 1	Karang Tunggal	112° 51' 28.004" E	2° 0' 24.190" S	1	1	20.4	NL	2021
137	Ganiyanto 2	Karang Tunggal	112° 51' 30.168" E	2° 0' 28.099" S	0.75	0.75	18.18	NL	2021
138	Gunawan 1	Karang Tunggal	112° 51' 26.074" E	2° 0' 0.576" S	1	1	25.44	NL	2021
139	Gunawan 2	Karang Tunggal	112° 51' 47.967" E	1° 59' 39.123" S	1	1	12.59	NL	2021
140	Gunawan 3	Karang Tunggal	112° 51' 9.247" E	2° 0' 42.013" S	0.75	0.75	19.80	NL	2021
141	Gunawan 4	Karang Tunggal	112° 50' 16.935" E	2° 0' 25.895" S	0.75	0.75	15.3	L	2021
142	H. Sarta 1	Karang Tunggal	112° 51' 10.430" E	2° 0' 31.870" S	1	1	20.4	NL	2021
143	H. Sarta 2	Karang Tunggal	112° 51' 10.714" E	2° 0' 29.435" S	0.25	0.25	5.76	NL	2021
144	H. Sarta 3	Karang Tunggal	112° 51' 20.358" E	2° 0' 30.162" S	0.25	0.25	4.98	NL	2021
145	H. Sarta 4	Karang Tunggal	112° 51' 14.113" E	2° 0' 55.594" S	1	1	25.92	NL	2021
146	H. Sarta 5	Karang Tunggal	112° 51' 10.001" E	2° 0' 35.546" S	1	1	24.96	NL	2021
147	H. Sarta 6	Karang Tunggal	112° 51' 9.624" E	2° 0' 38.780" S	1	1	19.44	NL	2021
148	H. Sarta 7	Karang Tunggal	112° 51' 19.980" E	2° 0' 33.399" S	1	1	19.44	NL	2021
149	H. Sarta 8	Karang Tunggal	112° 51' 8.896" E	2° 0' 22.816" S	0.25	0.25	4.98	NL	2021
150	H. Sarta 9	Karang Tunggal	112° 51' 10.524" E	2° 0' 31.045" S	0.25	0.25	6.54	NL	2021
151	H. Sarta 10	Karang Tunggal	112° 51' 10.240" E	2° 0' 33.520" S	0.25	0.25	6.3	NL	2021
152	H. Sarta 11	Karang Tunggal	112° 51' 10.805" E	2° 0' 28.634" S	0.25	0.25	5.94	NL	2021

Public

153	H. Sarta 12	Karang Tunggal	112° 51' 6.187" E	2° 0' 38.326" S	0.25	0.25	6.12	NL	2021
154	H. Sarta 13	Karang Tunggal	112° 51' 7.422" E	2° 0' 28.186" S	0.25	0.25	5.7	NL	2021
155	H. Sarta 14	Karang Tunggal	112° 51' 6.928" E	2° 0' 32.255" S	0.25	0.25	5.28	NL	2021
156	H. Sarta 15	Karang Tunggal	112° 51' 7.128" E	2° 0' 30.596" S	1	1	25.44	NL	2021
157	H. Sarta 16	Karang Tunggal	112° 51' 7.327" E	2° 0' 28.992" S	2.86	2.86	54.69	NL	2021
158	H. Sarta 17	Karang Tunggal	112° 51' 27.148" E	1° 59' 20.705" S	1	1	19.68	NL	2021
159	H. Sarta 18	Karang Tunggal	112° 50' 52.965" E	1° 59' 52.383" S	0.25	0.25	4.80	NL	2021
160	Hendro Kumoro	Karang Tunggal	112° 50' 49.832" E	1° 59' 14.901" S	0.4	0.4	8.40	NL	2021
161	Herbudi 1	Karang Tunggal	112° 51' 8.341" E	1° 59' 11.564" S	0.75	0.75	16.74	NL	2021
162	Herbudi 2	Karang Tunggal	112° 51' 32.471" E	1° 59' 34.595" S	1	1	25.92	NL	2021
163	Herbudi 3	Karang Tunggal	112° 51' 40.863" E	1° 59' 46.327" S	1	1	25.92	NL	2021
164	Herbudi 4	Karang Tunggal	112° 51' 23.390" E	1° 59' 51.804" S	1	1	25.92	NL	2021
165	Herbudi 5	Karang Tunggal	112° 51' 42.323" E	1° 58' 58.054" S	0.25	0.25	4.92	NL	2021
166	Herbudi 6	Karang Tunggal	112° 51' 5.708" E	1° 59' 50.087" S	0.15	0.15	3.24	NL	2021
167	Herbudi 7	Karang Tunggal	112° 51' 3.444" E	1° 59' 47.560" S	1	1	20.36	NL	2021
168	Herno Fandri Saptoto	Karang Tunggal	112° 50' 47.958" E	1° 59' 11.408" S	0.6	0.6	11.90	NL	2021
169	Ima Irmamah 1	Karang Tunggal	112° 50' 41.885" E	1° 59' 21.418" S	0.8322	0.8322	10.20	L	2021
170	Ima Irmamah 2	Karang Tunggal	112° 50' 43.743" E	1° 59' 19.904" S	0.3936	0.3936	7.24	L	2021
171	Ima Irmamah 3	Karang Tunggal	112° 50' 43.596" E	1° 59' 23.830" S	0.97	0.97	22.08	L	2021
172	Imron Rosidin	Karang Tunggal	112° 50' 45.161" E	1° 59' 32.309" S	0.75	0.75	15.62	NL	2021
173	Indar Indanah	Karang Tunggal	112° 52' 24.000" E	1° 59' 17.424" S	1.5	1.5	39.13	NL	2021
174	Isi Lestari 1	Karang Tunggal	112° 51' 20.727" E	2° 0' 26.997" S	1	1	15.12	NL	2021
175	Isi Lestari 2	Karang Tunggal	112° 51' 11.085" E	2° 0' 26.266" S	0.25	0.25	4.80	NL	2021
176	Isi Lestari 3	Karang Tunggal	112° 51' 10.995" E	2° 0' 27.058" S	0.25	0.25	5.28	NL	2021
177	Ita Islamiyati 1	Karang Tunggal	112° 51' 18.848" E	2° 0' 0.410" S	1	1	22.32	NL	2021
178	Ita Islamiyati 2	Karang Tunggal	112° 50' 28.379" E	2° 0' 37.330" S	0.75	0.75	15.30	L	2021



Public

179	Jayus Supriadi 1	Karang Tunggal	112° 51' 51.600" E	1° 59' 25.920" S	1	1	19.20	NL	2021
180	Jayus Supriadi 2	Karang Tunggal	112° 51' 22.729" E	1° 59' 36.747" S	0.75	0.75	16.20	NL	2021
181	Jayus Supriadi 3	Karang Tunggal	112° 50' 44.355" E	2° 0' 37.440" S	0.75	0.75	17.46	NL	2021
182	Jayus Supriadi 4	Karang Tunggal	112° 50' 24.358" E	2° 0' 42.856" S	0.75	0.75	19.62	NL	2021
183	Jayus Supriadi 5	Karang Tunggal	112° 50' 42.152" E	2° 0' 41.851" S	0.75	0.75	17.28	NL	2021
184	Jemangin 1	Karang Tunggal	112° 51' 54.540" E	2° 0' 8.140" S	1	1	23.04	NL	2021
185	Jemangin 2	Karang Tunggal	112° 51' 48.541" E	1° 59' 24.761" S	1	1	21.12	NL	2021
186	Jemangin 3	Karang Tunggal	112° 51' 21.870" E	1° 59' 54.683" S	1	1	25.92	NL	2021
187	Jemangin 4	Karang Tunggal	112° 51' 27.591" E	1° 59' 57.697" S	1	1	20.88	NL	2021
188	Jemangin 5	Karang Tunggal	112° 51' 24.759" E	2° 0' 23.812" S	1	1	24.72	NL	2021
189	Jemangin 6	Karang Tunggal	112° 51' 41.738" E	1° 59' 4.504" S	1	1	22.32	NL	2021
190	Jemangin 7	Karang Tunggal	112° 51' 42.753" E	1° 59' 11.151" S	1	1	20.88	NL	2021
191	Jemangin 8	Karang Tunggal	112° 51' 36.691" E	1° 59' 15.518" S	1	1	21.36	NL	2021
192	Jemangin 9	Karang Tunggal	112° 51' 37.924" E	1° 59' 10.714" S	1	1	15.79	NL	2021
193	Jemangin 10	Karang Tunggal	112° 50' 13.421" E	2° 0' 10.065" S	0.22	0.22	5.34	NL	2021
194	Jemangin 11	Karang Tunggal	112° 51' 2.199" E	1° 59' 35.817" S	0.24	0.24	5.13	NL	2021
195	Jemangin 12	Karang Tunggal	112° 50' 59.213" E	1° 59' 41.248" S	0.24	0.24	5.04	NL	2021
196	Jemangin 13	Karang Tunggal	112° 51' 1.550" E	1° 59' 45.519" S	0.25	0.25	6.31	NL	2021
197	Jemangin 14	Karang Tunggal	112° 51' 0.769" E	1° 59' 44.095" S	0.24	0.24	5.66	NL	2021
198	Jemangin 15	Karang Tunggal	112° 50' 56.766" E	1° 59' 42.048" S	0.25	0.25	5.4	NL	2021
199	Jemangin 16	Karang Tunggal	112° 51' 13.527" E	1° 59' 47.151" S	0.25	0.25	5.34	NL	2021
200	Jemangin 17	Karang Tunggal	112° 51' 15.459" E	1° 59' 47.452" S	0.75	0.75	18.49	NL	2021
201	Jiyat 1	Karang Tunggal	112° 51' 2.055" E	2° 0' 16.327" S	1	1	22.32	NL	2021
202	Jiyat 2	Karang Tunggal	112° 50' 3.722" E	2° 0' 36.071" S	0.75	0.75	6.12	NL	2021

Public

203	Jumadar Among 1	Karang Tunggal	112° 51' 43.464" E	1° 59' 47.692" S	0.75	0.75	18.18	L	2021
204	Jumadar Among 2	Karang Tunggal	112° 51' 38.497" E	1° 59' 23.175" S	1	1	24	NL	2021
205	Jumadar Among 3	Karang Tunggal	112° 51' 39.482" E	1° 59' 20.109" S	0.48	0.48	10.54	NL	2021
206	Jumari 1	Karang Tunggal	112° 51' 11.265" E	2° 0' 24.693" S	0.75	0.75	14.28	NL	2021
207	Jumari 2	Karang Tunggal	112° 50' 23.428" E	1° 59' 41.650" S	0.24	0.24	4.88	NL	2021
208	Jumari 3	Karang Tunggal	112° 50' 19.421" E	1° 59' 36.607" S	1	1	19.2	NL	2021
209	Jumari 4	Karang Tunggal	112° 50' 16.814" E	1° 59' 18.898" S	1	1	22.08	NL	2021
210	Jumari 5	Karang Tunggal	112° 50' 24.683" E	1° 59' 31.399" S	0.75	0.75	19.69	NL	2021
211	Jumawan 1	Karang Tunggal	112° 51' 47.510" E	2° 0' 0.796" S	0.75	0.75	15.12	NL	2021
212	Jumawan 2	Karang Tunggal	112° 51' 44.199" E	1° 59' 26.176" S	0.75	0.75	14.76	NL	2021
213	Jumawan 3	Karang Tunggal	112° 51' 40.187" E	2° 0' 4.311" S	1	1	23.28	NL	2021
214	Jumawan 4	Karang Tunggal	112° 51' 14.023" E	1° 59' 23.196" S	1	1	23.00	NL	2021
215	Jumawan 5	Karang Tunggal	112° 50' 23.411" E	1° 59' 32.405" S	0.75	0.75	19.62	NL	2021
216	Jumawan 6	Karang Tunggal	112° 50' 59.093" E	1° 59' 46.325" S	1	1	25.92	NL	2021
217	Jumawan 7	Karang Tunggal	112° 50' 57.835" E	1° 58' 58.928" S	0.5	0.5	10.98	NL	2021
218	Jumawan 8	Karang Tunggal	112° 50' 55.521" E	1° 59' 49.895" S	0.24	0.24	5.43	NL	2021
219	Jumi'at	Karang Tunggal	112° 51' 21.795" E	2° 0' 46.754" S	1	1	24.24	NL	2021
220	Kamirah 1	Karang Tunggal	112° 51' 3.212" E	1° 58' 58.506" S	0.75	0.75	19.44	NL	2021
221	Kamirah 2	Karang Tunggal	112° 51' 4.438" E	1° 58' 58.475" S	0.75	0.75	19.62	NL	2021
222	Kamirah 3	Karang Tunggal	112° 51' 47.705" E	1° 58' 52.016" S	1	1	20.64	NL	2021
223	Kamirah 4	Karang Tunggal	112° 50' 58.524" E	1° 59' 34.820" S	0.25	0.25	5.10	NL	2021
224	Kamirah 5	Karang Tunggal	112° 50' 51.289" E	1° 59' 35.070" S	0.25	0.25	5.70	NL	2021
225	Kamirah 6	Karang Tunggal	112° 51' 4.541" E	1° 59' 40.097" S	0.25	0.25	6.36	NL	2021
226	Kamirah 7	Karang Tunggal	112° 51' 2.318" E	1° 59' 41.850" S	1	1	19.20	NL	2021

Public

227	Kamirah 8	Karang Tunggal	112° 51' 0.000" E	1° 59' 42.674" S	1	1	20.16	NL	2021
228	Kantiran 1	Karang Tunggal	112° 50' 13.757" E	1° 59' 45.176" S	1	1	24.24	L	2021
229	Kantiran 2	Karang Tunggal	112° 50' 18.331" E	1° 59' 45.700" S	1	1	24.24	L	2021
230	Kardiman 1	Karang Tunggal	112° 51' 30.829" E	1° 59' 44.642" S	1	1	22.08	NL	2021
231	Kardiman 2	Karang Tunggal	112° 51' 57.335" E	1° 59' 36.792" S	0.75	0.75	0	L	2021
232	Kardiman 3	Karang Tunggal	112° 51' 55.205" E	1° 59' 35.672" S	0.75	0.75	19.62	NL	2021
233	Kardiman 4	Karang Tunggal	112° 51' 36.332" E	1° 59' 10.568" S	1	1	20.40	NL	2021
234	Karjiyo 1	Karang Tunggal	112° 51' 15.535" E	1° 58' 58.235" S	0.75	0.75	18.90	NL	2021
235	Karjiyo 2	Karang Tunggal	112° 51' 3.455" E	1° 59' 11.708" S	0.75	0.75	18.90	NL	2021
236	Karjiyo 3	Karang Tunggal	112° 51' 48.835" E	2° 0' 8.833" S	0.75	0.75	17.97	NL	2021
237	Karjiyo 4	Karang Tunggal	112° 51' 47.024" E	2° 0' 22.500" S	0.75	0.75	16.38	NL	2021
238	Karjiyo 5	Karang Tunggal	112° 51' 31.895" E	2° 0' 34.791" S	0.75	0.75	18.36	NL	2021
239	Karjiyo 6	Karang Tunggal	112° 51' 29.422" E	2° 0' 34.501" S	0.75	0.75	18.72	NL	2021
240	Karjiyo 7	Karang Tunggal	112° 51' 29.042" E	2° 0' 37.768" S	0.75	0.75	14.40	NL	2021
241	Karjiyo 8	Karang Tunggal	112° 51' 33.471" E	2° 0' 41.564" S	0.75	0.75	0	L	2021
242	Karjiyo 9	Karang Tunggal	112° 51' 28.666" E	2° 0' 41.002" S	0.75	0.75	0	L	2021
243	Karjiyo 10	Karang Tunggal	112° 51' 46.951" E	2° 0' 30.065" S	0.75	0.75	18.00	NL	2021
244	Karjiyo 11	Karang Tunggal	112° 51' 10.664" E	2° 0' 23.031" S	1	1	19.20	NL	2021
245	Karjiyo 12	Karang Tunggal	112° 51' 16.909" E	1° 59' 41.026" S	0.75	0.75	17.46	NL	2021
246	Karjiyo 13	Karang Tunggal	112° 50' 29.243" E	1° 59' 21.579" S	0.23	0.23	0	NL	2021
247	Karjiyo 14	Karang Tunggal	112° 50' 58.705" E	1° 59' 45.612" S	0.75	0.75	16.56	NL	2021
248	Karjiyo 15	Karang Tunggal	112° 51' 6.835" E	1° 58' 51.960" S	0.25	0.25	5.16	NL	2021
249	Karjiyo 16	Karang Tunggal	112° 52' 7.423" E	1° 59' 0.476" S	0.96	0.96	21.84	NL	2021
250	Karjiyo 17	Karang Tunggal	112° 52' 1.140" E	1° 59' 9.984" S	0.97	0.97	22.08	NL	2021

Public

251	Karno 1	Karang Tunggal	112° 51' 15.836" E	2° 0' 6.118" S	1	1	19.68	NL	2021
252	Karno 2	Karang Tunggal	112° 51' 21.723" E	2° 0' 1.925" S	1	1	22.08	NL	2021
253	Karno 3	Karang Tunggal	112° 50' 27.420" E	2° 0' 30.890" S	0.75	0.75	8.82	NL	2021
254	Karno 4	Karang Tunggal	112° 50' 47.719" E	2° 0' 1.789" S	0.25	0.25	1.29	NL	2021
255	Karno 5	Karang Tunggal	112° 52' 9.186" E	1° 59' 9.978" S	1.92	1.92	37.30	NL	2021
256	Kasroni 1	Karang Tunggal	112° 51' 13.022" E	1° 59' 59.172" S	1	1	25.68	NL	2021
257	Kasroni 2	Karang Tunggal	112° 52' 1.682" E	2° 0' 8.490" S	0.94	0.94	16.43	NL	2021
258	Katimun 1	Karang Tunggal	112° 51' 12.532" E	1° 59' 27.956" S	1	1	21.84	NL	2021
259	Katimun 2	Karang Tunggal	112° 51' 15.431" E	1° 59' 23.978" S	1	1	26.15	NL	2021
260	Katimun 3	Karang Tunggal	112° 51' 12.608" E	1° 59' 22.514" S	1	1	19.58	NL	2021
261	Katimun 4	Karang Tunggal	112° 50' 26.886" E	2° 0' 49.094" S	0.75	0.75	18.72	NL	2021
262	Katimun 5	Karang Tunggal	112° 51' 6.098" E	1° 59' 42.942" S	0.25	0.25	5.76	L	2021
263	Katimun 6	Karang Tunggal	112° 51' 5.318" E	1° 59' 41.518" S	0.25	0.25	6.36	L	2021
264	Katimun 7	Karang Tunggal	112° 51' 10.398" E	1° 59' 22.423" S	0.86	0.86	17.93	NL	2021
265	Katimun 8	Karang Tunggal	112° 51' 0.098" E	1° 59' 51.658" S	1.63	1.63	37.55	NL	2021
266	Katimun 9	Karang Tunggal	112° 51' 1.824" E	1° 59' 55.679" S	0.34	0.34	4.70	NL	2021
267	Klendran 1	Karang Tunggal	112° 50' 25.460" E	1° 59' 24.586" S	0.75	0.75	18.90	NL	2021
268	Klendran 2	Karang Tunggal	112° 50' 28.477" E	1° 59' 28.377" S	0.75	0.75	14.40	NL	2021
269	Klendran 3	Karang Tunggal	112° 50' 1.805" E	1° 59' 44.391" S	1	1	23.99	NL	2021
270	Kudiyono 1	Karang Tunggal	112° 51' 26.546" E	2° 0' 34.165" S	1	1	0	NL	2021
271	Kudiyono 2	Karang Tunggal	112° 51' 39.051" E	2° 0' 35.628" S	0.75	0.75	15.66	NL	2021
272	Kurnia Indriyanti	Karang Tunggal	112° 50' 58.995" E	1° 59' 13.755" S	0.92	0.92	21.10	NL	2021
273	Laren Al Aziz	Bukit Harapan	112° 52' 9.602" E	1° 59' 53.059" S	1.95	1.95	47.68	NL	2021
274	Lasimun 1	Karang Tunggal	112° 50' 43.762" E	2° 0' 41.617" S	0.75	0.75	16.38	NL	2021

Public

275	Lasimun 2	Karang Tunggal	112° 50' 46.036" E	2° 0' 24.002" S	1	1	23.04	NL	2021
276	Lasimun 3	Karang Tunggal	112° 50' 21.236" E	2° 0' 17.093" S	1.15	1.15	27.77	NL	2021
277	Lasimun 4	Karang Tunggal	112° 51' 56.544" E	2° 0' 18.072" S	0.25	0.25	5.28	L	2021
278	Lasimun 5	Karang Tunggal	112° 50' 48.314" E	2° 0' 25.716" S	0.35	0.35	7.10	NL	2021
279	Lasiyem 1	Karang Tunggal	112° 51' 42.360" E	1° 59' 43.485" S	1	1	22.80	NL	2021
280	Lasiyem 2	Karang Tunggal	112° 50' 52.496" E	2° 0' 10.808" S	0.25	0.25	2.20	NL	2021
281	Lesmiatun 1	Karang Tunggal	112° 50' 15.782" E	1° 59' 47.725" S	1	1	0	L	2021
282	Lesmiatun 2	Karang Tunggal	112° 50' 18.855" E	1° 59' 41.126" S	1	1	0	L	2021
283	Lesmiatun 3	Karang Tunggal	112° 50' 30.331" E	1° 59' 31.999" S	1	1	0	L	2021
284	Loso 1	Karang Tunggal	112° 51' 47.733" E	1° 59' 49.918" S	0.75	0.75	18.00	NL	2021
285	Loso 2	Karang Tunggal	112° 51' 41.983" E	1° 59' 50.513" S	0.75	0.75	0	L	2021
286	Loso 3	Karang Tunggal	112° 51' 48.390" E	1° 59' 53.849" S	0.75	0.75	18.36	NL	2021
287	Loso 4	Karang Tunggal	112° 51' 12.069" E	2° 0' 45.619" S	1	1	21.84	NL	2021
288	Loso 5	Karang Tunggal	112° 51' 37.915" E	2° 0' 45.362" S	0.75	0.75	17.46	NL	2021
289	Loso 6	Karang Tunggal	112° 51' 43.945" E	2° 0' 55.828" S	0.25	0.25	6.60	L	2021
290	Loso 7	Karang Tunggal	112° 51' 6.573" E	2° 0' 25.285" S	0.25	0.25	6.48	L	2021
291	Loso 8	Karang Tunggal	112° 51' 7.374" E	2° 0' 25.380" S	0.95	0.95	20.10	NL	2021
292	Loso 9	Karang Tunggal	112° 52' 4.177" E	1° 59' 0.442" S	0.75	0.75	14.76	NL	2021
293	M. Hayin 1	Karang Tunggal	112° 50' 50.005" E	2° 0' 14.857" S	1	1	23.28	NL	2021
294	M. Hayin 2	Karang Tunggal	112° 50' 28.719" E	1° 59' 15.749" S	0.75	0.75	14.94	NL	2021
295	M. Hayin 3	Karang Tunggal	112° 52' 10.465" E	1° 58' 54.830" S	0.51	0.51	9.83	NL	2021
296	M. Hayin 4	Karang Tunggal	112° 52' 15.444" E	1° 58' 56.787" S	1.21	1.21	29.24	NL	2021
297	M. Hayin 5	Karang Tunggal	112° 51' 56.871" E	2° 0' 28.551" S	2	2	44.64	NL	2021
298	Marka 1	Karang Tunggal	112° 51' 58.001" E	1° 59' 40.768" S	0.75	0.75	16.01	NL	2021

Public

299	Marka 2	Karang Tunggal	112° 51' 45.747" E	1° 59' 11.421" S	0.75	0.75	20.16	NL	2021
300	Marka 3	Karang Tunggal	112° 51' 28.583" E	1° 59' 17.858" S	1	1	24.24	NL	2021
301	Marka 4	Karang Tunggal	112° 50' 58.990" E	2° 0' 3.048" S	0.25	0.25	1.06	NL	2021
302	Marsono 1	Karang Tunggal	112° 51' 18.574" E	2° 0' 16.579" S	0.25	0.25	6.54	NL	2021
303	Marsono 2	Karang Tunggal	112° 51' 15.988" E	2° 0' 39.522" S	1	1	22.8	NL	2021
304	Marsono 3	Karang Tunggal	112° 51' 14.487" E	2° 0' 52.387" S	0.25	0.25	6.54	NL	2021
305	Marsono 4	Karang Tunggal	112° 51' 20.946" E	2° 0' 16.858" S	0.25	0.25	5.28	NL	2021
306	Marsono 5	Karang Tunggal	112° 51' 20.142" E	2° 0' 16.759" S	0.25	0.25	5.16	NL	2021
307	Marsono 6	Karang Tunggal	112° 51' 19.361" E	2° 0' 16.670" S	0.25	0.25	6.18	NL	2021
308	Marsono 7	Karang Tunggal	112° 51' 14.594" E	2° 0' 16.117" S	1	1	22.08	NL	2021
309	Marsono 8	Karang Tunggal	112° 51' 0.995" E	2° 0' 53.994" S	1	1	19.20	NL	2021
310	Marsono 9	Karang Tunggal	112° 51' 10.023" E	2° 0' 4.878" S	0.25	0.25	6.48	NL	2021
311	Marsono 10	Karang Tunggal	112° 50' 13.142" E	2° 0' 2.314" S	0.25	0.25	6.60	NL	2021
312	Marsono 11	Karang Tunggal	112° 51' 21.019" E	2° 0' 13.417" S	0.25	0.25	5.88	NL	2021
313	Marsono 12	Karang Tunggal	112° 51' 15.318" E	2° 0' 12.750" S	0.25	0.25	5.70	NL	2021
314	Marsono 13	Karang Tunggal	112° 51' 14.532" E	2° 0' 12.660" S	0.25	0.25	21.14	NL	2021
315	Marsono 14	Karang Tunggal	112° 50' 54.399" E	2° 0' 1.341" S	0.12	0.12	2.47	NL	2021
316	Marsono 15	Karang Tunggal	112° 50' 44.508" E	2° 0' 11.555" S	0.25	0.25	0	L	2021
317	Marsono 16	Karang Tunggal	112° 50' 54.227" E	2° 0' 2.944" S	1	1	24.24	NL	2021
318	Marsono 17	Karang Tunggal	112° 51' 21.854" E	2° 0' 13.491" S	1	1	20.08	L	2021
319	Miftah Asrofil Umar 1	Karang Tunggal	112° 50' 22.939" E	1° 59' 26.590" S	0.75	0.75	16.38	NL	2021
320	Miftah Asrofil Umar 2	Karang Tunggal	112° 50' 16.872" E	1° 59' 38.632" S	1	1	24.96	NL	2021
321	Minita Suryani	Palangka	112° 52' 32.387" E	1° 59' 10.210" S	4.23	4.23	91.24	NL	2021
322	Misdi	Karang Tunggal	112° 51' 42.871" E	1° 59' 21.777" S	1	1	20.40	NL	2021

Public

323	Misdiyono 1	Karang Tunggal	112° 50' 33.021" E	1° 59' 18.577" S	0.75	0.75	17.82	NL	2021
324	Misdiyono 2	Karang Tunggal	112° 50' 42.359" E	1° 59' 34.576" S	0.86	0.86	0	L	2021
325	Misdiyono 3	Karang Tunggal	112° 50' 10.502" E	1° 59' 23.829" S	1.73	1.73	35.62	NL	2021
326	Misni 1	Karang Tunggal	112° 51' 13.582" E	2° 0' 32.653" S	1	1	26.66	NL	2021
327	Misni 2	Karang Tunggal	112° 50' 36.970" E	2° 0' 23.715" S	1	1	24.72	NL	2021
328	Misni 3	Karang Tunggal	112° 50' 43.400" E	2° 0' 22.751" S	0.75	0.75	16.74	NL	2021
329	Misni 4	Karang Tunggal	112° 50' 34.711" E	2° 0' 30.632" S	0.91	0.91	18.86	NL	2021
330	Misni 5	Karang Tunggal	112° 50' 44.362" E	2° 0' 29.198" S	1.03	1.03	26.77	NL	2021
331	Misni 6	Karang Tunggal	112° 50' 45.368" E	2° 0' 41.372" S	1	1	21.60	NL	2021
332	Misni 7	Karang Tunggal	112° 52' 7.265" E	1° 59' 13.202" S	1	1	21.60	NL	2021
333	Misni 8	Karang Tunggal	112° 52' 20.645" E	1° 59' 13.253" S	1	1	24.72	NL	2021
334	Misron 1	Karang Tunggal	112° 51' 15.467" E	2° 0' 19.063" S	0.25	0.25	5.10	NL	2021
335	Misron 2	Karang Tunggal	112° 51' 15.563" E	2° 0' 18.240" S	0.25	0.25	5.10	NL	2021
336	Moch. Sururudin 1	Karang Tunggal	112° 51' 15.234" E	2° 0' 45.989" S	0.75	0.75	16.38	NL	2021
337	Moch. Sururudin 2	Karang Tunggal	112° 51' 44.319" E	2° 0' 52.629" S	2	2	44.64	NL	2021
338	Moch. Sururudin 3	Karang Tunggal	112° 51' 32.273" E	2° 0' 31.554" S	1.98	1.98	44.66	NL	2021
339	Moch. Sururudin 4	Karang Tunggal	112° 50' 59.314" E	2° 0' 40.761" S	1.25	1.25	30.60	NL	2021
340	Moch. Sururudin 5	Karang Tunggal	112° 50' 23.691" E	2° 0' 49.566" S	1	1	21.84	NL	2021
341	Moch. Sururudin 6	Karang Tunggal	112° 50' 35.014" E	1° 59' 10.686" S	0.75	0.75	24.72	NL	2021
342	Moch. Sururudin 7	Karang Tunggal	112° 51' 56.867" E	2° 0' 25.351" S	1	1	24.48	NL	2021
343	Moch. Sururudin 8	Karang Tunggal	112° 51' 56.774" E	2° 0' 22.157" S	0.75	0.75	17.46	NL	2021
344	Moch. Sururudin 9	Karang Tunggal	112° 50' 37.631" E	1° 59' 8.174" S	0.75	0.75	16.74	NL	2021
345	Moch. Sururudin 10	Karang Tunggal	112° 51' 18.529" E	2° 0' 13.124" S	0.25	0.25	6.24	NL	2021
346	Mochamad Faozi 1	Karang Tunggal	112° 51' 18.844" E	2° 0' 43.133" S	0.25	0.25	5.10	NL	2021



Public

347	Mochamad Faozi 2	Karang Tunggal	112° 51' 11.175" E	2° 0' 25.475" S	1	1	26.16	NL	2021
348	Muchamad Afandi 1	Karang Tunggal	112° 51' 19.222" E	2° 0' 39.899" S	1	1	15.26	NL	2021
349	Muchamad Afandi 2	Karang Tunggal	112° 50' 20.500" E	2° 0' 50.046" S	0.75	0.75	17.82	NL	2021
350	Muchamad Afandi 3	Karang Tunggal	112° 51' 16.886" E	2° 0' 12.930" S	0.97	0.97	25.12	NL	2021
351	Muchamad Afandi 4	Karang Tunggal	112° 51' 19.365" E	2° 0' 13.222" S	0.79	0.79	20.77	NL	2021
352	Muchamad Afandi 5	Karang Tunggal	112° 52' 3.913" E	1° 58' 57.268" S	0.78	0.78	18.06	NL	2021
353	Muchamad Afandi 6	Karang Tunggal	112° 52' 0.931" E	1° 58' 57.300" S	0.25	0.25	6.54	NL	2021
354	Muchamad Afandi 7	Karang Tunggal	112° 52' 1.654" E	1° 58' 53.960" S	0.25	0.25	6.06	NL	2021
355	Mudiwiyono (Jumadi) 1	Karang Tunggal	112° 50' 33.270" E	2° 0' 20.972" S	1	1	30.96	NL	2021
356	Mudiwiyono (Jumadi) 2	Karang Tunggal	112° 50' 12.124" E	2° 0' 26.615" S	1	1	24.96	NL	2021
357	Mudiwiyono (Jumadi) 3	Karang Tunggal	112° 50' 17.417" E	2° 0' 29.120" S	0.75	0.75	14.40	L	2021
358	Mudiwiyono (Jumadi) 4	Karang Tunggal	112° 50' 7.075" E	2° 0' 25.724" S	0.75	0.75	15.84	L	2021
359	Mudiwiyono (Jumadi) 5	Karang Tunggal	112° 50' 49.611" E	2° 0' 18.106" S	0.75	0.75	15.30	L	2021
360	Mugiyono	Karang Tunggal	112° 51' 48.162" E	1° 59' 11.638" S	0.75	0.75	15.66	NL	2021
361	Muhajirin 1	Karang Tunggal	112° 51' 24.909" E	1° 59' 48.925" S	1	1	19.68	NL	2021
362	Muhajirin 2	Karang Tunggal	112° 50' 18.616" E	2° 0' 37.162" S	0.75	0.75	15.12	L	2021
363	Muhajirin 3	Karang Tunggal	112° 50' 29.099" E	2° 0' 42.151" S	0.75	0.75	16.20	L	2021
364	Muhajirin 4	Karang Tunggal	112° 50' 14.284" E	1° 59' 20.906" S	0.75	0.75	14.76	NL	2021
365	Muhajirin 5	Karang Tunggal	112° 50' 15.551" E	1° 59' 19.906" S	0.75	0.75	15.48	NL	2021
366	Muhammad Choirul Anas 1	Karang Tunggal	112° 51' 45.375" E	1° 59' 37.763" S	1	1	21.36	NL	2021
367	Muhammad Choirul Anas 2	Karang Tunggal	112° 51' 24.042" E	2° 0' 27.384" S	1	1	21.84	NL	2021
368	Muhammad Choirul Anas 3	Karang Tunggal	112° 51' 23.675" E	2° 0' 30.549" S	1	1	24.48	NL	2021
369	Muhammad Choirul Anas 4	Karang Tunggal	112° 51' 8.123" E	2° 0' 51.644" S	1	1	19.92	NL	2021
370	Muhammad Choirul Anas 5	Karang Tunggal	112° 51' 4.225" E	2° 0' 54.387" S	0.25	0.25	3.84	NL	2021
371	Muhammad Choirul Anas 6	Karang Tunggal	112° 51' 3.823" E	2° 0' 24.899" S	1	1	23.52	NL	2021
372	Muin Sihaloho 1	Karang Tunggal	112° 51' 48.539" E	2° 0' 19.604" S	0.75	0.75	19.08	NL	2021

Public

373	Muin Sihaloho 2	Karang Tunggal	112° 51' 49.692" E	2° 0' 1.937" S	0.75	0.75	16.20	NL	2021
374	Muin Sihaloho 3	Karang Tunggal	112° 51' 23.299" E	2° 0' 33.787" S	1	1	25.92	NL	2021
375	Muin Sihaloho 4	Karang Tunggal	112° 51' 37.002" E	2° 0' 32.109" S	0.75	0.75	18.18	NL	2021
376	Muin Sihaloho 5	Karang Tunggal	112° 51' 16.202" E	2° 0' 16.302" S	0.25	0.25	6.24	NL	2021
377	Muin Sihaloho 6	Karang Tunggal	112° 51' 4.617" E	2° 0' 51.179" S	1	1	23.28	NL	2021
378	Muin Sihaloho 7	Karang Tunggal	112° 50' 58.920" E	2° 0' 43.992" S	1	1	24.24	NL	2021
379	Muin Sihaloho 8	Karang Tunggal	112° 51' 7.030" E	2° 0' 31.426" S	0.26	0.26	5.11	NL	2021
380	Muin Sihaloho 9	Karang Tunggal	112° 50' 33.751" E	2° 0' 24.198" S	1	1	24.24	NL	2021
381	Muin Sihaloho 10	Karang Tunggal	112° 50' 15.933" E	1° 59' 26.928" S	1	1	25.45	NL	2021
382	Muin Sihaloho 11	Karang Tunggal	112° 50' 40.030" E	1° 59' 51.582" S	1	1	8.29	NL	2021
383	Muin Sihaloho 12	Karang Tunggal	112° 50' 26.943" E	1° 59' 36.857" S	1	1	23.28	NL	2021
384	Mujiyo 1	Kereng Bengkirai	112° 51' 4.804" E	2° 0' 21.119" S	0.23	0.23	5.18	NL	2021
385	Mujiyo 2	Kereng Bengkirai	112° 51' 7.165" E	2° 0' 5.901" S	0.21	0.21	5.62	NL	2021
386	Mujiyo 3	Kereng Bengkirai	112° 51' 5.565" E	2° 0' 5.713" S	0.2	0.2	4.37	NL	2021
387	Munajat 1	Karang Tunggal	112° 51' 41.494" E	2° 0' 12.277" S	0.75	0.75	15.48	NL	2021
388	Munajat 2	Karang Tunggal	112° 51' 39.992" E	2° 0' 15.143" S	0.75	0.75	18.54	NL	2021
389	Munajat 3	Karang Tunggal	112° 51' 43.678" E	2° 0' 13.414" S	0.75	0.75	16.38	NL	2021
390	Munajat 4	Karang Tunggal	112° 51' 28.893" E	2° 0' 2.062" S	1	1	25.68	NL	2021
391	Munajat 5	Karang Tunggal	112° 51' 39.320" E	2° 0' 11.146" S	0.75	0.75	15.12	NL	2021
392	Munajat 6	Karang Tunggal	112° 51' 38.670" E	2° 0' 38.896" S	0.75	0.75	0	NL	2021
393	Murdi 1	Karang Tunggal	112° 51' 41.393" E	2° 0' 35.902" S	0.7	0.7	9.92	NL	2021
394	Murdi 2	Karang Tunggal	112° 50' 12.364" E	2° 0' 28.231" S	0.75	0.75	16.81	NL	2021
395	Murdi 3	Karang Tunggal	112° 50' 35.702" E	2° 0' 42.815" S	0.75	0.75	0	L	2021
396	Murdi 4	Karang Tunggal	112° 50' 31.627" E	2° 0' 48.376" S	0.75	0.75	17.64	NL	2021
397	Murdi 5	Karang Tunggal	112° 50' 41.069" E	1° 58' 59.705" S	0.63	0.63	8.94	NL	2021

Public

398	Murdi 6	Karang Tunggal	112° 50' 26.807" E	1° 59' 1.454" S	0.75	0.75	16.20	L	2021
399	Musiran 1	Karang Tunggal	112° 51' 23.071" E	2° 0' 6.276" S	1	1	24.24	NL	2021
400	Musiran 2	Karang Tunggal	112° 51' 11.440" E	2° 0' 7.451" S	1	1	25.44	NL	2021
401	Mustofa 1	Karang Tunggal	112° 51' 31.053" E	1° 59' 30.217" S	0.8175	0.8175	18.08	NL	2021
402	Mustofa 2	Karang Tunggal	112° 51' 51.615" E	1° 59' 37.433" S	0.75	0.75	18.18	NL	2021
403	Mustofa 3	Karang Tunggal	112° 51' 49.448" E	1° 59' 36.303" S	0.75	0.75	16.20	NL	2021
404	Mustofa 4	Karang Tunggal	112° 51' 46.205" E	2° 0' 36.464" S	1	1	24.24	NL	2021
405	Mustofa 5	Karang Tunggal	112° 51' 43.771" E	2° 0' 36.179" S	0.75	0.75	18.40	NL	2021
406	Mustofa 6	Karang Tunggal	112° 51' 41.014" E	2° 0' 39.169" S	0.75	0.75	19.70	NL	2021
407	Mustofa 7	Karang Tunggal	112° 51' 29.800" E	2° 0' 31.264" S	0.75	0.75	16.20	NL	2021
408	Mustofa 8	Karang Tunggal	112° 51' 32.642" E	2° 0' 28.389" S	0.75	0.75	18.36	NL	2021
409	Mustofa 9	Karang Tunggal	112° 50' 53.212" E	2° 0' 36.742" S	0.75	0.75	18.18	NL	2021
410	Mustofa 10	Karang Tunggal	112° 50' 52.817" E	2° 0' 39.973" S	1	1	24.24	NL	2021
411	Mustofa 11	Karang Tunggal	112° 51' 34.102" E	2° 0' 25.823" S	1	1	23.76	NL	2021
412	Mustofa 12	Karang Tunggal	112° 51' 31.708" E	2° 0' 24.375" S	0.46	0.46	12.50	NL	2021
413	Mustofa 13	Karang Tunggal	112° 50' 52.460" E	1° 59' 29.745" S	0.85	0.85	18.30	NL	2021
414	Mutianah 1	Karang Tunggal	112° 51' 29.109" E	1° 59' 54.817" S	1	1	23.76	NL	2021
415	Mutianah 2	Karang Tunggal	112° 51' 26.259" E	1° 59' 53.315" S	1	1	19.48	NL	2021
416	Mutianah 3	Karang Tunggal	112° 51' 30.626" E	1° 59' 51.937" S	1	1	26.40	NL	2021
417	Mutianah 4	Karang Tunggal	112° 51' 8.658" E	2° 0' 24.739" S	0.25	0.25	5.44	NL	2021
418	Nana Supriana	Karang Tunggal	112° 51' 12.285" E	1° 59' 17.139" S	0.94	0.94	23.13	NL	2021
419	Nanik Sulistyowati	Karang Tunggal	112° 51' 12.128" E	1° 59' 58.055" S	0.17	0.17	4.29	NL	2021
420	Ngadiman 1	Karang Tunggal	112° 51' 39.377" E	1° 59' 49.146" S	1	1	22.00	NL	2021
421	Ngadiman 2	Karang Tunggal	112° 51' 45.845" E	2° 0' 14.541" S	0.75	0.75	18.32	NL	2021

Public

422	Ngadiman 3	Karang Tunggal	112° 50' 50.931" E	2° 0' 2.213" S	0.25	0.25	4.91	NL	2021
423	Ngadiran	Karang Tunggal	112° 50' 35.931" E	1° 58' 58.967" S	2.078	2.078	39.89	NL	2021
424	Ngadirun 1	Karang Tunggal	112° 50' 25.649" E	1° 59' 11.879" S	0.75	0.75	18.90	NL	2021
425	Ngadirun 2	Karang Tunggal	112° 50' 28.174" E	1° 59' 9.872" S	0.75	0.75	15.12	NL	2021
426	Ngadirun 3	Karang Tunggal	112° 50' 26.912" E	1° 59' 10.876" S	0.75	0.75	15.68	NL	2021
427	Ngadirun 4	Karang Tunggal	112° 50' 31.244" E	1° 59' 13.744" S	0.75	0.75	15.84	NL	2021
428	Ngadirun 5	Karang Tunggal	112° 50' 23.375" E	1° 59' 5.396" S	1.026	1.026	21.91	NL	2021
429	Ngadiyo 1	Karang Tunggal	112° 51' 43.877" E	1° 59' 40.605" S	1	1	20.88	NL	2021
430	Ngadiyo 2	Karang Tunggal	112° 51' 52.601" E	1° 59' 19.708" S	1	1	19.44	NL	2021
431	Ngatijan 1	Karang Tunggal	112° 50' 58.169" E	1° 59' 7.250" S	1.25	1.25	27.78	NL	2021
432	Ngatijan 2	Karang Tunggal	112° 50' 54.530" E	1° 58' 58.926" S	0.96	0.96	22.95	NL	2021
433	Ngatino	Karang Tunggal	112° 50' 27.661" E	2° 0' 32.502" S	0.75	0.75	18.18	L	2021
434	Ngatiran 1	Karang Tunggal	112° 51' 44.958" E	1° 59' 44.850" S	0.75	0.75	19.62	NL	2021
435	Ngatiran 2	Karang Tunggal	112° 51' 50.910" E	2° 0' 9.918" S	0.75	0.75	0	NL	2021
436	Ngatiran 3	Karang Tunggal	112° 51' 26.444" E	1° 59' 46.016" S	1	1	25.2	NL	2021
437	Ngatiran 4	Karang Tunggal	112° 51' 24.573" E	2° 0' 3.426" S	1	1	24.00	NL	2021
438	Ngatiran 5	Karang Tunggal	112° 51' 9.454" E	2° 0' 17.974" S	1	1	25.44	NL	2021
439	Ngatiran 6	Karang Tunggal	112° 51' 19.750" E	1° 59' 27.952" S	0.25	0.25	4.22	NL	2021
440	Ngatiran 7	Karang Tunggal	112° 50' 47.577" E	2° 0' 8.647" S	1	1	25.15	NL	2021
441	Ngatiran 8	Karang Tunggal	112° 52' 24.087" E	1° 59' 9.851" S	0.25	0.25	5.10	NL	2021
442	Nuri Istanto 1	Karang Tunggal	112° 51' 12.446" E	2° 0' 42.386" S	1	1	23.28	NL	2021
443	Nuri Istanto 2	Karang Tunggal	112° 51' 45.824" E	2° 0' 39.731" S	0.75	0.75	17.46	NL	2021
444	Nuri Istanto 3	Karang Tunggal	112° 50' 5.228" E	1° 59' 39.619" S	0.75	0.75	17.46	NL	2021
445	Nuri Istanto 4	Karang Tunggal	112° 50' 17.353" E	1° 59' 24.770" S	0.75	0.75	0	NL	2021

Public

446	Nuri Istanto 5	Karang Tunggal	112° 50' 39.535" E	1° 59' 31.952" S	0.25	0.25	6.18	NL	2021
447	Nuri Istanto 6	Karang Tunggal	112° 50' 21.744" E	1° 59' 53.123" S	1.62	1.62	27.90	NL	2021
448	Nuri Istanto 7	Karang Tunggal	112° 51' 4.194" E	2° 0' 59.585" S	1	1	22.89	NL	2021
449	Nuri Istanto 8	Karang Tunggal	112° 50' 19.687" E	1° 59' 7.579" S	1.83	1.83	28.03	L	2021
450	Nurkholis 1	Karang Tunggal	112° 51' 28.747" E	2° 0' 17.765" S	0.24	0.24	4.75	NL	2021
451	Nurkholis 2	Karang Tunggal	112° 51' 9.082" E	2° 0' 21.198" S	0.24	0.24	6.21	NL	2021
452	Nurkholis 3	Karang Tunggal	112° 51' 12.454" E	2° 0' 21.598" S	1.03	1.03	24.22	NL	2021
453	Nurkholis 4	Karang Tunggal	112° 50' 58.138" E	2° 0' 50.387" S	1	1	24.72	NL	2021
454	Nurkholis 5	Karang Tunggal	112° 51' 11.338" E	2° 0' 12.288" S	1	1	23.28	L	2021
455	Nurkholis 6	Karang Tunggal	112° 52' 19.879" E	1° 58' 58.131" S	1.03	1.03	21.50	NL	2021
456	Nurkholis 7	Karang Tunggal	112° 52' 23.211" E	1° 59' 0.832" S	0.95	0.95	19.40	NL	2021
457	Nurkholis 8	Karang Tunggal	112° 52' 2.036" E	1° 59' 20.308" S	1.45	1.45	34.35	NL	2021
458	Nurkholis 9	Karang Tunggal	112° 52' 14.468" E	1° 59' 26.733" S	2.07	2.07	44.10	NL	2021
459	Nurkholis 10	Karang Tunggal	112° 51' 55.405" E	1° 59' 18.203" S	0.25	0.25	5.28	NL	2021
460	Nurkholis 11	Karang Tunggal	112° 52' 8.985" E	1° 59' 26.727" S	0.25	0.25	6.12	NL	2021
461	Nuryanti	Karang Tunggal	112° 51' 4.449" E	2° 0' 0.486" S	0.25	0.25	3.63	NL	2021
462	Oni Hermawan 1	Karang Tunggal	112° 51' 40.807" E	2° 0' 8.308" S	0.75	0.75	0	L	2021
463	Oni Hermawan 2	Karang Tunggal	112° 51' 39.821" E	1° 59' 27.575" S	1	1	19.92	NL	2021
464	Paimun 1	Karang Tunggal	112° 50' 35.192" E	2° 0' 33.863" S	0.87	0.87	18.88	L	2021
465	Paimun 2	Karang Tunggal	112° 50' 13.561" E	2° 0' 36.256" S	0.75	0.75	0	L	2021
466	Paimun 3	Karang Tunggal	112° 50' 36.030" E	1° 59' 22.371" S	1	1	22.56	NL	2021
467	Paimun 4	Karang Tunggal	112° 51' 35.252" E	2° 0' 24.292" S	0.75	0.75	18.36	NL	2021
468	Paimun 5	Karang Tunggal	112° 52' 18.103" E	1° 57' 44.651" S	0.75	0.75	17.46	NL	2021
469	Paimun 6	Karang Tunggal	112° 52' 18.073" E	1° 57' 45.480" S	1	1	25.50	NL	2021
470	Paliyo	Karang Tunggal	112° 51' 13.201" E	2° 0' 35.920" S	1	1	20.40	NL	2021
471	Pamuji 1	Karang Tunggal	112° 51' 49.326" E	1° 58' 52.162" S	1	1	26.40	NL	2021

Public

472	Pamuji 2	Karang Tunggal	112° 51' 13.910" E	1° 59' 32.297" S	1	1	24.96	NL	2021
473	Pamuji 3	Karang Tunggal	112° 51' 4.195" E	1° 59' 31.694" S	1	1	25.87	NL	2021
474	Pamuji 4	Karang Tunggal	112° 50' 18.219" E	2° 0' 9.549" S	1	1	0	L	2021
475	Pamuji 5	Karang Tunggal	112° 51' 7.000" E	1° 59' 35.452" S	0.25	0.25	5.16	NL	2021
476	Pamuji 6	Karang Tunggal	112° 51' 1.534" E	1° 59' 40.419" S	0.25	0.25	5.46	NL	2021
477	Parti 1	Karang Tunggal	112° 50' 44.844" E	2° 0' 32.424" S	1	1	23.04	NL	2021
478	Parti 2	Karang Tunggal	112° 50' 38.198" E	2° 0' 37.526" S	0.75	0.75	17.64	NL	2021
479	Parti 3	Karang Tunggal	112° 50' 36.584" E	2° 0' 37.764" S	0.75	0.75	19.08	NL	2021
480	Poniyem 1	Karang Tunggal	112° 51' 30.027" E	1° 59' 4.432" S	1	1	21.12	NL	2021
481	Poniyem 2	Karang Tunggal	112° 51' 6.972" E	2° 0' 7.514" S	0.25	0.25	5.13	NL	2021
482	Priyo Utomo 1	Karang Tunggal	112° 51' 32.159" E	1° 59' 49.027" S	1	1	19.44	NL	2021
483	Priyo Utomo 2	Karang Tunggal	112° 51' 45.645" E	1° 59' 48.829" S	0.75	0.75	19.26	NL	2021
484	Priyo Utomo 3	Karang Tunggal	112° 51' 58.840" E	1° 59' 20.095" S	1.22	1.22	28.13	NL	2021
485	Puguh 1	Karang Tunggal	112° 51' 31.928" E	1° 59' 56.302" S	1	1	21.12	NL	2021
486	Puguh 2	Karang Tunggal	112° 51' 35.909" E	2° 0' 2.075" S	0.75	0.75	19.08	NL	2021
487	Puguh 3	Karang Tunggal	112° 52' 14.224" E	1° 59' 16.585" S	0.93	0.93	20.74	NL	2021
488	Purwadi 1	Karang Tunggal	112° 51' 27.121" E	1° 59' 28.026" S	1	1	21.12	NL	2021
489	Purwadi 2	Karang Tunggal	112° 51' 24.193" E	1° 59' 33.840" S	1	1	23.28	NL	2021
490	Purwadi 3	Karang Tunggal	112° 51' 25.681" E	1° 59' 23.615" S	1	1	0	NL	2021
491	Purwadi 4	Karang Tunggal	112° 51' 25.657" E	1° 59' 30.933" S	1	1	25.68	NL	2021
492	Purwadi 5	Karang Tunggal	112° 51' 22.698" E	1° 59' 22.109" S	1	1	0	NL	2021
493	Purwadi 6	Karang Tunggal	112° 51' 28.600" E	1° 59' 25.087" S	1	1	24.48	NL	2021
494	Purwana 1	Karang Tunggal	112° 50' 2.323" E	1° 59' 39.836" S	1.63	1.63	38.48	NL	2021
495	Purwana 2	Karang Tunggal	112° 50' 25.355" E	1° 59' 40.119" S	1	1	20.16	NL	2021

Public

496	Purwana 3	Karang Tunggal	112° 50' 44.980" E	1° 59' 15.360" S	1	1	24.96	NL	2021
497	Purwana 4	Karang Tunggal	112° 50' 21.996" E	1° 59' 34.560" S	1	1	0	L	2021
498	Rahmat 1	Karang Tunggal	112° 51' 49.798" E	1° 59' 5.235" S	1	1	20.16	NL	2021
499	Rahmat 2	Karang Tunggal	112° 51' 54.230" E	1° 58' 52.604" S	1	1	20.16	NL	2021
500	Rahmat 3	Karang Tunggal	112° 51' 5.810" E	1° 59' 33.306" S	0.25	0.25	5.04	NL	2021
501	Rahmat 4	Karang Tunggal	112° 51' 10.724" E	1° 58' 52.730" S	1	1	18.76	NL	2021
502	Ramlan 1	Karang Tunggal	112° 51' 37.858" E	1° 59' 52.029" S	1	1	22.24	NL	2021
503	Ramlan 2	Karang Tunggal	112° 51' 56.298" E	1° 59' 22.819" S	1.68	1.68	36.62	NL	2021
504	Riyan Rivaldi 1	Karang Tunggal	112° 51' 36.594" E	2° 0' 6.105" S	0.75	0.75	15.48	NL	2021
505	Riyan Rivaldi 2	Karang Tunggal	112° 52' 3.192" E	1° 59' 36.168" S	0.75	0.75	15.12	NL	2021
506	Riyan Rivaldi 3	Karang Tunggal	112° 51' 49.399" E	2° 0' 12.800" S	0.75	0.75	15.50	NL	2021
507	Riyanto 1	Karang Tunggal	112° 52' 20.756" E	1° 59' 17.325" S	1.44	1.44	28.03	NL	2021
508	Riyanto 2	Karang Tunggal	112° 52' 14.530" E	1° 59' 41.266" S	0.94	0.94	25.15	L	2021
509	Rubinem	Karang Tunggal	112° 50' 46.995" E	2° 0' 30.451" S	1	1	22.56	NL	2021
510	Rusminah 1	Karang Tunggal	112° 51' 47.243" E	1° 59' 20.380" S	1	1	9.72	NL	2021
511	Rusminah 2	Karang Tunggal	112° 51' 56.866" E	1° 58' 59.373" S	1	1	21.60	NL	2021
512	Rusminah 3	Karang Tunggal	112° 51' 18.381" E	1° 59' 45.381" S	1	1	25.44	NL	2021
513	Sahid 1	Karang Tunggal	112° 51' 55.245" E	1° 58' 59.226" S	1	1	23.28	NL	2021
514	Sahid 2	Karang Tunggal	112° 50' 59.764" E	1° 59' 30.400" S	1	1	19.35	NL	2021
515	Sanimin 1	Karang Tunggal	112° 51' 20.222" E	2° 0' 4.774" S	1	1	25.20	NL	2021
516	Sanimin 2	Karang Tunggal	112° 51' 15.092" E	2° 0' 22.299" S	0.25	0.25	5.52	NL	2021
517	Santosa 1	Karang Tunggal	112° 50' 19.813" E	2° 0' 45.188" S	0.75	0.75	17.10	NL	2021
518	Santosa 2	Karang Tunggal	112° 50' 38.137" E	2° 0' 14.171" S	0.25	0.25	2.32	NL	2021
519	Santoso 1	Karang Tunggal	112° 50' 53.606" E	2° 0' 33.511" S	0.25	0.25	5.10	L	2021



Public

520	Santoso 2	Karang Tunggal	112° 50' 38.584" E	2° 0' 0.465" S	1	1	20.88	NL	2021
521	Saptono	Karang Tunggal	112° 50' 36.888" E	2° 0' 49.380" S	0.34	0.34	7.54	NL	2021
522	Sariyah 1	Karang Tunggal	112° 51' 42.175" E	2° 0' 16.282" S	0.75	0.75	18.18	NL	2021
523	Sariyah 2	Karang Tunggal	112° 51' 34.179" E	2° 0' 15.766" S	0.75	0.75	14.94	NL	2021
524	Sariyem 1	Karang Tunggal	112° 51' 21.823" E	2° 0' 20.192" S	1	1	25.20	NL	2021
525	Sariyem 2	Karang Tunggal	112° 51' 26.921" E	2° 0' 30.927" S	1	1	22.08	NL	2021
526	Sariyem 3	Karang Tunggal	112° 51' 25.134" E	2° 0' 20.578" S	1	1	23.28	NL	2021
527	Sariyem 4	Karang Tunggal	112° 51' 27.288" E	2° 0' 27.762" S	0.25	0.25	6.23	NL	2021
528	Sariyem 5	Karang Tunggal	112° 50' 12.959" E	2° 0' 15.443" S	1	1	20.64	NL	2021
529	Sariyem 6	Karang Tunggal	112° 50' 41.061" E	2° 0' 10.431" S	1	1	17.46	NL	2021
530	Sariyono 1	Karang Tunggal	112° 52' 14.022" E	1° 59' 13.336" S	1.8	1.8	43.15	NL	2021
531	Sariyono 2	Karang Tunggal	112° 50' 51.142" E	1° 59' 12.010" S	1.05	1.05	26.71	NL	2021
532	Sarno 1	Karang Tunggal	112° 51' 53.707" E	1° 59' 38.526" S	1	1	20.40	NL	2021
533	Sarno 2	Karang Tunggal	112° 51' 34.808" E	1° 59' 57.819" S	1	1	0	L	2021
534	Sarno 3	Karang Tunggal	112° 51' 42.670" E	1° 59' 29.076" S	0.93	0.93	24.57	NL	2021
535	Sarno 4	Karang Tunggal	112° 51' 35.164" E	1° 59' 43.324" S	0.75	0.75	18.90	NL	2021
536	Sarno 5	Karang Tunggal	112° 51' 17.346" E	2° 0' 55.970" S	1	1	23.04	NL	2021
537	Sarno 6	Karang Tunggal	112° 52' 1.042" E	1° 59' 3.522" S	1	1	21.84	NL	2021
538	Segianur 1	Tawan Jaya	112° 52' 4.856" E	2° 0' 13.581" S	1.99	1.99	0	L	2021
539	Segianur 2	Tawan Jaya	112° 52' 2.672" E	1° 59' 59.796" S	1.87	1.87	44.71	NL	2021
540	Segianur 3	Tawan Jaya	112° 52' 6.844" E	1° 59' 58.193" S	2.29	2.29	46.06	NL	2021
541	Sigit Septiadi 1	Karang Tunggal	112° 51' 40.637" E	2° 0' 42.403" S	0.75	0.75	0	L	2021
542	Sigit Septiadi 2	Karang Tunggal	112° 51' 2.968" E	2° 0' 37.929" S	1	1	0	L	2021
543	Sigit Septiadi 3	Karang Tunggal	112° 50' 46.758" E	2° 0' 37.077" S	1.47	1.47	0	L	2021

Public

544	Sigit Septiadi 4	Karang Tunggal	112° 50' 41.951" E	2° 0' 37.789" S	1.25	1.25	29.72	NL	2021
545	Sigit Septiadi 5	Karang Tunggal	112° 52' 10.415" E	1° 59' 19.865" S	0.75	0.75	16.20	NL	2021
546	Sigit Septiadi 6	Karang Tunggal	112° 52' 14.433" E	1° 59' 23.133" S	0.75	0.75	18.36	NL	2021
547	Sinto	Karang Tunggal	112° 50' 36.516" E	1° 59' 28.153" S	0.75	0.75	0	L	2021
548	Sirin 1	Karang Tunggal	112° 50' 30.071" E	2° 0' 21.450" S	1	1	25.44	L	2021
549	Sirin 2	Karang Tunggal	112° 50' 39.825" E	2° 0' 37.282" S	0.75	0.75	16.23	NL	2021
550	Sisnadi 1	Karang Tunggal	112° 52' 6.537" E	1° 59' 45.225" S	0.75	0.75	18.18	L	2021
551	Sisnadi 2	Karang Tunggal	112° 51' 46.876" E	1° 59' 56.735" S	0.75	0.75	15.12	NL	2021
552	Sisnadi 3	Karang Tunggal	112° 51' 35.103" E	2° 0' 8.952" S	0.75	0.75	18.72	NL	2021
553	Sisnadi 4	Karang Tunggal	112° 51' 37.185" E	2° 0' 10.035" S	0.75	0.75	17.82	NL	2021
554	Sisnadi 5	Karang Tunggal	112° 51' 44.742" E	1° 59' 55.623" S	0.75	0.75	17.28	NL	2021
555	Sisnadi 6	Karang Tunggal	112° 51' 18.358" E	1° 59' 38.150" S	1	1	19.68	NL	2021
556	Sisnadi 7	Karang Tunggal	112° 50' 56.503" E	2° 0' 6.398" S	0.25	0.25	5.76	NL	2021
557	Sisnadi 8	Karang Tunggal	112° 52' 9.357" E	1° 59' 32.055" S	1.6	1.6	34.56	NL	2021
558	Sisnadi 9	Karang Tunggal	112° 51' 24.596" E	1° 59' 15.403" S	0.44	0.44	10.26	NL	2021
559	Siswanto 1	Karang Tunggal	112° 50' 19.993" E	1° 59' 32.039" S	1	1	10.56	NL	2021
560	Siswanto 2	Karang Tunggal	112° 50' 23.979" E	1° 59' 37.055" S	1	1	23.04	NL	2021
561	Siswanto 3	Karang Tunggal	112° 50' 32.015" E	1° 59' 51.495" S	0.25	0.25	3.744	NL	2021
562	Slamet 1	Karang Tunggal	112° 50' 6.835" E	2° 0' 24.105" S	0.75	0.75	15.30	NL	2021
563	Slamet 2	Karang Tunggal	112° 50' 39.731" E	2° 0' 13.930" S	0.25	0.25	5.10	NL	2021
564	Solekan 1	Karang Tunggal	112° 50' 6.113" E	2° 0' 19.253" S	0.75	0.75	18.72	NL	2021
565	Solekan 2	Karang Tunggal	112° 50' 4.443" E	2° 0' 40.919" S	0.75	0.75	17.64	NL	2021
566	Solekan 3	Karang Tunggal	112° 50' 4.681" E	2° 0' 42.500" S	0.75	0.75	19.08	NL	2021
567	Solekan 4	Karang Tunggal	112° 50' 32.510" E	1° 59' 12.740" S	0.75	0.75	17.82	NL	2021

Public

568	Solekan 5	Karang Tunggal	112° 50' 35.548" E	1° 59' 16.569" S	0.75	0.75	17.28	NL	2021
569	Solekan 6	Karang Tunggal	112° 50' 36.044" E	1° 59' 11.999" S	0.75	0.75	0	L	2021
570	Solekan 7	Karang Tunggal	112° 50' 37.070" E	1° 59' 13.282" S	0.75	0.75	0	L	2021
571	Sri Rahayu 1	Karang Tunggal	112° 51' 5.889" E	1° 59' 11.635" S	0.75	0.75	19.26	NL	2021
572	Sri Rahayu 2	Karang Tunggal	112° 51' 41.289" E	1° 58' 51.438" S	1	1	19.44	NL	2021
573	Sri Rahayu 3	Karang Tunggal	112° 50' 57.152" E	1° 59' 42.758" S	0.25	0.25	6.20	NL	2021
574	Sri Rahayu 4	Karang Tunggal	112° 50' 57.539" E	1° 59' 43.468" S	0.23	0.23	4.72	NL	2021
575	Sri Rahayu 5	Karang Tunggal	112° 50' 57.929" E	1° 59' 44.184" S	0.24	0.24	4.66	NL	2021
576	Sri Rahayu 6	Karang Tunggal	112° 51' 7.946" E	1° 59' 44.639" S	0.25	0.25	5.23	NL	2021
577	Subagio1	Karang Tunggal	112° 50' 9.253" E	1° 59' 44.685" S	1	1	25.44	L	2021
578	Subagio2	Karang Tunggal	112° 50' 26.199" E	1° 59' 17.749" S	1	1	23.04	NL	2021
579	Subagio3	Purbalingga Lor	112° 50' 31.759" E	1° 59' 19.580" S	0.75	0.75	17.82	NL	2021
580	Subagio4	Karang Tunggal	112° 50' 17.974" E	2° 0' 1.882" S	0.75	0.75	19.08	NL	2021
581	Sudarman 1	Karang Tunggal	112° 51' 44.490" E	2° 0' 6.561" S	0.75	0.75	17.10	NL	2021
582	Sudarman 2	Karang Tunggal	112° 51' 5.280" E	2° 0' 17.083" S	0.25	0.25	5.18	NL	2021
583	Sudarno Sugondo 1	Penolih	112° 51' 44.904" E	2° 0' 21.389" S	0.75	0.75	16.56	NL	2021
584	Sudarno Sugondo 2	Penolih	112° 51' 35.329" E	1° 59' 36.101" S	1	1	23.04	NL	2021
585	Sudarno Sugondo 3	Penolih	112° 51' 46.418" E	2° 0' 18.497" S	0.75	0.75	15.66	NL	2021
586	Sudarno Sugondo 4	Penolih	112° 51' 36.826" E	1° 59' 33.259" S	1	1	17.28	NL	2021
587	Sudarno Sugondo 5	Penolih	112° 51' 39.381" E	1° 59' 18.881" S	0.61	0.61	15.57	NL	2021
588	Sudarno Sugondo 6	Penolih	112° 52' 6.518" E	1° 59' 22.614" S	1.79	1.79	34.55	L	2021
589	Sugeng 1	Karang Tunggal	112° 51' 3.334" E	1° 59' 5.145" S	0.75	0.75	15.84	NL	2021
590	Sugeng 2	Karang Tunggal	112° 51' 53.517" E	1° 59' 49.329" S	0.75	0.75	14.94	NL	2021
591	Sugeng Supriadi	Karang Tunggal	112° 50' 34.990" E	2° 0' 38.004" S	0.75	0.75	18.72	NL	2021

Public

592	Sugianto 1	Karang Sari	112° 51' 13.105" E	1° 58' 58.283" S	0.75	0.75	17.82	NL	2021
593	Sugianto 2	Karang Sari	112° 51' 33.158" E	1° 59' 4.354" S	1	1	24.24	NL	2021
594	Sugianto 3	Karang Sari	112° 51' 32.538" E	1° 59' 27.397" S	1	1	25.44	NL	2021
595	Sugianto 4	Karang Sari	112° 51' 44.340" E	1° 59' 11.294" S	1	1	23.04	NL	2021
596	Sugiman 1	Karang Tunggal	112° 50' 7.250" E	1° 59' 42.163" S	1	1	21.69	NL	2021
597	Sugiman 2	Karang Tunggal	112° 50' 38.252" E	1° 59' 39.358" S	1	1	23.48	NL	2021
598	Sukaji 1	Karang Tunggal	112° 51' 18.715" E	2° 0' 7.633" S	1	1	22.32	NL	2021
599	Sukaji 2	Karang Tunggal	112° 51' 46.256" E	1° 59' 52.737" S	0.75	0.75	19.08	NL	2021
600	Sukaji 3	Karang Tunggal	112° 52' 7.507" E	1° 59' 3.635" S	0.97	0.97	19.41	NL	2021
601	Sukardi	Mulyodadi	112° 51' 30.411" E	1° 59' 59.182" S	1	1	20.16	NL	2021
602	Sukarman 1	Karang Tunggal	112° 50' 14.324" E	1° 59' 40.656" S	1	1	19.44	NL	2021
603	Sukarman 2	Karang Tunggal	112° 50' 29.738" E	1° 59' 27.375" S	0.75	0.75	16.02	NL	2021
604	Sukarman 3	Karang Tunggal	112° 50' 32.777" E	1° 59' 41.586" S	0.25	0.25	5.16	NL	2021
605	Sukur 1	Karang Tunggal	112° 51' 38.484" E	2° 0' 18.023" S	0.75	0.75	16.92	NL	2021
606	Sukur 2	Karang Tunggal	112° 51' 57.862" E	1° 59' 51.603" S	0.75	0.75	18.00	NL	2021
607	Sukur 3	Karang Tunggal	112° 51' 39.676" E	1° 59' 34.760" S	1	1	19.44	NL	2021
608	Sukur 4	Karang Tunggal	112° 51' 59.931" E	1° 59' 52.686" S	0.75	0.75	14.40	NL	2021
609	Sukur 5	Karang Tunggal	112° 52' 2.051" E	1° 59' 53.795" S	0.75	0.75	15.66	NL	2021
610	Sukur 6	Karang Tunggal	112° 51' 59.372" E	1° 59' 48.719" S	0.75	0.75	17.46	NL	2021
611	Sukur 7	Karang Tunggal	112° 52' 0.574" E	1° 59' 56.615" S	0.75	0.75	15.30	NL	2021
612	Sukur 8	Karang Tunggal	112° 51' 55.698" E	1° 59' 50.471" S	1	1	25.20	NL	2021
613	Sukur 9	Karang Tunggal	112° 51' 45.160" E	2° 0' 10.583" S	1	1	19.20	NL	2021
614	Sukur 10	Karang Tunggal	112° 51' 50.970" E	1° 58' 52.310" S	1	1	21.68	NL	2021
615	Sukur 11	Karang Tunggal	112° 52' 7.447" E	1° 59' 6.858" S	2.57	2.57	59.23	NL	2021

Public

616	Sukur 12	Karang Tunggal	112° 52' 14.151" E	1° 59' 9.696" S	1.84	1.84	41.53	NL	2021
617	Sukur 13	Karang Tunggal	112° 52' 3.304" E	2° 0' 20.104" S	0.99	0.99	21.76	NL	2021
618	Sukur 14	Karang Tunggal	112° 52' 1.684" E	2° 0' 13.702" S	3.48	3.48	79.25	NL	2021
619	Sukur 15	Karang Tunggal	112° 51' 56.544" E	2° 0' 19.754" S	0.75	0.75	17.46	NL	2021
620	Sukur 16	Karang Tunggal	112° 51' 57.470" E	2° 0' 13.299" S	0.75	0.75	14.76	NL	2021
621	Suliyah 1	Karang Tunggal	112° 50' 44.468" E	2° 0' 48.957" S	1.15	1.15	22.37	NL	2021
622	Suliyah 2	Karang Tunggal	112° 50' 43.604" E	2° 0' 45.716" S	0.32	0.32	8.24	NL	2021
623	Sumaidah 1	Karang Tunggal	112° 50' 54.122" E	1° 59' 33.509" S	1	1	21.60	NL	2021
624	Sumaidah 2	Karang Tunggal	112° 50' 50.015" E	1° 59' 32.264" S	1.09	1.09	24.39	NL	2021
625	Sumaidah 3	Karang Tunggal	112° 50' 58.423" E	1° 59' 52.780" S	0.55	0.55	14.03	L	2021
626	Sumaidah 4	Karang Tunggal	112° 50' 54.988" E	1° 59' 29.408" S	1.02	1.02	20.03	NL	2021
627	Sumanto 1	Karang Tunggal	112° 50' 9.466" E	2° 0' 41.781" S	0.75	0.75	18.36	NL	2021
628	Sumanto 2	Karang Tunggal	112° 52' 24.000" E	1° 59' 6.716" S	1.02	1.02	24.16	NL	2021
629	Sumanto 3	Karang Tunggal	112° 50' 59.389" E	2° 0' 16.016" S	0.54	0.54	13.10	NL	2021
630	Sumidi 1	Karang Tunggal	112° 51' 31.709" E	1° 59' 10.877" S	1	1	24.00	NL	2021
631	Sumidi 2	Karang Tunggal	112° 51' 6.618" E	2° 0' 4.447" S	0.25	0.25	5.82	NL	2021
632	Sumidi 3	Karang Tunggal	112° 51' 33.659" E	1° 59' 9.287" S	0.42	0.42	8.76	NL	2021
633	Sumini 1	Karang Tunggal	112° 51' 18.562" E	1° 58' 58.161" S	1	1	21.14	NL	2021
634	Sumini 2	Karang Tunggal	112° 51' 8.223" E	1° 59' 5.012" S	1	1	20.88	NL	2021
635	Sumini 3	Karang Tunggal	112° 51' 23.427" E	1° 58' 58.056" S	0.75	0.75	15.48	NL	2021
636	Sumini 4	Karang Tunggal	112° 51' 9.710" E	1° 59' 33.700" S	1	1	19.92	NL	2021
637	Sumiyati 1	Karang Tunggal	112° 51' 43.980" E	1° 59' 33.426" S	0.75	0.75	18.00	NL	2021
638	Sumiyati 2	Karang Tunggal	112° 51' 18.590" E	2° 0' 19.815" S	0.25	0.25	6.54	NL	2021
639	Sumiyati 3	Karang Tunggal	112° 51' 18.213" E	2° 0' 23.048" S	1	1	19.68	NL	2021

Public

640	Sumiyati 4	Karang Tunggal	112° 51' 14.908" E	2° 0' 23.899" S	1	1	25.20	NL	2021
641	Sumiyati 5	Karang Tunggal	112° 51' 14.999" E	2° 0' 23.096" S	1	1	21.60	NL	2021
642	Sumiyati 6	Karang Tunggal	112° 50' 58.529" E	2° 0' 47.190" S	0.25	0.25	5.52	NL	2021
643	Sumiyati 7	Karang Tunggal	112° 51' 51.797" E	1° 59' 11.967" S	0.25	0.25	6.18	NL	2021
644	Sumiyati 8	Karang Tunggal	112° 50' 29.340" E	2° 0' 43.771" S	1	1	24.24	L	2021
645	Sumiyati 9	Karang Tunggal	112° 50' 29.578" E	2° 0' 45.382" S	0.75	0.75	15.30	NL	2021
646	Sumiyati 10	Karang Tunggal	112° 51' 13.745" E	2° 0' 12.564" S	0.23	0.23	4.44	NL	2021
647	Sumiyati 11	Karang Tunggal	112° 51' 4.393" E	1° 59' 36.468" S	0.75	0.75	15.12	NL	2021
648	Sunarta 1	Karang Tunggal	112° 51' 29.896" E	2° 0' 13.520" S	0.75	0.75	14.94	NL	2021
649	Sunarta 2	Karang Tunggal	112° 51' 55.027" E	1° 59' 46.445" S	0.75	0.75	17.82	NL	2021
650	Sunarta 3	Karang Tunggal	112° 51' 31.399" E	2° 0' 10.658" S	0.75	0.75	18.00	NL	2021
651	Sunarti 1	Karang Tunggal	112° 50' 38.914" E	2° 0' 42.335" S	1	1	20.40	NL	2021
652	Sunarti 2	Karang Tunggal	112° 50' 37.299" E	2° 0' 42.574" S	0.75	0.75	15.32	NL	2021
653	Sunarti 3	Karang Tunggal	112° 50' 24.837" E	2° 0' 46.091" S	0.75	0.75	17.10	NL	2021
654	Sunarti 4	Karang Tunggal	112° 50' 21.403" E	1° 59' 39.102" S	0.75	0.75	15.80	NL	2021
655	Sunarti 5	Karang Tunggal	112° 50' 19.888" E	1° 59' 22.759" S	1	1	19.92	NL	2021
656	Sunarti 6	Karang Tunggal	112° 50' 40.277" E	1° 59' 41.883" S	0.75	0.75	19.08	NL	2021
657	Sunarti 7	Karang Tunggal	112° 50' 7.404" E	1° 59' 50.162" S	1	1	25.44	NL	2021
658	Sunarti 8	Karang Tunggal	112° 50' 10.824" E	1° 59' 58.259" S	0.76	0.76	0	NL	2021
659	Supardi 1	Karang Tunggal	112° 51' 33.970" E	1° 59' 31.754" S	1	1	21.36	NL	2021
660	Supardi 2	Karang Tunggal	112° 51' 31.773" E	2° 0' 3.579" S	1	1	23.76	NL	2021
661	Supardi 3	Karang Tunggal	112° 51' 33.445" E	1° 59' 53.422" S	1	1	12.12	NL	2021
662	Supardi 4	Karang Tunggal	112° 51' 17.345" E	2° 0' 3.259" S	1	1	0	L	2021
663	Supardi 5	Karang Tunggal	112° 51' 50.734" E	1° 59' 44.198" S	1	1	23.28	NL	2021

Public

664	Supardi 6	Karang Tunggal	112° 51' 37.983" E	1° 59' 44.809" S	0.75	0.75	0	L	2021
665	Supardi 7	Karang Tunggal	112° 51' 33.290" E	2° 0' 0.699" S	1	1	24.96	NL	2021
666	Supardi 8	Karang Tunggal	112° 51' 0.754" E	2° 0' 13.739" S	1	1	25.44	NL	2021
667	Supardi 9	Karang Tunggal	112° 52' 17.357" E	1° 59' 13.268" S	1	1	26.16	NL	2021
668	Suparjiman 1	Karang Tunggal	112° 50' 8.260" E	1° 59' 33.024" S	0.75	0.75	6.42	NL	2021
669	Suparjiman 2	Karang Tunggal	112° 50' 18.076" E	1° 59' 17.895" S	1	1	22.80	L	2021
670	Suparjiman 3	Karang Tunggal	112° 50' 26.721" E	1° 59' 23.583" S	0.75	0.75	19.80	NL	2021
671	Suparjiman 4	Karang Tunggal	112° 50' 33.014" E	1° 59' 8.177" S	0.75	0.75	17.46	NL	2021
672	Suparjiman 5	Karang Tunggal	112° 50' 32.276" E	1° 58' 57.588" S	1.39	1.39	31.64	NL	2021
673	Suparjiman 6	Karang Tunggal	112° 50' 27.881" E	1° 58' 57.585" S	1.18	1.18	24.05	NL	2021
674	Suparno 1	Karang Tunggal	112° 51' 13.914" E	1° 59' 39.515" S	1	1	18.77	NL	2021
675	Suparno 2	Karang Tunggal	112° 52' 10.662" E	1° 59' 0.513" S	0.92	0.92	19.79	NL	2021
676	Suparno 3	Karang Tunggal	112° 52' 20.645" E	1° 59' 6.667" S	0.91	0.91	20.46	NL	2021
677	Supoyo 1	Karang Tunggal	112° 51' 3.365" E	2° 0' 34.699" S	1	1	23.28	NL	2021
678	Supoyo 2	Karang Tunggal	112° 52' 4.260" E	1° 59' 3.572" S	0.99	0.99	25.50	NL	2021
679	Suprihatin	Karang Tunggal	112° 52' 14.022" E	1° 59' 3.313" S	0.94	0.94	19.79	NL	2021
680	Supriyati 1	Karang Tunggal	112° 50' 11.883" E	2° 0' 25.005" S	0.75	0.75	18.00	NL	2021
681	Supriyati 2	Karang Tunggal	112° 50' 14.518" E	2° 0' 42.666" S	0.75	0.75	19.62	NL	2021
682	Supriyati 3	Karang Tunggal	112° 50' 14.759" E	2° 0' 44.284" S	0.75	0.75	15.84	NL	2021
683	Supriyati 4	Karang Tunggal	112° 50' 11.829" E	2° 0' 19.224" S	1	1	17.64	NL	2021
684	Supriyati 5	Karang Tunggal	112° 50' 12.317" E	2° 0' 22.463" S	1	1	19.78	NL	2021
685	Suratijo 1	Karang Tunggal	112° 51' 46.582" E	2° 0' 33.230" S	0.75	0.75	18.00	NL	2021
686	Suratijo 2	Karang Tunggal	112° 50' 55.280" E	2° 0' 46.797" S	1	1	16.32	L	2021
687	Suratijo 3	Karang Tunggal	112° 50' 44.750" E	2° 0' 13.163" S	0.25	0.25	5.28	NL	2021



Public

688	Suratmi	Barunang Miri	112° 51' 40.118" E	1° 59' 4.357" S	1	1	25.92	NL	2021
689	Suroto 1	Karang Tunggal	112° 50' 3.190" E	1° 59' 37.053" S	1	1	22.08	NL	2021
690	Suroto 2	Karang Tunggal	112° 50' 22.412" E	1° 59' 20.755" S	0.75	0.75	0	L	2021
691	Suryanto 1	Karang Tunggal	112° 52' 5.353" E	1° 59' 37.304" S	0.25	0.25	5.04	NL	2021
692	Suryanto 1	Karang Tunggal	112° 51' 56.165" E	1° 59' 28.762" S	0.75	0.75	16.02	NL	2021
693	Suryanto 2	Karang Tunggal	112° 51' 10.948" E	2° 0' 55.226" S	1	1	9.92	NL	2021
694	Suryanto 3	Karang Tunggal	112° 51' 15.377" E	1° 59' 29.391" S	1	1	21.84	NL	2021
695	Suryanto 4	Karang Tunggal	112° 50' 31.032" E	2° 0' 27.893" S	0.72	0.72	18.39	NL	2021
696	Suryanto 2	Karang Tunggal	112° 51' 16.105" E	2° 0' 12.841" S	0.75	0.75	18.36	NL	2021
697	Suryanto 3	Karang Tunggal	112° 51' 56.471" E	1° 59' 26.172" S	1	1	24.48	NL	2021
698	Sutopo	Karang Tunggal	112° 50' 14.278" E	2° 0' 41.059" S	0.75	0.75	8.25	L	2021
699	Sutrini	Karang Tunggal	112° 51' 57.209" E	1° 59' 47.587" S	0.75	0.75	14.58	NL	2021
700	Sutrisman 1	Karang Tunggal	112° 51' 15.660" E	1° 59' 4.821" S	0.75	0.75	16.38	NL	2021
701	Sutrisman 2	Karang Tunggal	112° 51' 14.458" E	1° 59' 4.846" S	0.75	0.75	18.72	NL	2021
702	Sutrisno 1	Karang Tunggal	112° 51' 29.452" E	1° 59' 40.315" S	1	1	12.48	L	2021
703	Sutrisno 2	Karang Tunggal	112° 51' 26.542" E	1° 59' 38.780" S	1	1	23.28	NL	2021
704	Sutrisno 3	Karang Tunggal	112° 51' 44.514" E	1° 58' 51.729" S	0.75	0.75	11.29	NL	2021
705	Sutrisno 4	Karang Tunggal	112° 50' 55.703" E	1° 59' 36.375" S	1	1	24.96	NL	2021
706	Sutrisno 5	Karang Tunggal	112° 50' 55.793" E	1° 59' 40.047" S	1	1	24.24	NL	2021
707	Sutrisno 6	Karang Tunggal	112° 50' 30.552" E	2° 0' 24.678" S	1	1	25.68	NL	2021
708	Sutrisno 7	Karang Tunggal	112° 50' 28.857" E	2° 0' 40.525" S	1	1	19.68	NL	2021
709	Sutrisno 8	Karang Tunggal	112° 50' 9.750" E	2° 0' 15.881" S	1	1	20.16	NL	2021
710	Sutrisno 9	Karang Tunggal	112° 50' 55.452" E	2° 0' 17.230" S	1	1	25.68	NL	2021
711	Sutrisno 10	Karang Tunggal	112° 50' 44.076" E	1° 59' 3.369" S	1	1	25.92	NL	2021

Public

712	Suwarno 1	Tawan Jaya	112° 51' 54.216" E	1° 59' 53.299" S	0.75	0.75	17.82	NL	2021
713	Suwarno 2	Tawan Jaya	112° 52' 0.388" E	1° 59' 30.980" S	0.75	0.75	6.73	NL	2021
714	Suwarno 3	Tawan Jaya	112° 51' 56.049" E	2° 0' 5.262" S	0.75	0.75	48.20	NL	2021
715	Suwarno 4	Tawan Jaya	112° 52' 1.012" E	1° 59' 35.022" S	0.75	0.75	39.93	NL	2021
716	Suwarno 5	Tawan Jaya	112° 51' 56.980" E	1° 59' 58.323" S	0.75	0.75	23.48	NL	2021
717	Suwarno 6	Tawan Jaya	112° 51' 56.381" E	1° 59' 54.429" S	0.75	0.75	10.01	NL	2021
718	Suwarno 7	Tawan Jaya	112° 51' 42.655" E	1° 59' 54.537" S	0.75	0.75	16.56	NL	2021
719	Suwarno 8	Tawan Jaya	112° 51' 51.228" E	1° 59' 59.002" S	0.75	0.75	19.26	NL	2021
720	Suwarno 9	Tawan Jaya	112° 51' 53.928" E	2° 0' 4.153" S	0.75	0.75	15.85	NL	2021
721	Suwarno 10	Tawan Jaya	112° 52' 0.184" E	1° 59' 41.908" S	0.75	0.75	15.48	NL	2021
722	Suwarno 11	Tawan Jaya	112° 51' 59.103" E	1° 59' 59.428" S	0.75	0.75	14.36	NL	2021
723	Suwarno 12	Tawan Jaya	112° 51' 57.591" E	2° 0' 2.315" S	0.75	0.75	19.75	NL	2021
724	Suwarno 13	Tawan Jaya	112° 51' 52.741" E	1° 59' 56.115" S	0.75	0.75	15.48	NL	2021
725	Suwarno 14	Tawan Jaya	112° 51' 53.394" E	2° 0' 0.130" S	0.75	0.75	17.28	NL	2021
726	Suwarno 15	Tawan Jaya	112° 51' 55.468" E	2° 0' 1.210" S	0.75	0.75	18.85	NL	2021
727	Suwarno 16	Tawan Jaya	112° 51' 51.856" E	2° 0' 3.069" S	0.75	0.75	0	L	2021
728	Suwarno 17	Tawan Jaya	112° 51' 54.907" E	1° 59' 57.243" S	0.75	0.75	18.14	NL	2021
729	Suwarno 18	Tawan Jaya	112° 51' 41.698" E	2° 0' 1.427" S	0.75	0.75	14.97	NL	2021
730	Suwarno 19	Tawan Jaya	112° 51' 59.747" E	1° 59' 17.179" S	0.33	0.33	15.48	NL	2021
731	Suwarno 20	Tawan Jaya	112° 52' 9.904" E	2° 0' 15.118" S	1.95	1.95	17.97	NL	2021
732	Suwarno 21	Tawan Jaya	112° 52' 8.414" E	2° 0' 18.047" S	1.6	1.6	19.20	NL	2021
733	Suwarno 22	Tawan Jaya	112° 52' 14.734" E	2° 0' 17.615" S	1.03	1.03	17.79	NL	2021
734	Suwarno 23	Tawan Jaya	112° 51' 5.981" E	1° 59' 56.600" S	0.39	0.39	18.50	NL	2021
735	Suwarno 1	Purbalingga Lor	112° 51' 20.485" E	1° 59' 50.273" S	1.54	1.54	37.05	L	2021

Public

736	Suwarto 2	Purbalingga Lor	112° 51' 49.045" E	1° 59' 57.864" S	1	1	0	L	2021
737	Suwarto 3	Purbalingga Lor	112° 51' 25.891" E	2° 0' 7.761" S	1.26	1.26	25.96	NL	2021
738	Suwarto 4	Purbalingga Lor	112° 52' 3.833" E	1° 59' 40.206" S	1.77	1.77	38.97	NL	2021
739	Suwarto 5	Purbalingga Lor	112° 51' 49.867" E	1° 59' 51.031" S	0.9	0.9	21.45	NL	2021
740	Suwarto 6	Purbalingga Lor	112° 52' 9.535" E	1° 59' 39.501" S	1.2	1.2	24.39	NL	2021
741	Suwarto 7	Karang Tunggal	112° 51' 41.126" E	1° 59' 57.457" S	1.04	1.04	22.27	NL	2021
742	Suwarto 8	Purbalingga Lor	112° 51' 58.857" E	1° 59' 33.890" S	1	1	21.84	NL	2021
743	Suwarto 9	Purbalingga Lor	112° 51' 22.545" E	2° 0' 40.288" S	0.75	0.75	18.90	NL	2021
744	Suwarto 10	Purbalingga Lor	112° 51' 22.170" E	2° 0' 43.521" S	1	1	22.80	NL	2021
745	Suwarto 11	Purbalingga Lor	112° 51' 25.419" E	2° 0' 43.899" S	0.75	0.75	18.90	NL	2021
746	Suwarto 12	Purbalingga Lor	112° 51' 30.760" E	2° 0' 44.524" S	0.75	0.75	0	NL	2021
747	Suwarto 13	Purbalingga Lor	112° 51' 28.289" E	2° 0' 44.235" S	0.75	0.75	19.26	NL	2021
748	Suwarto 14	Purbalingga Lor	112° 51' 1.782" E	2° 0' 47.588" S	0.75	0.75	19.80	NL	2021
749	Suwarto 15	Purbalingga Lor	112° 51' 49.123" E	1° 59' 17.639" S	0.75	0.75	15.84	NL	2021
750	Suwarto 16	Purbalingga Lor	112° 52' 22.348" E	1° 59' 36.109" S	1	1	10.44	NL	2021
751	Suwarto 17	Purbalingga Lor	112° 52' 1.080" E	1° 59' 22.981" S	1	1	0	L	2021
752	Suwarto 18	Purbalingga Lor	112° 51' 59.730" E	1° 59' 26.268" S	0.75	0.75	0	L	2021
753	Suwarto 19	Purbalingga Lor	112° 51' 57.010" E	2° 0' 33.293" S	0.75	0.75	0	L	2021
754	Suwarto 20	Purbalingga Lor	112° 52' 3.000" E	2° 0' 5.487" S	1	1	23.28	L	2021
755	Suyanto 1	Karang Tunggal	112° 50' 4.922" E	2° 0' 44.096" S	0.75	0.75	9.98	L	2021
756	Suyanto 2	Karang Tunggal	112° 50' 49.206" E	2° 0' 21.381" S	1	1	25.44	NL	2021
757	Suyanto 3	Karang Tunggal	112° 50' 50.021" E	2° 0' 26.169" S	0.81	0.81	16.33	NL	2021
758	Suyatno 1	Karang Tunggal	112° 51' 20.351" E	1° 59' 57.562" S	0.25	0.25	5.52	NL	2021
759	Suyatno 2	Karang Tunggal	112° 51' 17.450" E	1° 59' 56.032" S	0.25	0.25	5.85	NL	2021

Public

760	Suyatno 3	Karang Tunggal	112° 51' 18.968" E	1° 59' 53.152" S	1	1	24.48	NL	2021
761	Suyatno 4	Karang Tunggal	112° 51' 36.498" E	1° 59' 47.629" S	1	1	24.96	NL	2021
762	Suyatno 5	Karang Tunggal	112° 51' 11.042" E	2° 0' 19.805" S	1	1	24.24	NL	2021
763	Suyatno 6	Karang Tunggal	112° 51' 31.499" E	1° 59' 19.331" S	1	1	21.12	NL	2021
764	Suyatno 7	Karang Tunggal	112° 50' 48.157" E	2° 0' 3.802" S	1	1	20.16	NL	2021
765	Suyono 1	Karang Tunggal	112° 50' 23.126" E	1° 59' 13.883" S	0.6	0.6	9.22	NL	2021
766	Suyono 2	Karang Tunggal	112° 50' 41.300" E	1° 59' 43.156" S	1.25	1.25	21.36	L	2021
767	Suyono 3	Karang Tunggal	112° 50' 48.101" E	1° 59' 41.772" S	0.47	0.47	7.44	NL	2021
768	Suyono 4	Karang Tunggal	112° 50' 42.910" E	1° 59' 46.534" S	0.75	0.75	15.46	NL	2021
769	Suyono 5	Karang Tunggal	112° 50' 44.103" E	1° 59' 50.130" S	1	1	24.24	NL	2021
770	Suyono 6	Karang Tunggal	112° 50' 49.879" E	1° 59' 45.192" S	0.76	0.76	8.40	L	2021
771	Suyono 7	Karang Tunggal	112° 50' 48.748" E	1° 59' 43.107" S	1.29	1.29	22.80	NL	2021
772	Tarsini	Karang Tunggal	112° 52' 2.602" E	1° 59' 6.776" S	1	1	24.96	NL	2021
773	Tatang Permana	Pasir Putih	112° 51' 2.615" E	1° 59' 28.829" S	1	1	23.76	L	2021
774	Tri Haryono	Karang Tunggal	112° 51' 39.615" E	2° 0' 0.338" S	0.75	0.75	9.07	NL	2021
775	Tubari 1	Karang Tunggal	112° 51' 7.001" E	1° 59' 5.045" S	0.75	0.75	16.92	NL	2021
776	Tubari 2	Karang Tunggal	112° 51' 48.738" E	1° 58' 58.636" S	1	1	21.60	NL	2021
777	Tubari 3	Karang Tunggal	112° 51' 59.092" E	1° 58' 53.041" S	1	1	25.68	NL	2021
778	Tugiman	Karang Tunggal	112° 51' 15.949" E	1° 59' 58.882" S	1	1	25.92	NL	2021
779	Tugiono	Karang Tunggal	112° 50' 42.319" E	1° 59' 44.437" S	1	1	21.84	NL	2021
780	Tukijan 1	Karang Tunggal	112° 51' 47.134" E	1° 59' 45.988" S	1.03	1.03	23.05	L	2021
781	Tukijan 2	Karang Tunggal	112° 52' 6.924" E	1° 59' 18.728" S	0.75	0.75	16.38	NL	2021
782	Tukimin 1	Karang Tunggal	112° 51' 12.940" E	2° 0' 4.593" S	1	1	20.4	NL	2021
783	Tukimin 2	Karang Tunggal	112° 51' 29.310" E	1° 59' 47.525" S	0.75	0.75	17.28	NL	2021

Public

784	Tukimin 3	Karang Tunggal	112° 51' 44.168" E	1° 59' 51.650" S	1	1	19.68	NL	2021
785	Tukimin 4	Karang Tunggal	112° 50' 56.460" E	2° 0' 37.137" S	3.19	3.19	65.13	NL	2021
786	Tukimin 5	Karang Tunggal	112° 52' 3.348" E	1° 59' 15.276" S	1	1	23.04	NL	2021
787	Tuminem 1	Karang Tunggal	112° 50' 9.667" E	2° 0' 21.204" S	0.35	0.35	8.56	NL	2021
788	Tuminem 2	Karang Tunggal	112° 50' 26.054" E	2° 0' 14.459" S	1	1	19.58	NL	2021
789	Tuminem 3	Karang Tunggal	112° 50' 29.920" E	2° 0' 18.460" S	0.25	0.25	4.51	NL	2021
790	Tutor 1	Karang Tunggal	112° 51' 52.609" E	1° 58' 52.458" S	1	1	20.40	NL	2021
791	Tutor 2	Karang Tunggal	112° 51' 0.359" E	1° 59' 36.594" S	0.25	0.25	5.46	NL	2021
792	Tutor 3	Karang Tunggal	112° 51' 3.761" E	1° 59' 38.671" S	0.25	0.25	4.27	NL	2021
793	Tutor 4	Karang Tunggal	112° 51' 1.144" E	1° 59' 38.032" S	0.25	0.25	6.60	NL	2021
794	Ugai Sugandi 1	Karang Tunggal	112° 51' 26.741" E	1° 59' 4.524" S	1	1	22.08	NL	2021
795	Ugai Sugandi 2	Karang Tunggal	112° 51' 42.978" E	2° 0' 9.443" S	0.75	0.75	9.50	NL	2021
796	Ugai Sugandi 3	Karang Tunggal	112° 51' 45.721" E	1° 59' 23.277" S	1	1	20.64	NL	2021
797	Ugai Sugandi 4	Karang Tunggal	112° 51' 39.903" E	1° 59' 15.808" S	1	1	24.24	NL	2021
798	Ugai Sugandi 5	Karang Tunggal	112° 51' 5.115" E	2° 0' 10.756" S	0.25	0.25	5.04	NL	2021
799	Untung Prayoga	Karang Tunggal	112° 50' 24.176" E	2° 0' 13.147" S	0.25	0.25	2.41	NL	2021
800	Wagimah 1	Karang Tunggal	112° 51' 7.232" E	2° 0' 29.789" S	0.25	0.25	5.70	L	2021
801	Wagimah 2	Karang Tunggal	112° 51' 54.209" E	1° 59' 12.187" S	1	1	22.08	NL	2021
802	Wagimah 3	Karang Tunggal	112° 51' 41.149" E	1° 59' 11.006" S	0.75	0.75	18.36	NL	2021
803	Wagimah 4	Karang Tunggal	112° 51' 11.066" E	1° 59' 30.862" S	1	1	25.68	NL	2021
804	Wagimah 5	Karang Tunggal	112° 51' 12.731" E	1° 59' 45.731" S	0.26	0.26	5.99	NL	2021
805	Wagimah 6	Karang Tunggal	112° 51' 6.422" E	1° 59' 49.701" S	0.27	0.27	3.74	NL	2021
806	Wagimah 7	Karang Tunggal	112° 51' 4.377" E	1° 58' 51.987" S	0.75	0.75	19.26	NL	2021
807	Wagimin	Karang Tunggal	112° 51' 3.098" E	1° 59' 43.271" S	0.25	0.25	4.70	NL	2021

Public

808	Wagiso 1	Hampalit	112° 51' 56.527" E	1° 59' 43.585" S	1	1	4.98	NL	2021
809	Wagiso 2	Hampalit	112° 51' 19.355" E	2° 0' 10.702" S	0.75	0.75	17.46	NL	2021
810	Wahinto 1	Karang Tunggal	112° 50' 39.712" E	2° 0' 20.009" S	1	1	25.68	NL	2021
811	Wahinto 2	Karang Tunggal	112° 50' 36.488" E	2° 0' 20.491" S	1	1	24.24	NL	2021
812	Wajidi 1	Karang Tunggal	112° 51' 43.210" E	1° 59' 58.546" S	0.25	0.25	5.10	NL	2021
813	Wajidi 2	Karang Tunggal	112° 51' 23.449" E	2° 0' 17.145" S	0.75	0.75	8.06	L	2021
814	Wajidi 3	Karang Tunggal	112° 51' 18.283" E	1° 59' 30.858" S	1	1	25.20	NL	2021
815	Wakijo 1	Karang Tunggal	112° 51' 22.074" E	1° 59' 11.163" S	1	1	26.16	NL	2021
816	Wakijo 2	Karang Tunggal	112° 51' 46.672" E	2° 0' 7.702" S	0.75	0.75	19.92	NL	2021
817	Warno Atmojo 1	Karang Tunggal	112° 51' 26.852" E	1° 59' 11.028" S	0.25	0.25	5.90	NL	2021
818	Warno Atmojo 2	Karang Tunggal	112° 51' 32.898" E	2° 0' 7.806" S	1.88	1.88	37.58	NL	2021
819	Warno Atmojo 3	Karang Tunggal	112° 51' 17.125" E	2° 0' 29.785" S	1	1	25.44	NL	2021
820	Warno Atmojo 4	Karang Tunggal	112° 50' 28.475" E	2° 0' 48.851" S	0.75	0.75	0.75	NL	2021
821	Warno Atmojo 5	Karang Tunggal	112° 50' 50.896" E	2° 0' 10.618" S	1	1	23.04	NL	2021
822	Warno Atmojo 6	Karang Tunggal	112° 52' 10.728" E	1° 59' 3.701" S	0.75	0.75	14.94	NL	2021
823	Warya	Karang Tunggal	112° 51' 8.390" E	1° 59' 17.134" S	0.7	0.7	16.03	NL	2021
824	Watiri 1	Karang Tunggal	112° 51' 46.472" E	1° 59' 41.969" S	0.75	0.75	0	L	2021
825	Watiri 2	Karang Tunggal	112° 51' 21.565" E	2° 0' 9.134" S	1	1	19.92	NL	2021
826	Widodo 1	Karang Tunggal	112° 51' 11.907" E	1° 58' 58.307" S	1	1	22.32	NL	2021
827	Widodo 2	Karang Tunggal	112° 51' 2.119" E	1° 59' 5.200" S	0.25	0.25	5.28	NL	2021
828	Widodo 3	Karang Tunggal	112° 51' 26.168" E	2° 0' 37.432" S	0.75	0.75	16.38	NL	2021
829	Widodo 4	Karang Tunggal	112° 51' 15.185" E	2° 0' 21.483" S	0.75	0.75	16.20	NL	2021
830	Widodo 5	Karang Tunggal	112° 51' 18.094" E	2° 0' 49.565" S	1	1	22.32	L	2021
831	Widodo 6	Karang Tunggal	112° 51' 18.467" E	2° 0' 46.366" S	1	1	19.20	L	2021

Public

832	Widodo 7	Karang Tunggal	112° 51' 34.232" E	2° 0' 35.064" S	0.75	0.75	15.84	NL	2021
833	Widodo 8	Karang Tunggal	112° 51' 43.391" E	2° 0' 39.446" S	0.75	0.75	17.82	L	2021
834	Widodo 9	Karang Tunggal	112° 51' 35.862" E	2° 0' 41.845" S	0.75	0.75	0	NL	2021
835	Widodo 10	Karang Tunggal	112° 51' 35.484" E	2° 0' 45.077" S	0.75	0.75	0	NL	2021
836	Widodo 11	Karang Tunggal	112° 51' 34.611" E	2° 0' 31.828" S	0.75	0.75	14.94	NL	2021
837	Widodo 12	Karang Tunggal	112° 51' 37.372" E	2° 0' 28.944" S	0.75	0.75	19.44	NL	2021
838	Widodo 13	Karang Tunggal	112° 51' 15.378" E	2° 0' 19.867" S	0.25	0.25	6.00	NL	2021
839	Widodo 14	Karang Tunggal	112° 51' 15.286" E	2° 0' 20.660" S	0.25	0.25	6.24	NL	2021
840	Widodo 15	Karang Tunggal	112° 50' 54.890" E	2° 0' 49.994" S	1	1	26.16	L	2021
841	Widodo 16	Karang Tunggal	112° 51' 55.415" E	1° 59' 12.296" S	0.75	0.75	19.08	NL	2021
842	Widodo 17	Karang Tunggal	112° 51' 39.098" E	1° 58' 57.762" S	1	1	20.06	NL	2021
843	Widodo 18	Karang Tunggal	112° 50' 52.870" E	1° 59' 37.936" S	1	1	21.12	NL	2021
844	Widodo 19	Karang Tunggal	112° 51' 6.210" E	1° 59' 34.028" S	0.22	0.22	4.64	NL	2021
845	Widodo 20	Karang Tunggal	112° 51' 30.520" E	1° 58' 52.136" S	1	1	21.12	NL	2021
846	Widodo 21	Karang Tunggal	112° 51' 4.994" E	1° 59' 23.093" S	0.99	0.99	21.10	NL	2021
847	Widodo 22	Karang Tunggal	112° 51' 1.784" E	1° 59' 23.440" S	1.12	1.12	21.83	NL	2021
848	Widodo 23	Karang Tunggal	112° 50' 58.627" E	1° 59' 23.389" S	1.2	1.2	30.76	NL	2021
849	Widodo 24	Karang Tunggal	112° 50' 48.626" E	1° 59' 30.088" S	1.18	1.18	23.58	NL	2021
850	Wiki Lestiyani	Karang Tunggal	112° 51' 12.334" E	1° 59' 45.023" S	0.25	0.25	6.24	NL	2021
851	Wit Yanto 1	Sawo	112° 51' 38.178" E	1° 59' 37.602" S	1	1	19.20	NL	2021
852	Wit Yanto 2	Sawo	112° 51' 42.495" E	1° 59' 36.246" S	1	1	22.80	NL	2021
853	Wit Yanto 3	Sawo	112° 51' 40.998" E	1° 59' 39.088" S	1	1	21.36	NL	2021
854	Yaya Kurniawati 1	Karang Tunggal	112° 51' 56.727" E	1° 59' 32.769" S	0.75	0.75	14.36	NL	2021
855	Yaya Kurniawati 2	Karang Tunggal	112° 51' 50.587" E	1° 59' 11.861" S	0.75	0.75	19.15	NL	2021
856	Yayah Khoiriyah	Karang Tunggal	112° 51' 7.119" E	1° 59' 11.600" S	0.75	0.75	15.84	NL	2021



Public

857	Yuli Rahmanto 1	Karang Tunggal	112° 51' 20.426" E	1° 59' 11.211" S	0.87	0.87	18.88	NL	2021
858	Yuli Rahmanto 2	Karang Tunggal	112° 51' 41.349" E	1° 59' 24.676" S	1	1	26.40	NL	2021
859	Yuli Rahmanto 3	Karang Tunggal	112° 52' 4.393" E	1° 59' 10.029" S	1	1	26.16	NL	2021
860	Yumah 1	Karang Tunggal	112° 51' 25.125" E	1° 59' 4.554" S	1	1	20.16	NL	2021
861	Yumah 2	Karang Tunggal	112° 51' 39.480" E	1° 59' 41.967" S	1	1	0	NL	2021
862	Yumah 3	Karang Tunggal	112° 51' 28.770" E	2° 0' 9.278" S	1	1	22.56	NL	2021
863	Yumah 4	Karang Tunggal	112° 51' 5.008" E	2° 0' 47.981" S	1	1	19.68	NL	2021
864	Yumah 5	Karang Tunggal	112° 51' 1.390" E	2° 0' 50.785" S	1	1	20.64	NL	2021
865	Yumah 6	Karang Tunggal	112° 50' 52.907" E	1° 58' 59.021" S	1.03	1.03	21.21	NL	2021
866	Yumah 7	Karang Tunggal	112° 50' 52.413" E	1° 59' 5.504" S	1.63	1.63	36.44	NL	2021
867	Yunia Safitri	Karang Tunggal	112° 52' 42.930" E	1° 59' 21.849" S	1.99	1.99	48.73	L	2021
<b>TOTAL</b>					711.24	711.24	14,000.00		

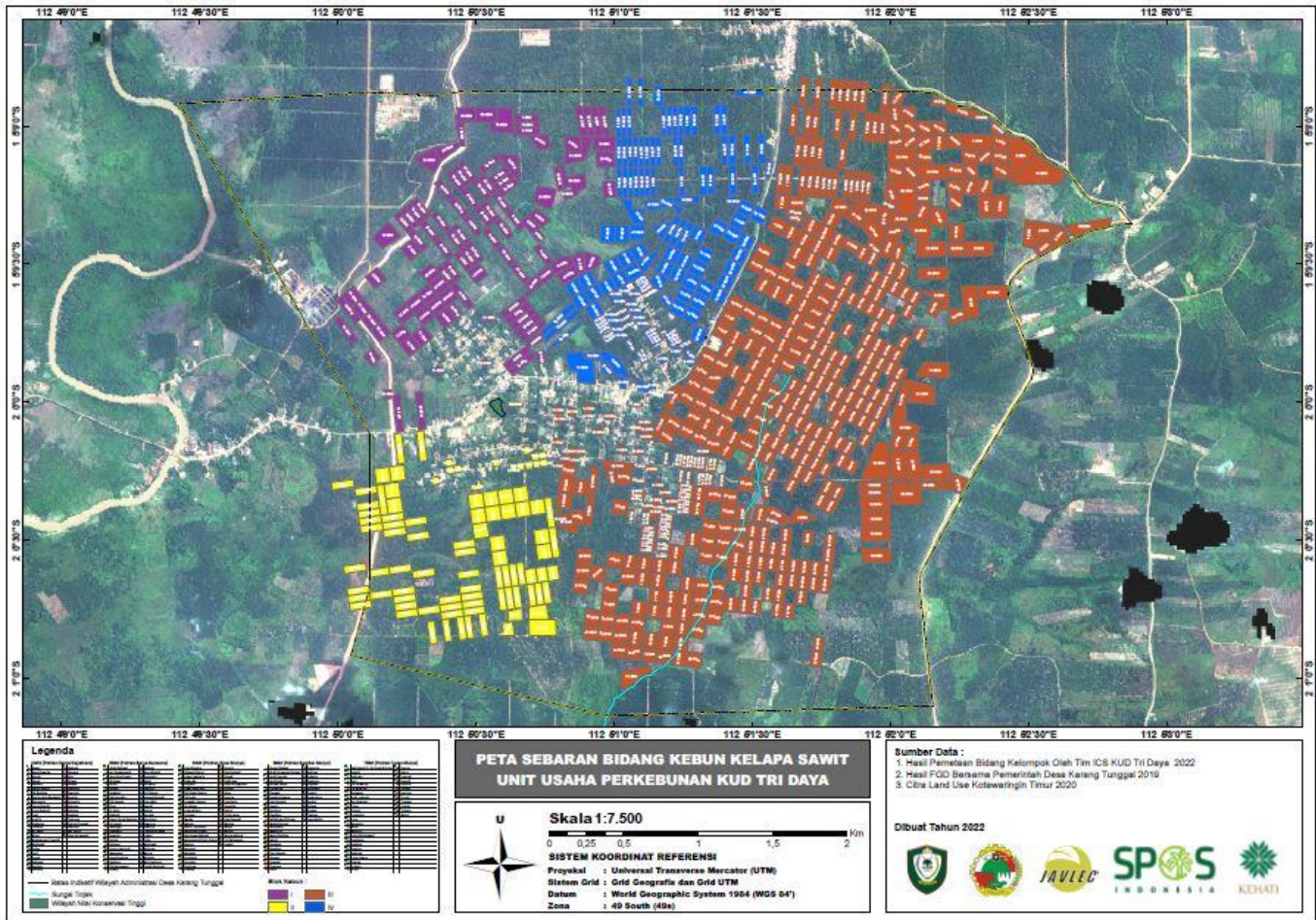
Note: L – with Liability; NL – No Liability

The members to this certification does not involve new development. Consequently, there is no NPP process.

To navigate the details of the RaCP, more information in regard to the potential liability can be found from RSPO website (<https://www.rspo.org/certification/remediation-and-compensation/racp-tracker>)

### 3. Location maps of the ISH group

Public



BSI Services Malaysia Sdn. Bhd. is accredited to provide independent third-party RSPO P&C and RSPO SCCS certification services. BSI Malaysia is a subsidiary of BSI Group, a Royal Charter Company. BSI is the world’s Trusted brand in providing business improvement solutions with more than 86,000 clients in over 193 countries. BSI’s mission is to share knowledge, innovation and best practice to help people and organizations make excellence a habit. BSI is the U.K.’s National Standards Body. BSI Services Malaysia Sdn. Bhd. has RSPO affiliate offices in Indonesia, Australia, China and India.

The audit team for this audit will consists the following:

Audit Team	Role/Area of Requirement	Qualification and Experience
Mujinius Jalaraya	Team Member Auditing Plantation best management practices, Worker welfare, Worker consultation, stakeholder consultation	<b>Education:</b> Holds a Bachelor Degree majoring in Forest Resources Conservation and Ecotourism from Bogor Agricultural University (IPB). <b>Work Experience:</b> 6 years working experience in palm oil plantations as SHE Assistant at PT. Astra Agro Lestari Tbk and Sustainability Supervisor at Teladan Prima Group. 8 years working experience as RSPO Auditor / Lead Auditor. <b>Training attended:</b> Completed ISO 9001 Lead Auditor course, ISPO Lead Auditor course, Endorsed RSPO P&C Lead Auditor course, Endorsed RSPO SCCS Lead Auditor course, Introductory Course for

Public

		High Conservation Value and High Carbon Stock (HCS) in Oil Palm Plantation, ISO 14001 Internal Auditor Training, ISO 45001 Lead Auditor course, OHS Expert Training, SMETA Requirements Training <b>Language proficiency:</b> Fluent in Bahasa Indonesia and English
Yudwi Wisnu Rahmanto	Team Member Auditing Health and safety, Organization commitment, Legal Compliance, Long-term economic planning, Internal Control System.	<b>Education:</b> Bachelor of Forestry from Gadjah Mada University, Yogyakarta. <b>Work experience:</b> 7 months working experience in oil palm plantation industry as Agronomy Field Assistant. Working experience for more than 11 years as Sustainability Auditor for various standards, including Sustainable Forest Management by FSC FM/COC Scheme, RSPO, ISPO, Coffee And Farmer Equity (C.A.F.E Practices) Starbucks, Organic Standard (EU, NOP, JAS) for Coffee Farmers dan Organic Exchange for Textile <b>Training attended:</b> Has completed training on Endorsed RSPO P&C Lead Auditor Training Course, RSPO NEXT, ISPO Auditor/Lead Auditor Course, RSPO P&C Social and Labour Standards and the Mechanics of Social Auditing Training, SMETA Requirements Training, ISO 9001:2008 Auditor/Lead Auditor Course, GIS-Basic Mapping and Spatial Analysis, Timber Legality Assurance System (SVLK), Verification Organization Training C.A.F.E Practices (Starbucks), UTZ Programme, High Conservation Value (HCV) Training, Sustainability Reporting Assurance Training, Introductory Course for High Conservation Value and High Carbon Stock (HCS) in Oil Palm Plantation, RSPO ISH Standard Training Course and Endorsed RSPO Supply Chain Lead Auditor Training Course. <b>Language proficiency:</b> Fluent in Bahasa Indonesia and English.
Andi Pratama Pasaribu	Team Member Auditing social aspect, Organization policies and procedures, Organization commitment, Environmental impact, Continuous Improvement, Greenhouse Gas mitigation, HCV, Internal Control System.	<b>Education:</b> Holds a Bachelor Degree majoring Social Economy from Jember University. <b>Work Experience:</b> 5 years working experience as Field Agronomy Assistant. 8 years working experience as RSPO Auditor / Lead Auditor. <b>Training attended:</b> Completed Indonesian Sustainable Palm Oil (ISPO) Lead Auditor training, Endorsed RSPO P&C Lead Auditor course, Introductory Course for High Conservation Value and High Carbon Stock (HCS) in Oil Palm Plantation, ISO 9001:2008 Lead Auditor course, ISO 14001:2005 Lead Auditor course, ISO 45001:2018 Lead Auditor Course, RSPO endorsed RSPO SCCS Lead Auditor course, SMETA requirements training <b>Language proficiency:</b> Fluent in Bahasa Indonesia and English

In preparation for the assessment, related stakeholders are invited to provide written input regarding this assessment by commenting on related aspects to the certification unit. Topics that you may wish to comment on are as follows but not limited to:

- Environmental Protection & conservation
- Human rights & workers welfare
- Opportunity for employment
- Company approach to community development
- Your relationship with the company
- Participation in decision making
- Free, prior and informed consent
- Suggestion for improvement

Comments that are received within 30 days from the date of this letter will be considered in the Assessment. Please include the following details in case we may need to contact you for clarification or follow-up on any issue raised by you.





Inspiring trust for a more resilient world.

Public

Name: .....

Email: .....

Position: .....

Phone Number: .....

If you wish your comments to be treated confidentially or to remain anonymous. please mark your reply "CONFIDENTIAL". You may direct your comments to:

**Scheme Manager:**

Dr. Chaiyaporn Seekao  
BSI Services Malaysia Sdn. Bhd.  
Suite 29.01 Level 29 The Gardens North  
Tower, Mid Valley City Lingkaran Syed Putra  
59200 Kuala Nmpur  
Federal Territory, Malaysia  
Faks : +603 9212 9639  
Email : [Chaiyaporn.Seekao@bsigroup.com](mailto:Chaiyaporn.Seekao@bsigroup.com)

**AND / OR**

**Auditee:**

Mr. Rohmat (Group Manager)  
Koperasi Unit Desa Tri Daya  
Jl. Poros Parenggean, Karang Tunggal Village Office  
RT.06 RW.02, Parenggean District, Kotawaringin  
Timur Regency, Kalimantan Tengah Province 74335,  
Indonesia  
Fax : -  
Email : [tridayakud@gmail.com](mailto:tridayakud@gmail.com)

We thank you and appreciate for your comments.

Yours sincerely.

.....  
Chaiyaporn Seekao, Ph.D.  
Technical and Compliance Manager - Food (RSPO)  
BSI Services Malaysia Sdn Bhd