

Date: 7th July 2023

Public Notification :

RSPO [Recertification Audit] of KUD MEKARSARI RSPO Membership : 1-0237-17-000-00

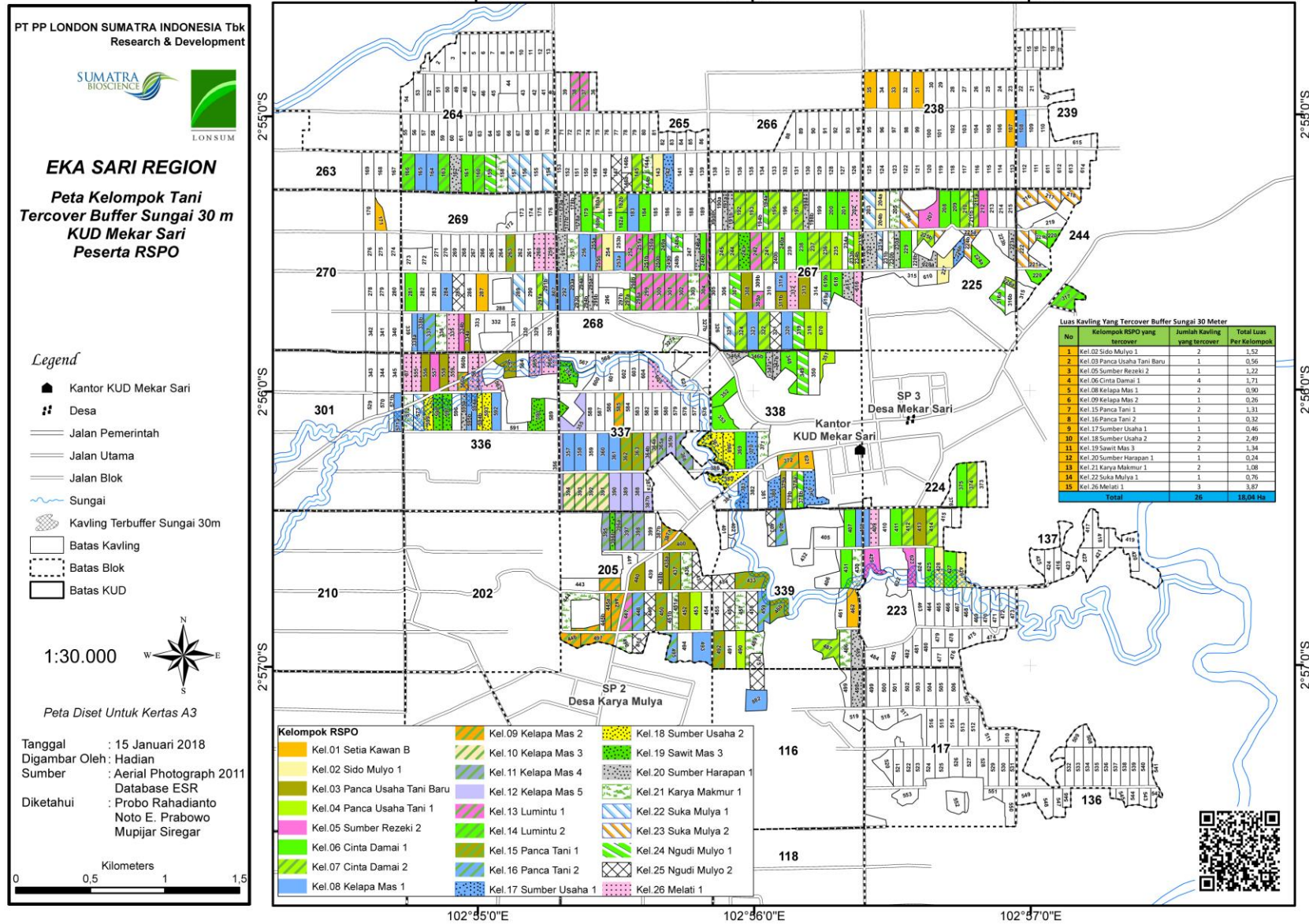
Dear Stakeholders,

This is to inform that the above ISH Group KUD MEKARSARI with RSPO membership number: 1-0237-17-000-00 had appointed CB PT TUV Rheinland Indonesia to conduct the [Recertification Audit] of the group located at Dec a Mekarsari, Megang Sakti Sub-district, Musi Rawas District, South Sumatera Province. The audit will be conducted from August 14th – 18th 2023 against the requirements of RSPO Independent Smallholder Standard 2019.

RSPO Palmtrace ID number of the KUD Mekarsari is **RSPO_PO1000008445**

Name of Group Manager	Group Manager Address	ISH Group Location		GPS Reference	
				Latitude (S/N)	Longitude (E/W)
RATIMAN	Rt 011 Dusun V Dec a Mekarsari Kecamatan Megang Sakti Kabupaten Musi rawas Propinsi Sumatera Selatan	Dec a Mekarsari Kecamatan Megang Sakti Kabupaten Musi rawas Propinsi Sumatera Selatan	Utara	02 °88.111 [N/S]	102 °91.717 [N/S]
			Selatan	02 °94.541 [N/S]	102 °94.303 [N/S]
			Timur	02 °90.396 [N/S]	102 °95.157 [N/S]
			Barat	02 °90.796 [N/S]	102 °90.914 [N/S]

Brief explanation on the ISH Group Background, including the following



List of group members

No.	Name of Farmer	Location	Kavling No	GPS Reference		Area Summary (Ha)		Forecasted Annual FFB Production (MT)*	Any Liabilities?	The date of Joining the group
				Latitude	Longitude	Total Certified Area	Planted Area			
1	Afandi	Dec a Mekarsari	289	02 °55.701 S	102 °56.210 E	2,00	2,00	42.030		15 December 2016
2	Agita Riza Kusuma	Dec a Mekarsari	400	02 °55.552 S	102 °55.698 E	1,33	1,33	30.950		15 December 2016
3	Akimudin	Dec a Mekarsari	327a	02 °55.486 S	102 °56.525 E	1,00	1,00	25.030		15 December 2016
	Akimudin	Dec a Mekarsari	496	02 °55.402 S	102 °56.583 E	1,97	1,97	40.210		15 December 2016
	Akimudin	Dec a Mekarsari	230b	02 °55.406 S	102 °56.806 E	1,00	1,00	24.700		15 December 2016
	Akimudin	Dec a Mekarsari	489	02 °56.876 S	102 °55.702 E	2,00	2,00	38.140		15 December 2016
	Akimudin	Dec a Mekarsari	444	02 °56.746 S	102 °55.389 E	2,00	2,00	44.040		15 December 2016
	Akimudin	Dec a Mekarsari	451a	02 °56.876 S	102 °55.702 E	1,00	1,00	26.780		15 December 2016
4	Ani	Dec a Mekarsari	625	02 °56.540 S	102 °56.689 E	2,00	2,00	35.040		22 Dec 2021
5	Aris Triyana	Dec a Mekarsari	490	02 °56.877 S	102 °55.867 E	2,00	2,00	37.750		15 December 2016
6	Arli Alfian	Dec a Mekarsari	171	02 °55.417 S	102 °54.655 E	2,00	2,00	36.680		22 Dec 2021
7	Asarudin	Dec a Mekarsari	348	02 °55.855 S	102 °56.152 E	2,00	2,00	37.240		15 December 2016
	Asarudin	Dec a Mekarsari	353	02 °56.133 S	102 °55.876 E	2,00	2,00	36.900		15 December 2016
8	Ayu Nurfadila	Dec a Mekarsari	238	02 °55.699 S	102 °54.797 E	1,97	1,97	35.530		11 May 2022
9	Bandi PT 2	Dec a Mekarsari	337	02 °55.715 S	102 °54.798 E	2,00	2,00	41.560		15 December 2016

No.	Name of Farmer	Location	Kavling No	GPS Reference		Area Summary (Ha)		Forecasted Annual FFB Production (MT)*	Any Liabilities?	The date of Joining the group
				Latitude	Longitude	Total Certified Area	Planted Area			
10	Barjo	Dec a Mekarsari	319	02 °55.835 S	102 °56.196 E	2,00	2,00	39.760		15 December 2016
	Barjo	Dec a Mekarsari	349	02 °55.871 S	102 °56.124 E	2,00	2,00	40.930		15 December 2016
11	Basri	Dec a Mekarsari	408	02 °56.443 S	102 °56.395 E	1,98	1,98	44.520		15 December 2016
12	Bokarni	Dec a Mekarsari	182a	02 °55.288 S	102 °56.501 E	1,00	1,00	20.420		15 December 2016
13	Bunari	Dec a Mekarsari	411	02 °56.440 S	102 °56.526 E	2,00	2,00	37.060		22 Dec 2021
14	Cacak Setiawan	Dec a Mekarsari	212	02 °56.311 S	102 °55.983 E	2,00	2,00	43.420		15 December 2016
	Cacak Setiawan	Dec a Mekarsari	380	02 °56.311 S	102 °55.983 E	2,00	2,00	50.540		15 December 2016
15	Catur Beni Saputra	Dec a Mekarsari	164	02 °55.266. S	102 °54.852 E	2,00	2,00	43.530		30 Dec 2020
	Catur Beni Saputra	Dec a Mekarsari	165	02 °55.264 S	102 °54.804 E	2,00	2,00	45.450		30 Dec 2020
16	Cikmas Ali	Dec a Mekarsari	560a	02 °55.955 S	102 °54.931 E	1,00	1,00	27.420		15 December 2016
	Cikmas Ali	Dec a Mekarsari	561	02 °55.829 S	102 °54.937 E	1,51	1,51	27.940		15 December 2016
	Cikmas Ali	Dec a Mekarsari	559	02 °55.859 S	102 °54.950 E	1,51	1,51	27.390		15 December 2016
17	Cipno Pawiro	Dec a Mekarsari	387b	02 °56.434 S	102 °55.632 E	1,02	1,02	24.450		15 December 2016
	Cipno Pawiro	Dec a Mekarsari	365b	02 °56.224 S	102 °55.684 E	1,00	1,00	21.400		15 December 2016
	Cipno Pawiro	Dec a Mekarsari	364b	02 °56.257 S	102 °55.634 E	1,00	1,00	19.530		15 December 2016
18	Cipto	Dec a	391	02 °56.428 S	102 °55.350 E	1,97	1,97			15 December

No.	Name of Farmer	Location	Kavling No	GPS Reference		Area Summary (Ha)		Forecasted Annual FFB Production (MT)*	Any Liabilities?	The date of Joining the group
				Latitude	Longitude	Total Certified Area	Planted Area			
		Mekarsari						41.150		2016
19	Damiri	Dec a Mekarsari	145	02 °56.877 S	102 °55.562 E	1,79	1,79	41.330		15 December 2016
20	Darsini	Dec a Mekarsari	183	02 °56.441 S	102 °56.425 E	1,99	1,99	43.440		15 December 2016
21	Drs Wagino	Dec a Mekarsari	599	02 °56.211 S	102 °55.887 E	1,56	1,56	29.680		15 December 2016
22	Duswanto	Dec a Mekarsari	246a	02 °55.563 S	102 °55.833 E	1,00	1,00	27.910		15 December 2016
23	Dwi Karyanto	Dec a Mekarsari	221b	02 °56.548 S	102 °56.992 E	1,00	1,00	24.260		15 December 2016
24	Eko Danang S.	Dec a Mekarsari	396b	02 °56.446 S	102 °55.439 E	1,00	1,00	29.040		15 December 2016
25	Eling Susilo	Dec a Mekarsari	311b	02 °55.690 E	102 °56.971 E	1,00	1,00	27.410		15 December 2016
	Eling Susilo	Dec a Mekarsari	313	02 °55.698 S	102 °56.193 E	2,00	2,00	39.460		15 December 2016
	Eling Susilo	Dec a Mekarsari	566	02 °55.914 S	102 °55.286 E	1,60	1,60	28.460		15 December 2016
26	Eni Puji Lestari	Dec a Mekarsari	407	02 °56.449 S	102 °56.359 E	2,00	2,00	36.170		15 December 2016
	Eni Puji Lestari	Dec a Mekarsari	200	02 °56.449 S	102 °56.359 E	1,97	1,97	35.250		15 December 2016
	Eni Puji Lestari	Dec a Mekarsari	220	02 °55.410 S	102 °56.312 E	2,00	2,00	35.190		15 December 2016
	Eni Puji Lestari	Dec a Mekarsari	224	02 °55.411 S	102 °56.315 E	1,00	1,00	23.130		15 December 2016
27	Fahrudi Samsul	Dec a Mekarsari	368	02 °56.287 S	102 °55.951 E	1,78	1,78	36.070		15 December 2016
28	Fahrul Samrozi	Dec a Mekarsari	385	02 °56.295 S	102 °55.974 E	2,10	2,10	41.550		15 December 2016

No.	Name of Farmer	Location	Kavling No	GPS Reference		Area Summary (Ha)		Forecasted Annual FFB Production (MT)*	Any Liabilities?	The date of Joining the group
				Latitude	Longitude	Total Certified Area	Planted Area			
29	Ginem	Dec a Mekarsari	412	02 °56.435 S	102 °56.563 E	1,99	1,99	41.950		15 December 2016
30	Gito	Dec a Mekarsari	177b	02 °55.414 S	102 °55.356 E	1,00	1,00	25.350		15 December 2016
	Gito	Dec a Mekarsari	228a	02 °55.486 S	102 °56.582 E	1,00	1,00	25.700		15 December 2016
31	Hambali	Dec a Mekarsari	259	02 °55.559 S	102 °55.269 E	1,58	1,58	28.960		15 December 2016
	Hambali	Dec a Mekarsari	260	02 °55.559 S	102 °55.195 E	1,58	1,58	31.540		15 December 2016
	Hambali	Dec a Mekarsari	312	02 °55.563 S	102 °56.368 E	2,00	2,00	34.560		15 December 2016
32	Hartati	Dec a Mekarsari	367	02 °56.140 S	102 °55.740 E	1,88	1,88	37.390		15 December 2016
33	Hartomo	Dec a Mekarsari	817	02 °56.617 S	102 °56.364 E	1,97	1,97	33.860		15 December 2016
34	Hartono	Dec a Mekarsari	208	02 °55.282 S	102 °56.711 E	2,00	2,00	35.940		25 Nov 2020
	Hartono	Dec a Mekarsari	229	02 °55.489 S	102 °56.557 E	2,00	2,00	35.170		25 Nov 2020
	Hartono	Dec a Mekarsari	209	02 °55.409 S	102 °56.689 E	2,00	2,00	36.250		25 Nov 2020
	Hartono	Dec a Mekarsari	431	02 °55.408 S	102 °56.745 E	1,97	1,97	38.290		25 Nov 2020
	Hartono	Dec a Mekarsari	201	02 °55.410 S	102 °56.297. E	1,97	1,97	37.330		25 Nov 2020
35	Haryati	Dec a Mekarsari	226	02 °55.638 S	102 °56.950 E	1,00	1,00	24.610		15 December 2016
36	Hendri S	Dec a Mekarsari	413	02 °56.436 S	102 °56.597 E	1,96	1,96	37.960		15 December 2016
37	Herman Suyitno	Dec a	357	02 °56.277 S	102 °55.370 E	2,00	2,00			15 December

No.	Name of Farmer	Location	Kavling No	GPS Reference		Area Summary (Ha)		Forecasted Annual FFB Production (MT)*	Any Liabilities?	The date of Joining the group
				Latitude	Longitude	Total Certified Area	Planted Area			
		Mekarsari						43.180		2016
38	Ichsanudin	Dec a Mekarsari	143	02 °55.558 S	102 °55.823 E	1,79	1,79	43.490		25 Nov 2020
39	Indra Hajib	Dec a Mekarsari	362	02 °56.286 S	102 °55.568 E	1,97	1,97	38.190		15 December 2016
	Indra Hajib	Dec a Mekarsari	492	02 °56.723 S	102 °55.762 E	1,98	1,98	36.920		15 December 2016
	Indra Hajib	Dec a Mekarsari	460	02 °55.674 S	102 °54.858 E	1,84	1,84	36.200		15 December 2016
	Indra Hajib	Dec a Mekarsari	437	02 °56.723 S	102 °55.708 E	1,89	1,89	38.020		15 December 2016
	Indra Hajib	Dec a Mekarsari	433	02 °56.722 S	102 °55.955 E	1,56	1,56	30.530		15 December 2016
40	Jadi	Dec a Mekarsari	347a	02 °55.803 S	102 °55.892 E	1,00	1,00	27.610		15 December 2016
41	Jaenudin	Dec a Mekarsari	338a	02 °55.814 S	102 °54.790 E	1,00	1,00	30.770		15 December 2016
	Jaenudin	Dec a Mekarsari	338b	02 °55.686 S	102 °55.303 E	1,00	1,00	22.720		15 December 2016
	Jaenudin	Dec a Mekarsari	253a	02 °55.147 S	102 °55.389 E	1,00	1,00	31.480		15 December 2016
	Jaenudin	Dec a Mekarsari	144a	02 °56.877 S	102 °55.562 E	1,00	1,00	23.730		15 December 2016
	Jaenudin	Dec a Mekarsari	336	02 °55.846 S	102 °54.883 E	2,00	2,00	42.130		15 December 2016
	Jaenudin	Dec a Mekarsari	158	02 °55.272 S	102 °55.108 E	2,00	2,00	43.330		15 December 2016
42	Jaimatun Isa	Dec a Mekarsari	572	02 °56.067 S	102 °55.742 E	1,60	1,60	34.690		15 December 2016
43	Jasmi	Dec a Mekarsari	346a	02 °55.855 S	102 °55.906 E	1,00	1,00	25.120		15 December 2016

No.	Name of Farmer	Location	Kavling No	GPS Reference		Area Summary (Ha)		Forecasted Annual FFB Production (MT)*	Any Liabilities?	The date of Joining the group
				Latitude	Longitude	Total Certified Area	Planted Area			
44	Jokasmo	Dec a Mekarsari	366	02 °56.215 S	102 °55.721 E	2,00	2,00	42.950		15 December 2016
45	Juliaman	Dec a Mekarsari	325	02 °55.848 S	102 °55.062 E	2,00	2,00	44.650		15 December 2016
46	Junaidi 1	Dec a Mekarsari	594a	02 °56.127 S	102 °54.986 E	1,00	1,00	33.130		15 December 2016
	Junaidi 1	Dec a Mekarsari	595b	02 °55.814 S	102 °54.790 E	1,00	1,00	32.560		15 December 2016
	Junaidi 1	Dec a Mekarsari	594b	02 °56.127 S	102 °55.003 E	1,00	1,00	27.610		15 December 2016
	Junaidi 1	Dec a Mekarsari	595a	02 °56.009 S	102 °54.944 E	1,00	1,00	24.610		15 December 2016
47	Junaidi PUT 1	Dec a Mekarsari	233b	02 °55.864 S	102 °56.932 E	1,00	1,00	20.120		15 December 2016
48	Kadirin	Dec a Mekarsari	323	02 °55.815 S	102 °56.973 E	2,00	2,00	45.420		15 December 2016
49	Kamelia	Dec a Mekarsari	335	02 °55.850 S	102 °54.948 E	2,23	2,23	38.550		15 December 2016
50	Kartinem	Dec a Mekarsari	495	02 °55.578 S	102 °55.306 E	2,00	2,00	42.110		15 December 2016
	Kartinem	Dec a Mekarsari	256	02 °55.682 S	102 °54.893 E	2,00	2,00	44.040		15 December 2016
51	Kartubi	Dec a Mekarsari	303	02 °55.584 S	102 °55.375 E	1,94	1,94	41.180		15 December 2016
	Kartubi	Dec a Mekarsari	294	02 °55.704 S	102 °55.383E	1,00	1,00	25.270		15 December 2016
52	Khoironi	Dec a Mekarsari	195	02 °55.410 S	102 °56.060 E	1,97	1,97	41.880		15 December 2016
	Khoironi	Dec a Mekarsari	225a	02 °55.422 S	102 °56.618 E	1,00	1,00	26.880		15 December 2016
53	Kosasih	Dec a	414	02 °56.490 S	102 °56.661 E	1,99	1,99			15 December

No.	Name of Farmer	Location	Kavling No	GPS Reference		Area Summary (Ha)		Forecasted Annual FFB Production (MT)*	Any Liabilities?	The date of Joining the group
				Latitude	Longitude	Total Certified Area	Planted Area			
		Mekarsari						40.430		2016
	Kosasih	Dec a Mekarsari	378	02 °56.369 S	102 °56.171 E	1,00	1,00	29.020		15 December 2016
54	Kun Madari	Dec a Mekarsari	485	02 °56.547 S	102 °56.285 E	2,00	2,00	34.550		15 December 2016
	Kun Madari	Dec a Mekarsari	486	02 °56.908 S	102 °56.365 E	1,99	1,99	41.640		15 December 2016
55	Kurniadi	Dec a Mekarsari	37	02 °54.978 S	102 °55.321 E	2,00	2,00	34.380		15 December 2016
	Kurniadi	Dec a Mekarsari	38	02 °54.979 S	102 °55.346 E	2,00	2,00	33.370		15 December 2016
	Kurniadi	Dec a Mekarsari	298a	02 °55.414 S	102 °56.240 E	1,00	1,00	29.390		15 December 2016
56	Kurniawan	Dec a Mekarsari	309a	02 °55.698 S	102 °56.022 E	1,00	1,00	21.420		15 December 2016
	Kurniawan	Dec a Mekarsari	234	02 °55.559 S	102 °56.002 E	1,97	1,97	35.640		15 December 2016
	Kurniawan	Dec a Mekarsari	447	02 °56.735 S	102 °55.556 E	1,93	1,93	32.480		15 December 2016
	Kurniawan	Dec a Mekarsari	255b	02 °55.484S	102 °55.426 E	1,79	1,79	31.950		15 December 2016
57	Laksono Subekti	Dec a Mekarsari	316a	02 °56.679 S	102 °56.951 E	1,00	1,00	26.480		15 December 2016
	Laksono Subekti	Dec a Mekarsari	378b	02 °56.296 S	102 °56.159 E	1,00	1,00	24.610		15 December 2016
58	Lamyaroh	Dec a Mekarsari	555	02 °55.916 S	102 °55.115 E	1,46	1,46	28.650		15 December 2016
59	Lani Hartati	Dec a Mekarsari	107	02 °55.121 S	102 °56.940 E	2,00	2,00	35.650		15 December 2016
	Lani Hartati	Dec a Mekarsari	621a	02 °56.218 S	102 °56.391 E	1,00	1,00	18.080		15 December 2016

No.	Name of Farmer	Location	Kavling No	GPS Reference		Area Summary (Ha)		Forecasted Annual FFB Production (MT)*	Any Liabilities?	The date of Joining the group
				Latitude	Longitude	Total Certified Area	Planted Area			
	Lani Hartati	Dec a Mekarsari	287	02 °55.711 S	102 °56.029 E	2,00	2,00	34.680		15 December 2016
	Lani Hartati	Dec a Mekarsari	462	02 °55.748 S	102 °56.371 E	2,00	2,00	32.680		15 December 2016
60	Lastri	Dec a Mekarsari	251a	02 °55.704 S	102 °55.599 E	1,00	1,00	18.600		15 December 2016
	Lastri	Dec a Mekarsari	250a	02 °55.547 S	102 °55.601 E	1,00	1,00	19.300		15 December 2016
	Lastri	Dec a Mekarsari	299	02 °55.691 S	102 °55.831 E	1,59	1,59	25.310		15 December 2016
	Lastri	Dec a Mekarsari	252	02 °56.126 S	102 °55.497 E	1,79	1,79	34.630		15 December 2016
61	Legimin	Dec a Mekarsari	180a	02 °55.347 S	102 °55.443 E	1,00	1,00	24.480		15 December 2016
62	M Muson	Dec a Mekarsari	257	02 °55.548 S	102 °55.349 E	1,79	1,79	37.650		15 December 2016
63	M Ridwan	Dec a Mekarsari	162	02 °55.859 S	102 °56.068 E	2,00	2,00	49.620		15 December 2016
64	M. Taufik Chan	Dec a Mekarsari	31	02 °54.975 S	102 °56.532 E	2,00	2,00	35.330		15 December 2016
	M. Taufik Chan	Dec a Mekarsari	33	02 °54.971 S	102 °56.516 E	2,00	2,00	35.840		15 December 2016
65	Mahmi	Dec a Mekarsari	154	02 °55.139 S	102 °55.276 E	2,00	2,00	36.550		15 December 2016
	Mahmi	Dec a Mekarsari	291b	02 °55.657 S	102 °55.058 E	1,00	1,00	21.820		15 December 2016
	Mahmi	Dec a Mekarsari	298	02 °55.569 S	102 °56.008 E	1,00	1,00	29.110		15 December 2016
66	Mardi	Dec a Mekarsari	258	02 °56.130 S	102 °55.053 E	1,79	1,79	33.380		15 December 2016
67	Mardianto Sarju	Dec a	364a	02 °56.256 S	102 °55.652 E	1,00	1,00			15 December

No.	Name of Farmer	Location	Kavling No	GPS Reference		Area Summary (Ha)		Forecasted Annual FFB Production (MT)*	Any Liabilities?	The date of Joining the group
				Latitude	Longitude	Total Certified Area	Planted Area			
		Mekarsari						24.240		2016
68	Marjo Wiyono	Dec a Mekarsari	396a	02 °56.446 S	102 °55.459 E	1,00	1,00	25.420		15 December 2016
69	Marwan Chandra	Dec a Mekarsari	218	02 °55.288 S	102 °57.139 E	2,00	2,00	44.550		15 December 2016
	Marwan Chandra	Dec a Mekarsari	206	02 °55.274 S	102 °56.527 E	1,80	1,80	43.320		15 December 2016
70	Marwiah	Dec a Mekarsari	571a	02 °56.127 S	102 °54.957 E	1,00	1,00	32.810		15 December 2016
71	Maryati SM 1	Dec a Mekarsari	598	02 °56.048 S	102 °54.903 E	1,60	1,60	42.280		15 December 2016
73	Maryati SU 1	Dec a Mekarsari	377	02 °56.217 S	102 °56.010 E	1,97	1,97	43.770		15 December 2016
	Maryati SU 1	Dec a Mekarsari	383	02 °56.280 S	102 °55.999 E	1,79	1,79	40.780		15 December 2016
73	Medio Dec tian	Dec a Mekarsari	35	02 °54.980 S	102 °56.423 E	2,00	2,00	35.330		22 Dec 2021
74	Muji Watini	Dec a Mekarsari	516	02 °55.695 S	102 °56.143 E	2,00	2,00	35.360		15 December 2016
75	Mulyono CD 2	Dec a Mekarsari	245	02 °55.558 S	102 °55.854 E	1,97	1,97	42.280		15 December 2016
	Mulyono CD 2	Dec a Mekarsari	182	02 °55.414 S	102 °55.544 E	1,00	1,00	25.053		15 December 2016
76	Mulyono SU 1	Dec a Mekarsari	142	02 °56.827 S	102 °55.589 E	1,79	1,79	44.820		15 December 2016
	Mulyono SU 1	Dec a Mekarsari	226b	02 °55.531 S	102 °56.730 E	1,00	1,00	25.710		15 December 2016
	Mulyono SU 1	Dec a Mekarsari	370	02 °56.367 S	102 °56.185 E	1,67	1,67	40.600		15 December 2016
77	Murih	Dec a Mekarsari	295a	02 °55.587 S	102 °55.390 E	1,00	1,00	25.410		15 December 2016

No.	Name of Farmer	Location	Kavling No	GPS Reference		Area Summary (Ha)		Forecasted Annual FFB Production (MT)*	Any Liabilities?	The date of Joining the group
				Latitude	Longitude	Total Certified Area	Planted Area			
78	Musaat	Dec a Mekarsari	192	02 °55.411 S	102 °55.946 E	2,00	2,00	44.170		15 December 2016
79	Nardianto	Dec a Mekarsari	360	02 °56.277 S	102 °55.497 E	1,97	1,97	45.090		15 December 2016
80	Nursalim	Dec a Mekarsari	619b	02 °55.567 S	102 °56.235 E	2,00	2,00	37.120		15 December 2016
	Nursalim	Dec a Mekarsari	240	02 °55.555 S	102 °56.100 E	1,00	1,00	20.210		15 December 2016
81	Nurudin Anwar	Dec a Mekarsari	430	02 °56.612 S	102 °56.332 E	1,99	1,99	38.730		15 December 2016
82	Nurzaman	Dec a Mekarsari	227	02 °55.523 S	102 °56.672 E	2,00	2,00	43.050		15 December 2016
83	Pami	Dec a Mekarsari	184	02 °55.413 S	102 °55.615 E	2,00	2,00	38.160		15 December 2016
	Pami	Dec a Mekarsari	179	02 °55.397 S	102 °55.600 E	1,99	1,99	34.630		15 December 2016
84	Pardan	Dec a Mekarsari	807	02 °55.708 S	102 °54.816 E	2,00	2,00	44.440		15 December 2016
85	Parno	Dec a Mekarsari	307	02 °55.701 S	102 °55.940 E	2,00	2,00	37.640		15 December 2016
	Parno	Dec a Mekarsari	248a	02 °55.569 S	102 °55.921 E	1,00	1,00	23.390		15 December 2016
86	Parwoto	Dec a Mekarsari	458	02 °56.737 S	102 °55.977 E	2,00	2,00	36.660		15 December 2016
	Parwoto	Dec a Mekarsari	434	02 °56.879 S	102 °55.528 E	2,00	2,00	38.270		15 December 2016
	Parwoto	Dec a Mekarsari	403	02 °56.716 S	102 °55.925 E	1,00	1,00	25.530		15 December 2016
	Parwoto	Dec a Mekarsari	435	02 °56.732 S	102 °55.659 E	2,00	2,00	35.770		15 December 2016
	Parwoto	Dec a	813	02 °56.460 S	102 °56.914 E	2,00	2,00			15 December

No.	Name of Farmer	Location	Kavling No	GPS Reference		Area Summary (Ha)		Forecasted Annual FFB Production (MT)*	Any Liabilities?	The date of Joining the group
				Latitude	Longitude	Total Certified Area	Planted Area			
		Mekarsari						32.250		2016
	Parwoto	Dec a Mekarsari	190b	02 °565.373 S	102 °55.852 E	2,00	2,00	37.070		15 December 2016
	Parwoto	Dec a Mekarsari	147	02 °55.137 S	102 °55.490 E	1,79	1,79	35.780		15 December 2016
	Parwoto	Dec a Mekarsari	146	02 °55.144 S	102 °55.499 E	1,00	1,00	20.600		15 December 2016
87	Patri	Dec a Mekarsari	244	02 °55.564 S	102 °55.864 E	1,97	1,97	40.660		15 December 2016
88	Pebriyanti	Dec a Mekarsari	590	02 °56.123 S	102 °54.838 E	1,60	1,60	39.380		15 December 2016
89	Pin Hafsari	Dec a Mekarsari	374	02 °56.363 S	102 °56.792 E	2,00	2,00	40.300		11 May 2022
90	Pinsen Prabowo	Dec a Mekarsari	202	02 °55.412 S	102 °56.359 E	1,97	1,97	35.280		25 Nov 2020
91	Ponatin	Dec a Mekarsari	284	02 °56.277 S	102 °55.497 E	2,00	2,00	43.490		15 December 2016
92	Puji Rahayu	Dec a Mekarsari	442	02 °56.869 S	102 °55.470 E	1,97	1,97	48.140		15 December 2016
	Puji Rahayu	Dec a Mekarsari	445a	02 °56.723 S	102 °55.449 E	1,00	1,00	23.770		15 December 2016
93	Pujianto	Dec a Mekarsari	428	02 °56.271 S	102 °57.091 E	1,60	1,60	34.770		15 December 2016
94	Purwadi	Dec a Mekarsari	392	02 °56.428 S	102 °55.414 E	1,97	1,97	48.080		15 December 2016
95	Purwo Susilo	Dec a Mekarsari	144b	02 °55.140 S	102 °55.543 E	1,00	1,00	26.650		15 December 2016
96	Rahayu	Dec a Mekarsari	285	02 °55.711 S	102 °56.029 E	2,00	2,00	36.740		15 December 2016
	Rahayu	Dec a Mekarsari	321	02 °55.833 S	102 °55.990 E	2,00	2,00	37.340		15 December 2016

No.	Name of Farmer	Location	Kavling No	GPS Reference		Area Summary (Ha)		Forecasted Annual FFB Production (MT)*	Any Liabilities?	The date of Joining the group
				Latitude	Longitude	Total Certified Area	Planted Area			
97	Rahono	Dec a Mekarsari	225	02 °55.420 S	102 °56.661 E	2,00	2,00	45.440		15 December 2016
98	Rakiman	Dec a Mekarsari	347b	02 °55.778 S	102 °55.880 E	1,00	1,00	25.240		15 December 2016
99	Ratiman	Dec a Mekarsari	255a	02 °55.686 S	102 °55.303 E	1,00	1,00	33.350		15 December 2016
	Ratiman	Dec a Mekarsari	493	02 °55.547 S	102 °55.389 E	1,53	1,53	33.370		15 December 2016
	Ratiman	Dec a Mekarsari	292	02 °57.099 S	102 °55.988 E	2,00	2,00	43.570		15 December 2016
	Ratiman	Dec a Mekarsari	293a	02 °55.426 S	102 °55.397 E	1,00	1,00	36.490		15 December 2016
	Ratiman	Dec a Mekarsari	409	02 °56.441 S	102 °56.425 E	2,00	2,00	34.780		15 December 2016
	Ratiman	Dec a Mekarsari	263	02 °55.674 S	102 °55.568 E	2,00	2,00	38.760		15 December 2016
100	Ricky Dwi Prasetyo	Dec a Mekarsari	459	02 °56.732 S	102 °56.580 E	1,75	1,75	41.550		22 Dec 2021
	Ricky Dwi Prasetyo	Dec a Mekarsari	404	02 °56.730 S	102 °56.032 E	1,97	1,97	41.710		22 Dec 2021
101	Ridwan	Dec a Mekarsari	372	02 °56.244 S	102 °56.112 E	1,49	1,49	37.450		15 December 2016
102	Robiyatiun ISA	Dec a Mekarsari	573	02 °55.057 S	102 °54.726 E	1,60	1,60	35.970		15 December 2016
103	Rukmini	Dec a Mekarsari	363	02 °56.291 S	102 °55.600 E	1,97	1,97	39.270		15 December 2016
	Rukmini	Dec a Mekarsari	450	02 °56.875 S	102 °55.972 E	1,97	1,97	37.260		15 December 2016
104	Rumsi Triana	Dec a Mekarsari	394	02 °56.428 S	102 °55.323 E	1,97	1,97	42.360		15 December 2016
105	Rusmi	Dec a	87	02 °55.864 S	102 °55.119 E	1,29	1,29			15 December

No.	Name of Farmer	Location	Kavling No	GPS Reference		Area Summary (Ha)		Forecasted Annual FFB Production (MT)*	Any Liabilities?	The date of Joining the group
				Latitude	Longitude	Total Certified Area	Planted Area			
		Mekarsari						23.670		2016
106	Rusmini	Dec a Mekarsari	593	02 °56.127 S	102 °55.050 E	1,60	1,60	31.560		15 December 2016
107	S. Sumiyati	Dec a Mekarsari	197	02 °55.452 S	102 °56.159 E	2,00	2,00	44.140		22 Dec 2021
108	Sapta Karana	Dec a Mekarsari	562	02 °55.942 S	102 °54.982 E	1,73	1,73	30.450		15 December 2016
109	Sarji	Dec a Mekarsari	300	02 °55.695 S	102 °55.643 E	1,99	1,99	34.190		15 December 2016
	Sarji	Dec a Mekarsari	301	02 °55.675 S	102 °55.643 E	1,99	1,99	33.730		15 December 2016
	Sarji	Dec a Mekarsari	302	02 °55.695 S	102 °55.643 E	1,99	1,99	33.050		15 December 2016
	Sarji	Dec a Mekarsari	304	02 °55.947 S	102 °55.304 E	1,99	1,99	33.380		15 December 2016
110	Sarjio	Dec a Mekarsari	597	02 °55.947 S	102 °55.304 E	1,60	1,60	40.430		15 December 2016
	Sarjio	Dec a Mekarsari	354	02 °55.930 S	102 °55.304 E	1,93	1,93	44.290		15 December 2016
111	Sartono	Dec a Mekarsari	318	02 °55.834 S	102 °56.160 E	2,00	2,00	37.560		15 December 2016
112	Siti Aisyah S.Pd	Dec a Mekarsari	156	02 °55.271 S	102 °55.180 E	2,00	2,00	45.960		15 December 2016
	Siti Aisyah S.Pd	Dec a Mekarsari	157	02 °55.269 S	102 °55.157 E	2,00	2,00	45.440		15 December 2016
113	Siti Aminah	Dec a Mekarsari	205	02 °55.406 S	102 °56.806 E	2,00	2,00	38.380		15 December 2016
	Siti Aminah	Dec a Mekarsari	821	02 °55.398 S	102 °56.589 E	2,00	2,00	40.710		15 December 2016
	Siti Aminah	Dec a Mekarsari	211b	02 °55.287 S	102 °56.800 E	1,00	1,00	25.770		15 December 2016

No.	Name of Farmer	Location	Kavling No	GPS Reference		Area Summary (Ha)		Forecasted Annual FFB Production (MT)*	Any Liabilities?	The date of Joining the group
				Latitude	Longitude	Total Certified Area	Planted Area			
	Siti Aminah	Dec a Mekarsari	457	02 °55.398 S	102 °56.589 E	2,21	2,21	39.820		15 December 2016
114	Siti Nurida	Dec a Mekarsari	592	02 °56.127 S	102 °55.050 E	1,60	1,60	42.200		15 December 2016
115	Slamet Prihatin	Dec a Mekarsari	395	02 °56.446 S	102 °55.427 E	1,97	1,97	41.630		15 December 2016
116	Slamet Riyanto	Dec a Mekarsari	322	02 °55.847 S	102 °55.993 E	2,00	2,00	36.230		15 December 2016
	Slamet Riyanto	Dec a Mekarsari	456	02 °55.765 S	102 °56.615 E	1,97	1,97	38.180		15 December 2016
	Slamet Riyanto	Dec a Mekarsari	449	02 °56.752 S	102 °55.917 E	1,97	1,97	36.340		15 December 2016
	Slamet Riyanto	Dec a Mekarsari	575	02 °57.009 S	102 °56.030 E	2,00	2,00	41.780		15 December 2016
117	Solihin	Dec a Mekarsari	361	02 °56.275 S	102 °55.516 E	1,97	1,97	43.290		15 December 2016
118	Sri Patika	Dec a Mekarsari	605	02 °56.211 S	102 °55.941 E	1,44	1,44	26.180		15 December 2016
119	Sriyanto	Dec a Mekarsari	393	02 °56.428 S	102 °55.382 E	1,97	1,97	44.440		15 December 2016
120	Sugeng Widodo	Dec a Mekarsari	160	02 °55.267 S	102 °54.967 E	2,00	2,00	35.850		15 December 2016
121	Sugito	Dec a Mekarsari	198a	02 °55.336 S	102 °55.852 E	1,00	1,00	24.200		15 December 2016
	Sugito	Dec a Mekarsari	191b	02 °56.886 S	102 °56.384 E	1,00	1,00	24.570		15 December 2016
122	Sujono	Dec a Mekarsari	320	02 °55.550 S	102 °54.507 E	2,00	2,00	44.070		15 December 2016
123	Sukamdi	Dec a Mekarsari	497	02 °56.876 S	102 °55.353 E	1,84	1,84	43.890		15 December 2016
124	Sukamtinah	Dec a	388	02 °56.434 S	102 °55.565 E	1,97	1,97			15 December

No.	Name of Farmer	Location	Kavling No	GPS Reference		Area Summary (Ha)		Forecasted Annual FFB Production (MT)*	Any Liabilities?	The date of Joining the group
				Latitude	Longitude	Total Certified Area	Planted Area			
		Mekarsari						37.540		2016
	Sukamtinah	Dec a Mekarsari	390	02 °56.432 S	102 °55.530 E	1,97	1,97	37.920		15 December 2016
125	Sukarti	Dec a Mekarsari	242	02 °55.558 S	102 °55.975 E	1,97	1,97	45.370		22 Dec 2021
126	Sumarni KM 1	Dec a Mekarsari	311a	02 °55.705 S	102 °56.117 E	1,00	1,00	32.800		15 December 2016
127	Sumarni KM 4	Dec a Mekarsari	397	02 °56.442 S	102 °55.553 E	1,97	1,97	43.020		15 December 2016
128	Sumartono	Dec a Mekarsari	237	02 °55.501 S	102 °56.170 E	2,00	2,00	39.840		15 December 2016
129	Sumiyati	Dec a Mekarsari	161	02 °55.269 S	102 °55.942 E	2,00	2,00	36.950		15 December 2016
130	Sundari	Dec a Mekarsari	254	02 °56.126 S	102 °55.497 E	1,79	1,79	38.380		15 December 2016
	Sundari	Dec a Mekarsari	177a	02 °55.425 S	102 °55.317 E	1,00	1,00	26.100		15 December 2016
131	Sungkono	Dec a Mekarsari	178a	02 °55.515 S	102 °55.315 E	1,00	1,00	25.990		15 December 2016
132	Sunoto	Dec a Mekarsari	193	02 °55.451 S	102 °55.909 E	1,97	1,97	41.440		05 Agustus 2021
133	Suparman	Dec a Mekarsari	221a	02 °55.431 S	102 °57.004 E	1,00	1,00	23.280		15 December 2016
	Suparman	Dec a Mekarsari	222	02 °55.546 S	102 °56.968 E	2,00	2,00	43.120		15 December 2016
134	Suparmin	Dec a Mekarsari	182a	02 °55.342 S	102 °55.524 E	1,00	1,00	20.630		15 December 2016
	Suparmin	Dec a Mekarsari	249b	02 °55.358 S	102 °55.545 E	1,00	1,00	26.400		15 December 2016
	Suparmin	Dec a Mekarsari	249a	02 °55.429 S	102 °55.676 E	1,00	1,00	19.400		15 December 2016

No.	Name of Farmer	Location	Kavling No	GPS Reference		Area Summary (Ha)		Forecasted Annual FFB Production (MT)*	Any Liabilities?	The date of Joining the group
				Latitude	Longitude	Total Certified Area	Planted Area			
135	Suparno KM 4	Dec a Mekarsari	398	02 °56.442 S	102 °55.602 E	1,97	1,97	39.740		15 December 2016
	Suparno NM 1	Dec a Mekarsari	159	02 °55.569 S	102 °55.921 E	1,99	1,99	31.200		15 December 2016
136	Suparno NM 1	Dec a Mekarsari	234b	02 °55.481 S	102 °56.336 E	1,00	1,00	28.700		15 December 2016
	Suparno NM 1	Dec a Mekarsari	180b	02 °55.412 S	102 °55.440 E	1,00	1,00	28.320		15 December 2016
137	Suprihatin	Dec a Mekarsari	251b	02 °55.553 S	102 °55.636 E	1,00	1,00	17.690		15 December 2016
	Suprihatin	Dec a Mekarsari	250b	02 °55.414 S	102 °56.240 E	1,00	1,00	17.770		15 December 2016
	Suprihatin	Dec a Mekarsari	163	02 °55.271 S	102 °54.898 E	2,00	2,00	33.510		15 December 2016
	Suprihatin	Dec a Mekarsari	166	02 °55.265 S	102 °54.763 E	2,00	2,00	36.970		15 December 2016
	Suprihatin	Dec a Mekarsari	317	02 °55.658 S	102 °57.102 E	2,00	2,00	32.350		15 December 2016
138	Suprio	Dec a Mekarsari	230a	02 °55.420 S	102 °56.927 E	1,00	1,00	28.470		15 December 2016
139	Supriyanto 1	Dec a Mekarsari	233a	02 °55.841 S	102 °56.237 E	1,00	1,00	20.970		15 December 2016
140	Supriyanto KM 1	Dec a Mekarsari	108	02 °55.944 S	102 °56.377 E	2,00	2,00	44.650		15 December 2016
141	Suroso	Dec a Mekarsari	487	02 °55.843 S	102 °55.965 E	1,99	1,99	39.440		15 December 2016
	Suroso	Dec a Mekarsari	324	02 °55.835 S	102 °55.957 E	2,00	2,00	37.880		15 December 2016
	Suroso	Dec a Mekarsari	291	02 °55.907 S	102 °55.506 E	1,00	1,00	24.380		15 December 2016
	Suroso	Dec a	297	02 °55.715 S	102 °55.513 E	1,00	1,00			15 December


No.	Name of Farmer	Location	Kavling No	GPS Reference		Area Summary (Ha)		Forecasted Annual FFB Production (MT)*	Any Liabilities?	The date of Joining the group
				Latitude	Longitude	Total Certified Area	Planted Area			
		Mekarsari						27.500		2016
142	Suswadi	Dec a Mekarsari	670	02 °55.505 S	102 °55.379 E	2,00	2,00	37.230		15 December 2016
143	Sutarno	Dec a Mekarsari	231a	02 °55.411 S	102 °56.450 E	1,00	1,00	25.390		15 December 2016
	Sutarno	Dec a Mekarsari	619a	02 °55.701 S	102 °56.210 E	1,00	1,00	24.430		15 December 2016
144	Sutarto	Dec a Mekarsari	352	02 °56.274 S	102 °55.925 E	2,00	2,00	39.010		15 December 2016
	Sutarto	Dec a Mekarsari	281	02 °55.708 S	102 °54.784 E	2,00	2,00	36.450		15 December 2016
	Sutarto	Dec a Mekarsari	369a	02 °56.211 S	102 °55.982 E	2,00	2,00	36.440		15 December 2016
	Sutarto	Dec a Mekarsari	375	02 °56.231 S	102 °55.765 E	2,00	2,00	36.550		15 December 2016
	Sutarto	Dec a Mekarsari	369	02 °56.311 S	102 °55.983 E	1,00	1,00	20.400		15 December 2016
145	Sutiono	Dec a Mekarsari	423	02 °56.610 S	102 °56.713 E	2,00	2,00	36.310		15 December 2016
146	Sutoni	Dec a Mekarsari	426	02 °56.273 S	102 °56.820 E	1,90	1,90	40.120		30 December 2020
147	Sutris Wahyuningsih	Dec a Mekarsari	358	02 °56.277 S	102 °55.370 E	2,00	2,00	42.560		15 December 2016
148	Sutrisno 1	Dec a Mekarsari	246	02 °55.429 S	102 °55.816 E	1,00	1,00	21.000		15 December 2016
	Sutrisno 1	Dec a Mekarsari	203	02 °55.280 S	102 °56.830 E	2,00	2,00	43.870		15 December 2016
149	Sutrisno KM 2	Dec a Mekarsari	585	02 °55.540 S	102 °55.493 E	1,62	1,62	38.100		15 December 2016
150	Suwarno	Dec a Mekarsari	191	02 °57.023 S	102 °56.396 E	1,00	1,00	34.010		15 December 2016

No.	Name of Farmer	Location	Kavling No	GPS Reference		Area Summary (Ha)		Forecasted Annual FFB Production (MT)*	Any Liabilities?	The date of Joining the group
				Latitude	Longitude	Total Certified Area	Planted Area			
	Suwarno	Dec a Mekarsari	617	02 °55.567 S	102 °56.327 E	1,80	1,80	38.090		15 December 2016
151	Suwarti	Dec a Mekarsari	194a	02 °56.877 S	102 °55.562 E	1,00	1,00	28.250		15 December 2016
152	Suwoto	Dec a Mekarsari	235	02 °55.556 S	102 °56.301 E	2,00	2,00	35.320		25 November 2020
153	Syaiful Anwar	Dec a Mekarsari	210	02 °55.285 S	102 °56.774 E	2,00	2,00	43.810		11 May 2022
	Syaiful Anwar	Dec a Mekarsari	211	02 °55.290 S	102 °56.790 E	2,00	2,00	39.350		11 May 2022
154	Syaparudin	Dec a Mekarsari	440	02 °56.727 S	102 °55.578 E	1,89	1,89			15 December 2016
	Syaparudin	Dec a Mekarsari	291b	02 °56.727 S	102 °55.773 E	1,00	1,00	24.650		15 December 2016
	Syaparudin	Dec a Mekarsari	221a	02 °56.662 S	102 °55.789 E	1,00	1,00	22.880		15 December 2016
	Syaparudin	Dec a Mekarsari	334a	02 °56.662 S	102 °56.789 E	1,00	1,00	24.160		15 December 2016
	Syaparudin	Dec a Mekarsari	556	02 °56.438 S	102 °56.580 E	1,57	1,57	30.160		15 December 2016
	Syaparudin	Dec a Mekarsari	558	02 °56.438 S	102 °56.580 E	1,57	1,57	33.120		15 December 2016
	Syaparudin	Dec a Mekarsari	563	02 °56.438 S	102 °56.580 E	1,74	1,74	34.600		15 December 2016
155	Tarmuzi	Dec a Mekarsari	351	02 °55.586 S	102 °56.266 E	2,00	2,00	36.370		15 December 2016
156	Teguh Guritno	Dec a Mekarsari	446	02 °56.872 S	102 °55.345 E	1,97	1,97	47.900		15 December 2016
	Teguh Guritno	Dec a Mekarsari	387a	02 °56.517 S	102 °55.713 E	1,00	1,00	32.030		15 December 2016
157	Tresmadi	Dec a	495	02 °56.876 S	102 °55.758 E	1,54	1,54			15 December

No.	Name of Farmer	Location	Kavling No	GPS Reference		Area Summary (Ha)		Forecasted Annual FFB Production (MT)*	Any Liabilities?	The date of Joining the group
				Latitude	Longitude	Total Certified Area	Planted Area			
		Mekarsari						40.680		2016
158	Tugas	Dec a Mekarsari	232	02 °55.514 S	102 °56.433 E	2,00	2,00	44.360		15 December 2016
159	Tumirah	Dec a Mekarsari	223	02 °56.483 S	102 °56.953 E	1,00	1,00	26.480		15 December 2016
160	Tursinah	Dec a Mekarsari	371	02 °56.245 S	102 °56.038 E	1,92	1,92	41.130		15 December 2016
161	Ubaidilah	Dec a Mekarsari	565	02 °55.966 S	102 °54.994 E	1,39	1,39	31.960		15 December 2016
162	Wagino	Dec a Mekarsari	236	02 °55.526 S	102 °56.243 E	1,97	1,97	39.990		15 December 2016
163	Wardi Suprpto	Dec a Mekarsari	365a	02 °56.250 S	102 °55.655 E	1,00	1,00	27.120		15 December 2016
164	Warno	Dec a Mekarsari	396 b	02 °55.288 S	102 °56.501 E	1,00	1,00	21.600		15 December 2016
165	warsinu	Dec a Mekarsari	389	02 °56.130 S	102 °55.310 E	1,97	1,97	39.600		15 December 2016
	warsinu	Dec a Mekarsari	355	02 °56.433 S	102 °55.570 E	1,98	1,98	35.570		15 December 2016
166	Warti	Dec a Mekarsari	298b	02 °55.428 S	102 °55.714 E	1,00	1,00	28.890		25 Nov ember 2020
167	Wayan Eka Sadnyana	Dec a Mekarsari	216	02 °55.279 S	102 °57.102 E	1,80	1,80	43.560		15 December 2016
	Wayan Eka Sadnyana	Dec a Mekarsari	217	02 °55.280 S	102 °56.982 E	1,80	1,80	43.450		15 December 2016
168	widodo	Dec a Mekarsari	356	02 °56.429 S	102 °55.310 E	1,97	1,97	37.040		15 December 2016
169	Winarka	Dec a Mekarsari	498	02 °56.910 S	102 °56.502 E	2,00	2,00	34.370		15 December 2016
170	Wiyoga Rakhmat	Dec a Mekarsari	308	02 °55.567 S	102 °55.982 E	2,00	2,00	39.320		15 December 2016

No.	Name of Farmer	Location	Kavling No	GPS Reference		Area Summary (Ha)		Forecasted Annual FFB Production (MT)*	Any Liabilities?	The date of Joining the group
				Latitude	Longitude	Total Certified Area	Planted Area			
	Pamungkas									
171	Wuri Susanti	Dec a Mekarsari	452	02 °56.730 S	102 °55.789 E	1,97	1,97	39.790		15 December 2016
172	Yanto	Dec a Mekarsari	448	02 °56.908 S	102 °56.424 E	2,25	2,25	46.810		15 December 2016
173	Yatemin	Dec a Mekarsari	241	02 °55.560 S	102 °56.044 E	1,97	1,97	38.750		15 December 2016
174	Zabur	Dec a Mekarsari	623	02 °56.580 S	102 °56.410 E	1,33	1,33	33.500		15 December 2016
	Zabur	Dec a Mekarsari	429	02 °56.673 S	102 °56.541 E	1,61	1,61	40.600		15 December 2016
	Zabur	Dec a Mekarsari	207	02 °55.407 S	102 °56.629 E	2,00	2,00	48.830		15 December 2016
	Zabur	Dec a Mekarsari	334	02 °55.718 S	102 °54.966 E	1,00	1,00	28.210		15 December 2016
	Zabur	Dec a Mekarsari	557	02 °55.872 S	102 °54.833 E	1,52	1,52	40.420		15 December 2016
175	Zubaidah	Dec a Mekarsari	618	02 °55.693 S	102 °56.245 E	2,00	2,00	37.270		15 December 2016
JUMLAH						498,09	498,09	10.482.913		

Note : *)  Replanting Land

 Changing Owner

PT TUV Rheinland Indonesia is member of TÜV Rheinland Group, a global leader in independent testing and assessment services. Established in 1872, TÜV Rheinland Group has over 130 years of experience in providing various types of certifications as well as technical services for over 360 locations in 62 countries worldwide.

The audit team for the audit consists of the following :

Audit Team	Role/Area of Requirement	Qualification and Experience
Mohamad Amarullah	Audit Team Leader - Longterm business plan, SOP implementation, IPM, Pesticide use, Waste management, Water quality, Energy use, GHG, Soil fertility, zero burning & HCV aspects	<ul style="list-style-type: none"> • He has attended some trainings i.e, ISO 17021 & ISO 17065 (2014); HCV (2014); ISPO (ISPO Commission 2014); ISO 9001 & ISO19011 (2014); ISO 14001 (2015); RSPO (Daemeter and Proforest 2016); SA 8000 (2018); life cycle analysis; RSPO SCCS (BM TRADA 2018); Refreshment ISPO Permentan No. 38 in 2020 (Mutu Institute 2021) • He has work experience i.e, Experienced as an auditor for sustainable palm oil scheme since 2014 and a research assistant and oil palm agronomist for over six years (2008-2014).
Bayu Yogatama	Auditor - Environment, OHS, HCV; legal and Best Agricultural Practice	<ul style="list-style-type: none"> • He has attended some trainings i.e, Awareness SA8000 by Aljabar T7C; In House Training ISO 9001, 14001, 45001 Training RSPO SCCS by Checkmark; Training for Auditor Green Industry by Ministry of Industry;In House Training ISO 19011:2018; Training RSPO P&C Lead Auditor by Checkmark; Refreshment ISPO new Standard Permentan 38 year 2020;In House Training In House Training RSPO NPP 2015 & RaCP;IHT OHSAS 18000-2007; and as participant on research seminar for environment conservation scope. • He has work experience i.e, Auditor RSPO and ISPO; Wood product inspector; research assistant on university cooperation project for scope: bird habitat management and Combatting Illegal and Unsustainable Trade in Endangered Species in Indonesia
Budi Setiawan	Auditor - Best Agriculture Practices, Environment, GHG, OHS, SCCS and Legal	<ul style="list-style-type: none"> • He has attended some trainings i.e, Indonesian Sustainable Palm Oil (ISPO) Lead Auditor Course by Komisi ISPO, Quality Management System (QMS) Auditor/Lead Auditor by IRCA (ISO 9001:2008), Environmental Management Systems Auditor/Lead Auditor Conversion Training by IRCA (ISO 14001-2004), Calculation of Green House Gas at Palm Oil Plantation by Komisi ISPO, SVLK Auditor Training by Ministry of Forestry, CoC Auditor by LEI, PUB

Audit Team	Role/Area of Requirement	Qualification and Experience
		<p>and Café training by ministry of tourism, HCV Training, RSPO P&C and SCCS Training (2016), ISCC, ISO 14064 series, AWS, Amdal A & B training</p> <ul style="list-style-type: none"> • He has work experience i.e, <p>Staff RSPO in PT MAS (2008-2009), Staff Planning & Analysis in PT Bakti Sukses Mandiri (2009-2010), PT Mutu Hijau Indonesia, Jakarta as Technical Manager (2015-2016) and HR and finance manager (2014-2015), Auditor in PT Mutu Hijau Indonesia (2010-2016), and Auditor in PT TUV Rheinland In-donesia (2016-present).</p>

CB PT TUV Rheinland Indonesia invites stakeholders to provide comments (if any) on any following matters related to the site for Audit. Comments are only accepted within 30 days from the date of this letter and will be considered in the audit.

Comments that are requested to be treated confidential or to remain anonymous, please insert "CONFIDENTIAL" in the subject of your reply.

Commenters will need to include the details below in case we need to contact you for further clarification on any issues that were raised.

Name : **Mohamad Amarullah**
Position : **Lead Auditor**
Email address : **mohamad.amarullah@tuv.com**
Phone Number : **021 – 579 44 579**

Comments must be sent to :

Certification Body :
PT TUV Rheinland Indonesia
Mohamad Amarullah
Lead Auditor
Menara Karya 10th Floor
Jl. H.R. Rasuna Said Block X-5 Kav 1-2
Jakarta 12950
Tel: +62 21 – 579 44 579
Fax: +62 21 – 579 44 575
Email : mohamad.amarullah@tuv.com
Website: www.tuv.com

Auditee :
KUD MEKARSARI
Name : RATIMAN
Group Manager RSPO KUD Mekarsari :
RATIMAN
Dec a Mekarsari Kec. Megang Sakti Kab. Musi
Rawas Prop. Sumatera Selatan
Tel : 0821-7718-0088
Fax : -
Email : kud.mekarsaridh@gmail.com

Yours faithfully,



Dian S Soeminta
General Manager of Sustainability Assurance
PT TUV Rheinland Indonesia