

Tanggal : 03 November 2023

**Notifikasi untuk Kegiatan Sertifikasi RSPO *Milestone-B* Koperasi Makmur Barokah Belutu (RSPO Membership1-0460-23-000-00, 13 Oktober 2023)**

Stakeholder yang terhormat,

PT Mutuagung Lestari akan melakukan sertifikasi (*Milestone-B*) terhadap Koperasi Makmur Barokah Belutu yang berlokasi di Desa Belutu, Kecamatan Kandis, Kabupaten Siak, Provinsi Riau, Indonesia untuk memenuhi terhadap Standar Pekebun Swadaya RSPO Interpretasi Nasional Indonesia untuk Produksi Minyak Sawit Lestari 2020, disahkan oleh Dewan Gubernur RSPO pada tanggal 14 Februari 2022.

Koperasi Makmur Barokah Belutu telah terdaftar di *PalmTrace IT platform* dengan *member ID RSPO\_PO1000016243* dan akan menjalani proses sertifikasi RSPO untuk keseluruhan area produksi dibawah manajemennya dalam upaya pemenuhan standar RSPO. PT Mutuagung Lestari merencanakan untuk melakukan proses penilaian pada tanggal **11 s.d 13 Desember 2023**.

Nama <i>Group Manager</i>	Alamat <i>Group Manager</i>	Lokasi <i>ISH Group</i>	Referensi GPS	
			Garis Lintang	Garis Bujur
Asmungi	Desa Belutu, Kecamatan Kandis, Kabupaten Siak, Provinsi Riau, Indonesia	Desa Belutu, Kecamatan Kandis, Kabupaten Siak, Provinsi Riau, Indonesia	N 00° 55' 20.7"	E 101° 22' 44.4"

Koperasi Makmur Barokah Belutu beranggotakan petani dari dua desa, yaitu Belutu dan Pencing Bekulo di kecamatan Kandis Kabupaten Siak, Provinsi Riau. Anggota Koperasi Koperasi Makmur Barokah Belutu merupakan petani swadaya yang mengelola kebun secara mandiri.

List of Group Members Koperasi Makmur Barokah Belutu

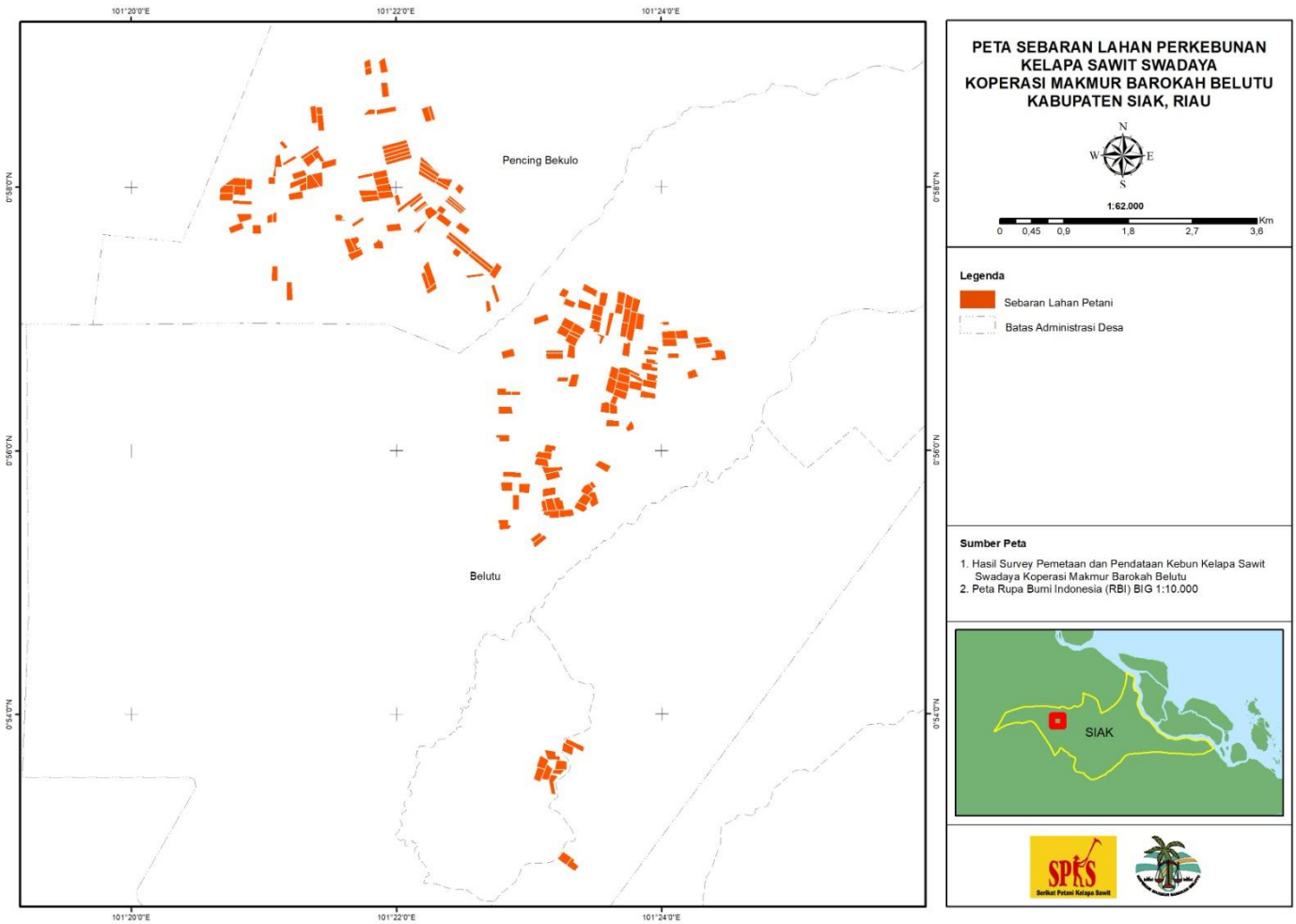
No	Name of Farmer	Location	GPS Reference		Area Summary (Ha)		Forecasted Annual FFB Production (MT)	Any Liabilities? Yes/No	Date of Join on the Group
			Latitude	Longitude	Total Certified Area	Planted Area			
1	Abdul Azis	Belutu Village, Kandis Sub District, Siak District, Riak Province, Indonesia	101° 22' 52.020" E	0° 55' 49.088" N	1.97	1.97	37	No	18 Desember 2023
2	Agnes Febilestari	Belutu Village, Kandis Sub District, Siak District, Riak Province, Indonesia	101° 24' 17.975" E	0° 56' 50.199" N	2.00	2.00	36	No	18 Desember 2023
3	Ahmad Sinaga	Belutu Village, Kandis Sub District, Siak District, Riak Province, Indonesia	101° 23' 6.641" E	0° 55' 57.780" N	2.00	2.00	36	No	18 Desember 2023
4	Arbi Muliadi	Belutu Village, Kandis Sub District, Siak District, Riak Province, Indonesia	101° 22' 49.069" E	0° 56' 18.332" N	2.00	2.00	34	No	18 Desember 2023
5	Asnir Wati	Belutu Village, Kandis Sub District, Siak District, Riak Province, Indonesia	101° 23' 48.383" E	0° 56' 33.197" N	1.00	1.00	20	No	18 Desember 2023
6	Astuti	Belutu Village, Kandis Sub District, Siak District, Riak Province, Indonesia	101° 23' 4.454" E	0° 55' 18.758" N	1.5	1.5	29	No	18 Desember 2023
7	Basiah	Belutu Village, Kandis Sub District, Siak District, Riak Province, Indonesia	101° 23' 41.496" E	0° 57' 9.532" N	1.8	1.8	37	No	18 Desember 2023
8	Boiman	Belutu Village, Kandis Sub District, Siak District, Riak Province, Indonesia	101° 22' 41.355" E	0° 57' 5.727" N	1.00	1.00	19	No	18 Desember 2023
9	Cukup A	Belutu Village, Kandis Sub District, Siak District, Riak Province, Indonesia	101° 23' 9.950" E	0° 55' 51.348" N	2.00	2.00	36	No	18 Desember 2023
10	Cukup B	Belutu Village, Kandis Sub District, Siak District, Riak Province, Indonesia	101° 23' 15.652" E	0° 57' 11.770" N	1.2	1.2	18	No	18 Desember 2023
11	Cukup C	Belutu Village, Kandis Sub District, Siak District, Riak Province, Indonesia	101° 23' 18.063" E	0° 57' 7.158" N	1.46	1.46	20	No	18 Desember 2023
12	Da'mi A	Belutu Village, Kandis Sub District, Siak District, Riak Province, Indonesia	101° 21' 4.726" E	0° 57' 20.606" N	2.00	2.00	36	No	18 Desember 2023
13	Da'mi B	Belutu Village, Kandis Sub District, Siak District, Riak Province, Indonesia	101° 21' 11.333" E	0° 57' 12.585" N	2.12	2.12	38	No	18 Desember 2023
14	Darik	Belutu Village, Kandis Sub District, Siak District, Riak Province, Indonesia	101° 23' 54.683" E	0° 56' 44.565" N	1.06	1.06	16	No	18 Desember 2023
15	Dwi Nurhayati	Belutu Village, Kandis Sub District, Siak District, Riak Province, Indonesia	101° 23' 16.612" E	0° 55' 31.486" N	2.00	2.00	34	No	18 Desember 2023
16	Edi Kesuma	Belutu Village, Kandis Sub District, Siak District, Riak Province, Indonesia	101° 23' 10.330" E	0° 55' 31.074" N	2.00	2.00	35	No	18 Desember 2023
17	Edi Sunarto	Belutu Village, Kandis Sub District, Siak District, Riak Province, Indonesia	101° 23' 5.588" E	0° 55' 54.622" N	1.97	1.97	32	No	18 Desember 2023
18	Erniati	Belutu Village, Kandis Sub District, Siak District, Riak Province, Indonesia	101° 22' 48.278" E	0° 56' 26.569" N	1.67	1.67	32	No	18 Desember 2023
19	Gatot Suroso	Belutu Village, Kandis Sub District, Siak District, Riak Province, Indonesia	101° 23' 40.586" E	0° 57' 4.603" N	1.5	1.5	29	No	18 Desember 2023
20	Giyem	Belutu Village, Kandis Sub District, Siak District, Riak Province, Indonesia	101° 23' 48.019" E	0° 56' 29.600" N	2.00	2.00	35	No	18 Desember 2023
21	Hamzah A	Belutu Village, Kandis Sub District, Siak District, Riak Province, Indonesia	101° 21' 59.056" E	0° 58' 19.319" N	2.00	2.00	35	No	18 Desember 2023
22	Hamzah B	Belutu Village, Kandis Sub District, Siak District, Riak Province, Indonesia	101° 23' 27.420" E	0° 57' 12.993" N	2.08	2.08	36	No	18 Desember 2023
23	Hamzah C	Belutu Village, Kandis Sub District, Siak District, Riak Province, Indonesia	101° 23' 30.414" E	0° 57' 0.397" N	1.04	1.04	19	No	18 Desember 2023
24	Ida Fitri	Belutu Village, Kandis Sub District, Siak District, Riak Province, Indonesia	101° 23' 10.056" E	0° 53' 41.128" N	2.1	2.1	36	No	18 Desember 2023
25	Samini	Belutu Village, Kandis Sub District, Siak District, Riak Province, Indonesia	101° 23' 43.915" E	0° 56' 45.991" N	1.99	1.99	33	No	18 Desember 2023
26	Ihram Syahli	Belutu Village, Kandis Sub District, Siak District, Riak Province, Indonesia	101° 24' 1.591" E	0° 56' 57.877" N	0.53	0.53	10	No	18 Desember 2023
27	Imran	Belutu Village, Kandis Sub District, Siak District, Riak Province, Indonesia	101° 22' 50.369" E	0° 56' 44.092" N	1.97	1.97	32	No	18 Desember 2023
28	Jainal Abidin	Belutu Village, Kandis Sub District, Siak District, Riak Province, Indonesia	101° 22' 57.715" E	0° 55' 42.792" N	2.00	2.00	35	No	18 Desember 2023
29	Joko Suroso	Belutu Village, Kandis Sub District, Siak District, Riak Province, Indonesia	101° 23' 36.896" E	0° 56' 29.575" N	2.5	2.5	50	No	18 Desember 2023
30	Jumakir	Belutu Village, Kandis Sub District, Siak District, Riak Province, Indonesia	101° 23' 3.077" E	0° 55' 20.438" N	1.00	1.00	20	No	18 Desember 2023
31	Kartotiyono A	Belutu Village, Kandis Sub District, Siak District, Riak Province, Indonesia	101° 23' 54.268" E	0° 56' 30.296" N	2.00	2.00	35	No	18 Desember 2023
32	Kartotiyono B	Belutu Village, Kandis Sub District, Siak District, Riak Province, Indonesia	101° 23' 38.290" E	0° 56' 35.254" N	2.00	2.00	36	No	18 Desember 2023
33	Kiwon	Belutu Village, Kandis Sub District, Siak District, Riak Province, Indonesia	101° 23' 5.199" E	0° 56' 59.716" N	2.00	2.00	30	No	18 Desember 2023
34	Mesni	Belutu Village, Kandis Sub District, Siak District, Riak Province, Indonesia	101° 23' 45.553" E	0° 56' 10.718" N	1.09	1.09	17	No	18 Desember 2023
35	M. I. Muhasin	Belutu Village, Kandis Sub District, Siak District, Riak Province, Indonesia	101° 22' 48.228" E	0° 56' 5.759" N	1.6	1.6	35	No	18 Desember 2023
36	Mistok Purba	Belutu Village, Kandis Sub District, Siak District, Riak Province, Indonesia	101° 23' 8.747" E	0° 55' 41.189" N	2.00	2.00	36	No	18 Desember 2023
37	M.Safrizal	Belutu Village, Kandis Sub District, Siak District, Riak Province, Indonesia	101° 23' 55.935" E	0° 56' 46.448" N	1.08	1.08	19	No	18 Desember 2023
38	Nur Sidik	Belutu Village, Kandis Sub District, Siak District, Riak Province, Indonesia	101° 23' 31.062" E	0° 57' 3.863" N	2.03	2.03	37	No	18 Desember 2023
39	Nur Sopa Lubis	Belutu Village, Kandis Sub District, Siak District, Riak Province, Indonesia	101° 23' 19.149" E	0° 56' 50.350" N	2.00	2.00	33	No	18 Desember 2023
40	Olen Sitepu A	Belutu Village, Kandis Sub District, Siak District, Riak Province, Indonesia	101° 23' 10.328" E	0° 53' 28.306" N	2.00	2.00	36	No	18 Desember 2023
41	Olen Sitepu B	Belutu Village, Kandis Sub District, Siak District, Riak Province, Indonesia	101° 23' 4.173" E	0° 53' 32.514" N	2.00	2.00	35	No	18 Desember 2023
42	Paeran	Belutu Village, Kandis Sub District, Siak District, Riak Province, Indonesia	101° 22' 49.719" E	0° 55' 43.692" N	2.00	2.00	36	No	18 Desember 2023
43	Poniman	Belutu Village, Kandis Sub District, Siak District, Riak Province, Indonesia	101° 23' 24.864" E	0° 57' 6.169" N	2.00	2.00	36	No	18 Desember 2023
44	Rahman	Belutu Village, Kandis Sub District, Siak District, Riak Province, Indonesia	101° 23' 9.122" E	0° 56' 0.850" N	1.5	1.5	27	No	18 Desember 2023
45	Rahmawani	Belutu Village, Kandis Sub District, Siak District, Riak Province, Indonesia	101° 22' 53.881" E	0° 56' 25.997" N	0.67	0.67	10	No	18 Desember 2023
46	Rika Anggella Watan	Belutu Village, Kandis Sub District, Siak District, Riak Province, Indonesia	101° 23' 17.327" E	0° 56' 57.724" N	2.00	2.00	35	No	18 Desember 2023
47	Rosmawaty Br. Nasution A	Belutu Village, Kandis Sub District, Siak District, Riak Province, Indonesia	101° 23' 7.949" E	0° 53' 33.209" N	2.00	2.00	36	No	18 Desember 2023
48	Rosmawaty Br. Nasution B	Belutu Village, Kandis Sub District, Siak District, Riak Province, Indonesia	101° 23' 5.797" E	0° 53' 37.807" N	2.00	2.00	37	No	18 Desember 2023

49	Samian	Belutu Village, Kandis Sub District, Siak District, Riak Province, Indonesia	101° 24' 26.022" E	0° 56' 43.198" N	2.27	2.27	39	No	18 Desember 2023
50	Samsuadi	Belutu Village, Kandis Sub District, Siak District, Riak Province, Indonesia	101° 23' 20.460" E	0° 53' 45.835" N	2.00	2.00	37	No	18 Desember 2023
51	Sarino	Belutu Village, Kandis Sub District, Siak District, Riak Province, Indonesia	101° 23' 29.880" E	0° 56' 56.784" N	2.15	2.15	38	No	18 Desember 2023
52	Sarmin A	Belutu Village, Kandis Sub District, Siak District, Riak Province, Indonesia	101° 23' 15.005" E	0° 56' 32.282" N	1.00	1.00	19	No	18 Desember 2023
53	Sarmin B	Belutu Village, Kandis Sub District, Siak District, Riak Province, Indonesia	101° 23' 38.325" E	0° 56' 22.990" N	0.99	0.99	19	No	18 Desember 2023
54	Sela Leli Asri	Belutu Village, Kandis Sub District, Siak District, Riak Province, Indonesia	101° 23' 50.021" E	0° 56' 58.728" N	2.36	2.36	41	No	18 Desember 2023
55	Senang A	Belutu Village, Kandis Sub District, Siak District, Riak Province, Indonesia	101° 23' 11.470" E	0° 56' 42.937" N	2.00	2.00	34	No	18 Desember 2023
56	Senang B	Belutu Village, Kandis Sub District, Siak District, Riak Province, Indonesia	101° 23' 11.382" E	0° 56' 44.943" N	1.00	1.00	20	No	18 Desember 2023
57	Sialip Wibowo	Belutu Village, Kandis Sub District, Siak District, Riak Province, Indonesia	101° 23' 42.076" E	0° 56' 29.193" N	2.00	2.00	37	No	18 Desember 2023
58	Siti Amida Lubis A	Belutu Village, Kandis Sub District, Siak District, Riak Province, Indonesia	101° 23' 15.295" E	0° 56' 54.285" N	1.87	1.87	33	No	18 Desember 2023
59	Siti Amida Lubis B	Belutu Village, Kandis Sub District, Siak District, Riak Province, Indonesia	101° 23' 18.998" E	0° 56' 44.968" N	1.96	1.96	35	No	18 Desember 2023
60	Siti Amida Lubis C	Belutu Village, Kandis Sub District, Siak District, Riak Province, Indonesia	101° 23' 26.046" E	0° 55' 42.197" N	1.7	1.7	35	No	18 Desember 2023
61	Siti Endang Br. Simamora	Belutu Village, Kandis Sub District, Siak District, Riak Province, Indonesia	101° 23' 20.055" E	0° 56' 31.741" N	2.00	2.00	39	No	18 Desember 2023
62	Siti Mariam Lubis	Belutu Village, Kandis Sub District, Siak District, Riak Province, Indonesia	101° 23' 14.233" E	0° 53' 36.680" N	2.02	2.02	37	No	18 Desember 2023
63	Sriani A	Belutu Village, Kandis Sub District, Siak District, Riak Province, Indonesia	101° 23' 6.578" E	0° 55' 34.657" N	1.06	1.06	17	No	18 Desember 2023
64	Sriani B	Belutu Village, Kandis Sub District, Siak District, Riak Province, Indonesia	101° 23' 9.545" E	0° 55' 35.341" N	2.00	2.00	35	No	18 Desember 2023
65	Subakir	Belutu Village, Kandis Sub District, Siak District, Riak Province, Indonesia	101° 23' 15.783" E	0° 52' 54.270" N	2.00	2.00	35	No	18 Desember 2023
66	Sudiono	Belutu Village, Kandis Sub District, Siak District, Riak Province, Indonesia	101° 23' 53.505" E	0° 56' 25.282" N	1.97	1.97	34	No	18 Desember 2023
67	Sukart	Belutu Village, Kandis Sub District, Siak District, Riak Province, Indonesia	101° 23' 53.973" E	0° 56' 37.904" N	2.01	2.01	37	No	18 Desember 2023
68	Sukiyem	Belutu Village, Kandis Sub District, Siak District, Riak Province, Indonesia	101° 23' 23.132" E	0° 55' 34.156" N	1.5	1.5	18	No	18 Desember 2023
69	Sulastr	Belutu Village, Kandis Sub District, Siak District, Riak Province, Indonesia	101° 24' 5.147" E	0° 56' 43.212" N	1.04	1.04	19	No	18 Desember 2023
70	Suliadi A	Belutu Village, Kandis Sub District, Siak District, Riak Province, Indonesia	101° 24' 13.796" E	0° 56' 34.686" N	1.5	1.5	25	No	18 Desember 2023
71	Suliadi B	Belutu Village, Kandis Sub District, Siak District, Riak Province, Indonesia	101° 24' 19.146" E	0° 56' 47.794" N	1.5	1.5	22	No	18 Desember 2023
72	Suliani	Belutu Village, Kandis Sub District, Siak District, Riak Province, Indonesia	101° 23' 32.462" E	0° 56' 51.024" N	0.78	0.78	12	No	18 Desember 2023
73	Suliono	Belutu Village, Kandis Sub District, Siak District, Riak Province, Indonesia	101° 23' 46.324" E	0° 56' 56.582" N	4.00	4.00	79	No	18 Desember 2023
74	Sumaji	Belutu Village, Kandis Sub District, Siak District, Riak Province, Indonesia	101° 23' 33.366" E	0° 55' 52.810" N	2.00	2.00	38	No	18 Desember 2023
75	Sumarni	Belutu Village, Kandis Sub District, Siak District, Riak Province, Indonesia	101° 23' 44.926" E	0° 57' 7.741" N	1.97	1.97	34	No	18 Desember 2023
76	Sunarto	Belutu Village, Kandis Sub District, Siak District, Riak Province, Indonesia	101° 23' 55.181" E	0° 56' 40.514" N	1.00	1.00	21	No	18 Desember 2023
77	Sunyaman A	Belutu Village, Kandis Sub District, Siak District, Riak Province, Indonesia	101° 24' 3.083" E	0° 56' 52.666" N	2.16	2.16	37	No	18 Desember 2023
78	Sunyaman B	Belutu Village, Kandis Sub District, Siak District, Riak Province, Indonesia	101° 24' 9.029" E	0° 56' 52.856" N	2.00	2.00	36	No	18 Desember 2023
79	Suptyok	Belutu Village, Kandis Sub District, Siak District, Riak Province, Indonesia	101° 23' 55.473" E	0° 56' 33.283" N	1.5	1.5	30	No	18 Desember 2023
80	Suparni	Belutu Village, Kandis Sub District, Siak District, Riak Province, Indonesia	101° 21' 5.878" E	0° 58' 10.450" N	2.00	2.00	35	No	18 Desember 2023
81	Suparno	Belutu Village, Kandis Sub District, Siak District, Riak Province, Indonesia	101° 23' 17.184" E	0° 53' 44.102" N	1.9	1.9	34	No	18 Desember 2023
82	Supartik A	Belutu Village, Kandis Sub District, Siak District, Riak Province, Indonesia	101° 23' 38.044" E	0° 56' 18.905" N	1.44	1.44	29	No	18 Desember 2023
83	Supartik B	Belutu Village, Kandis Sub District, Siak District, Riak Province, Indonesia	101° 23' 34.348" E	0° 56' 19.521" N	1.87	1.87	32	No	18 Desember 2023
84	Supriadi	Belutu Village, Kandis Sub District, Siak District, Riak Province, Indonesia	101° 23' 36.250" E	0° 56' 57.825" N	2.00	2.00	39	No	18 Desember 2023
85	Suwandi	Belutu Village, Kandis Sub District, Siak District, Riak Province, Indonesia	101° 24' 3.426" E	0° 56' 49.225" N	2.1	2.1	35	No	18 Desember 2023
86	Suyarti	Belutu Village, Kandis Sub District, Siak District, Riak Province, Indonesia	101° 23' 10.442" E	0° 55' 48.490" N	2.00	2.00	37	No	18 Desember 2023
87	Syamsul	Belutu Village, Kandis Sub District, Siak District, Riak Province, Indonesia	101° 23' 33.392" E	0° 57' 8.954" N	2.00	2.00	37	No	18 Desember 2023
88	Swarno A	Belutu Village, Kandis Sub District, Siak District, Riak Province, Indonesia	101° 23' 42.855" E	0° 56' 55.083" N	1.92	1.92	35	No	18 Desember 2023
89	Swarno B	Belutu Village, Kandis Sub District, Siak District, Riak Province, Indonesia	101° 23' 43.985" E	0° 57' 1.443" N	1.92	1.92	36	No	18 Desember 2023
90	Swarno. S A	Belutu Village, Kandis Sub District, Siak District, Riak Province, Indonesia	101° 23' 21.942" E	0° 56' 55.189" N	2.00	2.00	36	No	18 Desember 2023
91	Swarno. S B	Belutu Village, Kandis Sub District, Siak District, Riak Province, Indonesia	101° 23' 20.663" E	0° 56' 52.783" N	0.88	0.88	14	No	18 Desember 2023
92	Swarno. S C	Belutu Village, Kandis Sub District, Siak District, Riak Province, Indonesia	101° 23' 28.945" E	0° 55' 37.779" N	2.00	2.00	33	No	18 Desember 2023
93	Tugiman	Belutu Village, Kandis Sub District, Siak District, Riak Province, Indonesia	101° 23' 37.639" E	0° 56' 12.323" N	1.6	1.6	33	No	18 Desember 2023
94	Ucok Rahimal	Belutu Village, Kandis Sub District, Siak District, Riak Province, Indonesia	101° 23' 41.126" E	0° 56' 25.810" N	2.00	2.00	35	No	18 Desember 2023
95	Wagrin	Belutu Village, Kandis Sub District, Siak District, Riak Province, Indonesia	101° 23' 13.250" E	0° 55' 35.723" N	2.00	2.00	34	No	18 Desember 2023
96	Walkem A	Belutu Village, Kandis Sub District, Siak District, Riak Province, Indonesia	101° 23' 42.646" E	0° 56' 32.815" N	2.00	2.00	33	No	18 Desember 2023
97	Walkem B	Belutu Village, Kandis Sub District, Siak District, Riak Province, Indonesia	101° 23' 44.517" E	0° 56' 35.838" N	2.00	2.00	34	No	18 Desember 2023
98	Warni	Belutu Village, Kandis Sub District, Siak District, Riak Province, Indonesia	101° 23' 19.408" E	0° 52' 51.223" N	1.59	1.59	26	No	18 Desember 2023
99	Warsono	Belutu Village, Kandis Sub District, Siak District, Riak Province, Indonesia	101° 22' 48.448" E	0° 55' 26.250" N	2.00	2.00	35	No	18 Desember 2023
100	Yaser Lubis	Belutu Village, Kandis Sub District, Siak District, Riak Province, Indonesia	101° 23' 12.786" E	0° 53' 33.693" N	0.94	0.94	21	No	18 Desember 2023
101	Yunus Sumario	Belutu Village, Kandis Sub District, Siak District, Riak Province, Indonesia	101° 23' 48.082" E	0° 57' 6.267" N	2.00	2.00	26	No	18 Desember 2023
102	Zulpandi Alamsyah	Belutu Village, Kandis Sub District, Siak District, Riak Province, Indonesia	101° 23' 24.948" E	0° 55' 37.515" N	1.95	1.95	34	No	18 Desember 2023
103	Ridwan	Belutu Village, Kandis Sub District, Siak District, Riak Province, Indonesia	101° 21' 58.603" E	0° 57' 41.651" N	2.00	2.00	34	No	18 Desember 2023

104	Sidik Budi Pramana	Belutu Village, Kandis Sub District, Siak District, Riak Province, Indonesia	101° 23' 28.517" E	0° 55' 44.284" N	2,00	2,00	36	No	18 Desember 2023
105	Wahyu Rahmat Setiawan	Belutu Village, Kandis Sub District, Siak District, Riak Province, Indonesia	101° 21' 54.638" E	0° 58' 44.345" N	0,53	0,53	9	No	18 Desember 2023
106	Abdi Yakim Daeng	Pencing Bekulo Village, Kandis Sub District, Siak District, Riak Province, Indonesia	101° 21' 2.558" E	0° 57' 45.696" N	1,00	1,00	21	No	18 Desember 2023
107	Ahmad Ali Mursyd Hutabarat	Pencing Bekulo Village, Kandis Sub District, Siak District, Riak Province, Indonesia	101° 21' 53.299" E	0° 58' 2.728" N	1,99	1,99	36	No	18 Desember 2023
108	Alamsyah	Pencing Bekulo Village, Kandis Sub District, Siak District, Riak Province, Indonesia	101° 22' 29.865" E	0° 57' 41.144" N	1,79	1,79	34	No	18 Desember 2023
109	Ali Azhar Daeng	Pencing Bekulo Village, Kandis Sub District, Siak District, Riak Province, Indonesia	101° 21' 4.803" E	0° 57' 46.265" N	0,77	0,77	13	No	18 Desember 2023
110	Anawinta Sahri P/JN	Pencing Bekulo Village, Kandis Sub District, Siak District, Riak Province, Indonesia	101° 22' 27.040" E	0° 57' 30.165" N	1,00	1,00	20	No	18 Desember 2023
111	Arianlo	Pencing Bekulo Village, Kandis Sub District, Siak District, Riak Province, Indonesia	101° 20' 48.797" E	0° 57' 58.555" N	2,2	2,2	37	No	18 Desember 2023
112	Budi Irawan	Pencing Bekulo Village, Kandis Sub District, Siak District, Riak Province, Indonesia	101° 21' 47.159" E	0° 58' 52.844" N	1,00	1,00	20	No	18 Desember 2023
113	Delima Br. Siagian A	Pencing Bekulo Village, Kandis Sub District, Siak District, Riak Province, Indonesia	101° 22' 14.190" E	0° 58' 6.260" N	1,5	1,5	30	No	18 Desember 2023
114	Delima Br. Siagian B	Pencing Bekulo Village, Kandis Sub District, Siak District, Riak Province, Indonesia	101° 22' 13.629" E	0° 58' 4.632" N	1,5	1,5	31	No	18 Desember 2023
115	Edi Dolok Hutabarat A	Pencing Bekulo Village, Kandis Sub District, Siak District, Riak Province, Indonesia	101° 21' 59.985" E	0° 58' 15.886" N	2,00	2,00	33	No	18 Desember 2023
116	Edi Dolok Hutabarat B	Pencing Bekulo Village, Kandis Sub District, Siak District, Riak Province, Indonesia	101° 21' 59.410" E	0° 58' 17.563" N	2,00	2,00	35	No	18 Desember 2023
117	Febri Sulistiono	Pencing Bekulo Village, Kandis Sub District, Siak District, Riak Province, Indonesia	101° 21' 47.021" E	0° 57' 57.403" N	2,00	2,00	36	No	18 Desember 2023
118	Gloria Riahta Simulingga	Pencing Bekulo Village, Kandis Sub District, Siak District, Riak Province, Indonesia	101° 22' 0.395" E	0° 58' 14.173" N	2,00	2,00	35	No	18 Desember 2023
119	Hariadi Lubis	Pencing Bekulo Village, Kandis Sub District, Siak District, Riak Province, Indonesia	101° 21' 24.995" E	0° 58' 34.837" N	1,00	1,00	20	No	18 Desember 2023
120	Hendro Kusmayadi	Pencing Bekulo Village, Kandis Sub District, Siak District, Riak Province, Indonesia	101° 21' 15.300" E	0° 58' 2.065" N	2,00	2,00	35	No	18 Desember 2023
121	Hermin	Pencing Bekulo Village, Kandis Sub District, Siak District, Riak Province, Indonesia	101° 20' 47.765" E	0° 58' 2.399" N	2,7	2,7	52	No	18 Desember 2023
122	Hidayatullahman	Pencing Bekulo Village, Kandis Sub District, Siak District, Riak Province, Indonesia	101° 21' 52.441" E	0° 58' 5.861" N	1,99	1,99	34	No	18 Desember 2023
123	Ila Baini A	Pencing Bekulo Village, Kandis Sub District, Siak District, Riak Province, Indonesia	101° 22' 27.544" E	0° 57' 33.817" N	2,00	2,00	33	No	18 Desember 2023
124	Ila Baini B	Pencing Bekulo Village, Kandis Sub District, Siak District, Riak Province, Indonesia	101° 22' 28.610" E	0° 57' 35.019" N	2,00	2,00	33	No	18 Desember 2023
125	Irma Yulia	Pencing Bekulo Village, Kandis Sub District, Siak District, Riak Province, Indonesia	101° 21' 51.773" E	0° 57' 33.771" N	1,49	1,49	26	No	18 Desember 2023
126	Juniarto	Pencing Bekulo Village, Kandis Sub District, Siak District, Riak Province, Indonesia	101° 21' 33.920" E	0° 57' 45.978" N	1,00	1,00	18	No	18 Desember 2023
127	Junila	Pencing Bekulo Village, Kandis Sub District, Siak District, Riak Province, Indonesia	101° 21' 54.259" E	0° 57' 59.598" N	2,00	2,00	34	No	18 Desember 2023
128	Kasim	Pencing Bekulo Village, Kandis Sub District, Siak District, Riak Province, Indonesia	101° 22' 44.735" E	0° 57' 21.892" N	2,00	2,00	35	No	18 Desember 2023
129	Mai Salamah	Pencing Bekulo Village, Kandis Sub District, Siak District, Riak Province, Indonesia	101° 21' 25.509" E	0° 58' 29.331" N	2,00	2,00	35	No	18 Desember 2023
130	Mariati	Pencing Bekulo Village, Kandis Sub District, Siak District, Riak Province, Indonesia	101° 21' 22.397" E	0° 58' 33.060" N	2,00	2,00	34	No	18 Desember 2023
131	Marsiman	Pencing Bekulo Village, Kandis Sub District, Siak District, Riak Province, Indonesia	101° 21' 41.358" E	0° 57' 29.321" N	2,00	2,00	35	No	18 Desember 2023
132	Marsiah	Pencing Bekulo Village, Kandis Sub District, Siak District, Riak Province, Indonesia	101° 21' 47.883" E	0° 57' 54.807" N	2,00	2,00	32	No	18 Desember 2023
133	Masana Sitepu	Pencing Bekulo Village, Kandis Sub District, Siak District, Riak Province, Indonesia	101° 22' 20.105" E	0° 57' 49.619" N	1,00	1,00	18	No	18 Desember 2023
134	Misran	Pencing Bekulo Village, Kandis Sub District, Siak District, Riak Province, Indonesia	101° 20' 56.625" E	0° 57' 40.718" N	1,5	1,5	29	No	18 Desember 2023
135	Misdi	Pencing Bekulo Village, Kandis Sub District, Siak District, Riak Province, Indonesia	101° 20' 50.879" E	0° 57' 46.339" N	1,98	1,98	35	No	18 Desember 2023
136	Mislan	Pencing Bekulo Village, Kandis Sub District, Siak District, Riak Province, Indonesia	101° 22' 5.703" E	0° 57' 53.029" N	2,00	2,00	36	No	18 Desember 2023
137	Misyanti	Pencing Bekulo Village, Kandis Sub District, Siak District, Riak Province, Indonesia	101° 20' 53.121" E	0° 58' 1.458" N	1,3	1,3	24	No	18 Desember 2023
138	Nasib	Pencing Bekulo Village, Kandis Sub District, Siak District, Riak Province, Indonesia	101° 22' 10.476" E	0° 57' 41.500" N	1,00	1,00	20	No	18 Desember 2023
139	Nisa Kurniawati	Pencing Bekulo Village, Kandis Sub District, Siak District, Riak Province, Indonesia	101° 21' 11.358" E	0° 58' 12.129" N	1,00	1,00	21	No	18 Desember 2023
140	Nurlia Siregar	Pencing Bekulo Village, Kandis Sub District, Siak District, Riak Province, Indonesia	101° 21' 42.341" E	0° 57' 44.189" N	0,9	0,9	21	No	18 Desember 2023
141	Palimah	Pencing Bekulo Village, Kandis Sub District, Siak District, Riak Province, Indonesia	101° 21' 24.304" E	0° 58' 14.242" N	1,51	1,51	31	No	18 Desember 2023
142	Paruntungan Sianturi A	Pencing Bekulo Village, Kandis Sub District, Siak District, Riak Province, Indonesia	101° 22' 14.637" E	0° 58' 8.154" N	2,00	2,00	36	No	18 Desember 2023
143	Paruntungan Sianturi B	Pencing Bekulo Village, Kandis Sub District, Siak District, Riak Province, Indonesia	101° 22' 13.652" E	0° 58' 10.836" N	1,00	1,00	21	No	18 Desember 2023
144	Ponidi	Pencing Bekulo Village, Kandis Sub District, Siak District, Riak Province, Indonesia	101° 21' 20.523" E	0° 58' 15.777" N	1,3	1,3	25	No	18 Desember 2023
145	Raskita Br Ginting	Pencing Bekulo Village, Kandis Sub District, Siak District, Riak Province, Indonesia	101° 22' 21.302" E	0° 57' 44.975" N	2,00	2,00	34	No	18 Desember 2023
146	Rezeki Utami	Pencing Bekulo Village, Kandis Sub District, Siak District, Riak Province, Indonesia	101° 22' 11.352" E	0° 57' 50.415" N	0,5	0,5	10	No	18 Desember 2023
147	Rini Anggraini	Pencing Bekulo Village, Kandis Sub District, Siak District, Riak Province, Indonesia	101° 21' 21.386" E	0° 58' 2.092" N	2,5	2,5	51	No	18 Desember 2023
148	Riswanto	Pencing Bekulo Village, Kandis Sub District, Siak District, Riak Province, Indonesia	101° 20' 49.973" E	0° 57' 53.090" N	1,55	1,55	33	No	18 Desember 2023
149	Ronah Br Aruan	Pencing Bekulo Village, Kandis Sub District, Siak District, Riak Province, Indonesia	101° 20' 43.122" E	0° 57' 59.098" N	2,01	2,01	35	No	18 Desember 2023
150	Sagjok	Pencing Bekulo Village, Kandis Sub District, Siak District, Riak Province, Indonesia	101° 20' 42.794" E	0° 57' 55.668" N	2,00	2,00	30	No	18 Desember 2023
151	Said Dahris	Pencing Bekulo Village, Kandis Sub District, Siak District, Riak Province, Indonesia	101° 22' 8.784" E	0° 57' 53.487" N	1,00	1,00	16	No	18 Desember 2023
152	Said Rizki Ananda	Pencing Bekulo Village, Kandis Sub District, Siak District, Riak Province, Indonesia	101° 21' 54.867" E	0° 57' 56.473" N	2,00	2,00	34	No	18 Desember 2023
153	Salmiah	Pencing Bekulo Village, Kandis Sub District, Siak District, Riak Province, Indonesia	101° 21' 17.674" E	0° 58' 0.070" N	1,00	1,00	20	No	18 Desember 2023
154	Samsul Butar-Butar, S/P	Pencing Bekulo Village, Kandis Sub District, Siak District, Riak Province, Indonesia	101° 22' 0.957" E	0° 58' 12.528" N	2,00	2,00	35	No	18 Desember 2023
155	Sarijok	Pencing Bekulo Village, Kandis Sub District, Siak District, Riak Province, Indonesia	101° 21' 38.570" E	0° 57' 33.391" N	1,92	1,92	32	No	18 Desember 2023
156	Hendri Pratama	Pencing Bekulo Village, Kandis Sub District, Siak District, Riak Province, Indonesia	101° 21' 41.249" E	0° 57' 34.712" N	1,61	1,61	33	No	18 Desember 2023
157	Sri Wahyuni	Pencing Bekulo Village, Kandis Sub District, Siak District, Riak Province, Indonesia	101° 22' 44.605" E	0° 57' 11.468" N	1,33	1,33	27	No	18 Desember 2023
158	Sri Widlaningsih	Pencing Bekulo Village, Kandis Sub District, Siak District, Riak Province, Indonesia	101° 21' 24.616" E	0° 58' 3.921" N	2,00	2,00	35	No	18 Desember 2023

159	Sri Widodo A	Pencing Bekulo Village, Kandis Sub District, Siak District, Riak Province, Indonesia	101° 22' 10.646" E	0° 57' 51.335" N	1,00	1,00	16	No	18 Desember 2023
160	Sri Widodo B	Pencing Bekulo Village, Kandis Sub District, Siak District, Riak Province, Indonesia	101° 22' 53.864" E	0° 55' 36.415" N	2,23	2,23	38	No	18 Desember 2023
161	Sugimo	Pencing Bekulo Village, Kandis Sub District, Siak District, Riak Province, Indonesia	101° 21' 53.913" E	0° 58' 55.220" N	2,00	2,00	36	No	18 Desember 2023
162	Sukemi	Pencing Bekulo Village, Kandis Sub District, Siak District, Riak Province, Indonesia	101° 20' 47.247" E	0° 57' 41.499" N	2,00	2,00	35	No	18 Desember 2023
163	Sunardi A	Pencing Bekulo Village, Kandis Sub District, Siak District, Riak Province, Indonesia	101° 22' 38.599" E	0° 57' 26.808" N	2,00	2,00	35	No	18 Desember 2023
164	Sunardi B	Pencing Bekulo Village, Kandis Sub District, Siak District, Riak Province, Indonesia	101° 22' 37.624" E	0° 57' 25.480" N	2,00	2,00	35	No	18 Desember 2023
165	Suparni	Pencing Bekulo Village, Kandis Sub District, Siak District, Riak Province, Indonesia	101° 22' 35.420" E	0° 57' 19.681" N	1,00	1,00	21	No	18 Desember 2023
166	Supiani	Pencing Bekulo Village, Kandis Sub District, Siak District, Riak Province, Indonesia	101° 21' 3.376" E	0° 58' 3.020" N	1,00	1,00	18	No	18 Desember 2023
167	Suriono	Pencing Bekulo Village, Kandis Sub District, Siak District, Riak Province, Indonesia	101° 22' 13.568" E	0° 58' 33.183" N	2,00	2,00	34	No	18 Desember 2023
168	Suriyadi	Pencing Bekulo Village, Kandis Sub District, Siak District, Riak Province, Indonesia	101° 22' 12.995" E	0° 57' 17.429" N	1,5	1,5	31	No	18 Desember 2023
169	Sutresno	Pencing Bekulo Village, Kandis Sub District, Siak District, Riak Province, Indonesia	101° 22' 15.253" E	0° 57' 48.400" N	2,00	2,00	34	No	18 Desember 2023
170	Tugino A	Pencing Bekulo Village, Kandis Sub District, Siak District, Riak Province, Indonesia	101° 21' 20.352" E	0° 58' 12.373" N	1,89	1,89	34	No	18 Desember 2023
171	Tugino B	Pencing Bekulo Village, Kandis Sub District, Siak District, Riak Province, Indonesia	101° 21' 8.761" E	0° 58' 19.240" N	0,66	0,66	11	No	18 Desember 2023
172	Udin Damanik	Pencing Bekulo Village, Kandis Sub District, Siak District, Riak Province, Indonesia	101° 21' 15.797" E	0° 58' 5.776" N	1,77	1,77	33	No	18 Desember 2023
173	Wagino	Pencing Bekulo Village, Kandis Sub District, Siak District, Riak Province, Indonesia	101° 21' 29.426" E	0° 58' 10.783" N	2,00	2,00	34	No	18 Desember 2023
174	Wagrin. s	Pencing Bekulo Village, Kandis Sub District, Siak District, Riak Province, Indonesia	101° 21' 14.386" E	0° 57' 56.107" N	2,05	2,05	33	No	18 Desember 2023
175	Wagito	Pencing Bekulo Village, Kandis Sub District, Siak District, Riak Province, Indonesia	101° 21' 45.704" E	0° 58' 5.206" N	1,02	1,02	20	No	18 Desember 2023
176	Aminullah	Pencing Bekulo Village, Kandis Sub District, Siak District, Riak Province, Indonesia	101° 21' 46.820" E	0° 58' 56.202" N	1,00	1,00	19	No	18 Desember 2023
177	Suandi Purba	Pencing Bekulo Village, Kandis Sub District, Siak District, Riak Province, Indonesia	101° 22' 21.894" E	0° 58' 2.564" N	1,65	1,65	29	No	18 Desember 2023
178	Nqatiyem	Pencing Bekulo Village, Kandis Sub District, Siak District, Riak Province, Indonesia	101° 22' 20.520" E	0° 58' 0.720" N	1,00	1,00	17	No	18 Desember 2023
179	Sugiono	Pencing Bekulo Village, Kandis Sub District, Siak District, Riak Province, Indonesia	101° 22' 25.796" E	0° 57' 51.122" N	1,00	1,00	14	No	18 Desember 2023
180	Sutrimo	Pencing Bekulo Village, Kandis Sub District, Siak District, Riak Province, Indonesia	101° 22' 26.519" E	0° 57' 52.001" N	1,00	1,00	14	No	18 Desember 2023
181	Nurul Hasni	Pencing Bekulo Village, Kandis Sub District, Siak District, Riak Province, Indonesia	101° 21' 47.943" E	0° 58' 34.174" N	1,00	1,00	19	No	18 Desember 2023
182	Sumarni S	Pencing Bekulo Village, Kandis Sub District, Siak District, Riak Province, Indonesia	101° 22' 28.342" E	0° 57' 59.257" N	1,00	1,00	16	No	18 Desember 2023
183	Tukijan	Pencing Bekulo Village, Kandis Sub District, Siak District, Riak Province, Indonesia	101° 21' 55.236" E	0° 58' 34.976" N	2,00	2,00	37	No	18 Desember 2023
184	Burhan	Pencing Bekulo Village, Kandis Sub District, Siak District, Riak Province, Indonesia	101° 22' 14.748" E	0° 57' 20.208" N	3,00	3,00	59	No	18 Desember 2023
185	Juarni	Pencing Bekulo Village, Kandis Sub District, Siak District, Riak Province, Indonesia	101° 22' 15.866" E	0° 58' 33.784" N	1,00	1,00	17	No	18 Desember 2023
186	Jumiatik	Pencing Bekulo Village, Kandis Sub District, Siak District, Riak Province, Indonesia	101° 22' 0.282" E	0° 57' 54.105" N	1,00	1,00	19	No	18 Desember 2023
187	Minal Amalia	Pencing Bekulo Village, Kandis Sub District, Siak District, Riak Province, Indonesia	101° 22' 15.844" E	0° 57' 13.656" N	1,11	1,11	18	No	18 Desember 2023
188	Halimah	Pencing Bekulo Village, Kandis Sub District, Siak District, Riak Province, Indonesia	101° 22' 27.277" E	0° 57' 52.819" N	1,00	1,00	15	No	18 Desember 2023
<b>TOTAL</b>					315,09	315,09	5,667		

Peta lokasi untuk unit sertifikasi adalah:



Mutuagung Lestari, atau yang disebut juga Mutu Certification International (MUTU), bermula sebagai lembaga inspeksi, laboratorium dan sertifikasi sejak tahun 1990. Merupakan Perusahaan Private Nasional yang didukung oleh sumber daya manusia yang profesional dengan komitmen tinggi serta telah diakui secara Nasional dan Internasional. Sejak Juni 2003, MUTU telah mendapatkan pengakuan dari Menteri Pertanian, Kehutanan dan Perikanan Jepang sebagai Organisasi Sertifikasi Asing yang terdaftar atau Registered Overseas Certification Body (ROCB) yang bertugas memberikan sertifikat terhadap produk yang memenuhi persyaratan Japan Agricultural Standard (JAS), dimana wilayah yang dibawah meliputi Indonesia, Myanmar, Kamboja, Malaysia, Vietnam, Timor Leste, Philipina, Papua Nugini, dan China. Dengan pengakuan ini, MUTU merupakan anggota ROCB pertama di Asia. Komite Akreditasi Nasional (KAN) telah mengakreditasi MUTU sebagai Lembaga sertifikasi Sistem Manajemen Mutu (ISO 9001:2015) dan Lembaga Sertifikasi Sistem Manajemen Lingkungan (ISO 14001:2015). Lembaga Ekolabel Indonesia (LEI) juga telah mengakreditasi MUTU sebagai Lembaga sertifikasi Pengelolaan Hutan Lestari, Lembaga Sertifikasi Indonesian Sustainable Palm Oil (ISPO). Sejak Maret 2014 MUTU telah terakreditasi oleh Accreditation Services International (ASI) sebagai lembaga sertifikasi RSPO.

Tim auditor untuk penilaian sertifikasi akan dipimpin oleh **Rahmat Abdiansyah** dan tim auditor lainnya dari PT Mutuagung Lestari, terdiri dari:

Tim Auditor	Peran Audit	Kualifikasi dan Pengalaman
Rahmat Abdiansyah	Praktik Manajemen Terbaik, dan Keselamatan dan Kesehatan Kerja	Warga negara Indonesia. Sarjana Kehutanan dari IPB University, dengan jurusan Konservasi Sumber Daya Hutan dan Ekowisata. Memiliki pengalaman bekerja di Organisasi Petani Kelapa Sawit Indonesia dan perusahaan perkebunan kelapa sawit swasta Indonesia. Mengikuti pelatihan Auditor Internal ISPO dan RSPO tahun 2018, IHT Sistem Sertifikasi ISPO dan P&C tahun 2019, IHT ISO 19011, Pelatihan Auditor ISPO tahun 2020, Pelatihan Lead Auditor RSPO tahun 2020, Pelatihan Lead Auditor ISO 14001 dan ISO 9001 tahun 2020, dan Sistem Sertifikasi RSPO dan P&C RSPO pada tahun 2019 dan 2020.
Rindu Galih Rezza Rachmansyah	Hukum, Sosial, TBP, Transparansi dan SCCS	Warga Negara Indonesia. Sarjana Pertanian, Jurusan Penyakit dan Hama Tanaman. Memiliki pengalaman satu tahun sebagai Ahli Lapangan di Perusahaan Pestisida dan pengalaman 3 tahun di Pengelolaan Hutan Tanaman Industri, Rehabilitasi Hutan dan Reklamasi pada Badan Usaha Milik Negara Indonesia sebagai Asisten. Pelatihan yang pernah diikuti antara lain Lead Auditor ISO 9001, ISO 14001, ISO 17021, ISO 19011, SA 8000, <i>Lead Auditor</i> ISPO, <i>Lead Auditor</i> RSPO, RaCP & NPP <i>Awareness</i> dan OHSAS 18001:2007. Terlibat dalam beberapa kegiatan audit terkait minyak sawit berkelanjutan sejak tahun 2017 dalam aspek Best Management Practices (BMP), Sosial, Kesehatan dan Keselamatan Pekerja.
Erika Lucitawati	Aspek Lingkungan, GHG, dan Konservasi	Warga Negara Indonesia. Sarjana Teknik, Jurusan Teknik Lingkungan. Pelatihan yang telah diikuti antara lain Pelatihan Lead Auditor ISPO, Pelatihan Lead Auditor RSPO, SA8000, In House Training ISO 19011:2018, ISO 17021:2015, ISO 17065:2012, ISO 9001:2015, ISO 14001:2015, ISO 45001:2018, dan Pelatihan Pengawasan Keselamatan dan Kesehatan Kerja.

Untuk membantu pelaksanaan proses penilaian di lokasi tersebut, PT. Mutuagung Lestari mengundang para pihak untuk memberikan komentar terhadap hal-hal yang menjadi poin penilaian seperti di bawah ini:

- a. Kelestarian lingkungan di sekitar kebun atau pabrik termasuk penggunaan pestisida dan penanganan limbah
- b. Keanekaragaman hayati di sekitar kebun dan pabrik serta lingkungan sekitarnya
- c. Peluang Kerja
- d. Kontribusi perusahaan terhadap pembangunan daerah
- e. Kondisi perumahan, sanitasi, fasilitas dan sarana pendukung pendidikan.
- f. Permasalahan lainnya yang berkaitan dengan sertifikasi.

Komentar akan diterima dalam waktu 30 hari setelah surat ini dikeluarkan untuk kami pertimbangkan dalam proses penilaian. Dan isilah formulir di bawah ini serta lampirkan pada lembaran komentar sebagai data pribadi anda, dan untuk kami melakukan klarifikasi terhadap saran atau komentar yang anda berikan.

Nama : \_\_\_\_\_  
Alamat : \_\_\_\_\_  
Nomor Telepon : \_\_\_\_\_  
Nomor Fax : \_\_\_\_\_

Bila dalam memberikan komentar data pribadi anda tidak ingin dipublikasikan. Anda dapat menuliskan kata 'RAHASIA' dalam surat komentar anda. Silahkan kirimkan komentar anda kepada :

**PT MUTUAGUNG LESTARI****Leonada****Operations Manager**

Jl. Raya Bogor Km. 33,5 No. 19  
Cimanggis, Depok - Indonesia 16953  
Telp. (+62-21) 8740202  
Fax. (+62-21) 87740745/46  
[agri@mutucertification.com](mailto:agri@mutucertification.com)  
web : [www.mutucertification.com](http://www.mutucertification.com)

**Koperasi Makmur Barokah Belutu****Asmungi****Manager ICS**

Desa Belutu, Kecamatan Kandis, Kabupaten Siak, Provinsi  
Riau  
(+62 ) 813 7892 8731  
-

Kami ucapkan terima kasih atas segala komentar yang anda berikan.

Hormat kami,



**Irham Budiman**  
Direktur PT Mutuagung Lestari