

Date: 10 January 2024

Notification of RSPO Recertification of Sungai Buaya POM PT Sumber Indah Perkasa subsidiary of Golden Agri Resources Ltd (RSPO Membership 1-0096-11-000-00, 31 March 2011)

Dear Stakeholders,

Golden Agri Resources has applied to Mutuagung Lestari and will conduct Recertification at PT Sumber Indah Perkasa with scope Sungai Buaya POM and its supply based, located at Talang Batu Village, Mesuji Timur Sub District, Mesuji District, Lampung Province, Indonesia against the requirement of Indonesia National Interpretation of the RSPO Principles and Criteria for the Production of Sustainable Palm Oil 2018 (INANI 2020).

Sungai Buaya POM – PT Sumber Indah Perkasa has successfully been registered in the Palm Trace IT platform with member RSPO_PO1000001342. The organization is a member of RSPO and has been taking an active role in the RSPO certification processes and planned to maintain RSPO Sustainable Palm Oil requirement for all of its production. Mutuagung Lestari has arranged to conduct the assessment to the organization which operating 1 (one) palm oil mill, 3 (three) estates on **19 February to 23 February 2024**.

Information on production data of Mill and estates to be assessed are as follows:

| Name of Mill | Location | GPS Reference | | Mill Capacity (Tonnes/hour) | Annual Volume | |
|-------------------|--|---------------|----------------|-----------------------------|--------------------------|-------------------------|
| | | Latitude | Longitude | | CPO Output (Tonnes/year) | PK Output (Tonnes/year) |
| Sungai Buaya Mill | Talang Batu Village, Mesuji Timur Sub District, Mesuji District, Lampung Province, Indonesia | S 4° 7' 43" | E 105° 26' 20" | 90 | 49,087.500 | 13,879.092 |

*Sources: Data Production period of 12 months

| Name of Estate | Location | GPS Reference | | Total Area (Ha) | Production Area (Ha) | FFB Production (tonnes/year) |
|----------------------|---|-----------------|----------------|------------------|----------------------|------------------------------|
| | | Latitude | Longitude | | | |
| Sungai Buaya Estate | Talang Batu Village, Mesuji Timur Sub District, Mesuji District, Lampung Province, Indonesia | S 4° 9' 41" | E 105° 26' 18" | 5,114.39 | 3,674.11 | 60,249.040. |
| KKPA Gedung Aji Lama | Paduan Rajawali Village, Meraksa Aji Sub District, Bawang District, Lampung Province, Indonesia | S 4° 17' 24" LS | E 105° 25' 55" | 5,006.70 | 5,002.00 | 55,714.940 |
| KKPA Mesuji | Brabasan Village, Tanjung Raya Sub District, Mesuji District, Lampung Province, Indonesia | S 3° 58' 41" | E 105° 20' 51" | 5,191.01 | 5,187.26 | 135,411.740 |
| Total | | | | 15,312.10 | 13,863.37 | 191,126.68 |

**Sources: Data Production period of 12 months*

Established in 1996, GAR now has operations across 14 countries, and our products are delivered to around 100 countries worldwide, including China, India and the USA as well as various destinations in Europe and the Middle East. GAR was listed on the Singapore Exchange in 1999.

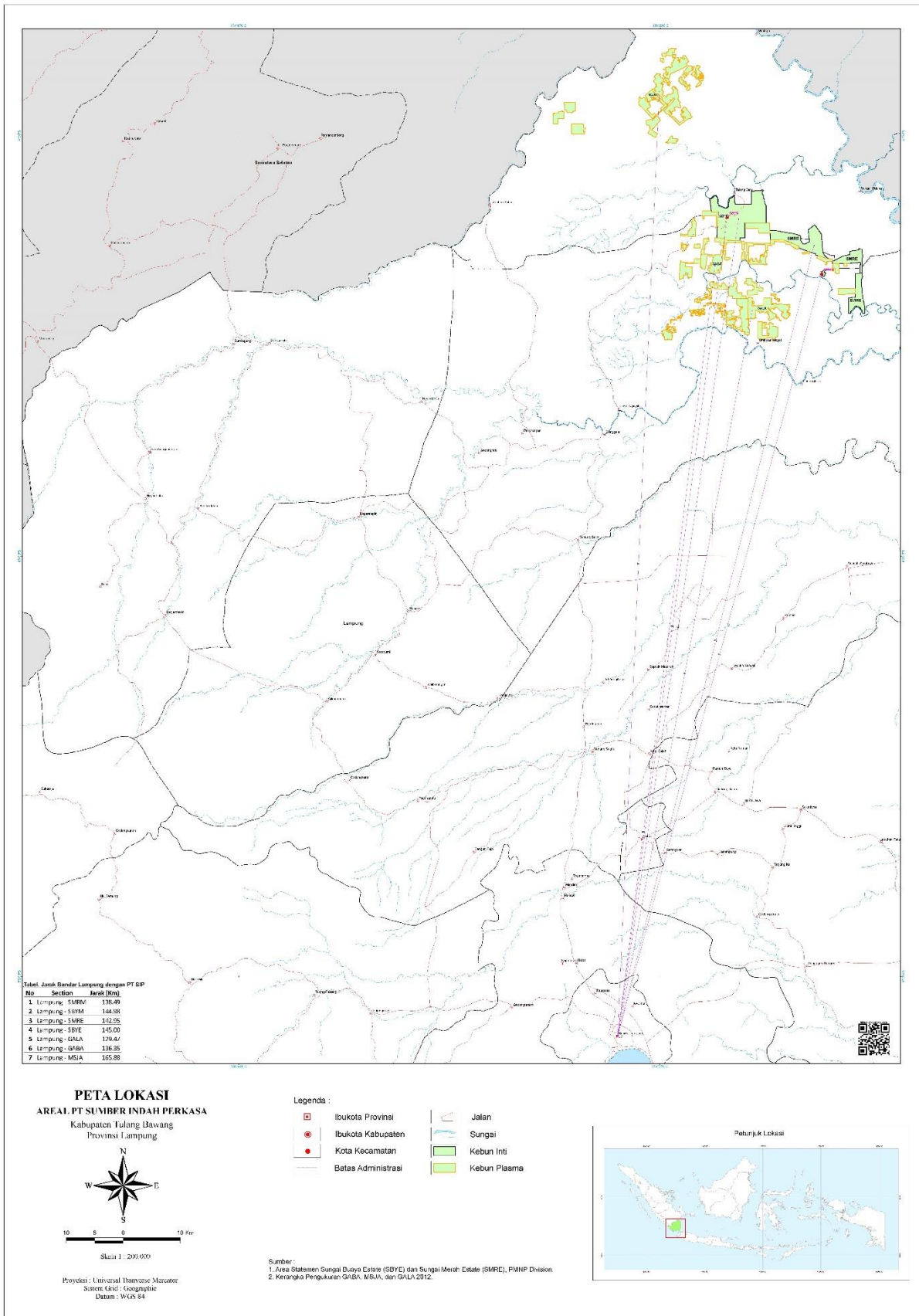
GAR is a global leader in palm oil production, producing more than 2.43 million tonnes of crude palm oil (CPO) in 2022. We manage about 538,000 hectares of plantations, including smallholder farms, across Indonesia. Our downstream refining and specialty product facilities manufacture high-quality products for the global agronomy, food, oleochemical, and bioenergy markets. We have also launched a sugar storage and distribution business to leverage our shipping and logistics capabilities.

The sheer scale and vertically integrated nature of our operations enable our team of over 100,000 people to ensure efficiency, quality and sustainability across our supply chain. Our operations are innovation-driven and sustainability led, to ensure that GAR remains a global leader in sustainable palm oil production and your partner of choice.

GAR is at forefront of agronomy and technology thanks to our focus and investment in R&D. We have also been expanding our downstream capacity. GAR has cultivated a global, diversified customer base through strong distribution, branding, merchandising, destination processing, shipping and logistics.

With great palm oil production comes great corporate social responsibility. GAR is on track to hit our target to become 100 percent Traceable to Plantation (TTP) by achieving full TTP for around 98 percent of palm supply chain at the end of 2022. 100 percent of our plantations have social and community development programmes in place. We have also set aside 79,900 hectares for conservation.

Location maps of the unit certifications are:



PT Mutuagung Lestari, is also known Mutu Certification International (MUTU), and has started as inspection, laboratory, and Certification body since 1990. As a private national company and supported with highly committed professionals, MUTU has gained recognition nationally and internationally. Since June 2003, MUTU has received recognition from the Ministry of Agriculture, Forestry, and Fishery of Japan (MAFF) as registered overseas certification body (ROCB). MUTU certify and mark products with Japan agriculture standard (JAS) covering Indonesia, Myanmar, Cambodia, Malaysia, Vietnam, Timor Leste, Philippines, Papua New Guinea and China. MUTU is the first ROCB in Asia. National Accreditation Committee has accredited MUTU as Quality Management System certification body (ISO 9001:2015) and Environmental Management System certification body (ISO 14001:2015). Indonesia Ecolabelling Institute (LEI) has also accredited MUTU as Sustainable Forest Management System certification body, Certification Body of Indonesian Sustainable Palm Oil (ISPO), Since March 2014, MUTU has been accredited by ASI (Accreditation Services International) as a RSPO certification body.

The auditor team for the certification assessment will be led of **Kiki Fadli** and other team auditor from PT Mutuagung Lestari, consist of:

| Audit Team | Role/ Area of Requirement | Qualification and Experience |
|-------------------------|---|--|
| Kiki Fadli | Best Management Practice and OHS, Legal, Social, and SCCS Aspects | Bachelor of Agricultural Engineering, Agricultural Engineering Study Program. Has experience working in the sustainability department in private and state-owned oil palm plantations. Has attended training on Lead Auditor ISPO, Lead Auditor RSPO, General OHS Expert, ISO 9001:2008, ISO 14001:2015, ISO 17021, ISO 17065, HCV, SMK3, RSPO SCCS Training. During this assessment, He verified Best Management Practice and OHS, Legal, Social, and SCCS Aspects. |
| Erika Lucitawati | Environment, HCV, Social, and GHG Aspects | Indonesian citizen. Bachelor of Engineering with major in Environmental Engineering. The trainings that have been attended include ISPO Lead Auditor Training, RSPO Lead Auditor Training, Awareness SA8000, In House Training of ISO 19011: 2018, ISO 17021: 2015, ISO 17065: 2012, ISO 9001: 2015, ISO 14001: 2015, ISO 45001: 2018, and The Supervision of Occupational Health and Safety Training. During this assessment, she verified environmental, GHG, and conservation aspects. |
| Septian Maulana | Worker Welfare and Transparency aspects. | Indonesian Citizen, Bachelor of Economic, Pamulang University. Have experience as sustainability staff on oil palm plantation. Training have been followed including Occupational Health and Safety Expert Candidate certification by Ministry of Manpower and Transmigration of Indonesia; Basic Fire Fighting and Basic First Aid; Awareness Integrated Management Systems (ISO 14001, and ISO 45001 in 2020); Awareness (ISO 19011, ISO 17065; and ISO 17021) in 2020; ISO 9001:2015 Lead Auditor in 2021, ISPO Lead Auditor in 2021, RSPO Lead Auditor in 2021 and Completed Awareness Social Audit SMETA in 2022. |

PT Mutuagung Lestari invites stakeholders to provide comments (if any) on any of the following matters related to the site for assessment:

- a. Environmental protection within the estate or mill including use of pesticide and waste management.
- b. Biodiversity within the estate and mill
- c. Contribution for local development and opportunities for employment
- d. Provision of housing, sanitation, facility and education support
- e. Other issues related with the assessment

Comments accepted within 30 days from the date of this latter will be considered in the certification assessment. Please include the following details in case we may need to contact for your clarification on any issued raised.

Name : _____

Address : _____
Telephone : _____
Fax : _____

If you wish your comments to be treated confidentiality or remain anonymous, please mark your reply 'CONFIDENTIAL'. Please send your comments to:

PT MUTUAGUNG LESTARI

Leonada

Operations Manager

Jl. Raya Bogor Km. 33,5 No. 19
Cimanggis, Depok – Indonesia 16953
Telp. (+62-21) 8740202
Fax. (+62-21) 87740745/46
agri@mutucertification.com
web : www.mutucertification.com

Sungai Buaya POM PT Sumber Indah Perkasa

Yahya Mustakim

**Head of Sustainability Management System and
Certification Operations Sustainability**

Sinar Mas Plaza, Tower II, 30th Floor Jl.MH Thamrin No.51,
Jakarta 10350, Indonesia
Telp. (+62-21) - 50338899
Fax. (+62-21) - 50338899
yahya.mustakim@sinar-mas-agri.com
web : <http://www.goldenagri.com.sg>

Thank you for your comments and feedback.

Yours faithfully,



mutu
international

Irham Budiman

Director

PT Mutuagung Lestari