

Date: 17 July 2023

Notification of RSPO Independent Smallholders Standard Initial Certification MS-B of Perkumpulan Sejahtera Pelita Nusantara (RSPO Membership Number: 1-0448-23-000-00, 25 May 2023)

Dear Stakeholders,

Perkumpulan Sejahtera Pelita Nusantara has applied to Mutuagung Lestari and will conduct Initial Certification (MS-B), located at Seureuke Village, Langkahan Sub District, Aceh Utara District, Aceh Province, Indonesia against the requirement of RSPO Independent Smallholder Standard, Indonesia National Interpretation for the Production of Sustainable Palm Oil 2020, endorsed by the RSPO Board of Governors on 14 February 2022.

Perkumpulan Sejahtera Pelita Nusantara has been registered on PalmTrace IT platform with member ID RSPO_PO1000015696. Mutuagung Lestari has arranged to conduct the assessment to Perkumpulan Petani Swadaya Bangka Lestari on **28 to 31 August 2023**.

| Name of Group Manager | Group Manager Address | ISH Group Location | GPS Reference | |
|-----------------------|---|---|----------------|-----------------|
| | | | Latitude | Longitude |
| Sudikan | Jalan Exxon MOI Blok A, Seureuke Village, Langkahan Sub District, Aceh Utara District, Aceh Province, Indonesia | Jalan Exxon MOI Blok A, Seureuke Village, Langkahan Sub District, Aceh Utara District, Aceh Province, Indonesia | N 4° 52' 28.4" | E 97° 27' 02.3" |

Perkumpulan Sejahtera Pelita Nusantara is a group of oil palm farmers based in Indonesia with the goal and understanding to achieve sustainability

List of Group Members Petani Koltiva

| No | Name of Farmer | Location | GPS Reference | | Area Summary (Ha) | | Forecasted Annual FFB Production (MT) | Any Liabilities? Yes/No | Date of Join on the Group |
|----|-------------------|---|------------------|-------------------|----------------------|--------------|---------------------------------------|-------------------------|---------------------------|
| | | | Latitude | Longitude | Total Certified Area | Planted Area | | | |
| 1 | Abdul Azis | Seureuke Village, Langkahan Sub District, Aceh Utara District, Aceh Province, Indonesia | 4° 53' 52.136" N | 97° 25' 9.142" E | 2 | 2 | 0 | No | 05 October 2022 |
| 2 | Abdurrahman | Seureuke Village, Langkahan Sub District, Aceh Utara District, Aceh Province, Indonesia | 4° 53' 20.367" N | 97° 26' 33.810" E | 2 | 2 | 34 | No | 01 October 2022 |
| | | Seureuke Village, Langkahan Sub District, Aceh Utara District, Aceh Province, Indonesia | 4° 52' 20.374" N | 97° 25' 42.111" E | 0.4 | 0.4 | 8 | No | 01 October 2022 |
| | | Seureuke Village, Langkahan Sub District, Aceh Utara District, Aceh Province, Indonesia | 4° 53' 14.465" N | 97° 26' 14.296" E | 2 | 2 | 0 | No | 01 October 2022 |
| | | Seureuke Village, Langkahan Sub District, Aceh Utara District, Aceh Province, Indonesia | 4° 53' 3.773" N | 97° 26' 14.260" E | 2 | 2 | 0 | No | 01 October 2022 |
| 3 | Abdurrahman | Seureuke Village, Langkahan Sub District, Aceh Utara District, Aceh Province, Indonesia | 4° 53' 3.773" N | 97° 26' 14.260" E | 2 | 2 | 0 | No | 01 October 2022 |
| | | Seureuke Village, Langkahan Sub District, Aceh Utara District, Aceh Province, Indonesia | 4° 53' 36.677" N | 97° 24' 59.989" E | 2 | 2 | 0 | No | 01 October 2022 |
| 4 | Ageng Praseta Aji | Seureuke Village, Langkahan Sub District, Aceh Utara District, Aceh Province, Indonesia | 4° 53' 36.677" N | 97° 24' 59.989" E | 2 | 2 | 0 | No | 01 October 2022 |
| | | Seureuke Village, Langkahan Sub District, Aceh Utara District, Aceh Province, Indonesia | 4° 54' 44.321" N | 97° 26' 1.976" E | 2 | 2 | 0 | No | 01 October 2022 |
| 5 | Ahmad Ghufriani | Seureuke Village, Langkahan Sub District, Aceh Utara District, Aceh Province, Indonesia | 4° 54' 22.306" N | 97° 25' 12.286" E | 2 | 2 | 32 | No | 03 October 2022 |
| 6 | Ahmad Hidayat | Seureuke Village, Langkahan Sub District, Aceh Utara District, Aceh Province, Indonesia | 4° 55' 4.170" N | 97° 25' 56.235" E | 2 | 2 | 0 | No | 01 October 2022 |
| | | Seureuke Village, Langkahan Sub District, Aceh Utara District, Aceh Province, Indonesia | 4° 53' 13.436" N | 97° 26' 3.569" E | 2 | 2 | 32 | No | 01 October 2022 |
| 7 | Ahmad Junarto | Seureuke Village, Langkahan Sub District, Aceh Utara District, Aceh Province, Indonesia | 4° 51' 44.043" N | 97° 26' 2.484" E | 2 | 2 | 0 | No | 05 October 2022 |
| | | Seureuke Village, Langkahan Sub District, Aceh Utara District, Aceh Province, Indonesia | 4° 51' 59.334" N | 97° 26' 15.894" E | 1 | 1 | 10.2 | No | 05 October 2022 |
| | | Seureuke Village, Langkahan Sub District, Aceh Utara District, Aceh Province, Indonesia | 4° 51' 58.328" N | 97° 26' 18.835" E | 1 | 1 | 18.4 | No | 05 October 2022 |
| | | Seureuke Village, Langkahan Sub District, Aceh Utara District, Aceh Province, Indonesia | 4° 51' 57.913" N | 97° 26' 21.225" E | 0.43 | 0.43 | 8.3 | No | 05 October 2022 |
| 8 | Alifah | Seureuke Village, Langkahan Sub District, Aceh Utara District, Aceh Province, Indonesia | 4° 51' 44.223" N | 97° 25' 53.255" E | 1 | 1 | 16 | No | 01 October 2022 |
| 9 | Ali Mustafa | Seureuke Village, Langkahan Sub District, Aceh Utara District, Aceh Province, Indonesia | 4° 52' 56.529" N | 97° 26' 10.085" E | 2 | 2 | 12.75 | No | 03 October 2022 |
| 10 | Alimin | Seureuke Village, Langkahan Sub District, Aceh Utara District, Aceh Province, Indonesia | 4° 51' 50.035" N | 97° 25' 18.661" E | 1 | 1 | 20.8 | No | 03 October 2022 |
| 11 | Anam Ashari | Seureuke Village, Langkahan Sub District, Aceh Utara District, Aceh Province, Indonesia | 4° 53' 2.825" N | 97° 25' 49.932" E | 1 | 1 | 19.8 | No | 06 October 2022 |
| | | Seureuke Village, Langkahan Sub District, Aceh Utara District, Aceh Province, Indonesia | 4° 53' 5.271" N | 97° 25' 51.807" E | 1 | 1 | 19.8 | No | 06 October 2022 |
| 12 | Andi | Seureuke Village, Langkahan Sub District, Aceh Utara District, Aceh Province, Indonesia | 4° 52' 13.152" N | 97° 25' 45.563" E | 1 | 1 | 17 | No | 03 October 2022 |
| 13 | Andi Suryandi | Seureuke Village, Langkahan Sub District, Aceh Utara District, Aceh Province, Indonesia | 4° 54' 11.693" N | 97° 25' 29.402" E | 2 | 2 | 31 | No | 01 October 2022 |
| | | Seureuke Village, Langkahan Sub District, Aceh Utara District, Aceh Province, Indonesia | 4° 55' 9.169" N | 97° 25' 39.999" E | 0.67 | 0.67 | 9.4 | No | 01 October 2022 |
| 14 | Arbianto | Seureuke Village, Langkahan Sub District, Aceh Utara District, Aceh Province, Indonesia | 4° 53' 15.839" N | 97° 26' 6.390" E | 2 | 2 | 0 | No | 03 October 2022 |
| 15 | Ari Pradana Putra | Seureuke Village, Langkahan Sub District, Aceh Utara District, Aceh Province, Indonesia | 4° 52' 45.290" N | 97° 26' 16.882" E | 2 | 2 | 6 | No | 01 October 2022 |
| 16 | Arifin | Seureuke Village, Langkahan Sub District, Aceh Utara District, Aceh Province, Indonesia | 4° 53' 43.734" N | 97° 26' 31.720" E | 2 | 2 | 0 | No | 03 October 2022 |
| | | Seureuke Village, Langkahan Sub District, Aceh Utara District, Aceh Province, Indonesia | 4° 54' 11.715" N | 97° 26' 21.256" E | 2 | 2 | 0 | No | 03 October 2022 |
| 17 | Ashadi | Seureuke Village, Langkahan Sub District, Aceh Utara District, Aceh Province, Indonesia | 4° 52' 5.966" N | 97° 26' 44.347" E | 0.91 | 0.91 | 15.6 | No | 01 October 2022 |
| 18 | Ashari | Seureuke Village, Langkahan Sub District, Aceh Utara District, Aceh Province, Indonesia | 4° 54' 38.155" N | 97° 26' 1.860" E | 2 | 2 | 24.4 | No | 01 October 2022 |
| 19 | Asri | Seureuke Village, Langkahan Sub District, Aceh Utara District, Aceh Province, Indonesia | 4° 53' 18.474" N | 97° 26' 8.550" E | 2 | 2 | 0 | No | 01 October 2022 |
| 20 | Asri | Seureuke Village, Langkahan Sub District, Aceh Utara District, Aceh Province, Indonesia | 4° 53' 16.566" N | 97° 26' 54.585" E | 0.76 | 0.76 | 11.25 | No | 03 October 2022 |
| | | Seureuke Village, Langkahan Sub District, Aceh Utara District, Aceh Province, Indonesia | 4° 54' 50.597" N | 97° 25' 58.657" E | 2 | 2 | 0 | No | 03 October 2022 |
| | | Seureuke Village, Langkahan Sub District, Aceh Utara District, Aceh Province, Indonesia | 4° 55' 6.215" N | 97° 25' 51.051" E | 2 | 2 | 0 | No | 03 October 2022 |
| | | Seureuke Village, Langkahan Sub District, Aceh Utara District, Aceh Province, Indonesia | 4° 54' 44.639" N | 97° 26' 5.681" E | 2 | 2 | 0 | No | 03 October 2022 |
| 21 | Awan Suryanto | Seureuke Village, Langkahan Sub District, Aceh Utara District, Aceh Province, Indonesia | 4° 53' 50.450" N | 97° 25' 30.796" E | 2 | 2 | 28 | No | 05 October 2022 |
| | | Seureuke Village, Langkahan Sub District, Aceh Utara District, Aceh Province, Indonesia | 4° 53' 47.073" N | 97° 25' 32.186" E | 2 | 2 | 22.4 | No | 05 October 2022 |
| 22 | Badri Astuti | Seureuke Village, Langkahan Sub District, Aceh Utara District, Aceh Province, Indonesia | 4° 54' 10.976" N | 97° 25' 13.290" E | 2 | 2 | 32 | No | 03 October 2022 |
| 23 | Bambang Hariamin | Seureuke Village, Langkahan Sub District, Aceh Utara District, Aceh Province, Indonesia | 4° 54' 32.041" N | 97° 25' 51.631" E | 2 | 2 | 30.4 | No | 03 October 2022 |
| | | Seureuke Village, Langkahan Sub District, Aceh Utara District, Aceh Province, Indonesia | 4° 54' 19.301" N | 97° 26' 19.362" E | 2 | 2 | 0 | No | 03 October 2022 |
| 24 | Bambang Susanto | Seureuke Village, Langkahan Sub District, Aceh Utara District, Aceh Province, Indonesia | 4° 52' 4.481" N | 97° 25' 49.995" E | 0.9118 | 0.9118 | 21.2 | No | 05 October 2022 |
| | | Seureuke Village, Langkahan Sub District, Aceh Utara District, Aceh Province, Indonesia | 4° 52' 4.082" N | 97° 25' 47.058" E | 1 | 1 | 16.3 | No | 05 October 2022 |
| | | Seureuke Village, Langkahan Sub District, Aceh Utara District, Aceh Province, Indonesia | 4° 52' 4.318" N | 97° 25' 52.723" E | 0.79 | 0.79 | 12.4 | No | 05 October 2022 |
| 25 | Bambang Subtyo | Seureuke Village, Langkahan Sub District, Aceh Utara District, Aceh Province, Indonesia | 4° 53' 6.543" N | 97° 26' 11.575" E | 2 | 2 | 21.75 | No | 01 October 2022 |
| 26 | Budi | Seureuke Village, Langkahan Sub District, Aceh Utara District, Aceh Province, Indonesia | 4° 54' 17.981" N | 97° 25' 27.808" E | 2 | 2 | 32.6 | No | 05 October 2022 |
| 27 | Budi Anto | Seureuke Village, Langkahan Sub District, Aceh Utara District, Aceh Province, Indonesia | 4° 54' 44.786" N | 97° 26' 15.617" E | 2 | 2 | 0 | No | 01 October 2022 |
| 28 | Cuok Sutarno | Seureuke Village, Langkahan Sub District, Aceh Utara District, Aceh Province, Indonesia | 4° 53' 52.381" N | 97° 25' 12.532" E | 2 | 2 | 0 | No | 05 October 2022 |
| | | Seureuke Village, Langkahan Sub District, Aceh Utara District, Aceh Province, Indonesia | 4° 52' 46.232" N | 97° 26' 11.105" E | 2 | 2 | 23.2 | No | 05 October 2022 |
| | | Seureuke Village, Langkahan Sub District, Aceh Utara District, Aceh Province, Indonesia | 4° 53' 28.643" N | 97° 26' 32.679" E | 2 | 2 | 0 | No | 05 October 2022 |
| | | Seureuke Village, Langkahan Sub District, Aceh Utara District, Aceh Province, Indonesia | 4° 53' 12.339" N | 97° 26' 11.462" E | 2 | 2 | 0 | No | 05 October 2022 |
| | | Seureuke Village, Langkahan Sub District, Aceh Utara District, Aceh Province, Indonesia | 4° 54' 7.851" N | 97° 25' 17.463" E | 2 | 2 | 0 | No | 05 October 2022 |
| | | Seureuke Village, Langkahan Sub District, Aceh Utara District, Aceh Province, Indonesia | 4° 54' 26.751" N | 97° 26' 9.183" E | 2 | 2 | 0 | No | 05 October 2022 |
| | | Seureuke Village, Langkahan Sub District, Aceh Utara District, Aceh Province, Indonesia | 4° 53' 1.511" N | 97° 25' 41.057" E | 2 | 2 | 34.5 | No | 05 October 2022 |
| 29 | Darmaji | Seureuke Village, Langkahan Sub District, Aceh Utara District, Aceh Province, Indonesia | 4° 54' 7.162" N | 97° 25' 27.757" E | 0.75 | 0.75 | 18.2 | No | 03 October 2022 |
| 30 | Daryono | Seureuke Village, Langkahan Sub District, Aceh Utara District, Aceh Province, Indonesia | 4° 54' 19.823" N | 97° 26' 0.840" E | 2 | 2 | 24 | No | 03 October 2022 |
| 31 | Dewi | Seureuke Village, Langkahan Sub District, Aceh Utara District, Aceh Province, Indonesia | 4° 51' 38.338" N | 97° 27' 25.844" E | 2 | 2 | 27.35 | No | 03 October 2022 |

| | | | | | | | | | |
|----|----------------------|---|------------------|-------------------|--------|--------|-------|----|-----------------|
| 32 | Dwi Iswahyudi | Seureuke Village, Langkahan Sub District, Aceh Utara District, Aceh Province, Indonesia | 4° 54' 20.150" N | 97° 26' 9.944" E | 2 | 2 | 34 | No | 01 October 2022 |
| 33 | Dyah Ruliani | Seureuke Village, Langkahan Sub District, Aceh Utara District, Aceh Province, Indonesia | 4° 52' 27.655" N | 97° 26' 14.815" E | 1 | 1 | 17.6 | No | 01 October 2022 |
| 34 | Edi Karyawanto | Seureuke Village, Langkahan Sub District, Aceh Utara District, Aceh Province, Indonesia | 4° 54' 13.240" N | 97° 26' 16.481" E | 2 | 2 | 26.2 | No | 05 October 2022 |
| | | Seureuke Village, Langkahan Sub District, Aceh Utara District, Aceh Province, Indonesia | 4° 54' 6.936" N | 97° 25' 58.747" E | 2 | 2 | 0 | No | 05 October 2022 |
| | | Seureuke Village, Langkahan Sub District, Aceh Utara District, Aceh Province, Indonesia | 4° 54' 6.938" N | 97° 25' 56.604" E | 2 | 2 | 0 | No | 05 October 2022 |
| | | Seureuke Village, Langkahan Sub District, Aceh Utara District, Aceh Province, Indonesia | 4° 54' 6.774" N | 97° 26' 1.185" E | 2 | 2 | 0 | No | 05 October 2022 |
| | | Seureuke Village, Langkahan Sub District, Aceh Utara District, Aceh Province, Indonesia | 4° 53' 30.858" N | 97° 25' 28.008" E | 2 | 2 | 34 | No | 05 October 2022 |
| | | Seureuke Village, Langkahan Sub District, Aceh Utara District, Aceh Province, Indonesia | 4° 53' 3.187" N | 97° 26' 5.674" E | 2 | 2 | 0 | No | 05 October 2022 |
| | | Seureuke Village, Langkahan Sub District, Aceh Utara District, Aceh Province, Indonesia | 4° 54' 20.162" N | 97° 26' 16.461" E | 2 | 2 | 0 | No | 05 October 2022 |
| 35 | Edi Maksun | Seureuke Village, Langkahan Sub District, Aceh Utara District, Aceh Province, Indonesia | 4° 51' 55.313" N | 97° 26' 39.747" E | 1 | 1 | 23.4 | No | 01 October 2022 |
| 36 | Edi Mulya Beti A.Md. | Seureuke Village, Langkahan Sub District, Aceh Utara District, Aceh Province, Indonesia | 4° 52' 30.578" N | 97° 26' 48.780" E | 1 | 1 | 20 | No | 03 October 2022 |
| | | Seureuke Village, Langkahan Sub District, Aceh Utara District, Aceh Province, Indonesia | 4° 52' 30.942" N | 97° 26' 47.150" E | 1 | 1 | 24 | No | 03 October 2022 |
| | | Seureuke Village, Langkahan Sub District, Aceh Utara District, Aceh Province, Indonesia | 4° 52' 31.284" N | 97° 26' 45.487" E | 1 | 1 | 24 | No | 03 October 2022 |
| | | Seureuke Village, Langkahan Sub District, Aceh Utara District, Aceh Province, Indonesia | 4° 51' 41.294" N | 97° 26' 27.680" E | 2 | 2 | 32 | No | 03 October 2022 |
| 37 | Edi Supriadi | Seureuke Village, Langkahan Sub District, Aceh Utara District, Aceh Province, Indonesia | 4° 54' 50.770" N | 97° 26' 12.004" E | 2 | 2 | 33.2 | No | 05 October 2022 |
| 38 | Edi Triyoko | Seureuke Village, Langkahan Sub District, Aceh Utara District, Aceh Province, Indonesia | 4° 54' 44.583" N | 97° 25' 52.207" E | 2 | 2 | 34.8 | No | 01 October 2022 |
| 39 | Etendi Julian | Seureuke Village, Langkahan Sub District, Aceh Utara District, Aceh Province, Indonesia | 4° 53' 7.968" N | 97° 25' 57.734" E | 0.4 | 0.4 | 4.8 | No | 03 October 2022 |
| 40 | Eka Savrika Manurung | Seureuke Village, Langkahan Sub District, Aceh Utara District, Aceh Province, Indonesia | 4° 52' 9.003" N | 97° 26' 31.320" E | 0.91 | 0.91 | 18.7 | No | 05 October 2022 |
| 41 | Eko Sasongko | Seureuke Village, Langkahan Sub District, Aceh Utara District, Aceh Province, Indonesia | 4° 52' 57.489" N | 97° 25' 34.639" E | 1 | 1 | 15.6 | No | 01 October 2022 |
| 42 | Eko Susanto | Seureuke Village, Langkahan Sub District, Aceh Utara District, Aceh Province, Indonesia | 4° 53' 33.814" N | 97° 26' 19.797" E | 2 | 2 | 36.8 | No | 03 October 2022 |
| | | Seureuke Village, Langkahan Sub District, Aceh Utara District, Aceh Province, Indonesia | 4° 54' 38.570" N | 97° 26' 8.276" E | 2 | 2 | 0 | No | 03 October 2022 |
| | | Seureuke Village, Langkahan Sub District, Aceh Utara District, Aceh Province, Indonesia | 4° 54' 50.569" N | 97° 26' 2.008" E | 2 | 2 | 0 | No | 03 October 2022 |
| | | Seureuke Village, Langkahan Sub District, Aceh Utara District, Aceh Province, Indonesia | 4° 54' 15.465" N | 97° 25' 11.326" E | 2 | 2 | 32 | No | 03 October 2022 |
| | | Seureuke Village, Langkahan Sub District, Aceh Utara District, Aceh Province, Indonesia | 4° 53' 8.704" N | 97° 25' 30.846" E | 1 | 1 | 23.2 | No | 03 October 2022 |
| 43 | Endi Triadi | Seureuke Village, Langkahan Sub District, Aceh Utara District, Aceh Province, Indonesia | 4° 53' 50.031" N | 97° 25' 17.967" E | 2 | 2 | 29.2 | No | 10 October 2022 |
| | | Seureuke Village, Langkahan Sub District, Aceh Utara District, Aceh Province, Indonesia | 4° 54' 2.949" N | 97° 25' 18.936" E | 2 | 2 | 22.8 | No | 10 October 2022 |
| | | Seureuke Village, Langkahan Sub District, Aceh Utara District, Aceh Province, Indonesia | 4° 54' 4.328" N | 97° 25' 13.412" E | 2 | 2 | 0 | No | 10 October 2022 |
| | | Seureuke Village, Langkahan Sub District, Aceh Utara District, Aceh Province, Indonesia | 4° 54' 11.237" N | 97° 25' 17.937" E | 2 | 2 | 0 | No | 10 October 2022 |
| 44 | Erfan | Seureuke Village, Langkahan Sub District, Aceh Utara District, Aceh Province, Indonesia | 4° 52' 17.796" N | 97° 27' 9.744" E | 0.9 | 0.9 | 11.8 | No | 01 October 2022 |
| 45 | Erwin Mustofa S.P. | Seureuke Village, Langkahan Sub District, Aceh Utara District, Aceh Province, Indonesia | 4° 53' 22.691" N | 97° 27' 21.756" E | 0.8 | 0.8 | 14 | No | 01 October 2022 |
| | | Seureuke Village, Langkahan Sub District, Aceh Utara District, Aceh Province, Indonesia | 4° 53' 22.074" N | 97° 27' 18.744" E | 1 | 1 | 24 | No | 01 October 2022 |
| 46 | Etik Indriyani | Seureuke Village, Langkahan Sub District, Aceh Utara District, Aceh Province, Indonesia | 4° 51' 56.757" N | 97° 27' 6.227" E | 1 | 1 | 17.25 | No | 10 October 2022 |
| | | Seureuke Village, Langkahan Sub District, Aceh Utara District, Aceh Province, Indonesia | 4° 51' 24.245" N | 97° 25' 30.211" E | 1 | 1 | 18.2 | No | 10 October 2022 |
| 47 | Evi Susanti | Seureuke Village, Langkahan Sub District, Aceh Utara District, Aceh Province, Indonesia | 4° 54' 57.488" N | 97° 25' 55.797" E | 2 | 2 | 24.8 | No | 03 October 2022 |
| 48 | Falmawati | Seureuke Village, Langkahan Sub District, Aceh Utara District, Aceh Province, Indonesia | 4° 53' 4.970" N | 97° 26' 37.677" E | 2 | 2 | 0 | No | 05 October 2022 |
| 49 | Febi Suryani | Seureuke Village, Langkahan Sub District, Aceh Utara District, Aceh Province, Indonesia | 4° 53' 22.421" N | 97° 26' 36.176" E | 2 | 2 | 0 | No | 10 October 2022 |
| 50 | Feri Inwansyah | Seureuke Village, Langkahan Sub District, Aceh Utara District, Aceh Province, Indonesia | 4° 51' 56.621" N | 97° 25' 33.119" E | 1 | 1 | 19.2 | No | 10 October 2022 |
| 51 | Fherdi Priata K | Seureuke Village, Langkahan Sub District, Aceh Utara District, Aceh Province, Indonesia | 4° 52' 11.265" N | 97° 27' 8.358" E | 1 | 1 | 0 | No | 05 October 2022 |
| 52 | Firmanb | Seureuke Village, Langkahan Sub District, Aceh Utara District, Aceh Province, Indonesia | 4° 54' 50.196" N | 97° 25' 34.815" E | 0.8752 | 0.8752 | 18 | No | 05 October 2022 |
| | | Seureuke Village, Langkahan Sub District, Aceh Utara District, Aceh Province, Indonesia | 4° 54' 26.877" N | 97° 26' 2.720" E | 2 | 2 | 32 | No | 05 October 2022 |
| | | Seureuke Village, Langkahan Sub District, Aceh Utara District, Aceh Province, Indonesia | 4° 54' 20.190" N | 97° 26' 13.207" E | 2 | 2 | 36 | No | 05 October 2022 |
| | | Seureuke Village, Langkahan Sub District, Aceh Utara District, Aceh Province, Indonesia | 4° 54' 30.939" N | 97° 25' 39.991" E | 2 | 2 | 0 | No | 05 October 2022 |
| | | Seureuke Village, Langkahan Sub District, Aceh Utara District, Aceh Province, Indonesia | 4° 54' 30.809" N | 97° 25' 36.716" E | 2 | 2 | 0 | No | 05 October 2022 |
| 53 | Firsta Ananda | Seureuke Village, Langkahan Sub District, Aceh Utara District, Aceh Province, Indonesia | 4° 52' 2.341" N | 97° 27' 19.382" E | 0.85 | 0.85 | 16 | No | 10 October 2022 |
| 54 | Fitri Kisyani | Seureuke Village, Langkahan Sub District, Aceh Utara District, Aceh Province, Indonesia | 4° 52' 18.319" N | 97° 25' 52.172" E | 0.5 | 0.5 | 12.2 | No | 01 October 2022 |
| 55 | Fitri Yuliani | Seureuke Village, Langkahan Sub District, Aceh Utara District, Aceh Province, Indonesia | 4° 53' 5.584" N | 97° 25' 43.574" E | 0.5 | 0.5 | 14.85 | No | 10 October 2022 |
| 56 | Fri Hardiansyah | Seureuke Village, Langkahan Sub District, Aceh Utara District, Aceh Province, Indonesia | 4° 54' 3.446" N | 97° 26' 7.964" E | 2 | 2 | 0 | No | 05 October 2022 |
| 57 | Gunari | Seureuke Village, Langkahan Sub District, Aceh Utara District, Aceh Province, Indonesia | 4° 52' 15.167" N | 97° 27' 16.294" E | 1 | 1 | 16.4 | No | 10 October 2022 |
| 58 | Hadi Sucipto | Seureuke Village, Langkahan Sub District, Aceh Utara District, Aceh Province, Indonesia | 4° 53' 57.465" N | 97° 26' 15.240" E | 2 | 2 | 34 | No | 01 October 2022 |
| | | Seureuke Village, Langkahan Sub District, Aceh Utara District, Aceh Province, Indonesia | 4° 52' 24.432" N | 97° 25' 39.413" E | 0.556 | 0.556 | 0 | No | 01 October 2022 |
| | | Seureuke Village, Langkahan Sub District, Aceh Utara District, Aceh Province, Indonesia | 4° 52' 23.322" N | 97° 25' 36.997" E | 1 | 1 | 23 | No | 01 October 2022 |
| | | Seureuke Village, Langkahan Sub District, Aceh Utara District, Aceh Province, Indonesia | 4° 52' 22.985" N | 97° 25' 34.172" E | 1 | 1 | 24.3 | No | 01 October 2022 |
| | | Seureuke Village, Langkahan Sub District, Aceh Utara District, Aceh Province, Indonesia | 4° 52' 21.958" N | 97° 25' 32.030" E | 1 | 1 | 24.1 | No | 01 October 2022 |
| | | Seureuke Village, Langkahan Sub District, Aceh Utara District, Aceh Province, Indonesia | 4° 52' 29.158" N | 97° 25' 45.572" E | 1 | 1 | 0 | No | 01 October 2022 |
| 59 | Hamdani | Seureuke Village, Langkahan Sub District, Aceh Utara District, Aceh Province, Indonesia | 4° 54' 38.543" N | 97° 26' 11.784" E | 2 | 2 | 40.2 | No | 06 October 2022 |
| 60 | Haryanti | Seureuke Village, Langkahan Sub District, Aceh Utara District, Aceh Province, Indonesia | 4° 51' 58.860" N | 97° 26' 44.238" E | 1 | 1 | 16.4 | No | 05 October 2022 |
| 61 | Haryanto | Seureuke Village, Langkahan Sub District, Aceh Utara District, Aceh Province, Indonesia | 4° 52' 19.395" N | 97° 25' 38.182" E | 0.64 | 0.64 | 12.1 | No | 05 October 2022 |
| 62 | Huda Handayani | Seureuke Village, Langkahan Sub District, Aceh Utara District, Aceh Province, Indonesia | 4° 52' 22.854" N | 97° 26' 30.615" E | 0.62 | 0.62 | 11.4 | No | 06 October 2022 |

| | | | | | | | | | |
|-----|----------------|---|------------------|-------------------|--------|--------|-------|----|-----------------|
| 63 | Imam Muslim | Seureuke Village, Langkahan Sub District, Aceh Utara District, Aceh Province, Indonesia | 4° 53' 33.822" N | 97° 25' 40.147" E | 2 | 2 | 34 | No | 05 October 2022 |
| | | Seureuke Village, Langkahan Sub District, Aceh Utara District, Aceh Province, Indonesia | 4° 53' 52.351" N | 97° 26' 7.724" E | 0.75 | 0.75 | 17 | No | 05 October 2022 |
| 64 | Imron Atansa | Seureuke Village, Langkahan Sub District, Aceh Utara District, Aceh Province, Indonesia | 4° 53' 38.750" N | 97° 25' 58.778" E | 1 | 1 | 15.2 | No | 06 October 2022 |
| 65 | Ishak Gani | Seureuke Village, Langkahan Sub District, Aceh Utara District, Aceh Province, Indonesia | 4° 52' 6.205" N | 97° 25' 54.099" E | 1 | 1 | 21 | No | 05 October 2022 |
| 66 | Iwan Fauzi | Seureuke Village, Langkahan Sub District, Aceh Utara District, Aceh Province, Indonesia | 4° 51' 48.962" N | 97° 27' 2.459" E | 2 | 2 | 38.6 | No | 05 October 2022 |
| 67 | Iwan Tusiono | Seureuke Village, Langkahan Sub District, Aceh Utara District, Aceh Province, Indonesia | 4° 54' 57.426" N | 97° 25' 52.305" E | 2 | 2 | 30 | No | 05 October 2022 |
| | | Seureuke Village, Langkahan Sub District, Aceh Utara District, Aceh Province, Indonesia | 4° 51' 48.008" N | 97° 25' 32.754" E | 0.7769 | 0.7769 | 15 | No | 05 October 2022 |
| 68 | Jailani | Seureuke Village, Langkahan Sub District, Aceh Utara District, Aceh Province, Indonesia | 4° 51' 59.262" N | 97° 26' 33.090" E | 0.99 | 0.99 | 21.4 | No | 06 October 2022 |
| 69 | Jamiat | Seureuke Village, Langkahan Sub District, Aceh Utara District, Aceh Province, Indonesia | 4° 52' 5.526" N | 97° 25' 39.906" E | 1 | 1 | 15.3 | No | 05 October 2022 |
| | | Seureuke Village, Langkahan Sub District, Aceh Utara District, Aceh Province, Indonesia | 4° 52' 7.396" N | 97° 25' 39.145" E | 1 | 1 | 15.6 | No | 05 October 2022 |
| | | Seureuke Village, Langkahan Sub District, Aceh Utara District, Aceh Province, Indonesia | 4° 52' 4.844" N | 97° 25' 35.992" E | 1 | 1 | 15 | No | 05 October 2022 |
| | | Seureuke Village, Langkahan Sub District, Aceh Utara District, Aceh Province, Indonesia | 4° 52' 8.860" N | 97° 25' 28.519" E | 0.559 | 0.559 | 0 | No | 05 October 2022 |
| 70 | Jamuri | Seureuke Village, Langkahan Sub District, Aceh Utara District, Aceh Province, Indonesia | 4° 52' 40.671" N | 97° 26' 11.864" E | 2 | 2 | 31.1 | No | 06 October 2022 |
| | | Seureuke Village, Langkahan Sub District, Aceh Utara District, Aceh Province, Indonesia | 4° 52' 56.636" N | 97° 26' 30.006" E | 0.4789 | 0.4789 | 9.2 | No | 06 October 2022 |
| | | Seureuke Village, Langkahan Sub District, Aceh Utara District, Aceh Province, Indonesia | 4° 52' 56.473" N | 97° 26' 31.592" E | 0.8349 | 0.8349 | 15 | No | 06 October 2022 |
| 71 | Joko | Seureuke Village, Langkahan Sub District, Aceh Utara District, Aceh Province, Indonesia | 4° 55' 2.889" N | 97° 25' 51.088" E | 2 | 2 | 32 | No | 10 October 2022 |
| 72 | Joni | Seureuke Village, Langkahan Sub District, Aceh Utara District, Aceh Province, Indonesia | 4° 53' 35.035" N | 97° 25' 46.732" E | 1 | 1 | 16.4 | No | 06 October 2022 |
| | | Seureuke Village, Langkahan Sub District, Aceh Utara District, Aceh Province, Indonesia | 4° 51' 15.889" N | 97° 25' 4.234" E | 1 | 1 | 15.6 | No | 06 October 2022 |
| 73 | Juli Mawaddah | Seureuke Village, Langkahan Sub District, Aceh Utara District, Aceh Province, Indonesia | 4° 53' 27.068" N | 97° 27' 18.805" E | 2 | 2 | 0 | No | 10 October 2022 |
| 74 | Juwariyah | Seureuke Village, Langkahan Sub District, Aceh Utara District, Aceh Province, Indonesia | 4° 52' 55.681" N | 97° 27' 14.488" E | 0.25 | 0.25 | 5 | No | 10 October 2022 |
| 75 | Karim | Seureuke Village, Langkahan Sub District, Aceh Utara District, Aceh Province, Indonesia | 4° 53' 7.536" N | 97° 26' 40.873" E | 2 | 2 | 34 | No | 05 October 2022 |
| | | Seureuke Village, Langkahan Sub District, Aceh Utara District, Aceh Province, Indonesia | 4° 53' 8.956" N | 97° 26' 35.393" E | 2 | 2 | 34 | No | 05 October 2022 |
| 76 | Karino | Seureuke Village, Langkahan Sub District, Aceh Utara District, Aceh Province, Indonesia | 4° 52' 51.473" N | 97° 24' 57.371" E | 0.52 | 0.52 | 9.8 | No | 06 October 2022 |
| 77 | Karlitosari | Seureuke Village, Langkahan Sub District, Aceh Utara District, Aceh Province, Indonesia | 4° 53' 49.290" N | 97° 27' 1.371" E | 2 | 2 | 0 | No | 06 October 2022 |
| 78 | Khalik Maulzar | Seureuke Village, Langkahan Sub District, Aceh Utara District, Aceh Province, Indonesia | 4° 52' 48.218" N | 97° 25' 50.801" E | 2 | 2 | 28.7 | No | 10 October 2022 |
| | | Seureuke Village, Langkahan Sub District, Aceh Utara District, Aceh Province, Indonesia | 4° 52' 21.901" N | 97° 25' 40.935" E | 0.45 | 0.45 | 6.9 | No | 10 October 2022 |
| 79 | Kiswanto | Seureuke Village, Langkahan Sub District, Aceh Utara District, Aceh Province, Indonesia | 4° 52' 39.710" N | 97° 26' 53.754" E | 1 | 1 | 25.25 | No | 06 October 2022 |
| 80 | Kiswanto | Seureuke Village, Langkahan Sub District, Aceh Utara District, Aceh Province, Indonesia | 4° 52' 11.078" N | 97° 26' 13.869" E | 0.83 | 0.83 | 12.2 | No | 05 October 2022 |
| 81 | Komedi | Seureuke Village, Langkahan Sub District, Aceh Utara District, Aceh Province, Indonesia | 4° 52' 48.804" N | 97° 25' 42.866" E | 2 | 2 | 0 | No | 03 October 2022 |
| 82 | Kusmianto | Seureuke Village, Langkahan Sub District, Aceh Utara District, Aceh Province, Indonesia | 4° 51' 17.348" N | 97° 26' 26.218" E | 0.42 | 0.42 | 11.2 | No | 03 October 2022 |
| 83 | Kusnin | Seureuke Village, Langkahan Sub District, Aceh Utara District, Aceh Province, Indonesia | 4° 52' 46.863" N | 97° 27' 48.701" E | 2 | 2 | 26.2 | No | 03 October 2022 |
| 84 | Kusnin | Seureuke Village, Langkahan Sub District, Aceh Utara District, Aceh Province, Indonesia | 4° 52' 46.836" N | 97° 26' 37.742" E | 1 | 1 | 21.2 | No | 10 October 2022 |
| | | Seureuke Village, Langkahan Sub District, Aceh Utara District, Aceh Province, Indonesia | 4° 52' 48.601" N | 97° 26' 35.279" E | 1 | 1 | 17.5 | No | 10 October 2022 |
| 85 | Kuslono | Seureuke Village, Langkahan Sub District, Aceh Utara District, Aceh Province, Indonesia | 4° 52' 16.241" N | 97° 26' 29.017" E | 1 | 1 | 22.4 | No | 10 October 2022 |
| 86 | Kuswanto | Seureuke Village, Langkahan Sub District, Aceh Utara District, Aceh Province, Indonesia | 4° 51' 53.224" N | 97° 26' 48.355" E | 1 | 1 | 20.3 | No | 03 October 2022 |
| 87 | Kuwatno | Seureuke Village, Langkahan Sub District, Aceh Utara District, Aceh Province, Indonesia | 4° 54' 43.088" N | 97° 25' 37.530" E | 2 | 2 | 0 | No | 03 October 2022 |
| 88 | Lasimin | Seureuke Village, Langkahan Sub District, Aceh Utara District, Aceh Province, Indonesia | 4° 53' 18.847" N | 97° 25' 45.840" E | 0.93 | 0.93 | 16 | No | 03 October 2022 |
| 89 | Listuk | Seureuke Village, Langkahan Sub District, Aceh Utara District, Aceh Province, Indonesia | 4° 52' 56.484" N | 97° 27' 22.910" E | 1 | 1 | 23.3 | No | 03 October 2022 |
| 90 | Liswati | Seureuke Village, Langkahan Sub District, Aceh Utara District, Aceh Province, Indonesia | 4° 53' 21.898" N | 97° 27' 15.144" E | 1 | 1 | 14.2 | No | 03 October 2022 |
| 91 | Lusy Liyani | Seureuke Village, Langkahan Sub District, Aceh Utara District, Aceh Province, Indonesia | 4° 54' 17.758" N | 97° 25' 37.399" E | 2 | 2 | 0 | No | 03 October 2022 |
| 92 | M Abdurrahman | Seureuke Village, Langkahan Sub District, Aceh Utara District, Aceh Province, Indonesia | 4° 53' 17.316" N | 97° 26' 56.998" E | 1 | 1 | 17.2 | No | 03 October 2022 |
| | | Seureuke Village, Langkahan Sub District, Aceh Utara District, Aceh Province, Indonesia | 4° 53' 18.768" N | 97° 26' 58.984" E | 0.5 | 0.5 | 9.4 | No | 03 October 2022 |
| | | Seureuke Village, Langkahan Sub District, Aceh Utara District, Aceh Province, Indonesia | 4° 53' 19.187" N | 97° 27' 2.540" E | 0.95 | 0.95 | 21.2 | No | 03 October 2022 |
| | | Seureuke Village, Langkahan Sub District, Aceh Utara District, Aceh Province, Indonesia | 4° 53' 25.309" N | 97° 26' 7.771" E | 2 | 2 | 0 | No | 03 October 2022 |
| | | Seureuke Village, Langkahan Sub District, Aceh Utara District, Aceh Province, Indonesia | 4° 54' 3.416" N | 97° 26' 10.163" E | 2 | 2 | 0 | No | 03 October 2022 |
| | | Seureuke Village, Langkahan Sub District, Aceh Utara District, Aceh Province, Indonesia | 4° 53' 58.750" N | 97° 25' 59.985" E | 2 | 2 | 0 | No | 03 October 2022 |
| | | Seureuke Village, Langkahan Sub District, Aceh Utara District, Aceh Province, Indonesia | 4° 54' 2.009" N | 97° 25' 36.629" E | 2 | 2 | 0 | No | 03 October 2022 |
| | | Seureuke Village, Langkahan Sub District, Aceh Utara District, Aceh Province, Indonesia | 4° 53' 42.915" N | 97° 24' 56.064" E | 2 | 2 | 0 | No | 03 October 2022 |
| 93 | M Ali | Seureuke Village, Langkahan Sub District, Aceh Utara District, Aceh Province, Indonesia | 4° 51' 58.487" N | 97° 27' 12.625" E | 0.2541 | 0.2541 | 4.6 | No | 06 October 2022 |
| | | Seureuke Village, Langkahan Sub District, Aceh Utara District, Aceh Province, Indonesia | 4° 52' 33.902" N | 97° 27' 18.721" E | 0.938 | 0.938 | 17.25 | No | 06 October 2022 |
| | | Seureuke Village, Langkahan Sub District, Aceh Utara District, Aceh Province, Indonesia | 4° 53' 36.224" N | 97° 26' 23.214" E | 2 | 2 | 0 | No | 06 October 2022 |
| 94 | M Kusin | Seureuke Village, Langkahan Sub District, Aceh Utara District, Aceh Province, Indonesia | 4° 51' 48.320" N | 97° 26' 28.745" E | 2 | 2 | 32.4 | No | 06 October 2022 |
| 95 | M Nur | Seureuke Village, Langkahan Sub District, Aceh Utara District, Aceh Province, Indonesia | 4° 51' 53.042" N | 97° 25' 45.797" E | 1 | 1 | 19.8 | No | 06 October 2022 |
| 96 | M Yunus Lubis | Seureuke Village, Langkahan Sub District, Aceh Utara District, Aceh Province, Indonesia | 4° 54' 11.738" N | 97° 25' 6.099" E | 2 | 2 | 0 | No | 06 October 2022 |
| 97 | M Zamzuri | Seureuke Village, Langkahan Sub District, Aceh Utara District, Aceh Province, Indonesia | 4° 53' 9.768" N | 97° 26' 1.219" E | 1 | 1 | 0 | No | 08 October 2022 |
| 98 | M. Rumain | Seureuke Village, Langkahan Sub District, Aceh Utara District, Aceh Province, Indonesia | 4° 52' 7.503" N | 97° 26' 37.786" E | 1 | 1 | 20.25 | No | 03 October 2022 |
| 99 | Mahmur | Seureuke Village, Langkahan Sub District, Aceh Utara District, Aceh Province, Indonesia | 4° 53' 23.485" N | 97° 26' 49.073" E | 2 | 2 | 34 | No | 03 October 2022 |
| 100 | Makmur Golur | Seureuke Village, Langkahan Sub District, Aceh Utara District, Aceh Province, Indonesia | 4° 51' 46.349" N | 97° 25' 45.349" E | 1 | 1 | 21.8 | No | 03 October 2022 |

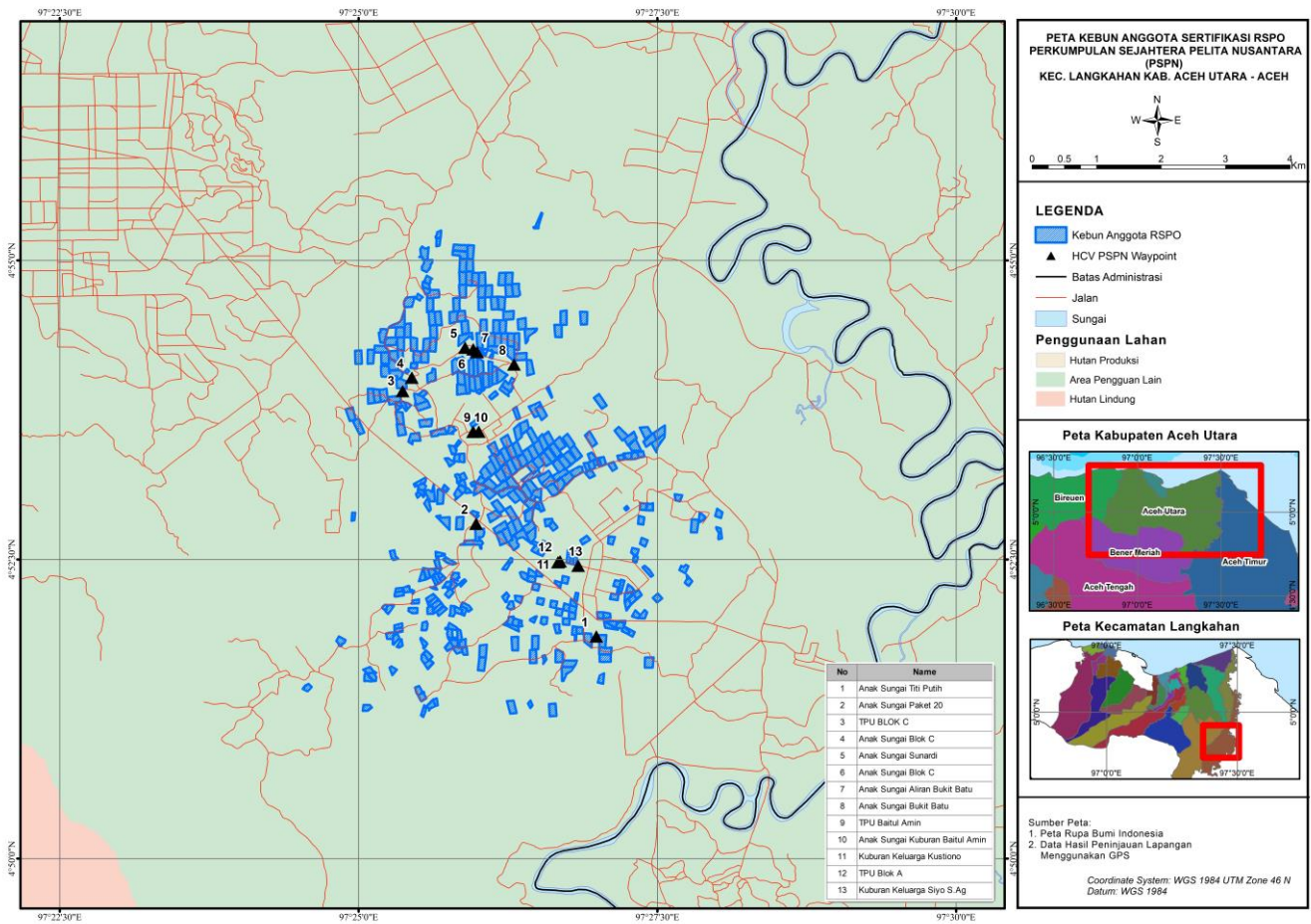
| | | | | | | | | | |
|-----|-----------------------|---|------------------|-------------------|--------|--------|------|----|-----------------|
| 101 | Mami Sumarsh | Seureuke Village, Langkahan Sub District, Aceh Utara District, Aceh Province, Indonesia | 4° 54' 57.352" N | 97° 25' 34.330" E | 2 | 2 | 32.7 | No | 03 October 2022 |
| 102 | Manda Adinda | Seureuke Village, Langkahan Sub District, Aceh Utara District, Aceh Province, Indonesia | 4° 52' 20.110" N | 97° 26' 26.895" E | 1 | 1 | 14.4 | No | 08 October 2022 |
| | | Seureuke Village, Langkahan Sub District, Aceh Utara District, Aceh Province, Indonesia | 4° 52' 23.170" N | 97° 26' 27.040" E | 1 | 1 | 15 | No | 08 October 2022 |
| 103 | Mardian | Seureuke Village, Langkahan Sub District, Aceh Utara District, Aceh Province, Indonesia | 4° 51' 49.704" N | 97° 26' 55.148" E | 2 | 2 | 34.5 | No | 06 October 2022 |
| 104 | Mariani | Seureuke Village, Langkahan Sub District, Aceh Utara District, Aceh Province, Indonesia | 4° 53' 25.878" N | 97° 26' 30.244" E | 2 | 2 | 0 | No | 06 October 2022 |
| | | Seureuke Village, Langkahan Sub District, Aceh Utara District, Aceh Province, Indonesia | 4° 53' 58.311" N | 97° 25' 54.510" E | 2 | 2 | 0 | No | 06 October 2022 |
| 105 | Marmi | Seureuke Village, Langkahan Sub District, Aceh Utara District, Aceh Province, Indonesia | 4° 52' 12.364" N | 97° 27' 20.023" E | 1 | 1 | 15.3 | No | 06 October 2022 |
| 106 | Mela Anjani | Seureuke Village, Langkahan Sub District, Aceh Utara District, Aceh Province, Indonesia | 4° 52' 47.140" N | 97° 26' 19.871" E | 2 | 2 | 34 | No | 06 October 2022 |
| 107 | Mhd Yusuf | Seureuke Village, Langkahan Sub District, Aceh Utara District, Aceh Province, Indonesia | 4° 54' 29.335" N | 97° 25' 20.026" E | 2 | 2 | 0 | No | 06 October 2022 |
| | | Seureuke Village, Langkahan Sub District, Aceh Utara District, Aceh Province, Indonesia | 4° 52' 4.395" N | 97° 25' 27.361" E | 1 | 1 | 19.2 | No | 06 October 2022 |
| 108 | Midun | Seureuke Village, Langkahan Sub District, Aceh Utara District, Aceh Province, Indonesia | 4° 54' 6.170" N | 97° 26' 26.133" E | 2 | 2 | 36.8 | No | 06 October 2022 |
| 109 | Mik Saputra | Seureuke Village, Langkahan Sub District, Aceh Utara District, Aceh Province, Indonesia | 4° 51' 15.944" N | 97° 26' 16.930" E | 2 | 2 | 36.8 | No | 06 October 2022 |
| 110 | Muda Saki | Seureuke Village, Langkahan Sub District, Aceh Utara District, Aceh Province, Indonesia | 4° 51' 44.163" N | 97° 27' 3.790" E | 2 | 2 | 31.2 | No | 06 October 2022 |
| 111 | Mugi Raharjo | Seureuke Village, Langkahan Sub District, Aceh Utara District, Aceh Province, Indonesia | 4° 51' 59.897" N | 97° 26' 27.777" E | 0.5 | 0.5 | 13.1 | No | 06 October 2022 |
| 112 | Muhammad | Seureuke Village, Langkahan Sub District, Aceh Utara District, Aceh Province, Indonesia | 4° 53' 2.405" N | 97° 26' 29.062" E | 2 | 2 | 0 | No | 06 October 2022 |
| 113 | Muhammad Asrof | Seureuke Village, Langkahan Sub District, Aceh Utara District, Aceh Province, Indonesia | 4° 51' 52.239" N | 97° 25' 50.601" E | 1 | 1 | 21.6 | No | 06 October 2022 |
| 114 | Muhammad Chamdani | Seureuke Village, Langkahan Sub District, Aceh Utara District, Aceh Province, Indonesia | 4° 53' 54.473" N | 97° 26' 1.124" E | 0.55 | 0.55 | 9.6 | No | 08 October 2022 |
| | | Seureuke Village, Langkahan Sub District, Aceh Utara District, Aceh Province, Indonesia | 4° 53' 8.482" N | 97° 26' 17.337" E | 2 | 2 | 0 | No | 08 October 2022 |
| | | Seureuke Village, Langkahan Sub District, Aceh Utara District, Aceh Province, Indonesia | 4° 53' 20.035" N | 97° 26' 11.312" E | 2 | 2 | 0 | No | 08 October 2022 |
| | | Seureuke Village, Langkahan Sub District, Aceh Utara District, Aceh Province, Indonesia | 4° 51' 47.968" N | 97° 25' 50.425" E | 0.36 | 0.36 | 9.2 | No | 08 October 2022 |
| | | Seureuke Village, Langkahan Sub District, Aceh Utara District, Aceh Province, Indonesia | 4° 51' 50.239" N | 97° 25' 47.262" E | 0.5 | 0.5 | 9.7 | No | 08 October 2022 |
| | | Seureuke Village, Langkahan Sub District, Aceh Utara District, Aceh Province, Indonesia | 4° 51' 47.894" N | 97° 25' 47.728" E | 1 | 1 | 21.2 | No | 08 October 2022 |
| 115 | Muhammad Erwan | Seureuke Village, Langkahan Sub District, Aceh Utara District, Aceh Province, Indonesia | 4° 51' 25.722" N | 97° 24' 34.187" E | 0.86 | 0.86 | 0 | No | 06 October 2022 |
| 116 | Muhammad Falah Husada | Seureuke Village, Langkahan Sub District, Aceh Utara District, Aceh Province, Indonesia | 4° 52' 10.094" N | 97° 26' 20.452" E | 0.95 | 0.95 | 17.2 | No | 06 October 2022 |
| 117 | Muhammad Husin | Seureuke Village, Langkahan Sub District, Aceh Utara District, Aceh Province, Indonesia | 4° 52' 14.774" N | 97° 25' 24.821" E | 1 | 1 | 16 | No | 08 October 2022 |
| 118 | Muhammad Khwani | Seureuke Village, Langkahan Sub District, Aceh Utara District, Aceh Province, Indonesia | 4° 54' 39.122" N | 97° 25' 25.365" E | 2 | 2 | 0 | No | 08 October 2022 |
| 119 | Muhammad Nasoha | Seureuke Village, Langkahan Sub District, Aceh Utara District, Aceh Province, Indonesia | 4° 52' 11.367" N | 97° 27' 15.503" E | 0.9879 | 0.9879 | 13.2 | No | 08 October 2022 |
| 120 | Muhammad Saleh | Seureuke Village, Langkahan Sub District, Aceh Utara District, Aceh Province, Indonesia | 4° 53' 2.232" N | 97° 26' 21.379" E | 2 | 2 | 32.8 | No | 06 October 2022 |
| 121 | Muhammad Zulfahmi | Seureuke Village, Langkahan Sub District, Aceh Utara District, Aceh Province, Indonesia | 4° 53' 51.844" N | 97° 25' 6.254" E | 2 | 2 | 0 | No | 08 October 2022 |
| 122 | Mukhter Efendi | Seureuke Village, Langkahan Sub District, Aceh Utara District, Aceh Province, Indonesia | 4° 53' 30.589" N | 97° 27' 16.510" E | 2 | 2 | 0 | No | 06 October 2022 |
| 123 | Mukiman | Seureuke Village, Langkahan Sub District, Aceh Utara District, Aceh Province, Indonesia | 4° 52' 17.637" N | 97° 26' 40.160" E | 0.59 | 0.59 | 11.2 | No | 06 October 2022 |
| 124 | Mukminah | Seureuke Village, Langkahan Sub District, Aceh Utara District, Aceh Province, Indonesia | 4° 52' 7.561" N | 97° 27' 15.119" E | 1 | 1 | 15.2 | No | 06 October 2022 |
| 125 | Mukromin | Seureuke Village, Langkahan Sub District, Aceh Utara District, Aceh Province, Indonesia | 4° 51' 41.828" N | 97° 25' 34.815" E | 1 | 1 | 0 | No | 06 October 2022 |
| | | Seureuke Village, Langkahan Sub District, Aceh Utara District, Aceh Province, Indonesia | 4° 51' 40.293" N | 97° 25' 33.147" E | 1 | 1 | 12 | No | 06 October 2022 |
| | | Seureuke Village, Langkahan Sub District, Aceh Utara District, Aceh Province, Indonesia | 4° 51' 37.437" N | 97° 25' 35.278" E | 1 | 1 | 10.2 | No | 06 October 2022 |
| | | Seureuke Village, Langkahan Sub District, Aceh Utara District, Aceh Province, Indonesia | 4° 53' 4.608" N | 97° 25' 55.087" E | 0.5625 | 0.5625 | 14.4 | No | 06 October 2022 |
| 126 | Munhahar | Seureuke Village, Langkahan Sub District, Aceh Utara District, Aceh Province, Indonesia | 4° 53' 30.340" N | 97° 26' 56.660" E | 2 | 2 | 0 | No | 08 October 2022 |
| 127 | Murni | Seureuke Village, Langkahan Sub District, Aceh Utara District, Aceh Province, Indonesia | 4° 51' 44.596" N | 97° 25' 49.751" E | 1 | 1 | 21 | No | 08 October 2022 |
| 128 | Musliadi | Seureuke Village, Langkahan Sub District, Aceh Utara District, Aceh Province, Indonesia | 4° 53' 29.250" N | 97° 26' 45.486" E | 2 | 2 | 32 | No | 08 October 2022 |
| | | Seureuke Village, Langkahan Sub District, Aceh Utara District, Aceh Province, Indonesia | 4° 53' 33.099" N | 97° 27' 11.902" E | 2 | 2 | 0 | No | 08 October 2022 |
| 129 | Muslim | Seureuke Village, Langkahan Sub District, Aceh Utara District, Aceh Province, Indonesia | 4° 53' 47.215" N | 97° 25' 24.720" E | 0.51 | 0.51 | 9.2 | No | 08 October 2022 |
| 130 | Muslim | Seureuke Village, Langkahan Sub District, Aceh Utara District, Aceh Province, Indonesia | 4° 52' 37.740" N | 97° 26' 29.957" E | 0.8784 | 0.8784 | 15 | No | 06 October 2022 |
| | | Seureuke Village, Langkahan Sub District, Aceh Utara District, Aceh Province, Indonesia | 4° 52' 36.921" N | 97° 26' 33.501" E | 0.9554 | 0.9554 | 15 | No | 06 October 2022 |
| | | Seureuke Village, Langkahan Sub District, Aceh Utara District, Aceh Province, Indonesia | 4° 52' 33.736" N | 97° 26' 31.851" E | 1 | 1 | 19.8 | No | 06 October 2022 |
| | | Seureuke Village, Langkahan Sub District, Aceh Utara District, Aceh Province, Indonesia | 4° 52' 35.065" N | 97° 26' 29.086" E | 1 | 1 | 15 | No | 06 October 2022 |
| | | Seureuke Village, Langkahan Sub District, Aceh Utara District, Aceh Province, Indonesia | 4° 52' 46.009" N | 97° 26' 25.729" E | 2 | 2 | 0 | No | 06 October 2022 |
| | | Seureuke Village, Langkahan Sub District, Aceh Utara District, Aceh Province, Indonesia | 4° 52' 42.099" N | 97° 26' 26.768" E | 2 | 2 | 0 | No | 06 October 2022 |
| 131 | Muzakir | Seureuke Village, Langkahan Sub District, Aceh Utara District, Aceh Province, Indonesia | 4° 54' 22.720" N | 97° 26' 26.004" E | 2 | 2 | 0 | No | 08 October 2022 |
| 132 | Nafsiyah | Seureuke Village, Langkahan Sub District, Aceh Utara District, Aceh Province, Indonesia | 4° 53' 22.108" N | 97° 26' 24.936" E | 2 | 2 | 0 | No | 10 October 2022 |
| 133 | Ngatini | Seureuke Village, Langkahan Sub District, Aceh Utara District, Aceh Province, Indonesia | 4° 54' 12.086" N | 97° 26' 6.699" E | 0.25 | 0.25 | 4.8 | No | 10 October 2022 |
| 134 | Ngafirani | Seureuke Village, Langkahan Sub District, Aceh Utara District, Aceh Province, Indonesia | 4° 51' 56.088" N | 97° 26' 16.853" E | 1 | 1 | 15.3 | No | 08 October 2022 |
| | | Seureuke Village, Langkahan Sub District, Aceh Utara District, Aceh Province, Indonesia | 4° 51' 47.865" N | 97° 26' 18.495" E | 2 | 2 | 33 | No | 08 October 2022 |
| 135 | Ngatno | Seureuke Village, Langkahan Sub District, Aceh Utara District, Aceh Province, Indonesia | 4° 51' 34.470" N | 97° 25' 5.470" E | 1 | 1 | 15 | No | 10 October 2022 |
| | | Seureuke Village, Langkahan Sub District, Aceh Utara District, Aceh Province, Indonesia | 4° 51' 31.253" N | 97° 25' 6.769" E | 1 | 1 | 17 | No | 10 October 2022 |
| | | Seureuke Village, Langkahan Sub District, Aceh Utara District, Aceh Province, Indonesia | 4° 52' 20.441" N | 97° 25' 39.540" E | 0.86 | 0.86 | 0 | No | 10 October 2022 |
| 136 | Nur Ansari | Seureuke Village, Langkahan Sub District, Aceh Utara District, Aceh Province, Indonesia | 4° 51' 16.903" N | 97° 25' 36.361" E | 1 | 1 | 15 | No | 08 October 2022 |
| | | Seureuke Village, Langkahan Sub District, Aceh Utara District, Aceh Province, Indonesia | 4° 51' 18.493" N | 97° 25' 38.557" E | 0.5642 | 0.5642 | 10.6 | No | 08 October 2022 |
| 137 | Nur Anyas | Seureuke Village, Langkahan Sub District, Aceh Utara District, Aceh Province, Indonesia | 4° 52' 30.190" N | 97° 27' 18.996" E | 0.5175 | 0.5175 | 3.4 | No | 03 October 2022 |
| 138 | Nur Istiana | Seureuke Village, Langkahan Sub District, Aceh Utara District, Aceh Province, Indonesia | 4° 54' 23.895" N | 97° 25' 20.863" E | 2 | 2 | 0 | No | 03 October 2022 |

| | | | | | | | | | |
|-----|-------------------|---|------------------|-------------------|--------|--------|-------|----|-----------------|
| 139 | Nur Supardi | Seureuke Village, Langkahan Sub District, Aceh Utara District, Aceh Province, Indonesia | 4° 54' 47.222" N | 97° 25' 34.010" E | 0.83 | 0.83 | 19.2 | No | 03 October 2022 |
| | | Seureuke Village, Langkahan Sub District, Aceh Utara District, Aceh Province, Indonesia | 4° 54' 44.824" N | 97° 25' 34.036" E | 0.7 | 0.7 | 14 | No | 03 October 2022 |
| 140 | Nuraini | Seureuke Village, Langkahan Sub District, Aceh Utara District, Aceh Province, Indonesia | 4° 53' 33.606" N | 97° 27' 24.262" E | 2 | 2 | 0 | No | 03 October 2022 |
| 141 | Nurdin | Seureuke Village, Langkahan Sub District, Aceh Utara District, Aceh Province, Indonesia | 4° 53' 46.295" N | 97° 25' 19.735" E | 0.5112 | 0.5112 | 10.4 | No | 08 October 2022 |
| | | Seureuke Village, Langkahan Sub District, Aceh Utara District, Aceh Province, Indonesia | 4° 53' 16.727" N | 97° 27' 7.562" E | 1 | 1 | 22.7 | No | 08 October 2022 |
| 142 | Nurwayati | Seureuke Village, Langkahan Sub District, Aceh Utara District, Aceh Province, Indonesia | 4° 53' 14.244" N | 97° 26' 49.580" E | 2 | 2 | 21.2 | No | 10 October 2022 |
| 143 | Nurma Sari | Seureuke Village, Langkahan Sub District, Aceh Utara District, Aceh Province, Indonesia | 4° 52' 4.250" N | 97° 25' 41.664" E | 1 | 1 | 12.6 | No | 08 October 2022 |
| | | Seureuke Village, Langkahan Sub District, Aceh Utara District, Aceh Province, Indonesia | 4° 52' 10.457" N | 97° 25' 36.277" E | 1 | 1 | 9.2 | No | 08 October 2022 |
| 144 | Nursaudah | Seureuke Village, Langkahan Sub District, Aceh Utara District, Aceh Province, Indonesia | 4° 54' 0.737" N | 97° 25' 51.474" E | 2 | 2 | 0 | No | 07 October 2022 |
| 145 | Nurul Lismayati | Seureuke Village, Langkahan Sub District, Aceh Utara District, Aceh Province, Indonesia | 4° 52' 38.674" N | 97° 27' 23.172" E | 0.96 | 0.96 | 13.7 | No | 10 October 2022 |
| 146 | Nurul Roby Irfani | Seureuke Village, Langkahan Sub District, Aceh Utara District, Aceh Province, Indonesia | 4° 54' 31.082" N | 97° 26' 53.042" E | 2 | 2 | 0 | No | 10 October 2022 |
| 147 | Patmono | Seureuke Village, Langkahan Sub District, Aceh Utara District, Aceh Province, Indonesia | 4° 53' 45.210" N | 97° 26' 28.532" E | 2 | 2 | 0 | No | 07 October 2022 |
| 148 | Ponaji | Seureuke Village, Langkahan Sub District, Aceh Utara District, Aceh Province, Indonesia | 4° 54' 10.710" N | 97° 25' 20.974" E | 2 | 2 | 32 | No | 07 October 2022 |
| 149 | Ponimin | Seureuke Village, Langkahan Sub District, Aceh Utara District, Aceh Province, Indonesia | 4° 53' 28.043" N | 97° 26' 40.982" E | 2 | 2 | 23.2 | No | 08 October 2022 |
| | | Seureuke Village, Langkahan Sub District, Aceh Utara District, Aceh Province, Indonesia | 4° 53' 27.769" N | 97° 25' 49.739" E | 0.4399 | 0.4399 | 6.9 | No | 08 October 2022 |
| | | Seureuke Village, Langkahan Sub District, Aceh Utara District, Aceh Province, Indonesia | 4° 53' 2.941" N | 97° 25' 35.988" E | 2 | 2 | 25.3 | No | 08 October 2022 |
| 150 | Puji Iskandar | Seureuke Village, Langkahan Sub District, Aceh Utara District, Aceh Province, Indonesia | 4° 53' 25.543" N | 97° 26' 19.729" E | 2 | 2 | 0 | No | 10 October 2022 |
| 151 | Puji Lestari | Seureuke Village, Langkahan Sub District, Aceh Utara District, Aceh Province, Indonesia | 4° 52' 16.352" N | 97° 27' 11.978" E | 1 | 1 | 6 | No | 07 October 2022 |
| 152 | Raja Abdurais | Seureuke Village, Langkahan Sub District, Aceh Utara District, Aceh Province, Indonesia | 4° 52' 37.940" N | 97° 25' 57.173" E | 2 | 2 | 32.8 | No | 10 October 2022 |
| 153 | Raji | Seureuke Village, Langkahan Sub District, Aceh Utara District, Aceh Province, Indonesia | 4° 54' 11.588" N | 97° 25' 33.209" E | 2 | 2 | 32 | No | 01 October 2022 |
| 154 | Ramadhan | Seureuke Village, Langkahan Sub District, Aceh Utara District, Aceh Province, Indonesia | 4° 51' 56.175" N | 97° 25' 46.577" E | 1 | 1 | 20.8 | No | 01 October 2022 |
| 155 | Rani Faria Dewi | Seureuke Village, Langkahan Sub District, Aceh Utara District, Aceh Province, Indonesia | 4° 52' 56.350" N | 97° 27' 26.198" E | 1 | 1 | 17.2 | No | 07 October 2022 |
| 156 | Ridho Santoso | Seureuke Village, Langkahan Sub District, Aceh Utara District, Aceh Province, Indonesia | 4° 52' 8.848" N | 97° 25' 37.408" E | 1 | 1 | 12.6 | No | 07 October 2022 |
| 157 | Ridwan | Seureuke Village, Langkahan Sub District, Aceh Utara District, Aceh Province, Indonesia | 4° 51' 47.909" N | 97° 25' 52.155" E | 1 | 1 | 20 | No | 10 October 2022 |
| 158 | Riki Wahyu | Seureuke Village, Langkahan Sub District, Aceh Utara District, Aceh Province, Indonesia | 4° 52' 38.101" N | 97° 26' 18.007" E | 2 | 2 | 25.2 | No | 07 October 2022 |
| | | Seureuke Village, Langkahan Sub District, Aceh Utara District, Aceh Province, Indonesia | 4° 53' 11.359" N | 97° 26' 33.234" E | 2 | 2 | 0 | No | 07 October 2022 |
| 159 | Rina | Seureuke Village, Langkahan Sub District, Aceh Utara District, Aceh Province, Indonesia | 4° 53' 16.360" N | 97° 26' 16.816" E | 2 | 2 | 0 | No | 01 October 2022 |
| 160 | Rita Ashriah | Seureuke Village, Langkahan Sub District, Aceh Utara District, Aceh Province, Indonesia | 4° 53' 19.627" N | 97° 26' 22.334" E | 2 | 2 | 0 | No | 01 October 2022 |
| 161 | Rokim | Seureuke Village, Langkahan Sub District, Aceh Utara District, Aceh Province, Indonesia | 4° 51' 30.823" N | 97° 25' 4.916" E | 1 | 1 | 15.8 | No | 07 October 2022 |
| 162 | Rokimah | Seureuke Village, Langkahan Sub District, Aceh Utara District, Aceh Province, Indonesia | 4° 52' 32.131" N | 97° 25' 17.613" E | 1 | 1 | 24 | No | 07 October 2022 |
| 163 | Romadin | Seureuke Village, Langkahan Sub District, Aceh Utara District, Aceh Province, Indonesia | 4° 53' 18.587" N | 97° 26' 30.420" E | 2 | 2 | 38 | No | 08 October 2022 |
| | | Seureuke Village, Langkahan Sub District, Aceh Utara District, Aceh Province, Indonesia | 4° 54' 6.962" N | 97° 25' 48.531" E | 2 | 2 | 24 | No | 08 October 2022 |
| | | Seureuke Village, Langkahan Sub District, Aceh Utara District, Aceh Province, Indonesia | 4° 53' 18.997" N | 97° 26' 43.328" E | 2 | 2 | 32.2 | No | 08 October 2022 |
| | | Seureuke Village, Langkahan Sub District, Aceh Utara District, Aceh Province, Indonesia | 4° 53' 20.946" N | 97° 26' 46.016" E | 2 | 2 | 31.2 | No | 08 October 2022 |
| | | Seureuke Village, Langkahan Sub District, Aceh Utara District, Aceh Province, Indonesia | 4° 53' 58.188" N | 97° 25' 21.459" E | 2 | 2 | 0 | No | 08 October 2022 |
| | | Seureuke Village, Langkahan Sub District, Aceh Utara District, Aceh Province, Indonesia | 4° 54' 37.685" N | 97° 25' 35.909" E | 2 | 2 | 30.1 | No | 08 October 2022 |
| 164 | Roni Indrawan | Seureuke Village, Langkahan Sub District, Aceh Utara District, Aceh Province, Indonesia | 4° 54' 45.110" N | 97° 26' 19.004" E | 1 | 1 | 0 | No | 08 October 2022 |
| 165 | Ruadi | Seureuke Village, Langkahan Sub District, Aceh Utara District, Aceh Province, Indonesia | 4° 51' 33.088" N | 97° 26' 44.573" E | 2 | 2 | 24 | No | 08 October 2022 |
| 166 | Rubiyanti | Seureuke Village, Langkahan Sub District, Aceh Utara District, Aceh Province, Indonesia | 4° 54' 20.279" N | 97° 26' 6.708" E | 2 | 2 | 0 | No | 04 October 2022 |
| 167 | Ruchi Sania | Seureuke Village, Langkahan Sub District, Aceh Utara District, Aceh Province, Indonesia | 4° 54' 31.264" N | 97° 26' 42.913" E | 2 | 2 | 24 | No | 02 October 2022 |
| 168 | Rugilo | Seureuke Village, Langkahan Sub District, Aceh Utara District, Aceh Province, Indonesia | 4° 55' 3.597" N | 97° 25' 32.912" E | 2 | 2 | 28.4 | No | 05 October 2022 |
| | | Seureuke Village, Langkahan Sub District, Aceh Utara District, Aceh Province, Indonesia | 4° 54' 41.515" N | 97° 25' 30.419" E | 0.5421 | 0.5421 | 9.2 | No | 05 October 2022 |
| 169 | Rujlo | Seureuke Village, Langkahan Sub District, Aceh Utara District, Aceh Province, Indonesia | 4° 53' 30.452" N | 97° 26' 35.333" E | 2 | 2 | 26.8 | No | 08 October 2022 |
| | | Seureuke Village, Langkahan Sub District, Aceh Utara District, Aceh Province, Indonesia | 4° 53' 2.432" N | 97° 25' 29.996" E | 0.37 | 0.37 | 5.6 | No | 08 October 2022 |
| 170 | Rumiah | Seureuke Village, Langkahan Sub District, Aceh Utara District, Aceh Province, Indonesia | 4° 53' 10.657" N | 97° 25' 50.067" E | 0.7662 | 0.7662 | 12.2 | No | 05 October 2022 |
| | | Seureuke Village, Langkahan Sub District, Aceh Utara District, Aceh Province, Indonesia | 4° 53' 11.495" N | 97° 25' 52.450" E | 0.7752 | 0.7752 | 13.2 | No | 05 October 2022 |
| 171 | Saban | Seureuke Village, Langkahan Sub District, Aceh Utara District, Aceh Province, Indonesia | 4° 54' 51.069" N | 97° 26' 15.479" E | 2 | 2 | 0 | No | 02 October 2022 |
| 172 | Sadiyo | Seureuke Village, Langkahan Sub District, Aceh Utara District, Aceh Province, Indonesia | 4° 53' 6.626" N | 97° 25' 31.851" E | 0.97 | 0.97 | 14.85 | No | 08 October 2022 |
| | | Seureuke Village, Langkahan Sub District, Aceh Utara District, Aceh Province, Indonesia | 4° 53' 3.422" N | 97° 25' 31.477" E | 0.61 | 0.61 | 12.75 | No | 08 October 2022 |
| | | Seureuke Village, Langkahan Sub District, Aceh Utara District, Aceh Province, Indonesia | 4° 54' 24.976" N | 97° 25' 24.663" E | 2 | 2 | 0 | No | 08 October 2022 |
| 173 | Salimman | Seureuke Village, Langkahan Sub District, Aceh Utara District, Aceh Province, Indonesia | 4° 53' 12.794" N | 97° 26' 56.176" E | 1 | 1 | 19.8 | No | 06 October 2022 |
| 174 | Samidi | Seureuke Village, Langkahan Sub District, Aceh Utara District, Aceh Province, Indonesia | 4° 53' 54.584" N | 97° 26' 13.324" E | 0.9878 | 0.9878 | 15.9 | No | 06 October 2022 |
| 175 | Samidjo | Seureuke Village, Langkahan Sub District, Aceh Utara District, Aceh Province, Indonesia | 4° 52' 5.148" N | 97° 25' 15.530" E | 1 | 1 | 15 | No | 08 October 2022 |
| 176 | Sarjono | Seureuke Village, Langkahan Sub District, Aceh Utara District, Aceh Province, Indonesia | 4° 52' 52.572" N | 97° 26' 25.920" E | 2 | 2 | 25.2 | No | 06 October 2022 |
| 177 | Sarjono B | Seureuke Village, Langkahan Sub District, Aceh Utara District, Aceh Province, Indonesia | 4° 52' 21.440" N | 97° 25' 48.572" E | 1 | 1 | 18.4 | No | 06 October 2022 |
| 178 | Samran | Seureuke Village, Langkahan Sub District, Aceh Utara District, Aceh Province, Indonesia | 4° 54' 37.834" N | 97° 25' 49.156" E | 2 | 2 | 31.8 | No | 06 October 2022 |
| 179 | Sarmani | Seureuke Village, Langkahan Sub District, Aceh Utara District, Aceh Province, Indonesia | 4° 54' 11.475" N | 97° 24' 59.924" E | 2 | 2 | 0 | No | 06 October 2022 |
| 180 | Sarmin | Seureuke Village, Langkahan Sub District, Aceh Utara District, Aceh Province, Indonesia | 4° 53' 24.263" N | 97° 26' 16.747" E | 2 | 2 | 32 | No | 06 October 2022 |
| 181 | Sarwoto | Seureuke Village, Langkahan Sub District, Aceh Utara District, Aceh Province, Indonesia | 4° 52' 9.952" N | 97° 27' 17.537" E | 1 | 1 | 9.2 | No | 06 October 2022 |

| | | | | | | | | | |
|-----|-------------------|---|------------------|-------------------|--------|--------|-------|----|-----------------|
| 182 | Semangat Tarigan | Seureuke Village, Langkahan Sub District, Aceh Utara District, Aceh Province, Indonesia | 4° 52' 57.001" N | 97° 26' 25.919" E | 2 | 2 | 0 | No | 06 October 2022 |
| 183 | Shalfisaurani | Seureuke Village, Langkahan Sub District, Aceh Utara District, Aceh Province, Indonesia | 4° 54' 51.001" N | 97° 25' 52.206" E | 2 | 2 | 30.8 | No | 06 October 2022 |
| | | Seureuke Village, Langkahan Sub District, Aceh Utara District, Aceh Province, Indonesia | 4° 54' 50.896" N | 97° 25' 55.472" E | 2 | 2 | 34.3 | No | 06 October 2022 |
| 184 | Sholikin Syaputra | Seureuke Village, Langkahan Sub District, Aceh Utara District, Aceh Province, Indonesia | 4° 52' 3.581" N | 97° 26' 40.719" E | 1 | 1 | 20.25 | No | 06 October 2022 |
| 185 | Sigit Guntho | Seureuke Village, Langkahan Sub District, Aceh Utara District, Aceh Province, Indonesia | 4° 52' 5.033" N | 97° 26' 47.476" E | 1 | 1 | 13.2 | No | 06 October 2022 |
| 186 | Sigit Wyono | Seureuke Village, Langkahan Sub District, Aceh Utara District, Aceh Province, Indonesia | 4° 52' 21.648" N | 97° 26' 22.986" E | 1 | 1 | 21.1 | No | 06 October 2022 |
| 187 | Siti Arolatun | Seureuke Village, Langkahan Sub District, Aceh Utara District, Aceh Province, Indonesia | 4° 53' 18.682" N | 97° 27' 0.794" E | 0.5 | 0.5 | 10.1 | No | 09 October 2022 |
| | | Seureuke Village, Langkahan Sub District, Aceh Utara District, Aceh Province, Indonesia | 4° 53' 21.405" N | 97° 26' 57.209" E | 1 | 1 | 15.9 | No | 09 October 2022 |
| 188 | Siti Hadizah | Seureuke Village, Langkahan Sub District, Aceh Utara District, Aceh Province, Indonesia | 4° 54' 32.424" N | 97° 26' 15.276" E | 2 | 2 | 0 | No | 09 October 2022 |
| | | Seureuke Village, Langkahan Sub District, Aceh Utara District, Aceh Province, Indonesia | 4° 53' 59.840" N | 97° 26' 5.621" E | 2 | 2 | 26 | No | 09 October 2022 |
| 189 | Siti Nurhasanah | Seureuke Village, Langkahan Sub District, Aceh Utara District, Aceh Province, Indonesia | 4° 53' 41.152" N | 97° 25' 20.606" E | 2 | 2 | 0 | No | 09 October 2022 |
| 190 | Siti Suryati | Seureuke Village, Langkahan Sub District, Aceh Utara District, Aceh Province, Indonesia | 4° 52' 19.774" N | 97° 26' 43.777" E | 0.95 | 0.95 | 16 | No | 06 October 2022 |
| 191 | Siyami | Seureuke Village, Langkahan Sub District, Aceh Utara District, Aceh Province, Indonesia | 4° 52' 11.273" N | 97° 26' 49.350" E | 0.5 | 0.5 | 6.6 | No | 06 October 2022 |
| 192 | Siyo S.ag | Seureuke Village, Langkahan Sub District, Aceh Utara District, Aceh Province, Indonesia | 4° 51' 54.537" N | 97° 25' 20.034" E | 0.81 | 0.81 | 11.4 | No | 06 October 2022 |
| 193 | Slamet Prawoto | Seureuke Village, Langkahan Sub District, Aceh Utara District, Aceh Province, Indonesia | 4° 53' 53.240" N | 97° 25' 32.342" E | 0.7495 | 0.7495 | 14.4 | No | 09 October 2022 |
| 194 | Sodkin | Seureuke Village, Langkahan Sub District, Aceh Utara District, Aceh Province, Indonesia | 4° 51' 14.516" N | 97° 26' 37.459" E | 2 | 2 | 21.2 | No | 06 October 2022 |
| 195 | Sri Amurni | Seureuke Village, Langkahan Sub District, Aceh Utara District, Aceh Province, Indonesia | 4° 52' 17.165" N | 97° 25' 44.350" E | 1 | 1 | 14.85 | No | 09 October 2022 |
| | | Seureuke Village, Langkahan Sub District, Aceh Utara District, Aceh Province, Indonesia | 4° 52' 17.254" N | 97° 25' 47.757" E | 1 | 1 | 14.16 | No | 09 October 2022 |
| | | Seureuke Village, Langkahan Sub District, Aceh Utara District, Aceh Province, Indonesia | 4° 53' 32.099" N | 97° 26' 27.280" E | 2 | 2 | 26 | No | 09 October 2022 |
| | | Seureuke Village, Langkahan Sub District, Aceh Utara District, Aceh Province, Indonesia | 4° 53' 6.591" N | 97° 26' 26.682" E | 2 | 2 | 0 | No | 09 October 2022 |
| 196 | Sri Astuti | Seureuke Village, Langkahan Sub District, Aceh Utara District, Aceh Province, Indonesia | 4° 54' 26.479" N | 97° 25' 53.417" E | 2 | 2 | 0 | No | 07 October 2022 |
| 197 | Sri Dahniar | Seureuke Village, Langkahan Sub District, Aceh Utara District, Aceh Province, Indonesia | 4° 53' 29.702" N | 97° 27' 26.007" E | 2 | 2 | 0 | No | 03 October 2022 |
| | | Seureuke Village, Langkahan Sub District, Aceh Utara District, Aceh Province, Indonesia | 4° 53' 33.599" N | 97° 27' 31.045" E | 2 | 2 | 0 | No | 03 October 2022 |
| | | Seureuke Village, Langkahan Sub District, Aceh Utara District, Aceh Province, Indonesia | 4° 53' 28.583" N | 97° 27' 30.300" E | 2 | 2 | 0 | No | 07 October 2022 |
| | | Seureuke Village, Langkahan Sub District, Aceh Utara District, Aceh Province, Indonesia | 4° 51' 37.709" N | 97° 26' 45.761" E | 2 | 2 | 24.6 | No | 04 October 2022 |
| 199 | Sri Kumalasari | Seureuke Village, Langkahan Sub District, Aceh Utara District, Aceh Province, Indonesia | 4° 52' 52.701" N | 97° 25' 58.375" E | 0.68 | 0.68 | 11.8 | No | 01 October 2022 |
| 200 | Sri Kusni | Seureuke Village, Langkahan Sub District, Aceh Utara District, Aceh Province, Indonesia | 4° 53' 25.035" N | 97° 25' 47.287" E | 1 | 1 | 14 | No | 03 October 2022 |
| 201 | Siti Mulyani | Seureuke Village, Langkahan Sub District, Aceh Utara District, Aceh Province, Indonesia | 4° 53' 24.857" N | 97° 26' 38.791" E | 2 | 2 | 0 | No | 01 October 2022 |
| 202 | Siti Wahyuni | Seureuke Village, Langkahan Sub District, Aceh Utara District, Aceh Province, Indonesia | 4° 51' 56.565" N | 97° 25' 19.954" E | 0.68 | 0.68 | 8.8 | No | 03 October 2022 |
| 203 | Siti Wahyuni | Seureuke Village, Langkahan Sub District, Aceh Utara District, Aceh Province, Indonesia | 4° 52' 1.960" N | 97° 27' 4.606" E | 0.87 | 0.87 | 14.2 | No | 03 October 2022 |
| 204 | Subani | Seureuke Village, Langkahan Sub District, Aceh Utara District, Aceh Province, Indonesia | 4° 52' 8.046" N | 97° 26' 47.869" E | 0.77 | 0.77 | 7.2 | No | 07 October 2022 |
| 205 | Sudarmin | Seureuke Village, Langkahan Sub District, Aceh Utara District, Aceh Province, Indonesia | 4° 51' 30.170" N | 97° 27' 1.780" E | 1 | 1 | 16.4 | No | 07 October 2022 |
| 206 | Sudarno | Seureuke Village, Langkahan Sub District, Aceh Utara District, Aceh Province, Indonesia | 4° 54' 28.211" N | 97° 26' 21.993" E | 2 | 2 | 34 | No | 04 October 2022 |
| | | Seureuke Village, Langkahan Sub District, Aceh Utara District, Aceh Province, Indonesia | 4° 54' 4.394" N | 97° 25' 24.233" E | 0.25 | 0.25 | 4.2 | No | 04 October 2022 |
| 207 | Sudikan | Seureuke Village, Langkahan Sub District, Aceh Utara District, Aceh Province, Indonesia | 4° 53' 24.125" N | 97° 26' 27.569" E | 2 | 2 | 2 | No | 01 October 2022 |
| | | Seureuke Village, Langkahan Sub District, Aceh Utara District, Aceh Province, Indonesia | 4° 53' 1.439" N | 97° 26' 17.896" E | 2 | 2 | 2 | No | 01 October 2022 |
| | | Seureuke Village, Langkahan Sub District, Aceh Utara District, Aceh Province, Indonesia | 4° 53' 7.935" N | 97° 26' 6.154" E | 2 | 2 | 0 | No | 01 October 2022 |
| | | Seureuke Village, Langkahan Sub District, Aceh Utara District, Aceh Province, Indonesia | 4° 53' 22.764" N | 97° 26' 13.717" E | 2 | 2 | 0 | No | 01 October 2022 |
| 208 | Sugito | Seureuke Village, Langkahan Sub District, Aceh Utara District, Aceh Province, Indonesia | 4° 52' 6.894" N | 97° 26' 16.428" E | 1 | 1 | 13.2 | No | 07 October 2022 |
| 209 | Sugyo | Seureuke Village, Langkahan Sub District, Aceh Utara District, Aceh Province, Indonesia | 4° 53' 55.220" N | 97° 25' 51.582" E | 2 | 2 | 32 | No | 07 October 2022 |
| 210 | Suharsono | Seureuke Village, Langkahan Sub District, Aceh Utara District, Aceh Province, Indonesia | 4° 54' 26.775" N | 97° 26' 12.448" E | 2 | 2 | 31.2 | No | 07 October 2022 |
| 211 | Sujoko | Seureuke Village, Langkahan Sub District, Aceh Utara District, Aceh Province, Indonesia | 4° 52' 51.757" N | 97° 26' 8.074" E | 2 | 2 | 28 | No | 03 October 2022 |
| | | Seureuke Village, Langkahan Sub District, Aceh Utara District, Aceh Province, Indonesia | 4° 53' 8.203" N | 97° 25' 51.857" E | 0.73 | 0.73 | 27.2 | No | 03 October 2022 |
| 212 | Sukamb | Seureuke Village, Langkahan Sub District, Aceh Utara District, Aceh Province, Indonesia | 4° 52' 39.583" N | 97° 27' 6.895" E | 0.98 | 0.98 | 20.25 | No | 07 October 2022 |
| 213 | Suktana | Seureuke Village, Langkahan Sub District, Aceh Utara District, Aceh Province, Indonesia | 4° 51' 54.426" N | 97° 27' 14.007" E | 0.68 | 0.68 | 10.3 | No | 01 October 2022 |
| 214 | Sukardi | Seureuke Village, Langkahan Sub District, Aceh Utara District, Aceh Province, Indonesia | 4° 54' 14.488" N | 97° 26' 3.017" E | 0.495 | 0.495 | 9.2 | No | 01 October 2022 |
| | | Seureuke Village, Langkahan Sub District, Aceh Utara District, Aceh Province, Indonesia | 4° 54' 13.224" N | 97° 26' 2.060" E | 0.38 | 0.38 | 6.1 | No | 01 October 2022 |
| 215 | Sukari | Seureuke Village, Langkahan Sub District, Aceh Utara District, Aceh Province, Indonesia | 4° 53' 57.883" N | 97° 25' 57.168" E | 2 | 2 | 30 | No | 04 October 2022 |
| 216 | Sukasmi | Seureuke Village, Langkahan Sub District, Aceh Utara District, Aceh Province, Indonesia | 4° 52' 12.729" N | 97° 25' 20.351" E | 0.93 | 0.93 | 15 | No | 04 October 2022 |
| | | Seureuke Village, Langkahan Sub District, Aceh Utara District, Aceh Province, Indonesia | 4° 52' 14.660" N | 97° 25' 20.443" E | 0.61 | 0.61 | 13.4 | No | 04 October 2022 |
| 217 | Sukemi | Seureuke Village, Langkahan Sub District, Aceh Utara District, Aceh Province, Indonesia | 4° 52' 1.969" N | 97° 27' 1.413" E | 0.87 | 0.87 | 16 | No | 01 October 2022 |
| 218 | Sukirno | Seureuke Village, Langkahan Sub District, Aceh Utara District, Aceh Province, Indonesia | 4° 52' 1.909" N | 97° 26' 47.248" E | 1 | 1 | 16.6 | No | 01 October 2022 |
| 219 | Sulkan | Seureuke Village, Langkahan Sub District, Aceh Utara District, Aceh Province, Indonesia | 4° 53' 35.001" N | 97° 25' 21.434" E | 2 | 2 | 0 | No | 03 October 2022 |
| 220 | Sulistiani | Seureuke Village, Langkahan Sub District, Aceh Utara District, Aceh Province, Indonesia | 4° 51' 40.544" N | 97° 27' 3.803" E | 2 | 2 | 30 | No | 01 October 2022 |
| 221 | Sulistiono | Seureuke Village, Langkahan Sub District, Aceh Utara District, Aceh Province, Indonesia | 4° 53' 17.065" N | 97° 26' 40.392" E | 2 | 2 | 27.2 | No | 01 October 2022 |
| 222 | Sumanah | Seureuke Village, Langkahan Sub District, Aceh Utara District, Aceh Province, Indonesia | 4° 51' 56.593" N | 97° 27' 11.500" E | 1 | 1 | 20.25 | No | 07 October 2022 |
| 223 | Sumantri | Seureuke Village, Langkahan Sub District, Aceh Utara District, Aceh Province, Indonesia | 4° 53' 54.144" N | 97° 26' 35.767" E | 0.424 | 0.424 | 9.25 | No | 10 October 2022 |
| 224 | Sumhadi | Seureuke Village, Langkahan Sub District, Aceh Utara District, Aceh Province, Indonesia | 4° 53' 47.047" N | 97° 25' 22.687" E | 0.71 | 0.71 | 14.8 | No | 03 October 2022 |
| 225 | Sumiyati | Seureuke Village, Langkahan Sub District, Aceh Utara District, Aceh Province, Indonesia | 4° 53' 21.100" N | 97° 27' 11.774" E | 0.72 | 0.72 | 0 | No | 03 October 2022 |

| | | | | | | | | | |
|--------------|---------------------|---|------------------|-------------------|---------|---------|-------|----|-----------------|
| 226 | Sunardi | Seureuke Village, Langkahan Sub District, Aceh Utara District, Aceh Province, Indonesia | 4° 53' 11.703" N | 97° 26' 26.848" E | 2 | 2 | 0 | No | 03 October 2022 |
| | | Seureuke Village, Langkahan Sub District, Aceh Utara District, Aceh Province, Indonesia | 4° 53' 16.133" N | 97° 26' 27.415" E | 2 | 2 | 0 | No | 03 October 2022 |
| 227 | Sunardi B | Seureuke Village, Langkahan Sub District, Aceh Utara District, Aceh Province, Indonesia | 4° 53' 43.334" N | 97° 26' 19.305" E | 1 | 1 | 14.85 | No | 03 October 2022 |
| 228 | Sunaryo | Seureuke Village, Langkahan Sub District, Aceh Utara District, Aceh Province, Indonesia | 4° 53' 0.989" N | 97° 27' 40.518" E | 0.9167 | 0.9167 | 16.8 | No | 01 October 2022 |
| 229 | Supariono | Seureuke Village, Langkahan Sub District, Aceh Utara District, Aceh Province, Indonesia | 4° 51' 13.877" N | 97° 25' 32.625" E | 0.73 | 0.73 | 18.2 | No | 01 October 2022 |
| 230 | Supartun | Seureuke Village, Langkahan Sub District, Aceh Utara District, Aceh Province, Indonesia | 4° 55' 12.992" N | 97° 25' 40.186" E | 0.6792 | 0.6792 | 10.2 | No | 01 October 2022 |
| 231 | Supriadi | Seureuke Village, Langkahan Sub District, Aceh Utara District, Aceh Province, Indonesia | 4° 52' 15.723" N | 97° 25' 37.896" E | 0.2468 | 0.2468 | 4.4 | No | 10 October 2022 |
| 232 | Suratamen | Seureuke Village, Langkahan Sub District, Aceh Utara District, Aceh Province, Indonesia | 4° 52' 25.270" N | 97° 27' 43.330" E | 1 | 1 | 21.2 | No | 01 October 2022 |
| 233 | Surep | Seureuke Village, Langkahan Sub District, Aceh Utara District, Aceh Province, Indonesia | 4° 52' 42.594" N | 97° 26' 0.744" E | 2 | 2 | 32 | No | 01 October 2022 |
| 234 | Suriyanto | Seureuke Village, Langkahan Sub District, Aceh Utara District, Aceh Province, Indonesia | 4° 52' 49.644" N | 97° 27' 21.854" E | 1 | 1 | 23.25 | No | 07 October 2022 |
| 235 | Suryani | Seureuke Village, Langkahan Sub District, Aceh Utara District, Aceh Province, Indonesia | 4° 54' 24.324" N | 97° 25' 37.622" E | 2 | 2 | 0 | No | 07 October 2022 |
| | | Seureuke Village, Langkahan Sub District, Aceh Utara District, Aceh Province, Indonesia | 4° 54' 24.629" N | 97° 26' 40.221" E | 2 | 2 | 0 | No | 10 October 2022 |
| 236 | Subaj | Seureuke Village, Langkahan Sub District, Aceh Utara District, Aceh Province, Indonesia | 4° 51' 34.309" N | 97° 25' 17.287" E | 0.75 | 0.75 | 13.6 | No | 03 October 2022 |
| 237 | Sutanb | Seureuke Village, Langkahan Sub District, Aceh Utara District, Aceh Province, Indonesia | 4° 52' 42.429" N | 97° 26' 14.543" E | 2 | 2 | 25.5 | No | 07 October 2022 |
| 238 | Sutarmi | Seureuke Village, Langkahan Sub District, Aceh Utara District, Aceh Province, Indonesia | 4° 54' 15.190" N | 97° 26' 8.591" E | 2 | 2 | 34 | No | 10 October 2022 |
| 239 | Sutarmin | Seureuke Village, Langkahan Sub District, Aceh Utara District, Aceh Province, Indonesia | 4° 52' 32.550" N | 97° 25' 40.778" E | 0.73 | 0.73 | 16.1 | No | 10 October 2022 |
| 240 | Subawan | Seureuke Village, Langkahan Sub District, Aceh Utara District, Aceh Province, Indonesia | 4° 51' 37.578" N | 97° 26' 1.887" E | 2 | 2 | 0 | No | 03 October 2022 |
| 241 | Sutrisno | Seureuke Village, Langkahan Sub District, Aceh Utara District, Aceh Province, Indonesia | 4° 54' 18.294" N | 97° 25' 21.127" E | 2 | 2 | 0 | No | 03 October 2022 |
| 242 | Suwarno | Seureuke Village, Langkahan Sub District, Aceh Utara District, Aceh Province, Indonesia | 4° 53' 20.911" N | 97° 25' 51.911" E | 0.9542 | 0.9542 | 18.2 | No | 07 October 2022 |
| | | Seureuke Village, Langkahan Sub District, Aceh Utara District, Aceh Province, Indonesia | 4° 53' 20.940" N | 97° 25' 49.331" E | 0.8916 | 0.8916 | 17.2 | No | 07 October 2022 |
| 243 | Suyadyono | Seureuke Village, Langkahan Sub District, Aceh Utara District, Aceh Province, Indonesia | 4° 55' 19.579" N | 97° 26' 30.161" E | 0.91 | 0.91 | 17.2 | No | 10 October 2022 |
| 244 | Suyantb | Seureuke Village, Langkahan Sub District, Aceh Utara District, Aceh Province, Indonesia | 4° 52' 28.009" N | 97° 25' 39.730" E | 0.96 | 0.96 | 16.7 | No | 03 October 2022 |
| 245 | Suyono | Seureuke Village, Langkahan Sub District, Aceh Utara District, Aceh Province, Indonesia | 4° 52' 5.815" N | 97° 25' 13.132" E | 0.43 | 0.43 | 6.85 | No | 10 October 2022 |
| 246 | Sya bari | Seureuke Village, Langkahan Sub District, Aceh Utara District, Aceh Province, Indonesia | 4° 51' 40.007" N | 97° 26' 33.289" E | 0.4 | 0.4 | 9.4 | No | 07 October 2022 |
| 247 | Syafi | Seureuke Village, Langkahan Sub District, Aceh Utara District, Aceh Province, Indonesia | 4° 52' 43.213" N | 97° 28' 1.067" E | 0.88 | 0.88 | 20.25 | No | 10 October 2022 |
| 248 | Taat | Seureuke Village, Langkahan Sub District, Aceh Utara District, Aceh Province, Indonesia | 4° 52' 10.676" N | 97° 27' 30.054" E | 1 | 1 | 15.2 | No | 03 October 2022 |
| 249 | Tardi | Seureuke Village, Langkahan Sub District, Aceh Utara District, Aceh Province, Indonesia | 4° 54' 20.749" N | 97° 25' 53.428" E | 2 | 2 | 0 | No | 07 October 2022 |
| | | Seureuke Village, Langkahan Sub District, Aceh Utara District, Aceh Province, Indonesia | 4° 53' 29.718" N | 97° 26' 14.182" E | 2 | 2 | 28.2 | No | 07 October 2022 |
| | | Seureuke Village, Langkahan Sub District, Aceh Utara District, Aceh Province, Indonesia | 4° 53' 10.687" N | 97° 26' 44.973" E | 2 | 2 | 27.2 | No | 07 October 2022 |
| | | Seureuke Village, Langkahan Sub District, Aceh Utara District, Aceh Province, Indonesia | 4° 53' 12.516" N | 97° 26' 41.359" E | 2 | 2 | 31.2 | No | 07 October 2022 |
| 250 | Thomas Riyo | Seureuke Village, Langkahan Sub District, Aceh Utara District, Aceh Province, Indonesia | 4° 52' 51.053" N | 97° 27' 52.242" E | 0.87 | 0.87 | 15.8 | No | 10 October 2022 |
| 251 | Tuginin | Seureuke Village, Langkahan Sub District, Aceh Utara District, Aceh Province, Indonesia | 4° 51' 57.783" N | 97° 27' 7.049" E | 1 | 1 | 20.25 | No | 10 October 2022 |
| 252 | Tugyo | Seureuke Village, Langkahan Sub District, Aceh Utara District, Aceh Province, Indonesia | 4° 53' 5.320" N | 97° 26' 0.992" E | 2 | 2 | 0 | No | 10 October 2022 |
| 253 | Tukini | Seureuke Village, Langkahan Sub District, Aceh Utara District, Aceh Province, Indonesia | 4° 51' 54.335" N | 97° 26' 51.012" E | 1 | 1 | 17.25 | No | 03 October 2022 |
| | | Seureuke Village, Langkahan Sub District, Aceh Utara District, Aceh Province, Indonesia | 4° 51' 21.187" N | 97° 25' 31.948" E | 1 | 1 | 16.25 | No | 03 October 2022 |
| 254 | Tumini | Seureuke Village, Langkahan Sub District, Aceh Utara District, Aceh Province, Indonesia | 4° 54' 4.279" N | 97° 26' 13.074" E | 2 | 2 | 24 | No | 10 October 2022 |
| 255 | Udi | Seureuke Village, Langkahan Sub District, Aceh Utara District, Aceh Province, Indonesia | 4° 52' 53.005" N | 97° 28' 0.856" E | 1 | 1 | 18.4 | No | 03 October 2022 |
| 256 | Udin | Seureuke Village, Langkahan Sub District, Aceh Utara District, Aceh Province, Indonesia | 4° 52' 24.107" N | 97° 27' 25.241" E | 0.95 | 0.95 | 18.4 | No | 10 October 2022 |
| 257 | Urip Neng Af | Seureuke Village, Langkahan Sub District, Aceh Utara District, Aceh Province, Indonesia | 4° 51' 53.697" N | 97° 27' 16.253" E | 0.81 | 0.81 | 17.25 | No | 03 October 2022 |
| 258 | Usadi | Seureuke Village, Langkahan Sub District, Aceh Utara District, Aceh Province, Indonesia | 4° 51' 51.738" N | 97° 25' 15.753" E | 1 | 1 | 19.8 | No | 07 October 2022 |
| 259 | Ustriani | Seureuke Village, Langkahan Sub District, Aceh Utara District, Aceh Province, Indonesia | 4° 53' 4.382" N | 97° 26' 24.194" E | 2 | 2 | 40 | No | 10 October 2022 |
| 260 | Wahono | Seureuke Village, Langkahan Sub District, Aceh Utara District, Aceh Province, Indonesia | 4° 51' 41.493" N | 97° 26' 40.650" E | 2 | 2 | 36 | No | 03 October 2022 |
| 261 | Wahyu Trijoko | Seureuke Village, Langkahan Sub District, Aceh Utara District, Aceh Province, Indonesia | 4° 51' 47.644" N | 97° 25' 20.698" E | 0.56 | 0.56 | 10.2 | No | 10 October 2022 |
| 262 | Wakidi Ahmad Fauzan | Seureuke Village, Langkahan Sub District, Aceh Utara District, Aceh Province, Indonesia | 4° 54' 17.649" N | 97° 25' 34.148" E | 2 | 2 | 0 | No | 03 October 2022 |
| | | Seureuke Village, Langkahan Sub District, Aceh Utara District, Aceh Province, Indonesia | 4° 53' 38.477" N | 97° 25' 33.665" E | 2 | 2 | 0 | No | 03 October 2022 |
| 263 | Waldianto | Seureuke Village, Langkahan Sub District, Aceh Utara District, Aceh Province, Indonesia | 4° 52' 14.252" N | 97° 27' 10.297" E | 0.24 | 0.24 | 6.6 | No | 10 October 2022 |
| 264 | Warino | Seureuke Village, Langkahan Sub District, Aceh Utara District, Aceh Province, Indonesia | 4° 52' 52.941" N | 97° 26' 16.650" E | 2 | 2 | 32 | No | 03 October 2022 |
| 265 | Warmi | Seureuke Village, Langkahan Sub District, Aceh Utara District, Aceh Province, Indonesia | 4° 54' 7.573" N | 97° 25' 51.575" E | 2 | 2 | 32 | No | 03 October 2022 |
| 266 | Warmin | Seureuke Village, Langkahan Sub District, Aceh Utara District, Aceh Province, Indonesia | 4° 54' 31.481" N | 97° 25' 47.525" E | 2 | 2 | 0 | No | 03 October 2022 |
| 267 | Warsidi | Seureuke Village, Langkahan Sub District, Aceh Utara District, Aceh Province, Indonesia | 4° 51' 48.999" N | 97° 24' 51.112" E | 1.19 | 1.19 | 18.5 | No | 03 October 2022 |
| 268 | Wasbno | Seureuke Village, Langkahan Sub District, Aceh Utara District, Aceh Province, Indonesia | 4° 52' 2.335" N | 97° 27' 22.803" E | 0.9 | 0.9 | 0 | No | 10 October 2022 |
| 269 | Wafi | Seureuke Village, Langkahan Sub District, Aceh Utara District, Aceh Province, Indonesia | 4° 53' 17.966" N | 97° 26' 19.324" E | 2 | 2 | 0 | No | 03 October 2022 |
| 270 | Yusri | Seureuke Village, Langkahan Sub District, Aceh Utara District, Aceh Province, Indonesia | 4° 52' 19.318" N | 97° 27' 45.615" E | 0.90 | 0.90 | 15.25 | No | 10 October 2022 |
| TOTAL | | | | | 568.655 | 568.655 | 5.802 | | |

Locations maps of the unit certifications are:



Mutuagung Lestari, is also known Mutu International (MUTU), and has started as inspection, laboratory, and Certification body since 1990. As a private national company and supported with highly committed professionals, MUTU has gained recognition nationally and internationally. Since June 2003, MUTU has received recognition from the Ministry of Agriculture, Forestry, and Fishery of Japan (MAFF) as registered overseas certification body (ROCB). MUTU certify and mark products with Japan agriculture standard (JAS) covering Indonesia, Myanmar, Cambodia, Malaysia, Vietnam, Timor Leste, Philippines, Papua New Guinea and China. MUTU is the first ROCB in Asia. National Accreditation Committee has accredited MUTU as Quality Management System certification body (ISO 9001:2015) and Environmental Management System certification body (ISO 14001:2015). Indonesia Ecolabelling Institute (LEI) has also accredited MUTU as Sustainable Forest Management System certification body, Certification Body of Indonesian Sustainable Palm Oil (ISPO), Since March 2014, MUTU has been accredited by ASI (Accreditation Services International) as a RSPO certification body.

The auditor team for the certification assessment will be led of **Moh. Arif Yusni** from PT Mutuagung Lestari, consist of:

| Audit Team | Role/ Area of Requirement | Qualification and Experience |
|--------------------|--|--|
| Moh Arif Yusni | Legality, TBP, Partial Certification, Environment aspect, Waste Management, GHG and Conservation | Indonesian citizen. Bachelor of Agriculture, majoring in Plant Protection. Has experience as an operational staff at a private oil palm plantation company in Indonesia on 2010 to 2012. Has attended several trainings, i.e.: ISO 19011, ISO 9001; ISO 14001, SA 8000, RSPO lead auditor course in 2014, ISPO lead auditor, OHS expert, OHS auditor based on National Government No. 50/2012, SCCS, RSPO and ISPO Lead auditor refresher course in 2021 etc. Has conducting ISPO, RSPO and MSPO audit as an auditor and lead auditor with expertise on best management practices for estate and mill, legality, worker welfare, safety, social, environment, conservation, transparency, long term economic management plan and supply chain for palm oil mill aspects. |
| Radytio Puspanjana | Environment, HCV, Social, and GHG Aspects | Indonesian Citizen. Bachelor of Agriculture, majoring in Soil Science. Agriculture Faculty. He was working as honorarium Officer at the Riau Province Plantation Agency in the division of huge estate for 1 year. The participated trainings are Survey and Mapping (GIS) Training which was held by National GMTI, ISPO auditor training, ISO 9001/2008 auditor training, ISO 14001/2004 auditor training, IHT Geospatial Information System, IHT High Conservation Value, IHT Environmental Impact Assessment, IHT Green House Gas and RSPO Lead Auditor Course by Checkmark Training. Since 2015 has been following many audit as auditor base on Best Management Practice and Environment. |
| Kiki Fadli | Best Management Practice and OHS | Bachelor of Agricultural Engineering, Agricultural Engineering Study Program. Has experience working in the sustainability department in private and state-owned oil palm plantations. Has attended training on Lead Auditor ISPO, Lead Auditor RSPO, General OHS Expert, ISO 9001:2008, ISO 14001:2015, ISO 17021, ISO 17065, HCV, SMK3. |

PT Mutuagung Lestari invites stakeholders to provide comments (if any) on any of the following matters related to the site for assessment:

- a. Environmental protection within the estate or mill including use of pesticide and waste management.
- b. Biodiversity within the estate and mill
- c. Contribution for local development and opportunities for employment
- d. Provision of housing, sanitation, facility and education support
- e. Other issues related with the assessment

Comments accepted within 30 days from the date of this latter will be considered in the certification assessment. Please include the following details in case we may need to contact for your clarification on any issued raised.

Name : _____
Address : _____
Telephone : _____
Fax : _____

If you wish your comments to be treated confidentiality or remain anonymous, please mark your reply 'CONFIDENTIAL'. Please send your comments to:

Thank you for your comments and feedback.

PT MUTUAGUNG LESTARI

Leonada

Operations Manager

Jl. Raya Bogor Km. 33.5 No. 19
Cimanggis, Depok - Indonesia 16953
Telephone: (+62-21) 8740202
Fax: (+62-21) 87740745/46
agri@mutucertification.com
web : www.mutucertification.com

**PERKUMPULAN SEJAHTERA PELITA
NUSANTARA**

Abdul Azis

Project Lead

Jalan Exxon MOI Blok A Desa Seureuke,
Kecamatan Langkahan, Kabupaten Aceh Utara,
Provinsi Aceh, Indonesia
Telephone: (+62) 813 7681 0646
abdul.azis@koltiva.com

Yours faithfully,



mutu
international

Irham Budiman

Director of PT Mutuagung Lestari