

Date: 22 June 2023

Notification of RSPO Milestone-B of Koperasi Produsen Bumi Sawit Tamiang (RSPO Membership Number: 1-0444-23-000-00, 20 April 2023)

Dear Stakeholders,

Koperasi Produsen Bumi Sawit Tamiang has applied to Mutuagung Lestari and will conduct audi Milestone-B, located at Harum Sari Village, Tamiang Hulu Sub District, Aceh Tamiang District, Aceh Province, Indonesia against the requirement of RSPO Independent Smallholder Standard, Indonesia National Interpretation for the Production of Sustainable Palm Oil 2020, endorsed by the RSPO Board of Governors on 14 February 2022.

Koperasi Produsen Bumi Sawit Tamiang has been registered on PalmTrace IT platform with member ID RSPO_PO1000015657. Mutuagung Lestari has arranged to conduct the assessment to Perkumpulan Petani Swadaya Bangka Lestari on **10 to 12 August 2023**.

Name of Group Manager	Group Manager Address	ISH Group Location	GPS Reference	
			Latitude	Longitude
Suriya Saputra	Harum Sari Village, Tamiang Hulu Sub District, Aceh Tamiang District, Aceh Province, Indonesia	Serba Village, Bandar Pusaka Sub District, Aceh Tamiang District, Aceh Province, Indonesia. Postal Code: 24478	N 4° 16' 9.975"	E 97° 56' 34.642"

Bumi Sawit Tamiang Producer Cooperative is an oil palm farmers organization that formed and Authorized By The Ministry Of Law And Human Rights on march 23rd 2022 with the number AHU-0003634.Ah.01.29 Tahun 2022. This cooperative is addressed at Munyang Keramat Street No.21, Dusun Alur Hitam, Serba Village, Bandar Pusaka Subdistrict, Aceh Tamiang District Aceh Province.

Bumi Sawit Tamiang Producer Cooperative was formed with the aim of becoming a forum for oil palm farmers to apply the principles of sustainable palm oil (RSPO Independent Smallholder). In realizing this goal, Bumi Sawit Tamiang Producer Cooperative is supported by various parties including:

1. Aceh Tamiang Disctict Government
2. Aceh Tamiang District Land Agency
3. Departement of Agryculture and Plantation of Aceh Tamiang District
4. Pusat Unggulan Perkebunan Lestari of Aceh Tamiang
5. Leuser Conservation Forum
6. Inisiatif Dagang Hijau
7. And Several Companies of Palm Oil Plantation such as:
 - PT. Musim Mas
 - PT. Socfin Indonesia
 - PT. Bumi Sama Ganda
 - PT. Semadam
 - PT. Pati Sari
 - PT. Koompasia Enviro Institute

Each parties plays a role in their respective field to support compliance with RSPO principles and criteria for Independent Smallholders, starting from legality to environmental compliance.

Currently, Bumi Sawit Tamiang Cooperative consist of 532 Farmers, 785 plots of land with total land area of ±891 hectares which divided into 11 cluster, namely:

1. Cluster Subur Makmur
2. Cluster Jaya Tani
3. Cluster Pantai Jaya
4. Cluster Durian Sawit
5. Cluster Citra Karya
6. Cluster Aman Sejahtera

7. Cluster Tawar Bengi
8. Cluster Blangka Bersatu
9. Cluster Ingin Maju
10. Cluster Wonosari
11. Cluster Wonosari Keramat Jaya

To build the capacity of farmers, Bumi Sawit Tamiang Producer Cooperative organized several Training such as:

1. Good Agricultural Practice Training
2. RSPO Awareness Training
3. Training on Making Standard Operating Procedures
4. Internal Audit Training
5. Internal Audit

List of Group Members Koperasi Produsen Bumi Sawit Tamiang

No	Name of Farmer	Location	GPS Reference		Area Summary (Ha)		Forecasted Annual FFB Production (MT)	Any Liasibilities? Yes/No	Date of Join on the Group
			Latitude	Longitude	Total Certified Area	Planted Area			
1	Abbas R1	Sulum Village, Sekerek Sub District, Tamiang District, Aceh Province, Indonesia	4° 19' 15.68"E	97° 51' 17.389"N	0.34	0.34	6.08	No	09 July 2022
	Abbas R2	Sulum Village, Sekerek Sub District, Tamiang District, Aceh Province, Indonesia	4° 19' 6.642"E	97° 51' 22.248"N	0.51	0.51	9.23	No	09 July 2022
	Abbas R3	Sulum Village, Sekerek Sub District, Tamiang District, Aceh Province, Indonesia	4° 18' 45.732"E	97° 51' 20.397"N	0.90	0.90	16.20	No	09 July 2022
2	Abdul Hamid	Pengdam Village, Bandar Pusaka Sub District, Tamiang District, Aceh Province, Indonesia	4° 17' 46.853"E	97° 48' 49.416"N	2.52	2.52	45.36	No	09 July 2022
3	Abdul Hamid 1	Juar Village, Sekerek Sub District, Tamiang District, Aceh Province, Indonesia	4° 18' 28.966"E	97° 51' 44.225"N	1.43	1.43	25.77	No	09 July 2022
	Abdul Hamid 2	Juar Village, Sekerek Sub District, Tamiang District, Aceh Province, Indonesia	4° 18' 29.982"E	97° 51' 59.545"N	1.71	1.71	30.71	No	09 July 2022
4	Abdul Jalil	Sulum Village, Sekerek Sub District, Tamiang District, Aceh Province, Indonesia	4° 18' 10.710"E	97° 51' 2.717"N	0.97	0.97	17.48	No	09 July 2022
5	Abdul Karim Sembiring	Pengdam Village, Bandar Pusaka Sub District, Tamiang District, Aceh Province, Indonesia	4° 18' 20.625"E	97° 50' 16.995"N	0.91	0.91	16.38	No	09 July 2022
6	Abdul Malik 1	Sulum Village, Sekerek Sub District, Tamiang District, Aceh Province, Indonesia	4° 18' 50.937"E	97° 51' 3.937"N	0.49	0.49	8.90	No	09 July 2022
	Abdul Malik 2	Pengdam Village, Sekerek Sub District, Tamiang District, Aceh Province, Indonesia	4° 18' 26.365"E	97° 50' 53.880"N	0.54	0.54	9.73	No	09 July 2022
7	Abdul Rahman	Sulum Village, Sekerek Sub District, Tamiang District, Aceh Province, Indonesia	4° 20' 49.317"E	97° 51' 6.799"N	4.18	4.18	75.16	No	09 July 2022
8	Abdul Rani	Pantai Cempaka Village, Bandar Pusaka Sub District, Tamiang District, Aceh Province, Indonesia	4° 17' 9.753"E	97° 50' 40.335"N	3.77	3.77	67.86	No	09 July 2022
	Abdul Rasiid 1	Juar Village, Sekerek Sub District, Tamiang District, Aceh Province, Indonesia	4° 18' 28.015"E	97° 51' 54.407"N	0.06	0.06	1.11	No	09 July 2022
	Abdul Rasiid 2	Juar Village, Sekerek Sub District, Tamiang District, Aceh Province, Indonesia	4° 18' 30.202"E	97° 51' 54.540"N	0.22	0.22	3.95	No	09 July 2022
9	Abdul Rasiid 3	Juar Village, Sekerek Sub District, Tamiang District, Aceh Province, Indonesia	4° 18' 29.842"E	97° 52' 54.718"N	0.86	0.86	15.39	No	09 July 2022
	Abdul Zamani	Pematang Duri Village, Sekerek Sub District, Tamiang District, Aceh Province, Indonesia	4° 18' 55.493"E	97° 52' 14.717"N	0.84	0.84	15.06	No	09 July 2022
10	Abdullah A	Pengdam Village, Bandar Pusaka Sub District, Tamiang District, Aceh Province, Indonesia	4° 18' 16.460"E	97° 50' 24.609"N	0.55	0.55	9.98	No	09 July 2022
12	Abdullah B 1	Sulum Village, Sekerek Sub District, Tamiang District, Aceh Province, Indonesia	4° 18' 14.181"E	97° 51' 41.181"N	0.23	0.23	4.14	No	09 July 2022
	Abdullah B 2	Sulum Village, Sekerek Sub District, Tamiang District, Aceh Province, Indonesia	4° 18' 16.066"E	97° 51' 24.916"N	0.36	0.36	6.53	No	09 July 2022
13	Abdullah C	Juar Village, Sekerek Sub District, Tamiang District, Aceh Province, Indonesia	4° 18' 27.589"E	97° 52' 16.953"N	0.53	0.53	9.58	No	09 July 2022
14	Abdullah H 1	Juar Village, Sekerek Sub District, Tamiang District, Aceh Province, Indonesia	4° 18' 22.457"E	97° 52' 3.895"N	0.85	0.85	15.26	No	09 July 2022
	Abdullah H 2	Juar Village, Sekerek Sub District, Tamiang District, Aceh Province, Indonesia	4° 18' 42.072"E	97° 52' 5.885"N	0.28	0.28	5.05	No	09 July 2022
15	Abdullah H 3	Juar Village, Sekerek Sub District, Tamiang District, Aceh Province, Indonesia	4° 17' 35.613"E	97° 51' 36.164"N	1.07	1.07	19.26	No	09 July 2022
	Abu Bakar 1	Pengdam Village, Bandar Pusaka Sub District, Tamiang District, Aceh Province, Indonesia	4° 17' 55.361"E	97° 49' 23.837"N	1.01	1.01	18.09	No	09 July 2022
16	Abu Bakar 2	Sulum Village, Sekerek Sub District, Tamiang District, Aceh Province, Indonesia	4° 18' 56.262"E	97° 52' 5.230"N	1.25	1.25	23.58	No	09 July 2022
	Abu Samah 1	Pantai Cempaka Village, Sekerek Sub District, Tamiang District, Aceh Province, Indonesia	4° 18' 45.371"E	97° 51' 43.369"N	0.58	0.58	10.13	No	09 July 2022
17	Abu Samah 2	Pematang Duri Village, Sekerek Sub District, Tamiang District, Aceh Province, Indonesia	4° 17' 6.002"E	97° 53' 11.365"N	1.00	1.00	18.00	No	09 July 2022
	Abu Thalib	Pematang Duri Village, Sekerek Sub District, Tamiang District, Aceh Province, Indonesia	4° 19' 28.575"E	97° 53' 20.711"N	4.00	4.00	72.00	No	09 July 2022
18	Abuya	Pantai Cempaka Village, Bandar Pusaka Sub District, Tamiang District, Aceh Province, Indonesia	4° 17' 50.592"E	97° 50' 28.131"N	1.00	1.00	18.00	No	09 July 2022
	Adnan 2	Pengdam Village, Bandar Pusaka Sub District, Tamiang District, Aceh Province, Indonesia	4° 18' 14.903"E	97° 50' 9.861"N	3.02	3.02	54.33	No	09 July 2022
19	Adnand Soetimo	Blang Kanda Village, Bandar Pusaka Sub District, Tamiang District, Aceh Province, Indonesia	4° 18' 20.877"E	97° 57' 38.490"N	0.68	0.68	12.29	No	09 July 2022
21	Ali Sula Dama	Blang Kanda Village, Bandar Pusaka Sub District, Tamiang District, Aceh Province, Indonesia	4° 18' 52.946"E	97° 57' 23.882"N	1.42	1.42	25.52	No	09 July 2022
22	Ahmad 1	Sulum Village, Sekerek Sub District, Tamiang District, Aceh Province, Indonesia	4° 18' 19.520"E	97° 51' 24.609"N	1.19	1.19	21.48	No	09 July 2022
	Ahmad 2	Sulum Village, Sekerek Sub District, Tamiang District, Aceh Province, Indonesia	4° 18' 22.242"E	97° 51' 41.181"N	1.68	1.68	30.21	No	09 July 2022
23	Aliar Rahmani	Harum Sari Village, Tamiang Hulu Sub District, Tamiang District, Aceh Province, Indonesia	4° 17' 52.674"E	97° 54' 31.346"N	1.00	1.00	18.00	No	09 July 2022
	Ajum Wija Prangga	Wonosari Village, Tamiang Hulu Sub District, Tamiang District, Aceh Province, Indonesia	4° 18' 55.212"E	97° 52' 56.348"N	1.15	1.15	20.70	No	09 July 2022
25	Agung Suhardi	Wonosari Village, Tamiang Hulu Sub District, Tamiang District, Aceh Province, Indonesia	4° 17' 57.667"E	97° 53' 12.344"N	1.80	1.80	32.40	No	09 July 2022
	Agus Suhananto	Blang Kanda Village, Bandar Pusaka Sub District, Tamiang District, Aceh Province, Indonesia	4° 18' 13.356"E	97° 58' 36.095"N	0.39	0.39	7.01	No	09 July 2022
27	Ahmad 1	Sulum Village, Sekerek Sub District, Tamiang District, Aceh Province, Indonesia	4° 19' 6.827"E	97° 51' 15.824"N	0.08	0.08	1.40	No	09 July 2022
	Ahmad 2	Sulum Village, Sekerek Sub District, Tamiang District, Aceh Province, Indonesia	4° 18' 16.608"E	97° 51' 16.431"N	0.51	0.51	9.18	No	09 July 2022
28	Ahmad 3	Sulum Village, Sekerek Sub District, Tamiang District, Aceh Province, Indonesia	4° 18' 19.865"E	97° 51' 20.812"N	0.65	0.65	11.70	No	09 July 2022
	Ahmad 4	Juar Village, Sekerek Sub District, Tamiang District, Aceh Province, Indonesia	4° 18' 43.491"E	97° 51' 32.854"N	0.44	0.44	7.92	No	09 July 2022
29	Ahmad 5	Pantai Cempaka Village, Bandar Pusaka Sub District, Tamiang District, Aceh Province, Indonesia	4° 18' 37.124"E	97° 52' 17.695"N	1.07	1.07	19.28	No	09 July 2022
	Ahmad 6	Pengdam Village, Bandar Pusaka Sub District, Tamiang District, Aceh Province, Indonesia	4° 18' 44.480"E	97° 49' 32.382"N	0.42	0.42	7.56	No	09 July 2022
30	Abar	Aur Jambu Village, Bandar Pusaka Sub District, Tamiang District, Aceh Province, Indonesia	4° 18' 27.174"E	97° 58' 47.909"N	1.62	1.62	29.11	No	09 July 2022
	Abi Akbar 1	Bengkayang Village, Bandar Pusaka Sub District, Tamiang District, Aceh Province, Indonesia	4° 18' 10.832"E	97° 48' 33.247"N	1.50	1.50	27.00	No	09 July 2022
31	Abi Akbar 2	Baubudulang Village, Bandar Pusaka Sub District, Tamiang District, Aceh Province, Indonesia	4° 18' 51.388"E	97° 49' 16.640"N	0.30	0.30	5.40	No	09 July 2022
	Abi Badi	Pematang Duri Village, Sekerek Sub District, Tamiang District, Aceh Province, Indonesia	4° 18' 38.544"E	97° 52' 36.891"N	1.50	1.50	27.00	No	09 July 2022
32	Abi Kasim 1	Bengkayang Village, Bandar Pusaka Sub District, Tamiang District, Aceh Province, Indonesia	4° 18' 41.361"E	97° 48' 49.495"N	1.00	1.00	18.00	No	09 July 2022
	Abi Kasim 2	Bengkayang Village, Bandar Pusaka Sub District, Tamiang District, Aceh Province, Indonesia	4° 18' 42.450"E	97° 49' 30.103"N	2.78	2.78	50.08	No	09 July 2022
34	Ali Sufi	Blang Kanda Village, Bandar Pusaka Sub District, Tamiang District, Aceh Province, Indonesia	4° 18' 19.880"E	97° 58' 36.549"N	1.42	1.42	25.50	No	09 July 2022
	Ali Supri	Wonosari Village, Tamiang Hulu Sub District, Tamiang District, Aceh Province, Indonesia	4° 18' 36.073"E	97° 54' 22.831"N	1.59	1.59	28.55	No	09 July 2022
35	Alyes	Pematang Duri Village, Sekerek Sub District, Tamiang District, Aceh Province, Indonesia	4° 18' 57.590"E	97° 52' 29.403"N	1.00	1.00	18.00	No	09 July 2022
	Alwi	Blang Kanda Village, Bandar Pusaka Sub District, Tamiang District, Aceh Province, Indonesia	4° 18' 57.171"E	97° 57' 1.528"N	1.54	1.54	27.86	No	09 July 2022
36	Aminah A	Bengkayang Village, Bandar Pusaka Sub District, Tamiang District, Aceh Province, Indonesia	4° 18' 21.394"E	97° 48' 12.204"N	1.80	1.80	32.40	No	09 July 2022
	Aminah B 1	Juar Village, Sekerek Sub District, Tamiang District, Aceh Province, Indonesia	4° 18' 42.405"E	97° 51' 38.164"N	0.79	0.79	14.20	No	09 July 2022
38	Amin B 2	Juar Village, Sekerek Sub District, Tamiang District, Aceh Province, Indonesia	4° 18' 43.979"E	97° 51' 49.348"N	1.27	1.27	22.82	No	09 July 2022
	Amin S	Harum Sari Village, Tamiang Hulu Sub District, Tamiang District, Aceh Province, Indonesia	4° 18' 33.923"E	97° 54' 59.328"N	2.00	2.00	36.00	No	09 July 2022
41	Andan 1	Pengdam Village, Bandar Pusaka Sub District, Tamiang District, Aceh Province, Indonesia	4° 18' 23.488"E	97° 48' 23.488"N	1.32	1.32	23.76	No	09 July 2022
	Andika 1	Pematang Duri Village, Sekerek Sub District, Tamiang District, Aceh Province, Indonesia	4° 18' 34.758"E	97° 52' 36.433"N	1.70	1.70	30.60	No	09 July 2022
42	Andika 2	Pematang Duri Village, Sekerek Sub District, Tamiang District, Aceh Province, Indonesia	4° 18' 29.652"E	97° 52' 38.749"N	0.50	0.50	9.00	No	09 July 2022
	Angkasa 1	Bengkayang Village, Bandar Pusaka Sub District, Tamiang District, Aceh Province, Indonesia	4° 18' 30.736"E	97° 49' 10.607"N	0.70	0.70	12.60	No	09 July 2022
43	Angkasa 2	Bengkayang Village, Bandar Pusaka Sub District, Tamiang District, Aceh Province, Indonesia	4° 18' 33.309"E	97° 49' 13.516"N	0.71	0.71	12.83	No	09 July 2022
	Angkasa 3	Bengkayang Village, Bandar Pusaka Sub District, Tamiang District, Aceh Province, Indonesia	4° 18' 46.165"E	97° 49' 28.517"N	0.40	0.40	7.20	No	09 July 2022
44	Angkasa 4	Bengkayang Village, Bandar Pusaka Sub District, Tamiang District, Aceh Province, Indonesia	4° 18' 26.483"E	97° 49' 5.455"N	1.00	1.00	18.00	No	09 July 2022
	Anis Hawan 1	Bengkayang Village, Bandar Pusaka Sub District, Tamiang District, Aceh Province, Indonesia	4° 18' 35.484"E	97° 48' 43.940"N	0.40	0.40	7.20	No	09 July 2022
45	Anis Hawan 2	Bengkayang Village, Bandar Pusaka Sub District, Tamiang District, Aceh Province, Indonesia	4° 18' 33.616"E	97° 48' 33.616"N	0.70	0.70	12.60	No	09 July 2022
	Ano	Blang Kanda Village, Bandar Pusaka Sub District, Tamiang District, Aceh Province, Indonesia	4° 18' 5.693"E	97° 57' 40.805"N	1.16	1.16	20.96	No	09 July 2022
46	Abayah 1	Juar Village, Sekerek Sub District, Tamiang District, Aceh Province, Indonesia	4° 17' 59.970"E	97° 51' 57.917"N	0.21	0.21	3.71	No	09 July 2022
	Abayah 2	Juar Village, Sekerek Sub District, Tamiang District, Aceh Province, Indonesia	4° 17' 45.035"E	97° 51' 27.542"N	0.27	0.27	4.81	No	09 July 2022
47	Andan 1	Bengkayang Village, Bandar Pusaka Sub District, Tamiang District, Aceh Province, Indonesia	4° 17' 32.601"E	97° 51' 9.855"N	2.00	2.00	36.00	No	09 July 2022
	Andan 2	Pantai Cempaka Village, Bandar Pusaka Sub District, Tamiang District, Aceh Province, Indonesia	4° 18' 12.003"E	97° 49' 7.051"N	0.65	0.65	11.70	No	09 July 2022
48	Andan 3	Baling Karang Village, Sekerek Sub District, Tamiang District, Aceh Province, Indonesia	4° 18' 35.005"E	97° 49' 25.983"N	4.00	4.00	72.00	No	09 July 2022
	Ahlin Effendi	Pantai Cempaka Village, Bandar Pusaka Sub District, Tamiang District, Aceh Province, Indonesia	4° 17' 32.973"E	97° 51' 23.884"N	0.84	0.84	15.12	No	09 July 2022
49	Amangsyah	Harum Sari Village, Tamiang Hulu Sub District, Tamiang District, Aceh Province, Indonesia	4° 18' 31.303"E	97° 54' 20.303"N	1.00	1.00	18.00	No	09 July 2022
	Aminia	Pengdam Village, Bandar Pusaka Sub District, Tamiang District, Aceh Province, Indonesia	4° 17' 41.096"E	97° 50' 10.740"N	0.72	0.72	12.96	No	09 July 2022
51	Amia Elendi 1	Juar Village, Sekerek Sub District, Tamiang District, Aceh Province, Indonesia	4° 17' 59.772"E	97° 52' 1.947"N	0.13	0.13	2.36	No	09 July 2022
	Amia Elendi 2	Juar Village, Sekerek Sub District, Tamiang District, Aceh Province, Indonesia	4° 17' 59.571"E	97° 52' 3.052"N	0.15	0.15	2.70	No	09 July 2022
52	Ayah	Bengkayang Village, Bandar Pusaka Sub District, Tamiang District, Aceh Province, Indonesia	4° 18' 36.044"E	97° 49' 6.419"N	0.60	0.60	10.80	No	09 July 2022
	Ayah 2	Pengdam Village, Bandar Pusaka Sub District, Tamiang District, Aceh Province, Indonesia	4° 17' 57.322"E	97° 49' 12.906"N	2.01	2.01	36.16	No	09 July 2022
53	Aim	Bengkayang Village, Bandar Pusaka Sub District, Tamiang District, Aceh Province, Indonesia	4° 18' 40.790"E	97° 49' 28.355"N	1.04	1.04	18.72	No	09 July 2022
	Badki 1	Pantai Cempaka Village, Bandar Pusaka Sub District, Tamiang District, Aceh Province, Indonesia	4° 17' 30.383"E	97° 50' 41.359"N	1.80	1.80	32.40	No	09 July 2022
55	Badki 2	Bengkayang Village, Bandar Pusaka Sub District, Tamiang District, Aceh Province, Indonesia	4° 18' 31.687"E	97° 49' 6.011"N	2.00	2.00	36.00	No	09 July 2022
	Badki 3	Pematang Duri Village, Sekerek Sub District, Tamiang District, Aceh Province, Indonesia	4° 18' 35.560"E	97° 49' 38.825"N	0.39	0.39	7.04	No	09 July 2022
57	Bambang Hermanto	Wonosari Village, Tamiang Hulu Sub District, Tamiang District, Aceh Province, Indonesia	4° 18' 57.850"E	97° 52' 56.544"N	1.59	1.59	28.55	No	09 July 2022
	Bambang Paji 1	Juar Village, Sekerek Sub District, Tamiang District, Aceh Province, Indonesia	4° 17' 42.262"E	97° 51' 32.296"N	0.32	0.32	5.76	No	09 July 2022
58	Bambang Paji 2	Juar Village, Sekerek Sub District, Tamiang District, Aceh Province, Indonesia	4° 17' 40.259"E	97° 51' 33.3					

No	Nama	Alamat	Lintang	Bujur	Luas (m ²)	Luas (m ²)	Luas (m ²)	Status	Tgl. Pengesahan
84	Dicky Willadi	Wonosari Village, Tamiang Hulu Sub District, Tamiang District, Aceh Province, Indonesia	4° 14' 9.529" E	97° 54' 10.970" N	1.16	1.16	20.88	No	09 Jul 2022
85	Diki Hidayat	Pengdam Village, Bandar Pusaka Sub District, Tamiang District, Aceh Province, Indonesia	4° 17' 59.523" E	97° 49' 49.672" N	1.96	1.96	35.19	No	09 Jul 2022
86	Drs. Abdul Muhallib 1	Rantau Birang Village, Bandar Pusaka Sub District, Tamiang District, Aceh Province, Indonesia	4° 16' 59.766" E	97° 52' 58.844" N	2.00	2.00	36.00	No	09 Jul 2022
86	Drs. Abdul Muhallib 2	Rantau Birang Village, Bandar Pusaka Sub District, Tamiang District, Aceh Province, Indonesia	4° 17' 15.496" E	97° 53' 5.989" N	2.21	2.21	39.78	No	09 Jul 2022
87	Drs. Abdul Muhallib 3	Sading Village, Tamiang Hulu Sub District, Tamiang District, Aceh Province, Indonesia	4° 16' 44.881" E	97° 54' 1.658" N	1.50	1.50	26.88	No	09 Jul 2022
88	Eku Ramadana	Harum Sari Village, Tamiang Hulu Sub District, Tamiang District, Aceh Province, Indonesia	4° 18' 36.767" E	97° 55' 13.115" N	1.50	1.50	27.00	No	09 Jul 2022
89	Eman Suondo 1	Wonosari Village, Tamiang Hulu Sub District, Tamiang District, Aceh Province, Indonesia	4° 14' 46.526" E	97° 54' 25.841" N	1.06	1.06	19.68	No	09 Jul 2022
89	Eman Suondo 2	Sulum Village, Sekeraik Sub District, Tamiang District, Aceh Province, Indonesia	4° 18' 47.501" E	97° 51' 19.255" N	0.05	0.05	0.96	No	09 Jul 2022
90	Endah Syah Putra	Sulum Village, Sekeraik Sub District, Tamiang District, Aceh Province, Indonesia	4° 19' 9.289" E	97° 51' 18.733" N	0.97	0.97	17.46	No	09 Jul 2022
91	Epi Supriadi	Wonosari Village, Tamiang Hulu Sub District, Tamiang District, Aceh Province, Indonesia	4° 14' 26.519" E	97° 53' 43.740" N	0.91	0.91	16.38	No	09 Jul 2022
92	Eryanto	Pengdam Village, Bandar Pusaka Sub District, Tamiang District, Aceh Province, Indonesia	4° 17' 15.077" E	97° 51' 2.609" N	0.84	0.84	15.12	No	09 Jul 2022
93	Ermawati	Wonosari Village, Tamiang Hulu Sub District, Tamiang District, Aceh Province, Indonesia	4° 16' 43.031" E	97° 54' 13.249" N	0.77	0.77	13.86	No	09 Jul 2022
94	Fadhil	Pematang Durtan Village, Sekeraik Sub District, Tamiang District, Aceh Province, Indonesia	4° 18' 26.803" E	97° 52' 55.303" N	0.38	0.38	6.89	No	09 Jul 2022
95	Fahmi Andika	Pengdam Village, Bandar Pusaka Sub District, Tamiang District, Aceh Province, Indonesia	4° 18' 10.118" E	97° 49' 7.165" N	1.70	1.70	30.60	No	09 Jul 2022
96	Faisal Adami	Juar Village, Sekeraik Sub District, Tamiang District, Aceh Province, Indonesia	4° 18' 2.629" E	97° 49' 16.165" N	0.84	0.84	15.12	No	09 Jul 2022
97	Fandah	Juar Village, Sekeraik Sub District, Tamiang District, Aceh Province, Indonesia	4° 18' 3.336" E	97° 51' 54.558" N	0.51	0.51	9.16	No	09 Jul 2022
98	Fanhu Roji	Pengdam Village, Bandar Pusaka Sub District, Tamiang District, Aceh Province, Indonesia	4° 18' 31.104" E	97° 49' 15.168" N	4.34	4.34	78.06	No	09 Jul 2022
99	Fery Fadi	Wonosari Village, Tamiang Hulu Sub District, Tamiang District, Aceh Province, Indonesia	4° 15' 2.430" E	97° 53' 18.128" N	1.60	1.60	28.77	No	09 Jul 2022
100	Fitri Mayqal	Baling Karang Village, Sekeraik Sub District, Tamiang District, Aceh Province, Indonesia	4° 19' 20.929" E	97° 48' 54.252" N	0.80	0.80	14.40	No	09 Jul 2022
101	Fitria	Tanjung Gaultumpang Village, Sekeraik Sub District, Tamiang District, Aceh Province, Indonesia	4° 17' 55.187" E	97° 52' 24.247" N	3.67	3.67	65.98	No	09 Jul 2022
102	Fitri Indira	Pengdam Village, Bandar Pusaka Sub District, Tamiang District, Aceh Province, Indonesia	4° 17' 42.647" E	97° 50' 3.379" N	1.24	1.24	22.32	No	09 Jul 2022
103	Gegap	Harum Sari Village, Tamiang Hulu Sub District, Tamiang District, Aceh Province, Indonesia	4° 17' 52.800" E	97° 54' 24.242" N	1.00	1.00	18.00	No	09 Jul 2022
104	Gien	Blang Kandi Village, Bandar Pusaka Sub District, Tamiang District, Aceh Province, Indonesia	4° 14' 2.800" E	97° 52' 1.368" N	1.50	1.50	27.00	No	09 Jul 2022
105	H Abd Samud	Wonosari Village, Tamiang Hulu Sub District, Tamiang District, Aceh Province, Indonesia	4° 14' 2.800" E	97° 54' 12.922" N	0.44	0.44	7.92	No	09 Jul 2022
106	Halim Yusuf	Pengdam Village, Bandar Pusaka Sub District, Tamiang District, Aceh Province, Indonesia	4° 17' 53.095" E	97° 49' 48.252" N	1.62	1.62	29.16	No	09 Jul 2022
107	Harli Handoko	Pengdam Village, Bandar Pusaka Sub District, Tamiang District, Aceh Province, Indonesia	4° 18' 34.943" E	97° 50' 12.460" N	0.80	0.80	16.20	No	09 Jul 2022
108	Harliadi	Harum Sari Village, Tamiang Hulu Sub District, Tamiang District, Aceh Province, Indonesia	4° 14' 36.251" E	97° 55' 9.674" N	1.27	1.27	22.77	No	09 Jul 2022
109	Harsa 1	Pengdam Village, Bandar Pusaka Sub District, Tamiang District, Aceh Province, Indonesia	4° 18' 37.200" E	97° 49' 42.736" N	0.44	0.44	7.83	No	09 Jul 2022
109	Harsa 2	Bengkelang Village, Bandar Pusaka Sub District, Tamiang District, Aceh Province, Indonesia	4° 18' 42.599" E	97° 49' 7.397" N	1.48	1.48	26.94	No	09 Jul 2022
109	Harsa 3	Bengkelang Village, Bandar Pusaka Sub District, Tamiang District, Aceh Province, Indonesia	4° 18' 42.599" E	97° 49' 7.397" N	1.48	1.48	26.94	No	09 Jul 2022
110	Hasan Bakri 1	Bengkelang Village, Bandar Pusaka Sub District, Tamiang District, Aceh Province, Indonesia	4° 18' 39.737" E	97° 48' 37.883" N	1.70	1.70	30.60	No	09 Jul 2022
110	Hasan Bakri 2	Juar Village, Sekeraik Sub District, Tamiang District, Aceh Province, Indonesia	4° 18' 34.066" E	97° 51' 50.113" N	0.86	0.86	15.43	No	09 Jul 2022
111	Hasan Rudi	Juar Village, Sekeraik Sub District, Tamiang District, Aceh Province, Indonesia	4° 17' 47.470" E	97° 51' 48.145" N	0.97	0.97	17.40	No	09 Jul 2022
112	Hasanuddin	Pantai Cempaka Village, Bandar Pusaka Sub District, Tamiang District, Aceh Province, Indonesia	4° 16' 48.326" E	97° 52' 3.335" N	1.13	1.13	20.28	No	09 Jul 2022
113	Hasanuddin C 1	Pantai Cempaka Village, Bandar Pusaka Sub District, Tamiang District, Aceh Province, Indonesia	4° 17' 19.634" E	97° 51' 58.971" N	0.17	0.17	3.06	No	09 Jul 2022
113	Hasanuddin C 2	Pematang Durtan Village, Sekeraik Sub District, Tamiang District, Aceh Province, Indonesia	4° 18' 9.625" E	97° 52' 52.340" N	0.93	0.93	16.68	No	09 Jul 2022
114	Hasanudin	Pematang Durtan Village, Sekeraik Sub District, Tamiang District, Aceh Province, Indonesia	4° 18' 3.392" E	97° 56' 19.500" N	1.30	1.30	23.45	No	09 Jul 2022
115	Hayati	Pematang Durtan Village, Sekeraik Sub District, Tamiang District, Aceh Province, Indonesia	4° 18' 13.748" E	97° 53' 1.418" N	0.80	0.80	14.40	No	09 Jul 2022
116	Heri Sugianto 1	Pengdam Village, Bandar Pusaka Sub District, Tamiang District, Aceh Province, Indonesia	4° 18' 25.308" E	97° 51' 12.408" N	2.30	2.30	41.40	No	09 Jul 2022
116	Heri Sugianto 2	Harum Sari Village, Tamiang Hulu Sub District, Tamiang District, Aceh Province, Indonesia	4° 13' 21.210" E	97° 54' 43.348" N	0.53	0.53	9.54	No	09 Jul 2022
117	Herianto 1	Harum Sari Village, Tamiang Hulu Sub District, Tamiang District, Aceh Province, Indonesia	4° 13' 2.132" E	97° 54' 12.786" N	0.66	0.66	11.96	No	09 Jul 2022
117	Herianto 2	Blang Kandi Village, Bandar Pusaka Sub District, Tamiang District, Aceh Province, Indonesia	4° 14' 19.103" E	97° 57' 57.482" N	0.71	0.71	12.85	No	09 Jul 2022
118	Herlis Samarah 1	Blang Kandi Village, Bandar Pusaka Sub District, Tamiang District, Aceh Province, Indonesia	4° 14' 19.276" E	97° 57' 59.835" N	1.33	1.33	23.99	No	09 Jul 2022
118	Herlis Samarah 2	Wonosari Village, Tamiang Hulu Sub District, Tamiang District, Aceh Province, Indonesia	4° 17' 16.033" E	97° 54' 54.435" N	0.64	0.64	11.50	No	09 Jul 2022
118	Herlis Samarah 3	Harum Sari Village, Tamiang Hulu Sub District, Tamiang District, Aceh Province, Indonesia	4° 13' 18.297" E	97° 54' 30.331" N	3.00	3.00	54.00	No	09 Jul 2022
119	Herman A	Harum Sari Village, Tamiang Hulu Sub District, Tamiang District, Aceh Province, Indonesia	4° 15' 18.398" E	97° 54' 35.200" N	3.00	3.00	54.00	No	09 Jul 2022
120	Herman B 1	Pantai Cempaka Village, Bandar Pusaka Sub District, Tamiang District, Aceh Province, Indonesia	4° 17' 50.928" E	97° 50' 54.751" N	0.85	0.85	15.30	No	09 Jul 2022
120	Herman B 2	Bengkelang Village, Bandar Pusaka Sub District, Tamiang District, Aceh Province, Indonesia	4° 18' 41.480" E	97° 48' 46.596" N	0.60	0.60	10.80	No	09 Jul 2022
121	Herman Supriadi 1	Bengkelang Village, Bandar Pusaka Sub District, Tamiang District, Aceh Province, Indonesia	4° 18' 37.313" E	97° 48' 45.717" N	1.41	1.41	25.31	No	09 Jul 2022
121	Herman Supriadi 2	Juar Village, Sekeraik Sub District, Tamiang District, Aceh Province, Indonesia	4° 18' 33.400" E	97° 52' 8.898" N	0.79	0.79	14.16	No	09 Jul 2022
121	Herman Supriadi 3	Juar Village, Sekeraik Sub District, Tamiang District, Aceh Province, Indonesia	4° 18' 36.587" E	97° 52' 10.515" N	0.88	0.88	15.79	No	09 Jul 2022
122	Hindun 1	Juar Village, Sekeraik Sub District, Tamiang District, Aceh Province, Indonesia	4° 18' 44.991" E	97° 51' 53.897" N	1.43	1.43	25.74	No	09 Jul 2022
122	Hindun 2	Bengkelang Village, Bandar Pusaka Sub District, Tamiang District, Aceh Province, Indonesia	4° 18' 36.543" E	97° 48' 49.529" N	1.15	1.15	20.70	No	09 Jul 2022
123	Hindun 3	Bengkelang Village, Bandar Pusaka Sub District, Tamiang District, Aceh Province, Indonesia	4° 18' 32.336" E	97° 48' 40.532" N	1.60	1.60	28.80	No	09 Jul 2022
124	Husni Karika Sembiring	Pengdam Village, Bandar Pusaka Sub District, Tamiang District, Aceh Province, Indonesia	4° 18' 29.868" E	97° 52' 20.703" N	1.08	1.08	19.62	No	09 Jul 2022
124	Husni N Hasim	Bengkelang Village, Bandar Pusaka Sub District, Tamiang District, Aceh Province, Indonesia	4° 18' 51.768" E	97° 49' 20.481" N	0.53	0.53	9.45	No	09 Jul 2022
125	Idris Suandi 1	Rantau Birang Village, Bandar Pusaka Sub District, Tamiang District, Aceh Province, Indonesia	4° 18' 7.996" E	97° 53' 16.000" N	0.77	0.77	13.85	No	09 Jul 2022
125	Idris Suandi 2	Rantau Birang Village, Bandar Pusaka Sub District, Tamiang District, Aceh Province, Indonesia	4° 18' 9.696" E	97° 53' 27.105" N	0.94	0.94	16.98	No	09 Jul 2022
125	Idris Suandi 3	Rantau Birang Village, Bandar Pusaka Sub District, Tamiang District, Aceh Province, Indonesia	4° 17' 55.166" E	97° 53' 37.291" N	0.88	0.88	17.61	No	09 Jul 2022
126	Ika	Pengdam Village, Bandar Pusaka Sub District, Tamiang District, Aceh Province, Indonesia	4° 18' 15.910" E	97° 49' 45.884" N	0.62	0.62	11.16	No	09 Jul 2022
127	Ika	Pengdam Village, Bandar Pusaka Sub District, Tamiang District, Aceh Province, Indonesia	4° 17' 58.793" E	97° 48' 38.886" N	0.70	0.70	12.60	No	09 Jul 2022
128	Iman	Pengdam Village, Bandar Pusaka Sub District, Tamiang District, Aceh Province, Indonesia	4° 18' 13.145" E	97° 50' 5.388" N	0.40	0.40	7.20	No	09 Jul 2022
129	Imanengah 1	Bengkelang Village, Bandar Pusaka Sub District, Tamiang District, Aceh Province, Indonesia	4° 18' 11.407" E	97° 48' 40.071" N	1.40	1.40	25.20	No	09 Jul 2022
129	Imanengah 2	Subabudulang Village, Bandar Pusaka Sub District, Tamiang District, Aceh Province, Indonesia	4° 18' 37.601" E	97° 49' 21.932" N	0.40	0.40	7.20	No	09 Jul 2022
129	Imanengah 3	Subabudulang Village, Bandar Pusaka Sub District, Tamiang District, Aceh Province, Indonesia	4° 18' 22.351" E	97° 48' 21.833" N	0.71	0.71	12.84	No	09 Jul 2022
130	Indah Sari 1	Bengkelang Village, Bandar Pusaka Sub District, Tamiang District, Aceh Province, Indonesia	4° 18' 31.503" E	97° 48' 48.171" N	0.20	0.20	3.60	No	09 Jul 2022
130	Indah Sari 2	Bengkelang Village, Bandar Pusaka Sub District, Tamiang District, Aceh Province, Indonesia	4° 18' 36.343" E	97° 49' 14.118" N	0.40	0.40	7.20	No	09 Jul 2022
130	Indah Sari 3	Bengkelang Village, Bandar Pusaka Sub District, Tamiang District, Aceh Province, Indonesia	4° 18' 34.512" E	97° 48' 50.684" N	0.66	0.66	11.80	No	09 Jul 2022
131	Indra Gunawan 1	Harum Sari Village, Tamiang Hulu Sub District, Tamiang District, Aceh Province, Indonesia	4° 14' 29.253" E	97° 55' 26.857" N	0.72	0.72	12.92	No	09 Jul 2022
131	Indra Gunawan 2	Harum Sari Village, Tamiang Hulu Sub District, Tamiang District, Aceh Province, Indonesia	4° 14' 29.372" E	97° 55' 29.370" N	1.57	1.57	28.17	No	09 Jul 2022
132	Indra Gunawan 3	Harum Sari Village, Tamiang Hulu Sub District, Tamiang District, Aceh Province, Indonesia	4° 14' 29.372" E	97° 55' 29.370" N	1.57	1.57	28.17	No	09 Jul 2022
133	Istanto	Kalyo Village, Tamiang Hulu Sub District, Tamiang District, Aceh Province, Indonesia	4° 18' 30.851" E	97° 55' 26.728" N	3.63	3.63	65.34	No	09 Jul 2022
134	Istanto	Wonosari Village, Tamiang Hulu Sub District, Tamiang District, Aceh Province, Indonesia	4° 14' 35.893" E	97° 54' 41.804" N	1.20	1.20	21.64	No	09 Jul 2022
135	Iwan	Blang Kandi Village, Bandar Pusaka Sub District, Tamiang District, Aceh Province, Indonesia	4° 14' 48.459" E	97° 57' 52.023" N	0.01	0.01	0.10	No	09 Jul 2022
136	Iwan Syah Putra 2	Juar Village, Sekeraik Sub District, Tamiang District, Aceh Province, Indonesia	4° 18' 43.019" E	97° 51' 44.726" N	1.02	1.02	18.44	No	09 Jul 2022
137	Iwan Syah Putra	Sulum Village, Sekeraik Sub District, Tamiang District, Aceh Province, Indonesia	4° 18' 50.792" E	97° 51' 26.186" N	1.61	1.61	28.98	No	09 Jul 2022
138	Iyah	Wonosari Village, Tamiang Hulu Sub District, Tamiang District, Aceh Province, Indonesia	4° 14' 53.447" E	97° 53' 52.993" N	1.00	1.00	18.00	No	09 Jul 2022
139	Iyandarsyah	Pantai Cempaka Village, Bandar Pusaka Sub District, Tamiang District, Aceh Province, Indonesia	4° 17' 58.962" E	97° 50' 58.357" N	0.80	0.80	14.40	No	09 Jul 2022
140	Ismail A	Pengdam Village, Bandar Pusaka Sub District, Tamiang District, Aceh Province, Indonesia	4° 18' 20.162" E	97° 50' 1.051" N	0.61	0.61	10.98	No	09 Jul 2022
140	Ismail B	Baling Karang Village, Sekeraik Sub District, Tamiang District, Aceh Province, Indonesia	4° 19' 20.595" E	97° 48' 58.972" N	2.24	2.24	40.32	No	09 Jul 2022
141	Ismail Hasim 1	Bengkelang Village, Bandar Pusaka Sub District, Tamiang District, Aceh Province, Indonesia	4° 18' 18.652" E	97° 49' 20.541" N	2.40	2.40	43.20	No	09 Jul 2022
142	Ismail Hasim 2	Bengkelang Village, Bandar Pusaka Sub District, Tamiang District, Aceh Province, Indonesia	4° 18' 47.841" E	97° 49' 14.270" N	0.30	0.30	5.40	No	09 Jul 2022
142	Ismail Hasim 3	Bengkelang Village, Bandar Pusaka Sub District, Tamiang District, Aceh Province, Indonesia	4° 18' 42.709" E	97° 49' 10.854" N	0.80	0.80	14.40	No	09 Jul 2022
143	Ismawati	Wonosari Village, Tamiang Hulu Sub District, Tamiang District, Aceh Province, Indonesia	4° 18' 48.204" E	97° 54' 7.934" N	2.04	2.04	36.67	No	09 Jul 2022
144	Ismir	Wonosari Village, Tamiang Hulu Sub District, Tamiang District, Aceh Province, Indonesia	4° 18' 52.800" E	97° 54' 1.964" N	1.05	1.05	18.90	No	09 Jul 2022
145	Istanto	Wonosari Village, Tamiang Hulu Sub District, Tamiang District, Aceh Province, Indonesia	4° 18' 57.913" E	97° 54' 26.876" N	1.92	1.92	34.56	No	09 Jul 2022
146	Iwan Hamdani	Suka Makmur Village, Tenggelun Sub District, Tamiang District, Aceh Province, Indonesia	4° 18' 53.696" E	97° 50' 17.727" N	2.10	2.10	37.80	No	09 Jul 2022
147	Iwan	Bengkelang Village, Bandar Pusaka Sub District, Tamiang District, Aceh Province, Indonesia	4° 18' 14.022" E	97° 48' 43.211" N	0.60	0.60	10.80	No	09 Jul 2022
148	Jalal 1	Sulum Village, Sekeraik Sub District, Tamiang District, Aceh Province, Indonesia	4° 18' 9.243" E	97° 51' 4.440" N	0.56	0.56	10.08	No	09 Jul 2022
148	Jalal 2	Sulum Village, Sekeraik Sub District, Tamiang District, Aceh Province, Indonesia	4° 18' 24.884" E	97° 51' 10.069" N	0.71	0.71	12.78	No	09 Jul 2022
149	Jamal Arif 1	Sulum Village, Sekeraik Sub District, Tamiang District, Aceh Province, Indonesia	4° 18' 19.731" E	97° 51' 16.627" N	0.50	0.50	9.00	No	09 Jul 2022
149	Jamal Arif 2	Sulum Village, Sekeraik Sub District, Tamiang District, Aceh Province, Indonesia	4° 18' 21.938" E	97° 51' 7.588" N	0.82	0.82	14.83	No	09 Jul 2022
150	Jamaluddin 1	Baling Karang Village, Sekeraik Sub District, Tamiang District, Aceh Province, Indonesia	4° 18' 54.077" E	97° 47' 55.675" N	1.25	1.25	22.5		

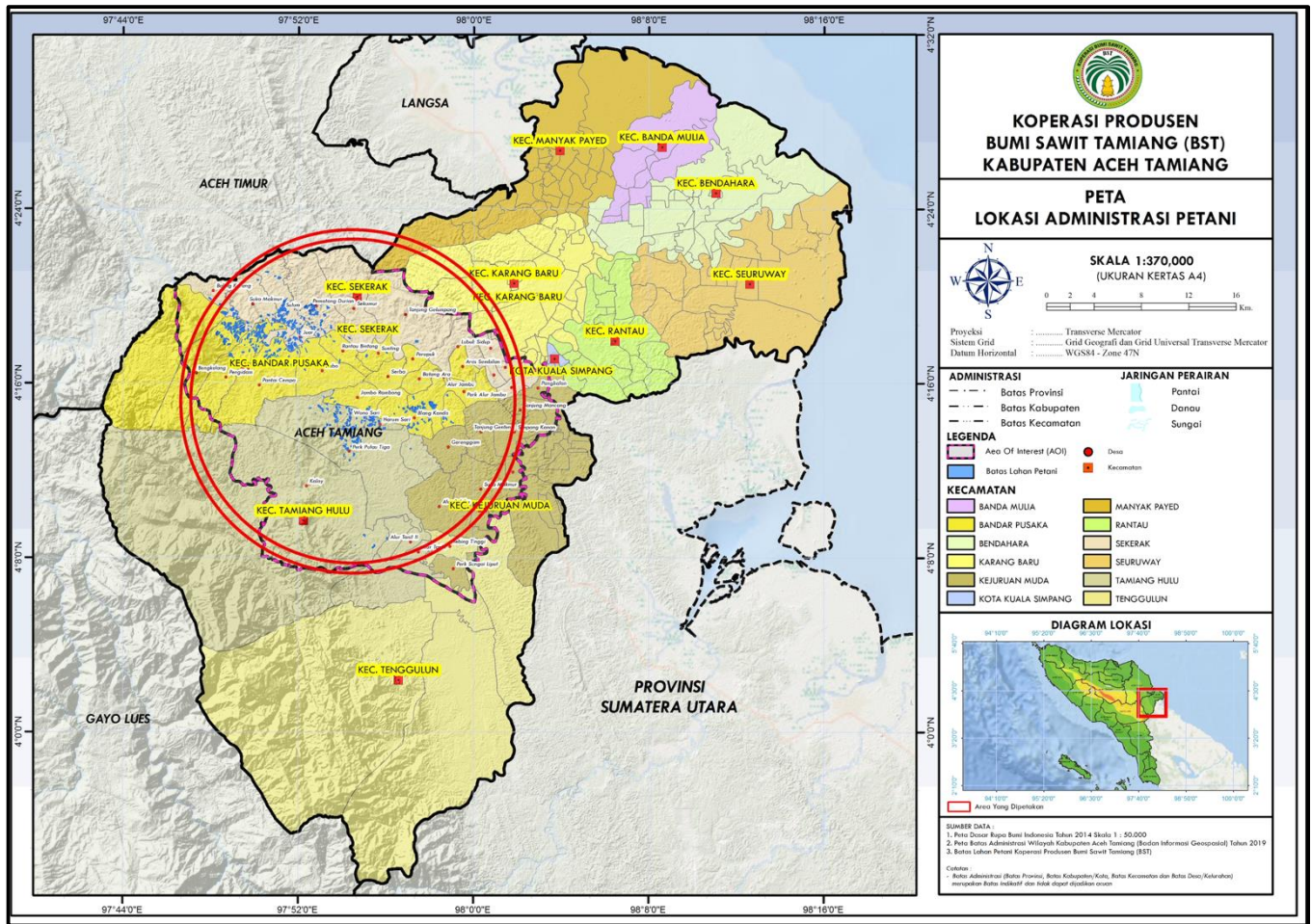
No	Name	Address	Latitude	Longitude	Area (m ²)	Area (m ²)	Area (m ²)	Status	Completion Date
180	Kaly Mazra	Bengkelang Village, Bandar Pusaka Sub District, Tamiang District, Aceh Province, Indonesia	4° 18' 27.504" E	97° 49' 26.505" N	0.60	0.60	10.80	No	09 Jul 2022
181	Khairi Abdim 1	Juar Village, Sekera Sub District, Tamiang District, Aceh Province, Indonesia	4° 18' 06.566" E	97° 51' 52.521" N	0.34	0.34	6.04	No	09 Jul 2022
181	Khairi Abdim 2	Juar Village, Sekera Sub District, Tamiang District, Aceh Province, Indonesia	4° 18' 4.810" E	97° 52' 5.338" N	0.24	0.24	4.29	No	09 Jul 2022
182	Khairi Anwar 1	Pematang Duri Village, Sekera Sub District, Tamiang District, Aceh Province, Indonesia	4° 18' 9.499" E	97° 52' 42.647" N	1.50	1.50	27.00	No	09 Jul 2022
182	Khairi Anwar 2	Pematang Duri Village, Sekera Sub District, Tamiang District, Aceh Province, Indonesia	4° 18' 5.544" E	97° 52' 45.562" N	0.20	0.20	3.60	No	09 Jul 2022
183	Khoirulmim 1	Sulum Village, Sekera Sub District, Tamiang District, Aceh Province, Indonesia	4° 18' 11.365" E	97° 51' 19.569" N	0.83	0.81	14.88	No	09 Jul 2022
183	Khoirulmim 2	Sulum Village, Sekera Sub District, Tamiang District, Aceh Province, Indonesia	4° 18' 46.579" E	97° 51' 21.440" N	1.89	1.89	34.02	No	09 Jul 2022
184	Khoirulmim 3	Wonosari Village, Tamiang Hulu Sub District, Tamiang District, Aceh Province, Indonesia	4° 14' 20.207" E	97° 54' 37.162" N	0.49	0.49	8.81	No	09 Jul 2022
184	Khoirulmim 4	Wonosari Village, Tamiang Hulu Sub District, Tamiang District, Aceh Province, Indonesia	4° 13' 39.775" E	97° 54' 14.918" N	0.71	0.71	12.76	No	09 Jul 2022
185	Kiyah	Bengkelang Village, Bandar Pusaka Sub District, Tamiang District, Aceh Province, Indonesia	4° 17' 54.266" E	97° 48' 40.349" N	0.75	0.75	13.50	No	09 Jul 2022
186	Kusnan	Wonosari Village, Tamiang Hulu Sub District, Tamiang District, Aceh Province, Indonesia	4° 13' 57.272" E	97° 54' 2.506" N	0.44	0.44	7.92	No	09 Jul 2022
187	Kusnan	Blang Kandi Village, Bandar Pusaka Sub District, Tamiang District, Aceh Province, Indonesia	4° 18' 53.867" E	97° 58' 58.538" N	1.28	1.28	23.00	No	09 Jul 2022
188	Lampang	Pematang Duri Village, Sekera Sub District, Tamiang District, Aceh Province, Indonesia	4° 18' 16.333" E	97° 50' 15.069" N	1.05	1.05	19.50	No	09 Jul 2022
189	Lan Rafiq	Pantai Cempaka Village, Bandar Pusaka Sub District, Tamiang District, Aceh Province, Indonesia	4° 17' 55.873" E	97° 50' 55.744" N	0.81	0.81	14.52	No	09 Jul 2022
190	LB Sawang	Pantai Cempaka Village, Bandar Pusaka Sub District, Tamiang District, Aceh Province, Indonesia	4° 17' 53.953" E	97° 51' 6.705" N	0.44	0.44	7.92	No	09 Jul 2022
191	Legimin 1	Blang Kandi Village, Bandar Pusaka Sub District, Tamiang District, Aceh Province, Indonesia	4° 15' 02.292" E	97° 58' 17.863" N	0.76	0.76	13.69	No	09 Jul 2022
191	Legimin 2	Blang Kandi Village, Bandar Pusaka Sub District, Tamiang District, Aceh Province, Indonesia	4° 15' 21.883" E	97° 57' 5.505" N	1.49	1.49	26.84	No	09 Jul 2022
192	Lili Suheri 1	Harum Sari Village, Tamiang Hulu Sub District, Tamiang District, Aceh Province, Indonesia	4° 13' 8.777" E	97° 54' 34.730" N	1.36	1.36	24.41	No	09 Jul 2022
192	Lili Suheri 2	Harum Sari Village, Tamiang Hulu Sub District, Tamiang District, Aceh Province, Indonesia	4° 13' 5.888" E	97° 54' 34.823" N	1.00	1.00	18.00	No	09 Jul 2022
192	Lili Suheri 3	Harum Sari Village, Tamiang Hulu Sub District, Tamiang District, Aceh Province, Indonesia	4° 13' 21.394" E	97° 54' 50.616" N	1.50	1.50	27.00	No	09 Jul 2022
192	Lili Suheri 4	Harum Sari Village, Tamiang Hulu Sub District, Tamiang District, Aceh Province, Indonesia	4° 13' 11.806" E	97° 55' 30.533" N	1.00	1.00	18.00	No	09 Jul 2022
193	M Akbar	Pematang Duri Village, Sekera Sub District, Tamiang District, Aceh Province, Indonesia	4° 18' 9.161" E	97° 52' 39.892" N	1.30	1.20	21.60	No	09 Jul 2022
194	M Ayub 1	Sulum Village, Sekera Sub District, Tamiang District, Aceh Province, Indonesia	4° 18' 34.372" E	97° 51' 36.874" N	0.10	0.10	1.85	No	09 Jul 2022
194	M Ayub 2	Juar Village, Sekera Sub District, Tamiang District, Aceh Province, Indonesia	4° 18' 31.633" E	97° 51' 41.071" N	0.23	0.23	4.14	No	09 Jul 2022
195	M Edi Kusuma	Pematang Duri Village, Sekera Sub District, Tamiang District, Aceh Province, Indonesia	4° 17' 4.677" E	97° 49' 1.349" N	4.80	4.80	86.40	No	09 Jul 2022
196	M Hud 1	Juar Village, Sekera Sub District, Tamiang District, Aceh Province, Indonesia	4° 18' 39.892" E	97° 51' 48.944" N	0.83	0.83	14.57	No	09 Jul 2022
196	M Hud 2	Juar Village, Sekera Sub District, Tamiang District, Aceh Province, Indonesia	4° 18' 37.424" E	97° 51' 46.211" N	0.14	0.14	2.45	No	09 Jul 2022
197	M Khs	Kaloy Village, Tamiang Hulu Sub District, Tamiang District, Aceh Province, Indonesia	4° 19' 1.623" E	97° 56' 1.049" N	2.64	2.64	47.52	No	09 Jul 2022
198	M Idris Andika	Kaloy Village, Tamiang Hulu Sub District, Tamiang District, Aceh Province, Indonesia	4° 18' 53.436" E	97° 56' 2.781" N	1.60	1.60	28.80	No	09 Jul 2022
199	M Nasir embong	Pematang Duri Village, Sekera Sub District, Tamiang District, Aceh Province, Indonesia	4° 18' 41.528" E	97° 52' 4.424" N	0.64	0.64	9.72	No	09 Jul 2022
200	M Saman 1	Sulum Village, Sekera Sub District, Tamiang District, Aceh Province, Indonesia	4° 18' 21.466" E	97° 51' 11.333" N	2.02	2.02	36.42	No	09 Jul 2022
200	M Saman 2	Sulum Village, Sekera Sub District, Tamiang District, Aceh Province, Indonesia	4° 18' 23.439" E	97° 51' 15.180" N	2.02	2.02	36.42	No	09 Jul 2022
201	M Tap	Pematang Duri Village, Sekera Sub District, Tamiang District, Aceh Province, Indonesia	4° 18' 25.926" E	97° 52' 38.650" N	2.00	2.00	36.00	No	09 Jul 2022
202	M Tani	Pematang Duri Village, Sekera Sub District, Tamiang District, Aceh Province, Indonesia	4° 18' 14.328" E	97° 52' 52.457" N	0.53	0.53	9.53	No	09 Jul 2022
203	M Ubaidullah 1	Harum Sari Village, Tamiang Hulu Sub District, Tamiang District, Aceh Province, Indonesia	4° 13' 5.465" E	97° 54' 28.770" N	0.32	0.32	5.70	No	09 Jul 2022
203	M Ubaidullah 2	Harum Sari Village, Tamiang Hulu Sub District, Tamiang District, Aceh Province, Indonesia	4° 13' 11.963" E	97° 54' 31.045" N	1.38	1.38	24.84	No	09 Jul 2022
203	M Ubaidullah 3	Harum Sari Village, Tamiang Hulu Sub District, Tamiang District, Aceh Province, Indonesia	4° 13' 7.319" E	97° 54' 27.535" N	1.57	1.57	28.30	No	09 Jul 2022
204	M Yana	Pematang Duri Village, Sekera Sub District, Tamiang District, Aceh Province, Indonesia	4° 18' 16.819" E	97° 52' 3.462" N	1.42	1.42	25.56	No	09 Jul 2022
205	M Yari	Pematang Duri Village, Sekera Sub District, Tamiang District, Aceh Province, Indonesia	4° 18' 28.981" E	97° 52' 33.919" N	0.90	0.90	16.20	No	09 Jul 2022
206	M Yunus 1	Juar Village, Sekera Sub District, Tamiang District, Aceh Province, Indonesia	4° 18' 46.035" E	97° 51' 48.684" N	1.63	1.63	29.34	No	09 Jul 2022
206	M Yunus 2	Juar Village, Sekera Sub District, Tamiang District, Aceh Province, Indonesia	4° 18' 51.613" E	97° 51' 50.797" N	1.63	1.63	29.39	No	09 Jul 2022
207	M Ai A 1	Bengkelang Village, Bandar Pusaka Sub District, Tamiang District, Aceh Province, Indonesia	4° 17' 54.601" E	97° 48' 35.211" N	1.25	1.25	22.50	No	09 Jul 2022
207	M Ai A 2	Bengkelang Village, Bandar Pusaka Sub District, Tamiang District, Aceh Province, Indonesia	4° 18' 28.135" E	97° 48' 59.734" N	0.18	0.18	3.24	No	09 Jul 2022
208	M Ai B 1	Bengkelang Village, Bandar Pusaka Sub District, Tamiang District, Aceh Province, Indonesia	4° 17' 58.439" E	97° 48' 34.601" N	0.71	0.71	12.78	No	09 Jul 2022
208	M Ai B 2	Bengkelang Village, Bandar Pusaka Sub District, Tamiang District, Aceh Province, Indonesia	4° 18' 1.837" E	97° 48' 41.604" N	0.70	0.70	12.60	No	09 Jul 2022
209	M Amin 1	Juar Village, Sekera Sub District, Tamiang District, Aceh Province, Indonesia	4° 17' 55.355" E	97° 51' 32.512" N	1.18	1.18	21.31	No	09 Jul 2022
209	M Amin 2	Sulum Village, Sekera Sub District, Tamiang District, Aceh Province, Indonesia	4° 18' 13.681" E	97° 51' 16.648" N	1.37	1.37	24.71	No	09 Jul 2022
210	M Amin Bin Jaludin	Bengkelang Village, Bandar Pusaka Sub District, Tamiang District, Aceh Province, Indonesia	4° 18' 31.900" E	97° 48' 55.615" N	2.00	2.00	36.00	No	09 Jul 2022
211	M Arun	Bengkelang Village, Bandar Pusaka Sub District, Tamiang District, Aceh Province, Indonesia	4° 18' 31.684" E	97° 49' 6.298" N	0.23	0.23	4.11	No	09 Jul 2022
211	M Yunus 1	Juar Village, Sekera Sub District, Tamiang District, Aceh Province, Indonesia	4° 17' 50.105" E	97° 51' 49.204" N	0.55	0.55	9.82	No	09 Jul 2022
212	M Yunus 2	Juar Village, Sekera Sub District, Tamiang District, Aceh Province, Indonesia	4° 18' 16.624" E	97° 52' 1.902" N	0.85	0.85	15.25	No	09 Jul 2022
212	M Yunus 3	Juar Village, Sekera Sub District, Tamiang District, Aceh Province, Indonesia	4° 18' 20.197" E	97° 51' 58.255" N	0.93	0.93	16.76	No	09 Jul 2022
212	M Yunus 4	Juar Village, Sekera Sub District, Tamiang District, Aceh Province, Indonesia	4° 18' 15.402" E	97° 52' 3.284" N	0.47	0.47	8.53	No	09 Jul 2022
213	Mud Hayati 1	Pematang Duri Village, Sekera Sub District, Tamiang District, Aceh Province, Indonesia	4° 18' 46.545" E	97° 52' 37.048" N	0.81	0.81	14.55	No	09 Jul 2022
213	Mud Hayati 2	Pematang Duri Village, Sekera Sub District, Tamiang District, Aceh Province, Indonesia	4° 18' 46.545" E	97° 52' 37.048" N	0.81	0.81	14.55	No	09 Jul 2022
214	Mahidin Karo Karo 1	Bengkelang Village, Bandar Pusaka Sub District, Tamiang District, Aceh Province, Indonesia	4° 18' 24.072" E	97° 49' 22.304" N	2.00	2.00	36.00	No	09 Jul 2022
214	Mahidin Karo Karo 2	Bengkelang Village, Bandar Pusaka Sub District, Tamiang District, Aceh Province, Indonesia	4° 18' 23.077" E	97° 49' 2.953" N	0.50	0.50	9.00	No	09 Jul 2022
214	Mahidin Karo Karo 3	Bengkelang Village, Bandar Pusaka Sub District, Tamiang District, Aceh Province, Indonesia	4° 18' 18.776" E	97° 49' 15.739" N	1.00	1.00	18.00	No	09 Jul 2022
215	Mai Sarah	Pantai Cempaka Village, Bandar Pusaka Sub District, Tamiang District, Aceh Province, Indonesia	4° 17' 16.991" E	97° 50' 44.434" N	1.62	1.62	29.16	No	09 Jul 2022
216	Mai Saifan	Pantai Cempaka Village, Bandar Pusaka Sub District, Tamiang District, Aceh Province, Indonesia	4° 17' 21.992" E	97° 50' 53.465" N	1.04	1.04	18.72	No	09 Jul 2022
217	Mamin Yusnizal 1	Sulum Village, Sekera Sub District, Tamiang District, Aceh Province, Indonesia	4° 18' 55.913" E	97° 51' 15.208" N	0.39	0.39	6.95	No	09 Jul 2022
217	Mamin Yusnizal 2	Sula Mekm Village, Tenggulun Sub District, Tamiang District, Aceh Province, Indonesia	4° 18' 54.982" E	97° 50' 51.608" N	4.66	4.66	83.88	No	09 Jul 2022
218	Marani 1	Blang Kandi Village, Bandar Pusaka Sub District, Tamiang District, Aceh Province, Indonesia	4° 18' 13.921" E	97° 50' 3.982" N	1.24	1.24	22.35	No	09 Jul 2022
218	Marani 2	Wonosari Village, Tamiang Hulu Sub District, Tamiang District, Aceh Province, Indonesia	4° 13' 23.159" E	97° 53' 27.075" N	1.00	1.00	18.00	No	09 Jul 2022
219	Mariono	Wonosari Village, Tamiang Hulu Sub District, Tamiang District, Aceh Province, Indonesia	4° 13' 28.207" E	97° 54' 0.763" N	0.98	0.98	17.70	No	09 Jul 2022
220	Maryanto	Harum Sari Village, Tamiang Hulu Sub District, Tamiang District, Aceh Province, Indonesia	4° 12' 40.629" E	97° 54' 4.968" N	1.50	1.50	27.00	No	09 Jul 2022
222	Maryono 1	Blang Kandi Village, Bandar Pusaka Sub District, Tamiang District, Aceh Province, Indonesia	4° 18' 22.973" E	97° 58' 38.738" N	0.01	0.01	0.22	No	09 Jul 2022
223	Maryono 2	Pematang Duri Village, Sekera Sub District, Tamiang District, Aceh Province, Indonesia	4° 17' 24.897" E	97° 49' 28.134" N	2.00	2.00	36.00	No	09 Jul 2022
224	Mas Bayu	Blang Kandi Village, Bandar Pusaka Sub District, Tamiang District, Aceh Province, Indonesia	4° 18' 30.950" E	97° 57' 32.636" N	0.04	0.04	0.67	No	09 Jul 2022
225	Masrah	Juar Village, Sekera Sub District, Tamiang District, Aceh Province, Indonesia	4° 17' 42.821" E	97° 51' 51.600" N	0.40	0.40	7.19	No	09 Jul 2022
226	Masrizal 1	Bengkelang Village, Bandar Pusaka Sub District, Tamiang District, Aceh Province, Indonesia	4° 18' 48.292" E	97° 49' 29.820" N	0.55	0.55	12.50	No	09 Jul 2022
226	Masrizal 2	Bengkelang Village, Bandar Pusaka Sub District, Tamiang District, Aceh Province, Indonesia	4° 18' 46.791" E	97° 48' 7.294" N	0.30	0.30	5.40	No	09 Jul 2022
226	Masrizal 3	Bengkelang Village, Bandar Pusaka Sub District, Tamiang District, Aceh Province, Indonesia	4° 18' 7.407" E	97° 48' 29.943" N	2.00	2.00	36.00	No	09 Jul 2022
227	Mat Baeti	Pantai Cempaka Village, Bandar Pusaka Sub District, Tamiang District, Aceh Province, Indonesia	4° 17' 24.932" E	97° 51' 57.259" N	1.41	1.41	25.38	No	09 Jul 2022
228	Mat Inan	Pantai Cempaka Village, Bandar Pusaka Sub District, Tamiang District, Aceh Province, Indonesia	4° 17' 1.599" E	97° 50' 39.862" N	1.27	1.27	22.85	No	09 Jul 2022
229	Mat Munir 1	Harum Sari Village, Tamiang Hulu Sub District, Tamiang District, Aceh Province, Indonesia	4° 13' 59.217" E	97° 55' 40.589" N	0.77	0.77	13.80	No	09 Jul 2022
229	Mat Munir 2	Harum Sari Village, Tamiang Hulu Sub District, Tamiang District, Aceh Province, Indonesia	4° 13' 55.811" E	97° 55' 41.050" N	0.77	0.77	13.80	No	09 Jul 2022
229	Mat Munir 3	Harum Sari Village, Tamiang Hulu Sub District, Tamiang District, Aceh Province, Indonesia	4° 13' 59.731" E	97° 55' 43.032" N	0.77	0.77	13.80	No	09 Jul 2022
229	Mat Munir 4	Harum Sari Village, Tamiang Hulu Sub District, Tamiang District, Aceh Province, Indonesia	4° 13' 54.024" E	97° 55' 43.032" N	0.77	0.77	13.80	No	09 Jul 2022
229	Mat Munir 5	Harum Sari Village, Tamiang Hulu Sub District, Tamiang District, Aceh Province, Indonesia	4° 13' 55.955" E	97° 55' 55.884" N	0.77	0.77	13.80	No	09 Jul 2022
230	Mat Pah	Pantai Cempaka Village, Bandar Pusaka Sub District, Tamiang District, Aceh Province, Indonesia	4° 18' 4.549" E	97° 50' 17.864" N	2.30	2.30	41.39	No	09 Jul 2022
231	Mat Puhli	Pematang Duri Village, Sekera Sub District, Tamiang District, Aceh Province, Indonesia	4° 17' 31.968" E	97° 50' 21.119" N	1.60	1.60	28.84	No	09 Jul 2022
232	Mat Puhli 1	Sulum Village, Sekera Sub District, Tamiang District, Aceh Province, Indonesia	4° 18' 31.965" E	97° 51' 32.562" N	0.46	0.46	8.27	No	09 Jul 2022
232	Mat Puhli 2	Sulum Village, Sekera Sub District, Tamiang District, Aceh Province, Indonesia	4° 18' 29.762" E	97° 51' 30.897" N	0.61	0.61	10.90	No	09 Jul 2022
232	Mat Puhli 3	Sulum Village, Sekera Sub District, Tamiang District, Aceh Province, Indonesia	4° 18' 36.182" E	97° 51' 34.188" N	0.89	0.89	16.08	No	09 Jul 2022
233	Mat Raje 1	Juar Village, Sekera Sub District, Tamiang District, Aceh Province, Indonesia	4° 17' 51.789" E	97° 51' 43.624" N	0.34	0.34	6.04	No	09 Jul 2022
233	Mat Raje 2	Juar Village, Sekera Sub District, Tamiang District, Aceh Province, Indonesia	4° 17' 49.644" E	97° 51' 46.651" N	0.89	0.89	16.07	No	09 Jul 2022
234	Maulana	Harum Sari Village, Tamiang Hulu Sub District, Tamiang District, Aceh Province, Indonesia	4° 13' 55.955" E	97° 55' 55.884" N	2.00	2.00	36.00	No	09 Jul 2022
234	Mawardi 1	Sulum Village, Sekera Sub District, Tamiang District, Aceh Province, Indonesia	4° 18' 56.084" E	97° 54' 24.165" N	0.55	0.55	9.90	No	09 Jul 2022
234	Mawardi 2	Sulum Village, Sekera Sub District, Tamiang District, Aceh Province, Indonesia	4° 18' 50.807" E	97° 51' 42.576" N	0.89	0.89	16.04	No	09 Jul 2022
236	Melan	Pematang Duri Village, Sekera Sub District, Tamiang District, Aceh Province, Indonesia	4° 18' 21.232" E	97° 49' 52.720" N	0.21	0.21	4.86	No	09 Jul 2022
237	Miri	Wonosari Village, Tamiang Hulu Sub District, Tamiang District, Aceh Province, Indonesia	4° 13' 55.840" E	97° 53' 52.835" N	0.49	0.49	8.82	No	09 Jul 2022

No	Nama	Alamat	Luas (m ²)	Luas (m ²)	Luas (m ²)	Status	Tgl. Pengesahan		
269	Muzburrahman	Pengdam Village, Bandar Pusaka Sub District, Tamiang District, Aceh Province, Indonesia	4°18'37.459"E	97°50'8.845"E	2.43	2.43	43.74	No	09 Jul 2022
270	Naimah	Pengdam Village, Bandar Pusaka Sub District, Tamiang District, Aceh Province, Indonesia	4°17'29.839"E	97°49'46.008"E	0.80	0.80	14.40	No	09 Jul 2022
271	Nani	Blang Kanda Village, Bandar Pusaka Sub District, Tamiang District, Aceh Province, Indonesia	4°14'24.506"E	97°56'11.612"E	0.05	0.05	0.81	No	09 Jul 2022
272	Nasab Hasbuan	Wonosari Village, Tamiang Hulu Sub District, Tamiang District, Aceh Province, Indonesia	4°14'43.106"E	97°54'18.318"E	0.48	0.48	8.64	No	09 Jul 2022
273	Nasib Siliringa	Pengdam Village, Bandar Pusaka Sub District, Tamiang District, Aceh Province, Indonesia	4°18'43.923"E	97°53'52.923"E	0.62	0.62	11.16	No	09 Jul 2022
274	Nasip	Harum Sari Village, Tamiang Hulu Sub District, Tamiang District, Aceh Province, Indonesia	4°14'2.588"E	97°55'13.245"E	0.61	0.61	11.06	No	09 Jul 2022
275	Nasir	Pematang Duri Village, Sekera Sub District, Tamiang District, Aceh Province, Indonesia	4°19'33.070"E	97°53'15.338"E	0.20	0.20	3.60	No	09 Jul 2022
276	Nasul	Pengdam Village, Bandar Pusaka Sub District, Tamiang District, Aceh Province, Indonesia	4°18'23.583"E	97°50'4.377"E	0.82	0.82	14.80	No	09 Jul 2022
277	Nayan 1	Juar Village, Sekera Sub District, Tamiang District, Aceh Province, Indonesia	4°17'41.997"E	97°51'35.479"E	0.51	0.51	9.12	No	09 Jul 2022
277	Nayan 2	Juar Village, Sekera Sub District, Tamiang District, Aceh Province, Indonesia	4°17'57.539"E	97°52'4.987"E	1.39	1.39	24.98	No	09 Jul 2022
277	Nayan 3	Juar Village, Sekera Sub District, Tamiang District, Aceh Province, Indonesia	4°17'38.424"E	97°51'36.757"E	0.54	0.54	9.68	No	09 Jul 2022
277	Nayan 4	Juar Village, Sekera Sub District, Tamiang District, Aceh Province, Indonesia	4°17'48.657"E	97°51'34.607"E	0.39	0.39	7.02	No	09 Jul 2022
278	Nagdimin 1	Harum Sari Village, Tamiang Hulu Sub District, Tamiang District, Aceh Province, Indonesia	4°14'36.937"E	97°53'54.934"E	1.03	1.03	40.32	No	09 Jul 2022
278	Nagdimin 2	Wonosari Village, Tamiang Hulu Sub District, Tamiang District, Aceh Province, Indonesia	4°14'42.490"E	97°53'48.163"E	0.66	0.66	11.91	No	09 Jul 2022
278	Nagdimin 3	Wonosari Village, Tamiang Hulu Sub District, Tamiang District, Aceh Province, Indonesia	4°14'38.897"E	97°53'54.787"E	0.67	0.67	12.00	No	09 Jul 2022
279	Nagmani	Wonosari Village, Tamiang Hulu Sub District, Tamiang District, Aceh Province, Indonesia	4°14'34.294"E	97°54'14.022"E	0.33	0.33	5.91	No	09 Jul 2022
280	Nagati	Harum Sari Village, Tamiang Hulu Sub District, Tamiang District, Aceh Province, Indonesia	4°13'55.076"E	97°55'56.713"E	1.00	1.00	18.00	No	09 Jul 2022
281	Nagati 1	Pengdam Village, Sekera Sub District, Tamiang District, Aceh Province, Indonesia	4°18'16.076"E	97°51'24.125"E	0.49	0.49	8.83	No	09 Jul 2022
281	Nagati 2	Juar Village, Sekera Sub District, Tamiang District, Aceh Province, Indonesia	4°18'7.718"E	97°51'17.892"E	0.59	0.59	10.65	No	09 Jul 2022
282	Nagimo	Wonosari Village, Tamiang Hulu Sub District, Tamiang District, Aceh Province, Indonesia	4°14'15.820"E	97°53'41.339"E	2.27	2.27	42.67	No	09 Jul 2022
282	Nagimudin 1	Harum Sari Village, Tamiang Hulu Sub District, Tamiang District, Aceh Province, Indonesia	4°14'16.394"E	97°55'15.055"E	2.34	2.34	44.80	No	09 Jul 2022
283	Nagimudin 2	Harum Sari Village, Tamiang Hulu Sub District, Tamiang District, Aceh Province, Indonesia	4°14'34.475"E	97°55'10.588"E	1.00	1.00	18.00	No	09 Jul 2022
283	Nagimudin 3	Harum Sari Village, Tamiang Hulu Sub District, Tamiang District, Aceh Province, Indonesia	4°14'46.491"E	97°55'21.642"E	1.00	1.00	34.20	No	09 Jul 2022
284	Nia Atati	Wonosari Village, Tamiang Hulu Sub District, Tamiang District, Aceh Province, Indonesia	4°14'48.392"E	97°53'19.273"E	2.03	2.03	36.59	No	09 Jul 2022
285	Nicky Rinaldi	Wonosari Village, Tamiang Hulu Sub District, Tamiang District, Aceh Province, Indonesia	4°15'1.281"E	97°53'50.381"E	2.00	2.00	36.00	No	09 Jul 2022
286	Nur Aman 1	Bengkelang Village, Bandar Pusaka Sub District, Tamiang District, Aceh Province, Indonesia	4°18'3.461"E	97°49'14.008"E	1.56	1.56	28.98	No	09 Jul 2022
286	Nur Aman 2	Bengkelang Village, Bandar Pusaka Sub District, Tamiang District, Aceh Province, Indonesia	4°18'29.630"E	97°49'2.940"E	1.83	1.83	32.04	No	09 Jul 2022
287	Nur Arun	Pengdam Village, Bandar Pusaka Sub District, Tamiang District, Aceh Province, Indonesia	4°18'28.557"E	97°50'5.688"E	1.00	1.00	18.00	No	09 Jul 2022
287	Nur Arifin	Pengdam Village, Bandar Pusaka Sub District, Tamiang District, Aceh Province, Indonesia	4°17'50.986"E	97°50'0.260"E	0.20	0.20	3.60	No	09 Jul 2022
288	Nur Rahmah	Pengdam Village, Bandar Pusaka Sub District, Tamiang District, Aceh Province, Indonesia	4°17'51.650"E	97°50'13.936"E	1.00	1.00	36.00	No	09 Jul 2022
290	Nurani	Pantai Cempaka Village, Bandar Pusaka Sub District, Tamiang District, Aceh Province, Indonesia	4°17'32.105"E	97°51'6.292"E	2.00	2.00	36.00	No	09 Jul 2022
291	Nurani	Juar Village, Sekera Sub District, Tamiang District, Aceh Province, Indonesia	4°18'16.653"E	97°51'58.803"E	0.55	0.55	9.82	No	09 Jul 2022
292	Nurakin 1	Bengkelang Village, Bandar Pusaka Sub District, Tamiang District, Aceh Province, Indonesia	4°18'30.978"E	97°49'23.796"E	0.24	0.24	4.32	No	09 Jul 2022
292	Nurakin 2	Pantai Cempaka Village, Bandar Pusaka Sub District, Tamiang District, Aceh Province, Indonesia	4°18'39.885"E	97°49'10.005"E	1.51	1.51	27.09	No	09 Jul 2022
292	Nurakin 3	Bengkelang Village, Bandar Pusaka Sub District, Tamiang District, Aceh Province, Indonesia	4°17'26.960"E	97°50'30.850"E	1.37	1.37	24.71	No	09 Jul 2022
293	Nuridin	Pantai Cempaka Village, Bandar Pusaka Sub District, Tamiang District, Aceh Province, Indonesia	4°18'58.453"E	97°50'41.907"E	0.62	0.62	11.16	No	09 Jul 2022
294	Nurhijah	Pematang Duri Village, Sekera Sub District, Tamiang District, Aceh Province, Indonesia	4°18'10.147"E	97°53'14.147"E	0.59	0.59	10.65	No	09 Jul 2022
295	Nurhikmah	Pantai Cempaka Village, Bandar Pusaka Sub District, Tamiang District, Aceh Province, Indonesia	4°17'27.033"E	97°50'35.802"E	1.25	1.25	22.50	No	09 Jul 2022
296	Nurhoman	Harum Sari Village, Tamiang Hulu Sub District, Tamiang District, Aceh Province, Indonesia	4°13'16.430"E	97°54'41.475"E	1.49	1.49	26.78	No	09 Jul 2022
297	Nurul Husna	Pengdam Village, Bandar Pusaka Sub District, Tamiang District, Aceh Province, Indonesia	4°18'7.781"E	97°50'5.786"E	0.64	0.64	11.52	No	09 Jul 2022
298	Paidi	Pengdam Village, Tamiang Hulu Sub District, Tamiang District, Aceh Province, Indonesia	4°15'19.166"E	97°53'33.958"E	0.53	0.53	9.54	No	09 Jul 2022
299	Pajandudin 1	Wonosari Village, Tamiang Hulu Sub District, Tamiang District, Aceh Province, Indonesia	4°13'57.216"E	97°54'35.403"E	1.06	1.06	19.13	No	09 Jul 2022
299	Pajandudin 2	Wonosari Village, Tamiang Hulu Sub District, Tamiang District, Aceh Province, Indonesia	4°13'32.124"E	97°54'26.906"E	0.33	0.33	5.89	No	09 Jul 2022
300	Pajandudin 3	Wonosari Village, Tamiang Hulu Sub District, Tamiang District, Aceh Province, Indonesia	4°13'33.997"E	97°54'29.826"E	0.50	0.50	8.92	No	09 Jul 2022
301	Paidi	Wonosari Village, Tamiang Hulu Sub District, Tamiang District, Aceh Province, Indonesia	4°15'44.373"E	97°54'31.770"E	1.70	1.70	30.60	No	09 Jul 2022
301	Paidi	Bengkelang Village, Bandar Pusaka Sub District, Tamiang District, Aceh Province, Indonesia	4°18'35.445"E	97°49'29.560"E	0.40	0.40	7.20	No	09 Jul 2022
302	Pandi 1	Wonosari Village, Tamiang Hulu Sub District, Tamiang District, Aceh Province, Indonesia	4°14'35.408"E	97°53'55.715"E	0.41	0.41	7.30	No	09 Jul 2022
302	Pandi 2	Wonosari Village, Tamiang Hulu Sub District, Tamiang District, Aceh Province, Indonesia	4°14'29.393"E	97°53'39.037"E	0.77	0.77	13.84	No	09 Jul 2022
303	Poriman 1	Juar Village, Sekera Sub District, Tamiang District, Aceh Province, Indonesia	4°18'7.391"E	97°51'46.769"E	0.51	0.51	9.13	No	09 Jul 2022
303	Poriman 2	Juar Village, Sekera Sub District, Tamiang District, Aceh Province, Indonesia	4°18'3.514"E	97°51'56.478"E	0.52	0.52	9.30	No	09 Jul 2022
303	Poriman 3	Juar Village, Sekera Sub District, Tamiang District, Aceh Province, Indonesia	4°18'5.121"E	97°51'47.615"E	1.08	1.08	19.44	No	09 Jul 2022
304	Poriyang	Wonosari Village, Tamiang Hulu Sub District, Tamiang District, Aceh Province, Indonesia	4°13'58.570"E	97°54'30.000"E	0.66	0.66	11.88	No	09 Jul 2022
305	Puji 1	Blang Kanda Village, Bandar Pusaka Sub District, Tamiang District, Aceh Province, Indonesia	4°14'42.021"E	97°57'47.950"E	0.04	0.04	0.64	No	09 Jul 2022
305	Puji 2	Blang Kanda Village, Bandar Pusaka Sub District, Tamiang District, Aceh Province, Indonesia	4°14'42.986"E	97°57'43.011"E	3.59	3.59	64.68	No	09 Jul 2022
306	Rabudin	Pengdam Village, Bandar Pusaka Sub District, Tamiang District, Aceh Province, Indonesia	4°18'32.318"E	97°50'13.628"E	0.50	0.50	9.00	No	09 Jul 2022
307	Rahmah	Pengdam Village, Bandar Pusaka Sub District, Tamiang District, Aceh Province, Indonesia	4°18'0.897"E	97°49'33.725"E	0.60	0.60	10.80	No	09 Jul 2022
308	Rahmah	Wonosari Village, Tamiang Hulu Sub District, Tamiang District, Aceh Province, Indonesia	4°14'19.653"E	97°54'14.918"E	1.00	1.00	18.00	No	09 Jul 2022
309	Rahmad A	Pengdam Village, Bandar Pusaka Sub District, Tamiang District, Aceh Province, Indonesia	4°17'30.147"E	97°50'4.006"E	3.00	3.00	54.00	No	09 Jul 2022
310	Rahmad B	Batabudung Village, Bandar Pusaka Sub District, Tamiang District, Aceh Province, Indonesia	4°18'14.588"E	97°48'38.995"E	4.68	4.68	84.15	No	09 Jul 2022
311	Rahmad C 1	Juar Village, Sekera Sub District, Tamiang District, Aceh Province, Indonesia	4°17'42.909"E	97°51'43.780"E	0.28	0.28	4.98	No	09 Jul 2022
311	Rahmad C 2	Juar Village, Sekera Sub District, Tamiang District, Aceh Province, Indonesia	4°17'40.438"E	97°51'43.444"E	0.16	0.16	2.88	No	09 Jul 2022
311	Rahmad C 3	Juar Village, Sekera Sub District, Tamiang District, Aceh Province, Indonesia	4°17'48.363"E	97°51'48.363"E	0.14	0.14	2.52	No	09 Jul 2022
312	Rahma A	Pantai Cempaka Village, Bandar Pusaka Sub District, Tamiang District, Aceh Province, Indonesia	4°17'2.196"E	97°50'46.081"E	1.75	1.75	31.49	No	09 Jul 2022
313	Raihan	Blang Kanda Village, Bandar Pusaka Sub District, Tamiang District, Aceh Province, Indonesia	4°14'49.084"E	97°57'26.430"E	1.90	1.90	34.20	No	09 Jul 2022
314	Raja Mulyadi	Pengdam Village, Bandar Pusaka Sub District, Tamiang District, Aceh Province, Indonesia	4°18'12.106"E	97°50'6.649"E	0.60	0.60	10.80	No	09 Jul 2022
315	Ramadhan	Bengkelang Village, Bandar Pusaka Sub District, Tamiang District, Aceh Province, Indonesia	4°18'16.316"E	97°48'57.896"E	0.70	0.70	12.60	No	09 Jul 2022
316	Raman	Harum Sari Village, Tamiang Hulu Sub District, Tamiang District, Aceh Province, Indonesia	4°13'4.084"E	97°54'42.775"E	1.00	1.00	18.00	No	09 Jul 2022
317	Rami 1	Blang Kanda Village, Bandar Pusaka Sub District, Tamiang District, Aceh Province, Indonesia	4°14'37.611"E	97°57'53.178"E	0.04	0.04	0.75	No	09 Jul 2022
317	Rami 2	Blang Kanda Village, Bandar Pusaka Sub District, Tamiang District, Aceh Province, Indonesia	4°14'37.099"E	97°57'51.863"E	0.70	0.70	12.60	No	09 Jul 2022
317	Rami 3	Blang Kanda Village, Bandar Pusaka Sub District, Tamiang District, Aceh Province, Indonesia	4°14'40.631"E	97°57'50.833"E	2.13	2.13	38.97	No	09 Jul 2022
318	Rami Ependi 1	Juar Village, Sekera Sub District, Tamiang District, Aceh Province, Indonesia	4°17'40.631"E	97°51'29.690"E	0.19	0.19	3.37	No	09 Jul 2022
318	Rami Ependi 2	Juar Village, Sekera Sub District, Tamiang District, Aceh Province, Indonesia	4°17'49.695"E	97°51'33.338"E	0.38	0.38	6.84	No	09 Jul 2022
318	Rami Ependi 3	Juar Village, Sekera Sub District, Tamiang District, Aceh Province, Indonesia	4°17'41.209"E	97°51'32.548"E	0.45	0.45	8.10	No	09 Jul 2022
318	Rami Ependi 4	Juar Village, Sekera Sub District, Tamiang District, Aceh Province, Indonesia	4°17'44.569"E	97°51'38.721"E	0.49	0.49	8.82	No	09 Jul 2022
318	Rami Ependi 5	Juar Village, Sekera Sub District, Tamiang District, Aceh Province, Indonesia	4°17'57.120"E	97°51'37.008"E	1.10	1.10	19.80	No	09 Jul 2022
319	Raprah 1	Sula Makmur Village, Tenggulun Sub District, Tamiang District, Aceh Province, Indonesia	4°18'39.931"E	97°51'43.998"E	1.14	1.14	20.45	No	09 Jul 2022
319	Raprah 2	Sula Makmur Village, Tenggulun Sub District, Tamiang District, Aceh Province, Indonesia	4°18'31.805"E	97°51'41.679"E	1.14	1.14	20.45	No	09 Jul 2022
320	Rasmi 1	Bengkelang Village, Bandar Pusaka Sub District, Tamiang District, Aceh Province, Indonesia	4°18'42.223"E	97°49'22.223"E	1.00	1.00	18.00	No	09 Jul 2022
321	Rasmin 1	Harum Sari Village, Tamiang Hulu Sub District, Tamiang District, Aceh Province, Indonesia	4°14'16.862"E	97°55'38.676"E	0.40	0.40	7.20	No	09 Jul 2022
321	Rasmin 2	Harum Sari Village, Tamiang Hulu Sub District, Tamiang District, Aceh Province, Indonesia	4°14'17.936"E	97°55'40.694"E	0.44	0.44	7.88	No	09 Jul 2022
322	Rastum	Bengkelang Village, Bandar Pusaka Sub District, Tamiang District, Aceh Province, Indonesia	4°18'25.853"E	97°49'27.754"E	1.00	1.00	18.00	No	09 Jul 2022
323	Raha 1	Juar Village, Sekera Sub District, Tamiang District, Aceh Province, Indonesia	4°17'13.245"E	97°51'33.571"E	0.64	0.64	11.53	No	09 Jul 2022
323	Raha 2	Pantai Cempaka Village, Sekera Sub District, Tamiang District, Aceh Province, Indonesia	4°17'32.284"E	97°51'47.794"E	0.37	0.37	6.73	No	09 Jul 2022
323	Raha 3	Juar Village, Sekera Sub District, Tamiang District, Aceh Province, Indonesia	4°17'41.222"E	97°51'43.176"E	0.77	0.77	13.86	No	09 Jul 2022
324	Rasmi M	Pengdam Village, Bandar Pusaka Sub District, Tamiang District, Aceh Province, Indonesia	4°18'34.936"E	97°50'10.652"E	1.70	1.70	30.60	No	09 Jul 2022
325	Rasmi N	Blang Kanda Village, Bandar Pusaka Sub District, Tamiang District, Aceh Province, Indonesia	4°14'43.703"E	97°51'19.996"E	1.46	1.46	26.32	No	09 Jul 2022
326	Rianto Wibisono	Blang Kanda Village, Bandar Pusaka Sub District, Tamiang District, Aceh Province, Indonesia	4°14'58.100"E	97°50'18.100"E	1.00	1.00	29.38	No	09 Jul 2022
327	Rianto Wanso	Blang Kanda Village, Bandar Pusaka Sub District, Tamiang District, Aceh Province, Indonesia	4°14'53.532"E	97°50'2.294"E	1.00	1.00	18.00	No	09 Jul 2022
327	Riudan Zeanal Abidin	Pengdam Village, Bandar Pusaka Sub District, Tamiang District, Aceh Province, Indonesia	4°18'39.428"E	97°50'20.769"E	0.65	0.65	11.70	No	09 Jul 2022
328	Rikiansyah 1	Bengkelang Village, Bandar Pusaka Sub District, Tamiang District, Aceh Province, Indonesia	4°18'27.495"E	97°48'47.444"E	1.40	1.40	25.20	No	09 Jul 2022
328	Rikiansyah 2	Bengkelang Village, Bandar Pusaka Sub District, Tamiang District, Aceh Province, Indonesia	4°18'37.843"E	97°49'10.742"E	0.97	0.97	17.50	No	09 Jul 2022
329	Rina Sari	Bengkelang Village, Bandar Pusaka Sub District, Tamiang District, Aceh Province, Indonesia	4°18'58.861"E	97°49'2.758"E	0.25	0.25	4.50	No	09 Jul 2022
330	Rinad Alhtal	Sula Makmur Village, Tenggulun Sub District, Tamiang District, Aceh Province, Indonesia	4°18'40.766"E	97°51'31.208"E	1.85	1.85	33.39	No	09 Jul 2022
331	Risamanto 1	Blang Kanda Village, Bandar Pusaka Sub District, Tamiang District, Aceh Province, Indonesia	4°14'23.130"E	97°51'23.130"E	0.15	0.15	2.64	No	09 Jul 2022
331	Risamanto 2	Blang Kanda Village, Bandar Pusaka Sub District, Tamiang District, Aceh Province, Indonesia	4°14'28.084"E	97°51'26.758"E	0.67	0.67	11.87	No	09 Jul 2022
332	Risau	Pengdam Village, Bandar Pusaka Sub District, Tamiang District, Aceh Province, Indonesia	4°17'53.286"E	97°50'6.147"E	1.18	1.18	21.24	No	09 Jul 2022
333	Riky A Hanif	Wonosari Village, Tamiang Hulu Sub District, Tamiang District, Aceh Province, Indonesia	4°18'8.824"E	97°53'38.979"E	1.11	1.11	19.98	No	09 Jul 2022</

362	Sahdan 1	Sulum Village, Sekerek Sub District, Tamiang District, Aceh Province, Indonesia	4°18'55.747"E	97°51'11.178"N	2.00	2.00	36.00	No	09 Jul 2022
	Sahdan 2	Sulum Village, Sekerek Sub District, Tamiang District, Aceh Province, Indonesia	4°18'46.485"E	97°51'35.839"N	1.72	1.72	30.96	No	09 Jul 2022
	Sahdan 3	Sulum Village, Sekerek Sub District, Tamiang District, Aceh Province, Indonesia	4°18'39.605"E	97°51'28.308"N	0.68	0.68	1.44	No	09 Jul 2022
	Sahdan 4	Pengdam Village, Sekerek Sub District, Tamiang District, Aceh Province, Indonesia	4°18'38.074"E	97°51'32.472"N	1.40	1.40	25.26	No	09 Jul 2022
	Sahdan 5	Sulum Village, Sekerek Sub District, Tamiang District, Aceh Province, Indonesia	4°18'46.485"E	97°51'28.308"N	2.12	2.12	38.18	No	09 Jul 2022
363	Sahr 1	Bengkelang Village, Bandar Pusaka Sub District, Tamiang District, Aceh Province, Indonesia	4°18'44.849"E	97°49'28.807"N	0.30	0.30	5.40	No	09 Jul 2022
	Sahr 2	Bengkelang Village, Bandar Pusaka Sub District, Tamiang District, Aceh Province, Indonesia	4°18'47.627"E	97°49'27.863"N	0.25	0.25	4.50	No	09 Jul 2022
	Sahr 3	Bengkelang Village, Bandar Pusaka Sub District, Tamiang District, Aceh Province, Indonesia	4°18'46.861"E	97°49'37.591"N	1.28	1.28	22.96	No	09 Jul 2022
364	Sahrulian	Bengkelang Village, Bandar Pusaka Sub District, Tamiang District, Aceh Province, Indonesia	4°18'49.581"E	97°48'38.367"N	2.00	2.00	36.00	No	09 Jul 2022
	Said A1	Juar Village, Sekerek Sub District, Tamiang District, Aceh Province, Indonesia	4°17'43.367"E	97°51'52.226"N	0.25	0.25	4.52	No	09 Jul 2022
	Said A2	Juar Village, Sekerek Sub District, Tamiang District, Aceh Province, Indonesia	4°18'42.780"E	97°52'4.499"N	0.51	0.51	9.18	No	09 Jul 2022
	Said A3	Juar Village, Sekerek Sub District, Tamiang District, Aceh Province, Indonesia	4°18'22.106"E	97°52'18.340"N	1.46	1.46	26.34	No	09 Jul 2022
	Said Aem 1	Juar Village, Sekerek Sub District, Tamiang District, Aceh Province, Indonesia	4°18'22.593"E	97°51'59.531"N	0.68	0.68	10.81	No	09 Jul 2022
	Said Aem 2	Juar Village, Sekerek Sub District, Tamiang District, Aceh Province, Indonesia	4°18'22.777"E	97°52'0.222"N	0.27	0.27	4.86	No	09 Jul 2022
366	Saidah	Bengkelang Village, Bandar Pusaka Sub District, Tamiang District, Aceh Province, Indonesia	4°19'0.035"E	97°49'11.249"N	0.28	0.28	5.08	No	09 Jul 2022
368	Saidina	Pengdam Village, Bandar Pusaka Sub District, Tamiang District, Aceh Province, Indonesia	4°18'4.065"E	97°49'39.745"N	1.79	1.79	32.22	No	09 Jul 2022
	Saidi Bahi Abu Bakar	Pematang Duri Village, Sekerek Sub District, Tamiang District, Aceh Province, Indonesia	4°18'34.635"E	97°52'40.494"N	1.00	1.00	18.00	No	09 Jul 2022
370	Saifin 1	Pematang Duri Village, Sekerek Sub District, Tamiang District, Aceh Province, Indonesia	4°18'21.018"E	97°52'43.296"N	2.00	2.00	36.00	No	09 Jul 2022
	Saifin 2	Pematang Duri Village, Sekerek Sub District, Tamiang District, Aceh Province, Indonesia	4°18'22.748"E	97°52'39.536"N	0.50	0.50	9.00	No	09 Jul 2022
371	Salam	Pengdam Village, Bandar Pusaka Sub District, Tamiang District, Aceh Province, Indonesia	4°18'44.556"E	97°50'28.647"N	0.50	0.50	9.00	No	09 Jul 2022
372	Salleman	Pengdam Village, Bandar Pusaka Sub District, Tamiang District, Aceh Province, Indonesia	4°18'34.069"E	97°50'3.596"N	0.25	0.25	4.53	No	09 Jul 2022
	Salleman 2	Pengdam Village, Bandar Pusaka Sub District, Tamiang District, Aceh Province, Indonesia	4°18'34.069"E	97°50'3.596"N	3.43	3.43	61.74	No	09 Jul 2022
	Salleh M	Juar Village, Sekerek Sub District, Tamiang District, Aceh Province, Indonesia	4°18'35.266"E	97°51'47.068"N	0.40	0.40	7.20	No	09 Jul 2022
375	Sami	Wonosari Village, Tamiang Hulu Sub District, Tamiang District, Aceh Province, Indonesia	4°18'13.755"E	97°54'33.847"N	2.05	2.05	36.97	No	09 Jul 2022
	Sami 1	Wonosari Village, Tamiang Hulu Sub District, Tamiang District, Aceh Province, Indonesia	4°18'15.606"E	97°55'0.148"N	1.15	1.15	2.65	No	09 Jul 2022
	Sami 2	Wonosari Village, Tamiang Hulu Sub District, Tamiang District, Aceh Province, Indonesia	4°18'19.978"E	97°55'1.692"N	1.23	1.23	22.18	No	09 Jul 2022
377	Samsahar 1	Sulum Village, Sekerek Sub District, Tamiang District, Aceh Province, Indonesia	4°18'49.399"E	97°51'8.984"N	1.23	1.23	22.18	No	09 Jul 2022
	Samsahar 2	Sulum Village, Sekerek Sub District, Tamiang District, Aceh Province, Indonesia	4°18'49.187"E	97°51'55.450"N	0.77	0.77	13.78	No	09 Jul 2022
378	Samsul	Bengkelang Village, Bandar Pusaka Sub District, Tamiang District, Aceh Province, Indonesia	4°18'55.502"E	97°48'41.555"N	0.99	0.99	17.52	No	09 Jul 2022
379	Samsul Athin 1	Bengkelang Village, Bandar Pusaka Sub District, Tamiang District, Aceh Province, Indonesia	4°18'11.453"E	97°48'40.153"N	1.40	1.40	25.26	No	09 Jul 2022
	Samsul Athin 2	Sulum Village, Sekerek Sub District, Tamiang District, Aceh Province, Indonesia	4°18'53.242"E	97°51'51.530"N	0.68	0.68	12.29	No	09 Jul 2022
	Sani 1	Sulum Village, Sekerek Sub District, Tamiang District, Aceh Province, Indonesia	4°18'51.295"E	97°51'0.867"N	0.52	0.52	9.42	No	09 Jul 2022
381	Sani 2	Pantai Cempaka Village, Bandar Pusaka Sub District, Tamiang District, Aceh Province, Indonesia	4°17'12.969"E	97°50'27.900"N	1.58	1.58	28.44	No	09 Jul 2022
382	San Wahyuni	Pengdam Village, Bandar Pusaka Sub District, Tamiang District, Aceh Province, Indonesia	4°18'44.129"E	97°49'50.608"N	0.60	0.60	10.80	No	09 Jul 2022
	Saning 1	Wonosari Village, Tamiang Hulu Sub District, Tamiang District, Aceh Province, Indonesia	4°18'16.642"E	97°55'1.594"N	0.61	0.61	10.98	No	09 Jul 2022
	Saning 2	Wonosari Village, Tamiang Hulu Sub District, Tamiang District, Aceh Province, Indonesia	4°18'16.260"E	97°55'3.645"N	0.19	0.19	3.48	No	09 Jul 2022
	Sanimin	Pengdam Village, Bandar Pusaka Sub District, Tamiang District, Aceh Province, Indonesia	4°18'21.084"E	97°50'8.938"N	0.15	0.15	2.70	No	09 Jul 2022
384	Saniw	Suka Maima Village, Sekerek Sub District, Tamiang District, Aceh Province, Indonesia	4°18'16.159"E	97°51'4.442"N	0.87	0.87	15.75	No	09 Jul 2022
386	Sarwal	Blang Kanda Village, Bandar Pusaka Sub District, Tamiang District, Aceh Province, Indonesia	4°18'51.735"E	97°57'19.111"N	1.16	1.16	20.84	No	09 Jul 2022
	Sayet 1	Blang Kanda Village, Bandar Pusaka Sub District, Tamiang District, Aceh Province, Indonesia	4°18'59.407"E	97°57'11.425"N	2.60	2.60	46.81	No	09 Jul 2022
	Sayet 2	Blang Kanda Village, Bandar Pusaka Sub District, Tamiang District, Aceh Province, Indonesia	4°18'47.299"E	97°57'16.193"N	2.60	2.60	46.81	No	09 Jul 2022
387	Seh Nurdin 1	Bengkelang Village, Bandar Pusaka Sub District, Tamiang District, Aceh Province, Indonesia	4°18'8.847"E	97°49'2.800"N	1.16	1.16	20.88	No	09 Jul 2022
	Seh Nurdin 2	Baling Karang Village, Sekerek Sub District, Tamiang District, Aceh Province, Indonesia	4°18'35.448"E	97°49'2.144"N	0.30	0.30	5.40	No	09 Jul 2022
389	Selamat A	Pengdam Village, Bandar Pusaka Sub District, Tamiang District, Aceh Province, Indonesia	4°18'54.518"E	97°50'18.145"N	0.90	0.90	16.20	No	09 Jul 2022
390	Selamat Abadi	Harum Sari Village, Tamiang Hulu Sub District, Tamiang District, Aceh Province, Indonesia	4°18'42.131"E	97°55'16.062"N	1.50	1.50	27.00	No	09 Jul 2022
391	Suka Maima	Suka Maima Village, Sekerek Sub District, Tamiang District, Aceh Province, Indonesia	4°18'16.159"E	97°51'4.442"N	0.87	0.87	15.75	No	09 Jul 2022
	Semi 1	Pematang Duri Village, Sekerek Sub District, Tamiang District, Aceh Province, Indonesia	4°18'22.634"E	97°52'22.611"N	1.50	1.50	27.00	No	09 Jul 2022
	Semi 2	Pematang Duri Village, Sekerek Sub District, Tamiang District, Aceh Province, Indonesia	4°18'9.633"E	97°52'54.594"N	0.40	0.40	7.20	No	09 Jul 2022
393	Shufy Muammar	Pengdam Village, Bandar Pusaka Sub District, Tamiang District, Aceh Province, Indonesia	4°18'15.990"E	97°50'2.981"N	0.30	0.30	5.40	No	09 Jul 2022
394	Sigit Wuljo Puspo Ajudanto	Wonosari Village, Tamiang Hulu Sub District, Tamiang District, Aceh Province, Indonesia	4°18'23.339"E	97°53'46.614"N	1.84	1.84	33.21	No	09 Jul 2022
395	Siran	Harum Sari Village, Tamiang Hulu Sub District, Tamiang District, Aceh Province, Indonesia	4°18'22.427"E	97°54'44.300"N	0.50	0.50	9.00	No	09 Jul 2022
396	Si Asah	Bengkelang Village, Bandar Pusaka Sub District, Tamiang District, Aceh Province, Indonesia	4°18'33.250"E	97°49'15.232"N	0.25	0.25	4.50	No	09 Jul 2022
397	Si Hajar	Pantai Cempaka Village, Bandar Pusaka Sub District, Tamiang District, Aceh Province, Indonesia	4°17'57.176"E	97°51'2.900"N	0.68	0.68	11.88	No	09 Jul 2022
398	Si Hilmah	Pengdam Village, Bandar Pusaka Sub District, Tamiang District, Aceh Province, Indonesia	4°18'16.990"E	97°50'6.256"N	0.52	0.52	9.36	No	09 Jul 2022
399	Si Julaeha 1	Pantai Cempaka Village, Bandar Pusaka Sub District, Tamiang District, Aceh Province, Indonesia	4°17'5.087"E	97°50'34.367"N	1.61	1.61	28.98	No	09 Jul 2022
	Si Julaeha 2	Juar Village, Sekerek Sub District, Tamiang District, Aceh Province, Indonesia	4°17'35.009"E	97°51'40.423"N	0.36	0.36	6.48	No	09 Jul 2022
400	Si Julaeha 3	Juar Village, Sekerek Sub District, Tamiang District, Aceh Province, Indonesia	4°17'31.092"E	97°51'43.630"N	0.55	0.55	9.89	No	09 Jul 2022
401	Si Rubumah	Pengdam Village, Bandar Pusaka Sub District, Tamiang District, Aceh Province, Indonesia	4°18'17.142"E	97°48'52.411"N	0.90	0.90	16.20	No	09 Jul 2022
402	Si Ramiah	Bengkelang Village, Bandar Pusaka Sub District, Tamiang District, Aceh Province, Indonesia	4°18'49.235"E	97°48'36.205"N	0.75	0.75	13.48	No	09 Jul 2022
403	Si Sapura	Pengdam Village, Bandar Pusaka Sub District, Tamiang District, Aceh Province, Indonesia	4°18'30.226"E	97°49'44.504"N	0.40	0.40	7.20	No	09 Jul 2022
404	Si Sarah	Juar Village, Sekerek Sub District, Tamiang District, Aceh Province, Indonesia	4°17'47.944"E	97°51'52.637"N	2.00	2.00	36.00	No	09 Jul 2022
405	Si Barun 1	Bengkelang Village, Bandar Pusaka Sub District, Tamiang District, Aceh Province, Indonesia	4°18'33.169"E	97°49'25.358"N	0.50	0.50	9.07	No	09 Jul 2022
406	Si Barun 2	Bengkelang Village, Bandar Pusaka Sub District, Tamiang District, Aceh Province, Indonesia	4°18'40.544"E	97°49'28.634"N	0.20	0.20	3.60	No	09 Jul 2022
407	Si Barun 3	Bengkelang Village, Bandar Pusaka Sub District, Tamiang District, Aceh Province, Indonesia	4°18'27.648"E	97°49'21.685"N	1.20	1.20	21.60	No	09 Jul 2022
408	Si Rathayu	Wonosari Village, Tamiang Hulu Sub District, Tamiang District, Aceh Province, Indonesia	4°18'59.308"E	97°54'31.993"N	0.60	0.60	10.80	No	09 Jul 2022
409	Si Rathamir Dewi	Wonosari Village, Tamiang Hulu Sub District, Tamiang District, Aceh Province, Indonesia	4°18'41.833"E	97°53'36.275"N	1.88	1.88	33.83	No	09 Jul 2022
410	Si Wahyuni	Harum Sari Village, Tamiang Hulu Sub District, Tamiang District, Aceh Province, Indonesia	4°18'59.443"E	97°54'10.464"N	0.94	0.94	16.84	No	09 Jul 2022
411	Si Wadayat 1	Sulum Village, Sekerek Sub District, Tamiang District, Aceh Province, Indonesia	4°20'54.537"E	97°50'55.675"N	0.98	0.98	17.66	No	09 Jul 2022
	Si Wadayat 2	Sulum Village, Sekerek Sub District, Tamiang District, Aceh Province, Indonesia	4°20'43.774"E	97°50'8.223"N	0.98	0.98	17.66	No	09 Jul 2022
412	Si Widang	Bengkelang Village, Bandar Pusaka Sub District, Tamiang District, Aceh Province, Indonesia	4°18'17.562"E	97°49'9.788"N	0.50	0.50	9.00	No	09 Jul 2022
413	Sudarno 1	Pematang Duri Village, Sekerek Sub District, Tamiang District, Aceh Province, Indonesia	4°18'28.942"E	97°51'28.942"N	2.00	2.00	36.00	No	09 Jul 2022
	Sudarno 2	Pematang Duri Village, Sekerek Sub District, Tamiang District, Aceh Province, Indonesia	4°18'32.123"E	97°52'19.855"N	0.20	0.20	3.60	No	09 Jul 2022
414	Sudarmanto	Blang Kanda Village, Bandar Pusaka Sub District, Tamiang District, Aceh Province, Indonesia	4°18'42.591"E	97°57'25.432"N	2.06	2.06	37.05	No	09 Jul 2022
415	Sudanto	Harum Sari Village, Tamiang Hulu Sub District, Tamiang District, Aceh Province, Indonesia	4°18'48.733"E	97°50'7.989"N	2.00	2.00	36.00	No	09 Jul 2022
416	Sudanto A	Pantai Cempaka Village, Bandar Pusaka Sub District, Tamiang District, Aceh Province, Indonesia	4°17'27.478"E	97°51'2.240"N	1.03	1.03	18.54	No	09 Jul 2022
417	Sudayadi	Sulum Village, Sekerek Sub District, Tamiang District, Aceh Province, Indonesia	4°18'49.976"E	97°51'24.512"N	0.51	0.51	9.14	No	09 Jul 2022
418	Sudman A	Harum Sari Village, Tamiang Hulu Sub District, Tamiang District, Aceh Province, Indonesia	4°18'12.478"E	97°54'38.068"N	1.00	1.00	18.00	No	09 Jul 2022
419	Sudman B	Pantai Cempaka Village, Bandar Pusaka Sub District, Tamiang District, Aceh Province, Indonesia	4°17'16.215"E	97°50'54.151"N	0.46	0.46	8.28	No	09 Jul 2022
420	Sugimen	Wonosari Village, Tamiang Hulu Sub District, Tamiang District, Aceh Province, Indonesia	4°18'13.520"E	97°53'5.985"N	0.85	0.85	15.30	No	09 Jul 2022
421	Sugiono	Wonosari Village, Tamiang Hulu Sub District, Tamiang District, Aceh Province, Indonesia	4°18'21.910"E	97°53'9.840"N	1.05	1.05	18.90	No	09 Jul 2022
422	Sugran	Wonosari Village, Tamiang Hulu Sub District, Tamiang District, Aceh Province, Indonesia	4°18'43.451"E	97°53'33.473"N	2.00	2.00	36.00	No	09 Jul 2022
423	Sugran S	Wonosari Village, Tamiang Hulu Sub District, Tamiang District, Aceh Province, Indonesia	4°18'52.469"E	97°54'15.039"N	1.30	1.30	23.40	No	09 Jul 2022
424	Sugri 1	Blang Kanda Village, Bandar Pusaka Sub District, Tamiang District, Aceh Province, Indonesia	4°18'56.021"E	97°57'29.066"N	2.30	2.30	41.40	No	09 Jul 2022
425	Sugri 2	Blang Kanda Village, Bandar Pusaka Sub District, Tamiang District, Aceh Province, Indonesia	4°18'16.663"E	97°57'41.170"N	0.02	0.02	0.30	No	09 Jul 2022
426	Suhan	Harum Sari Village, Tamiang Hulu Sub District, Tamiang District, Aceh Province, Indonesia	4°18'54.122"E	97°55'14.897"N	1.06	1.06	19.04	No	09 Jul 2022
427	Suheman A 1	Sulum Village, Sekerek Sub District, Tamiang District, Aceh Province, Indonesia	4°18'49.875"E	97°51'19.940"N	0.11	0.11	2.06	No	09 Jul 2022
428	Suheman A 2	Sulum Village, Sekerek Sub District, Tamiang District, Aceh Province, Indonesia	4°18'57.455"E	97°52'23.929"N	0.22	0.22	3.89	No	09 Jul 2022
429	Suheman B 1	Juar Village, Sekerek Sub District, Tamiang District, Aceh Province, Indonesia	4°18'34.144"E	97°51'38.889"N	0.32	0.32	5.88	No	09 Jul 2022
430	Suheman B 2	Juar Village, Sekerek Sub District, Tamiang District, Aceh Province, Indonesia	4°18'29.185"E	97°51'41.117"N	0.41	0.41	7.34	No	09 Jul 2022
431	Suhemanto, SPd 1	Blang Kanda Village, Bandar Pusaka Sub District, Tamiang District, Aceh Province, Indonesia	4°18'36.093"E	97°56'22.740"N	0.59	0.59	10.65	No	09 Jul 2022
432</									

460	Sunadi	Harum Sari Village, Tamiang Hulu Sub District, Tamiang District, Aceh Province, Indonesia	4° 14' 32.255" E	97° 55' 6.836" N	1.10	1.10	19.80	No	09 Jul 2022
461	Suniani	Wonosan Village, Tamiang Hulu Sub District, Tamiang District, Aceh Province, Indonesia	4° 14' 16.380" E	97° 54' 18.305" N	0.18	0.18	3.24	No	09 Jul 2022
462	Sunat	Wonosan Village, Tamiang Hulu Sub District, Tamiang District, Aceh Province, Indonesia	4° 13' 58.957" E	97° 54' 31.008" N	0.66	0.66	11.88	No	09 Jul 2022
	Sunif 1	Sulum Village, Sekera Sub District, Tamiang District, Aceh Province, Indonesia	4° 18' 51.106" E	97° 53' 6.884" N	1.85	1.85	33.39	No	09 Jul 2022
	Sunif 2	Sulum Village, Sekera Sub District, Tamiang District, Aceh Province, Indonesia	4° 18' 10.768" E	97° 54' 25.772" N	0.58	0.58	10.44	No	09 Jul 2022
	Sunif 3	Sulum Village, Sekera Sub District, Tamiang District, Aceh Province, Indonesia	4° 18' 14.329" E	97° 53' 28.369" N	1.31	1.31	23.54	No	09 Jul 2022
	Sunif 4	Sulum Village, Sekera Sub District, Tamiang District, Aceh Province, Indonesia	4° 18' 54.549" E	97° 51' 16.222" N	1.98	1.98	35.70	No	09 Jul 2022
464	Surya Saputra	Harum Sari Village, Tamiang Hulu Sub District, Tamiang District, Aceh Province, Indonesia	4° 15' 5.846" E	97° 54' 7.900" N	2.00	2.00	36.00	No	09 Jul 2022
465	Sutami	Wonosan Village, Tamiang Hulu Sub District, Tamiang District, Aceh Province, Indonesia	4° 15' 51.687" E	97° 53' 2.147" N	2.10	2.10	37.80	No	09 Jul 2022
466	Sulaf 1	Harum Sari Village, Tamiang Hulu Sub District, Tamiang District, Aceh Province, Indonesia	4° 14' 8.349" E	97° 55' 19.554" N	1.00	1.00	18.00	No	09 Jul 2022
467	Sulaf 2	Harum Sari Village, Tamiang Hulu Sub District, Tamiang District, Aceh Province, Indonesia	4° 14' 21.460" E	97° 55' 7.779" N	0.80	0.80	14.40	No	09 Jul 2022
467	Sulrenio 1	Harum Sari Village, Tamiang Hulu Sub District, Tamiang District, Aceh Province, Indonesia	4° 12' 56.559" E	97° 54' 14.138" N	1.00	1.00	18.00	No	09 Jul 2022
467	Sulrenio 2	Harum Sari Village, Tamiang Hulu Sub District, Tamiang District, Aceh Province, Indonesia	4° 12' 59.964" E	97° 54' 15.120" N	2.00	2.00	36.00	No	09 Jul 2022
468	Sulitino	Blang Kandi Village, Bandar Pusaka Sub District, Tamiang District, Aceh Province, Indonesia	4° 14' 8.330" E	97° 57' 27.656" N	1.24	1.24	22.27	No	09 Jul 2022
469	Suwardi	Sulum Village, Sekera Sub District, Tamiang District, Aceh Province, Indonesia	4° 19' 4.977" E	97° 51' 8.738" N	1.25	1.25	22.46	No	09 Jul 2022
470	Suwar A	Blang Kandi Village, Bandar Pusaka Sub District, Tamiang District, Aceh Province, Indonesia	4° 14' 58.388" E	97° 57' 29.150" N	0.02	0.02	0.32	No	09 Jul 2022
471	Suwar B 1	Wonosan Village, Tamiang Hulu Sub District, Tamiang District, Aceh Province, Indonesia	4° 13' 51.042" E	97° 54' 10.086" N	0.68	0.68	12.32	No	09 Jul 2022
471	Suwar B 2	Wonosan Village, Tamiang Hulu Sub District, Tamiang District, Aceh Province, Indonesia	4° 13' 29.148" E	97° 53' 56.300" N	2.21	2.21	39.74	No	09 Jul 2022
472	Suwana	Wonosan Village, Tamiang Hulu Sub District, Tamiang District, Aceh Province, Indonesia	4° 14' 53.870" E	97° 53' 44.129" N	1.27	1.27	22.77	No	09 Jul 2022
473	Suwarno	Harum Sari Village, Tamiang Hulu Sub District, Tamiang District, Aceh Province, Indonesia	4° 14' 19.177" E	97° 55' 13.243" N	0.58	0.58	10.37	No	09 Jul 2022
474	Suwati	Sulum Village, Sekera Sub District, Tamiang District, Aceh Province, Indonesia	4° 19' 6.829" E	97° 51' 7.892" N	0.73	0.73	13.21	No	09 Jul 2022
475	Syafi	Pematang Duri Village, Sekera Sub District, Tamiang District, Aceh Province, Indonesia	4° 19' 11.944" E	97° 52' 31.892" N	2.00	2.00	36.00	No	09 Jul 2022
477	Syahnid 1	Juar Village, Sekera Sub District, Tamiang District, Aceh Province, Indonesia	4° 17' 38.385" E	97° 51' 41.491" N	4.23	4.23	76.14	No	09 Jul 2022
477	Syahnid 2	Juar Village, Sekera Sub District, Tamiang District, Aceh Province, Indonesia	4° 17' 38.721" E	97° 51' 33.619" N	0.27	0.27	4.81	No	09 Jul 2022
477	Syahnid Pranata	Pantai Cempaka Village, Bandar Pusaka Sub District, Tamiang District, Aceh Province, Indonesia	4° 16' 53.556" E	97° 50' 46.789" N	1.83	1.83	32.94	No	09 Jul 2022
478	Syahnid	Pantai Cempaka Village, Bandar Pusaka Sub District, Tamiang District, Aceh Province, Indonesia	4° 17' 37.831" E	97° 52' 1.021" N	0.20	0.20	3.60	No	09 Jul 2022
479	Syahnid Pranata	Pantai Cempaka Village, Bandar Pusaka Sub District, Tamiang District, Aceh Province, Indonesia	4° 17' 47.333" E	97° 51' 7.296" N	0.30	0.30	5.40	No	09 Jul 2022
480	Syaiful Niam 1	Pematang Duri Village, Sekera Sub District, Tamiang District, Aceh Province, Indonesia	4° 18' 14.724" E	97° 52' 56.177" N	0.50	0.50	9.00	No	09 Jul 2022
480	Syaiful Niam 2	Kampung Duri Village, Rantau Sub District, Tamiang District, Aceh Province, Indonesia	4° 19' 29.253" E	97° 52' 46.858" N	0.28	0.28	4.98	No	09 Jul 2022
481	Syam A1	Sulum Village, Sekera Sub District, Tamiang District, Aceh Province, Indonesia	4° 19' 18.705" E	97° 51' 11.497" N	1.31	1.31	23.62	No	09 Jul 2022
481	Syam A2	Sulum Village, Sekera Sub District, Tamiang District, Aceh Province, Indonesia	4° 19' 14.113" E	97° 51' 4.866" N	1.31	1.31	23.62	No	09 Jul 2022
481	Syam A3	Sulum Village, Sekera Sub District, Tamiang District, Aceh Province, Indonesia	4° 19' 16.818" E	97° 51' 8.442" N	1.31	1.31	23.62	No	09 Jul 2022
482	Syapri 1	Blang Kandi Village, Bandar Pusaka Sub District, Tamiang District, Aceh Province, Indonesia	4° 14' 8.226" E	97° 57' 3.686" N	0.32	0.32	5.76	No	09 Jul 2022
482	Syapri 2	Blang Kandi Village, Bandar Pusaka Sub District, Tamiang District, Aceh Province, Indonesia	4° 14' 32.625" E	97° 57' 30.023" N	0.12	0.12	2.08	No	09 Jul 2022
483	Syanuddin A1	Sulum Village, Sekera Sub District, Tamiang District, Aceh Province, Indonesia	4° 19' 26.107" E	97° 51' 21.053" N	1.73	1.73	31.13	No	09 Jul 2022
483	Syanuddin A2	Sulum Village, Sekera Sub District, Tamiang District, Aceh Province, Indonesia	4° 19' 18.065" E	97° 51' 4.703" N	1.65	1.65	29.52	No	09 Jul 2022
484	Syanuddin C	Pantai Cempaka Village, Bandar Pusaka Sub District, Tamiang District, Aceh Province, Indonesia	4° 17' 29.623" E	97° 52' 29.623" N	0.38	0.38	6.84	No	09 Jul 2022
485	Syanudin	Juar Village, Sekera Sub District, Tamiang District, Aceh Province, Indonesia	4° 18' 11.818" E	97° 51' 36.938" N	1.00	1.00	18.00	No	09 Jul 2022
486	Syerpudin 1	Bengkelang Village, Bandar Pusaka Sub District, Tamiang District, Aceh Province, Indonesia	4° 18' 44.037" E	97° 48' 52.452" N	2.80	2.80	50.40	No	09 Jul 2022
486	Syerpudin 2	Bengkelang Village, Bandar Pusaka Sub District, Tamiang District, Aceh Province, Indonesia	4° 19' 24.492" E	97° 48' 59.333" N	3.00	3.00	54.00	No	09 Jul 2022
487	Syerpudin 3	Baling Karang Village, Sekera Sub District, Tamiang District, Aceh Province, Indonesia	4° 18' 56.333" E	97° 49' 11.327" N	1.75	1.75	31.50	No	09 Jul 2022
487	T. A. L. Muslim	Pantai Cempaka Village, Bandar Pusaka Sub District, Tamiang District, Aceh Province, Indonesia	4° 16' 50.015" E	97° 51' 40.188" N	1.50	1.50	27.00	No	09 Jul 2022
488	Talep Suhendra	Harum Sari Village, Tamiang Hulu Sub District, Tamiang District, Aceh Province, Indonesia	4° 13' 6.348" E	97° 54' 45.640" N	1.00	1.00	18.00	No	09 Jul 2022
489	Tamo	Wonosan Village, Tamiang Hulu Sub District, Tamiang District, Aceh Province, Indonesia	4° 19' 18.604" E	97° 53' 28.627" N	0.83	0.83	15.00	No	09 Jul 2022
489	Taufik Setawan	Wonosan Village, Tamiang Hulu Sub District, Tamiang District, Aceh Province, Indonesia	4° 19' 52.760" E	97° 53' 1.320" N	1.32	1.32	23.76	No	09 Jul 2022
491	Teti Embun 1	Blang Kandi Village, Bandar Pusaka Sub District, Tamiang District, Aceh Province, Indonesia	4° 13' 51.325" E	97° 57' 28.244" N	0.33	0.33	5.88	No	09 Jul 2022
491	Teti Embun 2	Blang Kandi Village, Bandar Pusaka Sub District, Tamiang District, Aceh Province, Indonesia	4° 13' 55.054" E	97° 57' 25.174" N	0.23	0.23	4.23	No	09 Jul 2022
492	Tijah 1	Bengkelang Village, Bandar Pusaka Sub District, Tamiang District, Aceh Province, Indonesia	4° 18' 32.434" E	97° 49' 8.704" N	1.00	1.00	18.00	No	09 Jul 2022
492	Tijah 2	Bengkelang Village, Bandar Pusaka Sub District, Tamiang District, Aceh Province, Indonesia	4° 18' 37.595" E	97° 49' 13.637" N	1.60	1.60	28.80	No	09 Jul 2022
493	Titi Tamata	Wonosan Village, Tamiang Hulu Sub District, Tamiang District, Aceh Province, Indonesia	4° 13' 57.794" E	97° 54' 33.237" N	0.66	0.66	11.88	No	09 Jul 2022
494	Tuah	Pengdam Village, Bandar Pusaka Sub District, Tamiang District, Aceh Province, Indonesia	4° 18' 25.817" E	97° 50' 21.544" N	3.20	3.20	57.60	No	09 Jul 2022
495	Tuah D	Pengdam Village, Bandar Pusaka Sub District, Tamiang District, Aceh Province, Indonesia	4° 17' 21.300" E	97° 48' 54.224" N	1.01	1.01	18.22	No	09 Jul 2022
496	Tugim	Harum Sari Village, Tamiang Hulu Sub District, Tamiang District, Aceh Province, Indonesia	4° 14' 2.384" E	97° 55' 19.463" N	0.80	0.80	14.40	No	09 Jul 2022
497	Tugmen 2	Harum Sari Village, Tamiang Hulu Sub District, Tamiang District, Aceh Province, Indonesia	4° 14' 20.041" E	97° 55' 26.308" N	0.56	0.56	10.13	No	09 Jul 2022
497	Tugmen 3	Wonosan Village, Tamiang Hulu Sub District, Tamiang District, Aceh Province, Indonesia	4° 14' 42.330" E	97° 53' 7.296" N	1.50	1.50	27.00	No	09 Jul 2022
498	Tukiran	Wonosan Village, Tamiang Hulu Sub District, Tamiang District, Aceh Province, Indonesia	4° 14' 48.464" E	97° 53' 47.537" N	1.45	1.45	26.09	No	09 Jul 2022
499	Ucak Jemala	Pengdam Village, Bandar Pusaka Sub District, Tamiang District, Aceh Province, Indonesia	4° 18' 17.728" E	97° 50' 7.867" N	0.56	0.56	10.08	No	09 Jul 2022
500	Uji Hamdani	Juar Village, Sekera Sub District, Tamiang District, Aceh Province, Indonesia	4° 17' 28.276" E	97° 51' 37.814" N	0.37	0.37	6.66	No	09 Jul 2022
501	Umar 1	Pematang Duri Village, Sekera Sub District, Tamiang District, Aceh Province, Indonesia	4° 18' 58.429" E	97° 52' 16.419" N	0.70	0.70	12.60	No	09 Jul 2022
501	Umar 2	Pematang Duri Village, Sekera Sub District, Tamiang District, Aceh Province, Indonesia	4° 18' 59.699" E	97° 52' 17.603" N	0.02	0.02	0.36	No	09 Jul 2022
501	Umar 3	Pematang Duri Village, Sekera Sub District, Tamiang District, Aceh Province, Indonesia	4° 19' 34.261" E	97° 52' 30.974" N	1.00	1.00	18.00	No	09 Jul 2022
502	Umar Muhtar	Wonosan Village, Tamiang Hulu Sub District, Tamiang District, Aceh Province, Indonesia	4° 13' 36.611" E	97° 53' 12.804" N	1.20	1.20	21.60	No	09 Jul 2022
503	Umar Watis	Bengkelang Village, Bandar Pusaka Sub District, Tamiang District, Aceh Province, Indonesia	4° 18' 36.180" E	97° 49' 21.581" N	0.50	0.50	9.00	No	09 Jul 2022
504	Umi Kalsum	Harum Sari Village, Tamiang Hulu Sub District, Tamiang District, Aceh Province, Indonesia	4° 13' 19.240" E	97° 54' 43.652" N	0.90	0.90	16.14	No	09 Jul 2022
505	Unjilawati	Wonosan Village, Tamiang Hulu Sub District, Tamiang District, Aceh Province, Indonesia	4° 13' 54.916" E	97° 54' 11.648" N	0.70	0.70	12.60	No	09 Jul 2022
505	Usman 1	Juar Village, Sekera Sub District, Tamiang District, Aceh Province, Indonesia	4° 18' 21.456" E	97° 51' 59.267" N	0.47	0.47	8.42	No	09 Jul 2022
505	Usman 2	Juar Village, Sekera Sub District, Tamiang District, Aceh Province, Indonesia	4° 17' 43.766" E	97° 51' 53.104" N	0.46	0.46	8.28	No	09 Jul 2022
505	Usman 3	Juar Village, Sekera Sub District, Tamiang District, Aceh Province, Indonesia	4° 18' 6.742" E	97° 52' 6.991" N	0.63	0.63	11.34	No	09 Jul 2022
505	Usman S 1	Pematang Duri Village, Sekera Sub District, Tamiang District, Aceh Province, Indonesia	4° 18' 41.841" E	97° 52' 22.971" N	0.04	0.04	0.72	No	09 Jul 2022
505	Usman S 2	Pematang Duri Village, Sekera Sub District, Tamiang District, Aceh Province, Indonesia	4° 18' 40.215" E	97° 52' 22.848" N	0.50	0.50	9.00	No	09 Jul 2022
505	Usman S 3	Pematang Duri Village, Sekera Sub District, Tamiang District, Aceh Province, Indonesia	4° 18' 11.280" E	97° 52' 49.510" N	4.00	4.00	72.00	No	09 Jul 2022
508	Waga	Wonosan Village, Tamiang Hulu Sub District, Tamiang District, Aceh Province, Indonesia	4° 14' 27.245" E	97° 53' 41.272" N	0.51	0.51	9.25	No	09 Jul 2022
509	Wagmin	Wonosan Village, Tamiang Hulu Sub District, Tamiang District, Aceh Province, Indonesia	4° 14' 4.237" E	97° 54' 19.914" N	0.62	0.62	11.16	No	09 Jul 2022
510	Wagino 1	Pematang Duri Village, Sekera Sub District, Tamiang District, Aceh Province, Indonesia	4° 18' 24.433" E	97° 52' 41.336" N	0.20	0.20	3.60	No	09 Jul 2022
510	Wagino 2	Pematang Duri Village, Sekera Sub District, Tamiang District, Aceh Province, Indonesia	4° 18' 24.747" E	97° 52' 43.266" N	0.50	0.50	9.00	No	09 Jul 2022
511	Wagiran	Wonosan Village, Tamiang Hulu Sub District, Tamiang District, Aceh Province, Indonesia	4° 16' 2.288" E	97° 53' 45.864" N	1.00	1.00	18.00	No	09 Jul 2022
512	Wagyan	Wonosan Village, Tamiang Hulu Sub District, Tamiang District, Aceh Province, Indonesia	4° 14' 13.047" E	97° 54' 13.358" N	0.78	0.78	14.04	No	09 Jul 2022
513	Wahyu Nanda	Pantai Cempaka Village, Bandar Pusaka Sub District, Tamiang District, Aceh Province, Indonesia	4° 17' 43.975" E	97° 50' 33.705" N	3.57	3.57	64.22	No	09 Jul 2022
514	Wahyudin	Wonosan Village, Tamiang Hulu Sub District, Tamiang District, Aceh Province, Indonesia	4° 14' 15.209" E	97° 54' 20.466" N	1.20	1.20	21.60	No	09 Jul 2022
515	Wahyunnah	Pengdam Village, Bandar Pusaka Sub District, Tamiang District, Aceh Province, Indonesia	4° 18' 18.063" E	97° 50' 12.125" N	1.43	1.43	25.74	No	09 Jul 2022
516	Warasem	Harum Sari Village, Tamiang Hulu Sub District, Tamiang District, Aceh Province, Indonesia	4° 14' 49.964" E	97° 55' 10.413" N	0.38	0.38	6.75	No	09 Jul 2022
517	Wasmin	Harum Sari Village, Tamiang Hulu Sub District, Tamiang District, Aceh Province, Indonesia	4° 14' 27.867" E	97° 55' 33.032" N	0.96	0.96	17.02	No	09 Jul 2022
518	Welman	Pengdam Village, Bandar Pusaka Sub District, Tamiang District, Aceh Province, Indonesia	4° 18' 9.279" E	97° 50' 28.182" N	1.82	1.82	32.76	No	09 Jul 2022
519	Wibi April Diriansa	Wonosan Village, Tamiang Hulu Sub District, Tamiang District, Aceh Province, Indonesia	4° 14' 36.944" E	97° 53' 46.283" N	0.34	0.34	6.12	No	09 Jul 2022
520	Widodo	Wonosan Village, Tamiang Hulu Sub District, Tamiang District, Aceh Province, Indonesia	4° 14' 51.472" E	97° 52' 32.526" N	1.54	1.54	27.72	No	09 Jul 2022
521	Windi Agustian	Wonosan Village, Tamiang Hulu Sub District, Tamiang District, Aceh Province, Indonesia	4° 13' 39.936" E	97° 53' 37.087" N	0.58	0.58	10.44	No	09 Jul 2022
522	Yakup 1	Blang Kandi Village, Bandar Pusaka Sub District, Tamiang District, Aceh Province, Indonesia	4° 14' 40.588" E	97° 57' 19.172" N	0.15	0.15	2.62	No	09 Jul 2022
523	Yanto S	Wonosan Village, Tamiang Hulu Sub District, Tamiang District, Aceh Province, Indonesia	4° 14' 15.203" E	97° 53' 47.188" N	1.49	1.49	26.77	No	09 Jul 2022
524	Yasmi Yat 1	Harum Sari Village, Tamiang Hulu Sub District, Tamiang District, Aceh Province, Indonesia	4° 14' 3.988" E	97° 55' 17.066" N	1.00	1.00	18.00	No	09 Jul 2022
524	Yasmi Yat 2	Harum Sari Village, Tamiang Hulu Sub District, Tamiang District, Aceh Province, Indonesia	4° 13' 26.048" E	97° 54' 43.063" N	1.22	1.22	21.92	No	09 Jul 2022
525	Yahyo 1	Perkebunan Pulau Tiga Village, Tamiang Hulu Sub District, Tamiang District, Aceh Province, Indonesia	4° 12' 28.070" E	97° 54' 20.613" N	1.35	1.35	24.31	No	09 Jul 2022
525	Yahyo 2	Harum Sari Village, Tamiang Hulu Sub District, Tamiang District, Aceh Province, Indonesia	4° 12' 46.006" E	97° 54' 31.974" N	1.62	1.62	29.19	No	09 Jul 2022
525	Yahyo 3	Perkebunan Village, Tamiang Hulu Sub District, Tamiang District							

Locations maps of the unit of certifications are:



Mutuagung Lestari, is also known Mutu International (MUTU), and has started as inspection, laboratory, and Certification body since 1990. As a private national company and supported with highly committed professionals, MUTU has gained recognition nationally and internationally. Since June 2003, MUTU has received recognition from the Ministry of Agriculture, Forestry, and Fishery of Japan (MAFF) as registered overseas certification body (ROCB). MUTU certify and mark products with Japan agriculture standard (JAS) covering Indonesia, Myanmar, Cambodia, Malaysia, Vietnam, Timor Leste, Philippines, Papua New Guinea and China. MUTU is the first ROCB in Asia. National Accreditation Committee has accredited MUTU as Quality Management System certification body (ISO 9001:2015) and Environmental Management System certification body (ISO 14001:2015). Indonesia Ecolabelling Institute (LEI) has also accredited MUTU as Sustainable Forest Management System certification body, Certification Body of Indonesian Sustainable Palm Oil (ISPO), Since March 2014, MUTU has been accredited by ASI (Accreditation Services International) as a RSPO certification body.

The auditor team for the certification assessment will be led of **Moh. Arif Yusni** and other team auditor from PT Mutuagung Lestari, consist of:

Audit Team	Role/ Area of Requirement	Qualification and Experience
Moh Arif Yusni	Legality, TBP, Partial Certification, Environment aspect, Waste Management, GHG and Conservation.	Indonesian citizen. Bachelor of Agriculture, majoring in Plant Protection. Has experience as an operational staff at a private oil palm plantation company in Indonesia on 2010 to 2012. Has attended several trainings, i.e.: ISO 19011, ISO 9001; ISO 14001, SA 8000, RSPO lead auditor course in 2014, ISPO lead auditor, OHS expert, OHS auditor based on National Government No. 50/2012, SCCS, RSPO and ISPO Lead auditor refresher course in 2021 etc. Has conducting ISPO, RSPO and MSPO audit as an auditor and lead

		auditor with expertise on best management practices for estate and mill, legality, worker welfare, safety, social, environment, conservation, transparency, long term economic management plan and supply chain for palm oil mill aspects.
Radytio Puspanjana	Environment, HCV, Social, and GHG Aspects.	Indonesian Citizen. Bachelor of Agriculture, majoring in Soil Science. Agriculture Faculty. He was working as honorarium Officer at the Riau Province Plantation Agency in the division of huge estate for 1 year. The participated trainings are Survey and Mapping (GIS) Training which was held by National GMT, ISPO auditor training, ISO 9001/2008 auditor training, ISO 14001/2004 auditor training, IHT Geospatial Information System, IHT High Conservation Value, IHT Environmental Impact Assessment, IHT Green House Gas and RSPO Lead Auditor Course by Checkmark Training. Since 2015 has been following many audit as auditor base on Best Management Practice and Environment.
Kiki Fadli	Best Management Practice and OHS	Bachelor of Agricultural Engineering, Agricultural Engineering Study Program. Has experience working in the sustainability department in private and state-owned oil palm plantations. Has attended training on Lead Auditor ISPO, Lead Auditor RSPO, General OHS Expert, ISO 9001:2008, ISO 14001:2015, ISO 17021, ISO 17065, HCV, SMK3.

PT Mutuagung Lestari invites stakeholders to provide comments (if any) on any of the following matters related to the site for assessment:

- a. Environmental protection within the estate or mill including use of pesticide and waste management.
- b. Biodiversity within the estate and mill
- c. Contribution for local development and opportunities for employment
- d. Provision of housing, sanitation, facility and education support
- e. Other issues related with the assessment

Comments accepted within 30 days from the date of this latter will be considered in the certification assessment. Please include the following details in case we may need to contact for your clarification on any issued raised.

Name : _____
 Address : _____
 Telephone : _____
 Fax : _____

If you wish your comments to be treated confidentiality or remain anonymous, please mark your reply 'CONFIDENTIAL'. Please send your comments to:

Thank you for your comments and feedback.

Yours faithfully,



mutu
international

Irham Budiman

PT MUTUAGUNG LESTARI

Leonada

Operations Manager

Jl. Raya Bogor Km. 33.5 No. 19

Cimanggis, Depok - Indonesia 16953

Telephone: (+62-21) 8740202

Fax: (+62-21) 87740745/46

agri@mutucertification.com

web : www.mutucertification.com

**KOPERASI PRODUSEN BUMI SAWIT
TAMIANG**

Irianto

Ketua Koperasi

Munyang Keramat Street No.21, Dusun Alur Hitam, Serba Village, Bandar Pusaka Sub District, Aceh Tamiang District, Aceh Province, Indonesia, 24478

Telephone: (+62) 812 6591 9236

bumisawittamiang@gmail.com

Director of PT Mutuagung Lestari
