

Date: 03 November 2023

Notification of RSPO Milestone-B of Koperasi Makmur Barokah Belutu (RSPO Membership1-0460-23-000-00, 13 October 2023)

Dear Stakeholders,

Koperasi Makmur Barokah Belutu has applied to Mutuagung Lestari and will conduct audit Milestone-B, located at Belutu Village, Kandis Sub District, Siak District, Riau Province, Indonesia against the requirement of RSPO Independent Smallholder Standard, Indonesia National Interpretation for the Production of Sustainable Palm Oil 2020, endorsed by the RSPO Board of Governors on 14 February 2022.

Koperasi Makmur Barokah Belutu has been registered on PalmTrace IT platform with member ID RSPO_PO1000016243. The organization is a member of RSPO and has been taking an active role in the RSPO certification processes and planned to achieve RSPO Sustainable Palm Oil requirement for all of its production. Mutuagung Lestari has arranged to conduct the assessment to Koperasi Makmur Barokah Belutu on **11 to 13 December 2023**.

Name of Group Manager	Group Manager Address	ISH Group Location	GPS Reference	
			Latitude	Longitude
Asmungi	Belutu Village, Kandis Sub District, Siak District, Riau Province, Indonesia	Belutu Village, Kandis Sub District, Siak District, Riau Province, Indonesia	N 0° 55' 20.7"	E 101° 22' 44.4"

The Makmur Barokah Belutu Cooperative consists of farmers from two villages, namely Belutu and Pancing Bekulo in Kandis sub-district, Siak Regency, Riau Province. Members of the Makmur Barokah Belutu Cooperative are independent farmers who manage their gardens independently.

List of Group Members Koperasi Makmur Barokah Belutu

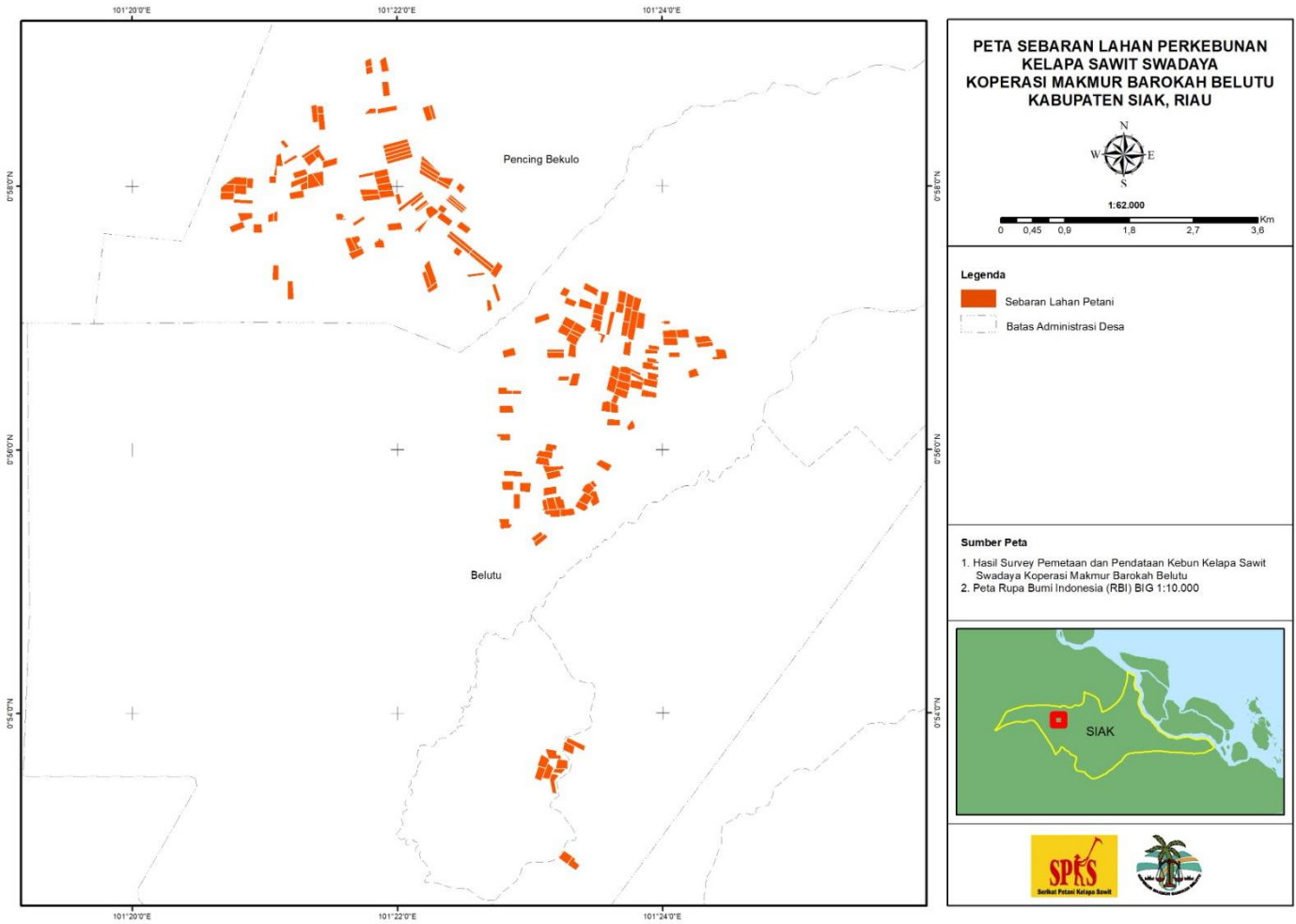
No	Name of Farmer	Location	GPS Reference		Area Summary (Ha)		Forecasted Annual FFB Production (MT)	Any Liabilities? Yes/No	Date of Join on the Group
			Latitude	Longitude	Total Certified Area	Planted Area			
1	Abdul Azis	Belutu Village, Kandis Sub District, Siak District, Riak Province, Indonesia	101° 22' 52.020" E	0° 55' 49.088" N	1.97	1.97	37	No	18 Desember 2023
2	Agnes Febilestari	Belutu Village, Kandis Sub District, Siak District, Riak Province, Indonesia	101° 24' 17.975" E	0° 56' 50.199" N	2.00	2.00	36	No	18 Desember 2023
3	Ahmad Sinaga	Belutu Village, Kandis Sub District, Siak District, Riak Province, Indonesia	101° 23' 6.641" E	0° 55' 57.780" N	2.00	2.00	36	No	18 Desember 2023
4	Arbi Muliadi	Belutu Village, Kandis Sub District, Siak District, Riak Province, Indonesia	101° 22' 49.069" E	0° 56' 18.332" N	2.00	2.00	34	No	18 Desember 2023
5	Asniar Wati	Belutu Village, Kandis Sub District, Siak District, Riak Province, Indonesia	101° 23' 48.383" E	0° 56' 33.197" N	1.00	1.00	20	No	18 Desember 2023
6	Astuti	Belutu Village, Kandis Sub District, Siak District, Riak Province, Indonesia	101° 23' 4.454" E	0° 55' 18.758" N	1.5	1.5	29	No	18 Desember 2023
7	Basiah	Belutu Village, Kandis Sub District, Siak District, Riak Province, Indonesia	101° 23' 41.496" E	0° 57' 9.532" N	1.8	1.8	37	No	18 Desember 2023
8	Boiman	Belutu Village, Kandis Sub District, Siak District, Riak Province, Indonesia	101° 22' 41.355" E	0° 57' 5.727" N	1.00	1.00	19	No	18 Desember 2023
9	Cukup A	Belutu Village, Kandis Sub District, Siak District, Riak Province, Indonesia	101° 23' 9.950" E	0° 55' 51.348" N	2.00	2.00	36	No	18 Desember 2023
10	Cukup B	Belutu Village, Kandis Sub District, Siak District, Riak Province, Indonesia	101° 23' 15.652" E	0° 57' 11.770" N	1.2	1.2	18	No	18 Desember 2023
11	Cukup C	Belutu Village, Kandis Sub District, Siak District, Riak Province, Indonesia	101° 23' 18.063" E	0° 57' 7.158" N	1.46	1.46	20	No	18 Desember 2023
12	Da'mi A	Belutu Village, Kandis Sub District, Siak District, Riak Province, Indonesia	101° 21' 4.726" E	0° 57' 20.606" N	2.00	2.00	36	No	18 Desember 2023
13	Da'mi B	Belutu Village, Kandis Sub District, Siak District, Riak Province, Indonesia	101° 21' 11.333" E	0° 57' 12.585" N	2.12	2.12	38	No	18 Desember 2023
14	Darik	Belutu Village, Kandis Sub District, Siak District, Riak Province, Indonesia	101° 23' 54.683" E	0° 56' 44.565" N	1.06	1.06	16	No	18 Desember 2023
15	Dwi Nurhayati	Belutu Village, Kandis Sub District, Siak District, Riak Province, Indonesia	101° 23' 16.612" E	0° 55' 31.486" N	2.00	2.00	34	No	18 Desember 2023
16	Edi Kesuma	Belutu Village, Kandis Sub District, Siak District, Riak Province, Indonesia	101° 23' 10.330" E	0° 55' 31.074" N	2.00	2.00	35	No	18 Desember 2023
17	Edi Sunarto	Belutu Village, Kandis Sub District, Siak District, Riak Province, Indonesia	101° 23' 5.588" E	0° 55' 54.622" N	1.97	1.97	32	No	18 Desember 2023
18	Erniati	Belutu Village, Kandis Sub District, Siak District, Riak Province, Indonesia	101° 22' 48.278" E	0° 56' 26.569" N	1.67	1.67	32	No	18 Desember 2023
19	Gatot Suroso	Belutu Village, Kandis Sub District, Siak District, Riak Province, Indonesia	101° 23' 40.586" E	0° 57' 4.603" N	1.5	1.5	29	No	18 Desember 2023
20	Giyem	Belutu Village, Kandis Sub District, Siak District, Riak Province, Indonesia	101° 23' 48.019" E	0° 56' 29.600" N	2.00	2.00	35	No	18 Desember 2023
21	Hamzah A	Belutu Village, Kandis Sub District, Siak District, Riak Province, Indonesia	101° 21' 59.056" E	0° 58' 19.319" N	2.00	2.00	35	No	18 Desember 2023
22	Hamzah B	Belutu Village, Kandis Sub District, Siak District, Riak Province, Indonesia	101° 23' 27.420" E	0° 57' 12.993" N	2.08	2.08	36	No	18 Desember 2023
23	Hamzah C	Belutu Village, Kandis Sub District, Siak District, Riak Province, Indonesia	101° 23' 30.414" E	0° 57' 0.397" N	1.04	1.04	19	No	18 Desember 2023
24	Ida Fitri	Belutu Village, Kandis Sub District, Siak District, Riak Province, Indonesia	101° 23' 10.056" E	0° 53' 41.128" N	2.1	2.1	36	No	18 Desember 2023
25	Samini	Belutu Village, Kandis Sub District, Siak District, Riak Province, Indonesia	101° 23' 43.915" E	0° 56' 45.991" N	1.99	1.99	33	No	18 Desember 2023
26	Ihram Syahli	Belutu Village, Kandis Sub District, Siak District, Riak Province, Indonesia	101° 24' 1.591" E	0° 56' 57.877" N	0.53	0.53	10	No	18 Desember 2023
27	Imran	Belutu Village, Kandis Sub District, Siak District, Riak Province, Indonesia	101° 22' 50.369" E	0° 56' 44.092" N	1.97	1.97	32	No	18 Desember 2023
28	Jainal Abidin	Belutu Village, Kandis Sub District, Siak District, Riak Province, Indonesia	101° 22' 57.715" E	0° 55' 42.792" N	2.00	2.00	35	No	18 Desember 2023
29	Joko Suroso	Belutu Village, Kandis Sub District, Siak District, Riak Province, Indonesia	101° 23' 36.896" E	0° 56' 29.575" N	2.5	2.5	50	No	18 Desember 2023
30	Jumakir	Belutu Village, Kandis Sub District, Siak District, Riak Province, Indonesia	101° 23' 3.077" E	0° 55' 20.438" N	1.00	1.00	20	No	18 Desember 2023
31	Kartotiyono A	Belutu Village, Kandis Sub District, Siak District, Riak Province, Indonesia	101° 23' 54.268" E	0° 56' 30.296" N	2.00	2.00	35	No	18 Desember 2023
32	Kartotiyono B	Belutu Village, Kandis Sub District, Siak District, Riak Province, Indonesia	101° 23' 38.290" E	0° 56' 35.254" N	2.00	2.00	36	No	18 Desember 2023
33	Kiwon	Belutu Village, Kandis Sub District, Siak District, Riak Province, Indonesia	101° 23' 5.199" E	0° 56' 59.716" N	2.00	2.00	30	No	18 Desember 2023
34	Mesni	Belutu Village, Kandis Sub District, Siak District, Riak Province, Indonesia	101° 23' 45.553" E	0° 56' 10.718" N	1.09	1.09	17	No	18 Desember 2023
35	M. I. Muhasin	Belutu Village, Kandis Sub District, Siak District, Riak Province, Indonesia	101° 22' 48.228" E	0° 56' 5.759" N	1.6	1.6	35	No	18 Desember 2023
36	Mistok Purba	Belutu Village, Kandis Sub District, Siak District, Riak Province, Indonesia	101° 23' 8.747" E	0° 55' 41.189" N	2.00	2.00	36	No	18 Desember 2023
37	M.Safrizal	Belutu Village, Kandis Sub District, Siak District, Riak Province, Indonesia	101° 23' 55.935" E	0° 56' 46.448" N	1.08	1.08	19	No	18 Desember 2023
38	Nur Sidik	Belutu Village, Kandis Sub District, Siak District, Riak Province, Indonesia	101° 23' 31.062" E	0° 57' 3.863" N	2.03	2.03	37	No	18 Desember 2023
39	Nur Sopa Lubis	Belutu Village, Kandis Sub District, Siak District, Riak Province, Indonesia	101° 23' 19.149" E	0° 56' 50.350" N	2.00	2.00	33	No	18 Desember 2023
40	Olen Sitepu A	Belutu Village, Kandis Sub District, Siak District, Riak Province, Indonesia	101° 23' 10.328" E	0° 53' 28.306" N	2.00	2.00	36	No	18 Desember 2023
41	Olen Sitepu B	Belutu Village, Kandis Sub District, Siak District, Riak Province, Indonesia	101° 23' 4.173" E	0° 53' 32.514" N	2.00	2.00	35	No	18 Desember 2023
42	Paeran	Belutu Village, Kandis Sub District, Siak District, Riak Province, Indonesia	101° 22' 49.719" E	0° 55' 43.692" N	2.00	2.00	36	No	18 Desember 2023
43	Poniman	Belutu Village, Kandis Sub District, Siak District, Riak Province, Indonesia	101° 23' 24.864" E	0° 57' 6.169" N	2.00	2.00	36	No	18 Desember 2023
44	Rahman	Belutu Village, Kandis Sub District, Siak District, Riak Province, Indonesia	101° 23' 9.122" E	0° 56' 0.850" N	1.5	1.5	27	No	18 Desember 2023
45	Rahmawani	Belutu Village, Kandis Sub District, Siak District, Riak Province, Indonesia	101° 22' 53.881" E	0° 56' 25.997" N	0.67	0.67	10	No	18 Desember 2023
46	Rika Anggella Watan	Belutu Village, Kandis Sub District, Siak District, Riak Province, Indonesia	101° 23' 17.327" E	0° 56' 57.724" N	2.00	2.00	35	No	18 Desember 2023
47	Rosmawaty Br. Nasution A	Belutu Village, Kandis Sub District, Siak District, Riak Province, Indonesia	101° 23' 7.949" E	0° 53' 33.209" N	2.00	2.00	36	No	18 Desember 2023
48	Rosmawaty Br. Nasution B	Belutu Village, Kandis Sub District, Siak District, Riak Province, Indonesia	101° 23' 5.797" E	0° 53' 37.807" N	2.00	2.00	37	No	18 Desember 2023

49	Samian	Belutu Village, Kandis Sub District, Siak District, Riak Province, Indonesia	101° 24' 26.022" E	0° 56' 43.198" N	2.27	2.27	39	No	18 Desember 2023
50	Samsuadi	Belutu Village, Kandis Sub District, Siak District, Riak Province, Indonesia	101° 23' 20.460" E	0° 53' 45.835" N	2.00	2.00	37	No	18 Desember 2023
51	Sarino	Belutu Village, Kandis Sub District, Siak District, Riak Province, Indonesia	101° 23' 29.880" E	0° 56' 56.784" N	2.15	2.15	38	No	18 Desember 2023
52	Sarmin A	Belutu Village, Kandis Sub District, Siak District, Riak Province, Indonesia	101° 23' 15.005" E	0° 56' 32.282" N	1.00	1.00	19	No	18 Desember 2023
53	Sarmin B	Belutu Village, Kandis Sub District, Siak District, Riak Province, Indonesia	101° 23' 38.325" E	0° 56' 22.990" N	0.99	0.99	19	No	18 Desember 2023
54	Sela Leli Asri	Belutu Village, Kandis Sub District, Siak District, Riak Province, Indonesia	101° 23' 50.021" E	0° 56' 58.728" N	2.36	2.36	41	No	18 Desember 2023
55	Senang A	Belutu Village, Kandis Sub District, Siak District, Riak Province, Indonesia	101° 23' 11.470" E	0° 56' 42.937" N	2.00	2.00	34	No	18 Desember 2023
56	Senang B	Belutu Village, Kandis Sub District, Siak District, Riak Province, Indonesia	101° 23' 11.382" E	0° 56' 44.943" N	1.00	1.00	20	No	18 Desember 2023
57	Sialip Wibowo	Belutu Village, Kandis Sub District, Siak District, Riak Province, Indonesia	101° 23' 42.076" E	0° 56' 29.193" N	2.00	2.00	37	No	18 Desember 2023
58	Siti Amida Lubis A	Belutu Village, Kandis Sub District, Siak District, Riak Province, Indonesia	101° 23' 15.295" E	0° 56' 54.285" N	1.87	1.87	33	No	18 Desember 2023
59	Siti Amida Lubis B	Belutu Village, Kandis Sub District, Siak District, Riak Province, Indonesia	101° 23' 18.998" E	0° 56' 44.968" N	1.96	1.96	35	No	18 Desember 2023
60	Siti Amida Lubis C	Belutu Village, Kandis Sub District, Siak District, Riak Province, Indonesia	101° 23' 26.046" E	0° 55' 42.197" N	1.7	1.7	35	No	18 Desember 2023
61	Siti Endang Br. Simamora	Belutu Village, Kandis Sub District, Siak District, Riak Province, Indonesia	101° 23' 20.055" E	0° 56' 31.741" N	2.00	2.00	39	No	18 Desember 2023
62	Siti Mariam Lubis	Belutu Village, Kandis Sub District, Siak District, Riak Province, Indonesia	101° 23' 14.233" E	0° 53' 36.680" N	2.02	2.02	37	No	18 Desember 2023
63	Sriani A	Belutu Village, Kandis Sub District, Siak District, Riak Province, Indonesia	101° 23' 6.578" E	0° 55' 34.657" N	1.06	1.06	17	No	18 Desember 2023
64	Sriani B	Belutu Village, Kandis Sub District, Siak District, Riak Province, Indonesia	101° 23' 9.545" E	0° 55' 35.341" N	2.00	2.00	35	No	18 Desember 2023
65	Subakir	Belutu Village, Kandis Sub District, Siak District, Riak Province, Indonesia	101° 23' 15.783" E	0° 52' 54.270" N	2.00	2.00	35	No	18 Desember 2023
66	Sudiono	Belutu Village, Kandis Sub District, Siak District, Riak Province, Indonesia	101° 23' 53.505" E	0° 56' 25.282" N	1.97	1.97	34	No	18 Desember 2023
67	Sukart	Belutu Village, Kandis Sub District, Siak District, Riak Province, Indonesia	101° 23' 53.973" E	0° 56' 37.904" N	2.01	2.01	37	No	18 Desember 2023
68	Sukiyem	Belutu Village, Kandis Sub District, Siak District, Riak Province, Indonesia	101° 23' 23.132" E	0° 55' 34.156" N	1.5	1.5	18	No	18 Desember 2023
69	Sulastr	Belutu Village, Kandis Sub District, Siak District, Riak Province, Indonesia	101° 24' 5.147" E	0° 56' 43.212" N	1.04	1.04	19	No	18 Desember 2023
70	Suliadi A	Belutu Village, Kandis Sub District, Siak District, Riak Province, Indonesia	101° 24' 13.796" E	0° 56' 34.686" N	1.5	1.5	25	No	18 Desember 2023
71	Suliadi B	Belutu Village, Kandis Sub District, Siak District, Riak Province, Indonesia	101° 24' 19.146" E	0° 56' 47.794" N	1.5	1.5	22	No	18 Desember 2023
72	Suliani	Belutu Village, Kandis Sub District, Siak District, Riak Province, Indonesia	101° 23' 32.462" E	0° 56' 51.024" N	0.78	0.78	12	No	18 Desember 2023
73	Suliono	Belutu Village, Kandis Sub District, Siak District, Riak Province, Indonesia	101° 23' 46.324" E	0° 56' 56.582" N	4.00	4.00	79	No	18 Desember 2023
74	Sumaji	Belutu Village, Kandis Sub District, Siak District, Riak Province, Indonesia	101° 23' 33.366" E	0° 55' 52.810" N	2.00	2.00	38	No	18 Desember 2023
75	Sumarni	Belutu Village, Kandis Sub District, Siak District, Riak Province, Indonesia	101° 23' 44.926" E	0° 57' 7.741" N	1.97	1.97	34	No	18 Desember 2023
76	Sunarto	Belutu Village, Kandis Sub District, Siak District, Riak Province, Indonesia	101° 23' 55.181" E	0° 56' 40.514" N	1.00	1.00	21	No	18 Desember 2023
77	Sunyaman A	Belutu Village, Kandis Sub District, Siak District, Riak Province, Indonesia	101° 24' 3.083" E	0° 56' 52.666" N	2.16	2.16	37	No	18 Desember 2023
78	Sunyaman B	Belutu Village, Kandis Sub District, Siak District, Riak Province, Indonesia	101° 24' 9.029" E	0° 56' 52.856" N	2.00	2.00	36	No	18 Desember 2023
79	Suptyok	Belutu Village, Kandis Sub District, Siak District, Riak Province, Indonesia	101° 23' 55.473" E	0° 56' 33.283" N	1.5	1.5	30	No	18 Desember 2023
80	Suparni	Belutu Village, Kandis Sub District, Siak District, Riak Province, Indonesia	101° 21' 5.878" E	0° 58' 10.450" N	2.00	2.00	35	No	18 Desember 2023
81	Suparno	Belutu Village, Kandis Sub District, Siak District, Riak Province, Indonesia	101° 23' 17.184" E	0° 53' 44.102" N	1.9	1.9	34	No	18 Desember 2023
82	Supartik A	Belutu Village, Kandis Sub District, Siak District, Riak Province, Indonesia	101° 23' 38.044" E	0° 56' 18.905" N	1.44	1.44	29	No	18 Desember 2023
83	Supartik B	Belutu Village, Kandis Sub District, Siak District, Riak Province, Indonesia	101° 23' 34.348" E	0° 56' 19.521" N	1.87	1.87	32	No	18 Desember 2023
84	Supriadi	Belutu Village, Kandis Sub District, Siak District, Riak Province, Indonesia	101° 23' 36.250" E	0° 56' 57.825" N	2.00	2.00	39	No	18 Desember 2023
85	Suwandi	Belutu Village, Kandis Sub District, Siak District, Riak Province, Indonesia	101° 24' 3.426" E	0° 56' 49.225" N	2.1	2.1	35	No	18 Desember 2023
86	Suyarti	Belutu Village, Kandis Sub District, Siak District, Riak Province, Indonesia	101° 23' 10.442" E	0° 55' 48.490" N	2.00	2.00	37	No	18 Desember 2023
87	Syamsul	Belutu Village, Kandis Sub District, Siak District, Riak Province, Indonesia	101° 23' 33.392" E	0° 57' 8.954" N	2.00	2.00	37	No	18 Desember 2023
88	Swarno A	Belutu Village, Kandis Sub District, Siak District, Riak Province, Indonesia	101° 23' 42.855" E	0° 56' 55.083" N	1.92	1.92	35	No	18 Desember 2023
89	Swarno B	Belutu Village, Kandis Sub District, Siak District, Riak Province, Indonesia	101° 23' 43.985" E	0° 57' 1.443" N	1.92	1.92	36	No	18 Desember 2023
90	Swarno. S A	Belutu Village, Kandis Sub District, Siak District, Riak Province, Indonesia	101° 23' 21.942" E	0° 56' 55.189" N	2.00	2.00	36	No	18 Desember 2023
91	Swarno. S B	Belutu Village, Kandis Sub District, Siak District, Riak Province, Indonesia	101° 23' 20.663" E	0° 56' 52.783" N	0.88	0.88	14	No	18 Desember 2023
92	Swarno. S C	Belutu Village, Kandis Sub District, Siak District, Riak Province, Indonesia	101° 23' 28.945" E	0° 55' 37.779" N	2.00	2.00	33	No	18 Desember 2023
93	Tugiman	Belutu Village, Kandis Sub District, Siak District, Riak Province, Indonesia	101° 23' 37.639" E	0° 56' 12.323" N	1.6	1.6	33	No	18 Desember 2023
94	Ucok Rahimal	Belutu Village, Kandis Sub District, Siak District, Riak Province, Indonesia	101° 23' 41.126" E	0° 56' 25.810" N	2.00	2.00	35	No	18 Desember 2023
95	Wagrin	Belutu Village, Kandis Sub District, Siak District, Riak Province, Indonesia	101° 23' 13.250" E	0° 55' 35.723" N	2.00	2.00	34	No	18 Desember 2023
96	Walkem A	Belutu Village, Kandis Sub District, Siak District, Riak Province, Indonesia	101° 23' 42.646" E	0° 56' 32.815" N	2.00	2.00	33	No	18 Desember 2023
97	Walkem B	Belutu Village, Kandis Sub District, Siak District, Riak Province, Indonesia	101° 23' 44.517" E	0° 56' 35.838" N	2.00	2.00	34	No	18 Desember 2023
98	Warni	Belutu Village, Kandis Sub District, Siak District, Riak Province, Indonesia	101° 23' 19.408" E	0° 52' 51.223" N	1.59	1.59	26	No	18 Desember 2023
99	Warsono	Belutu Village, Kandis Sub District, Siak District, Riak Province, Indonesia	101° 22' 48.448" E	0° 55' 26.250" N	2.00	2.00	35	No	18 Desember 2023
100	Yaser Lubis	Belutu Village, Kandis Sub District, Siak District, Riak Province, Indonesia	101° 23' 12.786" E	0° 53' 33.693" N	0.94	0.94	21	No	18 Desember 2023
101	Yunus Sumario	Belutu Village, Kandis Sub District, Siak District, Riak Province, Indonesia	101° 23' 48.082" E	0° 57' 6.267" N	2.00	2.00	26	No	18 Desember 2023
102	Zulpandi Alamsyah	Belutu Village, Kandis Sub District, Siak District, Riak Province, Indonesia	101° 23' 24.948" E	0° 55' 37.515" N	1.95	1.95	34	No	18 Desember 2023
103	Ridwan	Belutu Village, Kandis Sub District, Siak District, Riak Province, Indonesia	101° 21' 58.603" E	0° 57' 41.651" N	2.00	2.00	34	No	18 Desember 2023

104	Sidik Budi Pramana	Belutu Village, Kandis Sub District, Siak District, Riak Province, Indonesia	101° 23' 28.517" E	0° 55' 44.284" N	2,00	2,00	36	No	18 Desember 2023
105	Wahyu Rahmat Setiawan	Belutu Village, Kandis Sub District, Siak District, Riak Province, Indonesia	101° 21' 54.638" E	0° 58' 44.345" N	0,53	0,53	9	No	18 Desember 2023
106	Abdi Yakim Daeng	Pencing Bekulo Village, Kandis Sub District, Siak District, Riak Province, Indonesia	101° 21' 2.558" E	0° 57' 45.696" N	1,00	1,00	21	No	18 Desember 2023
107	Ahmad Ali Mursyd Hutabarat	Pencing Bekulo Village, Kandis Sub District, Siak District, Riak Province, Indonesia	101° 21' 53.299" E	0° 58' 2.728" N	1,99	1,99	36	No	18 Desember 2023
108	Alamsyah	Pencing Bekulo Village, Kandis Sub District, Siak District, Riak Province, Indonesia	101° 22' 29.865" E	0° 57' 41.144" N	1,79	1,79	34	No	18 Desember 2023
109	Ali Azhar Daeng	Pencing Bekulo Village, Kandis Sub District, Siak District, Riak Province, Indonesia	101° 21' 4.803" E	0° 57' 46.265" N	0,77	0,77	13	No	18 Desember 2023
110	Anawinta Sahri P/JN	Pencing Bekulo Village, Kandis Sub District, Siak District, Riak Province, Indonesia	101° 22' 27.040" E	0° 57' 30.165" N	1,00	1,00	20	No	18 Desember 2023
111	Arianlo	Pencing Bekulo Village, Kandis Sub District, Siak District, Riak Province, Indonesia	101° 20' 48.797" E	0° 57' 58.555" N	2,2	2,2	37	No	18 Desember 2023
112	Budi Irawan	Pencing Bekulo Village, Kandis Sub District, Siak District, Riak Province, Indonesia	101° 21' 47.159" E	0° 58' 52.844" N	1,00	1,00	20	No	18 Desember 2023
113	Delima Br. Siagian A	Pencing Bekulo Village, Kandis Sub District, Siak District, Riak Province, Indonesia	101° 22' 14.190" E	0° 58' 6.260" N	1,5	1,5	30	No	18 Desember 2023
114	Delima Br. Siagian B	Pencing Bekulo Village, Kandis Sub District, Siak District, Riak Province, Indonesia	101° 22' 13.629" E	0° 58' 4.632" N	1,5	1,5	31	No	18 Desember 2023
115	Edi Dolok Hutabarat A	Pencing Bekulo Village, Kandis Sub District, Siak District, Riak Province, Indonesia	101° 21' 59.985" E	0° 58' 15.886" N	2,00	2,00	33	No	18 Desember 2023
116	Edi Dolok Hutabarat B	Pencing Bekulo Village, Kandis Sub District, Siak District, Riak Province, Indonesia	101° 21' 59.410" E	0° 58' 17.563" N	2,00	2,00	35	No	18 Desember 2023
117	Febri Sulistiono	Pencing Bekulo Village, Kandis Sub District, Siak District, Riak Province, Indonesia	101° 21' 47.021" E	0° 57' 57.403" N	2,00	2,00	36	No	18 Desember 2023
118	Gloria Riahta Simulingga	Pencing Bekulo Village, Kandis Sub District, Siak District, Riak Province, Indonesia	101° 22' 0.395" E	0° 58' 14.173" N	2,00	2,00	35	No	18 Desember 2023
119	Hariadi Lubis	Pencing Bekulo Village, Kandis Sub District, Siak District, Riak Province, Indonesia	101° 21' 24.995" E	0° 58' 34.837" N	1,00	1,00	20	No	18 Desember 2023
120	Hendro Kusmayadi	Pencing Bekulo Village, Kandis Sub District, Siak District, Riak Province, Indonesia	101° 21' 15.300" E	0° 58' 2.065" N	2,00	2,00	35	No	18 Desember 2023
121	Hermin	Pencing Bekulo Village, Kandis Sub District, Siak District, Riak Province, Indonesia	101° 20' 47.765" E	0° 58' 2.399" N	2,7	2,7	52	No	18 Desember 2023
122	Hidayatullahman	Pencing Bekulo Village, Kandis Sub District, Siak District, Riak Province, Indonesia	101° 21' 52.441" E	0° 58' 5.861" N	1,99	1,99	34	No	18 Desember 2023
123	Ila Baini A	Pencing Bekulo Village, Kandis Sub District, Siak District, Riak Province, Indonesia	101° 22' 27.544" E	0° 57' 33.817" N	2,00	2,00	33	No	18 Desember 2023
124	Ila Baini B	Pencing Bekulo Village, Kandis Sub District, Siak District, Riak Province, Indonesia	101° 22' 28.610" E	0° 57' 35.019" N	2,00	2,00	33	No	18 Desember 2023
125	Irma Yulia	Pencing Bekulo Village, Kandis Sub District, Siak District, Riak Province, Indonesia	101° 21' 51.773" E	0° 57' 33.771" N	1,49	1,49	26	No	18 Desember 2023
126	Juniarto	Pencing Bekulo Village, Kandis Sub District, Siak District, Riak Province, Indonesia	101° 21' 33.920" E	0° 57' 45.978" N	1,00	1,00	18	No	18 Desember 2023
127	Junila	Pencing Bekulo Village, Kandis Sub District, Siak District, Riak Province, Indonesia	101° 21' 54.259" E	0° 57' 59.598" N	2,00	2,00	34	No	18 Desember 2023
128	Kasim	Pencing Bekulo Village, Kandis Sub District, Siak District, Riak Province, Indonesia	101° 22' 44.735" E	0° 57' 21.892" N	2,00	2,00	35	No	18 Desember 2023
129	Mai Salamah	Pencing Bekulo Village, Kandis Sub District, Siak District, Riak Province, Indonesia	101° 21' 25.509" E	0° 58' 29.331" N	2,00	2,00	35	No	18 Desember 2023
130	Mariati	Pencing Bekulo Village, Kandis Sub District, Siak District, Riak Province, Indonesia	101° 21' 22.397" E	0° 58' 33.060" N	2,00	2,00	34	No	18 Desember 2023
131	Marsiman	Pencing Bekulo Village, Kandis Sub District, Siak District, Riak Province, Indonesia	101° 21' 41.358" E	0° 57' 29.321" N	2,00	2,00	35	No	18 Desember 2023
132	Marsiah	Pencing Bekulo Village, Kandis Sub District, Siak District, Riak Province, Indonesia	101° 21' 47.883" E	0° 57' 54.807" N	2,00	2,00	32	No	18 Desember 2023
133	Masana Sitepu	Pencing Bekulo Village, Kandis Sub District, Siak District, Riak Province, Indonesia	101° 22' 20.105" E	0° 57' 49.619" N	1,00	1,00	18	No	18 Desember 2023
134	Misran	Pencing Bekulo Village, Kandis Sub District, Siak District, Riak Province, Indonesia	101° 20' 56.625" E	0° 57' 40.718" N	1,5	1,5	29	No	18 Desember 2023
135	Misdi	Pencing Bekulo Village, Kandis Sub District, Siak District, Riak Province, Indonesia	101° 20' 50.879" E	0° 57' 46.339" N	1,98	1,98	35	No	18 Desember 2023
136	Mislan	Pencing Bekulo Village, Kandis Sub District, Siak District, Riak Province, Indonesia	101° 22' 5.703" E	0° 57' 53.029" N	2,00	2,00	36	No	18 Desember 2023
137	Misyanti	Pencing Bekulo Village, Kandis Sub District, Siak District, Riak Province, Indonesia	101° 20' 53.121" E	0° 58' 1.458" N	1,3	1,3	24	No	18 Desember 2023
138	Nasib	Pencing Bekulo Village, Kandis Sub District, Siak District, Riak Province, Indonesia	101° 22' 10.476" E	0° 57' 41.500" N	1,00	1,00	20	No	18 Desember 2023
139	Nisa Kurniawati	Pencing Bekulo Village, Kandis Sub District, Siak District, Riak Province, Indonesia	101° 21' 11.358" E	0° 58' 12.129" N	1,00	1,00	21	No	18 Desember 2023
140	Nurlia Siregar	Pencing Bekulo Village, Kandis Sub District, Siak District, Riak Province, Indonesia	101° 21' 42.341" E	0° 57' 44.189" N	0,9	0,9	21	No	18 Desember 2023
141	Palimah	Pencing Bekulo Village, Kandis Sub District, Siak District, Riak Province, Indonesia	101° 21' 24.304" E	0° 58' 14.242" N	1,51	1,51	31	No	18 Desember 2023
142	Paruntungan Sianturi A	Pencing Bekulo Village, Kandis Sub District, Siak District, Riak Province, Indonesia	101° 22' 14.637" E	0° 58' 8.154" N	2,00	2,00	36	No	18 Desember 2023
143	Paruntungan Sianturi B	Pencing Bekulo Village, Kandis Sub District, Siak District, Riak Province, Indonesia	101° 22' 13.652" E	0° 58' 10.836" N	1,00	1,00	21	No	18 Desember 2023
144	Ponidi	Pencing Bekulo Village, Kandis Sub District, Siak District, Riak Province, Indonesia	101° 21' 20.523" E	0° 58' 15.777" N	1,3	1,3	25	No	18 Desember 2023
145	Raskita Br Ginting	Pencing Bekulo Village, Kandis Sub District, Siak District, Riak Province, Indonesia	101° 22' 21.302" E	0° 57' 44.975" N	2,00	2,00	34	No	18 Desember 2023
146	Rezeki Utami	Pencing Bekulo Village, Kandis Sub District, Siak District, Riak Province, Indonesia	101° 22' 11.352" E	0° 57' 50.415" N	0,5	0,5	10	No	18 Desember 2023
147	Rini Anggraini	Pencing Bekulo Village, Kandis Sub District, Siak District, Riak Province, Indonesia	101° 21' 21.386" E	0° 58' 2.092" N	2,5	2,5	51	No	18 Desember 2023
148	Riswanto	Pencing Bekulo Village, Kandis Sub District, Siak District, Riak Province, Indonesia	101° 20' 49.973" E	0° 57' 53.090" N	1,55	1,55	33	No	18 Desember 2023
149	Ronah Br Aruan	Pencing Bekulo Village, Kandis Sub District, Siak District, Riak Province, Indonesia	101° 20' 43.122" E	0° 57' 59.098" N	2,01	2,01	35	No	18 Desember 2023
150	Sagjok	Pencing Bekulo Village, Kandis Sub District, Siak District, Riak Province, Indonesia	101° 20' 42.794" E	0° 57' 55.668" N	2,00	2,00	30	No	18 Desember 2023
151	Said Dahris	Pencing Bekulo Village, Kandis Sub District, Siak District, Riak Province, Indonesia	101° 22' 8.784" E	0° 57' 53.487" N	1,00	1,00	16	No	18 Desember 2023
152	Said Rizki Ananda	Pencing Bekulo Village, Kandis Sub District, Siak District, Riak Province, Indonesia	101° 21' 54.867" E	0° 57' 56.473" N	2,00	2,00	34	No	18 Desember 2023
153	Salmiah	Pencing Bekulo Village, Kandis Sub District, Siak District, Riak Province, Indonesia	101° 21' 17.674" E	0° 58' 0.070" N	1,00	1,00	20	No	18 Desember 2023
154	Samsul Butar-Butar, S/P	Pencing Bekulo Village, Kandis Sub District, Siak District, Riak Province, Indonesia	101° 22' 0.957" E	0° 58' 12.528" N	2,00	2,00	35	No	18 Desember 2023
155	Sarijok	Pencing Bekulo Village, Kandis Sub District, Siak District, Riak Province, Indonesia	101° 21' 38.570" E	0° 57' 33.391" N	1,92	1,92	32	No	18 Desember 2023
156	Hendri Pratama	Pencing Bekulo Village, Kandis Sub District, Siak District, Riak Province, Indonesia	101° 21' 41.249" E	0° 57' 34.712" N	1,61	1,61	33	No	18 Desember 2023
157	Sri Wahyuni	Pencing Bekulo Village, Kandis Sub District, Siak District, Riak Province, Indonesia	101° 22' 44.605" E	0° 57' 11.468" N	1,33	1,33	27	No	18 Desember 2023
158	Sri Widlaningsih	Pencing Bekulo Village, Kandis Sub District, Siak District, Riak Province, Indonesia	101° 21' 24.616" E	0° 58' 3.921" N	2,00	2,00	35	No	18 Desember 2023

159	Sri Widodo A	Pencing Bekulo Village, Kandis Sub District, Siak District, Riak Province, Indonesia	101° 22' 10.646" E	0° 57' 51.335" N	1,00	1,00	16	No	18 Desember 2023
160	Sri Widodo B	Pencing Bekulo Village, Kandis Sub District, Siak District, Riak Province, Indonesia	101° 22' 53.864" E	0° 55' 36.415" N	2,23	2,23	38	No	18 Desember 2023
161	Sugimo	Pencing Bekulo Village, Kandis Sub District, Siak District, Riak Province, Indonesia	101° 21' 53.913" E	0° 58' 55.220" N	2,00	2,00	36	No	18 Desember 2023
162	Sukemi	Pencing Bekulo Village, Kandis Sub District, Siak District, Riak Province, Indonesia	101° 20' 47.247" E	0° 57' 41.499" N	2,00	2,00	35	No	18 Desember 2023
163	Sunardi A	Pencing Bekulo Village, Kandis Sub District, Siak District, Riak Province, Indonesia	101° 22' 38.599" E	0° 57' 26.808" N	2,00	2,00	35	No	18 Desember 2023
164	Sunardi B	Pencing Bekulo Village, Kandis Sub District, Siak District, Riak Province, Indonesia	101° 22' 37.624" E	0° 57' 25.480" N	2,00	2,00	35	No	18 Desember 2023
165	Suparni	Pencing Bekulo Village, Kandis Sub District, Siak District, Riak Province, Indonesia	101° 22' 35.420" E	0° 57' 19.681" N	1,00	1,00	21	No	18 Desember 2023
166	Supiani	Pencing Bekulo Village, Kandis Sub District, Siak District, Riak Province, Indonesia	101° 21' 3.376" E	0° 58' 3.020" N	1,00	1,00	18	No	18 Desember 2023
167	Suriono	Pencing Bekulo Village, Kandis Sub District, Siak District, Riak Province, Indonesia	101° 22' 13.568" E	0° 58' 33.183" N	2,00	2,00	34	No	18 Desember 2023
168	Suriyadi	Pencing Bekulo Village, Kandis Sub District, Siak District, Riak Province, Indonesia	101° 22' 12.995" E	0° 57' 17.429" N	1,5	1,5	31	No	18 Desember 2023
169	Sutresno	Pencing Bekulo Village, Kandis Sub District, Siak District, Riak Province, Indonesia	101° 22' 15.253" E	0° 57' 48.400" N	2,00	2,00	34	No	18 Desember 2023
170	Tugino A	Pencing Bekulo Village, Kandis Sub District, Siak District, Riak Province, Indonesia	101° 21' 20.352" E	0° 58' 12.373" N	1,89	1,89	34	No	18 Desember 2023
171	Tugino B	Pencing Bekulo Village, Kandis Sub District, Siak District, Riak Province, Indonesia	101° 21' 8.761" E	0° 58' 19.240" N	0,66	0,66	11	No	18 Desember 2023
172	Udin Damanik	Pencing Bekulo Village, Kandis Sub District, Siak District, Riak Province, Indonesia	101° 21' 15.797" E	0° 58' 5.776" N	1,77	1,77	33	No	18 Desember 2023
173	Wagino	Pencing Bekulo Village, Kandis Sub District, Siak District, Riak Province, Indonesia	101° 21' 29.426" E	0° 58' 10.783" N	2,00	2,00	34	No	18 Desember 2023
174	Wagrin. s	Pencing Bekulo Village, Kandis Sub District, Siak District, Riak Province, Indonesia	101° 21' 14.386" E	0° 57' 56.107" N	2,05	2,05	33	No	18 Desember 2023
175	Wagito	Pencing Bekulo Village, Kandis Sub District, Siak District, Riak Province, Indonesia	101° 21' 45.704" E	0° 58' 5.206" N	1,02	1,02	20	No	18 Desember 2023
176	Aminullah	Pencing Bekulo Village, Kandis Sub District, Siak District, Riak Province, Indonesia	101° 21' 46.820" E	0° 58' 56.202" N	1,00	1,00	19	No	18 Desember 2023
177	Suandi Purba	Pencing Bekulo Village, Kandis Sub District, Siak District, Riak Province, Indonesia	101° 22' 21.894" E	0° 58' 2.564" N	1,65	1,65	29	No	18 Desember 2023
178	Nqatiyem	Pencing Bekulo Village, Kandis Sub District, Siak District, Riak Province, Indonesia	101° 22' 20.520" E	0° 58' 0.720" N	1,00	1,00	17	No	18 Desember 2023
179	Sugiono	Pencing Bekulo Village, Kandis Sub District, Siak District, Riak Province, Indonesia	101° 22' 25.796" E	0° 57' 51.122" N	1,00	1,00	14	No	18 Desember 2023
180	Sutrimo	Pencing Bekulo Village, Kandis Sub District, Siak District, Riak Province, Indonesia	101° 22' 26.519" E	0° 57' 52.001" N	1,00	1,00	14	No	18 Desember 2023
181	Nurul Hasni	Pencing Bekulo Village, Kandis Sub District, Siak District, Riak Province, Indonesia	101° 21' 47.943" E	0° 58' 34.174" N	1,00	1,00	19	No	18 Desember 2023
182	Sumarni S	Pencing Bekulo Village, Kandis Sub District, Siak District, Riak Province, Indonesia	101° 22' 28.342" E	0° 57' 59.257" N	1,00	1,00	16	No	18 Desember 2023
183	Tukijan	Pencing Bekulo Village, Kandis Sub District, Siak District, Riak Province, Indonesia	101° 21' 55.236" E	0° 58' 34.976" N	2,00	2,00	37	No	18 Desember 2023
184	Burhan	Pencing Bekulo Village, Kandis Sub District, Siak District, Riak Province, Indonesia	101° 22' 14.748" E	0° 57' 20.208" N	3,00	3,00	59	No	18 Desember 2023
185	Juarni	Pencing Bekulo Village, Kandis Sub District, Siak District, Riak Province, Indonesia	101° 22' 15.866" E	0° 58' 33.784" N	1,00	1,00	17	No	18 Desember 2023
186	Jumiatik	Pencing Bekulo Village, Kandis Sub District, Siak District, Riak Province, Indonesia	101° 22' 0.282" E	0° 57' 54.105" N	1,00	1,00	19	No	18 Desember 2023
187	Minal Amalia	Pencing Bekulo Village, Kandis Sub District, Siak District, Riak Province, Indonesia	101° 22' 15.844" E	0° 57' 13.656" N	1,11	1,11	18	No	18 Desember 2023
188	Halimah	Pencing Bekulo Village, Kandis Sub District, Siak District, Riak Province, Indonesia	101° 22' 27.277" E	0° 57' 52.819" N	1,00	1,00	15	No	18 Desember 2023
TOTAL						315,09	315,09	5,667	

Location maps of the unit certifications area:



Mutuagung Lestari, is also known Mutu Certification International (MUTU), and has started as inspection, laboratory, and Certification body since 1990. As a private national company and supported with highly committed professionals, MUTU has gained recognition nationally and internationally. Since June 2003, MUTU has received recognition from the Ministry of Agriculture, Forestry, and Fishery of Japan (MAFF) as registered overseas certification body (ROCB). MUTU certify and mark products with Japan agriculture standard (JAS) covering Indonesia, Myanmar, Cambodia, Malaysia, Vietnam, Timor Leste, Philippines, Papua New Guinea and China. MUTU is the first ROCB in Asia. National Accreditation Committee has accredited MUTU as Quality Management System certification body (ISO 9001:2015) and Environmental Management System certification body (ISO 14001:2015). Indonesia Ecolabelling Institute (LEI) has also accredited MUTU as Sustainable Forest Management System certification body, Certification Body of Indonesian Sustainable Palm Oil (ISPO), Since March 2014, MUTU has been accredited by ASI (Accreditation Services International) as a RSPO certification body.

The auditor team for the certification assessment will be led of **Rahmat Abdiansyah** and other team auditor from PT Mutuagung Lestari, consist of:

Audit Team	Role/ Area of Requirement	Qualification and Experience
Rahmat Abdiansyah	Best Management Practice and OHS	Indonesian citizen. Bachelor of Forestry from IPB University, with majors in Forest Resources Conservation and Ecotourism. Has experience working in the Indonesian Palm Oil Farmers Organization and Indonesian private oil palm plantation companies. Participate in ISPO and RSPO Internal Auditor training in 2018, ISPO and P&C Certification Systems IHT in 2019, IHT ISO 19011, ISPO Auditor Training in 2020, RSPO Lead Auditor Training in 2020, ISO 14001 and ISO 9001 Lead Auditor Training in 2020, and awareness of the RSPO Certification System and the RSPO P&C in 2019 and 2020.
Rindu Galih Rezza Rachmansyah	Legal, Social, TBP, Transparency and SCCS	Indonesian citizen. Bachelor of Agriculture with major in Plant Pest and Disease. Has one year experience as Field Expert in Pesticide Company and 3 years' experience in Industrial Forest Management, Forest Rehabilitation and Reclamation on Indonesia Stated Owned Company as Assistant. Training which had attended including Lead Auditor ISO 9001, ISO 14001, ISO 17021, ISO 19011, SA 8000, Lead Auditor ISPO, Lead Auditor RSPO, RaCP & NPP Awareness and OHSAS 18001:2007. Has involved in several audit activities related to sustainable palm oil since 2017 in the aspects of Best Management Practices (BMP), social, worker welfare and OHS.
Erika Lucitawati	Environmental, GHG, and Conservation Aspects	Indonesian citizen. Bachelor of Engineering with major in Environmental Engineering. The trainings that have been attended include ISPO Lead Auditor Training, RSPO Lead Auditor Training, Awareness SA8000, In House Training of ISO 19011: 2018, ISO 17021: 2015, ISO 17065: 2012, ISO 9001: 2015, ISO 14001: 2015, ISO 45001: 2018, and The Supervision of Occupational Health and Safety Training.

PT Mutuagung Lestari invites stakeholders to provide comments (if any) on any of the following matters related to the site for assessment:

- Environmental protection within the estate or mill including use of pesticide and waste management.
- Biodiversity within the estate and mill
- Contribution for local development and opportunities for employment
- Provision of housing, sanitation, facility and education support
- Other issues related with the assessment

Comments accepted within 30 days from the date of this letter will be considered in the certification assessment. Please include



PT MUTUAGUNG LESTARI

PUBLIC ANNOUNCEMENT

the following details in case we may need to contact for your clarification on any issued raised.

Name : _____
Address : _____
Telephone : _____
Fax : _____

If you wish your comments to be treated confidentiality or remain anonymous, please mark your reply 'CONFIDENTIAL'. Please send your comments to:

PT MUTUAGUNG LESTARI

Leonada

Operations Manager

Jl. Raya Bogor Km. 33,5 No. 19

Cimanggis, Depok - Indonesia 16953

Telp. (+62-21) 8740202

Fax. (+62-21) 87740745/46

agri@mutucertification.com

web : www.mutucertification.com

Koperasi Makmur Barokah Belutu

Asmungi

Manager ICS

Desa Belutu, Kecamatan Kandis, Kabupaten Siak, Provinsi

Riau

(+62) 813 7892 8731

-

Thank you for your comments and feedback.

Yours faithfully,

Irham Budiman

Director of PT Mutuagung Lestari