

Internal Hotspot Monitoring Weekly Report for 2022

NOV2022_WK03

14 November 2022 – 20 November 2022
Malaysia & Indonesia



Overview



1. P&C 2018 & RSPO ISH Standard 2019 – Related Criteria
2. Weekly Analysis
 - i. Comparison to 2021: All Hotspots in MY & ID
 - ii. Comparison to 2021: Hotspots within RSPO Member Concession
 - iii. Weekly trend from the last 10 weeks
3. Weekly Hotspot Map
 - i. Hotspot Tabulation Map
 - ii. Hotspot Persistency Map
 - iii. Hotspot Distribution by Peatlands and Landuse Map
4. Hotspots for NOV2022_WK03
 - i. RSPO vs. non-RSPO comparison – MY & ID
 - ii. Hotspots Distribution by States/Region - MY & ID
 - iii. Hotspots in RSPO members (State/Province)
5. ASEAN Weather Outlook



RSPO Principles & Criteria 2018

Related Criteria

There is **no use of fire for pest control** unless in exceptional circumstances

7.1.3

Criteria 7.1

The unit of certification **does not use open fire for waste disposal.**

7.3.3

Criteria 7.3

The unit of certification **establishes fire prevention and control measures** for the areas directly managed by the unit of certification

7.11.2

Criteria 7.11



RSPO ISH Standard 2019 - Related Criteria

Smallholders complete training on best management practices (BMPs) for peat. The group has an **action plan to minimise risk of fire**, to apply BMPs for planting on peat and manage water systems in the certification unit.

4.4 MSA

Criteria 4.4

Smallholders **implement** the group's **action plan based on BMPs**, including **fire** and water management, and monitoring of subsidence rate for existing planting on peat.

4.4 MSA

Criteria 4.4

Fire is not used on the oil palm plot **for preparing land** or for **pest control**, nor open fire for **waste management** on the farm.

4.6 E,
4.6 MSA,
4.6 MSB

Criteria 4.6



Weekly Analysis

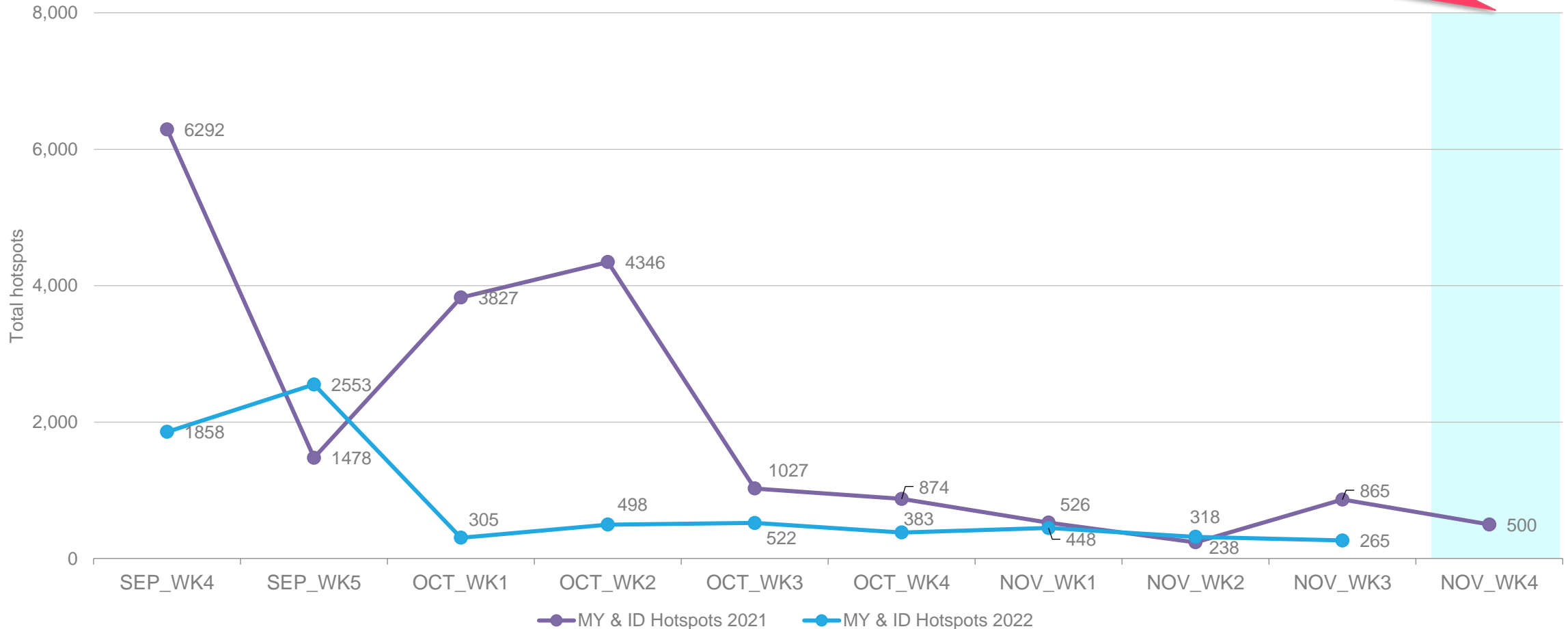
Comparison to 2021 trend
Comparison to previous 10 weeks

14 November 2022 – 20 November 2022

Comparison to 2021: All hotspots



The number of hotspots for next week (Nov 2022: 4th week) is predicted to be **decrease** in the region as compared to 2021 hotspot trend and forecasted

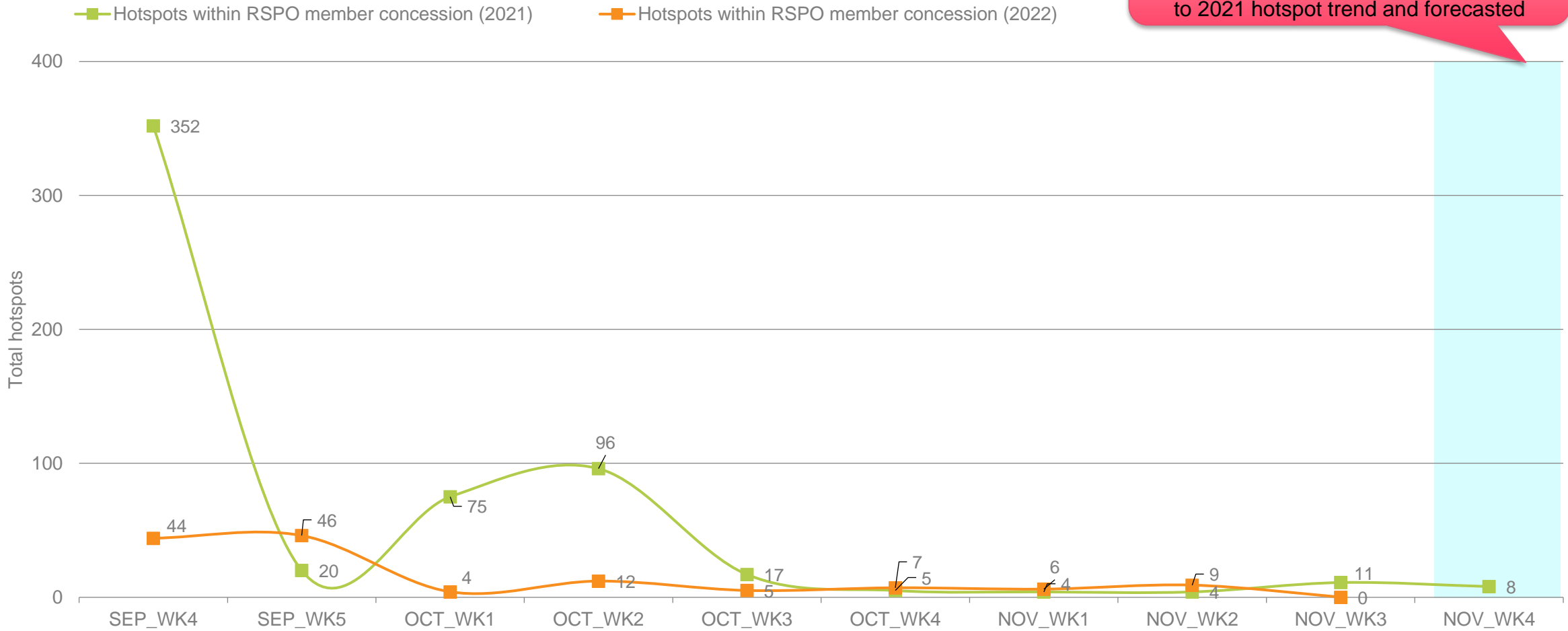


14 November 2022 – 20 November 2022

Comparison to 2021: Hotspot within RSPO Member Concession



The number of hotspots within RSPO member is expected to be **lower** for next week (Nov 2022: 4th week) as compared to 2021 hotspot trend and forecasted

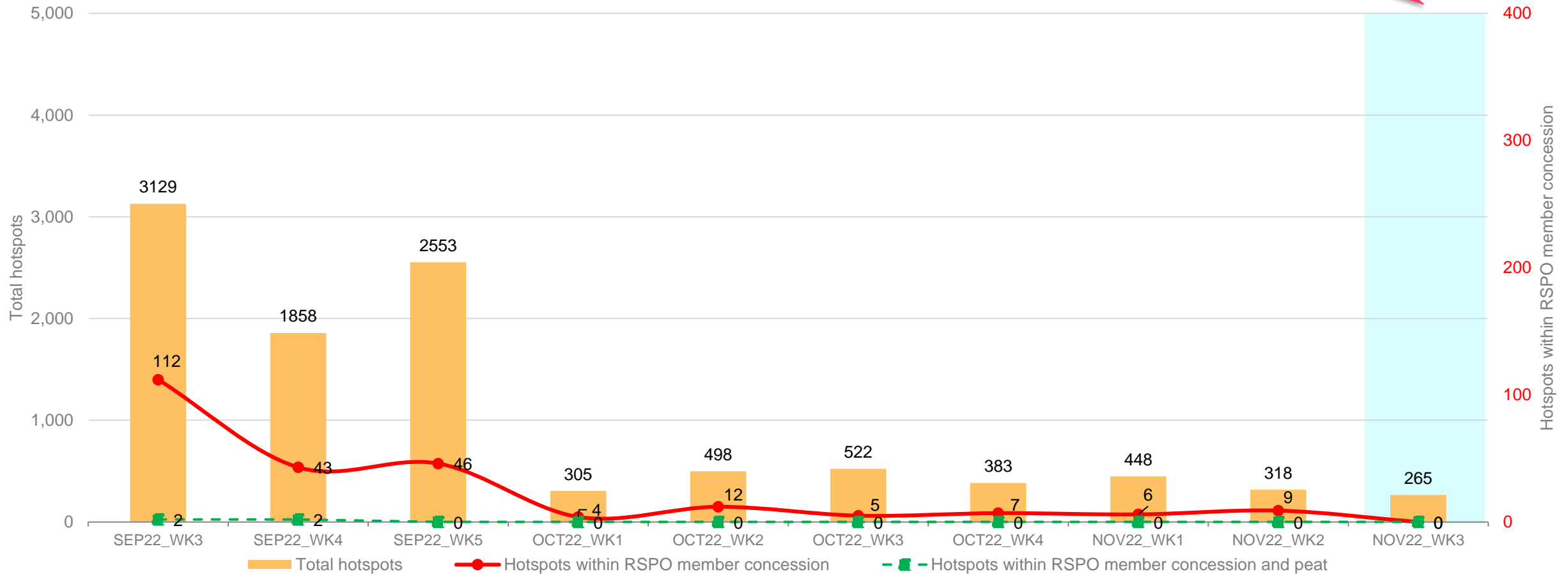


14 November 2022 – 20 November 2022

Weekly trend from last 10 weeks



Slightly lower in hotspot count than previous week



14 November 2022 – 20 November 2022



Weekly Hotspot Map



Malaysia & Indonesia
(Sumatera & Kalimantan) Region

14 November 2022 – 20 November 2022

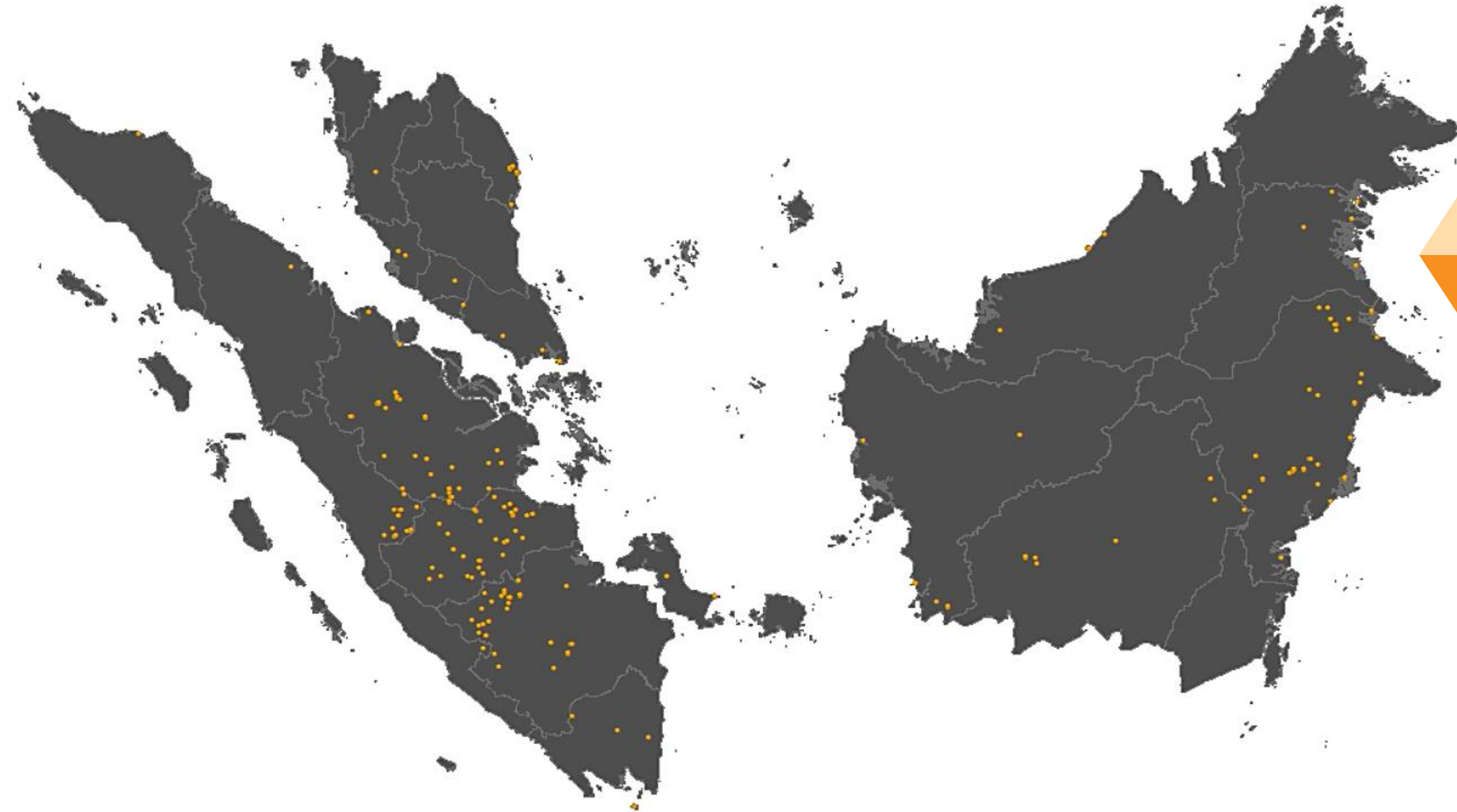


Hotspot Tabulation Map

Legend:

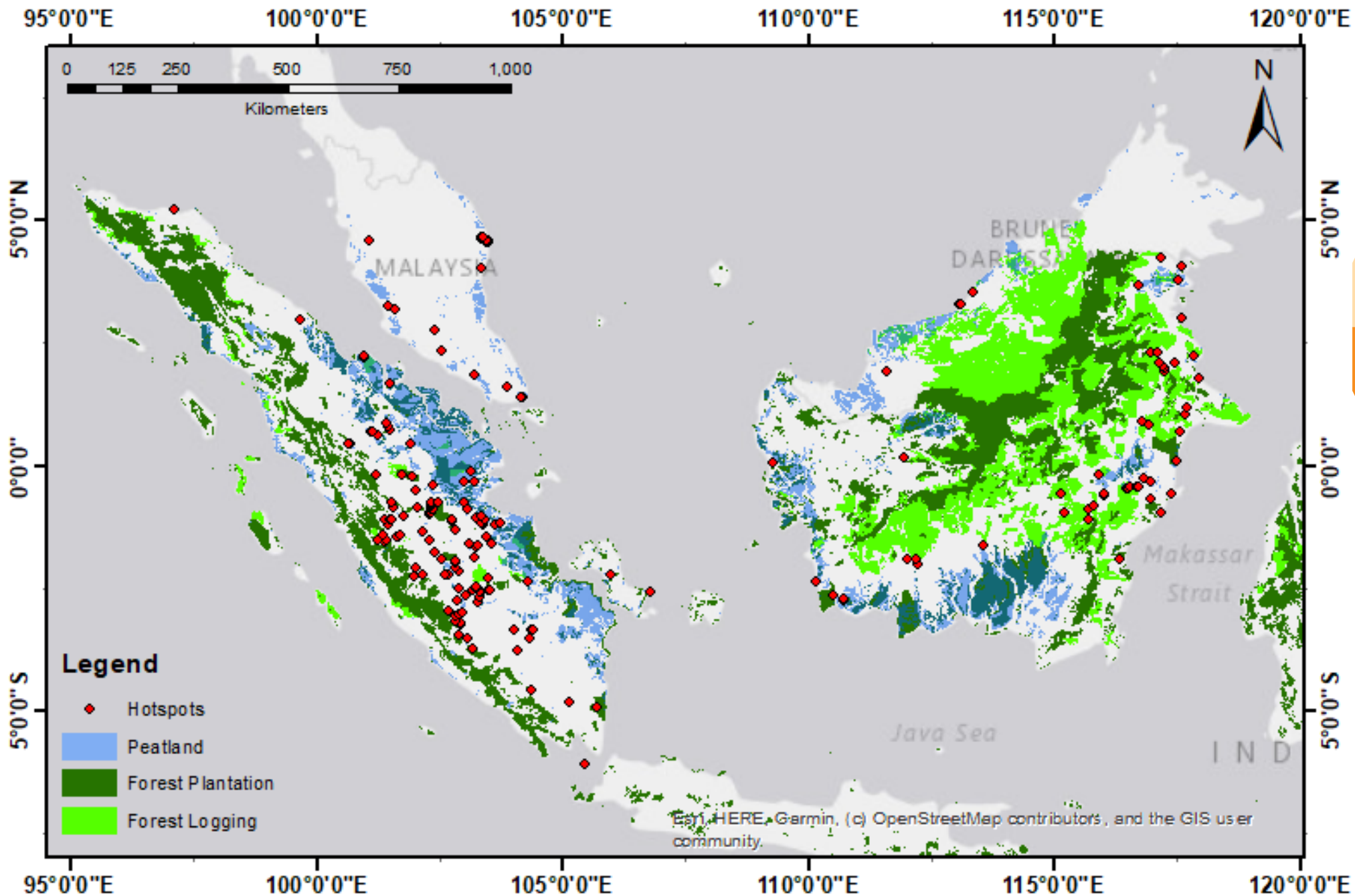
	Hotspot within RSPO member concession
	Hotspot detected by satellite sensor

14 November 2022 – 20 November 2022





Hotspot Distribution by Peatland & Landuse Map

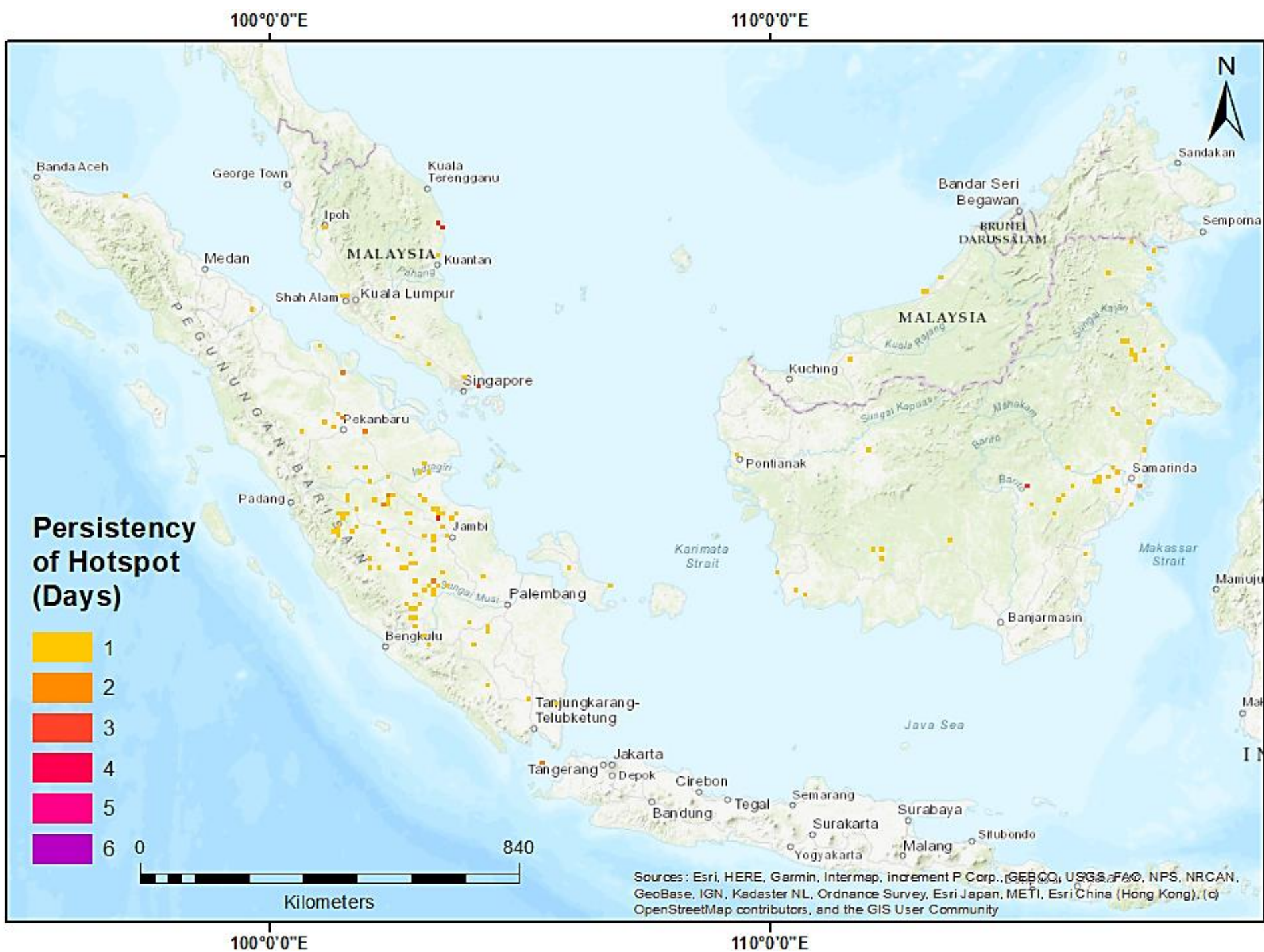


DATA	SOURCE
Hotspots	NASA FIRMS (https://firms.modaps.eosdis.nasa.gov/active_fire)
Peatland	World Resources Institute. "Peat lands". Accessed through Global Forest Watch on 17/11/2022. www.globalforestwatch.org
Forest Plantation	"Wood fiber concessions." Accessed through Global Forest Watch on 17/11/2022. www.globalforestwatch.org .
Forest Logging	"Managed forest concessions." Accessed through Global Forest Watch on 17/11/2022. www.globalforestwatch.org .

14 November 2022 – 20 November 2022



Hotspot Persistency Map



Each grid represents the number of days hotspots were detected within the 10km X 10km grid between 14 November 2022 – 20 November 2022

14 November 2022 – 20 November 2022

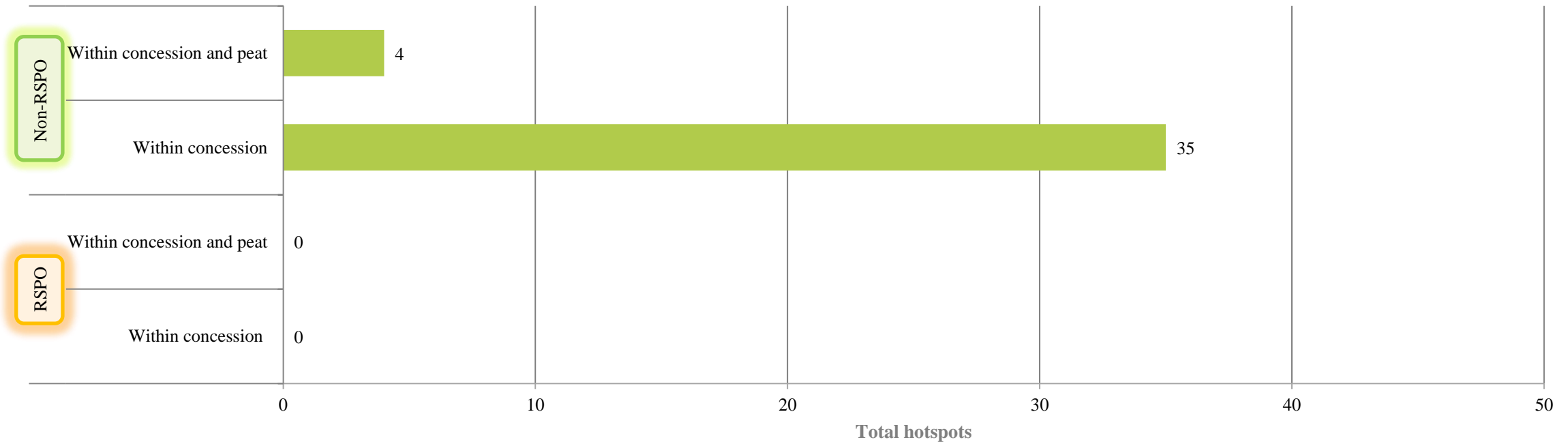


NOV2022_WK03 Hotspot

**Malaysia & Indonesia
(Sumatera & Kalimantan) Region**

14 November 2022 – 20 November 2022

RSPO vs non-RSPO comparison



Non-RSPO oil palm concession location data was derived from oil palm concessions dataset accessed through Global Forest Watch on 17/11/2022. www.globalforestwatch.org. The website states that this layer is a compilation of concession data from various countries and sources. The quality of these data can vary depending on the source. This layer may not include all existing concessions in a country, and the location of certain concessions can be inaccurate.

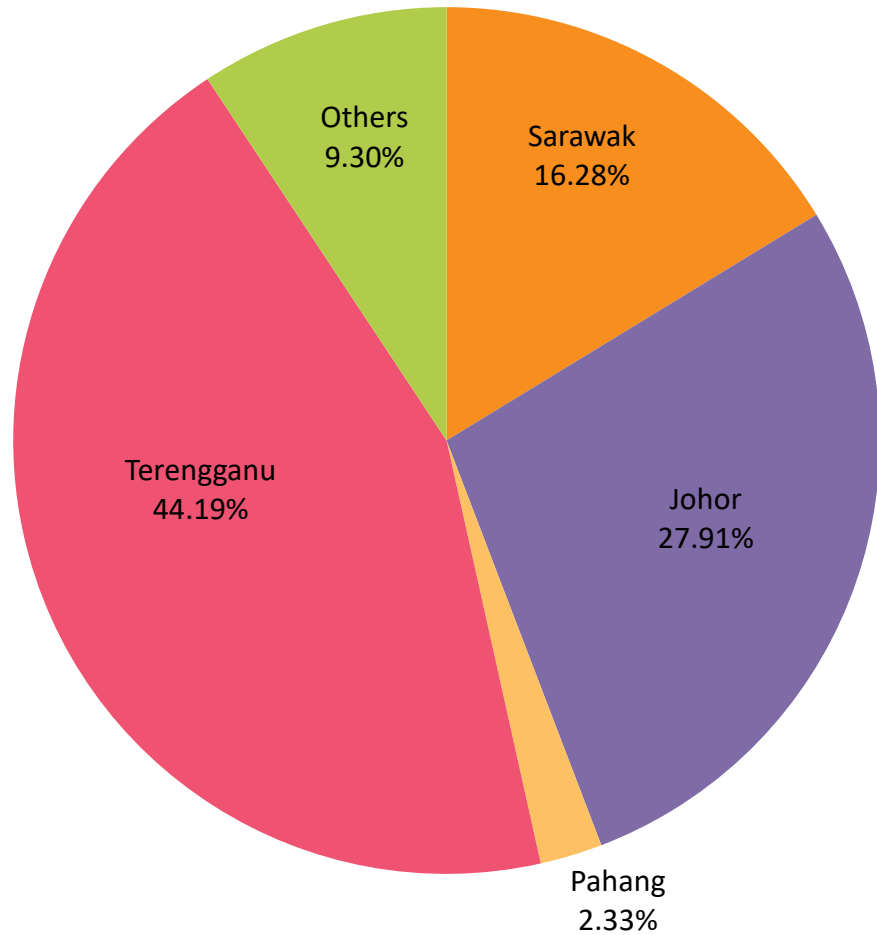
As such the data probably overstates the extent of oil palm plantations in some cases, as there are many licenses granted and the oil palm plantation has not been developed. In other cases, it may understate the extent of plantations as it does not take into account smallholders. Nevertheless, this appears to be the best data available of ALL oil palm in Indonesia.

The RSPO concession boundary data was overlaid with this data in the GIS and RSPO concessions were “clipped” out of this data, leaving only “non-RSPO” concessions.

Non-RSPO*: ~19,000,000 ha

RSPO: ~ 4,500,000 ha

Distribution of Hotspots by State in Malaysia

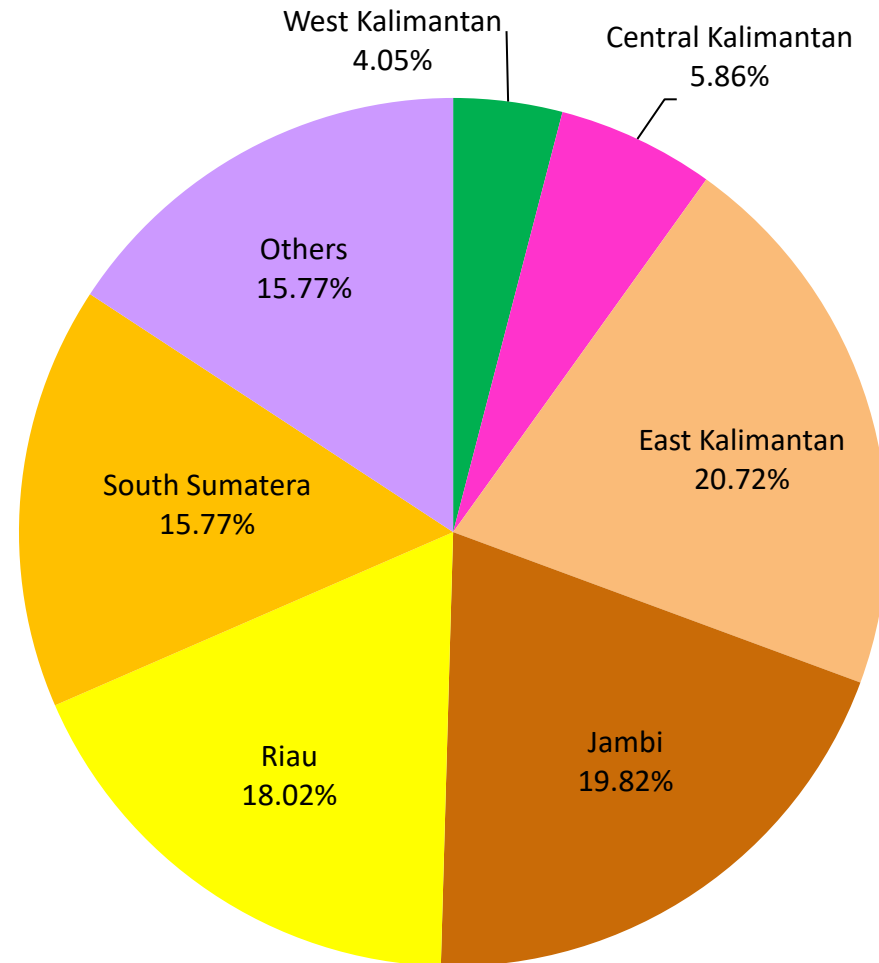


STATE	TOTAL
Sabah	0
Sarawak	7
Johor	12
Pahang	1
Terengganu	19
Others	4
Total	43



Distribution of Hotspots by Region in Indonesia

REGION	TOTAL
West Kalimantan	9
Central Kalimantan	13
South Kalimantan	0
East Kalimantan	46
Jambi	44
Riau	40
South Sumatera	35
Others	35
Total	222





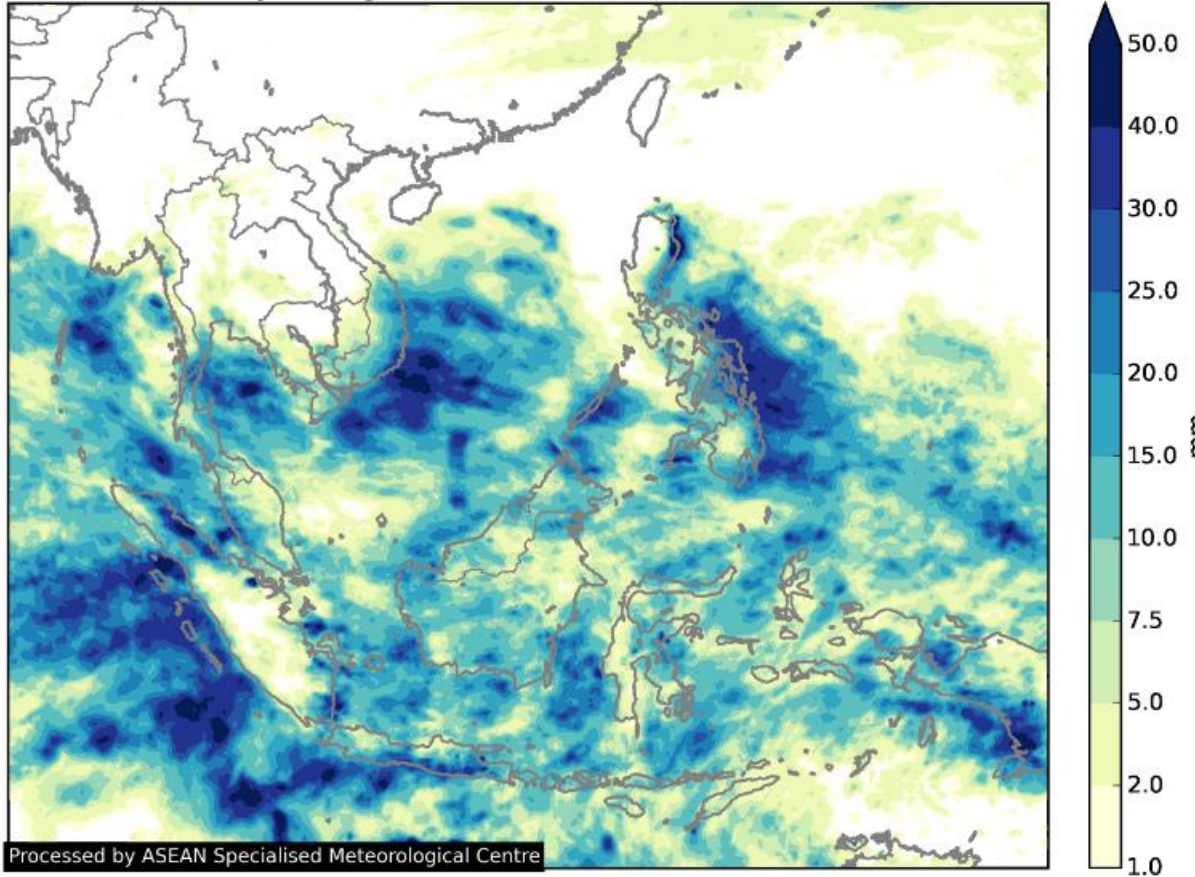
ASEAN Weather Outlook

Source: The ASEAN Specialised Meteorological Centre

14 November 2022 – 20 November 2022

Regional Weather & Haze Outlook

GsMaP Daily Average Rainfall from 2022-11-14 to 2022-11-20



Processed by ASEAN Specialised Meteorological Centre

Alert Level

- **LEVEL 0** Stay vigilant.
- **LEVEL 1** Dry season for the Southern ASEAN region.
- **LEVEL 2** Exceeding 150 hotspots in 2 consecutive days in Northern ASEAN with dense smoke plumes; dry weather persisting; and prevailing winds blowing from the Mekong sub-region. Increasing risk of transboundary haze in the region.
- **LEVEL 3** Significant and persistent hotspot activities with widespread moderate to dense smoke haze observed over 2 or more consecutive days; dry weather persisting; and prevailing winds blowing towards ASEAN countries.

In the past week, there have been widespread showers over most parts of the southern ASEAN region which has helped to subdue the overall hotspot activity in the region and no significant smoke haze was observed from satellite imagery.

As the prevailing wet weather is forecast to persist over the southern ASEAN region in the coming days, the hotspot activity is expected to remain subdued

Showers activities and cloudy conditions prevailed over most of the ASEAN region except for the northern and central parts of Mekong sub-region, where weather conditions were drier.

For the next few days, the monsoon rain band located close to the Equator is likely to continue to bring wet weather and relatively strong winds over most of the ASEAN region. While the overall hotspot activity in the region is expected to remain low, isolated hotspots can still occur over the fire-prone areas experiencing prolonged dry weather.

Alert for RSPO members:

For the following week, RSPO Secretariat would like to recommend the following measures to Members:

- High risk of surface runoff in the estate area which may result in erosion and landslide
- Stay vigilant of water level and keep informed on local news of the flood in high-risk area
- Tendency for the formation of road potholes, which may necessitate additional maintenance and repair costs.
- Stay inside during thunderstorms and blizzards. Stay off the landline phone and computer during a storm.
- Wear appropriate rain gear for employees working in the rain



Integrated Fire Management Training conducted by PT Austindo PT Austindo Nusantara Jaya Agri



Fire Danger Rating System (FDRS) indicator board



Fire extinguishing activities by Savonnerie Tropicale S.A



Find out more at
www.rspo.org