

RSPO NOTIFICATION OF PROPOSED NEW PLANTING

This verification was conducted as a desk top exercise at the auditor's office in the United Kingdom over the period of 21st to 25th July 2014. The assessment and plan are comprehensive, professional and compliant of RSPO principles, criteria and indicators.

This notification shall be on the RSPO website for 30 days as required by the RSPO procedures for new plantings (<http://www.rspo.org/?q=page/535>).

Date of notification:	28th July 2014
------------------------------	----------------------------------

Yes <input checked="" type="checkbox"/> No <input type="checkbox"/>	This is a completely new development and stakeholders may submit comments.
Yes <input type="checkbox"/> No <input checked="" type="checkbox"/>	This is part of an on-going planting and is meant for notification only.

Company and contact details:	
Company Name:	Archer Daniels Midland do Brasil
Address:	Rod. Pará, 127, Bairro Novo. São Domingos do Capim. PA. ZIP CODE – 68635-000
Type of business:	Growing of oil palm and the production of palm oil.
Contact person:	Rodrigo Curvo
Email address:	Rodrigo.Curvo@adm.com
Phone number:	91-34371610 e 11-51853500
RSPO Membership No:	2-0060-07-000-00

Contents.

1. Documents studied for this report.
2. Subsidiaries of the above company included in this notification.
3. Summary of the new planting area and status of the land.
4. Legal and reference documents.
5. Area statements.
 - 5.1 Planting years.
6. Location of the land.
 - 6.1 Location map of the project area.
7. Summary of the HCV and SEIA report.
 - 7.1 Stages in the SEIA.
 - 7.2 Summary of the social and environmental impacts.
 - 7.3 Summary of the soil, water and vegetation surveys.
 - 7.4 Summary of the soil, water and vegetation surveys.
8. Summary of the management plans.
9. Verification statement.
10. Formal signing.

1. Documents studied for this report.

- Summary Report Management Rev 3.
- Summary Report SEIA-HCV Rev 3.
- Appendix Summary Report SEIA-HCV Rev 3.

These documents, plus the full versions are available for review upon reasonable request to ADM Brazil.

2. Subsidiaries of the above company included in this notification:

There are no subsidiary companies.

Archer Daniels Midland – Brazil (ADM) enters into Business Partnerships by way of contracts with landowners and smallholders. The company has 18 Business Partnerships and 466 Smallholder Partnerships.

3. Summary of the new planting area and status of the land.

It is noted that 7,448.29 hectares of the plantable area of 10,070.52 hectares was planted between 2012 and 2014. (See tables 5 and 5.1 for a summary).

The project is located in the North East of Pará, Brazil and covers areas in the municipalities of São Miguel do Guama, São Domingos do Capim, Iritula, Mão do Rio, Aurora do Pará, Concórdia do Pará, Santa Maria do Pará and Capitão Poço. This part of Pará has a history of land management dating back over 150 years. During this time, the original primary forest has been progressively converted into agricultural land – mainly for cattle grazing. Few fragments of the primary forest remain and are now located principally in riparian zones. The planting plans in 2012 included the planting of some 7,600 hectares. 5,600 hectares would be in Business Partnerships and 2,000 hectares in partnership with smallholders.

At no time does ADM take ownership of the land, and partnerships are only entered into with properties that have documents guaranteeing the legality of land ownership within the National Brazilian criteria. The existence of property deeds, proof of purchase and sale, and the suitability statement of PRONAF (DAP) are verified. When there are no property deeds, the statement of peaceful ownership (DPMP) is obtained. The DPMP contains a statement from the smallholder that lives and works on his/her property, and the consent of three neighbours of the property stating that there are no conflicts of legal, customary or user rights. All three parties sign this document. In addition, funders (banks) of productions of smallholders also inspect land ownership.

Business Partnerships.

ADM enters into a contract with landowners who make the land available for ADM to develop as oil palm in return for a financial payment. ADM then undertakes all activities required prior to planting such as Social Environmental Impact Assessments, carries out land preparation, planting and all activities associated with best agricultural practice.

Smallholder Partnerships.

ADM entered into a partnership with smallholders by way of a contract whereby the smallholder produce Fresh Fruit Bunches (FFBs) exclusively for ADM. Financial backing for the smallholder is given by PRONAF Eco Palm and the contracts are supported by Rural Unions and validated by producer associations. PRONAF Eco Palm is a line of credit specific to palm oil and family producers, designed by the Brazilian Federal Government.

The smallholder carries out the planting, maintenance and harvesting of FFB with technical and agronomy support and recommendations from ADM, who guarantee to purchase the entire FFB crop.

RSPO compliance of the supply base.

By providing a structured technical support to the smallholders and by managing the land contracted under the business partnership, ADM has the necessary structure to ensure the management of the oil palm supply base in accordance with the RSPO P&C 2013.

4. Legal and reference documents.

- Brazil, 1973. Established regulatory measures for rural labor. Federal Law No. 5.889, June 8, 1973.
- Brazil, 2006. Establishes guidelines for the formulation of the National Policy for Family Agriculture and Rural Family Production. Law Nº. 11.326, July 24, 2006.
- Brazil, 2011. Ministry of Labor. NR- 31: Safety and health in agricultural labor, livestock farming, forestry, silviculture and aquaculture. Ordinance Nº. 86, March 3, 2005. Revised with Ordinance MTE Nº. 2.546, December 14, 2011.
- Brazil, Forestry Code 12.651, most recent update: Law No. 12.727, October 17, 2012.
- Brazil, 2011. Instituted the Program to Support Environmental Conservation and the Program to Promote Rural Production. Law Nº. 12.512, October 14, 2011.
- Brazil, National Council on the Environment (Conselho Nacional de Meio Ambiente - CONAMA) Resolution Nº. 357, March 17, 2005.

IBD

CERTIFICATIONS

- Brazil, National Council on the Environment (CONAMA). Resolution Nº. 398, April 3, 2008.
- Brazil. National Council on the Health. Ordinance Nº. 518, March 25, 2004.
- State Government of Pará. 2007. Ecological-Economic Macro-zoning in the state of Pará. Secretary of Science, Technology and Environmental Executive.
- Brazilian Agricultural Research Corporation (Embrapa). 2010. Agro-ecological zoning for palm oil in deforested areas of the legal Amazon- ZAE-Dendê.
- State Government of Pará. 2005. State Law No. 6745, May 6, 2005.
- Ministry of Agrarian Development (MDA). 2010. Program for Sustainable Palm Oil Production in Brazil.
- Ministry of the Environment (MMA). 2008. List of Endangered Brazilian Fauna. Normative Instruction No. 03/2003, Federal Official Gazette Nº. 101, Section 1, pgs. 88-97, May 28, 2003.
- Secretary of State and the Environment (SEMA). 2007. List of Threatened Flora and Fauna Species of the state of Pará. Available at: <http://www.sema.pa.gov.br>.

Business Partnership Properties.

- Definitive proof of ownership, or
- DPMP (declaration of peaceful ownership).
- Rural Environmental Registry (Cadastro Ambiental Rural – CAR)
- Planting Authorization from SEMA/PA (AFAR)
- Proof of Payment of Rural Land Tax.
- Rural Environmental License (AFAR, and Licença Ambiental Rural - LAR).
- Partnership contract between ADM and landowner.
- Environmental Commitment Term (ECT).

Smallholders Properties.

- Definitive proof of ownership, or
- DPMP (declaration of peaceful ownership).
- Statement of PRONAF acquirement (DAP).
- Rural Environmental Registry (Cadastro Ambiental Rural – CAR)
- Surveillance report on PRONAF Eco Dendê.
- Environmental Commitment Term (ECT).
- Rural Environmental License (AFAR, and Licença Ambiental Rural - LAR).
- Purchase/sale contract to support the Implementation of palm oil and exclusive supply of Fresh Fruit Bunches originating from smallholders.
- PRONAF Bank Credit.

5. Area statements. TOTAL PLANTED AREAS			
	Partnerships (18)	Smallholders	TOTAL:
Gross area:	12,817.21 ha.	15,267.00 ha	28,084.21 ha
Suitable for oil palm	8,040.62 ha	2,029.90 ha	10,070.52 ha
Planted area:	5,418.39 ha.	2,029.90 ha	7,448.29 ha
Contracted area:	6,305.30 ha.	2,029.90 ha	8.335,20 ha
Gross area: total area of partnerships farms + smallholders Suitable for palm oil: areas of use indicated by Rural Environmental Registry. These areas exclude secondary and primary forest, Legal Reserves, Permanent Preservation Areas (riparian areas) and HCV areas. Contracted area: Land negotiated with land proprietors in business partnerships.			

5.1 Planting timetable.				
	2012	2013	2014	Not scheduled
Business partnerships:	905,42 ha.	2,017.0 ha.	2,495,97 ha.	2622 ha.
Smallholders:	1,102.00 ha.	927.9 ha.	-	-

1. Documents studied for this report.

- Summary Report Management Rev 3.
- Summary Report SEIA-HCV Rev 3.
- Appendix Summary Report SEIA-HCV Rev 3.

These documents, plus the full versions are available for review upon reasonable request to ADM Brazil.

2. Subsidiaries of the above company included in this notification:

There are no subsidiary companies.

Archer Daniels Midland – Brazil (ADM) enters into Business Partnerships by way of contracts with landowners and smallholders. The company has 18 Business Partnerships and 466 Smallholder Partnerships.

3. Summary of the new planting area and status of the land.

It is noted that 7.448,29 hectares of the plantable area of 10.070,59 hectares was planted between 2012 and 2014. (See tables 5 and 5.1 for a summary).

The project is located in the North East of Pará, Brazil and covers areas in the municipalities of São Miguel do Guama, São Domingos do Capim, Irituia, Mão do Rio, Aurora do Pará, Concórdia do Pará, Santa Maria do Pará and Capitão Poço. This part of Pará has a history of land management dating back over 150 years. During this time, the original primary forest has been progressively converted into agricultural land – mainly for cattle grazing. Few fragments of the primary forest remain and are now located principally in riparian zones. The new planting plans include the planting of some 7,600 hectares. 5,600 hectares will be in Business Partnerships and 2,000 hectares in partnership with smallholders.

At no time does ADM take ownership of the land, and partnerships are only entered into with properties that have documents guaranteeing the legality of land ownership within the National Brazilian criteria. The existence of property deeds, proof of purchase and sale, and the suitability statement of PRONAF (DAP) are verified. When there are no property deeds, the statement of peaceful ownership (DPMP) is obtained. The DPMP contains a statement from the smallholder that lives and works on his/her property, and the consent of three neighbours of the property stating that there are no conflicts of legal, customary or user rights. All three parties sign this document. In addition, funders (banks) of productions of smallholders also inspect land ownership.

Business Partnerships.

ADM enters into a contract with landowners who make the land available for ADM to develop as oil palm in return for a financial payment. ADM then undertakes all activities required prior to planting such as Social Environmental Impact Assessments, carries out land preparation, planting and all activities associated with best agricultural practice.

Smallholder Partnerships.

ADM entered into a partnership with smallholders by way of a contract whereby the smallholder produce Fresh Fruit Bunches (FFBs) exclusively for ADM. Financial backing for the smallholder is given by *PRONAF Eco Palm* and the contracts are supported by Rural Unions and validated by producer associations. *PRONAF Eco Palm* is a line of credit specific to palm oil and family producers, designed by the Brazilian Federal Government.

The smallholder carries out the planting, maintenance and harvesting of FFB with technical and agronomy support and recommendations from ADM, who guarantee to purchase the entire FFB crop.

RSPO compliance of the supply base.

By providing a structured technical support to the smallholders and by managing the land contracted under the business partnership, ADM has the necessary structure to ensure the management of the oil palm supply base in accordance with the RSPO P&C 2013.

4. Legal and reference documents.

- Brazil, 1973. Established regulatory measures for rural labor. Federal Law No. 5.889, June 8, 1973.
- Brazil, 2006. Establishes guidelines for the formulation of the National Policy for Family Agriculture and Rural Family Production. Law Nº. 11.326, July 24, 2006.
- Brazil, 2011. Ministry of Labor. NR- 31: Safety and health in agricultural labor, livestock farming, forestry, silviculture and aquaculture. Ordinance Nº. 86, March 3, 2005. Revised with Ordinance MTE Nº. 2.546, December 14, 2011.
- Brazil, Forestry Code 12.651, most recent update: Law No. 12.727, October 17, 2012.
- Brazil, 2011. Instituted the Program to Support Environmental Conservation and the Program to Promote Rural Production. Law Nº. 12.512, October 14, 2011.
- Brazil, National Council on the Environment (Conselho Nacional de Meio Ambiente - CONAMA) Resolution Nº. 357, March 17, 2005.

IBD

CERTIFICATIONS

- Brazil, National Council on the Environment (CONAMA). Resolution Nº. 398, April 3, 2008.
- Brazil. National Council on the Health. Ordinance Nº. 518, March 25, 2004.
- State Government of Pará. 2007. Ecological-Economic Macro-zoning in the state of Pará. Secretary of Science, Technology and Environmental Executive.
- Brazilian Agricultural Research Corporation (Embrapa). 2010. Agro-ecological zoning for palm oil in deforested areas of the legal Amazon- ZAE-Dendê.
- State Government of Pará. 2005. State Law No. 6745, May 6, 2005.
- Ministry of Agrarian Development (MDA). 2010. Program for Sustainable Palm Oil Production in Brazil.
- Ministry of the Environment (MMA). 2008. List of Endangered Brazilian Fauna. Normative Instruction No. 03/2003, Federal Official Gazette Nº. 101, Section 1, pgs. 88-97, May 28, 2003.
- Secretary of State and the Environment (SEMA). 2007. List of Threatened Flora and Fauna Species of the state of Pará. Available at: <http://www.sema.pa.gov.br>.

Business Partnership Properties.

- Definitive proof of ownership, or
- DPMP (declaration of peaceful ownership).
- Rural Environmental Registry (Cadastro Ambiental Rural – CAR)
- Planting Authorization from SEMA/PA (AFAR)
- Proof of Payment of Rural Land Tax.
- Rural Environmental License (AFAR, and Licença Ambiental Rural - LAR).
- Partnership contract between ADM and landowner.
- Environmental Commitment Term (ECT).

Smallholders Properties.

- Definitive proof of ownership, or
- DPMP (declaration of peaceful ownership).
- Statement of PRONAF acquirement (DAP).
- Rural Environmental Registry (Cadastro Ambiental Rural – CAR)
- Surveillance report on PRONAF Eco Dendê.
- Environmental Commitment Term (ECT).
- Rural Environmental License (AFAR, and Licença Ambiental Rural - LAR).
- Purchase/sale contract to support the Implementation of palm oil and exclusive supply of Fresh Fruit Bunches originating from smallholders.
- PRONAF Bank Credit.

5. Area statements. TOTAL PLANTED AREAS

	Partnerships (18)	Smallholders	TOTAL:
Gross area:	12,817.21 Ha.	2,030.20 ha	14,847.41 ha
Suitable for oil palm	8,040.39 Ha	2,030,20 ha	10,070.59 ha
Planted area:	5,418.39 Ha.	2,029.9ha	7,448.29 ha
Contracted area:	6,305.3 Ha.	2,029.9 ha	8.335,20 ha
Gross area: total area of partnerships farms + smallholders			
Suitable for oil palm: Total area excluding the areas of secondary forest, permanent preservation areas and HCV.			
Contracted area: Land negotiated with land proprietors in business partnerships.			

5.1 Planting timetable.

	2012	2013	2014	Not scheduled
Business partnerships:	905,42 ha.	2,017.0 ha.	2,495,97 ha.	2622 ha.
Smallholders:	1,102.00 ha.	927.9 ha.	-	-

Summary of HCV Category and Hectarage

Table showing the areas of HCV values for present or potential presence in business partnerships properties.

Farm	HCV	Description	Area (ha)
Abadia	4	Riparian vegetation areas and steep slopes alongside water bodies	50,08
	1	Fragments with potential presence of endangered, rare or endemic species	25,53
Abaré	4	Riparian vegetation areas and steep slopes alongside water bodies	27,90
	1	Fragments with potential presence of endangered, rare or endemic species	15,46
Águia	4	Riparian vegetation areas and steep slopes alongside water bodies	34,29
Alegria I	1	Fragments with potential presence of endangered, rare or endemic species	19,59
	4	Riparian vegetation areas and steep slopes alongside water bodies	13,70
Alegria II	1	Fragments with potential presence of endangered, rare or endemic species	82,87
	4	Riparian vegetation areas and steep slopes alongside water bodies	57,45
Arauaí	1	Flood plain vegetation and wetlands	45,18
	4	Riparian vegetation areas and steep slopes alongside water bodies	133,45
	1	Fragments with potential presence of endangered, rare or endemic species	270,07
Ariramba	1	Fragments with potential presence of endangered, rare or endemic species	24,22
	4	Riparian vegetation areas and steep slopes alongside water bodies	88,58
Diamantina II	4	Riparian vegetation areas and steep slopes alongside water bodies	15,52
Diamantina IV	4	Riparian vegetation areas and steep slopes alongside water bodies	1,62
Eldorado I	4	Riparian vegetation areas and steep slopes alongside water bodies	71,37
Eldorado I	1	Fragments with potential presence of endangered, rare or endemic species	72,95
Eldorado II	4	Riparian vegetation areas and steep slopes alongside water bodies	2,23
Eldorado III	4	Riparian vegetation areas and steep slopes alongside water bodies	2,49
Ititula	4	Riparian vegetation areas and steep slopes alongside water bodies	1,86
	1	Fragments with potential presence of endangered, rare or endemic species	123,00
Paraíso do Noi	1	Fragments with potential presence of endangered, rare or endemic species	486,17
	4	Riparian vegetation areas and steep slopes alongside water	142,23

Continuation of table above.

Farm	HCV	Description	Area (ha)
		bodies	
Quara	1	Fragments with potential presence of endangered, rare or endemic species	51,70
	4	Riparian vegetation areas and steep slopes alongside water bodies	24,76
Rio Claro	4	Riparian vegetation areas and steep slopes alongside water bodies	17,78
	1	Fragments with potential presence of endangered, rare or endemic species	79,52
Santa Barbara II	1	Flood plain vegetation and wetlands	34,38
	4	Riparian vegetation areas and steep slopes alongside water bodies	178,56
	1	Fragments with potential presence of endangered, rare or endemic species	456,37
São José	4	Riparian vegetation areas and steep slopes alongside water bodies	9,64
	1	Fragments with potential presence of endangered, rare or endemic species	66,14
São Pedro	4	Riparian vegetation areas and steep slopes alongside water bodies	27,46
	1	Fragments with potential presence of endangered, rare or endemic species	15,30
Vaz	4	Riparian vegetation areas and steep slopes alongside water bodies	21,60
Total HCV 1			1868,46
Total HCV 4			900,98
Total			2769,45

Table showing areas of HCV value for HCV present or potential presence in smallholdings.

Community	Smallholder	HCV	Area (ha)
Ajará	Adnor Teodoro Martins	4	0,88
		1	8,62
Ajará	Edson Ferreira de Moura	1	3,08
Ajarazinho	Edemundo Pereira Peniche	1	18,74
		4	2,01
Araraquara	Edival Batista da Silva	1	30,71
		4	3,45
Baixo Palheta	Antônio Maria Conceição da Silva e Domingos de Jesus Almeida Neves	4	6,51
	Benedito Maciel Cardoso	1	1,84

IBD CERTIFICATIONS

Continuation of table above.

Community	Smallholder	HCV	Area (ha)
		4	1,26
	Bernardina Ferreira	1	13,55
		4	2,78
	Edilson Gomes Soares	1	10,34
		4	8,00
	Joao Oliveira Lopes Filho	1	16,38
		4	12,19
	João Pontes das Neves	1	3,58
		4	2,16
	Jovelino Ferreira de Oliveira	1	5,15
		4	6,60
	Lazaro Braga Rodrigues e Darley Rodrigues	1	1,28
		4	9,19
	Levinda Santiago das Neves	1	5,34
		4	3,12
	Luiz Carlos Neves dos Santos	4	4,13
	Luiza da Conceição Neves	1	1,46
		4	1,66
	Manoel de Jesus dos Santos	1	0,87
		4	1,31
	Manoel Neves e Pedro Ferreira das Neves	1	17,32
		4	13,29
Raimundo das Neves	4	6,55	
	1	34,52	
Bangu	Orlandino de Jesus Pinheiro	4	2,39
	Regivaldo Maria Lima de Oliveira	1	2,55
		4	2,30
Belazinha	Antônio Carlos da Cruz Fernandes	1	10,11
	Bernardo Santos Queiroz	1	5,12
		4	2,18
	Clemente Furtado Queiroz	1	1,40
		4	1,30
	Domingos Laelson Rodrigues Caetano	1	9,76
	Elias Lopes David	1	3,99
	Francisco Valdeci Gomes da Silva	1	14,34
		4	1,67
	Jonas Leal Pontes	1	3,91
4		6,08	
José Pereira da Silva	1	6,56	
	4	1,17	
Boa Viagem	Edilson Dias Lopes	4	9,79
	Eduardo Ferreira Barros	4	1,25

IBD CERTIFICATIONS

Continuation of table above.

Community	Smallholder	HCV	Area (ha)
	Geovane Barbosa de Moura	1	0,97
		4	7,95
Bom Jardim	Marcelo Silva Gama	1	9,11
		4	0,14
	Mario Cesar da Silva	4	0,84
Bom Jardim de Irituia	Joelto Oliveira da Silva e Martimiano Oliveira da Silva	1	23,18
		4	11,91
	Manoel Raimundo da Silva Peniche	4	2,80
Bom Jardim Jari	Deugenio Jose Pantoja dos Santos	4	1,13
		1	5,03
	Ivani Pantoja do Espírito Santo	1	11,15
		4	0,25
Bom Jardim km 21	Aderson da Silva Pantoja	1	20,46
		4	11,51
	Geminiano Tomé da Silva	1	6,00
		4	2,73
Bom Jardim km 22	Antônio Soares de Oliveira	1	0,71
Bom Jesus	Raimunda do Socorro Conceição de Campos	4	1,03
	Walter de Jesus Cordeiro	1	67,96
		4	2,61
Botafoço	José Carlos Passos de Souza	1	28,50
		4	3,33
	Manoel Monteiro de Souza	1	23,18
		4	1,66
	Manoel Rosário dos Santos	1	1,30
		4	0,10
	Rafael Barbosa Fortado	1	9,13
		4	1,20
Brasileira	Maria da Conceição Chaves Mendes de Pina	1	22,14
		4	13,27
Castanhalzinho	Leomar Pinto de Oliveira	4	1,21
Catita	Francisco Oliveira Lopes	1	3,99
		4	3,24
	Gabriel Almeida Lopes	1	1,59
		4	2,68
	Gabriel Rodrigues Lopes	1	0,49
		4	0,09
	João Batista Rodrigues Lopes e José Carlos Rodrigues Lopes	1	0,62
	José Nazareno de Almeida Lopes	1	8,36
		4	4,82
	José Porfirio Lopes de Brito	1	1,87

IBD CERTIFICATIONS

Continuation of table above.

Community	Smallholder	HCV	Area (ha)
		6	0,79
	José Roberto Conceição da Silva	4	1,79
		1	3,11
	Nilson de Oliveira Brito	1	1,15
		4	1,80
	Nilson José de Oliveira Brito	1	5,45
	Raimundo Conceição Lopes de Brito	4	4,12
		1	3,02
	Raimundo Oliviera Lopes Filho	4	3,27
	Sebastião da Silva Lopes	4	19,65
1		43,60	
Catuense	Maria Sandra de Oliveira Lima	1	21,08
		4	8,07
Cristo Rei	Adamor do Socorro dos Santos Araujo	4	2,41
	Natalino Ribeiro dos Santos	4	0,09
		4	6,00
Fé em Deus	Elvira Lopes da Silva	4	3,53
	Humberto Raimundo	1	1,05
		4	3,35
	Raimunda do Socorro da Silva Rocha	4	0,73
Floresta	Carlos Alberto Gomes dos Santos	4	0,01
		4	3,04
Galiléia	Arlene Rodrigues Gomes	4	4,73
	Candido Mendes Filho	4	2,83
	Grigório Peniche	1	26,62
		4	2,94
	Ozenias Batista de Oliveira	4	0,06
		4	2,35
	Pedro da Silva Peniche	4	2,99
1		7,93	
Glória	Antônio Lopes dos Santos Neves	4	3,97
	Manoel da Conceição de Araújo	4	7,44
	Vitor de Oliveira Gomes	4	1,01
Itabocal	Candido Oliveira Soares	4	2,55
		1	2,01
	Clemente do Socorro Soares de Almeida	1	13,61
		4	0,83
	Deuzarina Ribeiro Lameira e Monico Oliveira Soares	1	12,65
		4	13,68
	Flademir de Jesus Viana Soares e Domingos de Oliveira Soares	4	4,29

IBD CERTIFICATIONS

Continuation of table above.

Community	Smallholder	HCV	Area (ha)
		1	48,47
	João dos Santos	4	3,26
		1	13,26
	Jose Alberto Ferreira de Paula	1	12,80
		4	2,29
	José Nunes de Sousa	1	1,89
		4	0,91
	Manoel Soares de Almeida	1	10,57
	Marcos Batista Soares	4	2,01
		1	3,90
	Merilene do Socorro dos Santos Viana e Paulo Sérgio dos Santos Viana	1	9,86
	Oneide das Neves Oliveira	1	4,52
		4	4,33
	Pedro Edilson da Cruz Soares	1	4,34
		4	5,00
	Pedro Paulo Soares de Oliveira	4	3,79
		1	4,60
	Romulo Antônio Nascimento Santos	1	14,68
4		0,11	
Valdilei Soares Almeida	1	16,81	
	4	0,39	
Itabocal, Floresta	Izael Teixeira Chumber	1	5,71
Km 14	Jones de Castro Soares e Jonilson de Castro Soares	1	6,93
		4	3,72
Lago	Miguel Angelo Cunha de Oliviera	1	10,62
		4	2,52
Maneta	Braulio de Jesus Nunes	1	2,05
	Jaco Silva	1	13,67
	Maria Piedade Fortado Madalena	1	1,27
Manteiga	Antonio Rosivaldo Barbosa de Souza e Maria Luciene Trindade de Souza	4	5,29
		1	17,91
Monte de Ouro	Candida Ferreira Almeida	4	2,93
		1	13,53
	Diego Ferreira Garcia	1	25,29
		4	4,88
	João da Cruz Maciel Silva	4	5,38
1		50,84	
Monte Sião	Israel Ferreira Garcia	1	14,57

IBD CERTIFICATIONS

Continuation of table above.

Community	Smallholder	HCV	Area (ha)
		4	0,83
Monte Sião do Jaboticabá	Raimundo Lopes da Silva	1	4,48
		4	3,00
	Valdeir Lopes da Silva	1	2,13
	Zildo Lopes Sodré	1	0,74
		4	0,04
Monte Sião do Rio Capim	Raimundo Araujo Batista	1	32,52
Monte Sinai	Dalto Monteiro Pastana	1	12,34
		4	6,54
	David do Nascimento Monteiro	4	4,81
	Luzenal Ribeiro dos Santos	4	2,19
	Rosilda dos Santos Yoshimoto	1	11,79
		4	11,05
	Teofilo Pastana Monteiro	4	9,07
		1	8,64
Nazaré	Maria de Oliveira Peniche	1	38,35
		4	6,14
Nossa Senhora do Perpétuo Socorro	Luis Trindade Chaves da Fonseca	4	0,96
	Manoel Lopes da Fonseca	1	34,18
		4	0,25
Nossa Senhora do Perpétuo Socorro - BR010 KM 30	José Hivan Chaves da Paixão	1	5,88
		4	1,20
Nossa Senhora Perpétuo Socorro	Antonio Raimundo de Jesus	1	2,59
	Antônio Lopes e Onivaldo Ferreira Lopes	1	12,96
		4	1,14
	Antônio Raimundo Chaves de Jesus	4	1,44
Nova Alinaça	Darley Pereira Oliveira e Osvaldo de Jesus Bezerra Soares	4	2,19
		1	9,93
	Francisco Rosa de Oliveira	1	0,98
		4	0,43
	Jeronimo Alexandre de Oliveira	1	0,45
		1	11,53
		4	5,21
	José Alexandre de Oliveira	1	0,26
	José Maria Lopes da Silva	4	0,88
		1	1,64
	Severino Alexandre de Oliviera	1	2,41
		4	0,01
Gilson do Socorro Conceição da Silva	4	2,45	
	1	19,96	
Nova Betel	Antonio Silva Furtado	1	3,10
		4	2,15

IBD CERTIFICATIONS

Continuation of table above.

Community	Smallholder	HCV	Area (ha)
	Israel Maciel da Cruz	1	4,30
		4	2,35
	João da Costa Prestes	4	2,73
		1	2,61
	Joniel dos Santos Silva	1	5,95
		4	3,65
	Leonilton Dias da Cruz	4	9,22
		1	16,83
	Lucas da Silva Lopes	1	3,71
		4	1,53
	Maria Raulina da Cruz Silva	4	5,44
		1	22,17
Misael Santos Cunha	1	6,40	
	4	2,54	
Moisés Maciel Ferreira	1	6,84	
Nova Esperança Betil	Cleide dos Santos Pantoja	1	1,08
		4	5,82
	Irlandes João Ferreira Furtado	4	2,12
	José Dorvalino Davi Pantoja	1	1,54
		4	1,89
	José Valdir David Pantoja	4	0,03
4		0,29	
Nova Esperança do Capim	José Maria da Silva Nascimento	1	17,78
		4	0,20
Pacui-Mirim	Jose Roberto da Silva Reis	1	20,71
		4	5,15
	Sebastião Ribeiro dos Santos	1	4,34
		4	3,23
	Mario Oliveira da Silva	1	15,56
		4	3,23
Penha	Doraci Vitorio do Carmo	1	11,87
		4	5,87
Pinheiro	Mário de Oliveira Moreira	1	20,05
		4	0,80
Piquiá	Luiz da Silveira Rodrigues e Manoel Furtado Rodrigues	1	1,23
		4	5,80
	Nazildo Rodrigues de Andrade	4	0,38
		1	12,48
Porta Formosa	Alvaro da Silva Peniche	1	12,37
		4	1,52
Prata	Raimundo Nonato Carvalho da Silva e Antonio Felix Carvalho da Silva	1	22,25

IBD CERTIFICATIONS

Continuation of table above.

Community	Smallholder	HCV	Area (ha)
		4	1,08
Puraquequara	Antonio Batista da Costa	1	39,68
		4	6,63
	Varlindo Batista da Costa e Vivaldo Travassos Cardoso	4	2,43
		1	26,08
Rancho Fundo	Antonio Marcos Ramos de Oliveira, Francisco Lopes de Freitas e Raimundo Erlinton Oliveira de Freitas	4	3,03
	Arivaldo Jaques Teixeira e José Roberto Furtado dos Santos	1	4,68
	Braz dos Reis	1	2,54
		4	1,34
	Edivaldo Gusmão da Silva	1	17,71
		4	7,45
	Clineusa Lima do Nascimento	1	1,64
		4	1,50
	Ezequias José Tomé do Nascimento	1	3,06
		4	1,37
	João Paulo dos Reis	1	6,09
		4	3,17
	José Carlos Ribeiro	1	7,02
		4	4,51
	José Garcia dos Santos Ferreira	1	0,43
	Maria Cleia de Souza Silva	1	6,11
		4	4,93
	Maria de Jesus Gomes de Lima	1	0,25
		1	19,01
	Maria Lucia Pantoja da Silva	1	3,15
Maria Silvaneirde Moreira de Veras	4	2,29	
	1	13,03	
Raimundo Gomes Travassos	1	6,76	
	4	0,15	
Reginaldo Mota de Oliveira	1	12,16	
Rosário	Valdelirio Ferreira da Silva e Valdenilson Santos da Silva	4	0,99
Santa Helena (Nazaré)	Eladio de Oliveira	4	4,57
Santa Júlia	Naife Teodoro de Leão	1	33,49
		4	4,84
Santa Luzia da Estradinha	Francisco Marco Lima de Souza e José Nogueira de Souza	1	2,20
		4	5,05
	Jaci Maria Paixão Soares	4	1,25
	Rafael Costa de Almeida	1	2,06
4		2,73	

IBD CERTIFICATIONS

Continuation of table above.

Community	Smallholder	HCV	Area (ha)
Santa Maria	Carlos Venancio Pereira	1	1,21
		4	8,28
Santa Maria do Curuçá	Juanir Peniche Batista	1	7,96
		4	6,96
Santa Maria do Curuçá (Santana)	Manoel Lopes da Paz	1	11,28
		4	6,11
Santa Maria do Real	Joiscilene de Castro Chumber	1	7,13
		4	0,54
	Jony Soares de Lima	1	33,23
		4	6,70
Santa Rosa	Denedito Reis Costa	1	2,94
		4	3,06
	Raimundo da Silva Peniche	1	0,15
		4	0,42
Santa Terezinha	Geraldo Cordeiro da Fonseca	4	2,03
		4	8,58
	José Vanderlei Barbosa Cardoso	1	12,86
		4	1,87
Santo Antônio	Hermenegildo Oliveira da Silva	1	4,63
		4	1,98
	João Soares da Gama	1	15,48
		4	0,47
	Luiz Cordeiro Furtado	1	1,85
		4	0,85
Santo Antônio do Arauaí	Raimundo Soares de Pinho	4	0,25
		1	8,29
São Benedito	Raimundo Edno de Oliveira Reis	1	7,99
		4	5,92
São Benedito do Jaboticacá	Pedro Guilherme Filho	1	35,58
		4	33,35
	Valdomira Guilherme Rosa	1	50,66
		4	34,7
São Brás do Sempre Vivo	Ruth de Jesus Cordeiro e Otacileno Fonseca	1	29,41
		4	2,03
São Francisco	Eliete de Oliveira Nunes	1	1,47
		4	1,59
São João do Candela	José Ferreira dos Santos	1	5,74
		4	0,43
São João do Candeuá	Antonio Maria de Moura	1	8,84
		4	1,39
São João do Sauã	Angelico Rodrigues Lopes	1	11,26
	José do Carmo Furtado Cunha	1	10,59

IBD CERTIFICATIONS

Continuation of table above.

Community	Smallholder	HCV	Area (ha)
	Manoel Domingos Furtado dos Santos	1	4,72
		4	1,18
	Manoel Furtado dos Santos	1	2,00
		4	1,14
São João do Timboteua	Aureliano Nunes de Lima	1	1,68
	Raimundo Oliveira Nunes	4	3,48
		1	36,86
		1	5,81
		4	0,06
São João km 18	Zelino dos Reis Araújo	4	3,67
São João km 18		1	17,57
São Joaquim km 13	Fabio da Silva Santos	4	6,52
São Joaquim km 13	Teotonio Lopes de Oliveira	1	11,29
São Joaquim km 13		4	2,51
São Pedro da Boa Vista	Messias da Luz Moreira	4	2,69
São Pedro da Boa Vista		1	9,00
São Pedro Damião	Luis Barbosa Lopes	4	3,75
São Pedro do Cunarijó	Antonio dos Santos da Silva Oliveira e Antonio Fernando da Silva	1	5,75
	Raimundo Nonato Pereira da Silva	1	28,43
	Antônio dos Santos da Silva Oliveira e Antônio Fernando da Silva	4	2,38
	Dianor Silva do Rosário	4	3,82
		6	0,79
		1	3,84
	Custódio Nunes dos Santos Filho e José Maria Nunes dos Santos	4	4,37
		1	10,95
	Edino Pontes da Silva	4	2,51
	Hugo Pontes dos Santos	1	2,94
		4	4,28
Pedro da Silva Peniche	4	1,06	
Raimundo Nonato Pereira da Silva	4	7,59	
São Sebastião km18	Andraci Tomé da Silva	1	1,24
São Sebastião km18	João de Jesus da Silva Pantoja	4	3,48
Sororocã	Valdeci Ribeiro da Conceição	1	4,86
Tessalônia	Jailson Pedreira dos Santos	4	5,66
Timboteua	João Felix Chumber de Lima	4	1,57
Vila Canaã	Cirlan Nunes de Oliveira e Fernanda Oliveira de Lima	4	2,22
Vila Conceição	Antonio Marcos Tenório Resende	1	5,75
		4	1,21

Continuation of table above.

Community	Smallholder	HCV	Area (ha)
	José Maria Borges Junior	1	6,63
		4	1,16
		1	4,37
Vila Piquira	Clovis da Silveira Pinto Gonçalves	1	10,65
		4	13,34
Vila Rosário	Antônio Furtado de Andrade	1	18,61
		4	6,78
		Manoel Raimundo Oliveira Ramos	4
Vila Conceição	Antonio Marcos Tenorio Resende	1	11,24
Total HCV 1			2032,48
Total HCV 4			740,04
Total			2772,58

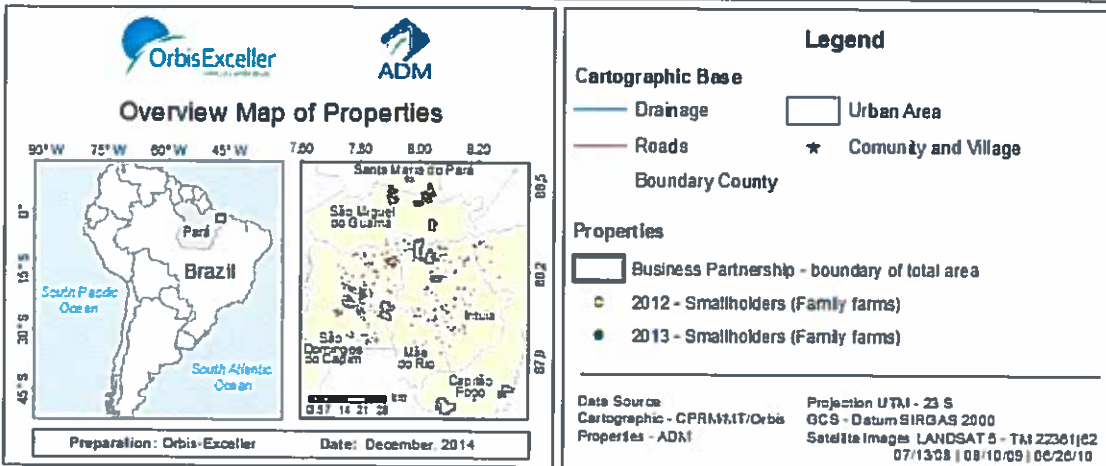
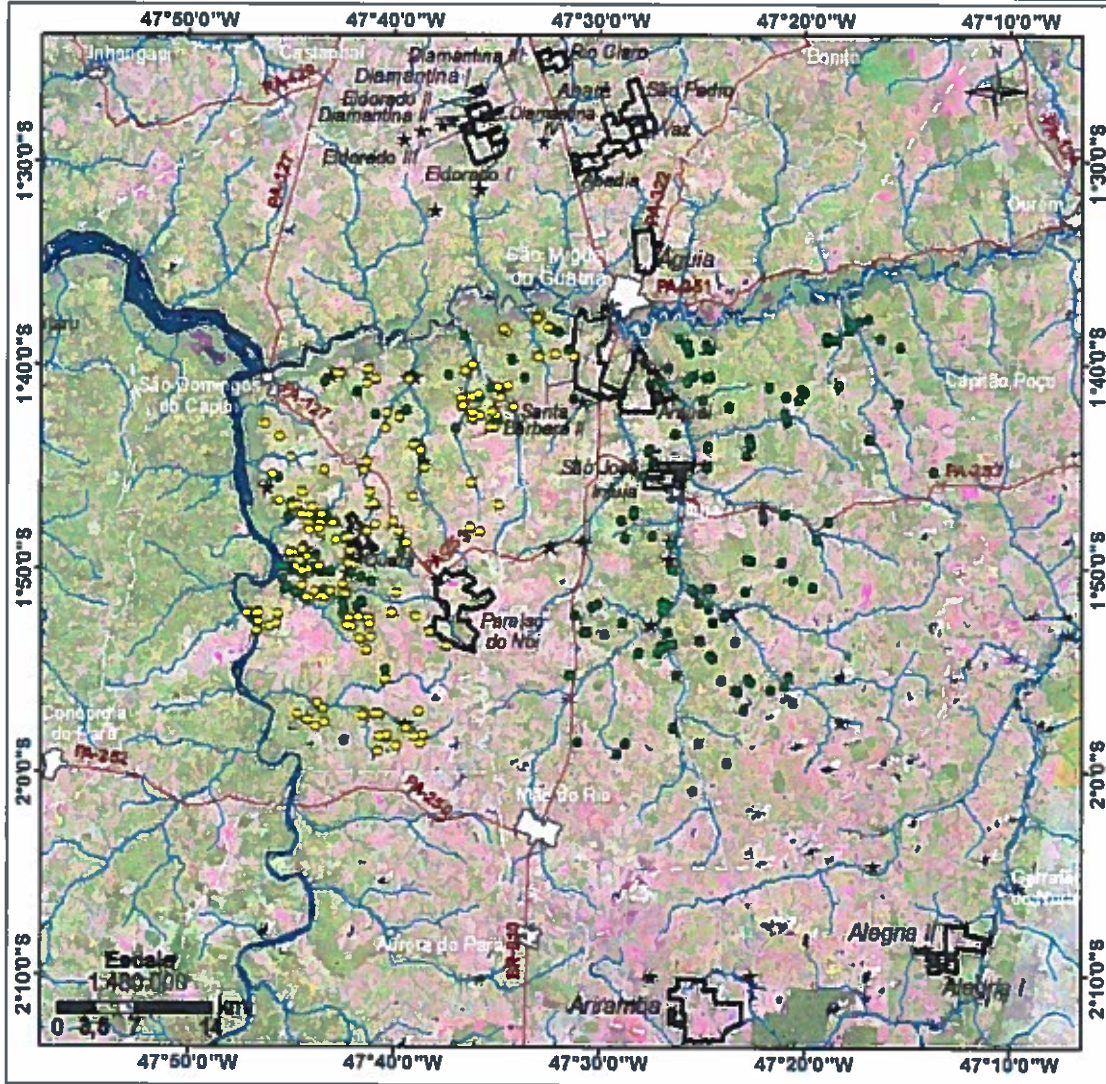
6. Location of the land:

The project is located in the North East of Pará and includes areas in the municipalities of:

- São Miguel do Guama.
- São Domingos do Capim.
- Irituia.
- Mão do Rio.
- Aurora do Pará.
- Concórdia do Pará.
- Santa Maria do Pará and
- Capitão Poço.

The administrative office of ADM and the major activities related to smallholder partnerships are currently located in the city of São Domingos do Capim. The cities of São Miguel do Guamá and Mão do Rio are the headquarters of the Business Partnership.

6.1 Location map of the project area.



7. Summary from the HCV and SEIA report.

The SEIA, including HCV assessment, analysed the primary and secondary information obtained in the region of the project.

One of the conclusions of the HCV and SEIA assessment is that: **No HCV has been identified in the areas intended for oil palm plantation.**

The full version is divided as follows:

Part I - Introduction, Characterization, and Description of the Enterprise and the Social and Environmental impacts of palm oil production;

Part II - The Physical Environment, with analyses of geomorphology, soil and water resources;

Part III – The Biotic Environment, with assessments of vegetation and fauna (birds and mammals);

Part IV - Land Cover and deforestation, with analyses of the deforestation of areas for planting after November 2005;

Part V - Socioeconomics, with analyses of the socioeconomic data about the region and consultations with public and private stakeholders and smallholders (family producers);

Part VI - Integrated Analysis, with assessments of criteria 5, 6 and 7 of RSPO, (Integrated assessment of Social and Environmental Impacts, Mitigation Measures and Socio and Environmental Programs.)

Documents summarised in this report.

- Summary Report SEIA-HCV Rev 2.
- Appendix Summary Report SEIA-HCV Rev 2.

The Social and Environmental Impact and High Conservation Value assessment was carried out by a team of eight specialists with training and background in the Amazon region and social and environmental impact assessment and HCV of the palm oil production.

- **Arthur Wieczorek.** Team leader. Ecologist
MSc. Geoscience and Environment. Specialization In Environmental Sciences Applied to Oil, Gas and Biofuels. RSPOHCV Physical Environment -Water Resources. Geo-processing.
- **Ghislaíne Medeiros de Almeida.** Geologist.
MSc. Environmental Geology and Hydrogeology. Physical Environment –Geomorphology, Water Resources.
- **Paulo Rubim.** Ecologist. MSc. Botany. Biotic - Vegetation.
- **José Admilson daCosta Souza.** Forester. Para-botany. Biotic - Vegetation.
- **Elinete Rodrigues.** Biologist. MSc. Zoology. Biotic - Birds.
- **André Luis Ravetta.** Biologist. MSc. Zoology. Biotic – Mammals.
- **Rosenira Siqueira.** Economist. MSc. Smallholding Development. Socioeconomic.
- **Dalana Costa.** Geographer. MSc. Geoscience and Environment. Socioeconomic and Geo-processing.

Technical Report. Proofreading

Gabrielle Lambrick. Biologist.

7.1 Stages of the SEIA.

The SEIA was carried out in 3 stages to reflect the timing of the planting.

Stage 1. 2013.

Stage 3. 2014.

Both of these stages included HCV Identification, FPIC and advice to ADM on preparation and planting with respect to HCV.

Stage 2.

Assessment of the social and environmental impacts of the project on a landscape level, including HCV.

Step 1. Gathering of all secondary information on the region:

- **Maps and Geographical databases relating to:**
 - Soils.
 - Geomorphology.
 - Water resources.
 - Vegetation.
 - Flora and fauna.
- **Government data used to characterize:**
 - Socio-economy of the municipalities.

Step 2. Field assessment.

Business Partnerships and a sample of the smallholders were visited and interviewed.

Information was obtained on the following:

- **Soils.** Assessment of fragile and peat soils, sampling and analysis of grain size, fertility and herbicide residues;
- **Geomorphology.** Slopes and land cover;

IBD

CERTIFICATIONS

- **Water resources.** Sampling and analysis of water quality;
- **Vegetation.** Status of the vegetation and vegetation survey in forest set aside (Legal Reserves). Emphasis on the identification of threatened, endangered, rare and endemic species;
- **Fauna.** Birds and Mammals, with emphasis on the identification of threatened, endangered, rare and endemic species;
- **Local communities.** Consultation with communities and smallholders about the impact of the activities.
- **Stakeholders (local institutions).** Consultation with local government institutions (county departments, rural unions, community leaders and associations of smallholders);
- **Field workers.** Interviews with field workers in agricultural activities.

Step 3. Organisation of information collected.

Data was analysed and collected and further information collected by Geographic Database and Thematic Mapping.

Maps included in the Summary Report SEIA-HCV Rev2:

- Figure 3.1 - location map of project's area.
- Figure 3.2 – map of access roads.
- Figure 3.3 – Map of land use in the project area.
- Figure 3.4 - Economic Ecological Zoning Map of Pará - 2007.
- Figure 3.5 - Map of the Agro-Ecological Zoning for Palm Oil – Management Class B.

Maps included in the Appendix Summary Report SEIA-HCV Rev2:

- Appendix 3 – Geomorphology Map.
- Appendix 4 – Soils Map.
- Appendix 5 – Soil map – grain size – coarse grain.
- Appendix 6 – Soil map – Fertility – Cation Exchange Capacity (CEC).
- Appendix 7 – Map of points on soil sampling.
- Appendix 8 – Drainage Map.
- Appendix 9 – Map of points on water sampling.

7.2 Summary of the social and environmental impacts.

- The social and environmental fragility of the region is due to low levels of human development and infrastructure.
- The greatest environmental degradation of this region is by agro-livestock activity.
- The ecological importance of Endemism Center of Belém, means that any economic activity has a heightened social environmental responsibility.
- The social and environmental impacts are both positive and negative. The mitigation and compensation measures seek to decrease, mitigate or compensate for the adverse environmental and social impacts, while other programs and measures aim to maximize the positive impacts.
- Regionally, there are local communities known as Maroons, which essentially consist of smallholders, frequently as family farmers. Such communities were identified and mapped.
- There are two indigenous lands in the region (Maracaxi and Upper River Guama), located approximately 20 km from the areas for planting oil palm. Such areas will not be directly influenced by the activities.
- Two properties (Arimamba and Alegria) could have an indirect impact on Indigenous Land of the Upper River Guama by interfering with the water quality of rivers that cross these properties and form the River Guama.

The region has very low levels of economic and social development, especially in terms of education, sanitation and health.

- The positive impacts could be related to boosting the local economy, labour supply and local businesses.
 - Generation of formal direct and indirect jobs and increased income;
 - Stimulation of the service sector. i.e. Agriculture, agricultural machinery and equipment, hospitality, food, trade, occupational medicine, fuel and transport.
 - Stimulation of the informal services economy.

7.3 Summary of the soil, water and vegetation surveys.

- No peat of fragile soils were found.
- Chemical analysis of the soils to give base-line information for improvement and to confirm suitability for oil palm.
- Mapping and analysis of ground and surface water. Management recommendations for riparian zones.
- Forest fragments of logged over upland rainforest. Management recommendations.
- Vegetation and grass types. Predominantly cattle grazing and shrub lands.
- Fauna surveyed and species identified 38 endangered species. Management recommendations.
- Analysis of land type and vegetation prior to November 2005. 13 plant species threatened with extinction in the forest fragments were identified.
- No replacement of primary vegetation was identified.

7.4 Summary of the soil, water and vegetation surveys..

- HCV 1. Small areas identified as HCV1.
- HCV 2. Not identified.
- HCV 3. In the region, the environment known as grasslands, campinaranas or plain white sand can be classified as HCV 3. Although this environment has not been identified in the areas of the farms assessed, it can be found in the region and this HCV was indicated as potentially occurring in the landscape.
- HCV 4. The rivers and streams are extremely important to the livelihoods of local people, being used for various activities such as drinking, bathing, fishing, transportation, watering livestock, transportation and recreation. Thus, they were classified as HCV 4 and 5 and the water quality of the rivers and streams under the influence of plantation activities should be monitored and maintained throughout the activity.
- HCV 5. Consultations with local communities identified some HCV 5.
- HCV 6. Not identified.

8. Summary of the management plans.

With most of the planting now complete, it is noted that the management planning covers the mitigation or enhancement of social and environmental impacts identified. Summarised:

- Erosion control on access roads, service roads and planting.
- Avoid contamination of soil and water by residues of herbicides and inputs.
- Avoid the increase of dust near communities by transporting FFB.
- Environmental regulation of the properties (Legal Reserve and Permanent Preservation Areas).
- Monitoring and promotion of biodiversity.
- Protection of endangered species from illegal hunting, fishing and logging in the Legal Reserves.
- Control of immigration, population growth and male to female ratios.
- Health and safety.
- Ensuring adequate housing.
- Increasing the use of local public services (health, education, public safety).
- Measures to avoid the negative effects of possible economic damage to the business from climatic factors, pests and diseases.
- Measures to avoid smallholder dependence on income from palm oil production, including food security.
- Avoiding economic unsustainability of the project for smallholders.

In order to achieve the RSPO certification requirements, particularly those related to procedures for new plantings, ADM acknowledges that it is vital to implement the recommendations of the SEIA and HCV report.

To ensure that operations follow the recommendations, ADM shall designate a person responsible for:

- The monitoring and implementation of measures for the protection and maintenance of HCV, especially concerning the delimitation, protection and recovery of Legal Reserves and Permanent Preservation Areas (riparian forest).
- This person will be given the authority, time and resources to train staff properly, prepare robust Standard Operating Procedures (SOPs) including recommendations contained in the detailed SEIA/HCV report, in order to ensure effective maintenance and enhancement of the Identified HCVs.

The following is a summary of the HCV management actions, especially those related to HCVs present in properties under cultivation:

HCV 1.

- Maintain, protect and increase forest areas present in Legal Reserves of business partnerships and smallholdings that contain or are likely to contain rare, threatened, endangered and endemic species.
- Maintain and protect the wetlands along the main rivers.

HCV 3.

- Maintain and protect areas of natural grasslands or sandy plains.

HCV 4.

- Maintain, protect and enhance areas of PPA in the properties of business partnerships and smallholders.
- Maintain, protect and enhance areas of PPA and steep slopes in the properties of business partnerships and smallholders.

HCV5.

- Maintain and protect important tree food species (Brazil nut, bacuri, piquiá) in smallholdings.
- Protect and maintain the quality of local water resources.

HCV 6.

- Protect possible archaeological sites on smallholdings and business partnerships.

One of the conclusions of the HCV and SEIA assessment is that: **No HCV areas have been identified in the areas intended for palm oil plantation.**

9. Verification statement.

This verification was conducted as a desk top exercise at the auditor's office in the United Kingdom over the period of 21st to 25th July 2014. The assessment and plan are comprehensive, professional and compliant of RSPO principles, criteria and indicators.

The Social and Environmental Impact and High Conservation Value assessment was carried out by a team of eight specialists with training and background in the Amazon region and social and environmental impact assessment and HCV of the palm oil production. Arthur Wieczorek, the team leader, is an RSPO HCV approved assessor.

One of the conclusions of the HCV and SEIA assessment is that: **No HCV areas have been identified in the locations intended for oil palm plantation.**

Results from the SEIA and HCV assessments are incorporated into planning and management for the new plantings and related development to ensure that:

- It is based on the free, prior and informed consent of any local peoples whose lands are affected (see RSPO criteria 2.2, 2.3, 6.4, 7.5, 7.6)
- Provides for the maintenance or enhancement of all identified HCVs (see RSPO criteria 5.2 & 7.3)
- Excludes all identified primary forests from clearance (see RSPO criterion 7.3)
- Provides for appropriate management of peat (see RSPO criteria 4.3 and 7.4)

10. Formal signing.

Signed on behalf of IBD



David Ogg FICor.
Senior Lead Auditor.
Date: 25th July 2014

Signed on behalf of Company:



Diego Di Martino

Date: