

20th June 2023

Dear Sir/Madam,

STAKEHOLDER CONSULTATION INVITATION TO COMMENT ON RSPO (P&C) RE-CERTIFICATION AUDIT

We are pleased to invite you to provide comments in the stakeholder consultation meeting.

Kuala Lumpur Kepong Berhad – Batu Lintang Palm Oil Mill, has applied to Global Gateway Certifications Sdn Bhd to carryout re-certification activities in accordance with the Roundtable on Sustainable Palm Oil (RSPO P&C) standards.

The standards that shall be applied in the assessment are as below;

- RSPO Principle & Criteria Certification (RSPO P&C 2018) – Malaysia National Interpretation (MYNI) Nov 2019 – RSPO SCC Systems Documents 2020.

As scheduled, the re-certification assessment will be carried out on **6th – 10th August 2023**. You are cordially invited to send any comments if applicable within the period from now until the closing meeting on the last day of the assessment.

Applicant	Kuala Lumpur Kepong Berhad – Batu Lintang Palm Oil Mill
RSPO Membership	1-0014-04-000-00
RSPO Palmtrace (RSPO PO_ID)	RSPO_PO1000000894

Contact details	Mr. Thien Jing Wen jw.thien@klk.com.my Tel : (605) 2417 844 Address: Wisma Taiko, 1, Jalan S.P. Seenivasagam, 30000 Ipoh, Perak Darul Ridzuan, Malaysia
------------------------	---

Brief business information of applicant	<p>Kuala Lumpur Kepong Berhad (“KLK”) is a company incorporated in Malaysia and listed on the Main Market of Bursa Malaysia Securities Berhad with a market capitalisation of approximately RM22.318 billion at the end of September 2022. KLK is amongst the largest plantation companies in Malaysia, with a land bank of close to 300,000 hectares, spread across Malaysia (Peninsular and Sabah), Indonesia (Belitung Island, Sumatra, Kalimantan) and Liberia.</p> <p>From the RaCP Tracker record, the KLK Batu Lintang Complex does not have the New Planting Procedure (NPP) and Remediation and Compensation Plan (RaCP) process that is running with the RSPO.</p>
--	--



PALM OIL MILL (POM) FOR THIS ASSESSMENT

Name of Palm Oil Mill	Mill Capacity	Supply Chain Model	Location	GPS reference		Forecasted Annual output (MT)	
(POM)	MT/HR		Address	Longitude	Latitude	CPO	Palm Kernel
Batu Lintang POM	25	IP	09800 Serdang, Kedah.	100.62861	5.19361	30,168.60	6,534.20

SUPPLY BASE OF FFB TO THE ABOVE POM TO BE INCLUDED IN THIS ASSESSMENT

Owned Oil Palm Plantation / Association	Address	GPS reference		Area Summary (Ha)		Annual FFB Production (MT)
		Longitude	Latitude	Total	Planted	
Batu Lintang Estate	Ladang Batu Lintang, 09800 Serdang, Kedah.	100.628388	5.204475	1,808	1,730	30,826
Buntar Estate	Ladang Buntar 09800 Serdang, Kedah.	100.601923	5.168231	899	806	16,282
Pelam Estate	Ladang Pelam, 09009 Kulim, Kedah.	100.729060	5.504030	2,960	2,804	49,387
Subur Estate	Bt. 23 Batu Kurau, 34520 Taiping, Perak.	100.795414	5.048188	1,282	1,251	22,857

Stakeholder consultation is one of the most important parts in certification process; during which relevant national, regional as well as local stakeholders are asked to give their views and opinions as to whether the applicant's certification units comply with the requirements of the RSPO's requirements.

We invite all stakeholders to take part in this consultation process as you can make a positive contribution to the certification decision. We invite you to raise any issues, both positive and negative, by sending a written response by mail, fax or by e-mail to our Global Gateway Certifications Sdn Bhd .

For your guidance, you may consider the following points:

- Environmental protection.
- Biodiversity conservation.
- Opportunities for employment.
- Provision of housing, sanitation, amenities and educational support.
- Company approach to community development.
- Participation in decision making.
- Any other issue, both positive and negative that you consider may be of relevance to the assessment.

Please direct your comments to:

Scheme Manager,
Global Gateway Certifications Sdn Bhd,
No.10, Jalan Rasmi 7,
Taman Rasmi Jaya,
68000 Ampang,
Selangor Darul Ehsan, Malaysia.

Telephone: +60 3 4256 2689

Fax: +60 3 4256 2687

Email: jamal@ggc.my / admin@ggc.my

Details on the audit team:

Muhammad Syafiq bin Abd Razak (Lead Auditor)

Graduate in plantation management with more than 7 years working experience in various plantation company and skills in Good Agricultural Practices (GAP) including Integrated Pest Management (IPM). Also, have more than 8 years' experience as an auditor / Lead Auditor in various schemes.

Fully trained in similar agriculture certification programs such as RSPO, SCCS, MSPO, ISCC and etc. Qualified as Lead Auditor/Auditor in several certification programme. Involved in RSPO and MSPO assessment since 2014. Involved in audits conducted in for many different companies in Malaysia, Indonesia, Australia, Pakistan, India, Arab Saudi and Ivory Coast. Completed and certified MSPO Auditor course in 2014 (3rd Batch) held by MPOB.

Experienced in handling mineral and peat soil oil palm estate. Knowledgeable in chemical in control of weeds and pest & disease in Oil Palm Plantation sector. Understanding in Industrial relation and labour law. Attended OSH Act 1994 & Regulations and Factories & Machinery Act 1967 & Regulations Training. Participated in Workshop for Oil Palm Growers on Peat at Bogor, Indonesia. Completed and attended Social Impact Assessment Training at Bogor, Indonesia organized by Remark Asia. Also, has attended training for RSPO GHG calculation on year 2015 in Kuala Lumpur and Social Auditing Workshop on year 2019 in Melaka and conducted by Verite. Member of GGC MSPO audit team. Able to speak and understand Bahasa Malaysia and English.

Mohd Azmi Samynathan bin Abdullah (Auditor)

Mohd Azmi holds an MBA majoring in Human Resource Management, Bachelor of Business in Business Administration, Diploma in Human Resource Management and Certificate in Agriculture from University of Western Sydney, RMIT University, Australia, University Malaya and Institut Pertanian Semenanjung Malaysia respectively.

He has vast experience in the field of Human Resource Management spanning more than two decades in the manufacturing industry. Prior to this he held various key management positions in Human Resource & Administration with several multinational companies. Azmi has extensive hands-on experience in recruitment and selection of Foreign Labour, Managing Conciliation meetings at the Labour and Industrial Relations Department, handling employee disciplinary issues, employee welfare, developing, reviewing & updating human resource policies and procedures. He has been advising management teams throughout his career on requirements of the Labour Laws. Further, Mohd Azmi, is also a Panel Member of the Industrial Relations Court representing the employers appointed by the Minister of Human Resources. Further, he is also an External Supply Chain Assurance System (ESCAS) auditor in the cattle industry conducting audits in Malaysia, Brunei, Singapore, and Vietnam.

Besides his vast experience in HRM, Azmi is also an experienced auditor in second and third-party auditing system. Fully trained in ISO 9001:2008 (Quality Management System) Lead Auditor Course and successfully completed MSPO, MSPO-SCCS (endorsed by MPOCC) and RSPO Auditors Training Course. Further, he has also attended Social Auditing Workshop in Melaka in 2019 conducted by Verite. He is a member of the GGC MSPO audit team and able to read and write in English and Bahasa Malaysia fluently.

Md Jefri Bin Shara'ai (Auditor)

Bachelor Degree in Chemical Engineering and Master Degree (Science) in Quality & Productivity. Work experience since year 1992, in various industries and discipline that include manufacturing, engineering services, quality management, environmental management, research and development. Audit experience in Quality Management System (ISO9001), Environmental Management System (ISO14001) and Safety & Health (OHSAS 18001) since year 2008.

Qualified auditor in sustainability certification programs such as Roundtable Sustainable Palm Oil, Principles & Criteria (RSPO P&C), Roundtable Sustainable Palm Oil, Supply Chain (RSPO SCC), Malaysian Sustainable Palm Oil (MSPO) and Malaysian Sustainable Palm Oil, Supply Chain (MSPO SCCS). Member of GGC MSPO audit team. Able to speak and understand Bahasa Malaysia and English.

Baskaran Sankaran (Auditor)

Master of Occupational Safety & Health Risk Management from Open University Malaysia, Diploma in Mechanical Engineering and Management Programme. More than 20 years of working experience in various industries. Involved in RSPO assessment since 2014. Involved in audits conducted in for many different companies in Malaysia and Indonesia. Completed ISO 9001:2008 and ISO 14001:2004 lead auditor course in 2006 & 2010. Also completed RSPO Lead Auditor training in December 2014. Qualified as Lead Auditor/Auditor in several certification programme such as RSPO, MSPO, ISO and etc. Member of GGC MSPO audit team. Able to speak and understand Bahasa Malaysia and English.

Comments received within 30 days from the date of this letter will be considered in this Assessment. Please include the following information should we need to contact you for clarification on any issues raised:

Name : _____
Address : _____
E-Mail : _____
Phone Number : _____
Summary of Issue : _____

Comment:

If you wish your comments to be treated confidentially or remain anonymous, please mark your reply “CONFIDENTIAL”.

We thank you for the participation and feedback.

Yours Sincerely,

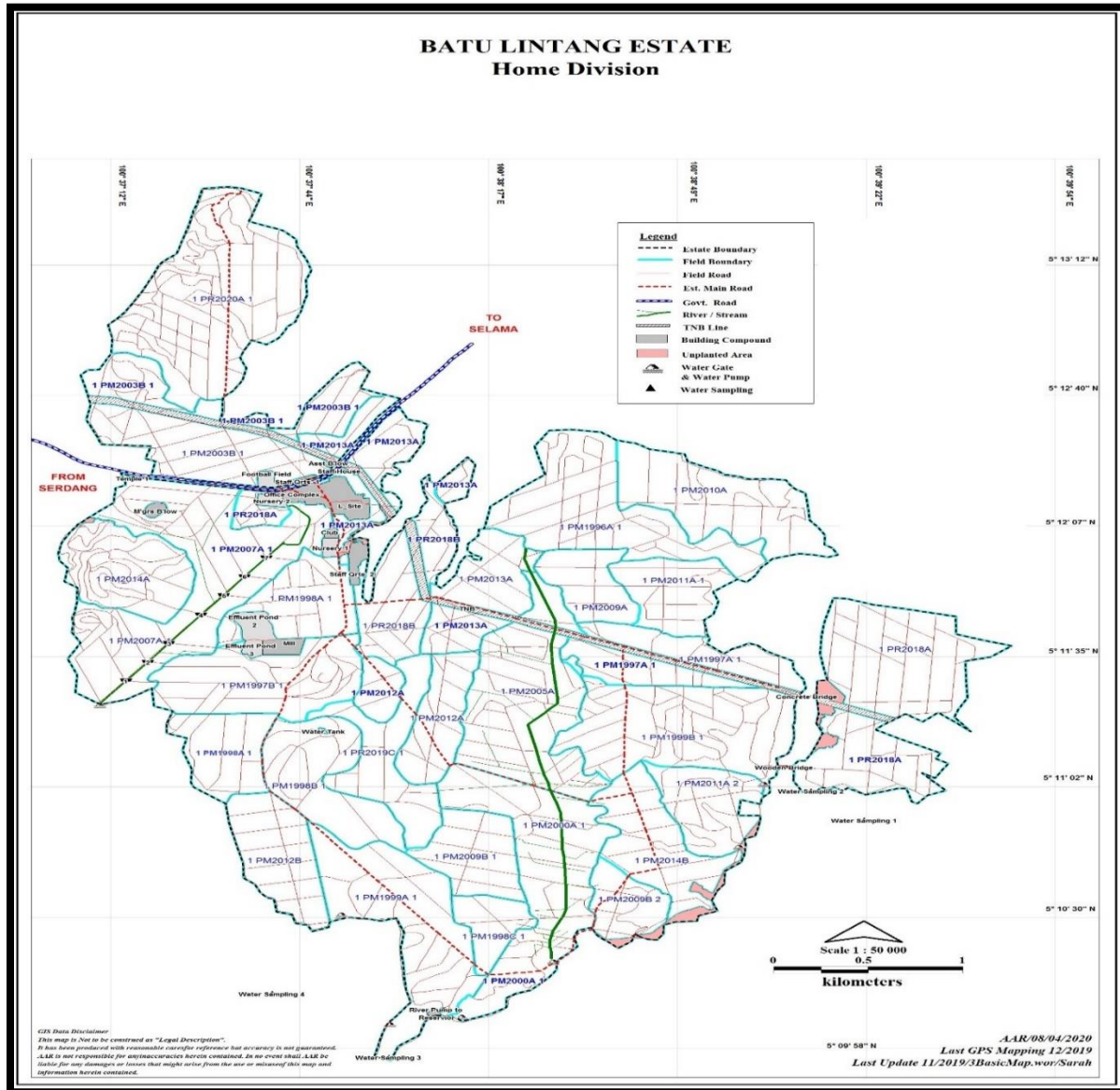


Muhd Jamalul Arif,
Scheme Manager,
Global Gateway Certifications Sdn Bhd



Annex 1 – Location Maps

Figure 1: Batu Lintang Estate



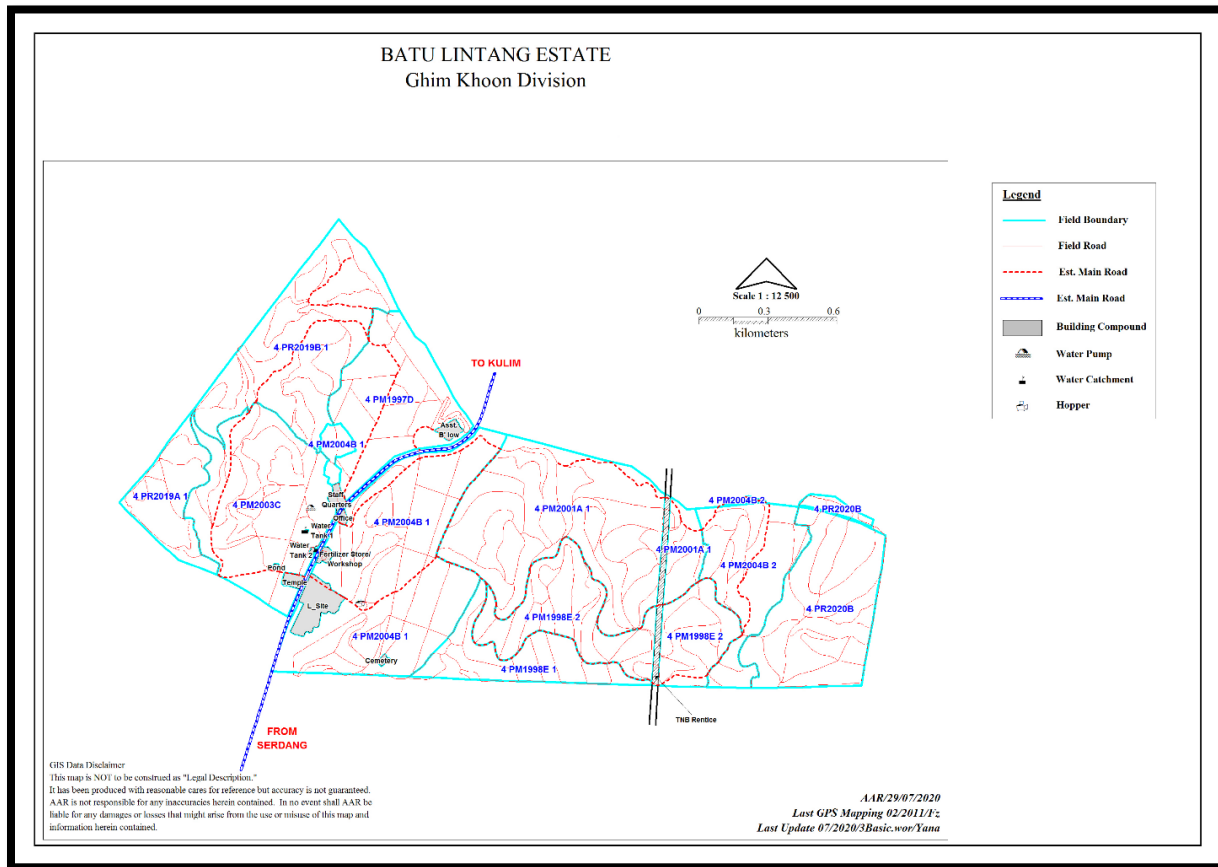
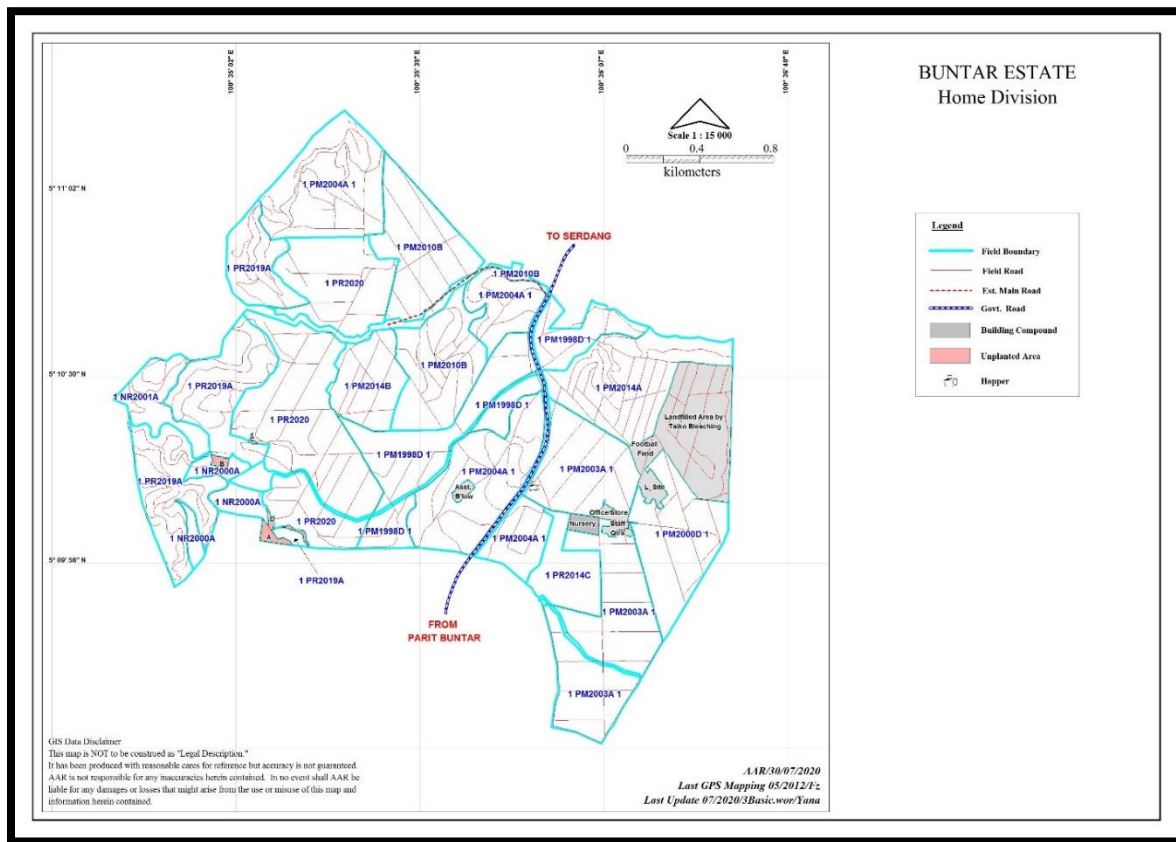
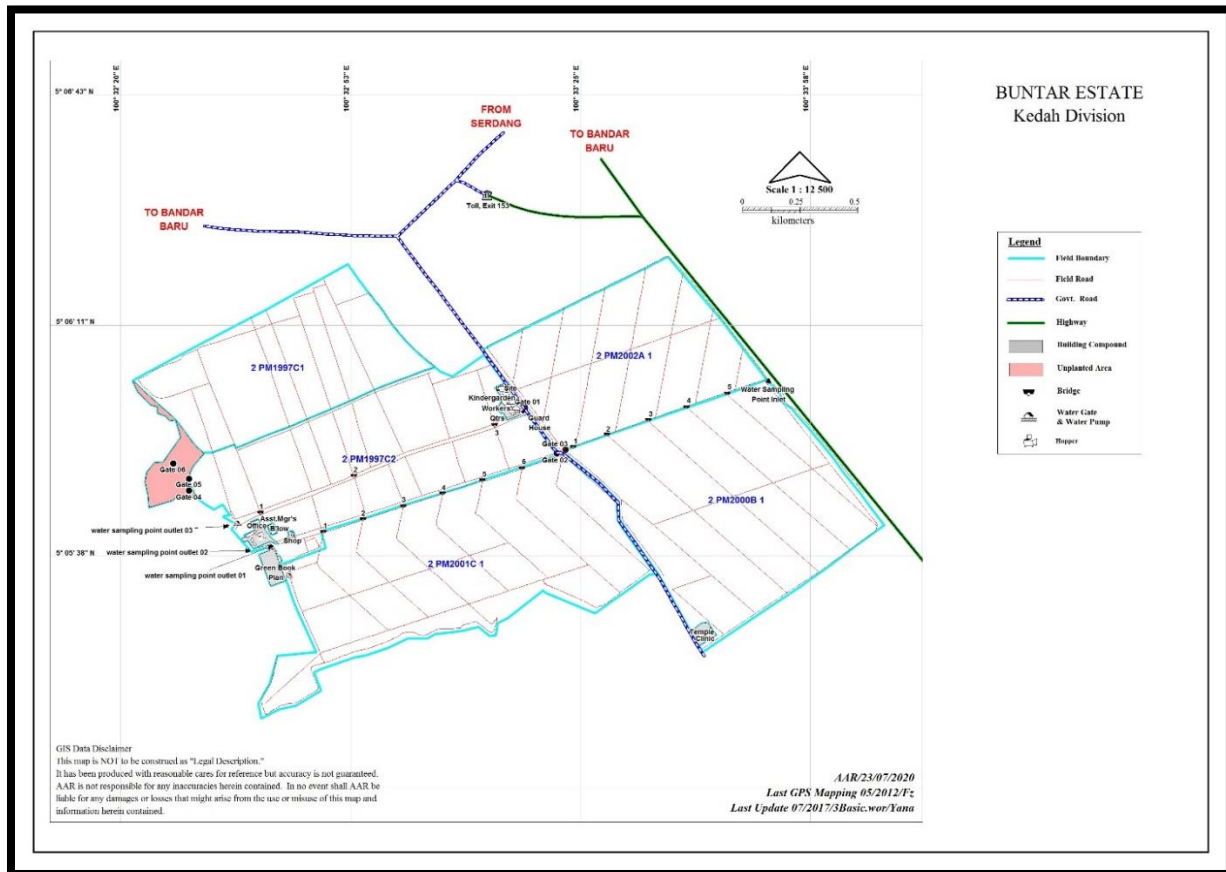


Figure 2: Buntar Estate





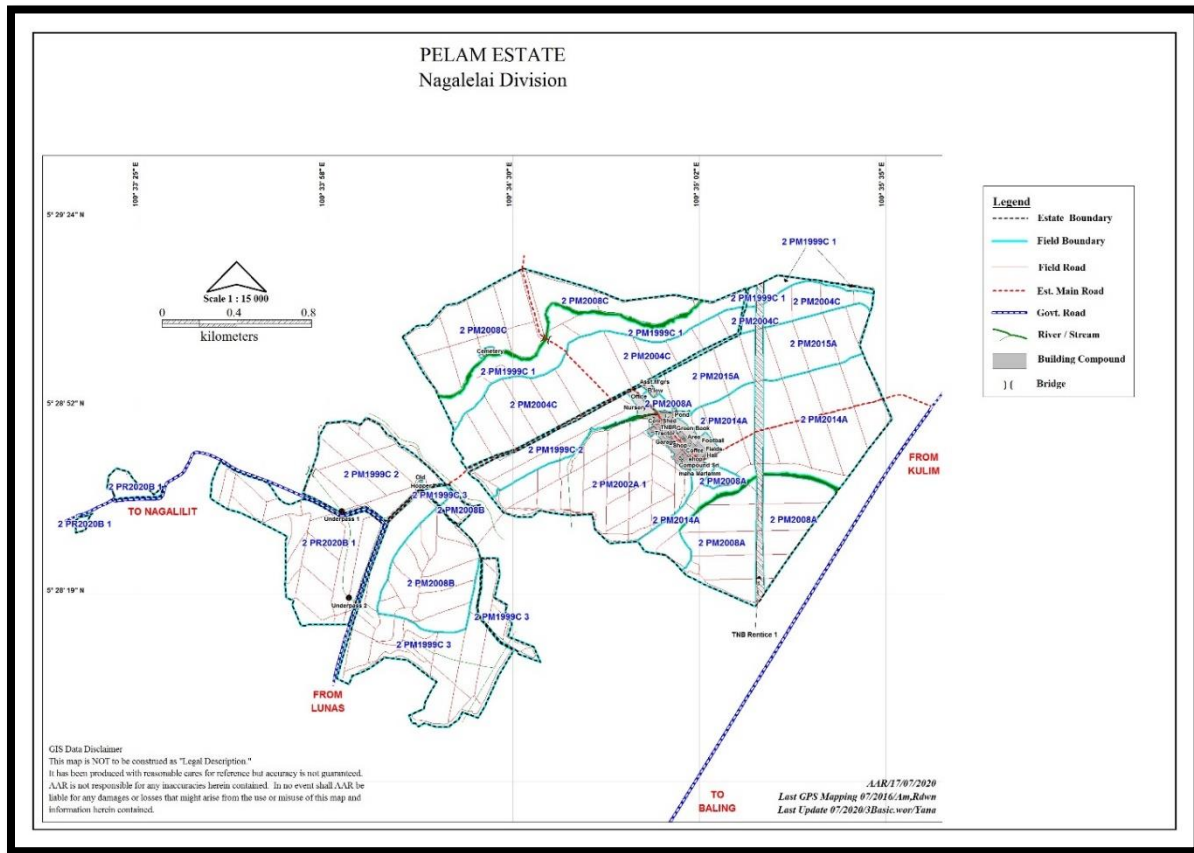
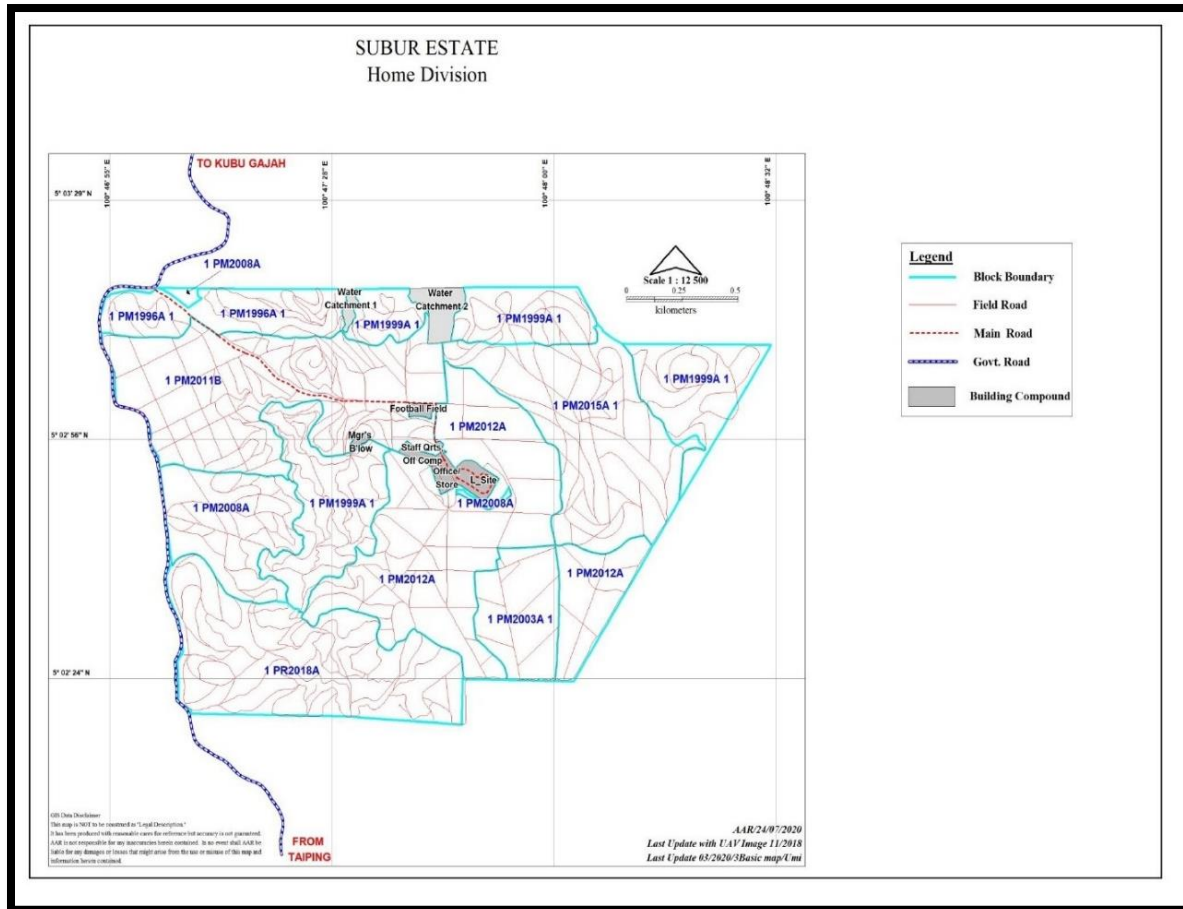
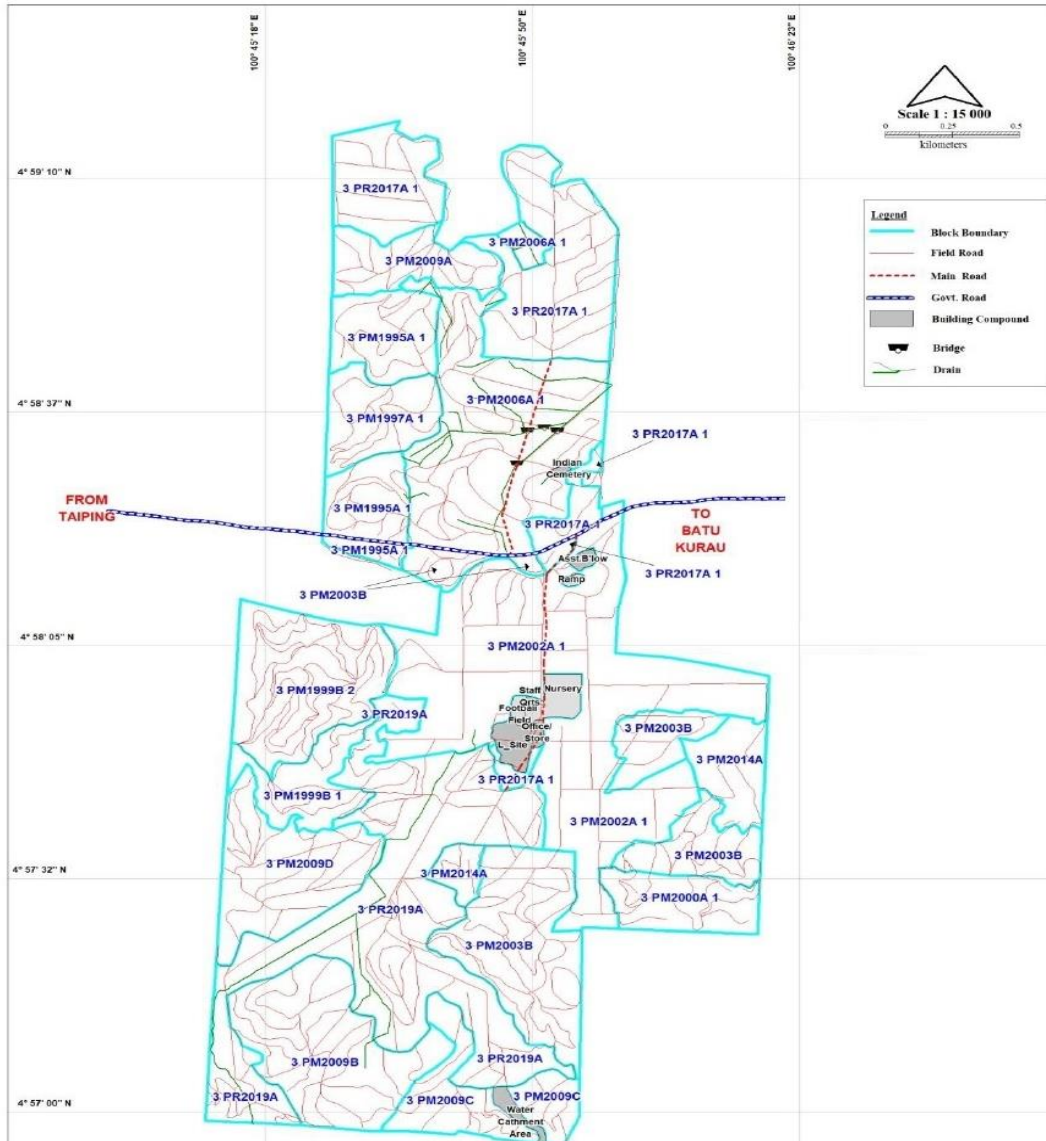


Figure 4: Subur Estate



SUBUR ESTATE
Norseman Division



GIS Data Disclaimer
This map is NOT to be construed as "Legal Description."
It has been produced with reasonable care for reference but accuracy is not guaranteed.
AAR is not responsible for any inaccuracies herein contained. In no event shall AAR be
liable for any damages or losses that might arise from the use or misuse of this map and
information herein contained.

AAR/23/07/2020
Last GPS Mapping 02/2013/Ss
Last Update 07/2020/3Basic map/Uni



