



Summary Report of Planning and Management
PT. Prima Mitrajaya mandiri
Kutai Kartanegara District – East Kalimantan Province, Indonesia

1. Executive Summary

PT Prima Mitrajaya Mandiri (PT PMM) is a subsidiary of PT Evans Indonesia under the auspices of MP Evans Group PLC. MP Evans Group PLC has been registered as a member of the RSPO (membership number 1-0027-06-000-00).

PT Prima Mitrajaya Mandiri (PT PMM) received a license (Izin Lokasi) to use land area of 20.000 hectares according to SK Bupati Kutai Kartanegara No.39/DPtn/UM-38/XII-2005 dated December 26, 2005, which was extended by SK Bupati Kutai Kartanegara No.88/DPN.K/IL-84/XII-2006 dated December 29, 2006. On June 26, 2007 there was an extension and revision by SK Bupati Kutai Kartanegara No.47/DPN-L/IL-46/VI-2007 for use of land for oil palm plantation area of 21.500 hectares. PT PMM receive the IUP from Bupati Kutai Kartanegara on July 26, 2007 by SK No. 503/50/SK-Disbun Kukar/VII/2007. PT PMM has conducted a review of environmental and social factors highlighted in the EIA document that has been verified by the government through SK Bupati Kutai Kartanegara No. KAKK/27/AMDAL/KELAPA SAWIT/2008.

Location of PT PMM is at 116°28 ' - 116°46' E and 0°10 ' - 0°24' S, in the province of East Kalimantan, Indonesia. Administratively the area is located in three sub-districts, namely Kota Bangun, Muara Kaman and Muara Wis, Kutai Kartanegara District, East Kalimantan Province.

There are five estates in PT PMM, i e. Loleng Estate (LLE), Benua Puhun Estate (BPE), Kaman Hilir Estate (KHE), Bukit Jering Estate (BJE) and Muara Wis Estate (MWE).

PT PMM has conducted HCV Assessment carried out by Envirologic Consulting led by Dr Sanath Kumaran and Aksenta led by Resit Sozer. Both Dr Sanath Kumaran and Resit Sozer are an RSPO-accredited HCV lead assessors. Envirologic Consulting carried out HCV assessment in Loleng Estate and Benua Puhun Estate in August 2011 whilst for the other PMM estates namely Bukit Jering Estate, Kaman Hilir Estate and Muara Wis Estate were carried out in June 2012 by Aksenta.

Envirologic Consulting and Aksenta have assessed HCV comprehensively for PT PMM using HCV Consortium for Indonesia (2009) Guidelines for identification of HCV in Indonesia to comply with RSPO New Planting Procedure (NPP) and the Indonesian National Interpretation of RSPO Principles and Criteria (RSPO INA-NIWG, May 2008).

Envirologic Consulting and Aksenta have assessed HCV comprehensively for PT PMM using HCV Consortium for Indonesia (2009) Guidelines for

RSPO

identification of HCV in Indonesia to comply with RSPO New Planting Procedure (NPP) and the Indonesian National Interpretation of RSPO Principles and Criteria (RSPO INA-NIWG, May 2008).

From document tracings and interviews of stakeholders, the assessors noted that the area was a timber concession (HPH) which has been logged and re-logged about 30 to 40 years ago. From the interviews conducted, it was also found by the assessors that the area experienced severe fires in 1982 and 1997 which had greatly impacted the vegetation and land cover.

From the field assessments of this survey it was found that the location of PT PMM has no primary forest. Satellite imagery of 2009 and 2011 examined by the assessors found that the project site is dominated by secondary forest and there is no evidence of tropical rain forest.

From the HCV assessment it was found that the area consists of:

- HCV 1 : 977,87 ha or 7,5% of the “Kadastral”
- HCV 3 : 0,92 ha or 0,007% of the “Kadastral”
- HCV 4 : 600,02 ha or 4,65% of the “Kadastral”
- HCV 6 : 0,06 ha or 0,0006 % of the “Kadastral”

The AMDAL study (EIA Assessment) of PT PMM had covered all environmental and social aspects of the various oil palm plantation development activities ranging from land clearing, maintenance and harvesting. Apart from outlining the positive and negative impacts of the various activities, the study also recommended environmental and social management plans to monitor and enhance the positive effects and reduce the negative impacts of oil palm cultivation.

2. Reference Documents SEIA and HCV assessment report

- SEIA Assessment Report: Social Assessment and Environmental Report PT PMM by Aksenta dated August 2012.
- HCV Assessment Report: HCV Assessment Report PT PMM by Aksenta dated August 2012.
- Land Permit (Izin Lokasi) PT PMM: SK Bupati Kukar No. 39/DPtn/UM-38/XII-2005 dated December 26, 2005 and SK Bupati Kukar No.47/DPN-L/IL-46/VI-2007 (Revised Land Permit).
- HCV Resources Network Toolkit, 2008.
- Regulations of the Government of Indonesia with regards to conservation management and monitoring, Redlist IUCN, CITES and PP No. 7 of 1999.
- Location map of PT PMM.
- AMDAL Document.
- Map of planting program PT PMM

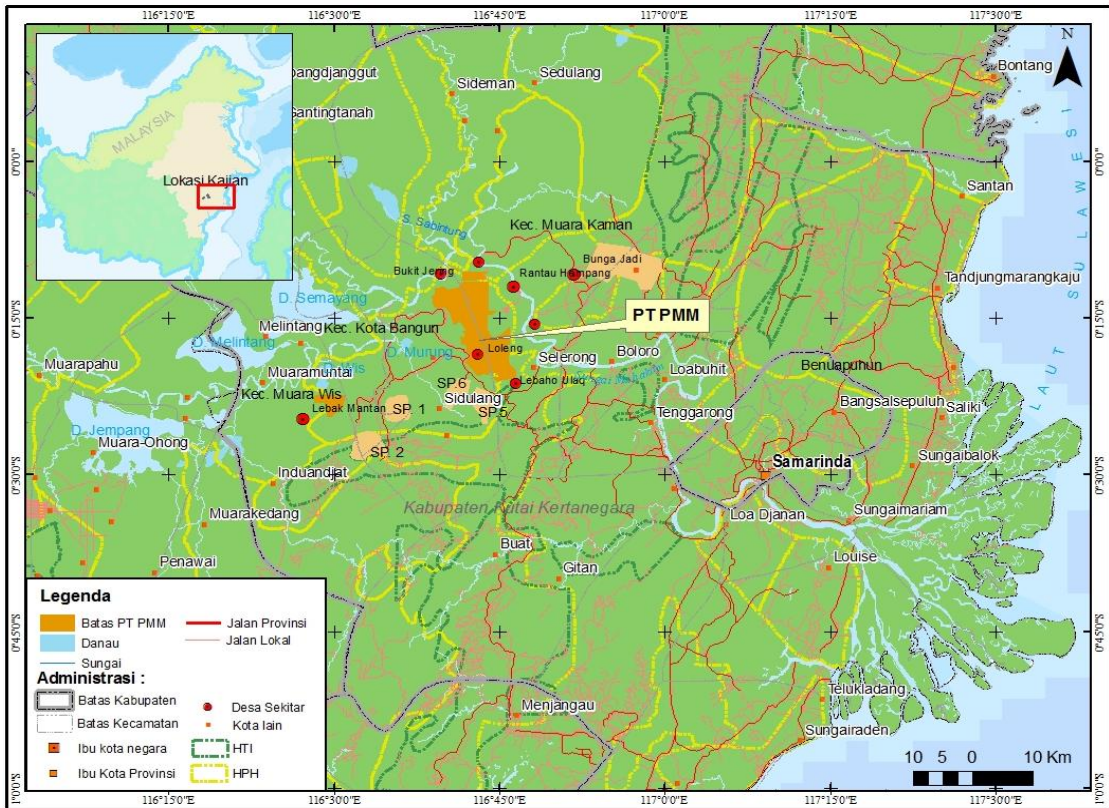
RSPO

a. List of legal documents and regularly permit

No	Kind of Permit/ Recommendation	Approved by	No. And Date	Ha
1.	Deed of Establishment	Notary Ni Putu Sri Sunardewi, SH, Approval of Human Rights and Justice	No. 13, date: 13 th September 2005 C-16441 HT.01.01TH.2006, dated 06 June 2006	
2.	Tax payer Notification Number	Tax Serve Office	02.504.354.8-058.000	
3	Permitted Area (Izin Lokasi)	Bupati Kutai Kartanegara	No. 47/DPN.K/IL-46/VI/2007, dated 26 June 2007	± 21,500
4.	Ijin Usaha Perkebunan/IUP (Plantation Operational Permit	Bupati Kutai Kartanegara	No. 503/50/SK-DISBUN KUKAR /VIII/2007, dated 26 July 2007.	± 21,500
5.	Social Environment Impact Assessment (AMDAL)	Bupati Kutai Kartanegara	No. KAKK/27/AMDAL/KELAPA SAWIT/2008, dated 24 September 2008.	± 21,500
6.	Analysis Area	Balai Pemantapan kawasan Hutan Wialayah VI	No. S.499/BPKH IV-2/2011, dated 13 June 2011 state that the proposed areas for ± 16,577 is not included in forest area (Areal Penggunaan Lain/APL)	

RSPO

b. Location Map.

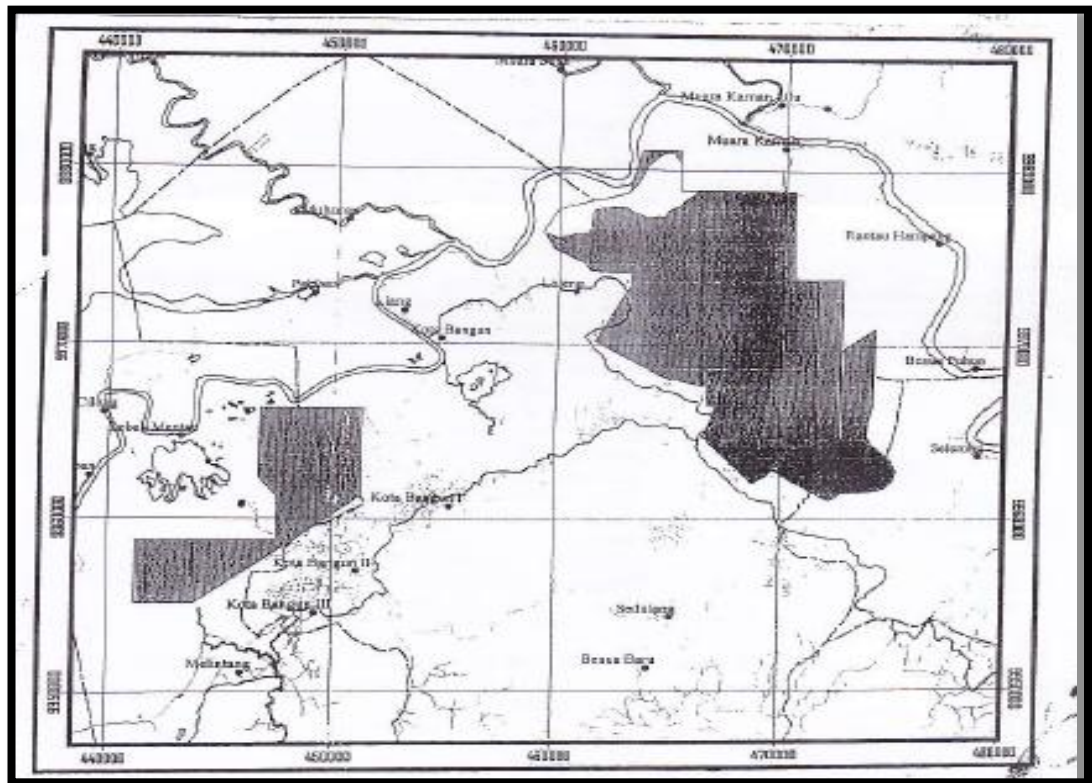


Picture 1. Location of PT. Prima Mitrajaya Mandiri in East Kalimantan Province.

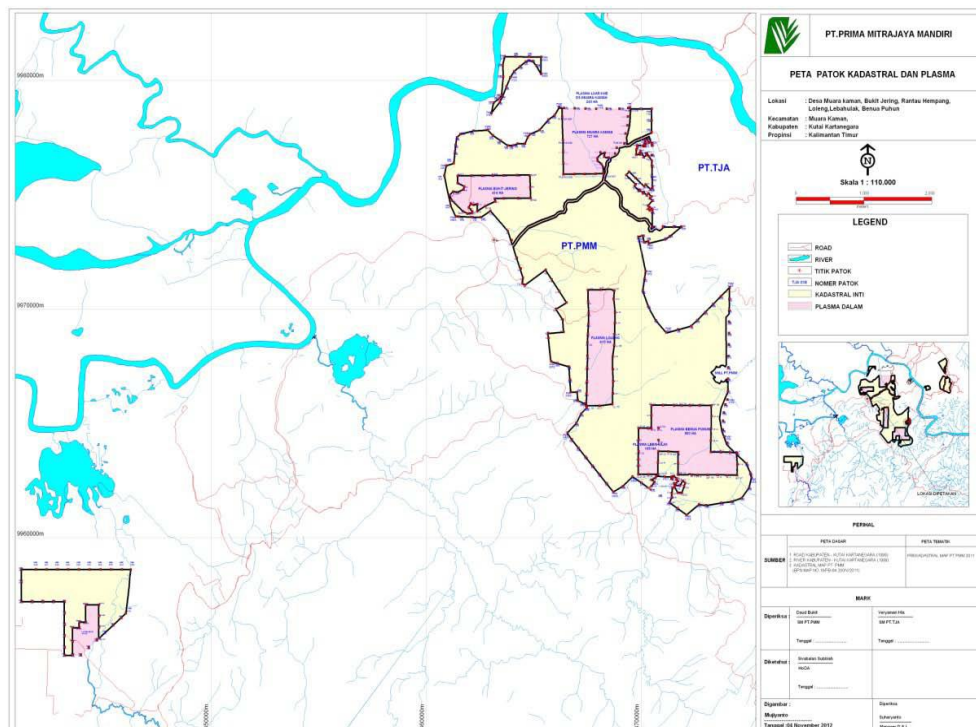


Picture 2. Location of PT. Prima Mitrajaya Mandiri in Kutai Kartanegara District.

RSPO

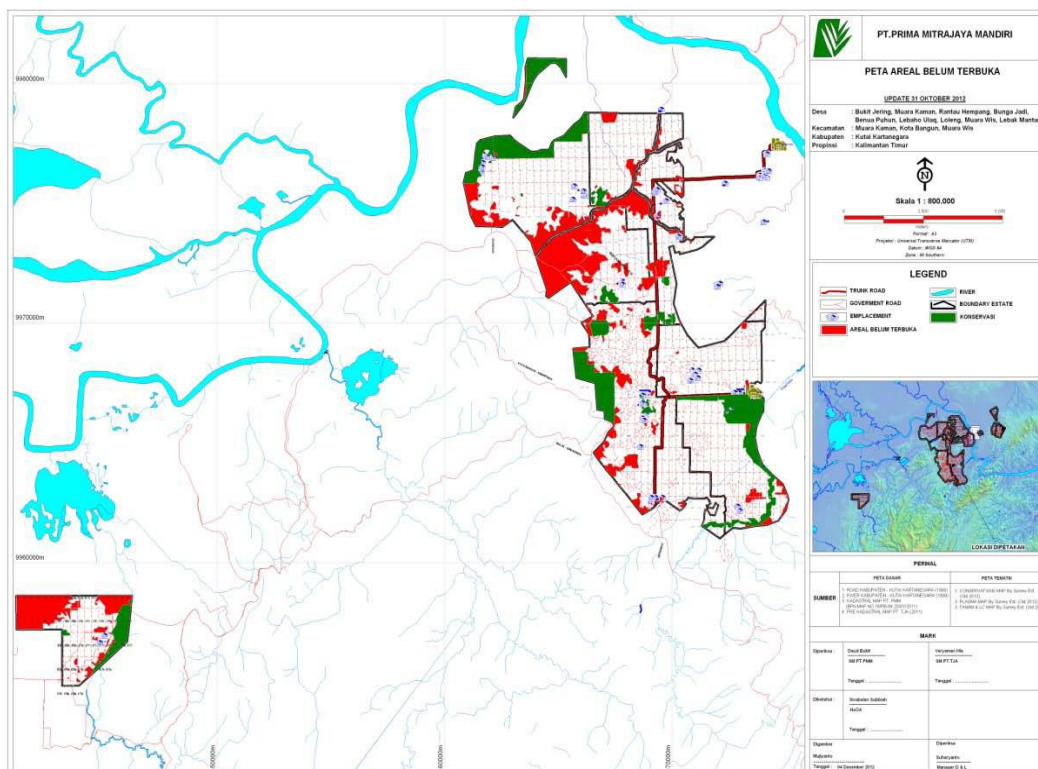


Picture 3. Land permit of PT. Prima Mitrajaya Mandiri



Picture 4. Cadastral Boundary PT. Prima Mitrajaya Mandiri

RSPO



Picture 5. Planting program PT. Prima Mitrajaya Mandiri in proposed Kadastral HGU

c. Area and time-plan for new plantings

PT. Prima Mitrajaya Mandiri development plan has incorporated the findings from SEIA (AMDAL), HCV Assessments and Social Impact Assessments by Aksenta as described above when implementing the operational plans. Management plans for HCV areas and management plans for handling social impacts have been drawn up.

The total area located in the Plantation Permit (Izin Usaha Perkebunan, IUP) of PT. Prima Mitrajaya Mandiri is $\pm 21,500$ ha and proposed for kadastral area (HGU) is only $\pm 12,899$ ha. The areas has been planted since 2007 is 9,424 ha (INTI: 6,698 ha and KKPA/Scheme Smallholders: 2,726 ha), proposed new planting areas is $\pm 2,021$ ha ($\pm 1,818$ ha INTI and ± 202 ha KKPA/Scheme Smallholders). The HCV management plan has been developed for these areas ($\pm 1,411$ ha) and unplatable areas around ± 44 ha. According the operational management of PT. Prima Mitrajaya Mandiri land development will commence in year 2013.

RSPO

Summary of Development Plan as described below:

Permit (Ha)	Proposed Kadastral (Ha)	Planted Todate (ha)			HCV Area (Ha)	Un plantable Area (Ha)	Balance Area to be Planted (Ha)		
		Inti	KKPA	Total			Inti	KKPA	Total
21,500	12,899	6,698	2,725	9,424	1,441	44	1,818	202	2,021

3. SEIA and HCV Management and Key Personal

a. Organisational information and contact persons.

Company Information and Contact Person	
Company name	PT Prima Mitrajaya mandiri
RSPO Membership No.	1-0027-06-000-00 (sebagai bagian dari MP Evans Group PLC)
Capital Status	Penanaman modal asing
Type of Business	Perkebunan kelapa sawit and pabrik
Address :Regional Office	Jl. Kadrie Oening Ruko No. 3 and 4, Kecamatan Samarinda Ulu, Samarinda, Kalimantan Timur, Indonesia.
Head Office	Gedung Graha Aktiva lantai 10, Suite 1001, Jl. HR Rasuna Said Blok X-1 Kav. 03, Kuningan Setuabudi, Jakarta Selatan (Telp. 62-21-5292 0388; Fax. 62-21-5929 0339)
Contact Person	Mr. Daud Bukit (Senior manager PT PMM) Mr. Hamdianas (RSPO Manager), Kaltim
Person Involved in Planning and Implementation	
	Mr. Sivabalan Subbiah (Head of Operation Agronomy Kaltim)
Stakeholders Involved during Implementation	
	Agriculture and Forestry Department District of Kutai Kartanegara Department of Environment District of Kutai Kartanegara District and Village Administration Heads (Camat, Kepala Desa, ketua BPD/LPM) Cooperatives (KKPA) management representatives and members Heads of local village norms and customs Company employees and contractors.

RSPO

b. Personnel involved in planning and implementation.

The implementation of the HCV and SIA management & monitoring plans in the field will be implemented by experienced personnel who possessed a high level of dedication of knowledge and special technical skills. RSPO Team with the assistance of Pemitra/Scheme team and Document & Legal Department stationed at the location, will provide support in these activities. The Estate Manager is directly responsible on the implementation of the plans of management and monitoring. In addition, the Senior Estate Manager is accountable in fulfilling of the requirements for the plan and as well as responsible in analyzing the input results from the monitoring plans. Head of Operation Agronomy (HoOA) and The President Director is accountable and responsible to ensure that the Overall Development Plan including the management of HCV and SEIA is implemented according to the time plan and budget.

c. Stakeholders to be involved

The Stakeholders' Consultation was held on 22th June 2012 in PT. PMM's office to provide opportunities for communication and sharing the informations/opinion/ suggestions.

This is also part of the process of free, prior and informed consent procedures to ensure that there is a balance in the social and environmental harmony in the development of the oil palm planting project between PT. Prima Mitrajaya Mandiri and the stakeholders

4. Summary of Management and Mitigation Plan

a. Summary of Management and Mitigation Plan (SEIA)

No	Description	Management Objective	Action Plan	PIC	Target
1	Land acquisition by Company	To ensure that the land acquisition process is in accordance with the principles of FPIC	Resocialization of SOPs on Land acquisition	Manager D&L	January 2013
2	KKPA Cooperatives	Fostering integrity and accountability in the KKPA Cooperatives	<ul style="list-style-type: none">- Conduct education and training to Management representatives and members of Cooperatives.- Assisting and guiding Cooperative	Pemitra Pemitra	2013 Continual

RSPO

			<p>management representatives in making transparent and credible financial statements.</p> <ul style="list-style-type: none"> - Continuously supervising Cooperatives to conduct Annual General Meetings of members as scheduled and required by law. - Engaging with the Department of Cooperatives to supervise the AGMs and monitoring the Cooperatives activities and the relevant reports needed to be submitted to the various Authorities. 	Pemitra	Continual
				Pemitra	Continual
3	CSR Programs	Prepare CSR programs according to the needs of the surrounding communities within the financial capabilities of the Company	Conduct consultations with local government and community leaders on the needs of the villages.	Estate Manager	2013
4	Internal issues	<ul style="list-style-type: none"> - Develop programs to improve Occupational Health and Safety (OSH) for employees. - Develop programs to improve the welfare of employees 	<ul style="list-style-type: none"> - Develop understanding and cooperation with the nearest Health Care Clinics. - Budgeting and planning for the construction of clinics in the estates. - Provide and improve creche. - Improve transportation facilities for schoolchildren 		<p>2012</p> <p>2013</p> <p>2012</p> <p>2012</p>

RSPO

b. Summary of Management and Mitigation Plan (HCV)

No	HCV Area	Ha	HCV Criteria	Management Program	Target	
1	BJE Blok A13-20, B13-15	110,00	HCV 4.1, HCV 4.2, HCV 4.3	Purpose: To protect biodiversity/conservation areas		
				Objective: To protect and maintain the buffers around the streams		
				Program: Management and monitoring action of HCV Area		
				Method: <ul style="list-style-type: none"> - Delineation of HCV areas on site according to results of HCV identification. - Conducting patrolling and monitoring of the conservation areas. - Socialization to staff, employees and the public on the presence of HCV and inform what actions are permitted and prohibited in the conservation areas. - Construction and improvement of signboards and notice boards/ warning signage around the HCV areas. - Improving the quality of the habitat in the conservation areas through enrichment by planting appropriate forest plants. - Ensure that conservation areas identified are not mistakenly cleared for planting. - Conduct fire patrols during dry seasons 		2012 2012 2012 2013 2012 and continual continual continual
				PIC: RSPO dept/ Estate Manager/Security		
2.	BJE Blok F 5-7, D7-20, C21-23, C26-28	309,80	HCV 4.1; HCV 4.2; and HCV 4.3	Purpose: To protect biodiversity/conservation areas		
				Objective: To protect and maintain the buffers around the streams that act as flood mitigation and natural firebreaks		
				Program: Management and monitoring action of HCV Area		
				Method: <ul style="list-style-type: none"> - Delineation of HCV areas on site according to results of HCV identification. - Conducting patrol ling and monitoring of the conservation areas. - Socialization to staff, employees and the public on the presence of HCV and inform what actions are permitted and prohibited in the conservation areas. - Construction and improvement of signboards and notice boards/ warning signage around the HCV areas. 		2012 2012 2012 2013

RSPO

				<ul style="list-style-type: none"> - Ensure that conservation areas identified are not mistakenly cleared for planting. - Conduct fire patrols during dry seasons. - Construct drain blocks during dry spells to retain water and reduce fire hazard. 	<p>continual</p> <p>continual</p> <p>2013</p> <p>continual</p>
				<p>PIC: RSPO dept/ Estate Manager/Security</p>	
3	BJE Blok D8, E7-8	11,80	HCV 4.1 and HCV 4.2	<p>Purpose: To protect biodiversity/conservation areas</p> <p>Objective: To protect and maintain the buffers around the streams that act as flood mitigation and natural firebreaks</p> <p>Program: Management and monitoring action of HCV Area</p> <p>Method:</p> <ul style="list-style-type: none"> - Delineation of HCV areas on site according to results of HCV identification. - Conducting patrolling and monitoring of the conservation areas. - Socialization to staff, employees and the public on the presence of HCV and inform what actions are permitted and prohibited in the conservation areas. - Construction and improvement of signboards and notice boards/ warning signage around the HCV areas. - Improving the quality of the habitat in the conservation areas through enrichment by planting appropriate forest plants. - Ensure that conservation areas identified are not mistakenly cleared for planting. - Conduct fire patrols during dry seasons. 	<p>2012</p> <p>2012</p> <p>2012</p> <p>2013</p> <p>2012 and continual</p> <p>continual</p> <p>continual</p>
				<p>PIC: RSPO dept/ Estate Manager/Security</p>	
4	BJE Blok D9	0,92	HCV 1.3; HCV 3; HCV 4.1; HCV 4.2	<p>Purpose: To protect biodiversity/conservation areas</p> <p>Objective: To protect and maintain the buffers around the streams that act as flood mitigation and natural firebreaks</p> <p>Program: Management and monitoring action of HCV Area</p> <p>Method:</p> <ul style="list-style-type: none"> - Delineation of HCV areas on site according to results of HCV identification. - Conducting patrol ling and monitoring of the conservation areas. - Socialization to staff, employees and the public on the presence of HCV and inform what actions are permitted and prohibited in the conservation areas. - Construction and improvement of 	<p>2012</p> <p>2012</p> <p>2012</p> <p>2013</p>

RSPO

				<p>signboards and notice boards/ warning signage around the HCV areas.</p> <ul style="list-style-type: none"> - Improving the quality of the habitat in the conservation areas through enrichment by planting appropriate forest plants. - Ensure that conservation areas identified are not mistakenly cleared for planting. - Conduct fire patrols during dry seasons. 	<p>2012 and continual</p> <p>continual</p> <p>continual</p>
				<p>PIC: RSPO dept/ Estate Manager/Security</p>	
5	BJE Blok E9	1,30	HCV 4.1	<p>Purpose: To protect biodiversity/conservation areas</p> <p>Objective: Maintain the source of water</p> <p>Program: Management and monitoring action of HCV area</p> <p>Method:</p> <ul style="list-style-type: none"> - Delineation of HCV areas on site according to results of HCV identification. - Conducting patrolling and monitoring of the conservation areas. - Socialization to staff, employees and the public on the presence of HCV and inform what actions are permitted and prohibited in the conservation areas. - Construction and improvement of signboards and notice boards/warning signage around the HCV areas. - Improving the quality of habitation in the conservation areas through enrichment by planting appropriate forest plants. - Ensure that conservation areas identified are not mistakenly cleared for planting. - Conduct fire patrols during dry seasons. 	<p>2012</p> <p>2012</p> <p>2012</p> <p>2013</p> <p>2012 and continual</p> <p>continual</p> <p>continual</p>
				<p>PIC: RSPO dept/ Estate Manager/Security</p>	
6	BJE Blok F9	0,06	HCV 6	<p>Purpose: To protect the importance of historical value</p> <p>Objective: To maintain the existence of the Banggeris tree (<i>Koompassia exelsa</i>)</p> <p>Program: Management and monitoring action of HCV Area</p> <p>Method:</p> <ul style="list-style-type: none"> - Ensuring that the Banggeris tree (<i>Koompassia exelsa</i>) is protected and not cut down or damaged. - Placing notice board near the tree. - Socialization to staff, employees and the public on the HCV area and inform what actions are permitted and prohibited. 	<p>2012</p> <p>2013</p> <p>2012</p>
				<p>PIC: RSPO dept/ Estate Manager/Security</p>	

RSPO

7	BJE Blok F14	1,30	HCV 1.3	Purpose: To Protection of biodiversity/conservation area	
				Objective: Protect the habitat for species with limited distribution	
				Program: Management and monitoring action of HCV	
				Method: - Delineation of HCV areas on site according to results of HCV identification. - Conducting patrolling and monitoring of the conservation areas. - Socialization to staff, employees and the public on the presence of HCV and inform what actions are permitted and prohibited in the conservation areas. - Construction and improvement of signboards and notice boards/ warning signage around the HCV areas. - Improving the quality of the habitat in the conservation areas through enrichment by planting appropriate forest plants.	2012 2012 2012 2013 2012
				PIC: RSPO dept/ Estate Manager/Security	
8	BJE Blok J24-25	36,20	HCV 1.3; HCV 1.4; HCV 4.1; and HCV 4.2	Purpose: Protection of biodiversity/conservation areas	
				Objective: Protect the habitat for species with limited distribution and as a shelter for transient species .The area also has importance for sedimentation and erosion control.	
				Program: Management and monitoring action of HCV Area	
				Method: - Delineation of HCV areas on site according to results of HCV identification. - Conducting patrolling and monitoring of the conservation areas. - Socialization to staff, employees and the public on the presence of HCV and inform what actions are permitted and prohibited in the conservation areas. - Construction and improvement of signboards and notice boards/ warning signage around the HCV areas. - Improving the quality of habitation in the conservation areas through enrichment by planting appropriate forest plants. - Ensure that conservation areas identified are not mistakenly cleared for planting. - Decrease the possibility of soil erosion by planting Vetiver grass on the slopes around this area.	2012 2012 2012 2013 2012 and continual continual continual
				PIC: RSPO dept/ Estate Manager/Security	

RSPO

9	KHE Blok F24-25	34,25	HCV 1.3	Purpose: Protection of biodiversity/conservation areas		
				Objective: Protect the habitat for species with limited distribution		
				Program: Management and monitoring action of HCV Area		
				Method: <ul style="list-style-type: none"> - Delineation of HCV areas on site according to results of HCV identification. - Conducting patrolling and monitoring of the conservation areas. - Socialization to staff, employees and the public on the presence of HCV and inform what actions are permitted and prohibited in the conservation areas. - Construction and improvement of signboards and notice boards/ warning signage around the HCV areas. - Improving the quality of the habitat in the conservation areas through enrichment by planting appropriate forest plants. - Ensure that conservation areas identified are not mistakenly cleared for planting 		2012 2012 2012 2013 2012 and continual Continual
				PIC: RSPO dept/ Estate Manager/Security		
10	KHE Blok K33-K35	28,41	HCV 1.4; HCV 4.1; and HCV 4.2	Purpose: Protection of biodiversity/conservation areas		
				Objective: Protect the habitat for species with limited distribution and as a shelter for transient species. The area also has importance for sedimentation and erosion control.		
				Program: Management and monitoring action of HCV Area		
				Method: <ul style="list-style-type: none"> - Delineation of HCV areas on site according to results of HCV identification. - Conducting patrolling and monitoring of the conservation areas. - Socialization to staff, employees and the public on the presence of HCV and inform what actions are permitted and prohibited in the conservation areas. - Construction and improvement of signboards and notice boards/ warning signage around the HCV areas. - Improving the quality of the habitat in the conservation areas through enrichment by planting appropriate forest plants. - Ensure that conservation areas identified are not mistakenly cleared for planting. - Decrease the possibility of soil erosion by planting Vetiver grass on the slopes around 		2012 2012 2012 2013 2012 and continual Continual Continual

RSPO

				this area.	
				PIC: RSPO dept/ Estate Manager/Security	
11	MWE Blok H17, I15-I17, J13-J15, and K13-K14	128,38	HCV 1.2; HCV 1.4; HCV 4.1; and HCV 4.2; and HCV 4.3	Purpose: To Protection of biodiversity/conservation area	
				Objective: Protection of rare, threatened or enandgered species and shelter for transient species The area also has importance for erosion and sedimentation control	
				Program: Management and monitoring action of HCV Area	
				Method: - Delineation of HCV areas on site according to results of HCV identification.	2012
				- Conducting patrolling and monitoring of the conservation areas.	2012
				- Socialization to staff, employees and the public on the presence of HCV and inform what actions are permitted and prohibited in the conservation areas.	2012
				- Construction and improvement of signboards and notice boards/ warning signage around the HCV areas.	2013
				- Improving the quality of the habitat in the conservation areas through enrichment by planting appropriate forest plants.	2013
				- Prepare boundary signage of riparian reserve (50 m) on both sides of the Keham River.	2012
				- Prepare warning signage prohibiting chemical spraying activities in this area.	2012
				- Prepare a mechanism to resolve wildlife conflict and to socialize this to all staff, employees and the surrounding community	Continual
				PIC: RSPO dept/ Estate Manager/Security	
12	MWE Blok J8	6,55	HCV 1.2	Purpose: To Protection of biodiversity/conservation area	
				Objective: Protection of rare, threatened or enandgered species	
				Program: Management and monitoring action of HCV Area	
				Method: - Delineation of HCV areas on site according to results of HCV identification.	2012
				- Conducting patrolling and monitoring of the conservation areas.	2012
				- Socialization to staff, employees and the public on the presence of HCV and inform what actions are permitted and prohibited in the conservation areas.	2012
				- Construction and improvement of	2013

RSPO

				<p>signboards and notice boards/ warning signage around the HCV areas.</p> <ul style="list-style-type: none"> - Improving the quality of habitation in the conservation areas through enrichment by planting appropriate forest plants. - Prepare a mechanism to resolve wildlife conflict and to socialize this to all staff, employees and the surrounding community 	2013
				<p>PIC: RSPO dept/ Estate Manager/Security</p>	
13	LLE Blok K/L 23-26, K31, K/L 32, M21-23, N21-26, O24-26, N/O 31, O31-32	334,65	HCV 1.3	<p>Purpose: Protection of biodiversity/conservation areas</p> <p>Objective: Protect the habitat for species with limited distribution</p> <p>Program: Management and monitoring action of HCV Area</p> <p>Method:</p> <ul style="list-style-type: none"> - Delineation of HCV areas on site according to results of HCV identification. - Conducting patrolling and monitoring of the conservation areas. - Socialization to staff, employees and the public on the presence of HCV and inform what actions are permitted and prohibited in the conservation areas. - Construction and improvement of signboards and notice boards/ warning signage around the HCV areas. - Improving the quality of the habitat in the conservation areas through enrichment by planting appropriate forest plants. 	2012
					2012
					2012
					2013
					2012
				<p>PIC: RSPO dept/ Estate Manager/Security</p>	
14	LLE Blok T 40-42	17,47	HCV 1.3 and HCV 4.2	<p>Purpose: Protection of biodiversity/conservation areas</p> <p>Objective: Protect the habitat for species with limited distribution The area also has importance for erosion and sedimentation control</p> <p>Program: Management and monitoring action of HCV Area</p> <p>Method:</p> <ul style="list-style-type: none"> - Delineation of HCV areas on site according to results of HCV identification. - Conducting patrolling and monitoring of the conservation areas. - Socialization to staff, employees and the public on the presence of HCV and inform what actions are permitted and prohibited in the conservation areas. - Construction and improvement of signboards and notice boards/ warning 	2012
					2012
					2012
					2013

RSPO

				<p>signage around the HCV areas.</p> <ul style="list-style-type: none"> - Improving the quality of the habitat in the conservation areas through enrichment by planting appropriate forest plants. - Prepare boundary signage of riparian reserve (50 m) on both sides of the Semilis River. - Prepare warning signage prohibiting chemical spraying activities in this area. 	2013
					2012
					2012
				PIC: RSPO dept/ Estate Manager/Security	
15	BPE Blok O35-48, P45-47, Q45-48, R48-50	389,74	HCV 1.2; HCV 1.3; and HCV 4.2	<p>Purpose: Protection of biodiversity/conservation area</p> <p>Objective: Protection of rare, threatened or enangered species and habitat for species with limited distribution . The area also has importance for erosion and sedimentation control</p> <p>Program: Management and monitoring action of HCV Area</p> <p>Method:</p> <ul style="list-style-type: none"> - Delineation of HCV areas on site according to results of HCV identification. - Conducting patrolling and monitoring of the conservation areas. - Socialization to staff, employees and the public on the presence of HCV and inform what actions are permitted and prohibited in the conservation areas. - Construction and improvement of signboards and notice boards/ warning signage around the HCV areas. - Improving the quality of the habitat in the conservation areas through enrichment by planting appropriate forest plants. - Prepare boundary signage of riparian reserve (50 m) on both sides of the Semilis River. - Prepare warning signage prohibiting chemical spraying activities in this area 	
					2012
					2012
					2012
					2013
					2013
					2012
					2012
				PIC: RSPO dept/ Estate Manager/Security	
	Total	1.410,70			

RSPO

5. Internal Responsibility

This Summary of Planning and Management has been approved by the management of PT Prima Mitrajaya Mandiri.



Daud Bukit
Senior Manager



Sivabalan Subbiah
Head of Operation Agronomy



K Chandra Sekaran
President Director