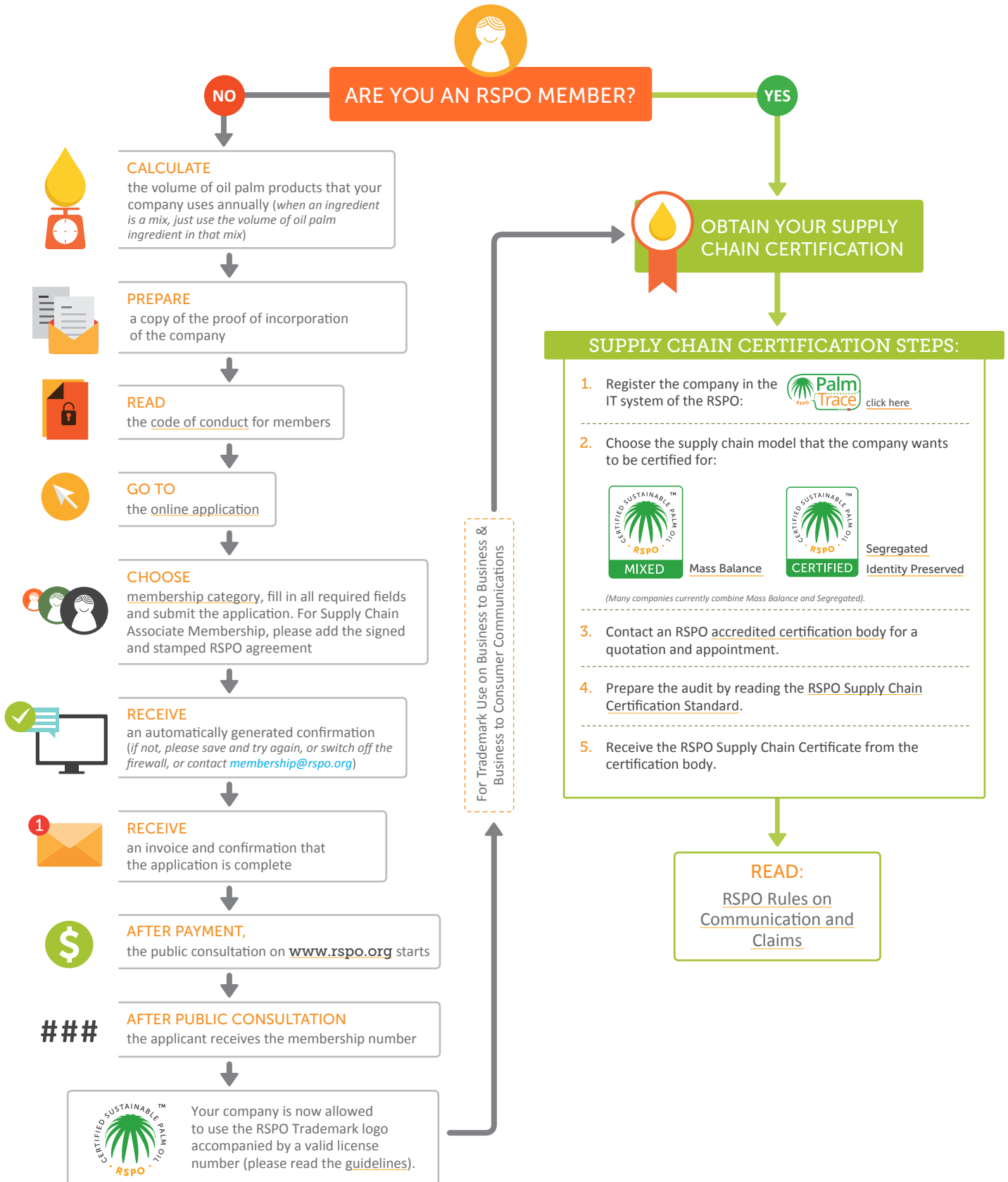


Use & Claim of RSPO Certified Sustainable Oil Palm Products

This flowchart is designed for companies that use oil palm products and would like to start using – and claiming the use of – sustainable products. Please use this flowchart to determine what the requirements are.



About Supply Chain Models:



Mass Balance

<https://www.rspo.org/infographics/scc-mass-balance.jpg>



Segregated

<https://www.rspo.org/infographics/scc-segregated.jpg>

Identity Preserved

<https://www.rspo.org/infographics/scc-identity-preserved.jpg>



Book and Claim

<https://palmtrace.rspo.org/web/rspo/become-member>

Additional Information:

Code of Conduct:

<http://www.rspo.org/resources/key-documents/membership>

Online application form:

<http://www.rspo.org/members/apply>

RSPO Membership Type:

<http://www.rspo.org/members/categories>

RSPO Logo Guidelines:

<http://www.rspo.org/resources/supplementary-materials/communications>



RSPO PalmTrace

<https://palmtrace.rspo.org/>

RSPO Accredited Certification Body:

<http://www.rspo.org/certification/bodies>

RSPO Supply Chain Certification Standard:

<http://www.rspo.org/resources/key-documents/certification>

RSPO Rules on Communication and Claims:

<http://www.rspo.org/resources/supplementary-materials/communications>

Have a question? askRSPO

<https://askrspo.custhelp.com/app/answers/list>

CONTACT US

For membership related questions:

membership@rspo.org

For PalmTrace related questions:

palmoil.support@utz.org

For supply chain certification related questions:

certification@rspo.org

For trademark related questions:

trademark@rspo.org

www.rspo.org