

Roundtable on Sustainable Palm Oil (RSPO)  
Indian National Interpretation Working Group (INNI-WG)

**INDIA NATIONAL INTERPRETATION (INNI) 2019 OF THE  
RSPO PRINCIPLES AND CRITERIA 2018 FOR  
SUSTAINABLE PALM OIL PRODUCTION**

*Endorsed by the RSPO Board of Governors on 7th November 2019*





## PREAMBLE

The Indian National Interpretation 2019 is based on the generic document of Principles and Criteria for Sustainable Palm Oil 2018 (P&C 2018), which will be used as a standard for palm oil mill and plantation attaining certification under RSPO scheme.

The Indian National Interpretation RSPO Principle & Criteria 2019 Document was prepared by India National Interpretation Working Group having representations from various stake holders/Users for Palm Oil in India like Palm Oil Millers, Growers (Farmer Association), Retailers, Consumer Goods Manufacturers, Processors & Palm Oil Traders, Banks & Investors, Social Non Governmental Organization, Environmental NGO, Technical experts from State Horticultural Department & Agricultural Institutes and industry thought leaders and observed by RSPO Secretariat.

This document was produced after two rounds of comprehensive discussions within the India NIWG & all the Principle, Criteria & all Indicators under each criterion were discussed in detail as per the applicability of them in Indian context. After the discussion the NIWG members were unanimously agreed to incorporate some changes to the existing generic Principle & Criteria 2018 and after that this document was made available for Public Consultation for two months (14th June 2019 to 13th Aug 2019) on RSPO website. Relevant stake holders of Palm oil in India including the Government departments were informed through emails and phone calls. Once the public consultation period is over the document is reviewed again by the NIWG members and final draft is updated.

Additional Notes/Amendments for the Indian National Interpretation:

#### **A. Modifications/ Proposed Indicators**

1. Indicator 1.1.1 (Existing): Management documents that are specified in the RSPO P&C are made publicly available.  
Indicator 1.1.1 (**NIWG Proposed**): Management documents that are specified in the RSPO P&C are made publicly available **upon request**.
2. Indicator 2.2.1 (Existing): All contracts, including those for FFB supply, contain specific clauses on meeting applicable legal requirements, and this can be demonstrated by the third party.  
Indicator 2.2.1 (**Proposed**): All contracts, including those for FFB supply, contain specific clauses on meeting applicable legal requirements, and this can be demonstrated by the third party **and governed by the local law of the state**.
3. Indicator 6.2.1 (Existing): Applicable labour laws, union and/or other collective agreements and documentation of pay and conditions are available to the workers in national languages and explained to them in language they understand, and is demonstrably Implemented.  
Indicator 6.2.1 (**Proposed**) : Applicable labour laws, union and/or other collective agreements and documentation of pay and conditions are available to the workers in national languages (**English and/or Local state Language**) and explained to them in language they understand, and is demonstrably Implemented.

4. Indicator 6.3.1 (Existing): A published statement recognizing freedom of association and right to collective bargaining in national languages is available and is explained to all workers, in languages that they understand, and is demonstrably Implemented.  
Indicator 6.3.1 **(Proposed)**: A published statement recognizing freedom of association and right to collective bargaining in national languages **(English and/or Local state Language)** is available and is explained to all workers, in language that they understand, and is demonstrably implemented.
  5. Indicator 6.7.4 (Existing): All workers are provided with medical care and covered by accident insurance. Costs incurred from work- related incidents leading to injury or sicknesses are covered in accordance with national law or by the unit of certification where national law does not offer protection.  
Indicator 6.7.4 **(Proposed)**: All workers are provided with medical care and covered by accident insurance. Costs incurred from work- related incidents leading to injury or sicknesses are covered in accordance with national law or by the unit of certification where national law does not offer protection. **For temporary workers who cannot be covered under regular insurance, access to medical care to be provided.**
- B. Annex 1 of this document provides revised definitions as per the context of India for**
1. Small Holder  
Family Farm.
- C. Annex 2 of this National Interpretation provides the guidance notes for**
1. Criteria 2.2 - All contractors providing operational services and supplying labour, and Fresh Fruit Bunch (FFB) suppliers, comply with legal requirements.
  2. Criteria 2.3 - All FFB supplies from outside the unit of certification are from legal sources.
  3. Criteria 4.6 - Indicator 4.6.3 equal opportunities are provided to both men and women to hold land titles for scheme small holdings.
  4. Criteria 6.7 - Indicator 6.7.4 clarification added regarding Insurance of Temporary worker.
  5. Criteria 7.2 - Indicator 7.2.4 There is no prophylactic use of pesticides, unless in exceptional circumstances, as identified in national best practice guidelines.
- D. Annex 3 - key international laws and conventions applicable to the production of palm oil which with the ratification/signatory status for India.**
- E. Annex 4 - Implementation procedure for Indicator 2.3.2**
- F. Annex 5 - Transition from HCV to HCV–HCS Assessment**
- G. Annex 6 - Related laws, regulations & guidelines used in Indian palm oil industry in relation to respective Principles and Criteria**

# TABLE OF CONTENTS



<b>Preamble</b> .....	
1. Scope.....	7
2. RSPO Vision and Theory of Change.....	9
3. Outcome Focus .....	12
4. Structure of the RSPO P&C .....	13
<b>Impact Goal –</b>	
<b>Prosperity: Competitive, resilient and sustainable sector.....</b>	<b>17</b>
Principle 1: Behave ethically and transparently.....	18
Principle 2: Operate legally and respect rights .....	19
Principle 3: Optimize productivity, efficiency, positive impacts and resilience.....	21
Supply chain requirements for mills .....	24
<b>Impact Goal –</b>	
<b>People: Sustainable livelihoods and poverty reduction .....</b>	<b>33</b>
Principle 4: Respect community and human rights and deliver benefits .....	34
Principle 5: Support smallholder inclusion .....	40
Principle 6: Respect workers' rights and conditions .....	42
<b>Impact Goal –</b>	
<b>Planet: Conserved, protected and enhanced ecosystems that provide for the next generation .....</b>	<b>50</b>
Principle 7: Protect, conserve and enhance ecosystems and the environment .....	51
<b>Annex 1 – Definitions .....</b>	<b>58</b>
<b>Annex 2 – Guidance .....</b>	<b>78</b>
<b>Annex 3 – Key international laws and conventions applicable to the production of palm oil .....</b>	<b>108</b>
<b>Annex 4 – Implementation procedure for Indicator 2.3.2 .....</b>	<b>126</b>
<b>Annex 5 – Transition from HCV to HCV–HCS Assessment .....</b>	<b>128</b>
<b>Annex 6 – Related laws, regulations &amp; guidelines used in Indian palm oil industry in relation to respective Principles and Criteria .....</b>	<b>129</b>

Acronym	Meaning
AFI	Accountability Framework Initiative
ALS	Assessor Licensing Scheme
ASA	Annual Surveillance Assessments
ASEAN	Association of Southeast Asian Nations
BHCVWG	Biodiversity & High Conservation Value Working Group
BMPs	Best Management Practices
BOD	Biochemical Oxygen Demand
BoG	Board of Governors
CABI	Centre for Agriculture and Biosciences International
CAT	Convention Against Torture
CB	Certification Body
CBA	Collective Bargaining Agreement
CBD	Convention on Biological Diversity
CEDAW	Convention Elimination of All Forms of Discrimination Against Women
CIBRC	Central Insecticides Board and Registration Committee
CPED	Convention Protection Enforced Disappearance
CPO	Crude Palm Oil
CRC	Convention Rights of the Child

Acronym	Meaning
CRPD	Convention Rights of Persons with Disabilities
CSO	Civil Society Organisation
DLW	Decent Living Wage
DLW	decent living wages
EFB	Empty Fruit Bunches
FAO	Food and Agriculture Organisation
FFB	Fresh Fruit Bunch
FPIC	Free, Prior and Informed Consent
FSC	Forest Stewardship Council
FSSAI	Food Safety & Standards Authority of India
GA	General Assembly
GEAC	Genetically Engineering Approval Committee
GHG	Greenhouse Gas
GLWC	Global Living Wage Coalition
H&S	Health and Safety
HCS	High Carbon Stock
HCSA	High Carbon Stock Approach
HCV	High Conservation Value
HCVRN	High Conservation Value Resource Network

Acronym	Meaning
HFCC	High Forest Cover Country
HFCL	High Forest Cover Landscape
HGU	Hak Guna Usaha
HRC	Human Rights Commission
HRD	Human Rights Defender
ICCPR	International Covenant on Civil & Political Rights
ICMRW	International Convention Rights of All Migrant Workers
ICS	Internal Control System
IDS	Institute of Development Studies
IFC	International Finance Corporation
IFL	Intact Forest Landscape
ILO	International Labour Organization
IP	Identity Preserved
IPCC	Intergovernmental Panel on Climate Change
IPM	Integrated Pest Management
ISO	International Organization for Standardization
IUCN	International Union for Conservation of Nature
JCC	Joint Consultative Committee
KBA	Key Biodiversity Area

Acronym	Meaning
KPI	Key Performance Indicator
LTA	Lost Time Accident
LUCA	Land Use Change Analysis
MB	Mass Balance
NDJSG	No Deforestation Joint Steering Group
NGO	Non-Governmental Organisation
NI	National Interpretation
OER	Oil Extraction Rate
P&C	RSPO Principles and Criteria (i.e. this document)
PK	Palm Kernel
PLWG	Peatland Working Group
PO	Palm Oil
POME	Palm Oil Mill Effluent
PPE	Personal Protective Equipment
PPVFR	Protection of Plant Varieties and Farmers' Rights
QMS	Quality Management System
RaCP	Remediation and Compensation Procedure
REDD	Reducing Emissions from Deforestation and Forest
RSPO	Roundtable on Sustainable Palm Oil

Acronym	Meaning
RTE	Rare, Threatened or Endangered
SCCS	RSPO Supply Chain Certification Standard
SDG	Sustainable Development Goal
SEIA	Social and Environmental Impact Assessment
SHIG	Smallholder Interim Group
SLAPP	Strategic Lawsuits against Public Participation
SOP	Standard Operating Procedure
ToC	Theory of Change
UN	United Nations Degradation



## 1. SCOPE

The RSPO Principles and Criteria (RSPO P&C) is applicable for sustainable palm oil production worldwide. The RSPO P&C cover the most significant environmental and social impacts of palm oil production and the immediate inputs to production, such as seed, chemicals and water, and social impacts related to on-farm labour and community relations.

The RSPO P&C apply to all production level companies, i.e. all mills, who do not fall under the definition of independent mill as outlined in the RSPO SCC standard; and to all growers, who do not meet the definition of Independent Smallholder or the applicability requirements as outlined in the RSPO Independent Smallholder Standard (under development as of September 2018 with finalization expected in 2019) and therefore cannot apply the RSPO Smallholder Standard. These are referred to as the unit of certification throughout this document.

The unit of certification is responsible for the certification of related Scheme Smallholders and outgrowers within three years of obtaining its own certificate (see section 4.1.3 in RSPO Certification Systems 2017). Guidance for implementation of the RSPO P&C 2018 for Scheme Smallholders and outgrowers will be developed.

The RSPO P&C apply to existing plantings, as well as planning, siting, development, expansion and new plantings.

Where RSPO standards differ from local laws, the higher/stricter of the two shall always prevail and NIs are required to develop a list of applicable laws (see section 9 in RSPO SOP for Standard Setting 2017).

Compliance with the RSPO P&C and all requirements as outlined in associated documents is required in order for certification to be awarded. Any non-conformities may result in suspension or loss of certification (see section 4.9 in RSPO Certification Systems 2017). Compliance must be demonstrated with the normative part of the P&C, i.e. the Principles, Criteria and Indicators. Non-conformities are raised at Indicator-level by auditors. The informative part (i.e. Annex 2 Guidance) is there to help with implementation of Indicators, but is not normative, nor can non-conformities be raised against this section.

Team	Explanation	RSPO Standard Setting document	Category
<b>Principle</b>	Fundamental statements about a desired outcome	A fundamental statement about a desired outcome, often providing greater detail about the objectives.	Normative
<b>Criteria</b>	What implementation of the Principle looks like – the preconditions or means of judging whether or not a Principle has been fulfilled	The conditions that need to be met in order to fulfil a Principle. Criteria add meaning and operability to a Principle without themselves being direct measures of performance.	Normative
<b>Indicator</b>	Variable to measure the implementation (positive or negative)	The measurable states, which allow the assessment of whether or not associated Criteria, are being met. Indicators convey a single, meaningful message or piece of information.	Normative
<b>Guidance</b>	Additional information that assists with the understanding, implementation and auditing of the requirement (i.e. the Indicator)	Guidance consists of useful information to help the unit of certification and auditor understand what the Criterion and/or Indicators mean in practice, to indicate good practice, and practices that shall be followed.	Informative
<b>Procedural Note</b>	Exceptional measure to allow mention of pending developments	A note in the standard only to be used where a methodology or element of the standard is still under development to clarify terms, conditions and procedure prior to the said methodology or element being finalised.	Informative

### Role of Definitions

Throughout the standard, some terms carry a specific RSPO definition, which is provided in Annex 1

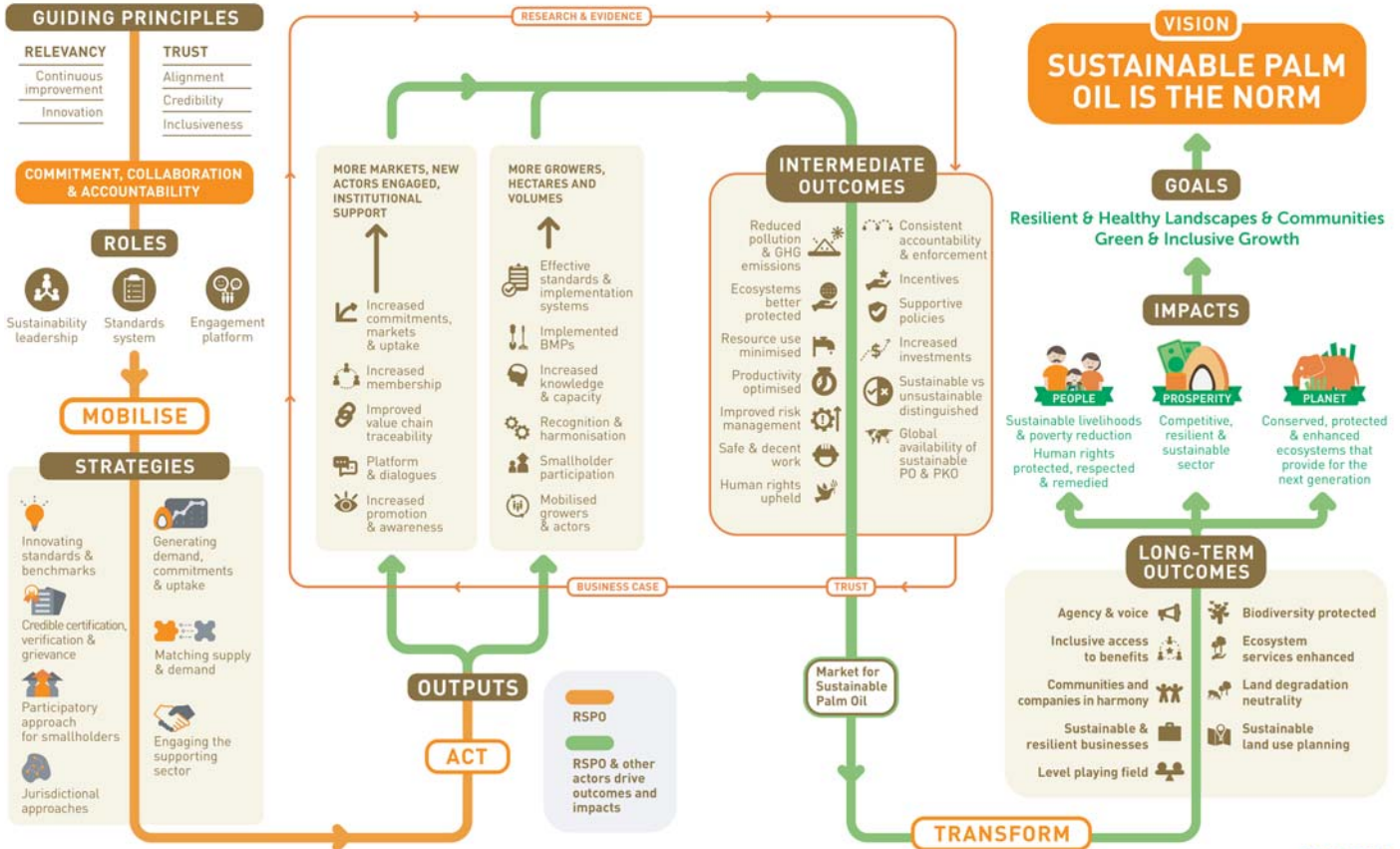
– Definitions section of this standard. These definitions are binding elements of Criteria and

## 2. RSPO VISION AND THEORY OF CHANGE



The RSPO Theory of Change (ToC) is a roadmap that demonstrates how RSPO will achieve its vision of making sustainable palm oil the norm. With the support of its members, partners and other actors, RSPO will implement key strategies and activities to trigger the transformation of the palm oil sector. These strategies are intended to bring about direct outputs in the form of increased adoption of the RSPO standards, greater transparency and inclusivity in the RSPO system, increased market uptake of sustainable palm oil, and an improved enabling environment. Over time, these outputs will lead to outcomes that are expected to improve the quality of life of oil palm farmers, create a more prosperous palm oil industry, and enable us to better conserve our planet and its resources. When the ToC is fully realised, it delivers change where it matters most – on the ground; a space where oil palm, the environment, and local communities can co-exist in harmony. It also provides a framework to monitor, evaluate and report on the effects of applying the RSPO P&C. More details on the RSPO ToC are available here: <https://rspo.org/about/impacts/theory-of-change>.

# THEORY OF CHANGE RSPO'S ROADMAP FOR SUSTAINABLE PALM OIL





Effective implementation and more growers' uptake of the P&C lead to the intermediate outcomes:

- Resource use minimization (soil, water, energy), input use reduction – reduced costs
- Reduced pollution (water, air, greenhouse gas (GHG))
- Improved risk management – management plans and assessments  
Ecosystems better protected
- Productivity optimised
- Land and use rights respected
- Safe and decent work for all community members

The process for change at RSPO is characterized by a progression of “**Mobilise, Act and Transform**”. This is the backbone of the RSPO ToC and underpinned by the concept of shared responsibility and accountability for results.

**Commitment:** All the actors commit to their contribution to transforming markets.

**Collaboration:** Recognizing the need to work together and making that happen: transformation of markets cannot happen without collaboration.

**Accountability:** Commitment and collaboration are to be fulfilled with a shared responsibility for impact. The expectation of partners and members is that they commit to participate and there is mutual and agreed accountability for results.

### 3. OUTCOME FOCUS

The core objectives of the 2018 RSPO P&C review include:

- Incorporating elements of impacts
- Making it more relevant and practical, particularly by making it metricated (measurable)
- Incorporating elements of impacts as prescribed by the ToC

It is important to keep in mind that it is simply not feasible or meaningful to propose indicator level, specific measurable outcomes because of many technical and political challenges. From research and experience with other standards these include:

- Attribution – achieving outcomes is based on a wide range of actions
- and context, often out of the control of the grower (weather, market forces, pests)
- Defining globally relevant outcomes
- Favour larger, more resourced growers potentially demotivating small and medium size growers
- Costs and burden for data reporting systems and management

However, outcome focused P&C can still be achieved, by showing very explicitly the links between the set of Criteria and intended outcomes. Furthermore, a requirement for reporting to RSPO has been included into the Management Principle under Criterion 3.2 for continuous improvement.

The selection criteria for these metrics

- Value added to growers
- Link to P&C requirements Key ToC outcomes
- Those already required for measuring, monitoring and/or reporting

## 4. STRUCTURE OF THE RSPO P&C

The RSPO P&C are organized into three impact areas according to the RSPO ToC.



**Impact Goal PROSPERITY:**  
Competitive, resilient and sustainable sector

- Principle 1. **Behave ethically and transparently**
- Principle 2. **Operate legally and respect rights**
- Principle 3. **Optimise productivity, efficiency, positive impacts and resilience**



**Impact Goal PEOPLE:**  
Sustainable livelihoods and poverty reduction

- Principle 4. **Respect community and human rights and deliver benefits**
- Principle 5. **Support smallholder inclusion**
- Principle 6. **Respect workers' rights and conditions**



**Impact Goal PLANET:**  
Conserved, protected and enhanced ecosystems that provide for the next generation

- Principle 7. **Protect, conserve and enhance ecosystems and the environment**

Impact Area ToC	Objectives ToC	Principle of Theme
<p><b>PROSPERITY</b></p> <p>Impact Goal: Competitive, resilient and sustainable sector</p>	<p>A sustainable, competitive, and resilient palm oil sector ensures long-term viability of the entire supply chain and shared benefits for both private sector as well as the livelihoods of communities where oil palm is grown. Effective planning and management system address economic viability, environmental and social compliance and risk, establishes procedures and systems for ensuring conformance to the RSPO P&amp;C, and supports continuous improvement toward sustainable palm oil.</p>	<ol style="list-style-type: none"> <li>1. Behave ethically and transparently</li> <li>2. Operate legally and respect rights</li> <li>3. Optimise productivity, efficiency, positive impacts and resilience</li> </ol>
<p><b>PEOPLE</b></p> <p>Impact Goal: Sustainable livelihoods and poverty reduction</p>	<p>Human rights protected, respected and remedied. The palm oil sector contributes to reducing poverty and palm oil production is a source of sustainable livelihoods. Human rights are respected. People participate in processes that affect them with shared access and benefits. Everyone engaged in palm oil production has equal opportunities to fulfill their potential in work and community with dignity and equality and in a healthy working and living environment.</p>	<ol style="list-style-type: none"> <li>4. Respect community and human rights and deliver benefits</li> <li>5. Support smallholder inclusion</li> <li>6. Respect workers' rights and conditions</li> </ol>
<p><b>PLANET</b></p> <p>Impact Goal: Conserved, protected and enhanced ecosystems that provide for the next generation</p>	<p>Impact Goal: Conserved, protected, and enhanced ecosystems that enhance provide for the next generation. Ecosystems and their services are protected, restored, and resilient, including through sustainable consumption and production and sustainable management of natural resources [sustainably manage forests, combat desertification, halt and reverse and degradation, halt biodiversity loss (SDG 15)]. Climate change is addressed through continuous GHG reductions and air and water pollution are controlled</p>	<ol style="list-style-type: none"> <li>7. Protect, conserve and ecosystems and the environment</li> </ol>



## 4. STRUCTURE OF THE RSPO P&C



	Criteria Topic	2018 P&C Criterion No	2013 P&C Criterion No
<b>PROSPERITY</b>	<b>1.</b> Information and public Communication and Commitment to ethical conduct	1.1	1.1 / 1.2 / 6.10
		1.1	6.2
		1.2	1.3 / 6.10
	<b>2.</b> Legal compliance Third party contractors Third party FBB legally	2.1	2.1 / 6.10
		2.2	n.a.
		2.3	n.a.
	<b>3.</b> Long term plan and economic Continuous Improvement & Standard Operating SEIA and Plans System for managing human Occupational Health and Safety Training	3.1	3.1
		3.2	8.1
		3.3	4.1
		3.4	5.1 / 6.1 / 7.1
		3.5	n.a.
	3.6	4.7 (part)	
	3.7	4.8	
<b>PEOPLE</b>	<b>4.</b> Human Rights Complaints and Grievances Contribution to local sustainable Land use & FPIC Land Use : Compensation Land Use : Conflict	4.1	6.13
		4.2	6.3
		4.3	6.11 (part)
		4.4 & 4.5	2.3 / 7.5
	4.6 & 4.7	6.4 / 7.6	
	4.8	2.2	
	<b>5.</b> Improved SH livelihoods Pay and working	5.1	6.1
		5.2	6.11 (part)
	<b>6.</b> No discrimination Pay and working Freedom of association No child labour No harassment No forced or trafficked Safe working	6.1	6.8
		6.2	6
		6.3	6.6
		6.4	6.7
		6.5	6.9
6.6		6.12	
6.7		4.7 (part)	
<b>PLANET</b>	<b>7.</b> Effective Integrated Pest Management Pesticide Use Waste management Soil health fertility Soil conservation (erosion and Soil survey and topographic Peat Water quality and Energy Use Pollution and GHGs Fire HCV and HCS	7.1	4.5
		7.2	4.6
		7.3	5.3
		7.4	4.2 / 7.2
		7.5	4.3 & 7.4 (parts)
		7.6	4.3 & 7.2
		7.7	4.3 & 7.4 (parts)
		7.8	4.4
		7.9	5.4
		7.10	5.6 / 7.8
7.11	5.5 / 7.7		
7.12	5.5 / 7.3		

## Link to Theory of Change - Intermediate outcomes

Improved Risk Management  
 Improved Risk Management  
 Improved Risk Management  
 Improved Risk Management  
 Improved Risk Management  
 Improved Risk Management  
 Improved Risk Management  
 Improved Risk Management, Cross cutting  
 Improved Risk Management, Cross cutting  
 Improved Risk Management  
 Improved Risk Management  
 Improved Risk Management, Safe and Decent work  
 Improved Risk Management, Safe and Decent work

Human rights upheld  
 Human rights upheld  
 Human rights upheld  
 Human rights upheld  
 Human rights upheld  
 Inclusive access, communities  
 Inclusive access, SH  
 Inclusive access, SH  
 Human rights upheld, safe and decent work  
 Human rights upheld, safe and decent work  
 Human rights upheld, safe and decent work  
 Human rights upheld, safe and decent work  
 Human rights upheld, safe and decent work  
 Human rights upheld, safe and decent work  
 Safe and decent work

Resource use, pollution, productivity  
 Resource use minimised, pollution  
 Resource use minimised, pollution  
 Productivity optimised, Ecosystems  
 Reduced pollution  
 Ecosystem protected, Resource use minimised, Reduced pollution  
 Pollution, ecosystems  
 Resource use, pollution, ecosystems  
 Resource use minimised, pollution  
 Reduced pollution  
 Reduced pollution  
 Ecosystems protected



## PROSPERITY: COMPETITIVE, RESILIENT AND SUSTAINABLE SECTOR



### Objectives and outcomes

A sustainable, competitive and resilient palm oil sector ensures long-term viability of the entire supply chain and shared benefits for both private sector as well as the livelihoods of communities where oil palm is grown. An effective planning and management system addresses economic viability, environmental and social compliance and risk, establishes procedures and systems for ensuring conformance to the RSPO P&C, and supports continuous improvement toward sustainable palm oil

### Principle 1

**Behave ethically and transparently**

### Principle 2

**Operate legally and respect rights**

### Principle 3

**Optimise productivity, efficiency, positive impacts and resilience**

Principle 1

# BEHAVE ETHICALLY AND TRANSPARENTLY

Drive ethical business behaviour, build trust and transparency with stakeholders to ensure strong and healthy

No.	RSPO P&C Criteria	Proposed INNI 2019 Indicator
1.1	The unit of certification provides adequate information to relevant stakeholders on environmental, social and legal issues relevant to RSPO Criteria, in appropriate languages and forms to allow for effective participation in decision making.	1.1.1 (C) Management documents that are specified in the RSPO P&C are made available to the public upon request. Due to large number of stakeholders in the context of India the management documents cannot be displayed all the times. However these are to be made available whenever there is a written request from any stakeholder.
		1.1.2 Information is provided in appropriate languages and accessible to relevant stakeholders.
		1.1.3 (C) Records of requests for information and responses are maintained.
		1.1.4 (C) Consultation and communication procedures are documented, disclosed, implemented, made available, and explained to all relevant stakeholders by nominated management official.
		1.1.5 There is a current list of contact and details of stakeholders and their nominated representatives.
1.2	The unit of certification commits to ethical conduct in all business operations and transactions.	1.2.1 A policy for ethical conduct is in place and implemented in all business operations and transactions, including recruitment and contracts.
		1.2.2 A system is in place to monitor compliance and the implementation of the policy and overall ethical business practice.

Principle 2

# OPERATE LEGALLY AND RESPECT RIGHTS

Implement legal requirements as the basic principles of operation in any jurisdiction.

No.	RSPO P&C Criteria	Proposed INNI 2019 Indicator
2.1	There is compliance with all applicable local, national and ratified international laws and regulations.	2.1.1 (C) The unit of certification complies with applicable legal requirements.
		2.1.2 A documented system for ensuring legal compliance is in place. This system has a means to track changes to the law and also includes listing and evidence of legal due diligence of all contracted third parties, recruitment agencies, service providers and labour contractors.
		2.1.3 Legal or authorized boundaries are clearly demarcated and visibly maintained, and there is no planting beyond these legal or authorized boundaries.
2.2	All contractors providing operational services and supplying labour, and Fresh Fruit Bunch (FFB) suppliers, comply with legal requirements. <b>Guidance Note for 2.2</b> Refer to the Annex 2	2.2.1 A list of contracted parties is maintained.
		2.2.2 All contracts, including those for FFB supply, contain specific clauses on meeting applicable legal requirements, and this can be demonstrated by the third party and governed by the local law of the state.
		2.2.3 All contracts, including those for FFB supply, contain clauses disallowing child, forced and trafficked labour. Where young workers are employed, the contracts include a clause for their protection.

No.	RSPO P&C Criteria	Proposed INNI 2019 Indicator
2.3	<p>All FFB supplies from outside the unit of certification are from legal sources.</p> <p><b>Guidance Note for 2.3</b> Refer to the Annex 2</p>	<p>2.3.1 (C) For all directly sourced FFB, the mill requires:</p> <ul style="list-style-type: none"> <li>● Information on geo-location of FFB origins</li> <li>● Proof of the ownership status or the right/claim to the land by the grower/smallholder</li> <li>● Where applicable, valid planting/operating/trading license, or is part of a cooperative which allows the buying and selling of FFB</li> </ul> <p>2.3.2 For all indirectly sourced FFB, the unit of certification obtains from the collection centers, agents or other intermediaries, the evidence as listed in Indicator 2.3.1.</p>

### Principle 3

## OPTIMISE PRODUCTIVITY, EFFICIENCY, POSITIVE IMPACTS AND RESILIENCE

Implement plans, procedures and systems for continuous improvement.

No.	RSPO P&C Criteria	Proposed INNI 2019 Indicator
3.1	There is an implemented management plan for the unit of certification that aims to achieve long-term economic and financial viability.	3.1.1 (C) A business or management plan (minimum three years) is documented that includes, where applicable, a jointly developed business case for Scheme Smallholders.
		3.1.2 An annual replanting programme projected for a minimum of five years with yearly review, is available.
		3.1.3 The unit of certification holds management reviews at planned intervals appropriate to the scale and nature of the activities undertaken.
3.2	The unit of certification regularly monitors and reviews their economic, social and environmental performance and develops and implements action plans that allow demonstrable continuous improvement in key operations.	3.2.1 (C) The action plan for continuous improvement is implemented, based on consideration of the main social and environmental impacts and opportunities of the unit of certification.
		3.2.2 As part of the monitoring and continuous improvement process, annual reports are submitted to the RSPO Secretariat using the RSPO metrics template.
3.3	Operating procedures are Appropriately documented, Consistently implemented and monitored.	3.3.1 (C) Standard Operating Procedures (SOPs) for the unit of certification are in place.
		3.3.2 A mechanism to check consistent implementation of procedures is in place.
		3.3.3 Records of monitoring and any actions taken are maintained and available.

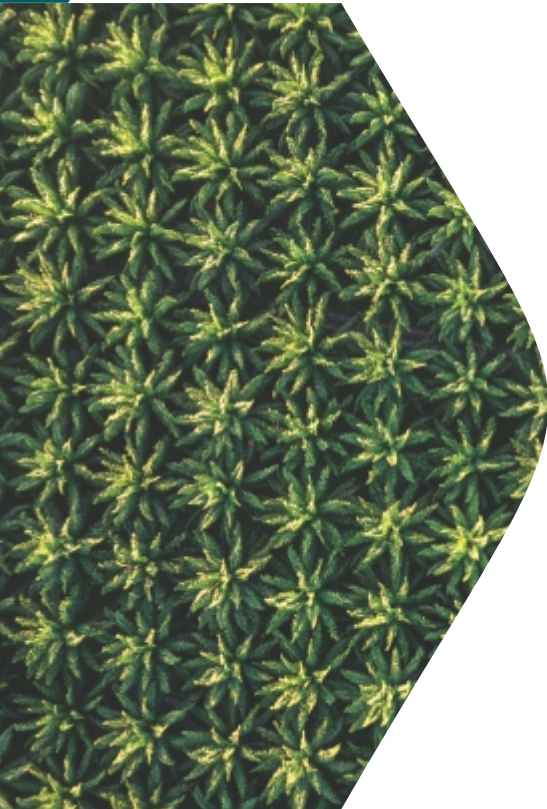
No.	RSPO P&C Criteria	Proposed INNI 2019 Indicator
3.4	A comprehensive Social and Environmental Impact Assessment (SEIA) is undertaken prior to new plantings or operations, and a social and environmental management and monitoring plan is implemented and regularly updated in ongoing operations.	<p>3.4.1 (C) In new plantings or operations including mills, an independent SEIA, undertaken through a participatory methodology involving the affected stakeholders and including the impacts of any smallholder/outgrower scheme, is documented.</p> <p>3.4.2 For the unit of certification, a SEIA is available and social and environmental management and monitoring plans have been developed with participation of affected stakeholders.</p> <p>3.4.3 (C) The social and environmental management and monitoring plan is implemented, reviewed and updated regularly in a participatory way.</p>
3.5	A system for managing human resources is in place.	<p>3.5.1 Employment procedures for recruitment, selection, hiring, promotion, retirement and termination are documented and made available to the workers and their representatives.</p> <p>3.5.2 Employment procedures are implemented, and records are maintained.</p>
3.6	An occupational health and safety (H&S) plan is documented, effectively communicated and implemented.	<p>3.6.1 (C) All operations are risk assessed to identify H&amp;S issues. Mitigation plans and procedures are documented and implemented.</p> <p>3.6.2 (C) The effectiveness of the H&amp;S plan to address health and safety risks to people is monitored.</p>



## OPTIMISE PRODUCTIVITY, EFFICIENCY, POSITIVE IMPACTS AND RESILIENCE

No.	RSPO P&C Criteria	Proposed INNI 2019 Indicator
3.7	All staff, workers, Scheme Smallholders, outgrowers, and contract workers are appropriately trained.	<p>3.7.1 (C) A documented programme that provides training is in place, which is accessible to all staff, workers, Scheme Smallholders and outgrowers, taking into account gender-specific needs, and which covers applicable aspects of the RSPO P&amp;C, in a form they understand, and which includes assessments of training.</p> <p>3.7.2 Records of training are maintained, where appropriate on an individual basis.</p> <p>3.7.3 Appropriate training is provided for personnel carrying out the tasks critical to the effective implementation of the Supply Chain Certification Standard (SCCS). Training is specific and relevant to the task(s) performed.</p>

## SUPPLY CHAIN REQUIREMENTS FOR MILLS



Disclaimer text: The following section is taken verbatim from the RSPO Supply Chain Certification Standard (14 June 2017) (RSPO SCCS), general requirements as well as modules D & E for mills. The RSPO SCCS is the document in vigour for these requirements and shall be referred to in any cases of uncertainty. Any references to other modules or sections contained in the table below refer to the RSPO SCCS document.

The RSPO SCCS document will be reviewed and revised in 2019 and the below table will be replaced upon completion of that revision process and endorsement by the RSPO BoG, at which point the reference numbering will be aligned to the P&C document and these supply chain mill requirements only contained in the P&C document forthwith.

Independent mills, who are only required to get supply chain certification, will then have to refer to this section for the mill specific requirements.

As per RSPO SCCS, all requirements are major Indicators (i.e. equivalent of critical Indicators in P&C 2018).

**PROCEDURAL NOTE:** The below numbering is as per the current RSPO SCCS standard and will be renumbered to become 3.8 and onwards following the revision of the RSPO SCCS in 2019. 'D' therefore refers to RSPO SCCS 'Module D – Crude Palm Oil (CPO) mills: Identity Preserved' and 'E' to RSPO SCCS 'Module E – CPO mills: Mass Balance'. Depending on the supply chain model chosen, the corresponding requirements apply as well as all general requirements (those with numbers only).

The RSPO SCCS document uses the terms 'site' and 'organisation' to refer to the unit of certification.

## SUPPLY CHAIN REQUIREMENTS FOR MILLS

Reference in RSPO SCCS	Indicators	ToC Outcomes
Definition Identity Preserved Mill D.1	<p>A mill is deemed to be Identity Preserved (IP) if the FFB used by the mill are sourced from plantation/ estates that are certified against the RSPO Principles and Criteria (RSPO P&amp;C), or against the Group Certification scheme.</p> <p>Certification for CPO mills is necessary to verify the volumes and sources of certified FFB entering the mill, the implementation of any processing controls (for example, if physical separation is used), and volume sales of RSPO certified products. If a mill process certified and uncertified FFB without physically separating them, then only Module E is applicable.</p>	<b>Improved risk management</b>
Definition Mass Balance Mill E.1	<p>Certification for CPO mills is necessary to verify the volumes of certified and uncertified FFB entering the mill and sales volume of RSPO certified products. A mill may be taking delivery of FFB from uncertified growers, in addition to those from its own and 3rd party certified supply base. In that scenario, the mill can claim only the volume of oil palm products produced from processing of the certified FFB as MB.</p>	<b>Improved risk management</b>
Definition Mass Balance Mill E.1	<p>The estimated tonnage of CPO and PK products that could potentially be produced by the certified mill shall be recorded by the certification body (CB) in the public summary of the P&amp;C certification report. For an independent mill, the estimated tonnage of CPO and PK products shall be recorded in the RSPO IT platform, supply chain certificate and public summary audit report. This figure represents the total volume of certified oil palm product (CPO and PK) that the certified mill is allowed to deliver in a year. The actual tonnage produced shall then be recorded in each subsequent annual surveillance report.</p>	<b>Improved risk management</b>

Reference in RSPO SCCS	Indicators	ToC Outcomes
<p>Explanation (Volume and product integrity)</p> <p>D.2 E.2 (Continued)</p>	<p>The mill shall also meet all registration and reporting requirements for the appropriate supply chain through the RSPO supply chain managing organisation (RSPO IT platform).</p>	<p><b>Improved risk management</b></p>
<p>Documented procedures</p> <p>5.3.1 D.3 E.3</p>	<p>The site shall have written procedures and/or work instructions to ensure the implementation of all elements of the applicable supply chain model specified. This shall include at minimum the following:</p> <ul style="list-style-type: none"> <li>• Complete and up-to-date procedures covering the implementation of all the elements of the supply chain model requirements.</li> <li>• Complete and up-to-date records and reports that demonstrate compliance with the supply chain model requirements (including training records).</li> <li>• Identification of the role of the person having overall responsibility for and authority over the implementation of these requirements and compliance with all applicable requirements. This person shall be able to demonstrate awareness of the organization's procedures for the implementation of this standard.</li> <li>• The site shall have documented procedures for receiving and processing certified and non-certified FFBS.</li> </ul>	<p><b>Improved risk management</b></p>
<p>Internal Audit 5.3.2</p>	<p>The site shall have a written procedure to conduct annual internal audit to determine whether the organization;</p> <ul style="list-style-type: none"> <li>• conforms to the requirements in the RSPO Supply Chain Certification Standard and the RSPO Market Communications and Claims Documents.</li> <li>• Effectively implements and maintains the standard requirements within its organization.</li> </ul>	<p><b>Improved risk management</b></p>

## SUPPLY CHAIN REQUIREMENTS FOR MILLS

Reference in RSPO SCCS	Indicators	ToC Outcomes
Internal Audit 5.3.2 (Continued)	Any non-conformities found as part of the internal audit shall be issued corrective action. The outcomes of the internal audits and all actions taken to correct non-conformities shall be subject to management review at least annually. The organisation shall be able to maintain the internal audit records and reports.	<b>Improved risk management</b>
Purchasing Goods In 5.4 D.4.1/ D.4.2 E.4.1/E.4.2	<p>The site shall verify and document the tonnage and sources of certified and the tonnage of non-certified FFBs received.</p> <p>The site shall inform the CB immediately if there is a projected overproduction of certified tonnage.</p> <p>The site shall have a mechanism in place for handling non-conforming oil palm products and/or documents.</p>	<b>Improved risk management</b>
Outsourcing Activities 5.5	5.5.1 In cases where an operation seeking or holding certification outsources activities to independent third parties (e.g. subcontractors for storage, transport or other outsourced activities), the operation seeking or holding certification shall ensure that the independent third party complies with the requirements of the RSPO Supply Chain Certification Standard. A CPO mill and independent mill cannot outsource processing activities like refining or crushing.	<b>Improved risk management</b>

Reference in RSPO SCCS	Indicators	ToC Outcomes
Outsourcing Activities 5.5 (Continued)	<p>This requirement is not applicable to outsourced storage facilities where the management of the oil palm product(s) and instructions for tank movements are controlled by the certified organisation (not the tank farm manager).</p>	<p><b>Improved risk management</b></p>
	<p>5.5.2 Sites which include outsourcing within the scope of their RSPO Supply Chain Certificate shall ensure the following:</p> <ul style="list-style-type: none"> <li>a) The site has legal ownership of all input material to be included in outsourced processes</li> <li>b) The site has an agreement or contract covering the outsourced process with each contractor through a signed and enforceable agreement with the contractor. The onus is on the site to ensure that certification bodies (CBs) have access to the outsourcing contractor or operation if an audit is deemed necessary</li> <li>c) The site has a documented control system with explicit procedures for the outsourced process which is communicated to the relevant contractor</li> <li>d) The site seeking or holding certification shall furthermore ensure (e.g. through contractual arrangements) that independent third parties engaged provide relevant access for duly accredited CBs to their respective operations, systems, and any and all information, when this is announced in advance.</li> </ul>	<p><b>Improved risk management</b></p>
	<p>5.5.3 The site shall record the names and contact details of all contractors used for the processing or physical handling of RSPO certified oil palm products.</p>	

## SUPPLY CHAIN REQUIREMENTS FOR MILLS

Reference in RSPO SCCS	Indicators	ToC Outcomes
Outsourcing Activities 5.5 (Continued)	5.5.3 The site shall at its next audit inform its CB of the names and contact details of any new contractor used for the processing or physical handling of RSPO certified oil palm products.	<b>Improved risk management</b>
Record Keeping 5.9	<p>5.9.1 The organisation shall maintain accurate, complete, up-to-date and accessible records and reports covering all aspects of these RSPO Supply Chain Certification Standard requirements.</p> <p>5.9.2 Retention times for all records and reports shall be a minimum of two (2) years and shall comply with legal and regulatory requirements and be able to confirm the certified status of raw materials or products held in stock.</p> <p>5.9.3 The organisation shall be able to provide the estimated volume of palm oil / palm kernel oil content (separate categories) in the RSPO certified oil palm product and keep an up-to-date record of the volume purchased (input) and claimed (output) over a period of twelve (12) months.</p>	<b>Improved risk management</b>
D.5.1	The site shall record and balance all receipts of RSPO certified FFB and deliveries of RSPO certified CPO and PK on a real-time basis.	<b>Improved risk management</b>

Reference in RSPO SCCS	Indicators	ToC Outcomes
E.5.1	<ul style="list-style-type: none"> <li>a) The site shall record and balance all receipts of RSPO certified FFB and deliveries of RSPO certified CPO and PK on a real-time basis and / or three-monthly basis</li> <li>b) All volumes of palm oil and palm kernel oil that are delivered are deducted from the material accounting system according to conversion ratios stated by RSPO</li> <li>c) The site can only deliver Mass Balance sales from a positive stock. Positive stock can include product ordered for delivery within three (3) months. However, a site is allowed to sell short (i.e. product can be sold before it is in stock).</li> </ul>	<b>Improved risk management</b>
Conversion Factors 5.10	<p>5.10.1 Where applicable, a conversion rate shall be applied to provide a reliable estimate for the amount of certified output available from the associated inputs. Organisations may determine and set their own conversion rates which shall be based upon past experience, documented and applied consistently. Guidance on conversion rates is published on the RSPO website (<a href="http://www.rspo.org">www.rspo.org</a>).</p> <p>5.10.2 Conversion rates shall be periodically updated to ensure accuracy against actual performance or industry average if appropriate.</p>	<b>Improved risk management</b>
Processing D.6	The site shall assure and verify through documented procedures and record keeping that the RSPO certified oil palm product is kept separated from non-certified oil palm product, including during transport and storage to strive for 100% separation.	<b>Improved risk management</b>



## SUPPLY CHAIN REQUIREMENTS FOR MILLS

Reference in RSPO SCCS	Indicators	ToC Outcomes
Sales and Goods Out 5.6	<p>5.6.1. The supplying site shall ensure that the following minimum information for RSPO certified products is made available in document form:</p> <ul style="list-style-type: none"> <li>• The name and address of the buyer;</li> <li>• The name and address of the seller;</li> <li>• The loading or shipment / delivery date;</li> <li>• The date on which the documents were issued;</li> <li>• A description of the product, including the applicable supply chain model (Identity Preserved, Segregated or Mass Balance or the approved abbreviations);</li> <li>• The quantity of the products delivered;</li> <li>• Any related transport documentation;</li> <li>• Supply Chain Certificate number of the seller;</li> <li>• A unique identification number.</li> <li>• Information shall be complete and can be presented either on a single document or across a range of documents issued for RSPO certified oil palm products (for example, delivery notes, shipping documents and specification documentation).</li> <li>• For sites that are required to announce and confirm trades in the RSPO IT platform, this shall include making Shipping Announcements / Announcements and Confirmations on the RSPO IT platform per shipment or group of shipments.</li> </ul>	Improved risk management
Registration of Transactions 5.7	<p>5.7.1 Supply chain actors who:</p> <ul style="list-style-type: none"> <li>• are mills, traders, crushers and refineries; and</li> </ul>	

Reference in RSPO SCCS	Indicators	ToC Outcomes
------------------------	------------	--------------

Registration of Transactions  
5.7 (Continued)

- take legal ownership and/or physically handle RSPO Certified Sustainable oil palm products that are available in the yield scheme of the RSPO IT Platform (Figure 2 and 3, refer Annex 1) shall register their transaction in the RSPO IT platform and confirm upon receipt where applicable.
- 5.7.2 The involved supply chain actors mentioned in 5.7.1 shall do the following actions in the RSPO IT Platform: Shipping Announcement / Announcement: When RSPO certified volume is sold as certified, the volumes of products that are in the yield scheme (Figure 2 and 3, refer Annex 1) shall be registered as a Shipping Announcement / Announcement in the RSPO IT Platform. The declaration time to do Shipping Announcement / Announcement is based on members' own standard operating procedures.
- Trace:** When RSPO certified volumes are sold as RSPO certified to actors in the supply chain beyond the refinery, the volume shall be traced at least annually. Tracing triggers the generation of a trace document with a unique traceability number. Tracing can be done in a consolidated way at least annually.
- Remove:** RSPO certified volumes sold under other schemes or as conventional, or in case of underproduction, loss or damage shall be removed.
- Confirm:** Acknowledge the purchase of RSPO certified volume by confirming Shipping Announcements / Announcements.

Claims 5.11

5.11.1 The site shall only make claims regarding the use of or support of RSPO certified oil palm products that are in compliance with the RSPO Rules on Market Communications and Claims.

Improved risk management

## PEOPLE: SUSTAINABLE LIVELIHOODS AND POVERTY REDUCTION



### Objectives and outcomes

Human rights protected, respected and remedied. The palm oil sector contributes to reducing poverty and palm oil production is a source of a sustainable livelihoods. Human rights are respected. People participate in processes that affect them with shared access and benefits. Everyone engaged in palm oil production has equal opportunities to fulfil their potential in work and community with dignity and equality, and in a healthy working and living environment

### Principle 4

**Respect community and human rights and deliver benefits**

### Principle 5

**Support smallholder inclusion**

### Principle 6

**Respect workers' rights and conditions**

Principle 4

## RESPECT COMMUNITY AND HUMAN RIGHTS AND DELIVER BENEFITS

Respect community rights, provide equal opportunities, maximize benefits from engagement and ensure remediation where

No.	RSPO P&C Criteria	Proposed INNI 2019 Indicator
4.1	The unit of certification respects human rights, which includes respecting the rights of Human Rights Defenders.	<p>4.1.1 (C) A policy to respect human rights, including prohibiting retaliation against Human Rights Defenders (HRD), is documented and communicated to all levels of the workforce, operations, FFB suppliers and local communities and prohibits intimidation and harassment by the unit of certification and contracted services, including contracted security forces.</p> <p>4.1.2 The unit of certification does not instigate violence or use any form of harassment, including the use of mercenaries and paramilitaries in their operations.</p>
4.2	There is a mutually agreed and documented system for dealing with complaints and grievances, which is implemented and accepted by all affected parties.	<p>4.2.1 (C) The mutually agreed system, open to all affected parties, resolves disputes in an effective, timely and appropriate manner, ensuring anonymity of complainants, HRD, community spokespersons and whistleblowers, where requested, without risk of reprisal or intimidation and follows the RSPO policy on respect for HRD.</p> <p>4.2.2 Procedures are in place to ensure that the system is understood by the affected parties, including by illiterate parties.</p> <p>4.2.3 The unit of certification keeps parties to a grievance informed of its progress, including against agreed timeframe and the outcome is available and communicated to relevant stakeholders.</p> <p>4.2.4 The conflict resolution mechanism includes the option of access to independent legal and technical advice, the ability for complainants to choose individuals or groups to support them and/or act as observers, as well as the option of a third-party mediator.</p>

No.	RSPO P&C Criteria	Proposed INNI 2019 Indicator
4.3	The unit of certification contributes to local sustainable development as agreed by local communities.	4.3.1 Contributions to community development that are based on the results of consultation with local communities are demonstrated.
4.4	Use of the land for oil palm does not diminish the legal, customary or user rights of other users without their free, prior and informed consent.	<p>4.4.1 <b>(C)</b> Documents showing legal ownership or lease, or authorized use of customary land authorized by customary landowners through a Free, Prior and Informed Consent (FPIC) process. Documents related to the history of land tenure and/or the actual legal or customary uses of the land are available.</p> <p>4.4.2 Copies of documents evidencing agreement-making processes and negotiated agreements detailing the FPIC process are available and include:</p> <ul style="list-style-type: none"> <li>a) Evidence that a plan has been developed through consultation and discussion in good faith with all affected groups in the communities, with particular assurance that vulnerable, minorities' and gender groups are consulted, and that information has been provided to all affected groups, including information on the steps that are taken to involve them in decision making</li> <li>b) Evidence that the unit of certification has respected communities' decisions to give or withhold their consent to the operation at the time that these decisions were taken.</li> <li>c) Evidence that the legal, economic, environmental and social implications of permitting operations on their land have been understood and accepted by affected communities, including the implications for the legal status of their land at the expiry of the unit of certification's title, concession or lease on the land.</li> </ul> <p>4.4.3 <b>(C)</b> Maps of an appropriate scale showing the extent of recognized legal, customary or user rights are developed through participatory mapping involving affected parties (including neighboring communities where applicable, and relevant authorities).</p>

## RESPECT COMMUNITY AND HUMAN RIGHTS AND DELIVER BENEFITS

No.	RSPO P&C Criteria	Proposed INNI 2019 Indicator
		<p>4.4.4 All relevant information is available in appropriate forms and languages, including assessments of impacts, proposed benefit sharing, and legal arrangements.</p> <p>4.4.5 <b>(C)</b> Evidence is available to show that communities are represented through institutions or representatives of their own choosing, including by legal counsel if they so choose.</p> <p>4.4.6 There is evidence that implementation of agreements negotiated through FPIC is annually reviewed in consultation with affected parties.</p>
4.5	<p>No new plantings are established on local peoples' land where it can be demonstrated that there are legal, customary or user rights, without their FPIC. This is dealt with through a documented system that enables these and other stakeholders to express their views through their own representative institutions.</p>	<p>4.5.1 <b>(C)</b> Documents showing identification and assessment of demonstrable legal, customary and user rights are available.</p> <p>4.5.2 <b>(C)</b> FPIC is obtained for all oil palm development through a comprehensive process, including in particular, full respect for their legal and customary rights to the territories, lands and resources via local communities' own representative institutions, with all the relevant information and documents made available, with option of resourced access to independent advice through a documented, long-term and two-way process of consultation and negotiation.</p> <p>4.5.3 Evidence is available that affected local peoples understand they have the right to say 'no' to operations planned on their lands before and during initial discussions, during the stage of information gathering and associated consultations, during negotiations, and up until an agreement with the unit of certification is signed and ratified by these local peoples. Negotiated agreements are non-coercive and entered into voluntarily and carried out prior to new operations.</p>

No.	RSPO P&C Criteria	Proposed INNI 2019 Indicator
		<p>4.5.4 To ensure local food and water security, as part of the FPIC process, participatory SEIA and participatory land-use planning with local peoples, the full range of food and water provisioning options are considered. There is transparency of the land allocation process.</p> <p>4.5.5 Evidence is available that the affected communities and rights holders have had the option to access to information and advice that is independent of the project proponent, concerning the legal, economic, environmental and social implications of the proposed operations on their lands.</p> <p>4.5.6 Evidence is available that the communities (or their representatives) gave consent to the initial planning phases of the operations prior to the issuance of a new concession or land title to the operator.</p> <p>4.5.7 New lands are not acquired for plantations and mills after 15 November 2018 as a result of recent (2005 or later) expropriations without consent (eminent domain) except in cases of smallholders benefitting from agrarian reform or anti-drug programmes.</p> <p>4.5.8 <b>(C)</b> New lands are not acquired in areas inhabited by communities in voluntary isolation.</p>
4.6	Any negotiations concerning compensation for loss of legal, customary or user rights are dealt with through a documented system that enables indigenous peoples, local communities and other stakeholders to express their views through their own representative institutions.	<p>4.6.1 <b>(C)</b> A mutually agreed procedure for identifying legal, customary or user rights, and a procedure for identifying people entitled to compensation, is in place.</p> <p>4.6.2 <b>(C)</b> A mutually agreed procedure for calculating and distributing fair and gender-equal compensation (monetary or otherwise) is established and implemented, monitored and evaluated in a participatory way, and corrective actions taken as a result of this evaluation.</p> <p>4.6.3 Evidence is available that equal opportunities are provided to both men and women to hold land titles for scheme small holdings.</p>

## RESPECT COMMUNITY AND HUMAN RIGHTS AND DELIVER BENEFITS

No.	RSPO P&C Criteria	Proposed INNI 2019 Indicator
		4.6.4 The process and outcomes of any negotiated agreements, compensation and payments are documented, with evidence of the participation of affected parties, and made publicly available to them.
4.7	For new planting, where it can be demonstrated that local peoples have legal, customary or user rights, they are compensated for any agreed land acquisitions and relinquishment of rights, subject to their FPIC and negotiated agreements.	<p>4.7.1 (C) A mutually agreed procedure for identifying people entitled to compensation is in place.</p> <p>4.7.2 (C) A mutually agreed procedure for calculating and distributing fair compensation (monetary or otherwise) is in place and documented and made available to affected parties.</p> <p>4.7.3 Communities that have lost access and rights to land for plantation expansion are given opportunities to benefit from plantation development.</p>
4.8	The right to use the land is demonstrated and is not legitimately contested by local people who can demonstrate that they have legal, customary, or user rights.	<p>4.8.1 Where there are or have been disputes, proof of legal acquisition of title and evidence that mutually agreed compensation has been made to all people who held legal, customary, or user rights at the time of acquisition is available and provided to parties to a dispute, and that any compensation was accepted following a documented process of FPIC.</p> <p>4.8.2 (C) Land conflict is not present in the area of the unit of certification. Where land conflict exists, acceptable conflict resolution processes (see Criteria 4.2 and 4.6) are implemented and accepted by the parties involved. In the case of newly acquired plantations, the unit of certification addresses any unresolved conflict through appropriate conflict resolution mechanisms.</p>



No.	RSPO P&C Criteria	Proposed INNI 2019 Indicator
		<p>4.8.3 Where there is evidence of acquisition through dispossession or forced abandonment of customary and user rights prior to the current operations and there remain parties with demonstrable customary and land use rights, these claims will be settled using the relevant requirements (Indicators 4.4.2, 4.4.3 and 4.4.4).</p> <p>4.8.4 For any conflict or dispute over the land, the extent of the disputed area is mapped out in a participatory way with involvement of affected parties (including neighbouring communities where applicable).</p>

## SUPPORT SMALLHOLDER INCLUSION

Respect community rights, provide equal opportunities, maximize benefits from engagement and ensure remediation where

No.	RSPO P&C Criteria	Proposed INNI 2019 Indicator
5.1	The unit of certification deals fairly and transparently with all smallholders (Independent and Scheme) and other local businesses.	<p>5.1.1 Current and previous period prices paid for FFB are publicly available and accessible by smallholders.</p> <p>5.1.2 <b>(C)</b> Evidence is available that the unit of certification regularly explains the FFB pricing to smallholders.</p> <p>5.1.3 <b>(C)</b> Fair pricing, including premium pricing, when applicable, is agreed with smallholders in the supply base and documented.</p> <p>5.1.4 <b>(C)</b> Evidence is available that all parties, including women and independent representative organizations assisting smallholders where requested, are involved in decision-making processes and understand the contracts. These include those involving finance, loans/credits, and repayments through FFB price reductions for replanting and or other support mechanisms where applicable.</p> <p>5.1.5 Contracts are fair, legal and transparent and have an agreed timeframe.</p> <p>5.1.6 <b>(C)</b> Agreed payments are made in a timely manner and receipts specifying price, weight, deductions and amount paid are given.</p> <p>5.1.7 Weighing equipment is verified by an independent third party on a regular basis (this can be government).</p> <p>5.1.8 The unit of certification supports Independent Smallholders with certification, where applicable., ensuring mutual agreements between the unit of certification and the smallholders on who runs the internal control system (ICS), who holds the certificates, and who holds and sells the certified material.</p>

No.	RSPO P&C Criteria	Proposed INNI 2019 Indicator
		5.1.9 (C) The unit of certification has a grievance mechanism for smallholders and all grievances raised are dealt with in a timely manner.
5.2	The unit of certification supports improved livelihoods of smallholders and their inclusion in sustainable palm oil value chains.	<p>5.2.1 The unit of certification consults with interested smallholders (irrespective of type) including women or other partners in their supply base to assess their needs for support to improve their livelihoods and their interest in RSPO certification.</p> <p>5.2.2 The unit of certification develops and implements smallholder support programme to improve smallholder livelihood and build their capacity to enhance productivity, quality, organizational and managerial competencies, and specific elements of RSPO certification (including the RSPO Standard for Independent Smallholder).</p> <p>5.2.3 Where applicable, the unit of certification provides support to smallholders to promote legality of FFB production.</p> <p>5.2.4 (C) Evidence exists that the unit of certification trains Scheme Smallholders on pesticide handling.</p> <p>5.2.5 The unit of certification regularly reviews and publicly reports on the progress of the smallholder support programme.</p>

Principle 6

# RESPECT WORKERS' RIGHTS AND CONDITIONS

Protect workers' rights and ensure safe and decent working conditions.

No.	RSPO P&C Criteria	Proposed INNI 2019 Indicator
6.1	Any form of discrimination is prohibited.	<p>6.1.1 (C) A publicly available non-discrimination and equal opportunity policy is implemented in such a way to prevent discrimination based on ethnic origin, caste, national origin, religion, disability, gender, sexual orientation, gender identity, union membership, political affiliation or age.</p> <p>6.1.2 (C) Evidence is provided that workers and groups including local communities, women, and migrant workers have not been discriminated against. Evidence includes migrant workers non-payment of recruitment fees.</p> <p>6.1.3 The unit of certification demonstrates that recruitment selection, hiring, access to training and promotion are based on skills, capabilities, qualities and medical fitness necessary for the jobs available.</p> <p>6.1.4 Pregnancy testing is not conducted as a discriminatory measure and is only permissible when it is legally mandated. Alternative equivalent employment is offered for pregnant women.</p> <p>6.1.5 (C) A gender committee is in place specifically to raise awareness, identify and address issues of concern, as well as opportunities and improvements for women.</p> <p>6.1.6 There is evidence of equal pay for the same work scope.</p>

No.	RSPO P&C Criteria	Proposed INNI 2019 Indicator
6.2	Pay and conditions for staff and workers and for contract workers always meet at least legal or industry minimum standards and are sufficient to provide decent living wages (DLW).	<p>6.2.1 (C) Applicable labour laws, union and/or other collective agreements and documentation of pay and conditions are available to the workers in national languages (English or Local State Language) and explained to them in language they understand.</p> <p>6.2.2 (C) Employment contracts and related documents detailing payments and conditions of employment (e.g. regular working hours, deductions, overtime, sick leave, holiday entitlement, maternity leave, reasons for dismissal, period of notice, etc. in compliance with national legal requirements) and payroll documents give accurate information on compensation for all work performed. This includes a form of record for work done by family members.</p> <p>6.2.3 (C) There is evidence of legal compliance for regular working hours, deductions, overtime, sickness, holiday entitlement, maternity leave, reasons for dismissal, period of notice and other legal labour requirements.</p> <p>6.2.4 (C) The unit of certification provides adequate housing, sanitation facilities, water supplies, medical, educational and welfare amenities to national standards or above, where no such public facilities are available or accessible. National laws, or in their absence the ILO Guidance on Workers' Housing Recommendation No. 115, are used. In the case of acquisitions of non-certified units, a plan is developed detailing the upgrade of infrastructure. A reasonable time (5 years) is allowed to upgrade the infrastructure.</p> <p>6.2.5 The unit of certification makes efforts to improve workers' access to adequate, sufficient and affordable food.</p> <p>6.2.6 A DLW is paid to all workers, including those on piece rate/quotas, for whom the calculation is based on achievable quotas during regular work hours.</p>

# RESPECT WORKERS' RIGHTS AND CONDITIONS

No.	RSPO P&C Criteria	Proposed INNI 2019 Indicator
		<p><b>PROCEDURAL NOTE:</b> The RSPO Labour Task Force will prepare guidance on the DLW implementation, including details on how to calculate a DLW, expected for 2019. The RSPO Secretariat will endeavor to carry out DLW country benchmarks for palm oil producing countries in which RSPO members operate and for which no Global Living Wage Coalition (GLWC) benchmarks exist.</p> <p><b>STATEMENT FROM THE RSPO STANDARD STANDING COMMITTEE REGARDING THE INDICATOR 6.2.6 ON DECENT LIVING WAGE</b></p> <p>With reference to procedural note of indicator 6.2.6, the RSPO has published a guidance on the DLW calculation in June 2019. The RSPO Secretariat will endeavor to carry out DLW country benchmarks for palm oil producing countries in which RSPO members operate and for which no Global Living Wage Coalition (GLWC) benchmarks exist<sup>1</sup>.</p> <p><b>Where a GLWC living wage standard (benchmark), or one that fulfills the basic requirements of the RSPO-endorsed living wage methodology, has been established in the country or region of operation, the same shall be used as benchmarks.</b></p> <p>In the absence of such benchmarks, the RSPO will collaborate with the GLWC and/or local experts on developing oil palm industry benchmarks<sup>2</sup>. These benchmarks will be developed in collaboration and consultation with relevant stakeholders such as palm oil industry members, workers' union, authorities and/or relevant organizations.</p>

***For countries where no living wage standard is established, until such time that an RSPO endorsed benchmark for the country is in place, national minimum wages shall be paid to all workers. In addition to the payment of minimum wages, the Unit of Certification (UoC) shall conduct an assessment of the prevailing wages and in-kind benefits provided to workers in the Unit of Certification aligned with the RSPO Guidance for Implementing a DLW<sup>3</sup>.***

Once the benchmarks are available, this procedural note is no longer applicable. UoC shall have an implementation plan towards the payment of a DLW with specific targets, and a phased implementation process including:

- Updated assessment on prevailing wages and in-kind benefits
- There is annual progress on the implementation of living wages
- Where a minimum wage, based on equivalent of baskets of goods, is stipulated in Collective Bargaining Agreements (CBAs), this shall be used as the foundation for the gradual implementation of the living wage payment
- The UoC may choose to implement the living wage payment in specific section as a pilot project; the pilot will then be evaluated and adapted before eventual scale up of the living wage implementation.

1. As of September 2019, GLWC has developed national benchmarks in [Bangladesh](#), [Belize](#), [Brazil](#), [China](#), [Colombia](#), [Costa Rica](#), [Dominican Republic](#), [Ecuador](#), [Ethiopia](#), [Ghana](#), [Guatemala](#), [India](#), [Kenya](#), [Malawi](#), [Mexico](#), [Nicaragua](#), [Pakistan](#), [South Africa](#), [Sri Lanka](#), [Uganda](#) and [Vietnam](#). These benchmarks are developed based on banana, coffee, floriculture, textile, manufacturing, seafood processing and tea industry. The RSPO is in the process of commissioning benchmarks for Malaysia and Indonesia for the palm oil sector and will develop methods to calculate and/or define DLW

# RESPECT WORKERS' RIGHTS AND CONDITIONS

No.	RSPO P&C Criteria	Proposed INNI 2019 Indicator
		<p>applicability for all palm oil producing countries in which RSPO members operate.</p> <ol style="list-style-type: none"> <li data-bbox="719 367 1482 501">2. Benchmark in this context may include other approaches and/or methods to calculate the applicability of DLW in the country or region in accordance to the RSPO endorsed method for determining a DLW. Local applicability for benchmarks is important and it may differ based on the needs of each locality or country.</li> <li data-bbox="719 533 1482 636">3. RSPO Guidance for Implementing a DLW. The RSPO will also develop further guidance and tools to calculate DLW in line with the RSPO endorsed methodology which may include independent studies by local experts in their respective region or country.</li> </ol> <p data-bbox="624 656 1482 732">6.2.7 Permanent, full-time employment is used for all core work performed by the unit of certification. Casual, temporary and day labour is limited to jobs that are temporary or seasonal.</p>
6.3	<p>The unit of certification respects the rights of all personnel to form and join trade unions of their choice and to bargain collectively. Where the right to freedom of association and collective bargaining are restricted under law, the employer facilitates parallel means of independent and free association and bargaining for all such personnel.</p>	<p data-bbox="624 785 1482 888">6.3.1 <b>(C)</b> A published statement recognizing freedom of association and right to collective bargaining in national languages (English and/or Local state Language) is available and is explained to all workers, in language that they understand, and is demonstrably implemented.</p> <p data-bbox="624 919 1482 1022">6.3.2 Minutes of meetings between the unit of certification with trade unions or workers representatives, who are freely elected, are documented in national languages (English and/or Local state language) and made available upon request.</p>



No.	RSPO P&C Criteria	Proposed INNI 2019 Indicator
		<p>6.3.3 Management does not interfere with the formation or operation of registered unions/ labour organizations or associations, or other freely elected representatives for all workers including migrant and contract workers.</p> <p>6.4.1 A formal policy for the protection of children, including prohibition of child labour and remediation is in place, and included into service contracts and supplier agreements.</p> <p>6.4.2 <b>(C)</b> There is evidence that minimum age requirements are met. Personnel files show that all workers are above the national minimum age or above company policy minimum age, whichever is higher. There is a documented age screening verification procedure.</p>
6.4	Children are not employed or exploited.	<p>6.4.3 <b>(C)</b> Young persons may be employed only for non- hazardous work, with protective restrictions in place for that work.</p> <p>6.4.4 The unit of certification demonstrates communication about its 'no child labour' policy and the negative effects of child labour, and promotes child protection to supervisors and other key staff, smallholders, FFB suppliers and communities where workers live.</p>
6.5	There is no harassment or abuse in the workplace, and reproductive rights are protected.	<p>6.5.1 <b>(C)</b> A policy to prevent sexual and all other forms of harassment and violence is implemented and communicated to all levels of the workforce.</p> <p>6.5.2 <b>(C)</b> A policy to protect the reproductive rights of all, especially of women, is implemented and communicated to all levels of the workforce.</p> <p>6.5.3 Management has assessed the needs of new mothers, in consultation with the new mothers, and actions are taken to address the needs that have been identified.</p>

# RESPECT WORKERS' RIGHTS AND CONDITIONS

No.	RSPO P&C Criteria	Proposed INNI 2019 Indicator
		<p>6.5.4 A grievance mechanism, which respects anonymity and protects complainants where requested, is established, implemented and communicated to all levels of the workforce.</p>
6.6	No forms of forced or trafficked labour are used.	<p>6.6.1 <b>(C)</b> All work is voluntary, and following are prohibited:</p> <ul style="list-style-type: none"> <li>• Retention of identity documents or passports</li> <li>• Charging the workers for recruitment fees</li> <li>• Contract substitution</li> <li>• Involuntary overtime</li> <li>• Lack of freedom of workers to resign</li> <li>• Penalty to the workers for termination of employment</li> <li>• Debt bondage</li> <li>• Withholding of wages</li> </ul> <p>6.6.2 <b>(C)</b> Where temporary or migrant workers are employed; a specific labour policy and/or procedures are established and implemented.</p>
6.7	The unit of certification ensures that the working environment under its control is safe and without undue risk to health.	<p>6.7.1 <b>(C)</b> The responsible person(s) for H&amp;S is identified. There are records of regular meetings between the responsible person(s) and workers. Concerns of all parties about health, safety and welfare are discussed at these meetings, and any issues raised are recorded.</p> <p>6.7.2 Accident and emergency procedures are in place and instructions are clearly understood by all workers. Accident procedures are available in the appropriate language of the workforce. Assigned operatives trained in first aid are present in both field and other operations, and first aid equipment is available at worksites.</p>

**No.      RSPO P&C Criteria      Proposed INNI 2019 Indicator**



Records of all accidents are kept and periodically reviewed.

6.7.3      (C) Workers use appropriate personal protective equipment (PPE), which is provided free of charge to all workers at the place of work to cover all potentially hazardous operations, such as pesticide application, machine operations, land preparation, and harvesting. Sanitation facilities for those applying pesticides are available, so that workers can change out of PPE, wash and put on their personal clothing.

6.7.4      All workers are provided with medical care and covered by accident insurance. Costs incurred from work- related incidents leading to injury or sicknesses are covered in accordance with national law or by the unit of certification where national law does not offer protection. For temporary workers who cannot be covered under regular insurance, access to medical care to be provided.

6.7.5      Occupational injuries are recorded using Lost Time Accident (LTA) metrics.

## PLANET: CONSERVED, PROTECTED AND ENHANCED ECOSYSTEMS THAT PROVIDE FOR THE NEXT GENERATION



### Objectives and outcomes

Ecosystems and their services are protected, restored and resilient, supported by sustainable consumption and production, and sustainable management of natural resources (in line with SDG 15 – sustainably manage forests, combat desertification, halt and reverse land degradation, halt biodiversity loss). Climate change is addressed through continuous GHG reductions; air and water pollution are controlled. There is greater resilience in our food and fibre production. The water and air are cleaner, and carbon is drawn out of the air to regenerate soils for current and future generations. Inputs decrease while yields are maintained, or even improved

### Principle 7

**Protect, conserve and enhance ecosystems and the environment**

Principle 7

# PROTECT, CONSERVE AND ENHANCE ECOSYSTEMS AND THE ENVIRONMENT

Protect the environment, conserve bio diversity and ensure sustainable management of natural resources.

No.	RSPO P&C Criteria	Proposed INNI 2019 Indicator
7.1	Pests, diseases, weeds and invasive introduced species are effectively managed using appropriate Integrated Pest Management (IPM) techniques.	7.1.1 (C) IPM plans are implemented and monitored to ensure effective pest control.
		7.1.2 Species referenced in the Global Invasive Species Database and CABI.org is not to be used in managed areas, unless plans to prevent and monitor their spread are implemented.
		7.1.3 There is no use of fire for pest control unless in exceptional circumstances, i.e. where no other effective methods exist, and with prior approval of government authorities.
7.2	Pesticides are used in ways that do not endanger health of workers, families, communities or the environment.	7.2.1 (C) Justification of all pesticides used is demonstrated. Selective products and application methods that are specific to the target pest, weed or disease are prioritized.
		7.2.2 (C) Records of pesticides use (including active ingredients used and their Ld50, area treated, amount of active ingredients applied per ha and number of applications) are provided.
		7.2.3 (C) Any use of pesticides is minimized as part of a plan, eliminated where possible, in accordance with IPM plans.
		7.2.4 There is no prophylactic use of pesticides, unless in exceptional circumstances, as identified in national best practice guidelines. <b>Guidance Note added</b> Please refer to the Annex 2

No.	RSPO P&C Criteria	Proposed INNI 2019 Indicator
		<p>7.2.9 <b>(C)</b> Aerial spraying of pesticides is prohibited, unless in exceptional circumstances where no other viable alternatives are available. This requires prior government authority approval. All relevant information is provided to affected local communities at least 48 hours prior to application of aerial spraying.</p> <p>7.2.10 <b>(C)</b> Specific annual medical surveillance for pesticide operators, and documented action to treat related health conditions, is demonstrated.</p> <p>7.2.11 <b>(C)</b> No work with pesticides is undertaken by persons under the age of 18, pregnant or breast-feeding women or other people that have medical restrictions and they are offered alternative equivalent work.</p>
7.3	Waste is reduced, recycled, reused and disposed of in an environmentally and socially responsible manner.	<p>7.3.1 A waste management plan which includes reduction, recycling, reusing, and disposal based on toxicity and hazardous characteristics, is documented and implemented.</p> <p>7.3.2 Proper disposal of waste material, according to procedures that are fully understood by workers and managers, is demonstrated.</p> <p>7.3.3 The unit of certification does not use open fire for waste disposal.</p>
7.4	Practices maintain soil fertility at, or where improve soil fertility to, a level that ensures optimal and sustained yield.	<p>7.4.1 Good agriculture practices, as contained in SOPs, are followed to manage soil fertility to optimize yield and minimize environmental impacts.</p> <p>7.4.2 Periodic tissue and soil sampling is carried out to monitor and manage changes in soil fertility and plant health as per the government guidelines.</p> <p>7.4.3 A nutrient recycling strategy is in place, which includes the recycling of Empty Fruit Bunches (EFB), Palm Oil Mill Effluent (POME), palm residues and optimal use of inorganic fertilizers.</p>

Principle 7

# PROTECT, CONSERVE AND ENHANCE ECOSYSTEMS AND THE ENVIRONMENT

No.	RSPO P&C Criteria	Proposed INNI 2019 Indicator
		7.4.4 Records of fertilizer inputs are maintained.
7.5	Practices minimize and control erosion and degradation of soils	7.5.1 <b>(C)</b> Maps identifying marginal and fragile soils, including steep terrain, is available. 7.5.2 No replanting of any individual, contiguous area of steep terrain 7.5.3 There is no new planting of oil palm on steep terrain.
7.6	Soil surveys and topographic information are used for site planning in the establishment of new plantings, and the results are incorporated into plans and operations.	7.6.1 <b>(C)</b> To demonstrate the long-term suitability of land for palm oil cultivation, soil maps or soil surveys identifying marginal and fragile soils, including steep terrain, are taken into account in plans and operations. 7.6.2 Extensive planting on marginal and fragile soils, is avoided, or, if necessary, done in accordance with the soil management plan for best practices. 7.6.3 Soil surveys and topographic information guide the planning of drainage and irrigation systems, roads and other infrastructure.
7.7	No new planting on peat, regardless of depth after 15 November 2018 and all peat lands are managed responsibly.	7.7.1 <b>(C)</b> There is no new planting on peat regardless of depth after 15 November 2018 in existing and new development areas. 7.7.2 Areas of peat within the managed areas are inventoried documented and reported (effective from 15 November 2018) to RSPO Secretariat.

No.	RSPO P&C Criteria	Proposed INNI 2019 Indicator
		<p>7.7.3 (C) Subsidence of peat is monitored, documented and minimized.</p> <p>7.7.4 (C) A documented water and ground cover management programme is in place.</p> <p>7.7.5 (C) For plantations planted on peat, drainability assessments are conducted following the RSPO Drainability Assessment Procedure, or other RSPO recognized methods, at least five years prior to replanting. The assessment result is used to set the timeframe for future replanting, as well as for phasing out of oil palm cultivation at least 40 years, or two cycles, whichever is greater, before reaching the natural gravity drainability limit for peat. When oil palm is phased out, it is replaced with crops suitable for a higher water table (paludiculture) or rehabilitated with natural vegetation.</p> <p>7.7.6 (C) All existing plantings on peat are managed according to the 'RSPO Manual on Best Management Practices (BMPs) for existing oil palm cultivation on peat', version 2 (2018) and associated audit guidance.</p> <p>7.7.7 (C) All areas of unplanted and set-aside peat lands in the managed area (regardless of depth) are protected as “peat land conservation areas”; new drainage, road building and power lines by the unit of certification on peat soils is prohibited; peat lands are managed in accordance with the 'RSPO BMPs for Management and Rehabilitation of Natural Vegetation Associated with Oil Palm Cultivation on Peat', version 2 (2018) and associated audit guidance.</p>
7.8	Practices maintain the quality and availability of surface and groundwater.	<p>7.8.1 A water management plan is in place and implemented to promote more efficient use and continued availability of water sources and to avoid negative impacts on other users in the catchment. The plan addresses the following:</p> <p>a) The unit of certification does not restrict access to clean water or contribute to pollution of water used by communities.7.8.1b Workers have adequate access to clean water.</p>



# PROTECT, CONSERVE AND ENHANCE ECOSYSTEMS AND THE ENVIRONMENT

No.	RSPO P&C Criteria	Proposed INNI 2019 Indicator
		<p>b) Workers have adequate access to clean water.</p> <p>7.8.2 (C) Water courses and wetlands are protected, including maintaining and restoring appropriate riparian and other buffer zones in line with 'RSPO Manual on BMPs for the management and rehabilitation of riparian reserves' (April 2017).</p> <p>7.8.3 Mill effluent is treated to be in compliance with national regulations. Discharge quality of mill effluent, especially Biochemical Oxygen Demand (BOD), is regularly monitored.</p> <p>7.8.4 Mill water use per tonne of FFB is monitored and recorded.</p>
7.9	Efficiency of fossil fuel use and the use of renewable energy is optimized.	7.9.1 A plan for efficiency of the use of fossil fuels and to optimize renewable energy is in place, monitored and documented.
7.10	Plans to reduce pollution and emissions, including greenhouse gases (GHG), are developed, implemented and monitored and new developments are designed to minimize GHG emissions.	<p>7.10.1 (C) GHG emissions are identified and assessed for the unit of certification. Plans to reduce or minimize them are implemented, monitored through the Palm GHG calculator and publicly reported.</p> <p>7.10.2 (C) Starting 2014, the carbon stock of the proposed development area and major potential sources of emissions that may result directly from the development are estimated and a plan to minimize them prepared and implemented (guided by the RSPO GHG Assessment Procedure for New Development).</p> <p>7.10.3 (C) Other significant pollutants are identified and plan to reduce or minimize them implemented and monitored.</p>

No.	RSPO P&C Criteria	Proposed INNI 2019 Indicator
7.11	Fire is not used for preparing land and is prevented in the managed area.	<p>7.11.1 (C) Land for new planting or replanting is not prepared by burning.</p> <p>7.11.2 The unit of certification establishes fire prevention and control measures for the areas under its direct management.</p> <p>7.11.3 The unit of certification engages with adjacent stakeholders on fire prevention and control measures.</p>
7.12	Fire is not used for preparing land and is prevented in the managed area.	<p>7.12.1 (C) Land clearing since November 2005 has not damaged primary forest or any area required to protect or enhance HCVs. Land clearing since 15 November 2018 has not damaged HCVs or HCS forests. A historic Land Use Change Analysis (LUCA) is conducted prior to any new land clearing, in accordance with the RSPO LUCA guidance document.</p> <p>7.12.2 (C) HCVs, HCS forests and other conservation areas are identified as follows:</p> <ul style="list-style-type: none"> <li>a) For existing plantations with an HCV assessment conducted by an RSPO-approved assessor and no new land clearing after 15 November 2018, the current HCV assessment of those plantations remains valid.</li> <li>b) Any new land clearing (in existing plantations or new plantings) after 15 November 2018 is preceded by an HCV-HCS assessment, using the HCSA Toolkit and the HCV-HCSA Assessment Manual. This will include stakeholder consultation and take into account wider landscape-level considerations.</li> </ul> <p>7.12.3 (C) In High Forest Cover Landscapes (HFCLs) within HFCCs, a specific procedure will apply for legacy cases and development by indigenous peoples and local communities with legal or customary rights, taking into consideration regional and national multi-stakeholder processes. Until this procedure is developed and endorsed, 7.12.2 applies.</p> <p>7.12.4 (C) Where HCVs, HCS forests after 15 November 2018, peat land and other</p>

# PROTECT, CONSERVE AND ENHANCE ECOSYSTEMS AND THE ENVIRONMENT

No.	RSPO P&C Criteria	Proposed INNI 2019 Indicator
		<p>conservation areas have been identified, they are protected and/or enhanced. An integrated management plan to protect and/or enhance HCVs, HCS forests, peat land and other conservation areas is developed, implemented and adapted where necessary, and contains monitoring requirements. The integrated management plan is reviewed at least once every five years. The integrated management plan is developed in consultation with relevant stakeholders and includes the directly managed area and any relevant wider landscape level considerations (where these are identified).</p> <p>7.12.5 Where rights of local communities have been identified in HCV areas, HCS forest after 15 November 2018, peat land and other conservation areas, there is no reduction of these rights without evidence of a negotiated agreement, obtained through FPIC, encouraging their involvement in the maintenance and management of these conservation areas.</p> <p>7.12.6 All rare, threatened or endangered (RTE) species are protected, whether or not they are identified in an HCV assessment. A programme to regularly educate the workforce about the status of RTE species is in place. Appropriate disciplinary measures are taken and documented in accordance with company rules and national law if any individual working for the company is found to capture, harm, collect, trade, possess or kill these species.</p> <p>7.12.7 The status of HCVs, HCS forests after 15 November 2018, other natural ecosystems, peat land conservation areas and RTE species is monitored. Outcomes of this monitoring are fed back into the management plan.</p> <p>7.12.8 <b>(C)</b> Where there has been land clearing without prior HCV assessment since November 2005, or without prior HCV-HCSA assessment since 15 November 2018, the Remediation and Compensation Procedure (RaCP) applies.</p>

## ANNEX 1: DEFINITIONS

Term	Definition	Source
<b>Carbon neutrality</b>	<p>Carbon neutrality refers to achieving net zero GHG emissions by balancing a measured amount of carbon dioxide equivalent (CO2e) emissions released with an equivalent amount sequestered or offset.</p> <p>(The term “climate neutral” reflects the broader inclusiveness of other greenhouse gases in addition to carbon dioxide in climate change. The terms are used interchangeably.)</p>	P&C Review 2018
<b>Child</b>	The term child applies to all persons under the age of 18.	ILO Minimum Age Convention, 1973 (No. 138) Worst Forms of Child Labour Convention, 1999 (No. 182)
<b>Child labour</b>	<p>Child labour is work that deprives children of their childhood, their potential and their dignity, and that is harmful to physical and mental development.</p> <p>The term applies to:</p> <ul style="list-style-type: none"><li>· All children under 18 involved in the “worst forms of child labour” (as per ILO Convention No. 182)</li><li>· All children aged under 12 taking part in economic Activity</li><li>· All 12 to 14-year-olds engaged in more than light work.</li></ul> <p>The ILO defines light work as work that is not likely to be harmful to children's health or development and not likely to be detrimental to their attendance at school or vocational training.</p>	ILO Minimum Age Convention, 1973 (No. 138)

## DEFINITIONS

Term	Definition	Source
<b>Child labour</b>	Those under 18 years old shall not engage in hazardous work that might jeopardise their physical, mental or moral well-being, either because of its nature or the conditions under which it is carried out. For young workers above the legal minimum age but below 18, there shall be restrictions on hours of work and overtime; working at dangerous heights; with dangerous machinery, equipment and tools; transport of heavy loads; exposure to hazardous substances or processes; and difficult conditions such as night work at night.	ILO Minimum Age Convention, 1973 (No. 138)
<b>Contract substitution</b>	The practice of substituting or changing the terms of employment to which the worker originally agreed, either in writing or verbally, which results in worse conditions or less benefits. Changes to the employment agreement or contract are prohibited unless these changes are made to meet local law and provide equal or better terms.	ILO Report to the Committee examining alleged non-compliance by Qatar of Forced Labour
<b>Contract worker</b>	Contract worker refers to persons engaged in temporary work, or work for a specific period of time. It also refers to workers who are not employed directly by the company, but employed by a contractor or consultant with whom the company has a direct contract.	ILO, Non-Standard Forms of Employment

Term	Definition	Source
<p><b>Core work</b></p>	<p>The primary area or activity that a company was founded to do or focuses on in its business operations. Core work pertains to work that is essential and desirable to the growth of the organisation.</p> <p>All agricultural and milling activities are considered core work, e.g. planting, harvesting, fertilising, maintenance; FFB sorting and grading; machine-technical maintenance; and machine operation.</p>	<p>P&amp;C Review 2018</p>
<p><b>Debt bondage</b></p>	<p>The status or condition of debt bondage when their labour, or the labour of a third party under their control, is demanded as repayment of a loan or of money given in advance, and the value of their labour is not applied towards the liquidation of the debt or the length of the service is not limited and/or the nature of the service is not defined.</p>	<p>UN GA Human Rights Council: Report of the Special Rapporteur on contemporary forms of slavery, including its causes and consequences. July 2016.</p>
<p><b>Decent living wage</b></p>	<p>The remuneration received by a worker, for work performed on regular hours, in a particular place sufficient to afford a decent standard of living for the worker and her or his family.</p>	<p>Adapted from GLWC</p>
<p><b>Deforestation</b></p>	<p>Loss of natural forest as a result of:</p> <ul style="list-style-type: none"> <li>i) conversion to agriculture or other non-forest land use;</li> <li>ii) conversion to a plantation forest; or</li> <li>iii) severe and sustained degradation.</li> </ul>	<p>Draft Accountability Framework Initiativea (AFI) (July 2018). Refer to latest AFI definition</p>

## DEFINITIONS

Term	Definition	Source
<b>Due diligence</b>	A risk management process implemented by a company to identify, prevent, mitigate, and account for how it addresses environmental and social risks and impacts in its operations, supply chains, and investments.	Draft AFI (July 2018). Always refer to latest AFI definition
<b>Eminent domain and expropriation</b>	Eminent domain is the statutory power of governments to expropriate private property for public use or in the national interest, usually with the payment of compensation according to rates defined by law. Expropriation implies divesting persons of their property without requiring their agreement or consent.	P&C Review 2018
<b>Extensive replanting on</b>	Any individual, contiguous planted area on steep terrain (>25 degrees) greater than 25 ha within the re-planting area.	P&C 2013, Annex 2, NI Guidance
<b>Facilitation payment</b>	Bribes paid to facilitate routine government action [1]. A common example is where a government official is given money or goods to perform (or speed up the performance of) an existing duty [2].	[1] UK Bribery Act 2010 Guidance [2] UK Serious Fraud Office Bribery Act Guidance
<b>Family farm</b>	A farm operated and mostly owned by a family, for the growing of oil palm, sometimes along with subsistence production of other crops, and where the family provides the majority of the labour used. Such farms provide the principal source of income, and the planted area of oil palm is below 22 ha in size. Work by children is acceptable on family farms, under adult supervision; when not interfering with education programmes; when children are part of the family and when they are not exposed to hazardous working conditions.	INNI P&C 2018

Term	Definition	Source
<b>Food security</b>	<p>Food security is achieved when all people, at all times, have physical, social and economic access to sufficient, safe and nutritious food to meet their dietary needs and food preferences for an active and healthy life. Four dimensions of food security are commonly identified: food availability, food access, utilisation and stability.</p>	<p>FAO World Food Summit, 1996. See FAO Policy Brief Issue 2, June 2006 for further detail.</p>
<b>Forced labour</b>	<p>All work or service which is exacted from any person under the menace of any penalty and for which said person has not offered him or herself voluntarily.</p> <p>This definition consists of three</p> <ol style="list-style-type: none"> <li>1. Work or service refers to all types of work occurring in any activity, industry or</li> <li>2. sector including in the informal economy.</li> </ol> <p>Menace of any penalty refers to a wide range of penalties used to compel someone to work.</p> <ol style="list-style-type: none"> <li>3. Involuntariness: The terms “offered voluntarily” refer to the free and informed consent of a worker to take a job and his or her freedom to leave at any time. This is not the case for example when an employer or recruiter makes false promises so that a worker takes a job he or she would not otherwise have accepted.</li> </ol>	<p>ILO Forced Labour Definition</p> <p>ILO, Forced Labour Convention, 1930 (No. 29)</p> <p>ILO, Protocol of 2014 to the Forced Labour Convention, 1930 (P029)</p> <p>ILO, Abolition of Forced Labour Convention, 1957 (No. 105)</p> <p>ILO, Forced Labour Recommendation 2014 (No. 203)</p>
<b>Fragile soil</b>	<p>A soil that is susceptible to degradation (reduction in fertility) when disturbed. A soil is particularly fragile if the degradation rapidly leads to an unacceptably low level of fertility or if it is irreversible using economically feasible management inputs. (See also definition for 'marginal soil')</p>	<p>P&amp;C Review 2018</p>



## DEFINITIONS

Term	Definition	Source
<b>Gender equal</b>	This refers to the equal rights, responsibilities and opportunities of women and men,	UN Women, OSAGI Gender Mainstreaming - Concepts and definitions
<b>Greenhouse gas</b>	<p>Greenhouse gases (GHGs) are those gaseous constituents of the atmosphere, both natural and anthropogenic, that absorb and emit radiation at specific wavelengths within the spectrum of thermal infrared radiation emitted by the Earth's surface, the atmosphere itself, and by clouds.</p> <p>GHGs are measured in terms of their global warming potential – the impact a GHG has on the atmosphere expressed in the equivalent amount of carbon dioxide CO<sub>2</sub> (CO<sub>2</sub>e). Greenhouse gases regulated by the Kyoto Protocol include: carbon dioxide (CO<sub>2</sub>), methane (CH<sub>4</sub>), nitrous oxides (N<sub>2</sub>O), Hydrofluorocarbons (HFCs), perfluorocarbons (PFC), and sulphur hexafluoride (SF<sub>6</sub>).</p>	Intergovernmental Panel on Climate Change (IPCC) Data Distribution Centre
<b>Hazardous work</b>	<p>Hazardous work is work performed in hazardous conditions; or “in the most hazardous sectors and occupations, such as agriculture, construction, mining, or ship-breaking, or where working relationships or conditions create particular risks, such as exposure to hazardous agents, such as chemical substances or radiation, or in the informal economy.” (<a href="https://www.ilo.org/safework/areasofwork/hazardous-work/lang--en/index.htm">https://www.ilo.org/safework/areasofwork/hazardous-work/lang--en/index.htm</a>)</p> <p>Hazardous work is also defined as “any work which is likely to jeopardise children's physical, mental or moral health, safety or morals” and which “shall not be done by anyone under the age of 18.” (<a href="https://www.ilo.org/ipecc/facts/ILOconventionsonchildlabour/lang--en/index.htm">https://www.ilo.org/ipecc/facts/ILOconventionsonchildlabour/lang--en/index.htm</a>)</p>	UN Women, OSAGI Gender Mainstreaming - Concepts and definitions

Term	Definition	Source
High Carbon Stock forest	Forests that have been identified using the High Carbon Stock Approach (HCSA) Toolkit	HCSA website <a href="http://www.highcarbonstock.org">www.highcarbonstock.org</a>
High Forest Cover Country (HFCC)	Countries defined as having >60% forest cover (based on recent, trusted REDD+ and national data); <1% oil palm cover; a deforestation trajectory that is historically low but increasing or constant; and a known frontier area for oil palm or where major areas have been allocated for development	RSPO No Deforestation consultancy: HFCC Proforest, 2018
High Forest Cover Landscape (HFCL)	Landscapes having >80% forest cover. Landscape as defined under HCSA Toolkit (Module 5): “The size of a landscape may be determined by (a) identifying the watershed or the geographical land unit containing a cluster of interacting ecosystems; (b) selecting a unit size that encompasses the plantation concession and a buffer of the surrounding area (e.g. 50,000 ha or 100,000 ha); or (c) using a radius of 5 km from the area of interest (for instance, the planned concession).”	HCSA Toolkit (v2)
High Conservation Value (HCV) areas:	<p>The areas necessary to maintain or enhance one or more High Conservation Values (HCVs):</p> <p><b>HCV 1 – Species diversity;</b> Concentrations of biological diversity including endemicspecies, and rare, threatened or endangered (RTE) species, that are significant at global, regional or national levels.</p> <p><b>HCV 2 – Landscape-level ecosystems, ecosystem mosaics and Intact Forest Landscapes (IFL);</b> Large landscape-level ecosystems, ecosystem mosaics and IFL that are significant at global, regional or national levels, and that contain viable populations of the great majority of the naturally occurring species in natural patterns of distribution and abundance.</p> <p><b>HCV 3 – Ecosystems and habitats;</b> RTE ecosystems, habitats or refugia.</p>	High Conservation Value Resource Network (HCVRN) Common Guidance for Identification of HCVs 2017

## DEFINITIONS

Term	Definition	Source
High Conservation Value (HCV) areas: (Continued)	<b>HCV 4 – Ecosystem services;</b> Basic ecosystem services in critical situations, including protection of water catchments and control of erosion of vulnerable soils and slopes.	High Conservation Value Resource Network (HCVRN) Common Guidance for Identification of HCVs 2017
	<b>HCV 5 – Community needs;</b> Sites and resources fundamental for satisfying the basic necessities of local communities or indigenous peoples (for livelihoods, health, nutrition, water, etc.), identified through engagement with these communities or indigenous peoples.	
	<b>HCV 6 – Cultural values;</b> Sites, resources, habitats and landscapes of global or national cultural, archaeological or historical significance, and/or of critical cultural, ecological, economic or religious/sacred importance for the traditional cultures of local communities or indigenous peoples, identified through engagement with these local communities or indigenous peoples.	
Human Rights Defenders (HRD)	Individuals, groups and associations who promote and protect universally recognised human rights and contribute to the effective elimination of all forms of violations of human rights and fundamental freedoms of individuals and peoples. This definition includes Environmental HRD, whistleblowers, complainants and community spokespersons. This definition does not include those individuals who commit or propagate violence.	RSPO policy on the protection of HRD, Whistleblowers, Complainants and Community Spokesmen (endorsed by BoG on 24 Sept 2018)
Independent Smallholder	All smallholder farmers that are not considered to be Scheme Smallholders [see definition for Scheme Smallholders] are considered Independent Smallholder . Total size of oil palm production area shall be smaller or equal to 22 Ha.	INNI P&C 2018

Term	Definition	Source
<p><b>Indigenous peoples</b></p>	<p>Indigenous peoples are inheritors and practitioners of unique cultures and ways of relating to people and the environment. They have retained social, cultural, economic and political characteristics that are distinct from those of the dominant societies in which they live. Despite their cultural differences, indigenous peoples from around the world share common problems related to the protection of their rights as distinct peoples.</p> <p>Indigenous peoples have sought recognition of their identities, way of life and their right to traditional lands, territories and natural resources for years, yet throughout history, their rights have always been violated. Indigenous peoples today, are arguably among the most disadvantaged and vulnerable groups of people in the world. The international community now recognises that special measures are required to protect their rights and maintain their distinct cultures and way of life.</p>	<p>UNDESA, Division for Inclusive Social Development, Indigenous Peoples</p>
<p><b>In good faith</b></p>	<p>The principle of good faith implies that the parties make every effort to reach an agreement, conduct genuine and constructive negotiations, avoid unjustified delays in negotiations, respect agreements concluded and applied in good faith, and give sufficient time to discuss and settle collective disputes. In the case of multinational enterprises, such companies shall not threaten to transfer the whole or part of an operating unit from the country concerned in order to unfairly influence negotiations.</p>	<p>ILO Q&amp;As on business and collective bargaining</p>
<p><b>Integrated Pest Management (IPM)</b></p>	<p>IPM is the careful consideration of all available pest control techniques and subsequent integration of appropriate measures that discourage the development of pest populations and keep pesticides and other interventions to levels that are economically justified and reduce or minimise risks to human health and the environment. IPM emphasises the growth of a healthy crop with the least possible disruption to agro-ecosystems and encourages natural pest control mechanisms.</p>	<p>P&amp;C 2013          FAO 2013  <a href="http://www.fao.org/agriculture/crops/thematicstitemap/theme/pests/ipm/en/">http://www.fao.org/agriculture/crops/thematicstitemap/theme/pests/ipm/en/</a></p>

## DEFINITIONS

Term	Definition	Source
<b>Intimidation and harassment</b>	Intimidation and harassment include loss of income due to/resulting in organisational restrictions, threats of dismissal from employment, restrictions on travel, restrictions to the environment in which the HRDs operate, deliberate obstruction to holding of meetings between HRDs, hostility within the community the HRDs lives as claims may be seen to jeopardise the community's honour and culture (this may especially be the case with women HRDs). More serious measures include character assassination of HRDs, discrediting, defamation campaigns, arbitrary use of security forces, surveillance, SLAPP suits (Strategic Lawsuits against Public Participation) due to his or her work and/or in the course of his/her activities, threats of physical violence and death threats. Special attention is needed to avoid gender-specific violence such as rape or threats of sexual violence used to silence women.	P&C Review 2018
<b>ISO standards</b>	Standards developed by the International Organization for Standardization.	P&C 2013 ISO: <a href="http://www.iso.org">www.iso.org</a>
<b>Land clearing</b>	Conversion of land from one land use to another. Clearing actively managed oil palm plantation to replant oil palm is not considered land clearing. Within existing certified units, clearing of less than 10 ha is not considered new land clearing.	P&C Review 2018
<b>Landscape</b>	A geographical mosaic composed of interacting ecosystems resulting from the influence of geological, topographical, soil, climatic, biotic and human interactions in a given area.	IUCN <a href="https://www.iucn.org/downloads/en_iucn_glossarydefinitions.pdf">https://www.iucn.org/downloads/en_iucn_glossarydefinitions.pdf</a>

Term	Definition	Source
<p><b>Landscape level</b></p>	<p>The size of a landscape may be determined by (a) identifying the watershed or the geographical land unit containing a cluster of interacting ecosystems; (b) selecting a unit size that encompasses the plantation concession and a buffer of the surrounding area (e.g. 50,000 ha or 100,000 ha); or (c) using a radius of 5 km from the area of interest (i.e. planned concession boundaries).</p>	<p>HCV-HCSA Assessment Manual 2017</p>
<p><b>Livelihood</b></p>	<p>A person's or a group's way of making a living, from their environment or in the economy, including how they provision their basic needs and assure themselves and following generations secure access to food, clean water, health, education, housing and the materials needed for their life and comfort either through their own direct use of natural resources or through exchange, barter, trade or engagement in the market.</p> <p>A livelihood includes not just access to resources but the knowledge and institutions that make this possible such as time for community participation and integration, personal, local or traditional ecological knowledge, skills, endowments and practices, the assets that are intrinsic to that way of making a living (e.g. farms, fields, pastures, crops, stock, natural resources, tools, machinery and intangible cultural properties) and their position in the legal, political and social fabric of society.</p> <p>The risk of livelihood failure determines the level of vulnerability of a person or a group to income, food, health and nutritional insecurity. Therefore, livelihoods are secure when they have secure ownership of, or access to, resources and income earning activities, including reserves and assets, to offset risks, ease shocks and meet contingencies.</p>	<p>P&amp;C 2013</p>

## DEFINITIONS

Term	Definition	Source
<b>Livelihood (Continued)</b>	(Compiled from various definitions of livelihoods from Department for International Development (DfID), Institute of Development Studies (IDS) and FAO and academic texts from: <a href="http://www.fao.org/docrep/X0051T/X0051t05.htm">http://www.fao.org/docrep/X0051T/X0051t05.htm</a> ).	P&C 2013
<b>Managed area</b>	The land containing oil palm and associated land uses such as infrastructure (e.g. roads), riparian zones and conservation set-asides.	P&C Review 2018
<b>Management documents</b>	Management documents are documented information and evidence to interact with the RSPO P&C. It shall be in the form of manual, working procedures, report and records that subject to be audited and reviewed periodically.	ISO 9001 QMS – <a href="https://advisera.com">https://advisera.com</a>
<b>Marginal soil</b>	A soil that is unlikely to produce acceptable economic returns for the proposed crop at reasonable projections of crop value and costs of amelioration. Degraded soils are not marginal soils if their amelioration and resulting productivity is cost effective. (See also definition for 'fragile soil'.)	P&C Review 2018
<b>Migrant worker</b>	A person who migrates from one country to another with a view to being employed otherwise than on his own account and includes any person regularly admitted as a migrant for employment. Migrants are defined as those who cross international boundaries for the purposes of employment, and do not include those workers who move within a country for the purposes of employment.	P&C 2013

Term	Definition	Source
<b>Natural ecosystems</b>	All land with natural, native vegetation, including but not limited to native forests, riparian vegetation, natural wetlands, peatlands, grasslands, savannahs, and prairies.	P&C Review 2018
<b>New planting</b>	Planned or proposed planting on land not previously cultivated with oil palm.	NPP 2015
<b>Non-hazardous work</b>	See definition for hazardous work	
<b>Operations</b>	All activities planned and/or undertaken by the management unit within the boundaries of the palm oil mill and its supply base.	P&C 2013
<b>Other conservation areas</b>	Areas (in addition to HCV, HCS forests and peatland conservation areas) that are required to be conserved by the RSPO P&C (such as riparian areas and steep slopes) and other areas allocated by the unit of certification.	P&C Review 2018
<b>Outgrowers</b>	Farmers, where the sale of FFB is exclusively contracted to the unit of certification.	P&C 2013
<b>Peat</b>	A soil with cumulative organic layer(s) comprising more than half of the upper 80 cm or 100 cm of the soil surface containing 35% or more of organic matter (35% or more Loss on Ignition) or 18% or more organic carbon. Note for management of existing plantations in Malaysia and Indonesia, a narrower definition has been used, based on national regulations: namely soil with an organic layer of more than 50% in the top 100 cm containing more than 65% organic matter.	PLWG2 July 2018 Derived from FAO and USDA definition for histosols (organic soils) (FAO 1998, 2006/7; USDA 2014)



## DEFINITIONS

Term	Definition	Source
<b>Pesticide</b>	Substances or a mixture of substances intended for preventing, destroying, repelling or mitigating any pest. Pesticides are categorised into four main substituent chemicals: herbicides; fungicides; insecticides and bactericides.	P&C 2013
<b>Plan</b>	A time-bound and detailed scheme, programme, or method for achieving objective(s) and desired outcome(s). Plans shall have clear targets with timelines for delivery, actions to be taken and a process for monitoring progress, adapting plans to changing circumstances and reporting. Plans shall also include the identification of named individuals or positions responsible for the delivery of the plan. There shall be evidence that sufficient resources are available to carry out the plan and the plan is implemented in full.	P&C 2013
<b>Plantation</b>	The land on which oil palm is grown. (See also definition for 'managed area'.)	P&C Review 2018
<b>Prophylactic</b>	A treatment or course of action applied as a preventive	P&C 2013
<b>Rare, threatened or endangered (RTE) species</b>	Species as defined by the High Conservation Value Resource Network (HCVRN).	HCVRN Common Guidance for the Identification of HCVs

Term	Definition	Source
<b>Recruitment fees</b>	Recruitment fees pertain to costs and expenses associated with the recruitment and hiring of the worker, i.e. recruiter and agent service fees, documents processing, employer-required skills and medical testing, training, documentation, visa, work permits, transportation (from sending country to point of entry, and return), administrative and overhead costs.	Dhaka Principles and ILO 181.
<b>Restore</b>	Returning degraded or converted areas within a plantation to a semi-natural state.	P&C 2013
<b>Rights</b>	<p>Rights are legal, social, or ethical principles of freedom or entitlement, in accordance with the International Bill of Rights, and other relevant international human rights instruments including the UN Declaration on the Rights of Indigenous Peoples, UN Guiding Principles on Business and Human Rights, The Global Compact for Safe, Orderly and Regular Migration.</p> <ol style="list-style-type: none"> <li>1. Customary rights: Patterns of long-standing community land and resource usage in accordance with indigenous peoples' customary laws, values, customs and traditions, including seasonal or cyclical use rather than formal legal title to land and resources issued by the State.</li> <li>2. Legal rights: Rights given to individual(s), entities and others through applicable</li> <li>3. User rights: Rights for the use of land and resources that can be defined by local custom, mutual agreements, or prescribed by other entities holding access rights.</li> <li>4. Demonstrable rights: Indigenous peoples, local communities and users may have informal or customary rights in land that are not registered or recognised by the government or national laws. Demonstrable rights are distinguished from spurious claims by direct engagement with local communities, so they have adequate opportunities to justify their claims, and are best ascertained through participatory mapping with the involvement of neighbouring communities.</li> </ol>	<p>P&amp;C 2013</p> <p>UN Refugees &amp; Migrants, Global Compact for Safe, Orderly and Regular Migration , 2018</p> <p>World Bank Operational Policy 4.10</p> <p>From FSC Principles &amp; Criteria</p>

## DEFINITIONS

Term	Definition	Source
<b>Risk assessment</b>	<p>A systematic process of identifying and evaluating the potential risks that may be involved in a projected activity or undertaking.</p> <p>It enables a weighing up of whether enough precautions are in place or whether more shall be done to prevent harm to those at risk, including workers and members of the public.</p>	Adapted from ILO, A 5 step guide for employers, workers and their representatives on conducting workplace risk assessments, 2014
<b>Scheme Smallholder</b>	<p>Farmers, landowners or their delegates that do not have the:</p> <ul style="list-style-type: none"> <li>• Enforceable decision-making power on the operation of the land and production practices; and/or</li> <li>• Freedom to choose how they utilise their lands, type of crops to plant, and how they manage them (whether and how they organise, manage and finance the land).</li> </ul> <p>(See also smallholder and Independent Smallholder).</p>	SHIG
<b>Significant pollutant</b>	Chemical or biological substances which have a substantial adverse impact on water, air or land quality including POME, sewage, and other wastewater, sediment, fertiliser, pesticides, fuels and oil, air pollutants, as guided by national regulations and international standards.	P&C Review 2018
<b>Site</b>	A single functional unit of an organisation or a combination of units situated at one locality, which is geographically distinct from other units.	RSPO 2017 SCCS Standard

Term	Definition	Source
<b>Recruitment fees</b>	Recruitment fees pertain to costs and expenses associated with the recruitment and hiring of the worker, i.e. recruiter and agent service fees, documents processing, employer-required skills and medical testing, training, documentation, visa, work permits, transportation (from sending country to point of entry, and return), administrative and overhead costs.	Dhaka Principles and ILO 181.
<b>Restore</b>	Returning degraded or converted areas within a plantation to a semi-natural state.	P&C 2013
<b>Smallholder</b>	<p>Farmers growing oil palm, sometimes along with subsistence production of other crops, where the family provides the majority of labour and the farm provides the principal source of income and where the planted area of oil palm is usually below 22 ha in size.</p> <p><b>Scheme Smallholder:</b> Farmers, landowners or their delegates that do not have the:</p> <ul style="list-style-type: none"> <li>• Enforceable decision-making power on the operation of the land and production practices; and/or</li> <li>• Freedom to choose how they utilise their lands, type of crops to plant, and how they manage them (whether and how they organise, manage and finance the land).</li> </ul> <p><b>Independent Smallholder:</b> All smallholder farmers that are not considered to be Scheme Smallholders [see definition for Scheme Smallholders] are considered Independent Smallholder farmers and having Oil palm plantation area less or equal to 22 Ha</p>	<p>INNI P &amp; C 2018</p> <p>INNI P &amp; C 2018</p> <p>SHIG</p>

## DEFINITIONS

Term	Definition	Source
<b>Social and Environmental Impact Assessment (SEIA)</b>	An analysis and planning process to be carried out prior to new plantings or operations. This process incorporates relevant environmental and social data, as well as stakeholder consultations, in order to identify potential impacts (both direct and indirect) and to determine whether these impacts can be satisfactorily addressed, in which case the proponent also defines specific actions to minimise and mitigate potential negative impacts.	P&C Review 2018
<b>Stakeholders</b>	An individual or group with a legitimate and/or demonstrable interest in, or who is directly affected by, the activities of an organisation and the consequences of those activities.	P&C 2013
<b>Steep terrain</b>	Areas above 25 degrees or based on a National Interpretation (NI) process.	P&C 2013 Annex 2 Guidance NI
<b>Trafficked labour</b>	Trafficked labour is a form of exploitation that results from the recruitment, transport, transfer, harbouring, and receipt of individuals to perform labour or services through the use of threat or use of force or other forms of coercion, of abduction, of fraud, of deception, of the abuse of power or of a position of vulnerability or of the giving or receiving of payments or benefits.	The UN Palermo Protocols to Prevent, Suppress and Punish Trafficking in Persons.
<b>Transmigrant</b>	A person who migrates from one part of the country to another with a view to being	P&C 2013

Term	Definition	Source
<b>Undue influence</b>	The exertion by a third party of any kind of control such that a person signs a contract or other agreement which, absent the influence of the third party, he would not have signed.	P&C 2013
<b>Unit of certification</b>	The unit of certification shall be the mill and its supply base and shall include both directly managed land (and estates) and Scheme Smallholders and outgrowers, where estates have been legally established with proportions of lands allocated to each.	RSPO Certification Systems 2017
<b>Voluntary isolation</b>	Indigenous peoples in voluntary isolation are indigenous peoples or segments of indigenous peoples who do not maintain sustained contacts with the majority non-indigenous population, and who generally reject any type of contact with persons not part of their own people. They may also be peoples or segments of peoples previously contacted and who, after intermittent contact with the nonindigenous societies, have returned to a situation of isolation and break the relations of contact that they may have had with those societies. In line with the principle of FPIC, RSPO prohibits oil palm expansion in these peoples' territories.	Inter-American Commission on Human Rights, Indigenous Peoples in Voluntary Isolation and Initial Contact in the Americas, 2013
<b>Vulnerable groups</b>	Any group or sector of society that is at higher risk or being subjected to social exclusion, discriminatory practices, violence, natural or environmental disaster, or economic hardship than other groups, such as indigenous peoples, ethnic minorities, migrants, disabled people, the homeless, isolated elderly people, women and children.	P&C Review 2018
<b>Water security</b>	The capacity of a population to safeguard sustainable access to adequate quantities of acceptable quality water for sustaining livelihoods, human well-being, and socio-economic development; for ensuring protection against water-borne pollution and water-related disasters; and for preserving ecosystems in a climate of peace and political stability.	UN Water, Water Security Infographic

## DEFINITIONS

Term	Definition	Source
<b>Whistleblower</b>	Individuals who are employees or former employees who report on illegal, irregular, dangerous or unethical practices or actions by employers which contravene RSPO Code of Conduct and related key documents and who may potentially be at risk of reprisal. This includes individuals who are outside the traditional employee- employer relationship, such as contract workers, temporary workers, consultants, contractors, trainees/interns, volunteers, student workers and former employees	RSPO policy on the protection of HRD, Whistleblowers, Complainants and Community Spokesmen (endorsed by BoG on 24 September, 2018)
<b>Worker</b>	Men and women, migrants, transmigrants, contract workers, casual workers and employees from all levels of the organisation.	P&C Review 2018
<b>Workforce</b>	The total number of workers employed by the management unit either directly or indirectly. This includes contract workers and consultants.	P&C 2013
<b>Young person</b>	Young workers are aged 15, or above the minimum age of employment, but under the age of 18. According to the ILO, "these workers are considered 'children' even where they may legally perform certain jobs."	ILO Minimum Age Convention, 1973 (No. 138), Article 3  ILO Safety and Health in Agriculture Convention, 2001 (No. 184), Article 16

## ANNEX 2: GUIDANCE

### Principle 1: Behave ethically and transparently

Criterion (new)	Guidance
1.1	<p>This concerns management documents relating to environmental, social and legal issues that are relevant to compliance with RSPO Criteria.</p> <p>Management documents comprise the results of FPIC processes, SEIAs, Human Rights Policies including a policy on protection of HRDs/whistleblowers, social programmes avoiding or mitigating negative social impact, social programmes advancing livelihoods, figures of gender distribution within all workers categorised by management, administrative staff and workers (both permanent casual workers, piece rate workers), partnership programmes for Independent Smallholders, education and health in the communities.</p> <p>The auditors will comment on the adequacy of each of the documents listed in the public summary of the assessment report.</p> <p>Examples of commercially confidential information include financial data such as costs and income, and details relating to customers and/or suppliers. Data that affects personal privacy should also be confidential. Ongoing disputes (within or outside of a legal mechanism) can be considered as confidential information where disclosure could result in potential negative outcomes for all parties involved. However, affected stakeholders and those seeking resolution to conflict should have access to relevant information.</p> <p>Examples of information where disclosure could result in potential negative environmental or social outcomes include information on sites of rare species where disclosure could increase the risk of hunting or capture for trade, or sacred sites which a community wishes to maintain as private. The unit of certification shall ensure that sufficient objective evidence exists to demonstrate that the level of measuring and monitoring of the management plan, and information, is appropriate and made available.</p> <p>For 1.1.5: Applicable data privacy laws shall be considered in the gathering, storage, use and distribution and publication of personal information.</p>



Criterion (new)	Guidance
1.1 (Continued)	<p>The following documents shall be available at the unit of certification (but not necessarily limited to) upon request:</p> <ul style="list-style-type: none"> <li>• Land titles/user rights (Criterion 4.4)</li> <li>• Occupational health and safety plans (Criterion 3.6)</li> <li>• Plans and impact assessments relating to environmental and social impacts (Criterion 3.4)</li> <li>• HCV &amp; HCS documentation (Criterion 7.12)</li> <li>• Pollution prevention and reduction plans (Criterion 7.10)</li> <li>• Details of complaints and grievances (Criterion 4.2)</li> <li>• Negotiation procedures (Criterion 4.6)</li> <li>• Continuous improvement plans (Criterion 3.2)</li> <li>• Public summary of certification assessment</li> <li>• Report Human Rights Policy (Criterion 4.1)</li> </ul>
1.2	<p>All levels of the operations will include contractors (e.g. those involved in security). The policy shall include as a minimum:</p> <ul style="list-style-type: none"> <li>• A respect for fair conduct of business</li> <li>• A prohibition of all forms of corruption, bribery and fraudulent use of funds and resources</li> <li>• A proper disclosure of information in accordance with applicable regulations and accepted industry practices</li> </ul> <p>The policy shall be set within the framework of the UN Convention Against Corruption, in particular Article 12.</p> <p>The policy shall cover elements such as: bribery; facilitation payments; guidance and procedure for gifts and hospitality; disclosure of political contributions; guidelines for charitable donations and sponsorships; respect for fair conduct of business; proper disclosure of information in accordance with applicable regulations and accepted industry practices; compliance with existing anti-corruption legislation.</p>

## GUIDANCE

Criterion (new)	Guidance
1.2	<p data-bbox="395 277 1129 297">Commitment to company ethical policies is incorporated in all service contracts.</p> <p data-bbox="395 333 1433 378">There are due diligence procedures in place for the selection and contracting of recruitment agencies and labour intermediaries or suppliers.</p> <p data-bbox="395 414 1422 459">Unethical conduct includes: charging fees to workers, recovering cost of recruitment and transportation against workers' wages, receiving gifts and commissions from labour intermediaries or suppliers.</p>

---

## Principle 2: Operate legally and respect rights

Criterion (new)	Guidance
2.1	<p>Implementing all legal requirements is an essential baseline requirement for all growers whatever their location or size. Relevant legislation includes but is not limited to: regulations governing land tenure and land-use rights, labour, agricultural practices (e.g. chemical use), environment (e.g. wildlife laws, pollution, environmental management and forestry laws), storage, transportation and processing practices. It also includes laws made pursuant to a country's obligations under international laws or conventions (e.g. the Convention on Biological Diversity (CBD), ILO Core Conventions, UN Guiding Principles on Business and Human Rights). Furthermore, where countries have provisions to respect customary law, these will be taken into account.</p> <p>Key international laws and conventions are set out in Annex 1.</p> <p>Contradictions and inconsistencies shall be identified, and solutions suggested. Evidence shall be incorporated as part of implementation of Criterion 2.3.</p> <p>See Indicator 4.4.1 for requirements on legal ownership or lease and authorised use of customary lands.</p> <p>For Indicator 2.1.2: A 'documented system for ensuring legal compliance' can take the form of physical or virtual filing cabinet of applicable laws, regulations and rules with elements of how these laws are interpreted and followed in the running of the operations.</p>
2.2	<p>Contracted parties include:</p> <ul style="list-style-type: none"><li>• Temporary employment, whereby workers are engaged only for a specific period of time, includes fixed-term, project- or task-based contracts, as well as seasonal or casual work, including day labour</li><li>• Short-term contracts; renewable contract</li><li>• Fixed-term, project, or task-based contracts are contractual employment arrangements between one employer and one employee characterized by a limited duration or a pre-specified event to end the contract</li></ul>

## GUIDANCE

Criterion (new)	Guidance
2.2 (Continued)	<ul style="list-style-type: none"> <li>Casual work is the engagement of workers on a very short term or on an occasional and intermittent basis, often for a specific number of hours, days or weeks, in return for a wage set by the terms of the daily or periodic work agreement. Casual work is a prominent feature of informal wage employment in low-income developing countries, but it has also emerged more recently in industrialised economies, particularly in jobs associated with the “on-demand” or ‘gig economy’. (<a href="https://www.ilo.org/global/topics/non-standardemployment/WCMS_534826/lang--en/index.htm">https://www.ilo.org/global/topics/non-standardemployment/WCMS_534826/lang--en/index.htm</a>)</li> </ul>
2.3	For consideration of FFB legality, NIs shall also consider commonly accepted local practices and customs that are generally accepted to be on a par with legal standing or accepted by authorities (e.g. native courts).
2.2 & 2.3	<p><b>New Guidance Note for Criteria 2.2 &amp; 2.3</b></p> <p>In the Indian context, the palm oil mill and oil palm production from a set geography is bounded legally as per the oil palm act set by the local government (ex: Andhra Pradesh Oil Palm Act 1993). The mill has the obligation to accept all the produce and has no right to reject from any farmer from the designated area (zone). The farmer has the obligation to send the product to the designated mill only and no right to send to another mill. Farmer shall get the approval from the Government Horticulture Department to start the oil palm plantation. Upon approval, the mill supplies saplings. The relation between the farmer and the mill starts at the beginning. The farmer and the designated mill in that geography have no choice of any alternatives but to continue.</p>

### Principle 3: Optimise productivity, efficiency, positive impacts and resilience

Criterion (new)	Guidance
3.1	<p data-bbox="395 221 1382 297">Whilst it is recognised that long-term profitability is also affected by factors outside their direct control, top management shall be able to demonstrate attention to economic and financial viability through long-term management planning.</p> <p data-bbox="395 333 1442 378">For plantations on peat, a longer time frame for the projection of the annual replanting programme is needed per Criterion 7.7.</p> <p data-bbox="395 414 1442 490">The unit of certification shall have a system to improve practices in line with new information and techniques. For smallholder schemes, the scheme management shall be expected to provide their members with information on significant improvements. This Criterion is not applicable to Independent Smallholders.</p> <p data-bbox="395 526 839 546">The business or management plan shall contain:</p> <ol data-bbox="414 582 1059 739" style="list-style-type: none"><li>1. Attention to quality of planting materials</li><li>2. Crop projection = Fresh Fruit Bunches (FFB) yield trends</li><li>3. Mill extraction Rates = Oil Extraction Rate (OER) trends</li><li>4. Cost of production = cost per tonne of Crude Palm Oil (CPO) trends</li><li>5. Forecast prices</li><li>6. Financial indicators</li></ol> <p data-bbox="395 775 1436 819">Suggested calculation: Trends in 3-year running mean over the last decade (FFB trends may need to allow for low yield during major replanting programmes).</p> <p data-bbox="395 855 1340 900">Consideration of smallholders shall be inherent in all management planning where applicable (see also Principle 5). For Scheme Smallholders, the content of the business plan may vary from that suggested.</p> <p data-bbox="395 936 1442 981">Where the specific financial details are not known, an estimate of these amounts, or structures for defining those estimates will be made clear within the contract.</p>

## GUIDANCE

Criterion (new)	Guidance
3.1 (Continued)	<p>Management reviews (Indicator 3.1.3) shall include:</p> <ol style="list-style-type: none"> <li>1. Results of internal audits</li> <li>2. Customer feedback</li> <li>3. Process performance and product</li> <li>4. conformity Status of preventive and</li> <li>5. corrective actions Follow-up actions from management reviews</li> <li>6. Changes that could affect the management</li> <li>7. system Recommendations for improvement</li> </ol>
3.2	<p>For the action plan for continuous improvement, indicators may include but not be limited to:</p> <ol style="list-style-type: none"> <li>1. Optimising the yield of the supply base.</li> <li>2. Reduction in use of pesticides (Criterion 7.2)</li> <li>3. Environmental impacts (Criteria 3.4, 7.6 and 7.7)</li> <li>4. Waste reduction (Criterion 7.3)</li> <li>5. Pollution and greenhouse gas (GHG) emissions (Criterion 7.10)</li> <li>6. Impacts on communities, workers and smallholders (Principle 6)</li> <li>7. Integrated management of HCV-HCS, peatland and other conservation areas (Criteria 7.7 and 7.12)</li> </ol> <p>Where applicable, review shall include Scheme Smallholders</p> <p>The unit of certification shall have a system to improve practices in line with new information and techniques, and a mechanism for disseminating this information throughout the workforce. For smallholders, there shall be systematic guidance and training for continuous improvement.</p>

Criterion (new)	Guidance
3.3	<p>Mechanisms to check implementation could include documentation of management systems and internal control procedures (see Criterion 2.1).</p> <p>SOP and documentation for mills shall include relevant supply chain requirements (see SCCS section under Principle 3).</p> <p>The unit of certification, while working with third party suppliers of FFB on traceability and legality, shall use the opportunity to distribute suitable information on BMPs.</p>
3.4	<p>The terms of reference of the SEIA shall be defined. Ideally, the SEIA shall be carried out by accredited independent experts, in order to ensure an objective process. The assessment (SEIA) shall include, but is not limited to:</p> <ol style="list-style-type: none"> <li>1. Assessment of the impacts of all major planned activities, including land clearing, planting, replanting, pesticide and fertiliser use, mill operations, roads, drainage and irrigation systems and other infrastructure</li> <li>2. Assessment of the impacts on HCVs, biodiversity and RTE species, including beyond concession boundaries and any measures for the conservation and/or enhancement of these</li> <li>3. Assessment of the potential effects on adjacent natural ecosystems of planned developments, including whether development or expansion will increase pressure on nearby natural ecosystems</li> <li>4. Identification of watercourses and wetlands and assessment of potential effects on hydrology and land subsidence of planned developments. Measures shall be planned and implemented to maintain the quantity, quality and access to water and land resources</li> <li>5. Baseline soil surveys and topographic information, including the identification of steep terrain, marginal and fragile soils, areas prone to erosion, degradation, subsidence, and flooding</li> <li>6. Analysis of the type of land to be used (forest, degraded forest, peatlands, cleared land, etc.) Assessment of land ownership and user rights</li> <li>8. Assessment of current land use patterns</li> <li>9. Assessment of impacts on people's amenity</li> <li>10. Assess impacts on employment, employment opportunities or from changes of employment terms</li> <li>11. A cost-benefit analysis on social aspects</li> </ol>

## GUIDANCE

Criterion (new)	Guidance
3.4 (Continued)	<ol style="list-style-type: none"> <li>12. Assessment of potential social impacts on surrounding communities of a plantation, including an analysis of potential effects on livelihoods, and differential effects on women versus men, ethnic communities, and migrant versus longterm residents</li> <li>13. Assessment of salient risk of human rights violations</li> <li>14. Assessment of the impacts on all dimensions of food and water security including the right to adequate food, and monitoring food and water security for affected communities</li> <li>15. Assessment of activities which may impact air quality or generate significant GHG emissions</li> </ol> <p>For smallholder schemes, the scheme management has the responsibility to undertake an impact assessment and to plan and operate in accordance with the results.</p> <p>Additional information on SEIA can be found in various external sources such as HCSA Toolkit Module 3 and the International Finance Corporation (IFC)'s Guide to Biodiversity for Private Sector: The Social and Environmental Impact Process.</p> <p>The review of the monitoring and management plan shall be done (once every two years) internally or externally.</p> <p>Management documents may comprise social programmes avoiding or mitigating adverse social impact including human rights, social programmes advancing community livelihoods and gender equality, partnership programmes for Independent Smallholders, education and health in the communities.</p>
3.5	<p>Refer to National Law/Regulation or ILO Convention 155 for those countries without national Occupational Safety and Health Law/Regulation at a minimum.</p>



## Criterion (new)

## Guidance

3.6

**Training content:** Workers shall be adequately trained on: the health and environmental risks of pesticide exposure; recognition of acute and long-term exposure symptoms including the most vulnerable groups (e.g. young workers, pregnant women); ways to minimise exposure to workers and their families; and international and national instruments or regulations that protect workers' health.

The training programme shall include productivity and management practice, and be appropriate to the scale of the organisation. The programme shall enable everyone to fulfil their jobs and responsibilities in accordance with documented procedure.

**Training participants:** Training shall be given to all staff and workers including women smallholders and women plantation workers, within the unit of certification, as well as contract workers. The unit of certification shall demonstrate training activities for Scheme Smallholders who provide FFB on a contracted basis.

Workers on smallholder plots also need adequate training and skills, and this can be achieved through extension activities of the unit of certification that purchase fruit from them, by smallholders' organisations, or through collaboration with other institutions and organisations.

For individual scheme smallholder operations, training records shall not be required for their workers, but anyone working on the farm shall be adequately trained for the job they are doing.

## Principle 4: Respect community and human rights and deliver benefits

Criterion (new)	Guidance
4.1	<p>All levels of operations will include contractors (e.g. those involved in security). The UN Guiding Principles on Business and Human Rights notes that:</p> <p><i>“The responsibility of business enterprises to respect human rights refers to internationally recognised human rights –understood, at a minimum, as those expressed in the International Bill of Human Rights and the principles concerning fundamental rights set out in the International Labour Organization’s Declaration on Fundamental Principles and Rights at Work.”</i></p> <p>The UN Guiding Principles on Business and Human Rights also note that the responsibility of business enterprises to respect human rights exists independently of nation states’ abilities and/or willingness to fulfil their own human rights obligations and exists over and above compliance with national laws and regulations protecting human rights. (See “The corporate responsibility to respect human rights” in the <i>UN Guiding Principles on Business and Human Rights</i>).</p> <p>The RSPO Human Rights Working Group will provide additional guidance to identify, prevent, mitigate and address human rights issues and impacts. The resulting guide will identify the relevant issues on human rights to all RSPO members.</p> <p>Details on requirements to protect the rights of HRDs, including complainants, whistleblowers and community spokespersons, are set out in the RSPO Policy on the Protection of Human Rights Defenders, Whistleblowers, Complainants and Community Spokespersons.</p>

Criterion (new)	Guidance
4.2	<p>Dispute resolution mechanisms shall be established through open and consensual agreements with relevant affected parties.</p> <p>Complaints shall be dealt with by mechanisms such as Joint Consultative Committees (JCC), with gender representation</p> <p>and, where relevant, migrant worker representation. Grievances may be internal (employees) or external. For Scheme and Independent Smallholders, refer to the current RSPO Guidance Documents for Scheme and Independent Smallholders.</p> <p>Where a resolution is not found mutually, complaints can be brought to the attention of the RSPO Complaints System.</p> <p>Refer to helpful texts for guidance, such as the UN Human Rights Commission (HRC) endorsed '<i>Guiding Principles on Business and Human Rights: Implementing the UN "Protect, Respect and Remedy" Framework</i>', 2011.</p>
4.3	<p>Contributions to local sustainable development shall be based on the results of consultation with local communities and shall have long term economic, social and/or environmental benefits. Such consultation shall be based on the principles of transparency, openness and participation, and shall encourage communities to identify their own priorities and needs, including the different needs of men, women and minority/vulnerable groups.</p> <p>The unit of certification may also seek partnerships from non-governmental organisations (NGOs) and civil society organisations (CSOs) to identify key environmental and/or social issues that are prevalent in the community and develop and implement solutions to address these issues as part of their contributions to sustainable development.</p>

## GUIDANCE

Criterion (new)	Guidance
4.3 (Continued)	<p>Some examples of contributions to local sustainable development could be, but are not limited to:</p> <ul style="list-style-type: none"> <li>a) Poverty reduction</li> <li>b) Access to health and wellbeing</li> <li>c) Access to quality education</li> <li>d) Access to clean water and sanitation</li> <li>e) Conservation or restoration of natural resources</li> <li>f) Gender equality programmes</li> <li>g) Support/enhance/secure food and water security</li> </ul> <p>Where candidates for employment are of equal merit, preference shall always be given to members of local communities. Positive discrimination shall not be recognized as conflicting with Criterion 6.1.</p>
4.4	<p>All indicators will apply to current operations, but there are exceptions for long- established plantations which may not have records dating back to the time of the decision making, in particular for compliance with Indicators 4.4.2 and 4.4.3.</p> <p>Where there are legal or customary rights over land, the unit of certification shall demonstrate that these rights are understood and are not being threatened or reduced. This Criterion shall be considered in conjunction with Criterion 4.5, 4.6 and 4.7. Where customary rights areas are unclear these shall be established through participatory mapping exercises involving affected parties (including neighbouring communities and local authorities).</p> <p>This Criterion allows for negotiated agreements to compensate other users for lost benefits and/ or relinquished rights. Negotiated agreements shall be non-coercive and entered into voluntarily, carried out prior to new investments or operations, and based on an open sharing of all relevant information. The representation of communities shall be transparent and in open communication with other community members.</p>

Criterion (new)	Guidance
4.4 (Continued)	<p>Relevant legal arrangements may include negotiated benefit-sharing agreements, joint venture agreements, legal representation on management boards, restrictions on prior land use, co-management arrangements, smallholder contracts, rental and leasehold arrangements, royalty payments, and the implications of land acquisition and permits for community land tenure, use and access rights.</p>
4.5	<p>The unit of certification can, through compliance with RSPO criteria demonstrates its commitment to support the UN Sustainable Development Goals (especially SDGs 2, 6 and 15).</p> <p>The unit of certification shall support the implementation of existing national strategies with regard to food and water security, and not contradict them by any of its business activities.</p> <p>The unit of certification shall recognize national and/or international natural disaster risk assessments, strategies and maps in the management plan/strategy for the managed areas. The unit of certification shall inform suppliers and communities in the concerned region about natural risks and provide support in case of strong adverse natural and human made disasters.</p> <p>This activity shall be integrated with the SEIA required by Criterion 3.4.</p> <p>Within the FPIC process, measures to balance potential negative impacts on food and water security for local communities shall be discussed and agreed between the unit of certification and the local communities. These measures and their proposed implementation features (what, how, how long, recipients,</p> <p>In cases where the availability, access, quality and stability of food and water is negatively affected by the planned operations, mitigation and relief measures shall be agreed.</p>

Criterion (new)	Guidance
4.5 (Continued)	<p>Where applicable, in communities resettled in accordance with FPIC, the unit of certification shall monitor the food and water security situation through a screening process and, for example, through continuous dialogue, to ensure local food and water security.</p> <p>Efforts shall be made to consider population dynamics. The set of measures is to be reviewed regularly (proposed biannually) to reflect on changes in needs and capacities and the resources available.</p> <p>The unit of certification shall not restrict access to markets for local communities through its operations.</p> <p>The unit of certification shall assess water catchments in order to identify key water risks or shared challenges (see HCV 4). The unit of certification shall regularly monitor their operations' impacts on water availability and quality.</p> <p>Where new plantings are considered to be acceptable, management plans and operations shall maintain sacred sites.</p> <p>Agreements with indigenous peoples, local communities and other stakeholders shall be made without coercion or other undue influence (see Guidance for Criterion 4.4). Relevant stakeholders include those affected by or concerned with the new plantings.</p> <p>Customary and user rights will be demonstrated through participatory user mapping as part of the FPIC process.</p> <p>FPIC is a guiding principle and shall be applied to all RSPO members throughout the supply chain. Refer to RSPO approved FPIC guidance ('FPIC and the RSPO; A Guide for Members', October 2015).</p>

4.6

Where there is a conflict on the condition of land use as per land title, the unit of certification shall show evidence that necessary action has been taken to resolve the conflict with relevant parties.

A mechanism shall be in place to resolve any conflict (Criteria 4.2 and 4.6). Where operations overlap with other rights holders, the unit of certification shall resolve the issue with the appropriate authorities, consistent with Criteria 4.2 and 4.6.

- Guidance Note for Criteria 4.6 & Indicator 4.6.3

#### **Laws In context of India**

The Hindu Succession (Amendment) Act, 2005, an amendment to the Hindu Succession Act, 1956 effective from Sep 2005 and major amendments are given below

- Daughter shall have the same rights in the coparcenary property as she would have had she been a son;
- The daughter shall be subject to the same liability in the said coparcenary property as that of a son;
- The daughter shall be allotted the same share as is allotted to a son;
- The share of the per-deceased son or a per-deceased daughter shall be allotted to the surviving child of such per-deceased son or of such per-deceased daughter;
- The share of the per-deceased child of a per-deceased son or of a per-deceased daughter shall be allotted to the child of such per-deceased child of the per-deceased son or a per-deceased daughter.

Furthermore, after the commencement of the Hindu Succession (Amendment) Act, 2005, the pious obligation of a son, grandson or great-grandson for the recovery of any debt due from his father, grandfather or great-grandfather under the Hindu law, came to an end

## Principle 5: Support smallholder inclusion

Criterion (new)	Guidance
5.1	<p data-bbox="394 322 1406 400">Fair prices for FFB will be equal to or above the prices as established by government or government endorsed initiatives, where applicable. Where not applicable, the following elements shall be considered subject to prevailing commodity prices:</p> <ol data-bbox="416 434 1442 538" style="list-style-type: none"> <li data-bbox="416 434 1417 482">1. Cost incurred by smallholders where applicable (e.g. fertiliser, seeds, pesticides, transport of FFB, land use permit, land ownership fees, land preparation, labour costs and other costs related to FFB production);</li> <li data-bbox="416 490 1442 538">2. Unexpected and unpredictable environmental and climate related risk costs including the occurrence of new pests for which treatment is not yet available, climate change effects or extreme weather conditions.</li> </ol> <p data-bbox="394 572 898 589"><i>Source: 2012 FAO Guiding Principles Responsible Contract Farming</i></p> <p data-bbox="394 622 1422 673">This shall also be applied to situations where the unit of certification functions as the group manager for groups certified under group certification.</p> <p data-bbox="394 706 1433 813">Transactions with smallholders shall consider issues such as the role of middlemen, transport and storage of FFB, quality and grading. The need to recycle the nutrients in FFB (see Criterion 7.5) shall also be considered; where it is not practicable to recycle wastes to smallholders, compensation for the value of the nutrients exported can be made through the FFB price.</p> <p data-bbox="394 846 1422 891">Smallholders shall have access to the grievance procedure under Criterion 4.2 if they consider that they are not receiving a fair price for FFB, whether or not middlemen are involved.</p> <p data-bbox="394 925 1437 975">If the unit of certification requires smallholders to change practices to meet the RSPO P&amp;C, consideration shall be given to the costs of such changes, and the possibility of advance payments for FFB can be considered.</p>



## Criterion (new)

## Guidance

5.2

RSPO will develop guidance on smallholder support (a separate RSPO Independent Smallholder Standard is currently under development as of the printing of this standard).

The consultation may include collection centres or other parties like representative organisations, where applicable.

In particular for Scheme Smallholders, support programmes are based on long term relations.

When the unit of certification assesses the eligibility of the requested support by Independent Smallholders, the following factors can be taken into account and are explained to and understood by the smallholders:

- Expected continued supply of FFB to the mill
- Readiness of smallholders to implement the improvement programmes

Specific elements on RSPO certification may include:

- Socialization on RSPO
- H&S training
- FPIC
- HCV

The delivery of the support services can include but is not limited to cooperatives, agents, collection centres and representative organisations.

## GUIDANCE

## Principle 6: Respect workers' rights and conditions

Criterion (new)	Guidance
6.1	<p>The non-discriminatory requirements are applied to all workers, regardless of contractual status.</p> <p>Examples of compliance can be appropriate documentation (e.g. job advertisements, job descriptions, appraisals, etc.), and/or information obtained via interviews with relevant stakeholders such as affected groups which may include women, local communities, foreign workers and migrant workers, etc.</p> <p>Notwithstanding national legislation and regulation, medical conditions shall not be used in a discriminatory way. The grievance procedures detailed in Criterion 4.2 apply. Positive discrimination to provide employment and benefits to specific communities is acceptable as part of negotiated agreements.</p> <p>Examples of evidence for Indicator 6.1.2 could include contract between employer and agency; contract between worker and agency; clear company policy and recruitment procedures; confirmation by workers and agency that no recruitment fees are charged.</p> <p>Foreign and migrant workers shall not pay anything that a local worker is not required to pay, unless mandated by law. A worker shall not be selected for the job on the basis of their capacity to pay.</p>
6.2	<p>Elements in the calculation of a decent standard of living shall include food, water, housing, education, healthcare, transport, clothing and other essential needs, including provision for unexpected effects, in accordance with the GLWC methodology.</p>

Criterion (new)	Guidance
-----------------	----------

6.2 (Continued)

The list of essential needs (that will be considered for the non-food, non-housing element), and the costs/values associated with these elements, will be provided by the RSPO.

Where a GLWC living wage standard, or one that fulfils the basic requirements of the RSPO-endorsed living wage methodology, has been established in the country or region of operation, this shall be used as benchmark.

Where there are industry-established benchmarks of living wage, these can be used as a basis, as long as the elements of the DLW definition or their equivalencies have been considered.

For countries where no living wage standard is established, the RSPO-endorsed benchmark shall be followed, until such time that a GLWC-developed benchmark for the country is in place (see procedural note in Indicator 6.2.6).

A written policy, committing to payment of a living wage shall be in place.

The implementation plan shall have specific targets, and a phased-implementation process shall be in place, including the following:

- An assessment is conducted to determine prevailing wages and in-kind benefits already being provided to workers
- There is annual progress on the implementation of living wages
- Where a minimum wage, based on equivalent basket of goods, is stipulated in Collective Bargaining Agreements (CBAs), this shall be used as the foundation for the gradual implementation of the living wage payment
- The unit of certification may choose to implement the living wage payment in a specific section as a pilot project; the pilot will then be evaluated and adapted before an eventual scale-up of the living wage implementation

Without disrupting the wage distribution, employers can provide more or better in-kind benefits to increase the living standards of their workers, as long as it is agreed upon by the trade union/worker representatives.

Criterion (new)	Guidance
6.3	<p>The right of staff and workers, including migrant and transmigrant workers and contract workers, to form associations and bargain collectively with the unit of certification shall be respected, in accordance with Conventions 87 and 98 of the ILO.</p> <p>Collective bargaining is encouraged to include terms and conditions relevant to workers' rights, but also to the workers and families' rights to access health care, education, nutritious food, safety/protection equipment, energy, and could include a clear mechanism of grievances and remedy.</p> <p>Foreign workers shall be encouraged to join unions. Where the right to freedom of association and collective bargaining are restricted under law, the unit of certification publishes a statement that facilitates parallel means of independent and free association and bargaining for all such personnel.</p>
6.4	<p>Service contracts and supplier agreements refer to those that the unit of certification enters into and has influence over; rather than for agreements that cover services of infrastructure set up, such as telephone or electricity.</p> <p>The unit of certification shall clearly define the minimum working age, together with working hours. Only workers above the minimum school leaving age in the country or who are at least 15 years old may be employed. The minimum age of workers will not be less than stated under national regulations. Any hazardous work shall not be done by those under 18, as per ILO Convention 138.</p> <p>Work in family farms, when the farm is contracted to or provides business to another entity, is prohibited. Farm work is only accepted when it is for the family's own consumption.</p> <p>Child labour is not exacted only by employers, and children do not have to be in an employment relationship with a third-party employer to be in child labour and to suffer its consequences.</p>

Criterion (new)	Guidance
6.4 (Continued)	<p>Age verification documents include a government recognised photographic identification document, where available.</p> <p>Examples of remediation are: procedures to assist underage workers found to be working; to ensure the children are taken out of the work site, parents/guardians are informed, medical testing to assess physical and mental health is conducted; and the unit of certification ensures that the children are enrolled in school.</p>
6.5	<p>There shall be a clear policy developed in consultation with staff and workers, contract workers and other relevant stakeholders, and the policy shall be publicly available. Progress in implementing the policy shall be regularly monitored, and the results of monitoring activities shall be recorded.</p> <p>These policies shall include education for women and awareness of the workforce. There shall be programmes provided for particular issues faced by women, such as violence and sexual harassment in the workplace. This committee, which shall include representatives from all areas of work, will consider matters such as: training on women’s rights; counseling for women affected by violence; child care facilities to be provided by the unit of certification; women to be allowed to breastfeed up to nine months before resuming chemical spraying or usage tasks; and women to be given specific break times to enable effective breastfeeding.</p> <p>For 6.5.3: The Gender Committee can support the assessment.</p> <p>Adequate space and paid breaks shall be provided to enable mothers with infants 24 months or younger to breastfeed or express and store breast milk with privacy.</p>
6.6	<p>Migrant workers shall be legalised, and a separate employment agreement shall be drawn up to meet immigration requirements for foreign workers and international standards. Any deductions made shall not jeopardise a DLW.</p> <p>Workers may voluntarily want to have their passports or identity documents held by the management for safekeeping purposes. In such cases, the documents shall be returned to the workers upon request. There shall be evidence of due diligence in applying this to all sub-contract workers and suppliers.</p>

Criterion (new)	Guidance
6.6 (Continued)	<p data-bbox="394 258 919 281">National guidance shall be used on contract substitution.</p> <p data-bbox="394 316 1410 452">Workers shall enter into employment voluntarily and freely, without the threat of a penalty, and shall have the freedom to terminate employment without penalty given reasonable notice or as per agreement. This is in accordance with ILO conventions: Forced Labour Convention, 1930 (No. 29) ; Protocol of 2014 to the Forced Labour Convention, 1930 (P029) ; Abolition of Forced Labour Convention, 1957 (No. 105) ; Forced Labour Recommendation, 2014 (No. 203)</p> <p data-bbox="394 488 753 510">The specific labour policy shall include:</p> <ul data-bbox="416 546 1410 740" style="list-style-type: none"> <li>• Statement of the non-discriminatory practices</li> <li>• No contract substitution</li> <li>• Post-arrival orientation programme to focus especially on language, safety, labour laws, cultural practices etc.</li> <li>• Decent housing to be provided in accordance with national law or in their absence ILO Recommendation 115.</li> <li>• Fees related to recruitment and hiring of migrant workers</li> </ul>
6.7	<p data-bbox="394 804 708 826"><b>Guidance Note for Indicator 6.7.4</b></p> <p data-bbox="394 861 1430 996">In the context of India some farm workers/Labours doesn't work on the oil palm plantations on permanent basis and they work occasionally as and when required called as temporary/occasional workers and as per the regulations they cannot be covered under the regular Insurance schemes. As per the INNI NIWG discussion outcome for temporary workers access to medical care to be provided in case of any emergency while all other permanent workers will be covered under regular Insurance.</p>

## Principle 7: Protect, conserve and enhance ecosystems and the environment

Criterion (new)	Guidance
7.1	<p>The unit of certification shall apply recognised IPM techniques, incorporating cultural, biological, mechanical and physical methods to minimise the use of chemicals. Native species shall be used in biological control where possible.</p> <p>In specific cases for the control of pests and diseases by fire, as per regulations, there shall be evidence of prior approval of the controlled burning as specified by the relevant authorities in the 'Guidelines for the Implementation of the ASEAN Policy on Zero Burning' 2003, or comparable guidelines or regulations in other regions.</p>
7.1	<p>The RSPO has identified some examples of alternatives to pesticide and herbicide use, which include those listed in the 'Research Project on Integrated Weed Management Strategies for Oil Palm', CABl, April 2011.</p> <p>Due to problems in the accuracy of measurement, monitoring of pesticide toxicity is not applicable to Independent Smallholders.</p> <p>The justification shall consider less harmful alternatives and IPM. Justification of the use of such pesticides will be included in the public summary report. Measures to avoid the development of resistance (such as pesticide rotations) shall be applied.</p> <p>Due diligence is understood as the process through which enterprises shall identify, assess, mitigate, prevent and account for how they verify the emergency use of pesticides that are categorised as World Health Organisation Class 1A or 1B, or that are listed by the Stockholm or Rotterdam Conventions, and paraquat, which are banned from use in RSPO, except in very specific situations. The nature and extent of due diligence will be affected by factors such as the size of the area where the pesticides shall be applied, the context and location of the application, the nature of products or services, and the severity of actual and potential adverse impacts which will be caused by the use of the high hazardous pesticides.</p>

Criterion (new)	Guidance
7.2 (Continued)	<p>The due diligence shall refer to:</p> <ol style="list-style-type: none"> <li>Judgment of the threat and verification of why this is a major threat</li> <li>Why there is no other alternative which can be used</li> <li>Which process was applied to verify that there is no other less hazardous alternative</li> <li>What the process is to limit the negative impacts of the applications</li> <li>Estimation of the timescale of the application and which steps are taken to limit the application to a singularity.</li> </ol> <p>Recognized best practice includes: storage of all pesticides as prescribed in the ‘FAO International Code of Conduct on the distribution and use of pesticides’ and its guidelines and supplemented by relevant industry guidelines in support of the International Code (see Annex 3).</p> <p><b>Guidance Note for Indicator 7.2.4</b></p> <p>Central Insecticides Board and Registration Committee (CIBRC) is administered by the Ministry of Agriculture, Government of India under the Insecticides Act, which was passed in 1968 to regulate the import, manufacture, sale, transport, distribution and use of insecticides with a view to prevent risks to human</p>
7.3	<p>The waste management and disposal plan shall include measures for:</p> <ul style="list-style-type: none"> <li>Improving the efficiency of resource utilization and recycling potential wastes as nutrients or converting them into value-added products (e.g. through animal feeding programmes).</li> <li>Appropriate management and disposal of hazardous chemicals and their containers. Surplus chemical containers shall be reused, recycled or disposed of in an environmentally and socially responsible way using best available practices (e.g. returned to the vendor or cleaned using a triple rinse method), in such a way that there is no risk of contamination of water sources or risk to human health. The disposal instructions on the manufacturers' labels shall be adhered to.</li> </ul>



Criterion (new)	Guidance
7.3 (Continued)	<p>The unit of certification is encouraged to improve the waste management in surrounding neighbourhoods. Where there are no options for non-toxic and non-hazardous domestic waste collection by local government services, landfills may be required as a solution for disposal.</p> <p>Where landfills are used, appropriate guidelines shall be followed, which includes being:</p> <ul style="list-style-type: none"> <li>• Only for domestic and household waste, where inorganic waste is minimised</li> <li>• Located away from water sources, people and communities, and outside conservation areas</li> <li>• Properly covered, with clear demarcation and signage to avoid disturbance.</li> </ul>
7.4	<p>Long-term fertility depends on maintaining the structure, organic matter content, nutrient status and microbiological health of the soil. Nutrient efficiency shall take account of the age of plantations and soil conditions. The nutrient recycling strategy shall include any use of biomass for by-products or energy production and shall drive to minimise inorganic fertiliser use.</p>
7.5	<p>Techniques that minimise soil erosion are well known and shall be adopted, where appropriate. These shall include practices such as ground cover management, biomass recycling, terracing, and natural regeneration or restoration instead of replanting.</p>
7.6	<p>These activities can be linked to the SEIA (see Criterion 3.4) but need not be done by independent experts. Soil suitability maps or soil surveys shall be appropriate to the scale of operation and shall include information on soil types, topography, hydrology, rooting depth, moisture availability, stoniness and fertility to ensure long-term sustainability of the development.</p> <p>Soils requiring appropriate practices shall be identified (see Criteria 7.6 and 7.7). This information shall be used to plan planting programmes, etc.</p> <p>Measures shall be planned to minimise erosion through appropriate use of heavy machinery, terracing on slopes, appropriate road construction, rapid establishment of cover, protection of riverbanks, etc.</p>

## GUIDANCE

Criterion (new)	Guidance
7.6 (Continued)	<p>Measures shall be planned to minimise erosion through appropriate use of heavy machinery, terracing on slopes, appropriate road construction, rapid establishment of cover, protection of riverbanks, etc.</p> <p>Areas located within the plantation perimeters that are considered unsuitable for long-term oil palm cultivation shall be delineated in plans and included in operations for conservation or rehabilitation as appropriate (see Criteria 7.6 and 7.7).</p> <p>Assessing soil suitability is also important for smallholders, particularly where there are significant numbers operating in a particular location.</p> <p>Information shall be collected on soil suitability by the unit of certification if planning to purchase FFB from potential developments of Independent Smallholders in a particular location. The unit of certification shall assess this information and provide information to Independent Smallholders on soil suitability, and/or in conjunction with relevant government/ public institutions and other organizations (including NGOs) provide information in order to assist Independent Smallholders to grow oil palm sustainably.</p>
7.7	<p>The unit of certification is encouraged to map the peatlands within the supply base to enable monitoring and promotion of BMPs. For Indicator 7.7.3: For existing plantings on peat, the water table shall be maintained at an average of 50 cm (between 40 cm and 60 cm) below ground surface unless required to be higher by national regulations, measured with groundwater piezometer readings, or an average of 60 cm (between 50 cm and 70 cm) below ground surface as measured in water collection drains, through a network of appropriate water control structures (e.g. weirs, sandbags, etc.) in fields, and watergates at the discharge points of main drains.</p> <p>For Indicator 7.7.3: Monitoring of subsidence shall be undertaken in all drained peat areas in the plantation including areas adjacent to the plantation where water tables may be impacted by drainage associated with the plantation.</p>

## Criterion (new)

## Guidance

7.8

The water management plan shall include:

- Consideration of relevant stakeholders, their water use, and water resource availability
- Taking account of the efficiency of use and renewability of sources
- Ensuring that the use and management of water by the unit of certification does not result in adverse impacts on other users within the catchment area, including local communities and customary water users
- Aiming to ensure local communities, workers and their families have access to adequate, clean water for drinking, cooking, bathing and cleaning purposes
- Avoiding contamination of surface and ground water through runoff of soil, nutrients or chemicals, or as a result of inadequate disposal of waste including POME.

Refer to the 'RSPO Manual on BMPs for the management and rehabilitation of riparian reserves' (April 2017).

Where national regulations do not specify mill effluent requirements or discharge quality, these shall be defined at NI level.

7.9

Renewable energy use per tonne of CPO or palm product in the mill shall be monitored and reported.

Direct fossil fuel use per tonne of CPO or FFB shall be monitored.

Energy efficiency shall be taken into account in the construction or upgrading of all operations. The unit of certification shall assess the direct energy use of their operations, including fuel and electricity, and energy efficiency of its operations. This shall include estimation of fuel use by on-site contract workers, including all transport and machinery operations. The feasibility of collecting and using biogas shall be studied where relevant.

7.10

The unit of certification shall only establish new plantings on mineral soils, in low carbon stock areas, and cultivated areas (including rubber and tree crops), which the current users are willing to develop into oil palm.

Plans prepared by the unit of certification shall specify actions to be taken to reduce GHG emissions including for example, adopting low-emission management practices for both mills (e.g. better management of palm oil mill effluent (POME), efficient boilers etc.) and plantations (e.g. optimal fertiliser use, energy efficient transportation, good water management, restoration of peatlands and conservation areas). Reference can be made to the RSPO Compilation of BMPs to Reduce Total Emissions from Palm Oil Production. This Criterion covers plantations, mill operations, roads and other infrastructure including access and perimeter canals and roads.

Criterion (new)	Guidance
7.11	Extension/training programmes for smallholders may be necessary.
7.12	<p><b>For Indicator 7.12.2</b> HCV assessments conducted as part of integrated HCV-HCS assessments, shall follow the HCVRN procedures, using HCVRN ALS approved assessors for HCV assessments for new plantings, in line with the current version of the Common Guidance on HCV Identification provided by the HCVRN or national HCV toolkits.</p> <p>NIs of the globally-applicable HCV definitions may be used to assist with implementation of the HCVA. The globally applicable HCV definitions provided in the Common Guidance take precedence in any cases where a conflict is perceived with a NI.</p> <p>Where landscape level HCV and/or HCS maps have been developed, these shall be taken into account in project planning, whether or not such maps form part of government land use plans.</p> <p>Further guidance for implementation of ‘wider landscape-level considerations’ and other natural ecosystems will be developed by the BHCV WG. This will include reference to Key Biodiversity Areas (KBAs), which are identified under a Global Standard (IUCN 2016) and shall be identified through an HCV assessment.</p> <p><b>For Indicator 7.12.4</b> Refer to relevant guidance documents on RSPO and HCVRN websites.</p> <p>The integrated management plan shall be developed in collaboration with other stakeholders active in that landscape before and during the project implementation. It shall be adaptive to changes in HCVs. Evidence of attempted collaboration efforts shall be documented and available. Such collaborative plans and areas shall include but are not limited to:</p> <ul style="list-style-type: none"> <li>Identifying, protecting and/or enhancing forest connectivity important for biodiversity, ecosystem services, or watershed protection</li> </ul>

## 7.12 (Continued)

- Minimising hydrological impacts to the landscape related to or arising from drainage systems and access roads or canals linked to the plantation
- Ensuring that any legal requirements relating to the protection of species or habitats are met
- Avoiding damage to and deterioration of HCV habitats, for example by ensuring that HCV areas are connected, corridors are conserved, and buffer zones around HCV areas are created
- Protecting and managing other conservation areas including watercourses and wetlands, peatlands, riparian zones, and steep slopes Controlling any illegal or inappropriate hunting, fishing or collecting activities, and encroachment
- Developing responsible measures to resolve human-wildlife conflicts (e.g. incursions by elephants).

**For Indicator 7.12.5**

Decisions will be made in consultation with the affected communities.

Areas required by affected communities to meet their basic needs, taking into account potential positive and negative changes in livelihoods resulting from proposed operations, shall be identified in consultation with the communities and incorporated into HCV and HCS assessments and management plans.

The unit of certification shall consider a variety of land management and tenure options to secure HCV management areas in ways that also secure local peoples' rights and livelihoods. Some areas are best allocated to community management and secured through customary or legal tenures; in other cases, co-management options may be considered.

Where communities are asked to relinquish rights so that HCVs can be protected or enhanced by the companies or state agencies, then great care needs to be taken to ensure that communities retain access to adequate land and resources to secure their basic needs; all such relinquishment of rights must be subjected to their FPIC.

**For Indicator 7.12.7**

Refer to HCVRN Common Guidance for HCV Management and Monitoring document

## ANNEX 3: KEY INTERNATIONAL LAWS AND CONVENTIONS APPLICABLE TO THE PRODUCTION OF PALM OIL

The following is a listing of the key international laws and conventions applicable to the production of palm oil which with the ratification/signatory status for India. The RSPO P&C strive to achieve international best practice so all RSPO members must comply with the relevant parts of the P&Cs where they refer to the standards and/or conventions even if they have not been ratified nationally. Nonetheless, utmost care has been taken to prepare the below listing and ratification/signatory status of India against the International laws & conventions but the following listings are to be considered as non-exhaustive and merely serve as guidance. So, Each member shall conduct their own research in respect of laws currently in force in ensuring compliance with the same and in meeting the obligations expected of a Member under the RSPO P&C.

Theme	Referenced in following P&C	International Standards			Key Provisions	Summary of Protection	India Signatory (s) or Ratified (R)
		Convention	Declaration	Guiding Principles/ UN Outcome Documents			
Ethical Business Conduct	1.1 1.2 2	United Nations Convention against Corruption (2000)			Art 12	Promoting the development of standards and procedures to safeguard the integrity of private entities, including codes of conduct, for business activities and preventing conflict of interest. Promoting transparency. Ensuring that companies have sufficient internal auditing controls to prevent corruption.	Ratified (10 May 2011)
	1.2 2.1 2.2	Private Employment Agencies Convention 1997 (No 181)				Covers protection for workers who are employed through third party and/or private employment agencies.	Not Ratified

### Annex 3

## KEY INTERNATIONAL LAWS AND CONVENTIONS APPLICABLE TO THE PRODUCTION OF PALM OIL

Theme	Referenced in following P&C	International Standards			Key Provisions	Summary of Protection	India Signatory (s) or Ratified (R)
		Convention	Declaration	Guiding Principles/ UN Outcome Documents			
Respect for Human Rights	4.1 4.2		Declaration on the Rights of Human Rights Defenders			Contains human rights standards enshrined in other international instruments that are legally binding for the protection of human rights, including HRDs.	
	4 5 6			United Nations Guiding Principles on Business and Human Rights (2011)	Principles 11-24	Respect Human rights, by avoiding and/or mitigating negative impacts regardless of their organisation size, sector of operation or ownership.	Adopted by India (India preparing the National Action Plan on Human rights and Business by 2020)
	4 5 6	Core International Human Rights Treaties: - Covenant on Civil and Political Rights (ICCPR) - Covenant on Economic,			All core human rights treaties	Respect for human rights regardless of age, nationality, gender, race, ethnicity, religion, ability, marital status, sexual orientation and gender identity, political opinion or affiliation, etc.	Ratified(10July 1979)

Theme	Referenced in following P&C	International Standards			Key Provisions	Summary of Protection	India Signatory (s) or Ratified (R)
		Convention	Declaration	Guiding Principles/ UN Outcome Documents			
		Social and Cultural Rights (ICESCR) - Convention on the Elimination of All Forms of Racial Discrimination (CERD) Convention on the Elimination of All Forms of Discrimination against Women (CEDAW) - Convention against Torture and Other Cruel, Inhuman or Degrading Treatment or Punishment (CAT) - Convention on the Rights of the Child (CRC) - International Convention on Protection of the Rights of All Migrant Workers and Members of Their Families (ICMRW)					Ratified (3 Dec 1968)  Ratified(10July 1979)  Ratified (3 Dec 1968)



### Annex 3

## KEY INTERNATIONAL LAWS AND CONVENTIONS APPLICABLE TO THE PRODUCTION OF PALM OIL

Theme	Referenced in following P&C	International Standards			Key Provisions	Summary of Protection	India Signatory (s) or Ratified (R)
		Convention	Declaration	Guiding Principles/ UN Outcome Documents			
Just Land Acquisition	4	- Convention for the Protection of All Persons from Enforced Disappearance (CPED) - Convention on the Rights of Persons with Disabilities (CRPD)					Ratified (9 July 1993)  Not ratified
		ILO Convention 169 (1989) on Indigenous and Tribal Peoples			Art 13-19	Respect and safeguard rights to lands and natural resources traditionally occupied and used; respect for customs of inheritance; no forced removals; compensation for loss and injury.	Not ratified
	4		UN Declaration on the Rights of Indigenous Peoples (2007)		Art 25-26	Right to distinctive relationship with land; right to own, use, develop and control their lands, territories and other resources.	Ratified (2007)

Theme	Referenced in following P&C	International Standards			Key Provisions	Summary of Protection	India Signatory (s) or Ratified (R)
		Convention	Declaration	Guiding Principles/ UN Outcome Documents			
Public Participation of Affective Communities	4	UN Convention on Biological Diversity (1992)			Art 10(c)	Protect and encourage customary use of biological resources in accordance with traditional practices.	Ratified (18 Feb 1994)
	4.5 4.5			Rio Declaration on Environment and Development (1992) and Agenda 21	Principle 10	Environmental issues are best handled with the participation of all concerned citizens, at the relevant level. Principle 10 combines public participation with public access to information and access to remedial procedures. According to Agenda 21, one of the fundamental principles for the achievement of sustainable development is broad public participation in decision-making. Both Agenda 21 and the Rio Declaration emphasize the importance of the participation of all major groups, and special emphasis has been given, including in legally binding international instruments, to ensuring participation in decision-making of those groups that are considered to be politically disadvantaged, such as indigenous peoples and women.	Adopted  No Signature required as it is a legally non-binding statement not a treaty

### Annex 3

## KEY INTERNATIONAL LAWS AND CONVENTIONS APPLICABLE TO THE PRODUCTION OF PALM OIL

Theme	Referenced in following P&C	International Standards			Key Provisions	Summary of Protection	India Signatory (s) or Ratified (R)
		Convention	Declaration	Guiding Principles/ UN Outcome Documents			
Fair Representation and Participation of Indigenous and Tribal People	4.2 4.4 4.5. 4.6	ILO Convention 169 (1989) on Indigenous and Tribal Peoples			Art 6-9	Self-representation through institutions; consultations with objective of achieving agreement or consent; rights to decide their own priorities, retain their own customs and resolve their offences according to customary law (compatible with international laws).	Not ratified
	4.4-4.8		UN Declaration on the Rights of Indigenous Peoples (2007)		Art 3	Indigenous peoples have the right to self-determination and to freely pursue their economic, social and cultural development.	Ratified (2007)
	4.4 4.5 4.7	UN Declaration on the Rights of Indigenous Peoples (2007)			Art 10, 11(2), 19, 28(1), 29(2) and 32(2)	Right to free, prior and informed consent to any project affecting their lands as expressed through their own representative institutions.	Ratified (2007)

Theme	Referenced in following P&C	International Standards			Key Provisions	Summary of Protection	India Signatory (s) or Ratified (R)
		Convention	Declaration	Guiding Principles/ UN Outcome Documents			
No Forced Labour	4.4 4.5 4.7	Convention on the Eliminations of All Forms of Racial Discrimination, International Covenant on Economic, Social and Cultural Rights, Inter American Human Rights System.			UN CERD Committee, UN Committee on Social Culture and Economic Rights, Inter American Commission on Human Rights	Free Prior Informed Consent for decisions that may affect indigenous people. (This standard has been widely accepted as 'best practice' standard by bodies such as World Commission on Dams, Extractive Industries Review, Forest Stewardship Council, UNDP, CBD, IUCN, WWF).	Ratified (10 April 1979)
	2.2 6.6	ILO Convention 29 (1930) Forced Labour			Art 5	No concession to companies shall involve any form of forced or compulsory labour.	Ratified (30 Nov 1954) Not ratified
	6.6	ILO Convention 105 (1957) Abolition of Forced Labour.			Art 1	Not make use of any form of forced or compulsory labour.	Ratified (18 May 2000)
Protection of Children	6.4	ILO Convention 138 (1973) Minimum Age			Arts 1-9	Abolition of child labour and definition of national minimum age for labour not less than 15-18 years (depending on occupation).	Ratified (13th June 2017)

### Annex 3

## KEY INTERNATIONAL LAWS AND CONVENTIONS APPLICABLE TO THE PRODUCTION OF PALM OIL

Theme	Referenced in following P&C	International Standards			Key Provisions	Summary of Protection	India Signatory (s) or Ratified (R)
		Convention	Declaration	Guiding Principles/ UN Outcome Documents			
	6.4	ILO Convention 182 (1999) Worst Forms of Child Labour			Arts 1-7	Abolition of child slavery, debt bondage, trafficking and procurement for prostitution; suitable methods to monitor and enforce compliance.	Ratified (13th June 2017)
	6.4	Minimum Age (Agriculture) Convention 1921 (No.10)			Art 1-2	Applicable to children under the age of 14 outside the hours of attendance in school.	Not Ratified
	6.4 6.5		UN Declaration on the Rights of Indigenous Peoples (2007)		Art 17(2), 21, 22(2)	No exploitation or exposure to hazard or discrimination against indigenous women and children.	Ratified (2007)
Freedom of Association and Collective Bargaining	6.3	ILO Convention 87 (1948) Freedom of Association and Protection of Right to Organize			Art 2-11	Freedom to join organizations federations and confederations of their own choosing; with freely chosen constitutions and rules; measures to protect the right to organize.	Not ratified
	6.3	ILO Convention 98 (1949) Right to Organize and Collective Bargaining	gdfgdgdgddfgd dd	gdfgdgdgdd fgddd	Art 1-4	Protection against anti-union acts and measures to dominate unions; establish means for voluntary negotiation of terms and conditions of employment through collective agreements.	Not ratified

Theme	Referenced in following P&C	International Standards			Key Provisions	Summary of Protection	India Signatory (s) or Ratified (R)
		Convention	Declaration	Guiding Principles/ UN Outcome Documents			
	6.3	ILO Convention 141 (1975) Rural Workers' Organizations			Art 2-3	Right of tenants, sharecroppers and smallholders to organize; freedom from association; free from interference and coercion	Ratified (18 Aug 1977)
	6.3	International Covenant on Economic, Social and Cultural Rights (1966)			Art 8 (1)	The right of everyone to form trade unions and join the trade union of his choice, subject only to the rules of the organization concerned, for the promotion and protection of his economic and social interests. No restrictions may be placed on the exercise of this right other than those prescribed by law and which are necessary in a democratic society in the interests of national security or public order or for the protection of the rights and freedoms of others.	Ratified (10 April 1979)
	6.3	Collective Bargaining Convention, 1981 (No 154)			Art 1, 2, 3(2), 4, 5, 7, 8	Promotion of the right to collective bargaining.	Not ratified
Non-discrimination and Equal Remuneration	6.1	ILO Convention 100 (1951) Equal Remuneration			Art 1-3	Equal Remuneration for men and women for work of equal value.	Ratified (25 Sep 1958)

### Annex 3

## KEY INTERNATIONAL LAWS AND CONVENTIONS APPLICABLE TO THE PRODUCTION OF PALM OIL

Theme	Referenced in following P&C	International Standards			Key Provisions	Summary of Protection	India Signatory (s) or Ratified (R)
		Convention	Declaration	Guiding Principles/ UN Outcome Documents			
	6.1	ILO Convention 111 (1958) Discrimination (Employment and Occupation)			Art 1-2	Equality of opportunity and treatment in respect to employment and occupation; no discrimination on the basis of race, colour, sex, religion, political opinion, national extraction or social origin.	Ratified (3 June 1960)
	6.1		UN Declaration on the Rights of Indigenous Peoples (2007)		Articles 2, 8(e), 9, 15(2), 16(1), 21(2), 22, 24(1) 29(1), 46(3)	No discrimination based on origin or identity; free to express identity based on custom; special attention to and full protection of rights of indigenous women.	Ratified (2007)
	6.1	ILO Convention 156 (1981) Workers with Family Responsibility			Art 1-5, 7-10	No discrimination of any form against a worker, whether male or female with responsibilities in relation to their dependent children, where such responsibilities restrict their possibilities of preparing for, entering, participating in or advancing in economic activity.	Not Ratified
	2.2	ILO Convention on Private Employment Agencies 1997 (No. 181)			Art 1,2,4-12	Concerns the protection of workers which are employed with the intention of making the services of these workers available to third parties.	Not ratified

Theme	Referenced in following P&C	International Standards			Key Provisions	Summary of Protection	India Signatory (s) or Ratified (R)
		Convention	Declaration	Guiding Principles/ UN Outcome Documents			
	6.1	ILO Convention on Vocational Rehabilitation and Employment (Disabled Persons) 1983 (No. 159)			Art 1-4,		Not ratified
	6.1	International Covenant on Economic, Social and Cultural Rights (1966)			Art 7	Fair wages and equal remuneration for work of equal value without distinction of any kind, in particular women being guaranteed conditions of work not inferior to those enjoyed by men, with equal pay for equal work. Equal opportunity for everyone to be promoted in his employment to an appropriate higher level, subject to no considerations other than those of seniority and competence;	Ratified (10 April 1979)
Elimination of Harassment and Abuse in Workplace	6.5	Convention on the Elimination of All Forms of Discrimination against Women			General Recommendation 35	of the private sector, including businesses and transnational corporations, efforts to eradicate all forms of gender- based violence against women; developing protocols and procedures addressing all forms of gender-based violence that may occur in workplace or affect women workers, including effective and accessible internal complaints procedures.	Ratified (9 July 1993)



### Annex 3

## KEY INTERNATIONAL LAWS AND CONVENTIONS APPLICABLE TO THE PRODUCTION OF PALM OIL

Theme	Referenced in following P&C	International Standards			Key Provisions	Summary of Protection	India Signatory (s) or Ratified (R)
		Convention	Declaration	Guiding Principles/ UN Outcome Documents			
Just Employment for Migrants	2.2 6.6	ILO Convention 97 (1949) Migration for Employment				Provision of information; no obstacles to travel; provision of healthcare; non-discrimination in employment; accommodation, social security and remuneration; no forced repatriation of legal migrant workers; repatriation of savings.	Not ratified
	6.6	ILO Convention 143 (1975) Migrant Workers (Supplementary Provisions)			Art 1-12	Respect basic human rights; protection of illegal migrants from abusive employment; no trafficking in illegal migrants; fair treatment of migrant labour.	Not Ratified
	2.2 6.6	Convention on the Protection of the Rights of All Migrant Workers and Members of Their Families (1990)			Art 11; 21; 25; 26	Prevention of slavery; forced and compulsory labour; on confiscation of identify documents; conditions of work and contractual terms; and freedom of association and right to join trade unions.	Not ratified
Protection of Plantation Workers	6.1	ILO Convention 97 (1949) Migration for Employment	gdfgdgdgddfgd dd	gdfgdgdgdd fgddd	Art 5-91	Protection of members of families of recruited workers' rights during recruitment and transport; fair employment contracts; abolition of penal sanctions; fair wages and conditions of work; no coercion or obligation to use company stores; adequate accommodation and	Not ratified

Theme	Referenced in following P&C	International Standards			Key Provisions	Summary of Protection	India Signatory (s) or Ratified (R)
		Convention	Declaration	Guiding Principles/ UN Outcome Documents			
						conditions; maternity protection; compensation for injuries and accidents; freedom of association; right to organize and collective bargaining; proper labour inspection; decent housing and medical care.	
	6.2	ILO Convention No 11 Rights of Association (Agriculture) 1921			Art 1	All those who work in the agricultural sector to be accorded the same rights of association and combination as to industrial workers.	Ratified (11 May 1923)
	6	ILO Convention on Plantation (1958) (No. 110)			Art 1,2,5,7,8, 11,12-15	This convention relates to rights of workers and their families (including migrant workers) who have been recruited to work on plantations.	Not Ratified
	6.2	ILO Convention No 47 Forty Hour Week			Art 1	Requires that member adopt a 40 hour week in a manner that the standard of living is not reduced as a consequence.	Not Ratified
Protection of Women's Rights to Work	6.1	Convention on the Elimination of All Forms of Discrimination against Women (CEDAW) (1979)			Art 11	Right to free choice of profession and employment, the right to promotion, job security and all benefits and conditions of service and the right to receive vocational training and retraining, including apprenticeships, advanced vocational training and recurrent training; Right to equal remuneration, including benefits, and to equal treatment in respect	Ratified (9 July 1993)

### Annex 3

## KEY INTERNATIONAL LAWS AND CONVENTIONS APPLICABLE TO THE PRODUCTION OF PALM OIL

Theme	Referenced in following P&C	International Standards			Key Provisions	Summary of Protection	India Signatory (s) or Ratified (R)
		Convention	Declaration	Guiding Principles/ UN Outcome Documents			
						of work of equal value, as well as equality of treatment in the evaluation of the quality of work.	
	6.1	Maternity Protection Convention 2000 (No. 183)			Art 9	Prohibition from requiring a test for pregnancy or a certificate of such a test when a woman is applying for employment, except where required by national laws or regulations in respect of work.	Not Ratified
	6.5 6.7	Convention on the Elimination of All Forms of Discrimination against Women (CEDAW) (1979)			Art 11 (f)	The right to protection of health and to safety in working conditions, including the safeguarding of the function of reproduction.	Ratified (9 July 1993)
	6.5	Maternity Protection Convention 2000 (No. 183)			Art 10	A woman shall be provided with the right to one or more daily breaks or a daily reduction of hours of work to Breast feed her child. These breaks or the reduction of daily hours of work shall be counted as working time and remunerated accordingly.	Not ratified

Theme	Referenced in following P&C	International Standards			Key Provisions	Summary of Protection	India Signatory (s) or Ratified (R)
		Convention	Declaration	Guiding Principles/ UN Outcome Documents			
Protection of Tenants and Sharecroppers	4.2			ILO Recommendation 132 (1968) Tenants and Sharecroppers	Art 4-8	Fair rents; adequate payment for crops; provisions for well-being; organization fair contracts; procedures for the settlement of disputes.	Adopted
Health and Safety	3.6 6.7	ILO Conventions 184 (2001) Safety and Health in Agriculture			Art 7-21	Carry out risk assessments and adopt preventive and protective measures to ensure health and safety with respect to workplaces, machinery equipment, chemical tools and processors; ensure dissemination of information, appropriate training, supervision and compliance; special protection for youth and women workers; coverage against occupational health and disease.	Not ratified
	3.6 6.7	ILO Convention on Invalidity Insurance (Agriculture) 1933 (No.38)			Art 1-6, 13, 17, 20,23	Maintenance of a scheme for invalidity Insurance for workers.	Not ratified
	6.1 6.2	Convention on Maternity Protection 2000 (No. 183)			Art 2-4	Maternity Protection and benefits	Not ratified

### Annex 3

## KEY INTERNATIONAL LAWS AND CONVENTIONS APPLICABLE TO THE PRODUCTION OF PALM OIL

Theme	Referenced in following P&C	International Standards			Key Provisions	Summary of Protection	India Signatory (s) or Ratified (R)
		Convention	Declaration	Guiding Principles/ UN Outcome Documents			
Control or Eliminate the use of Dangerous Chemicals and Pesticides	7.2	Stockholm Convention on Persistent Organic Pollutants (2001)			Arts 1-5	Prohibit and/or eliminate production and use of chemicals listed in Annex A (eg Aldrin, Chlordane PCB); restrict production and use of chemicals in Annex B (eg DDT); reduce or eliminate releases of chemicals listed in Annex C (eg Hexachlorobenze).	Ratified (24 May 2005)
	7.2	Rotterdam Convention on Prior and Informed Consent Procedure for Certain Hazardous Chemicals and Pesticides in International Trade (1998)			Art 1, 5, and 6	Curb trade banned and hazardous chemicals and pesticides; develop national procedures for control of their use and trade; list banned and hazardous chemicals and pesticides.	Accession (24 May 2005)

Theme	Referenced in following P&C	International Standards			Key Provisions	Summary of Protection	India Signatory (s) or Ratified (R)
		Convention	Declaration	Guiding Principles/ UN Outcome Documents			
	7.2	Rotterdam Convention on Prior and Informed Consent Procedure for Certain Hazardous Chemicals and Pesticides in International Trade (1998)			Art 1, 5, and 6	Curb trade banned and hazardous chemicals and pesticides; develop national procedures for control of their use and trade; list banned and hazardous chemicals and pesticides.	Accession (24 May 2005)
			UN Declaration on the Rights of Indigenous Peoples (2007)		Art 21(1), 23, 24, 29(3)	Improvement of livelihood and sanitation, health and housing, participate in health delivery; maintain traditional health systems; effective monitoring of health.	Ratified (2007)
		ILO Convention No 148 on Working Environment (Air, Pollution, Noise and Vibration) 1977			Art 1-3	Provides for measures which shall be taken to	Not Ratified
		ILO Convention No 170 on Chemical Convention 1990			Art		Not Ratified

### Annex 3

## KEY INTERNATIONAL LAWS AND CONVENTIONS APPLICABLE TO THE PRODUCTION OF PALM OIL

Theme	Referenced in following P&C	International Standards			Key Provisions	Summary of Protection	India Signatory (s) or Ratified (R)
		Convention	Declaration	Guiding Principles/ UN Outcome Documents			
Right to Food	6.2	International Covenant on Economic, Social and Cultural Rights (1966)			Art 11	Right to adequate standard of living , including right to food.	Ratified (10 April 1979)
Environmental Protection	3.4	UN Convention on Biological Diversity (1992)			Art. 14	Environmental impact assessment of its proposed projects that are likely to have significant adverse effects on biological diversity with a view to avoiding or minimizing such effects and, where appropriate. Allow for public participation in such procedures.	Ratified (18 Feb 1994)
Conservation of Biodiversity		Conservation of Biodiversity			Art 1 – 18	Conservation of biological diversity and the sustainable use of its components.	Ratified (18 Feb 1994)
GHG Emissions	7.10				Art 1-4	Aimed at stabilizing atmospheric concentrations of greenhouse gases to avoid “dangerous anthropogenic interference, including in agricultural sector.	



## ANNEX 4: IMPLEMENTATION PROCEDURE FOR INDICATOR 2.3.2

Where the unit of certification has smallholder suppliers, for existing RSPO certified mills, the time requirement to fulfil this Criterion for all their smallholder suppliers is three years from [15 November 2018]. For mills that are not yet certified/ mills going for first year of certification, the time requirement is three years from initial point of certification for their smallholder suppliers.



## ANNEX 5: TRANSITION FROM HCV TO HCV–HCS ASSESSMENT

Criterion 7.12 requires that new land clearing after 15 November 2018 (i.e. adoption of the P&C at GA15) must be preceded by an HCV-HCS assessment. The Task Force recognizes that there is an array of scenarios, in which HCV assessments have previously been undertaken and have been approved or are in the process of approval. This Annex shows how the new requirements apply in different scenarios of existing and new certifications, with and without new land clearing.

### NO NEW LAND CLEARING SCENARIOS:

- Existing certified plantations, with valid HCV assessment approved before 15 November 2018
  - o Going for recertification → HCV assessment is acceptable
  - o Replanting → HCV assessment is acceptable
- Existing plantations, not yet certified at 15 November 2018, going for initial certification
  - o Without existing ALS Approved HCV Assessment → New combined HCV-HCS required
  - o With valid ALS approved HCV assessment → ALS Approved Assessment acceptable
    - Where certification is pending, as of 15 November 2018, because it has been held up by RACP or HGU processes, previous approved HCV assessment (RSPO and ALS approved), if they are not older than January 2009<sup>1</sup>, will be accepted.
  - o HCV assessment submitted to ALS but pending approval before 15 November 2018
    - If passes ALS process, then the approved HCV assessment is acceptable;
    - If fails ALS process, new combined HCV-HCS assessment required
  - o Replanting → ALS approved HCV is acceptable

<sup>1</sup> The date for first published list of RSPO-approved HCV

## ANNEX 5: TRANSITION FROM HCV TO HCV-HCS ASSESSMENT

### NEW LAND CLEARING SCENARIOS:

In new plantations and in existing uncertified units, land clearing after 15 November 2018

- o Without existing HCV assessment
  - New combined HCV-HCS required
- o HCV assessment conducted, but not yet submitted to ALS before 15 November 2018
  - New combined HCV-HCS required
- o HCV Assessment submitted to ALS but pending approval before 15 November 2018
  - If passes ALS process, then the approved HCV assessment is acceptable;
  - If fails ALS process, new combined HCV-HCS assessment required
- o NPP initiated by 15 November 2018 and HCV assessment conducted and passes ALS before 15 November 2018
  - ALS Approved HCV assessment is acceptable

In existing certified plantations (certified before 15 November 2018), with land clearing after 15 November 2018 → New combined HCV-HCS required

- o If area to be cleared is exclusively pasture, infrastructure, agriculture or monocrop tree plantations which have not been abandoned for more than three years
  - Valid HCV assessment + LUCA to demonstrate that no clearing of native vegetation occurred without prior HCV assessment is acceptable.

## ANNEX 6: Related laws, regulations & guidelines used in Indian palm oil industry in relation to respective Principles and Criteria

Criteria	Related Laws, Regulations & Guidelines
1.1	<ul style="list-style-type: none"> <li>· Right to Information Act, 2005</li> <li>· Andhra Pradesh Oil Palm Act,1993</li> <li>· Telangana State Oil Palm Act,2014</li> <li>· Mizoram Palm Oil Act (2004)</li> <li>· Karnataka Oil Palm Act, 2013</li> <li>· Prevention of Corruption Act, 1988 (No. 49 of 1988)</li> </ul>
1.2	<ul style="list-style-type: none"> <li>· Andhra Pradesh Oil Palm Act,1993</li> <li>· Telangana State Oil Palm Act,2014</li> <li>· Mizoram Palm Oil Act (2004)</li> <li>· Karnataka Oil Palm Act, 2013</li> <li>· Prevention of Corruption Act, 1988 (No. 49 of 1988)</li> <li>· Essential commodities act 1955</li> </ul>
2.1, 2.2, 2.3	<ul style="list-style-type: none"> <li>· Andhra Pradesh Oil Palm Act,1993</li> <li>· Telangana State Oil Palm Act,2014</li> <li>· Mizoram Palm Oil Act (2004)</li> <li>· Karnataka Oil Palm Act, 2013</li> <li>· The land acquisition act, 1894 - PRS</li> <li>· Andhra Pradesh Land Reforms (Ceiling On Agricultural Holdings) Act, 1973</li> <li>· Karnataka Land Revenue Act, 1964</li> <li>· The Nagaland Jhumland Act, 1970 Complete Act - Bare Act</li> <li>· Indian forest act 1927</li> <li>· The Environment(Protection) Act, 1986</li> <li>· The Forest Conservation Act, 1980</li> <li>· Constitution of India (Article 19 &amp; 31)</li> </ul>

Criteria	Related Laws, Regulations & Guidelines
4.1, 4.2, 4.3, 4.4, 4.5, 4.6, 4.7, 4.8	<ul style="list-style-type: none"> <li>· Andhra Pradesh Oil Palm Act,1993</li> <li>· Telangana State Oil Palm Act,2014</li> <li>· Mizoram Palm Oil Act (2004)</li> <li>· Karnataka Oil Palm Act, 2013</li> <li>· Basic Human Rights by Constitution of India</li> <li>· The Protection of Civil Rights, 1955</li> <li>· Essential commodities act 1955 (regarding Punishment to Miller)</li> </ul>
5.1, 5.2	<ul style="list-style-type: none"> <li>· Andhra Pradesh Oil Palm Act,1993</li> <li>· Telangana State Oil Palm Act,2014</li> <li>· Mizoram Palm Oil Act (2004)</li> <li>· Karnataka Oil Palm Act, 2013</li> <li>· Essential commodities act 1955 (regarding Punishment to Miller)</li> </ul>
6.1, 6.2, 6.3, 6.4, 6.5, 6.6, 6.7	<ul style="list-style-type: none"> <li>· Andhra Pradesh Oil Palm Act,1993</li> <li>· Telangana State Oil Palm Act,2014</li> <li>· Mizoram Palm Oil Act (2004)</li> <li>· Karnataka Oil Palm Act, 2013</li> <li>· Prevention of Corruption Act, 1988 (No. 49 of 1988)</li> <li>· Minimum wages act 1948</li> <li>· Child Labour (Prohibition and Regulation) Act, 1986.</li> <li>· Payment of Bonus Act 1947</li> <li>· The Protection of Civil Rights, 1955,</li> <li>· Equal Remuneration Act, 1976</li> <li>· The Inter-State Migrant Workmen (Regulation of Employment and Conditions of Service) Act, 1979</li> <li>· The Trade Union Act of 1926</li> <li>· The Equal Remuneration Act of 1976</li> <li>· The Bonded Labour System (Abolition) Act of 1976</li> <li>· Societies Registration Act, 1860</li> <li>· Kerala Agricultural Workers Act, 1974</li> </ul>

Criteria	Related Laws, Regulations & Guidelines
----------	--

7.1, 7.2, 7.3,  
7.4, 7.5, 7.6,  
7.7, 7.8, 7.9,  
7.10, 7.11

- The Nagaland Jhumland Act, 1970 Complete Act - Bare Act
- Indian forest act 1927
- The Environment(Protection) Act, 1986
- The Forest Conservation) Act, 1980
- Water (Prevention and Control of Pollution) Act, 1974
- The Wildlife Protection Act, 1972;
- Air (Prevention and Control of Pollution) Act, 1981
- Indian Easement Act of 1882.(for ground water)
- Indian constitution – article 21, 48 A, 51 A(g) –water law
- Protection of Plant Varieties and Farmers' Rights Act, 2001 (PPVFR).
- Engineering Approval Committee. Under the EPA 1986 “Rules for Manufacture, Use, Import, Export and Storage of Hazardous Microorganisms/Genetically Engineered Organisms or Cells 1989”, GEAC is responsible for granting permits to conduct experimental and large-scale open field trials and also grant approval for commercial release of biotech crops.
- The Insecticides Act, 1968 and Insecticides Rules, 1971
- Central Insecticides Board and Registration Committee (CIBRC)
- Food Safety and Standards Authority of India (FSSAI)

The RSPO is an international non-profit organisation formed in 2004 with the objective to promote the growth and use of sustainable oil palm products through credible global standards and engagement of stakeholders.

[www.rspo.org](http://www.rspo.org)



**Roundtable on Sustainable Palm Oil**

Unit A-37-1, Level 37, Tower A Menara  
UOA Bangsar  
No.5 Jalan Bangsar Utama 1 59000  
Kuala Lumpur  
T +603 2302 1500  
F +603 2302 1543

**Other Offices:**

Jakarta, Indonesia London,  
United Kingdom Beijing,  
China  
Bogota, Colombia New  
York, USA  
Zoetermeer, Netherlands

 [rspo@rspo.org](mailto:rspo@rspo.org)

 [www.rspo.org](http://www.rspo.org)