



Bureau Veritas Certification (M) Sdn Bhd

Lot 19.01 & 19.02, 19th Floor,
Menara KH, Jalan Sultan Ismail
50250 Kuala Lumpur,
Malaysia

Date of Notification: **1st June 2022**

Dear Interested Parties,

Public Notification: RSPO RISS Re-Certification (Milestone B) of Univanich-Plaipraya Community Enterprise Group (RSPO Membership: 1-0119-12-000-00)

Bureau Veritas Certification (M) Sdn Bhd. has been appointed by Univanich-Plaipraya Community Enterprise Group, with RSPO membership number 1-0119-12-000-00 to perform an RSPO RISS Re-Certification (Milestone B) audit at Univanich-Plaipraya Community Enterprise Group, located at 592 Moo 9 Plaipraya Sub-District, Plaipraya District, Krabi Province, Thailand. The audit will be conducted from 18 - 22 July 2022 against the requirements of:

- RSPO Independent Smallholder Standard 2019, using Supply Chain Model Identity Preserved (IP)

RSPO PO ID number of the Group is: RSPO_PO1000005184

Independent Smallholder background

They are a group of oil palm farmer located at 592 Moo 9 Plaipraya Sub-District, Plaipraya District, Krabi Province Thailand. They are interested to produce sustainable palm oil under the RSPO standard.

Information of the production data to be assessed on the Group Manager and ISH members are as follows:

1. Group Manager information

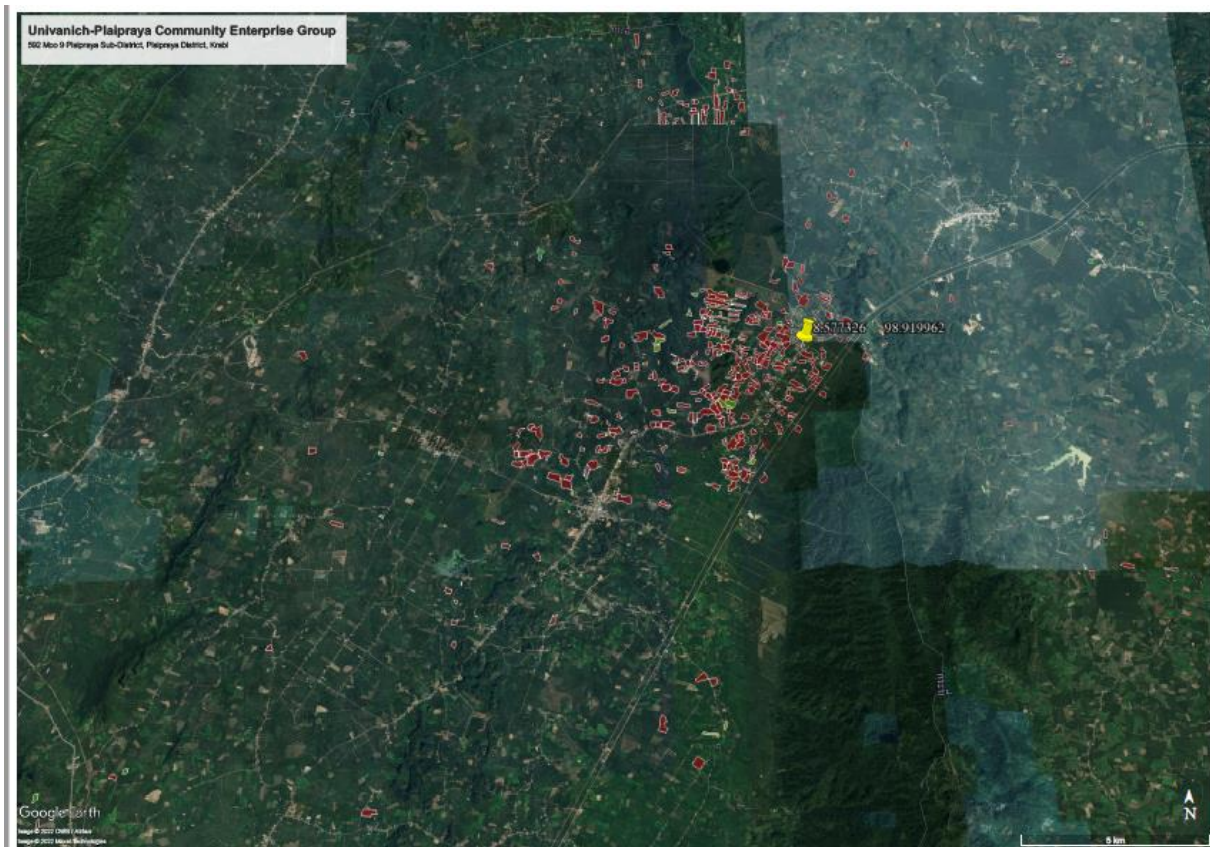
Name of Group Manager	Location	GPS Reference		No. of Smallholders	Area summary		Projected FFB Production (MT/year)
		Latitude	Longitude		Total Titles (Ha)	*Planted Area (Ha)	
Univanich-Plaipraya Community Enterprise Group	592 Moo 9 Plaipraya Sub-District, Plaipraya District, Krabi	99.9195 E	8.5780278 N	240	1,674.36	1248.27	21,836.94

2. Independent Smallholders information (to refer Annex 1)

Number of farmers / members	Location	GPS Reference		Area Summary (Ha)	Forecasted annual FFB production (MT)	Any Liabilities?
		Latitude	Longitude	Certified / Planted Area		
240	Refer to Annex 1	Refer to Annex 1	Refer to Annex 1	1,674.36 / 1,248.27	21,836.94	The total raw non-compliant land clearing (NCLC) is 13.44 ha and the Final Conservation Liability (FCL) calculated 0.32 ha. Related to remediation area, there is no potential remediation area was found within Univanich-Plaipraya Community Enterprise Group. So, the total area that needs remediation is about 0.00 ha.

* Based on Smallholder Land Use Change Analysis for Univanich-Plaipraya Community Enterprise Group prepared on 22 July 2021

3. Location Map of the ISH Group





To indicate whether any of the estates in the management unit is undergoing the RaCP (Remediation and Compensation Procedure) process. If yes, to indicate the status. This information can be gained via the RaCP Tracker (<https://www.rspo.org/certification/remediation-and-compensation/racp-tracker>). Any enquiries in regards to liability shall be made directly to RSPO.

Assessment Team

Bureau Veritas Certification (M) Sdn Bhd is member of the Bureau Veritas, a global leader in Testing, Inspection and Certification (TIC), delivering high quality services to help clients meet the growing challenges of quality, safety, environmental protection and social responsibility. Established in 1828, Bureau Veritas has over 190 years of experience in providing various types of certifications and recognized and accredited by major national and international organizations.

The assessors assigned for this Re-Certification assessment will involve a team of auditors as follows:

- **Mrs. Chongrak Takard:** She will be in charge as lead auditor and responsible for auditing against RSPO standard RSPO P&C, HCV, regulatory, good agricultural practice, Integrated Pest Management, pesticide and fertilizer use, ecological and environmental as well as social aspect in plantation.
- **Mr Supiwat Nentakong (Environmental, health & safety):** He will be involved with auditing of good agricultural practice, Integrated Pest Management, pesticide and fertilizer use, environmental management, regulatory, health and safety, and worker welfare and social issues in mill and plantation.
- **Mr. Niyom Sanmano (Legal/Laws):** He will be involved with auditing of good agricultural practice, Integrated Pest Management, pesticide and fertilizer use, environmental management, regulatory, health and safety, and worker welfare and social issues in mill and plantation.
- **Mr. Wilif Muensroy (Social):** He will be involved with auditing of good agricultural practice, Integrated Pest Management, pesticide and fertilizer use, environmental management, regulatory, health and safety, and worker welfare and social issues in mill and plantation.

Invitation of all stakeholders:

Interested stakeholders are invited to provide comments or inputs regarding the following issues related to performance of the company and compliance of the company's with RSPO certification requirements.

- Ecological and environmental conservation
- Land acquisition process and/or land disputes
- Opportunity for employment, wage, overtime and piece wage
- Provision of housing, sanitation, amenities and educational support
- Community approach and community development
- Other issues pertaining to RSPO

Your comments or observations can be communicated through either a meeting with assessment team during the field audit or writing/email to BVC (see contact details below). Contact details for BVC and the auditee's representatives are as follow:

**Bureau Veritas Certification**

Mrs. Chongrak Takard
Bureau Veritas Certification (Thailand)
Limited
16th Floor, Bangkok Tower, 2170 New
Petchburi Road, Bangkok, Huaykwang,
Bangkok, 10310 Thailand
Tel: +66 2670 4800
Fax: +66 2 718 1941
Email: chongrak.takard@bureauveritas.com

**Univanich-Plaipraya Community Enterprise
Group Representative**

Mr. Kuakun Seangtan
Univanich-Plaipraya Community Enterprise
Group 592 Moo 9 Plaipraya Sub-District,
Plaipraya District,
Krabi Province, Thailand
Tel: +66 87 036 0389
Email : Univanich.plaipraya@gmail.com

BVC appreciates comments received within 30 days from the date of this notification letter. Comments and inputs will be considered during the assessment. All received information will be kept confidential and only serves for BVC and RSPO. We thank you for your comments and feedbacks.

Yours sincerely,

Mr. Muhamad Iqbal bin Jailan
Technical Lead – RSPO P&C



Annex 1: List of Independent Smallholder for Univanich-Plaipraya Community Enterprise Group

No.	Member's ID	Smallholder's Name	Plot No.	Location			GPS Coordinate		Total Land Title Area (Ha)	Oil Palm Planted Area (Ha)	Date Joining
				Sub-District	District	Province	Latitude	Longitude			
1	59-01-01	Kwad Somprasong	A	T.Plaipraya	A.Plaipraya	Krabi	8.343347	98.553402	5.09	3.1744	08-01-12
2	59-01-02	Kanjana Namsen	A	T.Plaipraya	A.Plaipraya	Krabi	8.670564	99.003603	1.76	1.7600	08-01-12
	59-01-02	Kanjana Namsen	B	T.Plaipraya	A.Plaipraya	Krabi	8.587368	98.928867	3.45	1.2800	08-01-12
3	59-01-03	Kanthima Thikhaphiphat	A	T.Plaipraya	A.Plaipraya	Krabi	8.593035	98.920153	2.44	2.4400	08-01-12
4	59-01-04	Kraisorn Namsen	A	T.Plaipraya	A.Plaipraya	Krabi	8.670733	99.005164	1.76	1.7600	08-01-12
5	59-01-05	Jaroon Namsen	A	T.Plaipraya	A.Plaipraya	Krabi	8.587654	98.929159	0.64	0.6400	08-01-12
	59-01-05	Jaroon Namsen	B	T.Plaipraya	A.Plaipraya	Krabi	8.672968	99.002396	2.22	1.2832	08-01-12
6	59-01-06	Taweep Chamnan	A	T.plaipraya	A.Plaipraya	Krabi	8.592133	98.921419	8.84	8.4800	08-01-12
7	59-01-07	Thanongsak Kaocha-oum	A	T.plaipraya	A.Plaipraya	Krabi	8.584137	98.896853	3.42	3.2640	08-01-12
	59-01-07	Thanongsak Kaocha-oum	B	T.plaipraya	A.Plaipraya	Krabi	8.669203	98.903091	5.25	5.2464	08-01-12
	59-01-07	Thanongsak Kaocha-oum	C	T.plaipraya	A.Plaipraya	Krabi	8.663847	98.904653	1.71	1.7136	08-01-12
	59-01-07	Thanongsak Kaocha-oum	D	T.plaipraya	A.Plaipraya	Krabi	8.585718	98.897032	2.00	2.0048	08-01-12



**BUREAU
VERITAS**

No.	Member's ID	Smallholder's Name	Plot No.	Location			GPS Coordinate		Total Land Title Area (Ha)	Oil Palm Planted Area (Ha)	Date Joining
				Sub-District	District	Province	Latitude	Longitude			
8	59-01-08	Prajuab Kerdsomkan	A	T.plaipraya	A.Plaipraya	Krabi	8.591327	98.927761	1.86	1.8560	08-01-12
9	59-01-09	Prayoon Phatsong	A	T.plaipraya	A.Plaipraya	Krabi	8.651163	98.895761	5.66	5.6560	08-01-12
	59-01-09	Prayoon Phatsong	B	T.plaipraya	A.Plaipraya	Krabi	8.58792	98.912202	2.99	2.9936	08-01-12
	59-01-09	Prayoon Phatsong	C	T.plaipraya	A.Plaipraya	Krabi	8.61627	98.923573	2.56	2.5600	08-01-12
10	59-01-10	Prasith Buachum	A	T.plaipraya	A.Plaipraya	Krabi	8.578117	98.937212	1.02	1.0208	08-01-12
11	59-01-11	Prasert Somprasong	A	T.plaipraya	A.Plaipraya	Krabi	8.580459	98.930825	2.97	2.6512	08-01-12
12	59-01-13	Lamyai Sirisombat	A	T.plaipraya	A.Plaipraya	Krabi	8.557296	98.916078	2.40	2.4000	08-01-12
	59-01-13	Lamyai Sirisombat	B	T.plaipraya	A.Plaipraya	Krabi	8.580449	98.925995	0.79	0.4672	08-01-12
	59-01-13	Lamyai Sirisombat	C	T.plaipraya	A.Plaipraya	Krabi	8.592894	98.927997	2.16	2.1552	08-01-12
13	59-01-14	Kittisak Suankaew	A	T.plaipraya	A.Plaipraya	Krabi	8.586455	98.916562	3.67	3.6704	08-01-12
14	59-01-15	Wanlee Suwanjinda	A	T.plaipraya	A.Plaipraya	Krabi	8.554307	98.913469	3.52	3.5200	08-01-12
	59-01-15	Wanlee Suwanjinda	B	T.plaipraya	A.Plaipraya	Krabi	8.58324	98.924749	2.29	2.2912	08-01-12
	59-01-15	Wanlee Suwanjinda	C	T.plaipraya	A.Plaipraya	Krabi	8.582288	98.919571	1.12	1.0512	08-01-12



**BUREAU
VERITAS**

No.	Member's ID	Smallholder's Name	Plot No.	Location			GPS Coordinate		Total Land Title Area (Ha)	Oil Palm Planted Area (Ha)	Date Joining
				Sub-District	District	Province	Latitude	Longitude			
15	59-01-18	Wipat Siengtan	A	T.plaipraya	A.Plaipraya	Krabi	8.571762	98.923146	3.26	3.2576	08-01-12
	59-01-18	Wipat Siengtan	B	T.plaipraya	A.Plaipraya	Krabi	8.578896	98.910191	3.72	3.7184	08-01-12
	59-01-18	Wipat Siengtan	C	T.plaipraya	A.Plaipraya	Krabi	8.578201	98.910409	1.72	1.7168	08-01-12
	59-01-18	Wipat Siengtan	D	T.plaipraya	A.Plaipraya	Krabi	8.579416	98.913919	6.28	6.2800	08-01-12
	59-01-18	Wipat Siengtan	E	T.plaipraya	A.Plaipraya	Krabi	8.5794	98.91377	1.63	1.4720	08-01-12
16	59-01-20	Somjit Janjamsai	A	T.plaipraya	A.Plaipraya	Krabi	8.577588	98.925773	0.91	0.9120	08-01-12
	59-01-20	Somjit Janjamsai	B	T.plaipraya	A.Plaipraya	Krabi	8.579303	98.936091	0.96	0.9648	08-01-12
	59-01-20	Somjit Janjamsai	C	T.plaipraya	A.Plaipraya	Krabi	8.58039	98.933254	0.83	0.8320	08-01-12
17	59-01-22	Somchok Phengchan	A	T.plaipraya	A.Plaipraya	Krabi	8.598063	98.913215	2.56	2.5600	08-01-12
18	59-01-23	Sakorn Phatkaew	A	T.plaipraya	A.Plaipraya	Krabi	8.571533	98.91741	1.20	1.2016	08-01-12
19	59-01-24	Suchat Dumplab	A	T.plaipraya	A.Plaipraya	Krabi	8.568283	98.924357	2.80	2.6400	08-01-12
	59-01-24	Suchat Dumplab	B	T.plaipraya	A.Plaipraya	Krabi	8.560338	98.914248	2.40	2.4000	08-01-12
20	59-01-25	Sunan Neimnuan	A	T.plaipraya	A.Plaipraya	Krabi	8.587925	98.927984	3.20	3.2000	08-01-12



**BUREAU
VERITAS**

No.	Member's ID	Smallholder's Name	Plot No.	Location			GPS Coordinate		Total Land Title Area (Ha)	Oil Palm Planted Area (Ha)	Date Joining
				Sub-District	District	Province	Latitude	Longitude			
21	59-01-26	Sumeechai Kreangkamol	A	T.plaipraya	A.Plaipraya	Krabi	8.522169	98.8413	2.73	2.7344	08-01-12
	59-01-26	Sumeechai Kreangkamol	B	T.plaipraya	A.Plaipraya	Krabi	8.557885	98.897625	2.40	2.4000	08-01-12
	59-01-26	Sumeechai Kreangkamol	C	T.plaipraya	A.Plaipraya	Krabi	8.543415	98.903915	0.64	0.6400	08-01-12
	59-01-26	Sumeechai Kreangkamol	D	T.plaipraya	A.Plaipraya	Krabi	8.570135	98.922399	1.59	1.5872	08-01-12
	59-01-26	Sumeechai Kreangkamol	E	T.plaipraya	A.Plaipraya	Krabi	8.585706	98.906813	2.16	2.1568	08-01-12
	59-01-26	Sumeechai Kreangkamol	F	T.plaipraya	A.Plaipraya	Krabi	8.575924	98.902633	1.68	1.6784	08-01-12
	59-01-26	Sumeechai Kreangkamol	G	T.plaipraya	A.Plaipraya	Krabi	8.571074	98.920762	0.64	0.6400	08-01-12
22	59-01-27	Surapol Chanthong	A	T.plaipraya	A.Plaipraya	Krabi	8.651173	98.899299	4.52	3.8816	08-01-12
	59-01-27	Surapol Chanthong	B	T.plaipraya	A.Plaipraya	Krabi	8.660488	98.903444	2.71	2.7072	08-01-12
	59-01-27	Surapol Chanthong	C	T.plaipraya	A.Plaipraya	Krabi	8.658711	98.905039	4.85	4.3680	08-01-12
	59-01-27	Surapol Chanthong	D	T.plaipraya	A.Plaipraya	Krabi	8.654632	98.906667	6.24	6.2400	08-01-12
	59-01-27	Surapol Chanthong	E	T.plaipraya	A.Plaipraya	Krabi	8.563246	98.896974	2.39	2.3920	08-01-12
23	59-01-28	Seang Ramkaew	A	T.plaipraya	A.Plaipraya	Krabi	8.586933	98.930783	0.89	0.8080	08-01-12



**BUREAU
VERITAS**

No.	Member's ID	Smallholder's Name	Plot No.	Location			GPS Coordinate		Total Land Title Area (Ha)	Oil Palm Planted Area (Ha)	Date Joining
				Sub-District	District	Province	Latitude	Longitude			
24	59-01-29	Ampa Rakwong	A	T.plaipraya	A.Plaipraya	Krabi	8.65048	98.88384	4.48	4.4848	08-01-12
25	59-01-30	Arom Karithip	A	T.plaipraya	A.Plaipraya	Krabi	8.697888	98.905863	3.68	3.6800	08-01-12
	59-01-30	Arom Karithip	B	T.plaipraya	A.Plaipraya	Krabi	8.585306	98.925091	2.28	2.2800	08-01-12
26	59-01-31	Arwut Boonraksa	A	T.plaipraya	A.Plaipraya	Krabi	8.602957	98.916602	5.44	5.4400	08-01-12
27	59-01-33	Urai Chudecha	A	T.plaipraya	A.Plaipraya	Krabi	8.565684	98.898526	4.71	4.7120	08-01-12
	59-01-33	Urai Chudecha	B	T.plaipraya	A.Plaipraya	Krabi	8.564728	98.899883	2.56	2.5648	08-01-12
28	59-01-34	Puengrat Janthong	A	T.plaipraya	A.Plaipraya	Krabi	8.596409	98.919265	4.49	4.4928	08-01-12
29	59-01-35	Orapin Chamnan	A	T.plaipraya	A.Plaipraya	Krabi	8.598339	98.920911	3.39	3.3872	08-01-12
30	59-02-01	Krajai Chaimee	A	T.plaipraya	A.Plaipraya	Krabi	8.582399	98.928413	3.00	3.0048	08-01-12
31	59-02-02	Kanlaya Saengsai	A	T.plaipraya	A.Plaipraya	Krabi	8.57205	98.913868	2.14	1.9040	08-01-12
	59-02-02	Kanlaya Saengsai	B	T.plaipraya	A.Plaipraya	Krabi	8.573043	98.914115	5.94	5.7008	08-01-12
32	59-02-03	Jaruek Choompen	A	T.plaipraya	A.Plaipraya	Krabi	8.543725	98.881141	2.19	2.1856	08-01-12
33	59-02-04	Jaruek Kriengkamol	A	T.plaipraya	A.Plaipraya	Krabi	8.569005	98.912265	1.44	1.0240	08-01-12



**BUREAU
VERITAS**

No.	Member's ID	Smallholder's Name	Plot No.	Location			GPS Coordinate		Total Land Title Area (Ha)	Oil Palm Planted Area (Ha)	Date Joining
				Sub-District	District	Province	Latitude	Longitude			
	59-02-04	Jaruek Kriengkamol	B	T.plaipraya	A.Plaipraya	Krabi	8.567404	98.911564	1.44	1.0720	08-01-12
34	59-02-05	Jamreang Patanabud	A	T.plaipraya	A.Plaipraya	Krabi	8.565869	98.916872	1.19	1.1872	08-01-12
35	59-02-06	Jued Oun-ok	A	T.plaipraya	A.Plaipraya	Krabi	8.578745	98.916059	3.22	3.0608	08-01-12
36	59-02-07	Jareun Pengchan	A	T.plaipraya	A.Plaipraya	Krabi	8.575918	98.921559	6.65	3.8416	08-01-12
37	59-02-08	Cha-On Choonak	A	T.plaipraya	A.Plaipraya	Krabi	8.65502	98.890423	6.35	6.3488	08-01-12
38	59-02-09	Choke Buasook	A	T.plaipraya	A.Plaipraya	Krabi	8.608451	98.884801	2.84	2.8400	08-01-12
	59-02-09	Choke Buasook	B	T.plaipraya	A.Plaipraya	Krabi	8.653496	98.896117	2.34	2.3408	08-01-12
39	59-02-10	Somsai Sangchan	A	T.plaipraya	A.Plaipraya	Krabi	8.672403	99.002329	1.28	1.2800	08-01-12
40	59-02-11	Thaworn Srithep	A	T.plaipraya	A.Plaipraya	Krabi	8.587431	98.91005	2.28	2.2816	08-01-12
	59-02-11	Thaworn Srithep	B	T.plaipraya	A.Plaipraya	Krabi	8.594108	98.92748	1.28	1.2800	08-01-12
	59-02-11	Thaworn Srithep	C	T.plaipraya	A.Plaipraya	Krabi	8.655801	98.902251	4.59	4.5904	08-01-12
	59-02-11	Thaworn Srithep	D	T.plaipraya	A.Plaipraya	Krabi	8.656471	98.900316	1.57	1.5712	08-01-12
	59-02-11	Thaworn Srithep	E	T.plaipraya	A.Plaipraya	Krabi	8.587292	98.91126	0.73	0.7312	08-01-12



**BUREAU
VERITAS**

No.	Member's ID	Smallholder's Name	Plot No.	Location			GPS Coordinate		Total Land Title Area (Ha)	Oil Palm Planted Area (Ha)	Date Joining
				Sub-District	District	Province	Latitude	Longitude			
	59-02-11	Thaworn Srithep	F	T.plaipraya	A.Plaipraya	Krabi	8.282386	99.226741	8.80	8.8000	08-01-12
41	59-02-12	Tawee Aurairot	A	T.plaipraya	A.Plaipraya	Krabi	8.588812	98.915546	0.96	0.9600	08-01-12
	59-02-12	Tawee Aurairot	B	T.plaipraya	A.Plaipraya	Krabi	8.592982	98.962565	1.98	1.9760	08-01-12
42	59-02-13	Nitaya Pengchan	A	T.plaipraya	A.Plaipraya	Krabi	8.61769	98.934769	3.65	1.7296	08-01-12
43	59-02-14	Bunaek Bunuaong	A	T.plaipraya	A.Plaipraya	Krabi	8.564532	98.891176	1.25	1.2528	08-01-12
44	59-02-15	Prajuab Chanmai	A	T.plaipraya	A.Plaipraya	Krabi	8.605035	98.885364	1.99	1.9856	08-01-12
45	59-02-16	Phloenchit Chaopa	A	T.plaipraya	A.Plaipraya	Krabi	8.565704	98.919373	2.41	2.4112	08-01-12
46	59-02-18	Lab Ruangrak	A	T.plaipraya	A.Plaipraya	Krabi	8.646143	98.907866	4.78	4.7840	08-01-12
47	59-02-19	Weerachai Kerdsook	A	T.plaipraya	A.Plaipraya	Krabi	8.578481	98.942862	1.89	1.8928	08-01-12
48	59-02-20	Siri Aun-ok	A	T.plaipraya	A.Plaipraya	Krabi	8.573766	98.916067	2.91	1.7920	08-01-12
49	59-02-21	Somchai Juseng	A	T.plaipraya	A.Plaipraya	Krabi	8.664753	98.898634	5.56	5.5584	08-01-12
	59-02-21	Somchai Juseng	B	T.plaipraya	A.Plaipraya	Krabi	8.575187	98.784222	4.80	4.8000	08-01-12
50	59-02-22	Somneuk Chooprod	A	T.plaipraya	A.Plaipraya	Krabi	8.58287	98.92288	1.38	1.3824	08-01-12



**BUREAU
VERITAS**

No.	Member's ID	Smallholder's Name	Plot No.	Location			GPS Coordinate		Total Land Title Area (Ha)	Oil Palm Planted Area (Ha)	Date Joining
				Sub-District	District	Province	Latitude	Longitude			
	59-02-22	Somneuk Chooprod	B	T.plaipraya	A.Plaipraya	Krabi	8.582293	98.923989	2.05	2.0496	08-01-12
51	59-02-23	Sommaï Boumporm	A	T.plaipraya	A.Plaipraya	Krabi	8.516426	99.013235	3.15	3.1472	08-01-12
	59-02-23	Sommaï Boumporm	B	T.plaipraya	A.Plaipraya	Krabi	8.525744	98.997036	2.47	2.4656	08-01-12
	59-02-23	Sommaï Boumporm	C	T.plaipraya	A.Plaipraya	Krabi	8.51522	98.992002	2.46	2.2992	08-01-12
	59-02-23	Sommaï Boumporm	D	T.plaipraya	A.Plaipraya	Krabi	8.517407	99.001796	3.82	3.8224	08-01-12
52	59-02-24	Sanjid chaisuwan	A	T.plaipraya	A.Plaipraya	Krabi	8.573868	98.887861	2.13	2.1328	08-01-12
	59-02-24	Sanjid chaisuwan	B	T.plaipraya	A.Plaipraya	Krabi	8.632771	98.937441	4.00	4.0000	08-01-12
	59-02-24	<i>Sanjid chaisuwan</i>	C	<i>T.plaipraya</i>	<i>A.Plaipraya</i>	<i>Krabi</i>	<i>8.584947</i>	<i>98.914725</i>	1.40	1.3952	08-01-12
	59-02-24	<i>Sanjid chaisuwan</i>	D	<i>T.plaipraya</i>	<i>A.Plaipraya</i>	<i>Krabi</i>	<i>8.57481</i>	<i>98.913979</i>	1.86	1.8592	08-01-12
53	59-02-25	Sakhon Basri	A	T.plaipraya	A.Plaipraya	Krabi	8.580677	98.915758	6.97	4.8000	08-01-12
54	59-02-26	Sukon Kaewkarn	A	T.plaipraya	A.Plaipraya	Krabi	8.583335	98.918239	1.09	1.0912	08-01-12
	59-02-26	Sukon Kaewkarn	B	T.plaipraya	A.Plaipraya	Krabi	8.574111	98.939916	1.96	0.9600	08-01-12
	59-02-26	Sukon Kaewkarn	D	T.plaipraya	A.Plaipraya	Krabi	8.576909	98.907723	1.12	1.1200	08-01-12



**BUREAU
VERITAS**

No.	Member's ID	Smallholder's Name	Plot No.	Location			GPS Coordinate		Total Land Title Area (Ha)	Oil Palm Planted Area (Ha)	Date Joining
				Sub-District	District	Province	Latitude	Longitude			
55	59-02-27	Sutee Tongdoug	A	T.plaipraya	A.Plaipraya	Krabi	8.582612	98.921363	0.57	0.5696	08-01-12
56	59-02-28	Suwit Inbua	A	T.plaipraya	A.Plaipraya	Krabi	8.583857	98.914592	2.43	2.4272	08-01-12
57	59-02-29	Nuwan Phumkaeo	A	T.plaipraya	A.Plaipraya	Krabi	8.649045	99.025823	2.08	2.0800	08-01-12
58	59-02-30	Anan Chaunklin	A	T.plaipraya	A.Plaipraya	Krabi	8.666742	98.898886	2.94	2.9360	08-01-12
	59-02-30	Anan Chaunklin	B	T.plaipraya	A.Plaipraya	Krabi	8.656201	98.893608	1.81	1.8112	08-01-12
59	59-02-31	Aroon Kongsri	A	T.plaipraya	A.Plaipraya	Krabi	8.655778	98.889105	1.29	0.6496	08-01-12
60	59-02-32	Arrom Thongrot	A	T.plaipraya	A.Plaipraya	Krabi	8.555695	98.974453	2.84	2.8384	08-01-12
	59-02-32	Arrom Thongrot	B	T.plaipraya	A.Plaipraya	Krabi	8.574367	98.923152	2.10	2.0992	08-01-12
61	59-03-01	Kanjana Jamsakul	A	T.plaipraya	A.Plaipraya	Krabi	8.670564	99.003603	3.40	3.4048	08-01-12
	59-03-01	Kanjana Jamsakul	B	T.plaipraya	A.Plaipraya	Krabi	8.587368	98.928867	4.00	4.0000	08-01-12
62	59-03-02	Kriangsak Nuannoon	A	T.plaipraya	A.Plaipraya	Krabi	8.549321	98.905866	3.20	2.4000	08-01-12
63	59-03-03	Nantida Churuang	A	T.plaipraya	A.Plaipraya	Krabi	8.541802	98.903482	4.52	4.5200	08-01-12
64	59-03-04	Kamnueng Nuannun	A	T.plaipraya	A.Plaipraya	Krabi	8.544081	98.898885	2.72	2.7200	08-01-12



**BUREAU
VERITAS**

No.	Member's ID	Smallholder's Name	Plot No.	Location			GPS Coordinate		Total Land Title Area (Ha)	Oil Palm Planted Area (Ha)	Date Joining
				Sub-District	District	Province	Latitude	Longitude			
	59-03-04	Kamnueng Nuannun	B	Tplaipraya	A.Plaipraya	Krabi	8.542208	98.900872	5.60	5.6000	08-01-12
	59-03-04	Kamnueng Nuannun	C	Tplaipraya	A.Plaipraya	Krabi	8.554324	98.895283	5.37	5.2096	08-01-12
65	59-03-06	Chaloemphon Nimnuan	A	T.plaipraya	A.Plaipraya	Krabi	8.577828	98.900273	4.56	2.8800	08-01-12
66	59-03-07	Duang Songsri	A	T.plaipraya	A.Plaipraya	Krabi	8.558815	98.914021	1.92	1.9200	08-01-12
	59-03-07	Duang Songsri	B	T.plaipraya	A.Plaipraya	Krabi	8.572321	98.908619	1.62	1.6200	08-01-12
	59-03-07	Duang Songsri	C	T.plaipraya	A.Plaipraya	Krabi	8.571149	98.901677	2.15	1.1900	08-01-12
67	59-03-08	Damrong Jitrat	A	T.plaipraya	A.Plaipraya	Krabi	8.564377	98.902399	7.92	7.9200	08-01-12
68	59-03-09	Teerapon Suwannachot	A	Tplaipraya	A.Plaipraya	Krabi	8.564579	98.893728	5.87	3.3120	08-01-12
69	59-03-10	Nam Nuannun	A	Tplaipraya	A.Plaipraya	Krabi	8.538781	98.90034	4.52	4.5200	08-01-12
70	59-03-11	Bamroong Kraithip	A	Tplaipraya	A.Plaipraya	Krabi	8.560364	98.896224	6.62	4.8000	08-01-12
71	59-03-12	Boonsri Chudecha	A	Tplaipraya	A.Plaipraya	Krabi	8.550452	98.903114	5.36	5.2000	08-01-12
72	59-03-13	Pratheep Chusang	A	T.plaipraya	A.Plaipraya	Krabi	8.554168	98.917996	2.56	2.5600	08-01-12
	59-03-13	Pratheep Chusang	B	T.plaipraya	A.Plaipraya	Krabi	8.566704	98.902394	1.56	1.5616	08-01-12



**BUREAU
VERITAS**

No.	Member's ID	Smallholder's Name	Plot No.	Location			GPS Coordinate		Total Land Title Area (Ha)	Oil Palm Planted Area (Ha)	Date Joining
				Sub-District	District	Province	Latitude	Longitude			
	59-03-13	Pratheep Chusang	C	T.plaipraya	A.Plaipraya	Krabi	8.569212	98.903081	3.34	3.3424	08-01-12
	59-03-13	Pratheep Chusang	D	T.plaipraya	A.Plaipraya	Krabi	8.548361	98.789037	4.05	4.0496	08-01-12
	59-03-13	Pratheep Chusang	E	T.plaipraya	A.Plaipraya	Krabi	8.559714	98.911836	0.52	0.5200	08-01-12
	59-03-13	Pratheep Chusang	F	T.plaipraya	A.Plaipraya	Krabi	8.550506	98.899045	0.79	0.7936	08-01-12
73	59-03-14	Prapan Wunpan	A	T.plaipraya	A.Plaipraya	Krabi	8.571649	98.902819	3.08	3.0800	08-01-12
74	59-03-15	Prawing Budkrud	A	T.plaipraya	A.Plaipraya	Krabi	8.563533	98.89491	7.42	3.5200	08-01-12
	59-03-15	Prawing Budkrud	B	T.plaipraya	A.Plaipraya	Krabi	8.553635	98.906431	2.16	2.1648	08-01-12
	59-03-15	Prawing Budkrud	C	T.plaipraya	A.Plaipraya	Krabi	8.540897	98.900726	4.00	4.0000	08-01-12
75	59-03-16	Prasit Nuannoon	A	T.plaipraya	A.Plaipraya	Krabi	8.546803	98.901246	0.93	0.9296	08-01-12
	59-03-16	Prasit Nuannoon	B	T.plaipraya	A.Plaipraya	Krabi	8.55337	98.903392	0.66	0.6624	08-01-12
76	59-03-17	Prach Churuang	A	T.plaipraya	A.Plaipraya	Krabi	8.540892	98.904187	3.80	3.8000	08-01-12
	59-03-17	Prach Churuang	B	T.plaipraya	A.Plaipraya	Krabi	8.556362	98.898551	4.92	4.9200	08-01-12
	59-03-17	Prach Churuang	C	T.plaipraya	A.Plaipraya	Krabi	8.588441	98.924641	1.38	1.3776	08-01-12



**BUREAU
VERITAS**

No.	Member's ID	Smallholder's Name	Plot No.	Location			GPS Coordinate		Total Land Title Area (Ha)	Oil Palm Planted Area (Ha)	Date Joining
				Sub-District	District	Province	Latitude	Longitude			
77	59-03-18	Searmsak Kongkaew	A	T.plaipraya	A.Plaipraya	Krabi	8.657928	98.899357	9.60	9.1200	08-01-12
	59-03-18	Searmsak Kongkaew	B	T.plaipraya	A.Plaipraya	Krabi	8.653605	98.89273	2.16	2.1584	08-01-12
78	59-03-19	Fern Jamsakul	A	T.plaipraya	A.Plaipraya	Krabi	8.544044	98.899927	3.20	3.2000	08-01-12
	59-03-19	Fern Jamsakul	B	T.plaipraya	A.Plaipraya	Krabi	8.552297	98.903365	2.24	1.6016	08-01-12
79	59-03-20	Wittaya Jamsakul	A	T.plaipraya	A.Plaipraya	Krabi	8.572013	98.905391	8.16	2.5600	08-01-12
80	59-03-21	Wirat Nimnuan	A	T.plaipraya	A.Plaipraya	Krabi	8.578283	98.898217	6.01	6.0128	08-01-12
81	59-03-22	Wiroj Phettong	A	T.plaipraya	A.Plaipraya	Krabi	8.579572	98.901031	4.65	1.6000	08-01-12
82	59-03-23	Wisit Jamsakul	A	T.plaipraya	A.Plaipraya	Krabi	8.576576	98.914588	4.74	4.7392	08-01-12
83	59-03-24	Sa-nguan Phol-In	A	T.plaipraya	A.Plaipraya	Krabi	8.577678	98.902996	3.39	0.9600	08-01-12
84	59-03-25	Sombat Chusang	A	T.plaipraya	A.Plaipraya	Krabi	8.568185	98.903089	2.84	2.8384	08-01-12
85	59-03-26	Sommoong Jamsakul	A	T.plaipraya	A.Plaipraya	Krabi	8.581074	98.910145	7.64	7.6400	08-01-12
86	59-03-28	Saijai Nasinprom	A	T.plaipraya	A.Plaipraya	Krabi	8.56309	98.899375	4.65	4.6544	08-01-12
	59-03-28	Saijai Nasinprom	B	T.plaipraya	A.Plaipraya	Krabi	8.561483	98.899358	4.51	4.5104	08-01-12



**BUREAU
VERITAS**

No.	Member's ID	Smallholder's Name	Plot No.	Location			GPS Coordinate		Total Land Title Area (Ha)	Oil Palm Planted Area (Ha)	Date Joining
				Sub-District	District	Province	Latitude	Longitude			
	59-03-28	Saijai Nasinprom	C	T.plaipraya	A.Plaipraya	Krabi	8.561666	98.900722	5.55	5.5504	08-01-12
87	59-03-29	Suwan Thongprasert	A	T.plaipraya	A.Plaipraya	Krabi	8.573762	98.904597	4.93	4.9280	08-01-12
	59-03-29	Suwan Thongprasert	B	T.plaipraya	A.Plaipraya	Krabi	8.575819	98.905126	0.43	0.4320	08-01-12
	59-03-29	Suwan Thongprasert	C	T.plaipraya	A.Plaipraya	Krabi	8.564867	98.910505	1.06	0.4800	08-01-12
88	59-03-30	Yupha Nuannun	A	T.plaipraya	A.Plaipraya	Krabi	8.543621	98.901545	3.20	3.2000	08-01-12
89	59-03-31	Seri Chudecha	A	T.plaipraya	A.Plaipraya	Krabi	8.545727	98.898739	2.88	2.4000	08-01-12
90	59-03-33	Anuwat Kongdee	A	T.plaipraya	A.Plaipraya	Krabi	8.577287	98.903973	0.96	0.9600	08-01-12
91	59-03-34	Arom Nuannoon	A	T.plaipraya	A.Plaipraya	Krabi	8.540936	98.908848	2.88	2.8800	08-01-12
92	59-04-01	Kanyaphak Kaenkaeo	A	T.plaipraya	A.Plaipraya	Krabi	8.559671	98.900357	3.24	3.2384	08-01-12
	59-04-01	Kanyaphak Kaenkaeo	B	T.plaipraya	A.Plaipraya	Krabi	8.562699	98.916389	2.08	2.0800	08-01-12
93	59-04-02	Kwanjit Kewkao	A	T.plaipraya	A.Plaipraya	Krabi	8.560627	98.897784	4.89	1.7600	08-01-12
94	59-04-04	Jula Satetakarn	A (A+B+D)	T.plaipraya	A.Plaipraya	Krabi	8.566622	98.907696	3.73	3.7344	08-01-12
	59-04-04	Jula Satetakarn	C	T.plaipraya	A.Plaipraya	Krabi	8.567847	98.908113	1.69	1.6928	08-01-12



**BUREAU
VERITAS**

No.	Member's ID	Smallholder's Name	Plot No.	Location			GPS Coordinate		Total Land Title Area (Ha)	Oil Palm Planted Area (Ha)	Date Joining
				Sub-District	District	Province	Latitude	Longitude			
	59-04-04	Jula Satetakarn	E	T.plaipraya	A.Plaipraya	Krabi	8.558119	98.910492	0.75	0.7520	08-01-12
	59-04-04	Jula Satetakarn	F	T.plaipraya	A.Plaipraya	Krabi	8.549651	98.908555	0.88	0.8800	08-01-12
95	59-04-06	Term Nuannoon	A	T.plaipraya	A.Plaipraya	Krabi	8.547886	98.906288	2.40	2.4000	08-01-12
96	59-04-07	Tiwakorn Songsri	A	T.plaipraya	A.Plaipraya	Krabi	8.543145	98.88742	2.95	2.9456	08-01-12
97	59-04-09	Wanlapha Chamsakul	A	T.plaipraya	A.Plaipraya	Krabi	8.580598	98.9187	0.88	0.8800	08-01-12
98	59-04-10	Paphan Chudecha	A	T.plaipraya	A.Plaipraya	Krabi	8.564886	98.905189	1.93	1.9344	08-01-12
	59-04-10	Paphan Chudecha	B	T.plaipraya	A.Plaipraya	Krabi	8.608453	99.053693	1.88	1.8800	08-01-12
99	59-04-11	Praphat Chimrourng	A	T.plaipraya	A.Plaipraya	Krabi	8.556253	98.901597	0.38	0.3760	08-01-12
	59-04-11	Praphat Chimrourng	B	T.plaipraya	A.Plaipraya	Krabi	8.56173	98.912733	1.86	1.8640	08-01-12
100	59-04-12	Panthip Choosang	A	T.plaipraya	A.Plaipraya	Krabi	8.569186	98.901584	3.04	3.0368	08-01-12
101	59-04-13	Pichet Yuansete	A	T.plaipraya	A.Plaipraya	Krabi	8.566802	98.923597	1.44	1.2800	08-01-12
102	59-04-14	Phanthira Promsuwan	A	T.plaipraya	A.Plaipraya	Krabi	8.557032	98.890114	3.84	2.7168	08-01-12
103	59-04-15	Montri Kwanduan	A	T.plaipraya	A.Plaipraya	Krabi	8.564245	98.896358	3.24	3.2400	08-01-12



**BUREAU
VERITAS**

No.	Member's ID	Smallholder's Name	Plot No.	Location			GPS Coordinate		Total Land Title Area (Ha)	Oil Palm Planted Area (Ha)	Date Joining
				Sub-District	District	Province	Latitude	Longitude			
104	59-04-16	Lai Kaikaeo	A	T.plaipraya	A.Plaipraya	Krabi	8.574658	98.907173	2.46	2.4608	08-01-12
105	59-04-17	Aranyawut Khwunduen	A	T.plaipraya	A.Plaipraya	Krabi	8.566306	98.894609	2.44	2.4096	08-01-12
106	59-04-18	Wichan Areekarn	A	T.plaipraya	A.Plaipraya	Krabi	8.570246	98.906937	2.60	2.5968	08-01-12
	59-04-18	Wichan Areekarn	B	T.plaipraya	A.Plaipraya	Krabi	8.573699	98.907781	1.49	1.4864	08-01-12
	59-04-18	Wichan Areekarn	C	T.plaipraya	A.Plaipraya	Krabi	8.576013	98.908489	1.29	1.2880	08-01-12
107	59-04-19	Wimon Kokrating	A	T.plaipraya	A.Plaipraya	Krabi	8.578358	98.919012	1.30	1.3008	08-01-12
	59-04-19	Wimon Kokrating	B	T.plaipraya	A.Plaipraya	Krabi	8.569055	98.922799	2.48	2.4800	08-01-12
	59-04-19	Wimon Kokrating	C	T.plaipraya	A.Plaipraya	Krabi	8.576495	98.904061	0.32	0.3216	08-01-12
	59-04-19	Wimon Kokrating	D	T.plaipraya	A.Plaipraya	Krabi	8.496001	98.782196	2.13	2.1344	08-01-12
108	59-04-20	Wirat Promraksa	A	T.plaipraya	A.Plaipraya	Krabi	8.564172	98.92526	2.28	2.2800	08-01-12
109	59-04-21	Sontaya Rattanaburanin	A	T.plaipraya	A.Plaipraya	Krabi	8.607516	98.941536	2.48	2.4800	08-01-12
	59-04-21	Sontaya Rattanaburanin	B	T.plaipraya	A.Plaipraya	Krabi	8.551156	98.898836	2.11	2.1088	08-01-12
110	59-04-23	Sakhon Jebjong	A	T.plaipraya	A.Plaipraya	Krabi	8.563193	98.915692	3.20	3.2000	08-01-12



**BUREAU
VERITAS**

No.	Member's ID	Smallholder's Name	Plot No.	Location			GPS Coordinate		Total Land Title Area (Ha)	Oil Palm Planted Area (Ha)	Date Joining
				Sub-District	District	Province	Latitude	Longitude			
111	59-04-25	Samrueng Kriengkamol	A	T.plaipraya	A.Plaipraya	Krabi	8.573627	98.920042	2.95	2.9472	08-01-12
112	59-04-26	Suchat Hitaro	A	T.plaipraya	A.Plaipraya	Krabi	8.54188	98.905724	1.28	1.2800	08-01-12
113	59-04-27	Suwit Samsuwan	A	T.plaipraya	A.Plaipraya	Krabi	8.578669	98.895743	3.14	3.1376	08-01-12
	59-04-27	Suwit Samsuwan	C	T.plaipraya	A.Plaipraya	Krabi	8.55615	98.910026	1.33	1.3312	08-01-12
114	59-04-28	Hasanai Dumplub	A	T.plaipraya	A.Plaipraya	Krabi	8.573199	98.890896	2.31	0.4800	08-01-12
115	59-04-29	Alisa Na Phayab	A	T.plaipraya	A.Plaipraya	Krabi	8.65625	98.789968	6.12	6.1184	08-01-12
116	59-04-30	Armon Prachumyut	A	T.plaipraya	A.Plaipraya	Krabi	8.562347	98.892181	1.60	1.5968	08-01-12
	59-04-30	Armon Prachumyut	B	T.plaipraya	A.Plaipraya	Krabi	8.572852	98.894014	0.78	0.7840	08-01-12
	59-04-30	Armon Prachumyut	C	T.plaipraya	A.Plaipraya	Krabi	8.586422	98.907876	1.09	1.0912	08-01-12
117	59-04-31	Ouen Rakkhlai	A	T.plaipraya	A.Plaipraya	Krabi	8.574728	98.90918	6.18	6.1792	08-01-12
118	59-04-32	Parinya Nuannoon	A	T.plaipraya	A.Plaipraya	Krabi	8.581649	98.881051	4.14	4.1440	08-01-12
119	59-04-33	Phat Aun-ok	A	T.plaipraya	A.Plaipraya	Krabi	8.578217	98.904213	1.20	1.2000	08-01-12
120	59-04-34	Aumaphon Setthakan	A	T.plaipraya	A.Plaipraya	Krabi	8.567393	98.901344	1.60	1.6000	08-01-12



**BUREAU
VERITAS**

No.	Member's ID	Smallholder's Name	Plot No.	Location			GPS Coordinate		Total Land Title Area (Ha)	Oil Palm Planted Area (Ha)	Date Joining
				Sub-District	District	Province	Latitude	Longitude			
	59-04-34	Aumaphon Setthakan	B	T.plaipraya	A.Plaipraya	Krabi	8.565594	98.906438	3.84	3.8400	08-01-12
121	59-05-01	Kanya Praiduk	A	T.plaipraya	A.Plaipraya	Krabi	8.590943	98.896416	5.24	3.6368	08-01-12
	59-05-01	Kanya Praiduk	B	T.plaipraya	A.Plaipraya	Krabi	8.583481	98.900051	0.67	0.6656	08-01-12
	59-05-01	Kanya Praiduk	C	T.plaipraya	A.Plaipraya	Krabi	8.602124	98.921638	2.47	2.4688	08-01-12
122	59-05-02	Joi Phetkete	A	T.plaipraya	A.Plaipraya	Krabi	8.587439	98.90239	1.58	1.5040	08-01-12
	59-05-02	Joi Phetkete	B	T.plaipraya	A.Plaipraya	Krabi	8.60166	98.8809	0.56	0.5552	08-01-12
	59-05-02	Joi Phetkete	C	T.plaipraya	A.Plaipraya	Krabi	8.648782	98.865719	1.58	1.5840	08-01-12
	59-05-02	Joi Phetkete	D	T.plaipraya	A.Plaipraya	Krabi	8.586358	98.896215	0.69	0.6944	08-01-12
123	59-05-03	Jamlong Phettong	A	T.plaipraya	A.Plaipraya	Krabi	8.591529	98.898094	7.85	7.2144	08-01-12
124	59-05-04	Chuanchai Chusing	A	T.plaipraya	A.Plaipraya	Krabi	8.593753	98.906657	1.95	0.5920	08-01-12
	59-05-04	Chuanchai Chusing	B	T.plaipraya	A.Plaipraya	Krabi	8.588253	98.911249	0.90	0.8976	08-01-12
	59-05-04	Chuanchai Chusing	C	T.plaipraya	A.Plaipraya	Krabi	8.587781	98.908348	1.40	1.4000	08-01-12
125	59-05-05	Chamnan Thongkaeo	A	T.plaipraya	A.Plaipraya	Krabi	8.672923	98.879795	0.98	0.9824	08-01-12



**BUREAU
VERITAS**

No.	Member's ID	Smallholder's Name	Plot No.	Location			GPS Coordinate		Total Land Title Area (Ha)	Oil Palm Planted Area (Ha)	Date Joining
				Sub-District	District	Province	Latitude	Longitude			
	59-05-05	Chamnan Thongkaeo	B	T.plaipraya	A.Plaipraya	Krabi	8.649084	98.887056	0.97	0.9728	08-01-12
	59-05-05	Chamnan Thongkaeo	C	T.plaipraya	A.Plaipraya	Krabi	8.659108	98.88456	2.18	1.2224	08-01-12
	59-05-05	Chamnan Thongkaeo	D	T.plaipraya	A.Plaipraya	Krabi	8.657315	98.880078	1.57	1.5664	08-01-12
126	59-05-06	Narong Chaitong	A	T.plaipraya	A.Plaipraya	Krabi	8.586884	98.898636	5.84	3.1232	08-01-12
	59-05-06	Narong Chaitong	B	T.plaipraya	A.Plaipraya	Krabi	8.534289	98.743517	0.80	0.8000	08-01-12
127	59-05-07	Daowilai Sanjorn	A	T.plaipraya	A.Plaipraya	Krabi	8.581668	98.895453	3.04	3.0400	08-01-12
128	59-05-08	Boonsong Kongchan	A	T.plaipraya	A.Plaipraya	Krabi	8.58909	98.903286	0.88	0.7152	08-01-12
	59-05-08	Boonsong Kongchan	B	T.plaipraya	A.Plaipraya	Krabi	8.588114	98.902597	1.58	1.5760	08-01-12
129	59-05-09	Bunoiu Hwangasuk	A	T.plaipraya	A.Plaipraya	Krabi	8.649799	98.88946	1.13	1.1280	08-01-12
	59-05-09	Bunoiu Hwangasuk	B	T.plaipraya	A.Plaipraya	Krabi	8.651818	98.885299	0.92	0.9200	08-01-12
130	59-05-10	Prajak Chaitong	A	T.plaipraya	A.Plaipraya	Krabi	8.585913	98.902557	1.20	1.0352	08-01-12
	59-05-10	Prajak Chaitong	B	T.plaipraya	A.Plaipraya	Krabi	8.593683	98.899109	14.22	3.1000	08-01-12
	59-05-10	Prajak Chaitong	C	T.plaipraya	A.Plaipraya	Krabi	8.584801	98.867631	4.75	9.7400	08-01-12



**BUREAU
VERITAS**

No.	Member's ID	Smallholder's Name	Plot No.	Location			GPS Coordinate		Total Land Title Area (Ha)	Oil Palm Planted Area (Ha)	Date Joining
				Sub-District	District	Province	Latitude	Longitude			
	59-05-10	Prajak Chaitong	D	T.plaipraya	A.Plaipraya	Krabi	8.593099	98.904377	0.91	4.7500	08-01-12
	59-05-10	Prajak Chaitong	E	T.plaipraya	A.Plaipraya	Krabi	8.588696	98.894043	3.10	0.9100	08-01-12
131	59-05-11	Pravet DOUNGCHUI	A	T.plaipraya	A.Plaipraya	Krabi	8.586302	98.902449	0.75	0.6672	08-01-12
	59-05-11	Pravet DOUNGCHUI	B	T.plaipraya	A.Plaipraya	Krabi	8.581647	98.8982	3.55	2.4288	08-01-12
	59-05-11	Pravet DOUNGCHUI	C	T.plaipraya	A.Plaipraya	Krabi	8.580865	98.904747	2.40	2.4000	08-01-12
	59-05-11	Pravet DOUNGCHUI	D	T.plaipraya	A.Plaipraya	Krabi	8.593983	98.904546	2.20	2.1984	08-01-12
132	59-05-12	Prasong Pongrat	A	T.plaipraya	A.Plaipraya	Krabi	8.590226	98.910001	6.61	6.4464	08-01-12
133	59-05-13	Amphan Sonnoi (Pun Sonnoi)	A	T.plaipraya	A.Plaipraya	Krabi	8.58533	98.892666	4.36	2.7584	08-01-12
	59-05-13	Amphan Sonnoi	B	T.plaipraya	A.Plaipraya	Krabi	8.583028	98.899502	2.06	1.5824	08-01-12
134	59-05-14	Pongsak Choo-In	A	T.plaipraya	A.Plaipraya	Krabi	8.662086	98.877086	1.97	1.9696	08-01-12
135	59-05-15	Payong Nutongkaew	A	T.plaipraya	A.Plaipraya	Krabi	8.651863	98.88253	3.27	2.9856	08-01-12
136	59-05-16	Somnuek Tongkrieng	A	T.plaipraya	A.Plaipraya	Krabi	8.576247	98.912615	1.72	1.7200	08-01-12
137	59-05-17	Pennee Nuankao	A	T.plaipraya	A.Plaipraya	Krabi	8.663533	98.876967	1.22	1.2224	08-01-12



**BUREAU
VERITAS**

No.	Member's ID	Smallholder's Name	Plot No.	Location			GPS Coordinate		Total Land Title Area (Ha)	Oil Palm Planted Area (Ha)	Date Joining
				Sub-District	District	Province	Latitude	Longitude			
	59-05-17	Pennee Nuankao	B	T.plaipraya	A.Plaipraya	Krabi	8.649354	98.884824	0.97	0.9712	08-01-12
138	59-05-18	Mongkol Sanjorn	A	T.plaipraya	A.Plaipraya	Krabi	8.572314	98.926598	6.40	5.6000	08-01-12
	59-05-18	Mongkol Sanjorn	B	T.plaipraya	A.Plaipraya	Krabi	8.582748	98.895255	4.20	1.1600	08-01-12
139	59-05-19	Somnuek Kittinontawat	A	T.plaipraya	A.Plaipraya	Krabi	8.649914	98.892192	4.74	4.6576	08-01-12
140	59-05-20	Mat Thammabut	A	T.plaipraya	A.Plaipraya	Krabi	8.576826	98.911815	3.99	3.7504	08-01-12
141	59-05-21	La-ong Kongvun	A	T.plaipraya	A.Plaipraya	Krabi	8.582363	98.896993	3.24	1.7968	08-01-12
	59-05-21	La-ong Kongvun	B	T.plaipraya	A.Plaipraya	Krabi	8.583459	98.896355	1.14	1.1408	08-01-12
	59-05-21	La-ong Kongvun	C	T.plaipraya	A.Plaipraya	Krabi	8.582219	98.904363	2.64	0.4800	08-01-12
142	59-05-23	Witton Pientong	A	T.plaipraya	A.Plaipraya	Krabi	8.656171	98.892599	1.00	0.8352	08-01-12
143	59-05-24	Somchok Chuywong	A	T.plaipraya	A.Plaipraya	Krabi	8.588465	98.896167	2.16	2.1648	08-01-12
	59-05-24	Somchok Chuywong	B	T.plaipraya	A.Plaipraya	Krabi	8.583472	98.892458	4.53	4.5312	08-01-12
144	59-05-25	Samrit Chuywong	A	T.plaipraya	A.Plaipraya	Krabi	8.583436	98.894102	3.68	3.6800	08-01-12
145	59-05-26	Sanran Sookkaew	A	T.plaipraya	A.Plaipraya	Krabi	8.650345	98.887612	1.01	0.9280	08-01-12



**BUREAU
VERITAS**

No.	Member's ID	Smallholder's Name	Plot No.	Location			GPS Coordinate		Total Land Title Area (Ha)	Oil Palm Planted Area (Ha)	Date Joining
				Sub-District	District	Province	Latitude	Longitude			
146	59-05-27	Sutatip Chudat	A	T.plaipraya	A.Plaipraya	Krabi	8.651067	98.918082	1.76	1.7600	08-01-12
	59-05-27	Sutatip Chudat	B	T.plaipraya	A.Plaipraya	Krabi	8.587322	98.910719	1.06	1.0592	08-01-12
147	59-05-28	Sophawan Sangnun	A	T.plaipraya	A.Plaipraya	Krabi	8.590841	98.903852	1.60	1.6000	08-01-12
	59-05-28	Sophawan Sangnun	B	T.plaipraya	A.Plaipraya	Krabi	8.594322	98.899697	1.68	1.6768	08-01-12
	59-05-28	Sophawan Sangnun	C	T.plaipraya	A.Plaipraya	Krabi	8.592864	98.896673	6.41	6.4144	08-01-12
148	59-05-30	Op Phet-on	A	T.plaipraya	A.Plaipraya	Krabi	8.58084	98.899647	2.96	2.9568	08-01-12
	59-05-30	Op Phet-on	B	T.plaipraya	A.Plaipraya	Krabi	8.590373	98.904232	1.95	1.9536	08-01-12
149	59-05-32	Arom Buatong	A	T.plaipraya	A.Plaipraya	Krabi	8.589948	98.898233	4.70	4.5376	08-01-12
150	59-06-01	Khayan Thongkam	A	T.plaipraya	A.Plaipraya	Krabi	8.545716	98.856227	5.51	5.4912	08-01-12
	59-06-01	Khayan Thongkam	B	T.plaipraya	A.Plaipraya	Krabi	8.547186	98.850755	6.99	6.9872	08-01-12
	59-06-01	Khayan Thongkam	C	T.plaipraya	A.Plaipraya	Krabi	8.55295	98.849109	7.13	7.1296	08-01-12
	59-06-01	Khayan Thongkam	D	T.plaipraya	A.Plaipraya	Krabi	8.53756	98.861549	7.44	7.4400	08-01-12
	59-06-01	Khayan Thongkam	E	T.plaipraya	A.Plaipraya	Krabi	8.549542	98.843346	3.45	3.4512	08-01-12



**BUREAU
VERITAS**

No.	Member's ID	Smallholder's Name	Plot No.	Location			GPS Coordinate		Total Land Title Area (Ha)	Oil Palm Planted Area (Ha)	Date Joining
				Sub-District	District	Province	Latitude	Longitude			
	59-06-01	Khayan Thongkam	F	T.plaipraya	A.Plaipraya	Krabi	8.547588	98.84582	6.52	6.5168	08-01-12
	59-06-01	Khayan Thongkam	H	T.plaipraya	A.Plaipraya	Krabi	8.553162	98.843908	2.35	2.3456	08-01-12
	59-06-01	Khayan Thongkam	J	T.plaipraya	A.Plaipraya	Krabi	8.534064	98.882629	2.79	2.7920	08-01-12
151	59-06-02	Jamnan Chootongdee	A	T.plaipraya	A.Plaipraya	Krabi	8.564155	98.873676	6.74	3.2240	08-01-12
152	59-06-03	Sakhon Uthaijam (Jean Dechsathit)	A	T.plaipraya	A.Plaipraya	Krabi	8.547326	98.843371	2.85	2.8464	08-01-12
	59-06-03	Sakhon Uthaijam (Jean Dechsathit)	B	T.plaipraya	A.Plaipraya	Krabi	8.540937	98.848419	0.52	0.5200	08-01-12
153	59-06-04	Natcha Ratanaprai	A	T.plaipraya	A.Plaipraya	Krabi	8.57151	98.872375	2.80	2.8000	08-01-12
154	59-06-05	Tanawat Ratanaprai	A	T.plaipraya	A.Plaipraya	Krabi	8.601797	98.834737	4.18	4.1800	08-01-12
	59-06-05	Tanawat Ratanaprai	B	T.plaipraya	A.Plaipraya	Krabi	8.41048	98.835603	4.10	4.1000	08-01-12
155	59-06-06	Tawatchai Setakarn	A	T.plaipraya	A.Plaipraya	Krabi	8.535154	98.872133	8.95	8.9488	08-01-12
	59-06-06	Tawatchai Setakarn	B	T.plaipraya	A.Plaipraya	Krabi	8.5444	98.863721	7.52	7.5200	08-01-12
156	59-06-07	Thanya Saelim	A	T.plaipraya	A.Plaipraya	Krabi	8.549179	98.868119	1.47	1.4672	08-01-12
	59-06-07	Thanya Saelim	B	T.plaipraya	A.Plaipraya	Krabi	8.565913	98.883562	5.64	5.6416	08-01-12



**BUREAU
VERITAS**

No.	Member's ID	Smallholder's Name	Plot No.	Location			GPS Coordinate		Total Land Title Area (Ha)	Oil Palm Planted Area (Ha)	Date Joining
				Sub-District	District	Province	Latitude	Longitude			
157	59-06-08	Subencha Somchan	A	T.plaipraya	A.Plaipraya	Krabi	8.558047	98.870524	4.43	2.0304	08-01-12
	59-06-08	Subencha Somchan	B	T.plaipraya	A.Plaipraya	Krabi	8.55531	98.879843	2.66	2.6608	08-01-12
	59-06-08	Subencha Somchan	C	T.plaipraya	A.Plaipraya	Krabi	8.557364	98.900682	4.70	4.6976	08-01-12
	59-06-08	Subencha Somchan	D	T.plaipraya	A.Plaipraya	Krabi	8.567758	98.907492	1.62	1.6192	08-01-12
158	59-06-09	Buncho Kaeosombun	A	T.plaipraya	A.Plaipraya	Krabi	8.585121	98.933068	6.88	6.6368	08-01-12
159	59-06-10	Prathueang Khotchawin	A (A+B)	T.plaipraya	A.Plaipraya	Krabi	8.580808	98.877371	8.97	7.3744	01-01-15
160	59-06-11	Prasert Somchan	A	T.plaipraya	A.Plaipraya	Krabi	8.578162	98.871535	1.89	1.8928	01-01-15
161	59-06-14	Chatrea Sakunbunma	A	T.plaipraya	A.Plaipraya	Krabi	8.580931	98.891386	3.84	3.8400	01-01-15
	59-06-14	Chatrea Sakunbunma	B	T.plaipraya	A.Plaipraya	Krabi	8.589455	98.86513	8.28	8.2752	01-01-15
	59-06-14	Chatrea Sakunbunma	C	T.plaipraya	A.Plaipraya	Krabi	8.564777	98.886314	4.00	4.0000	01-01-15
	59-06-14	Chatrea Sakunbunma	D	T.plaipraya	A.Plaipraya	Krabi	8.55535	98.88348	6.40	6.4000	01-01-15
	59-06-14	Chatrea Sakunbunma	E	T.plaipraya	A.Plaipraya	Krabi	8.57451	98.886484	2.40	2.4	01-01-15
162	59-06-15	Malee Somchan	A	T.plaipraya	A.Plaipraya	Krabi	8.555247	98.881153	3.12	3.1200	01-01-15



**BUREAU
VERITAS**

No.	Member's ID	Smallholder's Name	Plot No.	Location			GPS Coordinate		Total Land Title Area (Ha)	Oil Palm Planted Area (Ha)	Date Joining
				Sub-District	District	Province	Latitude	Longitude			
	59-06-15	Malee Somchan	B	T.plaipraya	A.Plaipraya	Krabi	8.642273	98.953969	3.89	3.8928	01-01-15
	59-06-15	Malee Somchan	C	T.plaipraya	A.Plaipraya	Krabi	8.553457	98.874387	0.67	0.6688	01-01-15
	59-06-15	Malee Somchan	D	T.plaipraya	A.Plaipraya	Krabi	8.55352	98.87526	1.09	1.0928	01-01-15
	59-06-15	Malee Somchan	E	T.plaipraya	A.Plaipraya	Krabi	8.496148	98.851295	1.56	1.5600	01-01-15
163	59-06-16	Rattana Nuannoon	A	T.plaipraya	A.Plaipraya	Krabi	8.57311	98.877838	1.64	1.6448	01-01-15
164	59-06-17	Ratri Oonkhwan	A	T.plaipraya	A.Plaipraya	Krabi	8.659202	98.887304	5.20	5.2016	01-01-15
	59-06-17	Ratri Oonkhwan	B	T.plaipraya	A.Plaipraya	Krabi	8.559437	98.820194	1.92	1.9200	01-01-15
165	59-06-18	Wandee Saeleang	A	T.plaipraya	A.Plaipraya	Krabi	8.552147	98.86033	1.35	1.3520	01-01-15
	59-06-18	Wandee Saeleang	B	T.plaipraya	A.Plaipraya	Krabi	8.535813	98.867339	0.88	0.8784	01-01-15
	59-06-18	Wandee Saeleang	C	T.plaipraya	A.Plaipraya	Krabi	8.533295	98.882514	2.53	2.5264	01-01-15
166	59-06-19	Wasana Thepburee	A	T.plaipraya	A.Plaipraya	Krabi	8.56919	98.869533	10.78	9.8208	01-01-15
167	59-06-22	Surada Phetcharanon	A	T.plaipraya	A.Plaipraya	Krabi	8.467941	98.890153	6.48	6.3248	01-01-15
	59-06-22	Surada Phetcharanon	B	T.plaipraya	A.Plaipraya	Krabi	8.419293	98.825386	3.76	3.7600	01-01-15



**BUREAU
VERITAS**

No.	Member's ID	Smallholder's Name	Plot No.	Location			GPS Coordinate		Total Land Title Area (Ha)	Oil Palm Planted Area (Ha)	Date Joining
				Sub-District	District	Province	Latitude	Longitude			
168	59-06-24	Sombat Tongsook	A	T.plaipraya	A.Plaipraya	Krabi	8.553862	98.869777	6.39	3.2000	01-01-15
169	59-06-25	Sayan Dechsathit	A	T.plaipraya	A.Plaipraya	Krabi	8.552371	98.866025	2.62	2.0720	01-01-15
	59-06-25	Sayan Dechsathit	C	T.plaipraya	A.Plaipraya	Krabi	8.549693	98.867411	3.12	3.1200	01-01-15
170	59-06-26	Sarapee Yunoo	A	T.plaipraya	A.Plaipraya	Krabi	8.58961	98.852927	2.08	1.1200	01-01-15
	59-06-26	Sarapee Yunoo	B	T.plaipraya	A.Plaipraya	Krabi	8.591785	98.854316	4.09	1.9200	01-01-15
	59-06-26	Sarapee Yunoo	C	T.plaipraya	A.Plaipraya	Krabi	8.597573	98.854329	3.68	1.7600	01-01-15
171	59-06-27	Salee Kaewkampang	A	T.plaipraya	A.Plaipraya	Krabi	8.571525	98.875543	1.57	1.5728	01-01-15
	59-06-27	Salee Kaewkampang	B	T.plaipraya	A.Plaipraya	Krabi	8.568124	98.872215	1.62	1.6208	01-01-15
172	59-06-28	Sittichai Vongsoonthorn	A	T.Kho-Khen	A.Plaipraya	Krabi	8.538551	98.896562	5.12	5.1200	01-01-15
173	59-06-29	Sujin Chimkaew	A	T.plaipraya	A.Plaipraya	Krabi	8.573387	98.889619	3.51	3.5120	01-01-15
174	59-06-30	Sunai Kongpan	A	T.plaipraya	A.Plaipraya	Krabi	8.572706	98.875558	1.77	1.7664	01-01-15
	59-06-30	Sunai Kongpan	D	T.plaipraya	A.Plaipraya	Krabi	8.548922	98.882308	1.98	1.0192	01-01-15
175	59-06-31	Supan Kamsoot	A	T.Bangsawan	A.Prasaeng	Suratthani	8.600319	98.913323	1.16	1.1600	01-01-15



**BUREAU
VERITAS**

No.	Member's ID	Smallholder's Name	Plot No.	Location			GPS Coordinate		Total Land Title Area (Ha)	Oil Palm Planted Area (Ha)	Date Joining
				Sub-District	District	Province	Latitude	Longitude			
	59-06-31	Supan Kamsoot	B	T.Bangsawan	A.Prasaeng	Suratthan i	8.649222	98.917596	0.68	0.6800	01-01-15
176	59-06-32	Suphit somchan	A	T.plaipraya	A.Plaipraya	Krabi	8.594112	98.882038	5.08	4.9952	01-01-15
177	59-06-34	Suriya Rattananupong	A	T.plaipraya	A.Plaipraya	Krabi	8.571705	98.887567	3.18	3.1840	01-01-15
178	59-06-35	Saowapa Khumthong	A (A+B+D)	T.plaipraya	A.Plaipraya	Krabi	8.55792	98.862972	4.57	4.5712	01-01-15
	59-06-35	Saowapa Khumthong	C	T.plaipraya	A.Plaipraya	Krabi	8.55599	98.867634	1.20	1.2000	01-01-15
179	59-06-36	Sophon Detsathit	A	T.plaipraya	A.Plaipraya	Krabi	8.549253	98.865245	2.85	2.8496	01-01-15
180	59-06-37	Anuwat Choodecha	A	T.plaipraya	A.Plaipraya	Krabi	8.552111	98.901867	3.20	3.1968	01-01-15
	59-06-37	Anuwat Choodecha	B	T.plaipraya	A.Plaipraya	Krabi	8.565127	98.893033	1.19	1.1904	01-01-15
181	59-06-38	Udom Kuyoksui	A	T.plaipraya	A.Plaipraya	Krabi	8.510748	98.826857	2.01	2.0128	01-01-15
	59-06-38	Udom Kuyoksui	B	T.plaipraya	A.Plaipraya	Krabi	8.507865	98.828813	1.01	1.0128	01-01-15
	59-06-38	Udom Kuyoksui	C	T.plaipraya	A.Plaipraya	Krabi	8.502764	98.828835	1.59	1.5904	01-01-15
	59-06-38	Udom Kuyoksui	D	T.plaipraya	A.Plaipraya	Krabi	8.496837	98.828862	1.99	1.9920	01-01-15
182	59-06-39	Ekapot Khamnoo	A	T.plaipraya	A.Plaipraya	Krabi	8.539144	98.856794	7.92	7.9248	08-01-12



**BUREAU
VERITAS**

No.	Member's ID	Smallholder's Name	Plot No.	Location			GPS Coordinate		Total Land Title Area (Ha)	Oil Palm Planted Area (Ha)	Date Joining
				Sub-District	District	Province	Latitude	Longitude			
	59-06-39	Ekapot Khamnoo	B	T.plaipraya	A.Plaipraya	Krabi	8.536839	98.869801	1.32	1.3248	08-01-12
	59-06-39	Ekapot Khamnoo	C	T.plaipraya	A.Plaipraya	Krabi	8.55879	98.8807	3.81	3.8080	08-01-12
	59-06-39	Ekapot Khamnoo	D	T.plaipraya	A.Plaipraya	Krabi	8.557895	98.904226	2.60	2.6000	08-01-12
	59-06-39	Ekapot Khamnoo	E	T.plaipraya	A.Plaipraya	Krabi	8.554778	98.847118	3.66	3.6608	08-01-12
	59-06-39	Ekapot Khamnoo	F	T.plaipraya	A.Plaipraya	Krabi	8.540886	98.86203	1.58	1.5776	08-01-12
	59-06-39	Ekapot Khamnoo	G	T.plaipraya	A.Plaipraya	Krabi	8.541832	98.861516	2.13	2.1344	08-01-12
	59-06-39	Ekapot Khamnoo	H	T.plaipraya	A.Plaipraya	Krabi	8.604574	99.003349	2.39	2.3936	08-01-12
	59-06-39	Ekapot Khamnoo	I	T.plaipraya	A.Plaipraya	Krabi	8.616506	99.018873	1.60	1.6000	08-01-12
	59-06-39	Ekapot Khamnoo	J	T.plaipraya	A.Plaipraya	Krabi	8.488479	98.83082	0.86	0.8560	08-01-12
183	60-01-02	Benyapha Sriwang	A	T.plaipraya	A.Plaipraya	Krabi	8.651112	98.900949	7.87	7.7936	01-01-17
184	60-01-03	Montri Sepsang	A	T.plaipraya	A.Plaipraya	Krabi	8.583378	98.916019	7.15	7.1488	01-01-17
185	60-01-04	Samai Khummit	B	T.plaipraya	A.Plaipraya	Krabi	8.583255	98.911689	2.71	2.7104	01-01-17
186	60-01-05	Adison Thaochu	A	T.plaipraya	A.Plaipraya	Krabi	8.655967	98.883116	1.92	1.9200	01-01-17



**BUREAU
VERITAS**

No.	Member's ID	Smallholder's Name	Plot No.	Location			GPS Coordinate		Total Land Title Area (Ha)	Oil Palm Planted Area (Ha)	Date Joining
				Sub-District	District	Province	Latitude	Longitude			
	60-01-05	Adison Thaochu	B	T.plaipraya	A.Plaipraya	Krabi	8.669819	98.878064	1.60	1.6000	01-01-17
187	60-01-06	Pitchayanon Pricha	A	T.E-Pun	A.Prasaeng	Suratthani	8.677487	98.876264	6.56	6.5600	01-01-17
188	60-02-01	Chawee Uoon-ok	A	T.plaipraya	A.Plaipraya	Krabi	8.572805	98.910289	4.28	4.2752	01-01-17
189	60-02-02	Praniab Aunok	A	T.plaipraya	A.Plaipraya	Krabi	8.567254	98.918156	5.28	5.2784	01-01-17
190	60-03-01	Sirinya Najaroeay	A	T.plaipraya	A.Plaipraya	Krabi	8.568883	98.906327	0.99	0.8300	01-01-17
	60-03-01	Sirinya Najaroeay	B	T.plaipraya	A.Plaipraya	Krabi	8.562549	98.911675	1.32	1.3200	01-01-17
	60-03-01	Sirinya Najaroeay	C	T.plaipraya	A.Plaipraya	Krabi	8.574339	98.906128	1.92	1.9200	01-01-17
191	60-03-02	Somphong Phuangthong	A	T.plaipraya	A.Plaipraya	Krabi	8.569695	98.904826	4.77	4.7744	01-01-17
	60-03-02	Somphong Phuangthong	B	T.plaipraya	A.Plaipraya	Krabi	8.574834	98.910854	1.76	1.7600	01-01-17
192	60-04-01	Bunmi Phonthawi	A	T.plaipraya	A.Plaipraya	Krabi	8.561861	98.907792	1.12	1.1168	01-01-17
	60-04-01	Bunmi Phonthawi	B	T.plaipraya	A.Plaipraya	Krabi	8.558246	98.916655	2.40	2.4000	01-01-17
	60-04-01	Bunmi Phonthawi	C	T.plaipraya	A.Plaipraya	Krabi	8.564633	98.916003	1.44	1.4400	01-01-17
193	60-04-02	Angkhajin Pronsvan	A	T.plaipraya	A.Plaipraya	Krabi	8.55625	98.890781	0.54	0.5360	01-01-17



**BUREAU
VERITAS**

No.	Member's ID	Smallholder's Name	Plot No.	Location			GPS Coordinate		Total Land Title Area (Ha)	Oil Palm Planted Area (Ha)	Date Joining
				Sub-District	District	Province	Latitude	Longitude			
	60-04-02	Angkhajin Pronsuwan	B	T.plaipraya	A.Plaipraya	Krabi	8.558014	98.892461	11.76	11.7600	01-01-17
	60-04-02	Angkhajin Pronsuwan	C	T.plaipraya	A.Plaipraya	Krabi	8.545151	98.900978	3.04	3.0400	01-01-17
	60-04-02	Angkhajin Pronsuwan	D	T.plaipraya	A.Plaipraya	Krabi	8.550485	98.909716	1.76	1.7600	01-01-17
	60-04-02	Angkhajin Pronsuwan	E	T.plaipraya	A.Plaipraya	Krabi	8.547041	98.905616	0.80	0.8000	01-01-17
194	60-05-01	Arnuai Aunok	A	T.plaipraya	A.Plaipraya	Krabi	8.578181	98.914039	1.75	1.7520	01-01-17
195	60-05-02	Sukhon Chaithong	A	T.plaipraya	A.Plaipraya	Krabi	8.593463	98.904436	1.67	1.6672	01-01-17
	60-05-02	Sukhon Chaithong	B	T.plaipraya	A.Plaipraya	Krabi	8.593425	98.892292	1.60	1.5968	01-01-17
166	60-06-01	Kritha Phothirak	A	T.plaipraya	A.Plaipraya	Krabi	8.546132	98.847879	9.03	8.9920	01-01-17
197	60-06-02	Chiraphen Thapthimthet	A	T.plaipraya	A.Plaipraya	Krabi	8.528204	98.796933	3.60	3.6016	01-01-17
	60-06-02	Chiraphen Thapthimthet	B	T.plaipraya	A.Plaipraya	Krabi	8.568033	98.865643	2.44	2.4368	01-01-17
	60-06-02	Chiraphen Thapthimthet	C	T.plaipraya	A.Plaipraya	Krabi	8.528938	98.838856	2.71	2.7104	01-01-17
198	60-06-04	Nanthayuts Kongkaew	A	T.plaipraya	A.Plaipraya	Krabi	8.545237	98.845638	3.57	3.5744	01-01-17
199	60-06-05	Manoon Sinsuwan	A	T.plaipraya	A.Plaipraya	Krabi	8.519492	98.849411	2.40	2.3952	01-01-17



**BUREAU
VERITAS**

No.	Member's ID	Smallholder's Name	Plot No.	Location			GPS Coordinate		Total Land Title Area (Ha)	Oil Palm Planted Area (Ha)	Date Joining
				Sub-District	District	Province	Latitude	Longitude			
	60-06-05	Manoon Sinsuwan	B	T.plaipraya	A.Plaipraya	Krabi	8.477385	98.881517	7.36	7.3600	01-01-17
200	60-06-06	Rampa Silaloes	A	T.plaipraya	A.Plaipraya	Krabi	8.560918	98.888201	4.67	4.5120	01-01-17
201	60-06-07	Wisut Kinkaew	A	T.plaipraya	A.Plaipraya	Krabi	8.54903	98.86022	2.53	2.5344	01-01-17
	60-06-07	Wisut Kinkaew	B	T.plaipraya	A.Plaipraya	Krabi	8.540756	98.857147	4.16	4.0848	01-01-17
202	60-06-08	Sathin Phomrasa	A	T.plaipraya	A.Plaipraya	Krabi	8.55066	98.870931	1.24	1.2368	01-01-17
	60-06-08	Sathin Phomrasa	B	T.plaipraya	A.Plaipraya	Krabi	8.552514	98.868837	2.89	2.8944	01-01-17
203	60-06-09	Somchai Buawari	A	T.plaipraya	A.Plaipraya	Krabi	8.561526	98.863585	4.66	4.6640	01-01-17
	60-06-09	Somchai Buawari	B	T.plaipraya	A.Plaipraya	Krabi	8.580025	98.866941	5.19	5.1872	01-01-17
204	60-06-10	Saowelak Phothirak	A	T.plaipraya	A.Plaipraya	Krabi	8.544499	98.843614	5.32	4.5200	01-01-17
205	61-01-01	Chaloem Sapsaeng	A	T.plaipraya	A.Plaipraya	Krabi	8.57648	98.895087	1.80	1.3168	01-01-18
	61-01-01	Chaloem Sapsaeng	B	T.plaipraya	A.Plaipraya	Krabi	8.576284	98.891861	1.84	1.8448	01-01-18
	61-01-01	Chaloem Sapsaeng	C	T.plaipraya	A.Plaipraya	Krabi	8.576673	98.899792	1.69	1.6880	01-01-18
206	61-01-03	Prasan Bunrak	A	T.Bangsawan	A.Prasaeng	Suratthani	8.603019	98.918317	4.67	4.1936	01-01-18



**BUREAU
VERITAS**

No.	Member's ID	Smallholder's Name	Plot No.	Location			GPS Coordinate		Total Land Title Area (Ha)	Oil Palm Planted Area (Ha)	Date Joining
				Sub-District	District	Province	Latitude	Longitude			
	61-01-03	Prasan Bunrak	B	T.Bangsawan	A.Prasaeng	Suratthani	8.604371	98.919778	1.22	1.2240	01-01-18
	61-01-03	Prasan Bunrak	C	T.Bangsawan	A.Prasaeng	Suratthani	8.605731	98.916975	0.86	0.7760	01-01-18
207	61-01-04	Ratree Kliangkamon	A	T.plaipraya	A.Plaipraya	Krabi	8.586463	98.90624	1.89	1.8944	01-01-18
	61-01-04	Ratree Kliangkamon	B	T.plaipraya	A.Plaipraya	Krabi	8.58525	98.905762	0.44	0.4368	01-01-18
208	61-01-05	Sarawut Nuson	A	T.plaipraya	A.Plaipraya	Krabi	8.566274	98.922799	0.99	0.9072	01-01-18
209	61-02-01	Duangchai Phunsong	A	T.plaipraya	A.Plaipraya	Krabi	8.650359	98.894176	1.84	1.7600	01-01-18
210	61-02-02	Ritthichai Phetlem	A	T.plaipraya	A.Plaipraya	Krabi	8.610423	98.857666	4.56	4.5600	01-01-18
211	61-02-04	Somsak Nokkaew	A	T.plaipraya	A.Plaipraya	Krabi	8.606317	98.884219	1.86	1.8640	01-01-18
212	61-05-01	Kotchaphon Hyunun	A	T.plaipraya	A.Plaipraya	Krabi	8.587899	98.898894	1.47	1.4736	01-01-18
213	61-06-01	Jaran Puangsa-ard	A	T.plaipraya	A.Plaipraya	Krabi	8.503167	98.853956	2.56	2.5648	01-01-18
	61-06-01	Jaran Puangsa-ard	B	T.plaipraya	A.Plaipraya	Krabi	8.487695	98.894302	1.87	1.8736	01-01-18
	61-06-01	Jaran Puangsa-ard	C	T.plaipraya	A.Plaipraya	Krabi	8.489011	98.891752	4.32	4.3200	01-01-18
	61-06-01	Jaran Puangsa-ard	D	T.plaipraya	A.Plaipraya	Krabi	8.495202	98.882596	0.59	0.5936	01-01-18



**BUREAU
VERITAS**

No.	Member's ID	Smallholder's Name	Plot No.	Location			GPS Coordinate		Total Land Title Area (Ha)	Oil Palm Planted Area (Ha)	Date Joining
				Sub-District	District	Province	Latitude	Longitude			
	61-06-01	Jaran Puangsa-ard	E	T.plaipraya	A.Plaipraya	Krabi	8.60597	98.848624	3.69	3.6928	01-01-18
214	61-07-01	Keattiya Phatphan	A	T.Khao-Yai	A.Ao-luk	Krabi	8.453946	98.730167	1.48	1.4848	01-01-18
	61-07-01	Keattiya Phatphan	B	T.Khao-Yai	A.Ao-luk	Krabi	8.487761	98.701139	1.29	1.2864	01-01-18
	61-07-01	Keattiya Phatphan	C	T.Khao-Yai	A.Ao-luk	Krabi	8.504689	98.703121	1.65	1.6464	01-01-18
	61-07-01	Keattiya Phatphan	D	T.Khao-Yai	A.Ao-luk	Krabi	8.465872	98.749724	1.89	1.8896	01-01-18
	61-07-01	Keattiya Phatphan	E	T.Khao-Yai	A.Ao-luk	Krabi	8.459601	98.728789	2.27	2.2704	01-01-18
215	61-07-02	Chakkaphong Saekuaa	A	T.Ao-lukTai	A.Ao-luk	Krabi	8.374226	98.768188	5.04	5.0400	01-01-18
216	61-07-03	Jaruek Kosapong	A	T.Ao-lukTai	A.Ao-luk	Krabi	8.456172	98.810153	6.24	6.2432	01-01-18
217	61-07-04	Praphat Thongchoem	A	T.Ao-lukTai	A.Ao-luk	Krabi	8.350138	98.79882	2.92	2.9200	01-01-18
218	61-07-05	Watsana Sonkaeo	A	T.Khao-Yai	A.Ao-luk	Krabi	8.451096	98.706908	3.84	3.8416	01-01-18
	61-07-05	Watsana Sonkaeo	B	T.Khao-Yai	A.Ao-luk	Krabi	8.457575	98.707123	1.12	1.1168	01-01-18
219	61-07-06	Somprasong Wongmueang	A (A+B)	T.Ao-lukTai	A.Ao-luk	Krabi	8.406595	98.724702	2.00	2.0048	01-01-18
	61-07-06	Somprasong Wongmueang	C	T.Ao-lukTai	A.Ao-luk	Krabi	8.406844	98.725671	2.51	2.5072	01-01-18



**BUREAU
VERITAS**

No.	Member's ID	Smallholder's Name	Plot No.	Location			GPS Coordinate		Total Land Title Area (Ha)	Oil Palm Planted Area (Ha)	Date Joining
				Sub-District	District	Province	Latitude	Longitude			
220	61-07-07	Onanong Khrusanit	A	T.Ao-lukTai	A.Ao-luk	Krabi	8.351101	98.654556	8.00	8.0000	01-01-18
221	61-07-08	Arphon Phonain	A	T.Ao-lukTai	A.Ao-luk	Krabi	8.393226	98.762309	2.32	2.3200	01-01-18
222	62-01-01	Montree Kaithip	A	T.plaipraya	A.Plaipraya	Krabi	8.624623	98.930362	5.25	5.2496	01-01-19
223	62-01-02	Saichai Na Songkhram	A	T.plaipraya	A.Plaipraya	Krabi	8.649144	98.904018	0.94	0.9376	01-01-19
224	62-02-03	Kimlan Nongkhal	A	T.plaipraya	A.Plaipraya	Krabi	8.575536	98.896882	4.15	1.7456	01-01-19
225	62-02-04	Tawat Kleangkamon	A	T.plaipraya	A.Plaipraya	Krabi	8.572991	98.892937	1.65	1.0144	01-01-19
	62-02-04	Tawat Kleangkamon	B	T.plaipraya	A.Plaipraya	Krabi	8.573402	98.894336	0.97	0.9696	01-01-19
	62-02-04	Tawat Kleangkamon	C	T.plaipraya	A.Plaipraya	Krabi	8.586531	98.908595	0.90	0.9008	01-01-19
	62-02-04	Tawat Kleangkamon	D	T.plaipraya	A.Plaipraya	Krabi	8.586678	98.893962	0.91	0.9056	01-01-19
	62-02-04	Tawat Kleangkamon	E	T.plaipraya	A.Plaipraya	Krabi	8.587752	98.907406	1.92	1.9200	01-01-19
226	62-02-05	Barnrung Kiangkamon	A	T.plaipraya	A.Plaipraya	Krabi	8.569019	98.910667	2.45	1.8144	01-01-19
227	62-02-06	Phichai Khiaosawat	A	T.plaipraya	A.Plaipraya	Krabi	8.575717	98.89827	0.88	0.8800	01-01-19
228	62-03-07	Sasithorn Burinkook	A	T.Makham-Tia	Mueang	SuratThani	8.550267	98.90072	6.30	6.3008	01-01-19



**BUREAU
VERITAS**

No.	Member's ID	Smallholder's Name	Plot No.	Location			GPS Coordinate		Total Land Title Area (Ha)	Oil Palm Planted Area (Ha)	Date Joining
				Sub-District	District	Province	Latitude	Longitude			
229	62-06-08	Yuri Winwat	A	T.plaipraya	A.Plaipraya	Krabi	8.569286	98.879463	1.67	1.6656	01-01-19
230	62-06-09	Suthip Phlaichana	A	T.plaipraya	A.Plaipraya	Krabi	8.569745	98.88051	2.81	1.6912	01-01-19
	62-06-09	Suthip Phlaichana	B	T.plaipraya	A.Plaipraya	Krabi	8.588368	98.868658	1.84	1.8368	01-01-19
	62-06-09	Suthip Phlaichana	C	T.plaipraya	A.Plaipraya	Krabi	8.586238	98.86671	0.80	0.8000	01-01-19
231	62-06-10	Suphap Phiaichana	A	T.plaipraya	A.Plaipraya	Krabi	8.567623	98.882356	3.77	3.7680	01-01-19
	62-06-10	Suphap Phiaichana	B	T.plaipraya	A.Plaipraya	Krabi	8.588483	98.85882	1.24	1.2384	01-01-19
	62-06-10	Suphap Phiaichana	C	T.plaipraya	A.Plaipraya	Krabi	8.606174	98.858062	1.56	1.5600	01-01-19
232	63-01-01	Sonchai Thipkonglat	A	T.plaipraya	A.Plaipraya	Krabi	8.646089	98.906711	1.95	1.9500	06-03-21
233	63-04-02	Nidriya Nuannoon	A	T.plaipraya	A.Plaipraya	Krabi	8.545828	98.905494	1.52	1.5200	06-03-21
234	63-04-04	Peerasak Nuannoon	A	T.plaipraya	A.Plaipraya	Krabi	8.545455	98.906082	1.80	1.8000	06-03-21
235	63-05-06	Anong Chudecha	A	T.plaipraya	A.Plaipraya	Krabi	8.580253	98.904168	1.59	1.5900	06-03-21
236	63-06-05	Suvit Kumannoi	A	T.plaipraya	A.Plaipraya	Krabi	8.47489	98.893407	3.12	3.1200	06-03-21
	63-06-05	Suvit Kumannoi	B	T.plaipraya	A.Plaipraya	Krabi	8.477011	98.89713	1.54	1.5400	06-03-21
237	63-06-07	Aritsara Nuannun	A	T.plaipraya	A.Plaipraya	Krabi	8.577371	98.881179	3.34	3.3400	06-03-21
238	63-06-08	Thawi Nuannun	A	T.plaipraya	A.Plaipraya	Krabi	8.579315	98.880879	5.44	5.4400	06-03-21
239	63-06-09	Tanom Kaeodee	A	T.plaipraya	A.Plaipraya	Krabi	8.553147	98.867754	1.21	1.2100	06-03-21
	63-06-09	Tanom Kaeodee	B	T.plaipraya	A.Plaipraya	Krabi	8.58502	98.883476	3.48	3.4800	06-03-21
	63-06-09	Tanom Kaeodee	C	T.plaipraya	A.Plaipraya	Krabi	8.587503	98.889976	2.32	2.3200	06-03-21



**BUREAU
VERITAS**

No.	Member's ID	Smallholder's Name	Plot No.	Location			GPS Coordinate		Total Land Title Area (Ha)	Oil Palm Planted Area (Ha)	Date Joining
				Sub-District	District	Province	Latitude	Longitude			
240	63-06-10	Amonrat PanuWong	A	T.plaipraya	A.Plaipraya	Krabi	8.560142	98.883953	2.75	2.7500	06-03-21
	63-06-10	Amonrat PanuWong	B	T.plaipraya	A.Plaipraya	Krabi	8.572785	98.886368	1.77	1.7700	06-03-21
	63-06-10	Amonrat PanuWong	C	T.plaipraya	A.Plaipraya	Krabi	8.530466	98.808349	0.95	0.9500	06-03-21
	63-06-10	Amonrat PanuWong	D	T.plaipraya	A.Plaipraya	Krabi	8.547366	98.807905	1.35	1.3500	06-03-21