



### Bureau Veritas Certification (M) Sdn Bhd

Lot 19.01 & 19.02, 19th Floor,  
Menara KH, Jalan Sultan Ismail  
50250 Kuala Lumpur,  
Malaysia

Date of Notification: **25<sup>th</sup> June 2022**

Dear Interested Parties,

Public Notification: RSPO RISS Re-Certification (Milestone B) of Thappitak Community Enterprise Group (RSPO Membership: 1-0222-16-000-00)

Bureau Veritas Certification (M) Sdn Bhd. has been appointed by Thappitak Community Enterprise Group, with RSPO membership number 1-0222-16-000-00 to perform an RSPO RISS Re-Certification (Milestone B) at Thappitak Community Enterprise Group, located at 99 Village no.3 Sub-district Kalasae District Sikao Province Trang Province, Thailand. The audit will be conducted from 1-5 August 2022 against the requirements of:

- RSPO Independent Smallholder Standard 2019, using Supply Chain Model Identity Preserved (IP)

RSPO PO ID number of the Group is: RSPO\_PO1000006798

### Independent Smallholder background

They are a group of oil palm farmer located at 99 Village no.3 Sub-district Kalasae District Sikao Province Trang Province, Thailand. They are interested to produce sustainable palm oil under the RSPO standard.

Information of the production data to be assessed on the Group Manager and ISH members are as follows:

#### 1. Group Manager information

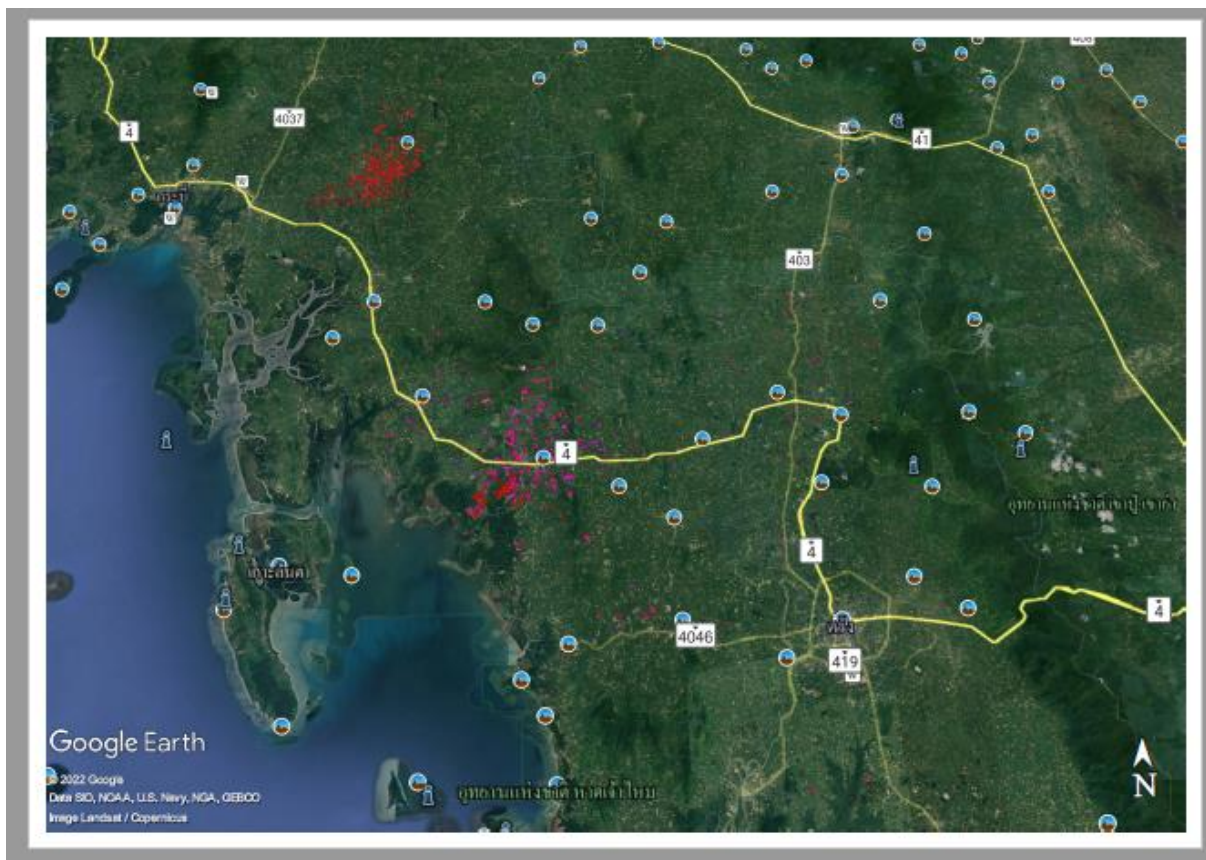
Name of Group Manager	Location	GPS Reference		No. of Smallholders	Area summary		Projected FFB Production (MT/year)
		Latitude	Longitude		Total Titles (Ha)	*Planted Area (Ha)	
Thappitak Community Enterprise Group	99 Village no.3 Sub-district Kalasae District Sikao Province Trang Province, Thailand	99.31022 E	7.74293 N	692	5,065.38	4,535.81	130,404

## 2. Independent Smallholders information (to refer Annex 1)

Number of farmers / members	Location	GPS Reference		Area Summary (Ha)	Any Liabilities?
		Latitude	Longitude	Certified / Planted Area	
692	Refer to Annex 1	Refer to Annex 1	Refer to Annex 1	5,065.38 / 4,535.81	The report is aimed at analyzing the land use change and establishing the compensation liability for Thappitak Community Enterprise Group. 202 separate landholdings with non-compliant land clearing are required for compensation liability analysis. Total area of all separate landholding with non-compliant land clearing is 517.45 ha. The raw NCLC is 403.68 ha and the FCL is 17.32 ha and A smallholder area was planted with oil palm within riparian zone buffer. Total area needs to be remediated is 0.611 ha.

\* Based on Smallholder Land Use Change Analysis (LUCA) for Thappitak Community Enterprise Group, Prepared on 28<sup>th</sup> March 2022.

### 3. Location Map of the ISH Group



To indicate whether any of the estates in the management unit is undergoing the RaCP (Remediation and Compensation Procedure) process. If yes, to indicate the status. This information can be gained via the RaCP Tracker (<https://www.rspo.org/certification/remediation-and-compensation/racp-tracker>). Any enquiries in regards to liability shall be made directly to RSP0.

#### Assessment Team

Bureau Veritas Certification (M) Sdn Bhd is member of the Bureau Veritas, a global leader in Testing, Inspection and Certification (TIC), delivering high quality services to help clients meet the growing challenges of quality, safety, environmental protection and social responsibility. Established in 1828, Bureau Veritas has over 190 years of experience in providing various types of certifications and recognized and accredited by major national and international organizations.

The assessors assigned for this Re-Certification assessment will involve a team of auditors as follows:

- **Mrs. Chongrak Takard:** She will be in charge as lead auditor and responsible for auditing against RSP0 standard RSP0 P&C, HCV, regulatory, good agricultural practice, Integrated Pest Management, pesticide and fertilizer use, ecological and environmental as well as social aspect in plantation.
- **Mr Supiwat Nentakong (Environmental, health & safety):** He will be involved with



auditing of good agricultural practice, Integrated Pest Management, pesticide and fertilizer use, environmental management, regulatory, health and safety, and worker welfare and social issues in mill and plantation.

- **Mr. Niyom Sanmano (Legal/Laws):** He will be involved with auditing of good agricultural practice, Integrated Pest Management, pesticide and fertilizer use, environmental management, regulatory, health and safety, and worker welfare and social issues in mill and plantation.
- **Mr. Wilit Muensroy (Social):** He will be involved with auditing of good agricultural practice, Integrated Pest Management, pesticide and fertilizer use, environmental management, regulatory, health and safety, and worker welfare and social issues in mill and plantation.

#### **Invitation of all stakeholders:**

Interested stakeholders are invited to provide comments or inputs regarding the following issues related to performance of the company and compliance of the company's with RSPO certification requirements.

- Ecological and environmental conservation
- Land acquisition process and/or land disputes
- Opportunity for employment, wage, overtime and piece wage
- Provision of housing, sanitation, amenities and educational support
- Community approach and community development
- Other issues pertaining to RSPO

Your comments or observations can be communicated through either a meeting with assessment team during the field audit or writing/email to BVC (see contact details below). Contact details for BVC and the auditee's representatives are as follow:

#### **Bureau Veritas Certification**

Mrs. Chongrak Takard  
Bureau Veritas Certification (Thailand)  
Limited  
16th Floor, Bangkok Tower, 2170 New  
Petchburi Road, Bangkok, Huaykwang,  
Bangkok, 10310 Thailand  
Tel: +66 2670 4800  
Fax: +66 2 718 1941  
Email: chongrak.takard@bureauveritas.com

#### **Thappitak Community Enterprise Group Representative**

Mr. Virayute Wirotwannakul and Miss Parichat  
Putthanuan / Group Manager  
99 Village no.3 Sub-district Kalasae District Sikao  
Province Trang Province, Thailand  
Tel: +66 91-1592828, +66 86-4441684  
Fax : +66 75-820168  
Email: virayute.w@pto.co.th and  
pparichat.p@pto.co.th

BVC appreciates comments received within 30 days from the date of this notification letter. Comments and inputs will be considered during the assessment. All received information will be kept confidential and only serves for BVC and RSPO. We thank you for your comments and feedbacks.

Yours sincerely,

#### **Bureau Veritas Certification (M) Sdn Bhd**

Lots 19.01 & 19.02, 19th Floor, Menara KH, Jalan Sultan Ismail, 50250 Kuala Lumpur, Malaysia  
Tel: +603 2733 7700 Fax: +603-2733 7701 Website: www.bureauveritas.com



**Mr. Muhamad Iqbal bin Jailan**

Technical Lead – RSPO P&C



Annex 1: List of Independent Smallholder for Thappitak Community Enterprise Group

No.	Member's ID	Smallholder's Name	Plot No.	Date Joining	GPS Coordinate		Location			Total Land Title Area (Ha)	Oil Palm Planted Area (Ha)
					Latitude	Longitude	Sub-District	District	Province		
1	PTO-57-01	MANICH ANTENG	Block A	18-05-15	7.76632	99.29915	Kalase	Si kao	Trang	4.95	2.91
2	PTO-57-02	PARADORN TOKJEENTONG	Block A	18-05-15	7.64746	99.30611	Khao mai kaeo	Si kao	Trang	2.04	2.04
3	PTO-57-04	NIRAN JANKET	Block A	18-05-15	7.71204	99.29994	Sai khao	Khlong Thom	Krabi	1.57	1.57
			Block B		7.71011	99.29924	Sai khao	Khlong Thom	Krabi	3.59	1.60
			Block C		7.71246	99.30510	Sai khao	Khlong Thom	Krabi	1.79	1.79
4	PTO-57-05	NONG BUNSRI	Block A	18-05-15	7.74267	99.32324	Kalase	Si kao	Trang	3.33	3.33
5	PTO-57-06	NITTAYA CHUAYKERD	Block A	18-05-15	7.71769	99.29745	Sai khao	Khlong Thom	Krabi	1.70	1.44
6	PTO-57-07	SUCHADA KONGJARERN	Block A	18-05-15	7.80411	99.31733	Kalase	Si kao	Trang	3.65	3.45
7	PTO-57-08	PRACHUAB CEIWHENG	Block A	18-05-15	7.71625	99.32212	Kalase	Si kao	Trang	0.57	0.57
			Block B		7.75785	99.29699	Kalase	Si kao	Trang	1.45	1.45
			Block C		7.76486	99.29123	Kalase	Si kao	Trang	1.60	1.60
			Block D		7.79861	99.29970	Kalase	Si kao	Trang	2.24	1.60
8	PTO-57-09	CHETHANAT PATHANATHONG	Block A	18-05-15	7.68846	99.26826	Sai khao	Khlong Thom	Krabi	3.52	3.52
			Block B		7.68751	99.26634	Sai khao	Khlong Thom	Krabi	3.72	1.96
			Block C		7.68844	99.26915	Sai khao	Khlong Thom	Krabi	3.00	3.00



**BUREAU  
VERITAS**

9	PTO-57-10	SOMMUT SANGKAEW	Block A	18-05-15	7.74915	99.31210	Kalase	Si kao	Trang	3.01	0.80
			Block B		7.75711	99.29762	Kalase	Si kao	Trang	1.91	1.60
			Block D		7.76244	99.30097	Kalase	Si kao	Trang	3.24	3.08
			Block E		7.74016	99.30169	Sai khao	Khlong Thom	Krabi	3.84	3.84
10	PTO-57-11	SIRIWAN LONGTHEE	Block A	18-05-15	7.69950	99.30902	Kalase	Si kao	Trang	4.00	4.00
			Block B		7.70050	99.31092	Kalase	Si kao	Trang	1.66	1.66
			Block C		7.69849	99.30980	Kalase	Si kao	Trang	0.53	0.53
11	PTO-57-12	KASEM GLEUAMEEPON	Block A	18-05-15	7.76567	99.31804	Kalase	Si kao	Trang	2.08	1.28
			Block B		7.76196	99.32254	Kalase	Si kao	Trang	1.76	1.76
			Block C		7.75246	99.32038	Kalase	Si kao	Trang	1.22	1.12
			Block D		7.76991	99.31827	Kalase	Si kao	Trang	0.47	0.47
12	PTO-57-13	SAMNAO THONGKAMDEE	Block A	18-05-15	7.74299	99.30367	Kalase	Si kao	Trang	3.06	3.06
			Block B		7.87355	99.21224	Khlong Thom Nuea	Khlong Thom	Krabi	7.60	7.60
			Block C		7.89479	99.21950	Khlong Thom Nuea	Khlong Thom	Krabi	3.68	3.68
			Block D		7.89127	99.21924	Khlong Thom Nuea	Khlong Thom	Krabi	3.52	3.52
13	PTO-57-14	SANE PLOYSRI	Block A	18-05-15	7.76505	99.29798	Kalase	Si kao	Trang	6.31	6.31
14	PTO-57-16	PANISORN BUAKAM	Block A	18-05-15	7.75209	99.30202	Kalase	Si kao	Trang	5.27	5.27
			Block B		7.74237	99.30256	Kalase	Si kao	Trang	0.88	0.88
			Block C		7.74133	99.303704	Kalase	Si kao	Trang	5.37	5.37



**BUREAU  
VERITAS**

			Block D		7.74858	99.30257	Kalase	Si kao	Trang	15.83	9.11
15	PTO-57-17	PANOMSIT NUANPARN	Block A	18-05-15	7.74385	99.33057	Kalase	Si kao	Trang	3.43	2.00
			Block B		7.74617	99.33370	Kalase	Si kao	Trang	1.66	1.66
16	PTO-57-18	WATTANA PANITKUL	Block A	18-05-15	7.57126	99.43075	Na Mueang Phet	Si kao	Trang	15.36	12.00
			Block B		7.57829	99.43576	Na Mueang Phet	Si kao	Trang	70.26	24.00
17	PTO-57-19	PRASIT CHUMKONG	Block A	18-05-15	7.76334	99.33975	Kalase	Si kao	Trang	3.28	3.28
			Block B		7.82809	99.33542	Ao Tong	Wang Wiset	Trang	11.08	1.60
18	PTO-57-21	SUTIN SUKGRAITHAI	Block A	18-05-15	7.70878	99.33762	Kalase	Si kao	Trang	1.25	1.24
			Block B		7.71087	99.32363	Kalase	Si kao	Trang	1.26	1.26
19	PTO-57-22	SUCHET THEEHOR	Block A	18-05-15	7.83214	99.33147	Ao Tong	Wang Wiset	Trang	11.40	11.40
20	PTO-57-23	CHAPRADIT KAMSEN	Block A	18-05-15	7.75096	99.33163	Kalase	Si kao	Trang	0.77	0.77
			Block B		7.75245	99.33203	Kalase	Si kao	Trang	1.20	1.20
			Block C		7.75629	99.33504	Kalase	Si kao	Trang	1.40	1.40
			Block D		7.79969	99.32617	Kalase	Si kao	Trang	5.64	5.64
			Block E		7.72743	99.33438	Kalase	Si kao	Trang	2.38	2.38
			Block F		7.63315	99.31030	Khao mai kaoo	Si kao	Trang	2.40	2.40
			Block G		7.84458	99.31310	Ao Tong	Wang Wiset	Trang	2.56	2.56
21	PTO-57-24	SAWAI MEEKAEW	Block A	18-05-15	7.78838	99.34020	Kalase	Si kao	Trang	7.20	7.20
22	PTO-57-25	WONG PONRIT	Block A	18-05-15	7.77272	99.30654	Kalase	Si kao	Trang	2.88	2.88





**BUREAU  
VERITAS**

			Block B		7.72967	99.31667	Kalase	Si kao	Trang	2.73	2.57
23	PTO-57-26	JONGJET THANGKAM	Block A	18-05-15	7.65384	99.37185	Wang Maprang	Wang Wiset	Trang	14.68	7.84
			Block B		7.65301	99.37477	Wang Maprang	Wang Wiset	Trang	15.84	14.40
			Block C		7.64986	99.37707	Wang Maprang	Wang Wiset	Trang	5.72	5.44
			Block D		7.60284	99.41441	Khao Wiset	Wang Wiset	Trang	2.28	2.28
			Block E		7.60226	99.41655	Khao Wiset	Wang Wiset	Trang	3.24	3.24
24	PTO-57-27	WIPORNWAN NUIBUNKAEW	Block A	18-05-15	7.83808	99.31244	Ao Tong	Wang Wiset	Trang	1.97	1.97
25	PTO-57-28	SURACHAI RODSEN	Block A	18-05-15	7.84807	99.32844	Ao Tong	Wang Wiset	Trang	3.20	3.20
			Block B		7.82348	99.33723	Ao Tong	Wang Wiset	Trang	2.21	2.21
			Block C		7.82318	99.33885	Ao Tong	Wang Wiset	Trang	1.44	1.44
26	PTO-57-29	YOUN PHOTHAWON	Block A	18-05-15	7.72634	99.31040	Kalase	Si kao	Trang	4.40	4.40
			Block B		7.78286	99.31698	Kalase	Si kao	Trang	2.08	2.08
27	PTO-57-30	SITTIPORN POOTPROR	Block A	18-05-15	7.70257	99.35786	Wang Maprang Nuea	Wang Wiset	Trang	9.56	6.56
28	PTO-57-31	PRASIT KITTIKUN	Block A	18-05-15	7.75960	99.41668	Wang Maprang Nuea	Wang Wiset	Trang	2.40	2.40
			Block B		7.74126	99.41391	Wang Maprang Nuea	Wang Wiset	Trang	0.63	0.48



**BUREAU  
VERITAS**

			Block C		7.75883	99.41579	Wang Maprang Nuea	Wang Wiset	Trang	0.65	0.33
			Block D		7.76395	99.42341	Wang Maprang Nuea	Wang Wiset	Trang	1.23	1.23
			Block E		7.74382	99.43384	Wang Maprang Nuea	Wang Wiset	Trang	2.56	2.56
29	PTO-57-32	RABIAB ANTENG	Block A	18-05-15	7.72551	99.32539	Kalase	Si kao	Trang	8.41	6.40
30	PTO-57-33	KIATMONGKOL POOTPROR	Block A	18-05-15	7.75108	99.31318	Kalase	Si kao	Trang	6.21	6.21
31	PTO-57-34	SOMSONG WARNTONG	Block A	18-05-15	7.73275	99.31307	Kalase	Si kao	Trang	1.60	1.60
32	PTO-57-35	PHANNALAK LONGTHEE	Block A	18-05-15	7.72570	99.30701	Sai khao	Khlong Thom	Krabi	3.41	3.41
			Block B		7.72003	99.30645	Sai khao	Khlong Thom	Krabi	3.74	3.74
33	PTO-57-36	MANIT SONGNOO	Block A	18-05-15	7.71531	99.29735	Sai khao	Khlong Thom	Krabi	4.26	2.56
			Block B		7.71498	99.29998	Sai khao	Khlong Thom	Krabi	2.18	1.76
34	PTO-57-37	JARUWAN SATIDYANGKUL	Block A	18-05-15	7.76067	99.33412	Kalase	Si kao	Trang	4.68	4.60
35	PTO-57-38	SUWIT PENGDAM	Block A	18-05-15	7.80512	99.33583	Kalase	Si kao	Trang	0.88	0.80
			Block B		7.80604	99.32902	Kalase	Si kao	Trang	4.88	4.88
			Block C		7.81441	99.33040	Kalase	Si kao	Trang	5.27	3.66
36	PTO-57-39	SAEREE SRITAMMARAT	Block A	18-05-15	7.73913	99.34101	Kalase	Si kao	Trang	9.09	8.61
37	PTO-57-40	WANNA SUJITRAPORN	Block A	18-05-15	7.77381	99.29998	Kalase	Si kao	Trang	1.59	1.59



**BUREAU  
VERITAS**

			Block B		7.79689	99.31873	Kalase	Si kao	Trang	3.77	3.77
38	PTO-57-41	CHALIAO GLEUAMEEPON	Block A	18-05-15	7.81104	99.32129	Kalase	Si kao	Trang	1.74	1.74
			Block B		7.76990	99.30026	Kalase	Si kao	Trang	0.94	0.94
39	PTO-57-42	WISUT SUDHARN	Block A	18-05-15	7.70536	99.29508	Sai khao	Khlong Thom	Krabi	4.31	4.31
			Block B		7.68779	99.45377	Khao Wiset	Wang Wiset	Trang	1.55	1.55
40	PTO-57-43	CHATCHADAPORN BUNRONG	Block A	18-05-15	7.72718	99.30918	Sai khao	Khlong Thom	Krabi	2.74	1.60
			Block B		7.72748	99.31539	Kalase	Si kao	Trang	4.02	4.02
41	PTO-57-44	TAWEE BUNPHA	Block A	18-05-15	7.75307	99.34293	Kalase	Si kao	Trang	8.00	8.00
42	PTO-57-45	PREECHA PAIMANEE	Block A	18-05-15	7.81367	99.31655	Kalase	Si kao	Trang	1.22	1.22
			Block B		7.80943	99.31003	Kalase	Si kao	Trang	2.40	2.40
43	PTO-57-46	SANTI DAMPIN	Block A	18-05-15	7.77019	99.31775	Kalase	Si kao	Trang	1.34	1.34
44	PTO-57-47	SAHNONG SAENSUK	Block A	18-05-15	7.72120	99.34042	Kalase	Si kao	Trang	1.16	1.16
			Block B		7.64634	99.33170	Khao mai kao	Si kao	Trang	1.73	1.73
			Block C		7.75032	99.33825	Kalase	Si kao	Trang	2.44	2.44
45	PTO-57-48	CHIRASAK CHAITHONG	Block A	18-05-15	7.68461	99.25977	Sai khao	Khlong Thom	Krabi	7.20	7.20
			Block B		7.68328	99.26171	Sai khao	Khlong Thom	Krabi	6.40	6.40
			Block C		7.68455	99.26247	Sai khao	Khlong Thom	Krabi	7.20	4.00
46	PTO-57-49	NICHOT KAEWJANTHONG	Block A	18-05-15	7.75752	99.36654	Wang Maprang Nuea	Wang Wiset	Trang	2.33	2.33



**BUREAU  
VERITAS**

			Block B		7.78665	99.36699	Wang Maprang Nuea	Wang Wiset	Trang	1.99	0.67
			Block C		7.75670	99.36796	Wang Maprang Nuea	Wang Wiset	Trang	0.56	0.56
			Block D		7.74781	99.37626	Wang Maprang Nuea	Wang Wiset	Trang	3.20	3.20
			Block E		7.79263	99.36364	Wang Maprang Nuea	Wang Wiset	Trang	0.40	0.40
			Block F		7.75789	99.37638	Wang Maprang Nuea	Wang Wiset	Trang	5.22	3.76
47	PTO-57-50	SOMPORN GERTKAIKAEW	Block A	18-05-15	7.76862	99.29861	Kalase	Si kao	Trang	5.62	4.48
48	PTO-57-51	SANTIPHAP NILRATA	Block A	18-05-15	7.72100	99.36003	wang Maprang Nuea	Wang Wiset	Trang	4.91	4.80
			Block B		7.72610	99.34888	wang Maprang Nuea	Wang Wiset	Trang	4.76	4.76
49	PTO-57-52	HUANG WARNTONG	Block A	18-05-15	7.83389	99.33653	Ao Tong	Wang Wiset	Trang	16.00	9.60
50	PTO-57-53	THAMWIWAT RAKSAJIT	Block A	18-05-15	7.71952	99.32194	Kalase	Si kao	Trang	2.33	2.32
			Block B		7.74088	99.29193	Sai khao	Khlong Thom	Krabi	2.40	2.00
51	PTO-57-54	JIT SAEWHONG	Block A	18-05-15	7.73798	99.33390	Kalase	Si kao	Trang	3.22	2.74



**BUREAU  
VERITAS**

			Block B		7.71018	99.29780	Sai khao	Khlong Thom	Krabi	5.41	5.41
52	PTO-57-55	SAOWAPA GERTKAICAEW	Block A	18-05-15	7.71058	99.34013	Kalase	Si kao	Trang	8.49	4.96
53	PTO-57-56	PREECHA SONGNOO	Block A	18-05-15	7.76090	99.37130	Wang Maprang Nuea	Wang Wiset	Trang	1.88	1.88
			Block B		7.78636	99.36454	Wang Maprang Nuea	Wang Wiset	Trang	1.96	1.96
			Block C		7.76029	99.36781	Wang Maprang Nuea	Wang Wiset	Trang	6.00	4.04
54	PTO-57-57	NAPHASORN NANON	Block A	18-05-15	7.78240	99.33754	Kalase	Si kao	Trang	1.83	1.83
			Block B		7.73974	99.30770	Kalase	Si kao	Trang	1.27	1.27
			Block C		7.83081	99.32281	Ao Tong	Wang Wiset	Trang	8.00	8.00
55	PTO-57-58	SUCHIN SONGSANG	Block A	18-05-15	7.72303	99.33079	Kalase	Si kao	Trang	1.28	1.28
			Block B		7.72368	99.33008	Kalase	Si kao	Trang	1.37	1.29
			Block C		7.74682	99.30241	Kalase	Si kao	Trang	2.57	2.57
			Block D		7.74608	99.30043	Kalase	Si kao	Trang	10.32	6.48
56	PTO-57-59	ADISA NUANPRANG	Block A	18-05-15	7.75728	99.29563	Kalase	Si kao	Trang	0.89	0.89
			Block B		7.75873	99.29534	Kalase	Si kao	Trang	1.19	1.19
			Block C		7.76052	99.29935	Kalase	Si kao	Trang	0.97	0.97
			Block D		7.77036	99.29469	Kalase	Si kao	Trang	1.80	1.80



**BUREAU  
VERITAS**

57	PTO-57-60	SAWHANG CHAIKAEW	Block A	18-05-15	7.72410	99.28290	Sai khao	Khlong Thom	Krabi	3.00	3.00
			Block B		7.72511	99.28172	Sai khao	Khlong Thom	Krabi	2.72	2.72
			Block C		7.72577	99.28446	Sai khao	Khlong Thom	Krabi	0.73	0.73
			Block D		7.74037	99.28821	Sai khao	Khlong Thom	Krabi	0.81	0.65
			Block E		7.73945	99.28774	Sai khao	Khlong Thom	Krabi	0.81	0.81
			Block G		7.73815	99.28479	Sai khao	Khlong Thom	Krabi	2.84	2.84
			Block H		7.72427	99.28597	Sai khao	Khlong Thom	Krabi	0.56	0.56
			Block I		7.72423	99.28502	Sai khao	Khlong Thom	Krabi	3.83	3.51
58	PTO-57-61	SAMRONG NAKPRASERT	Block A	18-05-15	7.75854	99.28224	Sai khao	Khlong Thom	Krabi	5.41	3.20
			Block B		7.75745	99.28182	Sai khao	Khlong Thom	Krabi	8.55	4.00
59	PTO-57-62	THIRAWIT TREUKTRONG	Block A	18-05-15	7.79174	99.34546	Kalase	Si kao	Trang	2.15	2.11
			Block B		7.79268	99.34806	Kalase	Si kao	Trang	4.13	4.13
60	PTO-57-63	PONGSIPAT SRITAMMARAT	Block A	18-05-15	7.72588	99.27951	Sai khao	Khlong Thom	Krabi	9.84	9.84
61	PTO-57-64	SURACHET LUANGIATKAJORN	Block A	18-05-15	7.71490	99.27644	Sai khao	Khlong Thom	Krabi	1.70	1.70
			Block B		7.71563	99.27699	Sai khao	Khlong Thom	Krabi	2.32	2.32
			Block C		7.71583	99.27613	Sai khao	Khlong Thom	Krabi	2.29	2.29
			Block D		7.71368	99.27624	Sai khao	Khlong Thom	Krabi	0.76	0.76
62	PTO-57-67	TATSANAWAN LONGTHEE	Block A	18-05-15	7.73530	99.34470	Kalase	Si kao	Trang	3.96	3.96
63	PTO-57-68	NUTTHAWUT PANAPITAKKUL	Block A	18-05-15	7.77137	99.17464	Khlong Phon	Khlong Thom	Krabi	3.70	3.70



**BUREAU  
VERITAS**

			Block B		7.77126	99.17730	Khlong Phon	Khlong Thom	Krabi	4.61	3.68
			Block D		7.69383	99.22520	Sai khao	Khlong Thom	Krabi	6.12	6.12
			Block E		7.72083	99.28294	Sai khao	Khlong Thom	Krabi	7.51	7.51
64	PTO-57-69	SOMPHONSIT PETKONG	Block A	18-05-15	7.79602	99.32512	Kalase	Si kao	Trang	3.13	0.91
65	PTO-57-71	SOMBOON GLEUAMEEPON	Block A	18-05-15	7.79540	99.31243	Kalase	Si kao	Trang	2.40	2.00
			Block B		7.79639	99.31216	Kalase	Si kao	Trang	3.52	2.64
66	PTO-57-73	PHIAN PHENGSENG	Block A	18-05-15	7.72715	99.26064	Sai khao	Khlong Thom	Krabi	5.95	0.80
			Block B		7.72408	99.26414	Sai khao	Khlong Thom	Krabi	0.81	0.81
			Block C		7.73673	99.28642	Sai khao	Khlong Thom	Krabi	0.49	0.49
			Block D		7.74066	99.28467	Sai khao	Khlong Thom	Krabi	1.96	1.96
67	PTO-57-74	ARPORN SOONJIW	Block A	18-05-15	7.74595	99.33837	Kalase	Si kao	Trang	0.88	0.88
			Block B		7.74676	99.33506	Kalase	Si kao	Trang	0.54	0.34
68	PTO-57-75	SENGYUAD LONGTHEE	Block A	18-05-15	7.74887	99.34721	Kalase	Si kao	Trang	3.61	3.52
69	PTO-57-76	RAEM LONGTHEE	Block A	18-05-15	7.76287	99.29380	Kalase	Si kao	Trang	4.49	1.68
			Block B		7.77092	99.29414	Kalase	Si kao	Trang	1.75	1.75
70	PTO-57-77	NATAWAT PENGDAM	Block A	18-05-15	7.78681	99.33169	Kalase	Si kao	Trang	3.64	3.64
			Block B		7.79777	99.32834	Kalase	Si kao	Trang	2.95	2.95
			Block C		7.79917	99.32906	Kalase	Si kao	Trang	1.35	1.17
			Block D		7.80798	99.32638	Kalase	Si kao	Trang	4.17	4.17



**BUREAU  
VERITAS**

71	PTO-57-78	PONGDISIT NANON	Block A	18-05-15	7.83324	99.32196	Ao Tong	Wang Wiset	Trang	8.00	8.00
72	PTO-57-79	SUJIN PANEUKSAPSAKUL	Block A	18-05-15	7.71799	99.33914	Kalase	Si kao	Trang	11.38	11.38
73	PTO-57-81	ANUCHIT GLEUAMEEPON	Block A	18-05-15	7.78292	99.30073	Kalase	Si kao	Trang	2.09	1.92
			Block B		7.77165	99.31814	Kalase	Si kao	Trang	3.39	3.39
74	PTO-57-82	SUTHAM WANGNHENG	Block A	18-05-15	7.74360	99.30416	Kalase	Si kao	Trang	3.10	3.10
			Block B		7.79084	99.31727	Kalase	Si kao	Trang	1.55	1.55
75	PTO-57-83	YOUNHEX SENGHOR	Block A	18-05-15	7.70162	99.29771	Sai khao	Khlong Thom	Krabi	3.97	3.97
76	PTO-57-84	SURAPHOL THEPSUBAN	Block A	18-05-15	7.74207	99.32673	Kalase	Si kao	Trang	1.63	1.63
77	PTO-57-86	SOMMHAY KAEWSUK	Block A	18-05-15	7.75017	99.26452	Sai khao	Khlong Thom	Krabi	1.80	1.80
			Block B		7.75225	99.25403	Sai khao	Khlong Thom	Krabi	0.82	0.74
			Block C		7.74279	99.24139	Sai khao	Khlong Thom	Krabi	1.98	1.52
			Block D		7.74079	99.25715	Sai khao	Khlong Thom	Krabi	0.96	0.88
78	PTO-57-87	SUNTORN KAEWCHAWANG	Block A	18-05-15	7.79466	99.36303	Wang Maprang Nuea	Wang Wiset	Trang	3.20	2.56
79	PTO-57-88	NATTASIN REUNGKLING	Block A	18-05-15	7.78497	99.30458	Kalase	Si kao	Trang	6.25	6.25
80	PTO-57-89	SAKORN SANGSUK	Block A	18-05-15	7.73727	99.29912	Sai khao	Khlong Thom	Krabi	0.55	0.48
			Block B		7.71788	99.29894	Sai khao	Khlong Thom	Krabi	0.87	0.87
81	PTO-57-90	SANHAN KHUNPRAHAHT	Block A	18-05-15	7.80241	99.33071	Kalase	Si kao	Trang	6.32	6.32
			Block B		7.78403	99.35026	Kalase	Si kao	Trang	1.63	1.63





**BUREAU  
VERITAS**

82	PTO-57-91	SERMSAK LONGTHEE	Block A	18-05-15	7.79150	99.34649	Kalase	Si kao	Trang	2.97	2.97
83	PTO-57-93	SUWIT SINCHAI	Block A	18-05-15	7.76404	99.29894	Kalase	Si kao	Trang	1.75	1.75
84	PTO-57-95	THANAPISAN PANTAKEEREE	Block A	18-05-15	7.72083	99.35347	Wang Maprang Nuea	Wang Wiset	Trang	6.76	6.12
			Block B		7.71961	99.35312	Wang Maprang Nuea	Wang Wiset	Trang	6.42	6.42
85	PTO-57-96	LIANSIW PETCHARAT	Block A	18-05-15	7.76780	99.30339	Kalase	Si kao	Trang	0.99	0.99
86	PTO-57-97	SRISUDA KITCHEUA	Block A	18-05-15	7.72602	99.30038	Sai khao	Khlong Thom	Krabi	4.43	3.04
87	PTO-57-98	PATCHARAPORN WANRAEK	Block A	18-05-15	7.75953	99.29857	Kalase	Si kao	Trang	0.60	0.60
			Block B		7.22588	99.58612	Hat Samran	Hat Samran	Trang	2.20	2.20
			Block C		7.77805	99.31403	Kalase	Si kao	Trang	2.04	2.04
88	PTO-57-99	PHATIPAT KAEWGAMYARN	Block A	18-05-15	7.75263	99.37061	Wang Maprang Nuea	Wang Wiset	Trang	4.21	4.21
89	PTO-57-100	SUWIT SUKSEN	Block A	18-05-15	7.73750	99.36388	Wang Maprang Nuea	Wang Wiset	Trang	6.45	6.45
90	PTO-57-101	CHAWEEWAN BUASUWAN	Block A	18-05-15	7.73828	99.36250	Wang Maprang Nuea	Wang Wiset	Trang	4.36	4.36
91	PTO-61-01	KIARTISIN KANGNGA	Block A	12-03-18	7.68997	99.27126	Sai khao	Khlong Thom	Krabi	4.95	3.35
			Block B		7.68472	99.27191	Sai khao	Khlong Thom	Krabi	5.28	5.24



**BUREAU  
VERITAS**

			Block C		7.68171	99.26833	Sai khao	Khlong Thom	Krabi	2.82	2.10
92	PTO-61-02	KIAOHONG CHOOCHUNJIT	Block A	12-03-18	7.78998	99.31984	Kalase	Si kao	Trang	3.46	3.46
			Block B		7.79933	99.31344	Kalase	Si kao	Trang	2.20	2.20
			Block D		7.76389	99.34132	Kalase	Si kao	Trang	1.43	1.43
			Block E		7.77762	99.30180	Kalase	Si kao	Trang	0.99	0.99
93	PTO-61-03	KAMPHON TOAMAN	Block A	12-03-18	7.70488	99.27275	Sai khao	Khlong Thom	Krabi	3.40	3.40
			Block B		7.71087	99.27780	Sai khao	Khlong Thom	Krabi	1.81	1.81
			Block C		7.70221	99.27429	Sai khao	Khlong Thom	Krabi	2.71	2.63
94	PTO-61-04	CHARUNVIT SOOKCHEEN	Block A	12-03-18	7.79189	99.31430	Kalase	Si kao	Trang	1.59	1.59
			Block B		7.74844	99.33350	Kalase	Si kao	Trang	1.41	1.41
95	PTO-61-05	CHANTANA AUISUI	Block A	12-03-18	7.56238	99.40322	Mai Fat	Si kao	Trang	12.34	12.18
			Block B		7.57757	99.42033	Na Mueang Phet	Si kao	Trang	17.60	17.52
96	PTO-61-06	JAROON JARUKITPIPAT	Block A	12-03-18	7.73001	99.29697	Sai khao	Khlong Thom	Krabi	32.21	15.20
			Block B		7.72306	99.29537	Sai khao	Khlong Thom	Krabi	19.54	16.80
			Block C		7.73563	99.29090	Sai khao	Khlong Thom	Krabi	9.70	9.70
			Block D		7.70296	99.22153	Sai khao	Khlong Thom	Krabi	6.86	6.86
97	PTO-61-07	CHANPHEN NOKSANG	Block A	12-03-18	7.71463	99.33311	Kalase	Si kao	Trang	2.15	2.15
98	PTO-61-08	JIRAYU MEEKAEW	Block A	12-03-18	7.74012	99.30713	Kalase	Si kao	Trang	1.54	1.54
99	PTO-61-09	JEERASAK KHAORUEANG	Block A	12-03-18	7.77953	99.30235	Kalase	Si kao	Trang	0.80	0.80



**BUREAU  
VERITAS**

			Block B		7.79068	99.30856	Kalase	Si kao	Trang	2.37	2.37
100	PTO-61-10	JUREE MATTAYANGKUN	Block A	12-03-18	7.74456	99.31180	Kalase	Si kao	Trang	9.02	2.72
101	PTO-61-11	CHATCHAI RATWIWATTANAPONG	Block A	12-03-18	7.80034	99.64587	Khao Pun	Huai Yot	Trang	11.67	9.20
102	PTO-61-12	CHAWALIT TANPHONG	Block A	12-03-18	7.77464	99.29772	Kalase	Si kao	Trang	4.54	2.56
			Block B		7.79208	99.29984	Kalase	Si kao	Trang	7.52	7.52
103	PTO-61-13	CHOKDEE SRITHAI	Block A	12-03-18	7.74551	99.29809	Sai khao	Khlong Thom	Krabi	1.43	0.95
			Block B		7.79320	99.29594	Sai khao	Khlong Thom	Krabi	2.72	2.72
104	PTO-61-14	NATHAMON PHOTAVORN	Block A	12-03-18	7.73818	99.31682	Kalase	Si kao	Trang	1.49	1.49
			Block B		7.74763	99.33879	Kalase	Si kao	Trang	1.25	1.25
			Block C		7.77508	99.35195	Kalase	Si kao	Trang	2.08	2.08
			Block D		7.77636	99.35274	Kalase	Si kao	Trang	11.68	11.68
105	PTO-61-15	NATAOON RUNGSITHUM	Block A	12-03-18	7.76614	99.32158	Kalase	Si kao	Trang	2.23	2.23
106	PTO-61-16	THAMMAPHON NUKUEA	Block A	12-03-18	7.71303	99.29829	Sai khao	Khlong Thom	Krabi	0.91	0.75
			Block B		7.69597	99.30239	Sai khao	Khlong Thom	Krabi	2.40	2.40
107	PTO-61-18	THAWATCHAI KATANYOO	Block A	12-03-18	7.78086	99.36348	Wang Maprang Nuea	Wang Wiset	Trang	2.17	2.17
			Block B		7.77931	99.36730	Wang Maprang Nuea	Wang Wiset	Trang	2.83	2.19



**BUREAU  
VERITAS**

108	PTO-61-19	TEERAVAT CHUMAKSON	Block A	12-03-18	7.72914	99.39012	Wang Maprang Nuea	Wang Wiset	Trang	3.17	3.17
			Block B		7.71428	99.40264	Wang Maprang	Wang Wiset	Trang	3.30	3.30
			Block C		7.77303	99.29868	Kalase	Si kao	Trang	2.72	2.72
109	PTO-61-20	THEERAWUT ANTANG	Block A	12-03-18	7.72289	99.32221	Kalase	Si kao	Trang	1.50	1.50
			Block B		7.88815	99.41214	Ao Tong	Wang Wiset	Trang	11.29	4.57
110	PTO-61-21	TADARAT SOOKSRIPENG	Block A	12-03-18	7.75948	99.29563	Kalase	Si kao	Trang	0.85	0.85
			Block B		7.77088	99.29912	Kalase	Si kao	Trang	2.74	2.58
			Block C		7.75962	99.29970	Kalase	Si kao	Trang	0.88	0.80
111	PTO-61-22	NOPPORN AUETRAKULVIT	Block A	12-03-18	7.69203	99.31596	Kalase	Si kao	Trang	0.99	0.83
			Block B		7.71209	99.32027	Kalase	Si kao	Trang	11.58	11.58
112	PTO-61-23	NONG CHUMTONG	Block A	12-03-18	7.75494	99.33481	Kalase	Si kao	Trang	1.28	1.16
113	PTO-61-24	BUNRIT CHIAOHENG	Block A	12-03-18	7.72992	99.33521	Kalase	Si kao	Trang	3.65	1.28
			Block B		7.72983	99.33575	Kalase	Si kao	Trang	1.12	1.12
114	PTO-61-25	BUNYARIT SUTHITHAMSIROT	Block A	12-03-18	7.64904	99.30502	Khao mai kao	Si kao	Trang	3.62	1.86
			Block B		7.64901	99.30593	Khao mai kao	Si kao	Trang	1.26	1.22
115	PTO-61-26	PRADIT THAENDUANG	Block A	12-03-18	7.75013	99.32984	Kalase	Si kao	Trang	2.24	2.24
116	PTO-61-27	PRASREAT WANNABUOWON	Block A	12-03-18	7.72695	99.33098	Kalase	Si kao	Trang	2.53	2.08
117	PTO-61-30	PUNNEE SAENGVISUT	Block A	12-03-18	7.68662	99.32743	Kalase	Si kao	Trang	2.75	2.75



**BUREAU  
VERITAS**

			Block B		7.68863	99.33418	Kalase	Si kao	Trang	1.27	1.27
			Block C		7.69315	99.31620	Kalase	Si kao	Trang	1.32	1.28
118	PTO-61-31	PORNSAK LUKMUANG	Block A	12-03-18	7.75995	99.29886	Kalase	Si kao	Trang	0.60	0.60
			Block B		7.76003	99.29751	Kalase	Si kao	Trang	1.20	0.76
119	PTO-61-32	PHOEMSAK PHENGSENG	Block A	12-03-18	7.72770	99.25284	Sai khao	Khlong Thom	Krabi	1.72	1.72
			Block B		7.78777	99.31674	Kalase	Si kao	Trang	2.50	2.34
			Block C		7.78744	99.31802	Kalase	Si kao	Trang	1.74	1.74
120	PTO-61-33	PANUWAT LUALUN	Block A	12-03-18	7.78463	99.31537	Kalase	Si kao	Trang	1.93	1.93
121	PTO-61-34	MITCHA POKAEW	Block A	12-03-18	7.80489	99.33876	Kalase	Si kao	Trang	0.95	0.95
122	PTO-61-35	RITHISAK NUNOI	Block A	12-03-18	7.79674	99.32858	Kalase	Si kao	Trang	3.27	3.27
123	PTO-61-36	WANNAPORN SAEPHON	Block A	12-03-18	7.74690	99.30336	Kalase	Si kao	Trang	1.70	1.70
124	PTO-61-37	WANWITHIP LONGTEE	Block A	12-03-18	7.77161	99.29711	Kalase	Si kao	Trang	2.46	2.46
			Block B		7.77510	99.30808	Kalase	Si kao	Trang	3.70	1.62
			Block C		7.71711	99.30818	Kalase	Si kao	Trang	2.08	2.08
125	PTO-61-38	WALLEE DUJAWAN	Block A	12-03-18	7.74029	99.30663	Kalase	Si kao	Trang	1.66	1.66
126	PTO-61-39	WALAIORN THONGNA	Block A	12-03-18	7.70974	99.29894	Sai khao	Khlong Thom	Krabi	0.58	0.48
			Block B		7.71260	99.30202	Sai khao	Khlong Thom	Krabi	2.34	2.34
			Block C		7.71116	99.30381	Sai khao	Khlong Thom	Krabi	2.52	2.52
			Block D		7.71073	99.30510	Sai khao	Khlong Thom	Krabi	2.31	2.00



**BUREAU  
VERITAS**

			Block E		7.70914	99.29869	Sai khao	Khlong Thom	Krabi	0.57	0.57
127	PTO-61-40	WIPAT SAI-NGAM	Block A	12-03-18	7.77628	99.38631	Wang Maprang Nuea	Wang Wiset	Trang	4.57	4.57
			Block B		7.78288	99.38260	Wang Maprang Nuea	Wang Wiset	Trang	2.98	2.98
			Block C		7.79476	99.30326	Kalase	Si kao	Trang	14.72	13.92
128	PTO-61-41	WIRAT THONGKHAM	Block A	12-03-18	7.75730	99.38050	Wang Maprang Nuea	Wang Wiset	Trang	8.70	8.70
			Block B		7.74866	99.35359	Kalase	Si kao	Trang	1.60	1.60
129	PTO-61-42	WIRAT RAKWIWAT	Block A	12-03-18	7.74092	99.32229	Kalase	Si kao	Trang	1.96	1.96
			Block B		7.74754	99.33095	Kalase	Si kao	Trang	2.75	2.75
			Block C		7.74280	99.33695	Kalase	Si kao	Trang	1.59	1.59
			Block D		7.70918	99.34332	Kalase	Si kao	Trang	6.94	6.94
			Block E		7.75567	99.32401	Kalase	Si kao	Trang	2.48	2.48
130	PTO-61-43	VIROJ TEPPHONPHON	Block A	12-03-18	7.70885	99.35422	Wang Maprang Nuea	Wang Wiset	Trang	1.80	1.48
			Block B		7.75007	99.38903	Wang Maprang Nuea	Wang Wiset	Trang	1.78	1.78



**BUREAU  
VERITAS**

131	PTO-61-44	SAKKASEM CHAITHONG	Block A	12-03-18	7.73758	99.38675	Wang Maprang Nuea	Wang Wiset	Trang	1.68	1.68
132	PTO-61-45	SAKRAPONG SENGHOR	Block A	12-03-18	7.70115	99.30067	Sai khao	Khlong Thom	Krabi	6.55	6.55
			Block B		7.69992	99.29703	Sai khao	Khlong Thom	Krabi	3.31	1.27
			Block C		7.71894	99.30201	Sai khao	Khlong Thom	Krabi	3.22	3.22
			Block D		7.73408	99.34298	Kalase	Si kao	Trang	2.98	2.98
133	PTO-61-46	SAWAT THONGKUM	Block A	12-03-18	7.74828	99.35465	Wang Maprang Nuea	Wang Wiset	Trang	2.57	2.57
			Block B		7.75452	99.38444	Wang Maprang Nuea	Wang Wiset	Trang	2.48	2.48
			Block C		7.74007	99.36190	Wang Maprang Nuea	Wang Wiset	Trang	0.78	0.78
			Block D		7.74157	99.36638	Wang Maprang Nuea	Wang Wiset	Trang	0.26	0.26
			Block E		7.74995	99.38775	Wang Maprang Nuea	Wang Wiset	Trang	1.92	1.92
134	PTO-61-47	SOMSRI JANThONG	Block A	12-03-18	7.75373	99.37274	Wang Maprang Nuea	Wang Wiset	Trang	1.81	1.76
135	PTO-61-48	SANGUAN KHIAWSOD	Block A	12-03-18	7.71074	99.27487	Sai khao	Khlong Thom	Krabi	1.15	1.15



**BUREAU  
VERITAS**

136	PTO-61-49	SOMDET SAMARTHI	Block A	12-03-18	7.71652	99.35143	Wang Maprang Nuea	Wang Wiset	Trang	1.33	1.33
			Block B		7.73652	99.38828	Wang Maprang Nuea	Wang Wiset	Trang	0.55	0.38
137	PTO-61-50	SUTHUM PHONIN	Block A	12-03-18	7.71832	99.35678	Wang Maprang Nuea	Wang Wiset	Trang	2.55	2.55
			Block B		7.71912	99.35809	Wang Maprang Nuea	Wang Wiset	Trang	2.23	2.16
138	PTO-61-51	SOMCHOK WANGCHAMNONG	Block A	12-03-18	7.79985	99.33607	Kalase	Si kao	Trang	1.06	1.06
			Block B		7.79292	99.35198	Kalase	Si kao	Trang	1.58	1.58
139	PTO-61-52	SUTHAM SUDRAK	Block A	12-03-18	7.73295	99.31247	Kalase	Si kao	Trang	2.12	2.12
			Block B		7.73860	99.30940	Kalase	Si kao	Trang	1.48	1.48
140	PTO-61-53	SUCHAT LONGTI	Block A	12-03-18	7.70788	99.31190	Kalase	Si kao	Trang	6.14	2.56
141	PTO-61-54	SUWAT AITSARANUWAT	Block A	12-03-18	7.74002	99.27908	Sai khao	Khlong Thom	Krabi	2.93	2.49
142	PTO-61-55	ATTHAPHON THAWINSITTHIWAT	Block A	12-03-18	7.70216	99.30243	Sai khao	Khlong Thom	Krabi	1.69	1.65
143	PTO-61-56	APHICHAT MEEKAEW	Block A	12-03-18	7.74127	99.30820	Kalase	Si kao	Trang	1.22	1.22
144	PTO-61-57	ATHIT PENGSENG	Block A	12-03-18	7.72094	99.35817	Wang Maprang Nuea	Wang Wiset	Trang	4.10	4.10





**BUREAU  
VERITAS**

			Block B		7.71874	99.35140	Wang Maprang Nuea	Wang Wiset	Trang	5.05	4.16
			Block C		7.70063	99.35965	Wang Maprang Nuea	Wang Wiset	Trang	8.00	7.92
145	PTO-61-58	ITWARA INTHARAT	Block A	12-03-18	7.77483	99.27007	Sai khao	Khlong Thom	Krabi	4.84	4.84
			Block B		7.77338	99.27168	Sai khao	Khlong Thom	Krabi	17.49	17.17
			Block C		7.78873	99.29557	Kalase	Si kao	Trang	1.22	1.22
146	PTO-61-60	EKKASIT PHENGSENG	Block A	12-03-18	7.72465	99.26447	Sai khao	Khlong Thom	Krabi	2.86	2.86
			Block B		7.74198	99.28445	Sai khao	Khlong Thom	Krabi	1.44	1.44
147	PTO-61-62	SIRIRAT KLUEMEEPHON	Block A	12-03-18	7.79558	99.32430	Kalase	Si kao	Trang	4.18	1.72
148	PTO-61-63	SORANAKRIT SOKSEN	Block A	12-03-18	7.72906	99.46034	Khao Wiset	Wang Wiset	Trang	3.37	3.12
149	PTO-61-64	KIADTISAK PHUPHONPRASOET	Block A	12-03-18	7.78602	99.19474	Khlong Phon	Khlong Thom	Krabi	2.07	2.07
			Block B		7.78692	99.19202	Khlong Phon	Khlong Thom	Krabi	2.08	2.08
150	PTO-61-65	WEERAPON KAMAK	Block A	12-03-18	7.80518	99.20884	Khlong Phon	Khlong Thom	Krabi	1.83	1.83
			Block B		7.80626	99.20762	Khlong Phon	Khlong Thom	Krabi	0.80	0.80
			Block C		7.80872	99.20681	Khlong Phon	Khlong Thom	Krabi	1.45	1.45
			Block D		7.82043	99.20172	Khlong Phon	Khlong Thom	Krabi	1.44	1.44
151	PTO-61-66	KITTIPHONG CHINGKHAE	Block A	12-03-18	7.81779	99.23541	Khlong Phon	Khlong Thom	Krabi	6.24	2.40
			Block B		7.81670	99.23629	Khlong Phon	Khlong Thom	Krabi	4.00	4.00



**BUREAU  
VERITAS**

			Block C		7.76824	99.22199	Khlong Phon	Khlong Thom	Krabi	1.27	1.27
152	PTO-61-67	SOMMAI BANDA	Block A	12-03-18	7.84326	99.22111	Khlong Phon	Khlong Thom	Krabi	2.96	2.96
			Block B		7.82315	99.21469	Khlong Phon	Khlong Thom	Krabi	1.20	1.20
			Block C		7.82357	99.21863	Khlong Phon	Khlong Thom	Krabi	3.17	0.69
			Block D		7.84696	99.21964	Khlong Phon	Khlong Thom	Krabi	1.94	1.94
153	PTO-61-68	SAMPHAT LUKPAEN	Block A	12-03-18	7.80684	99.19379	Khlong Phon	Khlong Thom	Krabi	2.23	2.11
			Block B		7.72320	99.26650	Sai khao	Khlong Thom	Krabi	4.48	2.24
			Block C		7.72577	99.24503	Sai khao	Khlong Thom	Krabi	1.87	1.87
154	PTO-61-69	SIKKAWIT KHITSUAN	Block A	12-03-18	7.83257	99.15444	Huai Nam Khao	Khlong Thom	Krabi	2.47	2.47
155	PTO-61-70	MANEE SAINUI	Block A	12-03-18	7.81348	99.22176	Khlong Phon	Khlong Thom	Krabi	2.24	2.24
156	PTO-61-71	KANTHIKA KHAKHONG	Block A	12-03-18	7.69970	99.31633	Kalase	Si kao	Trang	6.18	6.18
157	PTO-61-72	CHUMPHON KHAKHONG	Block A	12-03-18	7.80986	99.27090	Khlong Phon	Khlong Thom	Krabi	37.22	36.80
158	PTO-61-73	SOMNUEK CHUSAWANG	Block A	12-03-18	7.81498	99.23631	Khlong Phon	Khlong Thom	Krabi	2.03	2.03
			Block B		7.81295	99.22945	Khlong Phon	Khlong Thom	Krabi	0.99	0.99
			Block C		7.81232	99.18364	Khlong Phon	Khlong Thom	Krabi	3.21	1.92
			Block D		7.80421	99.25297	Khlong Phon	Khlong Thom	Krabi	5.60	4.50
159	PTO-61-74	UDORN YABPAK	Block A	12-03-18	7.77229	99.18895	Khlong Phon	Khlong Thom	Krabi	2.94	2.94
			Block B		7.72389	99.18522	Khlong Phon	Khlong Thom	Krabi	0.45	0.45
			Block C		7.71999	99.18300	Khlong Phon	Khlong Thom	Krabi	0.46	0.30



**BUREAU  
VERITAS**

			Block D		7.72091	99.18081	Khlong Phon	Khlong Thom	Krabi	0.19	0.19
			Block E		7.72116	99.17893	Khlong Phon	Khlong Thom	Krabi	0.66	0.66
			Block F		7.72056	99.17620	Khlong Phon	Khlong Thom	Krabi	0.77	0.45
			Block G		7.72389	99.17669	Khlong Phon	Khlong Thom	Krabi	0.86	0.86
			Block H		7.75195	99.17452	Khlong Phon	Khlong Thom	Krabi	1.37	1.37
			Block I		7.75810	99.17233	Khlong Phon	Khlong Thom	Krabi	2.69	2.69
			Block J		7.77188	99.18142	Khlong Phon	Khlong Thom	Krabi	0.90	0.90
160	PTO-62-01	KITTI SAOWAPHAK	Block A	04-03-19	7.56206	99.44841	Na Mueang Phet	Si kao	Trang	5.10	5.08
161	PTO-62-02	JARAN KITSRINOPPADOL	Block A	04-03-19	7.66546	99.38839	Wang Maprang	Wang Wiset	Trang	13.76	13.76
162	PTO-62-03	CHAMNONG PHOMMANA	Block A	04-03-19	7.79807	99.32525	Kalase	Si kao	Trang	12.07	12.03
163	PTO-62-04	CHAMRUN THONGNOK	Block A	04-03-19	7.77271	99.35385	Kalase	Si kao	Trang	4.10	4.10
			Block B		7.72833	99.38742	Wang Maprang Nuea	Wang Wiset	Trang	2.42	2.42
			Block C		7.73900	99.39655	Wang Maprang Nuea	Wang Wiset	Trang	6.48	6.40
			Block D		7.77222	99.35152	Kalase	Si kao	Trang	2.56	2.56
			Block E		7.76888	99.34771	Kalase	Si kao	Trang	2.72	2.72
164	PTO-62-06	CHAOWALA SAMPHANTHARAT	Block A	04-03-19	7.41449	99.61833	Thung Krabue	Yan Ta Khao	Trang	6.08	5.60
			Block B		7.41864	99.61943	Thung Krabue	Yan Ta Khao	Trang	16.06	15.98



**BUREAU  
VERITAS**

165	PTO-62-07	CHATCHAI SUTTHITHAMMANON	Block A	04-03-19	7.64464	99.30924	Khao mai kaeo	Si kao	Trang	2.88	2.80
			Block B		7.64527	99.30719	Khao mai kaeo	Si kao	Trang	0.60	0.60
			Block C		7.64512	99.30852	Khao mai kaeo	Si kao	Trang	1.30	1.30
166	PTO-62-08	CHIT SUKSEN	Block A	04-03-19	7.72923	99.41048	Wang Maprang Nuea	Wang Wiset	Trang	1.48	1.48
			Block B		7.72082	99.3957	Wang Maprang Nuea	Wang Wiset	Trang	7.07	6.91
167	PTO-62-09	CHINNAPOP TIHOR	Block A	04-03-19	7.77253	99.33211	Kalase	Si kao	Trang	10.35	10.35
			Block B		7.82765	99.37738	Ao Tong	Wang Wiset	Trang	8.72	8.72
168	PTO-62-10	NATTHAPHAN ANGKURARAT	Block A	04-03-19	7.53247	99.65739	Na Bin La	Mueang Trang	Trang	2.34	2.32
169	PTO-62-11	THIPPAWAN BURAPHASIRIWAT	Block A	04-03-19	7.69403	99.22081	Sai khao	Khlong Thom	Krabi	12.81	12.81
170	PTO-62-12	TRIRASAK PHONSAWAT	Block A	04-03-19	7.74564	99.26439	Sai khao	Khlong Thom	Krabi	1.71	1.36
			Block B		7.72584	99.26828	Sai khao	Khlong Thom	Krabi	8.96	8.96
			Block C		7.72731	99.27393	Sai khao	Khlong Thom	Krabi	0.96	0.96
			Block D		7.72811	99.27752	Sai khao	Khlong Thom	Krabi	3.68	3.68
171	PTO-62-13	NARUEMON RUNGBANNAPHAN	Block A	04-03-19	7.75417	99.32275	Kalase	Si kao	Trang	5.24	5.24
			Block B		7.77643	99.33609	Kalase	Si kao	Trang	3.44	3.44
			Block C		7.71964	99.32358	Kalase	Si kao	Trang	7.09	7.09
			Block D		7.72973	99.32541	Kalase	Si kao	Trang	2.77	0.68



**BUREAU  
VERITAS**

			Block E		7.84738	99.32329	Ao Tong	Wang Wiset	Trang	4.80	4.80
			Block F		7.81986	99.3107	Ao Tong	Wang Wiset	Trang	23.20	22.40
			Block G		7.82446	99.31396	Ao Tong	Wang Wiset	Trang	1.44	1.44
			Block H		7.82340	99.31024	Ao Tong	Wang Wiset	Trang	3.20	3.20
172	PTO-62-14	NIRUT NUANPRANG	Block A	04-03-19	7.76176	99.30003	Kalase	Si kao	Trang	1.15	1.15
173	PTO-62-15	PRAJAG KAEWSRITHONG	Block A	04-03-19	7.76884	99.39567	Wang Maprang Nuea	Wang Wiset	Trang	2.86	2.22
174	PTO-62-16	PRADIT SUKSAN	Block A	04-03-19	7.75241	99.41947	Wang Maprang Nuea	Wang Wiset	Trang	5.50	4.18
			Block B		7.75351	99.4176	Wang Maprang Nuea	Wang Wiset	Trang	1.58	1.58
			Block C		7.76976	99.4039	Wang Maprang Nuea	Wang Wiset	Trang	2.88	1.12
			Block D		7.76981	99.40575	Wang Maprang Nuea	Wang Wiset	Trang	0.80	0.80
175	PTO-62-17	PHOEMPOON BUNJONGPARK	Block A	04-03-19	7.68174	99.27171	Sai khao	Khlong Thom	Krabi	3.10	2.94
176	PTO-62-18	PONGSAKON BOMUANG	Block A	04-03-19	7.71688	99.28013	Sai khao	Khlong Thom	Krabi	1.43	1.43
			Block B		7.64757	99.27905	Khao mai kaeo	Si kao	Trang	1.76	1.76
			Block C		7.59821	99.28679	Bohin	Si kao	Trang	1.92	1.92



**BUREAU  
VERITAS**

			Block D		7.59295	99.30071	Bohin	Si kao	Trang	3.52	3.52
177	PTO-62-19	MAYUREE PANICHKUL	Block A	04-03-19	7.56370	99.50251	Na To Ming	Mueang Trang	Trang	11.22	11.22
			Block B		7.57398	99.38444	Bohin	Si kao	Trang	15.65	15.57
178	PTO-62-21	LERDPHISIT KEEREERAK	Block A	04-03-19	7.71485	99.32732	Kalase	Si kao	Trang	5.68	5.68
			Block B		7.71516	99.32929	Kalase	Si kao	Trang	1.80	1.80
179	PTO-62-22	LIAN SIMTAIYIN	Block A	04-03-19	7.64368	99.31433	Khao mai kaeo	Si kao	Trang	1.34	1.34
			Block B		7.64302	99.31314	Khao mai kaeo	Si kao	Trang	2.36	2.36
180	PTO-62-23	WACHARA AEDCHUTONG	Block A	04-03-19	7.82024	99.37312	Ao Tong	Wang Wiset	Trang	2.02	2.02
			Block B		7.82287	99.37382	Ao Tong	Wang Wiset	Trang	3.56	1.12
181	PTO-62-24	VIWAT SINGHATOW	Block A	04-03-19	7.76754	99.29246	Kalase	Si kao	Trang	10.67	9.84
182	PTO-62-25	VENA RATTHANAPHON	Block A	04-03-19	7.53075	99.34955	Mai Fat	Si kao	Trang	4.86	4.80
183	PTO-62-26	SASIPIM PIMPILAR	Block A	04-03-19	7.78099	99.35546	Kalase	Si kao	Trang	2.88	2.84
			Block B		7.78084	99.35452	Kalase	Si kao	Trang	0.52	0.52
184	PTO-62-27	SAHNGA MANTHANOM	Block A	04-03-19	7.78832	99.29190	Sai khao	Khlong Thom	Krabi	5.60	5.60
			Block B		7.79529	99.29576	Sai khao	Khlong Thom	Krabi	13.60	13.60
185	PTO-62-28	SUNITHA CHAROENPHIRIYA	Block A	04-03-19	7.90597	99.51213	Ban Ni Khom	Bang Khan	Nakhon Si Thammarat	7.26	7.26
186	PTO-62-29	SUWANNA BUALERT	Block A	04-03-19	7.57270	99.40235	Bohin	Si kao	Trang	21.40	21.28
187	PTO-62-31	ANUCHIT NUNOI	Block A	04-03-19	7.41154	99.57088	Khlong Chi Lom	Kantang	Trang	7.02	6.50
			Block B		7.40493	99.57011	Khlong Chi Lom	Kantang	Trang	8.64	8.48



**BUREAU  
VERITAS**

188	PTO-62-32	ACHAVA KITSRINOPADOL	Block A	04-03-19	7.58592	99.29036	Bohin	Si kao	Trang	2.40	2.40
189	PTO-62-33	AMPORN YODSRI	Block B		7.71542	99.39303	Wang Maprang Nuea	Wang Wiset	Trang	2.11	2.11
190	PTO-62-34	KITTISAK RAKBUREE	Block A	04-03-19	7.82950	99.21887	Khlong Phon	Khlong Thom	Krabi	0.94	0.94
			Block B		7.84235	99.21963	Khlong Phon	Khlong Thom	Krabi	2.08	1.40
191	PTO-62-35	KOWIT AUNGCHUAN	Block A	04-03-19	7.77880	99.22254	Khlong Phon	Khlong Thom	Krabi	5.95	5.95
192	PTO-62-36	KHANTA SUYKIM	Block A	04-03-19	7.78096	99.19998	Khlong Phon	Khlong Thom	Krabi	1.64	1.64
			Block B		7.78143	99.19749	Khlong Phon	Khlong Thom	Krabi	1.73	1.73
			Block C		7.77958	99.19968	Khlong Phon	Khlong Thom	Krabi	1.82	1.78
193	PTO-62-37	KOMSAN KONGSRI	Block A	04-03-19	7.81287	99.26431	Khlong Phon	Khlong Thom	Krabi	15.47	15.39
194	PTO-62-38	CHALIT BOONMAPRASIT	Block A	04-03-19	7.81874	99.19933	Khlong Phon	Khlong Thom	Krabi	1.58	1.58
			Block B		7.77244	99.24907	Sai khao	Khlong Thom	Krabi	3.36	3.36
			Block C		7.81797	99.2129	Khlong Phon	Khlong Thom	Krabi	4.05	2.88
195	PTO-62-39	CHALO SAMUTSONGKHRAM	Block A	04-03-19	7.76304	99.15804	Khlong Phon	Khlong Thom	Krabi	5.13	5.13
196	PTO-62-40	DUEANPHEN SREESUWAN	Block A	04-03-19	7.81564	99.27276	Khlong Phon	Khlong Thom	Krabi	4.48	4.48
			Block B		7.81837	99.27329	Khlong Phon	Khlong Thom	Krabi	1.76	1.76
			Block C		7.79834	99.20672	Khlong Phon	Khlong Thom	Krabi	1.98	1.82
197	PTO-62-41	THAMMAPHON KHAMAK	Block A	04-03-19	7.83053	99.20026	Khlong Phon	Khlong Thom	Krabi	1.32	1.32
			Block B		7.80958	99.21338	Khlong Phon	Khlong Thom	Krabi	1.12	1.12
198	PTO-62-43	NONGKHRAN JANTARAT	Block A	04-03-19	7.81190	99.25653	Khlong Phon	Khlong Thom	Krabi	3.96	3.96



**BUREAU  
VERITAS**

199	PTO-62-44	BOONLUEA NAMYANG	Block A	04-03-19	7.83555	99.25152	Khlong Phon	Khlong Thom	Krabi	4.21	4.21
200	PTO-62-45	PRAWING DEECHAI	Block A	04-03-19	7.80707	99.25713	Khlong Phon	Khlong Thom	Krabi	2.33	1.80
201	PTO-62-46	PUAN THONGKHAMDI	Block A	04-03-19	7.84846	99.24318	Khlong Phon	Khlong Thom	Krabi	6.85	6.85
202	PTO-62-47	MAYUREE KRAWSRI	Block A	04-03-19	7.80281	99.27341	Khlong Phon	Khlong Thom	Krabi	22.13	22.13
			Block B		7.76725	99.20666	Khlong Phon	Khlong Thom	Krabi	1.92	1.92
			Block C		7.76852	99.20659	Khlong Phon	Khlong Thom	Krabi	1.42	0.94
203	PTO-62-48	MONGKHON KHONGSABAI	Block A	04-03-19	7.77316	99.20829	Khlong Phon	Khlong Thom	Krabi	1.54	1.54
204	PTO-62-49	YAMAN KHAWICHIT	Block A	04-03-19	7.80233	99.23249	Khlong Phon	Khlong Thom	Krabi	1.55	1.55
205	PTO-62-50	WATTANAWIT SAKE	Block A	04-03-19	7.77059	99.18957	Khlong Phon	Khlong Thom	Krabi	0.86	0.86
206	PTO-62-51	WIN SAENHIRAN	Block A	04-03-19	7.78079	99.16617	Khlong Phon	Khlong Thom	Krabi	2.94	2.36
207	PTO-62-52	SIKKARIN SUWATNAPHAN	Block A	04-03-19	7.78630	99.20278	Khlong Phon	Khlong Thom	Krabi	2.60	2.60
208	PTO-62-53	SAMUT AMORNPHANSIRI	Block A	04-03-19	7.79255	99.19131	Khlong Phon	Khlong Thom	Krabi	2.36	2.36
209	PTO-62-54	SUCHIN PHUNPHON	Block A	04-03-19	7.81258	99.22848	Khlong Phon	Khlong Thom	Krabi	0.99	0.99
210	PTO-62-55	SUWAN KANKHAENG	Block A	04-03-19	7.82454	99.26463	Khlong Phon	Khlong Thom	Krabi	10.08	10.08
			Block B		7.81315	99.23312	Khlong Phon	Khlong Thom	Krabi	3.11	3.11
			Block C		7.79953	99.25422	Khlong Phon	Khlong Thom	Krabi	4.00	4.00
			Block D		7.80752	99.20774	Khlong Phon	Khlong Thom	Krabi	1.17	1.12
			Block E		7.82069	99.27083	Khlong Phon	Khlong Thom	Krabi	16.00	16.00
211	PTO-62-56	SOMPHON NGANDEE	Block A	04-03-19	7.84814	99.24917	Khlong Phon	Khlong Thom	Krabi	4.80	4.80





**BUREAU  
VERITAS**

			Block B		7.83052	99.25370	Khlong Phon	Khlong Thom	Krabi	2.88	2.88
212	PTO-62-57	HAMITA LUKHYI	Block A	04-03-19	7.81356	99.21946	Khlong Phon	Khlong Thom	Krabi	0.70	0.70
			Block B		7.81979	99.21555	Khlong Phon	Khlong Thom	Krabi	1.06	1.06
			Block C		7.81883	99.21704	Khlong Phon	Khlong Thom	Krabi	0.59	0.59
213	PTO-62-58	KRIANGKRAI KLAOKLIANG	Block A	04-03-19	7.83979	99.52852	Bang Dee	Huai Yot	Trang	1.69	1.53
			Block B		7.83684	99.53190	Bang Dee	Huai Yot	Trang	0.36	0.36
			Block D		7.80225	99.52123	Bang Dee	Huai Yot	Trang	7.57	7.57
214	PTO-62-59	JAROONGSAK JANTARAMAS	Block A	04-03-19	7.84976	99.56878	Nong Chang Laen	Huai Yot	Trang	0.91	0.91
215	PTO-62-60	BANCHA BANNAKIT	Block A	04-03-19	7.85647	99.52441	Bang Dee	Huai Yot	Trang	0.67	0.64
			Block B		7.81466	99.53537	Khao Kop	Huai Yot	Trang	1.23	1.15
216	PTO-62-61	BUNLERT DECHPAKDEE	Block A	04-03-19	7.83937	99.53698	Bang Dee	Huai Yot	Trang	0.89	0.89
			Block C		7.84230	99.53685	Bang Dee	Huai Yot	Trang	2.02	2.02
217	PTO-62-62	PRATEEP POLJAN	Block A	04-03-19	7.81347	99.54635	Khao Kop	Huai Yot	Trang	1.44	1.44
			Block B		7.81531	99.54680	Khao Kop	Huai Yot	Trang	0.88	0.88
218	PTO-62-64	PONGSAK KOSAIYAKANON	Block A	04-03-19	7.87108	99.55623	Huai Nang	Huai Yot	Trang	5.54	5.54
			Block B		7.87220	99.55784	Huai Nang	Huai Yot	Trang	6.57	6.57
219	PTO-62-66	WIRAT KLAOKLIANG	Block A	04-03-19	7.84941	99.52711	Bang Dee	Huai Yot	Trang	4.59	4.11
			Block B		7.83774	99.53100	Bang Dee	Huai Yot	Trang	1.32	1.32
220	PTO-62-68	SIRIWAT KLAOKLIANG	Block A	04-03-19	7.84380	99.50976	Bang Dee	Huai Yot	Trang	2.09	2.09



**BUREAU  
VERITAS**

			Block B		7.82083	99.50851	Bang Dee	Huai Yot	Trang	0.80	0.80
			Block C		7.83658	99.49931	Bang Dee	Huai Yot	Trang	1.60	1.60
221	PTO-62-69	SOMMAI PROMMA	Block A	04-03-19	7.86482	99.46781	Bang Dee	Huai Yot	Trang	2.52	2.52
			Block B		7.83676	99.54661	Khao Kop	Huai Yot	Trang	1.40	1.36
222	PTO-62-70	SUNUN RAMTHEP	Block A	04-03-19	7.85615	99.52947	Bang Dee	Huai Yot	Trang	5.35	5.35
223	PTO-62-71	SURACHAI THONGYING	Block A	04-03-19	7.85741	99.54544	Nong Chang Laen	Huai Yot	Trang	1.68	1.68
224	PTO-62-75	APAI BOONTHAWORN	Block A	04-03-19	7.86161	99.52392	Bang Dee	Huai Yot	Trang	2.45	2.45
225	PTO-62-78	CHALIAO CHUCHUAI	Block A	04-03-19	7.66123	99.55588	Na Tham Tai	Mueang	Trang	2.40	2.40
			Block B		7.65465	99.56461	Na Tham Tai	Mueang	Trang	3.91	2.88
226	PTO-62-79	CHAIWAT CHIWATHON	Block A	04-03-19	7.79311	99.58852	Khao Kop	Huai Yot	Trang	2.40	2.24
			Block B		7.79344	99.58653	Khao Kop	Huai Yot	Trang	0.77	0.72
227	PTO-62-80	CHIAN JANPUT	Block A	04-03-19	7.79873	99.55336	Khao Kop	Huai Yot	Trang	2.95	0.97
228	PTO-62-81	CHAONIT PANIT	Block A	04-03-19	7.72826	99.59044	Pak Khom	Huai Yot	Trang	9.78	3.02
			Block B		7.72789	99.58715	Pak Khom	Huai Yot	Trang	6.88	3.52
			Block C		7.73114	99.58312	Pak Khom	Huai Yot	Trang	5.77	5.77
			Block D		7.73835	99.58396	Pak Khom	Huai Yot	Trang	0.45	0.45
229	PTO-62-82	TUNG INNURAK	Block A	04-03-19	7.76798	99.58599	Thung To	Huai Yot	Trang	0.90	0.90
			Block B		7.74763	99.60460	Pak Khom	Huai Yot	Trang	0.77	0.69
230	PTO-62-84	NIVISTHA WINSON	Block A	04-03-19	7.78158	99.58853	Khao Kop	Huai Yot	Trang	0.83	0.83



**BUREAU  
VERITAS**

			Block B		7.77665	99.58393	Khao Kop	Huai Yot	Trang	3.07	3.07
231	PTO-62-85	PIYABUD KHWANMUENG	Block A	04-03-19	7.68921	99.61640	na Tham Nuae	mueang	Trang	0.74	0.74
			Block B		7.68804	99.59425	Lamphura	Huai Yot	Trang	0.90	0.83
232	PTO-62-86	PADUNSAK TAYOPRAGRAN	Block A	04-03-19	7.74602	99.56248	Thung To	Huai Yot	Trang	3.08	2.96
233	PTO-62-87	PEERAPHOP NGUANSON	Block A	04-03-19	7.78236	99.57769	Khao Kop	Huai Yot	Trang	2.08	2.08
234	PTO-62-88	VICHAJ SITSUKSAI	Block A	04-03-19	7.74544	99.56975	Thung To	Huai Yot	Trang	3.59	3.59
			Block B		7.74230	99.56933	Thung To	Huai Yot	Trang	2.87	2.87
			Block C		7.91615	99.59149	Khuan Mao	Ratsada	Trang	5.40	4.28
			Block D		7.91290	99.58854	Khuan Mao	Ratsada	Trang	13.76	6.96
			Block E		7.91193	99.58953	Khuan Mao	Ratsada	Trang	2.16	0.80
			Block F		7.91160	99.59082	Khuan Mao	Ratsada	Trang	0.72	0.72
			Block G		7.91185	99.58838	Khuan Mao	Ratsada	Trang	3.76	3.76
235	PTO-62-89	WIRIN CHUJIT	Block A	04-03-19	7.78405	99.60713	Khao Khao	Huai Yot	Trang	1.54	1.46
			Block B		7.78420	99.61508	Huai Yot	Huai Yot	Trang	0.89	0.80
236	PTO-62-90	VIROTE CHOOSAENG	Block A	04-03-19	7.77988	99.60627	Thung To	Huai Yot	Trang	2.51	2.44
237	PTO-62-91	WIROT NUNUM	Block A	04-03-19	7.74182	99.58115	Thung To	Huai Yot	Trang	0.89	0.89
			Block B		7.74775	99.59684	Pak Khom	Huai Yot	Trang	2.31	0.80
238	PTO-62-92	WILAI HUAHUAD	Block A	04-03-19	7.77850	99.58405	Khao Kop	Huai Yot	Trang	1.10	1.10
239	PTO-62-93	WISOOT CHANSIRIKARN	Block A	04-03-19	7.78422	99.59120	Khao Kop	Huai Yot	Trang	2.30	2.30



**BUREAU  
VERITAS**

			Block B		7.79691	99.59415	Khao Kop	Huai Yot	Trang	1.04	1.04
			Block C		7.79805	99.59549	Khao Kop	Huai Yot	Trang	1.17	1.17
			Block D		7.78230	99.58342	Khao Kop	Huai Yot	Trang	7.58	7.58
240	PTO-62-94	WAIPHOB TUNPALUNG	Block A	04-03-19	7.77854	99.67393	Huai Yot	Huai Yot	Trang	2.72	2.64
241	PTO-62-95	SANIT KANHAWICHAI	Block A	04-03-19	7.78038	99.60693	Thung To	Huai Yot	Trang	2.46	2.46
242	PTO-62-96	SRISUPORN INTREE	Block A	04-03-19	7.74011	99.58978	Pak Khom	Huai Yot	Trang	0.51	0.51
243	PTO-62-97	SUKOL PIYAPHANEEKUL	Block A	04-03-19	7.85079	99.59353	Nong Chang Laen	Huai Yot	Trang	1.33	1.33
244	PTO-62-98	SAHAT PUTTASIT	Block A	04-03-19	7.85191	99.58154	Nong Chang Laen	Huai Yot	Trang	4.38	4.38
			Block B		7.83259	99.57970	Nong Chang Laen	Huai Yot	Trang	0.44	0.44
245	PTO-62-99	SUCHADA WINSON	Block A	04-03-19	7.78064	99.58998	Khao Kop	Huai Yot	Trang	1.19	1.19
			Block B		7.77572	99.58098	Khao Kop	Huai Yot	Trang	6.40	6.40
246	PTO-62-100	SUCHOK PETSUT	Block A	04-03-19	7.77842	99.66376	Huai Yot	Huai Yot	Trang	4.80	4.48
247	PTO-62-101	SUDPRASERT LUDKONG	Block A	04-03-19	7.76350	99.64314	Huai Yot	Huai Yot	Trang	1.97	1.81
248	PTO-62-102	SURACHET WANNASAENGTHONG	Block A	04-03-19	7.79830	99.53632	Khao Kop	Huai Yot	Trang	0.86	0.80
249	PTO-62-103	SOMMUNG MEESOOK	Block A	04-03-19	7.78021	99.59985	Khao Khao	Huai Yot	Trang	2.47	2.39
			Block B		7.77950	99.60488	Thung To	Huai Yot	Trang	0.34	0.34
250	PTO-62-104	SOMSAK SIRIMATAYANANT	Block A	04-03-19	7.79881	99.56231	Khao Kop	Huai Yot	Trang	10.68	3.20
251	PTO-62-105	SOPON PICHAIRAT	Block A	04-03-19	7.81916	99.58930	Nong Chang Laen	Huai Yot	Trang	3.03	3.03
			Block B		7.82376	99.58356	Nong Chang Laen	Huai Yot	Trang	2.28	2.24



**BUREAU  
VERITAS**

252	PTO-62-107	APICHAT KIADMETHA	Block A	04-03-19	7.74512	99.56331	Thung To	Huai Yot	Trang	4.90	2.50
253	PTO-62-108	UDOM LAOHAPRAPANON	Block A	04-03-19	7.73914	99.57654	Thung To	Huai Yot	Trang	5.77	5.57
254	PTO-62-109	KRIANGSAK DECHPAKDEE	Block A	04-03-19	7.87955	99.62361	Nong Chang Laen	Huai Yot	Trang	0.48	0.48
			Block B		7.88599	99.64023	Nong Prue	Ratsada	Trang	1.60	1.60
			Block C		7.87684	99.62382	Nong Chang Laen	Huai Yot	Trang	3.83	3.83
			Block D		7.88400	99.63968	Nong Prue	Ratsada	Trang	1.25	1.25
			Block E		7.88760	99.63989	Nong Prue	Ratsada	Trang	0.52	0.52
			Block F		7.92469	99.66539	Nong Prue	Ratsada	Trang	4.00	3.45
			Block G		7.91769	99.69012	Nong Prue	Ratsada	Trang	2.40	2.40
255	PTO-62-110	CHAMNARN SRITHONG	Block A	04-03-19	7.85127	99.60359	Nong Chang Laen	Huai Yot	Trang	1.69	1.69
			Block B		7.84961	99.59863	Nong Chang Laen	Huai Yot	Trang	1.64	1.64
			Block C		7.86280	99.60851	Nong Chang Laen	Huai Yot	Trang	1.19	1.19
			Block D		7.86283	99.61051	Nong Chang Laen	Huai Yot	Trang	1.35	0.55
256	PTO-62-111	CHUTIPHON KHAMNET	Block A	04-03-19	7.86509	99.66361	Nong Prue	Ratsada	Trang	1.28	1.28
			Block B		7.86135	99.68831	Nong Prue	Ratsada	Trang	1.34	1.34
257	PTO-62-112	CHALUAY SRISONG	Block A	04-03-19	7.85061	99.61560	Nong Chang Laen	Huai Yot	Trang	1.64	1.32
			Block B		7.84916	99.61672	Nong Chang Laen	Huai Yot	Trang	2.63	2.63
			Block C		7.85037	99.61794	Nong Chang Laen	Huai Yot	Trang	1.34	1.34
258	PTO-62-113	DIREK WANNABOWORN	Block A	04-03-19	7.88339	99.57814	Huai Nang	Huai Yot	Trang	8.64	8.64



**BUREAU  
VERITAS**

			Block B		7.88668	99.58417	Huai Nang	Huai Yot	Trang	2.08	2.08
259	PTO-62-114	THAWORN NUWUN	Block A	04-03-19	7.88909	99.66860	Nong Prue	Ratsada	Trang	4.65	4.65
260	PTO-62-115	SONGSAK KUBSRION	Block A	04-03-19	7.93032	99.59492	Khuan Mao	Ratsada	Trang	12.98	8.62
261	PTO-62-116	THAMMAWIT TIANGTHAM	Block A	04-03-19	7.87875	99.65925	Nong Prue	Ratsada	Trang	3.04	3.04
			Block B		7.88393	99.66672	Nong Prue	Ratsada	Trang	1.76	1.76
			Block C		7.86948	99.65745	Nong Prue	Ratsada	Trang	2.85	2.85
262	PTO-62-117	BOONDOB JUNSAK	Block A	04-03-19	7.82262	99.61031	Nong Chang Laen	Huai Yot	Trang	1.97	1.97
			Block B		7.82926	99.62484	Nong Chang Laen	Huai Yot	Trang	0.57	0.57
263	PTO-62-118	NOPPADON RAKNAY	Block A	04-03-19	7.82721	99.62702	Khao Khao	Huai Yot	Trang	0.43	0.43
			Block B		7.82641	99.62610	Khao Khao	Huai Yot	Trang	0.90	0.90
			Block C		7.82702	99.62499	Khao Khao	Huai Yot	Trang	1.93	1.29
			Block D		7.82729	99.62404	Khao Khao	Huai Yot	Trang	0.43	0.43
			Block E		7.82312	99.61983	Khao Khao	Huai Yot	Trang	4.07	4.07
			Block F		7.88301	99.64266	Nong Prue	Ratsada	Trang	2.09	2.09
			Block G		7.86838	99.62139	Nong Chang Laen	Huai Yot	Trang	0.74	0.74
			Block H		7.89493	99.64881	Nong Prue	Ratsada	Trang	4.91	4.91
264	PTO-62-119	PRAMUAL MAIPROM	Block A	04-03-19	7.83090	99.59131	Nong Chang Laen	Huai Yot	Trang	0.59	0.59
			Block B		7.82468	99.60927	Nong Chang Laen	Huai Yot	Trang	0.78	0.78
			Block C		7.82694	99.60776	Nong Chang Laen	Huai Yot	Trang	1.00	1.00



**BUREAU  
VERITAS**

265	PTO-62-120	PRASERT SAKULPAK	Block A	04-03-19	7.86728	99.67414	Nong Prue	Ratsada	Trang	5.40	2.96
266	PTO-62-121	PANNEE SATASAN	Block A	04-03-19	7.90105	99.62159	Khuan Mao	Ratsada	Trang	4.14	4.14
			Block B		7.90030	99.62306	Khuan Mao	Ratsada	Trang	4.94	4.94
267	PTO-62-122	POSAKORN SUWANTAWEE	Block A	04-03-19	7.88905	99.55692	Huai Nang	Huai Yot	Trang	15.82	15.80
			Block B		7.90269	99.55002	Huai Nang	Huai Yot	Trang	2.98	2.94
268	PTO-62-123	POONSIN ONKLIANG	Block A	04-03-19	7.84423	99.65028	Tha Ngio	Huai Yot	Trang	2.53	2.53
269	PTO-62-124	MONTAE TANTICHAYAKUN	Block A	04-03-19	7.91883	99.52361	Ban Ni Khom	Bang Khan	Nakhon Si Thammarat	2.61	0.93
			Block B		7.91834	99.51653	Ban Ni Khom	Bang Khan	Nakhon Si Thammarat	6.29	6.25
			Block C		7.90401	99.52154	Ban Ni Khom	Bang Khan	Nakhon Si Thammarat	3.21	3.21
270	PTO-62-125	YINDEE KONGCHEEPA	Block A	04-03-19	7.84929	99.61453	Nong Chang Laen	Huai Yot	Trang	2.97	2.97
			Block B		7.85582	99.61828	Nong Chang Laen	Huai Yot	Trang	10.20	2.60
			Block C		7.81565	99.64507	Khao Pun	Huai Yot	Trang	1.26	1.26
271	PTO-62-126	LADDA KAYAO	Block A	04-03-19	7.84413	99.60342	Nong Chang Laen	Huai Yot	Trang	7.61	7.61
272	PTO-62-128	WICHAN JITAUKSORN	Block A	04-03-19	7.93167	99.6206	Khuan Mao	Ratsada	Trang	2.86	2.52
			Block B		7.82676	99.64171	Tha Ngio	Huai Yot	Trang	1.11	1.11
273	PTO-62-129	WITTAYA LOKUTTARA	Block A	04-03-19	7.88377	99.61853	Nong Chang Laen	Huai Yot	Trang	5.14	5.14
			Block B		7.86084	99.62485	Nong Chang Laen	Huai Yot	Trang	1.78	1.78
			Block C		7.86018	99.62433	Nong Chang Laen	Huai Yot	Trang	1.20	0.96
274	PTO-62-130	WILAIWAN SUKRAT	Block A	04-03-19	7.93330	99.67835	Khao Phrai	Ratsada	Trang	1.90	1.74



**BUREAU  
VERITAS**

			Block B		7.93821	99.67732	Khao Phrai	Ratsada	Trang	0.50	0.50
275	PTO-62-131	SUPAKEAT PANTAPIVATT	Block A	04-03-19	7.85379	99.61396	Nong Chang Laen	Huai Yot	Trang	17.18	17.04
276	PTO-62-132	SUWANNEE GEAWLAK	Block A	04-03-19	7.93285	99.67897	Khao Phrai	Ratsada	Trang	4.03	1.95
277	PTO-62-133	SOMKID MUNTHAEN	Block A	04-03-19	7.86032	99.60717	Nong Chang Laen	Huai Yot	Trang	3.52	1.92
			Block B		7.83813	99.60222	Nong Chang Laen	Huai Yot	Trang	3.63	2.95
278	PTO-62-134	SOMJIT DACHASAK	Block A	04-03-19	7.81607	99.60263	Nong Chang Laen	Huai Yot	Trang	3.16	1.84
			Block B		7.81793	99.60567	Nong Chang Laen	Huai Yot	Trang	0.67	0.67
279	PTO-62-135	SOMNUEK MAIPROM	Block A	04-03-19	7.82251	99.61348	Nong Chang Laen	Huai Yot	Trang	0.68	0.68
			Block B		7.82494	99.61408	Nong Chang Laen	Huai Yot	Trang	0.45	0.45
280	PTO-62-137	AIM SAKWARAKUN	Block A	04-03-19	7.93414	99.67913	Khao Phrai	Ratsada	Trang	9.03	4.80
281	PTO-62-138	EKASIT WANGTRAKUL	Block A	04-03-19	7.87036	99.67885	Nong Prue	Ratsada	Trang	16.17	15.81
			Block B		7.87235	99.68087	Nong Prue	Ratsada	Trang	4.69	4.69
282	PTO-62-139	AMNAT CHAITHONG	Block A	04-03-19	7.86624	99.60333	Nong Chang Laen	Huai Yot	Trang	4.34	4.30
			Block B		7.87687	99.58372	Huai Nang	Huai Yot	Trang	2.96	2.96
283	PTO-62-140	KRITSANAWAN KAEWRAT	Block A	04-03-19	8.11544	99.17895	Phru Din Na	Khlong Thom	Krabi	1.69	1.69
			Block B	04-03-19	8.12654	99.13154	Phela	Khlong Thom	Krabi	2.41	2.41
			Block C	04-03-19	8.11505	99.18081	Phru Din Na	Khlong Thom	Krabi	4.09	4.09
			Block D	04-03-19	8.10265	99.16482	Phela	Khlong Thom	Krabi	4.33	4.33
284	PTO-62-141	KANYAKON KAEOSRI	Block A	04-03-19	8.14666	99.18587	Phela	Khlong Thom	Krabi	3.18	3.18





**BUREAU  
VERITAS**

			Block B	04-03-19	8.11455	99.14547	Phela	Khlong Thom	Krabi	1.69	1.69
285	PTO-62-142	KANCHANA BUNMANEE	Block A	04-03-19	8.08905	99.12774	Phela	Khlong Thom	Krabi	2.95	2.95
286	PTO-62-143	KANCHANA BUTRLIAM	Block A	04-03-19	8.16391	99.16069	Phela	Khlong Thom	Krabi	8.00	7.04
			Block B	04-03-19	8.13731	99.14144	Phela	Khlong Thom	Krabi	3.18	1.14
			Block C	04-03-19	8.11167	99.14469	Phela	Khlong Thom	Krabi	0.94	0.78
			Block D	04-03-19	8.01542	99.08009	Pakasai	Nuea Khlong	Krabi	2.80	1.68
287	PTO-62-144	KARAKET MENGCHUAI	Block A	04-03-19	8.12167	99.15245	Phela	Khlong Thom	Krabi	2.27	2.27
			Block B	04-03-19	8.11895	99.15418	Phela	Khlong Thom	Krabi	2.70	2.70
288	PTO-62-145	KITJA TUPTRI	Block A	04-03-19	8.09888	99.13078	Phela	Khlong Thom	Krabi	1.81	1.81
			Block B	04-03-19	8.09859	99.13211	Phela	Khlong Thom	Krabi	2.90	2.86
289	PTO-62-146	KLIANG SRIMUEANG	Block A	04-03-19	8.12281	99.13290	Phela	Khlong Thom	Krabi	2.90	2.74
290	PTO-62-147	KESORN AIANLENG	Block A	04-03-19	8.15101	99.17492	Phela	Khlong Thom	Krabi	1.83	1.83
291	PTO-62-148	KASORN THONGJAREON	Block A	04-03-19	8.06995	99.10798	Phela	Khlong Thom	Krabi	8.48	8.48
			Block B	04-03-19	8.08947	99.12593	Phela	Khlong Thom	Krabi	1.99	1.99
			Block C	04-03-19	8.09196	99.12641	Phela	Khlong Thom	Krabi	12.56	12.56
			Block D	04-03-19	8.10447	99.13063	Phela	Khlong Thom	Krabi	1.21	1.21
			Block E	04-03-19	8.08949	99.12542	Phela	Khlong Thom	Krabi	0.91	0.91
			Block F	04-03-19	7.96821	99.19443	Khlong Thom Tai	Khlong Thom	Krabi	11.20	7.28
			Block G	04-03-19	8.03638	99.15053	Phela	Khlong Thom	Krabi	3.36	3.36



**BUREAU  
VERITAS**

			Block H	04-03-19	8.03672	99.14966	Phela	Khlong Thom	Krabi	2.40	2.40
			Block I	04-03-19	8.05915	99.15565	Phela	Khlong Thom	Krabi	5.60	5.60
			Block J	04-03-19	8.07024	99.09935	Khok Yang	Nuea Khlong	Krabi	1.92	1.92
292	PTO-62-149	KOSON KHONGSRILANG	Block A	04-03-19	8.1299	99.18287	Phela	Khlong Thom	Krabi	1.32	1.32
			Block B	04-03-19	8.12354	99.18248	Phela	Khlong Thom	Krabi	1.10	1.10
293	PTO-62-150	KHANITTHA KAEWLUK	Block A	04-03-19	8.14196	99.16329	Phela	Khlong Thom	Krabi	2.20	2.20
294	PTO-62-151	KHLONG SRITHONG	Block A	04-03-19	8.09407	99.15107	Phela	Khlong Thom	Krabi	1.14	1.14
295	PTO-62-152	CHARAN KAEOSISOD	Block A	04-03-19	8.09142	99.14457	Phela	Khlong Thom	Krabi	1.35	1.31
296	PTO-62-153	CHANYA SITHONG	Block A	04-03-19	8.12717	99.17303	Phela	Khlong Thom	Krabi	9.92	9.92
			Block B	04-03-19	8.11262	99.15255	Phela	Khlong Thom	Krabi	2.97	2.97
			Block C	04-03-19	8.12762	99.16094	Phela	Khlong Thom	Krabi	4.16	4.00
297	PTO-62-154	CHARUEK OAKSONKHONG	Block A	04-03-19	8.10656	99.13111	Phela	Khlong Thom	Krabi	5.48	4.32
			Block B	04-03-19	8.11670	99.12119	Phela	Khlong Thom	Krabi	7.75	7.75
			Block C	04-03-19	8.10811	99.12825	Phela	Khlong Thom	Krabi	0.64	0.64
298	PTO-62-155	CHARUNEE AENGCHUAN	Block A	04-03-19	8.16814	99.18335	Phela	Khlong Thom	Krabi	7.84	7.84
			Block B	04-03-19	8.11965	99.14826	Phela	Khlong Thom	Krabi	1.56	1.56
			Block C	04-03-19	8.08588	99.12066	Phela	Khlong Thom	Krabi	5.60	5.60
			Block D	04-03-19	8.10405	99.13641	Phela	Khlong Thom	Krabi	2.69	2.69
299	PTO-62-156	JAMNONG KAEWMANEE	Block A	04-03-19	8.13117	99.16093	Phela	Khlong Thom	Krabi	2.08	2.08



**BUREAU  
VERITAS**

			Block B	04-03-19	8.06114	99.04652	Pakasai	Nuea Khlong	Krabi	1.11	1.11
300	PTO-62-157	CHINDA THAPSAI	Block A	04-03-19	8.12064	99.15561	Phela	Khlong Thom	Krabi	2.11	0.48
			Block B	04-03-19	8.11906	99.15611	Phela	Khlong Thom	Krabi	2.20	0.64
			Block C	04-03-19	8.12284	99.16307	Phela	Khlong Thom	Krabi	2.20	2.12
			Block D	04-03-19	8.10822	99.13734	Phela	Khlong Thom	Krabi	0.94	0.94
301	PTO-62-158	CHIRASAK KAEOLUK	Block A	04-03-19	8.09619	99.12438	Phela	Khlong Thom	Krabi	1.67	1.67
302	PTO-62-159	CHALOEM SANITUAONG	Block A	04-03-19	8.08556	99.12355	Phela	Khlong Thom	Krabi	2.92	2.92
303	PTO-62-160	CHATRI CHUMANEE	Block A	04-03-19	8.12739	99.17815	Phela	Khlong Thom	Krabi	4.03	4.03
			Block B	04-03-19	8.11353	99.13943	Phela	Khlong Thom	Krabi	1.98	1.98
			Block C	04-03-19	8.11096	99.13997	Phela	Khlong Thom	Krabi	1.72	1.72
			Block D	04-03-19	8.11353	99.14228	Phela	Khlong Thom	Krabi	1.03	1.03
			Block E	04-03-19	8.14396	99.1477	Phela	Khlong Thom	Krabi	1.29	1.29
304	PTO-62-161	CHATREE SRIMUANG	Block A	04-03-19	8.10775	99.12886	Phela	Khlong Thom	Krabi	0.82	0.82
305	PTO-62-162	CHAMNAN KAEWMANEE	Block A	04-03-19	8.13316	99.16441	Phela	Khlong Thom	Krabi	2.15	2.15
			Block B	04-03-19	8.13329	99.16297	Phela	Khlong Thom	Krabi	1.70	1.52
306	PTO-62-163	CHUTIMA KAEOLUK	Block A	04-03-19	8.14988	99.15674	Phela	Khlong Thom	Krabi	5.56	2.88
307	PTO-62-165	THITIPONG SIRIPHAKYOTHAI	Block A	04-03-19	8.13137	99.14910	Phela	Khlong Thom	Krabi	3.12	3.12
			Block B	04-03-19	8.13698	99.17477	Phela	Khlong Thom	Krabi	4.00	2.56
308	PTO-62-167	NARONG SRITHONG	Block A	04-03-19	8.11757	99.17690	Phela	Khlong Thom	Krabi	2.56	2.56



**BUREAU  
VERITAS**

309	PTO-62-168	NATTHAPONG TONGCHUAI	Block A	04-03-19	8.14631	99.14899	Phela	Khlong Thom	Krabi	2.36	2.36
310	PTO-62-170	TUEANCHAI LUENAM	Block A	04-03-19	8.13279	99.16009	Phela	Khlong Thom	Krabi	2.46	2.46
311	PTO-62-171	THANAWEE SRIMUEANG	Block A	04-03-19	8.13383	99.13819	Phela	Khlong Thom	Krabi	4.02	2.72
312	PTO-62-172	TANAKORN PETSUK	Block A	04-03-19	8.15747	99.15848	Phela	Khlong Thom	Krabi	4.49	4.33
			Block B	04-03-19	8.11753	99.1415	Phela	Khlong Thom	Krabi	1.37	1.33
			Block C	04-03-19	8.12088	99.15049	Phela	Khlong Thom	Krabi	1.80	1.80
313	PTO-62-173	THAWATCHAI KAEOLUK	Block A	04-03-19	8.1451	99.1584	Phela	Khlong Thom	Krabi	2.58	2.58
314	PTO-62-174	TEERACHAI BUNSIT	Block A	04-03-19	8.08397	99.16457	Phela	Khlong Thom	Krabi	6.87	6.87
315	PTO-62-175	THIRA SUEPWISET	Block A	04-03-19	8.07771	99.13773	Phela	Khlong Thom	Krabi	2.79	2.79
			Block B	04-03-19	8.16380	99.18528	Phela	Khlong Thom	Krabi	4.63	4.47
			Block C	04-03-19	8.13663	99.21323	Phru Din Na	Khlong Thom	Krabi	5.60	5.60
316	PTO-62-177	NOPHALAK SRIMUANG	Block A	04-03-19	8.10658	99.12875	Phela	Khlong Thom	Krabi	2.22	2.22
			Block B	04-03-19	8.09870	99.12015	Phela	Khlong Thom	Krabi	1.48	1.48
317	PTO-62-178	NUAM SIMUEANG	Block A	04-03-19	8.11693	99.14388	Phela	Khlong Thom	Krabi	2.09	1.77
318	PTO-62-179	NAREERAT SRITHONG	Block A	04-03-19	8.11945	99.16291	Phela	Khlong Thom	Krabi	8.74	8.00
			Block B	04-03-19	8.12097	99.16134	Phela	Khlong Thom	Krabi	3.19	3.19
319	PTO-62-180	NIKON THAPTHIMMUEANG	Block A	04-03-19	8.11771	99.13861	Phela	Khlong Thom	Krabi	1.69	1.45
			Block B	04-03-19	8.11578	99.13698	Phela	Khlong Thom	Krabi	0.99	0.99
			Block C	04-03-19	8.12217	99.13947	Phela	Khlong Thom	Krabi	1.02	0.24



**BUREAU  
VERITAS**

			Block D	04-03-19	8.14422	99.13415	Phela	Khlong Thom	Krabi	2.19	2.19
320	PTO-62-181	NITTAYA CHUMANI	Block A	04-03-19	8.12458	99.13847	Phela	Khlong Thom	Krabi	2.17	2.01
321	PTO-62-182	NIPHON LOMKONGKAEW	Block A	04-03-19	8.13643	99.13244	Phela	Khlong Thom	Krabi	8.49	7.49
			Block B	04-03-19	8.13481	99.13244	Phela	Khlong Thom	Krabi	1.90	1.90
322	PTO-62-184	NIAM ONCHAN	Block A	04-03-19	8.10366	99.13787	Phela	Khlong Thom	Krabi	1.03	1.03
323	PTO-62-185	BUNTHIP SITHONG	Block A	04-03-19	8.11819	99.16123	Phela	Khlong Thom	Krabi	0.73	0.73
			Block B	04-03-19	8.11817	99.15922	Phela	Khlong Thom	Krabi	3.42	3.42
324	PTO-62-186	BUNLUE PIAKBUT	Block A	04-03-19	8.14572	99.18276	Phela	Khlong Thom	Krabi	4.16	4.16
			Block B	04-03-19	8.14109	99.18524	Phela	Khlong Thom	Krabi	5.28	5.28
325	PTO-62-187	BUNSROEM SRIMUEANG	Block A	04-03-19	8.13103	99.13307	Phela	Khlong Thom	Krabi	0.80	0.80
326	PTO-62-188	BUNSIAN CHUMANI	Block A	04-03-19	8.11691	99.14713	Phela	Khlong Thom	Krabi	1.61	1.61
			Block B	04-03-19	8.16373	99.16397	Phela	Khlong Thom	Krabi	4.48	4.48
327	PTO-62-189	BUPPHACHATI SITHONG	Block A	04-03-19	8.13589	99.15937	Phela	Khlong Thom	Krabi	1.22	1.22
328	PTO-62-190	PRAKHONG AENGCHUAN	Block A	04-03-19	8.14289	99.12345	Phela	Khlong Thom	Krabi	3.46	2.94
329	PTO-62-191	PRADIDSAK SRIMUEANG	Block A	04-03-19	8.15344	99.14473	Phela	Khlong Thom	Krabi	4.09	4.09
			Block B	04-03-19	8.15083	99.1537	Phela	Khlong Thom	Krabi	3.87	2.64
			Block C	04-03-19	8.15967	99.14421	Phela	Khlong Thom	Krabi	2.72	2.72
330	PTO-62-192	PRAPHAN KAEOMANI	Block A	04-03-19	8.11156	99.13464	Phela	Khlong Thom	Krabi	3.32	3.20
			Block B	04-03-19	8.14034	99.12558	Phela	Khlong Thom	Krabi	1.92	1.92



**BUREAU  
VERITAS**

			Block C	04-03-19	8.14061	99.12491	Phela	Khlong Thom	Krabi	0.59	0.59
331	PTO-62-193	PRAPHAH SRITHONG	Block A	04-03-19	8.11619	99.15441	Phela	Khlong Thom	Krabi	1.96	1.96
332	PTO-62-194	PRAMUK THONGTHIP	Block A	04-03-19	8.12064	99.15773	Phela	Khlong Thom	Krabi	2.78	2.62
333	PTO-62-195	PRAYUN THAPTHIMMUEANG	Block A	04-03-19	8.14480	99.12758	Phela	Khlong Thom	Krabi	3.56	3.56
			Block B	04-03-19	8.12476	99.13066	Phela	Khlong Thom	Krabi	2.56	2.56
334	PTO-62-196	PRASAN KHIAONOI	Block A	04-03-19	8.12353	99.16502	Phela	Khlong Thom	Krabi	3.21	2.33
335	PTO-62-197	PRASOET THAPTHIMMUEANG	Block A	04-03-19	8.11852	99.14482	Phela	Khlong Thom	Krabi	0.75	0.59
336	PTO-62-198	PRAYAD BUNSIT	Block A	04-03-19	8.09777	99.15657	Phela	Khlong Thom	Krabi	6.07	3.68
			Block B	04-03-19	8.13343	99.15117	Phela	Khlong Thom	Krabi	2.71	2.40
337	PTO-62-199	PRANEE THAPSAI	Block A	04-03-19	8.10098	99.13812	Phela	Khlong Thom	Krabi	2.02	1.38
			Block B	04-03-19	8.09788	99.13289	Phela	Khlong Thom	Krabi	1.68	0.80
338	PTO-62-200	PREECHA SORNJANTHO	Block A	04-03-19	8.12476	99.16694	Phela	Khlong Thom	Krabi	2.68	2.68
339	PTO-62-201	PRICHA AENGCHUAN	Block A	04-03-19	8.11394	99.15137	Phela	Khlong Thom	Krabi	1.20	1.20
			Block B	04-03-19	8.11398	99.15276	Phela	Khlong Thom	Krabi	4.81	4.81
			Block C	04-03-19	8.1014	99.16872	Phela	Khlong Thom	Krabi	2.98	2.98
340	PTO-62-203	BAN SRIMUEANG	Block A	04-03-19	8.11463	99.13587	Phela	Khlong Thom	Krabi	0.72	0.72
341	PTO-62-204	PHANOM KAECHUEA	Block A	04-03-19	8.10601	99.14399	Phela	Khlong Thom	Krabi	1.05	1.05
			Block B	04-03-19	8.10958	99.13594	Phela	Khlong Thom	Krabi	3.10	3.10
			Block C	04-03-19	8.10162	99.13207	Phela	Khlong Thom	Krabi	1.12	1.12



**BUREAU  
VERITAS**

342	PTO-62-206	PIMON THONGTIP	Block A	04-03-19	8.11162	99.15157	Phela	Khlong Thom	Krabi	1.23	1.23
			Block B	04-03-19	8.11491	99.15055	Phela	Khlong Thom	Krabi	3.77	3.37
343	PTO-62-207	PISANU KAEOLUK	Block A	04-03-19	8.14817	99.16871	Phela	Khlong Thom	Krabi	8.50	5.30
344	PTO-62-208	PHUM CHUMANEE	Block A	04-03-19	8.12629	99.15135	Phela	Khlong Thom	Krabi	3.44	3.44
345	PTO-62-209	POOLSAK HONGJAROEN	Block A	04-03-19	8.12987	99.15479	Phela	Khlong Thom	Krabi	3.09	3.09
346	PTO-62-210	PHAIBOON THAPTHIMMUEANG	Block A	04-03-19	8.11802	99.13924	Phela	Khlong Thom	Krabi	2.51	2.03
			Block B	04-03-19	8.13542	99.13869	Phela	Khlong Thom	Krabi	2.24	2.24
347	PTO-62-211	MONRUEDEE KHONGPHAKDEE	Block A	04-03-19	8.08679	99.15155	Phela	Khlong Thom	Krabi	2.23	2.23
348	PTO-62-212	MONRUDEE BOONMANEE	Block A	04-03-19	8.11433	99.14893	Phela	Khlong Thom	Krabi	0.97	0.81
349	PTO-62-213	MANGKON THAPTHIMMUEANG	Block A	04-03-19	8.12810	99.14675	Phela	Khlong Thom	Krabi	5.21	4.17
			Block B	04-03-19	8.14011	99.14036	Phela	Khlong Thom	Krabi	2.41	2.41
			Block C	04-03-19	8.12413	99.14542	Phela	Khlong Thom	Krabi	0.63	0.63
			Block D	04-03-19	8.10490	99.13938	Phela	Khlong Thom	Krabi	1.59	1.59
			Block E	04-03-19	8.14121	99.13710	Phela	Khlong Thom	Krabi	5.76	5.76
350	PTO-62-214	MANOP TUBTIMMUANG	Block A	04-03-19	8.11049	99.13584	Phela	Khlong Thom	Krabi	0.40	0.40
			Block B	04-03-19	8.11486	99.13416	Phela	Khlong Thom	Krabi	1.51	1.51
			Block C	04-03-19	8.11567	99.14166	Phela	Khlong Thom	Krabi	1.15	1.15
351	PTO-62-215	METHA CHUMANI	Block A	04-03-19	8.11121	99.15767	Phela	Khlong Thom	Krabi	0.50	0.50
			Block B	04-03-19	8.10962	99.1617	Phela	Khlong Thom	Krabi	2.73	1.93



**BUREAU  
VERITAS**

			Block C	04-03-19	8.11104	99.16467	Phela	Khlong Thom	Krabi	3.08	3.08
			Block D	04-03-19	8.11146	99.15873	Phela	Khlong Thom	Krabi	3.99	3.19
352	PTO-62-216	YOT SRIMUEANG	Block A	04-03-19	8.09907	99.14587	Phela	Khlong Thom	Krabi	1.32	1.32
			Block B	04-03-19	8.10858	99.13487	Phela	Khlong Thom	Krabi	2.21	2.21
			Block C	04-03-19	8.11393	99.13580	Phela	Khlong Thom	Krabi	0.67	0.67
			Block D	04-03-19	8.13295	99.13083	Phela	Khlong Thom	Krabi	1.79	1.79
353	PTO-62-217	RADCHANOK THUMTIMMUNG	Block A	04-03-19	8.14695	99.13598	Phela	Khlong Thom	Krabi	8.16	8.16
354	PTO-62-218	RATCHANAPORN ROTPHAI	Block A	04-03-19	8.11181	99.16895	Phela	Khlong Thom	Krabi	6.04	6.04
			Block B	04-03-19	8.10804	99.14524	Phela	Khlong Thom	Krabi	1.16	0.88
			Block C	04-03-19	8.10832	99.14372	Phela	Khlong Thom	Krabi	0.35	0.35
			Block D	04-03-19	8.12610	99.13371	Phela	Khlong Thom	Krabi	1.54	1.54
			Block E	04-03-19	8.11102	99.13789	Phela	Khlong Thom	Krabi	1.39	1.23
			Block F	04-03-19	8.11115	99.16624	Phela	Khlong Thom	Krabi	3.36	3.36
			Block G	04-03-19	8.16426	99.15637	Phela	Khlong Thom	Krabi	8.00	5.16
355	PTO-62-219	LABAI SUEPPHAN	Block A	04-03-19	8.12582	99.15828	Phela	Khlong Thom	Krabi	0.88	0.88
356	PTO-62-220	LAMOM KAEOSUK	Block A	04-03-19	8.12376	99.15804	Phela	Khlong Thom	Krabi	3.52	2.72
			Block B	04-03-19	8.13097	99.15837	Phela	Khlong Thom	Krabi	3.33	3.33
357	PTO-62-221	LAMAI THIPSURAT	Block A	04-03-19	8.13013	99.15644	Phela	Khlong Thom	Krabi	1.33	1.33
358	PTO-62-222	LAMAI SAENGPHEI	Block A	04-03-19	8.09629	99.13197	Phela	Khlong Thom	Krabi	3.14	3.06





**BUREAU  
VERITAS**

359	PTO-62-223	LAKKHANA AENGCHUAN	Block A	04-03-19	8.10124	99.13415	Phela	Khlong Thom	Krabi	1.37	1.37
			Block B	04-03-19	8.10383	99.12531	Phela	Khlong Thom	Krabi	8.11	5.09
360	PTO-62-224	LAMYONG SRINGAM	Block A	04-03-19	8.08069	99.13305	Phela	Khlong Thom	Krabi	1.00	1.00
			Block B	04-03-19	8.11252	99.17403	Phela	Khlong Thom	Krabi	2.41	2.41
			Block C	04-03-19	8.11280	99.14908	Phela	Khlong Thom	Krabi	2.84	2.84
			Block D	04-03-19	8.11375	99.14843	Phela	Khlong Thom	Krabi	0.70	0.70
			Block E	04-03-19	8.08176	99.13335	Phela	Khlong Thom	Krabi	0.87	0.87
361	PTO-62-225	LIAO NAKSAWAT	Block A	04-03-19	8.13054	99.13896	Phela	Khlong Thom	Krabi	1.25	0.93
			Block B	04-03-19	8.12965	99.13409	Phela	Khlong Thom	Krabi	4.00	1.16
			Block C	04-03-19	8.13272	99.13172	Phela	Khlong Thom	Krabi	1.44	1.44
362	PTO-62-227	WACHET KAEOLook	Block A	04-03-19	8.11512	99.13265	Phela	Khlong Thom	Krabi	2.42	2.38
363	PTO-62-228	VARUNYA PRUTOEY	Block A	04-03-19	8.14385	99.16342	Phela	Khlong Thom	Krabi	8.00	8.00
364	PTO-62-229	WARAPORN SAEUN	Block A	04-03-19	8.10727	99.15934	Phela	Khlong Thom	Krabi	4.80	4.80
365	PTO-62-230	WARISARA ENGCHUAN	Block A	04-03-19	8.14461	99.15933	Phela	Khlong Thom	Krabi	0.55	0.39
			Block B	04-03-19	8.14517	99.17050	Phela	Khlong Thom	Krabi	6.11	6.11
366	PTO-62-231	WATSANA CHUMANI	Block A	04-03-19	8.11477	99.14137	Phela	Khlong Thom	Krabi	2.49	1.44
			Block B	04-03-19	8.12878	99.13935	Phela	Khlong Thom	Krabi	1.75	1.75
367	PTO-62-232	WIRA SONRIN	Block A	04-03-19	8.12310	99.16800	Phela	Khlong Thom	Krabi	3.14	3.14
			Block B	04-03-19	8.11577	99.14396	Phela	Khlong Thom	Krabi	1.34	1.34



**BUREAU  
VERITAS**

			Block C	04-03-19	8.13206	99.15034	Phela	Khlong Thom	Krabi	0.93	0.93
368	PTO-62-233	WIRATH KAECHUEA	Block A	04-03-19	8.10759	99.15551	Phela	Khlong Thom	Krabi	3.96	3.80
			Block B	04-03-19	8.09875	99.13717	Phela	Khlong Thom	Krabi	1.43	1.43
			Block c	04-03-19	8.0988	99.1395	Phela	Khlong Thom	Krabi	5.31	5.31
369	PTO-62-234	WILAILAK CHANAKUN	Block A	04-03-19	8.11927	99.13971	Phela	Khlong Thom	Krabi	2.73	2.49
			Block B	04-03-19	8.11920	99.14144	Phela	Khlong Thom	Krabi	0.96	0.64
			Block C	04-03-19	8.11959	99.12212	Phela	Khlong Thom	Krabi	0.64	0.64
			Block D	04-03-19	8.14305	99.13333	Phela	Khlong Thom	Krabi	4.20	3.08
			Block E	04-03-19	8.14856	99.13453	Phela	Khlong Thom	Krabi	2.40	2.40
			Block F	04-03-19	8.14453	99.12618	Phela	Khlong Thom	Krabi	2.44	2.44
			Block G	04-03-19	7.97335	99.19788	Khlong Thom Tai	Khlong Thom	Krabi	1.92	1.92
			Block H	04-03-19	8.02580	99.24474	Phru Din Na	Khlong Thom	Krabi	3.12	3.12
			Block I	04-03-19	8.02942	99.22784	Phru Din Na	Khlong Thom	Krabi	0.41	0.24
370	PTO-62-235	VISSARUT VUTTISAK	Block A	04-03-19	8.08744	99.15767	Phela	Khlong Thom	Krabi	1.47	0.94
			Block B	04-03-19	8.11539	99.15319	Phela	Khlong Thom	Krabi	2.15	2.15
			Block C	04-03-19	8.08574	99.15582	Phela	Khlong Thom	Krabi	2.65	2.24
371	PTO-62-236	WET SRISONGKHRAM	Block A	04-03-19	8.13134	99.13867	Phela	Khlong Thom	Krabi	1.34	1.34
			Block B	04-03-19	8.12532	99.14218	Phela	Khlong Thom	Krabi	0.88	0.88
372	PTO-62-237	SARUNCHAI THONGTIP	Block A	04-03-19	8.11648	99.17947	Phela	Khlong Thom	Krabi	3.53	3.53



**BUREAU  
VERITAS**

373	PTO-62-238	SRICHAJ DUANGTHONG	Block A	04-03-19	8.10810	99.12745	Phela	Khlong Thom	Krabi	2.40	2.40
374	PTO-62-239	SISOMCHAI AENGCHUAN	Block A	04-03-19	8.12418	99.16240	Phela	Khlong Thom	Krabi	2.36	2.36
			Block B	04-03-19	8.12199	99.14230	Phela	Khlong Thom	Krabi	4.96	4.96
			Block C	04-03-19	8.13560	99.15717	Phela	Khlong Thom	Krabi	2.40	2.40
			Block D	04-03-19	8.15188	99.17986	Phela	Khlong Thom	Krabi	9.03	5.76
			Block E	04-03-19	8.15111	99.13503	Phela	Khlong Thom	Krabi	7.20	4.48
			Block F	04-03-19	8.15497	99.18245	Phela	Khlong Thom	Krabi	1.60	1.60
			Block G	04-03-19	8.15135	99.17610	Phela	Khlong Thom	Krabi	4.54	4.54
375	PTO-62-240	SRISOMCHAI AENGCHUAN	Block A	04-03-19	8.12699	99.16286	Phela	Khlong Thom	Krabi	3.20	3.20
			Block B	04-03-19	8.12596	99.16341	Phela	Khlong Thom	Krabi	5.60	5.60
			Block C	04-03-19	8.12317	99.16021	Phela	Khlong Thom	Krabi	3.80	2.32
			Block D	04-03-19	8.13692	99.18122	Phela	Khlong Thom	Krabi	2.72	2.72
376	PTO-62-241	SIAOPHAK KAEORAT	Block A	04-03-19	8.09904	99.14334	Phela	Khlong Thom	Krabi	3.77	2.57
			Block B	04-03-19	8.10747	99.1415	Phela	Khlong Thom	Krabi	1.59	1.59
377	PTO-62-242	SUPPHACHAI SUEPWISET	Block A	04-03-19	8.12586	99.18620	Phela	Khlong Thom	Krabi	6.40	6.40
378	PTO-62-243	SUPHACHAI KHIAONOI	Block A	04-03-19	8.10939	99.15759	Phela	Khlong Thom	Krabi	3.37	2.08
379	PTO-62-244	SOMKHIT SOMPAEN	Block A	04-03-19	8.13772	99.16748	Phela	Khlong Thom	Krabi	4.00	4.00
380	PTO-62-245	SOMCHIT THAPTHIMMUEANG	Block A	04-03-19	8.11187	99.14507	Phela	Khlong Thom	Krabi	0.64	0.64
			Block B	04-03-19	8.12603	99.12984	Phela	Khlong Thom	Krabi	3.68	3.68



**BUREAU  
VERITAS**

381	PTO-62-246	SOMTHOB THONGTHIP	Block A	04-03-19	8.11674	99.15332	Phela	Khlong Thom	Krabi	2.56	2.40
			Block B	04-03-19	8.11448	99.15714	Phela	Khlong Thom	Krabi	3.66	2.96
382	PTO-62-247	SOMSONG KONGKAE	Block A	04-03-19	8.12005	99.17819	Phela	Khlong Thom	Krabi	3.20	3.20
			Block B	04-03-19	8.11975	99.17416	Phela	Khlong Thom	Krabi	4.00	4.00
			Block C	04-03-19	8.11516	99.14289	Phela	Khlong Thom	Krabi	1.52	0.88
			Block D	04-03-19	8.13385	99.13180	Phela	Khlong Thom	Krabi	1.71	1.71
383	PTO-62-248	SOMBUN THONGTHIP	Block A	04-03-19	8.15605	99.16823	Phela	Khlong Thom	Krabi	9.12	8.12
384	PTO-62-249	SOMPORN CHOOMANE	Block A	04-03-19	8.12862	99.12643	Phela	Khlong Thom	Krabi	10.27	10.27
			Block B	04-03-19	8.11511	99.14006	Phela	Khlong Thom	Krabi	1.67	1.67
			Block C	04-03-19	8.11307	99.14023	Phela	Khlong Thom	Krabi	3.43	2.63
			Block D	04-03-19	8.10388	99.13359	Phela	Khlong Thom	Krabi	0.14	0.10
385	PTO-62-251	SOMPAT BOOTSUT	Block A	04-03-19	8.12049	99.16842	Phela	Khlong Thom	Krabi	5.44	4.00
			Block B	04-03-19	8.11673	99.15538	Phela	Khlong Thom	Krabi	2.11	2.07
386	PTO-62-252	SOMMAT KHIAONOI	Block A	04-03-19	8.11724	99.13666	Phela	Khlong Thom	Krabi	4.50	3.36
387	PTO-62-253	SOMMAT THONGTHIP	Block A	04-03-19	8.12220	99.15589	Phela	Khlong Thom	Krabi	1.23	1.23
			Block B	04-03-19	8.11594	99.13443	Phela	Khlong Thom	Krabi	1.46	1.46
388	PTO-62-254	SOMSAK CHIAOKOK	Block A	04-03-19	8.16422	99.18130	Phela	Khlong Thom	Krabi	1.31	1.31
			Block B	04-03-19	8.17073	99.18931	Phela	Khlong Thom	Krabi	6.40	6.40
			Block C	04-03-19	8.17084	99.18652	Phela	Khlong Thom	Krabi	3.52	3.52



**BUREAU  
VERITAS**

389	PTO-62-255	SOMSAK LOOKKAEW	Block A	04-03-19	8.10595	99.12404	Phela	Khlong Thom	Krabi	3.23	3.07
390	PTO-62-257	SAKORN EANLENG	Block A	04-03-19	8.11271	99.14531	Phela	Khlong Thom	Krabi	1.75	1.71
			Block B	04-03-19	8.14881	99.18282	Phela	Khlong Thom	Krabi	2.97	2.97
			Block C	04-03-19	8.13208	99.14593	Phela	Khlong Thom	Krabi	0.30	0.30
			Block D	04-03-19	8.11492	99.13755	Phela	Khlong Thom	Krabi	1.45	0.65
			Block E	04-03-19	8.14903	99.18382	Phela	Khlong Thom	Krabi	2.95	2.95
			Block F	04-03-19	8.1477	99.18583	Phela	Khlong Thom	Krabi	1.60	1.60
391	PTO-62-258	SAKIT SRIMUEANG	Block A	04-03-19	8.12169	99.12871	Phela	Khlong Thom	Krabi	1.62	1.62
			Block B	04-03-19	8.11965	99.13218	Phela	Khlong Thom	Krabi	0.83	0.56
			Block C	04-03-19	8.03853	99.05732	Pakasai	Nuea Khlong	Krabi	1.44	1.44
			Block D	04-03-19	8.05536	99.06219	Khok Yang	Nuea Khlong	Krabi	0.81	0.81
392	PTO-62-260	SAMRONG ROTPHAI	Block A	04-03-19	8.09417	99.13229	Phela	Khlong Thom	Krabi	3.30	0.76
			Block B	04-03-19	8.10931	99.14537	Phela	Khlong Thom	Krabi	0.60	0.60
			Block C	04-03-19	8.10913	99.14369	Phela	Khlong Thom	Krabi	1.18	1.18
393	PTO-62-261	SAMRAN SUEPWISET	Block A	04-03-19	8.08495	99.14307	Phela	Khlong Thom	Krabi	1.98	1.98
			Block B	04-03-19	8.08618	99.14274	Phela	Khlong Thom	Krabi	1.09	0.93
394	PTO-62-263	SUKIT BUNMANEE	Block A	04-03-19	8.13305	99.1668	Phela	Khlong Thom	Krabi	3.80	1.68
			Block B	04-03-19	8.12337	99.15105	Phela	Khlong Thom	Krabi	2.38	2.38
			Block C	04-03-19	8.12311	99.14612	Phela	Khlong Thom	Krabi	1.05	1.05



**BUREAU  
VERITAS**

395	PTO-62-264	SUCHITRA THIPSURAT	Block A	04-03-19	8.12927	99.16195	Phela	Khlong Thom	Krabi	3.17	3.17
			Block B	04-03-19	8.13141	99.15986	Phela	Khlong Thom	Krabi	1.81	1.65
			Block C	04-03-19	8.13890	99.15031	Phela	Khlong Thom	Krabi	2.92	2.92
396	PTO-62-265	SUTHAT BOONMANEE	Block A	04-03-19	8.11271	99.14610	Phela	Khlong Thom	Krabi	1.32	1.00
			Block B	04-03-19	8.13624	99.16494	Phela	Khlong Thom	Krabi	4.94	2.08
			Block C	04-03-19	8.13578	99.16771	Phela	Khlong Thom	Krabi	4.03	2.40
			Block D	04-03-19	8.07941	99.13679	Phela	Khlong Thom	Krabi	2.39	2.39
			Block E	04-03-19	8.08503	99.15097	Phela	Khlong Thom	Krabi	1.47	1.47
			Block F	04-03-19	8.12994	99.15605	Phela	Khlong Thom	Krabi	1.60	1.60
397	PTO-62-266	SUPRAKAN SRIMUEANG	Block A	04-03-19	8.12396	99.13299	Phela	Khlong Thom	Krabi	1.55	1.55
			Block B	04-03-19	8.11626	99.13499	Phela	Khlong Thom	Krabi	2.10	2.10
398	PTO-62-268	SUPHANSA THUBTHIMMUANG	Block A	04-03-19	8.13674	99.15113	Phela	Khlong Thom	Krabi	1.75	1.75
			Block B	04-03-19	8.11285	99.14317	Phela	Khlong Thom	Krabi	1.53	1.37
399	PTO-62-269	SUPATCHAI CHANGKID	Block A	04-03-19	8.09822	99.14141	Phela	Khlong Thom	Krabi	4.28	3.80
400	PTO-62-270	SUPIN SRIMOUNG	Block A	04-03-19	8.15226	99.15561	Phela	Khlong Thom	Krabi	8.00	4.00
			Block B	04-03-19	8.15165	99.15806	Phela	Khlong Thom	Krabi	0.80	0.80
401	PTO-62-271	SUPHENNEE KAEOPHENG	Block A	04-03-19	8.10691	99.15028	Phela	Khlong Thom	Krabi	3.88	3.04
402	PTO-62-272	SURAKIT SIMUEANG	Block A	04-03-19	8.15331	99.15435	Phela	Khlong Thom	Krabi	1.37	1.37
			Block B	04-03-19	8.15281	99.14690	Phela	Khlong Thom	Krabi	4.20	4.20



**BUREAU  
VERITAS**

403	PTO-62-273	SUREERAT SRIMUEANG	Block A	04-03-19	8.13201	99.13795	Phela	Khlong Thom	Krabi	3.10	3.10
			Block B	04-03-19	8.13429	99.12812	Phela	Khlong Thom	Krabi	2.22	2.22
404	PTO-62-274	SEKSAN BOONMANEE	Block A	04-03-19	8.13795	99.16510	Phela	Khlong Thom	Krabi	4.12	1.60
			Block B	04-03-19	8.11540	99.14857	Phela	Khlong Thom	Krabi	1.86	1.70
			Block C	04-03-19	8.10453	99.13707	Phela	Khlong Thom	Krabi	0.42	0.42
405	PTO-62-275	SOPA AENGCHUAN	Block A	04-03-19	8.11604	99.15721	Phela	Khlong Thom	Krabi	0.93	0.93
406	PTO-62-276	NUCHIAM KAEOPHENG	Block A	04-03-19	8.12601	99.13577	Phela	Khlong Thom	Krabi	2.73	2.73
			Block B	04-03-19	8.12979	99.14021	Phela	Khlong Thom	Krabi	1.35	1.35
			Block C	04-03-19	8.13269	99.14013	Phela	Khlong Thom	Krabi	1.56	1.56
407	PTO-62-277	NUCHIAM THAPTHAI	Block A	04-03-19	8.10626	99.13928	Phela	Khlong Thom	Krabi	1.32	1.00
			Block B	04-03-19	8.11221	99.13704	Phela	Khlong Thom	Krabi	0.77	0.77
			Block C	04-03-19	8.11048	99.12351	Phela	Khlong Thom	Krabi	2.77	1.65
408	PTO-62-278	ANURAK TABTIMMUANG	Block A	04-03-19	8.11512	99.12205	Phela	Khlong Thom	Krabi	2.74	2.74
			Block B	04-03-19	8.08933	99.12458	Phela	Khlong Thom	Krabi	2.40	2.40
			Block C	04-03-19	8.08703	99.12955	Phela	Khlong Thom	Krabi	2.60	2.60
			Block D	04-03-19	8.09067	99.13233	Phela	Khlong Thom	Krabi	2.35	2.35
409	PTO-62-280	ANOTHAI SRIMUEANG	Block A	04-03-19	8.12187	99.13154	Phela	Khlong Thom	Krabi	2.81	2.81
			Block B	04-03-19	8.10707	99.10897	Phela	Khlong Thom	Krabi	4.03	4.03
			Block C	04-03-19	8.11840	99.08718	Khok Yang	Nuea Khlong	Krabi	1.27	1.27



**BUREAU  
VERITAS**

410	PTO-62-281	APHICHIT THONGNUEADI	Block A	04-03-19	8.08387	99.09362	Khok Yang	Nuea Khlong	Krabi	1.51	1.51
			Block B	04-03-19	8.10799	99.14663	Phela	Khlong Thom	Krabi	1.34	0.70
			Block C	04-03-19	8.12452	99.17113	Phela	Khlong Thom	Krabi	2.40	2.40
			Block D	04-03-19	8.11053	99.14585	Phela	Khlong Thom	Krabi	4.18	4.18
			Block E	04-03-19	8.08476	99.08495	Khok Yang	Nuea Khlong	Krabi	2.91	2.87
411	PTO-62-282	AMMARUT KEALOOK	Block A	04-03-19	8.10722	99.14175	Phela	Khlong Thom	Krabi	1.11	1.07
412	PTO-62-283	OUAN THAPTHIMMUEANG	Block A	04-03-19	8.13041	99.14996	Phela	Khlong Thom	Krabi	1.04	1.04
413	PTO-62-284	ARTHIT PHETSUK	Block A	04-03-19	8.10507	99.13648	Phela	Khlong Thom	Krabi	2.51	2.51
			Block B	04-03-19	8.10994	99.12090	Phela	Khlong Thom	Krabi	2.65	2.65
			Block C	04-03-19	8.10326	99.15949	Phela	Khlong Thom	Krabi	1.12	1.12
			Block D	04-03-19	8.11968	99.14697	Phela	Khlong Thom	Krabi	0.48	0.48
			Block E	04-03-19	8.13368	99.16756	Phela	Khlong Thom	Krabi	2.56	2.56
414	PTO-62-285	ARPORN AENGCHUAN	Block A	04-03-19	8.12469	99.16434	Phela	Khlong Thom	Krabi	2.21	2.21
			Block B	04-03-19	8.11603	99.15635	Phela	Khlong Thom	Krabi	1.09	1.09
415	PTO-62-286	ARREE SRIMUEANG	Block A	04-03-19	8.11835	99.12893	Phela	Khlong Thom	Krabi	1.78	1.78
416	PTO-62-287	AMNUAIPORN KHONGPHAKDEE	Block A	04-03-19	8.12309	99.15238	Phela	Khlong Thom	Krabi	4.80	4.80
			Block B	04-03-19	8.11932	99.15306	Phela	Khlong Thom	Krabi	2.10	2.06
417	PTO-62-288	U-DOMPORN EIANLENG	Block A	04-03-19	8.10586	99.14270	Phela	Khlong Thom	Krabi	0.80	0.80
			Block B	04-03-19	8.12306	99.13908	Phela	Khlong Thom	Krabi	1.15	1.15





**BUREAU  
VERITAS**

			Block C	04-03-19	8.12639	99.13922	Phela	Khlong Thom	Krabi	1.44	1.44
			Block D	04-03-19	8.13647	99.16367	Phela	Khlong Thom	Krabi	4.13	4.13
			Block E	04-03-19	8.14957	99.17966	Phela	Khlong Thom	Krabi	0.97	0.97
			Block F	04-03-19	8.06235	99.10081	Phela	Khlong Thom	Krabi	1.85	1.85
			Block G	04-03-19	8.11567	99.14614	Phela	Khlong Thom	Krabi	1.60	1.28
418	PTO-62-289	AUTHEN KAEWLUK	Block A	04-03-19	8.13125	99.14236	Phela	Khlong Thom	Krabi	2.48	2.48
			Block B	04-03-19	8.12169	99.16319	Phela	Khlong Thom	Krabi	3.15	3.15
419	PTO-62-290	AURAI SRITHONG	Block A	04-03-19	8.11021	99.16239	Phela	Khlong Thom	Krabi	4.37	4.37
420	PTO-62-292	OPA SRITHONG	Block A	04-03-19	8.12010	99.15951	Phela	Khlong Thom	Krabi	3.94	3.94
421	PTO-62-293	KORKAMON BOONMANEE	Block A	04-03-19	8.09280	99.07323	Khok Yang	Nuea Khlong	Krabi	1.79	1.79
			Block B	04-03-19	8.08418	99.08751	Khok Yang	Nuea Khlong	Krabi	0.73	0.64
			Block C	04-03-19	8.09887	99.10952	Khok Yang	Nuea Khlong	Krabi	3.57	3.24
			Block D	04-03-19	8.10227	99.10905	Khok Yang	Nuea Khlong	Krabi	2.56	2.24
422	PTO-62-294	KANHA MANION	Block A	04-03-19	8.25454	99.20322	Sinpun	Khao Phanom	Krabi	10.40	10.40
423	PTO-62-295	KITTITHUCH TUBTRAI	Block B	04-03-19	8.19567	99.16608	Pru Tiao	Khao Phanom	Krabi	1.60	1.60
424	PTO-62-296	KIARTIKON LONGLOI	Block A	04-03-19	8.08553	99.08241	Khok Yang	Nuea Khlong	Krabi	1.47	1.47
			Block B	04-03-19	8.10039	99.10814	Khok Yang	Nuea Khlong	Krabi	2.26	2.26
			Block C	04-03-19	8.11956	99.10116	Khok Yang	Nuea Khlong	Krabi	2.49	2.49
			Block D	04-03-19	8.11816	99.10158	Khok Yang	Nuea Khlong	Krabi	1.05	1.05



**BUREAU  
VERITAS**

			Block E	04-03-19	8.15633	99.12739	Khok Yang	Nuea Khlong	Krabi	4.80	4.80
425	PTO-62-297	KIATTSAK CHAIKHAO	Block A	04-03-19	8.19356	99.14961	Pru Tiao	Khao Phanom	Krabi	1.76	1.76
426	PTO-62-299	KARNTIMON UDOMSRI	Block A	04-03-19	8.19014	99.13619	Pru Tiao	Khao Phanom	Krabi	2.40	2.40
427	PTO-62-300	KOMON PHONDET	Block A	04-03-19	8.22365	99.15354	Pru Tiao	Khao Phanom	Krabi	2.40	2.40
			Block B	04-03-19	8.22347	99.12244	Pru Tiao	Khao Phanom	Krabi	7.15	7.15
428	PTO-62-302	KWANJAI PLUKMAIDEE	Block A	04-03-19	8.09488	99.10945	Phela	Khlong Thom	Krabi	4.00	4.00
429	PTO-62-303	JARAN BOONYARUN	Block A	04-03-19	8.17621	99.13484	Pru Tiao	Khao Phanom	Krabi	2.40	2.40
430	PTO-62-305	CHARIN CHAISAWAT	Block A	04-03-19	8.10423	99.13174	Phela	Khlong Thom	Krabi	2.52	2.52
431	PTO-62-306	JARUNG RUANGJARAT	Block A	04-03-19	8.20683	99.16808	Pru Tiao	Khao Phanom	Krabi	19.52	15.52
			Block B	04-03-19	8.20211	99.16684	Pru Tiao	Khao Phanom	Krabi	14.88	14.88
			Block C	04-03-19	8.21551	99.16874	Pru Tiao	Khao Phanom	Krabi	5.76	5.76
			Block D	04-03-19	8.20989	99.17292	Pru Tiao	Khao Phanom	Krabi	7.84	7.84
432	PTO-62-307	JARAY BURAPENG	Block A	04-03-19	8.17397	99.13593	Pru Tiao	Khao Phanom	Krabi	5.28	4.48
433	PTO-62-308	JANCHIRA THAPTHAI	Block A	04-03-19	8.18668	99.14201	Pru Tiao	Khao Phanom	Krabi	3.20	3.20
			Block B	04-03-19	8.18108	99.13232	Pru Tiao	Khao Phanom	Krabi	3.20	2.88
434	PTO-62-309	CHITTIPHONG BOONMANEE	Block A	04-03-19	8.11128	99.11262	Phela	Khlong Thom	Krabi	9.48	9.32
			Block B	04-03-19	8.12945	99.11079	Phela	Khlong Thom	Krabi	3.02	3.02
			Block C	04-03-19	8.16603	99.14966	Phela	Khlong Thom	Krabi	10.40	10.40
435	PTO-62-310	JIRAWADEE TUBTHRL	Block A	04-03-19	8.19723	99.16789	Pru Tiao	Khao Phanom	Krabi	2.56	2.56



**BUREAU  
VERITAS**

436	PTO-62-311	CHARUNE KAEOMANE	Block A	04-03-19	8.14125	99.12419	Phela	Khlong Thom	Krabi	2.56	2.56
			Block B	04-03-19	8.11589	99.12823	Phela	Khlong Thom	Krabi	5.32	3.40
			Block C	04-03-19	8.18630	99.15953	Pru Tiao	Khao Phanom	Krabi	1.44	1.44
437	PTO-62-312	JAI SRIMUEANG	Block A	04-03-19	8.12006	99.13085	Phela	Khlong Thom	Krabi	2.93	2.53
			Block B	04-03-19	8.12023	99.12821	Phela	Khlong Thom	Krabi	1.44	1.44
			Block C	04-03-19	8.12058	99.12939	Phela	Khlong Thom	Krabi	0.80	0.80
438	PTO-62-313	CHALAM KAEWKET	Block A	04-03-19	8.23892	99.12926	Pru Tiao	Khao Phanom	Krabi	1.87	1.87
			Block B	04-03-19	8.18222	99.13616	Pru Tiao	Khao Phanom	Krabi	7.36	7.36
			Block C	04-03-19	8.22758	99.13889	Pru Tiao	Khao Phanom	Krabi	4.86	4.86
			Block D	04-03-19	8.21440	99.15358	Pru Tiao	Khao Phanom	Krabi	3.04	3.04
439	PTO-62-314	CHAIORN TABTHAIR	Block A	04-03-19	8.17957	99.13197	Pru Tiao	Khao Phanom	Krabi	2.40	2.08
			Block B	04-03-19	8.18042	99.12965	Pru Tiao	Khao Phanom	Krabi	2.56	2.56
440	PTO-62-315	CHAIYOD CHANSUWAN	Block A	04-03-19	8.17704	99.12963	Pru Tiao	Khao Phanom	Krabi	1.12	1.12
441	PTO-62-316	CHIEWCHARN PRASOMSRI	Block A	04-03-19	8.15852	99.13300	Khok Yang	Nuea Khlong	Krabi	3.16	3.16
442	PTO-62-317	NANCHAPON BUTMIT	Block A	04-03-19	8.09241	99.08622	Khok Yang	Nuea Khlong	Krabi	2.79	1.12
			Block B	04-03-19	8.09118	99.12222	Phela	Khlong Thom	Krabi	0.80	0.80
443	PTO-62-319	THIPSUCHON BOONCHUAI	Block A	04-03-19	8.07506	99.12266	Phela	Khlong Thom	Krabi	13.30	13.30
444	PTO-62-320	THARATHON CHUENKLIN	Block A	04-03-19	8.16721	99.15122	Phela	Khlong Thom	Krabi	11.20	11.20
445	PTO-62-321	THAWISAK BUTMIT	Block A	04-03-19	8.09168	99.09818	Khok Yang	Nuea Khlong	Krabi	2.74	2.74



**BUREAU  
VERITAS**

446	PTO-62-322	THUNRADEE WIROTWANNAKUL	Block A	04-03-19	8.10539	99.11269	Phela	Khlong Thom	Krabi	3.20	3.20
			Block B	04-03-19	8.10032	99.10967	Khok Yang	Nuea Khlong	Krabi	6.56	6.40
			Block C	04-03-19	8.10218	99.11064	Phela	Khlong Thom	Krabi	0.32	0.32
447	PTO-62-323	THANTHAWAT THAPTHAI	Block A	04-03-19	8.17919	99.13575	Pru Tiao	Khao Phanom	Krabi	3.20	3.20
448	PTO-62-324	THIRAPHONG THAPTHIMMUEANG	Block A	04-03-19	8.07445	99.10913	Phela	Khlong Thom	Krabi	2.40	2.40
449	PTO-62-325	NAIYANA THAPSAI	Block A	04-03-19	8.17855	99.13583	Pru Tiao	Khao Phanom	Krabi	1.76	1.76
			Block B	04-03-19	8.18741	99.14305	Pru Tiao	Khao Phanom	Krabi	2.10	2.10
450	PTO-62-326	NIKHOM PHROMSRI	Block A	04-03-19	8.18019	99.14017	Pru Tiao	Khao Phanom	Krabi	3.20	3.20
451	PTO-62-327	NITTAYA TUPCHSAI	Block A	04-03-19	8.19966	99.16118	Pru Tiao	Khao Phanom	Krabi	7.52	7.52
452	PTO-62-328	NIPA ENGCHUAN	Block A	04-03-19	8.10246	99.12959	Phela	Khlong Thom	Krabi	3.57	3.36
453	PTO-62-330	BANCHA KAEOLUK	Block A	04-03-19	8.10397	99.13325	Phela	Khlong Thom	Krabi	0.99	0.91
			Block B	04-03-19	8.10777	99.12321	Phela	Khlong Thom	Krabi	3.06	3.02
454	PTO-62-332	BUNRIANG PHETCHAWANG	Block A	04-03-19	8.09225	99.15401	Phela	Khlong Thom	Krabi	2.75	1.76
			Block B	04-03-19	8.11339	99.12210	Phela	Khlong Thom	Krabi	2.78	2.78
			Block C	04-03-19	8.08940	99.12681	Phela	Khlong Thom	Krabi	2.08	2.08
455	PTO-62-334	PLONG KAEOMANI	Block A	04-03-19	8.13117	99.12678	Phela	Khlong Thom	Krabi	2.49	2.41
			Block B	04-03-19	8.12884	99.1333	Phela	Khlong Thom	Krabi	1.16	1.16
456	PTO-62-335	PRAKHUAN LIMKHAM	Block A	04-03-19	8.12810	99.13131	Phela	Khlong Thom	Krabi	0.80	0.80
457	PTO-62-336	PRAPIN RAKSAYOD	Block A	04-03-19	8.10307	99.12073	Phela	Khlong Thom	Krabi	4.51	4.51



**BUREAU  
VERITAS**

458	PTO-62-337	PRASIT PAOMSREE	Block A	04-03-19	8.17474	99.13137	Pru Tiao	Khao Phanom	Krabi	1.20	1.20
459	PTO-62-338	PRASIT MANEMAI	Block A	04-03-19	8.12954	99.13053	Phela	Khlong Thom	Krabi	2.76	2.76
460	PTO-62-339	PRANOM SENAMIT	Block A	04-03-19	8.16248	99.12639	Khok Yang	Nuea Khlong	Krabi	6.56	6.56
461	PTO-62-340	PARIMART KRAIJARUS	Block A	04-03-19	8.14064	99.10957	Khok Yang	Nuea Khlong	Krabi	13.60	8.64
462	PTO-62-341	PANISARA KONGPUKDEE	Block A	04-03-19	8.21787	99.15297	Pru Tiao	Khao Phanom	Krabi	4.80	2.88
463	PTO-62-342	PLUEAN KAEOMANEE	Block A	04-03-19	8.12343	99.1366	Phela	Khlong Thom	Krabi	1.89	1.08
464	PTO-62-343	PHONGSI THONGTHIP	Block A	04-03-19	8.05066	99.07825	Khok Yang	Nuea Khlong	Krabi	3.16	3.16
			Block B	04-03-19	8.06961	99.10373	Khok Yang	Nuea Khlong	Krabi	2.40	2.40
			Block C	04-03-19	8.06416	99.08032	Khok Yang	Nuea Khlong	Krabi	1.44	1.40
465	PTO-62-344	PANOMPAI DUANGJIT	Block A	04-03-19	8.07626	99.09158	Khok Yang	Nuea Khlong	Krabi	2.26	2.26
			Block B	04-03-19	8.09798	99.08290	Khok Yang	Nuea Khlong	Krabi	1.77	1.73
			Block C	04-03-19	8.15602	99.15109	Phela	Khlong Thom	Krabi	7.76	7.76
466	PTO-62-345	PORNTIP KONGMAK	Block A	04-03-19	8.07495	99.12913	Phela	Khlong Thom	Krabi	3.94	3.94
			Block B	04-03-19	8.07351	99.12930	Phela	Khlong Thom	Krabi	1.24	1.24
			Block C	04-03-19	8.16373	99.15803	Phela	Khlong Thom	Krabi	4.80	4.80
467	PTO-62-346	PHONPANA KAEOLOK	Block A	04-03-19	8.07840	99.08473	Khok Yang	Nuea Khlong	Krabi	1.19	1.11
468	PTO-62-347	PRONPIMOL CHAIBUN	Block A	04-03-19	8.06908	99.09677	Khok Yang	Nuea Khlong	Krabi	2.32	2.32
			Block B	04-03-19	8.07099	99.08425	Khok Yang	Nuea Khlong	Krabi	0.80	0.80
469	PTO-62-348	PORNTHIP KAEWKERD	Block A	04-03-19	8.17634	99.13298	Pru Tiao	Khao Phanom	Krabi	3.04	3.04



**BUREAU  
VERITAS**

470	PTO-62-349	PORNTIWA SRINGAM	Block A	04-03-19	8.10673	99.11064	Phela	Khlong Thom	Krabi	3.33	2.24
471	PTO-62-350	PHIROM KUNTHOMG	Block A	04-03-19	8.13972	99.10777	Khok Yang	Nuea Khlong	Krabi	6.60	5.12
472	PTO-62-351	PERAWICH KEAWPICHAJ	Block A	04-03-19	8.11289	99.12792	Phela	Khlong Thom	Krabi	9.64	9.64
			Block B	04-03-19	8.09730	99.12666	Phela	Khlong Thom	Krabi	24.01	23.97
473	PTO-62-353	MONTHARAT BUNKAEW	Block A	04-03-19	8.15123	99.13204	Khok Yang	Nuea Khlong	Krabi	3.82	3.20
474	PTO-62-354	MANIT CHAIKLIANG	Block A	04-03-19	8.08941	99.14043	Phela	Khlong Thom	Krabi	0.82	0.82
			Block B	04-03-19	8.08962	99.15012	Phela	Khlong Thom	Krabi	0.83	0.83
			Block C	04-03-19	8.07972	99.15737	Phela	Khlong Thom	Krabi	2.13	2.13
			Block D	04-03-19	8.07725	99.14028	Phela	Khlong Thom	Krabi	3.49	3.49
475	PTO-62-355	MARUT RUANGJARUS	Block A	04-03-19	8.20064	99.17234	Pru Tiao	Khao Phanom	Krabi	11.04	11.04
476	PTO-62-356	MANOCH KAEWMANEE	Block A	04-03-19	8.13938	99.12324	Phela	Khlong Thom	Krabi	2.34	2.34
			Block B	04-03-19	8.12036	99.13287	Phela	Khlong Thom	Krabi	1.04	0.72
477	PTO-62-357	YOTKON BUNCHUAI	Block A	04-03-19	8.13036	99.11210	Khok Yang	Nuea Khlong	Krabi	5.78	5.78
			Block B	04-03-19	8.11048	99.11381	Phela	Khlong Thom	Krabi	1.28	1.28
478	PTO-62-358	CHATCHADAPORN CHANAKUL	Block A	04-03-19	8.07073	99.07670	Khok Yang	Nuea Khlong	Krabi	1.94	1.94
479	PTO-62-361	REWADI RAKKHAO	Block A	04-03-19	8.08815	99.07401	Khok Yang	Nuea Khlong	Krabi	2.05	2.05
			Block B	04-03-19	8.09709	99.12163	Phela	Khlong Thom	Krabi	2.54	2.54
			Block C	04-03-19	8.11087	99.11531	Phela	Khlong Thom	Krabi	1.60	1.60
			Block D	04-03-19	8.10723	99.11159	Phela	Khlong Thom	Krabi	1.87	0.56



**BUREAU  
VERITAS**

			Block E	04-03-19	8.09861	99.08663	Khok Yang	Nuea Khlong	Krabi	1.60	1.60
			Block F	04-03-19	8.10797	99.11341	Phela	Khlong Thom	Krabi	3.80	3.04
480	PTO-62-362	RATCHANEE PRAPHAI	Block A	04-03-19	8.20983	99.13783	Pru Tiao	Khao Phanom	Krabi	4.44	4.44
			Block B	04-03-19	8.21340	99.14616	Pru Tiao	Khao Phanom	Krabi	2.24	2.24
			Block C	04-03-19	8.11372	99.13309	Phela	Khlong Thom	Krabi	1.22	1.22
481	PTO-62-363	LAMAI FUNGFUEANG	Block A	04-03-19	8.12278	99.07949	Phela	Khlong Thom	Krabi	3.40	3.40
482	PTO-62-364	LAOONG LANTHAI	Block A	04-03-19	8.20010	99.15824	Pru Tiao	Khao Phanom	Krabi	9.12	9.12
483	PTO-62-365	WANNA BUTMIT	Block A	04-03-19	8.10595	99.10443	Khok Yang	Nuea Khlong	Krabi	5.13	3.20
			Block B	04-03-19	8.002252	99.06097	Pakasai	Nuea Khlong	Krabi	7.92	6.60
484	PTO-62-367	VARANGRAT BOONMANEE	Block A	04-03-19	8.08071	99.07855	Khok Yang	Nuea Khlong	Krabi	2.08	1.92
			Block B	04-03-19	8.10812	99.11215	Phela	Khlong Thom	Krabi	2.34	2.34
			Block C	04-03-19	8.09917	99.12186	Khok Yang	Nuea Khlong	Krabi	3.29	3.29
			Block D	04-03-19	8.1095	99.11345	Phela	Khlong Thom	Krabi	0.85	0.85
			Block E	04-03-19	8.15417	99.13382	Khok Yang	Nuea Khlong	Krabi	3.20	3.20
			Block F	04-03-19	8.15965	99.11128	Huai Yung	Nuea Khlong	Krabi	2.40	2.40
485	PTO-62-368	VARAPRON CHAISAWAT	Block A	04-03-19	8.10332	99.12729	Phela	Khlong Thom	Krabi	3.97	3.33
486	PTO-62-370	WICHAJ PRATPAI	Block A	04-03-19	8.07354	99.09308	Khok Yang	Nuea Khlong	Krabi	2.40	2.40
			Block B	04-03-19	8.09723	99.05906	Huai Yung	Nuea Khlong	Krabi	4.09	4.09
487	PTO-62-373	VIPARAT LANTHAI	Block A	04-03-19	8.24226	98.99538	Khao Phanom	Khao Phanom	Krabi	6.75	6.32



**BUREAU  
VERITAS**

			Block B	04-03-19	8.19997	99.15612	Pru Tiao	Khao Phanom	Krabi	2.24	2.24
488	PTO-62-374	WITSANU THAPTHAI	Block A	04-03-19	8.18025	99.13249	Pru Tiao	Khao Phanom	Krabi	1.28	1.28
489	PTO-62-377	SRIWAI SIRMANUN	Block A	04-03-19	8.09281	99.12922	Phela	Khlong Thom	Krabi	2.44	2.44
			Block B	04-03-19	8.09686	99.12396	Phela	Khlong Thom	Krabi	1.12	1.12
			Block C	04-03-19	8.09486	99.13194	Phela	Khlong Thom	Krabi	2.88	2.75
			Block D	04-03-19	8.16603	99.14966	Phela	Khlong Thom	Krabi	8.00	8.00
490	PTO-62-378	SIRILUCK THEPADARUCK	Block A	04-03-19	8.11117	99.12603	Phela	Khlong Thom	Krabi	6.90	6.90
491	PTO-62-379	SINTAWEE PASSUCK	Block A	04-03-19	8.11854	99.15146	Phela	Khlong Thom	Krabi	0.84	0.68
			Block B	04-03-19	8.11449	99.16143	Phela	Khlong Thom	Krabi	3.52	3.52
			Block C	04-03-19	8.14273	99.16995	Phela	Khlong Thom	Krabi	9.60	9.60
492	PTO-62-380	SANGOB SIRIMANOON	Block A	04-03-19	8.18413	99.13781	Pru Tiao	Khao Phanom	Krabi	4.80	4.80
493	PTO-62-383	SOMPHON DUANGCHIT	Block A	04-03-19	8.23225	99.13252	Pru Tiao	Khao Phanom	Krabi	3.05	1.36
			Block B	04-03-19	8.23255	99.13009	Pru Tiao	Khao Phanom	Krabi	0.88	0.88
494	PTO-62-384	SOMPHON TRIKUN	Block A	04-03-19	8.12615	99.18409	Phela	Khlong Thom	Krabi	4.48	4.48
			Block B	04-03-19	8.13791	99.12353	Phela	Khlong Thom	Krabi	3.15	3.15
495	PTO-62-385	SOMCHAI KOEDRAK	Block A	04-03-19	8.10279	99.11510	Phela	Khlong Thom	Krabi	0.37	0.33
			Block B	04-03-19	8.10821	99.11888	Phela	Khlong Thom	Krabi	4.64	2.88
496	PTO-62-386	SOMYOD KAEOSUK	Block A	04-03-19	8.08558	99.10057	Khok Yang	Nuea Khlong	Krabi	3.71	3.71
			Block B	04-03-19	8.09161	99.16823	Phela	Khlong Thom	Krabi	3.56	1.76





**BUREAU  
VERITAS**

			Block C	04-03-19	8.09437	99.15015	Phela	Khlong Thom	Krabi	2.32	2.12
497	PTO-62-388	SATIPORN SIRIPONG	Block A	04-03-19	8.19427	99.14507	Pru Tiao	Khao Phanom	Krabi	2.88	2.88
498	PTO-62-390	SROISON PLODRIT	Block A	04-03-19	8.10078	99.09123	Khok Yang	Nuea Khlong	Krabi	1.86	1.86
			Block B	04-03-19	8.07839	99.08056	Khok Yang	Nuea Khlong	Krabi	1.57	1.57
499	PTO-62-391	SUPHAPHON BUNCHUAI	Block A	04-03-19	8.07484	99.08007	Khok Yang	Nuea Khlong	Krabi	1.41	1.41
500	PTO-62-392	SUKASEM SRINGAM	Block A	04-03-19	8.08240	99.13921	Phela	Khlong Thom	Krabi	3.26	3.26
501	PTO-62-393	SUKSAN BOONMANEE	Block A	04-03-19	8.09744	99.10901	Khok Yang	Nuea Khlong	Krabi	3.49	3.49
502	PTO-62-394	SUJIN PANMAT	Block A	04-03-19	8.09153	99.09177	Khok Yang	Nuea Khlong	Krabi	5.28	3.84
503	PTO-62-395	SUCHAT KAEWLUK	Block A	04-03-19	8.12788	99.13542	Phela	Khlong Thom	Krabi	2.03	1.79
504	PTO-62-396	SUCHAT MUEANGPHROM	Block A	04-03-19	8.19787	99.15832	Pru Tiao	Khao Phanom	Krabi	2.56	2.56
			Block B	04-03-19	8.19981	99.15141	Pru Tiao	Khao Phanom	Krabi	5.12	5.12
			Block C	04-03-19	8.17777	99.13326	Pru Tiao	Khao Phanom	Krabi	2.40	2.40
505	PTO-62-397	SUNAN BOOTMIT	Block A	04-03-19	8.08844	99.11924	Phela	Khlong Thom	Krabi	4.00	4.00
506	PTO-62-398	SUPHOD THAPTHIMMUEANG	Block A	04-03-19	8.07249	99.11399	Phela	Khlong Thom	Krabi	7.21	7.21
507	PTO-62-399	SUTHIN THAPTHIMMUEANG	Block A	04-03-19	8.07455	99.11475	Phela	Khlong Thom	Krabi	4.74	4.74
508	PTO-62-401	SUWIN THONGSAMRID	Block A	04-03-19	8.17226	99.16573	Phela	Khlong Thom	Krabi	7.44	7.44
509	PTO-62-402	SANTICHAJ SUKKHANAN	Block A	04-03-19	8.11926	99.13518	Phela	Khlong Thom	Krabi	1.15	1.15
			Block B	04-03-19	8.12388	99.17456	Phela	Khlong Thom	Krabi	0.96	0.96
510	PTO-62-404	SITHICHOK CHAIKHAO	Block A	04-03-19	8.10666	99.12056	Phela	Khlong Thom	Krabi	2.59	1.60



**BUREAU  
VERITAS**

511	PTO-62-405	SARAPE CHUENKLIN	Block A	04-03-19	8.18596	99.18231	Pru Tiao	Khao Phanom	Krabi	3.91	3.91
512	PTO-62-407	SAROT CHAIKAO	Block A	04-03-19	8.06786	99.08864	Khok Yang	Nuea Khlong	Krabi	0.88	0.88
513	PTO-62-408	SAWITREE BOONMANEE	Block A	04-03-19	8.09895	99.11181	Khok Yang	Nuea Khlong	Krabi	3.85	3.68
			Block B	04-03-19	8.10258	99.11162	Phela	Khlong Thom	Krabi	1.60	1.60
514	PTO-62-409	SAMNAO LEPHRAT	Block A	04-03-19	8.17827	99.13007	Pru Tiao	Khao Phanom	Krabi	3.84	3.84
515	PTO-62-410	SAENG PHOMSRI	Block A	04-03-19	8.18665	99.13502	Pru Tiao	Khao Phanom	Krabi	3.52	3.48
516	PTO-62-411	SAENGCHAN MAGDAM	Block A	04-03-19	8.22180	99.15580	Pru Tiao	Khao Phanom	Krabi	2.54	2.54
			Block B	04-03-19	8.22313	99.16085	Pru Tiao	Khao Phanom	Krabi	2.81	2.81
517	PTO-62-412	HAEN TONGTIP	Block A	04-03-19	8.08278	99.06922	Khok Yang	Nuea Khlong	Krabi	2.98	2.98
518	PTO-62-413	ORASA BUTMIT	Block A	04-03-19	8.10783	99.11710	Phela	Khlong Thom	Krabi	1.44	1.44
			Block B	04-03-19	8.10512	99.11743	Phela	Khlong Thom	Krabi	3.04	3.04
			Block C	04-03-19	8.01707	99.13013	Phela	Khlong Thom	Krabi	2.10	1.76
519	PTO-62-414	ONANONG NURAKSA	Block A	04-03-19	8.20362	99.16171	Pru Tiao	Khao Phanom	Krabi	2.08	2.08
			Block B	04-03-19	8.18012	99.13446	Pru Tiao	Khao Phanom	Krabi	0.32	0.32
			Block C	04-03-19	8.19612	99.16675	Pru Tiao	Khao Phanom	Krabi	3.20	3.20
520	PTO-62-416	AUDOMPONG THONGTHIP	Block A	04-03-19	8.09104	99.08723	Khok Yang	Nuea Khlong	Krabi	2.36	2.36
			Block B	04-03-19	8.08958	99.08839	Khok Yang	Nuea Khlong	Krabi	1.22	1.22
			Block C	04-03-19	8.03544	99.07292	Pakasai	Nuea Khlong	Krabi	0.78	0.78
			Block D	04-03-19	7.98234	99.08408	Pakasai	Nuea Khlong	Krabi	5.50	5.50



**BUREAU  
VERITAS**

			Block E	04-03-19	8.07905	99.10855	Khok Yang	Nuea Khlong	Krabi	2.56	2.56
521	PTO-62-417	AURAIORN MANEEMAI	Block A	04-03-19	8.14985	99.12248	Khok Yang	Nuea Khlong	Krabi	3.45	3.29
522	PTO-62-419	ARROM BUNLOED	Block A	04-03-19	8.10301	99.11553	Phela	Khlong Thom	Krabi	5.07	1.44
523	PTO-62-420	ARROM JAMNONGJIT	Block A	04-03-19	8.21889	99.17469	Pru Tiao	Khao Phanom	Krabi	8.00	8.00
			Block B	04-03-19	8.21816	99.14091	Pru Tiao	Khao Phanom	Krabi	3.84	3.84
524	PTO-62-421	ARTHON AENGCHUAN	Block A	04-03-19	8.09957	99.12859	Phela	Khlong Thom	Krabi	5.20	5.20
525	PTO-62-422	A-REERAT GHAMNONGCHIT	Block A	04-03-19	8.21629	99.13809	Pru Tiao	Khao Phanom	Krabi	14.10	14.10
			Block B	04-03-19	8.21698	99.14952	Pru Tiao	Khao Phanom	Krabi	3.20	3.20
526	PTO-64-01	KIMPUN TIHO	Block A	15/2/2021	7.70549	99.30796	Sai khao	Khlong Thom	Krabi	12.63	12.55
			Block B	15/2/2021	7.71556	99.30267	Sai khao	Khlong Thom	Krabi	10.40	10.40
			Block C	15/2/2021	7.69402	99.30911	Kalase	Sikao	Trang	2.41	2.41
			Block D	15/2/2021	7.70348	99.31529	Kalase	Sikao	Trang	8.38	7.68
			Block E	15/2/2021	7.71008	99.33258	Kalase	Sikao	Trang	1.78	1.78
			Block F	15/2/2021	7.69147	99.32134	Kalase	Sikao	Trang	3.73	3.24
527	PTO-64-02	WICHAJ PANAPITAKKUL	Block A	15/2/2021	7.72115	99.29869	Sai khao	Khlong Thom	Krabi	10.78	9.76
			Block B	15/2/2021	7.71672	99.28532	Sai khao	Khlong Thom	Krabi	5.09	5.09
			Block C	15/2/2021	7.71736	99.28713	Sai khao	Khlong Thom	Krabi	2.72	2.72
			Block D	15/2/2021	7.71893	99.2976	Sai khao	Khlong Thom	Krabi	0.89	0.89
			Block E	15/2/2021	7.73319	99.26577	Sai khao	Khlong Thom	Krabi	6.25	6.25



**BUREAU  
VERITAS**

528	PTO-64-03	VERAPHAT PANAPITAKKUL	Block A	15/2/2021	7.69746	99.31771	Kalase	Sikao	Trang	5.92	5.92
			Block B	15/2/2021	7.68959	99.33778	Kalase	Sikao	Trang	1.88	1.88
			Block C	15/2/2021	7.69757	99.31304	Kalase	Sikao	Trang	7.13	7.13
			Block D	15/2/2021	7.67744	99.34935	Kalase	Sikao	Trang	10.00	10.00
			Block E	15/2/2021	7.68018	99.34778	Kalase	Sikao	Trang	5.42	5.42
			Block F	15/2/2021	7.68686	99.33997	Kalase	Sikao	Trang	19.52	19.52
529	PTO-64-04	ROENG NUCHUAI	Block A	15/2/2021	7.70518	99.28848	Sai khao	Khlong Thom	Krabi	48.24	45.50
530	PTO-64-05	AMKHA MEEBUN	Block A	15/2/2021	7.71226	99.29638	Sai khao	Khlong Thom	Krabi	40.59	35.90
531	PTO-64-06	WICHAI MINHWANG	Block B	15/2/2021	7.70774	99.29155	Sai khao	Khlong Thom	Krabi	31.18	25.00
			Block C	15/2/2021	7.7079	99.30131	Sai khao	Khlong Thom	Krabi	4.54	4.54
			Block D	15/2/2021	7.70137	99.29311	Sai khao	Khlong Thom	Krabi	2.82	2.82
			Block E	15/2/2021	7.68019	99.26555	Sai khao	Khlong Thom	Krabi	16.20	16.20
532	PTO-64-07	PHISAN TINGSOMCHASIN	Block A	15/2/2021	7.70892	99.27282	Sai khao	Khlong Thom	Krabi	8.16	8.16
			Block B	15/2/2021	7.69543	99.27278	Sai khao	Khlong Thom	Krabi	31.30	31.30
			Block C	15/2/2021	7.6889	99.27145	Sai khao	Khlong Thom	Krabi	3.06	3.06
533	PTO-64-08	BANLUE LANGKABAM	Block A	15/2/2021	7.69762	99.26996	Sai khao	Khlong Thom	Krabi	49.00	49.00
534	PTO-64-09	LASANA HABHIW	Block A	15/2/2021	7.69408	99.30653	Kalase	Sikao	Trang	47.30	46.50
535	PTO-64-10	KORAWIT DUANGCHIT	Block A	15/2/2021	8.12214	99.13594	Phela	Khlong Thom	Krabi	2.24	2.24
536	PTO-64-11	KIMHIANG CHUMANEE	Block A	15/2/2021	8.11978	99.15676	Phela	Khlong Thom	Krabi	2.10	1.78



**BUREAU  
VERITAS**

537	PTO-64-12	JANPHEN LONGLOI	Block A	15/2/2021	8.10081	99.13104	Phela	Khlong Thom	Krabi	3.48	2.88
538	PTO-64-13	CHINDA SRIMUEANG	Block A	15/2/2021	8.12351	99.18533	Phela	Khlong Thom	Krabi	4.80	4.80
539	PTO-64-14	JAP JITRAK	Block A	15/2/2021	8.13446	99.12541	Phela	Khlong Thom	Krabi	2.41	2.41
540	PTO-64-15	CHARUEK THIPSURAT	Block A	15/2/2021	8.12755	99.1682	Phela	Khlong Thom	Krabi	2.47	1.12
541	PTO-64-16	JITRAGORN SREENGAM	Block A	15/2/2021	8.12217	99.14424	Phela	Khlong Thom	Krabi	2.03	2.03
			Block B	15/2/2021	8.13212	99.14981	Phela	Khlong Thom	Krabi	2.29	2.29
542	PTO-64-17	CHINTANA AENGCHUAN	Block A	15/2/2021	8.11242	99.17201	Phela	Khlong Thom	Krabi	4.24	4.24
			Block B	15/2/2021	8.09384	99.15716	Phela	Khlong Thom	Krabi	1.69	1.65
			Block C	15/2/2021	8.09393	99.14854	Phela	Khlong Thom	Krabi	1.47	1.47
543	PTO-64-18	JIRAPHONG THUBTHIMMUANG	Block A	15/2/2021	8.13699	99.13001	Phela	Khlong Thom	Krabi	7.76	7.76
544	PTO-64-19	CHURIPORN PHENGRAK	Block A	15/2/2021	8.08115	99.12411	Phela	Khlong Thom	Krabi	3.29	2.24
			Block B	15/2/2021	8.08305	99.12735	Phela	Khlong Thom	Krabi	1.95	1.95
545	PTO-64-20	CHUA MAHASAK	Block A	15/2/2021	8.08179	99.1425	Phela	Khlong Thom	Krabi	3.07	2.99
			Block B	15/2/2021	8.0849	99.14593	Phela	Khlong Thom	Krabi	1.03	1.03
546	PTO-64-21	CHAOOR NA-NAKHON	Block A	15/2/2021	8.08699	99.14392	Phela	Khlong Thom	Krabi	2.45	2.45
547	PTO-64-22	TAYAPAT SRISONGKHRAM	Block A	15/2/2021	8.08843	99.13534	Phela	Khlong Thom	Krabi	2.24	2.24
			Block B	15/2/2021	8.06754	99.13159	Phela	Khlong Thom	Krabi	3.20	3.20
			Block C	15/2/2021	8.06821	99.13143	Phela	Khlong Thom	Krabi	1.28	1.20
548	PTO-64-23	NAPHAT RUANGJARUS	Block A	15/2/2021	8.10634	99.12765	Phela	Khlong Thom	Krabi	2.24	2.24



**BUREAU  
VERITAS**

			Block B	15/2/2021	8.1033	99.13692	Phela	Khlong Thom	Krabi	0.83	0.83
			Block C	15/2/2021	8.10591	99.12956	Phela	Khlong Thom	Krabi	2.56	1.60
			Block D	15/2/2021	8.10528	99.132	Phela	Khlong Thom	Krabi	1.96	1.96
			Block E	15/2/2021	8.06461	99.14204	Phela	Khlong Thom	Krabi	0.92	0.92
549	PTO-64-24	NARAKAEK THONGTHIP	Block A	15/2/2021	8.1178	99.16524	Phela	Khlong Thom	Krabi	3.68	3.68
550	PTO-64-25	TONG AIANIENG	Block A	15/2/2021	8.14471	99.17877	Phela	Khlong Thom	Krabi	2.35	2.35
			Block B	15/2/2021	8.14783	99.18171	Phela	Khlong Thom	Krabi	2.74	2.56
			Block C	15/2/2021	8.14663	99.18044	Phela	Khlong Thom	Krabi	4.68	3.88
551	PTO-64-26	THAU AON KAEWLUK	Block A	15/2/2021	8.10645	99.15107	Phela	Khlong Thom	Krabi	0.83	0.83
552	PTO-64-27	THONGMAI KAECHUEA	Block A	15/2/2021	8.0886	99.14127	Phela	Khlong Thom	Krabi	1.29	1.29
553	PTO-64-28	TEERASAK AENGCHUAN	Block A	15/2/2021	8.10607	99.14858	Phela	Khlong Thom	Krabi	2.63	2.63
554	PTO-64-29	NIYOM AENGCHUAN	Block A	15/2/2021	8.11289	99.1472	Phela	Khlong Thom	Krabi	0.99	0.99
			Block B	15/2/2021	8.07872	99.15742	Phela	Khlong Thom	Krabi	3.49	3.49
			Block C	15/2/2021	8.1123	99.17055	Phela	Khlong Thom	Krabi	2.24	2.24
555	PTO-64-30	NIRAMON THAPTHIMMUEANG	Block A	15/2/2021	8.12346	99.13794	Phela	Khlong Thom	Krabi	1.92	1.92
556	PTO-64-31	NUTCHAREE THONGCHAI	Block A	15/2/2021	8.12261	99.1864	Phela	Khlong Thom	Krabi	1.99	1.99
557	PTO-64-32	BAMRUNG SRITHONG	Block A	15/2/2021	8.10432	99.14401	Phela	Khlong Thom	Krabi	2.23	2.19
558	PTO-64-33	BUNCHUAI ROTPHAI	Block A	15/2/2021	8.14575	99.18134	Phela	Khlong Thom	Krabi	1.22	1.18
			Block B	15/2/2021	8.14705	99.18428	Phela	Khlong Thom	Krabi	3.40	3.40



**BUREAU  
VERITAS**

559	PTO-64-34	BUNYARAT SUEPWISET	Block A	15/2/2021	8.09639	99.15163	Phela	Khlong Thom	Krabi	4.62	4.54
560	PTO-64-35	BUNNAM CHUKHAN	Block A	15/2/2021	8.09683	99.1378	Phela	Khlong Thom	Krabi	1.53	1.53
			Block B	15/2/2021	8.08101	99.13978	Phela	Khlong Thom	Krabi	2.56	1.28
			Block C	15/2/2021	8.06565	99.14556	Phela	Khlong Thom	Krabi	3.21	1.76
			Block D	15/2/2021	8.07509	99.23946	Phela	Khlong Thom	Krabi	1.90	1.90
561	PTO-64-36	BUNYA SRIMUEANG	Block A	15/2/2021	8.14619	99.16522	Phela	Khlong Thom	Krabi	4.72	4.56
562	PTO-64-37	BENCHAPORN THAPSAI	Block A	15/2/2021	8.04804	99.12672	Phela	Khlong Thom	Krabi	4.21	4.01
			Block B	15/2/2021	8.0403	99.12638	Phela	Khlong Thom	Krabi	1.51	1.51
			Block C	15/2/2021	8.04878	99.12373	Phela	Khlong Thom	Krabi	4.16	1.60
563	PTO-64-38	BAIBUA AENGCHUAN	Block A	15/2/2021	8.10356	99.14175	Phela	Khlong Thom	Krabi	2.99	2.67
564	PTO-64-39	PRATHIP NA-NAKON	Block A	15/2/2021	8.08401	99.12762	Phela	Khlong Thom	Krabi	2.49	2.49
			Block B	15/2/2021	8.08248	99.12581	Phela	Khlong Thom	Krabi	4.22	4.22
			Block C	15/2/2021	8.0803	99.11554	Phela	Khlong Thom	Krabi	3.20	3.20
			Block D	15/2/2021	8.07273	99.12615	Phela	Khlong Thom	Krabi	4.17	2.40
			Block E	15/2/2021	8.07334	99.12678	Phela	Khlong Thom	Krabi	3.25	1.12
565	PTO-64-40	PRICHA MANEEMAI	Block A	15/2/2021	8.07346	99.1167	Phela	Khlong Thom	Krabi	4.94	3.18
			Block B	15/2/2021	8.07351	99.10926	Phela	Khlong Thom	Krabi	1.92	1.92
566	PTO-64-41	PRUNG MANIMAI	Block A	15/2/2021	8.07398	99.10911	Phela	Khlong Thom	Krabi	1.60	1.60
567	PTO-64-42	PORNKRITSADEE CHOOMANEE	Block A	15/2/2021	8.11267	99.16699	Phela	Khlong Thom	Krabi	4.41	3.56



**BUREAU  
VERITAS**

568	PTO-64-43	PORNTHIP NOBNOP	Block A	15/2/2021	8.08154	99.12764	Phela	Khlong Thom	Krabi	6.73	6.69
			Block B	15/2/2021	8.08306	99.12322	Phela	Khlong Thom	Krabi	4.00	4.00
569	PTO-64-44	PHIMCHAI SRITHONG	Block A	15/2/2021	8.09648	99.14675	Phela	Khlong Thom	Krabi	1.31	1.31
570	PTO-64-45	PHIRAPORN OONCHAN	Block A	15/2/2021	8.13053	99.18066	Phela	Khlong Thom	Krabi	3.40	3.40
571	PTO-64-46	PHENSRI CHUTHONG	Block A	15/2/2021	8.12872	99.17978	Phela	Khlong Thom	Krabi	2.61	2.61
			Block B	15/2/2021	8.10295	99.1487	Phela	Khlong Thom	Krabi	2.06	2.06
572	PTO-64-47	PAIROD BUNMANEE	Block A	15/2/2021	8.09086	99.1345	Phela	Khlong Thom	Krabi	6.09	2.80
573	PTO-64-48	PATSAWADEE SUTTHIKOED	Block A	15/2/2021	8.07653	99.16627	Phela	Khlong Thom	Krabi	8.00	4.64
574	PTO-64-49	RODTHACHAI SINGAM	Block A	15/2/2021	8.0764	99.14136	Phela	Khlong Thom	Krabi	3.02	3.02
575	PTO-64-50	RABIAB SRINGAM	Block A	15/2/2021	8.10881	99.14837	Phela	Khlong Thom	Krabi	0.81	0.81
576	PTO-64-51	LAMIAD SRITHONG	Block A	15/2/2021	8.0978	99.14726	Phela	Khlong Thom	Krabi	0.91	0.91
577	PTO-64-52	WAN THAPTHIMMUEANG	Block A	15/2/2021	8.11647	99.14202	Phela	Khlong Thom	Krabi	1.38	1.38
578	PTO-64-53	WANNEE HWANCHIAA	Block A	15/2/2021	8.05054	99.15136	Phela	Khlong Thom	Krabi	2.77	2.77
			Block B	15/2/2021	8.1217	99.18145	Phela	Khlong Thom	Krabi	5.09	5.09
579	PTO-64-54	WAREE SRIMUEANG	Block A	15/2/2021	8.13231	99.15551	Phela	Khlong Thom	Krabi	2.76	2.76
			Block B	15/2/2021	8.14117	99.18217	Phela	Khlong Thom	Krabi	4.32	4.32
580	PTO-64-55	WICHIT PIAKBOOT	Block A	15/2/2021	8.07953	99.1519	Phela	Khlong Thom	Krabi	1.19	1.19
			Block B	15/2/2021	8.08404	99.1508	Phela	Khlong Thom	Krabi	1.30	1.30
			Block C	15/2/2021	8.08141	99.15766	Phela	Khlong Thom	Krabi	4.92	4.92





**BUREAU  
VERITAS**

			Block D	15/2/2021	8.07781	99.15457	Phela	Khlong Thom	Krabi	2.87	1.80
			Block E	15/2/2021	8.04408	99.10277	Phela	Khlong Thom	Krabi	4.17	4.17
581	PTO-64-57	WEERAPONG KAEWSUK	Block A	15/2/2021	8.12464	99.15812	Phela	Khlong Thom	Krabi	1.01	1.01
582	PTO-64-58	WUTTHICAI CHUMANEE	Block A	15/2/2021	8.12349	99.16346	Phela	Khlong Thom	Krabi	0.90	0.90
583	PTO-64-59	SONKHIRI SITHONG	Block A	15/2/2021	8.12586	99.18139	Phela	Khlong Thom	Krabi	8.71	8.67
584	PTO-64-60	SONCHAI THONGPHETR	Block A	15/2/2021	8.10653	99.16294	Phela	Khlong Thom	Krabi	8.80	8.80
			Block B	15/2/2021	8.11718	99.19068	Phru Din Na	Khlong Thom	Krabi	3.36	3.36
			Block C	15/2/2021	8.08979	99.17015	Phela	Khlong Thom	Krabi	6.31	3.68
585	PTO-64-61	SALINDA PHETRSUK	Block A	15/2/2021	8.13572	99.17318	Phela	Khlong Thom	Krabi	4.22	1.66
			Block B	15/2/2021	8.15193	99.15086	Phela	Khlong Thom	Krabi	4.32	2.72
586	PTO-64-62	SUPPHANAN KHONGKOED	Block A	15/2/2021	8.11872	99.13389	Phela	Khlong Thom	Krabi	4.03	3.95
587	PTO-64-63	SOMBAT CHANGKHIT	Block A	15/2/2021	8.10361	99.14483	Phela	Khlong Thom	Krabi	2.82	2.82
			Block B	15/2/2021	8.08893	99.16434	Phela	Khlong Thom	Krabi	4.80	2.40
			Block C	15/2/2021	8.07764	99.16802	Phela	Khlong Thom	Krabi	3.14	3.14
588	PTO-64-64	SOMYOD SRIMUEANG	Block A	15/2/2021	8.10885	99.15449	Phela	Khlong Thom	Krabi	2.58	2.58
			Block B	15/2/2021	8.11762	99.17832	Phela	Khlong Thom	Krabi	2.40	2.40
589	PTO-64-65	SOMSAK SRIWAB	Block A	15/2/2021	8.08009	99.16592	Phela	Khlong Thom	Krabi	1.12	1.12
590	PTO-64-66	SAHAT SRISONGKHRAM	Block A	15/2/2021	8.07908	99.13333	Phela	Khlong Thom	Krabi	1.61	1.61
591	PTO-64-67	SAKHON NANAKHON	Block A	15/2/2021	8.0741	99.13222	Phela	Khlong Thom	Krabi	5.44	2.24



**BUREAU  
VERITAS**

			Block B	15/2/2021	8.08175	99.12243	Phela	Khlong Thom	Krabi	2.82	2.82
			Block C	15/2/2021	8.07282	99.10900	Phela	Khlong Thom	Krabi	1.60	1.60
			Block D	15/2/2021	8.07871	99.12416	Phela	Khlong Thom	Krabi	3.36	3.36
592	PTO-64-68	SAISUNEE SAKPHROM	Block A	15/2/2021	8.09976	99.1306	Phela	Khlong Thom	Krabi	1.28	1.28
			Block B	15/2/2021	8.11275	99.13625	Phela	Khlong Thom	Krabi	1.06	1.06
593	PTO-64-69	SITTHIRAT SITHONG	Block A	15/2/2021	8.0804	99.14718	Phela	Khlong Thom	Krabi	3.94	2.24
594	PTO-64-70	SINTHAI PLOTRIT	Block A	15/2/2021	8.14716	99.18239	Phela	Khlong Thom	Krabi	1.62	1.62
595	PTO-64-71	SUKANYA PHAKAMAT	Block A	15/2/2021	8.10084	99.15085	Phela	Khlong Thom	Krabi	4.46	4.46
596	PTO-64-72	SUKHUM PECHSUK	Block A	15/2/2021	8.11097	99.14205	Phela	Khlong Thom	Krabi	1.85	1.85
597	PTO-64-73	SUCHON SRIMUEANG	Block A	15/2/2021	8.14577	99.18671	Phela	Khlong Thom	Krabi	3.89	3.89
598	PTO-64-74	SUTHIN CHONGBUT	Block A	15/2/2021	8.05048	99.18185	Phru Din Na	Khlong Thom	Krabi	7.43	2.92
			Block B	15/2/2021	8.07616	99.14899	Phela	Khlong Thom	Krabi	2.50	2.50
			Block C	15/2/2021	8.08415	99.17951	Phru Din Na	Khlong Thom	Krabi	4.80	4.80
			Block D	15/2/2021	8.08861	99.17482	Phru Din Na	Khlong Thom	Krabi	2.40	2.40
			Block E	15/2/2021	8.07937	99.17931	Phru Din Na	Khlong Thom	Krabi	9.60	9.60
599	PTO-64-75	SUPHAT TEMTHAP	Block A	15/2/2021	8.12707	99.13668	Phela	Khlong Thom	Krabi	1.90	1.90
600	PTO-64-76	SUPANEE THONGPRUNG	Block A	15/2/2021	8.07783	99.12489	Phela	Khlong Thom	Krabi	2.49	2.49
601	PTO-64-77	SUMET SRITHONG	Block A	15/2/2021	8.09789	99.13586	Phela	Khlong Thom	Krabi	1.33	1.33
			Block B	15/2/2021	8.10093	99.1362	Phela	Khlong Thom	Krabi	7.15	7.03



**BUREAU  
VERITAS**

			Block C	15/2/2021	8.1409	99.13382	Phela	Khlong Thom	Krabi	6.08	6.08
602	PTO-64-78	SURAKIT SUEPWISET	Block A	15/2/2021	8.09373	99.16247	Phela	Khlong Thom	Krabi	2.90	2.90
			Block B	15/2/2021	8.08654	99.13197	Phela	Khlong Thom	Krabi	4.13	4.09
603	PTO-64-79	SUVIT CHAI-KAW	Block A	15/2/2021	8.13222	99.1795	Phela	Khlong Thom	Krabi	2.88	2.40
604	PTO-64-80	SANE THAPTHIMMUEANG	Block A	15/2/2021	8.13365	99.13563	Phela	Khlong Thom	Krabi	3.35	3.27
605	PTO-64-81	NULIAM THONGCHUAI	Block A	15/2/2021	8.1267	99.1428	Phela	Khlong Thom	Krabi	5.21	4.48
606	PTO-64-82	ANANYAKRON ARSA	Block A	15/2/2021	8.12959	99.16454	Phela	Khlong Thom	Krabi	4.82	2.00
			Block B	15/2/2021	8.11957	99.15112	Phela	Khlong Thom	Krabi	1.11	1.03
			Block C	15/2/2021	8.12398	99.17806	Phela	Khlong Thom	Krabi	2.40	2.40
607	PTO-64-83	AMPA PETCHSUK	Block A	15/2/2021	8.12321	99.16667	Phela	Khlong Thom	Krabi	2.82	2.82
608	PTO-64-84	ARLAIWAN SAIPAN	Block A	15/2/2021	8.07126	99.13108	Phela	Khlong Thom	Krabi	3.51	3.51
609	PTO-64-85	ISARANUPONG JINAPIROM	Block A	15/2/2021	8.08483	99.14534	Phela	Khlong Thom	Krabi	1.46	1.46
610	PTO-64-86	UTHAITIP JITRAK	Block A	15/2/2021	8.11147	99.16773	Phela	Khlong Thom	Krabi	1.59	1.59
611	PTO-64-87	AUBON SRITHONG	Block A	15/2/2021	8.11769	99.17766	Phela	Khlong Thom	Krabi	2.56	2.56
612	PTO-64-88	AIAN THAPTHIMMUEANG	Block A	15/2/2021	8.11795	99.14291	Phela	Khlong Thom	Krabi	1.80	1.32
613	PTO-64-89	ANUSIT SRITHONG	Block A	15/2/2021	8.11335	99.16041	Phela	Khlong Thom	Krabi	9.76	9.60
			Block B	15/2/2021	8.11100	99.15714	Phela	Khlong Thom	Krabi	3.08	2.60
614	PTO-64-90	CHALOEM THONGDEE	Block A	15/2/2021	8.14177	99.15132	Phela	Khlong Thom	Krabi	1.94	1.94
615	PTO-64-91	CHAIYAN TONGCHUY	Block A	15/2/2021	8.14832	99.15258	Phela	Khlong Thom	Krabi	5.56	3.36



**BUREAU  
VERITAS**

616	PTO-64-93	LAMYONG THONGNOON	Block A	15/2/2021	8.14778	99.14933	Phela	Khlong Thom	Krabi	1.50	1.50
617	PTO-64-94	SAYAN THIPSURAT	Block A	15/2/2021	8.15129	99.15925	Phela	Khlong Thom	Krabi	2.75	2.00
618	PTO-64-98	KANYAPORN KETRAT	Block A	15/2/2021	8.13198	99.14722	Phela	Khlong Thom	Krabi	1.25	1.25
619	PTO-64-99	KAN BUNMANI	Block A	15/2/2021	8.1377	99.14977	Phela	Khlong Thom	Krabi	1.10	1.10
			Block B	15/2/2021	8.13999	99.15236	Phela	Khlong Thom	Krabi	1.97	1.97
620	PTO-64-100	KANCHANA PHAKAMAT	Block A	15/2/2021	8.10711	99.1689	Phela	Khlong Thom	Krabi	3.13	1.12
			Block B	15/2/2021	8.10837	99.16772	Phela	Khlong Thom	Krabi	1.16	1.16
			Block C	15/2/2021	8.09957	99.15016	Phela	Khlong Thom	Krabi	1.57	1.57
621	PTO-64-101	KITTI SUANKUN	Block A	15/2/2021	8.08488	99.13653	Phela	Khlong Thom	Krabi	1.36	1.04
			Block B	15/2/2021	8.08715	99.12837	Phela	Khlong Thom	Krabi	2.85	2.85
			Block C	15/2/2021	8.07856	99.135	Phela	Khlong Thom	Krabi	1.91	1.91
622	PTO-64-102	KUSUMA JORNTRIT	Block A	15/2/2021	8.10482	99.12693	Phela	Khlong Thom	Krabi	1.83	1.60
623	PTO-64-103	KASAMSAK BUNMANEE	Block A	15/2/2021	8.09507	99.1129	Khok Yang	Nuea Khlong	Krabi	2.72	2.68
624	PTO-64-104	JARUS PETSRI TONG	Block A	15/2/2021	8.11498	99.16507	Phela	Khlong Thom	Krabi	3.52	2.56
			Block B	15/2/2021	8.12189	99.16546	Phela	Khlong Thom	Krabi	11.42	10.88
625	PTO-64-105	JANCHAY KAMUNEE	Block A	15/2/2021	8.09119	99.08525	Phela	Khlong Thom	Krabi	2.24	2.24
626	PTO-64-106	JANYA TABTRAI	Block A	15/2/2021	8.11187	99.13792	Phela	Khlong Thom	Krabi	1.31	1.31
627	PTO-64-107	CHARI KIADWICHADIT	Block A	15/2/2021	8.10167	99.16417	Phela	Khlong Thom	Krabi	2.42	1.46
			Block B	15/2/2021	8.1014	99.16257	Phela	Khlong Thom	Krabi	1.12	1.12



**BUREAU  
VERITAS**

628	PTO-64-108	CHAMNONG CHITRAK	Block A	15/2/2021	8.08197	99.06561	Khok Yang	Nuea Khlong	Krabi	1.39	1.39
			Block B	15/2/2021	8.07705	99.09275	Phela	Khlong Thom	Krabi	1.40	1.40
629	PTO-64-109	CHINNA KHONGPHAKDEE	Block A	15/2/2021	8.08745	99.1561	Phela	Khlong Thom	Krabi	1.47	1.14
			Block B	15/2/2021	8.08364	99.15159	Phela	Khlong Thom	Krabi	1.22	1.22
630	PTO-64-110	KHANCHIT KHONGPHAKDI	Block A	15/2/2021	8.08509	99.14934	Phela	Khlong Thom	Krabi	1.59	1.59
			Block B	15/2/2021	8.08717	99.15298	Phela	Khlong Thom	Krabi	1.16	1.12
631	PTO-64-111	CHONLATIP NA-NAKORN	Block A	15/2/2021	8.09427	99.09154	Khok Yang	Nuea Khlong	Krabi	5.66	5.66
632	PTO-64-112	CHUAN JITRAK	Block A	15/2/2021	8.06993	99.07878	Khok Yang	Nuea Khlong	Krabi	2.13	2.13
			Block B	15/2/2021	8.0757	99.07802	Khok Yang	Nuea Khlong	Krabi	0.99	0.83
633	PTO-64-113	CHIRDSUK CHENGDEE	Block A	15/2/2021	8.06822	99.16852	Phela	Khlong Thom	Krabi	1.60	1.60
			Block B	15/2/2021	8.07706	99.10279	Khok Yang	Nuea Khlong	Krabi	6.40	6.32
			Block C	15/2/2021	8.07207	99.10683	Khok Yang	Nuea Khlong	Krabi	1.60	1.60
634	PTO-64-114	DANUSON TIPSURAD	Block A	15/2/2021	8.08539	99.10284	Khok Yang	Nuea Khlong	Krabi	1.21	1.17
635	PTO-64-115	DARUNEE PHETCHAHWANG	Block A	15/2/2021	8.10066	99.15398	Phela	Khlong Thom	Krabi	1.88	1.80
636	PTO-64-116	DAENG SAENGKRACHANG	Block A	15/2/2021	8.09454	99.10801	Khok Yang	Nuea Khlong	Krabi	2.49	2.49
			Block B	15/2/2021	8.08073	99.1037	Khok Yang	Nuea Khlong	Krabi	1.84	1.84
637	PTO-64-117	THANONGSAK BOONMANI	Block A	15/2/2021	8.10354	99.11021	Phela	Khlong Thom	Krabi	1.79	1.79
			Block B	15/2/2021	8.10568	99.11126	Phela	Khlong Thom	Krabi	2.32	2.08
			Block C	15/2/2021	8.10355	99.11191	Phela	Khlong Thom	Krabi	1.92	1.92



**BUREAU  
VERITAS**

638	PTO-64-118	THAWISAK LONGLOY	Block A	15/2/2021	8.1181	99.10102	Khok Yang	Nuea Khlong	Krabi	0.94	0.94
			Block B	15/2/2021	8.09499	99.09348	Khok Yang	Nuea Khlong	Krabi	1.61	1.12
639	PTO-64-119	TEERAYUTH SRIMUANG	Block A	15/2/2021	8.12386	99.13443	Phela	Khlong Thom	Krabi	1.98	1.94
640	PTO-64-120	THEERAYUTT JAIKLIANG	Block A	15/2/2021	8.11153	99.11621	Phela	Khlong Thom	Krabi	7.68	7.68
641	PTO-64-121	NATTAWIT THONGPRUNG	Block A	15/2/2021	8.10909	99.17056	Phela	Khlong Thom	Krabi	3.36	3.36
			Block B	15/2/2021	8.10737	99.17167	Phela	Khlong Thom	Krabi	1.00	1.00
642	PTO-64-122	NUKOON NOBNOP	Block A	15/2/2021	8.0834	99.08361	Phela	Khlong Thom	Krabi	1.23	1.00
643	PTO-64-123	BUNCHIAN SRITHONG	Block A	15/2/2021	8.08602	99.14724	Phela	Khlong Thom	Krabi	1.79	1.79
			Block B	15/2/2021	8.08975	99.14681	Phela	Khlong Thom	Krabi	2.24	1.76
			Block C	15/2/2021	8.1035	99.13888	Phela	Khlong Thom	Krabi	3.82	3.82
644	PTO-64-124	BOONYA KAECHUSAENG	Block A	15/2/2021	8.10643	99.16554	Phela	Khlong Thom	Krabi	1.80	1.80
			Block B	15/2/2021	8.10205	99.15354	Phela	Khlong Thom	Krabi	3.50	3.50
645	PTO-64-125	BUNSUK SRITHONG	Block A	15/2/2021	8.10457	99.11962	Phela	Khlong Thom	Krabi	5.76	4.32
			Block B	15/2/2021	8.10493	99.15686	Phela	Khlong Thom	Krabi	0.79	0.79
646	PTO-64-126	PATHUMWAN THAPTHAI	Block A	15/2/2021	8.09411	99.08487	Khok Yang	Nuea Khlong	Krabi	1.69	1.69
			Block B	15/2/2021	8.08071	99.07714	Khok Yang	Nuea Khlong	Krabi	0.87	0.83
647	PTO-64-127	PRAPHAT CHAIBUT	Block A	15/2/2021	8.10299	99.11652	Phela	Khlong Thom	Krabi	2.40	2.40
648	PTO-64-128	PRANI PHATNASIN	Block A	15/2/2021	8.07766	99.07574	Khok Yang	Nuea Khlong	Krabi	1.48	1.48
649	PTO-64-129	PHON SIMUEANG	Block A	15/2/2021	8.12034	99.1257	Phela	Khlong Thom	Krabi	7.49	4.61



**BUREAU  
VERITAS**

650	PTO-64-130	PHONGSAK CHAIKHAO	Block A	15/2/2021	8.13188	99.1803	Phela	Khlong Thom	Krabi	2.72	2.72
			Block B	15/2/2021	8.08431	99.07546	Khok Yang	Nuea Khlong	Krabi	2.54	2.38
651	PTO-64-131	PHONGSAK PHETSUK	Block A	15/2/2021	8.1321	99.17186	Phela	Khlong Thom	Krabi	4.16	4.08
652	PTO-64-132	PHAYOM KITPHAIBUNTHAWI	Block A	15/2/2021	8.10566	99.15327	Phela	Khlong Thom	Krabi	2.91	2.91
			Block B	15/2/2021	8.08039	99.17139	Phela	Khlong Thom	Krabi	4.80	4.80
653	PTO-64-133	PATCHARAMAI SRIMUANG	Block A	15/2/2021	8.13249	99.12574	Phela	Khlong Thom	Krabi	2.08	2.08
			Block B	15/2/2021	8.14758	99.12195	Khok Yang	Nuea Khlong	Krabi	1.66	1.66
			Block C	15/2/2021	8.11547	99.13613	Phela	Khlong Thom	Krabi	1.58	1.58
654	PTO-64-134	PHIAN BUNRUEANG	Block A	15/2/2021	8.09491	99.11875	Phela	Khlong Thom	Krabi	3.13	3.13
655	PTO-64-135	PHAITUN PHUNKOED	Block A	15/2/2021	8.08058	99.13126	Phela	Khlong Thom	Krabi	2.37	2.37
656	PTO-64-137	MONTATIP BUTMIT	Block A	15/2/2021	8.06851	99.0731	Khok Yang	Nuea Khlong	Krabi	2.48	2.40
657	PTO-64-138	RATTANAPORN DUANGTONG	Block A	15/2/2021	8.10006	99.13754	Phela	Khlong Thom	Krabi	3.12	2.96
658	PTO-64-139	RENU LONGLOY	Block A	15/2/2021	8.12222	99.09614	Khok Yang	Nuea Khlong	Krabi	3.51	3.47
			Block B	15/2/2021	8.08324	99.0821	Khok Yang	Nuea Khlong	Krabi	1.32	1.32
659	PTO-64-140	LUEAN THONGPID	Block A	15/2/2021	8.11187	99.10579	Khok Yang	Nuea Khlong	Krabi	2.16	2.16
660	PTO-64-141	LOEPHONG AENGCHUAN	Block A	15/2/2021	8.06943	99.06499	Khok Yang	Nuea Khlong	Krabi	2.29	2.29
661	PTO-64-142	WATSANA KAEOLOK	Block A	15/2/2021	8.07277	99.08345	Khok Yang	Nuea Khlong	Krabi	1.31	1.31
662	PTO-64-143	WERASAK KAEWSIRI	Block A	15/2/2021	8.0709	99.08631	Khok Yang	Nuea Khlong	Krabi	1.09	1.09
663	PTO-64-144	SAYANAN CHUKOED	Block A	15/2/2021	8.08771	99.13078	Khok Yang	Nuea Khlong	Krabi	2.30	2.30



**BUREAU  
VERITAS**

			Block B	15/2/2021	8.08526	99.13338	Khok Yang	Nuea Khlong	Krabi	2.86	2.54
664	PTO-64-146	SIRIORN JEAMSUJIT	Block A	15/2/2021	8.07804	99.09177	Khok Yang	Nuea Khlong	Krabi	1.43	1.43
			Block B	15/2/2021	8.08422	99.11624	Khok Yang	Nuea Khlong	Krabi	3.00	3.00
			Block C	15/2/2021	8.06506	99.07701	Khok Yang	Nuea Khlong	Krabi	1.71	1.71
665	PTO-64-147	SIWAMOKE KONGPOL	Block A	15/2/2021	8.07406	99.07217	Khok Yang	Nuea Khlong	Krabi	0.99	0.83
			Block B	15/2/2021	8.07277	99.07122	Khok Yang	Nuea Khlong	Krabi	2.35	2.35
666	PTO-64-148	SANGOB AINSUWAN	Block A	15/2/2021	8.12414	99.12294	Phela	Khlong Thom	Krabi	6.10	3.84
667	PTO-64-149	SOMJIT THONGTIP	Block A	15/2/2021	8.07964	99.06627	Khok Yang	Nuea Khlong	Krabi	0.80	0.80
			Block B	15/2/2021	8.06905	99.0767	Khok Yang	Nuea Khlong	Krabi	1.87	1.87
			Block C	15/2/2021	8.07245	99.07843	Khok Yang	Nuea Khlong	Krabi	0.76	0.76
668	PTO-64-150	SOMCHAI CHAISWAT	Block A	15/2/2021	8.10312	99.16219	Phela	Khlong Thom	Krabi	1.60	1.60
			Block B	15/2/2021	8.0974	99.15157	Phela	Khlong Thom	Krabi	2.72	2.40
669	PTO-64-151	SOMPORN KOEDSIRI	Block A	15/2/2021	8.26736	99.10646	Phela	Khlong Thom	Krabi	4.64	4.64
			Block B	15/2/2021	8.18715	99.13922	Khao Phanom	Khao Phanom	Krabi	7.36	6.40
670	PTO-64-152	SOMPORN THONGPRUNG	Block A	15/2/2021	8.1035	99.15475	Phela	Khlong Thom	Krabi	5.41	4.00
			Block B	15/2/2021	8.10252	99.1516	Phela	Khlong Thom	Krabi	1.59	1.27
			Block C	15/2/2021	8.09213	99.14958	Phela	Khlong Thom	Krabi	1.00	1.00
671	PTO-64-153	SOMBUN WONGKANHA	Block A	15/2/2021	8.13364	99.18011	Phela	Khlong Thom	Krabi	1.27	1.27
672	PTO-64-154	SOMYOT THONGTIP	Block A	15/2/2021	8.07514	99.07634	Khok Yang	Nuea Khlong	Krabi	1.81	1.81





**BUREAU  
VERITAS**

673	PTO-64-155	SOT KHIAONOI	Block A	15/2/2021	8.1175	99.1255	Phela	Khlong Thom	Krabi	5.48	1.76
674	PTO-64-156	SARIYA LUKMUEANG	Block A	15/2/2021	8.10857	99.15167	Phela	Khlong Thom	Krabi	2.88	2.88
675	PTO-64-157	SAROT JANSONGSAENG	Block A	15/2/2021	8.1145	99.08664	Khok Yang	Nuea Khlong	Krabi	1.05	1.05
676	PTO-64-158	SAMNIANG THONGPHET	Block A	15/2/2021	8.10668	99.17476	Phela	Khlong Thom	Krabi	6.05	4.13
677	PTO-64-159	SUCHIT PHETCHAWANG	Block A	15/2/2021	8.09262	99.14268	Phela	Khlong Thom	Krabi	3.96	2.72
678	PTO-64-160	SUCHITTRA SRIMUEANG	Block A	15/2/2021	8.12326	99.12486	Phela	Khlong Thom	Krabi	1.03	1.03
			Block B	15/2/2021	8.10002	99.10397	Khok Yang	Nuea Khlong	Krabi	4.00	3.52
679	PTO-64-161	SUCHIN THIPSURAT	Block A	15/2/2021	8.0858	99.1367	Phela	Khlong Thom	Krabi	3.04	2.24
			Block B	15/2/2021	8.10153	99.14735	Phela	Khlong Thom	Krabi	3.24	3.24
680	PTO-64-162	SUNAN KAEOSRISOD	Block A	15/2/2021	8.08287	99.13458	Phela	Khlong Thom	Krabi	2.82	2.50
			Block B	15/2/2021	8.08872	99.12934	Phela	Khlong Thom	Krabi	2.47	2.31
681	PTO-64-163	SUPHANE NOBNOP	Block A	15/2/2021	8.10225	99.14933	Phela	Khlong Thom	Krabi	3.71	3.71
682	PTO-64-164	SUWANRAT KHANPRASAENG	Block A	15/2/2021	8.1194	99.12925	Phela	Khlong Thom	Krabi	6.38	6.00
683	PTO-64-165	SAOWANIT KOEDSAP	Block A	15/2/2021	8.06981	99.15517	Phela	Khlong Thom	Krabi	2.98	2.98
			Block B	15/2/2021	8.06835	99.15394	Phela	Khlong Thom	Krabi	3.52	3.52
684	PTO-64-166	SAOWANI KUEABUTR	Block A	15/2/2021	8.13138	99.12995	Phela	Khlong Thom	Krabi	2.60	2.60
685	PTO-64-167	NUNAT DUANGTHONG	Block A	15/2/2021	8.08128	99.09132	Khok Yang	Nuea Khlong	Krabi	2.16	1.60
686	PTO-64-168	APICHAT LONGLOY	Block A	15/2/2021	8.07824	99.08292	Khok Yang	Nuea Khlong	Krabi	3.18	3.18
			Block B	15/2/2021	8.11788	99.10201	Khok Yang	Nuea Khlong	Krabi	2.33	2.33



**BUREAU  
VERITAS**

687	PTO-64-169	AMNUAI SOMSAK	Block A	15/2/2021	8.06839	99.08604	Khok Yang	Nuea Khlong	Krabi	1.67	1.54
			Block B	15/2/2021	8.07192	99.09534	Khok Yang	Nuea Khlong	Krabi	2.08	2.08
688	PTO-64-171	AUBON LONGLOI	Block A	15/2/2021	8.07523	99.08388	Khok Yang	Nuea Khlong	Krabi	1.19	1.19
			Block B	15/2/2021	8.06547	99.07247	Khok Yang	Nuea Khlong	Krabi	0.89	0.89
			Block C	15/2/2021	8.06728	99.0665	Khok Yang	Nuea Khlong	Krabi	4.65	4.65
			Block D	15/2/2021	8.07046	99.06431	Khok Yang	Nuea Khlong	Krabi	1.62	1.62
689	PTO-64-172	PORNCHAI CHAIKAW	Block A	15/2/2021	8.09043	99.15097	Phela	Khlong Thom	Krabi	2.90	2.90
			Block B	15/2/2021	8.09723	99.13286	Phela	Khlong Thom	Krabi	1.12	1.12
690	PTO-64-173	SUTAP NOBNOP	Block A	15/2/2021	8.14369	99.16785	Phela	Khlong Thom	Krabi	5.10	4.67
691	PTO-64-174	SURACHAI SIRIMANOON	Block A	15/2/2021	8.16828	99.17693	Phela	Khlong Thom	Krabi	2.72	2.72
692	PTO-64-175	SUWIANG CHAIKHAO	Block A	15/2/2021	8.13639	99.14589	Phela	Khlong Thom	Krabi	3.98	3.98
			Block B	15/2/2021	8.13998	99.15094	Phela	Khlong Thom	Krabi	1.28	1.28
			Block C	15/2/2021	8.14193	99.14785	Phela	Khlong Thom	Krabi	2.45	2.45
			Block D	15/2/2021	8.14663	99.14198	Phela	Khlong Thom	Krabi	3.96	3.36
			Block E	15/2/2021	8.14592	99.15255	Phela	Khlong Thom	Krabi	3.40	3.40

