



TÜVRheinland[®]
Precisely Right.

RSPO

**AMENDMENT of THE RSPO NOTIFICATION OF
PROPOSED NEW PLANTING**

Date of the amendment of notification : May 26, 2015

Tick whichever is appropriate

<input type="checkbox"/>	This is a completely new development and stakeholders may submit comments
<input checked="" type="checkbox"/>	This is part of an ongoing planting and is meant for notifications only

Company : PT Sawit Mandiri Lestari

Subsidiary : PT Sawit Sumbermas Sarana Tbk

RSPO Membership No. : 1-0111-07-000-00

Location of the Proposed New Planting

PT Sawit Mandiri Lestari (PT SML), a subsidiary of PT Sawit Sumbermas Sarana Tbk, is developing approximately **19,240 ha** of oil palm plantation located at Kinipan, Batu Tambun, Ginih, Riam Panahan, Sungai Tuat, Tanjung Beringin, Cuhai, Kawa, Karang Taba, Penopa, Suja and Tapin Bini Village, Batang Kawa, Delang and Lamandau Sub District, Lamandau Regency, Central Kalimantan Province, Indonesia.

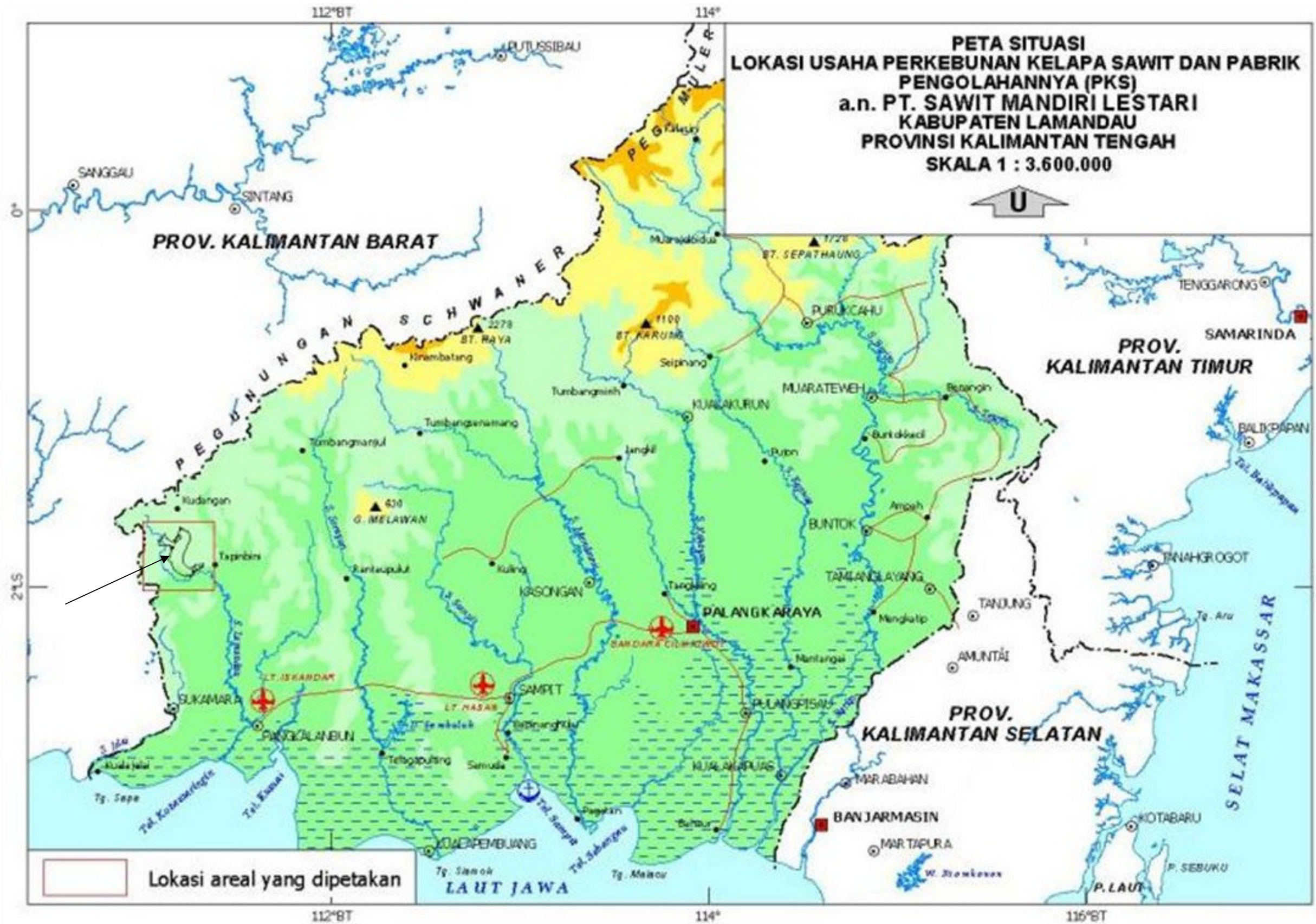
The shareholders of PT SML are PT Sawit Sumbermas Sarana Tbk (99.90%), PT Citra Borneo Indah (0.09%) and PT Mitra Mendawai Sejati (0.01%) (based on change of certificate of incorporation no. 543 dated on December 31, 2013 by notary of Lya Indah Novelya,SH, M.Kn).

General company location information is :

Description	Information
Geography	: 01° 40' 54" - 01° 56' 31" South and 111° 05' 14" - 111° 19' 12" East
Altitude	: 20-365 meters above sea level
Government Administration	: Batang Kawa, Delang and Lamandau Sub District, Lamandau Regency, Central Kalimantan Province.
Forestry/Plantation Administration	: Dinas Kehutanan dan Perkebunan Kabupaten Lamandau / Forestry and Plantation Service Lamandau Regency
Watersheed (DAS)	: Kotawaringin Watersheed (Batangkawa, Delang and Lamandau Sub Watersheed)
Boundary :	
North	: Permit : IUPHHK-HA PT Amprah Mitra Jaya, IUPHHK-HA PT Sari Bumi Kusuma (Unit I & II) Administrative : Batang Kawa & Delang Sub District
East	: Permit : IUPHHK-HA PT Amprah Mitra Jaya Administrative : Batang Kawa & Belantika Raya Sub District
South	: Permit : IUP Pilar Wana Persada, IUP PT Trieka Agro Nusantara, IUPHHK-HA PT Bina Daya Tetra Administrative : Lamandau Sub District
West	: Permit : IUP PT Sawit Lamandau Raya, IUPHHK-HA Sari Bumi Kusuma Administrative : Lamandau Sub District

Estate location map and plantation developing plan map can be seen in **Figure 1** and **Figure 2**.

Company's location in Central Kalimantan Province :



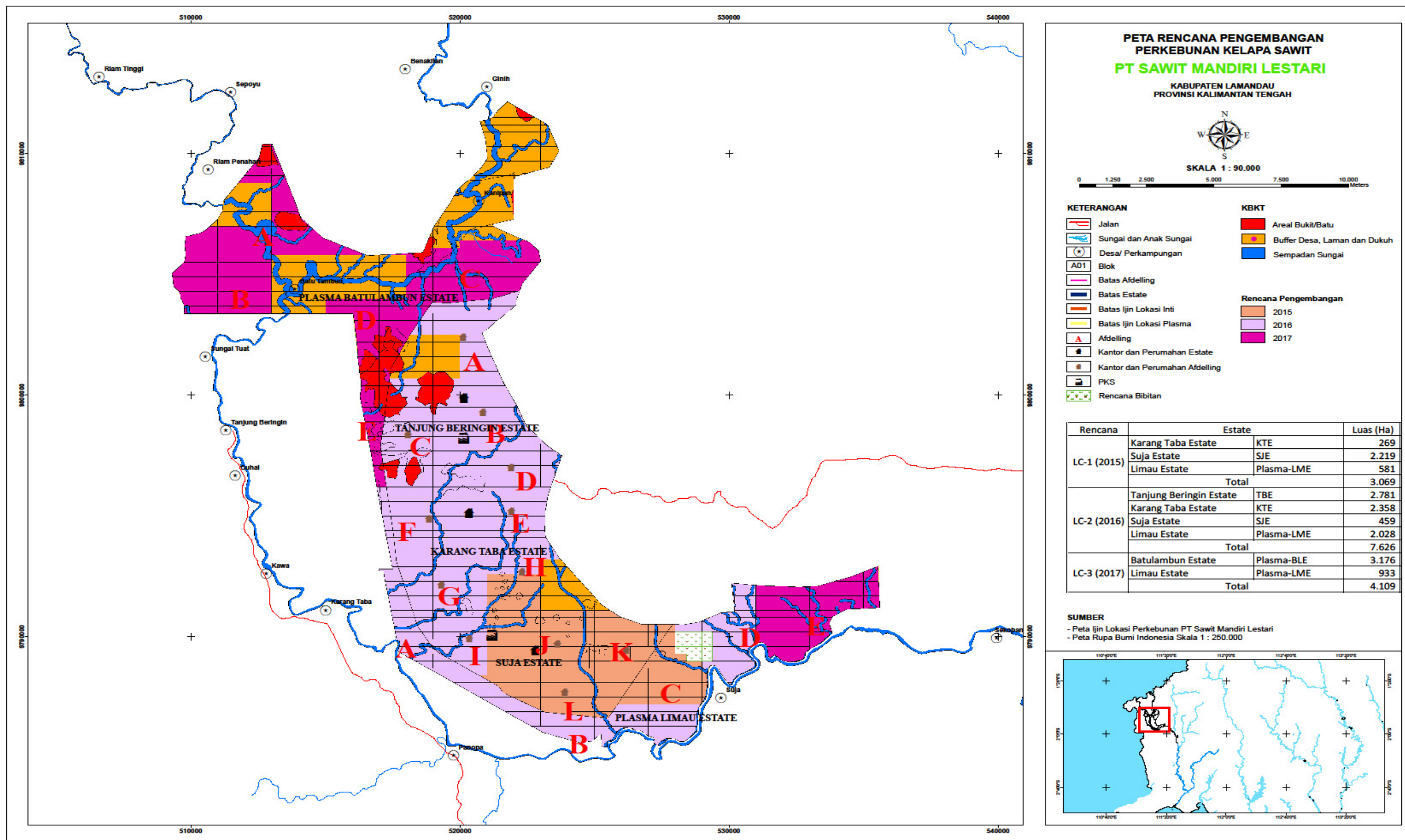


Figure 2. Estate design block map PT Sawit Mandiri Lestari, Lamandau Regency, Central Kalimantan Province

VERIFICATION STATEMENT :

The results of previous assessment that company has obtained some documents relate of legality such as Cultivation Business Permit for release of forest land (Izin Usaha Perkebunan (IUP) untuk pelepasan kawasan hutan) issued by Head of Lamandau District No. Ek.525.26/01/SK-IUP/IV/2014 on April 7, 2014, location permit (Izin Lokasi) for oil palm plantation issued by Head of Lamandau District No.Ek.525.26/15/SK-IL/VI/2012 on June 26, 2012, Environmental Impact Assessment (AMDAL) document based on Head of Lamandau District number Ek.525.26/15/SH-IL/VI/2012 dated on June 26, 2012, Environmental Permit for develop of plantation for areas on production forest for conversion to other forestry uses (HPK) are 23,946.49 Ha of 26,995.46 Ha (location permit) and a palm oil mill with capacity of production is 90 ton FFB/hour from Head of Lamandau District (no. 188.45/478/XI/HUK/2014 on November 21, 2014) and letter from Minister of Forestry (no. S.355/Menhut-II/2014 on August 29, 2014) about approval in principle of production forest for conversion to other forestry uses (HPK) released for the cultivation of oil palm plantation and map it. Based on figure 2 above that auditee has not planned to land clearing in the areas are still production forest for conversion to other forestry uses (HPK) although it has been a permit of the principle of production forest for conversion to other forestry uses (HPK) released for the cultivation of oil palm plantation because based on the law and regulation that the auditee allowed to land clearing after it has Minister of Forestry decree regarding production forest for conversion to other forestry uses (HPK) released for the cultivation of oil palm plantation.

Existing condition that the company has obtained decree from Head of Investment Coordination Board of Republic of Indonesia on behalf Minister of Environmental and Forestry of Republic of Indonesia (no. 1/1/PKH/PMDN/2015 on March 19, 2015) about production forest for conversion to other forestry uses (HPK) released for the cultivation of oil palm plantation amount of **± 19,091.59 Ha** and map it (based on state note of boundary measurement/survey on September 18, 2014).

The verification results of the PT TUV Rheinland Indonesia's auditors that PT Sawit Mandiri Lestari has complied with the RSPO New Planting Procedures enforced on 1st January, 2010 and laws and regulations in Indonesian regarding the process of get land/areas from government include additional document from auditee to verified by auditors i.e Minister of Environmental and Forestry of Republic of Indonesia (no. 1/1/PKH/PMDN/2015 on March 19, 2015) about production forest for conversion to other forestry uses (HPK) released for the cultivation of oil palm plantation.

PT TUV Rheinland Indonesia confirmed that the assessment and plan are comprehensive, professional and compliant of RSPO principles, criteria and indicators for the ongoing plantation activities in PT Sawit Mandiri Lestari.

**Amendment of the RSPO New Planting Procedure
Assessment Report**

PT Sawit Mandiri Lestari – Central Kalimantan

Signed on behalf of
PT TUV Rheinland Indonesia



Hendra Fachrurozy
Lead Auditor
Date : May 26, 2015

On behalf of the company, I acknowledge
the responsibilities of the company.

**Signed on behalf of PT Sawit Mandiri
Lestari**



Rudy Hendrarto
Management Representative
Date : May 26, 2015