

Date: 26/10/2023

Public Notification: RSPO Recertification Audit of Melewar Palm Oil Mill (Melewar Production Unit), J.C. Chang Holdings Sdn Bhd (RSPO Membership: 2-0029-06-000-00)

Dear Stakeholders,

This is to inform that Melewar Palm Oil Mill (Melewar Production Unit), under the Parent company J.C. Chang Holdings Sdn Bhd with RSPO membership number (2-0029-06-000-00) had appointed BSI Services Malaysia Sdn Bhd ("BSI Malaysia") to conduct the Recertification Audit located at Lahad Datu, Sabah, Malaysia. The audit will be conducted from 04/12 to 08/12/2023 against the requirements of Malaysia National Interpretation 2019 of the RSPO P&C 2018 . The supply chain model is Mass Balance.

RSPO PO ID number of the Melewar Palm Oil Mill is: RSPO_PO1000000527

J C Chang Group is a Malaysian based and privately-owned business group covering businesses in oil palm planting, palm oil milling and refining, property and development, hotels, insurance, manufacturing and trading. Oil palm plantations and CPO milling form the core business of the J C Chang Group. J C Chang Group has one CPO mill and five oil palm plantations in Pahang, three CPO mills and twelve oil palm estates in Sabah. The total gross plantation area is about 40,000 hectares. Total milling capacity is about 200 mt FFB per hour. The Group also has one refining and manufacturing plant in Pasir Gudang that produces various downstream palm products for exports. The Group has always been emphasizing and adopting Good Agricultural Practices (GAP) and Good Management Practices (MAP) to ensure sound and efficient management in all areas of business activities in order to promote environmentally friendly and socially responsible practices in their core business of plantations and mills. Their goal is to realize and enhance sustainable production and distribution of safe and premium quality palm products, in line with their objectives and aims of joining RSPO.

The Melewar Production Unit comprises of 1 palm oil mill (Melewar Palm Oil Mill) and 8 oil palm plantations (Gerola Estate, Tye Yang Estate, Melewar Estate 1, Pahang Oil Palm 2 Estate, Pahang Oil Palm 3 Estate, Pelita Estate, Muis Melewar Plantation 1, and Muis Melewar Plantation 2) sited in the State of Sabah, Malaysia. The newly purchased estate and mill namely Hwa Li 2 and Lahad Datu Palm Oil Mill which located at Sabah and previously were RSPO and MSPO certified. The Group will recertify the above mentioned units' RSPO and MSPO certification under J C Chang Group and the units mentioned above will be grouped under Melewar Production Unit later.

Melewar Production Unit is fully RSPO and MSPO certified except ISCC certification where Muis Melewar Plantation 1, Muis Melewar Plantation 2 and Pelita Estate yet to be certified.

1. The information of the production data to be assessed are as follows:

Melewar Palm Oil Mill and Supply Base		
Mill Name	Melewar Palm Oil Mill	
Mill Capacity (tons/hour)	100 MT/hr	
Address / Location	KM 45, Off Jalan Lahad Datu - Sandakan, 91100 Lahad Datu, Sabah, Malaysia	
GPS Reference <small>(in degree, minute & second)</small>	Latitude	005° 16' 21.50" N
	Longitude	118° 03' 12.40" E
Forecast Annual Output (MT)	CPO	53,236.19 mt
	PK	12,213.73 mt

	FFB	244,764.08 mt
--	------------	---------------

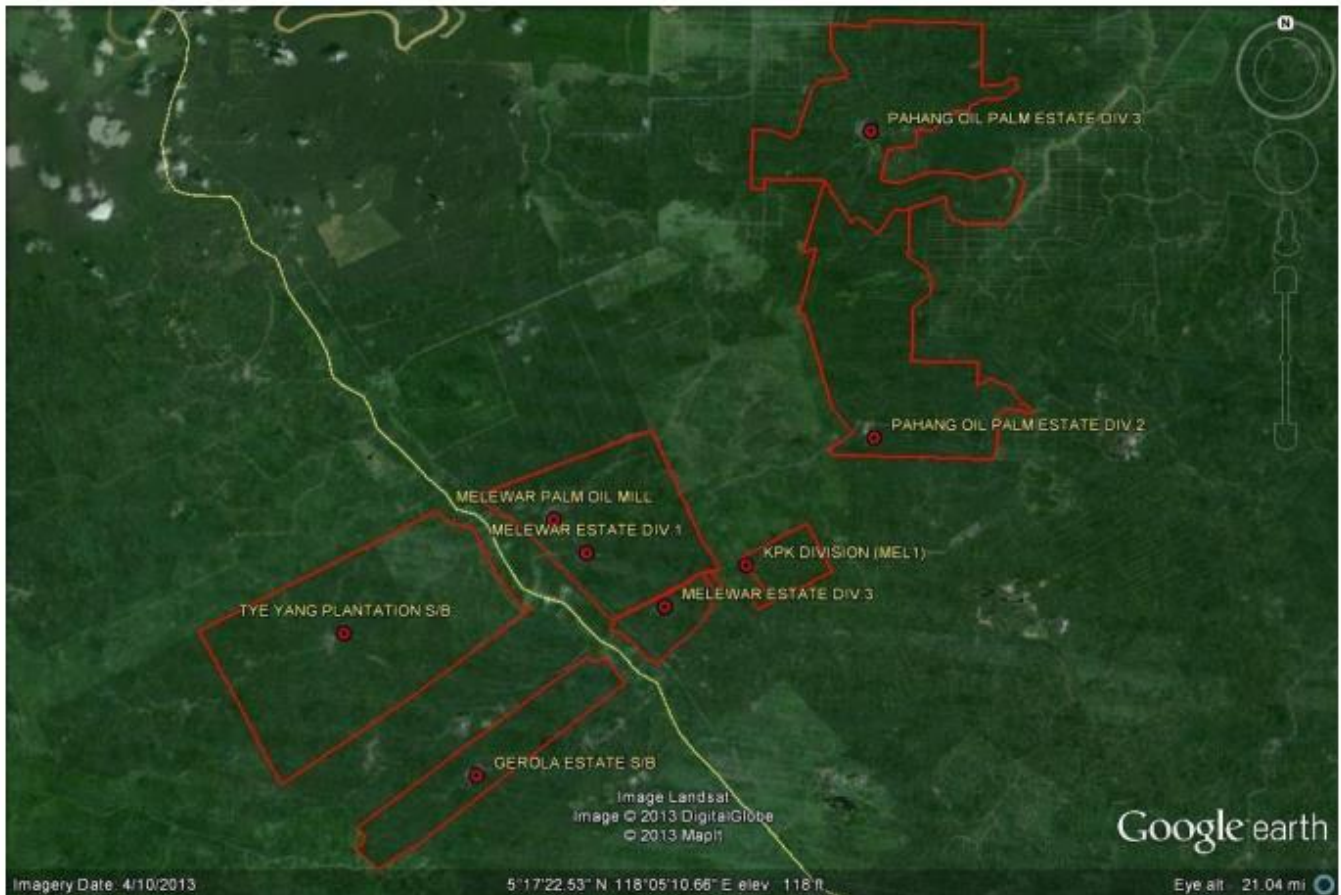
2. The Supply Base / Estates details are as follows:

No.	Estate / Member	Location	GPS Reference		Area Summary (Ha)		Annual FFB Forecast (MT)	Liability Status (L/NL)	Date join (for ISH)
			Latitude	Longitude	Total Area to be Certified	Planted Area			
1.	Gerola Estate	CL 095310919, Mukim Sg. Kinabatangan, Malaysia	005° 12' 18.74" N	118° 2' 4.56" E	1,587.40	1,403.37	17,790.00	NL	N/A
2.	Tye Yang Estate	CL 095311407, Mukim Sg. Kinabatangan, Malaysia	005° 14' 33.03" N	117° 59' 58.59" E	3,759.90	3,352.62	56,049.24	NL	N/A
3.	Melewar Estate 1	CL 095310400, Mukim Sg. Kinabatangan, Malaysia	005° 15' 49.11" N	118° 3' 48.66" E	2,323.18	1,978.42	40,950.80	NL	N/A
4.	Pahang Oil Palm 2 Estate	CL 095317285, 17490, 17516, 17507, Kinabatangan, Malaysia	005° 17' 37.88" N	118° 8' 21.87" E	2,671.80	2,393.50	23,737.04	NL	N/A
5.	Pahang Oil Palm 3 Estate	CL 095317285, 17534, 17525, 25983, Kinabatangan, Malaysia	005° 22' 27.72" N	118° 8' 18.62" E	2,619.30	2,391.11	25,740.00	NL	N/A
6.	Pelita Estate	CL 115397496, Mukim Ulu Tungku, Lahad Datu, Sabah, Malaysia	005° 08' 47.56" N	118° 56' 00.41" E	1,694.70	1,580.65	26,840	NL	N/A
7.	Muis Melewar Plantation 1	CL 105426784, Tawau, Sabah, Malaysia	004° 27' 33.26" N	117° 50' 54.19" E	2,320.00	2,056.01	25,600	NL	N/A
8.	Muis Melewar Plantation 2	CL 245360523, Mukim Sungai Binuang, Ulu Tingkayu, Kunak, Sabah, Malaysia	004° 39' 51.43" N	117° 54' 07.83" E	1,793.00	1,481.00	28,039	NL	N/A
TOTAL					18,769.28	16,636.68	244,746.08		

Note: L – with Liability; NL – No Liability

The Supply Base to this certification does not involve new development. Consequently, there is no NPP process.

3. Location of management unit



BSI Services Malaysia Sdn. Bhd. is accredited to provide independent, third-party RSPO P&C and RSPO SCCS certification services. BSI Malaysia is a subsidiary of BSI Group, a Royal Charter Company. BSI is the world’s Trusted brand in providing business improvement solutions with more than 86,000 clients in over 193 countries. BSI’s mission is to share knowledge, innovation and best practice to help people and organizations make excellence a habit. BSI is the U.K.’s National Standards Body. BSI Services Malaysia Sdn. Bhd. has RSPO affiliate offices in Indonesia, Australia, China and India.

The audit team for this audit will consists the following:

Audit Team	Role/Area of Requirement	Qualification and Experience
Valence Shem	Team Leader Occupational health and safety, operation procedure, organization commitments, legal compliance, long term economy plan, time bound plan, supply chain for mill	<ul style="list-style-type: none"> - Holds a Bachelor Degree in Industrial Technology, University of Science Malaysia. - More than 9 years of working experience in the oil palm plantation industry. - He has been in the management system auditing line since 2009 for various standards, such as ISO 14001, RSPO P&C, RSPO SCCS and SMETA. - Successfully completed the ISO 9001 Quality Management System Lead Auditor Course, ISO 14001 Lead Auditor Course, ISO 45001 Lead Auditor Training, Endorsed RSPO P&C Lead Auditor Course, Endorsed RSPO SCCS Lead Assessor Course, MPOB MSPO training,

		MSPO SCCS Auditor Training Course, HCV-HCS Training, and SMETA Requirements Training.
Mohd Razaleigh bin Mohamad	Team Member Social aspect and workers welfare, worker consultation, stakeholder consultation, impact assessments, policies, supply chain for mill	<ul style="list-style-type: none"> - Holds a Bachelor of Science in Plantation Technology and Management from Universiti Teknologi MARA. - More than 5 years of working experience in oil palm plantation. - He has been in the sustainability auditing line since 2017 for various standards such as RSPO, MSPO, and Global G.A.P. - Successfully completed the ISO 9001 Quality Management System Lead Auditor Course, ISO 14001 Lead Auditor Course, ISO 45001 Lead Auditor Training, Endorsed RSPO P&C Lead Auditor Course, Endorsed RSPO SCCS Lead Assessor Course, MSPO Auditor Training Course, MSPO SCCS Auditor Training Course, and Social accountability (SA8000).
Amir bin Bahari	Team Member Best Management Practice for Mill and Estate, environment aspect, GHG & HCV, continuous improvement	<ul style="list-style-type: none"> - He obtained qualification in B.Sc. (Hons) Chemistry USM 1985 & Diploma in Palm Oil Milling Tech/Management MPOB 1996. - More than 30 years of experience in the oil palm estates and palm oil mills. - Successfully completed the ISO 14001 Lead Auditor Course and Endorsed RSPO P&C Lead Auditor Course.

In preparation for the assessment, related stakeholders are invited to provide written input regarding this assessment by commenting on related aspects to the certification unit. Topics that you may wish to comment on are as follows but not limited to:

- Environmental Protection & conservation
- Human rights & workers welfare
- Opportunity for employment
- Company approach to community development
- Your relationship with the company
- Participation in decision making
- Free, prior and informed consent
- Suggestion for improvement

Comments that are received within 30 days from the date of this letter will be considered in the Assessment. Please include the following details in case we may need to contact you for clarification or follow-up on any issue raised by you.

Name: Email:
 Position: Phone Number:

If you wish your comments to be treated confidentially or to remain anonymous, please mark your reply "CONFIDENTIAL". You may direct your comments to:

Scheme Manager:

Dr. Chaiyaporn Seekao
 BSI Services Malaysia Sdn. Bhd.
 Suite 29.01 Level 29 The Gardens North
 Tower, Mid Valley City Lingkaran Syed Putra
 59200 Kuala Lumpur
 Federal Territory, Malaysia
 Fax : +603 9212 9639

AND / OR

Auditee:

Mr. Seow Chee Chiang
 J.C. Chang Holdings Sdn. Bhd.
 Unit 30-01, Level 30, Menara Landmark
 No. 12, Jalan Ngee Heng
 80000 Johor Bahru
 Johor, Malaysia
 Fax : +607 224 1546



Inspiring trust for a more resilient world.

Email : chaiyaporn.seekao@bsigroup.com

Email : seowcc@jcc.com.my

We thank you and appreciate for your comments.

Yours sincerely,

.....
Dr. Chaiyaporn Seekao
Technical and Compliance Manager - Food (RSPO)