



RSPO NOTIFICATION OF PROPOSED NEW PLANTING

This notification shall be on the RSPO website for 30 days as required by the RSPO procedures for new plantings (<http://www.rspo.org/?q=page/535>). It has also been posted on local on-site notice boards.

Date of notification:

Tick whichever is appropriate

<input type="checkbox"/>	This is a completely new development and stakeholders may submit comments.
<input checked="" type="checkbox"/>	This is part of an ongoing planting and is meant for notification only.

COMPANY: GOODHOPE ASIA HOLDINGS Ltd.

SUBSIDIARY (If any): PT. AGRO INDOMAS (EAST KALIMANTAN)

RSPO Membership No.: 1-0175-14-000-00

Location of proposed new planting: description or maps and GPS coordinates.

PT. Agro Indomas East Kalimantan (PT. AIEK) is located in District of Sepaku, Penajam Paser Utara, East Kalimantan Province and surrounded by some villages: Pemaluan, Bumi Harapan, Sukaraja, and Tengin Baru. PT Agro Indomas East Kalimantan obtained its location permit based on Head of Penajam Paser Utara Decree No. 460.1/129/BPN-44.4/2004 covering around 17.500 ha. Location Permit was already revised and extended several times. The last extension of location permit was obtained on year 2010 with decree No. 545/049-INLOK/1/2010 in 18 January 2010 covering about 5.151 ha area, and it had been revised again with the decree of Penajam Paser Utara No. 522/193-INLOK/EKONOMI/VII/2011 in 5 July 2011 and covering about 6.767 ha area. Based on Provincial Land Use Spatial Plan, all of the location permit of PT. AIEK is under Non-Forest Development Area (KBNK) status, means this area can be developed as a palm oil plantation. Otherwhile based on decree of ministry of forestry, the location permit of PT. AIEK is a part of Other Land Use (APL) and Forest Production Areas (HP). For the area which is under Forest Production Areas status, PT. AIEK still on going progress to obtain a forest release permit in the term of cadastral mapping with a review of forest areas against PT. AIEK location permit based on Letter from The Central Forest Region IV (BPKH),

Ministry of Environmental and Forestry, No. S.25/BPKH IV-2/ 2015 dated 14 January 2015. PT AIEK did not need logging permit, because the potential logging timber less than 20% within PT AIEK Location Permit and the land had already cleared prior to the issuance of IPK regulation from Minister of Forestry.

PT. AIEK has conducted a Social and Environment Impact Assessment (AMDAL). The AMDAL document was approved by The Regent of Penajam Paser Utara through the Decree No. 660/342/2009 dated 15 December May 2009. PT. AIEK has also conducted High Conservation Value (HCV) identification and Social Impact Assessment (SIA) The HCV and SIA assessment had been conducted by the Faculty of Forestry, Institut Pertanian Bogor (IPB), Consultants Team; the key consultants conducting these assessments are approved by the RSPO. The combination of AMDAL together with HCV and SIA provides the geographical information of the area, the biodiversity and natural resources, the required best management practices and therefore provides the management with the platform on which the management plans for new planting will be based on.

The High Conservation Value Area (HCVA) Assessment of PT. AIEK was prepared by Assessor from Faculty of Forestry, Institut Pertanian Bogor (IPB). The team was consist of 4 (Four) RSPO-Approved assessors and led by Ir. Nyoto Santoso, MS. The assessment was carried out from October to November, year 2009; The locations of study has includes Pemaluan, Bumi Harapan, Sukaraja and Tengin Baru Villages. Methodology of HCV identification was in accordance with the Toolkit for the High Conservation Values Identification in Indonesia version 2 (2008) and the RSPO Principles and Criteria. The HCVA assessment result has identified that there is no primary forest the location permit of PT AIEK. The result has also identified there are 7 (seven) type of HCVA in the PT AIEK's concession, namely HCV1 (HCV1.1 and HCV1.3), HCV2 (HCV2.2 an HCV 2.3), HCV3 and HCV4 (HCV4.1 and HCV4.3) with total HCVA 2270,27 Ha (33,55%) of PT. AIEK concession area.

PT. AIEK has already conducted Social Impact Assessment (SIA) on the year 2009. The SIA Assessment was prepared by consultant team from Faculty of Forestry, Institut Pertanian Bogor. The assessor team was consisted of 8 (eight) persons and led by Ir. Nyoto Santoso. The result of this assessment identified that PT. Agro Indomas-East Kalimantan influence positive impact to the surrounding community such as realization of plasma program, employment opportunity, better social facility and improvement for the quality and facility of clean water. The SIA assessment has also recommended for the company to involves Government officials, customary leaders, land owners or cultivated land owners in the compensation process, and the corporate social activity's plan should be focused to

develop public villages facilities and other productive activities. The assessment has found that the company identified local people lands and implemented concept of FPIC process before carrying out land compensation.

List Of Abbreviation

BPN = National Land Authority

CSR = Corporate Social Responsibility

EHS = Environmental, Health and Safety

EIA = Environmental Impact Assessment (*Analisis Mengenai Dampak Lingkungan*)

FGD = Focus Group Discussion

FPIC = Free, Prior, Inform, Consent

HCV = High Conservation Value

HGU = Land Use Title (*Hak Guna Usaha*)

HTI = Industrial Plantation Forest (*Hutan Tanaman Industri*)

IPB = Bogor Agricultural University (*Institut Pertanian Bogor*)

IUP = Plantation Business Permit (*Izin Usaha Perkebunan*)

KBK = Forest Cultivation Area

KBNK = Non-Forest Cultivation Area

MCK= Public Toilet (*Mandi Cuci Kakus*)

NGO = Non-Governmental Organization

NPP = New Planting Procedure

PMA = Foreign Investment (*Penanaman Modal Asing*)

PT. AIEK= PT. Agro Indomas East Kalimantan

RSPO = Roundtable on Sustainable Palm Oil

SIA = Social Impact Assessment

Table 1. The Geographical location of PT. AIEK

Description	Explanation
Company name	PT. Agro Indomas
Subsidiary of	Goodhope Asia Holdings Ltd.
RSPO Membership Number	1-0175-14-000-00
Contact Person	Wilton Simanjuntak Email: wiltons@goodhope-id.com
Company address	Menara Global, 5th Floor, Jl. Jend. Gatot Subroto Kav. 27 Jakarta 12950
Site Location	115 ⁰ 40'00" – 115 ⁰ 50'00" E 0 ⁰ 45'00" – 1 ⁰ 20'00" S
Altitude	25-50 m asl
Government administrative jurisdiction	- Subdistrict of Sepaku - Penajam Paser Utara Regency, - East Kalimantan Province
Watershed (WS) zonation	WS of Tunan Manggar
Boundaries: 1. Pemuatan Division a. Northern side b. Eastern side c. Southern side d. Western side	a. Mangrove Forest Area and Bumi Harapan Village b. Mangrove Forest Area c. Mangrove Forest Area, Industrial Plantation Forest (HTI) PT. ITCI Hutani Manunggal, Maridan Village d. Industrial Plantation Forest (HTI) PT. ITCI Hutani Manunggal
2. Sisipan Division a. Northern side b. Eastern side c. Southern side d. Western side	a. Sukaraja Village b. Forest Cultivation Area (KBK) and Wonosari Village c. Mangrove Forest Area and Bumi Harapan Village d. Mangrove Forest Area and Bumi Harapan Village
3. Loa Haur Division a. Northern side b. Eastern side c. Southern side d. Western side	a. Forest Development Area (KBK) b. Karang Jinawi Village c. Tengin Baru Villlage d. Forest Development Area (KBK) and Non-Forest Development Area (KBNK)



Figure 1. PT. AIEK Location in the Indonesian Region



PT AIEK Location in Kalimantan Island



0 25 50 100 150 KM

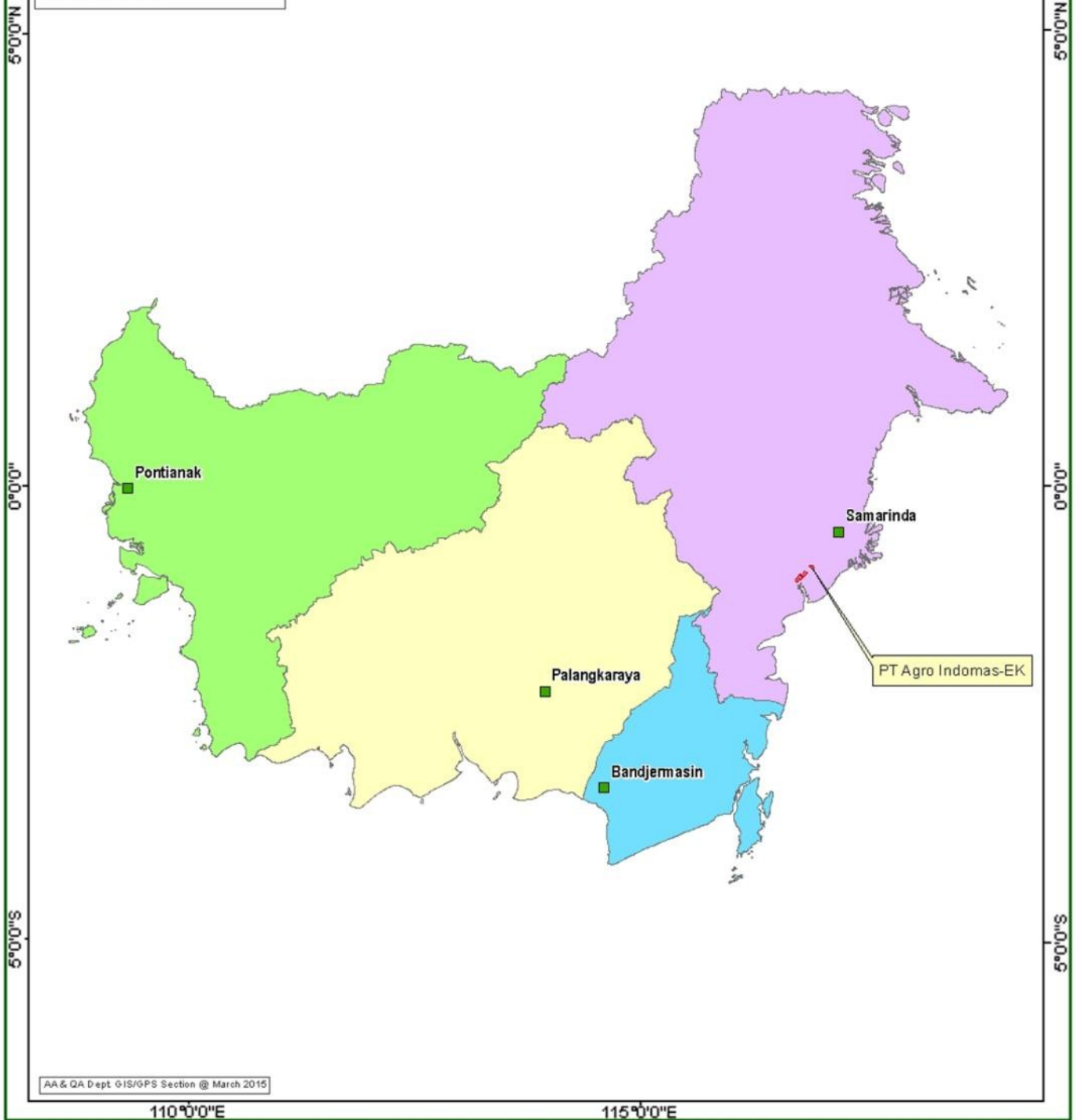
110°0'0"E

115°0'0"E

Legend

- Ibu kota provinsi
- Kalimantan Barat
- Kalimantan Selatan
- Kalimantan Tengah
- Kalimantan Timur

Source Map :
PTAIEK Geodatabase



AA & QA Dept GIS/GPS Section @ March 2015

Figure 2. PT. AIEK Location in the Kalimantan Island

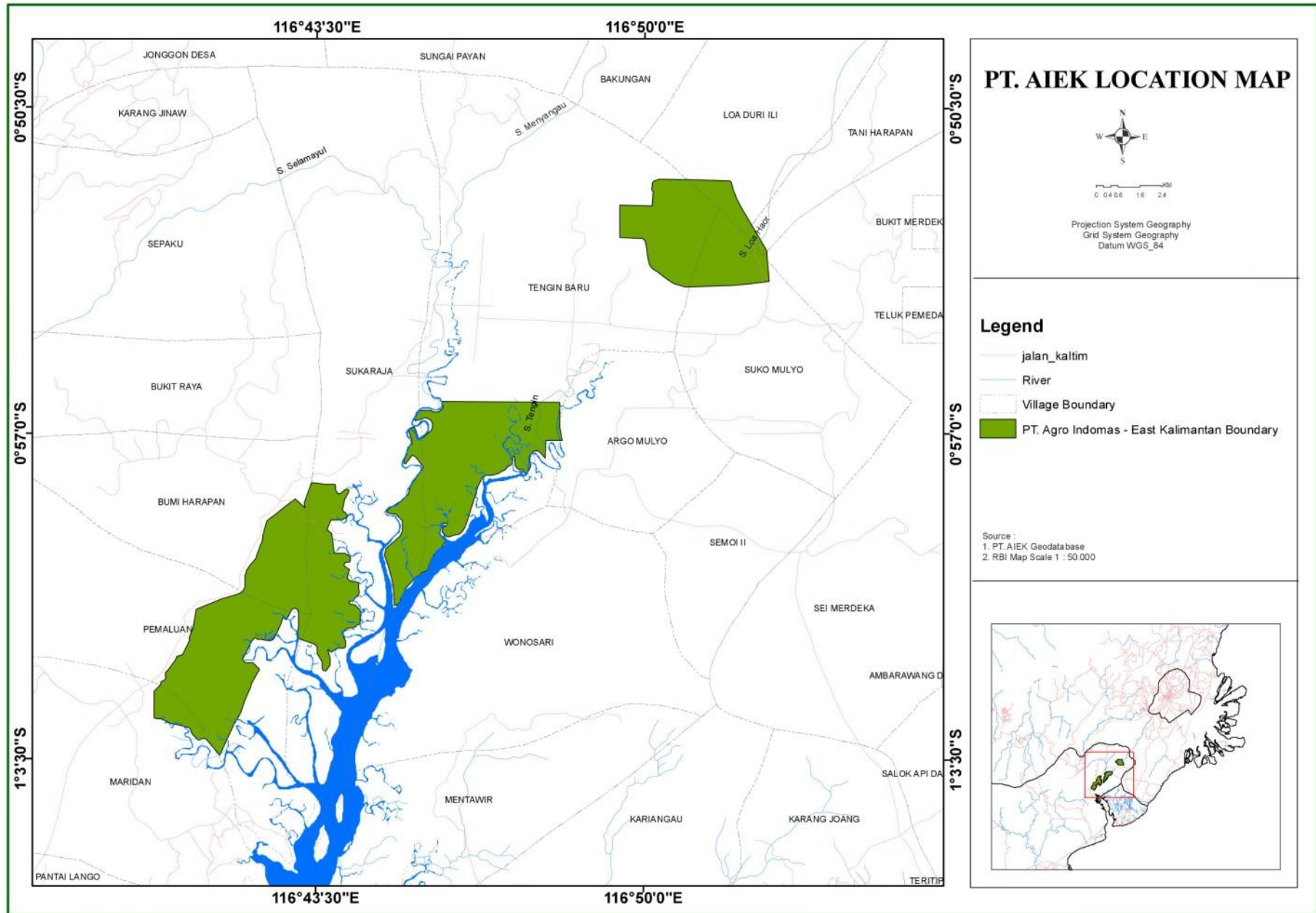
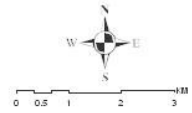


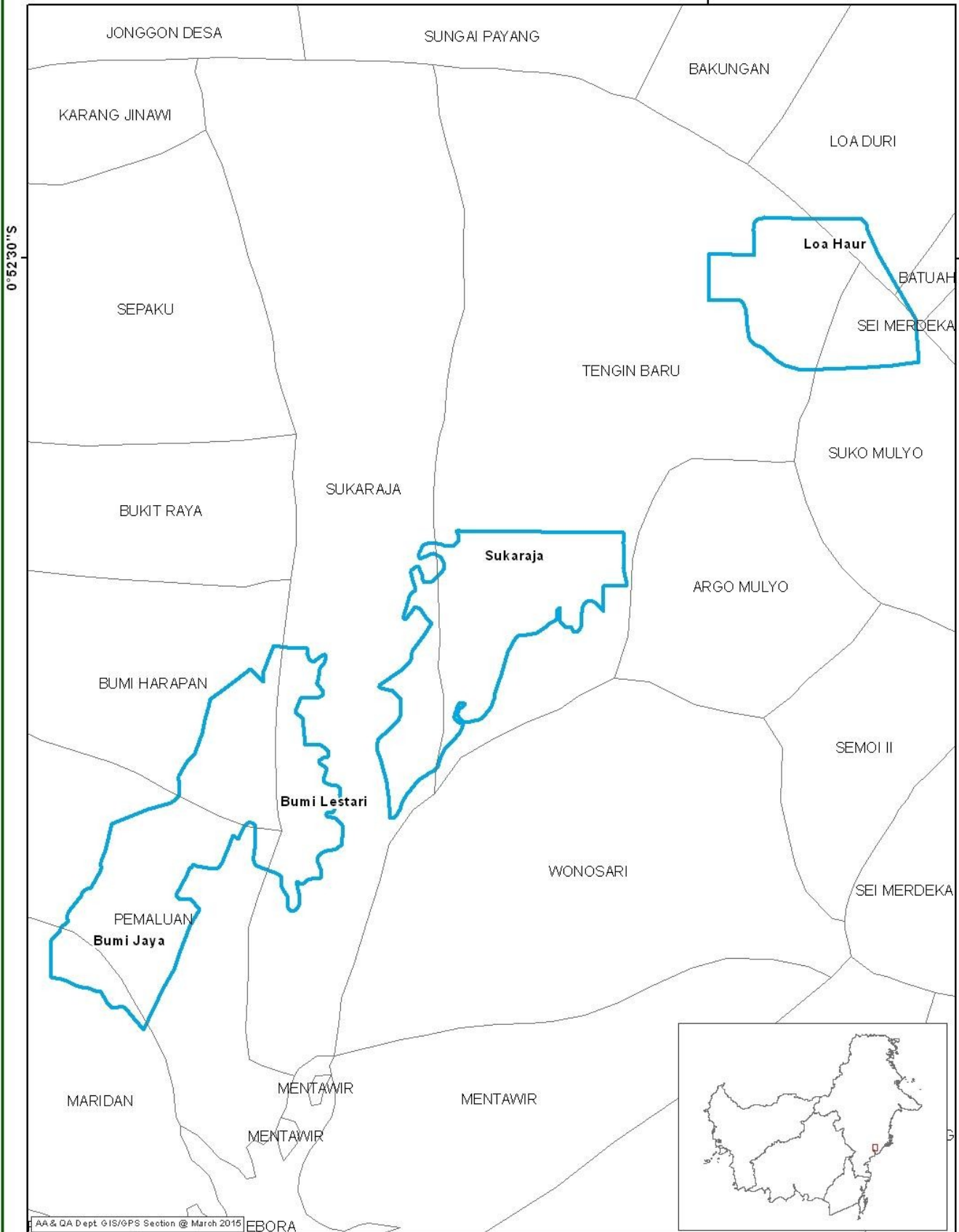
Fig 3. Map of PT. AIEK Location in Penajam Paser Utara Regency, East Kalimantan



MAP OF SURROUNDING ENTITIES PT AIEK



116°49'30"E



AA & QA Dept. GIS/GPS Section @ March 2015

116°49'30"E

Fig 4. Map of PT. AIEK Location with surrounding entities

II.2. List of Legal Documents and regulatory permits related to new development

The List of Legal Documents and regulatory permits related PT. AIEK new development planting procedure presented on following table.

Table 2. List of legal documents and regulatory permits related PT. AIEK new development

No.	License and Recommendation	Issued By	Number	Note
1.	Deed of Establishment	Notary Enirmaya Agoes Suwarno, SH	No. 69	28 th September 1995
2.	Location Permit	Head of Penajam Paser Utara	No. 460.1/129/BPN-44.4/2004 with total area 17.500 Ha	06 July 2004
3.	Revised of Location Permit	Head of Penajam Paser Utara	No. 460.1/437/Tu-Pim/702/Eko/VII/2007 with total area 5.796 Ha	07 July 2007
4.	Revised of Location Permit	Head of Penajam Paser Utara	No. 500/218/ Ekonomi/ VII/2008 with total area 5.151 Ha	07 July 2008
5.	Revised of Location Permit	Head of Penajam Paser Utara	No. 545/049- INLOK/EKONOMI/I/2010 with total area 5.151 Ha	18 January 2010
6.	Plantation Business Permit (IUP)	Head of Penajam Paser Utara	No. 11 Year 2006 with total area 5.796 Ha	20 December 2006
7.	Environmental Permit	Head of Penajam Paser Utara	No. 660/342/2009	15 December 2009
8.	Environmental Permit	Head of Penajam Paser Utara	No. 660.1/199/2015 with total Area 6.767 Ha	28 th May 2015
9.	Revised of Location Permit	Head of Penajam Paser Utara	No. 522/193- INLOK/EKONOMI/VII/2011 with total area 6.767 Ha	05 July 2011
10.	Review of Forest Area Against PT. AIEK Location Permit	The Central Forest Region IV (BPKH), Ministry of Environmental and Forestry	No. S.25/BPKH IV-2/ 2015	14 January 2015

Area of New Plantings and Time-plan for New Plantings

PT AIEK proposed new planting area in the area of this Location Permit. At the time of this report made, the company is in ongoing activities for clearing and planting. The company started planting since the March, year 2007, and 1.747,85 Ha has been planted until 2009. Beginning from the year 2010, company had practiced selective planting for 878,7 Ha without endangering identified HCV area. The process of land development and planting have followed the RSPO New Planting Procedures (NPP). Company still have land within its location permit to develop in the future with total of area is 1.355,18 Ha and there is no identified HCV and forest production areas being included in the new proposed development plan (see the new planting plan map below-Fig 7).

The company also had already develop plasma area in its existing planted areas with total size around 315 Ha, which consists of 130 Ha plasma located in the Loa Haur Division and 185 Ha located in the Bumi Lestari Division (see figure 5). Furthermore, there will be an additional plasma area around +-64 Ha included in the proposed new planting plan area. The Detail of new planting area is showed in the following table and figure.

Table 2. PT. AIEK Planting Area in the 2007-2009 Periods

PT. AIEK Concession	Year				Total (Ha)
	2006	2007	2008	2009	
6.767	-	673,46	289,94	784,45	1.747,85

Table 3. Time plan for New Planting in PT AIEK

PT. AIEK Concession	Year				Total (Ha)
	2010	2011	2012	2013	
6.767	603,59	121,50	145,98	7,63	878,70

Table 4. Summary of PT AIEK New Planting Plan Area

PT AIEK Concession (Ha)	PT AIEK Planted Area (Ha)	PT AIEK HCV Area (Ha)	PT AIEK New Planting Plan Area (2016-2020) (Ha)
6.767	2.626,55	2.270,27	1.355,18

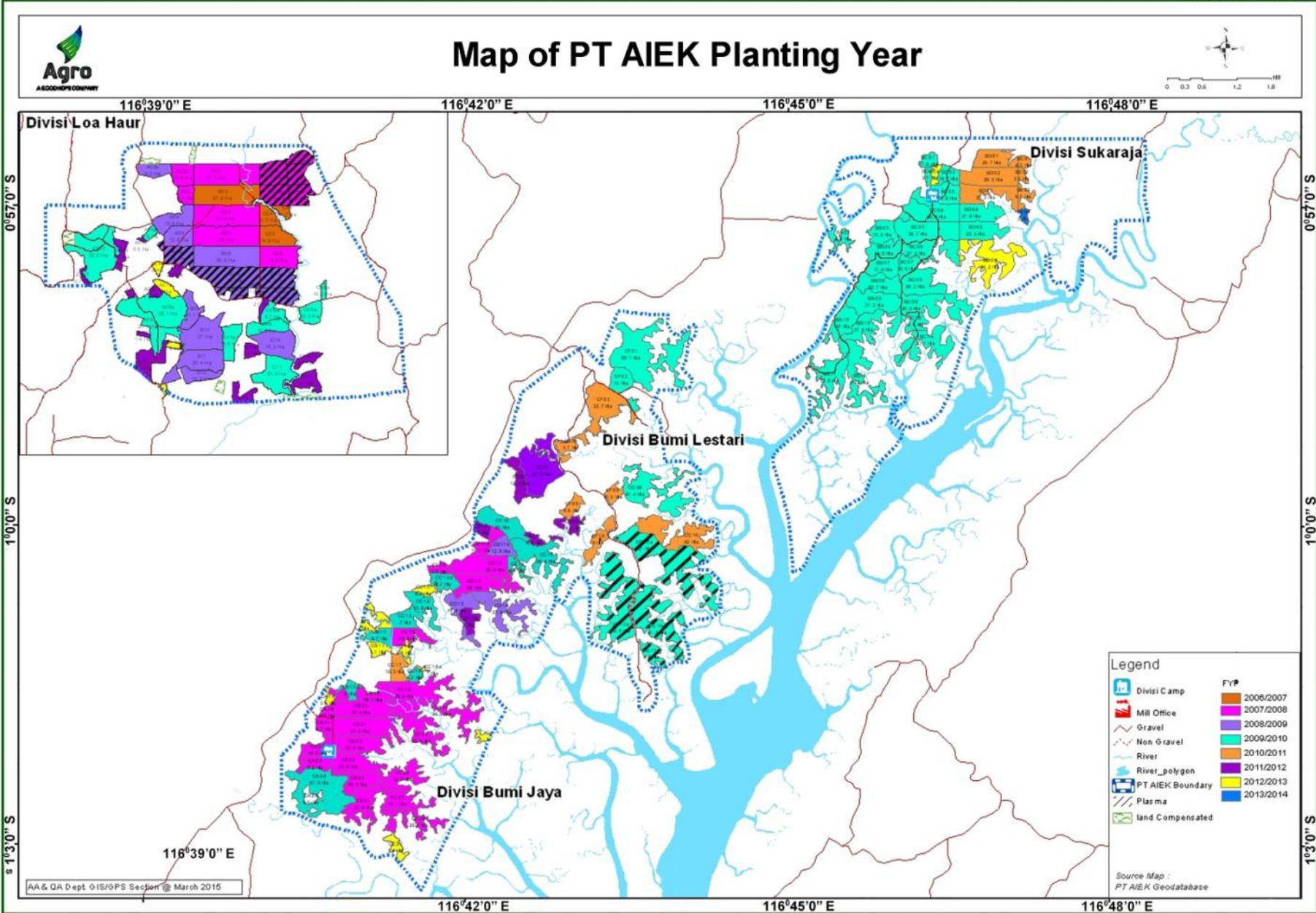
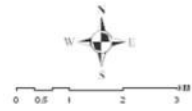


Figure 5. Maps of PT AIEK Planting Area



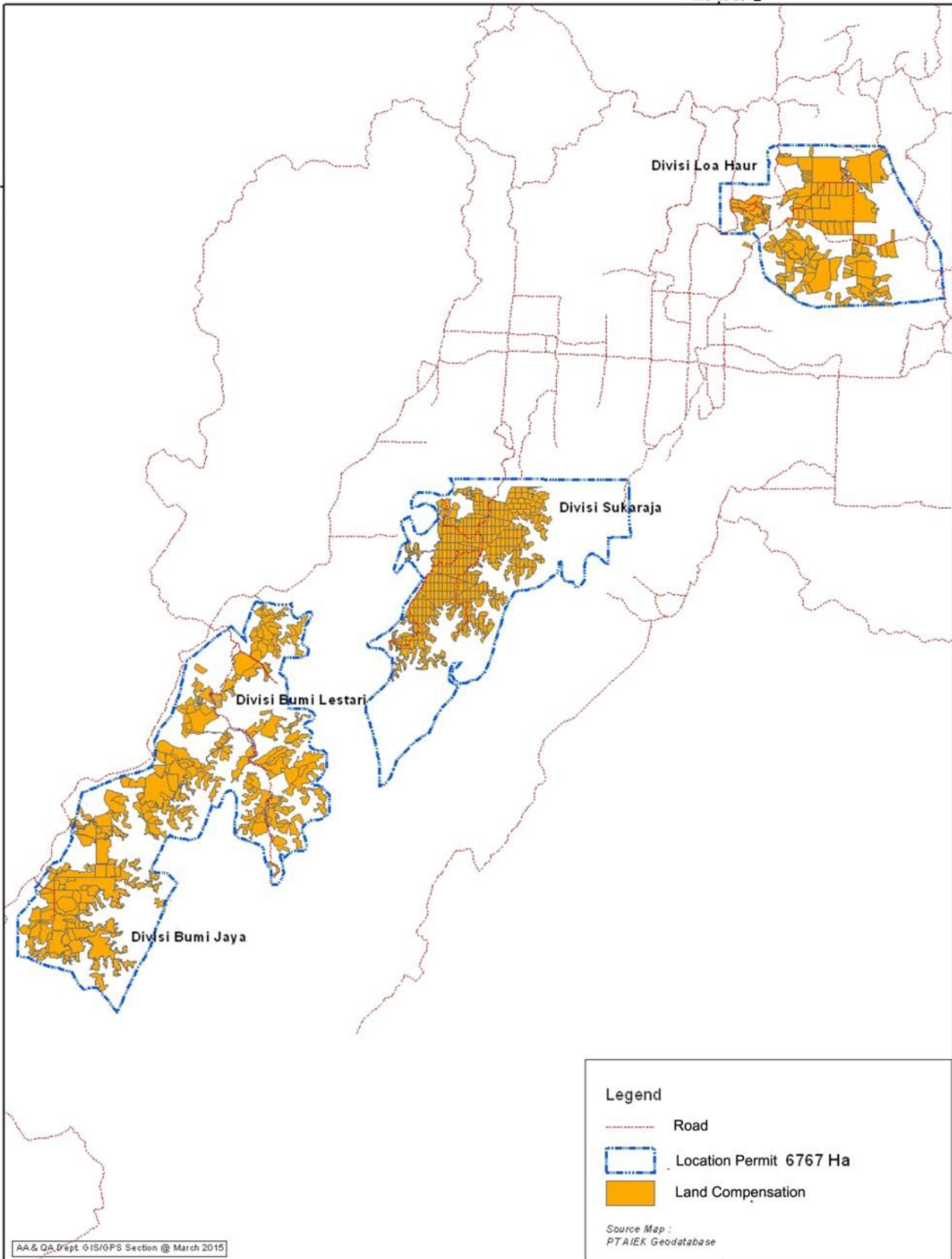
Land Compensation Map PT AIEK



116°49'30"E

0°52'30"S

0°52'30"S



AA & QA Dept. OIS/GPS Section @ March 2015

116°49'30"E

Figure 6. Maps of PT AIEK Land Compensation

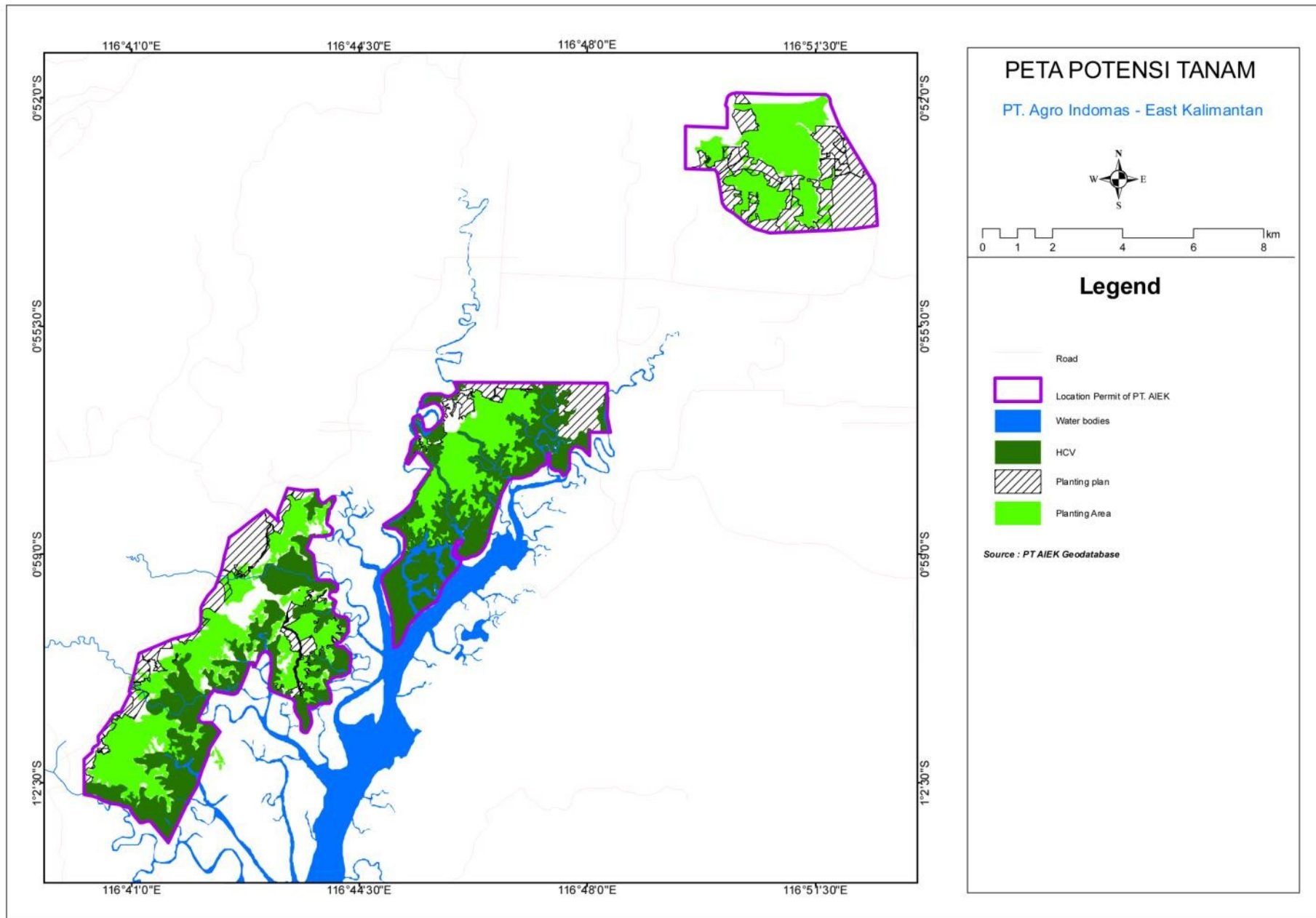


Figure 7. Map of New Planting Plan Area of PT AIEK

SUMMARY FROM SEI ASSESSMENTS:

PT. Agro Indomas East Kalimantan has conducted a Social and Environment Impact Assessment (AMDAL). The AMDAL was approved by The Regent of Penajam Paser Utara through the Decree No. 660/342/2009 dated 15 December May 2009. This assessment was involved primary and secondary data collection, field environmental sampling, and survey with purposive proportional sampling, terrestrial studies, stakeholders interview, land use and impact to surrounding community, socio-economic study, health and cultural aspects data collection and reference was made to the national, sector and regional regulations.

The Company has also conducted The Social Impact Assessment (SIA) prepared by Assessor from Faculty of Forestry, Institut Pertanian Bogor team (IPB). The team consist of 6 (six) assessors, led by Ir. Nyoto Santoso, MS. The assessment was carried out from 10- 20 October, year 2009. The locations of study has includes Pemaluan, Bumi Harapan, Sukaraja and Tengin Baru Villages. The result of the assessment was used as a guidance to develop social management plan. It is identified that PT. Agro Indomas East Kalimantan given a positive impact to the surrounding community such as realization plasma program, employment opportunity, better social facility and improvement for quality and facility for clean water.

Table 4. Team member of PT. AIEK SIA Assessor

No.	Name	Information
1.	Ir. Nyoto Santoso, MS	Team Leader
2.	Ir. Siswoyo	Member
3.	Handian Purwawangsa, S Hut, MSi	Member
4.	Udi Kusnidar, S Hut	Member
5.	Yanti Aprianti, S Pi	Member
6.	Sulfan Ardiansyah, S Hut	Member

Result of the SIA for PT. Agro Indomas East Kalimantan are shown below:

Table 2. The Result of PT. Agro Indomas East Kalimantan Social Impact Assessment

No.	Social Issue	Description
1.	Land Tenurial	<ul style="list-style-type: none">• Potential land tenure conflict among villagers are almost not found in all surrounding villages• Potential land conflict between company and community may be occurred in the land compensation and land clearing

No.	Social Issue	Description
		process
2.	Environmental	<ul style="list-style-type: none"> Most of surrounding villagers of PT. AIEK stated that the establishment of oil palm plantation by PT. Agro Indomas would not generate negative impact on the availability and quality of ground and river water.
3.	Socio Economics	<ul style="list-style-type: none"> Many local communities have not been absorbed as workers Unclear concept and realization of plasma program Local community lives with basic education background
4.	Socio Cultural	Acculturation has occurred between indigenous (Dayak) and immigrant community but there were still potential horizontal land conflict among them especially related to land tenure for ancestor land in Sukaraja Village
5.	Regional and Community Development	Local community expect to the company for provide clean water facilities and improve village public facilities and educational facilities

The SIA assessment were also recommended that (1) Government officials, customary leaders, land owners or cultivated land owners should be involved at land compensation process, (2) Corporate social activity's plan should be focused on the development of public villages facilities and other productive activities.

SUMMARY FROM HCV ASSESSMENT(S):

The High Conservation Value (HCV) Assessment of PT. Agro Indomas East Kalimantan was prepared by Assessor from Faculty of Forestry, Institut Pertanian Bogor (IPB). The team was consist of 4 (Four) RSPO-Approved assessors and led by Ir. Nyoto Santoso, MS. The assessment was carried out from October to November, year 2009; The locations of villages studied included Pemaluan, Bumi Harapan, Sukaraja and Tengin Baru. The methods of HCV area identification were accordance with a Toolkit for Identification High Conservation Values in Indonesia version 2 (2008) and RSPO Principles and Criteria. The result of HCV assessment of PT. Agro Indomas East Kalimantan were identified 7 (seven) type of HCVA, namely HCV1 (HCV1.1 and HCV1.3), HCV2 (HCV2.2 an HCV 2.3), HCV3 and HCV4 (HCV4.1 and HCV4.3) with total HCVA 2270,27 Ha (33,55% of PT. AEIK concession area. The next following table show HCV Assessment result of all PT. AIEK Area.

Table 7. Team member of PT. AIEK HCVA Assessor

No.	Name	Information
1.	Ir. Nyoto Santoso, MS	Team Leader
2.	Ir. Siswoyo	Member
3.	Sutopo, S Hut	Member
4.	M. Sayyidina Ali, AMD	Member
5.	Handian Purwawangsa, S.hut, MS	Member

Loa Haur Division

Table 8. Results of Identification and Analysis of Existence of HCV1 to HCV6 in the Areas of Loa Haur Division, PT. AIEK

Componen of HCV	HCV Existence	HCVA	Size (Ha)
HCV1. Areas with Important Levels of Biodiversity			
HCV1.1. Areas that Contain or Provide Biodiveristy Support Functions to Protection or Conservation Areas	Present	Mentoyo River	19,58
HCV1.2. Critically Endangered species	Absent	-	-
HCV1.3. Areas that Contain Habitat for Viable Population of Endangered, Resticted Range or Protected Species	Present	Mentoyo River	*)
HCV1.4. Areas that Contain Habitat of Temporary Use by Species or Congregations of Species	Absent	-	-
HCV2. Natural Landscape & Dynamics			
HCV2.1. Large Natural Landscape with Capacity to Maintain Natural Ecological Processes and Dynamics	Absent	-	-
HCV2.2. Areas that Contain Two or More Contiguous Ecosystems	Absent	-	-
HCV2.3. Areas that Contains Representative Population of Most Naturrally Occuring Species	Present	Mentoyo River	*)
HCV3. Rare or Endangered Ecosystem	Absent	-	-
HCV4. Environmental Services			
HCV4.1. Areas or Ecosystems Important for the Provision of Water and Prevention of Floods for Downstream Communities	Present	Mentoyo River	*)
HCV4.2. Areas Important for the Prevention of Erosion and Sedimentation	Absent	-	-
HCV4.3. Areas that Function as Natural Barriers to the Spread of Forest or Ground Fire	Absent	-	-
HCV5. Natural Areas Critical for Meeting the Basic Needs of Local People	Absent	-	-
HCV6. Areas Critical for Maintaining the Cultural Identity of Local Communities	Absent	-	-
Total of HCVA			19,58

Note: *) = the current width of the areas is the same as the previous size

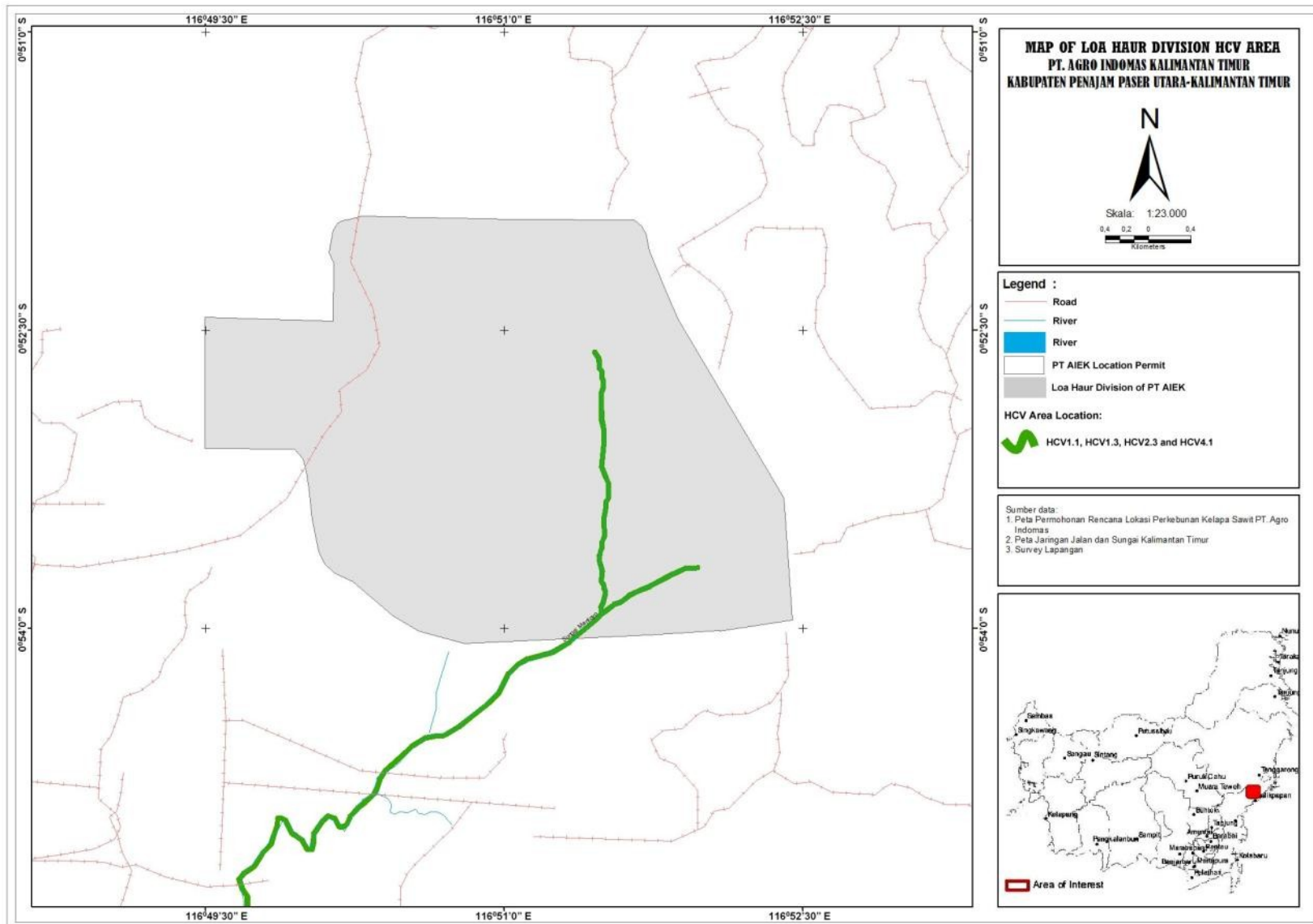


Figure 8. Map of Loa Haur Division HCV Area

Pemaluan Division

Table 9. Results of Identification and Analysis of Existence of HCV1 to HCV6 in the Areas of Pemaluan Division, PT. Agro Indomas East Kalimantan

Componen of HCV	HCV Existence	HCVA	Size (Ha)
HCV1. Areas with Important Levels of Biodiversity			
HCV1.1. Areas that Contain or Provide Biodiveristy Support Functions to Protection or Conservation Areas	Present	Pemaluan River	*)
		Semuntai River	*)
		Trunen River	
		Sabut River	*)
		Sabut River Creek	*)
		Trunen River Creek	*)
		Mangrove Area	*)
HCV1.2. Critically Endangered species	Absent	-	*)
HCV1.3. Areas that Contain Habitat for Viable Population of Endangered, Resticted Range or Protected Species	Present	Pemaluan River	1,44
		Semuntai River	5,34
		Trunen River	6,4
		Sabut River	Includes in Mangrove areas
		Sabut River Creek	Includes in Mangrove areas
		Trunen River Creek	Includes in Mangrove areas
		Mangrove Area	1.098,78
Mangrove Buffer/Ecoton	73,84		
HCV1.4. Areas that Contain Habitat of Temporary Use by Species or Congregations of Species	Absent	-	-
HCV2. Natural Landscape & Dynamics			
HCV2.1. Large Natural Landscape with Capacity to Maintain Natural Ecological Processes and Dynamics	Absent	-	-
HCV2.2. Areas that Contain Two or More Contiguous Ecosystems	Present	Mangrove Area ecotone	*)
HCV2.3. Areas that Contains Representative Population of Most Naturrally Occurring Species	Present	Pemaluan River	*)
		Semuntai River	*)
		Trunen River	*)
		Sabut River	*)
		Sabut River Creek	*)
Trunen River Creek	*)		

Componen of HCV	HCV Existence	HCVA	Size (Ha)
		Mangrove and Ecotone areas	*)
		Mangrove Buffer	*)
HCV3. Rare or Endangered Ecosystem	Present	Mangrove and Ecoton areas	-
HCV4. Environmental Services			
HCV4.1. Areas or Ecosystems Important for the Provision of Water and Prevention of Floods for Downstream Communities	Present	Semuntai River	*)
		Trunen River	*)
		Sabut River	*)
		Sabut River Creek	*)
		Trunen River Creek	*)
		Mangrove and Ecotone areas	*)
		Mangrove Buffer	*)
HCV4.2. Areas Important for the Prevention of Erosion and Sedimentation	Absent	-	-
HCV4.3. Areas that Function as Natural Barriers to the Spread of Forest or Ground Fire	Present	Mangrove area	*)
		Mangrove Buffer	*)
HCV5. Natural Areas Critical for Meeting the Basic Needs of Local People	Absent	-	-
HCV6. Areas Critical for Maintaining the Cultural Identity of Local Communities	Absent	-	-
Total of HCVA			1.185,8

Note: *) = the current width of the areas is the same as the previous size

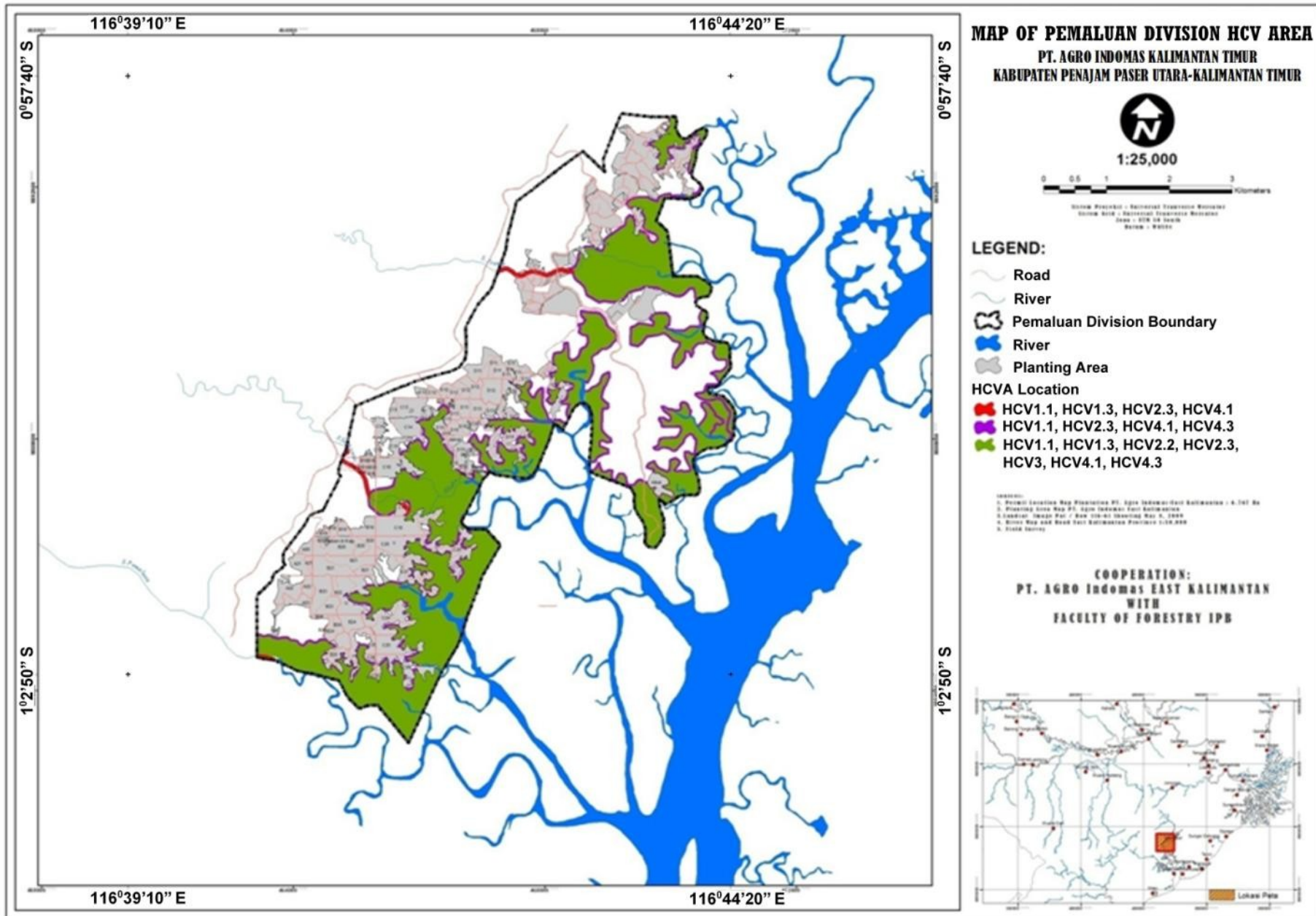


Figure 9. Map of Pemaluan Division HCV Area

Sisipan Division

Tabel 10. Results of Identification and Analysis of Existence of HCV1 to HCV6 in the Areas of Sisipan Division, PT. Agro Indomas East Kalimantan

Componen of HCV	HCV Existence	HCVA	Size (Ha)
HCV1. Areas with Important Levels of Biodiversity			
HCV1.1. Areas that Contain or Provide Biodiversity Support Functions to Protection or Conservation Areas	Present	Sepaku River	16,38
		Sambu River	8,85
		Semoi-1 River Creek	9,26
		Semoi-2 River Creek	0,7
		River in Block A11,B11	Includes in mangrove areas
		River in Block C11	Includes in mangrove areas
		Mangrove	967,55
HCV1.2. Critically Endangered species	Absent	-	-
HCV1.3. Areas that Contain Habitat for Viable Population of Endangered, Resticted Range or Protected Species	Present	Sepaku River	*)
		Sambu River	*)
		Semoi-1 River Creek	*)
		Semoi-2 River Creek	*)
		River in Block A11,B11	*)
		River in Block C11	*)
		Mangrove and Ecotone Areas	*)
		Mangrove Buffer	*)
HCV1.4. Areas that Contain Habitat of Temporary Use by Species or Congregations of Species	Absent	-	-
HCV2. Natural Landscape & Dynamics			
HCV2.1. Large Natural Landscape with Capacity to Maintain Natural Ecological Processes and Dynamics	Absent	-	-
HCV2.2. Areas that Contain Two or More Contiguous Ecosystems	Present	Mangrove Area Ecoton	*)
HCV2.3. Areas that Contains Representative Population of Most Naturally Occurring Species	Present	Sepaku River	*)
		Sambu River	*)
		Semoi-1 River Creek	*)
		Semoi-2 River Creek	*)
		River in Block A11,B11	*)
		River in Block C11	*)
		Mangrove and Ecotone Areas	*)
		Mangrove Buffer	*)
HCV3. Rare or Endangered Ecosystem	Present	Mangrove and Ecotone areas	*)
HCV4. Environmental Services			
HCV4.1. Areas or Ecosystems	Present	Sepaku River	*)

Componen of HCV	HCV Existence	HCVA	Size (Ha)
Important for the Provision of Water and Prevention of Floods for Downstream Communities		Sambu River	*)
		Semoi-1 River Creek	*)
		Semoi-2 River Creek	*)
		River in Block A11,B11	*)
		River in Block C11	*)
		Mangrove and Ecotone Areas	*)
		Mangrove Buffer	*)
HCV4.2. Areas Important for the Prevention of Erosion and Sedimentation	Absent	-	-
HCV4.3. Areas that Function as Natural Barriers to the Spread of Forest or Ground Fire	Present	Mangrove area	*) *)
HCV5. Natural Areas Critical for Meeting the Basic Needs of Local People	Absent	-	-
HCV6. Areas Critical for Maintaining the Cultural Identity of Local Communities	Absent	-	-
Total of HCVA			1.064,89

Note: *) = the current width of the areas is the same as the previous size

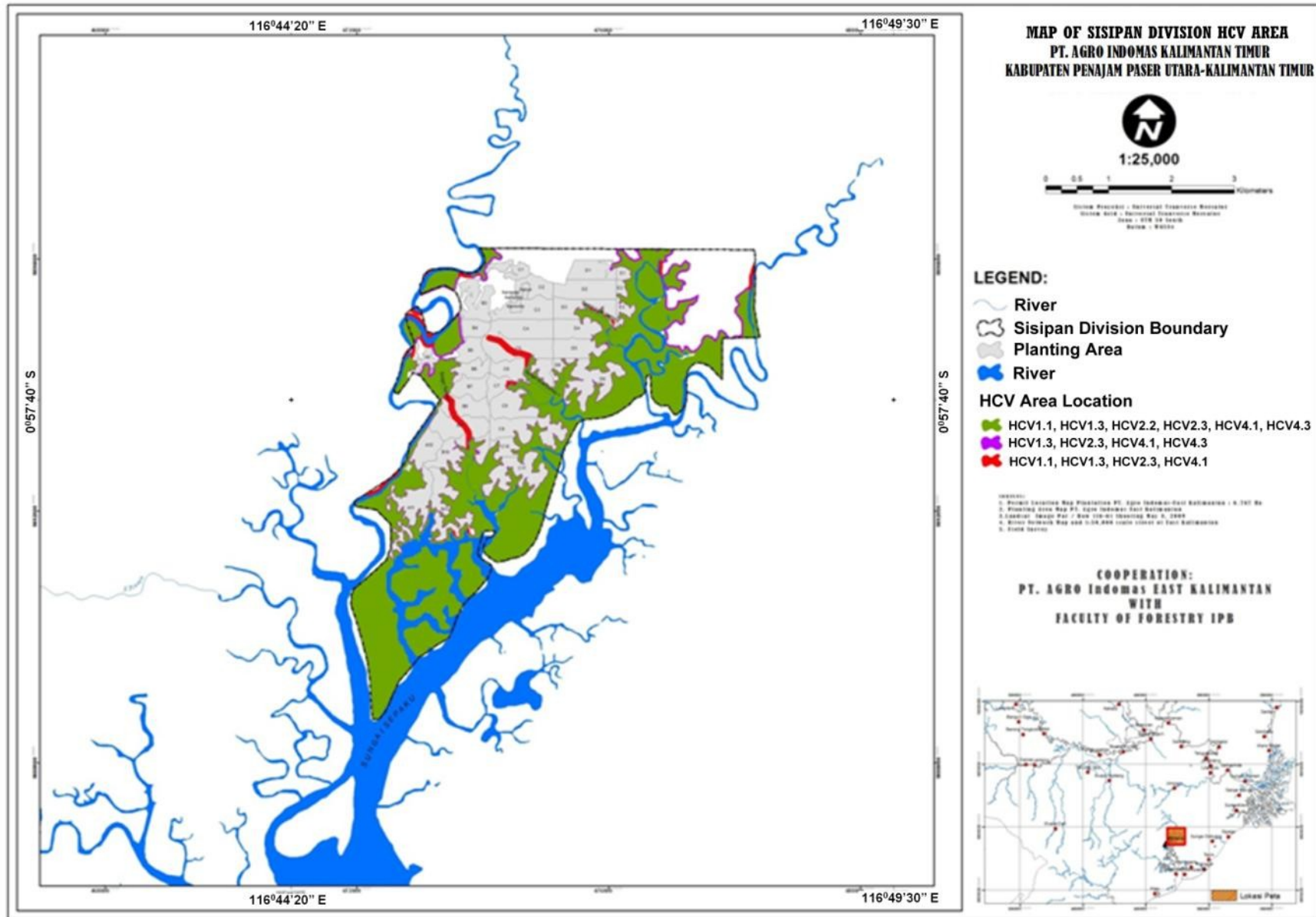


Figure 9. Map of Sukaraja (Sisipan) Division HCV Area

Summary of Management Plan:

a. Summary of HCV Area Management Plan

PT. Agro Indomas East Kalimantan has set up the management plan for managing and monitoring its HCV area. These includes management of riparian areas, wet lands conservation, protection for steep area and maintaining socio-cultural scared sites. PT. Agro Indomas East Kalimantan HCVA management plan activities include :

- Inventory and Identification of HCV Area
- Demarcation of HCVA boundaries.
- Boundaries pole maintenance.
- Flora and Fauna Protection.
- Enrichment and Rehabilitation in the HCV Areas.
- Socialization about HCV to the local community.
- Employee Training.
- Development of the SOP of HCVA Management.
- Build an organization structure for HCVA Management
- Coordination with all related stakeholders

Monitoring of all HCV areas will be conducted once per year and will include: any disturbance to the riparian areas (for the disturbance of HCV area, it will take one per month), diversity of flora, diversity of fauna, changes to river and condition of any river, lake or water spring (see table 11).

Table 11. The summary of HCV Area management and monitoring plans

No	Program Plan	Activity	PIC	Time Plan
1	Peer Review HCV Document	<ul style="list-style-type: none"> Conduct a peer review for HCV document by independent competent reviewer 	EHS Department	2015
2.	HCV Area Management	<ul style="list-style-type: none"> Inventory and Identification of HCV Area 	EHS Department	2010
		<ul style="list-style-type: none"> Demarcation of HCV area boundaries 	EHS Department	2010
		<ul style="list-style-type: none"> Boundaries pole maintenance 	EHS Department	Every Year
		<ul style="list-style-type: none"> Flora and Fauna protection 	EHS Department	Start in the 2010
		<ul style="list-style-type: none"> Enrichment and rehabilitation 	EHS Department	Start in the 2010
		<ul style="list-style-type: none"> Socialization about HCV to local community 	EHS and CSR Department	Every Year
		<ul style="list-style-type: none"> Employee training 	EHS and HR Department	Every Year
		<ul style="list-style-type: none"> Develop a SOP for HCV Area management Build an organization structure for HCV Area management 	EHS Department	2010
<ul style="list-style-type: none"> Coordinate with all related stakeholder 	EHS and CSR Department	Start in the 2010		
3.	HCV Area Monitoring	<ul style="list-style-type: none"> Disturbance intensity of HCV area including fire hazard potential 	EHS Department	Every Month Start in the 2010
		<ul style="list-style-type: none"> Recent condition and density plant species biodiversity include protected and endangered species 	EHS Department	Every Month Start in the 2010
		<ul style="list-style-type: none"> Recent condition and density of wildlife species biodiversity include protected and endangered species 	EHS Department	Every Month Start in the 2010
		<ul style="list-style-type: none"> Realization of rehabilitation activity and percentage of rehabilitation coverage area 	EHS Department	Every Month Start in the 2010
		<ul style="list-style-type: none"> Change the width of the river River water quality 	EHS Department	Every Month Start in the 2010

b. Summary of Social Environment Management and Monitoring Plan

PT. Agro Indomas East Kalimantan has also social management plan document to build a harmonious relationship between company and surrounding community and it includes following program:

- Land tenure conflict mitigation
- Realization plasma program
- Improving Economic Quality of the Community
- Build and maintenance villages Infrastructure
- Improvement for Educational Quality of Surrounding Community
- Improvement for Health Quality of Village Community
- Develop a communication and network with all related stakeholders
- Environmental Management
- Improvement for a better employment

For the detail of social environment management plan is showed in the below table.

Table 12. The summary of PT. AIEK social environmental management and monitoring plans

No	Program	Management	Purposes	Output	Monitoring	PIC	Time Plan
1	Regulation Compliance	<ul style="list-style-type: none"> Propose Forest Area Release Permit from Ministry of Environmental and Forestry in the term of Cadastral Process Propose cadastral as a requirement in the Land Use Title process Propose to obtain "IUP-Pengolahan 	<ul style="list-style-type: none"> To comply with all Government of Indonesia's Regulation requirement of palm oil plantation development (includes the area of new proposed planting area +- 515 Ha) to resolve the overlapping land tenure by another entity 	All of required regulation regarding to palm oil development is comply (Forest Release permit, HGU, IUP-Pengolahan)	<ol style="list-style-type: none"> Meeting and coordination with Ministry of Environmental and Forestry Meeting and Coordination with National Land Authority (BPN) Regional Office and Head Office BPN Jakarta Meeting and Coordination with Penajam Paser Utara Government 	Land Expansion	2015-2018
2.	Land tenure conflict mitigation	<ul style="list-style-type: none"> Land inventory and mitigation for the claimed land of villagers that had been compensated by company 	To Identify location and size of local people's land inside PT AIEK location permit area.	<ol style="list-style-type: none"> Local people land ownership map for mitigating and resolving conflict process Land tenure conflict is solved 	<ol style="list-style-type: none"> Observation and interview with the land owner and the claimer Measuring and mapping area with involving village verification team Socialization the result of conflict resolution to surrounding community 	Public Relation, CSR Department, Conflict Mitigation and Prevention Manager	2010
3.	Realization Plasma Program	<ul style="list-style-type: none"> Inventory of location, size and land status for smallholders/ plasma's candidate 	To realize plasma program for surrounding communities	1. Document of location, size and land status for smallholders/	1. Continuous participatory communication with plasma cooperatives	CSR Department	2010

No	Program	Management	Purposes	Output	Monitoring	PIC	Time Plan
		<ul style="list-style-type: none"> Develop a participatory plasma program plan 		<p>plasma's candidate through a participative process</p> <p>2. Agreement between company and community in the process of plasma program development</p>	<p>and community</p> <p>2. Documentation of all participatory communication process and evaluation of the inputted information from plasma cooperatives</p>		
4.	Improving Economic Quality of Community	<ul style="list-style-type: none"> Conduct an economic potential analysis study for surrounding village community Capacity building of village community for developing entrepreneurship skill and alternative livelihoods Strengthen of Organizational and Institutional plasma Facilitate the potential and good willing youth for attend a training for their skill improvement on various aspects 	To improve economic quality and capacity of PT AIEK's surrounding communities	<p>1. Document of economic potential analysis of PT. AIEK's surrounding community</p> <p>2. Create an optimal income chance for surrounding community</p> <p>3. Provide an alternative business opportunity to the community</p>	<p>1. Focus Group Discussion (FGD)</p> <p>2. Descriptive evaluation of program</p>	CSR Department	2010-2015
5.	Infrastructure	<ul style="list-style-type: none"> Improvement the infrastructure of roads and bridges 	Provide better accessibility to village's community in order to support community economic activities	<p>1. The road and bridge can be used by the community all the time, includes in the rainy season.</p> <p>2. The community's economy can continue to running and increasing</p>	<p>1. Focus Group Discussion (FGD)</p> <p>2. Documentation of road and bridge construction progress</p>	CSR Department Civil Engineering	2012

No	Program	Management	Purposes	Output	Monitoring	PIC	Time Plan
6.	Improving Educational Quality of Surrounding Community	<ul style="list-style-type: none"> • Develop an educational plan, for all level; kindergarten, elementary, junior high school until senior high school. • Developing educational facilities • Provide the scholarship program for potential student of village community 	To improve PT. AIEK's surrounding communities education level and increase community's interest in the educational aspect	<ol style="list-style-type: none"> 1. Communities Educational Quality Strategic Development Plan Document 2. Better educational facilities in the PT AIEK surrounding villages 3. Increasing educational quality level of the communities 	<ol style="list-style-type: none"> 1. Collaboration with independent and competent educational consultant to review Educational Quality Strategic Development Plan 2. Field observation of communities educational interest 3. Documentation of educational facilities improvement progress 	CSR Department	Start in the 2010
7.	Improving Health Quality of Village Community	<ul style="list-style-type: none"> • Conduct a study for issues and problem analysis related to village community's health quality • Provide a periodic program for check and treatment of community • Socialization for hazardous disease to the community 	To increase public health service in the terms of improving community's health quality	<ol style="list-style-type: none"> 1. Decreasing of disease /infection case 2. Increase live expectation level 3. Increasing community's awareness regarding dangerous disease 4. Increase community's health quality level 	<ol style="list-style-type: none"> 1. Interview and field observation 2. Socialization for health program, 3. Provide Periodical health check & medicine 	CSR and EHS Department	Start in the 2010
8.	Build communication and network with all related stakeholders	<ul style="list-style-type: none"> • Regular meeting with all stakeholders • Publication on local mass media about company social activities 	To build a good relationship with all stakeholders includes surrounding community	<ol style="list-style-type: none"> 1. Good communication and coordination with stakeholders 2. Same perspective in the development of palm oil between stakeholders and PT 	<ol style="list-style-type: none"> 1. Focus Group Discussion (FGD) 2. Documentation of all stakeholders meeting 3. Make an evaluation and follow up activity of stakeholders 	CSR Department	2010

No	Program	Management	Purposes	Output	Monitoring	PIC	Time Plan
				AIEK management 3. Positive campaign in the surrounding community for company development	meeting result		
9.	Environmental Management program	<ul style="list-style-type: none"> • Evaluation of waste and pollution treatment • Maintaining and improving waste infrastructure • Monitoring river and air quality 	<ol style="list-style-type: none"> 1. To manage the waste which is generated from PT. AIEK operational activities 2. To comply with environmental regulation standard 	<ol style="list-style-type: none"> 1. All of generated waste of palm oil processing is comply with environmental regulation standards 2. Environmental management and monitoring report 	<ol style="list-style-type: none"> 1. Conduct water and air emission monitoring periodically 2. Documentation and evaluation of all environmental aspect data in the PT AIEK (Palm Oil Mill Effluent (POME), hazardous, solid waste data and etc) 	CSR and EHS Department	Every year, start in the 2010
10.	Employment improvement	<ul style="list-style-type: none"> • Improve employee understanding and knowledge about employment regulation • Upgrading the role and function of Labor Organization • Improve a health and safety work • Provide a Personal Protective Equipment Facility 	To improve knowledge and understanding about employment regulation, health and safety work	<ol style="list-style-type: none"> 1. Increasing the employees knowledge and understanding of employment regulation 2. Zero Labor Strike 3. Increasing role and function of Labor Organization 4. Decreasing work accident number 5. Labor regulation handbook 	<ol style="list-style-type: none"> 1. Regular Socialization and Focus Group Discussion with labor organization and employee regarding to labor regulation 2. Training and evaluation of employee safety work 3. Documentation of work accident and its corrective action during company operation 	CSR, EHS and HR Department	Continuously, 2010

VERIFICATION STATEMENT:

The company opted for a desk-top audit against the relevant documents required by the RSPO New Planting Procedure. A pre-audit review was carried out and during the document assessment, two BSI auditors were present with the management team of PT Agro Indomas at Goodhope's office in Jakarta on 23-24th March 2015 to verify and review the relevant documents including interviewing the management team members. Subsequent document review carried out on 8th April 2015. PT Agro Indomas – East Kalimantan completed all relevant requirements on December 2015. The document assessment includes the verification of permits such as: Izin Lokasi, Izin Usaha Perkebunan, SEIA documents (AMDAL, RKL and RPL), HCV assessment report, for the proposed new planting. The initial permit obtained since 2004. Company started planting since the year 2007; and by 2009 has been planted 1,747.85 Ha; another 878.70 Ha planted between 2010 until 2013. BSI auditors confirmed the oil palm expansion plan is for proposed on-going planting and is meant for notification only.

The auditors conclude that the social and environmental assessments and HCV assessment summary are follows the requirements of RSPO New Planting Procedure with details on the assessment result, comprehensive and carried out by qualified professionals with required credibility. The HCV assessment and Social Impact Assessment were conducted by Faculty of Forestry, Institut Pertanian Bogor (IPB) with assessors registered under the HCV Resource Network Assessor Licensing Scheme (verified through HCVRN website) and complied with RSPO New Planting Procedure requirement. The SEIA assessment was conducted by accredited assessors.

As a commitment to an implementation period for promoting best practices in reporting net GHG emission to RSPO, PT Agro Indomas – East Kalimantan has completed the requirement of RSPO GHG Assessment Procedure for new planting by producing separate report to comply with the RSPO P&C 2013 criteria 7.8 which require new planting are designed to minimize greenhouse gas emission. PT Agro Indomas – East Kalimantan has also adhered to the requirements of the RSPO P&C 2013 on analysis of land use change, analysis of high carbon stock. Identification and estimation of potential sources of emission and sinks of carbon associated with the new planting. The assessment was conducted by internal team and under review by RSPO Panel. During the implementation period until 31st December 2016, the reporting on GHG will be to the RSPO Emission Reduction Working Group. PT Agro Indomas – East Kalimantan has submitted the GHG assessment report to RSPO before the NPP notification.

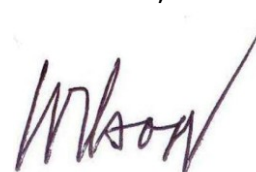
It is the opinion of the BSI auditors that PT Agro Indomas – East Kalimantan has complied with the RSPO New Planting Procedures.

Signed on behalf of
BSI Services Malaysia Sdn Bhd,



Pratama A Sedayu
Lead Auditor

Signed on behalf of
PT Agro Indomas – East
Kalimantan,



Wilton Simanjuntak
RSPO Manager

