



# **RSPO New Planting Procedures**

---

**Summary Report of Planning & Management  
PT. Citra Agro Kencana**

**Report prepared by:  
Anita Masduki and Yudha Budiutama**

## TABLE OF CONTENTS

<b>1. Executive Summary .....</b>	<b>3</b>
<b>2. Reference Document .....</b>	<b>4</b>
SEIA and HCV assessment reports .....	4
List of Legal documents and regulatory permits related to the areas assessed .....	6
Location maps – both at landscape level and property level:.....	8
Area of new plantings and time-plan for new plantings .....	12
<b>3. SEIA and HCV Management and Planning Personnel .....</b>	<b>13</b>
Organizational information and contact Person .....	13
Personnel involved in Planning and Implementation .....	14
Stakeholder to be involved .....	15
<b>4a. Summary of Management and Mitigation Plans (SEIA) .....</b>	<b>15</b>
Mitigation plans to minimise negative for socio-economic impacts .....	15
Management plans to enhance socio-economic contribution .....	15
Mitigation plans for negative for environmental effects .....	15
Management plans to promote positive environmental effects.....	16
<b>4b. Summary of Management and Mitigation Plans (HCV) .....</b>	<b>16</b>
Plan for HCV monitoring and regular review of data .....	16
Management and mitigation plans for threats to HCV areas .....	16
Management plans to enhance or maintain conservation values of identified HCV area .....	17
<b>5. Internal responsibility .....</b>	<b>18</b>
Formal signing off management and mitigation plans .....	18

**RSPO NEW PLANTING PROCEDURES**  
**Summary Report of Planning and Management**  
**PT. Citra Agro Kencana**

**1. Executive Summary**

The proposed new planting company, PT. Citra Agro Kencana (herein after refer to PT. CAK), is the legal entity of its holding company, First Resources Ltd. The holding company got RSPO membership number 1-0047-08-000-00 dated on March 11, 2008. PT. CAK was assessed for compliance against the RSPO Procedures for New Oil Palm Planting (RSPO NPP) using the Guidance Document approved in September 2009 by the RSPO Executive Board.

PT. CAK was established by Act No. . 03 dated on 3 September 2007 issued by Notary Yonsah Minanda, SH and legalized by Ministry of Law and Human Right No. C-03071 HT.01.01.TH.2007 dated on 13 November 2007.

The proposed project has obtained *Ijin Lokasi* (Location Permit) through the Decree of Regent Kutai No. 525.26/K.565b/2010 dated on 14 June 2010 for PT Citra Agro Kencana with total area ± 16.843 Ha located in Lumpat Dahuq Village, Bomboy Village, Muara Begai Village, Damai Seberang Village, and Mantar Village; Damai and Muara Lawa Sub District; Kutai Barat Regency, East Kalimantan Province, Indonesia. The current *Ijin Usaha Perkebunan* (Plantation Permit) was under the Decree of Regent Kutai Barat No. 525.26/K.939b/2010 dated on 22 November 2010 with total area 16,001.07 Ha.

The social and environmental impact assesment (SEIA) was integrated study along with the *Analisis Mengenai Dampak Lingkungan/AMDAL* (Environmental Impact Assessment/EIA). High Conservation Value (HCV) report were available. These documents were prepared by YASBI consultant, an RSPO approved consultant in March 2012

Mandatory document on environmental issues was *Analisis Mengenai Dampak Lingkungan/AMDAL* (Environmental Impact Assessment/EIA) document consist of *Kerangka Acuan* (Scope of Reference for EIA), *Analisis Dampak Lingkungan/ ANDAL* (Environmental Impact Assessment/EIA), and *Rencana Kelola Lingkungan dan Pemantauan Lingkungan/RKL-RPL* (Environmental Management and Monitoring Plan). All these documents approved and issued under the Decree of Head of Environmental Agency of Kutai Barat District No. 660.5/014/KA.ANDAL/BLH-KBR/IX/2010 dated on 29 September 2010 and No. 660.5/015/AMDAL/BLH-KBR/X/2010 dated on 18 October 2010. The documents were prepared by PT. Integral Multi Talenta, a government approved EIA consultant.

The TUV NORD assessor team has checked and verified that all required legal documents as mentioned above were available and legally confirmed. The assessor team conclude that PT. CAK was ready to implement the recommended social and environmental management plan as specified in all documents above to comply with RSPO New Planting Procedure announcement.

## 2. Reference Documents

### 2.1 SEIA and HCV Assessment Report

The scope of the Social and Environmental Impact Assessment (SEIA) and the High Conservation Value (HCV) assessment of PT. CAK cover the local social and environmental aspect within the area under *Ijin Lokasi* (Location Permit), including villages and other surrounding areas.

As part of SEIA, there was the detailed environmental impact assessment which performed in *Analisis Dampak Lingkungan/ ANDAL* (Environmental Impact Assessment/EIA), and *Rencana Kelola Lingkungan dan Pemantauan Lingkungan/RKL-RPL* (Environmental Management and Monitoring Plan) document. It was included assessment of positive and negative on social and environmental impact. The scope of the study included the activities during land development, infrastructure, road access mill operations and transportation. It also assessed the suitability of soils, topography and drainage, and analysis of the land cover vegetation, and its impacts on natural ecosystems and water resources.

Through the SEIA and HCV assessment, it was found that there was no primary forest, no peat area, and no disputes with local people as the land resolution has been confirmed during free prior and informed consent.

#### a. SEIA assessment

As reported in SEIA document, the existence of PT. CAK will have significant social and environmental impacts. It was reported that several issues arise, including communication, land acquisition, labor, economic, education, health, accessibility, and environmental issues. These issues are listed below.

Issues	Description
Communication Issues	<ul style="list-style-type: none"> <li>• Socialization was still less, and dissemination of material has not met the public's curiosity</li> <li>• The local communities and the company have different perception toward land certificate.</li> <li>• There was a lack of understanding about the palm oil plantation and <i>plasma-inti</i> partnerships.</li> <li>• The emerging of negative issues and negative perceptions about palm oil plantations.</li> <li>• Communication between company and stakeholders was not optimal yet.</li> </ul>
Land Acquisition Issues	<ul style="list-style-type: none"> <li>• Part of the local communities were not feel comfortable about the <i>tali asih</i> (compensation given by the company as part of CSR program).</li> <li>• Percentage of the plasma is considered beneficial for some people.</li> <li>• There was no agreement the village boundary (Nyahing and Mantar, and Damai Seberang the Muara Bomboy)</li> <li>• Value of <i>tali asih</i> compensation was too low for the most communities</li> <li>• The communities would rather sell the land in an economic way rather than receive the <i>tali asih</i> compensation.</li> </ul>
Labor	<ul style="list-style-type: none"> <li>• The community asked to recruit local employees.</li> <li>• The workers asked to increase the salary regarding to their economic needs.</li> </ul>
Economic Issues	<ul style="list-style-type: none"> <li>• Many of the creative industries was no more active , such as rattan</li> </ul>

	<p>industry, farming, and fishing, and the potential income from rattan has been decreased</p> <ul style="list-style-type: none"> <li>• Small Industries could not give significant economic contribution</li> <li>• High dependency of food from outside region</li> <li>• The economic potential has not been used optimally (livestock, fisheries, plantation)</li> </ul>
Education issues	<ul style="list-style-type: none"> <li>• Level of education was still low, access to education was still lack.</li> <li>• Lack of education facilities</li> <li>• Lack of the number of teachers</li> <li>• Limited access to get higher education</li> </ul>
Health Issues	<ul style="list-style-type: none"> <li>• Awareness of a healthy lifestyle was still low, health program and facilities also still not optimally running.</li> <li>• Healthy workers were still lack</li> <li>• There was potential for air pollution (dust), it would be cause the spread of diseases such as ARI/ISPA</li> <li>• Potential reduction in water quality of rivers that would be cause the spread of skin disease.</li> </ul>
Accessibility issues	<ul style="list-style-type: none"> <li>• Lack of public transportation since the road and bridge infrastructure was inadequate (Damai Seberang dan Muara Nyahing Village)</li> <li>•</li> </ul>
Environmental Issues	<ul style="list-style-type: none"> <li>• Community fear of loss of quality of river water</li> <li>• Potential decreased in water quality</li> <li>• Potential decreased in water sources quality (Muara Begai)</li> <li>• The potential for air pollution (dust)</li> <li>• Potential climate changes could be happened in the future (warmer air)</li> </ul>

#### b. HCV Assessment

Refer to HCV assessment there were five types of HCVs identified within the plantation permitted area of PT CAK, with the total HCV area is 723.67 ha consist of 389.33 ha are HCV 1, 333.94 ha are HCV 2, 389.33 ha are HCV 4, 389.33 ha are HCV 5 and 0,4 ha are HCV 6. However, some of HCV area are overlapping with other HCV area.

Elements for HCV 1 was consist of

- Riparian river : Nyahing, Kedang Pahu
- Lake : Ketimay, Nyahing 2, Nyahing 3, Nyahing 4, Nyahing 5,
- Spring water : Nyahing, Luntuq Uway, and Bengkirak All of them are overlap with the HCV 4 and HCV 5 area.
- Protected vegetation: Banggeris (*Koompassia malaccensis* Maing), Beremiring/meranti batu (*Shorea uliginosa* Foxw), Durian hutan/ pekawai (*Durio kutejensis* Becc.), Jelmu / lemonu (*Canarium pseudodecumanum*), Meranti merah/ jawar (*Shorea ovalis*), Meranti putih/ lempung (*Shorea lamellata*), Ulin/teluyan (*Eusideroxylon zwageri* T.et B), Nyerakat hitam (*Hopea beccariana* Burck.), Oos (*Ochanostachys amentacea*).
- Protected species of protected wildlife animals identified such as Bekantan (*Nasalis larvatus*), Beruang madu (*Helarctos malayanus*), Beruk (*Macaca nemestrina*), and Buaya sapis (*Tomistoma schlegelii*)

Element for HCV 2 was consists of riparian of Nyahing and Kedang Pahu River.

Elements for HCV 6 are public cemeteries in Muara Nyahing.

Based on information from SEIA and HCV assessment along with its stakeholder meeting, PT. CAK prepared a management plan deal with social and environmental aspects and impacts. And based on review and verification on all of above documents, TUV NORD assessor team confirmed that

the assessment and management plan are comprehensive and compliant to the RSPO New Planting Procedure.

## 2.2 List of legal documents and regulatory permits

PT CAK has prepared all required legal documents and regulatory permits related to the areas assessed as listed below.

a. List of legal documents

- SEIA Assessment report for PT. CAK
- HCV Assessment report for PT. CAK
- *Analisis Mengenai Dampak Lingkungan/AMDAL* (Environmental Impact Assessment/EIA) document consist of *Kerangka Acuan ANDAL* (Scope of Reference for EIA), *Analisis Dampak Lingkungan/ ANDAL* (Environmental Impact Assessment/EIA), and *Rencana Kelola Lingkungan dan Pemantauan Lingkungan/RKL-RPL* (Environmental Management and Monitoring Plan)
- Land release and compensation records.
- Minutes of Meetings with Communities on Public awareness of the Project (FPIC- Free Prior and Informed Consent)
- The oil palm development plan of PT. CAK

b. List of regulatory permit

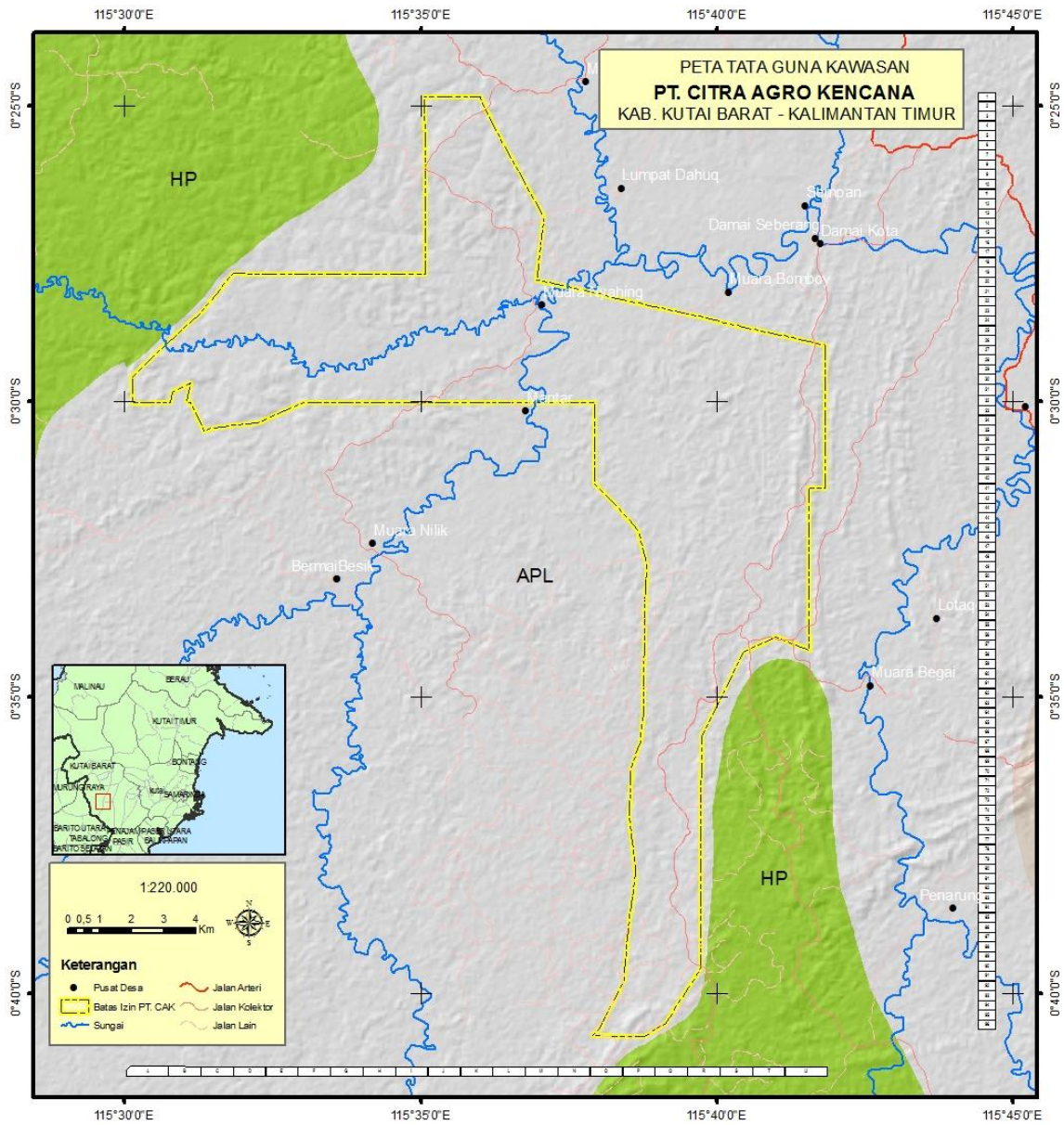
No	Type of Licenses	Issued by	Number and Date
1	Act of Establishment	Notary Jhonni Marihotua Slanturi, SH	No. 03 dated on 3 September 2007
2	Legalization Act of Establishment	Ministry of Law and Human Right of Republic Indonesia	No. C-03071 HT.01.01.TH.2007 dated on 13 November 2007 .
3	Location Permit	Regent of Kutai Barat	No.525.26/K.565a/2010 dated on 14 Juny 2010.
4	Plantation Permit	Regent of Kutai Barat	No.525.26/K.565b/2010 dated on 14 Juni 2010.
5	<i>Kerangka Acuan</i> (Scope of Reference for EIA) ANDAL	Head of Environmental Agency Kutai Barat Regency	No.660.5/014/KA.ANDAL/BLH-KBR/IX/2010 dated on 29 September 2010.
6	<i>Analisis Dampak Lingkungan/ ANDAL</i> (Environmental Impact Assessment/EIA), and <i>Rencana Kelola Lingkungan dan Pemantauan Lingkungan/RKL-RPL</i> (Environmental Management and Monitoring Plan)	Regent of Kutai Barat	No. 660.5/015/AMDAL/BLH-KBR/X/2010 dated on 18 Oktober 2010.

### 2.3 Location map – both at landscape level and property level.

a. Maps of PT. CAK Location in East Kalimantan



b. Map of Land Use Area of PT. CAK in Kutai Barat Regency

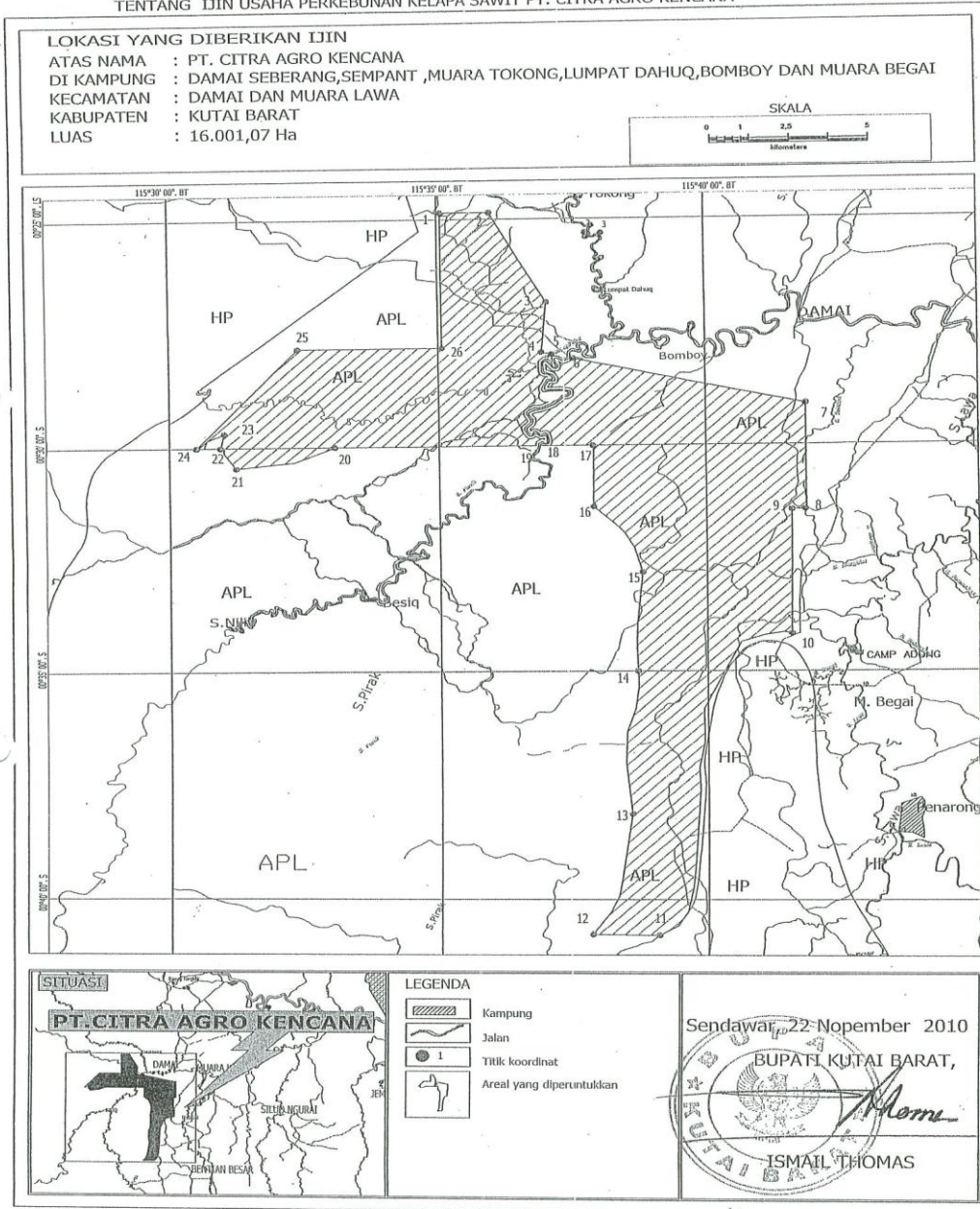




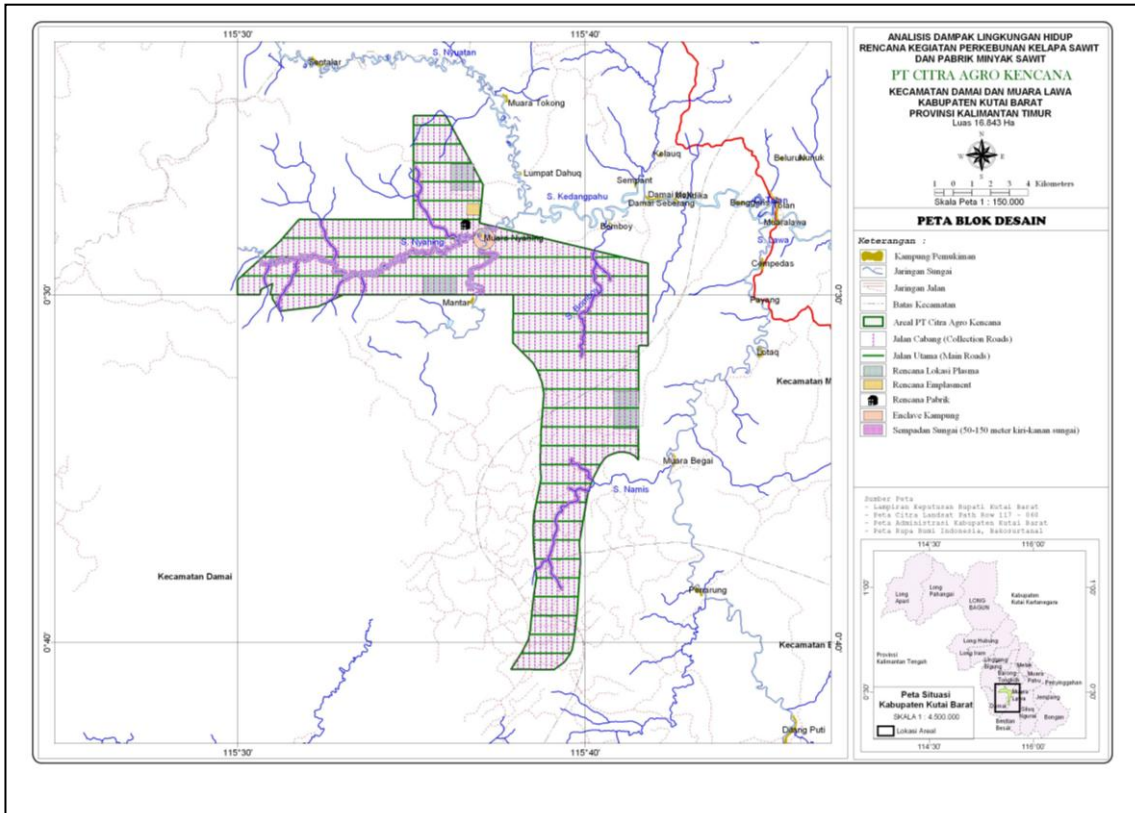
c. Maps of Plantation Permit No. 525.26/K.939b/2010 dated on 22 November 2010

Lampiran II : Lokasi

KEPUTUSAN BUPATI KUTAI BARAT NOMOR : 525.26/K. 939 b /2010  
TENTANG IJIN USAHA PERKEBUNAN KELAPA SAWIT PT. CITRA AGRO KENCANA



d. Maps Block Design of PT. CAK



## 2.4 Area of New Plantings and Time-plan for New Plantings.

The proposed new planting area of PT CAK was accordance with current *Ijin Usaha Perkebunan* (Plantation Permit) No. 525.26/K.939b/2010 dated on 22 November 2010 which cover around 16,001.07 ha. Among this area, estimated new planting area approximately 13,500.00 ha, consisted of 10,800 ha for *kebun inti* (nucleus estate) and 2,700 ha (around 20%) for *kebun plasma* (smallholders scheme) which will be dedicated for farmers or growers under estate management. The aim of smallholder scheme is to contribute income and maintain harmonious relationship with the local community.

The partnership program was developed in document *Naskah Kerjasama Pembangunan Perkebunan Kelapa Sawit Program Kemitraan* (Memorandum of Understanding on Palm Oil Development Partnership Program) dated on 29 October 2010. The proposed time-plan for new planting will commence in August 2012 and prior to the new planting date, PT CAK shall put notification in RSPO website to allow related parties have their comments to the plan. PT CAK has the time-plan for new planting area in detailed as listed below.

No	Activity	Planting Area (Ha)				
		2012	2013	2014	2015	TOTAL
1	Land Clearing					
	<i>Kebun Inti</i> (Nucleus Estates)	2,400.00	2,800.00	2,800.00	2,800.00	10,800.00
	<i>Kebun Plasma</i> (Smallholders)	600.00	700.00	700.00	700.00	2,700.00
	Total Land Clearing	3,000.00	3,500.00	3,500.00	3,500.00	13,500.00
2	Nursery	600,000.00	700,000.00	700,000.00	700,000.00	2,700,000.00
	Planting					
3	<i>Kebun Inti</i> (Nucleus Estates)	2,400.00	2,800.00	2,800.00	2,800.00	10,800.00
	<i>Kebun Plasma</i> (Smallholders)	600.00	700.00	700.00	700.00	2,700.00
	<b>Total Planting</b>	<b>3,000.00</b>	<b>3,500.00</b>	<b>3,500.00</b>	<b>3,500.00</b>	<b>13,500.00</b>

Due to land release process, PT. CAK has established procedure *Prosedur Pembayaran Tali Asih Pembebasan Lahan* (Land Acquisition and Calculation) dated on 18 January 2010. The total compensated land area as per March 2012 are 4,285.64 ha in Lumpat Dahuq, Mantar Village, and in Muara Begai Village while in other villages are still in progress of verification and measurement by independence team from community groups.

The TUV NORD assessor team has checked and verified related documents on land acquisition and its calculation and concluded that PT. CAK has performed the land acquisition resolution through free prior and informed consent as reported in SEIA report and Minutes of Meetings with Communities on Public awareness of the Project.

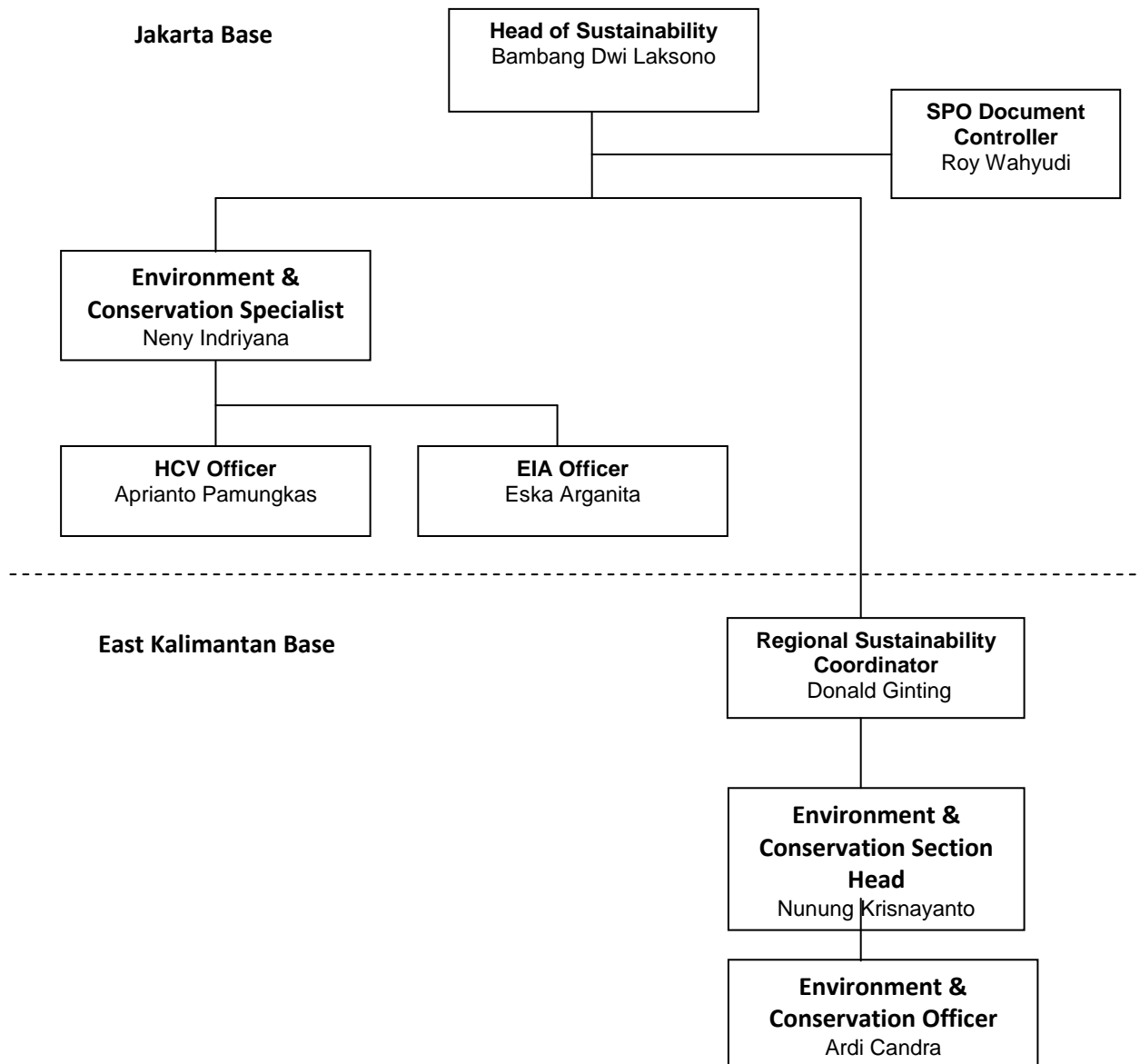
### 3. SEIA and HCV Management & Planning Personnel

#### 3.1. Organisational information and contact persons

Company Name	PT. Citra Agro Kencana, a subsidiary of First Resources Ltd.
Capital Status	Domestic Investment Company (PMDN)
Act of Establishment	No. 03 dated on 3 September 2007 issued by Notary Yonsah Minanda, SH, legalized by Ministry of Law and Human Right of Republic Indonesia No. C-03071 HT.01.01.TH.2007 dated on 13 November 2007
Tax Notification Number	02.693.244.2-211.000
Company Address	APL Tower –Central Park, 28th Floor Podomoro City, Jl. Letjen. S.Parman Kav.28, Grogol-Petamburan, Jakarta Barat, Indonesia (Corporate Office) Jln.Jend.Sudirman Blok A 12 RT.007 Kel.Kelانداسان Ilir-Balikpapan 73113 (Regional Office)
Type of Business	Oil Palm Plantation and Processing
Status of business land	Location Permit by Decree of Regent Kutai Barat No. 525.26/K.565b/2010 dated on 14 June 2010, total area 16.843 ha  Plantation Permit by Decree of Regent Kutai Barat No. 525.26/K.939b/2010 dated on 22 November 2010, total area 16,001.07 ha
Contact Person	Director – Azaria Yoga Prasetyanto Corporate Sustainability Head – Bambang Dwi Laksono Email Address: <a href="mailto:bambang.dwilaksono@first-resources.com">bambang.dwilaksono@first-resources.com</a>
GPS	E : 115°32'22" – 115°41'49" S : 00°24'51" – 00°40'47"
Region Boundaries	
North side	PT. Borneo Persada Energy Jaya
South side	PT. Ketapang Hijau Lestari (KHL)
West side	PT. Kruing Lestari Jaya – KBK
East side	PT.Trubaindo Coal Mining (TCM) – KBK

### 3.2 Personnel involved in planning and implementation.

Findings from HCV and SEIA assessment and recommendation are integrated within the operational management plan of the Group. The implementation of management and monitoring of the HCV and SEIA mitigation plans will be managed under the direction of Head of Sustainability in Jakarta Base which is supported by Contoiller SPO Document and Specialist Environment and Conservation, Officer HCV and Officer EIA. .In East Kalimantan Base by Coordinator Regional Sustainability, supported by Head Environment & Conservation Section and Officer Environment & Conservation. The organization chart is shown below.



### **3.3 Stakeholders to be involved.**

Stakeholders to be involved in SEIA and HCV management plan consist of local communities surrounding PT CAK and relevant government institutions, detailed as below.

- a. Local communities are the people located inside and around the licensed area of PT. Citra Agro Kencana:
  - Lumpat Dahuq
  - Bomboy
  - Muara Begai
  - Damai seberang
  - Mantar
- b. The Head of relevant villages
- c. Local Government Agencies, District Government Agencies

### **4a. Summary of Management and Mitigation Plans (SEIA)**

PT CAK has prepared the SEIA report Assessment for PT. CAK was conducted by a government accredited EIA consultant PT. Integral Multi Talenta, which also prepare management and mitigation plans. The AMDAL document was approved on 18 October 2010 by Decree of the Regent Kutai Barat No. 660.5/015/AMDAL/BLH-KBR/X/2010

The Top management of PT. CAK are committed to accomplish the environmental management plans and has issued decrees and policy such as:

- SK CEO tentang penetapan kawasan HCV (Decree of HCV area establishment PT. CAK) No.010/SUSTAINABILITY\_FR/P/V/2012 dated 1 May 2012
- SK CEO tentang pembukaan lahan yang berwawasan lingkungan dan konservasi (Decree of land clearing in environmental and conservation conduct) NO : 009/SUSTAINABILITY\_FR/P/II/2012 dated 1 February 2012
- SK Kebijakan Lingkungan dan K3 (Decree of Environmental, Health and Safety Policy) 001/SUSTAINABILITY\_FR/P/IX/2011 dated 20 September 2012
- SOP Identification, Management, and Monitoring of High Conservation Value No. 01/FR.EAC/IMM dated 13 April 2012

#### **4a.1 Mitigation plans to minimise negative for socio-economic impacts.**

PT. CAK has developed mitigation plans to minimize negative for socio-economic impacts. The potential negative impacts include: the behavior of an increasingly consumerist society, the increasing land conflicts between people due to the increasing value of land, changing patterns of community livelihoods, and social disparities between indigenous communities and the migrants. The mitigation plans are :

- Survey with the related parties in on definitive delineation of land ownership
- Development of alternative income generating activities to safeguard their economic standing after post-development of the project.

#### **4a.2 Management plans to enhance socio-economic contributions.**

PT. CAK has developed management plans to enhance socio-economic contributions. The steps taken in the SEIA development and preparation of management & monitoring plans are:

- Improvement on the level of community education
- Increase local communities awareness of good agricultural practice, cattle, and fishing.
- Employment and the creation of new jobs
- Create a community development program through a communication forum
- Built communication and net with stakeholder regarding PT. CAK

#### **4a.3 Mitigation plans for negative environmental effects**

The environmental issues in the study area is potentially the reduction of river water quality, also decreasing of air quality and increasing noise level if the mill starts to operate. PT. CAK has developed mitigation plans for potentially negative environmental impacts, such as to conduct water and air quality as well noise measurement regularly as required by government regulation

#### **41.4 Management plans to promote positive environmental effects**

The presence of PT. CAK is expected by local community to have positive environmental effects to provide clean water and protect the water resources that have been delineated in HCV area. Moreover improvement quality of community health and development environment conservation program and descend level of air pollution

### **4b. Summary of Management and Mitigation Plans (HCV)**

#### **Plan for HCV monitoring and regular review of data.**

The HCV monitoring and review plan is aimed to evaluate whether the activities implementation are as expected and whether the outputs of the process are as per targets; and whether the resources investments (human, fund, time) are as per plan.

#### **4b.1 Management and mitigation plans for threats to HCV areas**

#### **4b.2 Management and mitigation plans for HCV 1 and HCV 2**

- Issue CEO decree for HCV establishment area and SOP to manage and to monitor HCV area.
- Conduct awareness campaign to all plantation and surrounding community, about the existence of the entire HCV
- Create a definitive map of HCV
- Conduct delineation of the entire area of HCV as identified and put up signboard identifying HCV area, together with photos of protected species and with clear warning of consequences of illegal hunting
- Conduct delineation of the entire area of HCV as referred and put up riparian signboard of buffer zone surrounding the area of the identified HCV (50 m for river with length < 30 m, 100 m for river with length > 30 m, and radius 200 m around springwater) with clear warning of consequences of illegal hunting, illegal fishing (poisoning, using electricity and explosive), prohibition to use agro-chemicals along buffer zone
- Do not build roads, canals and other infrastructures in HCV area
- Do not build plantation in HCV area
- Conduct regular monitoring to the presence of identified protected species
- Conduct enrichment planting/ rehabilitation for HCV area which have low vegetation coverage.

#### **4b.3 Management and Mitigation plan for HCV 4**

- Define the water catchment area as water resources for local community.
- Conduct delineation of the entire area of HCV as referred and put up riparian signboard of buffer zone surrounding the area of the identified HCV (50 m for river with length < 30 m, 100 m for river with length > 30 m, and radius 200 m around springwater) with clear warning of consequences of illegal hunting, illegal fishing (poisoning, using electricity and explosive), prohibition to use agro-chemicals along buffer zone.
- Implement policies and/or SOP to regulate the use of agro-chemical and waste management and conduct publication and awareness campaign on the SOP.
- Do not build roads, canals and other infrastructures in HCV area.
- Testing and analyze the water quality regularly.
- Implement Zero burning policy during land clearing activity
- Identify areas that are prone to fires and preserve fire barrier area
- Establish procedure of emergency responses and preparedness to land burning and provide fire extinguishers and facilities.

**4b.4 Management and Mitigation plan for HCV 5**

- Communicate with local community to utilize forest product in sustainable manner.
- Put up signboard identifying the types of HCV area, with clear warning of consequences of illegal hunting, illegal logging and excessive harvesting of forest products.

**4b.5 Management and Mitigation plan for HCV 6**

- Conduct delineation of the entire area of HCV as identified and put up signboard identifying HCV area and protect the area together with local community.
- Provide free access to local community towards the area of Public Cemetery.

**4b.6 Management plans to enhance or maintain conservation values of identified HCV areas**

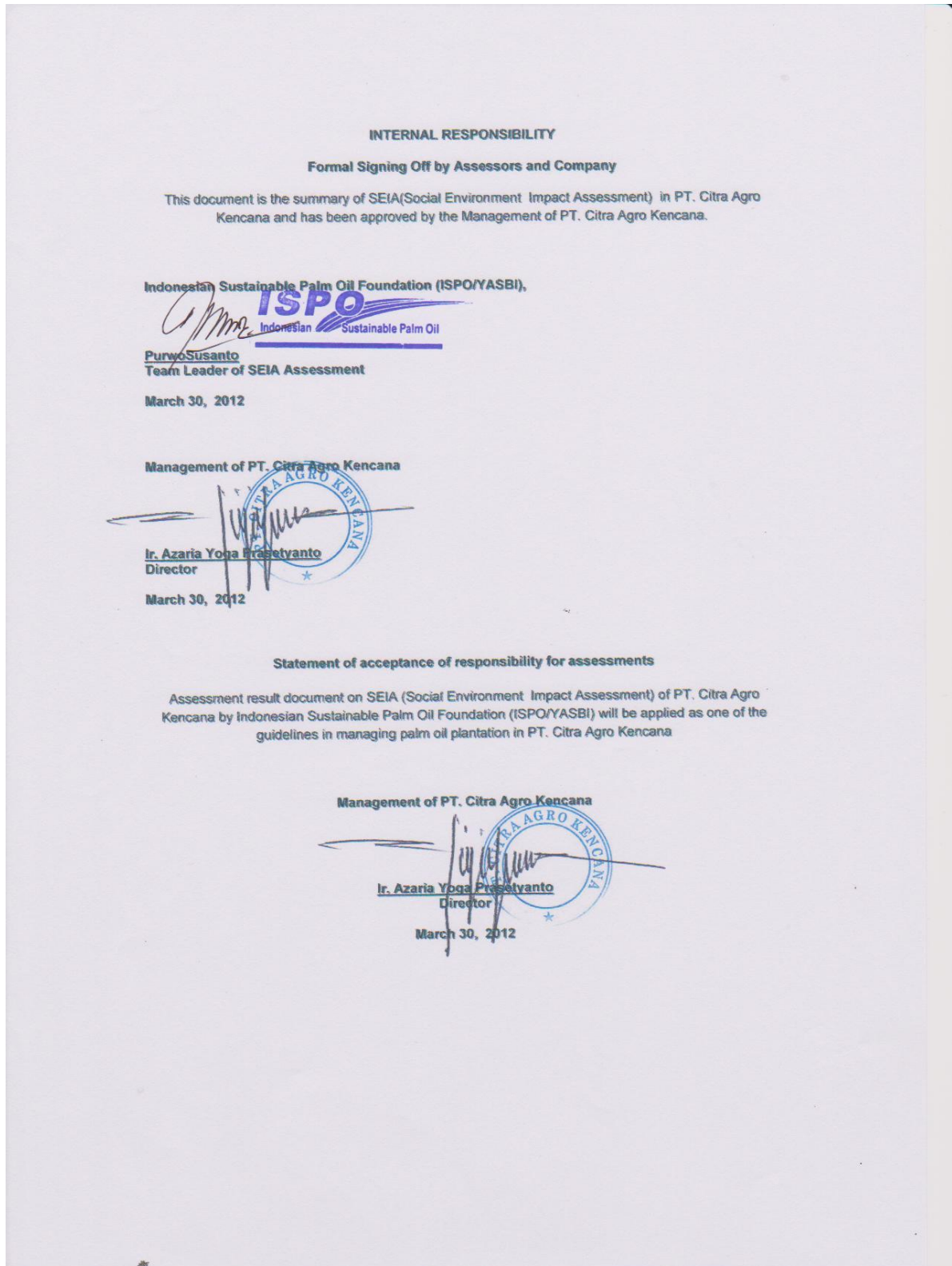
The process of Strategic Mapping, the Practical Vision was adopted in defining the Basic Targets. Those Basic Targets included six items to be achieved through the efforts of HCV management as follow:

1. The existing areas with key animals in the proposed area are conserved,
2. The sustainability of the local habitats is reserved,
3. The river banks function as the hydrological buffer (the protection for water cycle), ecology (the protection for wildlife species) is maintained,
4. The erosion risk and fire risk is managed and controlled,
5. Conserve water catchments areas
6. Preserve the local graveyards and cultural sites.



5. Internal responsibility

Formal signing off of management and mitigation plans.



**INTERNAL RESPONSIBILITY**

**Formal Signing Off by Assessors and Company**

This document is the summary of HCV (High Conservation Value) Assessment in PT. Citra Agro Kencana and has been approved by the Management of PT. Citra Agro Kencana.

Indonesian Sustainable Palm Oil Foundation (ISPO/YASBI),



**Purwo Susanto**  
Team Leader of HCV Assessment

March 30, 2012

Management of PT. Citra Agro Kencana


  
**Ir. Azaria Yoga Prasetyanto**  
Director

March 30, 2012

**Statement of acceptance of responsibility for assessments**

Assessment result document on High Conservation Value (HCV) Assessment of PT. Citra Agro Kencana by Indonesian Sustainable Palm Oil Foundation (ISPO/YASBI) will be applied as one of the guidelines in managing palm oil plantation in PT. Citra Agro Kencana

Management of PT. Citra Agro Kencana

  
**Ir. Azaria Yoga Prasetyanto**  
Director

March 30, 2012

## **ATTACHMENT**

### **Assessor of AMDAL**

The AMDAL document of PT. Citra Agro Kencana, was prepared by independent consultant PT. Integral Multi Talenta and approved by local government. The team members are :

Team Leader : Ir. Sulaeman, MP,

1. Team member : Fachrudin Azwari, ST, M.Si.
2. Team member : Desiana, Sp, M.Si.
3. Team member : Agus Nurhadi Irawan, S.Hut.
4. Team member : Ir. Andi Yusuf, M.P
5. Team member : Hariyani, S.sos.
6. Team member : dr. Rivia gina Rahmawaty

### **Assessor of HCV**

The HCV assessment was carried out by an independent consultant from YASBI in March 2012. The team members consist of consultant accredited and approved by the RSPO includes:

1. Ir. Purwo Susanto/ Ketua Tim
2. Iksal Yanuarsyah, S.Hut, M.Sc ( field coordinator)
3. Bukti Bagja S.Hut. MSi (HCV Analyst)
4. Dr. Wawan Gunawan, S.Hut., M.Si
5. R. Sukasmianto, SP ( environmental Aessor )
6. Dr. Iswan Dunggio, SP, M.Si

### **Assessor of SEIA**

The SEIA assessment was carried out by an independent consultant from YASBI in March 2012.

Team Leader : Ir. Purwo Susanto

Team member :

1. Ir. Hery Prasetyo. (Field Coordinator)
2. Kun Indriastuti Widowati, S.Sos., MSi (Social aspect)
3. Moh. Yasin, S.Fil.I (Environmental aspect)
4. Arief Wahyu Candra Susilo, S.Sos. (Economic aspect)
5. M. Alzim Suaidi Nas, S THi (Demographic aspect )