

13 Februari 2023

Notifikasi Publik :

RSPO [Audit Sertifikasi Awal (MS B)] dari Koperasi Unit Desa Bangkit Usaha Makmur (RSPO Membership : 1-0427-22-000-00)

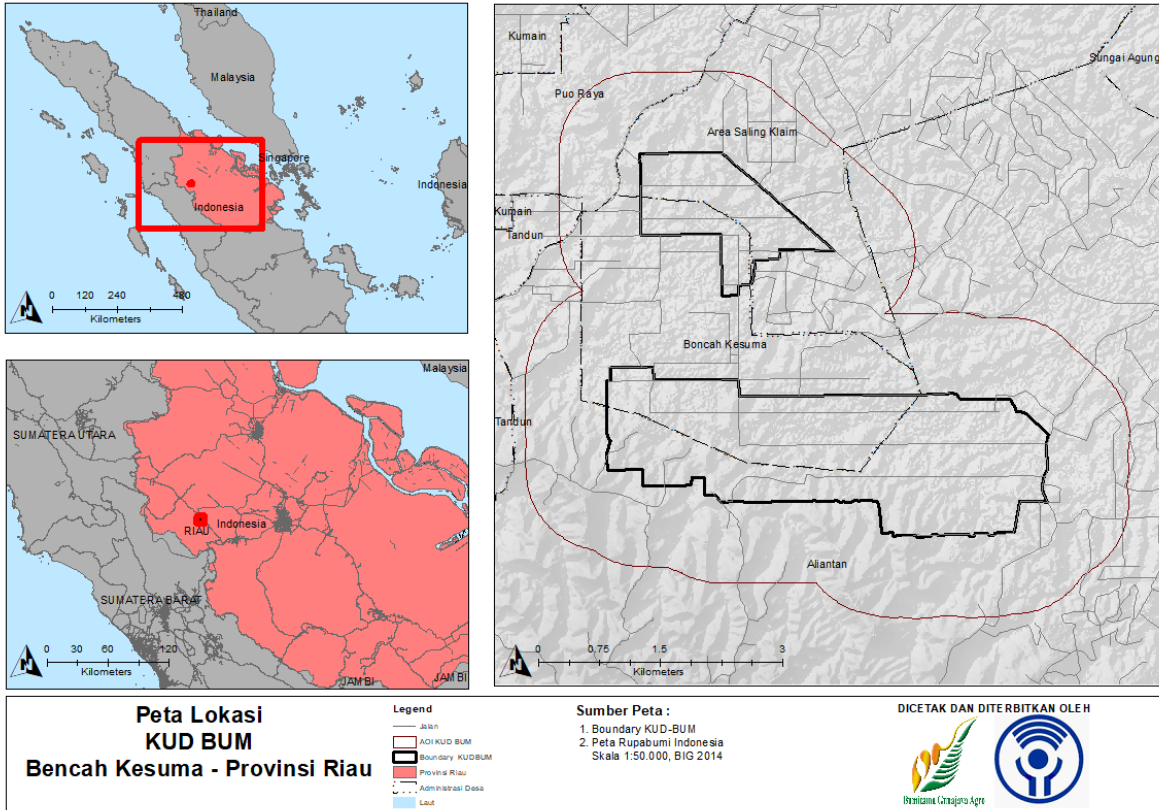
Kepada Para Pihak Yang Berkepentingan,

Pengumuman ini bertujuan untuk menginformasikan bahwa KUD Bangkit Usaha Makmur (KUD BUM) Dengan nomor RSPO Membership **1-0427-22-000-00** telah menunjukan LS PT TUV Rheinland Indonesia untuk melakukan Audit Sertifikasi Awal (MS B) yang berlokasi di Desa Boncah Kesuma, Kecamatan Kabun, Kabupaten Rokan Hulu, Provinsi Riau, Indonesia. Audit akan dilaksanakan dari tanggal 29 Mei – 3 Juni 2023 menggunakan standard RSPO Independent Smallholder 2019.

Nomor RSPO Palmtrace ID dari KUD Bangkit Usaha Makmur adalah RSPO_PO1000015243.

Nama Ketua Kelompok	Alamat Ketua Kelompok	Lokasi Kelompok Petani Swadaya		Referensi GPS	
				Garis Lintang	Garis Bujur
Khoirum	Desa Boncah Kesuma, RT/RW 006/002, Kecamatan Kabun, Kabupaten Rokan Hulu, Provinsi Riau, Indonesia	Desa Boncah Kesuma, Kecamatan Kabun, Kabupaten Rokan Hulu, Provinsi Riau, Indonesia	Utara	0°32'22.151"N	100°41'59.757"E
			Selatan	0°29'48.611"N	100°43'16.042"E
			Timur	0°30'28.442"N	100°44'10.692"E
			Barat	0°30'19.535"N	100°41'14.035"E

Peta Lokasi dari Group Petani Swadaya (Mohon untuk menyertakan Peta Lokasi dari Group Petani Swadaya)



Detail dari latar belakang petani swadaya, termasuk sebagai berikut

Daftar anggota kelompok

No.	Name of Farmer	Lokasi	GPS Coordinate		Total size (ha)	Total Area Planted (ha)	Total Production (mt)	Liabilities	Date of Joint
			Langitude	Lotitude					
1	Muhamad samin	Ds. Boncah Kesuma, Kec. Kabun, Kab. Rokan Hulu, Riau	100° 41' 34.89" E	0° 32' 29.9" U	1.63	1.63	5.38	No	02 January 2022
2	Suko	Ds. Boncah Kesuma, Kec. Kabun, Kab. Rokan Hulu, Riau	100° 41' 29.06" E	0° 32' 18.77" U	1.95	1.95	40.34	No	02 January 2022
3	Mujer	Ds. Boncah Kesuma, Kec. Kabun, Kab. Rokan Hulu, Riau	100° 41' 32.26" E	0° 32' 18.72" U	1.91	1.91	28.78	No	02 January 2022
4	Rukiyah	Ds. Boncah Kesuma, Kec. Kabun, Kab. Rokan Hulu, Riau	100° 41' 35.47" E	0° 32' 18.76" U	1.94	1.94	14.23	No	02 January 2022
5	Nunung Sumiati	Ds. Boncah Kesuma, Kec. Kabun, Kab. Rokan Hulu, Riau	100° 41' 38.71" E	0° 32' 18.8" U	1.96	1.96	19.32	No	02 January 2022
6	Sugiyo	Ds. Boncah Kesuma, Kec. Kabun, Kab. Rokan Hulu, Riau	100° 41' 41.94" E	0° 32' 18.84" U	1.97	1.97	20.58	No	02 January 2022
7	Cahono	Ds. Boncah Kesuma, Kec. Kabun, Kab. Rokan Hulu, Riau	100° 41' 45.16" E	0° 32' 18.87" U	1.97	1.97	31.48	No	02 January 2022
8	Nariadi	Ds. Boncah Kesuma, Kec. Kabun, Kab. Rokan Hulu, Riau	100° 41' 48.42" E	0° 32' 18.88" U	2.02	2.02	22.54	No	02 January 2022
9	Mohammad yusuf	Ds. Boncah Kesuma, Kec. Kabun, Kab. Rokan Hulu, Riau	100° 41' 51.66" E	0° 32' 18.88" U	1.97	1.97	23.78	No	02 January 2022
10	Sumardi	Ds. Boncah Kesuma, Kec. Kabun, Kab. Rokan Hulu, Riau	100° 41' 54.9" E	0° 32' 18.88" U	2.03	2.03	35.59	No	02 January 2022
11	Hermanto	Ds. Boncah Kesuma, Kec. Kabun, Kab. Rokan Hulu, Riau	100° 41' 58.17" E	0° 32' 18.9" U	2.02	2.02	20.57	No	02 January 2022
12	Puji Harto	Ds. Boncah Kesuma, Kec. Kabun, Kab. Rokan Hulu, Riau	100° 42' 2.22" E	0° 32' 17.85" U	3.32	3.32	22.02	No	02 January 2022
13	Tamri	Ds. Boncah Kesuma, Kec. Kabun, Kab. Rokan Hulu, Riau	100° 42' 7.78" E	0° 32' 12.26" U	1.81	1.81	32.33	No	02 January 2022
14	Suwanti	Ds. Boncah Kesuma, Kec. Kabun, Kab. Rokan Hulu, Riau	100° 42' 4.58" E	0° 32' 12.44" U	2.12	2.12	34.62	No	02 January 2022
15	Sugiyo	Ds. Boncah Kesuma, Kec. Kabun, Kab. Rokan Hulu, Riau	100° 42' 2.13" E	0° 32' 12.42" U	1.00	1.00	14.91	No	02 January 2022
16	H. Sukirno	Ds. Boncah Kesuma, Kec. Kabun, Kab. Rokan Hulu, Riau	100° 42' 0.59" E	0° 32' 12.36" U	0.91	0.91	11.70	No	02 January 2022
17	Kaswito	Ds. Boncah Kesuma, Kec. Kabun, Kab. Rokan Hulu, Riau	100° 41' 58.16" E	0° 32' 12.39" U	2.01	2.01	34.04	No	02 January 2022
18	Karyani	Ds. Boncah Kesuma, Kec. Kabun, Kab. Rokan Hulu, Riau	100° 41' 54.89" E	0° 32' 12.41" U	2.00	2.00	33.97	No	02 January 2022
19	Soleh	Ds. Boncah Kesuma, Kec. Kabun, Kab. Rokan Hulu, Riau	100° 41' 51.66" E	0° 32' 12.4" U	1.97	1.97	15.76	No	02 January 2022
20	Atikah	Ds. Boncah Kesuma, Kec. Kabun, Kab. Rokan Hulu, Riau	100° 41' 48.41" E	0° 32' 12.4" U	2.02	2.02	31.22	No	02 January 2022
21	Fatori	Ds. Boncah Kesuma, Kec. Kabun, Kab. Rokan Hulu, Riau	100° 41' 45.17" E	0° 32' 12.39" U	2.00	2.00	10.86	No	02 January 2022
22	Suliman	Ds. Boncah Kesuma, Kec. Kabun, Kab. Rokan Hulu, Riau	100° 41' 41.94" E	0° 32' 12.39" U	1.99	1.99	25.39	No	02 January 2022
23	Badrun salimi	Ds. Boncah Kesuma, Kec. Kabun, Kab. Rokan Hulu, Riau	100° 41' 38.7" E	0° 32' 12.39" U	1.98	1.98	28.45	No	02 January 2022
24	Tukinah	Ds. Boncah Kesuma, Kec. Kabun, Kab. Rokan Hulu, Riau	100° 41' 35.47" E	0° 32' 12.34" U	2.00	2.00	36.46	No	02 January 2022
25	Marsito	Ds. Boncah Kesuma, Kec. Kabun, Kab. Rokan Hulu, Riau	100° 41' 32.23" E	0° 32' 12.29" U	2.02	2.02	25.28	No	02 January 2022
26	Harun	Ds. Boncah Kesuma, Kec. Kabun, Kab. Rokan Hulu, Riau	100° 41' 29.08" E	0° 32' 12.27" U	1.91	1.91	20.45	No	02 January 2022
27	Taufiq pujianto	Ds. Boncah Kesuma, Kec. Kabun, Kab. Rokan Hulu, Riau	100° 41' 29.1" E	0° 32' 5.72" U	1.88	1.88	21.80	No	02 January 2022

28	Basoni	Ds. Boncah Kesuma, Kec. Kabun, Kab. Rokan Hulu, Riau	100° 41' 32.23" E	0° 32' 5.74" U	2.02	2.02	24.15	No	02 January 2022
29	Muhammad Erpan Ayub	Ds. Boncah Kesuma, Kec. Kabun, Kab. Rokan Hulu, Riau	100° 41' 35.47" E	0° 32' 5.8" U	2.02	2.02	27.96	No	02 January 2022
30	Muhaimin	Ds. Boncah Kesuma, Kec. Kabun, Kab. Rokan Hulu, Riau	100° 41' 38.71" E	0° 32' 5.83" U	2.05	2.05	18.47	No	02 January 2022
31	Sutrisno	Ds. Boncah Kesuma, Kec. Kabun, Kab. Rokan Hulu, Riau	100° 41' 42.76" E	0° 32' 5.81" U	0.99	0.99	2.33	No	02 January 2022
32	Miduk Siregar	Ds. Boncah Kesuma, Kec. Kabun, Kab. Rokan Hulu, Riau	100° 41' 45.17" E	0° 32' 5.84" U	2.02	2.02	27.84	No	02 January 2022
33	Mahyun	Ds. Boncah Kesuma, Kec. Kabun, Kab. Rokan Hulu, Riau	100° 41' 48.41" E	0° 32' 5.88" U	2.03	2.03	28.11	No	02 January 2022
34	Wahyono	Ds. Boncah Kesuma, Kec. Kabun, Kab. Rokan Hulu, Riau	100° 41' 51.65" E	0° 32' 5.91" U	1.99	1.99	29.42	No	02 January 2022
35	Aminudin	Ds. Boncah Kesuma, Kec. Kabun, Kab. Rokan Hulu, Riau	100° 41' 54.89" E	0° 32' 5.94" U	2.02	2.02	29.59	No	02 January 2022
36	Nur Khoyin	Ds. Boncah Kesuma, Kec. Kabun, Kab. Rokan Hulu, Riau	100° 41' 58.14" E	0° 32' 5.91" U	1.99	1.99	15.29	No	02 January 2022
37	H Moh Siswanto A	Ds. Boncah Kesuma, Kec. Kabun, Kab. Rokan Hulu, Riau	100° 42' 1.33" E	0° 32' 5.91" U	1.91	1.91	3.71	No	02 January 2022
38	Saliman	Ds. Boncah Kesuma, Kec. Kabun, Kab. Rokan Hulu, Riau	100° 42' 4.59" E	0° 32' 5.95" U	2.11	2.11	23.55	No	02 January 2022
39	Ismail	Ds. Boncah Kesuma, Kec. Kabun, Kab. Rokan Hulu, Riau	100° 42' 7.86" E	0° 32' 5.93" U	1.94	1.94	22.10	No	02 January 2022
40	Sutikno	Ds. Boncah Kesuma, Kec. Kabun, Kab. Rokan Hulu, Riau	100° 42' 14.82" E	0° 32' 7.52" U	1.62	1.62	38.33	No	02 January 2022
41	Sukarso	Ds. Boncah Kesuma, Kec. Kabun, Kab. Rokan Hulu, Riau	100° 42' 11.06" E	0° 32' 5.9" U	1.99	1.99	29.01	No	02 January 2022
42	Suratno	Ds. Boncah Kesuma, Kec. Kabun, Kab. Rokan Hulu, Riau	100° 42' 16.75" E	0° 32' 4.1" U	2.32	2.32	4.12	No	02 January 2022
43	Sukirno	Ds. Boncah Kesuma, Kec. Kabun, Kab. Rokan Hulu, Riau	100° 42' 24.95" E	0° 31' 58.38" U	2.08	2.08	26.97	No	02 January 2022
44	Novi Andriani	Ds. Boncah Kesuma, Kec. Kabun, Kab. Rokan Hulu, Riau	100° 42' 20.85" E	0° 31' 59.52" U	2.15	2.15	0.25	No	02 January 2022
45	Kuswadi	Ds. Boncah Kesuma, Kec. Kabun, Kab. Rokan Hulu, Riau	100° 42' 17.5" E	0° 31' 59.48" U	1.94	1.94	18.36	No	02 January 2022
46	Moch.Kiyato	Ds. Boncah Kesuma, Kec. Kabun, Kab. Rokan Hulu, Riau	100° 42' 11.05" E	0° 31' 59.48" U	1.97	1.97	25.34	No	02 January 2022
47	Warsito	Ds. Boncah Kesuma, Kec. Kabun, Kab. Rokan Hulu, Riau	100° 42' 1.33" E	0° 31' 59.44" U	1.94	1.94	9.52	No	02 January 2022
48	Polman manik	Ds. Boncah Kesuma, Kec. Kabun, Kab. Rokan Hulu, Riau	100° 41' 58.13" E	0° 31' 59.43" U	2.01	2.01	15.28	No	02 January 2022
49	Utami Riharti	Ds. Boncah Kesuma, Kec. Kabun, Kab. Rokan Hulu, Riau	100° 41' 51.65" E	0° 31' 59.39" U	1.99	1.99	13.33	No	02 January 2022
50	Sumedi	Ds. Boncah Kesuma, Kec. Kabun, Kab. Rokan Hulu, Riau	100° 41' 48.42" E	0° 31' 59.37" U	2.00	2.00	17.54	No	02 January 2022
51	Istiqomilah	Ds. Boncah Kesuma, Kec. Kabun, Kab. Rokan Hulu, Riau	100° 41' 45.17" E	0° 31' 59.33" U	1.98	1.98	21.48	No	02 January 2022
52	Adminah	Ds. Boncah Kesuma, Kec. Kabun, Kab. Rokan Hulu, Riau	100° 41' 41.94" E	0° 31' 59.29" U	1.97	1.97	19.92	No	02 January 2022
53	Towaf	Ds. Boncah Kesuma, Kec. Kabun, Kab. Rokan Hulu, Riau	100° 41' 38.7" E	0° 31' 59.28" U	1.98	1.98	5.95	No	02 January 2022
54	Ranto Pawiro	Ds. Boncah Kesuma, Kec. Kabun, Kab. Rokan Hulu, Riau	100° 41' 32.23" E	0° 31' 59.25" U	1.99	1.99	19.97	No	02 January 2022
55	Syofyan asmi	Ds. Boncah Kesuma, Kec. Kabun, Kab. Rokan Hulu, Riau	100° 41' 29.12" E	0° 31' 59.23" U	1.81	1.81	22.89	No	02 January 2022
56	Sutarno	Ds. Boncah Kesuma, Kec. Kabun, Kab. Rokan Hulu, Riau	100° 41' 29.14" E	0° 31' 52.66" U	1.86	1.86	27.28	No	02 January 2022
57	Edi Mukti Suryadi	Ds. Boncah Kesuma, Kec. Kabun, Kab. Rokan Hulu, Riau	100° 41' 32.23" E	0° 31' 52.67" U	2.07	2.07	26.82	No	02 January 2022
58	M.Nur hakim	Ds. Boncah Kesuma, Kec. Kabun, Kab. Rokan Hulu, Riau	100° 41' 35.47" E	0° 31' 52.69" U	2.06	2.06	21.65	No	02 January 2022

59	Ratiwen	Ds. Boncah Kesuma, Kec. Kabun, Kab. Rokan Hulu, Riau	100° 41' 38.71" E	0° 31' 52.71" U	2.06	2.06	31.12	No	02 January 2022
60	Suwanti	Ds. Boncah Kesuma, Kec. Kabun, Kab. Rokan Hulu, Riau	100° 41' 41.94" E	0° 31' 52.73" U	2.06	2.06	26.69	No	02 January 2022
61	Teguh	Ds. Boncah Kesuma, Kec. Kabun, Kab. Rokan Hulu, Riau	100° 41' 48.41" E	0° 31' 52.77" U	2.07	2.07	12.76	No	02 January 2022
62	Didik Mustofa	Ds. Boncah Kesuma, Kec. Kabun, Kab. Rokan Hulu, Riau	100° 41' 51.66" E	0° 31' 52.78" U	2.07	2.07	2.76	No	02 January 2022
63	Rastono	Ds. Boncah Kesuma, Kec. Kabun, Kab. Rokan Hulu, Riau	100° 41' 58.12" E	0° 31' 52.82" U	2.07	2.07	1.88	No	02 January 2022
64	Esti Pranowo	Ds. Boncah Kesuma, Kec. Kabun, Kab. Rokan Hulu, Riau	100° 42' 1.34" E	0° 31' 52.84" U	2.03	2.03	2.89	No	02 January 2022
65	Narja	Ds. Boncah Kesuma, Kec. Kabun, Kab. Rokan Hulu, Riau	100° 42' 4.59" E	0° 31' 52.87" U	2.12	2.12	14.05	No	02 January 2022
66	Maria magdalena p	Ds. Boncah Kesuma, Kec. Kabun, Kab. Rokan Hulu, Riau	100° 42' 7.84" E	0° 31' 52.88" U	1.40	1.40	12.17	No	02 January 2022
67	Yuni Rumiati	Ds. Boncah Kesuma, Kec. Kabun, Kab. Rokan Hulu, Riau	100° 42' 11.05" E	0° 31' 52.89" U	2.08	2.08	2.76	No	02 January 2022
68	Salbiyah	Ds. Boncah Kesuma, Kec. Kabun, Kab. Rokan Hulu, Riau	100° 42' 13.51" E	0° 31' 52.92" U	2.08	2.08	19.47	No	02 January 2022
69	Kasroji	Ds. Boncah Kesuma, Kec. Kabun, Kab. Rokan Hulu, Riau	100° 42' 17.52" E	0° 31' 52.94" U	2.06	2.06	6.36	No	02 January 2022
70	Taruni	Ds. Boncah Kesuma, Kec. Kabun, Kab. Rokan Hulu, Riau	100° 42' 24.16" E	0° 31' 52.98" U	1.85	1.85	25.36	No	02 January 2022
71	Miduk H.siregar	Ds. Boncah Kesuma, Kec. Kabun, Kab. Rokan Hulu, Riau	100° 42' 27.16" E	0° 31' 53.02" U	1.90	1.90	24.92	No	02 January 2022
72	H Siswanto	Ds. Boncah Kesuma, Kec. Kabun, Kab. Rokan Hulu, Riau	100° 42' 30.93" E	0° 31' 53.23" U	1.76	1.76	1.85	No	02 January 2022
73	Abdi Wijaya	Ds. Boncah Kesuma, Kec. Kabun, Kab. Rokan Hulu, Riau	100° 42' 33.6" E	0° 31' 48.79" U	4.10	4.10	4.65	No	02 January 2022
74	Ketut sutayasa	Ds. Boncah Kesuma, Kec. Kabun, Kab. Rokan Hulu, Riau	100° 42' 39.35" E	0° 31' 44.75" U	2.01	2.01	45.55	No	02 January 2022
75	Suliyem	Ds. Boncah Kesuma, Kec. Kabun, Kab. Rokan Hulu, Riau	100° 42' 34.39" E	0° 31' 44.89" U	1.28	1.28	21.34	No	02 January 2022
76	Purnomo	Ds. Boncah Kesuma, Kec. Kabun, Kab. Rokan Hulu, Riau	100° 42' 30.66" E	0° 31' 44.96" U	1.24	1.24	13.16	No	02 January 2022
77	Parsaroan Simamora	Ds. Boncah Kesuma, Kec. Kabun, Kab. Rokan Hulu, Riau	100° 42' 27.23" E	0° 31' 46.47" U	2.02	2.02	51.49	No	02 January 2022
78	Joko Suryono	Ds. Boncah Kesuma, Kec. Kabun, Kab. Rokan Hulu, Riau	100° 42' 23.98" E	0° 31' 46.44" U	2.01	2.01	31.13	No	02 January 2022
79	Rifa'i	Ds. Boncah Kesuma, Kec. Kabun, Kab. Rokan Hulu, Riau	100° 42' 17.52" E	0° 31' 46.39" U	1.96	1.96	31.79	No	02 January 2022
80	Suparto	Ds. Boncah Kesuma, Kec. Kabun, Kab. Rokan Hulu, Riau	100° 42' 11.05" E	0° 31' 46.34" U	1.94	1.94	15.90	No	02 January 2022
81	Pinta Sitepu	Ds. Boncah Kesuma, Kec. Kabun, Kab. Rokan Hulu, Riau	100° 42' 4.59" E	0° 31' 46.32" U	1.98	1.98	1.19	No	02 January 2022
82	Sudiman	Ds. Boncah Kesuma, Kec. Kabun, Kab. Rokan Hulu, Riau	100° 42' 2.16" E	0° 31' 46.3" U	0.96	0.96	0.77	No	02 January 2022
83	Eko Saryanto	Ds. Boncah Kesuma, Kec. Kabun, Kab. Rokan Hulu, Riau	100° 42' 1.38" E	0° 31' 41.49" U	1.11	1.11	0.20	No	02 January 2022
84	Harno	Ds. Boncah Kesuma, Kec. Kabun, Kab. Rokan Hulu, Riau	100° 42' 3.15" E	0° 31' 38.26" U	2.01	2.01	25.25	No	02 January 2022
85	Sam hasiholan Sitompul	Ds. Boncah Kesuma, Kec. Kabun, Kab. Rokan Hulu, Riau	100° 42' 9.32" E	0° 31' 30.98" U	1.81	1.81	41.68	No	02 January 2022
86	Tukirah	Ds. Boncah Kesuma, Kec. Kabun, Kab. Rokan Hulu, Riau	100° 42' 9.73" E	0° 31' 34.73" U	2.54	2.54	21.76	No	02 January 2022
87	Sunardi	Ds. Boncah Kesuma, Kec. Kabun, Kab. Rokan Hulu, Riau	100° 42' 9.69" E	0° 31' 38.34" U	1.89	1.89	29.96	No	02 January 2022
88	Minto Semin	Ds. Boncah Kesuma, Kec. Kabun, Kab. Rokan Hulu, Riau	100° 42' 9.64" E	0° 31' 41.53" U	1.95	1.95	31.85	No	02 January 2022
89	Suratman	Ds. Boncah Kesuma, Kec. Kabun, Kab. Rokan Hulu, Riau	100° 42' 4.2" E	0° 30' 47.94" U	2.11	2.11	3.52	No	02 January 2022

90	Tarmudi	Ds. Boncah Kesuma, Kec. Kabun, Kab. Rokan Hulu, Riau	100° 42' 1.84" E	0° 30' 47.93" U	1.94	1.94	24.20	No	02 January 2022
91	Widodo	Ds. Boncah Kesuma, Kec. Kabun, Kab. Rokan Hulu, Riau	100° 41' 58.7" E	0° 30' 47.92" U	2.00	2.00	21.99	No	02 January 2022
92	Muhammad	Ds. Boncah Kesuma, Kec. Kabun, Kab. Rokan Hulu, Riau	100° 41' 55.75" E	0° 30' 47.91" U	1.69	1.69	33.04	No	02 January 2022
93	Nyoman ley sutama	Ds. Boncah Kesuma, Kec. Kabun, Kab. Rokan Hulu, Riau	100° 41' 52.81" E	0° 30' 47.9" U	1.97	1.97	33.61	No	02 January 2022
94	M.efendi	Ds. Boncah Kesuma, Kec. Kabun, Kab. Rokan Hulu, Riau	100° 41' 49.59" E	0° 30' 47.91" U	2.03	2.03	38.15	No	02 January 2022
95	Sutrisno	Ds. Boncah Kesuma, Kec. Kabun, Kab. Rokan Hulu, Riau	100° 41' 46.34" E	0° 30' 47.89" U	1.99	1.99	35.78	No	02 January 2022
96	Todung Akher	Ds. Boncah Kesuma, Kec. Kabun, Kab. Rokan Hulu, Riau	100° 41' 43.11" E	0° 30' 47.9" U	2.00	2.00	33.06	No	02 January 2022
97	Tukimin	Ds. Boncah Kesuma, Kec. Kabun, Kab. Rokan Hulu, Riau	100° 41' 39.87" E	0° 30' 47.89" U	1.98	1.98	25.64	No	02 January 2022
98	Sabar	Ds. Boncah Kesuma, Kec. Kabun, Kab. Rokan Hulu, Riau	100° 41' 36.64" E	0° 30' 47.88" U	1.97	1.97	39.21	No	02 January 2022
99	Syaiful Rizal	Ds. Boncah Kesuma, Kec. Kabun, Kab. Rokan Hulu, Riau	100° 41' 33.4" E	0° 30' 47.88" U	1.97	1.97	20.44	No	02 January 2022
100	Sudarno	Ds. Boncah Kesuma, Kec. Kabun, Kab. Rokan Hulu, Riau	100° 41' 30.17" E	0° 30' 47.88" U	1.96	1.96	13.76	No	02 January 2022
101	Syaiful Rizal	Ds. Boncah Kesuma, Kec. Kabun, Kab. Rokan Hulu, Riau	100° 41' 26.93" E	0° 30' 47.87" U	1.96	1.96	22.30	No	02 January 2022
102	Sukarno	Ds. Boncah Kesuma, Kec. Kabun, Kab. Rokan Hulu, Riau	100° 41' 23.7" E	0° 30' 47.86" U	1.94	1.94	27.81	No	02 January 2022
103	Widodo	Ds. Boncah Kesuma, Kec. Kabun, Kab. Rokan Hulu, Riau	100° 41' 20.49" E	0° 30' 47.83" U	1.90	1.90	24.09	No	02 January 2022
104	Widodo	Ds. Boncah Kesuma, Kec. Kabun, Kab. Rokan Hulu, Riau	100° 41' 16.42" E	0° 30' 48.87" U	1.89	1.89	17.50	No	02 January 2022
105	Rosmawati	Ds. Boncah Kesuma, Kec. Kabun, Kab. Rokan Hulu, Riau	100° 41' 17.43" E	0° 30' 53.47" U	1.88	1.88	24.87	No	02 January 2022
106	Aidatul warni	Ds. Boncah Kesuma, Kec. Kabun, Kab. Rokan Hulu, Riau	100° 41' 22.03" E	0° 30' 53.54" U	2.59	2.59	19.10	No	02 January 2022
107	M.Mahmudin Halawa	Ds. Boncah Kesuma, Kec. Kabun, Kab. Rokan Hulu, Riau	100° 41' 26.83" E	0° 30' 53.61" U	2.05	2.05	30.74	No	02 January 2022
108	Karyadi	Ds. Boncah Kesuma, Kec. Kabun, Kab. Rokan Hulu, Riau	100° 41' 30.87" E	0° 30' 53.63" U	1.87	1.87	14.61	No	02 January 2022
109	Achmad tholib	Ds. Boncah Kesuma, Kec. Kabun, Kab. Rokan Hulu, Riau	100° 41' 16.4" E	0° 30' 44.69" U	2.06	2.06	23.60	No	02 January 2022
110	Mahat	Ds. Boncah Kesuma, Kec. Kabun, Kab. Rokan Hulu, Riau	100° 41' 16.41" E	0° 30' 40.35" U	2.05	2.05	31.37	No	02 January 2022
111	Wagiman	Ds. Boncah Kesuma, Kec. Kabun, Kab. Rokan Hulu, Riau	100° 41' 20.48" E	0° 30' 41.45" U	1.97	1.97	39.08	No	02 January 2022
112	Wariman	Ds. Boncah Kesuma, Kec. Kabun, Kab. Rokan Hulu, Riau	100° 41' 23.7" E	0° 30' 41.45" U	1.99	1.99	26.08	No	02 January 2022
113	M.Mahmudin Halawa	Ds. Boncah Kesuma, Kec. Kabun, Kab. Rokan Hulu, Riau	100° 41' 26.93" E	0° 30' 41.45" U	1.99	1.99	30.03	No	02 January 2022
114	Sontang Siregar	Ds. Boncah Kesuma, Kec. Kabun, Kab. Rokan Hulu, Riau	100° 41' 30.16" E	0° 30' 41.45" U	1.98	1.98	34.43	No	02 January 2022
115	Muirun	Ds. Boncah Kesuma, Kec. Kabun, Kab. Rokan Hulu, Riau	100° 41' 33.4" E	0° 30' 41.45" U	1.98	1.98	27.83	No	02 January 2022
116	Mahmuda siregar	Ds. Boncah Kesuma, Kec. Kabun, Kab. Rokan Hulu, Riau	100° 41' 36.63" E	0° 30' 41.45" U	1.97	1.97	23.55	No	02 January 2022
117	Todung Akher	Ds. Boncah Kesuma, Kec. Kabun, Kab. Rokan Hulu, Riau	100° 41' 39.87" E	0° 30' 41.45" U	1.97	1.97	30.40	No	02 January 2022
118	Paryadi	Ds. Boncah Kesuma, Kec. Kabun, Kab. Rokan Hulu, Riau	100° 41' 43.1" E	0° 30' 41.45" U	1.97	1.97	28.33	No	02 January 2022
119	Winarno	Ds. Boncah Kesuma, Kec. Kabun, Kab. Rokan Hulu, Riau	100° 41' 46.34" E	0° 30' 41.45" U	1.96	1.96	31.75	No	02 January 2022

120	Madeley susiyati	Ds. Boncah Kesuma, Kec. Kabun, Kab. Rokan Hulu, Riau	100° 41' 49.58" E	0° 30' 41.46" U	1.97	1.97	35.68	No	02 January 2022
121	Marsem apri asim	Ds. Boncah Kesuma, Kec. Kabun, Kab. Rokan Hulu, Riau	100° 41' 52.82" E	0° 30' 41.45" U	1.94	1.94	31.28	No	02 January 2022
122	Sontang siregar	Ds. Boncah Kesuma, Kec. Kabun, Kab. Rokan Hulu, Riau	100° 41' 55.79" E	0° 30' 41.43" U	1.66	1.66	32.62	No	02 January 2022
123	Aini nur azizah	Ds. Boncah Kesuma, Kec. Kabun, Kab. Rokan Hulu, Riau	100° 41' 58.76" E	0° 30' 41.46" U	1.93	1.93	22.09	No	02 January 2022
124	Ketut sutayasa	Ds. Boncah Kesuma, Kec. Kabun, Kab. Rokan Hulu, Riau	100° 42' 1.93" E	0° 30' 41.47" U	1.89	1.89	28.57	No	02 January 2022
125	Minggu parningotan siregar	Ds. Boncah Kesuma, Kec. Kabun, Kab. Rokan Hulu, Riau	100° 42' 5.2" E	0° 30' 41.49" U	2.05	2.05	31.70	No	02 January 2022
126	M Khusnun	Ds. Boncah Kesuma, Kec. Kabun, Kab. Rokan Hulu, Riau	100° 42' 5.24" E	0° 30' 35.06" U	2.06	2.06	27.12	No	02 January 2022
127	Warman	Ds. Boncah Kesuma, Kec. Kabun, Kab. Rokan Hulu, Riau	100° 42' 2" E	0° 30' 35.04" U	1.95	1.95	31.51	No	02 January 2022
128	Misman	Ds. Boncah Kesuma, Kec. Kabun, Kab. Rokan Hulu, Riau	100° 41' 58.81" E	0° 30' 35.02" U	2.01	2.01	32.67	No	02 January 2022
129	Ahmad hamdani	Ds. Boncah Kesuma, Kec. Kabun, Kab. Rokan Hulu, Riau	100° 41' 55.81" E	0° 30' 34.99" U	1.70	1.70	28.97	No	02 January 2022
130	Siti jamila	Ds. Boncah Kesuma, Kec. Kabun, Kab. Rokan Hulu, Riau	100° 41' 52.82" E	0° 30' 35.01" U	2.01	2.01	27.18	No	02 January 2022
131	M.Efendi	Ds. Boncah Kesuma, Kec. Kabun, Kab. Rokan Hulu, Riau	100° 41' 49.58" E	0° 30' 35.01" U	2.01	2.01	36.36	No	02 January 2022
132	Minggu parningotan s	Ds. Boncah Kesuma, Kec. Kabun, Kab. Rokan Hulu, Riau	100° 41' 46.34" E	0° 30' 35" U	2.01	2.01	37.20	No	02 January 2022
133	Suyono Nardi	Ds. Boncah Kesuma, Kec. Kabun, Kab. Rokan Hulu, Riau	100° 41' 43.1" E	0° 30' 34.99" U	2.01	2.01	26.47	No	02 January 2022
134	Sukirman	Ds. Boncah Kesuma, Kec. Kabun, Kab. Rokan Hulu, Riau	100° 41' 39.87" E	0° 30' 34.98" U	2.00	2.00	32.63	No	02 January 2022
135	Maryanto	Ds. Boncah Kesuma, Kec. Kabun, Kab. Rokan Hulu, Riau	100° 41' 36.64" E	0° 30' 34.98" U	2.00	2.00	29.29	No	02 January 2022
136	Kartini	Ds. Boncah Kesuma, Kec. Kabun, Kab. Rokan Hulu, Riau	100° 41' 33.4" E	0° 30' 34.97" U	2.00	2.00	32.70	No	02 January 2022
137	Ahmad Jumal	Ds. Boncah Kesuma, Kec. Kabun, Kab. Rokan Hulu, Riau	100° 41' 30.17" E	0° 30' 34.96" U	2.00	2.00	34.99	No	02 January 2022
138	Sutrisno	Ds. Boncah Kesuma, Kec. Kabun, Kab. Rokan Hulu, Riau	100° 41' 26.93" E	0° 30' 34.95" U	2.00	2.00	27.20	No	02 January 2022
139	Muksin	Ds. Boncah Kesuma, Kec. Kabun, Kab. Rokan Hulu, Riau	100° 41' 23.7" E	0° 30' 34.95" U	2.00	2.00	28.78	No	02 January 2022
140	Waljiyem	Ds. Boncah Kesuma, Kec. Kabun, Kab. Rokan Hulu, Riau	100° 41' 20.49" E	0° 30' 34.94" U	1.97	1.97	38.49	No	02 January 2022
141	Singkir	Ds. Boncah Kesuma, Kec. Kabun, Kab. Rokan Hulu, Riau	100° 41' 16.41" E	0° 30' 36.01" U	2.05	2.05	28.97	No	02 January 2022
142	Prawiro	Ds. Boncah Kesuma, Kec. Kabun, Kab. Rokan Hulu, Riau	100° 41' 16.45" E	0° 30' 31.7" U	2.01	2.01	30.28	No	02 January 2022
143	Syabtimarni	Ds. Boncah Kesuma, Kec. Kabun, Kab. Rokan Hulu, Riau	100° 41' 16.94" E	0° 30' 27.45" U	1.60	1.60	17.53	No	02 January 2022
144	Syabtimarni	Ds. Boncah Kesuma, Kec. Kabun, Kab. Rokan Hulu, Riau	100° 41' 20.46" E	0° 30' 28.39" U	2.00	2.00	19.38	No	02 January 2022
145	Qosim	Ds. Boncah Kesuma, Kec. Kabun, Kab. Rokan Hulu, Riau	100° 41' 23.69" E	0° 30' 28.42" U	2.01	2.01	40.41	No	02 January 2022
146	Herianto Simare mare	Ds. Boncah Kesuma, Kec. Kabun, Kab. Rokan Hulu, Riau	100° 41' 26.93" E	0° 30' 28.41" U	2.02	2.02	27.93	No	02 January 2022
147	Tukimin	Ds. Boncah Kesuma, Kec. Kabun, Kab. Rokan Hulu, Riau	100° 41' 30.17" E	0° 30' 28.43" U	2.01	2.01	40.05	No	02 January 2022
148	Muirun	Ds. Boncah Kesuma, Kec. Kabun, Kab. Rokan Hulu, Riau	100° 41' 33.4" E	0° 30' 28.44" U	2.01	2.01	28.61	No	02 January 2022
149	Marisih s	Ds. Boncah Kesuma, Kec. Kabun, Kab. Rokan Hulu, Riau	100° 41' 36.64" E	0° 30' 28.45" U	2.01	2.01	32.34	No	02 January 2022
150	Sumanto	Ds. Boncah Kesuma, Kec. Kabun, Kab. Rokan Hulu, Riau	100° 41' 39.88" E	0° 30' 28.45" U	2.02	2.02	34.46	No	02 January 2022

151	Usnan	Ds. Boncah Kesuma, Kec. Kabun, Kab. Rokan Hulu, Riau	100° 41' 43.12" E	0° 30' 28.46" U	2.00	2.00	29.09	No	02 January 2022
152	Nasikha	Ds. Boncah Kesuma, Kec. Kabun, Kab. Rokan Hulu, Riau	100° 41' 46.35" E	0° 30' 28.46" U	2.01	2.01	29.41	No	02 January 2022
153	Suaman	Ds. Boncah Kesuma, Kec. Kabun, Kab. Rokan Hulu, Riau	100° 41' 49.58" E	0° 30' 28.48" U	2.00	2.00	28.77	No	02 January 2022
154	Nuryani	Ds. Boncah Kesuma, Kec. Kabun, Kab. Rokan Hulu, Riau	100° 41' 52.81" E	0° 30' 28.47" U	2.02	2.02	30.75	No	02 January 2022
155	Siti jamila	Ds. Boncah Kesuma, Kec. Kabun, Kab. Rokan Hulu, Riau	100° 41' 55.84" E	0° 30' 28.49" U	1.74	1.74	32.05	No	02 January 2022
156	Slamet	Ds. Boncah Kesuma, Kec. Kabun, Kab. Rokan Hulu, Riau	100° 41' 58.86" E	0° 30' 28.52" U	2.00	2.00	35.79	No	02 January 2022
157	Muhammad Tupon	Ds. Boncah Kesuma, Kec. Kabun, Kab. Rokan Hulu, Riau	100° 42' 2.06" E	0° 30' 28.51" U	1.96	1.96	28.62	No	02 January 2022
158	Nasril Bahri Siregar	Ds. Boncah Kesuma, Kec. Kabun, Kab. Rokan Hulu, Riau	100° 42' 5.28" E	0° 30' 28.54" U	2.02	2.02	33.44	No	02 January 2022
159	Triantoro	Ds. Boncah Kesuma, Kec. Kabun, Kab. Rokan Hulu, Riau	100° 42' 5.32" E	0° 30' 22.05" U	1.96	1.96	34.91	No	02 January 2022
160	Mas'ud	Ds. Boncah Kesuma, Kec. Kabun, Kab. Rokan Hulu, Riau	100° 42' 2.12" E	0° 30' 22.01" U	1.99	1.99	39.71	No	02 January 2022
161	Mahmuda Siregar	Ds. Boncah Kesuma, Kec. Kabun, Kab. Rokan Hulu, Riau	100° 41' 58.9" E	0° 30' 22.01" U	1.98	1.98	34.95	No	02 January 2022
162	Wani	Ds. Boncah Kesuma, Kec. Kabun, Kab. Rokan Hulu, Riau	100° 41' 55.82" E	0° 30' 21.95" U	1.82	1.82	29.51	No	02 January 2022
163	Ramadhan harahap	Ds. Boncah Kesuma, Kec. Kabun, Kab. Rokan Hulu, Riau	100° 41' 52.76" E	0° 30' 22.03" U	1.93	1.93	36.80	No	02 January 2022
164	Hasoloan Sianturi	Ds. Boncah Kesuma, Kec. Kabun, Kab. Rokan Hulu, Riau	100° 41' 49.59" E	0° 30' 22" U	1.93	1.93	19.23	No	02 January 2022
165	Haifah	Ds. Boncah Kesuma, Kec. Kabun, Kab. Rokan Hulu, Riau	100° 41' 46.42" E	0° 30' 22" U	1.94	1.94	31.91	No	02 January 2022
166	Abdul Hamid	Ds. Boncah Kesuma, Kec. Kabun, Kab. Rokan Hulu, Riau	100° 41' 43.19" E	0° 30' 21.97" U	2.00	2.00	26.66	No	02 January 2022
167	NurLailanis	Ds. Boncah Kesuma, Kec. Kabun, Kab. Rokan Hulu, Riau	100° 41' 39.92" E	0° 30' 21.98" U	2.00	2.00	30.88	No	02 January 2022
168	Nariadi	Ds. Boncah Kesuma, Kec. Kabun, Kab. Rokan Hulu, Riau	100° 41' 36.65" E	0° 30' 21.95" U	1.99	1.99	28.71	No	02 January 2022
169	Sumarno	Ds. Boncah Kesuma, Kec. Kabun, Kab. Rokan Hulu, Riau	100° 41' 33.4" E	0° 30' 21.96" U	1.97	1.97	25.38	No	02 January 2022
170	Anter	Ds. Boncah Kesuma, Kec. Kabun, Kab. Rokan Hulu, Riau	100° 41' 30.18" E	0° 30' 21.95" U	1.96	1.96	30.52	No	02 January 2022
171	Sumitro	Ds. Boncah Kesuma, Kec. Kabun, Kab. Rokan Hulu, Riau	100° 41' 27.48" E	0° 30' 20.13" U	2.08	2.08	34.34	No	02 January 2022
172	Ahmad jumal	Ds. Boncah Kesuma, Kec. Kabun, Kab. Rokan Hulu, Riau	100° 41' 25.3" E	0° 30' 20.13" U	2.06	2.06	29.02	No	02 January 2022
173	Suwito	Ds. Boncah Kesuma, Kec. Kabun, Kab. Rokan Hulu, Riau	100° 41' 23.15" E	0° 30' 20.1" U	2.06	2.06	29.46	No	02 January 2022
174	Sudarno	Ds. Boncah Kesuma, Kec. Kabun, Kab. Rokan Hulu, Riau	100° 41' 20.91" E	0° 30' 20.14" U	2.20	2.20	13.86	No	02 January 2022
175	Riayadi	Ds. Boncah Kesuma, Kec. Kabun, Kab. Rokan Hulu, Riau	100° 41' 18.76" E	0° 30' 20.07" U	1.91	1.91	18.67	No	02 January 2022
176	Siti maryati	Ds. Boncah Kesuma, Kec. Kabun, Kab. Rokan Hulu, Riau	100° 41' 16.04" E	0° 30' 19.87" U	3.27	3.27	13.87	No	02 January 2022
177	Karyuni	Ds. Boncah Kesuma, Kec. Kabun, Kab. Rokan Hulu, Riau	100° 41' 30.11" E	0° 30' 15.13" U	2.23	2.23	18.85	No	02 January 2022
178	Tumon	Ds. Boncah Kesuma, Kec. Kabun, Kab. Rokan Hulu, Riau	100° 41' 33.39" E	0° 30' 15.25" U	2.12	2.12	15.34	No	02 January 2022
179	Hasoloan Sianturi	Ds. Boncah Kesuma, Kec. Kabun, Kab. Rokan Hulu, Riau	100° 41' 36.66" E	0° 30' 15.27" U	2.20	2.20	18.85	No	02 January 2022
180	Nur cholis	Ds. Boncah Kesuma, Kec. Kabun, Kab. Rokan Hulu, Riau	100° 41' 39.96" E	0° 30' 15.32" U	2.13	2.13	31.15	No	02 January 2022
181	Herbert Henry S	Ds. Boncah Kesuma, Kec. Kabun, Kab. Rokan Hulu, Riau	100° 41' 43.26" E	0° 30' 15.35" U	2.17	2.17	26.36	No	02 January 2022

182	Hotmer Panggabean	Ds. Boncah Kesuma, Kec. Kabun, Kab. Rokan Hulu, Riau	100° 41' 46.49" E	0° 30' 15.41" U	2.00	2.00	20.28	No	02 January 2022
183	Rudi herwindo	Ds. Boncah Kesuma, Kec. Kabun, Kab. Rokan Hulu, Riau	100° 41' 49.6" E	0° 30' 15.42" U	2.00	2.00	14.08	No	02 January 2022
184	Misman	Ds. Boncah Kesuma, Kec. Kabun, Kab. Rokan Hulu, Riau	100° 41' 52.71" E	0° 30' 15.45" U	1.99	1.99	27.13	No	02 January 2022
185	Sudiaman S	Ds. Boncah Kesuma, Kec. Kabun, Kab. Rokan Hulu, Riau	100° 41' 55.81" E	0° 30' 15.45" U	1.92	1.92	38.83	No	02 January 2022
186	Sukarno	Ds. Boncah Kesuma, Kec. Kabun, Kab. Rokan Hulu, Riau	100° 41' 58.93" E	0° 30' 15.48" U	1.99	1.99	36.36	No	02 January 2022
187	Berkati zidomi	Ds. Boncah Kesuma, Kec. Kabun, Kab. Rokan Hulu, Riau	100° 42' 5.37" E	0° 30' 15.54" U	1.92	1.92	15.72	No	02 January 2022
188	Budi hairudin	Ds. Boncah Kesuma, Kec. Kabun, Kab. Rokan Hulu, Riau	100° 42' 5.4" E	0° 30' 8.56" U	2.12	2.12	35.57	No	02 January 2022
189	Pebri Yendi	Ds. Boncah Kesuma, Kec. Kabun, Kab. Rokan Hulu, Riau	100° 42' 2.24" E	0° 30' 8.55" U	2.30	2.30	20.94	No	02 January 2022
190	Winarno	Ds. Boncah Kesuma, Kec. Kabun, Kab. Rokan Hulu, Riau	100° 41' 59" E	0° 30' 8.5" U	2.24	2.24	22.70	No	02 January 2022
191	Sutikno	Ds. Boncah Kesuma, Kec. Kabun, Kab. Rokan Hulu, Riau	100° 41' 44.73" E	0° 30' 10.36" U	1.92	1.92	14.26	No	02 January 2022
192	Herbert Henry S	Ds. Boncah Kesuma, Kec. Kabun, Kab. Rokan Hulu, Riau	100° 41' 38.33" E	0° 30' 10.28" U	1.99	1.99	19.16	No	02 January 2022
193	Tumon	Ds. Boncah Kesuma, Kec. Kabun, Kab. Rokan Hulu, Riau	100° 41' 31.66" E	0° 30' 10.24" U	1.87	1.87	13.67	No	02 January 2022
194	Fatoni	Ds. Boncah Kesuma, Kec. Kabun, Kab. Rokan Hulu, Riau	100° 42' 2.55" E	0° 30' 3.67" U	1.98	1.98	25.85	No	02 January 2022
195	Suhadi	Ds. Boncah Kesuma, Kec. Kabun, Kab. Rokan Hulu, Riau	100° 42' 38.09" E	0° 30' 7.4" U	1.99	1.99	28.00	No	02 January 2022
196	Mohammad Yusuf	Ds. Boncah Kesuma, Kec. Kabun, Kab. Rokan Hulu, Riau	100° 42' 35.93" E	0° 30' 7.41" U	1.98	1.98	25.15	No	02 January 2022
197	Dardji	Ds. Boncah Kesuma, Kec. Kabun, Kab. Rokan Hulu, Riau	100° 42' 33.77" E	0° 30' 7.35" U	2.02	2.02	37.11	No	02 January 2022
198	Hero	Ds. Boncah Kesuma, Kec. Kabun, Kab. Rokan Hulu, Riau	100° 42' 31.6" E	0° 30' 7.34" U	2.02	2.02	35.89	No	02 January 2022
199	Suhardi	Ds. Boncah Kesuma, Kec. Kabun, Kab. Rokan Hulu, Riau	100° 42' 29.43" E	0° 30' 7.33" U	2.01	2.01	29.83	No	02 January 2022
200	Valle Sianturi	Ds. Boncah Kesuma, Kec. Kabun, Kab. Rokan Hulu, Riau	100° 42' 26.73" E	0° 30' 7.3" U	3.02	3.02	24.79	No	02 January 2022
201	Mustahmid	Ds. Boncah Kesuma, Kec. Kabun, Kab. Rokan Hulu, Riau	100° 42' 23.79" E	0° 30' 7.31" U	2.48	2.48	43.66	No	02 January 2022
202	Supardi	Ds. Boncah Kesuma, Kec. Kabun, Kab. Rokan Hulu, Riau	100° 42' 21.1" E	0° 30' 7.26" U	2.58	2.58	31.27	No	02 January 2022
203	Linggom Hs	Ds. Boncah Kesuma, Kec. Kabun, Kab. Rokan Hulu, Riau	100° 42' 18.64" E	0° 30' 7.22" U	2.06	2.06	16.14	No	02 January 2022
204	Ade aminah	Ds. Boncah Kesuma, Kec. Kabun, Kab. Rokan Hulu, Riau	100° 42' 16.47" E	0° 30' 7.24" U	2.05	2.05	35.28	No	02 January 2022
205	Masnah	Ds. Boncah Kesuma, Kec. Kabun, Kab. Rokan Hulu, Riau	100° 42' 14.3" E	0° 30' 7.22" U	2.07	2.07	22.77	No	02 January 2022
206	Sri Dani	Ds. Boncah Kesuma, Kec. Kabun, Kab. Rokan Hulu, Riau	100° 42' 12.14" E	0° 30' 7.21" U	2.05	2.05	27.76	No	02 January 2022
207	Siswoyo	Ds. Boncah Kesuma, Kec. Kabun, Kab. Rokan Hulu, Riau	100° 42' 10.14" E	0° 30' 7.2" U	1.78	1.78	21.89	No	02 January 2022
208	Sudiman	Ds. Boncah Kesuma, Kec. Kabun, Kab. Rokan Hulu, Riau	100° 42' 8.06" E	0° 30' 7.24" U	2.18	2.18	27.97	No	02 January 2022
209	Sukono	Ds. Boncah Kesuma, Kec. Kabun, Kab. Rokan Hulu, Riau	100° 42' 8.47" E	0° 30' 15.54" U	1.94	1.94	37.98	No	02 January 2022
210	Muhammad Yusuf	Ds. Boncah Kesuma, Kec. Kabun, Kab. Rokan Hulu, Riau	100° 42' 11.66" E	0° 30' 15.53" U	2.05	2.05	2.77	No	02 January 2022
211	Siswanto	Ds. Boncah Kesuma, Kec. Kabun, Kab. Rokan Hulu, Riau	100° 42' 14.9" E	0° 30' 15.55" U	2.03	2.03	2.15	No	02 January 2022
212	Sukono	Ds. Boncah Kesuma, Kec. Kabun, Kab. Rokan Hulu, Riau	100° 42' 18.1" E	0° 30' 15.55" U	2.01	2.01	24.05	No	02 January 2022

213	Nasril bahri S	Ds. Boncah Kesuma, Kec. Kabun, Kab. Rokan Hulu, Riau	100° 42' 24.66" E	0° 30' 15.57" U	2.05	2.05	25.39	No	02 January 2022
214	asmardi alidin	Ds. Boncah Kesuma, Kec. Kabun, Kab. Rokan Hulu, Riau	100° 42' 27.86" E	0° 30' 15.58" U	2.04	2.04	36.80	No	02 January 2022
215	I Wayan Kartama	Ds. Boncah Kesuma, Kec. Kabun, Kab. Rokan Hulu, Riau	100° 42' 31.07" E	0° 30' 15.6" U	2.06	2.06	45.06	No	02 January 2022
216	Wadinah	Ds. Boncah Kesuma, Kec. Kabun, Kab. Rokan Hulu, Riau	100° 42' 34.3" E	0° 30' 15.61" U	2.07	2.07	27.46	No	02 January 2022
217	Rudi wansyah	Ds. Boncah Kesuma, Kec. Kabun, Kab. Rokan Hulu, Riau	100° 42' 36.68" E	0° 30' 15.61" U	2.06	2.06	2.59	No	02 January 2022
218	Mansyur	Ds. Boncah Kesuma, Kec. Kabun, Kab. Rokan Hulu, Riau	100° 42' 37.54" E	0° 30' 22.18" U	1.97	1.97	29.40	No	02 January 2022
219	Titin hikmawati	Ds. Boncah Kesuma, Kec. Kabun, Kab. Rokan Hulu, Riau	100° 42' 34.3" E	0° 30' 22.17" U	1.97	1.97	31.04	No	02 January 2022
220	Abdul Muin	Ds. Boncah Kesuma, Kec. Kabun, Kab. Rokan Hulu, Riau	100° 42' 31.07" E	0° 30' 22.16" U	1.96	1.96	30.18	No	02 January 2022
221	Abdul Muin	Ds. Boncah Kesuma, Kec. Kabun, Kab. Rokan Hulu, Riau	100° 42' 27.85" E	0° 30' 22.16" U	1.95	1.95	31.17	No	02 January 2022
222	Asnel	Ds. Boncah Kesuma, Kec. Kabun, Kab. Rokan Hulu, Riau	100° 42' 24.64" E	0° 30' 22.14" U	1.96	1.96	27.29	No	02 January 2022
223	Willem Makatipu	Ds. Boncah Kesuma, Kec. Kabun, Kab. Rokan Hulu, Riau	100° 42' 21.35" E	0° 30' 22.12" U	2.05	2.05	30.78	No	02 January 2022
224	Sri Dani	Ds. Boncah Kesuma, Kec. Kabun, Kab. Rokan Hulu, Riau	100° 42' 18.09" E	0° 30' 22.1" U	1.93	1.93	28.08	No	02 January 2022
225	Harni	Ds. Boncah Kesuma, Kec. Kabun, Kab. Rokan Hulu, Riau	100° 42' 14.9" E	0° 30' 22.09" U	1.98	1.98	32.16	No	02 January 2022
226	Agus sani	Ds. Boncah Kesuma, Kec. Kabun, Kab. Rokan Hulu, Riau	100° 42' 11.66" E	0° 30' 22.07" U	1.99	1.99	41.21	No	02 January 2022
227	Sukirno	Ds. Boncah Kesuma, Kec. Kabun, Kab. Rokan Hulu, Riau	100° 42' 8.48" E	0° 30' 22.06" U	1.93	1.93	43.16	No	02 January 2022
228	Supriyanti	Ds. Boncah Kesuma, Kec. Kabun, Kab. Rokan Hulu, Riau	100° 42' 8.48" E	0° 30' 28.55" U	1.93	1.93	34.68	No	02 January 2022
229	Muhammad mutopipin	Ds. Boncah Kesuma, Kec. Kabun, Kab. Rokan Hulu, Riau	100° 42' 11.66" E	0° 30' 28.56" U	2.00	2.00	34.63	No	02 January 2022
230	Sutiyah	Ds. Boncah Kesuma, Kec. Kabun, Kab. Rokan Hulu, Riau	100° 42' 14.89" E	0° 30' 28.56" U	1.99	1.99	32.38	No	02 January 2022
231	Sri wahyuni	Ds. Boncah Kesuma, Kec. Kabun, Kab. Rokan Hulu, Riau	100° 42' 18.08" E	0° 30' 28.56" U	1.93	1.93	36.88	No	02 January 2022
232	Endang suzana	Ds. Boncah Kesuma, Kec. Kabun, Kab. Rokan Hulu, Riau	100° 42' 21.33" E	0° 30' 28.57" U	2.06	2.06	33.84	No	02 January 2022
233	Yuliana	Ds. Boncah Kesuma, Kec. Kabun, Kab. Rokan Hulu, Riau	100° 42' 24.62" E	0° 30' 28.57" U	1.97	1.97	36.65	No	02 January 2022
234	harwanto	Ds. Boncah Kesuma, Kec. Kabun, Kab. Rokan Hulu, Riau	100° 42' 27.85" E	0° 30' 28.58" U	1.97	1.97	39.10	No	02 January 2022
235	Masluri	Ds. Boncah Kesuma, Kec. Kabun, Kab. Rokan Hulu, Riau	100° 42' 31.07" E	0° 30' 28.58" U	1.97	1.97	35.77	No	02 January 2022
236	Ferry Rahmadi	Ds. Boncah Kesuma, Kec. Kabun, Kab. Rokan Hulu, Riau	100° 42' 34.3" E	0° 30' 28.59" U	1.98	1.98	37.63	No	02 January 2022
237	Taufik Hidayat	Ds. Boncah Kesuma, Kec. Kabun, Kab. Rokan Hulu, Riau	100° 42' 37.53" E	0° 30' 28.6" U	1.97	1.97	39.45	No	02 January 2022
238	Samsul bahri s	Ds. Boncah Kesuma, Kec. Kabun, Kab. Rokan Hulu, Riau	100° 42' 37.53" E	0° 30' 35.12" U	2.03	2.03	28.13	No	02 January 2022
239	Muhammad	Ds. Boncah Kesuma, Kec. Kabun, Kab. Rokan Hulu, Riau	100° 42' 34.3" E	0° 30' 35.11" U	2.03	2.03	42.50	No	02 January 2022
240	Siti khalima tusa'diyah	Ds. Boncah Kesuma, Kec. Kabun, Kab. Rokan Hulu, Riau	100° 42' 31.08" E	0° 30' 35.09" U	2.00	2.00	30.74	No	02 January 2022
241	Gatot Mulyono	Ds. Boncah Kesuma, Kec. Kabun, Kab. Rokan Hulu, Riau	100° 42' 27.85" E	0° 30' 35.09" U	2.04	2.04	39.07	No	02 January 2022
242	Suhaimi	Ds. Boncah Kesuma, Kec. Kabun, Kab. Rokan Hulu, Riau	100° 42' 24.61" E	0° 30' 35.08" U	2.01	2.01	41.64	No	02 January 2022
243	Kalimah	Ds. Boncah Kesuma, Kec. Kabun, Kab. Rokan Hulu, Riau	100° 42' 21.32" E	0° 30' 35.08" U	2.10	2.10	32.13	No	02 January 2022

244	Parmi	Ds. Boncah Kesuma, Kec. Kabun, Kab. Rokan Hulu, Riau	100° 42' 18.07" E	0° 30' 35.08" U	1.95	1.95	29.38	No	02 January 2022
245	Guno wikarto	Ds. Boncah Kesuma, Kec. Kabun, Kab. Rokan Hulu, Riau	100° 42' 14.89" E	0° 30' 35.08" U	2.02	2.02	32.00	No	02 January 2022
246	Fatori	Ds. Boncah Kesuma, Kec. Kabun, Kab. Rokan Hulu, Riau	100° 42' 11.66" E	0° 30' 35.08" U	2.01	2.01	17.00	No	02 January 2022
247	Marihot Silaban	Ds. Boncah Kesuma, Kec. Kabun, Kab. Rokan Hulu, Riau	100° 42' 8.47" E	0° 30' 35.08" U	1.95	1.95	27.73	No	02 January 2022
248	Sidri rizqi yuniati	Ds. Boncah Kesuma, Kec. Kabun, Kab. Rokan Hulu, Riau	100° 42' 8.47" E	0° 30' 41.51" U	1.89	1.89	15.77	No	02 January 2022
249	Sri Andrianti	Ds. Boncah Kesuma, Kec. Kabun, Kab. Rokan Hulu, Riau	100° 42' 11.66" E	0° 30' 41.52" U	1.95	1.95	33.39	No	02 January 2022
250	Eka Mardiyanti	Ds. Boncah Kesuma, Kec. Kabun, Kab. Rokan Hulu, Riau	100° 42' 14.9" E	0° 30' 41.54" U	1.97	1.97	28.54	No	02 January 2022
251	Sukis Haryanto	Ds. Boncah Kesuma, Kec. Kabun, Kab. Rokan Hulu, Riau	100° 42' 18.07" E	0° 30' 41.53" U	1.86	1.86	34.44	No	02 January 2022
252	Affika Fitriyanti	Ds. Boncah Kesuma, Kec. Kabun, Kab. Rokan Hulu, Riau	100° 42' 21.29" E	0° 30' 41.55" U	2.03	2.03	31.54	No	02 January 2022
253	Marno	Ds. Boncah Kesuma, Kec. Kabun, Kab. Rokan Hulu, Riau	100° 42' 24.59" E	0° 30' 41.57" U	1.97	1.97	36.22	No	02 January 2022
254	Sutrisno	Ds. Boncah Kesuma, Kec. Kabun, Kab. Rokan Hulu, Riau	100° 42' 27.86" E	0° 30' 41.57" U	1.99	1.99	32.97	No	02 January 2022
255	Yulia Hastuti	Ds. Boncah Kesuma, Kec. Kabun, Kab. Rokan Hulu, Riau	100° 42' 31.07" E	0° 30' 41.57" U	1.91	1.91	32.50	No	02 January 2022
256	Tawar	Ds. Boncah Kesuma, Kec. Kabun, Kab. Rokan Hulu, Riau	100° 42' 34.25" E	0° 30' 41.59" U	1.94	1.94	32.20	No	02 January 2022
257	Ngatinah	Ds. Boncah Kesuma, Kec. Kabun, Kab. Rokan Hulu, Riau	100° 42' 37.51" E	0° 30' 41.63" U	2.00	2.00	35.37	No	02 January 2022
258	Bi'at	Ds. Boncah Kesuma, Kec. Kabun, Kab. Rokan Hulu, Riau	100° 42' 40.79" E	0° 30' 41.63" U	1.97	1.97	33.93	No	02 January 2022
259	Kamsuri	Ds. Boncah Kesuma, Kec. Kabun, Kab. Rokan Hulu, Riau	100° 42' 44" E	0° 30' 41.63" U	1.92	1.92	27.77	No	02 January 2022
260	Muhammad nastainu	Ds. Boncah Kesuma, Kec. Kabun, Kab. Rokan Hulu, Riau	100° 42' 47.21" E	0° 30' 41.65" U	1.96	1.96	24.76	No	02 January 2022
261	Misyono	Ds. Boncah Kesuma, Kec. Kabun, Kab. Rokan Hulu, Riau	100° 42' 50.4" E	0° 30' 41.65" U	1.90	1.90	32.63	No	02 January 2022
262	Sugiarto	Ds. Boncah Kesuma, Kec. Kabun, Kab. Rokan Hulu, Riau	100° 42' 53.6" E	0° 30' 41.7" U	1.98	1.98	13.81	No	02 January 2022
263	Syahrudin Tanjung	Ds. Boncah Kesuma, Kec. Kabun, Kab. Rokan Hulu, Riau	100° 42' 56.89" E	0° 30' 41.69" U	1.99	1.99	20.41	No	02 January 2022
264	Supriyanti	Ds. Boncah Kesuma, Kec. Kabun, Kab. Rokan Hulu, Riau	100° 43' 0.19" E	0° 30' 41.75" U	2.01	2.01	27.20	No	02 January 2022
265	Siti morti Hj	Ds. Boncah Kesuma, Kec. Kabun, Kab. Rokan Hulu, Riau	100° 43' 3.39" E	0° 30' 41.79" U	1.94	1.94	27.36	No	02 January 2022
266	Dwi Liswidarti	Ds. Boncah Kesuma, Kec. Kabun, Kab. Rokan Hulu, Riau	100° 43' 6.57" E	0° 30' 41.83" U	1.99	1.99	13.59	No	02 January 2022
267	Agus Riyanto	Ds. Boncah Kesuma, Kec. Kabun, Kab. Rokan Hulu, Riau	100° 43' 9.81" E	0° 30' 41.78" U	2.00	2.00	28.46	No	02 January 2022
268	Asih Hasanah	Ds. Boncah Kesuma, Kec. Kabun, Kab. Rokan Hulu, Riau	100° 43' 10.65" E	0° 30' 35.31" U	2.05	2.05	3.18	No	02 January 2022
269	Asmardi Alidin	Ds. Boncah Kesuma, Kec. Kabun, Kab. Rokan Hulu, Riau	100° 43' 6.59" E	0° 30' 35.23" U	1.99	1.99	22.77	No	02 January 2022
270	Sri wahyuni	Ds. Boncah Kesuma, Kec. Kabun, Kab. Rokan Hulu, Riau	100° 43' 3.4" E	0° 30' 35.22" U	2.01	2.01	24.46	No	02 January 2022
271	Fatoni Ahmad Dasuki HM	Ds. Boncah Kesuma, Kec. Kabun, Kab. Rokan Hulu, Riau	100° 43' 0.18" E	0° 30' 35.21" U	2.04	2.04	20.41	No	02 January 2022
272	Hendra saputra	Ds. Boncah Kesuma, Kec. Kabun, Kab. Rokan Hulu, Riau	100° 42' 56.92" E	0° 30' 35.19" U	2.07	2.07	32.37	No	02 January 2022
273	Ahmad Sujadi	Ds. Boncah Kesuma, Kec. Kabun, Kab. Rokan Hulu, Riau	100° 42' 53.68" E	0° 30' 35.17" U	2.03	2.03	37.06	No	02 January 2022
274	Abdul Aziz	Ds. Boncah Kesuma, Kec. Kabun, Kab. Rokan Hulu, Riau	100° 42' 50.47" E	0° 30' 35.14" U	2.05	2.05	41.92	No	02 January 2022

275	H.Sulaksono	Ds. Boncah Kesuma, Kec. Kabun, Kab. Rokan Hulu, Riau	100° 42' 47.24" E	0° 30' 35.14" U	2.05	2.05	26.86	No	02 January 2022
276	Mujiono	Ds. Boncah Kesuma, Kec. Kabun, Kab. Rokan Hulu, Riau	100° 42' 44" E	0° 30' 35.13" U	2.04	2.04	41.85	No	02 January 2022
277	Agus riyanti	Ds. Boncah Kesuma, Kec. Kabun, Kab. Rokan Hulu, Riau	100° 42' 40.77" E	0° 30' 35.13" U	2.04	2.04	17.78	No	02 January 2022
278	Aris Suari	Ds. Boncah Kesuma, Kec. Kabun, Kab. Rokan Hulu, Riau	100° 42' 40.77" E	0° 30' 28.61" U	1.97	1.97	43.59	No	02 January 2022
279	Supardi	Ds. Boncah Kesuma, Kec. Kabun, Kab. Rokan Hulu, Riau	100° 42' 44" E	0° 30' 28.62" U	1.96	1.96	37.61	No	02 January 2022
280	Qomariah	Ds. Boncah Kesuma, Kec. Kabun, Kab. Rokan Hulu, Riau	100° 42' 47.24" E	0° 30' 28.63" U	1.95	1.95	32.25	No	02 January 2022
281	Samsul Siburian	Ds. Boncah Kesuma, Kec. Kabun, Kab. Rokan Hulu, Riau	100° 42' 50.47" E	0° 30' 28.64" U	1.95	1.95	32.84	No	02 January 2022
282	Ruslan	Ds. Boncah Kesuma, Kec. Kabun, Kab. Rokan Hulu, Riau	100° 42' 53.71" E	0° 30' 28.66" U	1.95	1.95	33.44	No	02 January 2022
283	Sapuan	Ds. Boncah Kesuma, Kec. Kabun, Kab. Rokan Hulu, Riau	100° 42' 56.94" E	0° 30' 28.68" U	1.96	1.96	37.14	No	02 January 2022
284	Nur Lailanis	Ds. Boncah Kesuma, Kec. Kabun, Kab. Rokan Hulu, Riau	100° 43' 0.18" E	0° 30' 28.69" U	1.97	1.97	25.30	No	02 January 2022
285	Sugianto	Ds. Boncah Kesuma, Kec. Kabun, Kab. Rokan Hulu, Riau	100° 43' 3.41" E	0° 30' 28.71" U	1.98	1.98	29.77	No	02 January 2022
286	Syahir	Ds. Boncah Kesuma, Kec. Kabun, Kab. Rokan Hulu, Riau	100° 43' 6.65" E	0° 30' 28.72" U	1.99	1.99	24.05	No	02 January 2022
287	Mutmainah	Ds. Boncah Kesuma, Kec. Kabun, Kab. Rokan Hulu, Riau	100° 43' 9.88" E	0° 30' 28.74" U	1.96	1.96	28.42	No	02 January 2022
288	Muhammad al azhar	Ds. Boncah Kesuma, Kec. Kabun, Kab. Rokan Hulu, Riau	100° 43' 9.9" E	0° 30' 22.31" U	1.94	1.94	17.80	No	02 January 2022
289	Muhaimin	Ds. Boncah Kesuma, Kec. Kabun, Kab. Rokan Hulu, Riau	100° 43' 6.66" E	0° 30' 22.31" U	1.98	1.98	21.87	No	02 January 2022
290	Mhd husein lubis	Ds. Boncah Kesuma, Kec. Kabun, Kab. Rokan Hulu, Riau	100° 43' 3.41" E	0° 30' 22.29" U	1.97	1.97	30.22	No	02 January 2022
291	Dumasari	Ds. Boncah Kesuma, Kec. Kabun, Kab. Rokan Hulu, Riau	100° 43' 0.18" E	0° 30' 22.28" U	1.97	1.97	25.32	No	02 January 2022
292	Mukadi	Ds. Boncah Kesuma, Kec. Kabun, Kab. Rokan Hulu, Riau	100° 42' 56.94" E	0° 30' 22.26" U	1.98	1.98	24.41	No	02 January 2022
293	Arlen	Ds. Boncah Kesuma, Kec. Kabun, Kab. Rokan Hulu, Riau	100° 42' 53.71" E	0° 30' 22.25" U	1.98	1.98	31.27	No	02 January 2022
294	Joko Supriyono	Ds. Boncah Kesuma, Kec. Kabun, Kab. Rokan Hulu, Riau	100° 42' 50.48" E	0° 30' 22.24" U	1.98	1.98	31.90	No	02 January 2022
295	Sajianto	Ds. Boncah Kesuma, Kec. Kabun, Kab. Rokan Hulu, Riau	100° 42' 47.24" E	0° 30' 22.23" U	1.98	1.98	35.00	No	02 January 2022
296	Titin hikmawati	Ds. Boncah Kesuma, Kec. Kabun, Kab. Rokan Hulu, Riau	100° 42' 44.01" E	0° 30' 22.21" U	1.98	1.98	31.38	No	02 January 2022
297	Khairum	Ds. Boncah Kesuma, Kec. Kabun, Kab. Rokan Hulu, Riau	100° 42' 40.77" E	0° 30' 22.2" U	1.97	1.97	19.77	No	02 January 2022
298	Samud	Ds. Boncah Kesuma, Kec. Kabun, Kab. Rokan Hulu, Riau	100° 42' 40.78" E	0° 30' 15.63" U	2.07	2.07	34.20	No	02 January 2022
299	Abd Wahob S	Ds. Boncah Kesuma, Kec. Kabun, Kab. Rokan Hulu, Riau	100° 42' 44.01" E	0° 30' 15.68" U	2.03	2.03	30.30	No	02 January 2022
300	Djamari	Ds. Boncah Kesuma, Kec. Kabun, Kab. Rokan Hulu, Riau	100° 42' 47.24" E	0° 30' 15.7" U	2.04	2.04	33.32	No	02 January 2022
301	Murdoyo	Ds. Boncah Kesuma, Kec. Kabun, Kab. Rokan Hulu, Riau	100° 42' 50.48" E	0° 30' 15.73" U	2.02	2.02	37.12	No	02 January 2022
302	Muhammad al azhar	Ds. Boncah Kesuma, Kec. Kabun, Kab. Rokan Hulu, Riau	100° 42' 53.71" E	0° 30' 15.75" U	2.01	2.01	33.44	No	02 January 2022
303	Samud	Ds. Boncah Kesuma, Kec. Kabun, Kab. Rokan Hulu, Riau	100° 42' 56.94" E	0° 30' 15.78" U	2.00	2.00	37.39	No	02 January 2022
304	Zamzami	Ds. Boncah Kesuma, Kec. Kabun, Kab. Rokan Hulu, Riau	100° 43' 0.18" E	0° 30' 15.81" U	2.00	2.00	37.67	No	02 January 2022
305	Suwarno	Ds. Boncah Kesuma, Kec. Kabun, Kab. Rokan Hulu, Riau	100° 43' 3.41" E	0° 30' 15.84" U	2.00	2.00	36.08	No	02 January 2022

306	Hajir	Ds. Boncah Kesuma, Kec. Kabun, Kab. Rokan Hulu, Riau	100° 43' 6.66" E	0° 30' 15.85" U	2.02	2.02	35.22	No	02 January 2022
307	Kasman	Ds. Boncah Kesuma, Kec. Kabun, Kab. Rokan Hulu, Riau	100° 43' 9.92" E	0° 30' 15.84" U	2.04	2.04	35.56	No	02 January 2022
308	Guno Wikarto	Ds. Boncah Kesuma, Kec. Kabun, Kab. Rokan Hulu, Riau	100° 43' 9.95" E	0° 30' 9.27" U	2.08	2.08	33.73	No	02 January 2022
309	Agus Sugito	Ds. Boncah Kesuma, Kec. Kabun, Kab. Rokan Hulu, Riau	100° 43' 6.66" E	0° 30' 9.29" U	2.02	2.02	23.29	No	02 January 2022
310	Suimin	Ds. Boncah Kesuma, Kec. Kabun, Kab. Rokan Hulu, Riau	100° 43' 3.43" E	0° 30' 9.32" U	1.99	1.99	36.25	No	02 January 2022
311	Suimin	Ds. Boncah Kesuma, Kec. Kabun, Kab. Rokan Hulu, Riau	100° 43' 0.2" E	0° 30' 9.28" U	2.03	2.03	25.53	No	02 January 2022
312	Paryadi	Ds. Boncah Kesuma, Kec. Kabun, Kab. Rokan Hulu, Riau	100° 42' 56.94" E	0° 30' 9.26" U	2.00	2.00	32.07	No	02 January 2022
313	Tumijo	Ds. Boncah Kesuma, Kec. Kabun, Kab. Rokan Hulu, Riau	100° 42' 53.71" E	0° 30' 9.23" U	1.99	1.99	37.10	No	02 January 2022
314	Setiono	Ds. Boncah Kesuma, Kec. Kabun, Kab. Rokan Hulu, Riau	100° 42' 50.49" E	0° 30' 9.21" U	1.97	1.97	33.98	No	02 January 2022
315	Agus riyanto	Ds. Boncah Kesuma, Kec. Kabun, Kab. Rokan Hulu, Riau	100° 42' 47.25" E	0° 30' 9.17" U	2.00	2.00	32.44	No	02 January 2022
316	Ihwanudin	Ds. Boncah Kesuma, Kec. Kabun, Kab. Rokan Hulu, Riau	100° 42' 44" E	0° 30' 9.13" U	1.97	1.97	34.47	No	02 January 2022
317	Polman manik	Ds. Boncah Kesuma, Kec. Kabun, Kab. Rokan Hulu, Riau	100° 42' 40.77" E	0° 30' 9.11" U	1.95	1.95	35.23	No	02 January 2022
318	Pramono	Ds. Boncah Kesuma, Kec. Kabun, Kab. Rokan Hulu, Riau	100° 42' 42.35" E	0° 30' 4.23" U	2.08	2.08	27.38	No	02 January 2022
319	Sayo	Ds. Boncah Kesuma, Kec. Kabun, Kab. Rokan Hulu, Riau	100° 42' 48.93" E	0° 30' 4.1" U	2.29	2.29	33.18	No	02 January 2022
320	Sidri rizqi yuniati	Ds. Boncah Kesuma, Kec. Kabun, Kab. Rokan Hulu, Riau	100° 42' 55.33" E	0° 30' 4.35" U	2.02	2.02	22.04	No	02 January 2022
321	Wajib	Ds. Boncah Kesuma, Kec. Kabun, Kab. Rokan Hulu, Riau	100° 43' 1.82" E	0° 30' 4.32" U	2.11	2.11	38.92	No	02 January 2022
322	Endang triyani	Ds. Boncah Kesuma, Kec. Kabun, Kab. Rokan Hulu, Riau	100° 43' 6.69" E	0° 30' 2.69" U	2.09	2.09	29.63	No	02 January 2022
323	Wartono	Ds. Boncah Kesuma, Kec. Kabun, Kab. Rokan Hulu, Riau	100° 43' 9.99" E	0° 30' 2.73" U	2.03	2.03	11.14	No	02 January 2022
324	Wahid alhuda	Ds. Boncah Kesuma, Kec. Kabun, Kab. Rokan Hulu, Riau	100° 43' 10.58" E	0° 29' 54.07" U	2.32	2.32	13.57	No	02 January 2022
325	Sastro Mulyono	Ds. Boncah Kesuma, Kec. Kabun, Kab. Rokan Hulu, Riau	100° 43' 8.34" E	0° 29' 54.22" U	2.26	2.26	18.52	No	02 January 2022
326	Firdiansyah	Ds. Boncah Kesuma, Kec. Kabun, Kab. Rokan Hulu, Riau	100° 43' 6.14" E	0° 29' 54.56" U	1.88	1.88	18.79	No	02 January 2022
327	Suharto	Ds. Boncah Kesuma, Kec. Kabun, Kab. Rokan Hulu, Riau	100° 43' 4.18" E	0° 29' 54.61" U	1.73	1.73	14.36	No	02 January 2022
328	Nur cholis	Ds. Boncah Kesuma, Kec. Kabun, Kab. Rokan Hulu, Riau	100° 43' 12.73" E	0° 29' 54.08" U	2.08	2.08	25.97	No	02 January 2022
329	Muhamad zaenal arifin	Ds. Boncah Kesuma, Kec. Kabun, Kab. Rokan Hulu, Riau	100° 43' 14.78" E	0° 29' 54.16" U	2.13	2.13	24.28	No	02 January 2022
330	Rustam	Ds. Boncah Kesuma, Kec. Kabun, Kab. Rokan Hulu, Riau	100° 43' 16.96" E	0° 29' 54.13" U	2.31	2.31	3.92	No	02 January 2022
331	Iksan	Ds. Boncah Kesuma, Kec. Kabun, Kab. Rokan Hulu, Riau	100° 43' 21.25" E	0° 29' 54.03" U	2.49	2.49	21.87	No	02 January 2022
332	M.irfan zulfansyah	Ds. Boncah Kesuma, Kec. Kabun, Kab. Rokan Hulu, Riau	100° 43' 56.04" E	0° 29' 55.13" U	2.42	2.42	45.44	No	02 January 2022
333	H Misyono	Ds. Boncah Kesuma, Kec. Kabun, Kab. Rokan Hulu, Riau	100° 43' 53.57" E	0° 29' 54.65" U	1.94	1.94	44.56	No	02 January 2022
334	Nasehudin	Ds. Boncah Kesuma, Kec. Kabun, Kab. Rokan Hulu, Riau	100° 43' 51.41" E	0° 29' 54.65" U	1.94	1.94	39.66	No	02 January 2022
335	Iksan	Ds. Boncah Kesuma, Kec. Kabun, Kab. Rokan Hulu, Riau	100° 43' 49.25" E	0° 29' 54.53" U	2.00	2.00	33.73	No	02 January 2022
336	Sri yati	Ds. Boncah Kesuma, Kec. Kabun, Kab. Rokan Hulu, Riau	100° 43' 47.12" E	0° 29' 54.39" U	2.07	2.07	29.20	No	02 January 2022

337	Drs. Ahmad nuri	Ds. Boncah Kesuma, Kec. Kabun, Kab. Rokan Hulu, Riau	100° 43' 44.96" E	0° 29' 54.62" U	1.98	1.98	20.90	No	02 January 2022
338	Tri may subagya	Ds. Boncah Kesuma, Kec. Kabun, Kab. Rokan Hulu, Riau	100° 43' 42.81" E	0° 29' 54.59" U	2.00	2.00	23.77	No	02 January 2022
339	Rustaman	Ds. Boncah Kesuma, Kec. Kabun, Kab. Rokan Hulu, Riau	100° 43' 40.62" E	0° 29' 54.16" U	2.17	2.17	23.18	No	02 January 2022
340	Sudiarto	Ds. Boncah Kesuma, Kec. Kabun, Kab. Rokan Hulu, Riau	100° 43' 38.53" E	0° 29' 54.15" U	2.19	2.19	36.26	No	02 January 2022
341	Solihat	Ds. Boncah Kesuma, Kec. Kabun, Kab. Rokan Hulu, Riau	100° 43' 36.37" E	0° 29' 54.38" U	2.06	2.06	36.96	No	02 January 2022
342	Tarmad	Ds. Boncah Kesuma, Kec. Kabun, Kab. Rokan Hulu, Riau	100° 43' 34.23" E	0° 29' 54.39" U	2.11	2.11	32.43	No	02 January 2022
343	Ismail	Ds. Boncah Kesuma, Kec. Kabun, Kab. Rokan Hulu, Riau	100° 43' 32.08" E	0° 29' 54.47" U	2.09	2.09	24.60	No	02 January 2022
344	Hamdani	Ds. Boncah Kesuma, Kec. Kabun, Kab. Rokan Hulu, Riau	100° 43' 29.9" E	0° 29' 54.39" U	2.16	2.16	6.45	No	02 January 2022
345	Abidin	Ds. Boncah Kesuma, Kec. Kabun, Kab. Rokan Hulu, Riau	100° 43' 27.71" E	0° 29' 54.41" U	2.14	2.14	28.12	No	02 January 2022
346	Muhaimin	Ds. Boncah Kesuma, Kec. Kabun, Kab. Rokan Hulu, Riau	100° 43' 25.59" E	0° 29' 54.5" U	2.03	2.03	23.08	No	02 January 2022
347	Slamet	Ds. Boncah Kesuma, Kec. Kabun, Kab. Rokan Hulu, Riau	100° 43' 23.48" E	0° 29' 54.17" U	2.23	2.23	29.26	No	02 January 2022
348	Suwarno	Ds. Boncah Kesuma, Kec. Kabun, Kab. Rokan Hulu, Riau	100° 43' 13.43" E	0° 30' 2.71" U	2.20	2.20	27.37	No	02 January 2022
349	Suroto	Ds. Boncah Kesuma, Kec. Kabun, Kab. Rokan Hulu, Riau	100° 43' 16.65" E	0° 30' 2.76" U	1.73	1.73	22.66	No	02 January 2022
350	Marinah	Ds. Boncah Kesuma, Kec. Kabun, Kab. Rokan Hulu, Riau	100° 43' 19.58" E	0° 30' 2.78" U	1.82	1.82	30.44	No	02 January 2022
351	Kanipah	Ds. Boncah Kesuma, Kec. Kabun, Kab. Rokan Hulu, Riau	100° 43' 22.8" E	0° 30' 2.78" U	2.05	2.05	34.93	No	02 January 2022
352	Ari	Ds. Boncah Kesuma, Kec. Kabun, Kab. Rokan Hulu, Riau	100° 43' 29.36" E	0° 30' 2.76" U	1.95	1.95	40.11	No	02 January 2022
353	Sipahutar	Ds. Boncah Kesuma, Kec. Kabun, Kab. Rokan Hulu, Riau	100° 43' 32.59" E	0° 30' 2.74" U	1.95	1.95	37.88	No	02 January 2022
354	Hj.Suwarni	Ds. Boncah Kesuma, Kec. Kabun, Kab. Rokan Hulu, Riau	100° 43' 35.8" E	0° 30' 2.72" U	1.94	1.94	38.85	No	02 January 2022
355	H Nur Hasan Basori	Ds. Boncah Kesuma, Kec. Kabun, Kab. Rokan Hulu, Riau	100° 43' 39.04" E	0° 30' 2.71" U	1.99	1.99	24.74	No	02 January 2022
356	Sugiarto	Ds. Boncah Kesuma, Kec. Kabun, Kab. Rokan Hulu, Riau	100° 43' 42.28" E	0° 30' 2.69" U	1.95	1.95	35.31	No	02 January 2022
357	Saifudin	Ds. Boncah Kesuma, Kec. Kabun, Kab. Rokan Hulu, Riau	100° 43' 45.48" E	0° 30' 2.68" U	1.97	1.97	33.81	No	02 January 2022
358	Setiono	Ds. Boncah Kesuma, Kec. Kabun, Kab. Rokan Hulu, Riau	100° 43' 48.74" E	0° 30' 2.66" U	2.03	2.03	38.76	No	02 January 2022
359	Khairum	Ds. Boncah Kesuma, Kec. Kabun, Kab. Rokan Hulu, Riau	100° 43' 51.97" E	0° 30' 2.64" U	1.94	1.94	29.57	No	02 January 2022
360	Drs. Ahmad nuri	Ds. Boncah Kesuma, Kec. Kabun, Kab. Rokan Hulu, Riau	100° 43' 55.18" E	0° 30' 2.63" U	2.02	2.02	22.85	No	02 January 2022
361	Durajat	Ds. Boncah Kesuma, Kec. Kabun, Kab. Rokan Hulu, Riau	100° 43' 59.58" E	0° 30' 3.57" U	2.58	2.58	27.68	No	02 January 2022
362	Solatin	Ds. Boncah Kesuma, Kec. Kabun, Kab. Rokan Hulu, Riau	100° 44' 5.83" E	0° 30' 4.75" U	2.24	2.24	36.57	No	02 January 2022
363	Ismail	Ds. Boncah Kesuma, Kec. Kabun, Kab. Rokan Hulu, Riau	100° 44' 5.66" E	0° 30' 9.95" U	2.41	2.41	28.78	No	02 January 2022
364	SUHAR	Ds. Boncah Kesuma, Kec. Kabun, Kab. Rokan Hulu, Riau	100° 44' 1.65" E	0° 30' 9.16" U	2.03	2.03	76.41	No	02 January 2022
365	M.irfan zulfansyah	Ds. Boncah Kesuma, Kec. Kabun, Kab. Rokan Hulu, Riau	100° 43' 58.4" E	0° 30' 9.16" U	2.03	2.03	33.38	No	02 January 2022
366	Sera dwi mahmudah	Ds. Boncah Kesuma, Kec. Kabun, Kab. Rokan Hulu, Riau	100° 43' 55.15" E	0° 30' 9.14" U	2.02	2.02	35.25	No	02 January 2022
367	Usnan	Ds. Boncah Kesuma, Kec. Kabun, Kab. Rokan Hulu, Riau	100° 43' 51.97" E	0° 30' 9.13" U	1.92	1.92	29.05	No	02 January 2022

368	Sa'dullah	Ds. Boncah Kesuma, Kec. Kabun, Kab. Rokan Hulu, Riau	100° 43' 48.76" E	0° 30' 9.13" U	2.04	2.04	22.86	No	02 January 2022
369	Nanang Qosim	Ds. Boncah Kesuma, Kec. Kabun, Kab. Rokan Hulu, Riau	100° 43' 45.48" E	0° 30' 9.13" U	1.99	1.99	26.62	No	02 January 2022
370	Hendra saputra	Ds. Boncah Kesuma, Kec. Kabun, Kab. Rokan Hulu, Riau	100° 43' 42.25" E	0° 30' 9.13" U	1.96	1.96	32.34	No	02 January 2022
371	H Nur Hasan Basori	Ds. Boncah Kesuma, Kec. Kabun, Kab. Rokan Hulu, Riau	100° 43' 39" E	0° 30' 9.14" U	2.03	2.03	15.76	No	02 January 2022
372	Amirudin Nasution	Ds. Boncah Kesuma, Kec. Kabun, Kab. Rokan Hulu, Riau	100° 43' 35.76" E	0° 30' 9.15" U	1.96	1.96	26.26	No	02 January 2022
373	Dodik agung purwanto	Ds. Boncah Kesuma, Kec. Kabun, Kab. Rokan Hulu, Riau	100° 43' 29.32" E	0° 30' 9.17" U	2.00	2.00	32.65	No	02 January 2022
374	Wiwit sutriono	Ds. Boncah Kesuma, Kec. Kabun, Kab. Rokan Hulu, Riau	100° 43' 26.08" E	0° 30' 9.18" U	1.99	1.99	38.77	No	02 January 2022
375	Taufiqur rokhman	Ds. Boncah Kesuma, Kec. Kabun, Kab. Rokan Hulu, Riau	100° 43' 22.78" E	0° 30' 9.19" U	2.10	2.10	36.65	No	02 January 2022
376	M.efendi	Ds. Boncah Kesuma, Kec. Kabun, Kab. Rokan Hulu, Riau	100° 43' 19.56" E	0° 30' 9.22" U	1.89	1.89	37.11	No	02 January 2022
377	Sadi	Ds. Boncah Kesuma, Kec. Kabun, Kab. Rokan Hulu, Riau	100° 43' 16.57" E	0° 30' 9.25" U	1.84	1.84	26.40	No	02 January 2022
378	Muhammad	Ds. Boncah Kesuma, Kec. Kabun, Kab. Rokan Hulu, Riau	100° 43' 13.35" E	0° 30' 9.23" U	2.18	2.18	33.63	No	02 January 2022
379	Siswanto A	Ds. Boncah Kesuma, Kec. Kabun, Kab. Rokan Hulu, Riau	100° 43' 13.28" E	0° 30' 15.85" U	2.18	2.18	41.78	No	02 January 2022
380	Ahmad fadoli	Ds. Boncah Kesuma, Kec. Kabun, Kab. Rokan Hulu, Riau	100° 43' 16.48" E	0° 30' 15.83" U	1.87	1.87	38.42	No	02 January 2022
381	Wahyu suhendra	Ds. Boncah Kesuma, Kec. Kabun, Kab. Rokan Hulu, Riau	100° 43' 19.52" E	0° 30' 15.88" U	1.98	1.98	33.76	No	02 January 2022
382	Solikin	Ds. Boncah Kesuma, Kec. Kabun, Kab. Rokan Hulu, Riau	100° 43' 22.76" E	0° 30' 15.83" U	2.16	2.16	37.36	No	02 January 2022
383	Nasuri	Ds. Boncah Kesuma, Kec. Kabun, Kab. Rokan Hulu, Riau	100° 43' 26.06" E	0° 30' 15.83" U	2.08	2.08	31.92	No	02 January 2022
384	Bunawi	Ds. Boncah Kesuma, Kec. Kabun, Kab. Rokan Hulu, Riau	100° 43' 29.29" E	0° 30' 15.83" U	2.10	2.10	33.68	No	02 January 2022
385	Yon Afrizal	Ds. Boncah Kesuma, Kec. Kabun, Kab. Rokan Hulu, Riau	100° 43' 32.53" E	0° 30' 15.84" U	2.11	2.11	31.16	No	02 January 2022
386	Fitri Mawarni	Ds. Boncah Kesuma, Kec. Kabun, Kab. Rokan Hulu, Riau	100° 43' 35.74" E	0° 30' 15.85" U	2.10	2.10	32.24	No	02 January 2022
387	Usman	Ds. Boncah Kesuma, Kec. Kabun, Kab. Rokan Hulu, Riau	100° 43' 38.99" E	0° 30' 15.82" U	2.17	2.17	35.35	No	02 January 2022
388	Suliyadi	Ds. Boncah Kesuma, Kec. Kabun, Kab. Rokan Hulu, Riau	100° 43' 42.24" E	0° 30' 15.84" U	2.12	2.12	27.35	No	02 January 2022
389	Kalimah	Ds. Boncah Kesuma, Kec. Kabun, Kab. Rokan Hulu, Riau	100° 43' 45.47" E	0° 30' 15.84" U	2.16	2.16	28.24	No	02 January 2022
390	Heri kusdianto	Ds. Boncah Kesuma, Kec. Kabun, Kab. Rokan Hulu, Riau	100° 43' 51.96" E	0° 30' 15.91" U	2.10	2.10	37.70	No	02 January 2022
391	Tata sanjaya	Ds. Boncah Kesuma, Kec. Kabun, Kab. Rokan Hulu, Riau	100° 43' 55.16" E	0° 30' 15.9" U	2.14	2.14	35.79	No	02 January 2022
392	Parmin	Ds. Boncah Kesuma, Kec. Kabun, Kab. Rokan Hulu, Riau	100° 43' 58.4" E	0° 30' 15.92" U	2.14	2.14	29.96	No	02 January 2022
393	Sudarto	Ds. Boncah Kesuma, Kec. Kabun, Kab. Rokan Hulu, Riau	100° 44' 1.63" E	0° 30' 15.94" U	2.14	2.14	34.18	No	02 January 2022
394	Kiswanto	Ds. Boncah Kesuma, Kec. Kabun, Kab. Rokan Hulu, Riau	100° 44' 4.86" E	0° 30' 15.97" U	2.13	2.13	36.66	No	02 January 2022
395	Syahrudin Tanjung	Ds. Boncah Kesuma, Kec. Kabun, Kab. Rokan Hulu, Riau	100° 44' 8.01" E	0° 30' 16.11" U	2.01	2.01	22.66	No	02 January 2022
396	Edi lukito	Ds. Boncah Kesuma, Kec. Kabun, Kab. Rokan Hulu, Riau	100° 44' 7.94" E	0° 30' 22.53" U	1.71	1.71	33.63	No	02 January 2022
397	Siana	Ds. Boncah Kesuma, Kec. Kabun, Kab. Rokan Hulu, Riau	100° 44' 4.85" E	0° 30' 22.47" U	1.85	1.85	18.99	No	02 January 2022
398	Sumarno	Ds. Boncah Kesuma, Kec. Kabun, Kab. Rokan Hulu, Riau	100° 44' 1.63" E	0° 30' 22.46" U	1.87	1.87	34.00	No	02 January 2022

399	Kawi	Ds. Boncah Kesuma, Kec. Kabun, Kab. Rokan Hulu, Riau	100° 43' 58.4" E	0° 30' 22.44" U	1.86	1.86	38.23	No	02 January 2022
400	Slamet	Ds. Boncah Kesuma, Kec. Kabun, Kab. Rokan Hulu, Riau	100° 43' 55.16" E	0° 30' 22.42" U	1.86	1.86	33.17	No	02 January 2022
401	Rifa'i	Ds. Boncah Kesuma, Kec. Kabun, Kab. Rokan Hulu, Riau	100° 43' 51.93" E	0° 30' 22.4" U	1.86	1.86	24.33	No	02 January 2022
402	Nasehudin	Ds. Boncah Kesuma, Kec. Kabun, Kab. Rokan Hulu, Riau	100° 43' 48.7" E	0° 30' 22.38" U	1.85	1.85	32.21	No	02 January 2022
403	Depot hutapea	Ds. Boncah Kesuma, Kec. Kabun, Kab. Rokan Hulu, Riau	100° 43' 45.46" E	0° 30' 22.36" U	1.86	1.86	30.74	No	02 January 2022
404	Herryanto	Ds. Boncah Kesuma, Kec. Kabun, Kab. Rokan Hulu, Riau	100° 43' 42.23" E	0° 30' 22.34" U	1.86	1.86	35.00	No	02 January 2022
405	Erizal M.arsyad	Ds. Boncah Kesuma, Kec. Kabun, Kab. Rokan Hulu, Riau	100° 43' 38.99" E	0° 30' 22.32" U	1.86	1.86	30.14	No	02 January 2022
406	Royan aryanto	Ds. Boncah Kesuma, Kec. Kabun, Kab. Rokan Hulu, Riau	100° 43' 35.75" E	0° 30' 22.3" U	1.85	1.85	42.78	No	02 January 2022
407	Fadil Al sahap	Ds. Boncah Kesuma, Kec. Kabun, Kab. Rokan Hulu, Riau	100° 43' 32.52" E	0° 30' 22.27" U	1.85	1.85	32.95	No	02 January 2022
408	Irwan	Ds. Boncah Kesuma, Kec. Kabun, Kab. Rokan Hulu, Riau	100° 43' 29.29" E	0° 30' 22.25" U	1.85	1.85	28.52	No	02 January 2022
409	Basrani	Ds. Boncah Kesuma, Kec. Kabun, Kab. Rokan Hulu, Riau	100° 43' 26.05" E	0° 30' 22.23" U	1.84	1.84	37.80	No	02 January 2022
410	Endang suzana	Ds. Boncah Kesuma, Kec. Kabun, Kab. Rokan Hulu, Riau	100° 43' 22.77" E	0° 30' 22.22" U	1.90	1.90	30.44	No	02 January 2022
411	mhd al fajri	Ds. Boncah Kesuma, Kec. Kabun, Kab. Rokan Hulu, Riau	100° 43' 19.47" E	0° 30' 22.43" U	2.00	2.00	26.70	No	02 January 2022
412	Sumanto	Ds. Boncah Kesuma, Kec. Kabun, Kab. Rokan Hulu, Riau	100° 43' 16.4" E	0° 30' 22.36" U	1.73	1.73	31.80	No	02 January 2022
413	Solikin	Ds. Boncah Kesuma, Kec. Kabun, Kab. Rokan Hulu, Riau	100° 43' 13.24" E	0° 30' 22.34" U	2.09	2.09	27.20	No	02 January 2022
414	Mariyono	Ds. Boncah Kesuma, Kec. Kabun, Kab. Rokan Hulu, Riau	100° 43' 13.2" E	0° 30' 28.76" U	2.13	2.13	31.09	No	02 January 2022
415	Rakup	Ds. Boncah Kesuma, Kec. Kabun, Kab. Rokan Hulu, Riau	100° 43' 16.35" E	0° 30' 28.82" U	1.74	1.74	35.82	No	02 January 2022
416	saiin musa	Ds. Boncah Kesuma, Kec. Kabun, Kab. Rokan Hulu, Riau	100° 43' 22.76" E	0° 30' 28.66" U	2.17	2.17	31.15	No	02 January 2022
417	Fatulloh	Ds. Boncah Kesuma, Kec. Kabun, Kab. Rokan Hulu, Riau	100° 43' 26.04" E	0° 30' 28.66" U	2.12	2.12	20.66	No	02 January 2022
418	Supardi	Ds. Boncah Kesuma, Kec. Kabun, Kab. Rokan Hulu, Riau	100° 43' 29.28" E	0° 30' 28.67" U	2.10	2.10	41.42	No	02 January 2022
419	Ahmad hamdani	Ds. Boncah Kesuma, Kec. Kabun, Kab. Rokan Hulu, Riau	100° 43' 32.52" E	0° 30' 28.68" U	2.09	2.09	37.23	No	02 January 2022
420	Nur kholiq	Ds. Boncah Kesuma, Kec. Kabun, Kab. Rokan Hulu, Riau	100° 43' 35.75" E	0° 30' 28.7" U	2.08	2.08	42.20	No	02 January 2022
421	sudiaman s	Ds. Boncah Kesuma, Kec. Kabun, Kab. Rokan Hulu, Riau	100° 43' 38.99" E	0° 30' 28.71" U	2.07	2.07	38.25	No	02 January 2022
422	Ismail	Ds. Boncah Kesuma, Kec. Kabun, Kab. Rokan Hulu, Riau	100° 43' 42.24" E	0° 30' 28.73" U	2.09	2.09	36.08	No	02 January 2022
423	Nazaruddin	Ds. Boncah Kesuma, Kec. Kabun, Kab. Rokan Hulu, Riau	100° 43' 45.48" E	0° 30' 28.72" U	2.03	2.03	27.98	No	02 January 2022
424	Darso	Ds. Boncah Kesuma, Kec. Kabun, Kab. Rokan Hulu, Riau	100° 43' 48.69" E	0° 30' 28.74" U	2.05	2.05	42.24	No	02 January 2022
425	Paino	Ds. Boncah Kesuma, Kec. Kabun, Kab. Rokan Hulu, Riau	100° 43' 51.92" E	0° 30' 28.75" U	2.04	2.04	30.52	No	02 January 2022
426	Joni Putra	Ds. Boncah Kesuma, Kec. Kabun, Kab. Rokan Hulu, Riau	100° 43' 55.16" E	0° 30' 28.77" U	2.04	2.04	38.23	No	02 January 2022
427	Arlen	Ds. Boncah Kesuma, Kec. Kabun, Kab. Rokan Hulu, Riau	100° 43' 58.39" E	0° 30' 28.78" U	2.03	2.03	34.37	No	02 January 2022
428	Paino	Ds. Boncah Kesuma, Kec. Kabun, Kab. Rokan Hulu, Riau	100° 44' 1.63" E	0° 30' 28.78" U	2.02	2.02	37.24	No	02 January 2022
429	Ahmad Fauzan	Ds. Boncah Kesuma, Kec. Kabun, Kab. Rokan Hulu, Riau	100° 44' 4.82" E	0° 30' 27.1" U	2.01	2.01	15.44	No	02 January 2022

430	Sarman	Ds. Boncah Kesuma, Kec. Kabun, Kab. Rokan Hulu, Riau	100° 44' 3.98" E	0° 30' 32.2" U	3.50	3.50	27.59	No	02 January 2022
431	Sukisno	Ds. Boncah Kesuma, Kec. Kabun, Kab. Rokan Hulu, Riau	100° 43' 58.38" E	0° 30' 35.24" U	1.94	1.94	35.43	No	02 January 2022
432	Rudi	Ds. Boncah Kesuma, Kec. Kabun, Kab. Rokan Hulu, Riau	100° 43' 55.16" E	0° 30' 35.27" U	1.96	1.96	3.59	No	02 January 2022
433	Tariman	Ds. Boncah Kesuma, Kec. Kabun, Kab. Rokan Hulu, Riau	100° 43' 51.92" E	0° 30' 35.27" U	1.96	1.96	32.50	No	02 January 2022
434	Yateni	Ds. Boncah Kesuma, Kec. Kabun, Kab. Rokan Hulu, Riau	100° 43' 48.69" E	0° 30' 35.27" U	1.96	1.96	42.75	No	02 January 2022
435	Suwito	Ds. Boncah Kesuma, Kec. Kabun, Kab. Rokan Hulu, Riau	100° 43' 45.51" E	0° 30' 35.25" U	1.90	1.90	37.87	No	02 January 2022
436	Darmo	Ds. Boncah Kesuma, Kec. Kabun, Kab. Rokan Hulu, Riau	100° 43' 42.28" E	0° 30' 35.26" U	2.00	2.00	40.19	No	02 January 2022
437	M.sahlan	Ds. Boncah Kesuma, Kec. Kabun, Kab. Rokan Hulu, Riau	100° 43' 39" E	0° 30' 35.26" U	1.96	1.96	37.09	No	02 January 2022
438	Muhammad Ropa'i	Ds. Boncah Kesuma, Kec. Kabun, Kab. Rokan Hulu, Riau	100° 43' 35.76" E	0° 30' 35.26" U	1.95	1.95	38.88	No	02 January 2022
439	Edi saputra	Ds. Boncah Kesuma, Kec. Kabun, Kab. Rokan Hulu, Riau	100° 43' 32.52" E	0° 30' 35.25" U	1.95	1.95	36.25	No	02 January 2022
440	Hj.Wahini	Ds. Boncah Kesuma, Kec. Kabun, Kab. Rokan Hulu, Riau	100° 43' 29.28" E	0° 30' 35.25" U	1.95	1.95	37.38	No	02 January 2022
441	Hj.Wahini	Ds. Boncah Kesuma, Kec. Kabun, Kab. Rokan Hulu, Riau	100° 43' 26.03" E	0° 30' 35.24" U	1.96	1.96	36.26	No	02 January 2022
442	Rudianto	Ds. Boncah Kesuma, Kec. Kabun, Kab. Rokan Hulu, Riau	100° 43' 22.71" E	0° 30' 35.25" U	2.03	2.03	30.57	No	02 January 2022
443	Riswan H	Ds. Boncah Kesuma, Kec. Kabun, Kab. Rokan Hulu, Riau	100° 43' 19.42" E	0° 30' 35.31" U	1.98	1.98	4.58	No	02 January 2022
444	Susilo	Ds. Boncah Kesuma, Kec. Kabun, Kab. Rokan Hulu, Riau	100° 43' 16.36" E	0° 30' 35.34" U	1.82	1.82	33.11	No	02 January 2022
445	Sukadi	Ds. Boncah Kesuma, Kec. Kabun, Kab. Rokan Hulu, Riau	100° 43' 13.18" E	0° 30' 35.29" U	2.15	2.15	6.64	No	02 January 2022
446	Supardi	Ds. Boncah Kesuma, Kec. Kabun, Kab. Rokan Hulu, Riau	100° 43' 13.15" E	0° 30' 41.81" U	2.10	2.10	27.23	No	02 January 2022
447	Achmad riyanto	Ds. Boncah Kesuma, Kec. Kabun, Kab. Rokan Hulu, Riau	100° 43' 16.38" E	0° 30' 41.84" U	1.86	1.86	27.62	No	02 January 2022
448	Doto	Ds. Boncah Kesuma, Kec. Kabun, Kab. Rokan Hulu, Riau	100° 43' 19.42" E	0° 30' 41.83" U	1.90	1.90	15.62	No	02 January 2022
449	Sukisno	Ds. Boncah Kesuma, Kec. Kabun, Kab. Rokan Hulu, Riau	100° 43' 22.67" E	0° 30' 41.79" U	2.19	2.19	28.53	No	02 January 2022
450	Rasemi	Ds. Boncah Kesuma, Kec. Kabun, Kab. Rokan Hulu, Riau	100° 43' 26" E	0° 30' 41.81" U	2.10	2.10	26.91	No	02 January 2022
451	Ponijo	Ds. Boncah Kesuma, Kec. Kabun, Kab. Rokan Hulu, Riau	100° 43' 29.27" E	0° 30' 41.88" U	2.16	2.16	31.78	No	02 January 2022
452	Ribut Bangun Purba	Ds. Boncah Kesuma, Kec. Kabun, Kab. Rokan Hulu, Riau	100° 43' 32.5" E	0° 30' 41.91" U	2.14	2.14	26.80	No	02 January 2022
453	Sukri	Ds. Boncah Kesuma, Kec. Kabun, Kab. Rokan Hulu, Riau	100° 43' 36.31" E	0° 30' 40.95" U	2.10	2.10	24.49	No	02 January 2022
454	Wiwit sutriono	Ds. Boncah Kesuma, Kec. Kabun, Kab. Rokan Hulu, Riau	100° 43' 40.72" E	0° 30' 40.93" U	2.09	2.09	30.43	No	02 January 2022
455	Kasdi	Ds. Boncah Kesuma, Kec. Kabun, Kab. Rokan Hulu, Riau	100° 43' 45.08" E	0° 30' 40.95" U	2.05	2.05	41.16	No	02 January 2022
456	Edi Lukito	Ds. Boncah Kesuma, Kec. Kabun, Kab. Rokan Hulu, Riau	100° 43' 49.42" E	0° 30' 40.95" U	2.07	2.07	45.25	No	02 January 2022
457	Rudianto	Ds. Boncah Kesuma, Kec. Kabun, Kab. Rokan Hulu, Riau	100° 43' 54.2" E	0° 30' 40.48" U	2.23	2.23	22.25	No	02 January 2022
Total					917.38	917.38	12802.82		

Note : *) Periode dari Januari – Desember 2022

PT TUV Rheinland Indonesia adalah anggota kelompok TÜV Rheinland, sebuah pemimpin secara global dalam jasa penilaian dan pengujian independen. Berada sejak Tahun 1872, Kelompok TÜV Rheinland telah 130 Tahun berpengalaman dalam menyediakan beragam jasa sertifikasi termasuk jasa teknik di 360 lokasi pada 62 negara di dunia.

Tim Audit terdiri dari :

Tim Audit	Peran/Bidang yang dibutuhkan	Kualifikasi dan Pengalaman
Ade Sudiana	Ketua Tim Audit - Best Agricultural Practices, Environment, OHS, HCV, SCCS and Legal	<ul style="list-style-type: none"> • Dia telah mengikuti beberapa pelatihan seperti Lead Auditor course - Neville Clark; ISO 9001:2015 (2016), Awareness training of ISO 9001, 14001 and 18001, inhouse training of ISO 19011 and ISPO, Training of Assesor for Sustainability Natural Forest Management (SFM) by The Indonesian Ecolabelling Institute (2008), Training of Auditor for Sustainability Forest Management By Center for Educational and Training of Forestry, Department of Forestry (2010), Examination of competency for auditor of Sustainability Forest Management by Personal Certification Body-Rhino (2014), Training of Auditor For ISPO (2016) by ISPO Commission, Training of Lead Auditor for RSPO (2016) by Pro Forest and Daemeter, Training of Lead Auditor for SCCS (2017) by David Ogg (Refresh training in 2020 by David Ogg). • Dia memiliki pengalaman kerja seperti Consultant and Trainer of : Quality Management System (ISO 9001), Environment Management System (ISO 14001), Safety Management System (SMK3/ OHSAS 18001), ISPO (Indonesian Sustainable Palm Oil), Consultant and trainer in PT FOCUS (2008-2016) ; Auditor of SFM in PT Forestcitra Sejahtera (2008-2016); Auditor of SFM, RSPO and ISPO in PT TUV Rheinland Indonesia (2016-now)
Mohamad Amarullah	Auditor – Best Agricultural Practices, Social	<ul style="list-style-type: none"> • Dia telah mengikuti training seperti, ISPO Lead auditor, RSPO Lead Auditor, RSPO Supply Chain Lead Auditor, ISO 17021, ISO 17065, HCV, ISO 9001, ISO 19011, ISO 14001 and SA-8000 • Dia memiliki pengalaman kerja seperti, RSPO, ISPO Auditor at PT TUV Rheinland Indonesia, LA for RSPO, ISPO and MSPO Scheme at PT Mutu Agung Lestari, Agronomist and Research Assistant at PT Applied Agricultural Resources Indonesia, business development manager at One point Health Laboratory Sdn. Bhd. And Research Assistant Universiti Putera Malaysia
Budi Setiawan	Auditor – Environment,	<ul style="list-style-type: none"> • Dia telah mengikuti training seperti Indonesian

Tim Audit	Peran/Bidang yang dibutuhkan	Kualifikasi dan Pengalaman
	GHG and Legal	Sustainable Palm Oil (ISPO) Lead Auditor Course by ISPO Commision; Quality Management System (QMS) Auditor/Lead Auditor by IRCA (ISO 9001:2008); Environmental Management Systems Auditor/Lead Auditor Conversion Training by IRCA (ISO 14001:2004); Calculation of Green House Gas at Palm Oil Plantation by ISPO Commision; SVLK Auditor Training by Ministry of Forestry; CoC Auditor by LEI; PUB and Café training by ministry of tourism; HCV Training; RSPO P&C and SCCS Training; AWS Training; CORSIA <ul style="list-style-type: none"> • Dia memiliki pengalaman kerja seperti Staff RSPO in PT MAS, Staff Planning & Analysis in PT Bakti Sukses Mandiri; PT Mutu Hijau Indonesia, Jakarta as Technical Manag-er (2015-2016) and HR and finance manager (2014-2015); Auditor in PT Mutu Hijau Indonesia (2010-2016), and Auditor in PT TUV Rheinland Indonesia (2016-present).
Wahyu	Auditor – Legal, Environment & OHS	<ul style="list-style-type: none"> • Dia telah mengikuti beberapa pelatihan seperti RSPO Lead Auditor Course, Pro-Forest & Daemeter, Calculation of Green House Gas at Palm Oil Plantation, Komisi ISPO, ISPO Lead Auditor Course, Komisi ISPO, Verified Legal Compliance & Reduced Impact Logging Auditor Training, by Tropical Forest Foundation, SVLK Auditor Training, Ministry of Forestry, CoC Auditor – LEI, ISO 9001:2008, IRCA Approved Course, ISO 14001:2004, IRCA Approved Course • Dia memiliki pengalaman kerja seperti PT Carsurin, as QHSE Coordinator (2006 -2009), PT Mutu Hijau Indonesia, Jakarta as Technical Manager (2010-May 2014) and Auditor PT TUV Rhein-land Indonesia (May 2014-present)

PT TUV Rheinland Indonesia mengundang pemangku kepentingan untuk memberikan komentar/pendapat (jika ada) mengenai hal-hal berikut yang berkaitan dengan lokasi yang akan di audit. Komentar/pendapat hanya akan diterima jika disampaikan dalam waktu 30 hari sejak tanggal surat ini dan akan menjadi bahan pertimbangan dalam audit.

Untuk komentar/pendapat yang diminta untuk dijaga kerahasiaannya atau dibuat dalam bentuk anonym, tambahkan kata "RAHASIA" dalam tajuk balasan Anda.

Pemberi komentar/pendapat perlu memasukan informasi rinci berikut ini agar yang bersangkutan dapat dihubungi jika klarifikasi lebih lanjut mengenai persoalan yang disampaikan perlu dilakukan.

Nama : **Ade Sudiana**
Jabatan : **Lead Auditor**
Alamat Email : **ade.sudiana@tuv.com**
Nomor Telepon : **021 – 579 44 579**

Pendapat/komentar harus dikirim ke :

Certification Body :
PT TUV Rheinland Indonesia
Ade Sudiana
Lead Auditor
Menara Karya 10th Floor
Jl. H.R. Rasuna Said Block X-5 Kav 1-2
Jakarta 12950
Tel : +62 21 – 579 44 579
Fax : +62 21 – 579 44 575
Email : ade.sudiana@tuv.com
Website: www.tuv.com

Auditee :
Koperasi Unit Desa Bangkit Usaha Makmur
Khoirum
Head of KUD BUM
Desa Boncah Kesuma, Kec. Kabun
Kab. Rokan Hulu, Riau
Tel : +62 813-7112-8507
Fax : -
Email : kudbum0922@gmail.com

Yours faithfully,



Dian S Soeminta
General Manager of Sustainability Assurance
PT TUV Rheinland Indonesia