

13th February 2023

Public Notification :

RSPO Initial Certification Audit (MS-B) of Koperasi Unit Desa Bangkit Usaha Makmur (RSPO Membership : 1-0427-22-000-00)

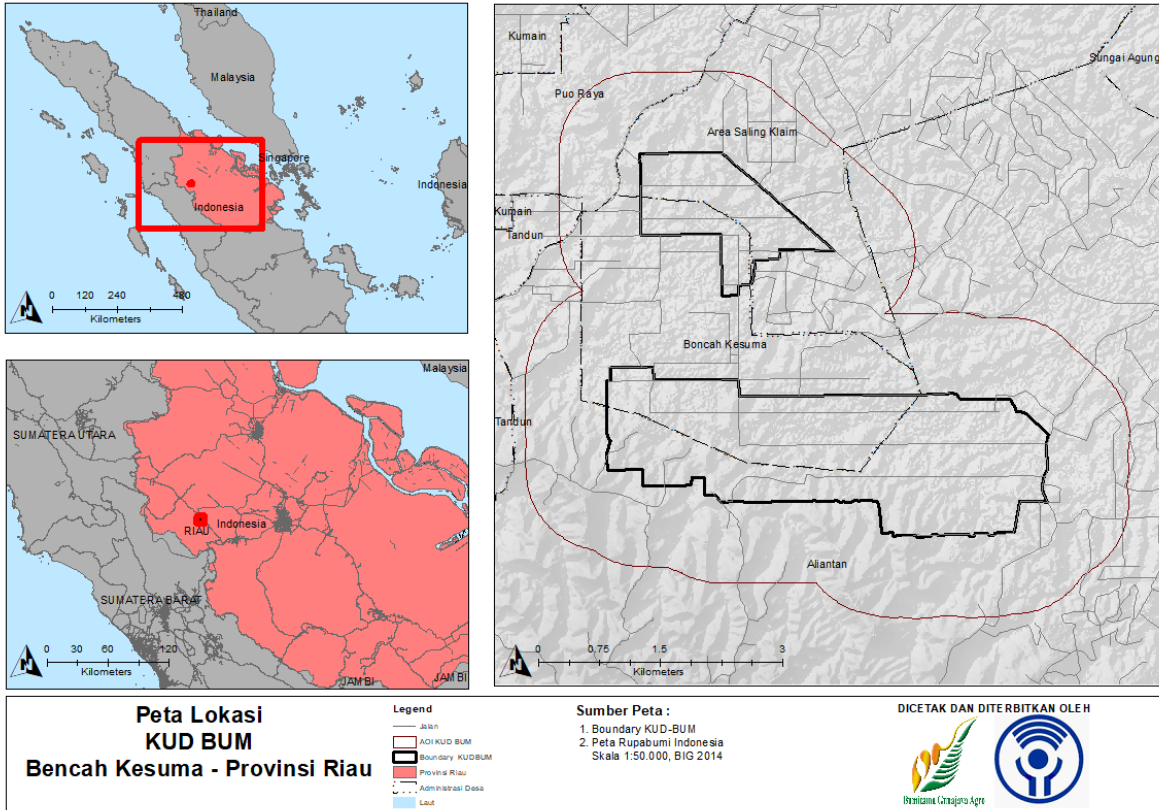
Dear Stakeholders,

This is to inform that the above ISH Group with RSPO membership number **1-0427-22-000-00** had appointed CB PT TUV Rheinland Indonesia to conduct the Initial Certification Audit (MS-B) of the group located at Desa Boncah Kesuma, Kabun Sub-District, Rokan Hulu District, Riau Province, Indonesia. The audit will be conducted from May 29th – June 3rd 2023 against the requirements of RSPO Independent Smallholder Standard for the Production of Sustainable Palm Oil Mill 2020- Indonesia National Interpretation 2022.

The RSPO Palmtrace ID Number is **RSPO_PO1000015243**.

Name of Group Manager	Group Manager Address	ISH Group Location		GPS Reference	
				Latitude	Longitude
Khoirum	Desa Boncah Kesuma, RT/RW 006/002, Kecamatan Kabun, Kabupaten Rokan Hulu, Provinsi Riau, Indonesia	Desa Boncah Kesuma, Kecamatan Kabun, Kabupaten Rokan Hulu, Provinsi Riau, Indonesia	Utara	100°41'59.757"E	0°32'22.151"N
			Selatan	100°43'16.042"E	0°29'48.611"N
			Timur	100°44'10.692"E	0°30'28.442"N
			Barat	100°41'14.035"E	0°30'19.535"N

Map Location of the Farmers as below (please attached the map location of the Farmers)



Detail of the farmers background, as below

List Group Members

No.	Name of Farmer	Total size (ha)	Total Area Planted (ha)	Location	GPS Coordinate		Total Production (ton/ year)	Liabilities	Date of Joint
					Langitude	Lotitude			
1	Muhamad samin	1.63	1.63	Ds. Boncah Kesuma, Kec. Kabun, Kab. Rokan Hulu, Riau	100° 41' 34.89" E	0° 32' 29.9" U	5,381.09	No	02 January 2022
2	Suko	1.95	1.95	Ds. Boncah Kesuma, Kec. Kabun, Kab. Rokan Hulu, Riau	100° 41' 29.06" E	0° 32' 18.77" U	40,339.46	No	02 January 2022
3	Mujer	1.91	1.91	Ds. Boncah Kesuma, Kec. Kabun, Kab. Rokan Hulu, Riau	100° 41' 32.26" E	0° 32' 18.72" U	28,778.17	No	02 January 2022
4	Rukiyah	1.94	1.94	Ds. Boncah Kesuma, Kec. Kabun, Kab. Rokan Hulu, Riau	100° 41' 35.47" E	0° 32' 18.76" U	14,225.16	No	02 January 2022
5	Nunung Sumiati	1.96	1.96	Ds. Boncah Kesuma, Kec. Kabun, Kab. Rokan Hulu, Riau	100° 41' 38.71" E	0° 32' 18.8" U	19,320.92	No	02 January 2022
6	Sugiyono	1.97	1.97	Ds. Boncah Kesuma, Kec. Kabun, Kab. Rokan Hulu, Riau	100° 41' 41.94" E	0° 32' 18.84" U	20,579.17	No	02 January 2022
7	Cahono	1.97	1.97	Ds. Boncah Kesuma, Kec. Kabun, Kab. Rokan Hulu, Riau	100° 41' 45.16" E	0° 32' 18.87" U	31,475.42	No	02 January 2022
8	Nariadi	2.02	2.02	Ds. Boncah Kesuma, Kec. Kabun, Kab. Rokan Hulu, Riau	100° 41' 48.42" E	0° 32' 18.88" U	22,536.36	No	02 January 2022
9	Mohammad yusuf	1.97	1.97	Ds. Boncah Kesuma, Kec. Kabun, Kab. Rokan Hulu, Riau	100° 41' 51.66" E	0° 32' 18.88" U	23,776.91	No	02 January 2022
10	Sumardi	2.03	2.03	Ds. Boncah Kesuma, Kec. Kabun, Kab. Rokan Hulu, Riau	100° 41' 54.9" E	0° 32' 18.88" U	35,593.62	No	02 January 2022
11	Hermanto	2.02	2.02	Ds. Boncah Kesuma, Kec. Kabun, Kab. Rokan Hulu, Riau	100° 41' 58.17" E	0° 32' 18.9" U	20,567.99	No	02 January 2022
12	Puji Harto	3.32	3.32	Ds. Boncah Kesuma, Kec. Kabun, Kab. Rokan Hulu, Riau	100° 42' 2.22" E	0° 32' 17.85" U	22,016.38	No	02 January 2022
13	Tamri	1.81	1.81	Ds. Boncah Kesuma, Kec. Kabun, Kab. Rokan Hulu, Riau	100° 42' 7.78" E	0° 32' 12.26" U	32,325.87	No	02 January 2022
14	Suwanti	2.12	2.12	Ds. Boncah Kesuma, Kec. Kabun, Kab. Rokan Hulu, Riau	100° 42' 4.58" E	0° 32' 12.44" U	34,620.85	No	02 January 2022
15	Sugiyono	1.00	1.00	Ds. Boncah Kesuma, Kec. Kabun, Kab. Rokan Hulu, Riau	100° 42' 2.13" E	0° 32' 12.42" U	14,907.20	No	02 January 2022
16	H. Sukirno	0.91	0.91	Ds. Boncah Kesuma, Kec. Kabun, Kab. Rokan Hulu, Riau	100° 42' 0.59" E	0° 32' 12.36" U	11,703.03	No	02 January 2022
17	Kaswito	2.01	2.01	Ds. Boncah Kesuma, Kec. Kabun, Kab. Rokan Hulu, Riau	100° 41' 58.16" E	0° 32' 12.39" U	34,041.72	No	02 January 2022
18	Karyani	2.00	2.00	Ds. Boncah Kesuma, Kec. Kabun, Kab. Rokan Hulu, Riau	100° 41' 54.89" E	0° 32' 12.41" U	33,970.09	No	02 January 2022
19	Soleh	1.97	1.97	Ds. Boncah Kesuma, Kec. Kabun, Kab. Rokan Hulu, Riau	100° 41' 51.66" E	0° 32' 12.4" U	15,763.65	No	02 January 2022
20	Atikah	2.02	2.02	Ds. Boncah Kesuma, Kec. Kabun, Kab. Rokan Hulu, Riau	100° 41' 48.41" E	0° 32' 12.4" U	31,223.21	No	02 January 2022
21	Fatori	2.00	2.00	Ds. Boncah Kesuma, Kec. Kabun, Kab. Rokan Hulu, Riau	100° 41' 45.17" E	0° 32' 12.39" U	10,860.19	No	02 January 2022
22	Suliman	1.99	1.99	Ds. Boncah Kesuma, Kec. Kabun, Kab. Rokan Hulu, Riau	100° 41' 41.94" E	0° 32' 12.39" U	25,389.57	No	02 January 2022
23	Badrun salimi	1.98	1.98	Ds. Boncah Kesuma, Kec. Kabun, Kab. Rokan Hulu, Riau	100° 41' 38.7" E	0° 32' 12.39" U	28,447.92	No	02 January 2022
24	Tukinah	2.00	2.00	Ds. Boncah Kesuma, Kec. Kabun, Kab. Rokan Hulu, Riau	100° 41' 35.47" E	0° 32' 12.34" U	36,460.25	No	02 January 2022
25	Marsito	2.02	2.02	Ds. Boncah Kesuma, Kec. Kabun, Kab. Rokan Hulu, Riau	100° 41' 32.23" E	0° 32' 12.29" U	25,278.16	No	02 January 2022
26	Harun	1.91	1.91	Ds. Boncah Kesuma, Kec. Kabun, Kab. Rokan Hulu, Riau	100° 41' 29.08" E	0° 32' 12.27" U	20,450.43	No	02 January 2022

27	Taufiq pujiyanto	1.88	1.88	Ds. Boncah Kesuma, Kec. Kabun, Kab. Rokan Hulu, Riau	100° 41' 29.1" E	0° 32' 5.72" U	21,799.33	No	02 January 2022
28	Basoni	2.02	2.02	Ds. Boncah Kesuma, Kec. Kabun, Kab. Rokan Hulu, Riau	100° 41' 32.23" E	0° 32' 5.74" U	24,145.80	No	02 January 2022
29	Muhammad Erpan Ayub	2.02	2.02	Ds. Boncah Kesuma, Kec. Kabun, Kab. Rokan Hulu, Riau	100° 41' 35.47" E	0° 32' 5.8" U	27,955.42	No	02 January 2022
30	Muhaimin	2.05	2.05	Ds. Boncah Kesuma, Kec. Kabun, Kab. Rokan Hulu, Riau	100° 41' 38.71" E	0° 32' 5.83" U	18,473.26	No	02 January 2022
31	Sutrisno	0.99	0.99	Ds. Boncah Kesuma, Kec. Kabun, Kab. Rokan Hulu, Riau	100° 41' 42.76" E	0° 32' 5.81" U	2,331.99	No	02 January 2022
32	Miduk Siregar	2.02	2.02	Ds. Boncah Kesuma, Kec. Kabun, Kab. Rokan Hulu, Riau	100° 41' 45.17" E	0° 32' 5.84" U	27,839.85	No	02 January 2022
33	Mahyun	2.03	2.03	Ds. Boncah Kesuma, Kec. Kabun, Kab. Rokan Hulu, Riau	100° 41' 48.41" E	0° 32' 5.88" U	28,114.09	No	02 January 2022
34	Wahyono	1.99	1.99	Ds. Boncah Kesuma, Kec. Kabun, Kab. Rokan Hulu, Riau	100° 41' 51.65" E	0° 32' 5.91" U	29,416.98	No	02 January 2022
35	Aminudin	2.02	2.02	Ds. Boncah Kesuma, Kec. Kabun, Kab. Rokan Hulu, Riau	100° 41' 54.89" E	0° 32' 5.94" U	29,585.80	No	02 January 2022
36	Nur Khoyin	1.99	1.99	Ds. Boncah Kesuma, Kec. Kabun, Kab. Rokan Hulu, Riau	100° 41' 58.14" E	0° 32' 5.91" U	15,285.96	No	02 January 2022
37	H Moh Siswanto A	1.91	1.91	Ds. Boncah Kesuma, Kec. Kabun, Kab. Rokan Hulu, Riau	100° 42' 1.33" E	0° 32' 5.91" U	3,713.25	No	02 January 2022
38	Saliman	2.11	2.11	Ds. Boncah Kesuma, Kec. Kabun, Kab. Rokan Hulu, Riau	100° 42' 4.59" E	0° 32' 5.95" U	23,547.19	No	02 January 2022
39	Ismail	1.94	1.94	Ds. Boncah Kesuma, Kec. Kabun, Kab. Rokan Hulu, Riau	100° 42' 7.86" E	0° 32' 5.93" U	22,104.17	No	02 January 2022
40	Sutikno	1.62	1.62	Ds. Boncah Kesuma, Kec. Kabun, Kab. Rokan Hulu, Riau	100° 42' 14.82" E	0° 32' 7.52" U	38,333.82	No	02 January 2022
41	Sukarso	1.99	1.99	Ds. Boncah Kesuma, Kec. Kabun, Kab. Rokan Hulu, Riau	100° 42' 11.06" E	0° 32' 5.9" U	29,011.09	No	02 January 2022
42	Suratno	2.32	2.32	Ds. Boncah Kesuma, Kec. Kabun, Kab. Rokan Hulu, Riau	100° 42' 16.75" E	0° 32' 4.1" U	4,122.37	No	02 January 2022
43	Sukirno	2.08	2.08	Ds. Boncah Kesuma, Kec. Kabun, Kab. Rokan Hulu, Riau	100° 42' 24.95" E	0° 31' 58.38" U	26,967.52	No	02 January 2022
44	Novi Andriani	2.15	2.15	Ds. Boncah Kesuma, Kec. Kabun, Kab. Rokan Hulu, Riau	100° 42' 20.85" E	0° 31' 59.52" U	245.97	No	02 January 2022
45	Kuswadi	1.94	1.94	Ds. Boncah Kesuma, Kec. Kabun, Kab. Rokan Hulu, Riau	100° 42' 17.5" E	0° 31' 59.48" U	18,357.80	No	02 January 2022
46	Moch.Kiyato	1.97	1.97	Ds. Boncah Kesuma, Kec. Kabun, Kab. Rokan Hulu, Riau	100° 42' 11.05" E	0° 31' 59.48" U	25,335.34	No	02 January 2022
47	Warsito	1.94	1.94	Ds. Boncah Kesuma, Kec. Kabun, Kab. Rokan Hulu, Riau	100° 42' 1.33" E	0° 31' 59.44" U	9,521.58	No	02 January 2022
48	Polman manik	2.01	2.01	Ds. Boncah Kesuma, Kec. Kabun, Kab. Rokan Hulu, Riau	100° 41' 58.13" E	0° 31' 59.43" U	15,283.23	No	02 January 2022
49	Utami Riharti	1.99	1.99	Ds. Boncah Kesuma, Kec. Kabun, Kab. Rokan Hulu, Riau	100° 41' 51.65" E	0° 31' 59.39" U	13,333.33	No	02 January 2022
50	Sumedi	2.00	2.00	Ds. Boncah Kesuma, Kec. Kabun, Kab. Rokan Hulu, Riau	100° 41' 48.42" E	0° 31' 59.37" U	17,539.33	No	02 January 2022
51	Istiqomilah	1.98	1.98	Ds. Boncah Kesuma, Kec. Kabun, Kab. Rokan Hulu, Riau	100° 41' 45.17" E	0° 31' 59.33" U	21,477.33	No	02 January 2022
52	Adminah	1.97	1.97	Ds. Boncah Kesuma, Kec. Kabun, Kab. Rokan Hulu, Riau	100° 41' 41.94" E	0° 31' 59.29" U	19,920.27	No	02 January 2022
53	Towaf	1.98	1.98	Ds. Boncah Kesuma, Kec. Kabun, Kab. Rokan Hulu, Riau	100° 41' 38.7" E	0° 31' 59.28" U	5,947.26	No	02 January 2022
54	Ranto Pawiro	1.99	1.99	Ds. Boncah Kesuma, Kec. Kabun, Kab. Rokan Hulu, Riau	100° 41' 32.23" E	0° 31' 59.25" U	19,971.20	No	02 January 2022
55	Syofyan asmi	1.81	1.81	Ds. Boncah Kesuma, Kec. Kabun, Kab. Rokan Hulu, Riau	100° 41' 29.12" E	0° 31' 59.23" U	22,890.89	No	02 January 2022
56	Sutarno	1.86	1.86	Ds. Boncah Kesuma, Kec. Kabun, Kab. Rokan Hulu, Riau	100° 41' 29.14" E	0° 31' 52.66" U	27,282.88	No	02 January 2022
57	Edi Mukti Suryadi	2.07	2.07	Ds. Boncah Kesuma, Kec. Kabun, Kab. Rokan Hulu, Riau	100° 41' 32.23" E	0° 31' 52.67" U	26,819.82	No	02 January 2022

58	M.Nur hakim	2.06	2.06	Ds. Boncah Kesuma, Kec. Kabun, Kab. Rokan Hulu, Riau	100° 41' 35.47" E	0° 31' 52.69" U	21,650.11	No	02 January 2022
59	Ratiwen	2.06	2.06	Ds. Boncah Kesuma, Kec. Kabun, Kab. Rokan Hulu, Riau	100° 41' 38.71" E	0° 31' 52.71" U	31,117.70	No	02 January 2022
60	Suwanti	2.06	2.06	Ds. Boncah Kesuma, Kec. Kabun, Kab. Rokan Hulu, Riau	100° 41' 41.94" E	0° 31' 52.73" U	26,689.47	No	02 January 2022
61	Teguh	2.07	2.07	Ds. Boncah Kesuma, Kec. Kabun, Kab. Rokan Hulu, Riau	100° 41' 48.41" E	0° 31' 52.77" U	12,763.71	No	02 January 2022
62	Didik Mustofa	2.07	2.07	Ds. Boncah Kesuma, Kec. Kabun, Kab. Rokan Hulu, Riau	100° 41' 51.66" E	0° 31' 52.78" U	2,755.22	No	02 January 2022
63	Rastono	2.07	2.07	Ds. Boncah Kesuma, Kec. Kabun, Kab. Rokan Hulu, Riau	100° 41' 58.12" E	0° 31' 52.82" U	1,883.64	No	02 January 2022
64	Esti Pranowo	2.03	2.03	Ds. Boncah Kesuma, Kec. Kabun, Kab. Rokan Hulu, Riau	100° 42' 1.34" E	0° 31' 52.84" U	2,894.60	No	02 January 2022
65	Narja	2.12	2.12	Ds. Boncah Kesuma, Kec. Kabun, Kab. Rokan Hulu, Riau	100° 42' 4.59" E	0° 31' 52.87" U	14,045.90	No	02 January 2022
66	Maria magdalena p	1.40	1.40	Ds. Boncah Kesuma, Kec. Kabun, Kab. Rokan Hulu, Riau	100° 42' 7.84" E	0° 31' 52.88" U	12,166.64	No	02 January 2022
67	Yuni Rumiati	2.08	2.08	Ds. Boncah Kesuma, Kec. Kabun, Kab. Rokan Hulu, Riau	100° 42' 11.05" E	0° 31' 52.89" U	2,755.22	No	02 January 2022
68	Salbiyah	2.08	2.08	Ds. Boncah Kesuma, Kec. Kabun, Kab. Rokan Hulu, Riau	100° 42' 13.51" E	0° 31' 52.92" U	19,469.17	No	02 January 2022
69	Kasroji	2.06	2.06	Ds. Boncah Kesuma, Kec. Kabun, Kab. Rokan Hulu, Riau	100° 42' 17.52" E	0° 31' 52.94" U	6,362.01	No	02 January 2022
70	Taruni	1.85	1.85	Ds. Boncah Kesuma, Kec. Kabun, Kab. Rokan Hulu, Riau	100° 42' 24.16" E	0° 31' 52.98" U	25,361.21	No	02 January 2022
71	Miduk H.siregar	1.90	1.90	Ds. Boncah Kesuma, Kec. Kabun, Kab. Rokan Hulu, Riau	100° 42' 27.16" E	0° 31' 53.02" U	24,919.37	No	02 January 2022
72	H Siswanto	1.76	1.76	Ds. Boncah Kesuma, Kec. Kabun, Kab. Rokan Hulu, Riau	100° 42' 30.93" E	0° 31' 53.23" U	1,852.77	No	02 January 2022
73	Abdi Wijaya	4.10	4.10	Ds. Boncah Kesuma, Kec. Kabun, Kab. Rokan Hulu, Riau	100° 42' 33.6" E	0° 31' 48.79" U	4,652.50	No	02 January 2022
74	Ketut sutayasa	2.01	2.01	Ds. Boncah Kesuma, Kec. Kabun, Kab. Rokan Hulu, Riau	100° 42' 39.35" E	0° 31' 44.75" U	45,546.79	No	02 January 2022
75	Suliyem	1.28	1.28	Ds. Boncah Kesuma, Kec. Kabun, Kab. Rokan Hulu, Riau	100° 42' 34.39" E	0° 31' 44.89" U	21,343.83	No	02 January 2022
76	Purnomo	1.24	1.24	Ds. Boncah Kesuma, Kec. Kabun, Kab. Rokan Hulu, Riau	100° 42' 30.66" E	0° 31' 44.96" U	13,163.07	No	02 January 2022
77	Parsaroan Simamora	2.02	2.02	Ds. Boncah Kesuma, Kec. Kabun, Kab. Rokan Hulu, Riau	100° 42' 27.23" E	0° 31' 46.47" U	51,490.94	No	02 January 2022
78	Joko Suryono	2.01	2.01	Ds. Boncah Kesuma, Kec. Kabun, Kab. Rokan Hulu, Riau	100° 42' 23.98" E	0° 31' 46.44" U	31,131.05	No	02 January 2022
79	Rifa'i	1.96	1.96	Ds. Boncah Kesuma, Kec. Kabun, Kab. Rokan Hulu, Riau	100° 42' 17.52" E	0° 31' 46.39" U	31,788.82	No	02 January 2022
80	Suparto	1.94	1.94	Ds. Boncah Kesuma, Kec. Kabun, Kab. Rokan Hulu, Riau	100° 42' 11.05" E	0° 31' 46.34" U	15,897.97	No	02 January 2022
81	Pinta Sitepu	1.98	1.98	Ds. Boncah Kesuma, Kec. Kabun, Kab. Rokan Hulu, Riau	100° 42' 4.59" E	0° 31' 46.32" U	1,188.03	No	02 January 2022
82	Sudiman	0.96	0.96	Ds. Boncah Kesuma, Kec. Kabun, Kab. Rokan Hulu, Riau	100° 42' 2.16" E	0° 31' 46.3" U	768.74	No	02 January 2022
83	Eko Saryanto	1.11	1.11	Ds. Boncah Kesuma, Kec. Kabun, Kab. Rokan Hulu, Riau	100° 42' 1.38" E	0° 31' 41.49" U	203.01	No	02 January 2022
84	Harno	2.01	2.01	Ds. Boncah Kesuma, Kec. Kabun, Kab. Rokan Hulu, Riau	100° 42' 3.15" E	0° 31' 38.26" U	25,250.20	No	02 January 2022
85	Sam hasiholan Sitompul	1.81	1.81	Ds. Boncah Kesuma, Kec. Kabun, Kab. Rokan Hulu, Riau	100° 42' 9.32" E	0° 31' 30.98" U	41,681.15	No	02 January 2022
86	Tukirah	2.54	2.54	Ds. Boncah Kesuma, Kec. Kabun, Kab. Rokan Hulu, Riau	100° 42' 9.73" E	0° 31' 34.73" U	21,760.31	No	02 January 2022
87	Sunardi	1.89	1.89	Ds. Boncah Kesuma, Kec. Kabun, Kab. Rokan Hulu, Riau	100° 42' 9.69" E	0° 31' 38.34" U	29,964.11	No	02 January 2022
88	Minto Semin	1.95	1.95	Ds. Boncah Kesuma, Kec. Kabun, Kab. Rokan Hulu, Riau	100° 42' 9.64" E	0° 31' 41.53" U	31,848.01	No	02 January 2022

89	Suratman	2.11	2.11	Ds. Boncah Kesuma, Kec. Kabun, Kab. Rokan Hulu, Riau	100° 42' 4.2" E	0° 30' 47.94" U	3,517.10	No	02 January 2022
90	Tarmudi	1.94	1.94	Ds. Boncah Kesuma, Kec. Kabun, Kab. Rokan Hulu, Riau	100° 42' 1.84" E	0° 30' 47.93" U	24,200.68	No	02 January 2022
91	Widodo	2.00	2.00	Ds. Boncah Kesuma, Kec. Kabun, Kab. Rokan Hulu, Riau	100° 41' 58.7" E	0° 30' 47.92" U	21,992.45	No	02 January 2022
92	Muhammad	1.69	1.69	Ds. Boncah Kesuma, Kec. Kabun, Kab. Rokan Hulu, Riau	100° 41' 55.75" E	0° 30' 47.91" U	33,041.47	No	02 January 2022
93	Nyoman ley sutama	1.97	1.97	Ds. Boncah Kesuma, Kec. Kabun, Kab. Rokan Hulu, Riau	100° 41' 52.81" E	0° 30' 47.9" U	33,605.53	No	02 January 2022
94	M.efendi	2.03	2.03	Ds. Boncah Kesuma, Kec. Kabun, Kab. Rokan Hulu, Riau	100° 41' 49.59" E	0° 30' 47.91" U	38,150.59	No	02 January 2022
95	Sutrisno	1.99	1.99	Ds. Boncah Kesuma, Kec. Kabun, Kab. Rokan Hulu, Riau	100° 41' 46.34" E	0° 30' 47.89" U	35,778.18	No	02 January 2022
96	Todung Akher	2.00	2.00	Ds. Boncah Kesuma, Kec. Kabun, Kab. Rokan Hulu, Riau	100° 41' 43.11" E	0° 30' 47.9" U	33,059.28	No	02 January 2022
97	Tukimin	1.98	1.98	Ds. Boncah Kesuma, Kec. Kabun, Kab. Rokan Hulu, Riau	100° 41' 39.87" E	0° 30' 47.89" U	25,639.15	No	02 January 2022
98	Sabar	1.97	1.97	Ds. Boncah Kesuma, Kec. Kabun, Kab. Rokan Hulu, Riau	100° 41' 36.64" E	0° 30' 47.88" U	39,207.41	No	02 January 2022
99	Syaiful Rizal	1.97	1.97	Ds. Boncah Kesuma, Kec. Kabun, Kab. Rokan Hulu, Riau	100° 41' 33.4" E	0° 30' 47.88" U	20,439.11	No	02 January 2022
100	Sudarno	1.96	1.96	Ds. Boncah Kesuma, Kec. Kabun, Kab. Rokan Hulu, Riau	100° 41' 30.17" E	0° 30' 47.88" U	13,761.21	No	02 January 2022
101	Syaiful Rizal	1.96	1.96	Ds. Boncah Kesuma, Kec. Kabun, Kab. Rokan Hulu, Riau	100° 41' 26.93" E	0° 30' 47.87" U	22,304.86	No	02 January 2022
102	Sukarno	1.94	1.94	Ds. Boncah Kesuma, Kec. Kabun, Kab. Rokan Hulu, Riau	100° 41' 23.7" E	0° 30' 47.86" U	27,810.41	No	02 January 2022
103	Widodo	1.90	1.90	Ds. Boncah Kesuma, Kec. Kabun, Kab. Rokan Hulu, Riau	100° 41' 20.49" E	0° 30' 47.83" U	24,093.50	No	02 January 2022
104	Widodo	1.89	1.89	Ds. Boncah Kesuma, Kec. Kabun, Kab. Rokan Hulu, Riau	100° 41' 16.42" E	0° 30' 48.87" U	17,495.03	No	02 January 2022
105	Rosmawati	1.88	1.88	Ds. Boncah Kesuma, Kec. Kabun, Kab. Rokan Hulu, Riau	100° 41' 17.43" E	0° 30' 53.47" U	24,870.77	No	02 January 2022
106	Aidatul warni	2.59	2.59	Ds. Boncah Kesuma, Kec. Kabun, Kab. Rokan Hulu, Riau	100° 41' 22.03" E	0° 30' 53.54" U	19,098.14	No	02 January 2022
107	M.Mahmudin Halawa	2.05	2.05	Ds. Boncah Kesuma, Kec. Kabun, Kab. Rokan Hulu, Riau	100° 41' 26.83" E	0° 30' 53.61" U	30,743.46	No	02 January 2022
108	Karyadi	1.87	1.87	Ds. Boncah Kesuma, Kec. Kabun, Kab. Rokan Hulu, Riau	100° 41' 30.87" E	0° 30' 53.63" U	14,605.47	No	02 January 2022
109	Achmad tholib	2.06	2.06	Ds. Boncah Kesuma, Kec. Kabun, Kab. Rokan Hulu, Riau	100° 41' 16.4" E	0° 30' 44.69" U	23,597.42	No	02 January 2022
110	Mahat	2.05	2.05	Ds. Boncah Kesuma, Kec. Kabun, Kab. Rokan Hulu, Riau	100° 41' 16.41" E	0° 30' 40.35" U	31,367.54	No	02 January 2022
111	Wagiman	1.97	1.97	Ds. Boncah Kesuma, Kec. Kabun, Kab. Rokan Hulu, Riau	100° 41' 20.48" E	0° 30' 41.45" U	39,081.51	No	02 January 2022
112	Wariman	1.99	1.99	Ds. Boncah Kesuma, Kec. Kabun, Kab. Rokan Hulu, Riau	100° 41' 23.7" E	0° 30' 41.45" U	26,078.71	No	02 January 2022
113	M.Mahmudin Halawa	1.99	1.99	Ds. Boncah Kesuma, Kec. Kabun, Kab. Rokan Hulu, Riau	100° 41' 26.93" E	0° 30' 41.45" U	30,031.67	No	02 January 2022
114	Sontang Siregar	1.98	1.98	Ds. Boncah Kesuma, Kec. Kabun, Kab. Rokan Hulu, Riau	100° 41' 30.16" E	0° 30' 41.45" U	34,425.18	No	02 January 2022
115	Muirun	1.98	1.98	Ds. Boncah Kesuma, Kec. Kabun, Kab. Rokan Hulu, Riau	100° 41' 33.4" E	0° 30' 41.45" U	27,827.57	No	02 January 2022
116	Mahmuda siregar	1.97	1.97	Ds. Boncah Kesuma, Kec. Kabun, Kab. Rokan Hulu, Riau	100° 41' 36.63" E	0° 30' 41.45" U	23,545.69	No	02 January 2022
117	Todung Akher	1.97	1.97	Ds. Boncah Kesuma, Kec. Kabun, Kab. Rokan Hulu, Riau	100° 41' 39.87" E	0° 30' 41.45" U	30,401.40	No	02 January 2022
118	Paryadi	1.97	1.97	Ds. Boncah Kesuma, Kec. Kabun, Kab. Rokan Hulu, Riau	100° 41' 43.1" E	0° 30' 41.45" U	28,333.33	No	02 January 2022

119	Winarno	1.96	1.96	Ds. Boncah Kesuma, Kec. Kabun, Kab. Rokan Hulu, Riau	100° 41' 46.34" E	0° 30' 41.45" U	31,754.32	No	02 January 2022
120	Madeley susiyati	1.97	1.97	Ds. Boncah Kesuma, Kec. Kabun, Kab. Rokan Hulu, Riau	100° 41' 49.58" E	0° 30' 41.46" U	35,683.84	No	02 January 2022
121	Marsem apri asim	1.94	1.94	Ds. Boncah Kesuma, Kec. Kabun, Kab. Rokan Hulu, Riau	100° 41' 52.82" E	0° 30' 41.45" U	31,282.13	No	02 January 2022
122	Sontang siregar	1.66	1.66	Ds. Boncah Kesuma, Kec. Kabun, Kab. Rokan Hulu, Riau	100° 41' 55.79" E	0° 30' 41.43" U	32,616.04	No	02 January 2022
123	Aini nur azizah	1.93	1.93	Ds. Boncah Kesuma, Kec. Kabun, Kab. Rokan Hulu, Riau	100° 41' 58.76" E	0° 30' 41.46" U	22,089.75	No	02 January 2022
124	Ketut sutayasa	1.89	1.89	Ds. Boncah Kesuma, Kec. Kabun, Kab. Rokan Hulu, Riau	100° 42' 1.93" E	0° 30' 41.47" U	28,573.69	No	02 January 2022
125	Minggu parningotan siregar	2.05	2.05	Ds. Boncah Kesuma, Kec. Kabun, Kab. Rokan Hulu, Riau	100° 42' 5.2" E	0° 30' 41.49" U	31,700.68	No	02 January 2022
126	M Khusnun	2.06	2.06	Ds. Boncah Kesuma, Kec. Kabun, Kab. Rokan Hulu, Riau	100° 42' 5.24" E	0° 30' 35.06" U	27,123.08	No	02 January 2022
127	Warman	1.95	1.95	Ds. Boncah Kesuma, Kec. Kabun, Kab. Rokan Hulu, Riau	100° 42' 2" E	0° 30' 35.04" U	31,507.66	No	02 January 2022
128	Misman	2.01	2.01	Ds. Boncah Kesuma, Kec. Kabun, Kab. Rokan Hulu, Riau	100° 41' 58.81" E	0° 30' 35.02" U	32,672.82	No	02 January 2022
129	Ahmad hamdani	1.70	1.70	Ds. Boncah Kesuma, Kec. Kabun, Kab. Rokan Hulu, Riau	100° 41' 55.81" E	0° 30' 34.99" U	28,965.14	No	02 January 2022
130	Siti jamila	2.01	2.01	Ds. Boncah Kesuma, Kec. Kabun, Kab. Rokan Hulu, Riau	100° 41' 52.82" E	0° 30' 35.01" U	27,176.28	No	02 January 2022
131	M.Efendi	2.01	2.01	Ds. Boncah Kesuma, Kec. Kabun, Kab. Rokan Hulu, Riau	100° 41' 49.58" E	0° 30' 35.01" U	36,363.36	No	02 January 2022
132	Minggu parningotan s	2.01	2.01	Ds. Boncah Kesuma, Kec. Kabun, Kab. Rokan Hulu, Riau	100° 41' 46.34" E	0° 30' 35" U	37,203.57	No	02 January 2022
133	Suyono Nardi	2.01	2.01	Ds. Boncah Kesuma, Kec. Kabun, Kab. Rokan Hulu, Riau	100° 41' 43.1" E	0° 30' 34.99" U	26,471.68	No	02 January 2022
134	Sukirman	2.00	2.00	Ds. Boncah Kesuma, Kec. Kabun, Kab. Rokan Hulu, Riau	100° 41' 39.87" E	0° 30' 34.98" U	32,627.71	No	02 January 2022
135	Maryanto	2.00	2.00	Ds. Boncah Kesuma, Kec. Kabun, Kab. Rokan Hulu, Riau	100° 41' 36.64" E	0° 30' 34.98" U	29,286.48	No	02 January 2022
136	Kartini	2.00	2.00	Ds. Boncah Kesuma, Kec. Kabun, Kab. Rokan Hulu, Riau	100° 41' 33.4" E	0° 30' 34.97" U	32,703.37	No	02 January 2022
137	Ahmad Jumal	2.00	2.00	Ds. Boncah Kesuma, Kec. Kabun, Kab. Rokan Hulu, Riau	100° 41' 30.17" E	0° 30' 34.96" U	34,994.52	No	02 January 2022
138	Sutrisno	2.00	2.00	Ds. Boncah Kesuma, Kec. Kabun, Kab. Rokan Hulu, Riau	100° 41' 26.93" E	0° 30' 34.95" U	27,204.72	No	02 January 2022
139	Muksin	2.00	2.00	Ds. Boncah Kesuma, Kec. Kabun, Kab. Rokan Hulu, Riau	100° 41' 23.7" E	0° 30' 34.95" U	28,783.80	No	02 January 2022
140	Waljiyem	1.97	1.97	Ds. Boncah Kesuma, Kec. Kabun, Kab. Rokan Hulu, Riau	100° 41' 20.49" E	0° 30' 34.94" U	38,488.34	No	02 January 2022
141	Singkir	2.05	2.05	Ds. Boncah Kesuma, Kec. Kabun, Kab. Rokan Hulu, Riau	100° 41' 16.41" E	0° 30' 36.01" U	28,967.30	No	02 January 2022
142	Prawiro	2.01	2.01	Ds. Boncah Kesuma, Kec. Kabun, Kab. Rokan Hulu, Riau	100° 41' 16.45" E	0° 30' 31.7" U	30,283.41	No	02 January 2022
143	Syabtimarni	1.60	1.60	Ds. Boncah Kesuma, Kec. Kabun, Kab. Rokan Hulu, Riau	100° 41' 16.94" E	0° 30' 27.45" U	17,532.88	No	02 January 2022
144	Syabtimarni	2.00	2.00	Ds. Boncah Kesuma, Kec. Kabun, Kab. Rokan Hulu, Riau	100° 41' 20.46" E	0° 30' 28.39" U	19,375.18	No	02 January 2022
145	Qosim	2.01	2.01	Ds. Boncah Kesuma, Kec. Kabun, Kab. Rokan Hulu, Riau	100° 41' 23.69" E	0° 30' 28.42" U	40,405.55	No	02 January 2022
146	Herianto Simare mare	2.02	2.02	Ds. Boncah Kesuma, Kec. Kabun, Kab. Rokan Hulu, Riau	100° 41' 26.93" E	0° 30' 28.41" U	27,934.04	No	02 January 2022
147	Tukimin	2.01	2.01	Ds. Boncah Kesuma, Kec. Kabun, Kab. Rokan Hulu, Riau	100° 41' 30.17" E	0° 30' 28.43" U	40,047.28	No	02 January 2022
148	Muirun	2.01	2.01	Ds. Boncah Kesuma, Kec. Kabun, Kab. Rokan Hulu, Riau	100° 41' 33.4" E	0° 30' 28.44" U	28,605.01	No	02 January 2022

149	Marisih s	2.01	2.01	Ds. Boncah Kesuma, Kec. Kabun, Kab. Rokan Hulu, Riau	100° 41' 36.64" E	0° 30' 28.45" U	32,338.26	No	02 January 2022
150	Sumanto	2.02	2.02	Ds. Boncah Kesuma, Kec. Kabun, Kab. Rokan Hulu, Riau	100° 41' 39.88" E	0° 30' 28.45" U	34,462.86	No	02 January 2022
151	Usnan	2.00	2.00	Ds. Boncah Kesuma, Kec. Kabun, Kab. Rokan Hulu, Riau	100° 41' 43.12" E	0° 30' 28.46" U	29,093.07	No	02 January 2022
152	Nasikha	2.01	2.01	Ds. Boncah Kesuma, Kec. Kabun, Kab. Rokan Hulu, Riau	100° 41' 46.35" E	0° 30' 28.46" U	29,409.63	No	02 January 2022
153	Suaman	2.00	2.00	Ds. Boncah Kesuma, Kec. Kabun, Kab. Rokan Hulu, Riau	100° 41' 49.58" E	0° 30' 28.48" U	28,772.41	No	02 January 2022
154	Nuryani	2.02	2.02	Ds. Boncah Kesuma, Kec. Kabun, Kab. Rokan Hulu, Riau	100° 41' 52.81" E	0° 30' 28.47" U	30,745.00	No	02 January 2022
155	Siti jamila	1.74	1.74	Ds. Boncah Kesuma, Kec. Kabun, Kab. Rokan Hulu, Riau	100° 41' 55.84" E	0° 30' 28.49" U	32,053.30	No	02 January 2022
156	Slamet	2.00	2.00	Ds. Boncah Kesuma, Kec. Kabun, Kab. Rokan Hulu, Riau	100° 41' 58.86" E	0° 30' 28.52" U	35,787.33	No	02 January 2022
157	Muhammad Tupon	1.96	1.96	Ds. Boncah Kesuma, Kec. Kabun, Kab. Rokan Hulu, Riau	100° 42' 2.06" E	0° 30' 28.51" U	28,623.08	No	02 January 2022
158	Nasril Bahri Siregar	2.02	2.02	Ds. Boncah Kesuma, Kec. Kabun, Kab. Rokan Hulu, Riau	100° 42' 5.28" E	0° 30' 28.54" U	33,442.61	No	02 January 2022
159	Triantoro	1.96	1.96	Ds. Boncah Kesuma, Kec. Kabun, Kab. Rokan Hulu, Riau	100° 42' 5.32" E	0° 30' 22.05" U	34,913.98	No	02 January 2022
160	Mas'ud	1.99	1.99	Ds. Boncah Kesuma, Kec. Kabun, Kab. Rokan Hulu, Riau	100° 42' 2.12" E	0° 30' 22.01" U	39,707.65	No	02 January 2022
161	Mahmuda Siregar	1.98	1.98	Ds. Boncah Kesuma, Kec. Kabun, Kab. Rokan Hulu, Riau	100° 41' 58.9" E	0° 30' 22.01" U	34,945.06	No	02 January 2022
162	Wani	1.82	1.82	Ds. Boncah Kesuma, Kec. Kabun, Kab. Rokan Hulu, Riau	100° 41' 55.82" E	0° 30' 21.95" U	29,511.54	No	02 January 2022
163	Ramadhan harahap	1.93	1.93	Ds. Boncah Kesuma, Kec. Kabun, Kab. Rokan Hulu, Riau	100° 41' 52.76" E	0° 30' 22.03" U	36,799.23	No	02 January 2022
164	Hasoloan Sianturi	1.93	1.93	Ds. Boncah Kesuma, Kec. Kabun, Kab. Rokan Hulu, Riau	100° 41' 49.59" E	0° 30' 22" U	19,225.45	No	02 January 2022
165	Haifah	1.94	1.94	Ds. Boncah Kesuma, Kec. Kabun, Kab. Rokan Hulu, Riau	100° 41' 46.42" E	0° 30' 22" U	31,912.66	No	02 January 2022
166	Abdul Hamid	2.00	2.00	Ds. Boncah Kesuma, Kec. Kabun, Kab. Rokan Hulu, Riau	100° 41' 43.19" E	0° 30' 21.97" U	26,661.34	No	02 January 2022
167	NurLailanis	2.00	2.00	Ds. Boncah Kesuma, Kec. Kabun, Kab. Rokan Hulu, Riau	100° 41' 39.92" E	0° 30' 21.98" U	30,875.14	No	02 January 2022
168	Nariadi	1.99	1.99	Ds. Boncah Kesuma, Kec. Kabun, Kab. Rokan Hulu, Riau	100° 41' 36.65" E	0° 30' 21.95" U	28,710.16	No	02 January 2022
169	Sumarno	1.97	1.97	Ds. Boncah Kesuma, Kec. Kabun, Kab. Rokan Hulu, Riau	100° 41' 33.4" E	0° 30' 21.96" U	25,375.58	No	02 January 2022
170	Anter	1.96	1.96	Ds. Boncah Kesuma, Kec. Kabun, Kab. Rokan Hulu, Riau	100° 41' 30.18" E	0° 30' 21.95" U	30,521.91	No	02 January 2022
171	Sumitro	2.08	2.08	Ds. Boncah Kesuma, Kec. Kabun, Kab. Rokan Hulu, Riau	100° 41' 27.48" E	0° 30' 20.13" U	34,343.80	No	02 January 2022
172	Ahmad jumal	2.06	2.06	Ds. Boncah Kesuma, Kec. Kabun, Kab. Rokan Hulu, Riau	100° 41' 25.3" E	0° 30' 20.13" U	29,022.53	No	02 January 2022
173	Suwito	2.06	2.06	Ds. Boncah Kesuma, Kec. Kabun, Kab. Rokan Hulu, Riau	100° 41' 23.15" E	0° 30' 20.1" U	29,464.69	No	02 January 2022
174	Sudarno	2.20	2.20	Ds. Boncah Kesuma, Kec. Kabun, Kab. Rokan Hulu, Riau	100° 41' 20.91" E	0° 30' 20.14" U	13,864.58	No	02 January 2022
175	Riayadi	1.91	1.91	Ds. Boncah Kesuma, Kec. Kabun, Kab. Rokan Hulu, Riau	100° 41' 18.76" E	0° 30' 20.07" U	18,673.85	No	02 January 2022
176	Siti maryati	3.27	3.27	Ds. Boncah Kesuma, Kec. Kabun, Kab. Rokan Hulu, Riau	100° 41' 16.04" E	0° 30' 19.87" U	13,872.88	No	02 January 2022
177	Karyuni	2.23	2.23	Ds. Boncah Kesuma, Kec. Kabun, Kab. Rokan Hulu, Riau	100° 41' 30.11" E	0° 30' 15.13" U	18,849.39	No	02 January 2022
178	Tumon	2.12	2.12	Ds. Boncah Kesuma, Kec. Kabun, Kab. Rokan Hulu, Riau	100° 41' 33.39" E	0° 30' 15.25" U	15,335.51	No	02 January 2022
179	Hasoloan Sianturi	2.20	2.20	Ds. Boncah Kesuma, Kec. Kabun, Kab. Rokan Hulu, Riau	100° 41' 36.66" E	0° 30' 15.27" U	18,846.27	No	02 January 2022

180	Nur cholis	2.13	2.13	Ds. Boncah Kesuma, Kec. Kabun, Kab. Rokan Hulu, Riau	100° 41' 39.96" E	0° 30' 15.32" U	31,152.74	No	02 January 2022
181	Herbert Henry S	2.17	2.17	Ds. Boncah Kesuma, Kec. Kabun, Kab. Rokan Hulu, Riau	100° 41' 43.26" E	0° 30' 15.35" U	26,363.68	No	02 January 2022
182	Hotmer Panggabean	2.00	2.00	Ds. Boncah Kesuma, Kec. Kabun, Kab. Rokan Hulu, Riau	100° 41' 46.49" E	0° 30' 15.41" U	20,276.90	No	02 January 2022
183	Rudi herwindo	2.00	2.00	Ds. Boncah Kesuma, Kec. Kabun, Kab. Rokan Hulu, Riau	100° 41' 49.6" E	0° 30' 15.42" U	14,084.88	No	02 January 2022
184	Misman	1.99	1.99	Ds. Boncah Kesuma, Kec. Kabun, Kab. Rokan Hulu, Riau	100° 41' 52.71" E	0° 30' 15.45" U	27,128.86	No	02 January 2022
185	Sudiaman S	1.92	1.92	Ds. Boncah Kesuma, Kec. Kabun, Kab. Rokan Hulu, Riau	100° 41' 55.81" E	0° 30' 15.45" U	38,830.56	No	02 January 2022
186	Sukarno	1.99	1.99	Ds. Boncah Kesuma, Kec. Kabun, Kab. Rokan Hulu, Riau	100° 41' 58.93" E	0° 30' 15.48" U	36,356.34	No	02 January 2022
187	Berkati zidomi	1.92	1.92	Ds. Boncah Kesuma, Kec. Kabun, Kab. Rokan Hulu, Riau	100° 42' 5.37" E	0° 30' 15.54" U	15,715.83	No	02 January 2022
188	Budi hairudin	2.12	2.12	Ds. Boncah Kesuma, Kec. Kabun, Kab. Rokan Hulu, Riau	100° 42' 5.4" E	0° 30' 8.56" U	35,572.97	No	02 January 2022
189	Pebri Yendi	2.30	2.30	Ds. Boncah Kesuma, Kec. Kabun, Kab. Rokan Hulu, Riau	100° 42' 2.24" E	0° 30' 8.55" U	20,936.51	No	02 January 2022
190	Winarno	2.24	2.24	Ds. Boncah Kesuma, Kec. Kabun, Kab. Rokan Hulu, Riau	100° 41' 59" E	0° 30' 8.5" U	22,698.43	No	02 January 2022
191	Sutikno	1.92	1.92	Ds. Boncah Kesuma, Kec. Kabun, Kab. Rokan Hulu, Riau	100° 41' 44.73" E	0° 30' 10.36" U	14,264.70	No	02 January 2022
192	Herbert Henry S	1.99	1.99	Ds. Boncah Kesuma, Kec. Kabun, Kab. Rokan Hulu, Riau	100° 41' 38.33" E	0° 30' 10.28" U	19,160.98	No	02 January 2022
193	Tumon	1.87	1.87	Ds. Boncah Kesuma, Kec. Kabun, Kab. Rokan Hulu, Riau	100° 41' 31.66" E	0° 30' 10.24" U	13,669.70	No	02 January 2022
194	Fatoni	1.98	1.98	Ds. Boncah Kesuma, Kec. Kabun, Kab. Rokan Hulu, Riau	100° 42' 2.55" E	0° 30' 3.67" U	25,853.12	No	02 January 2022
195	Suhadi	1.99	1.99	Ds. Boncah Kesuma, Kec. Kabun, Kab. Rokan Hulu, Riau	100° 42' 38.09" E	0° 30' 7.4" U	28,001.72	No	02 January 2022
196	Mohammad Yusuf	1.98	1.98	Ds. Boncah Kesuma, Kec. Kabun, Kab. Rokan Hulu, Riau	100° 42' 35.93" E	0° 30' 7.41" U	25,152.80	No	02 January 2022
197	Dardji	2.02	2.02	Ds. Boncah Kesuma, Kec. Kabun, Kab. Rokan Hulu, Riau	100° 42' 33.77" E	0° 30' 7.35" U	37,111.30	No	02 January 2022
198	Hero	2.02	2.02	Ds. Boncah Kesuma, Kec. Kabun, Kab. Rokan Hulu, Riau	100° 42' 31.6" E	0° 30' 7.34" U	35,888.04	No	02 January 2022
199	Suhardi	2.01	2.01	Ds. Boncah Kesuma, Kec. Kabun, Kab. Rokan Hulu, Riau	100° 42' 29.43" E	0° 30' 7.33" U	29,830.00	No	02 January 2022
200	Valle Sianturi	3.02	3.02	Ds. Boncah Kesuma, Kec. Kabun, Kab. Rokan Hulu, Riau	100° 42' 26.73" E	0° 30' 7.3" U	24,786.12	No	02 January 2022
201	Mustahmid	2.48	2.48	Ds. Boncah Kesuma, Kec. Kabun, Kab. Rokan Hulu, Riau	100° 42' 23.79" E	0° 30' 7.31" U	43,657.05	No	02 January 2022
202	Supardi	2.58	2.58	Ds. Boncah Kesuma, Kec. Kabun, Kab. Rokan Hulu, Riau	100° 42' 21.1" E	0° 30' 7.26" U	31,270.25	No	02 January 2022
203	Linggom Hs	2.06	2.06	Ds. Boncah Kesuma, Kec. Kabun, Kab. Rokan Hulu, Riau	100° 42' 18.64" E	0° 30' 7.22" U	16,135.59	No	02 January 2022
204	Ade aminah	2.05	2.05	Ds. Boncah Kesuma, Kec. Kabun, Kab. Rokan Hulu, Riau	100° 42' 16.47" E	0° 30' 7.24" U	35,282.71	No	02 January 2022
205	Masnah	2.07	2.07	Ds. Boncah Kesuma, Kec. Kabun, Kab. Rokan Hulu, Riau	100° 42' 14.3" E	0° 30' 7.22" U	22,771.50	No	02 January 2022
206	Sri Dani	2.05	2.05	Ds. Boncah Kesuma, Kec. Kabun, Kab. Rokan Hulu, Riau	100° 42' 12.14" E	0° 30' 7.21" U	27,757.39	No	02 January 2022
207	Siswoyo	1.78	1.78	Ds. Boncah Kesuma, Kec. Kabun, Kab. Rokan Hulu, Riau	100° 42' 10.14" E	0° 30' 7.2" U	21,894.48	No	02 January 2022
208	Sudiman	2.18	2.18	Ds. Boncah Kesuma, Kec. Kabun, Kab. Rokan Hulu, Riau	100° 42' 8.06" E	0° 30' 7.24" U	27,966.06	No	02 January 2022
209	Sukono	1.94	1.94	Ds. Boncah Kesuma, Kec. Kabun, Kab. Rokan Hulu, Riau	100° 42' 8.47" E	0° 30' 15.54" U	37,976.95	No	02 January 2022
210	Muhammad Yusuf	2.05	2.05	Ds. Boncah Kesuma, Kec. Kabun, Kab. Rokan Hulu, Riau	100° 42' 11.66" E	0° 30' 15.53" U	2,773.52	No	02 January 2022

211	Siswanto	2.03	2.03	Ds. Boncah Kesuma, Kec. Kabun, Kab. Rokan Hulu, Riau	100° 42' 14.9" E	0° 30' 15.55" U	2,147.73	No	02 January 2022
212	Sukono	2.01	2.01	Ds. Boncah Kesuma, Kec. Kabun, Kab. Rokan Hulu, Riau	100° 42' 18.1" E	0° 30' 15.55" U	24,045.25	No	02 January 2022
213	Nasril bahri S	2.05	2.05	Ds. Boncah Kesuma, Kec. Kabun, Kab. Rokan Hulu, Riau	100° 42' 24.66" E	0° 30' 15.57" U	25,389.89	No	02 January 2022
214	asmardi alidin	2.04	2.04	Ds. Boncah Kesuma, Kec. Kabun, Kab. Rokan Hulu, Riau	100° 42' 27.86" E	0° 30' 15.58" U	36,802.71	No	02 January 2022
215	I Wayan Kartama	2.06	2.06	Ds. Boncah Kesuma, Kec. Kabun, Kab. Rokan Hulu, Riau	100° 42' 31.07" E	0° 30' 15.6" U	45,061.89	No	02 January 2022
216	Wadinah	2.07	2.07	Ds. Boncah Kesuma, Kec. Kabun, Kab. Rokan Hulu, Riau	100° 42' 34.3" E	0° 30' 15.61" U	27,457.56	No	02 January 2022
217	Rudi wansyah	2.06	2.06	Ds. Boncah Kesuma, Kec. Kabun, Kab. Rokan Hulu, Riau	100° 42' 36.68" E	0° 30' 15.61" U	2,589.38	No	02 January 2022
218	Mansyur	1.97	1.97	Ds. Boncah Kesuma, Kec. Kabun, Kab. Rokan Hulu, Riau	100° 42' 37.54" E	0° 30' 22.18" U	29,402.30	No	02 January 2022
219	Titin hikmawati	1.97	1.97	Ds. Boncah Kesuma, Kec. Kabun, Kab. Rokan Hulu, Riau	100° 42' 34.3" E	0° 30' 22.17" U	31,043.75	No	02 January 2022
220	Abdul Muin	1.96	1.96	Ds. Boncah Kesuma, Kec. Kabun, Kab. Rokan Hulu, Riau	100° 42' 31.07" E	0° 30' 22.16" U	30,178.59	No	02 January 2022
221	Abdul Muin	1.95	1.95	Ds. Boncah Kesuma, Kec. Kabun, Kab. Rokan Hulu, Riau	100° 42' 27.85" E	0° 30' 22.16" U	31,167.31	No	02 January 2022
222	Asnel	1.96	1.96	Ds. Boncah Kesuma, Kec. Kabun, Kab. Rokan Hulu, Riau	100° 42' 24.64" E	0° 30' 22.14" U	27,293.87	No	02 January 2022
223	Willem Makatipu	2.05	2.05	Ds. Boncah Kesuma, Kec. Kabun, Kab. Rokan Hulu, Riau	100° 42' 21.35" E	0° 30' 22.12" U	30,782.06	No	02 January 2022
224	Sri Dani	1.93	1.93	Ds. Boncah Kesuma, Kec. Kabun, Kab. Rokan Hulu, Riau	100° 42' 18.09" E	0° 30' 22.1" U	28,079.98	No	02 January 2022
225	Harni	1.98	1.98	Ds. Boncah Kesuma, Kec. Kabun, Kab. Rokan Hulu, Riau	100° 42' 14.9" E	0° 30' 22.09" U	32,158.03	No	02 January 2022
226	Agus sani	1.99	1.99	Ds. Boncah Kesuma, Kec. Kabun, Kab. Rokan Hulu, Riau	100° 42' 11.66" E	0° 30' 22.07" U	41,208.95	No	02 January 2022
227	Sukirno	1.93	1.93	Ds. Boncah Kesuma, Kec. Kabun, Kab. Rokan Hulu, Riau	100° 42' 8.48" E	0° 30' 22.06" U	43,155.30	No	02 January 2022
228	Supriyanti	1.93	1.93	Ds. Boncah Kesuma, Kec. Kabun, Kab. Rokan Hulu, Riau	100° 42' 8.48" E	0° 30' 28.55" U	34,681.70	No	02 January 2022
229	Muhammad mutopipin	2.00	2.00	Ds. Boncah Kesuma, Kec. Kabun, Kab. Rokan Hulu, Riau	100° 42' 11.66" E	0° 30' 28.56" U	34,626.27	No	02 January 2022
230	Sutiyah	1.99	1.99	Ds. Boncah Kesuma, Kec. Kabun, Kab. Rokan Hulu, Riau	100° 42' 14.89" E	0° 30' 28.56" U	32,375.77	No	02 January 2022
231	Sri wahyuni	1.93	1.93	Ds. Boncah Kesuma, Kec. Kabun, Kab. Rokan Hulu, Riau	100° 42' 18.08" E	0° 30' 28.56" U	36,884.53	No	02 January 2022
232	Endang suzana	2.06	2.06	Ds. Boncah Kesuma, Kec. Kabun, Kab. Rokan Hulu, Riau	100° 42' 21.33" E	0° 30' 28.57" U	33,837.45	No	02 January 2022
233	Yuliana	1.97	1.97	Ds. Boncah Kesuma, Kec. Kabun, Kab. Rokan Hulu, Riau	100° 42' 24.62" E	0° 30' 28.57" U	36,652.67	No	02 January 2022
234	harwanto	1.97	1.97	Ds. Boncah Kesuma, Kec. Kabun, Kab. Rokan Hulu, Riau	100° 42' 27.85" E	0° 30' 28.58" U	39,096.97	No	02 January 2022
235	Masluri	1.97	1.97	Ds. Boncah Kesuma, Kec. Kabun, Kab. Rokan Hulu, Riau	100° 42' 31.07" E	0° 30' 28.58" U	35,769.78	No	02 January 2022
236	Ferry Rahmadi	1.98	1.98	Ds. Boncah Kesuma, Kec. Kabun, Kab. Rokan Hulu, Riau	100° 42' 34.3" E	0° 30' 28.59" U	37,631.03	No	02 January 2022
237	Taufik Hidayat	1.97	1.97	Ds. Boncah Kesuma, Kec. Kabun, Kab. Rokan Hulu, Riau	100° 42' 37.53" E	0° 30' 28.6" U	39,451.73	No	02 January 2022
238	Samsul bahri s	2.03	2.03	Ds. Boncah Kesuma, Kec. Kabun, Kab. Rokan Hulu, Riau	100° 42' 37.53" E	0° 30' 35.12" U	28,126.82	No	02 January 2022
239	Muhammad	2.03	2.03	Ds. Boncah Kesuma, Kec. Kabun, Kab. Rokan Hulu, Riau	100° 42' 34.3" E	0° 30' 35.11" U	42,498.83	No	02 January 2022
240	Siti khalima tusa'diyah	2.00	2.00	Ds. Boncah Kesuma, Kec. Kabun, Kab. Rokan Hulu, Riau	100° 42' 31.08" E	0° 30' 35.09" U	30,738.45	No	02 January 2022
241	Gatot Mulyono	2.04	2.04	Ds. Boncah Kesuma, Kec. Kabun, Kab. Rokan Hulu, Riau	100° 42' 27.85" E	0° 30' 35.09" U	39,070.24	No	02 January 2022

242	Suhaimi	2.01	2.01	Ds. Boncah Kesuma, Kec. Kabun, Kab. Rokan Hulu, Riau	100° 42' 24.61" E	0° 30' 35.08" U	41,636.91	No	02 January 2022
243	Kalimah	2.10	2.10	Ds. Boncah Kesuma, Kec. Kabun, Kab. Rokan Hulu, Riau	100° 42' 21.32" E	0° 30' 35.08" U	32,131.46	No	02 January 2022
244	Parmi	1.95	1.95	Ds. Boncah Kesuma, Kec. Kabun, Kab. Rokan Hulu, Riau	100° 42' 18.07" E	0° 30' 35.08" U	29,383.04	No	02 January 2022
245	Guno wikarto	2.02	2.02	Ds. Boncah Kesuma, Kec. Kabun, Kab. Rokan Hulu, Riau	100° 42' 14.89" E	0° 30' 35.08" U	31,996.59	No	02 January 2022
246	Fatori	2.01	2.01	Ds. Boncah Kesuma, Kec. Kabun, Kab. Rokan Hulu, Riau	100° 42' 11.66" E	0° 30' 35.08" U	17,003.68	No	02 January 2022
247	Marihot Silaban	1.95	1.95	Ds. Boncah Kesuma, Kec. Kabun, Kab. Rokan Hulu, Riau	100° 42' 8.47" E	0° 30' 35.08" U	27,728.32	No	02 January 2022
248	Sidri rizqi yuniati	1.89	1.89	Ds. Boncah Kesuma, Kec. Kabun, Kab. Rokan Hulu, Riau	100° 42' 8.47" E	0° 30' 41.51" U	15,765.90	No	02 January 2022
249	Sri Andrianti	1.95	1.95	Ds. Boncah Kesuma, Kec. Kabun, Kab. Rokan Hulu, Riau	100° 42' 11.66" E	0° 30' 41.52" U	33,394.77	No	02 January 2022
250	Eka Mardiyanti	1.97	1.97	Ds. Boncah Kesuma, Kec. Kabun, Kab. Rokan Hulu, Riau	100° 42' 14.9" E	0° 30' 41.54" U	28,543.39	No	02 January 2022
251	Sukis Haryanto	1.86	1.86	Ds. Boncah Kesuma, Kec. Kabun, Kab. Rokan Hulu, Riau	100° 42' 18.07" E	0° 30' 41.53" U	34,443.59	No	02 January 2022
252	Affika Fitriyanti	2.03	2.03	Ds. Boncah Kesuma, Kec. Kabun, Kab. Rokan Hulu, Riau	100° 42' 21.29" E	0° 30' 41.55" U	31,543.30	No	02 January 2022
253	Marno	1.97	1.97	Ds. Boncah Kesuma, Kec. Kabun, Kab. Rokan Hulu, Riau	100° 42' 24.59" E	0° 30' 41.57" U	36,217.35	No	02 January 2022
254	Sutrisno	1.99	1.99	Ds. Boncah Kesuma, Kec. Kabun, Kab. Rokan Hulu, Riau	100° 42' 27.86" E	0° 30' 41.57" U	32,968.84	No	02 January 2022
255	Yulia Hastuti	1.91	1.91	Ds. Boncah Kesuma, Kec. Kabun, Kab. Rokan Hulu, Riau	100° 42' 31.07" E	0° 30' 41.57" U	32,503.06	No	02 January 2022
256	Tawar	1.94	1.94	Ds. Boncah Kesuma, Kec. Kabun, Kab. Rokan Hulu, Riau	100° 42' 34.25" E	0° 30' 41.59" U	32,199.16	No	02 January 2022
257	Ngatinah	2.00	2.00	Ds. Boncah Kesuma, Kec. Kabun, Kab. Rokan Hulu, Riau	100° 42' 37.51" E	0° 30' 41.63" U	35,365.78	No	02 January 2022
258	Bi'at	1.97	1.97	Ds. Boncah Kesuma, Kec. Kabun, Kab. Rokan Hulu, Riau	100° 42' 40.79" E	0° 30' 41.63" U	33,932.94	No	02 January 2022
259	Kamsuri	1.92	1.92	Ds. Boncah Kesuma, Kec. Kabun, Kab. Rokan Hulu, Riau	100° 42' 44" E	0° 30' 41.63" U	27,773.53	No	02 January 2022
260	Muhammad nastainu	1.96	1.96	Ds. Boncah Kesuma, Kec. Kabun, Kab. Rokan Hulu, Riau	100° 42' 47.21" E	0° 30' 41.65" U	24,763.15	No	02 January 2022
261	Misyono	1.90	1.90	Ds. Boncah Kesuma, Kec. Kabun, Kab. Rokan Hulu, Riau	100° 42' 50.4" E	0° 30' 41.65" U	32,631.89	No	02 January 2022
262	Sugiarto	1.98	1.98	Ds. Boncah Kesuma, Kec. Kabun, Kab. Rokan Hulu, Riau	100° 42' 53.6" E	0° 30' 41.7" U	13,809.24	No	02 January 2022
263	Syahrudin Tanjung	1.99	1.99	Ds. Boncah Kesuma, Kec. Kabun, Kab. Rokan Hulu, Riau	100° 42' 56.89" E	0° 30' 41.69" U	20,411.67	No	02 January 2022
264	Supriyanti	2.01	2.01	Ds. Boncah Kesuma, Kec. Kabun, Kab. Rokan Hulu, Riau	100° 43' 0.19" E	0° 30' 41.75" U	27,201.79	No	02 January 2022
265	Siti morti Hj	1.94	1.94	Ds. Boncah Kesuma, Kec. Kabun, Kab. Rokan Hulu, Riau	100° 43' 3.39" E	0° 30' 41.79" U	27,358.58	No	02 January 2022
266	Dwi Liswidarti	1.99	1.99	Ds. Boncah Kesuma, Kec. Kabun, Kab. Rokan Hulu, Riau	100° 43' 6.57" E	0° 30' 41.83" U	13,586.01	No	02 January 2022
267	Agus Riyanto	2.00	2.00	Ds. Boncah Kesuma, Kec. Kabun, Kab. Rokan Hulu, Riau	100° 43' 9.81" E	0° 30' 41.78" U	28,463.72	No	02 January 2022
268	Asih Hasanah	2.05	2.05	Ds. Boncah Kesuma, Kec. Kabun, Kab. Rokan Hulu, Riau	100° 43' 10.65" E	0° 30' 35.31" U	3,180.78	No	02 January 2022
269	Asmardi Alidin	1.99	1.99	Ds. Boncah Kesuma, Kec. Kabun, Kab. Rokan Hulu, Riau	100° 43' 6.59" E	0° 30' 35.23" U	22,774.57	No	02 January 2022
270	Sri wahyuni	2.01	2.01	Ds. Boncah Kesuma, Kec. Kabun, Kab. Rokan Hulu, Riau	100° 43' 3.4" E	0° 30' 35.22" U	24,464.63	No	02 January 2022
271	Fatoni Ahmad Dasuki HM	2.04	2.04	Ds. Boncah Kesuma, Kec. Kabun, Kab. Rokan Hulu, Riau	100° 43' 0.18" E	0° 30' 35.21" U	20,411.17	No	02 January 2022
272	Hendra saputra	2.07	2.07	Ds. Boncah Kesuma, Kec. Kabun, Kab. Rokan Hulu, Riau	100° 42' 56.92" E	0° 30' 35.19" U	32,367.51	No	02 January 2022

273	Ahmad Sujadi	2.03	2.03	Ds. Boncah Kesuma, Kec. Kabun, Kab. Rokan Hulu, Riau	100° 42' 53.68" E	0° 30' 35.17" U	37,055.38	No	02 January 2022
274	Abdul Aziz	2.05	2.05	Ds. Boncah Kesuma, Kec. Kabun, Kab. Rokan Hulu, Riau	100° 42' 50.47" E	0° 30' 35.14" U	41,920.34	No	02 January 2022
275	H.Sulaksono	2.05	2.05	Ds. Boncah Kesuma, Kec. Kabun, Kab. Rokan Hulu, Riau	100° 42' 47.24" E	0° 30' 35.14" U	26,855.12	No	02 January 2022
276	Mujiono	2.04	2.04	Ds. Boncah Kesuma, Kec. Kabun, Kab. Rokan Hulu, Riau	100° 42' 44" E	0° 30' 35.13" U	41,851.58	No	02 January 2022
277	Agus riyanti	2.04	2.04	Ds. Boncah Kesuma, Kec. Kabun, Kab. Rokan Hulu, Riau	100° 42' 40.77" E	0° 30' 35.13" U	17,784.59	No	02 January 2022
278	Aris Suari	1.97	1.97	Ds. Boncah Kesuma, Kec. Kabun, Kab. Rokan Hulu, Riau	100° 42' 40.77" E	0° 30' 28.61" U	43,587.81	No	02 January 2022
279	Supardi	1.96	1.96	Ds. Boncah Kesuma, Kec. Kabun, Kab. Rokan Hulu, Riau	100° 42' 44" E	0° 30' 28.62" U	37,612.97	No	02 January 2022
280	Qomariah	1.95	1.95	Ds. Boncah Kesuma, Kec. Kabun, Kab. Rokan Hulu, Riau	100° 42' 47.24" E	0° 30' 28.63" U	32,245.30	No	02 January 2022
281	Samsul Siburian	1.95	1.95	Ds. Boncah Kesuma, Kec. Kabun, Kab. Rokan Hulu, Riau	100° 42' 50.47" E	0° 30' 28.64" U	32,843.41	No	02 January 2022
282	Ruslan	1.95	1.95	Ds. Boncah Kesuma, Kec. Kabun, Kab. Rokan Hulu, Riau	100° 42' 53.71" E	0° 30' 28.66" U	33,443.74	No	02 January 2022
283	Sapuan	1.96	1.96	Ds. Boncah Kesuma, Kec. Kabun, Kab. Rokan Hulu, Riau	100° 42' 56.94" E	0° 30' 28.68" U	37,142.07	No	02 January 2022
284	Nur Lailanis	1.97	1.97	Ds. Boncah Kesuma, Kec. Kabun, Kab. Rokan Hulu, Riau	100° 43' 0.18" E	0° 30' 28.69" U	25,301.44	No	02 January 2022
285	Sugianto	1.98	1.98	Ds. Boncah Kesuma, Kec. Kabun, Kab. Rokan Hulu, Riau	100° 43' 3.41" E	0° 30' 28.71" U	29,765.00	No	02 January 2022
286	Syahir	1.99	1.99	Ds. Boncah Kesuma, Kec. Kabun, Kab. Rokan Hulu, Riau	100° 43' 6.65" E	0° 30' 28.72" U	24,046.51	No	02 January 2022
287	Mutmainah	1.96	1.96	Ds. Boncah Kesuma, Kec. Kabun, Kab. Rokan Hulu, Riau	100° 43' 9.88" E	0° 30' 28.74" U	28,423.55	No	02 January 2022
288	Muhammad al azhar	1.94	1.94	Ds. Boncah Kesuma, Kec. Kabun, Kab. Rokan Hulu, Riau	100° 43' 9.9" E	0° 30' 22.31" U	17,800.50	No	02 January 2022
289	Muhaimin	1.98	1.98	Ds. Boncah Kesuma, Kec. Kabun, Kab. Rokan Hulu, Riau	100° 43' 6.66" E	0° 30' 22.31" U	21,873.80	No	02 January 2022
290	Mhd husein lubis	1.97	1.97	Ds. Boncah Kesuma, Kec. Kabun, Kab. Rokan Hulu, Riau	100° 43' 3.41" E	0° 30' 22.29" U	30,218.92	No	02 January 2022
291	Dumasari	1.97	1.97	Ds. Boncah Kesuma, Kec. Kabun, Kab. Rokan Hulu, Riau	100° 43' 0.18" E	0° 30' 22.28" U	25,318.18	No	02 January 2022
292	Mukadi	1.98	1.98	Ds. Boncah Kesuma, Kec. Kabun, Kab. Rokan Hulu, Riau	100° 42' 56.94" E	0° 30' 22.26" U	24,410.23	No	02 January 2022
293	Arlen	1.98	1.98	Ds. Boncah Kesuma, Kec. Kabun, Kab. Rokan Hulu, Riau	100° 42' 53.71" E	0° 30' 22.25" U	31,272.31	No	02 January 2022
294	Joko Supriyono	1.98	1.98	Ds. Boncah Kesuma, Kec. Kabun, Kab. Rokan Hulu, Riau	100° 42' 50.48" E	0° 30' 22.24" U	31,902.02	No	02 January 2022
295	Sajianto	1.98	1.98	Ds. Boncah Kesuma, Kec. Kabun, Kab. Rokan Hulu, Riau	100° 42' 47.24" E	0° 30' 22.23" U	34,999.96	No	02 January 2022
296	Titin hikmawati	1.98	1.98	Ds. Boncah Kesuma, Kec. Kabun, Kab. Rokan Hulu, Riau	100° 42' 44.01" E	0° 30' 22.21" U	31,377.50	No	02 January 2022
297	Khairum	1.97	1.97	Ds. Boncah Kesuma, Kec. Kabun, Kab. Rokan Hulu, Riau	100° 42' 40.77" E	0° 30' 22.2" U	19,773.38	No	02 January 2022
298	Samud	2.07	2.07	Ds. Boncah Kesuma, Kec. Kabun, Kab. Rokan Hulu, Riau	100° 42' 40.78" E	0° 30' 15.63" U	34,202.51	No	02 January 2022
299	Abd Wahob S	2.03	2.03	Ds. Boncah Kesuma, Kec. Kabun, Kab. Rokan Hulu, Riau	100° 42' 44.01" E	0° 30' 15.68" U	30,297.26	No	02 January 2022
300	Djamari	2.04	2.04	Ds. Boncah Kesuma, Kec. Kabun, Kab. Rokan Hulu, Riau	100° 42' 47.24" E	0° 30' 15.7" U	33,317.77	No	02 January 2022
301	Murdoyo	2.02	2.02	Ds. Boncah Kesuma, Kec. Kabun, Kab. Rokan Hulu, Riau	100° 42' 50.48" E	0° 30' 15.73" U	37,122.68	No	02 January 2022
302	Muhammad al azhar	2.01	2.01	Ds. Boncah Kesuma, Kec. Kabun, Kab. Rokan Hulu, Riau	100° 42' 53.71" E	0° 30' 15.75" U	33,435.43	No	02 January 2022
303	Samud	2.00	2.00	Ds. Boncah Kesuma, Kec. Kabun, Kab. Rokan Hulu, Riau	100° 42' 56.94" E	0° 30' 15.78" U	37,393.12	No	02 January 2022

304	Zamzami	2.00	2.00	Ds. Boncah Kesuma, Kec. Kabun, Kab. Rokan Hulu, Riau	100° 43' 0.18" E	0° 30' 15.81" U	37,672.62	No	02 January 2022
305	Suwarno	2.00	2.00	Ds. Boncah Kesuma, Kec. Kabun, Kab. Rokan Hulu, Riau	100° 43' 3.41" E	0° 30' 15.84" U	36,076.91	No	02 January 2022
306	Hajir	2.02	2.02	Ds. Boncah Kesuma, Kec. Kabun, Kab. Rokan Hulu, Riau	100° 43' 6.66" E	0° 30' 15.85" U	35,217.19	No	02 January 2022
307	Kasman	2.04	2.04	Ds. Boncah Kesuma, Kec. Kabun, Kab. Rokan Hulu, Riau	100° 43' 9.92" E	0° 30' 15.84" U	35,556.80	No	02 January 2022
308	Guno Wikarto	2.08	2.08	Ds. Boncah Kesuma, Kec. Kabun, Kab. Rokan Hulu, Riau	100° 43' 9.95" E	0° 30' 9.27" U	33,728.29	No	02 January 2022
309	Agus Sugito	2.02	2.02	Ds. Boncah Kesuma, Kec. Kabun, Kab. Rokan Hulu, Riau	100° 43' 6.66" E	0° 30' 9.29" U	23,290.71	No	02 January 2022
310	Suimin	1.99	1.99	Ds. Boncah Kesuma, Kec. Kabun, Kab. Rokan Hulu, Riau	100° 43' 3.43" E	0° 30' 9.32" U	36,247.59	No	02 January 2022
311	Suimin	2.03	2.03	Ds. Boncah Kesuma, Kec. Kabun, Kab. Rokan Hulu, Riau	100° 43' 0.2" E	0° 30' 9.28" U	25,533.24	No	02 January 2022
312	Paryadi	2.00	2.00	Ds. Boncah Kesuma, Kec. Kabun, Kab. Rokan Hulu, Riau	100° 42' 56.94" E	0° 30' 9.26" U	32,068.07	No	02 January 2022
313	Tumijo	1.99	1.99	Ds. Boncah Kesuma, Kec. Kabun, Kab. Rokan Hulu, Riau	100° 42' 53.71" E	0° 30' 9.23" U	37,101.90	No	02 January 2022
314	Setiono	1.97	1.97	Ds. Boncah Kesuma, Kec. Kabun, Kab. Rokan Hulu, Riau	100° 42' 50.49" E	0° 30' 9.21" U	33,977.71	No	02 January 2022
315	Agus riyanto	2.00	2.00	Ds. Boncah Kesuma, Kec. Kabun, Kab. Rokan Hulu, Riau	100° 42' 47.25" E	0° 30' 9.17" U	32,435.55	No	02 January 2022
316	lhwanudin	1.97	1.97	Ds. Boncah Kesuma, Kec. Kabun, Kab. Rokan Hulu, Riau	100° 42' 44" E	0° 30' 9.13" U	34,473.22	No	02 January 2022
317	Polman manik	1.95	1.95	Ds. Boncah Kesuma, Kec. Kabun, Kab. Rokan Hulu, Riau	100° 42' 40.77" E	0° 30' 9.11" U	35,234.96	No	02 January 2022
318	Pramono	2.08	2.08	Ds. Boncah Kesuma, Kec. Kabun, Kab. Rokan Hulu, Riau	100° 42' 42.35" E	0° 30' 4.23" U	27,375.02	No	02 January 2022
319	Sayo	2.29	2.29	Ds. Boncah Kesuma, Kec. Kabun, Kab. Rokan Hulu, Riau	100° 42' 48.93" E	0° 30' 4.1" U	33,175.96	No	02 January 2022
320	Sidri rizqi yuniati	2.02	2.02	Ds. Boncah Kesuma, Kec. Kabun, Kab. Rokan Hulu, Riau	100° 42' 55.33" E	0° 30' 4.35" U	22,042.47	No	02 January 2022
321	Wajib	2.11	2.11	Ds. Boncah Kesuma, Kec. Kabun, Kab. Rokan Hulu, Riau	100° 43' 1.82" E	0° 30' 4.32" U	38,922.14	No	02 January 2022
322	Endang triyani	2.09	2.09	Ds. Boncah Kesuma, Kec. Kabun, Kab. Rokan Hulu, Riau	100° 43' 6.69" E	0° 30' 2.69" U	29,633.85	No	02 January 2022
323	Wartono	2.03	2.03	Ds. Boncah Kesuma, Kec. Kabun, Kab. Rokan Hulu, Riau	100° 43' 9.99" E	0° 30' 2.73" U	11,141.87	No	02 January 2022
324	Wahid alhuda	2.32	2.32	Ds. Boncah Kesuma, Kec. Kabun, Kab. Rokan Hulu, Riau	100° 43' 10.58" E	0° 29' 54.07" U	13,567.53	No	02 January 2022
325	Sastro Mulyono	2.26	2.26	Ds. Boncah Kesuma, Kec. Kabun, Kab. Rokan Hulu, Riau	100° 43' 8.34" E	0° 29' 54.22" U	18,524.51	No	02 January 2022
326	Firdiansyah	1.88	1.88	Ds. Boncah Kesuma, Kec. Kabun, Kab. Rokan Hulu, Riau	100° 43' 6.14" E	0° 29' 54.56" U	18,792.59	No	02 January 2022
327	Suharto	1.73	1.73	Ds. Boncah Kesuma, Kec. Kabun, Kab. Rokan Hulu, Riau	100° 43' 4.18" E	0° 29' 54.61" U	14,357.04	No	02 January 2022
328	Nur cholis	2.08	2.08	Ds. Boncah Kesuma, Kec. Kabun, Kab. Rokan Hulu, Riau	100° 43' 12.73" E	0° 29' 54.08" U	25,967.81	No	02 January 2022
329	Muhamad zaenal arifin	2.13	2.13	Ds. Boncah Kesuma, Kec. Kabun, Kab. Rokan Hulu, Riau	100° 43' 14.78" E	0° 29' 54.16" U	24,275.35	No	02 January 2022
330	Rustam	2.31	2.31	Ds. Boncah Kesuma, Kec. Kabun, Kab. Rokan Hulu, Riau	100° 43' 16.96" E	0° 29' 54.13" U	3,920.82	No	02 January 2022
331	Iksan	2.49	2.49	Ds. Boncah Kesuma, Kec. Kabun, Kab. Rokan Hulu, Riau	100° 43' 21.25" E	0° 29' 54.03" U	21,867.70	No	02 January 2022
332	M.irfan zulfansyah	2.42	2.42	Ds. Boncah Kesuma, Kec. Kabun, Kab. Rokan Hulu, Riau	100° 43' 56.04" E	0° 29' 55.13" U	45,436.06	No	02 January 2022
333	H Misyono	1.94	1.94	Ds. Boncah Kesuma, Kec. Kabun, Kab. Rokan Hulu, Riau	100° 43' 53.57" E	0° 29' 54.65" U	44,558.48	No	02 January 2022
334	Nasehudin	1.94	1.94	Ds. Boncah Kesuma, Kec. Kabun, Kab. Rokan Hulu, Riau	100° 43' 51.41" E	0° 29' 54.65" U	39,657.41	No	02 January 2022

335	Iksan	2.00	2.00	Ds. Boncah Kesuma, Kec. Kabun, Kab. Rokan Hulu, Riau	100° 43' 49.25" E	0° 29' 54.53" U	33,730.17	No	02 January 2022
336	Sri yati	2.07	2.07	Ds. Boncah Kesuma, Kec. Kabun, Kab. Rokan Hulu, Riau	100° 43' 47.12" E	0° 29' 54.39" U	29,198.08	No	02 January 2022
337	Drs. Ahmad nuri	1.98	1.98	Ds. Boncah Kesuma, Kec. Kabun, Kab. Rokan Hulu, Riau	100° 43' 44.96" E	0° 29' 54.62" U	20,900.52	No	02 January 2022
338	Tri may subagya	2.00	2.00	Ds. Boncah Kesuma, Kec. Kabun, Kab. Rokan Hulu, Riau	100° 43' 42.81" E	0° 29' 54.59" U	23,768.47	No	02 January 2022
339	Rustaman	2.17	2.17	Ds. Boncah Kesuma, Kec. Kabun, Kab. Rokan Hulu, Riau	100° 43' 40.62" E	0° 29' 54.16" U	23,184.41	No	02 January 2022
340	Sudiarto	2.19	2.19	Ds. Boncah Kesuma, Kec. Kabun, Kab. Rokan Hulu, Riau	100° 43' 38.53" E	0° 29' 54.15" U	36,261.04	No	02 January 2022
341	Solihat	2.06	2.06	Ds. Boncah Kesuma, Kec. Kabun, Kab. Rokan Hulu, Riau	100° 43' 36.37" E	0° 29' 54.38" U	36,959.07	No	02 January 2022
342	Tarmad	2.11	2.11	Ds. Boncah Kesuma, Kec. Kabun, Kab. Rokan Hulu, Riau	100° 43' 34.23" E	0° 29' 54.39" U	32,427.17	No	02 January 2022
343	Ismail	2.09	2.09	Ds. Boncah Kesuma, Kec. Kabun, Kab. Rokan Hulu, Riau	100° 43' 32.08" E	0° 29' 54.47" U	24,599.82	No	02 January 2022
344	Hamdani	2.16	2.16	Ds. Boncah Kesuma, Kec. Kabun, Kab. Rokan Hulu, Riau	100° 43' 29.9" E	0° 29' 54.39" U	6,448.30	No	02 January 2022
345	Abidin	2.14	2.14	Ds. Boncah Kesuma, Kec. Kabun, Kab. Rokan Hulu, Riau	100° 43' 27.71" E	0° 29' 54.41" U	28,118.95	No	02 January 2022
346	Muhaimin	2.03	2.03	Ds. Boncah Kesuma, Kec. Kabun, Kab. Rokan Hulu, Riau	100° 43' 25.59" E	0° 29' 54.5" U	23,079.83	No	02 January 2022
347	Slamet	2.23	2.23	Ds. Boncah Kesuma, Kec. Kabun, Kab. Rokan Hulu, Riau	100° 43' 23.48" E	0° 29' 54.17" U	29,258.59	No	02 January 2022
348	Suwarno	2.20	2.20	Ds. Boncah Kesuma, Kec. Kabun, Kab. Rokan Hulu, Riau	100° 43' 13.43" E	0° 30' 2.71" U	27,367.18	No	02 January 2022
349	Suroto	1.73	1.73	Ds. Boncah Kesuma, Kec. Kabun, Kab. Rokan Hulu, Riau	100° 43' 16.65" E	0° 30' 2.76" U	22,656.03	No	02 January 2022
350	Marinah	1.82	1.82	Ds. Boncah Kesuma, Kec. Kabun, Kab. Rokan Hulu, Riau	100° 43' 19.58" E	0° 30' 2.78" U	30,436.88	No	02 January 2022
351	Kanipah	2.05	2.05	Ds. Boncah Kesuma, Kec. Kabun, Kab. Rokan Hulu, Riau	100° 43' 22.8" E	0° 30' 2.78" U	34,932.96	No	02 January 2022
352	Ari	1.95	1.95	Ds. Boncah Kesuma, Kec. Kabun, Kab. Rokan Hulu, Riau	100° 43' 29.36" E	0° 30' 2.76" U	40,114.21	No	02 January 2022
353	Sipahutar	1.95	1.95	Ds. Boncah Kesuma, Kec. Kabun, Kab. Rokan Hulu, Riau	100° 43' 32.59" E	0° 30' 2.74" U	37,878.01	No	02 January 2022
354	Hj.Suwarni	1.94	1.94	Ds. Boncah Kesuma, Kec. Kabun, Kab. Rokan Hulu, Riau	100° 43' 35.8" E	0° 30' 2.72" U	38,853.37	No	02 January 2022
355	H Nur Hasan Basori	1.99	1.99	Ds. Boncah Kesuma, Kec. Kabun, Kab. Rokan Hulu, Riau	100° 43' 39.04" E	0° 30' 2.71" U	24,738.85	No	02 January 2022
356	Sugiarto	1.95	1.95	Ds. Boncah Kesuma, Kec. Kabun, Kab. Rokan Hulu, Riau	100° 43' 42.28" E	0° 30' 2.69" U	35,305.10	No	02 January 2022
357	Saifudin	1.97	1.97	Ds. Boncah Kesuma, Kec. Kabun, Kab. Rokan Hulu, Riau	100° 43' 45.48" E	0° 30' 2.68" U	33,811.84	No	02 January 2022
358	Setiono	2.03	2.03	Ds. Boncah Kesuma, Kec. Kabun, Kab. Rokan Hulu, Riau	100° 43' 48.74" E	0° 30' 2.66" U	38,755.91	No	02 January 2022
359	Khairum	1.94	1.94	Ds. Boncah Kesuma, Kec. Kabun, Kab. Rokan Hulu, Riau	100° 43' 51.97" E	0° 30' 2.64" U	29,570.28	No	02 January 2022
360	Drs. Ahmad nuri	2.02	2.02	Ds. Boncah Kesuma, Kec. Kabun, Kab. Rokan Hulu, Riau	100° 43' 55.18" E	0° 30' 2.63" U	22,851.86	No	02 January 2022
361	Durajat	2.58	2.58	Ds. Boncah Kesuma, Kec. Kabun, Kab. Rokan Hulu, Riau	100° 43' 59.58" E	0° 30' 3.57" U	27,680.10	No	02 January 2022
362	Solatin	2.24	2.24	Ds. Boncah Kesuma, Kec. Kabun, Kab. Rokan Hulu, Riau	100° 44' 5.83" E	0° 30' 4.75" U	36,570.12	No	02 January 2022
363	Ismail	2.41	2.41	Ds. Boncah Kesuma, Kec. Kabun, Kab. Rokan Hulu, Riau	100° 44' 5.66" E	0° 30' 9.95" U	28,779.54	No	02 January 2022
364	SUHAR	2.03	2.03	Ds. Boncah Kesuma, Kec. Kabun, Kab. Rokan Hulu, Riau	100° 44' 1.65" E	0° 30' 9.16" U	76,405.52	No	02 January 2022
365	M.irfan zulfansyah	2.03	2.03	Ds. Boncah Kesuma, Kec. Kabun, Kab. Rokan Hulu, Riau	100° 43' 58.4" E	0° 30' 9.16" U	33,375.88	No	02 January 2022

366	Sera dwi mahmudah	2.02	2.02	Ds. Boncah Kesuma, Kec. Kabun, Kab. Rokan Hulu, Riau	100° 43' 55.15" E	0° 30' 9.14" U	35,253.32	No	02 January 2022
367	Usnan	1.92	1.92	Ds. Boncah Kesuma, Kec. Kabun, Kab. Rokan Hulu, Riau	100° 43' 51.97" E	0° 30' 9.13" U	29,047.64	No	02 January 2022
368	Sa'dullah	2.04	2.04	Ds. Boncah Kesuma, Kec. Kabun, Kab. Rokan Hulu, Riau	100° 43' 48.76" E	0° 30' 9.13" U	22,859.29	No	02 January 2022
369	Nanang Qosim	1.99	1.99	Ds. Boncah Kesuma, Kec. Kabun, Kab. Rokan Hulu, Riau	100° 43' 45.48" E	0° 30' 9.13" U	26,624.16	No	02 January 2022
370	Hendra saputra	1.96	1.96	Ds. Boncah Kesuma, Kec. Kabun, Kab. Rokan Hulu, Riau	100° 43' 42.25" E	0° 30' 9.13" U	32,339.11	No	02 January 2022
371	H Nur Hasan Basori	2.03	2.03	Ds. Boncah Kesuma, Kec. Kabun, Kab. Rokan Hulu, Riau	100° 43' 39" E	0° 30' 9.14" U	15,755.25	No	02 January 2022
372	Amirudin Nasution	1.96	1.96	Ds. Boncah Kesuma, Kec. Kabun, Kab. Rokan Hulu, Riau	100° 43' 35.76" E	0° 30' 9.15" U	26,262.95	No	02 January 2022
373	Dodik agung purwanto	2.00	2.00	Ds. Boncah Kesuma, Kec. Kabun, Kab. Rokan Hulu, Riau	100° 43' 29.32" E	0° 30' 9.17" U	32,650.95	No	02 January 2022
374	Wiwit sutriono	1.99	1.99	Ds. Boncah Kesuma, Kec. Kabun, Kab. Rokan Hulu, Riau	100° 43' 26.08" E	0° 30' 9.18" U	38,768.47	No	02 January 2022
375	Taufiqur rokhman	2.10	2.10	Ds. Boncah Kesuma, Kec. Kabun, Kab. Rokan Hulu, Riau	100° 43' 22.78" E	0° 30' 9.19" U	36,654.77	No	02 January 2022
376	M.efendi	1.89	1.89	Ds. Boncah Kesuma, Kec. Kabun, Kab. Rokan Hulu, Riau	100° 43' 19.56" E	0° 30' 9.22" U	37,111.42	No	02 January 2022
377	Sadi	1.84	1.84	Ds. Boncah Kesuma, Kec. Kabun, Kab. Rokan Hulu, Riau	100° 43' 16.57" E	0° 30' 9.25" U	26,402.60	No	02 January 2022
378	Muhammad	2.18	2.18	Ds. Boncah Kesuma, Kec. Kabun, Kab. Rokan Hulu, Riau	100° 43' 13.35" E	0° 30' 9.23" U	33,633.68	No	02 January 2022
379	Siswanto A	2.18	2.18	Ds. Boncah Kesuma, Kec. Kabun, Kab. Rokan Hulu, Riau	100° 43' 13.28" E	0° 30' 15.85" U	41,779.12	No	02 January 2022
380	Ahmad fadoli	1.87	1.87	Ds. Boncah Kesuma, Kec. Kabun, Kab. Rokan Hulu, Riau	100° 43' 16.48" E	0° 30' 15.83" U	38,423.71	No	02 January 2022
381	Wahyu suhendra	1.98	1.98	Ds. Boncah Kesuma, Kec. Kabun, Kab. Rokan Hulu, Riau	100° 43' 19.52" E	0° 30' 15.88" U	33,763.59	No	02 January 2022
382	Solikin	2.16	2.16	Ds. Boncah Kesuma, Kec. Kabun, Kab. Rokan Hulu, Riau	100° 43' 22.76" E	0° 30' 15.83" U	37,362.52	No	02 January 2022
383	Nasuri	2.08	2.08	Ds. Boncah Kesuma, Kec. Kabun, Kab. Rokan Hulu, Riau	100° 43' 26.06" E	0° 30' 15.83" U	31,919.04	No	02 January 2022
384	Bunawi	2.10	2.10	Ds. Boncah Kesuma, Kec. Kabun, Kab. Rokan Hulu, Riau	100° 43' 29.29" E	0° 30' 15.83" U	33,678.35	No	02 January 2022
385	Yon Afrizal	2.11	2.11	Ds. Boncah Kesuma, Kec. Kabun, Kab. Rokan Hulu, Riau	100° 43' 32.53" E	0° 30' 15.84" U	31,156.79	No	02 January 2022
386	Fitri Mawarni	2.10	2.10	Ds. Boncah Kesuma, Kec. Kabun, Kab. Rokan Hulu, Riau	100° 43' 35.74" E	0° 30' 15.85" U	32,236.28	No	02 January 2022
387	Usman	2.17	2.17	Ds. Boncah Kesuma, Kec. Kabun, Kab. Rokan Hulu, Riau	100° 43' 38.99" E	0° 30' 15.82" U	35,354.99	No	02 January 2022
388	Suliyadi	2.12	2.12	Ds. Boncah Kesuma, Kec. Kabun, Kab. Rokan Hulu, Riau	100° 43' 42.24" E	0° 30' 15.84" U	27,353.42	No	02 January 2022
389	Kalimah	2.16	2.16	Ds. Boncah Kesuma, Kec. Kabun, Kab. Rokan Hulu, Riau	100° 43' 45.47" E	0° 30' 15.84" U	28,238.06	No	02 January 2022
390	Heri kusdianto	2.10	2.10	Ds. Boncah Kesuma, Kec. Kabun, Kab. Rokan Hulu, Riau	100° 43' 51.96" E	0° 30' 15.91" U	37,704.38	No	02 January 2022
391	Tata sanjaya	2.14	2.14	Ds. Boncah Kesuma, Kec. Kabun, Kab. Rokan Hulu, Riau	100° 43' 55.16" E	0° 30' 15.9" U	35,786.45	No	02 January 2022
392	Parmin	2.14	2.14	Ds. Boncah Kesuma, Kec. Kabun, Kab. Rokan Hulu, Riau	100° 43' 58.4" E	0° 30' 15.92" U	29,958.66	No	02 January 2022
393	Sudarto	2.14	2.14	Ds. Boncah Kesuma, Kec. Kabun, Kab. Rokan Hulu, Riau	100° 44' 1.63" E	0° 30' 15.94" U	34,177.82	No	02 January 2022
394	Kiswanto	2.13	2.13	Ds. Boncah Kesuma, Kec. Kabun, Kab. Rokan Hulu, Riau	100° 44' 4.86" E	0° 30' 15.97" U	36,660.50	No	02 January 2022
395	Syahrudin Tanjung	2.01	2.01	Ds. Boncah Kesuma, Kec. Kabun, Kab. Rokan Hulu, Riau	100° 44' 8.01" E	0° 30' 16.11" U	22,660.11	No	02 January 2022
396	Edi lukito	1.71	1.71	Ds. Boncah Kesuma, Kec. Kabun, Kab. Rokan Hulu, Riau	100° 44' 7.94" E	0° 30' 22.53" U	33,628.91	No	02 January 2022

397	Siana	1.85	1.85	Ds. Boncah Kesuma, Kec. Kabun, Kab. Rokan Hulu, Riau	100° 44' 4.85" E	0° 30' 22.47" U	18,993.78	No	02 January 2022
398	Sumarno	1.87	1.87	Ds. Boncah Kesuma, Kec. Kabun, Kab. Rokan Hulu, Riau	100° 44' 1.63" E	0° 30' 22.46" U	34,003.03	No	02 January 2022
399	Kawi	1.86	1.86	Ds. Boncah Kesuma, Kec. Kabun, Kab. Rokan Hulu, Riau	100° 43' 58.4" E	0° 30' 22.44" U	38,233.25	No	02 January 2022
400	Slamet	1.86	1.86	Ds. Boncah Kesuma, Kec. Kabun, Kab. Rokan Hulu, Riau	100° 43' 55.16" E	0° 30' 22.42" U	33,166.24	No	02 January 2022
401	Rifa'i	1.86	1.86	Ds. Boncah Kesuma, Kec. Kabun, Kab. Rokan Hulu, Riau	100° 43' 51.93" E	0° 30' 22.4" U	24,329.14	No	02 January 2022
402	Nasehudin	1.85	1.85	Ds. Boncah Kesuma, Kec. Kabun, Kab. Rokan Hulu, Riau	100° 43' 48.7" E	0° 30' 22.38" U	32,210.69	No	02 January 2022
403	Depot hutapea	1.86	1.86	Ds. Boncah Kesuma, Kec. Kabun, Kab. Rokan Hulu, Riau	100° 43' 45.46" E	0° 30' 22.36" U	30,744.53	No	02 January 2022
404	Herryanto	1.86	1.86	Ds. Boncah Kesuma, Kec. Kabun, Kab. Rokan Hulu, Riau	100° 43' 42.23" E	0° 30' 22.34" U	35,002.47	No	02 January 2022
405	Erizal M.arsyad	1.86	1.86	Ds. Boncah Kesuma, Kec. Kabun, Kab. Rokan Hulu, Riau	100° 43' 38.99" E	0° 30' 22.32" U	30,144.72	No	02 January 2022
406	Royan aryanto	1.85	1.85	Ds. Boncah Kesuma, Kec. Kabun, Kab. Rokan Hulu, Riau	100° 43' 35.75" E	0° 30' 22.3" U	42,781.26	No	02 January 2022
407	Fadil Al sahap	1.85	1.85	Ds. Boncah Kesuma, Kec. Kabun, Kab. Rokan Hulu, Riau	100° 43' 32.52" E	0° 30' 22.27" U	32,945.81	No	02 January 2022
408	Irwan	1.85	1.85	Ds. Boncah Kesuma, Kec. Kabun, Kab. Rokan Hulu, Riau	100° 43' 29.29" E	0° 30' 22.25" U	28,523.11	No	02 January 2022
409	Basrani	1.84	1.84	Ds. Boncah Kesuma, Kec. Kabun, Kab. Rokan Hulu, Riau	100° 43' 26.05" E	0° 30' 22.23" U	37,804.04	No	02 January 2022
410	Endang suzana	1.90	1.90	Ds. Boncah Kesuma, Kec. Kabun, Kab. Rokan Hulu, Riau	100° 43' 22.77" E	0° 30' 22.22" U	30,444.50	No	02 January 2022
411	mhd al fajri	2.00	2.00	Ds. Boncah Kesuma, Kec. Kabun, Kab. Rokan Hulu, Riau	100° 43' 19.47" E	0° 30' 22.43" U	26,701.64	No	02 January 2022
412	Sumanto	1.73	1.73	Ds. Boncah Kesuma, Kec. Kabun, Kab. Rokan Hulu, Riau	100° 43' 16.4" E	0° 30' 22.36" U	31,796.47	No	02 January 2022
413	Solikin	2.09	2.09	Ds. Boncah Kesuma, Kec. Kabun, Kab. Rokan Hulu, Riau	100° 43' 13.24" E	0° 30' 22.34" U	27,204.63	No	02 January 2022
414	Mariyono	2.13	2.13	Ds. Boncah Kesuma, Kec. Kabun, Kab. Rokan Hulu, Riau	100° 43' 13.2" E	0° 30' 28.76" U	31,092.32	No	02 January 2022
415	Rakup	1.74	1.74	Ds. Boncah Kesuma, Kec. Kabun, Kab. Rokan Hulu, Riau	100° 43' 16.35" E	0° 30' 28.82" U	35,816.47	No	02 January 2022
416	saiin musa	2.17	2.17	Ds. Boncah Kesuma, Kec. Kabun, Kab. Rokan Hulu, Riau	100° 43' 22.76" E	0° 30' 28.66" U	31,149.89	No	02 January 2022
417	Fatulloh	2.12	2.12	Ds. Boncah Kesuma, Kec. Kabun, Kab. Rokan Hulu, Riau	100° 43' 26.04" E	0° 30' 28.66" U	20,663.67	No	02 January 2022
418	Supardi	2.10	2.10	Ds. Boncah Kesuma, Kec. Kabun, Kab. Rokan Hulu, Riau	100° 43' 29.28" E	0° 30' 28.67" U	41,416.55	No	02 January 2022
419	Ahmad hamdani	2.09	2.09	Ds. Boncah Kesuma, Kec. Kabun, Kab. Rokan Hulu, Riau	100° 43' 32.52" E	0° 30' 28.68" U	37,225.92	No	02 January 2022
420	Nur kholiq	2.08	2.08	Ds. Boncah Kesuma, Kec. Kabun, Kab. Rokan Hulu, Riau	100° 43' 35.75" E	0° 30' 28.7" U	42,196.47	No	02 January 2022
421	sudiaman s	2.07	2.07	Ds. Boncah Kesuma, Kec. Kabun, Kab. Rokan Hulu, Riau	100° 43' 38.99" E	0° 30' 28.71" U	38,253.04	No	02 January 2022
422	Ismail	2.09	2.09	Ds. Boncah Kesuma, Kec. Kabun, Kab. Rokan Hulu, Riau	100° 43' 42.24" E	0° 30' 28.73" U	36,079.51	No	02 January 2022
423	Nazaruddin	2.03	2.03	Ds. Boncah Kesuma, Kec. Kabun, Kab. Rokan Hulu, Riau	100° 43' 45.48" E	0° 30' 28.72" U	27,981.99	No	02 January 2022
424	Darso	2.05	2.05	Ds. Boncah Kesuma, Kec. Kabun, Kab. Rokan Hulu, Riau	100° 43' 48.69" E	0° 30' 28.74" U	42,238.33	No	02 January 2022
425	Paino	2.04	2.04	Ds. Boncah Kesuma, Kec. Kabun, Kab. Rokan Hulu, Riau	100° 43' 51.92" E	0° 30' 28.75" U	30,521.96	No	02 January 2022
426	Joni Putra	2.04	2.04	Ds. Boncah Kesuma, Kec. Kabun, Kab. Rokan Hulu, Riau	100° 43' 55.16" E	0° 30' 28.77" U	38,233.07	No	02 January 2022
427	Arlen	2.03	2.03	Ds. Boncah Kesuma, Kec. Kabun, Kab. Rokan Hulu, Riau	100° 43' 58.39" E	0° 30' 28.78" U	34,367.93	No	02 January 2022

428	Paino	2.02	2.02	Ds. Boncah Kesuma, Kec. Kabun, Kab. Rokan Hulu, Riau	100° 44' 1.63" E	0° 30' 28.78" U	37,237.07	No	02 January 2022
429	Ahmad Fauzan	2.01	2.01	Ds. Boncah Kesuma, Kec. Kabun, Kab. Rokan Hulu, Riau	100° 44' 4.82" E	0° 30' 27.1" U	15,443.03	No	02 January 2022
430	Sarman	3.50	3.50	Ds. Boncah Kesuma, Kec. Kabun, Kab. Rokan Hulu, Riau	100° 44' 3.98" E	0° 30' 32.2" U	27,590.22	No	02 January 2022
431	Sukisno	1.94	1.94	Ds. Boncah Kesuma, Kec. Kabun, Kab. Rokan Hulu, Riau	100° 43' 58.38" E	0° 30' 35.24" U	35,430.19	No	02 January 2022
432	Rudi	1.96	1.96	Ds. Boncah Kesuma, Kec. Kabun, Kab. Rokan Hulu, Riau	100° 43' 55.16" E	0° 30' 35.27" U	3,593.54	No	02 January 2022
433	Tariman	1.96	1.96	Ds. Boncah Kesuma, Kec. Kabun, Kab. Rokan Hulu, Riau	100° 43' 51.92" E	0° 30' 35.27" U	32,501.57	No	02 January 2022
434	Yatani	1.96	1.96	Ds. Boncah Kesuma, Kec. Kabun, Kab. Rokan Hulu, Riau	100° 43' 48.69" E	0° 30' 35.27" U	42,749.19	No	02 January 2022
435	Suwito	1.90	1.90	Ds. Boncah Kesuma, Kec. Kabun, Kab. Rokan Hulu, Riau	100° 43' 45.51" E	0° 30' 35.25" U	37,865.29	No	02 January 2022
436	Darmo	2.00	2.00	Ds. Boncah Kesuma, Kec. Kabun, Kab. Rokan Hulu, Riau	100° 43' 42.28" E	0° 30' 35.26" U	40,187.88	No	02 January 2022
437	M.sahlan	1.96	1.96	Ds. Boncah Kesuma, Kec. Kabun, Kab. Rokan Hulu, Riau	100° 43' 39" E	0° 30' 35.26" U	37,093.32	No	02 January 2022
438	Muhammad Ropa'i	1.95	1.95	Ds. Boncah Kesuma, Kec. Kabun, Kab. Rokan Hulu, Riau	100° 43' 35.76" E	0° 30' 35.26" U	38,882.09	No	02 January 2022
439	Edi saputra	1.95	1.95	Ds. Boncah Kesuma, Kec. Kabun, Kab. Rokan Hulu, Riau	100° 43' 32.52" E	0° 30' 35.25" U	36,252.35	No	02 January 2022
440	Hj.Wahini	1.95	1.95	Ds. Boncah Kesuma, Kec. Kabun, Kab. Rokan Hulu, Riau	100° 43' 29.28" E	0° 30' 35.25" U	37,382.11	No	02 January 2022
441	Hj.Wahini	1.96	1.96	Ds. Boncah Kesuma, Kec. Kabun, Kab. Rokan Hulu, Riau	100° 43' 26.03" E	0° 30' 35.24" U	36,260.46	No	02 January 2022
442	Rudianto	2.03	2.03	Ds. Boncah Kesuma, Kec. Kabun, Kab. Rokan Hulu, Riau	100° 43' 22.71" E	0° 30' 35.25" U	30,568.64	No	02 January 2022
443	Riswan H	1.98	1.98	Ds. Boncah Kesuma, Kec. Kabun, Kab. Rokan Hulu, Riau	100° 43' 19.42" E	0° 30' 35.31" U	4,583.44	No	02 January 2022
444	Susilo	1.82	1.82	Ds. Boncah Kesuma, Kec. Kabun, Kab. Rokan Hulu, Riau	100° 43' 16.36" E	0° 30' 35.34" U	33,108.18	No	02 January 2022
445	Sukadi	2.15	2.15	Ds. Boncah Kesuma, Kec. Kabun, Kab. Rokan Hulu, Riau	100° 43' 13.18" E	0° 30' 35.29" U	6,643.79	No	02 January 2022
446	Supardi	2.10	2.10	Ds. Boncah Kesuma, Kec. Kabun, Kab. Rokan Hulu, Riau	100° 43' 13.15" E	0° 30' 41.81" U	27,232.45	No	02 January 2022
447	Achmad riyanto	1.86	1.86	Ds. Boncah Kesuma, Kec. Kabun, Kab. Rokan Hulu, Riau	100° 43' 16.38" E	0° 30' 41.84" U	27,615.48	No	02 January 2022
448	Doto	1.90	1.90	Ds. Boncah Kesuma, Kec. Kabun, Kab. Rokan Hulu, Riau	100° 43' 19.42" E	0° 30' 41.83" U	15,621.73	No	02 January 2022
449	Sukisno	2.19	2.19	Ds. Boncah Kesuma, Kec. Kabun, Kab. Rokan Hulu, Riau	100° 43' 22.67" E	0° 30' 41.79" U	28,530.22	No	02 January 2022
450	Rasemi	2.10	2.10	Ds. Boncah Kesuma, Kec. Kabun, Kab. Rokan Hulu, Riau	100° 43' 26" E	0° 30' 41.81" U	26,914.14	No	02 January 2022
451	Ponijo	2.16	2.16	Ds. Boncah Kesuma, Kec. Kabun, Kab. Rokan Hulu, Riau	100° 43' 29.27" E	0° 30' 41.88" U	31,782.91	No	02 January 2022
452	Ribut Bangun Purba	2.14	2.14	Ds. Boncah Kesuma, Kec. Kabun, Kab. Rokan Hulu, Riau	100° 43' 32.5" E	0° 30' 41.91" U	26,796.34	No	02 January 2022
453	Sukri	2.10	2.10	Ds. Boncah Kesuma, Kec. Kabun, Kab. Rokan Hulu, Riau	100° 43' 36.31" E	0° 30' 40.95" U	24,488.66	No	02 January 2022
454	Wiwit sutriono	2.09	2.09	Ds. Boncah Kesuma, Kec. Kabun, Kab. Rokan Hulu, Riau	100° 43' 40.72" E	0° 30' 40.93" U	30,432.58	No	02 January 2022
455	Kasdi	2.05	2.05	Ds. Boncah Kesuma, Kec. Kabun, Kab. Rokan Hulu, Riau	100° 43' 45.08" E	0° 30' 40.95" U	41,164.49	No	02 January 2022
456	Edi Lukito	2.07	2.07	Ds. Boncah Kesuma, Kec. Kabun, Kab. Rokan Hulu, Riau	100° 43' 49.42" E	0° 30' 40.95" U	45,253.74	No	02 January 2022
457	Rudianto	2.23	2.23	Ds. Boncah Kesuma, Kec. Kabun, Kab. Rokan Hulu, Riau	100° 43' 54.2" E	0° 30' 40.48" U	22,254.76	No	02 January 2022
Total		917.38	917.38				12,802,821.58		

Note : *) Period data started from January – December 2022

PT TUV Rheinland Indonesia is member of TÜV Rheinland Group, a global leader in independent testing and assessment services. Established in 1872, TÜV Rheinland Group has over 130 years of experience in providing various types of certifications as well as technical services for over 360 locations in 62 countries worldwide.

The audit team for the audit consists of the following :

Audit Team	Role / Area of Requirement	Qualification and Experience
Ade Sudiana	Auditor team leader - Best Agricultural Practices, Environment, OHS, HCV, SCCS and Legal	<ul style="list-style-type: none"> • He has attended some trainings such as i.e <p>Lead Auditor course - Neville Clark; ISO 9001:2015 (2016), Awareness training of ISO 9001, 14001 and 18001, inhouse training of ISO 19011 and ISPO, Training of Assesor for Sustainability Natural Forest Management (SFM) by The Indonesian Ecolabelling Institute (2008), Training of Auditor for Sustainability Forest Management By Center for Educational and Training of Forestry, Department of Forestry (2010), Examination of competency for auditor of Sustainability Forest Management by Personal Certification Body-Rhino (2014), Training of Auditor For ISPO (2016) by ISPO Comission, Training of Lead Auditor for RSPO (2016) by Pro Forest and Daemeter, Training of Lead Auditor for SCCS (2017) by David Ogg (Refresh training in 2020 by David Ogg).</p> <ul style="list-style-type: none"> • He has work experience such as i.e <p>Consultant and Trainer of : Quality Management System (ISO 9001), Environment Management System (ISO 14001), Safety Management System (SMK3/ OHSAS 18001), ISPO (Indonesian Sustainable Palm Oil), Consultant and trainer in PT FOCUS (2008-2016) ; Auditor of SFM in PT Forestcitra Sejahtera (2008-2016); Auditor of SFM, RSPO and ISPO in PT TUV Rheinland Indonesia (2016-now)</p>
Mohamad Amarullah	Auditor – Best Agricultural Practices, Social	<ul style="list-style-type: none"> • He has attended some trainings such as i.e <p>ISPO Lead auditor, RSPO Lead Auditor, RSPO Supply Chain Lead Auditor, ISO 17021, ISO 17065, HCV, ISO 9001, ISO 19011, ISO 14001 and SA-8000</p> <ul style="list-style-type: none"> • He has work experience such as i.e <p>RSPO, ISPO Auditor at PT TUV Rheinland Indonesia, LA for RSPO, ISPO and MSPO Scheme at PT Mutu Agung Lestari, Agronomist and Research Assistant at PT Applied Agricultural Resources Indonesia, business development manager at One point Health Laboratory Sdn. Bhd. And Research Assistant Universiti Putera Malaysia</p>
Budi Setiawan	Auditor – Environment, GHG and Legal	<ul style="list-style-type: none"> • He has attended some trainings such as i.e <p>Indonesian Sustainable Palm Oil (ISPO) Lead Auditor Course by ISPO Comission; Quality Management System (QMS) Auditor/Lead Auditor by IRCA (ISO 9001:2008); Environmental Management Systems</p>

Audit Team	Role / Area of Requirement	Qualification and Experience
		Auditor/Lead Auditor Conversion Training by IRCA (ISO 14001:2004); Calculation of Green House Gas at Palm Oil Plantation by ISPO Commision; SVLK Auditor Training by Ministry of Forestry; CoC Auditor by LEI; PUB and Café training by ministry of tourism; HCV Training; RSPO P&C and SCCS Training; AWS Training; CORSIA <ul style="list-style-type: none"> • He has work experience such as i.e Staff RSPO in PT MAS, Staff Planning & Analysis in PT Bakti Sukses Mandiri; PT Mutu Hijau Indonesia, Jakarta as Technical Manag-er (2015-2016) and HR and finance manager (2014-2015); Auditor in PT Mutu Hijau Indonesia (2010-2016), and Auditor in PT TUV Rheinland Indonesia (2016-present).
Wahyu	Auditor – Legal, Environment & OHS	<ul style="list-style-type: none"> • He has attended some trainings such as i.e RSPO Lead Auditor Course, Pro-Forest & Daemeter, Calculation of Green House Gas at Palm Oil Plantation, Komisi ISPO, ISPO Lead Auditor Course, Komisi ISPO, Verified Legal Compliance & Reduced Impact Logging Auditor Training, by Tropical Forest Foundation, SVLK Auditor Training, Ministry of Forestry, CoC Auditor – LEI, ISO 9001:2008, IRCA Approved Course, ISO 14001:2004, IRCA Approved Course • He has work experience such as i.e PT Carsurin, as QHSE Coordinator (2006 -2009), PT Mutu Hijau Indonesia, Jakarta as Technical Manager (2010-May 2014) and Auditor PT TUV Rhein-land Indonesia (May 2014-present)

PT TUV Rheinland Indonesia mengundang pemangku kepentingan untuk memberikan PT TUV Rheinland Indonesia invites stakeholders to provide comments (if any) on any following matters related to the site for Audit. Comments are only accepted within 30 days from the date of this letter and will be considered in the audit.

Comments that are requested to be treated confidential or to remain anonymous, please insert "CONFIDENTIAL" in the subject of your reply.

Commenters will need to include the details below in case we need to contact you for further clarification on any issues that were raised.

Name : **Ade Sudiana**
Position : **Lead Auditor**
Email address : **ade.sudiana@tuv.com**
Telp. Number : **021 – 579 44 579**

Comments must be sent to:

Certification Body :
PT TUV Rheinland Indonesia
Ade Suidana
Lead Auditor
Menara Karya 10th Floor
Jl. H.R. Rasuna Said Block X-5 Kav 1-2
Jakarta 12950
Tel : +62 21 – 579 44 579
Fax : +62 21 – 579 44 575
Email : ade.suidana.@tuv.com
Website: www.tuv.com

Auditee :
Koperasi Unit Desa Bangkit Usaha Makmur
Khoirum
Head of KUD BUM
Desa Boncah Kesuma, Kec. Kabun
Kab. Rokan Hulu, Riau
Tel : +62 813-7112-8507
Fax : -
Email : kudbum0922@gmail.com

Yours faithfully,



Dian S Soeminta
General Manager of Sustainability Assurance
PT TUV Rheinland Indonesia