

Tanggal : 22 Juni 2023

Notifikasi untuk Kegiatan Sertifikasi RSPO Milestone-B Koperasi Produsen Bumi Sawit Tamiang (RSPO Membership 1-0444-23-000-00, 20 April 2023)

Stakeholder yang terhormat,

PT Mutuagung Lestari akan melakukan sertifikasi (*Milestone-B*) terhadap Koperasi Produsen Bumi Sawit Tamiang yang berlokasi di Desa Harum Sari, Kecamatan Tamiang Hulu, Kabupaten Aceh Tamiang, Provinsi Aceh, Indonesia untuk memenuhi terhadap Standar Pekebun Swadaya RSPO Interpretasi Nasional Indonesia untuk Produksi Minyak Sawit Lestari 2020, disahkan oleh Dewan Gubernur RSPO pada tanggal 14 Februari 2022.

Koperasi Produsen Bumi Sawit Tamiang telah terdaftar di *PalmTrace IT platform* dengan *member ID* RSPO_PO1000015657 dan akan menjalani proses sertifikasi RSPO untuk keseluruhan area produksi dibawah manajemennya dalam upaya pemenuhan standar RSPO. PT Mutuagung Lestari merencanakan untuk melakukan proses penilaian pada tanggal **10 s.d 12 Agustus 2023**.

Nama <i>Group Manager</i>	Alamat <i>Group Manager</i>	Lokasi <i>ISH Group</i>	Referensi GPS	
			Garis Lintang	Garis Bujur
Suriya Saputra	Desa Harum Sari, Kecamatan Tamiang Hulu, Kabupaten Aceh Tamiang, Provinsi Aceh, Indonesia	Desa Serba, Kecamatan Bandar Pusaka, Kabupaten Aceh Tamiang, Provinsi Aceh, Indonesia. Kode Pos: 24478	4° 16' 9.975" LU	97° 56' 34.642" BT

Koperasi Produsen Bumi Sawit Tamiang adalah organisasi petani kelapa sawit yang dibentuk dan disahkan oleh Kementerian Hukum Dan Hak Asasi Manusia Pada Tanggal 23 Maret 2022 Nomor AHU-0003634.Ah.01.29 Tahun 2022. Koperasi ini beralamat di Jalan Munyng Keramat No. 21, Dusun Alur Hitam, Desa Serba, Kecamatan Bandar Pusaka, Kabupaten Aceh Tamiang Provinsi Aceh.

Koperasi Produsen Bumi Sawit tamiang dibentuk dengan tujuan menjadi forum bagi petani kelapa sawit untuk menerapkan prinsip-prinsip minyak sawit berkelanjutan (RSPO Independen Smallholder). Dalam mewujudkan tujuan ini, Koperasi Produsen Bumi Sawit Tamiang didukung berbagai pihak diantaranya :

1. Pemerintah Kabupaten Aceh Tamiang
2. Badan Pertanahan Kabupaten Aceh Tamiang
3. Dinas Pertanian Dan Perkebunan Kabupaten Aceh Tamiang
4. Pusat Unggulan Perkebunan Lestari Aceh Tamiang
5. Forum Konservasi Leuser
6. Inisiatif Dagang Hijau
7. Dan Beberapa Perusahaan Perkebunan Kelapa Sawit Seperti :
 - PT. Musim Mas
 - Socfin Indonesia
 - PT. Bumi Sama Ganda
 - PT Semadam
 - PT Pati Sari
 - PT. Koompasia Enviro Institute

Setia pihak berperan di bidangnya masing-masing untuk mendukung kepatuhan terhadap Prinsip Dan Kriteria RSPO bagi petani kecil mandiri. mulai dari legalitas hingga kepatuhan lingkungan.

Saat ini Koperasi Produsen Bumi Sawit Tamiang terdiri dari 532 petani, 785 persil tanah dengan total luas luas ±891 ha yang terbagi menjadi 11 cluster yaitu :

1. Klaster Subur Makmur
2. Cluster Jaya Tani
3. Cluster Pantai Jaya
4. Klaster Durian Sawit
5. Cluster Citra Karya
6. Cluster Aman Sejahtera

7. Cluster Tawar Bengi
8. Cluster Blangka Bersatu
9. Cluster Ingin Maju
10. Klaster Wonosari
11. Klaster Wonosari Keramat Jaya

Untuk meningkatkan kapasitas petani, koperasi produsen bumi sawit tamiang menyelenggarakan beberapa pelatihan seperti:

1. Pelatihan Praktik Pertanian Yang Baik
2. Pelatihan Kesadaran RSPO
3. Pelatihan Pembuatan Standar Operasi Prosedur
4. Pelatihan Auditor Internal
5. Audit Internal

List of Group Members Koperasi Produsen Bumi Sawit Tamiang

No	Name of Farmer	Location	GPS Reference		Area Summary (Ha)		Forecasted Annual FFB Production (MT)	Any Licenses/Yes No	Date of Join on the Group
			Latitude	Longitude	Total Certified Area	Planted Area			
1	Abbas AR 1	Sulum Village, Sekerak Sub District, Tamiang District, Aceh Province, Indonesia	4° 19' 15.68"E	97° 51' 17.389"N	0.34	0.34	6.08	No	09 Jul 2022
	Abbas AR 2	Sulum Village, Sekerak Sub District, Tamiang District, Aceh Province, Indonesia	4° 19' 6.642"E	97° 51' 22.248"N	0.51	0.51	9.23	No	09 Jul 2022
	Abbas AR 3	Sulum Village, Sekerak Sub District, Tamiang District, Aceh Province, Indonesia	4° 18' 45.732"E	97° 51' 20.397"N	0.90	0.90	16.20	No	09 Jul 2022
2	Abdul Hamid	Pengdam Village, Bandar Pusaka Sub District, Tamiang District, Aceh Province, Indonesia	4° 17' 46.853"E	97° 48' 49.416"N	2.52	2.52	45.36	No	09 Jul 2022
3	Abdul Hamid 1	Juar Village, Sekerak Sub District, Tamiang District, Aceh Province, Indonesia	4° 18' 28.966"E	97° 51' 44.225"N	1.43	1.43	25.77	No	09 Jul 2022
	Abdul Hamid 2	Juar Village, Sekerak Sub District, Tamiang District, Aceh Province, Indonesia	4° 18' 29.982"E	97° 51' 59.545"N	1.71	1.71	30.71	No	09 Jul 2022
4	Abdul Jalil	Sulum Village, Sekerak Sub District, Tamiang District, Aceh Province, Indonesia	4° 18' 10.710"E	97° 51' 2.717"N	0.97	0.97	17.48	No	09 Jul 2022
5	Abdul Karim Sembiring	Pengdam Village, Bandar Pusaka Sub District, Tamiang District, Aceh Province, Indonesia	4° 18' 20.625"E	97° 50' 16.995"N	0.91	0.91	16.38	No	09 Jul 2022
6	Abdul Malik 1	Sulum Village, Sekerak Sub District, Tamiang District, Aceh Province, Indonesia	4° 18' 50.937"E	97° 51' 3.393"N	0.49	0.49	8.90	No	09 Jul 2022
	Abdul Malik 2	Pengdam Village, Sekerak Sub District, Tamiang District, Aceh Province, Indonesia	4° 18' 26.365"E	97° 50' 53.880"N	0.54	0.54	9.73	No	09 Jul 2022
7	Abdul Rahman	Sulum Village, Sekerak Sub District, Tamiang District, Aceh Province, Indonesia	4° 20' 49.317"E	97° 51' 6.799"N	4.18	4.18	75.16	No	09 Jul 2022
8	Abdul Rani	Pantai Cempaka Village, Bandar Pusaka Sub District, Tamiang District, Aceh Province, Indonesia	4° 17' 9.753"E	97° 50' 40.335"N	3.77	3.77	67.86	No	09 Jul 2022
	Abdul Rasid 1	Juar Village, Sekerak Sub District, Tamiang District, Aceh Province, Indonesia	4° 18' 28.015"E	97° 51' 54.407"N	0.06	0.06	1.11	No	09 Jul 2022
	Abdul Rasid 2	Juar Village, Sekerak Sub District, Tamiang District, Aceh Province, Indonesia	4° 18' 30.202"E	97° 51' 54.540"N	0.22	0.22	3.95	No	09 Jul 2022
	Abdul Rasid 3	Juar Village, Sekerak Sub District, Tamiang District, Aceh Province, Indonesia	4° 18' 29.842"E	97° 52' 54.778"N	0.86	0.86	15.39	No	09 Jul 2022
10	Abdul Zamani	Pematang Duri Village, Sekerak Sub District, Tamiang District, Aceh Province, Indonesia	4° 18' 55.493"E	97° 52' 14.717"N	0.84	0.84	15.06	No	09 Jul 2022
11	Abdullah A	Pengdam Village, Bandar Pusaka Sub District, Tamiang District, Aceh Province, Indonesia	4° 18' 16.480"E	97° 51' 24.609"N	0.55	0.55	9.98	No	09 Jul 2022
12	Abdullah B	Sulum Village, Sekerak Sub District, Tamiang District, Aceh Province, Indonesia	4° 18' 34.368"E	97° 51' 41.181"N	0.23	0.23	4.14	No	09 Jul 2022
13	Abdullah C	Sulum Village, Sekerak Sub District, Tamiang District, Aceh Province, Indonesia	4° 18' 16.066"E	97° 51' 24.916"N	0.36	0.36	6.53	No	09 Jul 2022
14	Abdullah H	Juar Village, Sekerak Sub District, Tamiang District, Aceh Province, Indonesia	4° 18' 27.589"E	97° 52' 16.953"N	0.53	0.53	9.58	No	09 Jul 2022
	Abdullah H 1	Juar Village, Sekerak Sub District, Tamiang District, Aceh Province, Indonesia	4° 18' 22.457"E	97° 52' 3.895"N	0.85	0.85	15.26	No	09 Jul 2022
	Abdullah H 2	Juar Village, Sekerak Sub District, Tamiang District, Aceh Province, Indonesia	4° 18' 42.072"E	97° 52' 5.885"N	0.28	0.28	5.05	No	09 Jul 2022
	Abdullah H 3	Juar Village, Sekerak Sub District, Tamiang District, Aceh Province, Indonesia	4° 17' 35.613"E	97° 51' 36.164"N	1.07	1.07	19.26	No	09 Jul 2022
15	Abu Ali	Pengdam Village, Bandar Pusaka Sub District, Tamiang District, Aceh Province, Indonesia	4° 17' 55.361"E	97° 49' 23.837"N	1.01	1.01	18.09	No	09 Jul 2022
16	Abu Bakar 1	Sulum Village, Sekerak Sub District, Tamiang District, Aceh Province, Indonesia	4° 18' 56.262"E	97° 52' 5.230"N	1.25	1.25	23.58	No	09 Jul 2022
	Abu Bakar 2	Pantai Cempaka Village, Sekerak Sub District, Tamiang District, Aceh Province, Indonesia	4° 18' 22.242"E	97° 51' 23.899"N	1.58	1.58	30.21	No	09 Jul 2022
	Abu Samah 1	Pematang Duri Village, Sekerak Sub District, Tamiang District, Aceh Province, Indonesia	4° 17' 6.002"E	97° 53' 11.365"N	1.00	1.00	18.00	No	09 Jul 2022
	Abu Samah 2	Pematang Duri Village, Sekerak Sub District, Tamiang District, Aceh Province, Indonesia	4° 18' 28.575"E	97° 53' 20.131"N	4.00	4.00	72.00	No	09 Jul 2022
17	Abu Thalib	Pantai Cempaka Village, Bandar Pusaka Sub District, Tamiang District, Aceh Province, Indonesia	4° 17' 50.592"E	97° 50' 28.716"N	1.00	1.00	18.00	No	09 Jul 2022
18	Abuya	Pengdam Village, Bandar Pusaka Sub District, Tamiang District, Aceh Province, Indonesia	4° 18' 14.903"E	97° 50' 9.861"N	3.02	3.02	54.33	No	09 Jul 2022
19	Achmad Soetomo	Blang Kandis Village, Bandar Pusaka Sub District, Tamiang District, Aceh Province, Indonesia	4° 17' 20.877"E	97° 57' 38.490"N	0.68	0.68	12.29	No	09 Jul 2022
21	Adi Suria Dama	Blang Kandis Village, Bandar Pusaka Sub District, Tamiang District, Aceh Province, Indonesia	4° 19' 52.946"E	97° 57' 23.882"N	1.42	1.42	25.52	No	09 Jul 2022
22	Ahnan 1	Sulum Village, Sekerak Sub District, Tamiang District, Aceh Province, Indonesia	4° 18' 19.920"E	97° 51' 24.609"N	1.19	1.19	21.48	No	09 Jul 2022
	Ahnan 2	Sulum Village, Sekerak Sub District, Tamiang District, Aceh Province, Indonesia	4° 18' 22.242"E	97° 51' 23.899"N	1.58	1.58	30.21	No	09 Jul 2022
	Ahmad 1	Harum Sari Village, Tamiang Hulu Sub District, Tamiang District, Aceh Province, Indonesia	4° 17' 57.674"E	97° 54' 31.346"N	1.00	1.00	18.00	No	09 Jul 2022
	Ahmad 2	Wonosari Village, Tamiang Hulu Sub District, Tamiang District, Aceh Province, Indonesia	4° 18' 55.212"E	97° 52' 56.348"N	1.15	1.15	20.70	No	09 Jul 2022
	Agung Suhardi	Wonosari Village, Tamiang Hulu Sub District, Tamiang District, Aceh Province, Indonesia	4° 17' 57.667"E	97° 53' 12.344"N	1.80	1.80	32.40	No	09 Jul 2022
26	Agus Suhananto	Blang Kandis Village, Bandar Pusaka Sub District, Tamiang District, Aceh Province, Indonesia	4° 18' 13.356"E	97° 58' 36.095"N	0.39	0.39	7.01	No	09 Jul 2022
27	Ahmad 1	Sulum Village, Sekerak Sub District, Tamiang District, Aceh Province, Indonesia	4° 19' 6.827"E	97° 51' 15.824"N	0.08	0.08	1.40	No	09 Jul 2022
	Ahmad 2	Sulum Village, Sekerak Sub District, Tamiang District, Aceh Province, Indonesia	4° 18' 16.608"E	97° 51' 16.431"N	0.51	0.51	9.18	No	09 Jul 2022
	Ahmad 3	Sulum Village, Sekerak Sub District, Tamiang District, Aceh Province, Indonesia	4° 18' 19.865"E	97° 51' 20.812"N	0.65	0.65	11.70	No	09 Jul 2022
28	Ahmad 1	Juar Village, Sekerak Sub District, Tamiang District, Aceh Province, Indonesia	4° 18' 43.491"E	97° 51' 32.854"N	0.44	0.44	7.92	No	09 Jul 2022
	Ahmad 2	Pantai Cempaka Village, Bandar Pusaka Sub District, Tamiang District, Aceh Province, Indonesia	4° 18' 9.124"E	97° 52' 17.695"N	1.07	1.07	19.28	No	09 Jul 2022
29	Amul Mandah	Pengdam Village, Bandar Pusaka Sub District, Tamiang District, Aceh Province, Indonesia	4° 17' 44.480"E	97° 49' 32.382"N	0.42	0.42	7.56	No	09 Jul 2022
30	Abar	Aur Jambu Village, Bandar Pusaka Sub District, Tamiang District, Aceh Province, Indonesia	4° 18' 27.174"E	97° 58' 47.909"N	1.62	1.62	29.11	No	09 Jul 2022
31	Al Akbar 1	Bengkelang Village, Bandar Pusaka Sub District, Tamiang District, Aceh Province, Indonesia	4° 19' 10.832"E	97° 48' 33.247"N	1.50	1.50	27.00	No	09 Jul 2022
	Al Akbar 2	Baubudulang Village, Bandar Pusaka Sub District, Tamiang District, Aceh Province, Indonesia	4° 18' 51.388"E	97° 49' 16.640"N	0.30	0.30	5.40	No	09 Jul 2022
32	Al Badi	Pematang Duri Village, Sekerak Sub District, Tamiang District, Aceh Province, Indonesia	4° 18' 38.544"E	97° 52' 36.891"N	1.50	1.50	27.00	No	09 Jul 2022
33	Al Kasim 1	Bengkelang Village, Bandar Pusaka Sub District, Tamiang District, Aceh Province, Indonesia	4° 18' 41.361"E	97° 48' 49.495"N	1.00	1.00	18.00	No	09 Jul 2022
	Al Kasim 2	Bengkelang Village, Bandar Pusaka Sub District, Tamiang District, Aceh Province, Indonesia	4° 18' 23.450"E	97° 49' 30.103"N	2.78	2.78	50.88	No	09 Jul 2022
34	Al Sahil	Blang Kandis Village, Bandar Pusaka Sub District, Tamiang District, Aceh Province, Indonesia	4° 18' 19.880"E	97° 58' 56.549"N	1.42	1.42	25.50	No	09 Jul 2022
35	Al Supri	Wonosari Village, Tamiang Hulu Sub District, Tamiang District, Aceh Province, Indonesia	4° 18' 36.073"E	97° 54' 22.831"N	1.59	1.59	28.55	No	09 Jul 2022
36	Alyes	Pematang Duri Village, Sekerak Sub District, Tamiang District, Aceh Province, Indonesia	4° 18' 57.590"E	97° 52' 29.403"N	1.00	1.00	18.00	No	09 Jul 2022
37	Alwi	Blang Kandis Village, Bandar Pusaka Sub District, Tamiang District, Aceh Province, Indonesia	4° 19' 57.171"E	97° 57' 1.528"N	1.54	1.54	27.86	No	09 Jul 2022
38	Aminah A	Bengkelang Village, Bandar Pusaka Sub District, Tamiang District, Aceh Province, Indonesia	4° 18' 21.384"E	97° 49' 12.204"N	1.80	1.80	32.40	No	09 Jul 2022
	Aminah B 1	Juar Village, Sekerak Sub District, Tamiang District, Aceh Province, Indonesia	4° 17' 42.405"E	97° 51' 38.164"N	0.79	0.79	14.20	No	09 Jul 2022
	Aminah B 2	Juar Village, Sekerak Sub District, Tamiang District, Aceh Province, Indonesia	4° 18' 33.979"E	97° 51' 49.348"N	1.27	1.27	22.82	No	09 Jul 2022
40	Amin S	Harum Sari Village, Tamiang Hulu Sub District, Tamiang District, Aceh Province, Indonesia	4° 18' 33.923"E	97° 54' 59.928"N	2.00	2.00	36.00	No	09 Jul 2022
41	Anind 1	Pengdam Village, Bandar Pusaka Sub District, Tamiang District, Aceh Province, Indonesia	4° 18' 21.480"E	97° 49' 23.448"N	1.32	1.32	23.76	No	09 Jul 2022
	Anind 2	Pematang Duri Village, Sekerak Sub District, Tamiang District, Aceh Province, Indonesia	4° 18' 34.758"E	97° 52' 36.433"N	1.70	1.70	30.60	No	09 Jul 2022
	Anind 3	Pematang Duri Village, Sekerak Sub District, Tamiang District, Aceh Province, Indonesia	4° 18' 29.652"E	97° 52' 38.749"N	0.50	0.50	9.00	No	09 Jul 2022
43	Angkasa 1	Bengkelang Village, Bandar Pusaka Sub District, Tamiang District, Aceh Province, Indonesia	4° 18' 30.736"E	97° 49' 10.607"N	0.70	0.70	12.60	No	09 Jul 2022
	Angkasa 2	Bengkelang Village, Bandar Pusaka Sub District, Tamiang District, Aceh Province, Indonesia	4° 18' 33.309"E	97° 49' 13.516"N	0.71	0.71	12.83	No	09 Jul 2022
	Angkasa 3	Bengkelang Village, Bandar Pusaka Sub District, Tamiang District, Aceh Province, Indonesia	4° 18' 46.165"E	97° 49' 28.517"N	0.40	0.40	7.20	No	09 Jul 2022
	Angkasa 4	Bengkelang Village, Bandar Pusaka Sub District, Tamiang District, Aceh Province, Indonesia	4° 18' 26.483"E	97° 49' 5.455"N	1.00	1.00	18.00	No	09 Jul 2022
45	Anis Havelit 1	Bengkelang Village, Bandar Pusaka Sub District, Tamiang District, Aceh Province, Indonesia	4° 18' 35.484"E	97° 48' 43.940"N	0.40	0.40	7.20	No	09 Jul 2022
	Anis Havelit 2	Bengkelang Village, Bandar Pusaka Sub District, Tamiang District, Aceh Province, Indonesia	4° 18' 33.616"E	97° 48' 43.940"N	0.70	0.70	12.60	No	09 Jul 2022
46	Ano	Blang Kandis Village, Bandar Pusaka Sub District, Tamiang District, Aceh Province, Indonesia	4° 18' 5.693"E	97° 57' 40.805"N	1.16	1.16	20.96	No	09 Jul 2022
47	Arbayah 1	Juar Village, Sekerak Sub District, Tamiang District, Aceh Province, Indonesia	4° 17' 59.970"E	97° 51' 57.917"N	0.21	0.21	3.71	No	09 Jul 2022
	Arbayah 2	Juar Village, Sekerak Sub District, Tamiang District, Aceh Province, Indonesia	4° 17' 45.035"E	97° 51' 27.542"N	0.27	0.27	4.81	No	09 Jul 2022
	Ardan 1	Bengkelang Village, Bandar Pusaka Sub District, Tamiang District, Aceh Province, Indonesia	4° 17' 32.601"E	97° 51' 9.855"N	2.00	2.00	36.00	No	09 Jul 2022
	Ardan 2	Pantai Cempaka Village, Bandar Pusaka Sub District, Tamiang District, Aceh Province, Indonesia	4° 18' 12.003"E	97° 49' 7.051"N	0.65	0.65	11.70	No	09 Jul 2022
	Ardan 3	Baling Karang Village, Sekerak Sub District, Tamiang District, Aceh Province, Indonesia	4° 18' 36.005"E	97° 49' 25.983"N	4.00	4.00	72.00	No	09 Jul 2022
48	Arlin Effendi	Pantai Cempaka Village, Bandar Pusaka Sub District, Tamiang District, Aceh Province, Indonesia	4° 17' 32.973"E	97° 51' 23.884"N	0.84	0.84	15.12	No	09 Jul 2022
49	Armaniyah	Harum Sari Village, Tamiang Hulu Sub District, Tamiang District, Aceh Province, Indonesia	4° 18' 31.303"E	97° 54' 20.303"N	1.00	1.00	18.00	No	09 Jul 2022
50	Aminia	Pengdam Village, Bandar Pusaka Sub District, Tamiang District, Aceh Province, Indonesia	4° 17' 41.096"E	97° 50' 10.740"N	0.72	0.72	12.96	No	09 Jul 2022
51	Amia Elendi 1	Juar Village, Sekerak Sub District, Tamiang District, Aceh Province, Indonesia	4° 17' 59.772"E	97° 52' 1.947"N	0.13	0.13	2.36	No	09 Jul 2022
	Amia Elendi 2	Juar Village, Sekerak Sub District, Tamiang District, Aceh Province, Indonesia	4° 18' 59.571"E	97° 52' 3.052"N	0.15	0.15	2.70	No	09 Jul 2022
52	Asah	Bengkelang Village, Bandar Pusaka Sub District, Tamiang District, Aceh Province, Indonesia	4° 18' 36.044"E	97° 49' 6.419"N	0.60	0.60	10.80	No	09 Jul 2022
53	Asmah	Pengdam Village, Bandar Pusaka Sub District, Tamiang District, Aceh Province, Indonesia	4° 17' 57.322"E	97° 49' 12.906"N	2.01	2.01	36.16	No	09 Jul 2022
54	Asim	Bengkelang Village, Bandar Pusaka Sub District, Tamiang District, Aceh Province, Indonesia	4° 18' 40.790"E	97° 49' 28.355"N	1.04	1.04	18.72	No	09 Jul 2022
55	Badki 1	Pantai Cempaka Village, Bandar Pusaka Sub District, Tamiang District, Aceh Province, Indonesia	4° 17' 30.383"E	97° 50' 41.359"N	1.80	1.80	32.40	No	09 Jul 2022
	Badki 2	Bengkelang Village, Bandar Pusaka Sub District, Tamiang District, Aceh Province, Indonesia	4° 18' 21.887"E	97° 49' 5.601"N	2.00	2.00	36.00	No	09 Jul 2022
	Badki 3	Pematang Duri Village, Sekerak Sub District, Tamiang District, Aceh Province, Indonesia	4° 17' 33.580"E	97° 49' 19.580"N	0.39	0.39	7.04	No	09 Jul 2022
57	Bambang Hermanto	Wonosari Village, Tamiang Hulu Sub District, Tamiang District, Aceh Province, Indonesia	4° 18' 57.850"E	97° 52' 56.544"N	1.59	1.59	28.55	No	09 Jul 2022
	Bambang Pajit 1	Juar Village, Sekerak Sub District, Tamiang District, Aceh Province, Indonesia	4° 17' 42.262"E	97° 51' 32.296"N	0.32	0.32	5.76	No	09 Jul 2022
	Bambang Pajit 2	Juar Village, Sekerak Sub District, Tamiang District, Aceh Province, Indonesia	4° 17' 40.259"E	97° 51' 33.321"N	0.38	0.38	6.83	No	09 Jul 2022
	Bambang Pajit 3	Juar Village, Sekerak Sub District, Tamiang District, Aceh Province, Indonesia	4° 17' 39.538"E	97° 51' 30.056"N	0.07	0.07	1.24	No	09 Jul 2022
59	Bambang Susilo	Blang Kandis Village, Bandar Pusaka Sub District, Tamiang District, Aceh Province, Indonesia	4° 18' 11.443"E	97° 57' 26.587"N	1.16	1.16	20.89	No	09 Jul 2022
60	Banta Syah	Sulum Village, Sekerak Sub District, Tamiang District, Aceh Province, Indonesia	4° 19' 31.955"E	97° 51' 23.853"N	1.85	1.85	33.39	No	09 Jul 2022
61	Baimin 1	Wonosari Village, Tamiang Hulu Sub District, Tamiang District, Aceh Province, Indonesia	4° 18' 31.344"E	97° 54' 34.451"N	1.91	1.91	34.51	No	09 Jul 2022
	Baimin 2	Wonosari Village, Tamiang Hulu Sub District, Tamiang District, Aceh Province, Indonesia	4° 18' 31.319"E	97° 53' 42.725"N	0.80	0.80	14.40	No	09 Jul 2022
62	Basim	Blang Kandis Village, Bandar Pusaka Sub District, Tamiang District, Aceh Province, Indonesia	4° 18' 18.802"E	97° 57' 40.189"N	0.16	0.16	2.82	No	09 Jul 2022
63	Batahan	Pengdam Village, Bandar Pusaka Sub District, Tamiang District, Aceh Province, Indonesia	4° 18' 40.628"E	97° 50' 24.096"N	0.52	0.52	9.36	No	09 Jul 2022
64	Beni Iktan	Wonosari Village, Tamiang Hulu Sub District, Tamiang District, Aceh Province, Indonesia	4° 18' 3.146"E	97° 54' 14.					

No	Nama	Alamat	Latitude	Longitude	Luas (m²)	Luas (Ha)	Luas (Rm)	Status	Tgl. Pengesahan
84	Dicky Willadi	Wonosari Village, Tamiang Hulu Sub District, Tamiang District, Aceh Province, Indonesia	4° 14' 9.529" E	97° 54' 10.970" N	1.16	1.16	20.88	No	09 Juli 2022
85	Diki Hidayat	Pengdam Village, Bandar Pusaka Sub District, Tamiang District, Aceh Province, Indonesia	4° 17' 59.523" E	97° 49' 49.672" N	1.96	1.96	35.19	No	09 Juli 2022
	Drs. Abdul Muhalib 1	Rantau Birang Village, Bandar Pusaka Sub District, Tamiang District, Aceh Province, Indonesia	4° 16' 59.766" E	97° 52' 58.844" N	2.00	2.00	36.00	No	09 Juli 2022
86	Drs. Abdul Muhalib 2	Rantau Birang Village, Bandar Pusaka Sub District, Tamiang District, Aceh Province, Indonesia	4° 17' 15.498" E	97° 53' 5.989" N	2.21	2.21	39.78	No	09 Juli 2022
87	Drs. Abdul Muhalib 3	Sading Village, Tamiang Hulu Sub District, Tamiang District, Aceh Province, Indonesia	4° 16' 44.881" E	97° 56' 26.868" N	1.50	1.50	26.88	No	09 Juli 2022
88	Eko Ramadana	Harum Sari Village, Tamiang Hulu Sub District, Tamiang District, Aceh Province, Indonesia	4° 18' 36.767" E	97° 55' 13.115" N	1.50	1.50	27.00	No	09 Juli 2022
89	Eman Suondo 1	Wonosari Village, Tamiang Hulu Sub District, Tamiang District, Aceh Province, Indonesia	4° 14' 46.526" E	97° 54' 25.841" N	1.06	1.06	19.68	No	09 Juli 2022
90	Eman Suondo 2	Sulum Village, Sekera Sub District, Tamiang District, Aceh Province, Indonesia	4° 18' 47.501" E	97° 51' 19.255" N	0.05	0.05	0.96	No	09 Juli 2022
91	Endah Syah Putra	Sulum Village, Sekera Sub District, Tamiang District, Aceh Province, Indonesia	4° 19' 9.289" E	97° 51' 18.733" N	0.97	0.97	17.46	No	09 Juli 2022
92	Epi Supriadi	Wonosari Village, Tamiang Hulu Sub District, Tamiang District, Aceh Province, Indonesia	4° 14' 26.519" E	97° 53' 43.740" N	0.91	0.91	16.38	No	09 Juli 2022
93	Ernyanto	Pengdam Village, Bandar Pusaka Sub District, Tamiang District, Aceh Province, Indonesia	4° 17' 15.077" E	97° 51' 26.099" N	0.84	0.84	15.12	No	09 Juli 2022
94	Ermawati	Wonosari Village, Tamiang Hulu Sub District, Tamiang District, Aceh Province, Indonesia	4° 14' 16.031" E	97° 54' 13.249" N	0.77	0.77	13.86	No	09 Juli 2022
95	Fadiah	Pengdam Village, Bandar Pusaka Sub District, Tamiang District, Aceh Province, Indonesia	4° 18' 26.803" E	97° 52' 55.303" N	0.38	0.38	6.89	No	09 Juli 2022
96	Fahmi Andika	Pengdam Village, Bandar Pusaka Sub District, Tamiang District, Aceh Province, Indonesia	4° 18' 10.118" E	97° 49' 7.165" N	1.70	1.70	30.60	No	09 Juli 2022
97	Faisal Adami	Juar Village, Sekera Sub District, Tamiang District, Aceh Province, Indonesia	4° 18' 2.629" E	97° 49' 16.165" N	0.84	0.84	15.12	No	09 Juli 2022
98	Fandah	Juar Village, Sekera Sub District, Tamiang District, Aceh Province, Indonesia	4° 18' 3.336" E	97° 51' 54.558" N	0.51	0.51	9.16	No	09 Juli 2022
99	Fanhu Rofi	Pengdam Village, Bandar Pusaka Sub District, Tamiang District, Aceh Province, Indonesia	4° 18' 31.104" E	97° 49' 15.168" N	4.34	4.34	78.06	No	09 Juli 2022
100	Fery Fadi	Wonosari Village, Tamiang Hulu Sub District, Tamiang District, Aceh Province, Indonesia	4° 15' 2.430" E	97° 53' 18.128" N	1.60	1.60	28.77	No	09 Juli 2022
101	Fitri Hayqal	Baling Karang Village, Sekera Sub District, Tamiang District, Aceh Province, Indonesia	4° 19' 20.929" E	97° 48' 54.252" N	0.80	0.80	14.40	No	09 Juli 2022
102	Fria	Tanjung Gunung Village, Sekera Sub District, Tamiang District, Aceh Province, Indonesia	4° 17' 55.187" E	97° 52' 24.247" N	3.67	3.67	65.98	No	09 Juli 2022
103	Fisra Indira	Pengdam Village, Bandar Pusaka Sub District, Tamiang District, Aceh Province, Indonesia	4° 17' 42.647" E	97° 50' 3.239" N	1.24	1.24	22.32	No	09 Juli 2022
104	Gege	Harum Sari Village, Tamiang Hulu Sub District, Tamiang District, Aceh Province, Indonesia	4° 17' 32.800" E	97° 54' 34.242" N	1.00	1.00	18.00	No	09 Juli 2022
105	Gien	Blang Kandi Village, Bandar Pusaka Sub District, Tamiang District, Aceh Province, Indonesia	4° 14' 2.890" E	97° 52' 1.368" N	1.50	1.50	27.00	No	09 Juli 2022
106	H Abd Samud	Wonosari Village, Tamiang Hulu Sub District, Tamiang District, Aceh Province, Indonesia	4° 14' 2.890" E	97° 54' 12.922" N	0.44	0.44	7.92	No	09 Juli 2022
107	Halim Yusuf	Pengdam Village, Bandar Pusaka Sub District, Tamiang District, Aceh Province, Indonesia	4° 17' 53.095" E	97° 49' 48.252" N	1.62	1.62	29.16	No	09 Juli 2022
108	Hari Handoko	Pengdam Village, Bandar Pusaka Sub District, Tamiang District, Aceh Province, Indonesia	4° 18' 34.943" E	97° 50' 12.460" N	0.80	0.80	16.20	No	09 Juli 2022
109	Harida	Harum Sari Village, Tamiang Hulu Sub District, Tamiang District, Aceh Province, Indonesia	4° 14' 36.251" E	97° 55' 9.674" N	1.27	1.27	22.77	No	09 Juli 2022
110	Harris 1	Pengdam Village, Bandar Pusaka Sub District, Tamiang District, Aceh Province, Indonesia	4° 18' 37.200" E	97° 49' 42.736" N	0.44	0.44	7.83	No	09 Juli 2022
111	Harris 2	Bengkelang Village, Bandar Pusaka Sub District, Tamiang District, Aceh Province, Indonesia	4° 18' 42.599" E	97° 49' 7.897" N	1.48	1.48	26.94	No	09 Juli 2022
112	Harris 3	Bengkelang Village, Bandar Pusaka Sub District, Tamiang District, Aceh Province, Indonesia	4° 18' 44.287" E	97° 48' 28.251" N	1.54	1.54	27.77	No	09 Juli 2022
113	Hasan Bakri 1	Juar Village, Sekera Sub District, Tamiang District, Aceh Province, Indonesia	4° 18' 39.737" E	97° 48' 37.883" N	1.70	1.70	30.60	No	09 Juli 2022
114	Hasan Bakri 2	Juar Village, Sekera Sub District, Tamiang District, Aceh Province, Indonesia	4° 18' 34.066" E	97° 51' 50.113" N	0.86	0.86	15.43	No	09 Juli 2022
115	Hasan Rudi	Juar Village, Sekera Sub District, Tamiang District, Aceh Province, Indonesia	4° 17' 47.470" E	97° 51' 48.145" N	0.97	0.97	17.40	No	09 Juli 2022
116	Hasanuddin	Pantai Cempaka Village, Bandar Pusaka Sub District, Tamiang District, Aceh Province, Indonesia	4° 16' 48.326" E	97° 52' 3.335" N	1.13	1.13	20.28	No	09 Juli 2022
117	Hasanuddin A	Pantai Cempaka Village, Bandar Pusaka Sub District, Tamiang District, Aceh Province, Indonesia	4° 17' 19.634" E	97° 51' 58.971" N	0.17	0.17	3.06	No	09 Juli 2022
118	Hasanuddin C	Pematang Duri Village, Sekera Sub District, Tamiang District, Aceh Province, Indonesia	4° 18' 9.625" E	97° 52' 52.340" N	0.93	0.93	16.68	No	09 Juli 2022
119	Hasanuddin C 2	Pematang Duri Village, Sekera Sub District, Tamiang District, Aceh Province, Indonesia	4° 18' 3.992" E	97° 56' 19.500" N	1.30	1.30	23.45	No	09 Juli 2022
120	Hasanudin	Pematang Duri Village, Sekera Sub District, Tamiang District, Aceh Province, Indonesia	4° 18' 2.748" E	97° 53' 18.418" N	0.80	0.80	14.40	No	09 Juli 2022
121	Hayati	Pengdam Village, Bandar Pusaka Sub District, Tamiang District, Aceh Province, Indonesia	4° 18' 25.308" E	97° 51' 12.408" N	2.30	2.30	41.40	No	09 Juli 2022
122	Heri Sugianto 1	Harum Sari Village, Tamiang Hulu Sub District, Tamiang District, Aceh Province, Indonesia	4° 13' 21.210" E	97° 54' 43.348" N	0.53	0.53	9.54	No	09 Juli 2022
123	Heri Sugianto 2	Harum Sari Village, Tamiang Hulu Sub District, Tamiang District, Aceh Province, Indonesia	4° 13' 2.132" E	97° 54' 12.789" N	0.66	0.66	11.96	No	09 Juli 2022
124	Hieranio 1	Blang Kandi Village, Bandar Pusaka Sub District, Tamiang District, Aceh Province, Indonesia	4° 14' 19.103" E	97° 57' 57.482" N	0.71	0.71	12.85	No	09 Juli 2022
125	Hieranio 2	Blang Kandi Village, Bandar Pusaka Sub District, Tamiang District, Aceh Province, Indonesia	4° 14' 19.276" E	97° 57' 59.835" N	1.33	1.33	23.99	No	09 Juli 2022
126	Hierlia Sumarah 1	Wonosari Village, Tamiang Hulu Sub District, Tamiang District, Aceh Province, Indonesia	4° 17' 16.033" E	97° 54' 54.435" N	0.64	0.64	11.50	No	09 Juli 2022
127	Hierlia Sumarah 2	Harum Sari Village, Tamiang Hulu Sub District, Tamiang District, Aceh Province, Indonesia	4° 18' 18.297" E	97° 54' 30.331" N	3.00	3.00	54.00	No	09 Juli 2022
128	Hierlia Sumarah 3	Harum Sari Village, Tamiang Hulu Sub District, Tamiang District, Aceh Province, Indonesia	4° 18' 18.298" E	97° 54' 35.200" N	3.00	3.00	54.00	No	09 Juli 2022
129	Herman A	Pantai Cempaka Village, Bandar Pusaka Sub District, Tamiang District, Aceh Province, Indonesia	4° 17' 59.928" E	97° 50' 54.751" N	0.85	0.85	15.30	No	09 Juli 2022
130	Herman B 1	Bengkelang Village, Bandar Pusaka Sub District, Tamiang District, Aceh Province, Indonesia	4° 18' 41.480" E	97° 48' 46.596" N	0.60	0.60	10.80	No	09 Juli 2022
131	Herman B 2	Bengkelang Village, Bandar Pusaka Sub District, Tamiang District, Aceh Province, Indonesia	4° 18' 37.313" E	97° 48' 45.717" N	1.41	1.41	25.31	No	09 Juli 2022
132	Herman Supriadi 1	Juar Village, Sekera Sub District, Tamiang District, Aceh Province, Indonesia	4° 18' 33.400" E	97° 52' 8.898" N	0.79	0.79	14.16	No	09 Juli 2022
133	Herman Supriadi 2	Juar Village, Sekera Sub District, Tamiang District, Aceh Province, Indonesia	4° 18' 36.587" E	97° 52' 10.515" N	0.88	0.88	15.79	No	09 Juli 2022
134	Herman Supriadi 3	Juar Village, Sekera Sub District, Tamiang District, Aceh Province, Indonesia	4° 18' 44.991" E	97° 51' 53.897" N	1.43	1.43	25.74	No	09 Juli 2022
135	Hindun 1	Bengkelang Village, Bandar Pusaka Sub District, Tamiang District, Aceh Province, Indonesia	4° 18' 36.543" E	97° 48' 49.529" N	1.15	1.15	20.70	No	09 Juli 2022
136	Hindun 2	Bengkelang Village, Bandar Pusaka Sub District, Tamiang District, Aceh Province, Indonesia	4° 18' 32.336" E	97° 48' 40.532" N	1.60	1.60	28.80	No	09 Juli 2022
137	Hindun 3	Pengdam Village, Bandar Pusaka Sub District, Tamiang District, Aceh Province, Indonesia	4° 18' 29.887" E	97° 52' 20.703" N	1.08	1.08	19.62	No	09 Juli 2022
138	Huisni Karika Sembiring	Bengkelang Village, Bandar Pusaka Sub District, Tamiang District, Aceh Province, Indonesia	4° 18' 51.768" E	97° 49' 20.481" N	0.53	0.53	9.45	No	09 Juli 2022
139	Huisni N Hastin	Rantau Birang Village, Bandar Pusaka Sub District, Tamiang District, Aceh Province, Indonesia	4° 18' 7.997" E	97° 53' 16.000" N	0.77	0.77	13.85	No	09 Juli 2022
140	Idis Suandi 1	Rantau Birang Village, Bandar Pusaka Sub District, Tamiang District, Aceh Province, Indonesia	4° 18' 9.898" E	97° 53' 27.105" N	0.94	0.94	16.98	No	09 Juli 2022
141	Idis Suandi 2	Rantau Birang Village, Bandar Pusaka Sub District, Tamiang District, Aceh Province, Indonesia	4° 17' 55.166" E	97° 53' 37.291" N	0.88	0.88	17.61	No	09 Juli 2022
142	Idis Suandi 3	Pengdam Village, Bandar Pusaka Sub District, Tamiang District, Aceh Province, Indonesia	4° 18' 15.910" E	97° 49' 45.884" N	0.62	0.62	11.16	No	09 Juli 2022
143	Iyan	Pengdam Village, Bandar Pusaka Sub District, Tamiang District, Aceh Province, Indonesia	4° 17' 58.793" E	97° 48' 38.886" N	0.70	0.70	12.60	No	09 Juli 2022
144	Iyan	Pengdam Village, Bandar Pusaka Sub District, Tamiang District, Aceh Province, Indonesia	4° 18' 13.145" E	97° 50' 5.388" N	0.40	0.40	7.20	No	09 Juli 2022
145	Imanah 1	Bengkelang Village, Bandar Pusaka Sub District, Tamiang District, Aceh Province, Indonesia	4° 18' 41.407" E	97° 48' 40.407" N	1.40	1.40	25.20	No	09 Juli 2022
146	Imanah 2	Batubedulang Village, Bandar Pusaka Sub District, Tamiang District, Aceh Province, Indonesia	4° 18' 37.601" E	97° 49' 21.932" N	0.40	0.40	7.20	No	09 Juli 2022
147	Imanah 3	Batubedulang Village, Bandar Pusaka Sub District, Tamiang District, Aceh Province, Indonesia	4° 18' 22.351" E	97° 48' 21.833" N	0.71	0.71	12.84	No	09 Juli 2022
148	Indah Sari 1	Bengkelang Village, Bandar Pusaka Sub District, Tamiang District, Aceh Province, Indonesia	4° 18' 31.503" E	97° 48' 48.171" N	0.20	0.20	3.60	No	09 Juli 2022
149	Indah Sari 2	Bengkelang Village, Bandar Pusaka Sub District, Tamiang District, Aceh Province, Indonesia	4° 18' 36.343" E	97° 49' 14.118" N	0.40	0.40	7.20	No	09 Juli 2022
150	Indah Sari 3	Bengkelang Village, Bandar Pusaka Sub District, Tamiang District, Aceh Province, Indonesia	4° 18' 34.512" E	97° 48' 50.684" N	0.66	0.66	11.80	No	09 Juli 2022
151	Indra Gunawan 1	Harum Sari Village, Tamiang Hulu Sub District, Tamiang District, Aceh Province, Indonesia	4° 14' 29.253" E	97° 55' 26.857" N	0.72	0.72	12.92	No	09 Juli 2022
152	Indra Gunawan 2	Harum Sari Village, Tamiang Hulu Sub District, Tamiang District, Aceh Province, Indonesia	4° 14' 28.972" E	97° 55' 29.370" N	1.57	1.57	28.17	No	09 Juli 2022
153	Indra Gunawan 3	Pengdam Village, Bandar Pusaka Sub District, Tamiang District, Aceh Province, Indonesia	4° 18' 12.173" E	97° 50' 5.481" N	0.40	0.40	7.20	No	09 Juli 2022
154	Isnari	Kalyo Village, Tamiang Hulu Sub District, Tamiang District, Aceh Province, Indonesia	4° 18' 30.851" E	97° 55' 26.728" N	3.63	3.63	65.34	No	09 Juli 2022
155	Ityanto	Wonosari Village, Tamiang Hulu Sub District, Tamiang District, Aceh Province, Indonesia	4° 14' 35.893" E	97° 54' 41.804" N	1.20	1.20	21.64	No	09 Juli 2022
156	Iwan	Blang Kandi Village, Bandar Pusaka Sub District, Tamiang District, Aceh Province, Indonesia	4° 14' 48.459" E	97° 57' 52.023" N	0.01	0.01	0.10	No	09 Juli 2022
157	Iwan Syah Putra 2	Juar Village, Sekera Sub District, Tamiang District, Aceh Province, Indonesia	4° 18' 43.019" E	97° 51' 44.726" N	1.02	1.02	18.44	No	09 Juli 2022
158	Iwanahyah Putra	Sulum Village, Sekera Sub District, Tamiang District, Aceh Province, Indonesia	4° 18' 50.792" E	97° 51' 26.186" N	1.61	1.61	28.98	No	09 Juli 2022
159	Iyakh	Wonosari Village, Tamiang Hulu Sub District, Tamiang District, Aceh Province, Indonesia	4° 14' 53.447" E	97° 53' 52.993" N	1.00	1.00	18.00	No	09 Juli 2022
160	Iyandarsyah	Pantai Cempaka Village, Bandar Pusaka Sub District, Tamiang District, Aceh Province, Indonesia	4° 17' 59.962" E	97° 50' 58.357" N	0.80	0.80	14.40	No	09 Juli 2022
161	Ismail A	Pengdam Village, Bandar Pusaka Sub District, Tamiang District, Aceh Province, Indonesia	4° 18' 20.162" E	97° 49' 40.071" N	0.61	0.61	10.80	No	09 Juli 2022
162	Ismail B	Baling Karang Village, Sekera Sub District, Tamiang District, Aceh Province, Indonesia	4° 19' 20.595" E	97° 48' 58.972" N	2.24	2.24	40.32	No	09 Juli 2022
163	Ismail Hasim 1	Bengkelang Village, Bandar Pusaka Sub District, Tamiang District, Aceh Province, Indonesia	4° 18' 18.852" E	97° 49' 20.541" N	2.40	2.40	43.20	No	09 Juli 2022
164	Ismail Hasim 2	Bengkelang Village, Bandar Pusaka Sub District, Tamiang District, Aceh Province, Indonesia	4° 18' 47.841" E	97° 49' 14.270" N	0.30	0.30	5.40	No	09 Juli 2022
165	Ismail Hasim 3	Bengkelang Village, Bandar Pusaka Sub District, Tamiang District, Aceh Province, Indonesia	4° 18' 42.709" E	97° 49' 10.854" N	0.80	0.80	14.40	No	09 Juli 2022
166	Ismawati	Wonosari Village, Tamiang Hulu Sub District, Tamiang District, Aceh Province, Indonesia	4° 18' 48.204" E	97° 54' 7.934" N	2.04	2.04	36.67	No	09 Juli 2022
167	Ismir	Wonosari Village, Tamiang Hulu Sub District, Tamiang District, Aceh Province, Indonesia	4° 18' 52.800" E	97° 54' 1.964" N	1.05	1.05	18.90	No	09 Juli 2022
168	Iswanto	Wonosari Village, Tamiang Hulu Sub District, Tamiang District, Aceh Province, Indonesia	4° 18' 57.913" E	97° 54' 26.876" N	1.92	1.92	34.56	No	09 Juli 2022
169	Iwan Hamdani	Suka Makmur Village, Tenggelun Sub District, Tamiang District, Aceh Province, Indonesia	4° 18' 53.608" E	97° 50' 17.727" N	2.10	2.10	37.80	No	09 Juli 2022
170	Iyasa	Bengkelang Village, Bandar Pusaka Sub District, Tamiang District, Aceh Province, Indonesia	4° 18' 34.000" E	97° 48' 40.000" N	3.00	3.00	54.00	No	09 Juli 2022
171	Jalal 1	Sulum Village, Sekera Sub District, Tamiang District, Aceh Province, Indonesia	4° 18' 29.543" E	97° 51' 4.400" N	0.56	0.56	10.08	No	09 Juli 2022
172	Jalal 2	Sulum Village, Sekera Sub District, Tamiang District, Aceh Province, Indonesia	4° 18' 24.884" E	97° 51' 10.069" N	0.71	0.71	12.78	No	09 Juli 2022
173	Jamal Arif 1	Sulum Village, Sekera Sub District, Tamiang District, Aceh Province, Indonesia	4° 18' 19.731" E	97° 51' 16.627" N	0.50	0.50	9.00	No	09 Juli 2022
174	Jamal Arif 2	Sulum Village, Sekera Sub District, Tamiang District, Aceh Province, Indonesia	4° 18' 21.938" E	97° 51' 7.588" N	0.82	0.82	14.83	No	09 Juli 2022
175	Jamaluddin 1	Baling Karang Village, Sekera Sub District, Tamiang District, Aceh Province, Indonesia	4° 18' 54.077" E	97° 47' 55.675" N	1.25	1.25	22.50	No	09 Juli 2022
176	Jamaluddin 2	Baling Karang Village, Sekera Sub District, Tamiang							

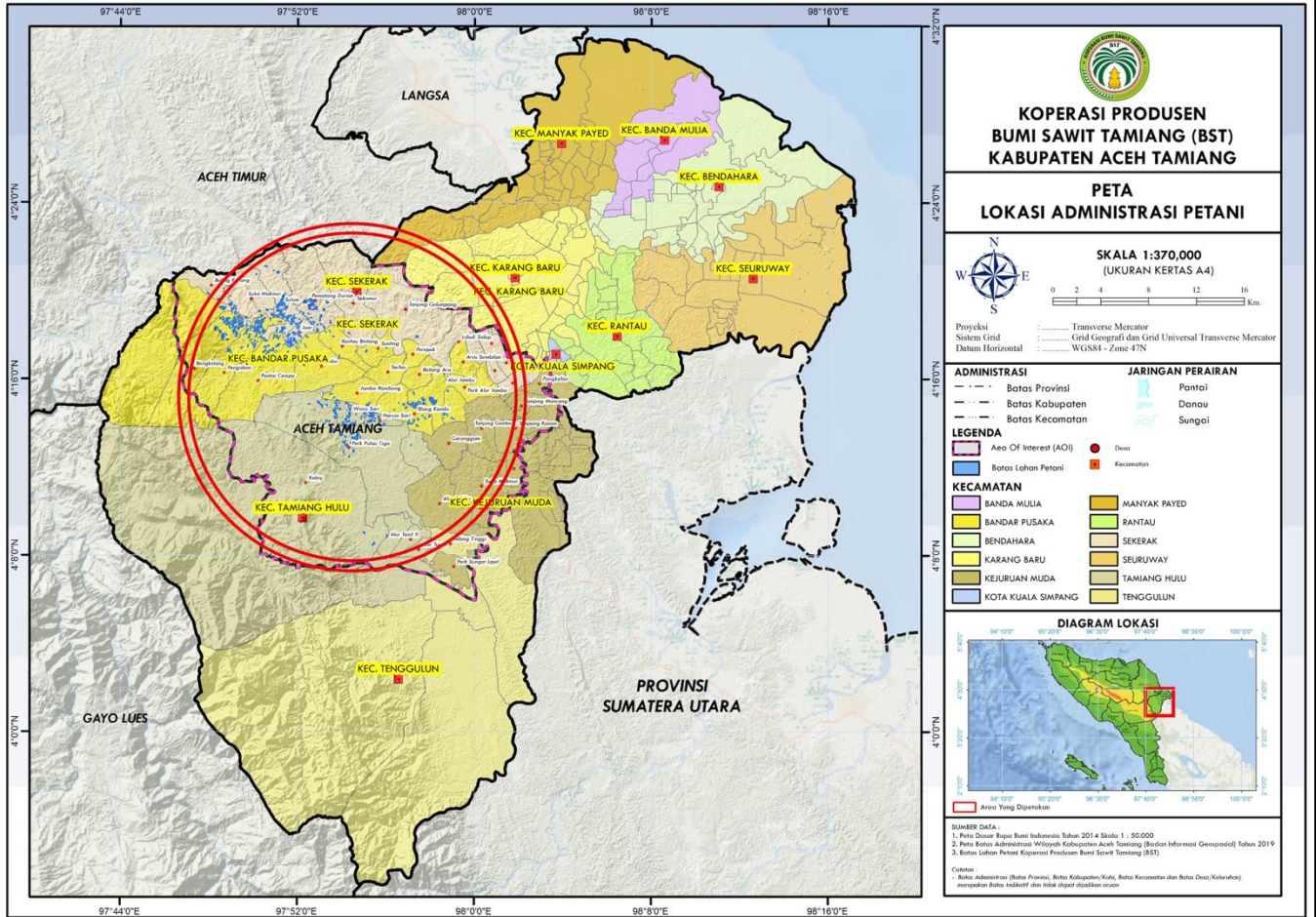
No	Nama	Alamat	Lintang	Bujur	Luas (Ha)	Luas (M ²)	Status	Tanggal	
180	Kaly Mazraa	Bengkelang Village, Bandar Pusaka Sub District, Tamiang District, Aceh Province, Indonesia	4° 18' 27.504" E	97° 49' 26.505" N	0.60	0.60	10.80	No	09 Jul 2022
181	Khairi Abdim 1	Juar Village, Sekera Sub District, Tamiang District, Aceh Province, Indonesia	4° 18' 06.566" E	97° 51' 52.521" N	0.34	0.34	6.04	No	09 Jul 2022
181	Khairi Abdim 2	Juar Village, Sekera Sub District, Tamiang District, Aceh Province, Indonesia	4° 18' 4.810" E	97° 52' 5.338" N	0.24	0.24	4.29	No	09 Jul 2022
182	Khairi Anwar 1	Pematang Duri Village, Sekera Sub District, Tamiang District, Aceh Province, Indonesia	4° 18' 9.499" E	97° 52' 42.647" N	1.50	1.50	27.00	No	09 Jul 2022
182	Khairi Anwar 2	Pematang Duri Village, Sekera Sub District, Tamiang District, Aceh Province, Indonesia	4° 18' 54.544" E	97° 52' 45.562" N	0.20	0.20	3.60	No	09 Jul 2022
183	Khanjimat 1	Sulum Village, Sekera Sub District, Tamiang District, Aceh Province, Indonesia	4° 18' 11.365" E	97° 51' 19.567" N	0.83	0.81	14.88	No	09 Jul 2022
183	Khanjimat 2	Sulum Village, Sekera Sub District, Tamiang District, Aceh Province, Indonesia	4° 18' 46.579" E	97° 51' 21.440" N	1.89	1.89	34.02	No	09 Jul 2022
184	Khulain 1	Wonosa Village, Tamiang Hulu Sub District, Tamiang District, Aceh Province, Indonesia	4° 14' 20.207" E	97° 54' 37.162" N	0.49	0.49	8.81	No	09 Jul 2022
184	Khulain 2	Wonosa Village, Tamiang Hulu Sub District, Tamiang District, Aceh Province, Indonesia	4° 13' 39.775" E	97° 54' 14.918" N	0.71	0.71	12.76	No	09 Jul 2022
185	Kiyah	Bengkelang Village, Bandar Pusaka Sub District, Tamiang District, Aceh Province, Indonesia	4° 17' 54.266" E	97° 48' 40.345" N	0.75	0.75	13.50	No	09 Jul 2022
186	Kuzan	Wonosa Village, Tamiang Hulu Sub District, Tamiang District, Aceh Province, Indonesia	4° 13' 57.272" E	97° 54' 2.506" N	0.44	0.44	7.92	No	09 Jul 2022
187	Kuzan	Blang Kandi Village, Bandar Pusaka Sub District, Tamiang District, Aceh Province, Indonesia	4° 18' 53.867" E	97° 56' 58.538" N	1.28	1.28	23.00	No	09 Jul 2022
188	Lampang	Pematang Duri Village, Sekera Sub District, Tamiang District, Aceh Province, Indonesia	4° 18' 55.335" E	97° 50' 15.069" N	1.05	1.05	19.50	No	09 Jul 2022
189	Lan Rafiq	Pantai Cempaka Village, Bandar Pusaka Sub District, Tamiang District, Aceh Province, Indonesia	4° 17' 55.873" E	97° 50' 55.744" N	0.81	0.81	14.52	No	09 Jul 2022
190	LB Sawang	Pantai Cempaka Village, Bandar Pusaka Sub District, Tamiang District, Aceh Province, Indonesia	4° 17' 53.953" E	97° 51' 6.705" N	0.44	0.44	7.92	No	09 Jul 2022
191	Legmin 1	Blang Kandi Village, Bandar Pusaka Sub District, Tamiang District, Aceh Province, Indonesia	4° 15' 02.292" E	97° 58' 17.863" N	0.76	0.76	13.69	No	09 Jul 2022
191	Legmin 2	Blang Kandi Village, Bandar Pusaka Sub District, Tamiang District, Aceh Province, Indonesia	4° 15' 21.883" E	97° 57' 5.505" N	1.49	1.49	26.84	No	09 Jul 2022
192	Li Suhari 1	Harum Sari Village, Tamiang Hulu Sub District, Tamiang District, Aceh Province, Indonesia	4° 13' 8.777" E	97° 54' 34.730" N	1.36	1.36	24.41	No	09 Jul 2022
192	Li Suhari 2	Harum Sari Village, Tamiang Hulu Sub District, Tamiang District, Aceh Province, Indonesia	4° 13' 5.888" E	97° 54' 34.823" N	1.00	1.00	18.00	No	09 Jul 2022
192	Li Suhari 3	Harum Sari Village, Tamiang Hulu Sub District, Tamiang District, Aceh Province, Indonesia	4° 13' 21.394" E	97° 54' 50.616" N	1.50	1.50	27.00	No	09 Jul 2022
192	Li Suhari 4	Harum Sari Village, Tamiang Hulu Sub District, Tamiang District, Aceh Province, Indonesia	4° 13' 11.806" E	97° 55' 30.535" N	1.00	1.00	18.00	No	09 Jul 2022
193	M Akbar	Pematang Duri Village, Sekera Sub District, Tamiang District, Aceh Province, Indonesia	4° 18' 9.161" E	97° 52' 39.092" N	1.20	1.20	21.60	No	09 Jul 2022
194	M Ayub 1	Sulum Village, Sekera Sub District, Tamiang District, Aceh Province, Indonesia	4° 18' 34.372" E	97° 51' 36.874" N	0.10	0.10	1.85	No	09 Jul 2022
194	M Ayub 2	Juar Village, Sekera Sub District, Tamiang District, Aceh Province, Indonesia	4° 18' 31.633" E	97° 51' 41.071" N	0.23	0.23	4.14	No	09 Jul 2022
195	M Edi Kusuma	Pematang Duri Village, Sekera Sub District, Tamiang District, Aceh Province, Indonesia	4° 17' 4.877" E	97° 49' 1.349" N	4.80	4.80	86.40	No	09 Jul 2022
196	M Hud 1	Juar Village, Sekera Sub District, Tamiang District, Aceh Province, Indonesia	4° 18' 39.892" E	97° 51' 48.944" N	0.83	0.83	14.57	No	09 Jul 2022
196	M Hud 2	Juar Village, Sekera Sub District, Tamiang District, Aceh Province, Indonesia	4° 18' 37.424" E	97° 51' 46.211" N	0.14	0.14	2.45	No	09 Jul 2022
197	M Kins	Kaloy Village, Tamiang Hulu Sub District, Tamiang District, Aceh Province, Indonesia	4° 19' 1.623" E	97° 56' 1.049" N	2.64	2.64	47.52	No	09 Jul 2022
198	M Han Andika	Kaloy Village, Tamiang Hulu Sub District, Tamiang District, Aceh Province, Indonesia	4° 18' 53.436" E	97° 56' 2.781" N	1.60	1.60	28.80	No	09 Jul 2022
199	M Nasir embong	Pematang Duri Village, Sekera Sub District, Tamiang District, Aceh Province, Indonesia	4° 18' 41.528" E	97° 52' 40.484" N	0.64	0.64	9.72	No	09 Jul 2022
200	M Saman 1	Sulum Village, Sekera Sub District, Tamiang District, Aceh Province, Indonesia	4° 18' 21.466" E	97° 51' 11.335" N	2.02	2.02	36.42	No	09 Jul 2022
200	M Saman 2	Sulum Village, Sekera Sub District, Tamiang District, Aceh Province, Indonesia	4° 18' 23.439" E	97° 51' 15.180" N	2.02	2.02	36.42	No	09 Jul 2022
201	M Tap	Pematang Duri Village, Sekera Sub District, Tamiang District, Aceh Province, Indonesia	4° 18' 25.926" E	97° 52' 38.650" N	2.00	2.00	36.00	No	09 Jul 2022
202	M Tani	Pematang Duri Village, Sekera Sub District, Tamiang District, Aceh Province, Indonesia	4° 18' 14.328" E	97° 52' 52.457" N	0.53	0.53	9.53	No	09 Jul 2022
203	M Ubaidullah 1	Harum Sari Village, Tamiang Hulu Sub District, Tamiang District, Aceh Province, Indonesia	4° 13' 5.465" E	97° 54' 28.770" N	0.32	0.32	5.70	No	09 Jul 2022
203	M Ubaidullah 2	Harum Sari Village, Tamiang Hulu Sub District, Tamiang District, Aceh Province, Indonesia	4° 13' 11.963" E	97° 54' 31.045" N	1.38	1.38	24.84	No	09 Jul 2022
203	M Ubaidullah 3	Harum Sari Village, Tamiang Hulu Sub District, Tamiang District, Aceh Province, Indonesia	4° 13' 7.319" E	97° 54' 27.535" N	1.57	1.57	28.30	No	09 Jul 2022
204	M Yana	Pematang Duri Village, Sekera Sub District, Tamiang District, Aceh Province, Indonesia	4° 18' 16.937" E	97° 52' 3.142" N	1.42	1.42	25.56	No	09 Jul 2022
205	M Yari	Pematang Duri Village, Sekera Sub District, Tamiang District, Aceh Province, Indonesia	4° 18' 28.381" E	97° 52' 33.191" N	0.90	0.90	16.20	No	09 Jul 2022
206	M Yunus 1	Juar Village, Sekera Sub District, Tamiang District, Aceh Province, Indonesia	4° 18' 46.035" E	97° 51' 48.684" N	1.63	1.63	29.34	No	09 Jul 2022
206	M Yunus 2	Juar Village, Sekera Sub District, Tamiang District, Aceh Province, Indonesia	4° 18' 51.613" E	97° 51' 50.797" N	1.63	1.63	29.39	No	09 Jul 2022
207	M Ai A 1	Bengkelang Village, Bandar Pusaka Sub District, Tamiang District, Aceh Province, Indonesia	4° 17' 54.601" E	97° 48' 35.211" N	1.25	1.25	22.50	No	09 Jul 2022
207	M Ai A 2	Bengkelang Village, Bandar Pusaka Sub District, Tamiang District, Aceh Province, Indonesia	4° 18' 28.135" E	97° 48' 59.734" N	0.18	0.18	3.24	No	09 Jul 2022
208	M Ai B 1	Bengkelang Village, Bandar Pusaka Sub District, Tamiang District, Aceh Province, Indonesia	4° 17' 58.439" E	97° 48' 34.601" N	0.71	0.71	12.78	No	09 Jul 2022
208	M Ai B 2	Bengkelang Village, Bandar Pusaka Sub District, Tamiang District, Aceh Province, Indonesia	4° 18' 1.837" E	97° 48' 41.604" N	0.70	0.70	12.60	No	09 Jul 2022
209	M Amin 1	Juar Village, Sekera Sub District, Tamiang District, Aceh Province, Indonesia	4° 17' 55.355" E	97° 51' 32.512" N	1.18	1.18	21.31	No	09 Jul 2022
209	M Amin 2	Sulum Village, Sekera Sub District, Tamiang District, Aceh Province, Indonesia	4° 18' 13.681" E	97° 51' 16.648" N	1.37	1.37	24.71	No	09 Jul 2022
210	M Amin Bin Jaludin	Bengkelang Village, Bandar Pusaka Sub District, Tamiang District, Aceh Province, Indonesia	4° 18' 31.900" E	97° 48' 55.615" N	2.00	2.00	36.00	No	09 Jul 2022
211	M Arun	Bengkelang Village, Bandar Pusaka Sub District, Tamiang District, Aceh Province, Indonesia	4° 18' 31.684" E	97° 49' 6.298" N	0.23	0.23	4.11	No	09 Jul 2022
211	M Yunus 1	Juar Village, Sekera Sub District, Tamiang District, Aceh Province, Indonesia	4° 17' 50.105" E	97° 51' 49.204" N	0.55	0.55	9.82	No	09 Jul 2022
212	M Yunus 2	Juar Village, Sekera Sub District, Tamiang District, Aceh Province, Indonesia	4° 18' 16.624" E	97° 52' 1.902" N	0.85	0.85	15.25	No	09 Jul 2022
212	M Yunus 3	Juar Village, Sekera Sub District, Tamiang District, Aceh Province, Indonesia	4° 18' 20.197" E	97° 51' 58.255" N	0.93	0.93	16.76	No	09 Jul 2022
212	M Yunus 4	Juar Village, Sekera Sub District, Tamiang District, Aceh Province, Indonesia	4° 18' 15.402" E	97° 52' 3.284" N	0.47	0.47	8.53	No	09 Jul 2022
213	Mad Hayati 1	Pematang Duri Village, Sekera Sub District, Tamiang District, Aceh Province, Indonesia	4° 18' 46.545" E	97° 52' 37.048" N	0.81	0.81	14.55	No	09 Jul 2022
213	Mad Hayati 2	Pematang Duri Village, Sekera Sub District, Tamiang District, Aceh Province, Indonesia	4° 18' 46.545" E	97° 52' 37.048" N	0.81	0.81	14.55	No	09 Jul 2022
214	Mahidin Karo Karo 1	Bengkelang Village, Bandar Pusaka Sub District, Tamiang District, Aceh Province, Indonesia	4° 18' 24.072" E	97° 49' 22.304" N	2.00	2.00	36.00	No	09 Jul 2022
214	Mahidin Karo Karo 2	Bengkelang Village, Bandar Pusaka Sub District, Tamiang District, Aceh Province, Indonesia	4° 18' 23.077" E	97° 49' 2.953" N	0.50	0.50	9.00	No	09 Jul 2022
214	Mahidin Karo Karo 3	Bengkelang Village, Bandar Pusaka Sub District, Tamiang District, Aceh Province, Indonesia	4° 18' 18.776" E	97° 49' 15.739" N	1.00	1.00	18.00	No	09 Jul 2022
215	Mai Sarah	Pantai Cempaka Village, Bandar Pusaka Sub District, Tamiang District, Aceh Province, Indonesia	4° 17' 16.991" E	97° 50' 44.434" N	1.62	1.62	29.16	No	09 Jul 2022
216	Mai Saizal	Pantai Cempaka Village, Bandar Pusaka Sub District, Tamiang District, Aceh Province, Indonesia	4° 17' 21.992" E	97° 50' 53.465" N	1.04	1.04	18.72	No	09 Jul 2022
217	Mamin Yusnzal 1	Sulum Village, Sekera Sub District, Tamiang District, Aceh Province, Indonesia	4° 18' 55.913" E	97° 51' 15.208" N	0.39	0.39	6.95	No	09 Jul 2022
217	Mamin Yusnzal 2	Sula Makmur Village, Tenggilis Sub District, Tamiang District, Aceh Province, Indonesia	4° 18' 54.382" E	97° 50' 51.608" N	4.66	4.66	83.88	No	09 Jul 2022
218	Marani 1	Blang Kandi Village, Bandar Pusaka Sub District, Tamiang District, Aceh Province, Indonesia	4° 18' 13.921" E	97° 49' 3.824" N	0.68	0.68	12.24	No	09 Jul 2022
218	Marani 2	Wonosa Village, Tamiang Hulu Sub District, Tamiang District, Aceh Province, Indonesia	4° 13' 23.159" E	97° 53' 27.075" N	1.00	1.00	18.00	No	09 Jul 2022
219	Mariono	Wonosa Village, Tamiang Hulu Sub District, Tamiang District, Aceh Province, Indonesia	4° 13' 28.207" E	97° 54' 0.763" N	0.98	0.98	17.70	No	09 Jul 2022
220	Maryanto	Harum Sari Village, Tamiang Hulu Sub District, Tamiang District, Aceh Province, Indonesia	4° 13' 40.629" E	97° 54' 4.968" N	1.50	1.50	27.00	No	09 Jul 2022
222	Maryono 1	Blang Kandi Village, Bandar Pusaka Sub District, Tamiang District, Aceh Province, Indonesia	4° 18' 22.973" E	97° 58' 38.738" N	0.01	0.01	0.22	No	09 Jul 2022
223	Maryono	Pematang Duri Village, Sekera Sub District, Tamiang District, Aceh Province, Indonesia	4° 17' 24.897" E	97° 49' 28.134" N	2.00	2.00	36.00	No	09 Jul 2022
224	Mas Bayu	Blang Kandi Village, Bandar Pusaka Sub District, Tamiang District, Aceh Province, Indonesia	4° 18' 30.950" E	97° 57' 32.636" N	0.04	0.04	0.67	No	09 Jul 2022
225	Masrah	Juar Village, Sekera Sub District, Tamiang District, Aceh Province, Indonesia	4° 17' 42.821" E	97° 51' 51.600" N	0.40	0.40	7.19	No	09 Jul 2022
225	Masrah 2	Bengkelang Village, Bandar Pusaka Sub District, Tamiang District, Aceh Province, Indonesia	4° 18' 48.292" E	97° 49' 26.829" N	0.55	0.55	12.50	No	09 Jul 2022
226	Masrizal 1	Bengkelang Village, Bandar Pusaka Sub District, Tamiang District, Aceh Province, Indonesia	4° 18' 46.791" E	97° 48' 7.294" N	0.30	0.30	5.40	No	09 Jul 2022
226	Masrizal 2	Bengkelang Village, Bandar Pusaka Sub District, Tamiang District, Aceh Province, Indonesia	4° 18' 7.407" E	97° 48' 29.943" N	2.00	2.00	36.00	No	09 Jul 2022
227	Mat Baeti	Pantai Cempaka Village, Bandar Pusaka Sub District, Tamiang District, Aceh Province, Indonesia	4° 17' 24.932" E	97° 51' 57.259" N	1.41	1.41	25.38	No	09 Jul 2022
228	Mat Inan	Pantai Cempaka Village, Bandar Pusaka Sub District, Tamiang District, Aceh Province, Indonesia	4° 17' 1.599" E	97° 50' 39.862" N	1.27	1.27	22.85	No	09 Jul 2022
229	Mat Munandar 1	Harum Sari Village, Tamiang Hulu Sub District, Tamiang District, Aceh Province, Indonesia	4° 13' 59.217" E	97° 55' 40.589" N	0.77	0.77	13.80	No	09 Jul 2022
229	Mat Munandar 2	Harum Sari Village, Tamiang Hulu Sub District, Tamiang District, Aceh Province, Indonesia	4° 13' 55.811" E	97° 54' 41.050" N	0.77	0.77	13.80	No	09 Jul 2022
229	Mat Munandar 3	Harum Sari Village, Tamiang Hulu Sub District, Tamiang District, Aceh Province, Indonesia	4° 13' 59.731" E	97° 55' 43.032" N	0.77	0.77	13.80	No	09 Jul 2022
229	Mat Munandar 4	Harum Sari Village, Tamiang Hulu Sub District, Tamiang District, Aceh Province, Indonesia	4° 13' 54.024" E	97° 54' 38.024" N	0.77	0.77	13.80	No	09 Jul 2022
229	Mat Munandar 5	Harum Sari Village, Tamiang Hulu Sub District, Tamiang District, Aceh Province, Indonesia	4° 13' 55.955" E	97° 54' 55.884" N	0.77	0.77	13.80	No	09 Jul 2022
230	Mat Pah	Pantai Cempaka Village, Bandar Pusaka Sub District, Tamiang District, Aceh Province, Indonesia	4° 18' 54.549" E	97° 50' 17.864" N	2.30	2.30	41.39	No	09 Jul 2022
231	Mat Puleh	Pematang Duri Village, Sekera Sub District, Tamiang District, Aceh Province, Indonesia	4° 17' 31.968" E	97° 50' 21.119" N	1.60	1.60	28.84	No	09 Jul 2022
231	Mat Puleh 1	Sulum Village, Sekera Sub District, Tamiang District, Aceh Province, Indonesia	4° 18' 31.965" E	97° 51' 32.562" N	0.46	0.46	8.27	No	09 Jul 2022
232	Mat Puleh 2	Sulum Village, Sekera Sub District, Tamiang District, Aceh Province, Indonesia	4° 18' 29.762" E	97° 51' 30.807" N	0.61	0.61	10.90	No	09 Jul 2022
232	Mat Puleh 3	Sulum Village, Sekera Sub District, Tamiang District, Aceh Province, Indonesia	4° 18' 36.182" E	97° 51' 34.188" N	0.89	0.89	16.00	No	09 Jul 2022
233	Mat Raje 1	Juar Village, Sekera Sub District, Tamiang District, Aceh Province, Indonesia	4° 17' 51.789" E	97° 51' 43.624" N	0.34	0.34	6.04	No	09 Jul 2022
233	Mat Raje 2	Juar Village, Sekera Sub District, Tamiang District, Aceh Province, Indonesia	4° 17' 49.644" E	97° 51' 40.651" N	0.89	0.89	16.07	No	09 Jul 2022
234	Maizana	Harum Sari Village, Tamiang Hulu Sub District, Tamiang District, Aceh Province, Indonesia	4° 13' 55.955" E	97° 54' 55.884" N	2.00	2.00	36.00	No	09 Jul 2022
234	Maizana 1	Harum Sari Village, Tamiang Hulu Sub District, Tamiang District, Aceh Province, Indonesia	4° 13' 56.064" E	97° 54' 24.165" N	0.55	0.55	9.90	No	09 Jul 2022
234	Maizana 2	Sulum Village, Sekera Sub District, Tamiang District, Aceh Province, Indonesia	4° 18' 50.807" E	97° 51' 42.576" N	0.89	0.89	16.04	No	09 Jul 2022
235	Melani	Sulum Village, Sekera Sub District, Tamiang District, Aceh Province, Indonesia	4° 18' 51.684" E	97° 51' 34.721" N	0.91	0.91	16.41	No	09 Jul 2022
236	Melan	Pematang Duri Village, Sekera Sub District, Tamiang District, Aceh Province, Indonesia	4°						

269	Muzburruman	Pengdam Village, Bandar Pusaka Sub District, Tamiang District, Aceh Province, Indonesia	4° 18' 37.459" E	97° 50' 8.845" N	2.43	2.43	43.74	No	09 Jul 2022
270	Naimah	Pengdam Village, Bandar Pusaka Sub District, Tamiang District, Aceh Province, Indonesia	4° 17' 29.839" E	97° 49' 46.008" N	0.80	0.80	14.40	No	09 Jul 2022
271	Nani	Blang Kandi Village, Bandar Pusaka Sub District, Tamiang District, Aceh Province, Indonesia	4° 14' 24.506" E	97° 56' 11.612" N	0.05	0.05	0.81	No	09 Jul 2022
272	Nasab Hasbuan	Wonosari Village, Tamiang Hulu Sub District, Tamiang District, Aceh Province, Indonesia	4° 14' 43.106" E	97° 54' 18.318" N	0.48	0.48	8.64	No	09 Jul 2022
273	Nasib Siliring	Pengdam Village, Bandar Pusaka Sub District, Tamiang District, Aceh Province, Indonesia	4° 18' 43.933" E	97° 49' 52.923" N	0.62	0.62	11.16	No	09 Jul 2022
274	Nasip	Harum Sari Village, Tamiang Hulu Sub District, Tamiang District, Aceh Province, Indonesia	4° 14' 22.988" E	97° 55' 13.246" N	0.61	0.61	11.06	No	09 Jul 2022
275	Nasir	Pematang Duri Village, Sekera Sub District, Tamiang District, Aceh Province, Indonesia	4° 19' 33.070" E	97° 53' 53.388" N	0.20	0.20	3.60	No	09 Jul 2022
276	Nasrul	Pengdam Village, Bandar Pusaka Sub District, Tamiang District, Aceh Province, Indonesia	4° 18' 23.583" E	97° 50' 4.377" N	0.82	0.82	14.80	No	09 Jul 2022
277	Nayan 1	Juar Village, Sekera Sub District, Tamiang District, Aceh Province, Indonesia	4° 17' 41.997" E	97° 51' 35.479" N	0.51	0.51	9.12	No	09 Jul 2022
277	Nayan 2	Juar Village, Sekera Sub District, Tamiang District, Aceh Province, Indonesia	4° 17' 57.539" E	97° 52' 4.967" N	1.39	1.39	24.98	No	09 Jul 2022
277	Nayan 3	Juar Village, Sekera Sub District, Tamiang District, Aceh Province, Indonesia	4° 17' 38.424" E	97° 51' 36.757" N	0.54	0.54	9.68	No	09 Jul 2022
277	Nayan 4	Juar Village, Sekera Sub District, Tamiang District, Aceh Province, Indonesia	4° 17' 48.657" E	97° 51' 34.607" N	0.39	0.39	7.02	No	09 Jul 2022
278	Ngadim 1	Wonosari Village, Tamiang Hulu Sub District, Tamiang District, Aceh Province, Indonesia	4° 14' 36.939" E	97° 53' 54.994" N	1.03	1.03	40.32	No	09 Jul 2022
278	Ngadim 2	Wonosari Village, Tamiang Hulu Sub District, Tamiang District, Aceh Province, Indonesia	4° 14' 42.490" E	97° 53' 48.163" N	0.66	0.66	11.91	No	09 Jul 2022
278	Ngadim 3	Wonosari Village, Tamiang Hulu Sub District, Tamiang District, Aceh Province, Indonesia	4° 14' 39.897" E	97° 53' 54.787" N	0.67	0.67	12.00	No	09 Jul 2022
279	Ngatmi	Wonosari Village, Tamiang Hulu Sub District, Tamiang District, Aceh Province, Indonesia	4° 14' 34.294" E	97° 54' 14.022" N	0.33	0.33	5.91	No	09 Jul 2022
280	Ngatni	Harum Sari Village, Tamiang Hulu Sub District, Tamiang District, Aceh Province, Indonesia	4° 13' 55.076" E	97° 55' 56.713" N	1.00	1.00	18.00	No	09 Jul 2022
281	Ngatni 1	Pengdam Village, Sekera Sub District, Tamiang District, Aceh Province, Indonesia	4° 18' 16.076" E	97° 51' 24.125" N	0.49	0.49	8.83	No	09 Jul 2022
281	Ngatni 2	Juar Village, Sekera Sub District, Tamiang District, Aceh Province, Indonesia	4° 18' 7.718" E	97° 51' 17.892" N	0.69	0.69	10.65	No	09 Jul 2022
282	Ngatni	Wonosari Village, Tamiang Hulu Sub District, Tamiang District, Aceh Province, Indonesia	4° 14' 15.820" E	97° 53' 41.339" N	2.27	2.27	42.67	No	09 Jul 2022
282	Ngatni 1	Harum Sari Village, Tamiang Hulu Sub District, Tamiang District, Aceh Province, Indonesia	4° 14' 16.394" E	97° 55' 15.055" N	2.34	2.34	44.80	No	09 Jul 2022
283	Ngatni 1	Harum Sari Village, Tamiang Hulu Sub District, Tamiang District, Aceh Province, Indonesia	4° 14' 26.997" E	97° 55' 13.969" N	3.60	3.60	64.80	No	09 Jul 2022
283	Ngatni 2	Harum Sari Village, Tamiang Hulu Sub District, Tamiang District, Aceh Province, Indonesia	4° 14' 34.475" E	97° 55' 10.588" N	1.00	1.00	18.00	No	09 Jul 2022
283	Ngatni 3	Harum Sari Village, Tamiang Hulu Sub District, Tamiang District, Aceh Province, Indonesia	4° 14' 46.491" E	97° 55' 21.642" N	1.90	1.90	34.20	No	09 Jul 2022
284	Nia Ati	Wonosari Village, Tamiang Hulu Sub District, Tamiang District, Aceh Province, Indonesia	4° 14' 48.392" E	97° 53' 19.273" N	2.03	2.03	36.59	No	09 Jul 2022
285	Nicky Rinaldi	Wonosari Village, Tamiang Hulu Sub District, Tamiang District, Aceh Province, Indonesia	4° 15' 1.281" E	97° 53' 50.381" N	2.00	2.00	36.00	No	09 Jul 2022
286	Nur Aman 1	Bengkelang Village, Bandar Pusaka Sub District, Tamiang District, Aceh Province, Indonesia	4° 18' 3.461" E	97° 49' 14.008" N	1.56	1.56	28.08	No	09 Jul 2022
286	Nur Aman 2	Bengkelang Village, Bandar Pusaka Sub District, Tamiang District, Aceh Province, Indonesia	4° 18' 29.630" E	97° 49' 2.940" N	1.83	1.83	32.94	No	09 Jul 2022
287	Nur Arun	Pengdam Village, Bandar Pusaka Sub District, Tamiang District, Aceh Province, Indonesia	4° 18' 28.557" E	97° 50' 5.988" N	1.00	1.00	18.00	No	09 Jul 2022
287	Nur Arum	Pengdam Village, Bandar Pusaka Sub District, Tamiang District, Aceh Province, Indonesia	4° 18' 50.986" E	97° 50' 0.280" N	0.20	0.20	3.60	No	09 Jul 2022
288	Nur Rahmah	Pengdam Village, Bandar Pusaka Sub District, Tamiang District, Aceh Province, Indonesia	4° 17' 51.650" E	97° 50' 13.938" N	1.20	1.20	21.60	No	09 Jul 2022
290	Nurani	Pantai Cempaka Village, Bandar Pusaka Sub District, Tamiang District, Aceh Province, Indonesia	4° 17' 32.106" E	97° 51' 6.292" N	2.00	2.00	36.00	No	09 Jul 2022
291	Nurani	Juar Village, Sekera Sub District, Tamiang District, Aceh Province, Indonesia	4° 18' 16.663" E	97° 51' 58.803" N	0.55	0.55	9.82	No	09 Jul 2022
292	Nurakin 1	Bengkelang Village, Bandar Pusaka Sub District, Tamiang District, Aceh Province, Indonesia	4° 18' 30.978" E	97° 49' 23.796" N	0.24	0.24	4.32	No	09 Jul 2022
292	Nurakin 2	Pantai Cempaka Village, Bandar Pusaka Sub District, Tamiang District, Aceh Province, Indonesia	4° 18' 39.885" E	97° 49' 10.005" N	1.51	1.51	27.09	No	09 Jul 2022
292	Nurakin 3	Bengkelang Village, Bandar Pusaka Sub District, Tamiang District, Aceh Province, Indonesia	4° 17' 26.960" E	97° 50' 30.807" N	1.37	1.37	24.71	No	09 Jul 2022
293	Nuridin	Pantai Cempaka Village, Bandar Pusaka Sub District, Tamiang District, Aceh Province, Indonesia	4° 18' 58.453" E	97° 50' 41.907" N	0.62	0.62	11.16	No	09 Jul 2022
294	Nurhijah	Pematang Duri Village, Sekera Sub District, Tamiang District, Aceh Province, Indonesia	4° 18' 14.147" E	97° 52' 14.147" N	0.59	0.59	10.62	No	09 Jul 2022
295	Nurhal	Pantai Cempaka Village, Bandar Pusaka Sub District, Tamiang District, Aceh Province, Indonesia	4° 17' 27.033" E	97° 50' 35.802" N	1.25	1.25	22.50	No	09 Jul 2022
295	Nurhoman	Harum Sari Village, Tamiang Hulu Sub District, Tamiang District, Aceh Province, Indonesia	4° 13' 16.430" E	97° 54' 41.475" N	1.49	1.49	26.78	No	09 Jul 2022
297	Nurul Husna	Pengdam Village, Bandar Pusaka Sub District, Tamiang District, Aceh Province, Indonesia	4° 18' 7.781" E	97° 50' 5.786" N	0.64	0.64	11.52	No	09 Jul 2022
298	Padi	Wonosari Village, Tamiang Hulu Sub District, Tamiang District, Aceh Province, Indonesia	4° 15' 19.166" E	97° 53' 33.968" N	0.53	0.53	9.54	No	09 Jul 2022
299	Pajaruddin 1	Wonosari Village, Tamiang Hulu Sub District, Tamiang District, Aceh Province, Indonesia	4° 13' 57.216" E	97° 54' 35.403" N	1.06	1.06	19.13	No	09 Jul 2022
299	Pajaruddin 2	Wonosari Village, Tamiang Hulu Sub District, Tamiang District, Aceh Province, Indonesia	4° 13' 32.124" E	97° 54' 26.906" N	0.33	0.33	5.89	No	09 Jul 2022
300	Pajaruddin 3	Wonosari Village, Tamiang Hulu Sub District, Tamiang District, Aceh Province, Indonesia	4° 13' 33.997" E	97° 54' 29.626" N	0.50	0.50	8.92	No	09 Jul 2022
301	Pandi	Wonosari Village, Tamiang Hulu Sub District, Tamiang District, Aceh Province, Indonesia	4° 13' 44.137" E	97° 54' 31.720" N	1.70	1.70	30.60	No	09 Jul 2022
301	Pandi	Bengkelang Village, Bandar Pusaka Sub District, Tamiang District, Aceh Province, Indonesia	4° 18' 35.445" E	97° 49' 29.950" N	0.40	0.40	7.20	No	09 Jul 2022
302	Pandi 1	Wonosari Village, Tamiang Hulu Sub District, Tamiang District, Aceh Province, Indonesia	4° 14' 35.408" E	97° 53' 55.715" N	0.41	0.41	7.30	No	09 Jul 2022
302	Pandi 2	Wonosari Village, Tamiang Hulu Sub District, Tamiang District, Aceh Province, Indonesia	4° 14' 29.393" E	97° 53' 39.037" N	0.77	0.77	13.84	No	09 Jul 2022
303	Poriman 1	Juar Village, Sekera Sub District, Tamiang District, Aceh Province, Indonesia	4° 18' 7.991" E	97° 51' 46.769" N	0.51	0.51	9.13	No	09 Jul 2022
303	Poriman 2	Juar Village, Sekera Sub District, Tamiang District, Aceh Province, Indonesia	4° 18' 3.514" E	97° 51' 56.478" N	0.52	0.52	9.30	No	09 Jul 2022
303	Poriman 3	Juar Village, Sekera Sub District, Tamiang District, Aceh Province, Indonesia	4° 18' 5.121" E	97° 51' 47.615" N	1.08	1.08	19.44	No	09 Jul 2022
304	Poriyang	Wonosari Village, Tamiang Hulu Sub District, Tamiang District, Aceh Province, Indonesia	4° 13' 58.570" E	97° 54' 30.000" N	0.66	0.66	11.88	No	09 Jul 2022
305	Puji	Blang Kandi Village, Bandar Pusaka Sub District, Tamiang District, Aceh Province, Indonesia	4° 14' 52.021" E	97° 57' 47.950" N	0.04	0.04	0.64	No	09 Jul 2022
305	Puji 2	Blang Kandi Village, Bandar Pusaka Sub District, Tamiang District, Aceh Province, Indonesia	4° 14' 52.986" E	97° 57' 43.011" N	3.59	3.59	64.68	No	09 Jul 2022
306	Rabudin	Pengdam Village, Bandar Pusaka Sub District, Tamiang District, Aceh Province, Indonesia	4° 18' 32.318" E	97° 50' 13.628" N	0.50	0.50	9.00	No	09 Jul 2022
307	Rabumah	Pengdam Village, Bandar Pusaka Sub District, Tamiang District, Aceh Province, Indonesia	4° 18' 0.897" E	97° 49' 33.725" N	0.60	0.60	10.80	No	09 Jul 2022
308	Rahmah	Wonosari Village, Tamiang Hulu Sub District, Tamiang District, Aceh Province, Indonesia	4° 14' 19.663" E	97° 54' 14.918" N	1.00	1.00	18.00	No	09 Jul 2022
308	Rahmad A	Pengdam Village, Bandar Pusaka Sub District, Tamiang District, Aceh Province, Indonesia	4° 17' 30.147" E	97° 50' 4.006" N	3.00	3.00	54.00	No	09 Jul 2022
310	Rahmad B	Batabudung Village, Bandar Pusaka Sub District, Tamiang District, Aceh Province, Indonesia	4° 18' 14.588" E	97° 48' 38.995" N	4.68	4.68	84.15	No	09 Jul 2022
310	Rahmad C	Juar Village, Sekera Sub District, Tamiang District, Aceh Province, Indonesia	4° 17' 42.909" E	97° 51' 43.780" N	0.28	0.28	4.98	No	09 Jul 2022
311	Rahmad C 1	Juar Village, Sekera Sub District, Tamiang District, Aceh Province, Indonesia	4° 17' 40.438" E	97° 51' 43.444" N	0.16	0.16	2.88	No	09 Jul 2022
311	Rahmad C 3	Juar Village, Sekera Sub District, Tamiang District, Aceh Province, Indonesia	4° 17' 48.363" E	97° 51' 48.363" N	0.14	0.14	2.52	No	09 Jul 2022
312	Rahma A	Pantai Cempaka Village, Bandar Pusaka Sub District, Tamiang District, Aceh Province, Indonesia	4° 17' 2.196" E	97° 50' 46.081" N	1.75	1.75	31.49	No	09 Jul 2022
313	Raman	Blang Kandi Village, Bandar Pusaka Sub District, Tamiang District, Aceh Province, Indonesia	4° 14' 49.084" E	97° 57' 26.430" N	1.90	1.90	34.20	No	09 Jul 2022
314	Raja Mujahid	Pengdam Village, Bandar Pusaka Sub District, Tamiang District, Aceh Province, Indonesia	4° 18' 12.106" E	97° 50' 6.649" N	0.60	0.60	10.80	No	09 Jul 2022
315	Ramadhani	Bengkelang Village, Bandar Pusaka Sub District, Tamiang District, Aceh Province, Indonesia	4° 18' 16.316" E	97° 48' 57.896" N	0.70	0.70	12.60	No	09 Jul 2022
316	Raman	Harum Sari Village, Tamiang Hulu Sub District, Tamiang District, Aceh Province, Indonesia	4° 13' 4.084" E	97° 54' 42.775" N	1.00	1.00	18.00	No	09 Jul 2022
317	Rami 1	Blang Kandi Village, Bandar Pusaka Sub District, Tamiang District, Aceh Province, Indonesia	4° 14' 37.601" E	97° 57' 53.178" N	0.04	0.04	0.75	No	09 Jul 2022
317	Rami 2	Blang Kandi Village, Bandar Pusaka Sub District, Tamiang District, Aceh Province, Indonesia	4° 14' 37.099" E	97° 57' 51.863" N	0.70	0.70	12.60	No	09 Jul 2022
317	Rami 3	Blang Kandi Village, Bandar Pusaka Sub District, Tamiang District, Aceh Province, Indonesia	4° 14' 40.631" E	97° 57' 50.833" N	2.13	2.13	38.97	No	09 Jul 2022
318	Rami Ependi 1	Juar Village, Sekera Sub District, Tamiang District, Aceh Province, Indonesia	4° 17' 40.631" E	97° 51' 29.690" N	0.19	0.19	3.37	No	09 Jul 2022
318	Rami Ependi 2	Juar Village, Sekera Sub District, Tamiang District, Aceh Province, Indonesia	4° 17' 49.695" E	97° 51' 33.338" N	0.38	0.38	6.84	No	09 Jul 2022
318	Rami Ependi 3	Juar Village, Sekera Sub District, Tamiang District, Aceh Province, Indonesia	4° 17' 41.209" E	97° 51' 32.548" N	0.45	0.45	8.10	No	09 Jul 2022
318	Rami Ependi 4	Juar Village, Sekera Sub District, Tamiang District, Aceh Province, Indonesia	4° 17' 44.569" E	97° 51' 38.721" N	0.49	0.49	8.82	No	09 Jul 2022
318	Rami Ependi 5	Juar Village, Sekera Sub District, Tamiang District, Aceh Province, Indonesia	4° 17' 57.120" E	97° 51' 37.008" N	1.10	1.10	19.80	No	09 Jul 2022
319	Rappah 1	Sula Malmur Village, Tenggulun Sub District, Tamiang District, Aceh Province, Indonesia	4° 18' 39.931" E	97° 51' 43.998" N	1.14	1.14	20.45	No	09 Jul 2022
319	Rappah 2	Sula Malmur Village, Tenggulun Sub District, Tamiang District, Aceh Province, Indonesia	4° 18' 31.805" E	97° 51' 41.679" N	1.14	1.14	20.45	No	09 Jul 2022
320	Rasidi	Bengkelang Village, Bandar Pusaka Sub District, Tamiang District, Aceh Province, Indonesia	4° 18' 47.223" E	97° 49' 52.223" N	1.00	1.00	18.00	No	09 Jul 2022
321	Rasimin 1	Harum Sari Village, Tamiang Hulu Sub District, Tamiang District, Aceh Province, Indonesia	4° 14' 16.862" E	97° 55' 38.676" N	0.40	0.40	7.20	No	09 Jul 2022
321	Rasimin 2	Harum Sari Village, Tamiang Hulu Sub District, Tamiang District, Aceh Province, Indonesia	4° 14' 17.936" E	97° 55' 40.694" N	0.44	0.44	7.88	No	09 Jul 2022
322	Rastum	Bengkelang Village, Bandar Pusaka Sub District, Tamiang District, Aceh Province, Indonesia	4° 18' 25.853" E	97° 49' 27.754" N	1.00	1.00	18.00	No	09 Jul 2022
323	Raha 1	Juar Village, Sekera Sub District, Tamiang District, Aceh Province, Indonesia	4° 17' 13.245" E	97° 51' 33.571" N	0.64	0.64	11.53	No	09 Jul 2022
323	Raha 2	Pantai Cempaka Village, Sekera Sub District, Tamiang District, Aceh Province, Indonesia	4° 17' 32.284" E	97° 51' 47.794" N	0.37	0.37	6.73	No	09 Jul 2022
323	Raha 3	Juar Village, Sekera Sub District, Tamiang District, Aceh Province, Indonesia	4° 17' 41.222" E	97° 51' 43.176" N	0.77	0.77	13.86	No	09 Jul 2022
324	Rasmi M	Pengdam Village, Bandar Pusaka Sub District, Tamiang District, Aceh Province, Indonesia	4° 18' 34.936" E	97° 50' 10.652" N	0.70</				

362	Sahdan 1	Sulum Village, Sekerek Sub District, Tamiang District, Aceh Province, Indonesia	4°18'55.747"E	97°51'11.178"N	2.00	2.00	36.00	No	09 Jul 2022
	Sahdan 2	Sulum Village, Sekerek Sub District, Tamiang District, Aceh Province, Indonesia	4°18'46.485"E	97°51'35.839"N	1.72	1.72	30.96	No	09 Jul 2022
	Sahdan 3	Sulum Village, Sekerek Sub District, Tamiang District, Aceh Province, Indonesia	4°18'39.605"E	97°51'28.308"N	0.08	0.08	1.44	No	09 Jul 2022
	Sahdan 4	Pengdam Village, Sekerek Sub District, Tamiang District, Aceh Province, Indonesia	4°18'38.074"E	97°51'32.472"N	1.40	1.40	25.26	No	09 Jul 2022
	Sahdan 5	Sulum Village, Sekerek Sub District, Tamiang District, Aceh Province, Indonesia	4°18'46.265"E	97°51'28.765"N	2.12	2.12	36.18	No	09 Jul 2022
363	Sahr 1	Bengkelang Village, Bandar Pusaka Sub District, Tamiang District, Aceh Province, Indonesia	4°18'44.849"E	97°49'28.807"N	0.30	0.30	5.40	No	09 Jul 2022
	Sahr 2	Bengkelang Village, Bandar Pusaka Sub District, Tamiang District, Aceh Province, Indonesia	4°18'47.627"E	97°49'27.863"N	0.25	0.25	4.50	No	09 Jul 2022
	Sahr 3	Bengkelang Village, Bandar Pusaka Sub District, Tamiang District, Aceh Province, Indonesia	4°18'46.861"E	97°49'37.591"N	1.28	1.28	22.96	No	09 Jul 2022
364	Sahrulian	Bengkelang Village, Bandar Pusaka Sub District, Tamiang District, Aceh Province, Indonesia	4°18'49.581"E	97°48'38.367"N	2.00	2.00	36.00	No	09 Jul 2022
	Said A1	Juar Village, Sekerek Sub District, Tamiang District, Aceh Province, Indonesia	4°17'43.367"E	97°51'52.226"N	0.25	0.25	4.52	No	09 Jul 2022
	Said A2	Juar Village, Sekerek Sub District, Tamiang District, Aceh Province, Indonesia	4°18'42.780"E	97°52'4.499"N	0.51	0.51	9.18	No	09 Jul 2022
	Said A3	Juar Village, Sekerek Sub District, Tamiang District, Aceh Province, Indonesia	4°18'22.106"E	97°52'18.340"N	1.46	1.46	26.34	No	09 Jul 2022
	Sairi Aem 1	Juar Village, Sekerek Sub District, Tamiang District, Aceh Province, Indonesia	4°18'22.593"E	97°51'59.531"N	0.88	0.88	16.81	No	09 Jul 2022
	Sairi Aem 2	Juar Village, Sekerek Sub District, Tamiang District, Aceh Province, Indonesia	4°18'22.777"E	97°52'0.222"N	0.27	0.27	4.86	No	09 Jul 2022
366	Saidah	Bengkelang Village, Bandar Pusaka Sub District, Tamiang District, Aceh Province, Indonesia	4°19'0.035"E	97°49'11.249"N	0.28	0.28	5.08	No	09 Jul 2022
368	Saidina	Pengdam Village, Bandar Pusaka Sub District, Tamiang District, Aceh Province, Indonesia	4°18'44.065"E	97°49'39.745"N	1.79	1.79	32.22	No	09 Jul 2022
	Saiif Bahr Abu Bakar	Pematang Duri Village, Sekerek Sub District, Tamiang District, Aceh Province, Indonesia	4°18'34.635"E	97°52'40.494"N	1.00	1.00	18.00	No	09 Jul 2022
370	Saifin 1	Pematang Duri Village, Sekerek Sub District, Tamiang District, Aceh Province, Indonesia	4°18'21.018"E	97°52'43.296"N	2.00	2.00	36.00	No	09 Jul 2022
	Saifin 2	Pematang Duri Village, Sekerek Sub District, Tamiang District, Aceh Province, Indonesia	4°18'22.748"E	97°52'39.636"N	0.50	0.50	9.00	No	09 Jul 2022
371	Salam	Pengdam Village, Bandar Pusaka Sub District, Tamiang District, Aceh Province, Indonesia	4°18'44.556"E	97°50'28.647"N	0.50	0.50	9.00	No	09 Jul 2022
372	Salleman	Pengdam Village, Bandar Pusaka Sub District, Tamiang District, Aceh Province, Indonesia	4°18'34.069"E	97°50'3.596"N	0.25	0.25	4.53	No	09 Jul 2022
	Saleman	Pengdam Village, Bandar Pusaka Sub District, Tamiang District, Aceh Province, Indonesia	4°18'22.301"E	97°50'30.044"N	3.43	3.43	61.74	No	09 Jul 2022
	Salsiah M	Juar Village, Sekerek Sub District, Tamiang District, Aceh Province, Indonesia	4°18'35.266"E	97°51'47.068"N	0.40	0.40	7.29	No	09 Jul 2022
375	Sami	Wonosari Village, Tamiang Hulu Sub District, Tamiang District, Aceh Province, Indonesia	4°18'13.755"E	97°54'33.847"N	2.05	2.05	36.97	No	09 Jul 2022
	Sami 1	Wonosari Village, Tamiang Hulu Sub District, Tamiang District, Aceh Province, Indonesia	4°18'15.606"E	97°55'0.148"N	1.15	1.15	2.65	No	09 Jul 2022
	Samsahar 1	Sulum Village, Sekerek Sub District, Tamiang District, Aceh Province, Indonesia	4°18'49.978"E	97°51'6.092"N	1.23	1.23	22.18	No	09 Jul 2022
	Samsahar 2	Sulum Village, Sekerek Sub District, Tamiang District, Aceh Province, Indonesia	4°18'49.399"E	97°51'8.894"N	1.23	1.23	22.18	No	09 Jul 2022
378	Samsul	Sulum Village, Sekerek Sub District, Tamiang District, Aceh Province, Indonesia	4°18'49.187"E	97°51'55.450"N	0.77	0.77	13.78	No	09 Jul 2022
	Samsul Athin 1	Bengkelang Village, Bandar Pusaka Sub District, Tamiang District, Aceh Province, Indonesia	4°18'55.502"E	97°48'41.555"N	0.99	0.99	17.52	No	09 Jul 2022
	Samsul Athin 2	Bengkelang Village, Bandar Pusaka Sub District, Tamiang District, Aceh Province, Indonesia	4°18'55.502"E	97°48'41.555"N	0.99	0.99	17.52	No	09 Jul 2022
	Saraih 1	Sulum Village, Sekerek Sub District, Tamiang District, Aceh Province, Indonesia	4°18'53.242"E	97°51'51.530"N	0.68	0.68	12.29	No	09 Jul 2022
	Saraih 2	Sulum Village, Sekerek Sub District, Tamiang District, Aceh Province, Indonesia	4°18'51.295"E	97°51'0.867"N	0.52	0.52	9.42	No	09 Jul 2022
381	Sapri	Pantai Cempaka Village, Bandar Pusaka Sub District, Tamiang District, Aceh Province, Indonesia	4°17'12.969"E	97°50'27.900"N	1.58	1.58	28.44	No	09 Jul 2022
382	San Wahyuni	Pengdam Village, Bandar Pusaka Sub District, Tamiang District, Aceh Province, Indonesia	4°17'44.129"E	97°49'50.608"N	0.60	0.60	10.80	No	09 Jul 2022
	Saring 1	Wonosari Village, Tamiang Hulu Sub District, Tamiang District, Aceh Province, Indonesia	4°18'16.642"E	97°55'1.594"N	0.61	0.61	10.98	No	09 Jul 2022
	Saring 2	Wonosari Village, Tamiang Hulu Sub District, Tamiang District, Aceh Province, Indonesia	4°18'16.260"E	97°55'3.645"N	0.19	0.19	3.48	No	09 Jul 2022
	Sarmin	Pengdam Village, Bandar Pusaka Sub District, Tamiang District, Aceh Province, Indonesia	4°18'21.084"E	97°50'8.938"N	0.15	0.15	2.70	No	09 Jul 2022
	Sarmin	Suka Makmura Village, Sekerek Sub District, Tamiang District, Aceh Province, Indonesia	4°18'16.159"E	97°51'4.432"N	0.87	0.87	15.75	No	09 Jul 2022
	Sarwil	Biang Kanda Village, Bandar Pusaka Sub District, Tamiang District, Aceh Province, Indonesia	4°18'51.735"E	97°57'19.111"N	1.16	1.16	20.84	No	09 Jul 2022
	Sayet 1	Biang Kanda Village, Bandar Pusaka Sub District, Tamiang District, Aceh Province, Indonesia	4°18'59.407"E	97°57'11.425"N	2.60	2.60	46.81	No	09 Jul 2022
	Sayet 2	Biang Kanda Village, Bandar Pusaka Sub District, Tamiang District, Aceh Province, Indonesia	4°18'47.299"E	97°57'16.193"N	2.60	2.60	46.81	No	09 Jul 2022
	Seh Nurdin 1	Bengkelang Village, Bandar Pusaka Sub District, Tamiang District, Aceh Province, Indonesia	4°18'9.847"E	97°49'2.800"N	1.16	1.16	20.88	No	09 Jul 2022
	Seh Nurdin 2	Baling Karang Village, Sekerek Sub District, Tamiang District, Aceh Province, Indonesia	4°18'35.448"E	97°49'2.144"N	0.30	0.30	5.40	No	09 Jul 2022
	Selamat A	Pengdam Village, Bandar Pusaka Sub District, Tamiang District, Aceh Province, Indonesia	4°18'54.518"E	97°50'18.145"N	0.90	0.90	16.20	No	09 Jul 2022
390	Selamat Abadi	Harum Sari Village, Tamiang Hulu Sub District, Tamiang District, Aceh Province, Indonesia	4°18'42.131"E	97°55'16.062"N	1.50	1.50	27.00	No	09 Jul 2022
391	Suka Makmura	Suka Makmura Village, Sekerek Sub District, Tamiang District, Aceh Province, Indonesia	4°18'16.159"E	97°51'4.432"N	0.87	0.87	15.75	No	09 Jul 2022
	Sem 1	Pematang Duri Village, Sekerek Sub District, Tamiang District, Aceh Province, Indonesia	4°18'22.634"E	97°52'22.611"N	1.50	1.50	27.00	No	09 Jul 2022
	Sem 2	Pematang Duri Village, Sekerek Sub District, Tamiang District, Aceh Province, Indonesia	4°18'9.633"E	97°52'54.594"N	0.40	0.40	7.20	No	09 Jul 2022
393	Shufy Muammar	Pengdam Village, Bandar Pusaka Sub District, Tamiang District, Aceh Province, Indonesia	4°18'15.990"E	97°50'2.981"N	0.30	0.30	5.40	No	09 Jul 2022
394	Sigit Wuljo Puspo Ajudanto	Wonosari Village, Tamiang Hulu Sub District, Tamiang District, Aceh Province, Indonesia	4°18'23.339"E	97°53'46.614"N	1.84	1.84	33.21	No	09 Jul 2022
395	Siran	Harum Sari Village, Tamiang Hulu Sub District, Tamiang District, Aceh Province, Indonesia	4°18'22.427"E	97°54'44.300"N	0.50	0.50	9.00	No	09 Jul 2022
	Si 1	Bengkelang Village, Bandar Pusaka Sub District, Tamiang District, Aceh Province, Indonesia	4°18'33.250"E	97°49'15.232"N	0.25	0.25	4.50	No	09 Jul 2022
	Si 2	Pantai Cempaka Village, Bandar Pusaka Sub District, Tamiang District, Aceh Province, Indonesia	4°17'57.176"E	97°51'21.900"N	0.68	0.68	11.88	No	09 Jul 2022
	Si 3	Pengdam Village, Bandar Pusaka Sub District, Tamiang District, Aceh Province, Indonesia	4°18'16.990"E	97°50'6.256"N	0.52	0.52	9.36	No	09 Jul 2022
399	Si Halimah	Pantai Cempaka Village, Bandar Pusaka Sub District, Tamiang District, Aceh Province, Indonesia	4°17'55.087"E	97°50'34.367"N	1.61	1.61	28.58	No	09 Jul 2022
400	Si Jalaha 1	Juar Village, Sekerek Sub District, Tamiang District, Aceh Province, Indonesia	4°17'35.009"E	97°51'40.423"N	0.36	0.36	6.48	No	09 Jul 2022
	Si Jalaha 2	Juar Village, Sekerek Sub District, Tamiang District, Aceh Province, Indonesia	4°17'31.092"E	97°51'43.636"N	0.55	0.55	9.89	No	09 Jul 2022
	Si 1	Pengdam Village, Bandar Pusaka Sub District, Tamiang District, Aceh Province, Indonesia	4°18'18.142"E	97°48'52.411"N	0.90	0.90	16.20	No	09 Jul 2022
	Si 2	Bengkelang Village, Bandar Pusaka Sub District, Tamiang District, Aceh Province, Indonesia	4°18'49.235"E	97°48'36.205"N	0.75	0.75	13.48	No	09 Jul 2022
	Si 3	Pengdam Village, Bandar Pusaka Sub District, Tamiang District, Aceh Province, Indonesia	4°18'30.226"E	97°49'44.504"N	0.40	0.40	7.20	No	09 Jul 2022
404	Si Sarah	Juar Village, Sekerek Sub District, Tamiang District, Aceh Province, Indonesia	4°17'47.944"E	97°51'52.637"N	2.00	2.00	36.00	No	09 Jul 2022
	Si Barun 1	Bengkelang Village, Bandar Pusaka Sub District, Tamiang District, Aceh Province, Indonesia	4°18'33.169"E	97°49'25.258"N	0.50	0.50	9.07	No	09 Jul 2022
	Si Barun 2	Bengkelang Village, Bandar Pusaka Sub District, Tamiang District, Aceh Province, Indonesia	4°18'40.543"E	97°49'28.644"N	0.21	0.21	3.78	No	09 Jul 2022
	Si Barun 3	Bengkelang Village, Bandar Pusaka Sub District, Tamiang District, Aceh Province, Indonesia	4°18'27.648"E	97°49'21.685"N	1.20	1.20	21.60	No	09 Jul 2022
406	Si Rathayu	Wonosari Village, Tamiang Hulu Sub District, Tamiang District, Aceh Province, Indonesia	4°18'59.308"E	97°54'31.993"N	0.60	0.60	10.80	No	09 Jul 2022
	Si Rathani Dewi	Wonosari Village, Tamiang Hulu Sub District, Tamiang District, Aceh Province, Indonesia	4°18'41.833"E	97°53'36.275"N	1.88	1.88	33.83	No	09 Jul 2022
408	Si Wahyuni	Harum Sari Village, Tamiang Hulu Sub District, Tamiang District, Aceh Province, Indonesia	4°18'59.443"E	97°54'10.464"N	0.94	0.94	16.84	No	09 Jul 2022
	Si Widayat 1	Sulum Village, Sekerek Sub District, Tamiang District, Aceh Province, Indonesia	4°20'54.537"E	97°50'55.675"N	0.98	0.98	17.66	No	09 Jul 2022
	Si Widayat 2	Sulum Village, Sekerek Sub District, Tamiang District, Aceh Province, Indonesia	4°20'43.774"E	97°50'8.223"N	0.98	0.98	17.66	No	09 Jul 2022
410	Sidang	Bengkelang Village, Bandar Pusaka Sub District, Tamiang District, Aceh Province, Indonesia	4°18'17.562"E	97°49'9.788"N	0.50	0.50	9.00	No	09 Jul 2022
411	Sidang 1	Pematang Duri Village, Sekerek Sub District, Tamiang District, Aceh Province, Indonesia	4°18'28.892"E	97°51'28.892"N	2.00	2.00	36.00	No	09 Jul 2022
	Sidang 2	Pematang Duri Village, Sekerek Sub District, Tamiang District, Aceh Province, Indonesia	4°18'32.123"E	97°52'19.855"N	0.20	0.20	3.60	No	09 Jul 2022
413	Sidamanto	Biang Kanda Village, Bandar Pusaka Sub District, Tamiang District, Aceh Province, Indonesia	4°18'42.591"E	97°57'25.432"N	2.06	2.06	37.05	No	09 Jul 2022
414	Sidamanto	Harum Sari Village, Tamiang Hulu Sub District, Tamiang District, Aceh Province, Indonesia	4°18'48.733"E	97°50'7.989"N	2.00	2.00	36.00	No	09 Jul 2022
415	Sidamanto	Pantai Cempaka Village, Bandar Pusaka Sub District, Tamiang District, Aceh Province, Indonesia	4°17'27.478"E	97°51'2.240"N	1.03	1.03	18.54	No	09 Jul 2022
416	Sidayadi	Sulum Village, Sekerek Sub District, Tamiang District, Aceh Province, Indonesia	4°18'49.976"E	97°51'24.512"N	0.51	0.51	9.14	No	09 Jul 2022
417	Sidman A	Harum Sari Village, Tamiang Hulu Sub District, Tamiang District, Aceh Province, Indonesia	4°18'12.478"E	97°54'38.068"N	1.00	1.00	18.00	No	09 Jul 2022
	Sidman B	Pantai Cempaka Village, Bandar Pusaka Sub District, Tamiang District, Aceh Province, Indonesia	4°18'16.215"E	97°50'54.151"N	0.46	0.46	8.28	No	09 Jul 2022
419	Sugimen	Wonosari Village, Tamiang Hulu Sub District, Tamiang District, Aceh Province, Indonesia	4°18'13.520"E	97°53'52.929"N	0.85	0.85	15.30	No	09 Jul 2022
420	Sugimen	Wonosari Village, Tamiang Hulu Sub District, Tamiang District, Aceh Province, Indonesia	4°18'21.910"E	97°53'9.840"N	1.05	1.05	18.90	No	09 Jul 2022
420	Sugran	Wonosari Village, Tamiang Hulu Sub District, Tamiang District, Aceh Province, Indonesia	4°18'13.451"E	97°53'33.473"N	2.00	2.00	36.00	No	09 Jul 2022
421	Sugran S	Wonosari Village, Tamiang Hulu Sub District, Tamiang District, Aceh Province, Indonesia	4°18'52.469"E	97°54'15.039"N	1.30	1.30	23.40	No	09 Jul 2022
	Sugri 1	Biang Kanda Village, Bandar Pusaka Sub District, Tamiang District, Aceh Province, Indonesia	4°18'56.021"E	97°57'29.066"N	2.30	2.30	41.40	No	09 Jul 2022
	Sugri 2	Biang Kanda Village, Bandar Pusaka Sub District, Tamiang District, Aceh Province, Indonesia	4°18'18.663"E	97°57'41.170"N	0.02	0.02	0.30	No	09 Jul 2022
423	Suhan	Harum Sari Village, Tamiang Hulu Sub District, Tamiang District, Aceh Province, Indonesia	4°18'54.122"E	97°55'14.877"N	1.06	1.06	19.04	No	09 Jul 2022
424	Sulheman A 1	Sulum Village, Sekerek Sub District, Tamiang District, Aceh Province, Indonesia	4°18'49.875"E	97°51'19.940"N	0.11	0.11	2.06	No	09 Jul 2022
	Sulheman A 2	Sulum Village, Sekerek Sub District, Tamiang District, Aceh Province, Indonesia	4°18'57.455"E	97°52'23.929"N	0.22	0.22	3.89	No	09 Jul 2022
	Sulheman B 1	Juar Village, Sekerek Sub District, Tamiang District, Aceh Province, Indonesia	4°18'34.144"E	97°51'39.889"N	0.42	0.42	7.56	No	09 Jul 2022
	Sulheman B 2	Juar Village, Sekerek Sub District, Tamiang District, Aceh Province, Indonesia	4°18'29.185"E	97°51'41.117"N	0.41	0.41	7.34	No	09 Jul 2022
	Sulheman C, SPd 1	Biang Kanda Village, Bandar Pusaka Sub District, Tamiang District, Aceh Province, Indonesia	4°18'36.093"E	97°56'22.740"N	0.59	0.59	10.65	No	09 Jul 2022
	Sulheman C, SPd 2	Biang Kanda Village, Bandar Pusaka Sub District, Tamiang District, Aceh Province, Indonesia	4°18'54.373"E	97°56'35.319"N	0.79	0.79	14.26		

460	Sunadi	Harum Sari Village, Tamiang Hulu Sub District, Tamiang District, Aceh Province, Indonesia	4° 14' 32.255" E	97° 55' 6.836" N	1.10	1.10	19.80	No	09 Jul 2022
461	Suarani	Wonosan Village, Tamiang Hulu Sub District, Tamiang District, Aceh Province, Indonesia	4° 14' 16.380" E	97° 54' 18.305" N	0.18	0.18	3.24	No	09 Jul 2022
462	Suarat	Wonosan Village, Tamiang Hulu Sub District, Tamiang District, Aceh Province, Indonesia	4° 13' 58.957" E	97° 54' 31.008" N	0.66	0.66	11.88	No	09 Jul 2022
463	Suif 1	Sulum Village, Sekerak Sub District, Tamiang District, Aceh Province, Indonesia	4° 18' 51.106" E	97° 53' 6.884" N	1.85	1.85	33.39	No	09 Jul 2022
463	Suif 2	Sulum Village, Sekerak Sub District, Tamiang District, Aceh Province, Indonesia	4° 18' 10.788" E	97° 54' 25.772" N	0.58	0.58	10.44	No	09 Jul 2022
463	Suif 3	Sulum Village, Sekerak Sub District, Tamiang District, Aceh Province, Indonesia	4° 18' 14.329" E	97° 53' 28.369" N	1.31	1.31	23.54	No	09 Jul 2022
464	Suriya Saputra	Harum Sari Village, Tamiang Hulu Sub District, Tamiang District, Aceh Province, Indonesia	4° 18' 54.549" E	97° 51' 16.222" N	1.98	1.98	35.70	No	09 Jul 2022
465	Sutami	Wonosan Village, Tamiang Hulu Sub District, Tamiang District, Aceh Province, Indonesia	4° 15' 51.687" E	97° 53' 2.147" N	2.10	2.10	37.80	No	09 Jul 2022
466	Suif 1	Harum Sari Village, Tamiang Hulu Sub District, Tamiang District, Aceh Province, Indonesia	4° 14' 8.349" E	97° 55' 19.554" N	1.00	1.00	18.00	No	09 Jul 2022
466	Suif 2	Harum Sari Village, Tamiang Hulu Sub District, Tamiang District, Aceh Province, Indonesia	4° 14' 21.460" E	97° 55' 7.779" N	0.80	0.80	14.40	No	09 Jul 2022
467	Sutresno 1	Harum Sari Village, Tamiang Hulu Sub District, Tamiang District, Aceh Province, Indonesia	4° 12' 56.559" E	97° 54' 14.138" N	1.00	1.00	18.00	No	09 Jul 2022
467	Sutresno 2	Harum Sari Village, Tamiang Hulu Sub District, Tamiang District, Aceh Province, Indonesia	4° 12' 59.964" E	97° 54' 15.120" N	2.00	2.00	36.00	No	09 Jul 2022
468	Sutrisno	Blang Kandi Village, Bandar Pusaka Sub District, Tamiang District, Aceh Province, Indonesia	4° 14' 8.330" E	97° 57' 27.656" N	0.78	0.78	14.12	No	09 Jul 2022
469	Suwardi	Sulum Village, Sekerak Sub District, Tamiang District, Aceh Province, Indonesia	4° 19' 4.977" E	97° 51' 8.738" N	1.25	1.25	22.46	No	09 Jul 2022
470	Suwar A	Blang Kandi Village, Bandar Pusaka Sub District, Tamiang District, Aceh Province, Indonesia	4° 14' 58.388" E	97° 57' 29.150" N	0.02	0.02	0.32	No	09 Jul 2022
471	Suwar B 1	Wonosan Village, Tamiang Hulu Sub District, Tamiang District, Aceh Province, Indonesia	4° 13' 51.042" E	97° 54' 10.086" N	0.68	0.68	12.32	No	09 Jul 2022
471	Suwar B 2	Wonosan Village, Tamiang Hulu Sub District, Tamiang District, Aceh Province, Indonesia	4° 13' 29.148" E	97° 53' 56.300" N	2.21	2.21	39.74	No	09 Jul 2022
472	Suwana	Wonosan Village, Tamiang Hulu Sub District, Tamiang District, Aceh Province, Indonesia	4° 14' 53.870" E	97° 53' 44.129" N	1.27	1.27	22.77	No	09 Jul 2022
473	Suwarno	Harum Sari Village, Tamiang Hulu Sub District, Tamiang District, Aceh Province, Indonesia	4° 14' 19.177" E	97° 55' 13.243" N	0.58	0.58	10.37	No	09 Jul 2022
474	Suwati	Sulum Village, Sekerak Sub District, Tamiang District, Aceh Province, Indonesia	4° 19' 8.929" E	97° 51' 7.892" N	0.73	0.73	13.21	No	09 Jul 2022
475	Syafi	Pematang Duri Village, Sekerak Sub District, Tamiang District, Aceh Province, Indonesia	4° 19' 11.941" E	97° 52' 31.892" N	2.00	2.00	36.00	No	09 Jul 2022
476	Syahdan 1	Juar Village, Sekerak Sub District, Tamiang District, Aceh Province, Indonesia	4° 17' 38.385" E	97° 51' 41.491" N	4.23	4.23	76.14	No	09 Jul 2022
477	Syahdan 2	Juar Village, Sekerak Sub District, Tamiang District, Aceh Province, Indonesia	4° 17' 38.721" E	97° 51' 33.619" N	0.27	0.27	4.81	No	09 Jul 2022
477	Syahdan Pranata	Pantia Cempaka Village, Bandar Pusaka Sub District, Tamiang District, Aceh Province, Indonesia	4° 16' 53.556" E	97° 50' 46.789" N	1.83	1.83	32.94	No	09 Jul 2022
478	Syahri	Pantia Cempaka Village, Bandar Pusaka Sub District, Tamiang District, Aceh Province, Indonesia	4° 17' 37.831" E	97° 52' 1.021" N	0.20	0.20	3.60	No	09 Jul 2022
479	Syahri Pranata	Pantia Cempaka Village, Bandar Pusaka Sub District, Tamiang District, Aceh Province, Indonesia	4° 17' 47.333" E	97° 51' 7.296" N	0.30	0.30	5.40	No	09 Jul 2022
480	Syaikh Naman 1	Pematang Duri Village, Sekerak Sub District, Tamiang District, Aceh Province, Indonesia	4° 18' 14.724" E	97° 52' 56.177" N	0.50	0.50	9.00	No	09 Jul 2022
480	Syaikh Naman 2	Kampung Duri Village, Rantau Sub District, Tamiang District, Aceh Province, Indonesia	4° 19' 29.253" E	97° 52' 46.858" N	0.28	0.28	4.98	No	09 Jul 2022
481	Syam A1	Sulum Village, Sekerak Sub District, Tamiang District, Aceh Province, Indonesia	4° 19' 18.705" E	97° 51' 11.497" N	1.31	1.31	23.62	No	09 Jul 2022
481	Syam A2	Sulum Village, Sekerak Sub District, Tamiang District, Aceh Province, Indonesia	4° 19' 14.113" E	97° 51' 4.866" N	1.31	1.31	23.62	No	09 Jul 2022
481	Syam A3	Sulum Village, Sekerak Sub District, Tamiang District, Aceh Province, Indonesia	4° 19' 16.818" E	97° 51' 8.442" N	1.31	1.31	23.62	No	09 Jul 2022
482	Syaip 1	Blang Kandi Village, Bandar Pusaka Sub District, Tamiang District, Aceh Province, Indonesia	4° 14' 8.226" E	97° 57' 3.686" N	0.32	0.32	5.76	No	09 Jul 2022
482	Syaip 2	Blang Kandi Village, Bandar Pusaka Sub District, Tamiang District, Aceh Province, Indonesia	4° 14' 32.625" E	97° 57' 30.023" N	0.12	0.12	2.08	No	09 Jul 2022
483	Syaikhuddin A1	Sulum Village, Sekerak Sub District, Tamiang District, Aceh Province, Indonesia	4° 19' 26.107" E	97° 51' 21.053" N	1.73	1.73	31.13	No	09 Jul 2022
483	Syaikhuddin A2	Sulum Village, Sekerak Sub District, Tamiang District, Aceh Province, Indonesia	4° 19' 18.065" E	97° 51' 4.703" N	1.65	1.65	29.52	No	09 Jul 2022
484	Syaikhuddin C	Pantia Cempaka Village, Bandar Pusaka Sub District, Tamiang District, Aceh Province, Indonesia	4° 17' 29.625" E	97° 52' 38.839" N	0.38	0.38	6.84	No	09 Jul 2022
485	Syaikhudin	Juar Village, Sekerak Sub District, Tamiang District, Aceh Province, Indonesia	4° 18' 11.818" E	97° 51' 36.938" N	1.00	1.00	18.00	No	09 Jul 2022
486	Syaripudin 1	Bengkelang Village, Bandar Pusaka Sub District, Tamiang District, Aceh Province, Indonesia	4° 18' 44.037" E	97° 48' 52.452" N	2.80	2.80	50.40	No	09 Jul 2022
486	Syaripudin 2	Bengkelang Village, Bandar Pusaka Sub District, Tamiang District, Aceh Province, Indonesia	4° 19' 24.492" E	97° 48' 59.333" N	3.00	3.00	54.00	No	09 Jul 2022
487	Syaripudin 3	Baling Karang Village, Sekerak Sub District, Tamiang District, Aceh Province, Indonesia	4° 18' 56.333" E	97° 49' 11.327" N	1.75	1.75	31.50	No	09 Jul 2022
488	T. A. L. Muslim	Pantia Cempaka Village, Bandar Pusaka Sub District, Tamiang District, Aceh Province, Indonesia	4° 16' 50.015" E	97° 51' 40.188" N	1.50	1.50	27.00	No	09 Jul 2022
488	Talep Suhendra	Harum Sari Village, Tamiang Hulu Sub District, Tamiang District, Aceh Province, Indonesia	4° 13' 6.348" E	97° 54' 45.640" N	1.00	1.00	18.00	No	09 Jul 2022
489	Tamo	Wonosan Village, Tamiang Hulu Sub District, Tamiang District, Aceh Province, Indonesia	4° 19' 18.604" E	97° 53' 28.627" N	0.83	0.83	15.00	No	09 Jul 2022
490	Taufik Satriawan	Wonosan Village, Tamiang Hulu Sub District, Tamiang District, Aceh Province, Indonesia	4° 19' 52.760" E	97° 53' 51.790" N	1.32	1.32	23.76	No	09 Jul 2022
491	Teti Embun 1	Blang Kandi Village, Bandar Pusaka Sub District, Tamiang District, Aceh Province, Indonesia	4° 19' 51.325" E	97° 57' 28.244" N	0.33	0.33	5.98	No	09 Jul 2022
491	Teti Embun 2	Blang Kandi Village, Bandar Pusaka Sub District, Tamiang District, Aceh Province, Indonesia	4° 19' 55.054" E	97° 57' 25.174" N	0.23	0.23	4.23	No	09 Jul 2022
492	Tijah 1	Bengkelang Village, Bandar Pusaka Sub District, Tamiang District, Aceh Province, Indonesia	4° 18' 32.434" E	97° 49' 8.704" N	1.00	1.00	18.00	No	09 Jul 2022
492	Tijah 2	Bengkelang Village, Bandar Pusaka Sub District, Tamiang District, Aceh Province, Indonesia	4° 18' 37.595" E	97° 49' 13.637" N	1.60	1.60	28.80	No	09 Jul 2022
493	Titi Tamala	Wonosan Village, Tamiang Hulu Sub District, Tamiang District, Aceh Province, Indonesia	4° 13' 57.794" E	97° 54' 33.237" N	0.66	0.66	11.88	No	09 Jul 2022
494	Tuah	Pengdam Village, Bandar Pusaka Sub District, Tamiang District, Aceh Province, Indonesia	4° 18' 25.817" E	97° 50' 21.544" N	3.20	3.20	57.60	No	09 Jul 2022
495	Tuah D	Pengdam Village, Bandar Pusaka Sub District, Tamiang District, Aceh Province, Indonesia	4° 18' 21.300" E	97° 48' 54.224" N	1.01	1.01	18.22	No	09 Jul 2022
496	Tuigun	Harum Sari Village, Tamiang Hulu Sub District, Tamiang District, Aceh Province, Indonesia	4° 14' 12.834" E	97° 55' 19.463" N	0.80	0.80	14.40	No	09 Jul 2022
497	Tugimen 2	Harum Sari Village, Tamiang Hulu Sub District, Tamiang District, Aceh Province, Indonesia	4° 18' 24.041" E	97° 55' 26.320" N	0.56	0.56	10.13	No	09 Jul 2022
497	Tugun	Wonosan Village, Tamiang Hulu Sub District, Tamiang District, Aceh Province, Indonesia	4° 14' 42.330" E	97° 53' 7.296" N	1.50	1.50	27.00	No	09 Jul 2022
498	Tuliran	Wonosan Village, Tamiang Hulu Sub District, Tamiang District, Aceh Province, Indonesia	4° 14' 48.464" E	97° 53' 47.537" N	1.45	1.45	26.09	No	09 Jul 2022
499	Ucak Jemala	Pengdam Village, Bandar Pusaka Sub District, Tamiang District, Aceh Province, Indonesia	4° 18' 17.728" E	97° 50' 7.867" N	0.56	0.56	10.08	No	09 Jul 2022
500	Uji Hamdani	Juar Village, Sekerak Sub District, Tamiang District, Aceh Province, Indonesia	4° 18' 27.276" E	97° 51' 37.814" N	0.37	0.37	6.66	No	09 Jul 2022
501	Umar 1	Pematang Duri Village, Sekerak Sub District, Tamiang District, Aceh Province, Indonesia	4° 18' 58.429" E	97° 52' 16.419" N	0.70	0.70	12.60	No	09 Jul 2022
501	Umar 2	Pematang Duri Village, Sekerak Sub District, Tamiang District, Aceh Province, Indonesia	4° 18' 59.699" E	97° 52' 17.603" N	0.02	0.02	0.36	No	09 Jul 2022
501	Umar 3	Pematang Duri Village, Sekerak Sub District, Tamiang District, Aceh Province, Indonesia	4° 19' 34.261" E	97° 52' 30.974" N	1.00	1.00	18.00	No	09 Jul 2022
502	Umar Mukhtar	Wonosan Village, Tamiang Hulu Sub District, Tamiang District, Aceh Province, Indonesia	4° 19' 35.631" E	97° 53' 31.864" N	1.20	1.20	21.60	No	09 Jul 2022
503	Umar Wati	Bengkelang Village, Bandar Pusaka Sub District, Tamiang District, Aceh Province, Indonesia	4° 18' 36.180" E	97° 49' 21.581" N	0.50	0.50	9.00	No	09 Jul 2022
504	Umi Kalsum	Harum Sari Village, Tamiang Hulu Sub District, Tamiang District, Aceh Province, Indonesia	4° 13' 19.240" E	97° 54' 43.652" N	0.90	0.90	16.14	No	09 Jul 2022
505	Unjilawati	Wonosan Village, Tamiang Hulu Sub District, Tamiang District, Aceh Province, Indonesia	4° 13' 54.916" E	97° 54' 11.648" N	0.70	0.70	12.60	No	09 Jul 2022
506	Usman 1	Juar Village, Sekerak Sub District, Tamiang District, Aceh Province, Indonesia	4° 18' 21.456" E	97° 51' 59.267" N	0.47	0.47	8.42	No	09 Jul 2022
506	Usman 2	Juar Village, Sekerak Sub District, Tamiang District, Aceh Province, Indonesia	4° 17' 43.766" E	97° 51' 53.104" N	0.46	0.46	8.28	No	09 Jul 2022
506	Usman 3	Juar Village, Sekerak Sub District, Tamiang District, Aceh Province, Indonesia	4° 18' 6.742" E	97° 52' 6.991" N	0.63	0.63	11.34	No	09 Jul 2022
507	Usman S 1	Pematang Duri Village, Sekerak Sub District, Tamiang District, Aceh Province, Indonesia	4° 18' 41.841" E	97° 52' 22.971" N	0.04	0.04	0.72	No	09 Jul 2022
507	Usman S 2	Pematang Duri Village, Sekerak Sub District, Tamiang District, Aceh Province, Indonesia	4° 18' 40.215" E	97° 52' 22.348" N	0.50	0.50	9.00	No	09 Jul 2022
507	Usman S 3	Pematang Duri Village, Sekerak Sub District, Tamiang District, Aceh Province, Indonesia	4° 18' 11.280" E	97° 52' 49.510" N	4.00	4.00	72.00	No	09 Jul 2022
508	Waga	Wonosan Village, Tamiang Hulu Sub District, Tamiang District, Aceh Province, Indonesia	4° 14' 27.245" E	97° 53' 41.272" N	0.51	0.51	9.25	No	09 Jul 2022
509	Wagimin	Wonosan Village, Tamiang Hulu Sub District, Tamiang District, Aceh Province, Indonesia	4° 14' 4.237" E	97° 54' 19.914" N	0.62	0.62	11.16	No	09 Jul 2022
510	Wagino 1	Pematang Duri Village, Sekerak Sub District, Tamiang District, Aceh Province, Indonesia	4° 18' 24.433" E	97° 52' 41.336" N	0.20	0.20	3.60	No	09 Jul 2022
510	Wagino 2	Pematang Duri Village, Sekerak Sub District, Tamiang District, Aceh Province, Indonesia	4° 18' 24.747" E	97° 52' 43.266" N	0.50	0.50	9.00	No	09 Jul 2022
511	Wagiran	Wonosan Village, Tamiang Hulu Sub District, Tamiang District, Aceh Province, Indonesia	4° 16' 2.288" E	97° 53' 45.864" N	1.00	1.00	18.00	No	09 Jul 2022
512	Wagyan	Wonosan Village, Tamiang Hulu Sub District, Tamiang District, Aceh Province, Indonesia	4° 14' 13.047" E	97° 54' 13.358" N	0.78	0.78	14.04	No	09 Jul 2022
513	Wahyu Nanda	Pantia Cempaka Village, Bandar Pusaka Sub District, Tamiang District, Aceh Province, Indonesia	4° 17' 43.975" E	97° 50' 33.705" N	3.57	3.57	64.22	No	09 Jul 2022
514	Wahyudin	Wonosan Village, Tamiang Hulu Sub District, Tamiang District, Aceh Province, Indonesia	4° 14' 15.239" E	97° 54' 20.466" N	1.20	1.20	21.60	No	09 Jul 2022
515	Wahmarnah	Pengdam Village, Bandar Pusaka Sub District, Tamiang District, Aceh Province, Indonesia	4° 18' 18.063" E	97° 50' 12.125" N	1.43	1.43	25.74	No	09 Jul 2022
516	Warseam	Harum Sari Village, Tamiang Hulu Sub District, Tamiang District, Aceh Province, Indonesia	4° 14' 49.964" E	97° 55' 10.413" N	0.38	0.38	6.75	No	09 Jul 2022
517	Wesmin	Harum Sari Village, Tamiang Hulu Sub District, Tamiang District, Aceh Province, Indonesia	4° 14' 27.867" E	97° 55' 33.032" N	0.96	0.96	17.02	No	09 Jul 2022
518	Welman	Pengdam Village, Bandar Pusaka Sub District, Tamiang District, Aceh Province, Indonesia	4° 18' 9.279" E	97° 50' 28.182" N	1.82	1.82	32.76	No	09 Jul 2022
519	Wibi April Diriansa	Wonosan Village, Tamiang Hulu Sub District, Tamiang District, Aceh Province, Indonesia	4° 14' 36.964" E	97° 53' 46.283" N	0.34	0.34	6.12	No	09 Jul 2022
520	Widodo	Wonosan Village, Tamiang Hulu Sub District, Tamiang District, Aceh Province, Indonesia	4° 14' 51.472" E	97° 52' 32.526" N	1.54	1.54	27.72	No	09 Jul 2022
521	Windi Agustiani	Wonosan Village, Tamiang Hulu Sub District, Tamiang District, Aceh Province, Indonesia	4° 19' 39						

Peta Lokasi untuk unit sertifikasi adalah:



Mutuagung Lestari, atau yang disebut juga Mutu Certification International (MUTU), bermula sebagai lembaga inspeksi, laboratorium dan sertifikasi sejak tahun 1990. Merupakan Perusahaan Private Nasional yang didukung oleh sumber daya manusia yang profesional dengan komitmen tinggi serta telah diakui secara Nasional dan Internasional. Sejak Juni 2003, MUTU telah mendapatkan pengakuan dari Menteri Pertanian, Kehutanan dan Perikanan Jepang sebagai Organisasi Sertifikasi Asing yang terdaftar atau Registered Overseas Certification Body (ROCB) yang bertugas memberikan sertifikat terhadap produk yang memenuhi persyaratan Japan Agricultural Standard (JAS), dimana wilayah yang dibawah meliputi Indonesia, Myanmar, Kamboja, Malaysia, Vietnam, Timor Leste, Philipina, Papua Nugini, dan China. Dengan pengakuan ini, MUTU merupakan anggota ROCB pertama di Asia. Komite Akreditasi Nasional (KAN) telah mengakreditasi MUTU sebagai Lembaga sertifikasi Sistem Manajemen Mutu (ISO 9001:2015) dan Lembaga Sertifikasi Sistem Manajemen Lingkungan (ISO 14001:2015). Lembaga Ekolabel Indonesia (LEI) juga telah mengakreditasi MUTU sebagai Lembaga sertifikasi Pengelolaan Hutan Lestari, Lembaga Sertifikasi Indonesian Sustainable Palm Oil (ISPO). Sejak Maret 2014 MUTU telah terakreditasi oleh Accreditation Services International (ASI) sebagai lembaga sertifikasi RSPO.

Tim auditor untuk penilaian sertifikasi akan dipimpin oleh **Moh. Arif Yusni** dan tim auditor lainnya dari PT Mutuagung Lestari, terdiri dari:

Tim Auditor	Peran Audit	Kualifikasi dan Pengalaman
Moh Arif Yusni	Legalitas, TBP, <i>Partial Certification</i> , Aspek	Warga Negara Indonesia. Sarjana Pertanian, jurusan Proteksi Tanaman. Memiliki pengalaman bekerja sebagai staff operasional di salah satu perusahaan perkebunan kelapa sawit

	Lingkungan, Manajemen Limbah, GHG dan Konservasi	swasta di Indonesia tahun 2010 - 2012. Telah mengikuti beberapa pelatihan, yaitu: ISO 19011, ISO 9001; ISO 14001, SA 8000, pelayihan lead auditor RSPO tahun 2014, ISPO lead auditor, Ahli K3, Auditor K3 dibawah Pemerintah No.50/2012, SCCS, dan pembaharuan pelatihan lead auditor RSPO dan ISPO tahun 2021. Telah melakukan audit ISPO, RSPO dan MSPO sebagai auditor dan lead auditor dengan keahlian di bidang praktik manajemen terbaik untuk perkebunan dan pabrik, legalitas, kesejahteraan pekerja, keselamatan, sosial, lingkungan, konservasi, transparansi, rencana pengelolaan ekonomi jangka panjang dan rantai pasokan untuk aspek pabrik kelapa sawit.
Radytio Puspanjana	Lingkungan, HCV, Sosial, dan Aspek GHG	Warga Negara Indonesia. Sarjana Agrikultur, Jurusan Ilmu Tanah, Fakultas Agrikultur. Pernah bekerja sebagai pegawai honorer di Dinas Perkebunan Provinsi Riau pada bagian perkebunan besar selama 1 tahun. Mengikuti pelatihan Survey and Mapping (GIS) yang diselenggarakan oleh National GMTI, pelatihan auditor ISPO, pelatihan auditor ISO 9001/2008, pelatihan auditor ISO 1400/2004, IHT Sistem Informasi Geospasial, IHT Nilai Konservasi Tinggi, IHT Penilaian Dampak Lingkungan, IHT Gas Rumah Kaca dan Pelatihan Lead Auditor RSPO oleh Checkmark. Sejak 2015 telah mengikuti beberapa audit sebagai auditor Praktik Terbaik Budidaya Ketenagakerjaan dan Lingkungan.
Kiki Fadli	Praktik Terbaik Budidaya Ketenagakerjaan dan OHS	Sarjana Teknik Agrikultural, Program Studi Teknik Agrikultular. Memiliki pengalaman kerja di perkebunan kelapa sawit berkelanjutan swasta dan milik Negara. Telah mengikuti pelatihan Lead Auditor ISPO, Lead Auditor RSPO, General OHS Expert, ISO 9001:2008, ISO 14001:2015, ISO 17021, ISO 17065, HCV, SMK3.

Untuk membantu pelaksanaan proses penilaian di lokasi tersebut, PT. Mutuagung Lestari mengundang para pihak untuk memberikan komentar terhadap hal-hal yang menjadi poin penilaian seperti di bawah ini:

- Kelestarian lingkungan di sekitar kebun atau pabrik termasuk penggunaan pestisida dan penanggulangan limbah
- Keanekaragaman hayati di sekitar kebun dan pabrik serta lingkungan sekitarnya
- Peluang Kerja
- Kontribusi perusahaan terhadap pembangunan daerah
- Kondisi perumahan, sanitasi, fasilitas dan sarana pendukung pendidikan.
- Permasalahan lainnya yang berkaitan dengan sertifikasi.

Komentar akan diterima dalam waktu 30 hari setelah surat ini dikeluarkan untuk kami pertimbangkan dalam proses penilaian. Dan isilah formulir di bawah ini serta lampirkan pada lembaran komentar sebagai data pribadi anda, dan untuk kami melakukan klarifikasi terhadap saran atau komentar yang anda berikan.

Nama : _____
 Alamat : _____
 Nomor Telepon : _____
 Nomor Fax : _____

Bila dalam memberikan komentar data pribadi anda tidak ingin dipublikasikan. Anda dapat menuliskan kata 'RAHASIA' dalam surat komentar anda. Silahkan kirimkan komentar anda kepada :

PT MUTUAGUNG LESTARI

Leonada

Operations Manager

Jl. Raya Bogor Km. 33,5 No. 19
Cimanggis, Depok - Indonesia 16953
Telp. (+62-21) 8740202
Fax. (+62-21) 87740745/46
agri@mutucertification.com
web : www.mutucertification.com

KOPERASI PRODUSEN BUMI SAWIT TAMIANG

Irianto

Ketua Koperasi

Munyang Keramat Street No.21, Dusun Alur Hitam, Serba
Village, Bandar Pusaka Sub District, Aceh Tamiang District,
Aceh Province, Indonesia, 24478
Telephone: (+62) 812 6591 9236
bumisawittamiang@gmail.com

Kami ucapkan terima kasih atas segala komentar yang anda berikan.

Hormat kami,



mutu
international

Irham Budiman

Direktur PT Mutuagung Lestari