

Date: 23 Oktober 2023

**Notification of RSPO Initial Certification of Kharisma Inti Usaha POM PT Kharisma Inti Usaha subsidiary of Genting Plantations Group (RSPO Membership1-0086-06-000-00, 14 November 2006)**

Dear Stakeholders,

Genting Plantations Group has applied to Mutuagung Lestari and will conduct Initial Certification at PT Kharisma Inti Usaha with scope Kharisma Inti Usaha POM and its supply based, located at Pandahan Village, Tapin Tengah District, Tapin Regency, Kalimantan Selatan Province, Indonesia against the requirement of Indonesia National Interpretation of the RSPO Principles and Criteria for the Production of Sustainable Palm Oil 2018 (INANI 2020).

Kharisma Inti Usaha POM – PT Kharisma Inti Usaha has successfully been registered in the Palm Trace IT platform with member RSPO\_PO1000008149. The organization is a member of RSPO and has been taking an active role in the RSPO certification processes and planned to maintain RSPO Sustainable Palm Oil requirement for all of its production. Mutuagung Lestari has arranged to conduct the assessment to the organization which operating 1 (one) palm oil mill, 4 (four) estates on **11 December to 15 December 2023**.

Information on production data of Mill and estates to be assessed are as follows:

| Name of Mill | Location                                                                                       | GPS Reference  |                   | Mill Capacity (Tonnes/hour) | Annual Volume            |                         |
|--------------|------------------------------------------------------------------------------------------------|----------------|-------------------|-----------------------------|--------------------------|-------------------------|
|              |                                                                                                | Latitude       | Longitude         |                             | CPO Output (Tonnes/year) | PK Output (Tonnes/year) |
| KOM          | Pandahan Village, Tapin Tengah District, Tapin Regency, Kalimantan Selatan Province, Indonesia | S 3° 0' 10.76" | E 114° 56' 12.68" | 60                          | 45,995.25                | 10,179.79               |

\*Sources: Data Production period of 12 months

| Name of Estate | Location                                                                                       | GPS Reference   |                   | Total Area (Ha) | Production Area (Ha) | FFB Production (tonnes/year) |
|----------------|------------------------------------------------------------------------------------------------|-----------------|-------------------|-----------------|----------------------|------------------------------|
|                |                                                                                                | Latitude        | Longitude         |                 |                      |                              |
| KIU1           | Pandahan Village, Tapin Tengah District, Tapin Regency, Kalimantan Selatan Province, Indonesia | S 2° 59' 34.98" | E 114° 54' 2.67"  | 3,576.47        | 3,254.74             | 30,178.63                    |
| KIU2           | Pandahan Village, Tapin Tengah District, Tapin Regency, Kalimantan Selatan Province, Indonesia | S 3° 0' 6.46"   | E 114° 56' 17.53" | 3,884.05        | 3,642.59             | 36,487.23                    |
| KIU3           | Pandahan Village, Tapin Tengah District, Tapin Regency, Kalimantan Selatan Province, Indonesia | S 3° 3' 27.71"  | E 114° 56' 33.24" | 3,845.26        | 3,563.22             | 11,755.57                    |

|              |                                                                                                            |                |                  |                  |                  |                  |
|--------------|------------------------------------------------------------------------------------------------------------|----------------|------------------|------------------|------------------|------------------|
| KIU4         | Pandahan Village,<br>Tapin Tengah District,<br>Tapin Regency,<br>Kalimantan Selatan<br>Province, Indonesia | S 3° 5' 28.16" | E 115° 0' 48.54" | 3,355.22         | 3,166.90         | 6,413.18         |
| <b>Total</b> |                                                                                                            |                |                  | <b>14,661.00</b> | <b>13,627.45</b> | <b>84,834.61</b> |

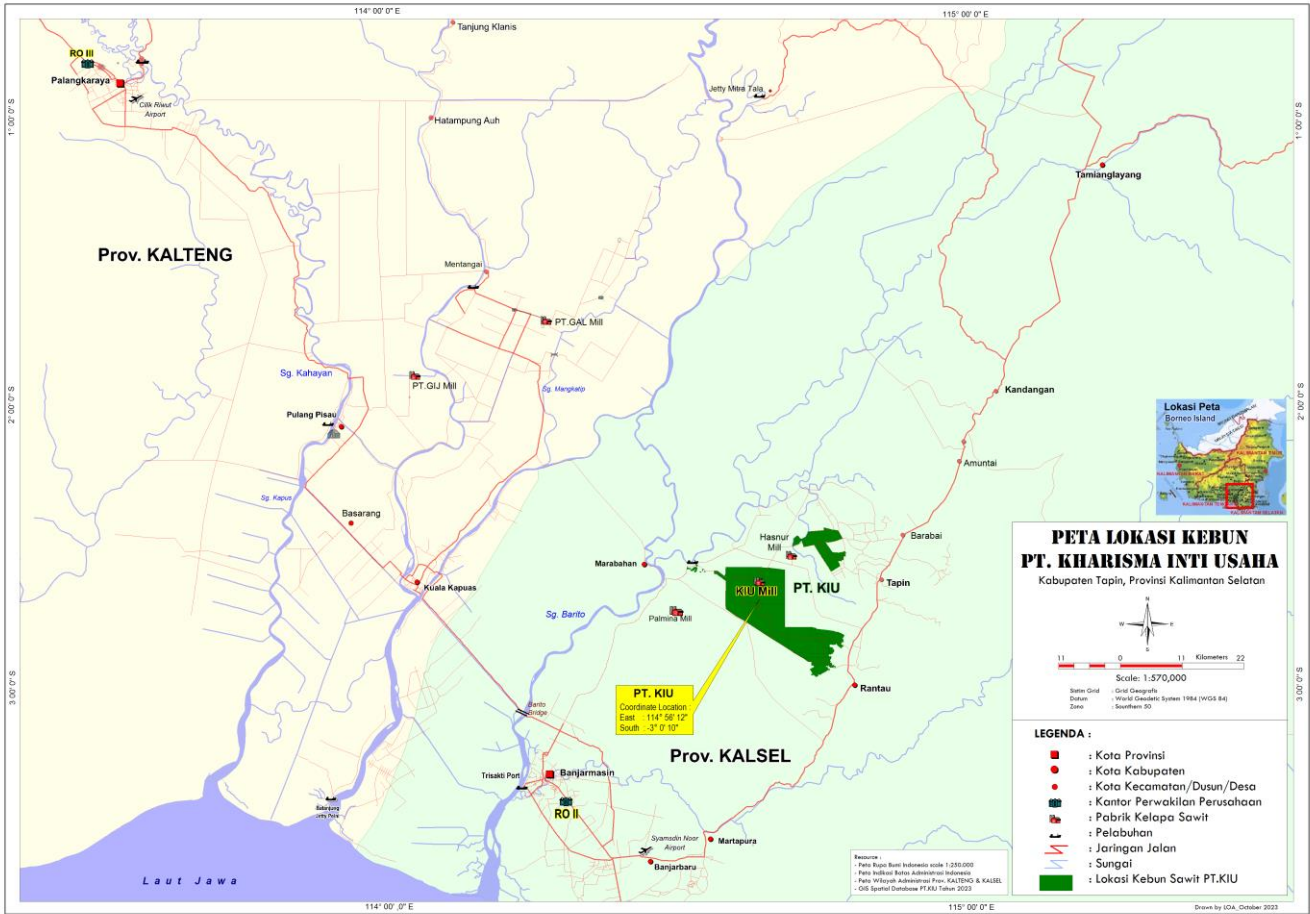
\*Sources: Data Production period of 12 months

KIU Oil Mill – PT. Kharisma Inti Usaha Subsidiary of Genting Plantations Is a palm oil plantation and processing company located in Pandahan Village, Tapin Tengah District, Tapin Regency, South Kalimantan Province. KIU Oil Mill operates 1 (one) Palm Oil Processing Plant with a capacity of 60 tonnes/hour using the Mass Balance supply chain model. KIU Oil Mill - PT. Kharisma Inti Usaha has been successfully registered on the Palm Trace IT platform with the number RSPO\_PO1000008149

The new planting of PT KIU was previously carried out by an old company that was not an RSPO member. PT KIU was acquired by Genting Plantation on 10 October 2017. Since 2017 there have been no new plantings. So that new plantings do not undergo the NPP process.

LUCA PT KIU has received PASS status from the RSPO on October 21 2022, with an FCL of 0 Ha and an Environmental remediation area of 108.38 Ha. Furthermore, PT KIU has prepared RaCP annex 8 and has been approved by the RSPO.

Location maps of the unit certifications are:



PT Mutuagung Lestari, is also known Mutu Certification International (MUTU), and has started as inspection, laboratory, and Certification body since 1990. As a private national company and supported with highly committed professionals, MUTU has gained recognition nationally and internationally. Since June 2003, MUTU has received recognition from the Ministry of Agriculture, Forestry, and Fishery of Japan (MAFF) as registered overseas certification body (ROCB). MUTU certify and mark products with Japan agriculture standard (JAS) covering Indonesia, Myanmar, Cambodia, Malaysia, Vietnam, Timor Leste, Philippines, Papua New Guinea and China. MUTU is the first ROCB in Asia. National Accreditation Committee has accredited MUTU as Quality Management System certification body (ISO 9001:2015) and Environmental Management System certification body (ISO 14001:2015). Indonesia Ecolabelling Institute (LEI) has also accredited MUTU as Sustainable Forest Management System certification body, Certification Body of Indonesian Sustainable Palm Oil (ISPO), Since March 2014, MUTU has been accredited by ASI (Accreditation Services International) as a RSPO certification body.

The auditor team for the certification assessment will be led of **Rahmat Abdiansyah** and other team auditor from PT Mutuagung Lestari, consist of:

| Audit Team        | Role/ Area of Requirement                               | Qualification and Experience                                                                                                                                                                                                                                                                                                                                                                                                                                                                                                                                                                                                                                                                                                                 |
|-------------------|---------------------------------------------------------|----------------------------------------------------------------------------------------------------------------------------------------------------------------------------------------------------------------------------------------------------------------------------------------------------------------------------------------------------------------------------------------------------------------------------------------------------------------------------------------------------------------------------------------------------------------------------------------------------------------------------------------------------------------------------------------------------------------------------------------------|
| Rahmat Abdiansyah | Best Management Practice and OHS.                       | Indonesian citizen. Bachelor of Forestry from IPB University, with majors in Forest Resources Conservation and Ecotourism. Has experience working in the Indonesian Palm Oil Farmers Organization and Indonesian private oil palm plantation companies. Participate in ISPO and RSPO Internal Auditor training in 2018, ISPO and P&C Certification Systems IHT in 2019, IHT ISO 19011, ISPO Auditor Training in 2020, RSPO Lead Auditor Training in 2020, ISO 14001 and ISO 9001 Lead Auditor Training in 2020, and awareness of the RSPO Certification System and the RSPO P&C in 2019 and 2020.                                                                                                                                            |
| Afiffuddin        | ICS, SCC, Legal, BMP                                    | Indonesian citizen, Diploma III majoring Palm Oil Plantation, Bogor Agricultural University. Five years working experience since 2010 at Oil Palm Plantation Company in Indonesia as agronomy operational staff and followed several trainings namely: Basic Plantation Management Program, Lead Auditor ISPO in 2016, RSPO P&C Lead Auditor Course in 2018, RSPO Supply Chain Certification Lead Auditor Course in 2021, OHS General Expert, OHS System Management based on PP 50 2012 and Management System Certification (ISO 9001-2015/SNI 19011-9001:2015) ISO 17021, ISO 17065, SA 8000 training.                                                                                                                                      |
| Ririn Sipayung    | Environmental Aspects, Best Management Practice and OHS | Experience working as a Sustainability Assistant for 6 years in several private oil palm plantation companies in Indonesia. The training that has been attended includes RSPO PNC 2018 Lead Auditor Training by Checkmark Training, IRCA 9001: 2015 Lead Auditor Training, Refreshment New ISPO (PERMENTAN 38 Year 2020), Awareness (ISO 9001, ISO 14001, ISO 45001: 2018, ISO 19011 : 2018, ISO 17021: 2015, ISO 17065: 2012), In House Training (Best Management Practice, Environment, Labor, Social, and Transparency), Prospective Occupational Safety and Health Expert (AK3U) by the RI Ministry of Labor, ISPO Auditor Certification by LPP and the ISPO Commission, Traceability Supply Chain and Smallholder Engagement and so on. |

PT Mutuagung Lestari invites stakeholders to provide comments (if any) on any of the following matters related to the site for assessment:

- Environmental protection within the estate or mill including use of pesticide and waste management.
- Biodiversity within the estate and mill
- Contribution for local development and opportunities for employment
- Provision of housing, sanitation, facility and education support
- Other issues related with the assessment

Comments accepted within 30 days from the date of this letter will be considered in the certification assessment. Please include the following details in case we may need to contact for your clarification on any issued raised.

Name : \_\_\_\_\_  
Address : \_\_\_\_\_  
Telephone : \_\_\_\_\_  
Fax : \_\_\_\_\_

If you wish your comments to be treated confidentiality or remain anonymous, please mark your reply 'CONFIDENTIAL'. Please send your comments to:

**PT MUTUAGUNG LESTARI****Leonada****Operations Manager**

Jl. Raya Bogor Km. 33,5 No. 19  
Cimanggis, Depok – Indonesia 16953  
Telp. (+62-21) 8740202  
Fax. (+62-21) 87740745/46  
[agri@mutucertification.com](mailto:agri@mutucertification.com)  
web : [www.mutucertification.com](http://www.mutucertification.com)

**PT Kharisma Inti Usaha - Kharisma Inti Usaha POM****Sumedi****Head of Sustainability**

Gedung DBS Tower Lantai 15 Ciputra Word 1 Jl. Prof Dr.  
Satrio Kav3-5, Jakarta Selatan. Indonesia  
Telp. (+62-21) - 29887600  
Fax. (+62-21) - 29887602  
[sumedi@genting.com](mailto:sumedi@genting.com)  
web : [www.gentingplantations.com](http://www.gentingplantations.com)

Thank you for your comments and feedback.

Yours faithfully,

**Irham Budiman**

Director

PT Mutuagung Lestari