

Date: 08 September 2023

**Notification of RSPO Initial Certification of BHL POM PT Bumi Hutani Lestari subsidiary of PT Eagle High Plantations Tbk (RSPO Membership 1-0048-08-000-00, 21 March 2008)**

Dear Stakeholders,

PT Eagle High Plantations Tbk has applied to Mutuagung Lestari and will conduct Initial Certification at PT Bumi Hutani Lestari with scope BHL POM and its supply based, located at Mirah Kalanaman Village, Katingan Tengah Sub District, Katingan District, Kalimantan Tengah Province, Indonesia against the requirement of Indonesia National Interpretation of the RSPO Principles and Criteria for the Production of Sustainable Palm Oil 2018 (INANI 2020).

BHL POM – PT Bumi Hutani Lestari has successfully been registered in the PalmTrace IT platform with member RSPO\_PO1000004865. The organization is a member of RSPO and has been taking an active role in the RSPO certification processes and planned to maintain RSPO Sustainable Palm Oil requirement for all of its production. Mutuagung Lestari has arranged to conduct the assessment to the organization which operating 1 (one) palm oil mill and 6 (six) estates on **16 – 21 October 2023**.

Information on production data of Mill and estates to be assessed are as follows:

Name of Mill	Location	GPS Reference		Mill Capacity (Tonnes/hour)	Annual Volume	
		Latitude	Longitude		CPO Output (Tonnes/year)	PK Output (Tonnes/year)
BHL POM	Mirah Kalanaman Village, Katingan Tengah Sub District, Katingan District, Kalimantan Tengah, Indonesia	S 01° 40' 43.700"	E 112° 56' 15.400"	60	63,467.41	11,727.67

\*Sources: Data Production period of 12 months

Name of Estate	Location	GPS Reference		Total Area (Ha)	Production Area (Ha)	FFB Production (tonnes/year)
		Latitude	Longitude			
Sinabung Estate (SNBE)	Damar Makmur Village, Tualan Hulu Sub District, Kotawaringin Timur District, Kalimantan Tengah Province, Indonesia	S 01° 39' 42.990"	E 112° 53' 3.514"	2,143.90	1,951.20	33,623.25
Sibayak Estate (SBYE)	Mirah Kalanaman Village, Katingan Tengah Sub District, Katingan District, Kalimantan Tengah Province, Indonesia	S 01° 42' 4.414"	E 112° 57' 49.007"	2,031.70	1,908.90	46,469.64
Rinjani Estate (RJNE)	Damar Makmur Village, Tualan Hulu Sub District, Kotawaringin Timur District, Kalimantan Tengah Province, Indonesia	S 01° 42' 1.465"	E 112° 56' 19.569"	2,353.00	2,103.40	37,164.98

Kerinci Estate (KRCE)	Mirah Kalanaman Village, Katingan Tengah Sub District, Katingan District, Kalimantan Tengah Province, Indonesia	S 01° 39' 51.620"	E 112° 57' 39.631"	1,724.80	1,307.80	22,677.37
Bukit Raya Estate (BRYE)	Mirah Kalanaman Village, Katingan Tengah Sub District, Katingan District, Kalimantan Tengah Province, Indonesia	S 01° 37' 9.085"	E 112° 55' 24.316"	2,328.00	1,846.90	28,000.11
Papandayan Estate (PPDE)	Mirah Kalanaman Village, Katingan Tengah Sub District, Katingan District, Kalimantan Tengah Province, Indonesia	S 01° 35' 1.525"	E 112° 55' 14.066"	2,264.60	1,001.20	28,000.29
<b>Total</b>				<b>12,846.00</b>	<b>10,119.40</b>	<b>195,935.63</b>

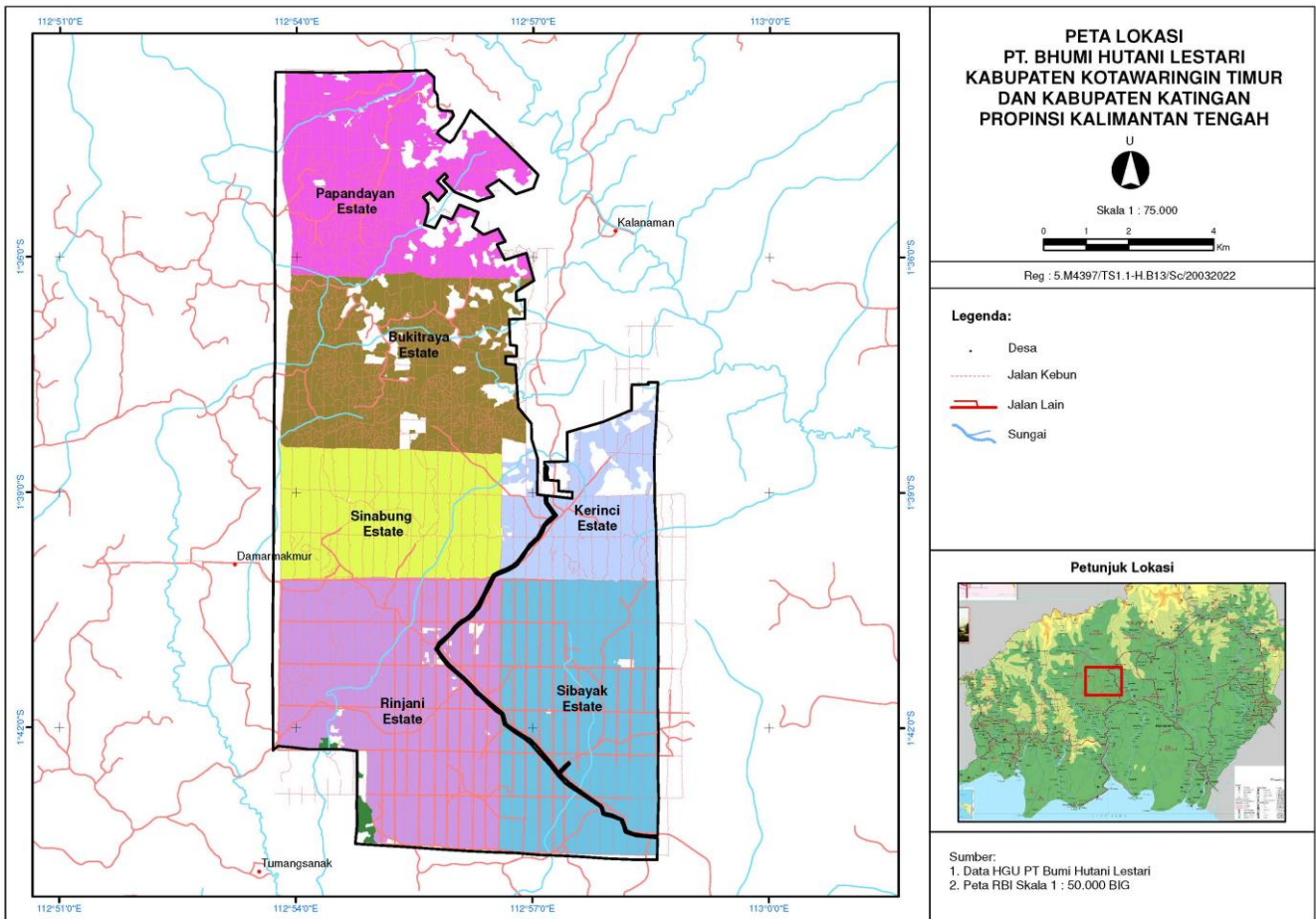
\*Sources: Data Production period of 12 months

PT Eagle High Plantations is an oil palm plantation company based in Indonesia with plantations and palm oil mills in Kalimantan, Sumatra and Papua. The company is committed to becoming a sustainable company by prioritizing a balance of economic, environmental, social and corporate governance performance.

The Company is an existing oil palm plantation and there are no plans for land development.

PT Bumi Hutani Lestari has completed the RaCP process, the Concept Note (Annex 7) has been approved by the RSPO on 27 May 2022, and the Remediation & Compensation plan (Annex 8) has been approved by the RSPO on 11 October 2022.

Location maps of the unit certifications are:



PT Mutuagung Lestari, is also known Mutu Certification International (MUTU), and has started as inspection, laboratory, and Certification body since 1990. As a private national company and supported with highly committed professionals, MUTU has gained recognition nationally and internationally. Since June 2003, MUTU has received recognition from the Ministry of Agriculture, Forestry, and Fishery of Japan (MAFF) as registered overseas certification body (ROCB). MUTU certify and mark products with Japan agriculture standard (JAS) covering Indonesia, Myanmar, Cambodia, Malaysia, Vietnam, Timor Leste, Philippines, Papua New Guinea and China. MUTU is the first ROCB in Asia. National Accreditation Committee has accredited MUTU as Quality Management System certification body (ISO 9001:2015) and Environmental Management System certification body (ISO 14001:2015). Indonesia Ecolabelling Institute (LEI) has also accredited MUTU as Sustainable Forest Management System certification body, Certification Body of Indonesian Sustainable Palm Oil (ISPO), Since March 2014, MUTU has been accredited by ASI (Accreditation Services International) as a RSPO certification body.

The auditor team for the certification assessment will be led of **Hasiholan Sihombing** and other team auditor from PT Mutuagung Lestari, consist of:

Audit Team	Role/ Area of Requirement	Qualification and Experience
Hasiholan Sihombing	Legal Aspects, Land Dispute, SCCS, Environment, GHG, and HCV Aspects	Indonesian citizen. Bachelor of Agriculture Majoring in Agronomy, Agriculture Faculty. He has working experience for 7 (seven) years since 2009 as an Operational Staff in an Oil Palm Plantation Company in Indonesia. The training he has followed namely: Lead Auditor ISPO in 2016, RSPO P&C Lead Auditor Course in 2018, RSPO Supply Chain Certification Lead Auditor Course in 2020, SA 8000 Awareness in 2018, Quality Management Systems (ISO 9001:2015) in 2016, Environmental Management Systems (ISO 14001:2015) in 2017, OHS General Expert in 2013, OHSAS 18001:2007 in 2017, ISO 19011:2018 in 2019, ISO 17021:2011 and ISO 17065:2012 in 2016.
Septian Maulana	Worker Welfare and Transparency Aspects	Indonesian Citizen, Bachelor of Economic, Pamulang University. Have experience as sustainability staff on oil palm plantation. Training have been followed including Occupational Health and Safety Expert Candidate certification by Ministry of Manpower and Transmigration of Indonesia; Basic Fire Fighting and Basic First Aid; Awareness Integrated Management Systems (ISO 14001, and ISO 45001 in 2020); Awareness (ISO 19011, ISO 17065; and ISO 17021) in 2020; ISO 9001:2015 Lead Auditor in 2021, ISPO Lead Auditor in 2021, RSPO Lead Auditor in 2021 and Completed Awareness Social Audit SMETA in 2022.
Firda Tarunajaya	BMP and OHS Aspect	Indonesian citizen, graduated in 2010 from the Department of Silviculture, Faculty of Forestry, Bogor Agricultural Institute. He has working experienced for 10 years since 2010 as an Operational Staff in an Oil Palm Plantation Company in Indonesia. The training he has followed namely: Lead Auditor RSPO, Lead Auditor ISPO, Quality Management Systems (ISO 9001:2015) by IRCA, Environmental Management Systems (ISO 14001:2015), ISO 19011:2018, ISO 17021:2011 and ISO 17065:2012. He has experienced in various audit activities related to the certification system of sustainable palm oil plantation since 2021.

PT Mutuagung Lestari invites stakeholders to provide comments (if any) on any of the following matters related to the site for assessment:

- a. Environmental protection within the estate or mill including use of pesticide and waste management.
- b. Biodiversity within the estate and mill
- c. Contribution for local development and opportunities for employment
- d. Provision of housing, sanitation, facility and education support

e. Other issues related with the assessment

Comments accepted within 30 days from the date of this letter will be considered in the certification assessment. Please include the following details in case we may need to contact for your clarification on any issued raised.

Name : \_\_\_\_\_  
Address : \_\_\_\_\_  
Telephone : \_\_\_\_\_  
Fax : \_\_\_\_\_

If you wish your comments to be treated confidentiality or remain anonymous, please mark your reply 'CONFIDENTIAL'. Please send your comments to:

**PT MUTUAGUNG LESTARI****Leonada****Operations Manager**

Jl. Raya Bogor Km. 33,5 No. 19  
Cimanggis, Depok – Indonesia 16953  
Telp. (+62-21) 8740202  
Fax. (+62-21) 87740745/46  
[agri@mutucertification.com](mailto:agri@mutucertification.com)  
web : [www.mutucertification.com](http://www.mutucertification.com)

**PT BUMI HUTANI LESTARI****Budi Tri Prasetya****Head Sustainability**

PT Eagle High Plantations Tbk  
Rajawali Place, 28<sup>th</sup> Floor  
Jl. HR Rasuna Said Kav. B/4, Jakarta, 12910  
Telp. (+62-21) 8665 8828  
Fax. -  
[sustainability@eaglehighplantations.com](mailto:sustainability@eaglehighplantations.com)  
web : [www.eaglehighplantations.com](http://www.eaglehighplantations.com)

Thank you for your comments and feedback.

Yours faithfully,

**Irham Budiman**

Director  
PT Mutuagung Lestari