

RSPO NOTIFICATION OF PROPOSED NEW PLANTING

This notification shall be on the RSPO website for 30 days as required by the RSPO procedures for new plantings (<http://www.rspo.org/?q=page/535>). It has also been posted on local on-site notice boards.

Date of notification: 27 April 2020

NAME OF GROWER	:	PT SAWIT MITRA ABADI
SUBSIDIARY (If any)	:	GENTING PLANTATIONS
RSPO Membership Number	:	1-0086-06-000-00 dated 14 November 2006
Location of proposed new planting	:	
• Plantation address	:	Sub District of Nanga Tayap, District of Ketapang, Province of Kalimantan Barat, Indonesia
• Business Permit	:	No. 377/DPMPSTP-D.B/2019 dated 8 July 2019 Issued by Head of Ketapang District.
• Type of Business	:	Oil Palm Plantations.
• Size (ha)	:	1,000 Ha
• Contact persons	:	Dr. Faizal Amri Amran
• Email address	:	faizal.amri@genting.com
• Geographical location	:	North : Sub Village of Pangkalan Jihing, Village of Pangkalan Teluk East : PT. Sawit Mitra Abadi (existing) South : Sub Village of Cali, Village of Pangkalan Teluk & PT. Sawit Mitra Abadi (existing) West : PT. Sawit Mitra Abadi (existing)
• Spatial Reference (GPS Coordinates)	:	1° 15" 46.53" S - 1° 17' 38.25" S 110° 22' 10.25" E – 110° 25' 34.51" E
• Boundary map	:	See Figure 2
• Areas and time plan for new plantings	:	See Table 1 and Figure 3

Figure 1. Location map of PT. Sawit Mitra Abadi

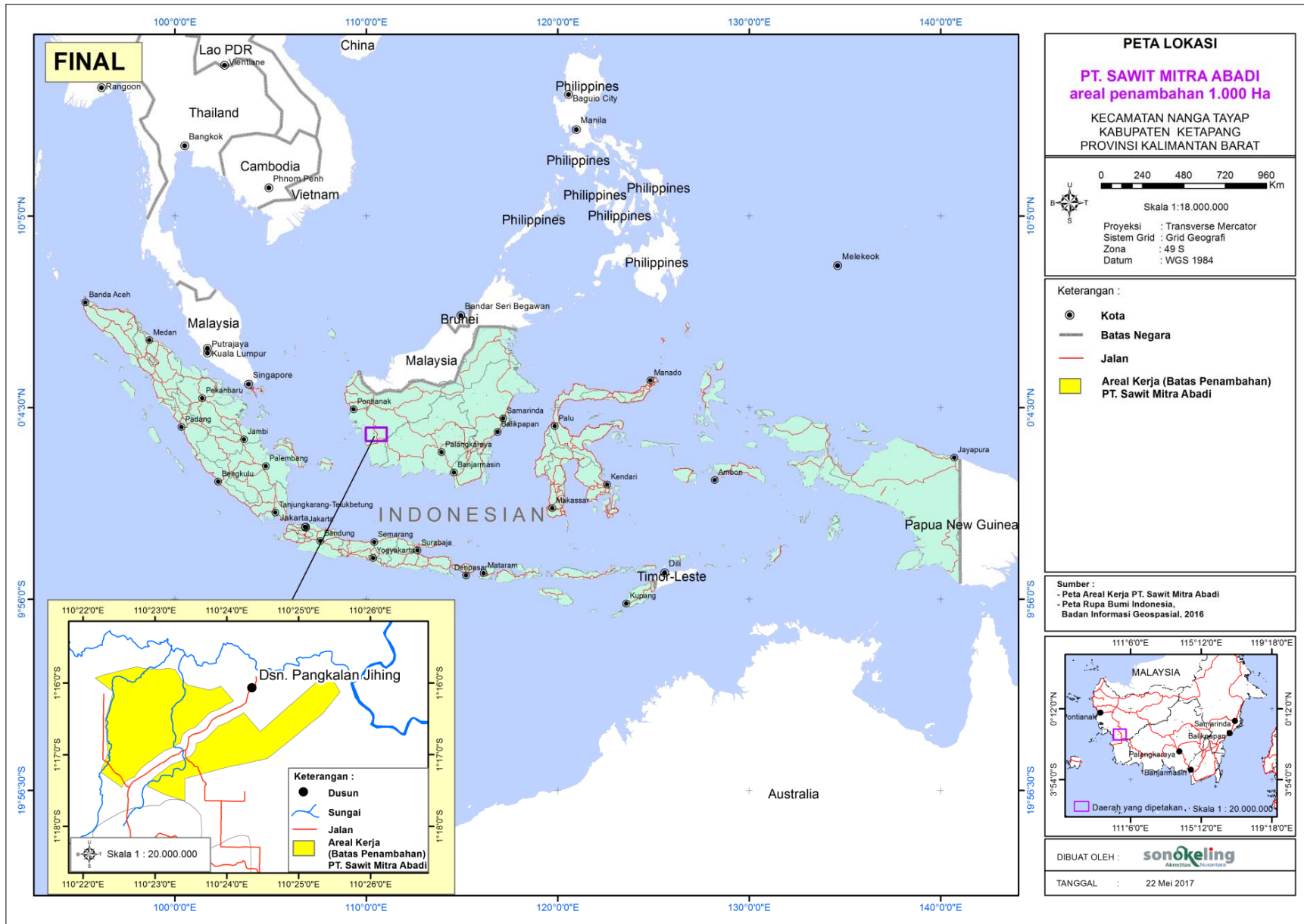


Figure 2. Concession map of PT. Sawit Mitra Abadi

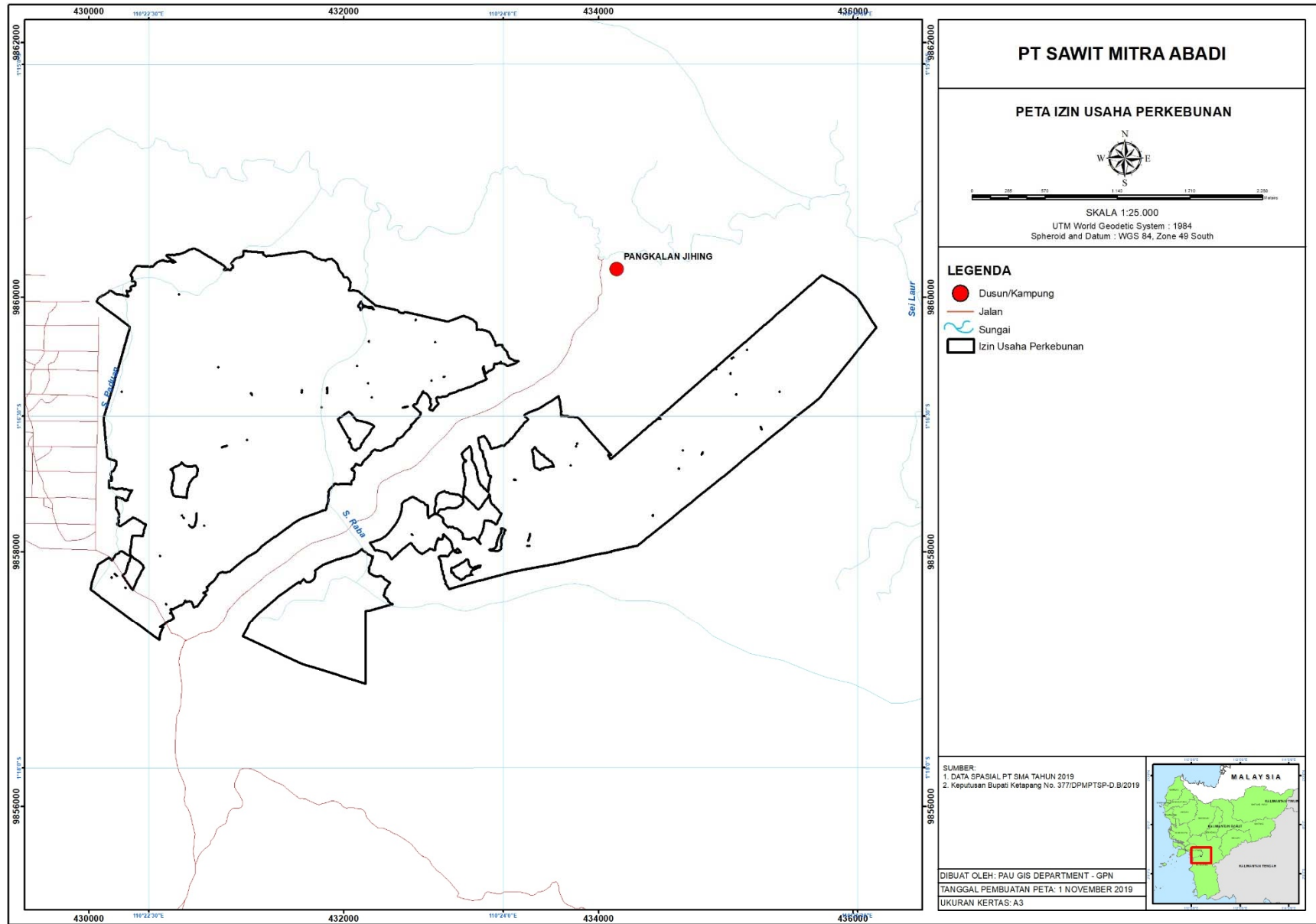
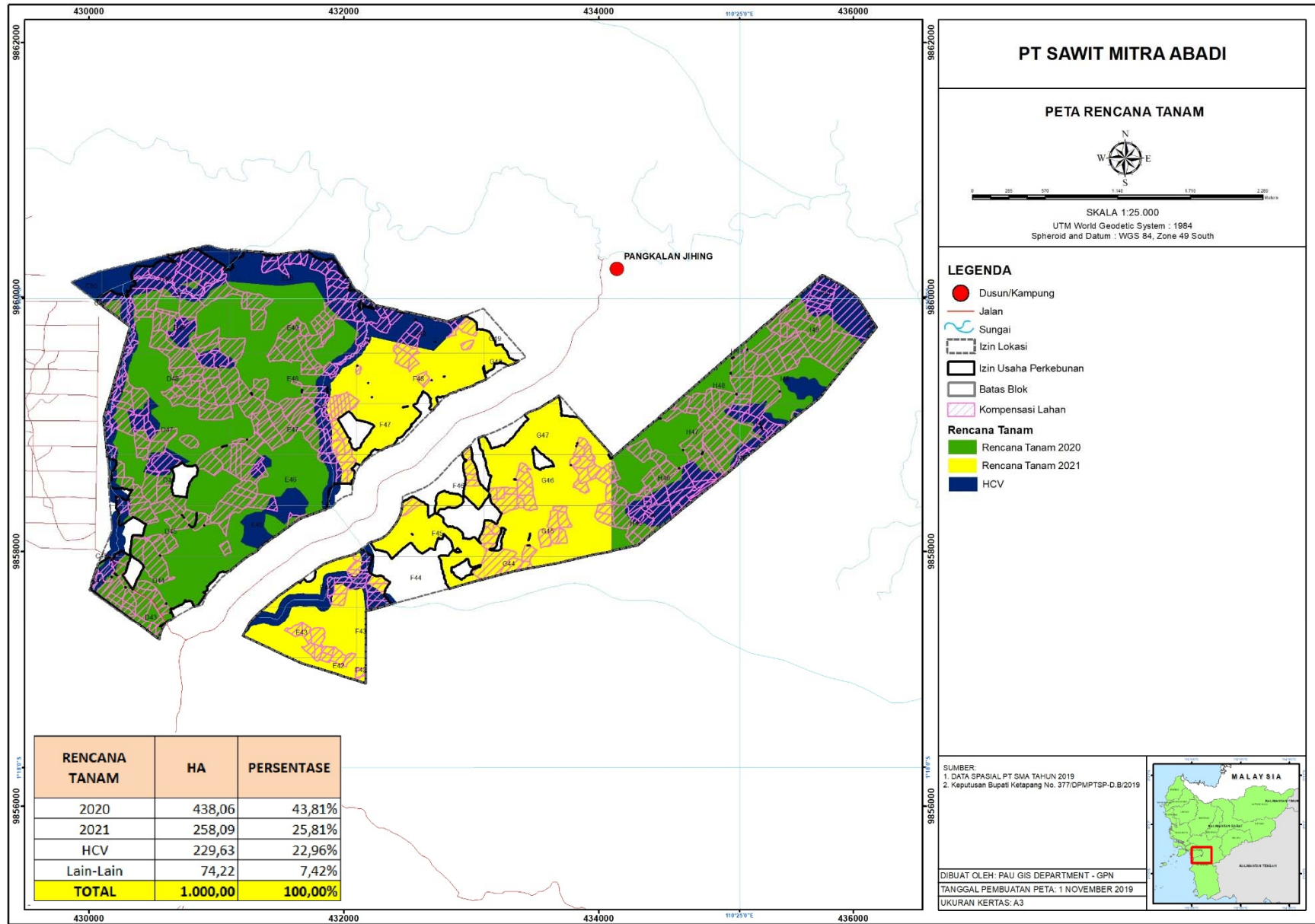


Table 1. The summarized of area and time-plan for new plantings

Description	Width of Area (ha)
A. Conservation/Unplantable	303.85
HCV	229.63
Others	74.22
B. Plan for Planting (ha)	696.15
Year of Planting 2020	438.06
Year of Planting 2021	258.09
Total A + B	1,000

There are an area outside of IUP which are the others area for 74.22 Ha and HCV area for 25.78 Ha (total 100 Ha), which include on the area of location permit with total of location permit are 1,000 Ha.

Figure 3. Planning Map of New Planting Area



STATEMENT OF ACCEPTANCE OF RESPONSIBILITY FOR NPP

Notes: The oil palm grower signs to confirm that the necessary assessments have been done and completed in accordance to the NPP.

Name of Grower : PT. Sawit Mitra Abadi
Name of Person Responsible : Dr. Faizal Amri Amran
Position : Head of Sustainability
Signed :

A handwritten signature in blue ink that reads "Faizal Amri Amran". The signature is written in a cursive style and is positioned to the right of the "Signed" label.

Date : 21 November 2019

VERIFICATION STATEMENT BY CERTIFICATION BODY:

PT. Sawit Mitra Abadi (here in after mentioned as PT. SMA) has a legal right to use the land which are location permit, Business Permit (IUP) and land compensation. Mutuagung Lestari auditors have conducted desk study verification at Jakarta Head Office on 6th - 7th November 2019 and field observation conducted at site from 19th October – 22nd November 2019 (include a traveling to the site). The auditors are: Leonada (Legal, FPIC, Soil & topography aspect) and Bayu Yogatama (HCV, SEIA, Land Use Change and Carbon Assessment aspect). The auditors use RSPO NPP guidance document for FPIC for auditors (RSPO-GUI-T01-022 V1.0 ENG).

Additional area 1,000 Ha of PT SMA is administratively located in Sub-Districts of Nanga Tayap, district of Ketapang, Province of Kalimantan Barat. It borders with the existing of PT. SMA and village of Pangkalan Teluk. The additional area 1,000 Ha of PT SMA area is a former of residents for agriculture, plantations and farming of communities. Based on LUCA document that conducted by Kusuma Wijaya S.Hut, M.Si (Lead Assessor) on 2019, there is known that the land cover crop consist of disturbed forest, shrubs, rubber plantation, dry cultivation land and bareland.

PT. SMA has Plantation Business Permit with total area of 8,865 Ha with existing of PT. SMA for 7,965 Ha and new development plan for NPP 900 Ha with details of land use planning consist of planting areas of 696.15 Ha and HCV area of 203.85 Ha. The new planting will be planned on 2020 – 2021. The assessment of HCV conduct on 2017 by an independent consultant Sonokeling Akreditasi Nusantara with Lead Assessor is Ir. Kresno Dwi Santosa, M.Si which has ALS Licensed Assessor and review by Dr. Kunkun Jaka Gurmaya which also has ALS Licensed Assessor. The HCV area identified in location permit of PT SMA is 229.63 Ha and management area of HCV is 310,35 Ha with the HCV area in Plantation Business Permit is 203.85 Ha. The HCV report was submit to HCVRN on 31st January 2018 and declared satisfactory on 11th September 2019. The HCV assesment has clearly recommended which areas need to be managed to maintain and enhance the full range of HCV's 1 – 6.

The company has conducted environmental impact assessment in the Addendum ANDAL report on June 2018 for an area of 8,953 ha. The AMDAL was created by a team that led by Farah Diba S.Hut, M.Si who had participated in the training of AMDAL compilers by the Ministry of Environment. The competency training had complied with regulations in Indonesia to prepare an environmental impact assessment. Environmental impact assessment was carried out by consultation with the surrounding communities and related agencies in 2017.

In addition, the company has conducted Social Impact Assessment on 2019 by PT Sonokeling Akreditas Nusantara with the team leader Ir. Kresno Dwi Santosa, M.Si who has experience in creating the HCV and SIA documents since 2011. All the preparation of SIA documents was carried out in consultation with the surrounding community.

PT SMA has arranged the management plan of SEIA to reduce the negative impact and increase positive impact from all risk and impact that are identified. PT SMA has adhered to RSPO New Planting Procedure and the documented assessments and plans are comprehensive and professionally carried out according to RSPO requirements and comply with the applicable RSPO Principles, Criteria and indicators for new plantings.

The FPIC process of land compensation is done by compensation documents verification and interviewing the surrounding communities. Interviews were conducted to village adjacent to company locations which is Pangkalan Teluk Village (Sub village of Pangkalan Jihing, Cali and Teluk Parak). Interview process was conducted for two days by two auditors from 20th – 21st November 2019.

From interviews it is known that the company informed by the communities of their self selected designated representatives where land acquisition is planned. The communities also have meaningfully participated through interviews or Forum Group Discussions since the preparation of SEIA (Addendum ANDAL 2018), SIA (2019), HCV Assessment (2017) and reviewing HCV Assessment by ALS Licensed Assessor at 2017 and then the HCV report was submitted to HCVRN on 31st January 2018 and declared satisfactory on 11th September 2019. The surrounding community supports the existence of oil palm plantations and hopes that the opening of oil palm plantations can be done as soon as possible. The communities also said that the company never commit coercion in the process of land acquisition and has involved participatory identification to local people land in company location permit.

In addition to interviewing the surrounding community and field observations are made to ensure that the whole area has not been conducted land clearing and HCV sites are in good condition. The field observation and interview with the communities process was conducted for 2 days by an auditors. From field observations it is known that the condition of HCV is still well preserved, besides the location of NPP is still not yet embedded.

PT SMA also has complied to Criterion 7.10 (Carbon Stocks) of the P&C RSPO 2018. The calculation of Carbon Stock Analysis and Green House Gas was conducted on 2019 by Kusuma Wijaya S.Hut, M.Si (Lead Assessor) which is Registered HCS Approach Practitioners with assessment method by preparation of land cover maps from satellite imagery and estimating carbon stocks in new development areas that in accordance with RSPO GHG Assessment Procedure for New Development, Version 3 issued on 30th October 2016.

Signed for, on behalf of,
Mutuagung Lestari



Leonada
Lead Auditor
27 April 2020

Management of PT SMA



Dr. Faizal Amri Amran
Head of Sustainability
27 April 2020