

Internal Hotspot Monitoring Weekly Report for 2023

Week 4 - January 2023

23 – 29 January 2023
Malaysia & Indonesia



Overview



1. P&C 2018 & RSPO ISH Standard 2019 – Related Criteria
2. Weekly Analysis
 - i. Comparison to 2021/2022: All Hotspots in MY & ID
 - ii. Comparison to 2021/2022: Hotspots within RSPO Member Concession
 - iii. Weekly trend from the last 10 weeks
3. Weekly Hotspot Map
 - i. Hotspot Distribution Map
 - ii. Hotspot Distribution by Peatlands and Landuse Map
 - iii. Hotspot Persistency Map
4. Hotspots for Week 4 - January 2023
 - i. RSPO vs. non-RSPO member comparison
 - ii. Hotspots Distribution by States/Region
 - iii. Hotspots in RSPO members (State/Province)
5. ASEAN Weather Outlook

RSPO Principles & Criteria 2018

Related Criteria

There is **no use of fire for pest control** unless in exceptional circumstances

7.1.3

Criteria 7.1

The unit of certification **does not use open fire for waste disposal.**

7.3.3

Criteria 7.3

The unit of certification **establishes fire prevention and control measures** for the areas directly managed by the unit of certification

7.11.2

Criteria 7.11

RSPO ISH Standard 2019

Related Criteria

Smallholders complete training on best management practices (BMPs) for peat. The group has an **action plan to minimise risk of fire**, to apply BMPs for planting on peat and manage water systems in the certification unit.

4.4 MSA

Criteria 4.4

Smallholders **implement** the group's **action plan based on BMPs**, including **fire** and water management, and monitoring of subsidence rate for existing planting on peat.

4.4 MSA

Criteria 4.4

Fire is not used on the oil palm plot **for preparing land** or for **pest control**, nor open fire for **waste management** on the farm.

4.6 E,
4.6 MSA,
4.6 MSB

Criteria 4.6



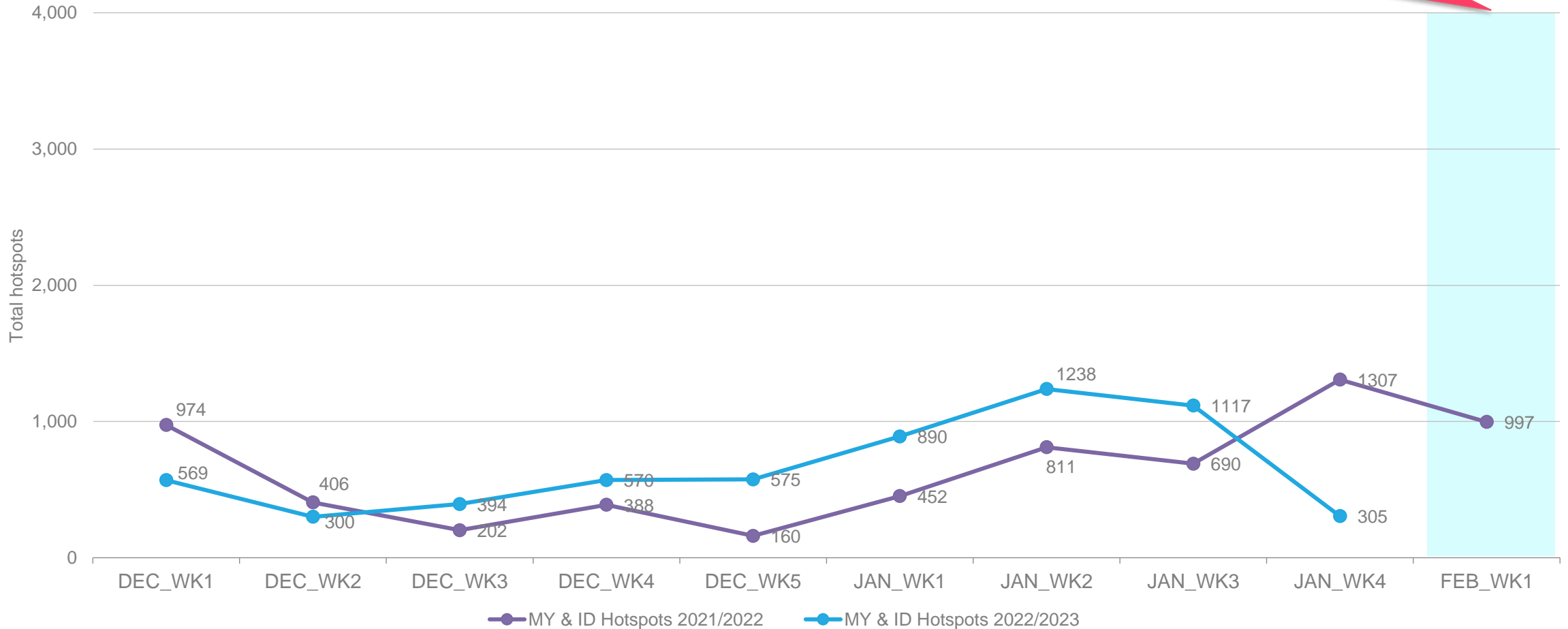
Weekly Analysis

Comparison to 2021/2022 trend
Comparison to previous 10 weeks

Comparison to 2021/2022: All hotspots



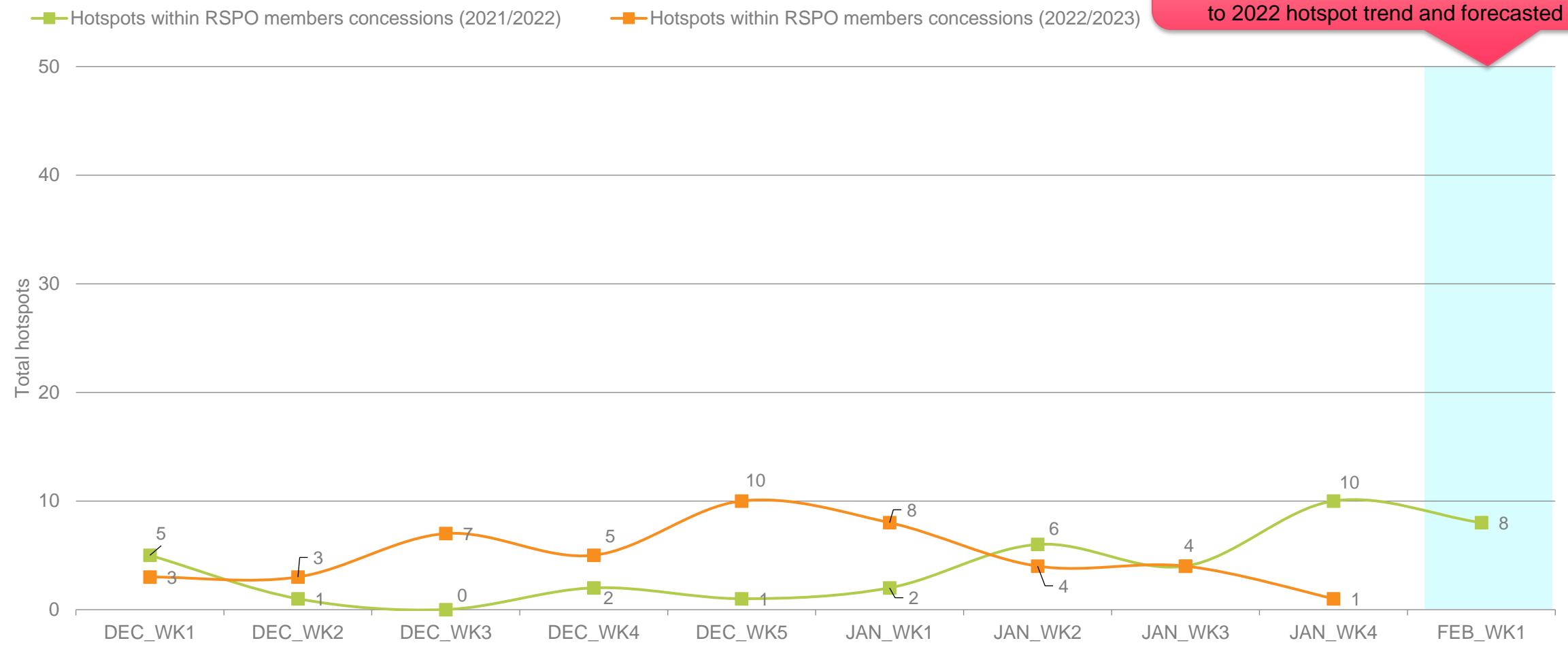
The number of hotspots for next week (February 2023: week 1) is predicted to be **decrease** in the region as compared to 2022 hotspot trend and forecasted



Comparison to 2021/2022: Hotspot within RSPO Members Concessions



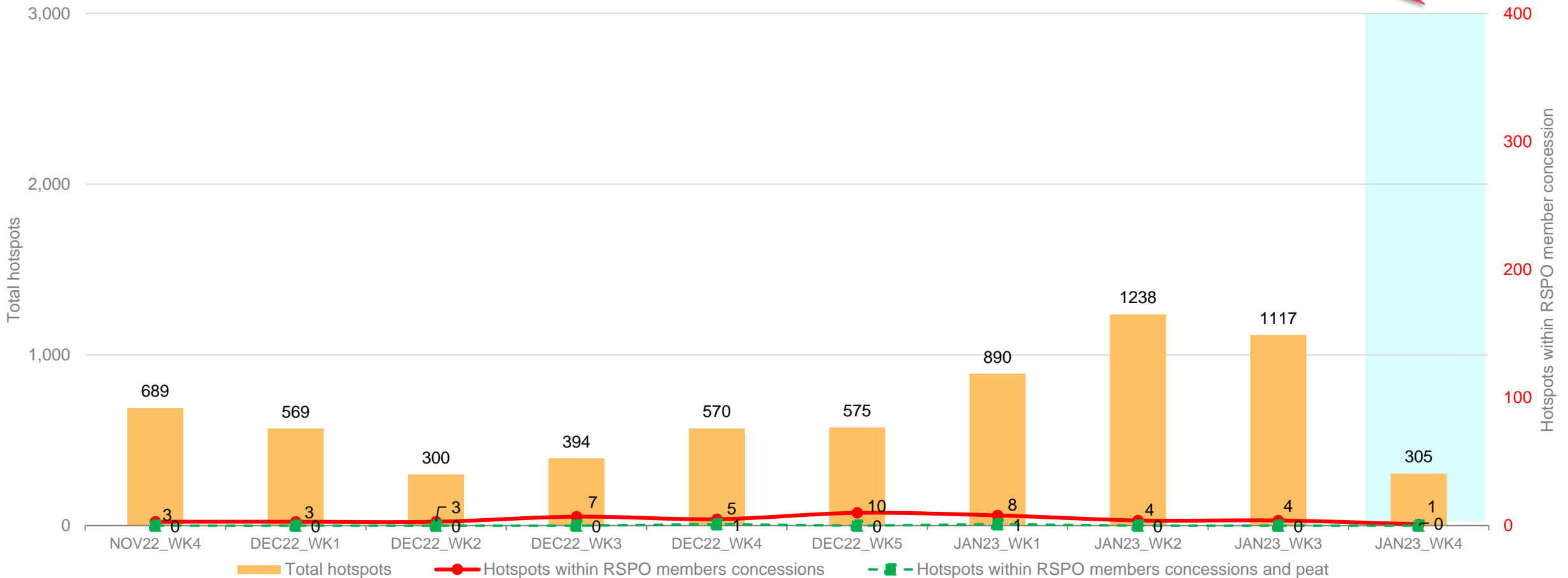
The number of hotspots within RSPO member is expected to be **lower** for next week (February 2023: week 1) as compared to 2022 hotspot trend and forecasted



Weekly trend from last 10 weeks



Lower in hotspot count than previous week



23 January 2023 – 29 January 2023



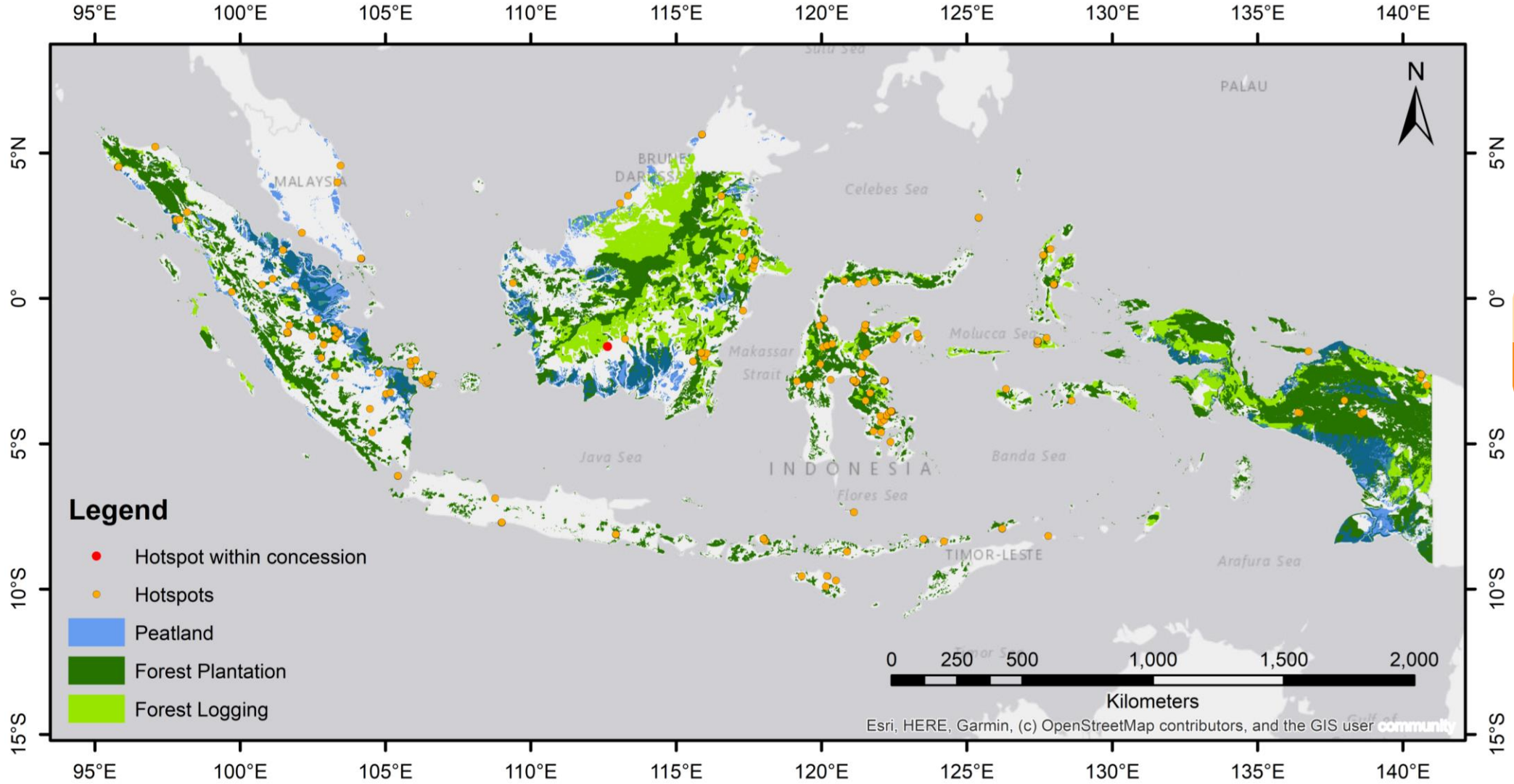
Weekly Hotspot Map

Malaysia & Indonesia

23 January 2023 – 29 January 2023



Hotspot Distribution by Peatland & Landuse Map



Legend

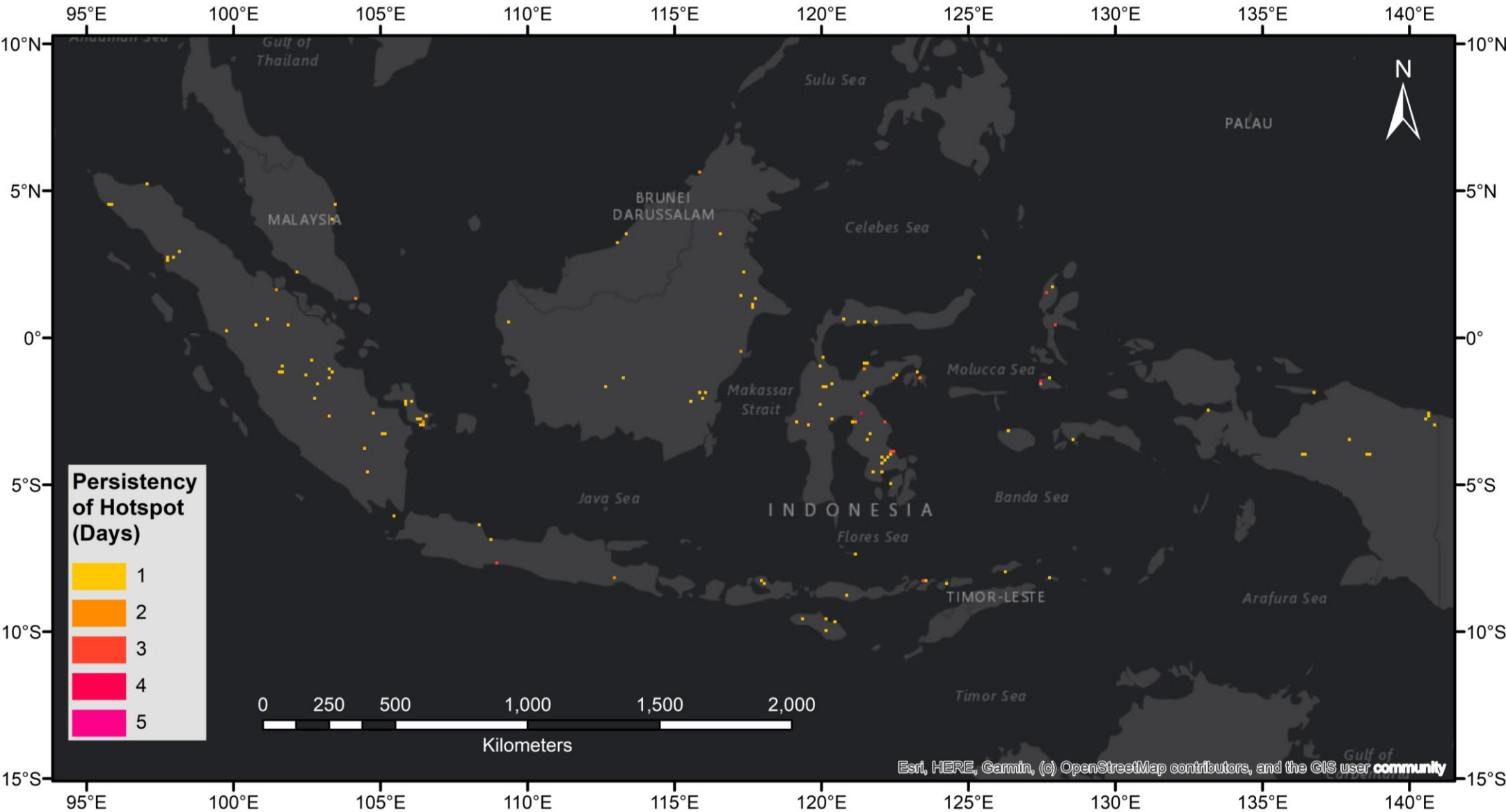
- Hotspot within concession
- Hotspots
- Peatland
- Forest Plantation
- Forest Logging

| DATA | SOURCE |
|-------------------|---|
| Hotspots | NASA FIRMS (https://firms.modaps.eosdis.nasa.gov/active_fire) |
| Peatland | World Resources Institute. "Peat lands". Accessed through Global Forest Watch on 17/11/2022. www.globalforestwatch.org |
| Forest Plantation | "Wood fibre concessions." Accessed through Global Forest Watch on 17/11/2022. www.globalforestwatch.org |
| Forest Logging | "Managed forest concessions." Accessed through Global Forest Watch on 17/11/2022. www.globalforestwatch.org |

23 January 2023 – 29 January 2023



Hotspot Persistency Map



Each grid represents the number of days hotspots were detected within the 10km X 10km grid between 23 January 2023 – 29 January 2023

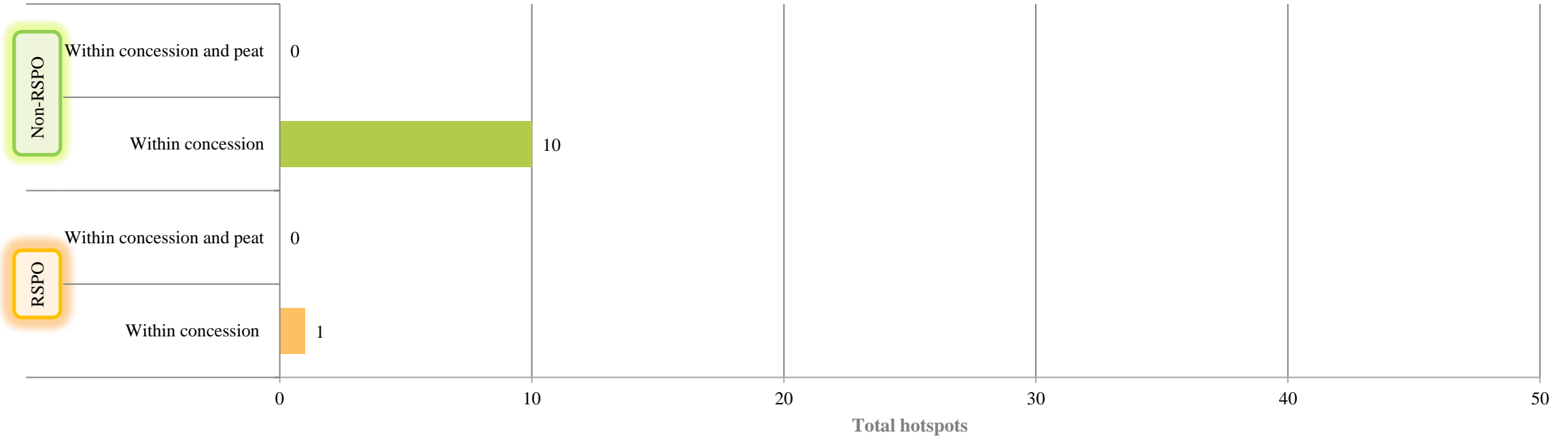
23 January 2023 – 29 January 2023



Week 4 - January 2023 Hotspot

Malaysia & Indonesia

RSPO vs non-RSPO comparison



Non-RSPO oil palm concession location data was derived from oil palm concessions dataset accessed through Global Forest Watch on 17/11/2022. www.globalforestwatch.org. The website states that this layer is a compilation of concession data from various countries and sources. The quality of these data can vary depending on the source. This layer may not include all existing concessions in a country, and the location of certain concessions can be inaccurate.

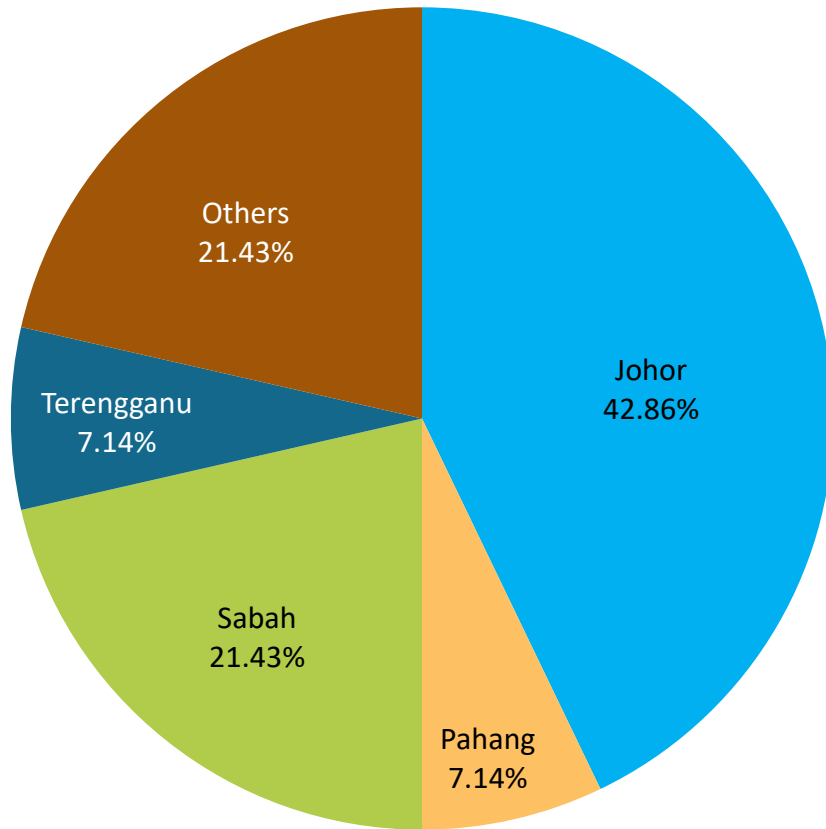
As such the data probably overstates the extent of oil palm plantations in some cases, as there are many licenses granted and the oil palm plantation has not been developed. In other cases, it may understate the extent of plantations as it does not take into account smallholders. Nevertheless, this appears to be the best data available of ALL oil palm in Indonesia.

The RSPO concession boundary data was overlaid with this data in the GIS and RSPO concessions were “clipped” out of this data, leaving only “non-RSPO” concessions.

Non-RSPO*: ~19,000,000 ha

RSPO: ~ 4,800,000 ha

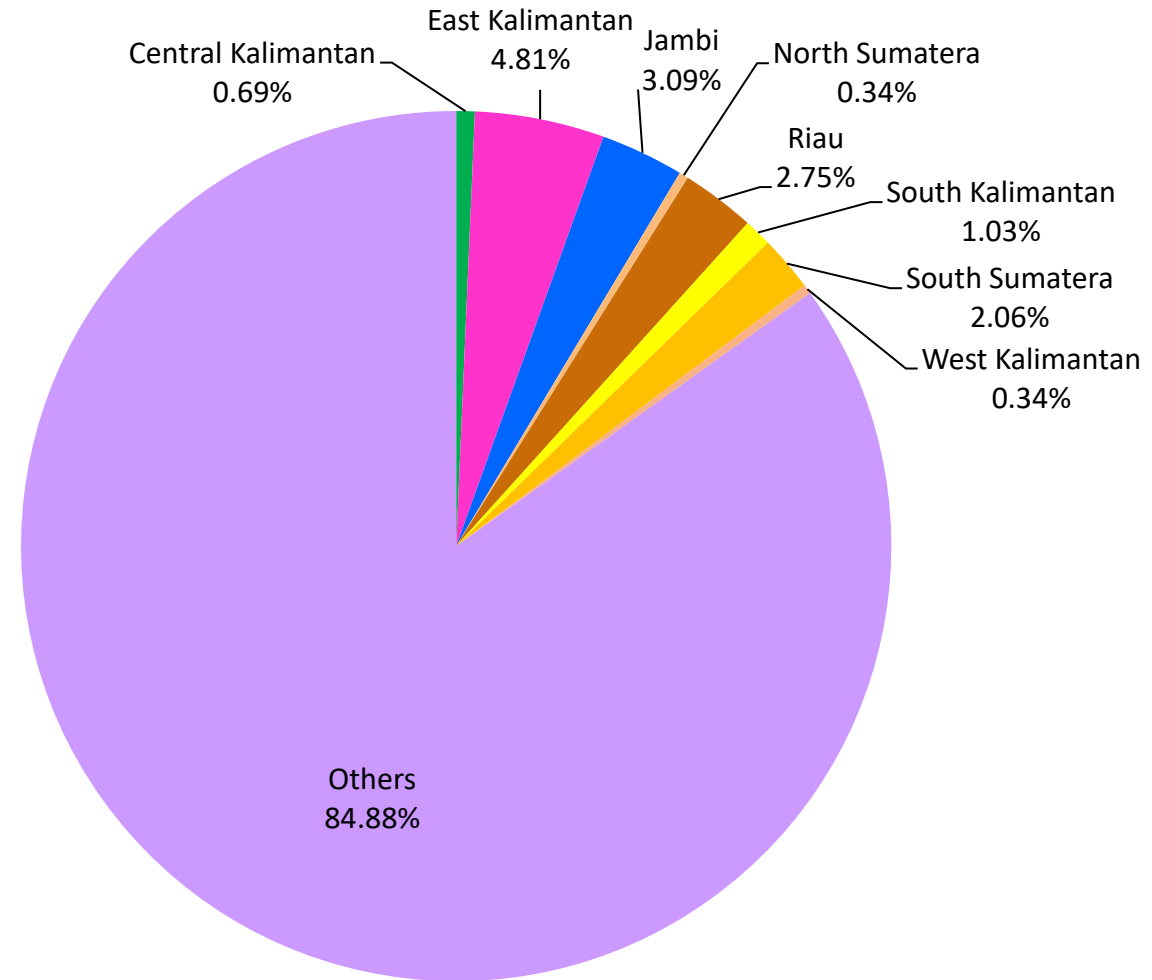
Distribution of Hotspots by State in Malaysia



| STATE | TOTAL |
|--------------|-----------|
| Johor | 6 |
| Kedah | 0 |
| N. Sembilan | 0 |
| Pahang | 1 |
| Perak | 0 |
| Sabah | 3 |
| Terengganu | 1 |
| Others | 3 |
| Total | 14 |

Distribution of Hotspots by Region in Indonesia

| REGION | TOTAL |
|--------------------|------------|
| Central Kalimantan | 2 |
| East Kalimantan | 14 |
| Jambi | 9 |
| North Sumatera | 1 |
| Riau | 8 |
| South Kalimantan | 3 |
| South Sumatera | 6 |
| West Kalimantan | 1 |
| Others | 247 |
| Total | 291 |



Hotspots in RSPO members (State/Province)



| No. of Member/s | Date of Acquisition | District / Regency | Province / State | Country | No. of Hotspots | Total no. of Hotspots |
|-----------------|---------------------|--------------------|--------------------|-----------------------|-----------------|-----------------------|
| 1 | 24-Jan-23 | East Kotawaringin | Central Kalimantan | Indonesia | 1 | 1 |
| 1 | | | | Total Hotspots | | 1 |

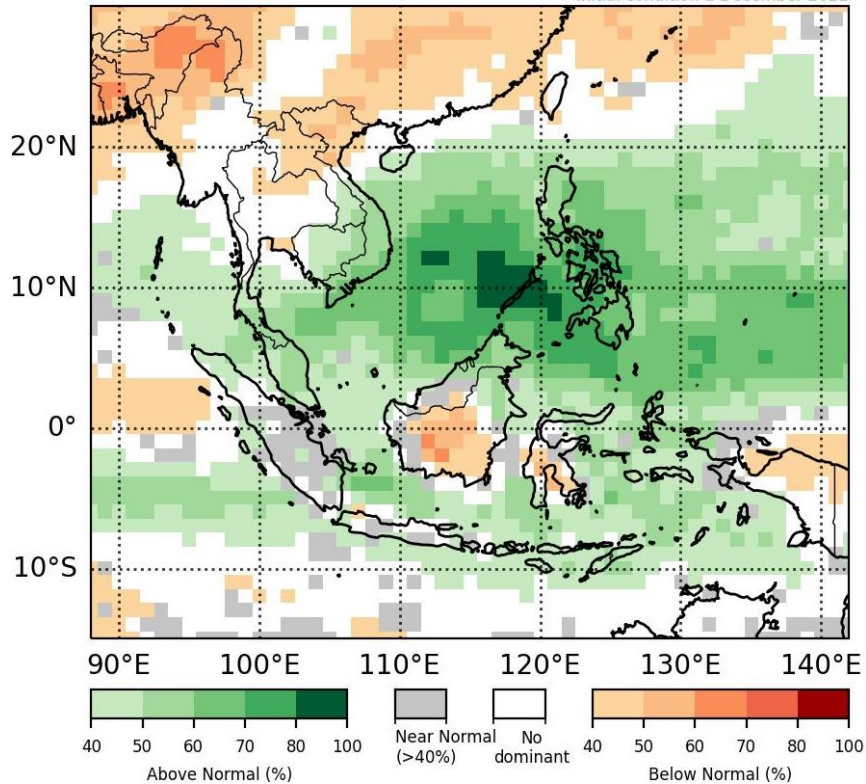


ASEAN Weather Outlook

Source: The ASEAN Specialised Meteorological Centre

Regional Weather & Haze Outlook

January 2023 Rainfall Tercile Summary, ECMWF/Met Office/NCEP
Initial condition 1 December 2022



Rainfall tercile summary predictions of multi-model ensemble model for January 2023 (contains modified Copernicus C3S information)

Alert Level

- LEVEL 0** Stay vigilant.
- LEVEL 1** Dry season for the Northern ASEAN region.
- LEVEL 2** Exceeding 150 hotspots in 2 consecutive days in Northern ASEAN with dense smoke plumes; dry weather persisting; and prevailing winds blowing from the Mekong sub-region. Increasing risk of transboundary haze in the region.
- LEVEL 3** Significant and persistent hotspot activities with widespread moderate to dense smoke haze observed over 2 or more consecutive days; dry weather persisting; and prevailing winds blowing towards ASEAN countries.

In recent days, prevailing dry weather conditions over the Mekong sub-region have resulted in an increase in hotspot activities.

Dry weather conditions are forecast to continue over the Mekong sub-region in the coming weeks, with prevailing winds likely to blow from the northeast or east. Under these conditions, the hotspot and smoke haze situation could worsen with an increased risk of transboundary smoke haze development.

The Mekong sub-region remained dry today with cloudy conditions along the eastern coast, while other parts of the ASEAN region experienced continued shower activities. Several stations reported moderate to unhealthy air quality in the central parts of the Mekong sub-region.

Dry weather is forecast for much of the Mekong sub-region in the coming days. With dry conditions continuing, the elevated hotspot activity and smoke haze development in the sub-region are likely to persist in the fire-prone areas and may increase the risk of transboundary haze occurrences. Over the southern ASEAN region, shower activities are expected to help subdue the overall hotspot activity.

Alert by RSPO:

For the following week, RSPO Secretariat would like to recommend the following measures to Members:



Dry Season Area

(Northern ASEAN region; especially at Mekong sub-region)

- Please alert to the Fire Danger Rating System (FDRS) indicator board especially in the fire prone area
- Supply appropriate well-maintained fire mitigation tools (fire extinguisher, fire truck)
- Establish of fire break (wide road, vacant land) within the planted area
- Inform workers and communities about the fire drill procedure
- Minimize outdoor activities and stay hydrated if the haze season occurred
- If haze occurred, wear respirator mask if outdoor activities is necessary.



Integrated Fire Management
Training conducted by PT Austindo
PT Austindo Nusantara Jaya Agri

Wet Weather Area

(as forecast for Southern ASEAN region)

- High risk of surface runoff in the estate area which may result in erosion and landslide
- Stay vigilant of water level and keep informed on local news of the flood in high-risk area
- Tendency for the formation of road potholes, which may necessitate additional maintenance and repair costs.
- Stay inside during thunderstorms and blizzards. Stay off the landline phone and computer during a storm.
- Wear appropriate rain gear for employees working in the rain

Background image:
Fire fighting in action conducted by Daabon Group



Find out more at
www.rspo.org