



RSPO PRINCIPLES AND CRITERIA ASSESSMENT REPORT

UPOIC (Nueakhlong-Khaophanom)

RSPO Membership No.: 1-0120-12-000-00

Certification Unit: Group certification
98, Moo 6, Nueakhlong-Khaophanom Road, Hui-Yoong Sub-
District, Nueakhlong District, Krabi 81130 Thailand

Bureau Veritas Certification (Hong Kong) Co. Ltd.



RSPO PRINCIPLES AND CRITERIA ASSESSMENT REPORT

PUBLIC SUMMARY REPORT

BV Contract No	2459631	Date contract	30 July 2016
Name of company	UPOIC Nueakhlong-Khaophanom		
Address company	98, Moo 6, Nueakhlong-Khaophanom Road, Hui-Yoong Sub-District, Nueakhlong District, Krabi 81130		
Country	Thailand		
Website	-		
RSPO Membership No	1-0120-12-000-00	Date registration	15 March 2012
Contact person	Mr. Surasit Pisetsit	Contact details	+66 (0) 81-9789814
Certification Unit	Plantation owned by group member of UPOIC Nueakhlong-Khaophanom		
BV Lead Auditor	Dr. Chaiyaporn Seekao		
BV Audit team members	Mr. Prapas Noras Associate Professor Dr. Opart Pimpa		
Pre-audit (if relevant)	NA	Date of pre-audit	NA
Main Evaluation	-	Date of Assessment	2-5 May 2012 (Main audit was performed by BSI)
Surveillance 1 (Date Proposed)	-	Date of Surveillance 1	10 October 2013 (ASA1 was performed by BSI)
Surveillance 2 (Date Proposed)	-	Date of Surveillance 2	24-26 September 2014 (ASA2 was performed by TUV NORD Integra bvba)
Surveillance 3 (Date Proposed)	-	Date of Surveillance 3	5-7 October 2015 (ASA2 was performed by TUV NORD Integra bvba)
Surveillance 4 (Date Proposed)	25-27 October 2016	Date of Surveillance 4	25-27 October 2016
BV Technical Reviewer	Valence Shem	Date of Review	24 January 2017
BV Certification Decision	Hubert de Bonafos	Date Decision	10 February 2017



Table of contents

	Page
List of Abbreviations.....	4
1.0 Description of the organization	
1.1 Type (mill, estate, etc.).....	5
1.2 Location (map and GPS), mill and/or hectarage statement.....	5
1.3 Description of supply base (fruit sources).....	6
1.4 Date of plantings and cycle.....	7
1.5 Other certification held (ISO, etc.).....	9
1.6 Organisational information/contact person.....	9
1.7 Tonnage certified.....	9
1.8 Time bound plan / Progress against time bound plan	10
1.9 Compliance with partial certification requirements	11
1.10 Progress of associated smallholders or outgrowers towards compliance with relevant standards	12
2.0 Assessment Process	
2.1 Assessment methodology and programme	12
2.2 Date of next surveillance visit.....	12
2.3 Lead assessor / assessment team.....	12
2.4 Certification body.....	16
2.5 Stakeholder consultation process	16
3.0 Assessment Findings	
3.1 Summary of Findings.....	17
3.2 Identified Non-conformances and noteworthy positive components (and status of non-conformities previously identified – <i>SA & RA only</i>)	42
3.3 Issues raised by stakeholders.....	42
4.0 Certified organisation's acknowledgement of internal responsibility	
4.1 Assessment conclusion and recommendation.....	43
4.2 Formal sign-off of assessment findings.....	43

List of Appendices

	Page
Appendix 1 : List of group members.....	44
Appendix 2 : Location map (s) of certification unit.....	65
Appendix 3 : Assessment Programme.....	67
Appendix 4 : Details of Non-conformities and Corrective Actions Taken.....	69
Appendix 5 : Verification on NCRs raised in the Previous Assessment	75



List of Abbreviation

FFB	Fresh fruit bunches
CU	Certification Unit
POM	Palm Oil Mill
mt	Metric tonne
CPO	Crude Palm Oil
PK	Palm Kernel
POME	Palm Oil Mill Effluent
EFB	Empty Fruit Branches
PCL	Public Company Limited



1.0 Scope of the Certification Assessment

1.1 Type (mill, estate and mill etc.)

Plantations owned by group member of UPOIC Nuekhlong-Khaophanom were assessed against RSPO Certification Systems, RSPO Standard for Group Certification (amendment April 2013) and RSPO P&C for Independent Smallholder under Group Certification (TH-NI 2012). Even though the new standard of RSPO Management System Requirements and Guidance for Group Certification of FFB production endorsed by the Board of Governors was released since 7th March 2016 and CB encouraged to use new standard for the assessment, the group prefer to use the old standard as above mentioned for the audit under the 12 (twelve) months grace period.

The group has been a member of the RSPO since 15 March 2012 with membership no. 1-0120-12-000-00. Group administration office is supported by the partnering mill namely United Palm Oil Public Company Limited (UPOIC) because majority of group members are the FFB supplier for the partnering mill.

The certification unit consisted of plots owned by formal members of the group. Administration office where is located at the partnering mill is also visited during the surveillance audit. The certification scope for the group certification is production of RSPO certified FFB. Even though the latest announcement from RSPO executive on December 2014 indicating that two trading systems of GreenPalm (certificates) and eTrace (physical) are now linked and these options are available for group to take advantage from RSPO certification, the group has decided to take opportunity of RSPO certification for selling RSPO credit in GreenPalm (GreenPalm will be replaced by RSPO PalmTrace at the beginning of year 2017). Other certified products (CPO, PK, PKO and PKE) will be therefore converted from total certified quantity of FFB for the group using guideline from RSPO.

1.2 Location (map and GPS), mill and/or hectarage statement

Table 1 shows the location of the group administration office where is supported by the partnering mill. List of the group members and their location are listed in the **Appendix 1**. While figure showed the location of the group members and their plantations is in the **Appendix 2**.

Table 1: Location and addresses of the group

Name of the group	GPS Location		Location Address
	Latitude	Longitude	
UPOIC Nuekhlong-Khaophanom	8°09'13.44"N	99°01'20.06"E	98, Moo 6, Nueakhlong-Khaophanom Road, Hui-Yoong Sub-District, Nueakhlong District, Krabi 81130 Thailand

1.3 Description of supply base (fruit sources)

The Fresh Fruit Bunches (FFB) are produced on plots owned and managed by individual group members. The scope from the previous assessment conducted by TUV NORD Integra bvba showed that there were 211 group members with planted area of 1,717.28 ha. After that (before executing ASA4), 4 group members died and 12 group members have resigned and/or have been sacked by the group. Then, 40 new group members have joined the group. Therefore, there are currently 236 independent smallholder members in this group covering 691 plots and an area of 1,836.30 ha planted with oil palm as details shown in **Table 2**. Based on this total planted area, it can be divided into immature area of 1,771.83 ha and mature area 64.47 ha, respectively. Therefore, only total area with mature “harvested” area at 1,771.83 ha will be used to estimate the FFB production for the current year.

Annual FFB production excluding FFB supplied by new group members in 2015 was about 19,780 tons. While, total annual FFB production excluding the new group members in the current year (2016) is about 17,513 tons. In order to estimate the production for the year 2017, the estimated FFB production of 3.38 tons/rai/year or equal to 21.12 tons/ha/year in 2017 from Krabi Provincial Agricultural Office was adopted. Therefore, the estimated FFB production in the current year would be 37,421 tons/ha/year (**Table 2**).

The group has decided to choose in using of the GreenPalm system (currently, GreenPalm was replaced by RSPO PalmTrace at the beginning of year 2017) to trade certified FFB and other certified products i.e. CPO, PKO, and PKE. While physical trading will not be used even though it is an alternative option obtained from the certification. All FFB received from these group members therefore become non-certified after trading through the PalmTrace system. Then, FFB supplied to either the partnering mill where supported the group administration and also intermediaries as physical trading will become non-certified product. Even though the partnering mill could not take advantage from purchasing FFB from the group, the identity card (ID) issued by group manager for group members is still used to prove which member has supplied the FFB to the partnering mill. The partnering mill prefers to pay for the premium price for those group members because they believe the quality of FFB supplied by the group members. Meanwhile, ID card is no longer use for other mills. It is implied that majority of group members have the freedom to sell directly to other palm oil mills. Some of group members have to sell their FFB to intermediary (ramp palm) due to the location of the plots and partnering mill.

Table 2 : Current profile of the group

Name of the group	Number of group members	Area (Ha)		Estimated FFB production (tons/year)
		Total*	Planted**	
UPOIC Nueakhlong-Khaophanom	236	1,953.44	1,836.30	37,421

*includes productive and non-productive area (infrastructures, conservation, HCV, community use, set aside area etc.)

** immature + Mature Area



1.4 Date of plantings and cycle

The details of the certified area and its land profiles of the group are described in **Table 3** and **Table 4**.

Table 3: Details of Certified Area and Planting Profile

Name of the group	Area (ha)					Area (%)	
	Titled	Certified	Planted	Mature	Immature	Mature	Immature
UPOIC Nueakhlong-Khaophanom	1,953.44	1,953.44	1,836.30	1,771.83	64.47	96.49	3.51

Table 4: Land Profile for the Unplanted Area

Name of the group	Housing & amenities	Conservation area	HCV area	Others
UPOIC Nueakhlong-Khaophanom	10.18	0	0	106.96

While **Table 5** below show the details of the year of establishment of the supplying estates and their planting profiles

Tables 5: Planting Profile for all plots owned by group members.

Year of planting	No. of group members with planting cycle		Maturity	Area (ha)	Percentage of mature/immature
	First cycle	Second cycle			
1982	2	1	Mature	32.91	96.49 % matured 3.51% immature
1985	4		Mature	25.17	
1986	7		Mature	36.18	
1988	3		Mature	21.81	
1989	2		Mature	6.49	
1991	7	1	Mature	24.85	
1992	11		Mature	70.63	
1993	7		Mature	27.91	
1994	8		Mature	35.07	
1995	11		Mature	61.05	
1996	23		Mature	131.92	
1997	44	1	Mature	198.27	
1998	20		Mature	84.18	
1999	32		Mature	144.79	
2000	16		Mature	52.2	
2001	23		Mature	86.23	
2002	27		Mature	106.63	
2003	22		Mature	107.56	
2004	17		Mature	51.89	
2005		29	Mature	73.64	
2006		18	Mature	57.95	
2007		25	Mature	50.36	
2008		20	Mature	72.23	
2009		11	Mature	31.51	
2010		15	Mature	72.62	
2011		11	Mature	35.51	
2012		8	Mature	30.65	
2013		5	Mature	22.31	
2014		7	Immature	23.88	
2015		7	Immature	18.46	
2016		7	Immature	22.13	
Total				1836.3	

Remark: 1. Both onsite inspection and review of the historical land use (in case of new planting) confirmed that there is no new planting after 2005

2. As some group members have more than one plots that were planted in different years, the column showing no. of group members and total no. of group members of 236 are not comparable



1.5 Other certification held (ISO etc.)

None

1.6 Organisational information / contact person

Name of organisation : UPOIC Nueakhlong-Khaophanom
Head office address : 98, Moo 6, Nueakhlong-Khaophanom Road, Hui-Young Sub-District,
Nueakhlong District, Krabi 81130 Thailand

Website : -
Telephone No. : +66 (0) 81 9789814
Fax No. : -
RSPO Membership No. : 1-0120-12-000-00

Contact person:

Name : Mr. Surasit Pisetsit
Position : Group manager
Telephone No. : +66 (0) 81 9789814
Fax No. : -
E-mail : sarizaa@hotmail.com

1.7 Tonnage certified

According to the latest announcement from RSPO executive on December 2014 indicating that the two trading systems of GreenPalm (certificates) and eTrace (physical) are now linked, the group has decided to select trading through GreenPalm (after 1 January 2017, it will be replaced by RSPO PalmTrace). With regard to actual production of FFB for the past year, it was used to estimate the FFB production from 236 group members for the current year as details illustrated in **Table 6**. Meanwhile, estimation of certified volumes of CPO, PK, PKO and PKE were also carried out by using this RSPO guideline. Based on the estimated amount of FFB of 37,421 tons in 2017, it will be used to convert to certified, CPO, PK, PKO and PKE using RSPO guideline in the next 12 months (**Table 6**).

Table 6 is also illustrated the certified products that were showed on the previous RSPO P&C certificate issued by TUV NORD Integra. It is important to note that the FFB production and other certified products that were indicated in the previous certificate was estimated from previous number of group members (211 group members) certified in the last year.

Table 6: Details of material and products for the last and next reporting period

Description	Unit : Tons	
	Actual (+projection) for last reporting period (10/2015 to 10/2016)	Projected for next reporting period (2/2017 to 2/2018)
Certified FFB	30,911	37,421
Certified CPO	6,182	7,484
Certified PK	1,545	1,871
Certified PKO	695	841
Certified PKE	850	1,029



1.8 Time bound plan / Progress against time bound plan

Currently, there are 236 independent smallholders member of the group. All of them are included in the certification assessment. At present, there are no members (perspective members) excluded from the certification. Therefore, there is no time bound plan required at the time of assessment.

1.9 Compliance with partial certification requirements

Requirements		Assessment findings
a.	The parent organization or one of its majority ¹ owned and / or managed subsidiaries is member of RSPO. The requirements (b) to (j) will be applicable, whether the registered RSPO member is the holding company or one of its subsidiaries;	Not applicable
b.	A challenging time-bound plan for certifying all its relevant entities ² is submitted to the Certification Body (CB) during the first certification audit. The time-bound plan should contain a list of subsidiaries, estates and mills. The Certification Body will be responsible for reviewing the appropriateness of this plan, taking into account comments received from stakeholders following the public consultation process. Progress towards this plan will be verified and reported on in subsequent annual surveillance assessments (see Annex 4). Where the Certification Body conducting the surveillance audit is different from that which first accepted the time-bound plan, the later Certification Body shall accept the appropriateness of the time-bound plan at the moment of first acceptance and shall only check continued appropriateness.	All formal members of the UPOIC Nuekhlong-Khaophanom are certified. A requirement for the time-bound plan is not relevant.
c.	Any revision to the time-bound plan or to the circumstances of the company shall cause the plan to be reviewed (as provided for in the guidance on surveillance assessments, Annex 4) for whether it is still appropriate, such that changes to the time-bound plan are permitted only where the organisation can demonstrate that they are justified. The requirements will also apply to any newly acquired subsidiary from the moment that the company is legally registered with the local notary or chamber of commerce (or equivalent).	Not applicable because all formal members of the UPOIC Nuekhlong-Khaophanom are certified. A requirement for the time-bound plan is not relevant.
d.	Where there are isolated lapses in implementation of a time-bound plan, a minor non-compliance is raised. Where there is evidence of systematic failure to proceed with implementation of the plan, a major non-compliance is raised.	Not applicable because all formal members of the UPOIC Nuekhlong-Khaophanom are certified. A requirement for the time-bound plan is not relevant.
e.	No replacement of primary forest or any area identified as containing High Conservation Values (HCVs) or required to maintain or enhance HCVs in accordance with RSPO criterion 7.3. Any new plantings since January 1st 2010 must comply with the RSPO New Plantings Procedure (Annex 5).	Not applicable because all formal members of the UPOIC Nuekhlong-Khaophanom are certified. A requirement for the time-bound plan is not relevant.
f.	Land conflicts, if any, are being resolved through a mutually agreed process, e.g. RSPO Grievance procedure or Dispute Settlement Facility, in accordance with RSPO criteria 6.4, 7.5 and 7.6.	Not applicable because all formal members of the UPOIC Nuekhlong-Khaophanom are certified. A requirement for the time-bound plan is not relevant.
g.	Labour disputes, if any, are being resolved	Not applicable because all formal

	through a mutually agreed process, in accordance with RSPO criterion 6.3.	members of the UPOIC Nuekhlong-Khaophanom are certified. A requirement for the time-bound plan is not relevant.
h.	Legal non-compliance, if any, are being resolved in accordance with the legal requirements, with reference to RSPO criteria 2.1 and 2.2.	Not applicable because all formal members of the UPOIC Nuekhlong-Khaophanom are certified. A requirement for the time-bound plan is not relevant.

1.10 Progress of associated smallholders or outgrowers towards compliance with relevant standards

Not applicable since this scheme is applicable only RSPO P&C certification for mill and supply bases only

2.0 Assessment Process

2.1 Assessment methodology and programme

The assessment for certification was performed in conformity with the procedures as laid down in Bureau Veritas BMS procedures especially diversity of group members, number of new group members, capacity of group manager and history of non-conformity. The normative references used for the assessment are RSPO Standard for Group Certification (amendment April 2013) and RSPO P&C for Independent Smallholder under Group Certification (TH-NI 2012).

The planning for this assessment was guided according to the RSPO Certification System Document. Sample size for the surveillance certification assessment was determined using risk assessment. The sampling formula used is $0.8 \sqrt{y} * z$, where y is the number of group members, and z is the multiplier defined by the risk assessment. Based on risk assessment from desk review, high risk level ($z = 1.2$) was determined. Therefore, total number of smallholder to be audited resulting from $0.8 * \text{square root of } 236 * 1.2$ was 15.

The assessment was conducted by visiting among others the oil palm fields, HCV habitats, local communities, chemical and waste storage areas owned by group members, landfill and other workplaces. Interviews were held with the group manager and the group management committees of its FFB produce, employees, contractors and other relevant stakeholders. In addition, related records and other documentation were also inspected.

Details of the actual assessment programme are given in **Appendix 3**.

2.2 Date of next surveillance visit

The next surveillance assessment shall be carried out within 12 months from the date of this assessment completed, but not sooner than 9 months.

2.3 Lead Assessor and Assessment Team

The assessment team consisted of two assessors. The details of the assessors and their qualification are as follows:

- 1) **Name of team leader** : Dr. Chaiyaporn Seekao (CS)
Roles: Assessment Team Leader
Field: Environmental, Good Agricultural Practice, Supply Chain, HCV, energy saving, greenhouse gas management, regulatory, Integrated Pest Management, pesticide and fertilizer use, ecological and social aspect.
Qualification: Qualification of the lead auditor / audit team leader is provided in the Table below



Requirement	Qualifications	Compliance
A minimum of post high school (post secondary school) training in either agriculture/forestry, environmental science or social sciences;	<ul style="list-style-type: none"> - May 2015, Ph.D (Environmental Management) full Scholarship at The International Postgraduate Programs in Environmental Management (Hazardous Waste Management), Chulalongkorn University, THAILAND - April, 2006, hold Master of Science (Sustainable Land Use and Natural Resource Management) degree from Kasetsart University, THAILAND. - April, 2002, hold Bachelor of Science (Fisheries) degree from Kasetsart University, THAILAND 	Yes
At least 5 years professional experience in area of work relevant to the assessment (e.g., palm oil management; agriculture/forestry; ecology; social science);	<ul style="list-style-type: none"> - October 2009 to present: work at TÜV NORD (Thailand) Ltd. and was responsible for several standards such as ISO9001:2008, GMP, HACCP, FAMI-QS, GLOBALG.A.P and RSPO - Year 2008-2009: worked at Team Consulting Engineering and Management Co., Ltd., consultancy company, and was responsible for conducting the Environmental Impact Assessment (EIA) study which includes HCV, biodiversity social and health impact assessment - Year 2006-2008: worked Virbac (Thailand) Co.,Ltd , responsible for Act as GMP and HACCP (QMR) - Year 2005-2006: worked at Food and Agriculture Organization of the United Nations (FAO) - Year 2002-2005: worked at Department of Fisheries, Ministry of Agriculture and Cooperatives 	Yes
Training in the practical application of the RSPO criteria, and RSPO certification systems;	<ul style="list-style-type: none"> - RSPO Lead Auditor Course Organized by Stepwise Support Programme during April 12-16, 2010, Johor Bahru, Malaysia - HCV and its application in RSPO Organized by WildAsia during August 28-29, 2012 at Krabi, Thailand 	Yes
Successfully completion of an ISO 9000:19011 lead assessors course;	<ul style="list-style-type: none"> - ISO 9001:2008 Series Auditor/Lead Auditor Training Course (Course No: A17086 Certificated by IRCA) Organized by Robere & Association (Thailand) Ltd. October 26-30, 2009, Bangkok, Thailand 	Yes
A supervised period of training in practical assessment against the RSPO criteria or similar sustainability standards, with a minimum of 15 days assessment experience and at least 3 assessments at different organisations.	Having more than 50 days of audit in more than 10 palm oil companies (March 2010 – December 2015)	Yes

2) **Name of team members** : Mr. Prapas Noras and Associate Professor Dr. Opas Pimpa

Roles: Assessor

Field: Here below are areas of expertise of each team member:

1. Mr. Prapas Noras (PN) : environmental management, regulatory, social aspect, health and safety and workers welfare issues
2. Associate Professor Dr. Opas Pimpa (OP) : expert for mill and palm oil plantation and good agricultural practices, business management, pesticide and fertilizer use, Integrated Pest Management, and health and safety issues.

Qualification: Qualification of the lead auditor and audit team member are provided in the Table below

Requirement	Assessor	Qualification	Compliance
Field working experience in the palm oil sector, or demonstrable equivalent.	Dr. Chaiyaporn Seekao (CS)	<ul style="list-style-type: none"> • Since 2010 experience as RSPO auditor performing more than 10 RSPO P&C audits • Year 2005-2006: worked at Food and Agriculture Organization of the United Nations (FAO) as responsible for Closely coordinate with governmental sector, international organization, national organization, embassy, university and NGOs where has involved in providing tsunami relief to establish the tsunami assistance database, Involve to study and establish the short and long term plans to assist the tsunami victims in Thailand especially recovery their household, occupation and livelihood and Conduct the public hearing/consultations for obtaining the comments and any feedback from all stakeholders. 	Yes
	Associate Prof Dr. Opas Pimpa (OP)	More than 10 years experience on the research related to palm oil industry and teaching to both under graduate and post graduate in the university. 10 years experience in giving the training to local palm oil growers in southern province of Thailand. Palm oil grower is another career of Professor's family	
Good Agricultural Practices (GAP), and Integrated Pest Management (IPM), pesticide and fertilizer use.	Dr. Chaiyaporn Seekao (CS)	<p>More than 3 years auditing experience against GLOBALG.A.P which is the standard concerning to good agriculture practices.</p> <p>More than 5 years of experience with Department of Fisheries in involving to establish the Good Agriculture Standard released by Department of Fisheries of Thailand. Besides, experience obtained while working with Food and Agriculture Organization of the United Nations for rehabilitation project for agricultural farmers who were affected by tsunami in 2004.</p> <p>Since 2010 experience as RSPO auditor performing more than 10 RSPO P&C audits</p>	Yes
	Associate Prof Dr. Opas Pimpa (OP)	More than 10 years experience on the research related to palm oil industry and teaching to both under graduate and post graduate in the university. 10 years experience in giving the training to local palm oil growers in southern province of	



		Thailand. GAP, IPM and the use of pesticide and fertilizer are the one topic given in the studying and training to many stakeholders.	
Health and safety auditing on the farm and in processing facilities, for example OHSAS 18001 or Occupational, Health & Safety Assurance System.	Dr. Chaiyaporn Seekao (CS)	More than 3 years auditing experience against GLOBALG.A.P which is the standard concerning to the health and safety on the farm and processing level	Yes
	Mr. Prapas Noras (PN)	He has obtained the successful training courses and qualified as auditor for several standards e.g ISO9001, ISO14001, OHSAS18001	
Worker welfare issues and social auditing experience, for example with SA8000 or related social or ethical accountability codes.	Dr. Chaiyaporn Seekao (CS)	More than 10 environmental and social impact assessment (ESIA) for huge project in Thailand and overseas	Yes
	Mr. Prapas Noras (PN)	He has obtained the successful training courses and qualified as auditor for several standards e.g ISO9001, ISO14001, OHSAS18001	
Environmental and ecological auditing, for example experience with organic agriculture, ISO 14001 or Environmental Management Systems (EMS).	Dr. Chaiyaporn Seekao (CS)	<ul style="list-style-type: none"> • Year 2008-2009: worked at Team Consulting Engineering and Management Co., Ltd., consultancy company, and had responsibility to Conduct the Environmental Impact Assessment (EIA) study which includes HCV, biodiversity social and health impact assessment CS also performed an audit and monitoring at project sites during the construction and commissioning period, to ensure that all construction and commission process/activities meet with EIA mitigation measures. • Year 2006-2008: worked at Virbac (Thailand) Co.,Ltd with responsible as GMP and HACCP coordinator (QMR) to coordinate with Department of Fisheries for GMP and HACCP certification, • Year 2005-2006: worked at Food and Agriculture Organization of the United Nations (FAO) with responsibility to coordinate with governmental sector, international organization, national organization, embassy, university and NGOs • Year 2002-2005: worked at Department of Fisheries, Ministry of Agriculture and Cooperatives 	Yes
	Mr. Prapas Noras (PN)	He has obtained the successful training courses and qualified as auditor for several standards e.g ISO9001, ISO14001, OHSAS18001	
Fluency in the main languages relevant to the location where the specific assessment is taking place, including the languages of	Dr. Chaiyaporn Seekao (CS)	Thai language is our mother language. This language will be used for the audit	Yes
	Mr. Prapas Noras (PN)	Thai language is our mother language. This language will be used	



any potentially affected parties such as local communities.		for the audit	
	Associate Prof Dr. Benchamaporn Pimpa (BP)	Thai language is our mother language. This language will be used for the audit	

2.4 Certification body

Created in 1828, Bureau Veritas is a global leader in Testing, Inspection and Certification (TIC), delivering high quality services to help clients meet the growing challenges of quality, safety, environmental protection and social responsibility.

As a trusted partner, Bureau Veritas offers innovative solutions that go beyond simple compliance with regulations and standards, reducing risk, improving performance and promoting sustainable development.

Bureau Veritas core values include integrity and ethics, impartial counsel and validation, customer focus and safety at work.

Bureau Veritas is recognized and accredited by major national and international organizations.

2.5 Stakeholder consultation process

Stakeholder consultation began since the certification assessment conducted by BSI and still conducted annually during the annual surveillance assessment conducted by TUV NORD Integra bvba. The latest stakeholder consultation meeting conducted by TUV NORD Integra bvba was on 5 October 2015. As some of group members are also in charge of community leader, the monthly community meeting organized by community leader is another chance for discussion on villager's concern. Therefore, group took this advantage to review stakeholder's perspective on the group's operation through the community meeting organized by the group member who is also community leader. The group wants to hear from the public on any impacts caused by the plantation activities without being bound by RSPO requirements.

Meetings and interview with the relevant stakeholders who were listed in Table below were also arranged during the on-site assessment. The audit team interviewed stakeholders who had participated the public consultation meeting to obtain both negative and positive information without interference from the members of the group and group management. This discussion is done to allow the stakeholders give their feedback freely. During the discussion, the stakeholders were asked openly several questions to seek feedback on the performance of the independent smallholders with respect to RSPO requirements. Several issues were raised by audit team to stakeholders during the public consultation meetings e.g. land ownership, legal issues, agriculture management practices, environment and social performances, social impacts caused by the member's plantation operation, and environmental impacts caused by the member's plantation operation. Outcome from the stakeholders being consulted is as in section 3.3.

No	Position and Statutory Bodies	Name of stakeholder
1	Head of Khaopanom District	Mr Nikorn Adomsri
2	Lecturer from Agriculture and Technology College	Mr Sanae Chomanee
3	Chief Nueakhlomg Agricultural Office	Mr Krit Kaewtung
4	Chief of Krabi Land Development Office	Mr. Panya Jaisamut
5	Chief of Agriculture District Office	Mr. Somchai Nakfon



6	Head of Moo 1 village, Khaopanom District	Mr. Pattanachai Na Srisaket
7	Head of Moo 3 village, Huay Yoong and subcontractor for harvesting and spraying pesticide	Mr. Sanan Jeenpua

The method of consultation with the workers, contractors and staff were through random sampling from list of stakeholders provided by the group. Moreover, the consultations which were conducted at the plots owned by selected group members for the 4th surveillance assessment had included solicitation of comments on issues relevant to principles 4, 5 and 6 of the RPSO P&C Standard.

3.0 Assessment Findings

3.1 Summary of Findings

The assessment was conducted as planned using the methodology described in Section 2.1. Findings against each of the RSPO indicators for both RSPO Standard for Group Certification (amendment April 2013) and RSPO P&C for Independent Smallholder under Group Certification (TH-NI 2012) are reported below. The summary of the assessment can be seen below, where “Evidence/Observation/Findings” column reflects the findings in accordance with each criteria and indicator.

A total of 6 major non-conformities were raised. 1 major non-conformity was raised against RSPO P&C for Independent Smallholder under Group Certification (TH-NI 2012). While 5 major non-conformities were raised against RSPO for Group Certification as details shown in **Appendix 4**. The group has taken necessary corrective actions in order to close the major non-conformities raised. Since there is no minor non-conformities from this first surveillance assessment, it will not be verified in the next assessment.

Moreover, the verification comments for the non-conformities raised in the previous assessment can be seen in **Appendix 5**.



Assessment finding for RSPO Standard for Group Certification

1. Group Requirements

Producers can form or join a group for group certification. The organization and its members shall demonstrate their ability to meet the RSPO Standard for Group Certification and the relevant RSPO Standard for Sustainable Oil Palm Production.

Requirements			Compliance (Yes/No)	Findings	
1.1	Group Elements	1.1.1	The group shall be managed by a central administration (i.e. The Group Manager), which is responsible for ensuring the group's compliance with the applicable standards and manages the Group Management Documentation.	Yes	All group members are managed by group of managers which composes of 4 members (Surasit Pichetsil, Kerm Kaewkao, Thaweep Na Thalang, and Sompas Chuakerd). Group management and teams are responsible to establish relevant documents. External consultant was hired by the group to give an advice for establishment of the management system documentation. Group manager and teams are also responsible to ensure that implementation of all group members are in compliance by the RSPO standard and group's policy. One of system used to ensure the compliance with the standard is internal audit at the group member's sites
		1.1.2	The group shall consist of group members who have formally joined the group.	Yes	Currently, number of formal members is 236. Number of formal members since last surveillance audit in 2015 was 211.
		1.1.3	The Group Management Documentation shall include the documenting and monitoring of all the individual group members for membership status, production process, and other relevant aspects to ensure compliance with the relevant RSPO Standard for Sustainable Oil Palm Production and the RSPO Group Certification Requirements.	Yes	Mechanism to inform the change that affects to the membership status in the database has been established. All group members have to inform the change that affects to the membership status. Form (Ror Tor Bor 001) for recording the change was established. For example, the change was informed by Mr Niwat who wanted to transfer the right as group member to his wife (Mrs Anonglak Kanchana) because he has another career and has no availability to involve the group's activities.
		1.1.4	The Group Manager shall specify in the Group Management Documentation the maximum number of members that can be supported by the management system and the human resource and technical capacities of the Group Manager.	Yes	Not exceed than 500 group members.



1.2	Compliance with standards	1.2.1	All group members that are formal members of the group seeking RSPO certification under group certification shall comply with the required relevant RSPO Standard for Sustainable Oil Palm Production.	Yes	All plots owned by new group member have been audited against RSPO standard for sustainable oil palm production (TH-NI 2012) before becoming the group member. For instance, new group members (Witoon Srisawad and Renu) was assessed on 10 June 2016 before becoming the formal member of the group
		1.2.2	Group managers may run a programme to support prospective members in achieving compliance with RSPO requirements. Where such a programme is in place, there must be robust mechanisms in place to ensure that neither the prospective members nor the Group Manager makes any claim suggesting they are RSPO certified. Once the prospective member is in compliance with the RSPO standard they shall be formally included as a member of the certified group. Until RSPO compliance is achieved, the FFB production from prospective member sites will not count towards the total certified production of the group.	Yes	Plan for promoting the prospective members for year 2017 is set by the group. At least of 30 new group members are expected in the next year. Plan to promote or support prospective members composes of training on relevant RSPO standard, initial evaluation/assessment, keeping record training by farm advisor and visiting successful farm. This plan will be completed within 3 months after receiving the application from the prospective members
		1.2.3	Formal members of the Group shall sign an agreement with the Group Manager committing to achieving compliance with the relevant RSPO standard for sustainable oil palm production. The Group Manager and each member shall keep copies of the agreement.	Yes	In particular new formal members, who were committed to join the group of independent smallholder and to achieve compliance with the requirements of RSPO standard since the beginning of year 2015 and 2016, have signed an agreement with the group manager. All sample members were asked to show the agreement signed with group manager at both; administration office and at their plot. For instance, agreement between Ms Sunan Sungrod who was one of group member chosen for the surveillance assessment and group manager has been signed since 21.1.2013. The content of signed agreement reveal that group member committed himself to achieve compliance with RSPO standard
		1.2.4	All the individual group members shall adhere to and show evidence that the internal requirements, as set out in the systems, programmes or policies adopted by the Group Manager are met.	Yes	Based on the result of internal audit by group and external audit by CB revealed that individual group member could do as set out in the system and policies
		1.2.5	The group manager shall comply with the requirements of the RSPO Standard for Group Certification.	Yes	Group manager was assessed to check the compliance with the requirement of RSPO standard for group certification on 16 October 2016. Mr Sompong Adumsri (group member) was assigned as internal auditor who assessed the group. Result from the internal assessment showed that no non-conformity was raised. He was trained by Dr Benchamaporn Pimpa on 16 November 2015



		1.2.6	There shall be evidence to show that formal group members, individually and collectively, continually strive to maintain their compliance with the relevant RSPO Standard for Sustainable Oil Palm Production.	Yes	Internal audit checklist modified from RSPO P&C for Independent Smallholder under Group Certification (TH-NI 2012) was used to monitor the compliance with the standard. Results of internal audit showed that all implementation of formal group members are in compliance with RSPO requirements even though some non-conformities were raised from the internal audit
1.3	Group Manager The Group Manager of the Group shall demonstrate its capacity for managing group certification and performance assessment against the RSPO Standard for Group Certification.	1.3.1	The Group Manager shall be either a legal entity or an individual acting as a legal entity.	Yes	Group was regulated by Nue Khlong Agricultural Office on 29 December 2015. The registration no. given by the Nue Khlong Agricultural Office is 8-81-08-08/2-0010. However, the name appeared on the RSPO membership is different with the registration license. Mr. Surasit Pisetsit is listed in the approval letter from Nue Khlong Agricultural Office.
		1.3.2	If the Group Manager is not an individual, there shall be a description of the general structure of the Group Manager detailing the positions and responsibilities of all personnel clearly identified.	Yes	Structure of the group consisting of group chairman (group of managers who responsible as group manager), sustainability system committee, farm advisor, OHS committee, social and labor committee, environment committee, plantation committee, marketing and publication committee, financial committee and database officer was described in the sustainability manual Kor Yor Por-001 revision 00 date 21.1.2012. Group committee will be selected or voted through the group meeting in every two year. However, there is no change on the structure of the group since the previous assessment
		1.3.3	The Group Manager and/or their personnel shall be able to communicate in a language understood by all group members (in both spoken and written form).	Yes	His nationality is Thai. Group manager was born in Krabi
		1.3.4	The Group Manager and/or their personnel shall be able to demonstrate knowledge of the requirements of oil palm production, the RSPO Standard for Sustainable Oil Palm Production, the RSPO Standard for Group Certification, and internal group procedures and policies.	Yes	Not only group manager but also team was trained by the GIZ, Office of Agricultural Economics (OAE) and local university namely Prince of Songkhla University on the knowledge of the relevant RSPO standards. For example, they have been trained on fertilizer application on 21.4.2014 and sustainable palm oil production given by Dr Suganya on 22.7.2014. Latest training for the group manager and group members was held on 26.12.2015



	1.3.5	The Group Manager and/or their personnel shall not have any conflict of interest likely to affect their capacity to meet the requirements for Group Managers and shall be able to provide evidence of this.	Yes	All group members are managed by group of managers which composes of 4 members (Surasit Pichetsil, Kerm Kaewkao, Thaweep Na Thalang, and Sompas Chuakerd). All group of managers are not involved to lead of conflict of interest especially carry out the audit for their own plots. To show the absence of evidence for conflict of interest, for example, Khun Sompas who is one of group of managers was assessed by Naraporn Songkerd on 18.8.2014
	1.3.6	The Group Manager shall demonstrate sufficient resources – i.e. human, financial, physical and other relevant resources – to enable effective and impartial technical and administrative management of Group Certification.	Yes	At the time of surveillance assessment, there are number of internal auditors and 4 farm advisors. Group demonstrated that the number of staffs who are especially assisted group manager to visit and audit the group members is now sufficient for maintaining the compliance with the group and RSPO requirements. 4 sub-group management /managers were also assigned by group manager to take care for those group members who are not located nearby the office.
	1.3.7	The Group Manager shall have the capacity to control, monitor and evaluate all members pertaining to their compliance to the RSPO requirements including communicating with them and visiting them at the required frequencies.	Yes	Based on the minute of meeting on 29 September 2016, the group committees were assigned by the group manager to assist in visiting the group members. The ratio between each committee and group members is about 1:12 which could demonstrate that it is sufficient to monitor regularly. Visiting is used to monitor the compliance with RSPO requirement.
	1.3.8	The Group Manager shall have a documented system which sets out its mission and objectives, policies and procedures for operational management and decision making in order to demonstrate ability to manage the group in a systematic and effective manner.	Yes	All relevant system and procedures for group manager to manage the group members are indicated in sustainability manual Kor Yor Por-001 revision 00 date 21.1.2012
	1.3.9	There shall be clear policies and procedures for communication between the Group Manager and group members.	Yes	Policies and procedures are indicated in the page 28 of the sustainability manual. Monthly meetings and sharing the documents during the meeting were one of procedure for communication between the group and group members. Latest meetings between the group manager and group members were carried out on 11.3.2015.



	1.3.10	The group manager shall ensure all formal and prospective members understand the relevant RSPO Standards. This may include the development of a strategic plan on how group certification shall be achieved for prospective members, and the identification, definition and/or provision of training needs and/or communication strategies relevant to the implementation of the applicable RSPO Standard for Sustainable Oil Palm Production and the RSPO Standard for Group Certification. This can be provided directly by the Group Manager, an externally run training course or other means of provision of training or expertise.	Yes	New group member especially Khun Renu has been trained on the RSPO requirements on 21.8.2016 by Dr Benchamaporn. This training is one of the strategic plan for prospective members in order to ensure that they can achieve the RSPO standard and group's requirements
	1.3.11	The Group Manager shall ensure that if any group marketing system is developed and managed for the group, this is mutually fair and transparent to enable the securing of raw materials or trading of the group members' collective produce, or setting-up of an equivalent arrangement. The group marketing system shall include; rules for purchasing and selling within the group, rules for claims of RSPO certified, dissemination of markets, and price information and related logistics (i.e. transportation to mill etc).	Yes	Based on the minute of the meeting on 22 March 2016, the group has decided to sell their RSPO credit to GreenPalm (it will be replaced by RSPO PalmTrace) at the beginning of year 2017. Therefore, the collective procedure for certified FFB is not required
	1.3.12	The Group Manager shall ensure that the total of all sales and claims of RSPO certified FFB production from group members does not exceed the total certified FFB production of the group in its entirety.	Yes	As the group decided to choose trading via GreenPalm, the total certified volume is controlled by the GreenPalm. Currently, the volume of certified products from the previous certificate is in process of trade through GreenPalm



2. Group Management Documentation Requirements

The Group Manager assesses compliance of the plantation practices and manages group members to ensure compliance with the RSPO Standard for Group Certification and the relevant RSPO Standard for Sustainable Oil Palm Production. The Group Manager shall have a documented internal system that contains the elements necessary for assessing the performance of group members and their plantations.

Requirements				Compliance (Yes/No)	Findings
2.1	Group Management Documentation structure and content The Group Manager shall have its operational structure, policies and procedures, and basic information on individual group members documented. The system verifies whether operations within the group comply with the RSPO Standard for Group Certification Requirement and the relevant RSPO Standard for Sustainable Oil Palm Production.	2.1.1	The Group Manager shall have an operating structure that defines group management documentation (i.e. internal control systems), decision-making and responsibilities within the group.	Yes	It was indicated in sustainability manual Kor Yor Por-001 revision 00 date 21.1.2012
		2.1.2	All group records shall be retained for at least 5 years.	No (major)	Assessment report used to carry out for prospective members before becoming formal members since 2012 e.g. Mr Sanan Sangrod is not available to support the procedure written in sustainability manual that all records shall be retained for at least 5 years. From the previous assessment conducted by previous CB (TUV NORD Integra), minor non-conformity was already raised. Therefore, this non-conformity will be escalated to major non-conformity
		2.1.3	The Group Manager shall have documented membership requirements for the participation of individual members in the group. This shall include:		
		2.1.3.1	Requirements and procedures for joining the group.	Yes	It was indicated in sustainability manual Kor Yor Por-001
		2.1.3.2	Requirements and procedures for leaving the group.	Yes	It was indicated in sustainability manual Kor Yor Por-001
		2.1.3.3	Procedures for incorporating a remedial system for member non-compliance.	Yes	It was indicated in sustainability manual Kor Yor Por-001
		2.1.3.4	Procedures for expulsion from the group.	Yes	In case of expulsion from the group, votes above 2 of 3 from the number of group of managers will be become the resolution for the expulsion from the group
		2.1.4	There shall be a group-level operation manual that includes the following:		
		2.1.4.1	Internal assessment protocols.	Yes	Internal audit checklist adopted RSPO requirements was established. Internal audit protocol was indicated in sustainability manual Kor Yor Por-001



	2.1.4.2	Policies and procedures for accepting / removing members.	Yes	It was indicated in sustainability manual Kor Yor Por-001
	2.1.4.3	Policies and procedures for applying corrective action requests (CARs) to group members for non-compliance with the relevant RSPO standards.	Yes	Procedure for applying any CARs issued by external and internal audit is written in the manual Kor Yor Por-001. Group members who were not chosen for the internal assessment have been informed by group committee to check whether the same non-conformity was still happen. Application "Line" was used for the communication.
	2.1.4.4	Procedures for communicating corrective action requests (CARs).	Yes	Even though application "Line" in cellphone was used for communication, zone committee will be responsible to visit and communicate with those group members who do not have the smartphone.
	2.1.4.5	Clear description of the process to fulfill any correction action requests (CARs) issued internally by the Group Manager or by the certification body including timelines and the implications if any of the CARs are not complied with.	Yes	2 month will be given for closing non-compliance with RSPO requirements and group requirements
	2.1.4.6	Policies and procedures for handling complaints, appeals, corrective action requests (CARs), and group member performance assessment.	Yes	Procedure for the appeal raised by the formal member on the performance of the assessment was indicated in sustainability manual Kor Yor Por-001
	2.1.4.7	Policies and procedures for group monitoring, including carrying out and updating group risk assessment and annual surveillance of group members.	Yes	It was indicated in sustainability manual Kor Yor Por-001
	2.1.5	The Group Manager shall develop and maintain a database of group members included within the Group Scheme. This includes the information below as a minimum for each member:		
	2.1.5.1	A copy of each group member"s application form to the group with relevant information for each member that is updated regularly, i.e. name of producer, address, contact details, type of land ownership, size of plantation area, location, etc.	Yes	Existing database recorded in the excel file was showed name of group member (211 existing member, 4 members died and 12 members who have now resigned and sacked from the group, and 40 new group members), address, contact details, size of land area, location, type of land ownership in each plot, Besides, some information related to palm oil plantation is also recorded e.g. year of planting, soil type, type of palm oil species, and irrigation system.



		<p>2.1.5.2 Total annual production and production per unit area (hectare) for previous years, from at least one year prior to joining the group, and the estimated production for the current year.</p>	<p>No (major)</p>	<p>The production in the previous year especially from 40 new group members is recorded into the group database. However, it is important to note that the production in the previous year may lower than the current year because new group members just started to collect weighing bills that issued by the mill after joining the group in order to account as the total FFB production for the previous year prior to joining the group. However, the total annual production in 2015 was about 19,780 tons.</p> <p>Meanwhile, the actual FFB production during January - September 2016 are equal to 1,870.508 tons, 2,552.769 tons, 3,399.478 tons, 3,094.927 tons, 2,526.341 tons, 1,971.442 tons, 839.203 tons, 623.617 tons, and 451.371 tons, respectively.</p> <p>Since the planted area recorded in the database of the group is incorrect, moreover, the group has not estimated FFB production for the current year. Even though major non-conformity against this clause was raised by previous CB, the finding caused the non-conformity was not related to above-mentioned finding. Therefore, major non-conformity was still raised</p>
		<p>2.1.5.3 Results from the last internal and external assessments showing performance levels to the relevant RSPO Standard for Sustainable Oil Palm Production, including dates these were carried out, any plans for implemented improvement and corrective action requests (CARs) raised and closed out for each group member.</p>	<p>Yes</p>	<p>Database for results from the last internal and external assessments showing performance levels to the relevant RSPO Standard for Sustainable Oil Palm Production, including dates these were carried out, any plans for implemented improvement and corrective action requests were established. This database can be used as the internal monitoring system to ensure that all group members will be assessed once during the certificate cycle.</p>
		<p>2.1.5.4 The date of group membership acceptance and date of departure or expulsion from the group if relevant.</p>	<p>No (major)</p>	<p>In the database, date of departure or expulsion for those 12 group members is not recorded in the database of the group. Even though major non-conformity against this clause was raised by previous CB, the finding caused the non-conformity was not related to above-mentioned finding. Therefore, major non-conformity was still raised</p>



	2.1.5.5	Maps of the plantation area for each group member. This can be in the form of individual maps or a collective map covering all group members.	No (major)	Maps of the plantation area especially for those group members who were joined the group since 2012 recorded in the group were not consistency with the actual crosscheck during the on-site audit. Even though major non-conformity against this clause was raised by previous CB, the finding caused the non-conformity was not related to above-mentioned finding. Therefore, major non-conformity was still raised
	2.1.6	A summary of all the data on land use (in hectares) shall be kept and regularly updated covering the entire group that includes at least the following:		
	2.1.6.1	Total overall land area for each group member.	Yes	Total overall land area according to the land title is 12,209 rai or 1,953.44 ha
	2.1.6.2	Total oil palm planted area for each group member.	No (major)	Total planted area which will be total certified production area of the group cannot be summarized during the audit because the planted area recorded in the database is incorrect. Even though major non-conformity against this clause was raised by previous CB, the finding caused the non-conformity was not related to above-mentioned finding. Therefore, major non-conformity was still raised
	2.1.6.3	Total RSPO certified production area for each group member.	No (major)	Total planted area which will be total certified production area of the group cannot be summarized during the audit because the planted area recorded in the database is incorrect. Even though major non-conformity against this clause was raised by previous CB, the finding caused the non-conformity was not related to above-mentioned finding. Therefore, major non-conformity was still raised
	2.1.6.4	Other crop production areas (i.e. non oil palm) for each group member if any.	Yes	Total other crop production especially rubber plantation is 487 rai or equal to 77.92 ha. Moreover, there are also 18.20 rai (2.91 ha) of pond area and 11 rai (1.76 ha) of livestock area.
	2.1.6.5	Total undeveloped area or areas set aside for any particular reason (i.e. conservation, customary, identified HCV etc) for each group member, if any.	Yes	There is no HCV area that needs to be recorded in the database of the group. Only undeveloped area of 4.96 ha is recorded in the database
	2.1.6.6	Total area with infrastructure for each group member, if any.	Yes	Housing area is 61 rai or 9.76 ha



UNIVERSITAS
VERITAS

2.2	Internal assessment system	2.2.1	Prospective members intending to join the group to be included under group certification shall only be allowed to become formal members of the group after an initial compliance assessment for entry by the Group Manager. This initial assessment will determine that all group members who formally join the group with the intention of being included under group certification, are able fulfill the group membership requirements and are able to meet the relevant RSPO Standard for Sustainable Oil Palm Production	Yes	Procedure for acceptance new formal members has been revised. All prospective members are required to assess against RSPO standard for sustainable oil palm production (TH-NI 2012) before becoming formal member. Now, all new group members were re-assessed against RSPO standard for smallholder
		2.2.2	The Group Manager shall implement a regular and ongoing internal assessment programme for all current group members that includes at least the following:		
		2.2.2.1	Internal assessments shall be documented and these documents maintained for 5 years.	Yes	Internal audit report done for all members in 2013-2015 were maintained and available for verification by auditor during the external audit to ensure that all documents are maintained for 5 years. Internal audit for Aporn Nakorn who was assessed in 2014 was randomly checked.
		2.2.2.2	Regular (at least annual) internal assessment visits to a sample of group members to confirm continued compliance with all the requirements of the relevant RSPO Standard for Sustainable Oil Palm Production and RSPO Standard for Group Certification. All members shall be monitored at least once during the period of validity of the group certificate (normally 5 years).	Yes	Group was created the database for monitoring which group members have been audited in which year. This database can be used as the internal monitoring system to ensure that all group members will be assessed once during the certificate cycle.
		2.2.2.3	The Group Manager shall identify the relevant RSPO Standard for Sustainable Oil Palm Production that is appropriate for each group member. It is the performance against this standard that is assessed at each internal assessment.	Yes	RSPO P&C for Independent Smallholder under Group Certification (TH-NI 2012) was used for internal assessment
		2.2.2.4	The sample size for internal assessments shall be based on a risk assessment of the group members, where a higher risk requires a higher sample size.	Yes	The sample size for internal assessment was determined by using high risk.



	2.2.2.5	The sample size shall be determined by the formula $(0.8/y) \times (z)$, where z is the multiplier defined by the risk assessment. Low risk = multiplier of 1, medium risk = multiplier of 1.2, high risk = multiplier of 1.4 (see Table 1 - refer standard).	Yes	Even though the result from calculation required the samples to be chosen for internal assessment was only 18 $(0.8 * \text{square root } 241 \text{ (no. of group member before the date of audit)} * 1.4)$, the group determined to audit 25 group members instead
	2.2.2.6	The group shall use a minimum sample to be visited annually for internal assessment of $(0.8/y)$, where y is the number of group members, and where selection of group members is based on random selection techniques.	Yes	25 group members including new group members (Khun Prapa Rattanapan and Khun Rattana Noonjen) were chosen for internal assessment according to the schedule for year 2016.
	2.2.2.7	The Group Manager shall ensure that different group members are visited in each annual internal assessment to those that have been selected for assessment by the certification body, unless there are circumstances which require a revisit of the same members (e.g. pending corrective action requests (CARs), complaints received from stakeholders, risk factors etc).	Yes	Totally, three group members (Khun Anonglak Kanchana, Komkrit Chaiyachit and Jamnean Adumsri) have been raised the non-conformity by the group internal auditor. For instance, Khun Jamnean Adumsi and Khun Komkrit Chaiyachit were assessed by internal auditor (Pornsiri Laknukul) on 5.7.2016. Result from the internal assessment found the non-conformity related to the no record of fertilizer application. This non-conformity was closed on 10.7.2016 by revisiting
	2.2.2.8	Additional internal assessments shall be scheduled when potential problems arise or when the Group Manager receives information from stakeholders about alleged non-conformities of the relevant RSPO Standard for Sustainable Oil Palm Production by group members.	Yes	Additional assessment when the group receives information from stakeholder on plots owned by group members is indicated in the sustainable manual. Not only result from complaint raised by others but also result from openly communication will be taken into account for onsite investigation at plot owned by group members. Up to now, there is no complaint raised by stakeholder. So, there is no additional assessment conducted so far
	2.2.3	Non-conformities identified by the Group Manager shall be resolved internally according to a documented system of applying corrective action requests (CARs). See 2.1.4.3.	Yes	Non-conformity found at plot owned by Jamnean and Komkrit on 5.7.2016 could be close on 10.7.2016. This timeframe for closure of the non-conformity is consistent with the requirement of the group indicating that 2 month will be given for closing non-compliance with RSPO requirements and group requirements



3. Chain of Custody

The Group Manager shall have a system in place to enable the trading of RSPO certified Fresh Fruit Bunches (FFB) produced from the group.

Requirements		Compliance (Yes/No)	Findings
3.1	The group manager shall document and implement a system for the tracking and tracing of FFB produced by the group members, and intended to be sold as RSPO certified FFB.	Yes	All group members have sold their FFB without RSPO claim to the mill. However, the system for the tracking and tracing FFB producer/seller whether it was produced by the group members was done under collaboration with the partnering mill. The group has shared the list of group members to the partnering mill namely United Palm Oil Public Company Limited (UPOIC). This is one of information beside ID card, which is given to all group members for trading FFB to the mill, to make distinguish between FFB supplied by group member and independent growers. Once mill received the FFB produced by group member, the weighting system will automatically display name of FFB producer in weighting bill and used for tracking the tracing in real time basis
3.2	There shall be a collective group procedure for the sale of all certified FFB originating from the plantations of group members that is agreed by the group members and the Group Manager and is designed to ensure that non-certified FFB are not sold as RSPO certified FFB. This shall be contained in any group marketing system that is developed for the group, and shall follow one of the supply chain models as per the RSPO Supply Chain Certification Systemsii, i.e. Identity Preserved, Segregation or Mass Balance.	Yes	All group members have sold their FFB without RSPO claim to the mill. Only trading through GreenPalm is applied
3.3	The group manager shall ensure that all invoices for sales of RSPO certified FFB originating from the group are issued with the required information as per the adopted supply chain model requirements within Annex 6 of the RSPO Supply Chain Certification Systems document – November 2009.	Yes	FFB produced by group member is sold by group member individually
3.4	The physical transporting of RSPO certified FFB originating from the plantations of group members shall be done either directly by the group (i.e. through own transportation), or via sub-contracted intermediaries. For intermediaries the requirements as outlined in 3.7 shall also apply.	Yes	Transporting of FFB without RSPO claim was done by the group either through own transportation and hire the outsource



3.5	All sales of FFB originating from the plantations of group members shall be documented. This shall include:	3.5.1	Invoices and receipts (purchase and sale).	Yes	As sales of FFB to the mill is done by group member individually without RSPO claim; however, only weighing bill or receipt was documented and available
		3.5.2	Information on transport.	Yes	Car registration number is indicated in weighing bill
		3.5.3	The relevant group members' group identification number.	N/A	Group identification number is not necessary when trading of FFB without RSPO claim to mills
		3.5.4	Description of the product sold (i.e. RSPO certified or not), product volume and destination.	Yes	No RSPO certified was indicated
3.6	The Group Manager shall maintain copies of all relevant documentation and records of group product transactions for a period of 5 years.			Yes	Weighting bill in the last two years are available when requested by auditor
3.7	If an intermediary exists in the supply chain from the group to the mill that wants to be included within the group certification control rather than obtain their own supply chain certification, the intermediary shall be identified by the Group Manager. The Group Manager shall have a contract with the intermediary to fulfill the RSPO Standard for Group Certification and agree to be assessed on an annual basis by the Group Manager as well as in certification assessments. It is the responsibility of the Group Manager to ensure that the intermediary shall comply with the following conditions:	3.7.1	There shall be a contract between the intermediary and the Group Manager.	N/A	Since group has chosen to implement and sell RSPO credit through GreenPalm (will be replaced by RSPO PalmTrace). The contracts between group and intermediary (Sombat Sangyapan and Sopa Kongpol) signed on 24.9.2013 are still available
		3.7.2	The intermediary shall have complete purchasing and selling records.	Yes	The weighting record from selling of FFB kept by both parties (group member and intermediary). However, FFB sold to intermediary are not claim as RSPO certified
		3.7.3	The intermediary shall have RSPO supply chain systems in place to separate certified from non-certified materials through any of the RSPO supply chain options (i.e. Identity Preserved, Segregation or Mass Balance).	Yes	Even though intermediary employed by group member, but there are no claims as those FFB being RSPO certified



Assessment finding for RSPO P&C

The summary of the assessment can be seen below, where “Findings/Comments” column reflects the findings in accordance with each criteria and indicator or evidences, and “compliance” column reflects the conformity with the RSPO NI of Thailand.

FINDINGS/COMMENTS	COMPLIANCE
Principle 1: Commitment to transparency	
Criterion 1.1 (C.1.1)	
Growers and millers provide adequate information to relevant stakeholders on environmental, social and legal issues relevant to RSPO Criteria, in appropriate languages and forms to allow for effective participation in decision making.	
<p>Relevant information related to environmental, social and legal issues of each group member were kept at the administration office of the group which is located at the partnering mill (Krabinoi mill of UPOIC). As the permanent staff who was hired by the group is always in the office, she can response the request for information (if any) immediately. Moreover, the relevant information especially copied of land deeds and agreement signed by the group and group members are also kept at each plot owned by group member. Even though sstakeholders have been offered the chance to visit group administration office and plantation owned by each formal member in order to get information on environmental, social and legal issues caused by formal members, currently, it was found that there are no requests for information from the stakeholders at the group administration office and member’s plot. However, the request form (Kor Yor Por-001) designed to record the request by the stakeholders is ready when the group has to deal with the requests. In the case of request occurred at the member’s plot, the member will use the farm record book given by the group to record the requests from stakeholder (if any). Then, records of such requests at member’s plot will be collected by farm advisor so that all records can be maintained and kept for five year at the administration office as per retention time stated in the internal document control. During the public consultation held at the administration office on day 2 of the audit (26 October 2016), it was also confirmed that there was no request for information related to environmental, social and legal issues (Indicator 1.1.1)</p>	Yes
Criterion 1.2 (C.1.2)	
Management documents are publicly available, except where these are prevented by commercial confidentiality or where disclosure of information would result in negative environmental or social outcomes	
<p>According to the requirement of indicator 1.2.1, it was shown that copies of the management documents such as summary of land title or land-use rights and agreement between group manager and members including application form of the members which are required by RSPO standard were available and ready for transparency purpose on request at the central administration office and plots owned by all group members who were selected for the assessment. Not only documents of land use right of each group member but other documents, but also group policies, copies of relevant government laws, internal audit document, registration of the group with the local authority, safety and health management plan, details of complaints and/or grievances, negotiation procedure, simplified budget for the group, palm oil best practice, and training records, were also publicly available at the group administration office and plots owned by group members (Indicator 1.2.1).</p>	Yes
Principle 2: Compliance with applicable laws and regulations	
Criterion 2.1 (C.2.1)	
There is compliance with all applicable local, national and ratified international laws and regulations	



<p>Group hold the license no. 8-81-08-08/2-0010 that was regulated by Nue Khlong Agricultural Office on 29 December 2015. This group license is required to update annually according to the number of group members that can either be increased or decreased every year. This implementation was done in according to the notification of the Department of Agriculture. Group manager and group members were asked by auditors to evaluate their knowledge regarding legal requirement related to their operation. Latest list of relevant and significant laws and regulations was developed and listed in the Sustainability Manual Kor Yor Por-001 such as Hazardous Substance Act, Regulations Governing Land Tenure or Land Right, Agricultural Land Reform Act, and guideline of best practice for Palm Oil Plantation regulated by National Bureau of Agricultural Community and Food Standards. The list of relevant laws and regulations was communicated and distributed to each group member especially new group members. Group members who were selected for the assessment could show the list of relevant laws and regulations when requested. Key laws and regulations reviewed and monitored for both group and selected group members during the audit are, for example, as follows (Indicator 2.1.1).</p> <ul style="list-style-type: none"> • Estates owned by smallholders used only chemicals that have been legally registered with Department of Agriculture. For instance, DuPont (Glyphosate) with registration number of R1/2554 (2011) is one of legal pesticides that has been reviewed during the assessment. From the total sample number selected for the assessment, only Mr Witoon Srisawat recently applied pesticide (Glyphosate) in his planation on 5 April 2016. Meanwhile, the rest of group members have stopped using pesticide in the palm oil plantation for years. • Inspection of payment to the contractors recorded by selected smallholders showed that all contractors were paid in accordance with the respective award rates. Comparison between the amounts paid for particular job with legal minimum wage required by Ministry of Labour of 300 Baht/day, showed that the contractor has always received the benefit per day higher than the minimum wage. Average income of the contractor was 600 Baht/day. • The presence of threatened and endangered species were checked in each plot of group members and adjacent areas to ensure that they will not be affected from farm operation 	<p>Yes</p>
<p>Criterion 2.2 (C.2.2) The right to use the land is demonstrated, and is not legitimately contested by local people who can demonstrate that they have legal, customary or user rights.</p>	
<p>Most of the formal members have the full right to use the land for oil palm cultivation because all square meters of land have been alienated with many land deed, land licenses and land permits from the relevant governmental authorities concerned such as Department of Land, Agricultural Land Reform Office of Ministry of Agriculture and Cooperatives. Beside of land deed hold by formal members, the name of group members are appeared on the land deed, land license and land permits. Moreover, these land deed and permits are indicated with the map showing legal land ownership or land use right of the member. Therefore, there are no legitimate claims and contests by local communities at any visited plots. The presence of land conflict was verified during stakeholder consultation meeting held at group administration office on October 26 October 2016. Besides, stakeholders who live near the plot owned by selected group members were visited and interviewed to investigate the presence of land conflict or use of land that is legitimately contested by local people. Based on the results of the public consultation meeting and in-depth interview with stakeholders, it was confirmed that there are currently no disputes (Indicator 2.2.1).</p>	<p>Yes</p>
<p>Criterion 2.3 (C.2.3) Use of the land for oil palm does not diminish the legal, customary or user rights of other users without their free, prior and informed consent.</p>	
<p>Investigation of land rights issues to ensure that use of the land for palm oil plantation of all group members does not diminish the customary or user right of other users was done through in-depth interview stakeholders during the public consultation meeting held</p>	<p>Yes</p>



<p>at Group Administration Office and also during the visiting to interview with stakeholder who lives nearby the plots owned by group members. Moreover, complaint records were also checked to verify whether there are any complaints that diminish the customer rights of stakeholders. It was confirmed that there is no problem about the legal rights and customer rights of other users. It is because of all square meters of land are owned by the group members and bound with land deeds, license and land utilization certificates. In addition, inspection on the layout of each plot owned by selected group members found that it was consistent with legal boundary delineated in land deed and license (Indicator 2.3.1)</p>	
<p>Principle 3: Commitment to long-term economic and financial viability</p>	
<p>Criterion 3.1 (C.3.1) There is an implemented management plan that aims to achieve long-term economic and financial viability</p>	
<p>The annual budgetary plan developed by the group was discussed in a transparent and consultative process among members though the annual group meeting held on 26 December 2015. Even though it is difficult to invite all group members to attend the meeting on the proposed date, 170 members excluding the new group members were attended the meeting on 26 December 2015. All income of the group used to develop and integrate in the annual budgetary plan is from the selling certified products in GreenPalm (hereafter, it is now replaced by PalmTrace). While costs related to group operation consists of cost for hiring the permanent staff that takes care about the database of the group, cost for internal audit, cost for maintaining the system, cost for certification and etc. Moreover, group recently purchased injection molding machines for the purpose of replanting and fertilizer mixing machines. These machines are available to support the group members who want to replant and need to mix the fertilizer in accordance with the suggestion indicated in the soil nutrient analysis reports. Moreover, individual members are encouraged to have their own annual budgetary plan which covers their palm oil farming activities. Based on the different on the education level and other, it will be impossible to let all group members have their own budgetary plan. However, some group members who visited during the assessment could establish the annual budgetary plan e.g. Mr Amporn and Mrs Pikul (Indicator 3.1.1).</p> <p>With regard to replanting program, group manager and farm advisor will be informed by the individual member whether replanting program is still active. This plan is subject to the capability of investment or fund accessibility because its concern costs for land clearance using external excavators and premium grade of species of palm oil and number of palm tree. Even though group purchased the injection molding machines for facilitating the group member for replanting process, there are many costs associated with the replanting activities. However, the group manager and group management committee aware that group members need to consider replanting plan in term of budgetary assistance and plan to assist the group members to go through the replanting smoothly. (Indicator 3.1.2)</p>	<p>Yes</p>
<p>Principle 4: Use of appropriate best practices by growers and millers</p>	
<p>Criterion 4.1 (C.4.1) Operating procedures are appropriately documented, consistently implemented and monitored</p>	
<p>Group and smallholder group members were given external support and assistance by GIZ, Office of Agricultural Economics (OAE) and local university namely Prince of Songkhla University since 2011-2012 in developing their own agriculture manual covering palm oil management and sustainability manual, guideline, handbook covering palm oil management and best practice, and safe working instruction for all type of work. The version of relevant documents established by the group and supported by the external supporters are remain unchanged and are still used to distribute to each group members especially new group members (Mr Amporn, Mr Witoon, Mrs Pikul, and Mr Chamroon) who were selected for the assessment. It is the responsibility of the group manager and ICS administrator to ensure that all group members have a copy of these documents. Checking the availability of the documents and records were done by group</p>	<p>Yes</p>



<p>Committees who were assigned by the group manager to assist in monitoring and visiting the group members. The relevant documents and record books were given to new group member after having completed signing the agreement with group manager. The record book designed by the group will be re-given on yearly basis to existing group members (Indicator 4.1.1). Based on the written procedures and work instructions especially how to implement as required by established management practices e.g. which agrochemical are allowed to use and how to spray the chemical in the safety manner, their implementation observed during the field inspection met the requirement of the group and standard (Indicator 4.1.2).</p>	
<p>Criterion 4.2 (C.4.2) Practices maintain soil fertility at, or where possible improve soil fertility to, a level that ensures optimal and sustained yield</p>	
<p>Group members applied different types of fertilizer depending on the purpose of the use and technical advices by experienced group members. Currently, no members who were selected for the assessment applied soil nutrient analysis from foliar and/or soil sample because they have to pay this analysis fee which is costly. However, experienced group members and group manager will give technical advice which fertilizer formula should be applied. At the times of 4th surveillance assessment, there were many formulas of fertilizer used in the plots of members such as 15-15-15, 23-17-11, 14-10-27, 11-5-30, 21-0-0, 0-0-60, and 18-46-0, recorded by sampled group members. Latest record of fertilizer application in the plot of Mr Sophon, Mr Chun and Mr Witoon; for example, showed that formulas of fertilizer as above-mentioned were applied on 6.10.2016, 20-21.7.2016 and 20.7.2016 respectively. Normally, each group member applied fertilizer in their plots 2-3 times a year. The fertilizer is mainly applied by spraying carried out by workers hired by the member directly (Indicator 4.2.1).</p> <p>Majority of members were not be able to apply other techniques for soil fertility improvement such as application of EFB and POME because it requires high costs from transportation of POME and EFB. However, some group members (Mrs Raenoo for example) could apply EFB and ash in their own plots because they have their own transport trucks. To promote soil fertility maintenance, all group members used frond lining technique instead.</p> <p>All the group members that were assessed have maintained last year FFB production record through keeping the weighting bill and recording its weight in the record book. The record book and weighting bill of FFB production were used to check the FFB production last year with data from the group administration office. Result showed that it was consistent. Another technique is to ask weighting record of FFB from the partnering mill. Group manager and group committees are able to ask and download the weighting record of FFB supplied by group members at the Krabinoi mill owned by United Palm Oil Public Company Limited anytime. These FFB records of all members are also maintained and updated in the ICS documentation of the group (Indicator 4.2.2).</p>	<p>Yes</p>
<p>Criterion 4.3 (C.4.3) Practices to minimize and control erosion and degradation of soils</p>	
<p>At the time of surveillance assessment, no group members did replanting. There were also no immature palm oil planted with the bare ground which could cause soil erosion observed from all site visited. To prevent erosion and degradation of soil, majority of the members applied frond lining and hired subcontractors for grass cutting as it minimize the speed of the running surface water. As the audit is done during the rainy season, all visited farmer stopped weeding the soft grass and soft weeds to not only to minimize erosion but also saving the cost to hire subcontractor because soft grass and soft weeds can grow very fast during rainy season. (Indicator 4.3.1)</p> <p>Topography map with contour lines downloaded from the application was used to check the risk erosion area during the onsite inspection. Onsite inspection at plots owned by sample members confirmed that there are no steep slope areas where are required the terrace and other mitigation measures to prevent the erosion (Indicator 4.3.2)</p>	<p>Yes</p>



Criterion 4.4 (C.4.4) Practices to maintain the quality and availability of surface and ground water	
<p>During field visit, it is noted that all selected group member's plots are away from water course. To avoid the contamination of water resources from run-off of soil, nutrients or pesticide, however, the group has established instruction for those members who are located very close to water course and/or irrigation canal in having buffer zones along these waterways with natural vegetation to prevent the erosion. No spray zone of pesticide has been created along the river to prevent contamination of agrochemical into the river. Group member are also provided with knowledge on maintaining the quality and availability of water resource especially maintaining buffer zones by avoiding spraying (Indicator 4.4.1)</p>	Yes
Criterion 4.5 (C.4.5) Pests, diseases, weeds and invasive introduced species are effectively managed using appropriate Integrated Pest Management Techniques	
<p>IPM is documented in the sustainable manual of the group. This manual describes all the IPM techniques and methods to be used by the group members in managing oil palm pest and disease. For instance, planting beneficial plants is one of the IPM techniques. All members who were visited during the 4th surveillance assessment have planted sage rose (<i>Turnera ulmifolia</i> L.) even though the number of sage rose planted by each selected group member are not much (Indicator 4.5.1). Most of group members visited planted sage rose in one point of the palm oil planted area because this beneficial host plant required light from the sun adequately. This beneficial host plant is supported by the group for free of charge. Moreover, each group members confirmed that they have never been affected by the pests especially beetle during the past year. To support the IPM program, group manager and farm advisor are responsible in providing knowledge to group members to understand the IPM techniques such as biological control for pest. During the group meeting on 26 December 2015, the training on IPM techniques were given to group members who attended the meeting.</p>	Yes
Criterion 4.6 (C.4.6) Pesticides are used in ways that do not endanger health or the environment	
<p>From the field assessment, only one group member (Mr Witoon Srisawat) applied glyphosate to control the weed on 5 April 2016. The rest of group members have stopped applying agrochemical for years. For pesticide application, spraying of agrochemical was carried out by the group member (Mr Witoon). The personal protective equipment used for spraying agrochemical were available to check during the assessment even though there was no spraying of agrochemical during the onsite inspection (Indicator 4.6.1)</p> <p>A farm record book is prepared and distributed by the group for recording agrochemical used for the targeted weeds with date of application, type of pesticide and herbicide, quantity and name of sprayer. For example, inspection of the record book of Mr Witoon showed that total 8 l of glyphosate or Dupont was applied on 5 April 2016. While the record book of the other visited group members showed that agrochemical has never been used more than 2 years (Indicator 4.6.2).</p> <p>Mr Witoon do not have storage of chemical. He purchased 2 bottoms of glyphosate which were sufficient volume to be used for spraying only. For disposal of empty container after use, it was rinsed for 3 times before disposal in the landfill (Indicator 4.6.3).</p>	Yes
Criterion 4.7 (C.4.7) An occupational health and safety plan is documented, effectively communicated and implemented.	
<p>The group has an occupational health and safety policy described in the sustainability manual. This manual as also contains a guideline of implementation to meet with</p>	Yes



<p>occupational health and safety policy. A copy of manual is distributed to all group members especially new group members. For monitoring the implementation according to the written procedure and policy on occupational health and safety, group committees and internal auditors will take responsibility to monitor the implementation by using regular visits and internal audit. Afterward, it is responsibility of group members to encourage the hired subcontractors for occupational health and safety policy and instructions (Indicator 4.7.1).</p> <p>Record book given by the group contains the relevant information to record the accident related to work. Moreover, guidelines on accident and emergency procedures are available and used to brief to the hired subcontractors. Subcontractors were encouraged by group members to inform any accidents related to work. Then, the record book will be used to record the accident. During the assessment, it is noted that there was no either major or minor accident. This was confirmed during the public consultation meeting involving with the subcontractors (Indicator 4.7.2)</p>	
<p>Criterion 4.8 (C.4.8) All staff, workers, smallholders and contractors are appropriately trained.</p>	
<p>Annual training program is developed by the group manager to cover all group members. Training includes awareness on relevant RSPO standard, legal requirements, SOP, soil and water management, fertilizer application, IPM, agrochemical use, OSH, farm record keeping, Good Agriculture Practice and functions of group members and their responsibly to maintain the implementation in alignment with requirement of the standard. For example, sample member were trained by Dr Dr Benchamaporn from Prince of Songkhla University on the topic of sustainable palm oil plantation, fertilizer application and IPM. Latest training given to all group members was conducted on 26 December 2015. Moreover, group manager always created opportunity for all group members to visit farm where best practices are successfully applied. Latest, group took group members to visit the palm oil plot owned by national outstanding farmer in Suratthani province on 23 February 2016. Even though these activities are free of charge, but it is optional for the group members who are interested. For the training provided to subcontractor, subcontractors who hire by group members were trained by group manager and group committees on 24 April 2016. The training subject was focused on the relevant practice of the subcontractor especially fertilizer application and harvesting (Indicator 4.8.1).</p>	<p style="text-align: center;">Yes</p>
<p>Principle 5: Environmental responsibility and conservation of natural resources and biodiversity</p>	
<p>Criterion 5.1 (C.5.1) Aspects of plantation and mill management, including replanting, that have environmental impacts are identified, and plans to mitigate the negative impacts and promote the positive ones are made, implemented and monitored, to demonstrate continual improvement.</p>	
<p>External consultant who is lecturer from Prince of Songkhla University assisted the group in conducting the EIA, SIA and HCV assessment. Guideline of an initial environmental examination (IEE) from Office of Environmental Policy and Planning was adopted for assessment. The initial environmental examination was done for all planted area owned by all group members. IEE report can be considered as the generic assessment result on environmental impacts of the group. However, group also carried out an environmental impact assessment for each plot owned by group members and also new group members. The methodology for environment impact assessment can be divided into two phases. Firstly, environment impacts were assessed by group manager and group committee using simple questions, in particular, before accepting members. Secondly, onsite assessment of environmental impacts at the plot owned by new group member is carried out. Impact on environment from relevant activities were investigated by group committee during both phases such as use of fire for land clearance for replanting, waste management and evidence of soil erosion. Main concern from this assessment is to soil erosion of planted areas close to river bodies and/or located on steep slope. Even though the environmental impact assessment on individual plot and initial environmental examination were carried out, stakeholder especially community leaders were invited to</p>	<p style="text-align: center;">Yes</p>



<p>verify the reports of assessment. Results from verification by community leaders during the community leader meeting on September 6th, 2016 confirmed that no negative impact on environment caused by farm operation is present.</p> <p>To ensure whether the negative impacts caused by member's operation are still present, the auditor team inspected the risk area where it is likely to be affected by group member's operation especially at plots located nearby the water bodies and slope lands. Results from onsite inspection confirmed that there is no negative impact on environment caused by farm operation. Moreover, the topic of impact on environment was discussed with stakeholders during the public consultation meeting. Based on in-depth interview during the public consultation meeting held at the administration office on 26 October 2016, stakeholders and environment have never been affected by group operation (Indicator 5.1.1).</p>	
<p>Criterion 5.2 (C.5.2) The status of rare, threatened or endangered species and other High Conservation Value habitats, if any, that exist in the plantation or that could be affected by plantation or mill management, shall be identified and operations managed to best ensure that they are maintained and/or enhanced.</p>	
<p>External consultant who is lecturer from Prince of Songkhla University as above mentioned in Indicator 5.1 has also been involved in establishing the method and procedure for assessing the presence of HCV in the planted area. Simplified checklist for HCV assessment was also established for further use by the group to assess the presence of HCV habitat within and adjacent area with the group member plots. As most plots owned by group members were planted more than a decade ago; therefore, there is no record of the presence of the HCV in the planted area and adjacent area. Not only HCV but also RTE were not identified within and adjacent boundary areas. Based on the result of HCV assessment report conducted on 5 September 2016 for especially new group members, showed that there is not RTE identified in the planted area of each group member. Then, the result from HCV assessment was verified and confirmed by the community leaders during the meeting on 6 September 2016. Result confirmed that there are no problem caused by plot located nearby the canal and river and no listed RTE species and HCV areas within the planted area of all group members (Indicator 5.2.1)</p>	<p>Yes</p>
<p>Criterion 5.3 (C.5.3) Waste is reduced, recycled, re-used and disposed of in an environmentally and socially responsible manner</p>	
<p>Waste products mainly originate from empty agrochemical containers and fertilizer bags. As most of group members apply agrochemical and fertilizer 2-3 times a year, those wastes are limited. Even though almost group members are not the person who applies fertilizer and agrochemicals, but the awareness to dispose those kinds of wastes was informed and communicated to the subcontractors. Empty containers are cleaned using triple rinse method before disposal in the landfill. The rest of fertilizer bags are washed and reused for loose fruit collection (Indicator 5.3.1)</p>	<p>Yes</p>
<p>Criterion 5.4 (C.5.4) Efficiency of fossil fuel use and the use of renewable energy is optimised.</p>	
<p>This criterion is not applicable to group smallholders.</p>	<p>N/A</p>
<p>Criterion 5.5 Use of fire for preparing land or replanting is avoided, except in specific situations as identified in the ASEAN guidelines or other regional best practice.</p>	
<p>Group members are aware that they cannot use fire for land preparation during replanting. Waste has never been burned on site. Zero burning techniques have been explained to group members through internal training by lecturer who is external consultant from Prince of Songkla University. During field visit, there is no evidence of any</p>	<p>Yes</p>



<p>kind of burning sign notices at the sampled group members. Interview with stakeholder during public consultation meeting on 26 October 2016 confirmed that fire has never been used in this region (Indicator 5.5.1)</p>	
<p>Criterion 5.6 Plans to reduce pollution and emissions, including greenhouse gases, are developed, implemented and monitored.</p>	
<p>This criterion is not applicable to group smallholders.</p>	<p>N/A</p>
<p>Principle 6: Responsibility consideration of employees and of individuals and communities affected by growers and millers</p>	
<p>Criterion 6.1 Aspects of plantation and mill management that have social impacts, including replanting, are identified in a participatory way, and plans to mitigate the negative impacts and promote the positive ones are made, implemented and monitored, to demonstrate continual improvement.</p>	
<p>Questionnaire survey was used to evaluate stakeholder's opinion on whether they have been affected by group member's operation. Several questions used to assess the social impacts are developed by external consultant who is lecturer from Prince of Songkhla University. The SIA was preliminary assessed by the group committee first. Then, its result was confirmed by the community leaders who are list as stakeholder of the group. Results from SIA and list of group members were led into the community leader meeting held at Khaopanom district office on 6 September 2016, in order to ask the community leaders who attended the meeting to confirm whether their villagers have been affected by group member's operation. Result showed that there is no negative impact caused by group operation. On the other hand, it is also confirmed that the stakeholders have not been affected by group member operation. Conversely, stakeholders are free to give their concerns anytime. It is the responsibility of group manager to handle these concerns from the stakeholders. During the assessment by external auditor; however, the public consultation meeting was held to verify the social impacts. Based on the result of interview during the public consultation, it was confirmed that the stakeholders have not been affected by group member operation (Indicator 6.1.1)</p>	<p>Yes</p>
<p>Criterion 6.2 There are open and transparent methods for communication and consultation between growers and/or millers, local communities and other affected or interested parties</p>	
<p>Procedure on open and transparent system of consultation and communication with local and external stakeholders is available in the sustainable manual. Based on the procedure, the group planned to have a public consultation meeting at least once a year. Latest communication between the group and stakeholders especially community leader was conducted during the community leader meeting held on Khaopanom District Office on 6 September 2016 (Indicator 6.2.1).</p> <p>Records of communications and consultations between the group and stakeholder especially latest meeting on 6 September 2016 are available at the group administration office. Stakeholder list especially name of the community leader in each sub-district are available and up-to-date in order to invite those stakeholders to update any concern on the member's operation. Latest public consultation meeting was carried out during the surveillance assessment on the second day of the assessment (26 October 2016). In addition, record form of request is available, but there is no request by stakeholder either at the group administration office or group member's plot. In case of any concerned raised by stakeholders, group manager will take responsibility for solving these concerns (if any) (Indicator 6.2.2).</p>	<p>Yes</p>
<p>Criterion 6.3 There is a mutually agreed and documented system for dealing with complaints and grievances, which is implemented and accepted by all affected parties.</p>	



<p>Complaints and grievance procedure are available in the sustainability manual. Group manager and members awareness on the procedure were verified by interviews by the auditor teams. Suggestion/complaint box is placed at the group administration office for the members and stakeholders to send their grievances (if any). When the complaints and grievance were raised, it is responsibility of group manager and group committee to handle and resolve complaints. These complaints and grievance are required to resolve within 7 days. Based on the latest minute of public consultation meeting held at group administration office on 26 October 2016, it confirmed that there was no evidence of any dispute and complaints raised by stakeholder, community leader, governmental officers, and local communities even though they have known the right to give the complaints and grievances (Indicator 6.3.1).</p> <p>Due to no complaint and grievance, it is not necessary to show dispute resolution process and outcome (Indicator 6.3.2)</p>	<p>Yes</p>
<p>Criterion 6.4 Any negotiations concerning compensation for loss of legal, customary or user rights are dealt with through a documented system that enables indigenous peoples, local communities and other stakeholders to express their views through their own representative institutions.</p>	
<p>Group manager and group members are aware of procedure described in the sustainability manual for negotiation of any loss of legal and customary right. However, all group members including new group members hold land deeds and licenses for all land used for the oil palm cultivation, therefore, the customary right does not apply. However, the audit team studied the whole compensation mechanism indicated in the sustainability manual when it deems necessary. It was found that it is satisfactory and thus far, no legal action has been taken against the group member by any party. The compensation will be made according to the decision of the independent arbitrator or court of justice (if any). Moreover, based on the results of public consultation meeting as well as interviewing with local communities during the public consultation meeting confirmed that there is no current claim on customary right over land (Indicator 6.4.1 and 6.4.2)</p>	<p>Yes</p>
<p>Criterion 6.5 Pay and conditions for employees and for employees of contractors always meet at least legal or industry minimum standards and are sufficient to provide decent living wages.</p>	
<p>There are no permanent workers hired by group members for oil palm operation. Subcontractors are hired for temporarily season for harvesting, transporting of FFB from the estate to mill, weeding, and fertilizer application. Rate of payment is determined by task. For instance, harvesting and transporting of FFB rate range from 300-700 Baht/ton, weeding rate 10-15 Baht/oil palm tree, frond cutting rate 16-18 Baht/oil palm tree, fertilizer application 40 Baht/bag, and spraying of agrochemical 80 Baht/container. Payment rates are agreed upon verbally but also registered in the record book. Every payment is also signed off in the record book. For example, Pisarn who was hired by Mr Sophon for harvesting was paid 1350 Baht on 21 October 2016 (harvesting rate is equal to 300 Baht/ton). There is no legal minimum wage for agriculture workers hired on daily basis. However, the minimum legal wage for industrial workers at 300 Baht/day is adopted by all group members to ensure that their subcontractor should receive a salary higher than minimum wage. Daily benefits obtained by subcontractors are always higher than 300 Baht. Wage payment for each type of palm oil operation is recorded and documented in the record book. Signature of the hired subcontractor as benefit receiver is appeared on the record book (Indicator 6.5.1)</p>	<p>Yes</p>
<p>Criterion 6.6 The employer respects the right of all personnel to form and join trade unions of their choice and to bargain collectively. Where the right to freedom of association and collective bargaining are restricted under law, the employer facilitates parallel means of independent and free association and bargaining for all such personnel.</p>	



This criterion is not applicable to group smallholders.	N/A
Criterion 6.7	
Children are not employed or exploited.	
Group members are provided with training and briefing to understand the requirements of national labour law, Ministerial Order on Agriculture Labour Protection and RSPO requirement related to child labour. Group manager and group committee are responsible to ensure that group members are not employing any child labour either direct or indirect employment. Moreover, group members are also responsible to investigate whether subcontractor has brought children to work at their own estate. ID card of all members employed to operate in each plot is required as one of the group's procedure. However, all group members who were randomly selected for the assessment employed the subcontractors, however, there is no evidence and monitoring system to show children are not employed and exploited. Therefore, major non-conformity was raised against Indicator 6.71.	NC 1 of 1
Criterion 6.8	
Any form of discrimination based on race, caste, national origin, religion, disability, gender, sexual orientation, union membership, political affiliation, or age, is prohibited.	
No evidence of discrimination among workers including between male and female workers employed by the group members was observed during the site visiting. Service contract between group members and subcontractor showed that it is in compliance with the equal opportunities policy stated in the sustainability manual. Moreover, the equal opportunities policy stated by the group was confirmed with representatives of subcontract workers during the public consultation meeting held at administration office on 26 October 2016 (Indicator 6.8.1).	Yes
Criterion 6.9	
There is no harassment or abuse in the work place, and reproductive rights are protected.	
Policy on preventing sexual harassment and violence against women and protection is documented as one of the group policy in the sustainability manual. The grievance mechanism to address sexual harassment issues is similar to the complaint procedure as highlighted in indicator 6.3 above. Interview with worker, female family members and external stakeholder on 26 October 2016 revealed that is no kind of harassment took place (Indicator 6.9.1).	Yes
Criterion 6.10	
Growers and millers deal fairly and transparently with smallholders and other local businesses.	
The FFB pricing mechanism is provided by the partnering mill's extension officer to the group manager and this information is available to all members. Normally, purchaser of the partnering mill (Krabinoi mill owned by UPOIC) is responsible to call to all group members to inform them off FFB gate price. However, members have freedom to choose the mill to sell their FFB product. Majority of group members decided to sell their FFB to Krabinoi mill owned by UPOIC where is also address of the group administration office. All FFB sold by group members to Krabinoi mill was not bound with RSPO claim because the credit was used through GreenPalm (RSPO PalmTrace). According to the group manager, group has no plan to make group sales especially physical trading. FFB to be sold by group members individually in 2017 will not claim as RSPO certified FFB because the credit of certified FFB is intended to use for RSPO PalmTrace purpose (Indicator 6.10.1 and 6.10.2).	Yes
Criterion 6.11	
Growers and millers contribute to local sustainable development where appropriate.	
This criterion is not applicable to group smallholders.	N/A



Principle 7: Responsible development of new plantings	
All criterion of principle 7 is not applicable to this assessment because there is no new planting area since 2005 until the present.	N/A
Principle 8: Commitment to continual improvement in key areas of activity	
Criterion 8.1	
Growers and mills regularly monitor and review their activities, and develop and implement action plans that allow demonstrable continuous improvement in key operations.	
<p>The continuous improvement plan was established by the group management committee under the participatory of group members and under technical advisory from the consultant from Prince of Songkhla University during the meeting on 26 December 2016. This plan includes Plan for training year 2017 covering sustainable palm oil management, HCV, palm oil farming practices, soil nutrient enrichment techniques for fertilizer application, and visiting to the outstanding plot owned by the national outstanding farmer. Here below are quality objectives of the group:</p> <ul style="list-style-type: none"> - Chemical Pesticide application : 20% reduction for especially plots that are still applied pesticides - Enhancement and extension planting area of beneficial plant: area for planting of beneficial host plant must be increased annually - Increasing number of local vegetation along waterway : do not deterioration from the past year - Social responsibility and environmental monitoring : maintain annual meeting with the community leaders <p>The effectiveness of continuous improvement plan was monitored every 6 months and its results were recorded and kept at the group administration office (Indicator 8.1.1).</p>	Yes



3.2 Identified non-conformances and noteworthy Positive Components

The verification comments for the non-conformities raised in the previous assessment can be seen in **Appendix 5**.

3.3 Issues raised by stakeholders

Stakeholder meeting was held on October 26th, 2016 at group administration office which is supported by partnering mill. Subject discussed during the stakeholder meeting were:

- Do group of smallholders hold regular meetings on community development?
- Do group of smallholders respond well to complaints in respect of RSPO P&C implementation?
- Is there a clear grievance and complaints procedure in the group?
- Are there any complaints on land acquired by estates owned by group members for planting oil palm?
- Is there any environment impact caused by the operations of group members?
- Are there any conflicts not yet solved satisfactorily?
- Are the workers paid in accordance with government regulations?
- Are there any flora and fauna found in estates or even nearby estates?

Overall result from public consultation meeting and in-depth interview with stakeholders confirmed that there was no complaint raised by stakeholders during the public consultation meeting. Moreover, stakeholder confirmed that there were no problems on land conflicts, environmental problems and social impacts caused by plantation operations.

Summary of comments received during stakeholder consultation

Organizations	Feedback/comment received	Verification and follow-up by Bureau Veritas
Government agencies	No comments	NA
Local communities	No comments	NA
Contractors	No comments	NA
Suppliers	No comments	NA
Etc.	No comments	NA



4.0 Certified organisation's acknowledgement of internal responsibility

4.1 Assessment conclusion and recommendation

Based on the evidence gathered during the on-site visits it can be concluded that UPOIC Nuekhlong-Khaophanom has conformed to the requirements of the against RSPO Certification Systems, RSPO Standard for Group Certification (amendment April 2013) and RSPO P&C for Independent Smallholder under Group Certification (TH-NI 2012).

Therefore, the assessment team recommends UPOIC Nuekhlong-Khaophanom to be certified/continue to be certified for RSPO Standard for Group Certification.

4.2 Formal sign-off of assessment findings

I, the undersigned, representing UPOIC Nuekhlong-Khaophanom acknowledge and confirm the contents of the assessment report and findings of the assessment.

Mr. Surasit Pisetsit
Group Manager

Date: 28 December 2016

I, the undersigned on behalf of Bureau Veritas Certification Hong Kong, confirm the contents of the assessment report and findings of the assessment.

Dr. Chaiyaporn Seekao
Lead Assessor

Date: 28 December 2016

List of group members

Group ID no	Name of group member	Plot	Address	Planted area (ha)
03-01-01A	Mr.Surasit Pisatesin	1	18 Moo 2, Khao Phanom Sub-District, Khao Phanom District, Krabi Province	3.24
03-01-01B		2		1.69
03-01-01C		3		0.76
03-01-02A	Mr.Nipon Nukfon	1	182 Moo 4, Khao Phanom Sub-District, Khao Phanom District, Krabi Province	1.72
03-01-02B		2		0.49
03-01-02C		3		1.37
03-01-03A	Mr.Ampol Chookum	1	216 Moo 4, Khao Phanom Sub-District, Khao Phanom District, Krabi Province	4.08
03-01-03B		2		3.45
03-01-03C		3		2.27
03-01-04A	Mrs.Ampa Kongpat	1	29 Moo 1, Khao Phanom Sub-District, Khao Phanom District, Krabi Province	3.07
03-01-04B		2		3.08
03-01-07	Mr.Sompas Chuykerd	1	5 Moo 3, Hui-Yoong Sub-District,Nuea Khlong District,Krabi Province	5.53
03-01-08A	Mr.Niyom Sangsrichan	1	180 Moo 3, Hui-Yoong Sub-District,Nuea Khlong District,Krabi Province	8.64
03-01-08B		2		1.95
03-01-08C		3		1.37
03-01-08D		4		1.03
03-01-08E		5		0.65
03-01-08F		6		3.68
03-01-08G		7		1.32
03-01-08H		8		2.20
03-01-09A	Mr.Warin Jaikrieng	1	101 Moo 5, Khokyang Sub-District,Nuea Khlong District,Krabi Province	15.79
03-01-09B		2		5.49
03-01-09C		3		7.34
03-01-09D		4		1.68
03-01-10A	Mrs.Sakuna Chaiphong	1	157 Moo 6, Hui-Yoong Sub-District,Nuea Khlong District,Krabi Province	3.67
03-01-10B		2		0.75
03-01-10C		3		1.12
03-01-11A	Mr.Thavorn Kor-Aor	1	40/1 Moo 6, Khao Phanom Sub-District, Khao Phanom District, Krabi Province	1.60



03-01-11C		2		2.72
03-01-11D		3		1.60
03-01-12A	Mr.Thavorn Kor-Aor	1	118 Moo 6, Hui-Yoong Sub-District,Nuea Khlong District,Krabi Province	3.36
03-01-12B		2		2.83
03-01-12C		3		1.80
03-01-13A	Mrs.Arporn Nukfon	1	72 Moo 4, Hui-Yoong Sub-District,Nuea Khlong District,Krabi Province	8.39
03-01-13B		2		4.00
03-01-13C		3		2.14
03-01-13D		4		1.68
03-01-13E		5		1.41
03-01-13F		6		
03-01-13G		7		1.58
03-01-13H		8		0.74
		9		
03-01-13I		10		4.69
03-01-13J		11		0.89
03-01-15A	Mrs.Rattikarn Payayam	1	37/1 Moo 4,Khlongkhamao Sub-District, Nuea Khlong District,Krabi Province	8.00
03-01-15B		2		8.00
03-01-17A	Mr.Eakawin Taechaworarak	1	100/20 Moo 6, Hui-Yoong Sub-District,Nuea Khlong District,Krabi Province	1.51
03-01-17B		2		2.69
03-01-18A	Mr.Sommaai Dunutsakul	1	11 Moo 1, Hui-Yoong Sub-District,Nuea Khlong District,Krabi Province	4.15
03-01-18B		2		2.59
03-01-19A	Mr.Somchit Yamhom	1	75 Moo 3, Khao Phanom Sub-District, Khao Phanom District, Krabi Province	3.52
03-01-20A	Mr.Winai Yamhom	1	76/1 Moo 4, Khao Phanom Sub-District, Khao Phanom District, Krabi Province	4.80
03-01-20A		2		7.36
03-01-20A		3		1.18
03-01-28A	Mr.Charoen Kulthawee	1	25/3 Moo 6, Khao Phanom Sub-District, Khao Phanom District, Krabi Province	1.98
03-01-28B		2		5.07
03-01-28C		3		3.49
03-01-28D		4		1.61
03-01-28E		5		2.30



03-01-28F		6		3.01
03-01-32A	Mrs.Ornpak Noo-Ngen	1	21/1 Moo 1, Khao Phanom Sub-District, Khao Phanom District, Krabi Province	1.35
03-01-32B		2		1.58
03-01-32C		3		2.83
03-01-33A	Mr.Klong Choptumkij	1	89 Moo 6,Thapprik Sub-District, Mueang District, Krabi Province	3.41
03-01-35A	Mr.Ratthakorn Thepsathien	1	30 Moo 2, Khao Phanom Sub-District, Khao Phanom District, Krabi Province	6.40
03-01-35B		2		2.36
03-01-38A	Mr.Somboon Pisatesilp	1	64/3 Moo 4, Khao Phanom Sub-District, Khao Phanom District, Krabi Province	4.69
03-01-42A	Mrs.Patcharin Somdoug	1	27 Moo 1, Khao Phanom Sub-District, Khao Phanom District, Krabi Province	4.86
03-01-42B		2		1.66
03-01-43A	Mr.Parimas Kraijaras	1	45/3, Sritrung Road, Mueang District, Krabi Province	9.18
03-01-43B		2		3.20
03-01-45A	Mrs.Nanthaluck Buatoom	1	209 Moo 1, Khao Phanom Sub-District, Khao Phanom District, Krabi Province	4.32
03-01-48A	Mr.Weera Noo-Ngen	1	21/2 Moo 1, Khao Phanom Sub-District, Khao Phanom District, Krabi Province	3.88
03-01-48B		2		1.66
03-01-49A	Mrs.Sopha Kongphol	1	58 Moo 6, Hui-Yoong Sub-District,Nuea Khlong District,Krabi Province	0.57
03-01-49B		2		1.95
03-01-49C		3		1.56
03-01-49D		4		1.92
03-01-49E		5		2.70
03-01-50A	Mr.Saeree Thaweekaew	1	59 Moo 6, Khao Phanom Sub-District, Khao Phanom District, Krabi Province	4.82
03-01-50B		2		1.92
03-01-50C		3		1.76
03-01-50D		4		0.00
03-01-51A	Mr.Sophol Chaiphong	1	181 Moo 6, Hui-Yoong Sub-District,Nuea Khlong District,Krabi Province	4.98
03-01-51B		2		2.32
03-01-51C		3		0.00
03-01-51D		4		1.08
03-01-51E		5		4.74

03-01-51F		6		0.67
03-01-56A	Mrs.Monrudee Jongjai	1	175 Moo 6, Hui-Yoong Sub-District,Nuea Khlong District,Krabi Province	3.09
03-01-56B		2		4.72
03-01-56C		3		7.60
03-01-56D		4		0.80
03-01-57A		Mr.Thanawat Chaikao		1
03-01-57B	2		5.99	
03-01-60A	Mrs.Sunantra Limkruayan	1	104 Moo 5, Pakasai Sub-District, Nuea Khlong District,Krabi Province	6.24
03-01-61A	Mr.Suwit Saehao	1	84 Moo 5, Pakasai Sub-District, Nuea Khlong District,Krabi Province	8.00
03-01-62A	Mr.Sawang Rattanaburi	1	65 Moo 4, Hui-Yoong Sub-District,Nuea Khlong District,Krabi Province	1.70
03-01-62B		2		1.07
03-01-62C		3		2.72
03-01-62CD		4		2.26
03-01-62E		5		1.98
03-01-65A	Ms.Kamonwan Chanjaroen	1	250 Moo 5, Hui-Yoong Sub-District,Nuea Khlong District,Krabi Province	2.10
03-01-65B		2		2.69
03-01-65C		3		1.09
03-01-65D		4		0.80
03-01-65E		5		1.94
03-01-66A	Mrs.Chantanee Sriworadech	1	129 Moo 3, Hui-Yoong Sub-District,Nuea Khlong District,Krabi Province	7.84
03-01-66B		2		6.95
03-01-66C		3		2.08
03-01-69A	Mr.Chaew Thaweerat	1	168 Moo 3, Hui-Yoong Sub-District,Nuea Khlong District,Krabi Province	0.99
03-01-69B		2		1.24
03-01-70A	Mr.Wiroj Arsa	1	175 Moo 6, Khokyang Sub-District,Nuea Khlong District,Krabi Province	4.98
03-01-71A	Mrs.Nitchayaporn Chuydoo	1	134 Moo 4, Hui-Yoong Sub-District,Nuea Khlong District,Krabi Province	3.68
03-01-72A	Mrs.Pornpaya Thaweerat	1	21 Moo 4, Hui-Yoong Sub-District,Nuea Khlong District,Krabi Province	2.07
03-01-72B		2		1.64



03-01-72C		3		3.36
03-01-73A	Mr.Somsak Na Thalang	1	489 Moo 4, Hui-Yoong Sub-District,Nuea Khlong District,Krabi Province	9.64
03-01-73B		2		3.20
03-01-73C		3		1.72
03-01-76	Mrs.Noony Kaewlok	1	84 Moo 4, Hui-Yoong Sub-District,Nuea Khlong District,Krabi Province	2.07
03-01-81A	Mr.Anonglak Karnjana	1	224 Moo 6, Amphoe Khao Phanom, Krabi Province	2.13
03-01-81B		2		0.96
03-01-83A	Mr.Anurak Samakkaew	1	10/1 Moo 1, Hui-Yoong Sub-District,Nuea Khlong District,Krabi Province	1.07
03-01-83B		2		2.40
03-01-83C		3		1.19
03-01-83D		4		1.40
03-01-86A	Mrs.Boonkerd Promdoug	1	94 Moo 4, Hui-Yoong Sub-District,Nuea Khlong District,Krabi Province	8.00
03-01-86C		2		2.56
03-01-89A	Ms.Lindawan Limkruayarn	1	104 Moo 5, Khogyang Sub-District,Nuea Khlong District,Krabi Province	8.00
03-01-89B		2		7.91
03-01-89C		3		3.28
03-01-90A	Mrs.Ponsiri Raknukoon	1	69, Khao Phanom Sub-District, Khao Phanom District, Krabi Province	5.47
03-01-90B		2		9.55
03-01-90C		3		2.40
03-01-90D		4		9.55
03-01-90E		5		0.00
03-01-94A	Mrs.Pinwadee Prairoe	1	73 Moo 4, Hui-Yoong Sub-District,Nuea Khlong District,Krabi Province	2.57
03-01-94B		2		1.44
03-01-94C		3		0.80
03-01-96A	Mrs.Noppamas Linkruayarn	1	104 Moo 5, Khogyang Sub-District,Nuea Khlong District,Krabi Province	4.96
03-01-96B		2		1.60
03-01-96C		3		6.40
03-01-97	Mr.Eakwuth Rouy-Autara	1	104 Moo 5, Khogyang Sub-District,Nuea Khlong District,Krabi Province	12.00
03-01-98A	Mr.Theerachot Watanapongpitak	1	104 Moo 5,Khogyang Sub-District,Nuea Khlong District,Krabi Province	10.23



03-02-01A	Mr.Pirayuth Thongked	1	94 Moo 1, Narkhao Sub-District, Khao Phanom District, Krabi Province	5.60
03-02-01B		2		4.80
03-02-01C		3		7.20
03-02-01D		4		5.76
03-02-01E		5		1.44
03-02-01F		6		1.41
03-02-01G		7		3.04
03-02-01H		8		0.62
03-02-03A	Mr.Chopsak Doungpakdee	1	18/2 Moo 2, Narkhao Sub-District, Khao Phanom District, Krabi Province	3.20
03-02-03B		2		1.92
03-02-07A	Mr.Prasarn Thongyod		58 Moo 1, Narkhao Sub-District, Khao Phanom District, Krabi Province	6.88
03-02-08A	Mr.Wirat Boonprakob	1	88/1 Moo 2, Narkhao Sub-District, Khao Phanom District, Krabi Province	4.00
03-02-08B		2		3.19
03-02-09A	Mr.Somchit Nakamano	1	55/2 Moo 1, Narkhao Sub-District, Khao Phanom District, Krabi Province	1.44
03-02-09B		2		1.92
03-02-09C		3		5.44
03-02-13A	Mrs.Chan Somdoug	1	32 Moo 2, Narkhao Sub-District, Khao Phanom District, Krabi Province	2.14
03-02-13B		2		0.96
03-02-16A	Mr.Piroj Boot-Ngao	1	3/2 Moo 5, Narkhao Sub-District, Khao Phanom District, Krabi Province	2.40
03-02-16B		2		1.60
03-02-17A	Mr.Charan Nakamano	1	8/2 Moo 6, Narkhao Sub-District, Khao Phanom District, Krabi Province	2.24
03-02-17B		2		1.60
03-02-17C		3		4.48
03-02-19	Mr.Kamol Sinthurat	1	126 Moo 4, Narkhao Sub-District, Khao Phanom District, Krabi Province	7.36
03-02-20	Mr.Prasit Sangrod	1	38/2 Moo 2, Narkhao Sub-District, Khao Phanom District, Krabi Province	4.48
03-02-22A	Mr.Thanoo Charoensook	1	100 Moo 1, Narkhao Sub-District, Khao Phanom District, Krabi Province	1.60
03-02-22B		2		1.04
03-02-22C		3		0.80
03-02-22D		4		0.80



03-02-22E		5		1.60
03-02-22F		6		1.60
03-02-24A		1	37/3 Moo 2, Narkhao Sub-District, Khao Phanom District, Krabi Province	5.02
03-02-24B	Mr.Kherm Keawkao	2		4.16
03-02-24C		3		3.20
03-02-24D		4		5.76
03-02-26A	Mr.Khum Keawkao	1		101 Moo 7, Narkhao Sub-District, Khao Phanom District, Krabi Province
03-02-26B		2	5.92	
03-02-26B		3	2.88	
03-02-26B		4	3.20	
03-02-28A	Mr.Sunan Sangrod	1	57 Moo 1, Narkhao Sub-District, Khao Phanom District, Krabi Province	8.60
03-02-28B		2		1.63
03-02-29A	Mr.Sutham Sawadpirom	1	57 Moo 3, Narkhao Sub-District, Khao Phanom District, Krabi Province	4.80
03-02-30A	Mr.Somchai Sangrod	1	30 Moo 2, Narkhao Sub-District, Khao Phanom District, Krabi Province	4.80
03-02-33A	Mr.Sukhon Sawadpirom	1	62 Moo 3, Narkhao Sub-District, Khao Phanom District, Krabi Province	22.40
03-02-33B		2		3.21
03-02-33C		3		6.08
03-02-34A	Mr.Supat Rodrung	1	115 Moo 1, Narkhao Sub-District, Khao Phanom District, Krabi Province	2.40
03-02-34B		2		6.40
03-02-34C		3		1.92
03-02-35A	Mr.Amnouy Sasdeedech	1	81 Moo 1, Narkhao Sub-District, Khao Phanom District, Krabi Province	5.60
03-02-35B		2		2.08
03-02-36A	Mr.Satja Udomsri	1	36 Moo 1, Narkhao Sub-District, Khao Phanom District, Krabi Province	9.60
03-02-39A	Mr.Jit Phetlook	1	Moo 1, Narkhao Sub-District, Khao Phanom District, Krabi Province	6.26
03-02-39B		2		1.73
03-02-40A	Mrs.Jenjit Sangrod	1	110 Moo 1, Narkhao Sub-District, Khao Phanom District, Krabi Province	1.64
03-02-40B		2		3.20
03-02-43A	Mr.Wai Praspai	1	59 Moo 6, Narkhao Sub-District, Khao Phanom District, Krabi Province	3.67
03-02-43B		2		1.60



03-02-45	Mr.Sitthichok Sarnsuwan	1	54/28, Narkhao Sub-District, Khao Phanom District, Krabi Province	3.20
03-02-46A	Mr.Chatchai Somdoug	1	114 Moo 7, Narkhao Sub-District, Khao Phanom District, Krabi Province	4.95
03-02-46B		2		0.88
03-02-50	Mr.Yuthahas Chooprapon	1	23/6 Moo 6 Narkhao Sub-District, Khao Phanom District, Krabi Province	2.56
03-02-57A	Mr.Monthien Boonthongkeaw	1	Moo 1, Narkhao Sub-District, Khao Phanom District, Krabi Province	1.60
03-02-57b		2		1.92
03-02-59A	Mr.Boonchana Srichan	1	Moo 1, Narkhao Sub-District, Khao Phanom District, Krabi Province	1.60
03-02-59C		2		2.56
03-02-60A	Mr.Sakda srichan	1	329 Moo 3, Narkhao Sub-District, Khao Phanom District, Krabi Province	3.21
03-02-60B		2		2.24
03-02-60C		3		2.21
03-03-01A	Mr.Kriengkrai Boonphan	1	79 Moo 6, Hui-Yoong Sub-District,Nuea Khlong District,Krabi Province	1.92
03-03-01B		2		2.08
03-03-02A	Mr.Eakaluck Vechchakul	1	21 Moo 5, Amphoe Nuea Khlong, Krabi Province	2.27
03-03-02B		2		0.00
03-03-03A	Mr.Janya Panmat	1		2.50
03-03-03B		2		2.72
03-03-03C		3		1.53
03-03-03D		4		1.37
03-03-03E		5		2.71
03-03-04A	Mr.Choksak Limkruayan	1	11 Moo 6, Hui-Yoong Sub-District,Nuea Khlong District,Krabi Province	2.72
03-03-04B		2		4.00
03-03-05A	Mrs.Chalerm Chaybunthid	1	10 Moo 6, Hui-Yoong Sub-District,Nuea Khlong District,Krabi Province	4.94
03-03-05B		2		0.00
03-03-06A	Mrs.Kanokwan Boonyanuphong	1	17 Moo 1, Hui-Yoong Sub-District,Nuea Khlong District,Krabi Province	2.21
03-03-06B		2		1.59
03-03-06C		3		3.65
03-03-07	Mrs.Kanokorn Saipan	1	Moo 3, Hui-Yoong Sub-District,Nuea Khlong District,Krabi Province	4.80
03-03-08A	Mr.Kawee Soodchan	1	119 Moo 8, Amphoe Khao Phanom, Krabi Province	1.25



03-03-08B		2		9.54
03-03-8C		3		5.79
03-03-09	Mrs.Karnchana Thaweerat	1	87 Moo 3, Hui-Yoong Sub-District,Nuea Khlong District,Krabi Province	6.82
03-03-10A	Mr.Kamphol Eiad-Eau	1	955 Moo 2, Amphoe Nuea Khlong, Krabi Province	2.92
03-03-10B		2		1.28
03-03-10C		3		1.60
03-03-10D		4		2.72
03-03-11	Mr.Kwanjai Kao-Auan	1	168 Ratdumnern Road, Amphoe Mueang, Krabi Province	7.62
		2		
03-03-12A	Mr.Jaree Udomsri	1	54 Moo 4, Khao Phanom Sub-District, Khao Phanom District, Krabi Province	1.06
03-03-12B		2		2.50
03-03-13	Mr.Jamnien Wajidee	1	15 Moo 4, Amphoe Mueang, Krabi Province	1.98
03-03-14	Mr.Jumpee Chaiphong	1	9 Moo 6, Hui-Yoong Sub-District,Nuea Khlong District,Krabi Province	2.85
		2		
03-03-16A	Mr.Jit Chaikao	1	37 Moo 7, Hui-Yoong Sub-District,Nuea Khlong District,Krabi Province	2.42
03-03-16B		2		7.43
03-03-17	Mr.Chana Nakfon	1	82/1 Moo 6, Hui-Yoong Sub-District,Nuea Khlong District,Krabi Province	4.58
03-03-18A	Mr.Chaitad Nakfon	1	103 Moo 4, Hui-Yoong Sub-District,Nuea Khlong District,Krabi Province	3.52
03-03-18B		2		3.52
03-03-18C		3		7.04
03-03-18D		4		3.52
03-03-18E		5		0.98
03-03-18F		6		4.80
03-03-18G		7		9.60
03-03-19A	Mr.Chumni Udomsri	1	53 Moo 2, Amphoe Khao Phanom, Krabi Province	4.81
03-03-19B		2		1.77
03-03-20A	Mr.Theaweeporn Yingpradit	1	87 Moo 1, Hui-Yoong Sub-District,Nuea Khlong District,Krabi Province	1.72
03-03-20B		2		1.76
03-03-20C		3		0.00



03-03-21A	Mr.Theerachai Piti	1	38/1 Moo 9, Hui-Yoong Sub-District,Nuea Khlong District,Krabi Province	1.67
03-03-21B		2		5.09
03-03-22A	Mrs.Napaporn Songkerd	1	45 Moo 1, Hui-Yoong Sub-District,Nuea Khlong District,Krabi Province	1.74
03-03-22B		2		0.94
03-03-22C		3		1.66
03-03-22D		4		0.00
03-03-24	Mr.Nitipan Sangchoothong	1	1/1 Moo 5, Narkhao Sub-District, Khao Phanom District, Krabi Province	2.87
03-03-25A	Mr.Buncha Chontee	1	167 Moo 1, Amphoe Nuea Khlong, Krabi Province	3.79
03-03-25B		2		3.17
03-03-25C		3		3.08
03-03-26A	Mr.Boonrua Kongpakdee	1	14 Moo 1, Khokyang Sub-District, Nuea Khlong District,Krabi Province	7.77
03-03-26B		2		1.37
03-03-27A	Mr.Pakasit Preecha	1	69 Moo 1, Khao Phanom Sub-District, Khao Phanom District, Krabi Province	2.56
03-03-27B		2		2.40
03-03-27C		3		3.20
03-03-28A	Mr.Prasart Phetlook	1	11 Moo 4, Khao Phanom Sub-District, Khao Phanom District, Krabi Province	3.73
03-03-28B		2		1.27
03-03-29A	Mr.Pramote Keawprasit	1	113 Moo 6, Hui-Yoong Sub-District,Nuea Khlong District,Krabi Province	0.65
03-03-30A	Mrs.Pranee Kongphat	1	101 Moo 1, Khao Phanom Sub-District, Khao Phanom District, Krabi Province	1.82
03-03-31A	Mr.Panich Vetchakul	1	93 Moo 5, Hui-Yoong Sub-District,Nuea Khlong District,Krabi Province	5.12
03-03-32A	Mr.Pichai Chaisook	1	126 Moo 4, Khao Phanom Sub-District, Khao Phanom District, Krabi Province	4.80
03-03-32B		2		8.00
03-03-33	Mr.Pirat Piboon	1	109 Moo 3, Khao Phanom Sub-District, Khao Phanom District, Krabi Province	7.91
03-03-34A	Mrs.Pakwan Somsoung	1	15 Moo 1, Khao Phanom Sub-District, Khao Phanom District, Krabi Province	3.27
03-03-34B		2		1.08
03-03-35A	Mr.Pisit Thongprung	1	9 Moo 1, Khao Phanom Sub-District, Khao Phanom District, Krabi Province	3.20
03-03-35B		2		3.20



03-03-35C		3		4.32
03-03-36A	Mr.Manit Lerdkrai	1	113 Moo 1, Hui-Yoong Sub-District,Nuea Khlong District,Krabi Province	12.16
03-03-37	Mrs.Ratana Srichai	1	182 Khao Phanom Sub-District, Khao Phanom District, Krabi Province	3.82
03-03-39	Mr.Ranong Chaibuth	1	244 Moo 5, Hui-Yoong Sub-District,Nuea Khlong District,Krabi Province	3.31
03-03-40A	Mrs.Lamom Boonkua	1	282 Moo 5, Khokyang Sub-District, Nuea Khlong District,Krabi Province	2.97
03-03-40B		2		1.91
03-03-40C		3		2.21
03-03-40D		4		2.73
03-03-40E		5		2.76
03-03-40F		6		1.56
03-03-40G		7		3.61
03-03-41A	Mrs.Lamai Jeawkok	1	20 Moo 5, Khokyang Sub-District, Nuea Khlong District,Krabi Province	1.51
03-03-41B		2		1.91
03-03-41C		3		3.53
03-03-41D		4		2.55
03-03-41E		5		2.84
03-03-41F		6		5.23
03-03-42A	Mrs.Laddawan Phongsriratana	1	5 Pruksalai Road, Mueang District,Krabi Province	4.19
03-03-42B		2		4.80
03-03-42C		3		2.88
03-03-42D		4		4.48
03-03-43A	Mrs.Wongsri Saneechai	1	142 Moo 2, Khao Phanom Sub-District, Khao Phanom District, Krabi Province	3.97
03-03-43B		2		2.40
03-03-43C		3		8.64
03-03-43D		4		4.80
03-03-45A	Mrs.Wanna Choomuang	1	156 Moo 1, Khao Phanom Sub-District, Khao Phanom District, Krabi Province	1.83
03-03-45B		2		1.85
03-03-46A	Mr.Wittaya Chana	1	151 Moo 3, Nuea KhlongSub-District, Nuea Khlong District,Krabi Province	8.00
03-03-46B		2		8.00



03-03-47A	Mr.Wirat Ratanaburi	1	142 Moo 4, Hui-Yoong Sub-District,Nuea Khlong District,Krabi Province	4.07
03-03-47B		2		1.72
03-03-47C		3		0.55
03-03-48A	Mrs.Amphan Maneemai	1	78 Moo 4, Khao Phanom Sub-District, Khao Phanom District, Krabi Province	4.80
03-03-49A	Mr.Somnuk Changping-Nga	1	187 Moo 3, Hui-Yoong Sub-District,Nuea Khlong District,Krabi Province	2.59
03-03-50A	Mr.Somphong Udomsri	1	184 Moo 4, Amphoe Khao Phanom, Krabi Province	17.12
03-03-50B		2		1.92
03-03-52A	Mrs.Sompak Sanyapan	1	59/2 Moo 6, Hui-Yoong Sub-District,Nuea Khlong District,Krabi Province	8.87
03-03-52B		2		1.69
03-03-52C		3		0.61
03-03-52D		4		3.19
03-03-52E		5		1.61
03-03-52F		6		4.08
03-03-52G		7		5.92
03-03-52H		8		9.48
03-03-52I		9		1.61
03-03-52J		10		1.63
03-03-52K		11		5.36
03-03-52L		12		3.88
03-03-53A	Mr.Sommas Kraibuth	1	37 Moo 7, Amphoe Nuea Khlong, Krabi Province	1.44
03-03-53B		2		1.73
03-03-53C		3		2.27
03-03-53D		4		4.45
03-03-54A	Mr.Sanchai Songkerd	1	58 Moo 6, Hui-Yoong Sub-District,Nuea Khlong District,Krabi Province	5.09
03-03-54B		2		1.63
03-03-56	Ms.Tanutchaporn Udomsir	1	239 Moo 3, Hui-Yoong Sub-District,Nuea Khlong District,Krabi Province	6.24
03-03-57	Ms.Wallapa Saipan	1	240 Moo 3, Hui-Yoong Sub-District,Nuea Khlong District,Krabi Province	6.14
03-03-59A	Mr.Samnao Chuyrak	1	163 Moo 5, Khokyang Sub-District, Nuea Khlong District,Krabi Province	5.13

03-03-59B		2		9.81
03-03-59C		3		10.19
03-03-59D		4		4.54
03-03-59E		5		10.02
03-03-59F		6		5.03
03-03-60A	Mrs.Sukhon Nithiphatkul	1	73/2 Krabi Road, Amphoe Mueang, Krabi Province	1.43
03-03-60B		2		3.09
03-03-61A	Mrs.Sujitra Tiwthao	1	145 Moo 1, Khao Phanom Sub-District, Khao Phanom District, Krabi Province	1.95
03-03-61B		2		0.74
03-03-61C		3		2.61
03-03-62A	Mr.Sutiphong Noochaiprod	1	39 Moo 5, Khokyang Sub-District, Nuea Khlong District,Krabi Province	3.26
03-03-65A	Mr.Suriyun Kuaboth	1	13/1 Moo 2, Khao Phanom Sub-District, Khao Phanom District, Krabi Province	5.62
03-03-67A	Mr.Apisak Mengbuth	1	58 Moo 3, Hui-Yoong Sub-District,Nuea Khlong District,Krabi Province	1.53
03-03-67B		2		2.00
03-03-67C		3		3.24
03-03-67D		4		1.98
03-03-67E		5		2.46
03-03-67F		6		1.20
03-03-68	Mrs.Ajcharawadee Thaweerat	1	87 Moo 3, Hui-Yoong Sub-District,Nuea Khlong District,Krabi Province	2.21
03-03-70A	Mr.Amnuay Noo-Ngen	1	333 Moo 5, Khao Phanom Sub-District, Khao Phanom District, Krabi Province	3.16
03-03-70B		2		2.47
03-03-70C		3		1.97
03-03-71A	Mr.Udom Vetchakul	1	21/1 Moo 1, Khao Phanom Sub-District, Khao Phanom District, Krabi Province	1.87
03-03-71B		2		0.89
03-03-72	Ms.Patcharin Soudoung	1	50 Khao Phanom Sub-District, Khao Phanom District, Krabi Province	3.56
03-03-74	Mrs.Boonkreg Petchkrua	1	51 Moo 3, Hui-Yoong Sub-District,Nuea Khlong District,Krabi Province	5.87
03-03-75	Mr.Bunyarit Chamnankij	1	64Moo 5, Hui-Yoong Sub-District,Nuea Khlong District,Krabi Province	2.93



03-03-77A	Mr.Traveep Na Thalang	1	130 Ruek Kaseam Road, Amphoe Mueang, Krabi Province	8.15
03-03-77B		2		7.46
03-03-77C		3		3.28
03-03-78	Mr.Thamrong Raknukul	1	127 Moo 6, Khao Phanom Sub-District, Khao Phanom District, Krabi Province	3.20
03-03-79A	Mrs.Leaka Pisarnkularaya	1	106 Moo 6, Hui-Yoong Sub-District,Nuea Khlong District,Krabi Province	11.04
03-03-79B		2		2.40
03-04-01A	Mr.Authai Nakfon	1	140 Moo 5, Hui-Yoong Sub-District,Nuea Khlong District,Krabi Province	3.45
03-04-01B		2		4.62
03-04-01C		3		1.73
03-04-02A	Mr.Phattanapong Thawerat	1	221 Moo 5, Hui-Yoong Sub-District,Nuea Khlong District,Krabi Province	4.21
03-04-02B		2		2.60
03-04-02C		3		4.37
03-04-03A	Mrs.Sirirat Kiatphaisanwarricha	1	154 Moo 5, Khao Phanom Sub-District, Khao Phanom District, Krabi Province	2.69
03-04-03B		2		5.10
03-04-05A	Mr.Wittaya Namwong	1	26 Moo 4, Amphoe Nuea Khlong, Krabi Province	1.18
03-04-06A	Mrs.Monthira Chuaibamruhg	1	58 Moo 7, Khao Phanom Sub-District, Khao Phanom District, Krabi Province	7.84
03-04-06B		2		1.63
03-04-06C		3		1.53
03-04-06D		4		1.71
03-04-06E		5		2.80
03-04-06F		6		0.33
03-04-06G		7		5.42
03-04-08A	Mr.Sanaeh Chomanee	1	235 Moo 3, Hui-Yoong Sub-District,Nuea Khlong District,Krabi Province	4.73
03-04-09A	Mr.Suphot Petlu	1	162 Moo 5, Hui-Yoong Sub-District,Nuea Khlong District,Krabi Province	3.96
03-04-09B		2		1.64
03-04-09C		3		1.76
03-04-10A	Mr.Preecha Kalong	1	80 Moo 3, Amphoe Nuea Khlong, Krabi Province	0.78
03-04-10B		2		1.50

03-05-01A	Mr.Wachiraphan Sanyapan	1	4 Moo 6, Hui-Yoong Sub-District,Nuea Khlong District,Krabi Province	0.88
03-05-01B		2		5.96
03-05-02A	Mr.Patiphon Singharun	1	102/14 Moo 3, Amphoe Nuea Khlong, Krabi Province	3.22
03-05-03A	Mr.Chomkwan Piakbut	1	53 Moo 5, Hui-Yoong Sub-District,Nuea Khlong District,Krabi Province	1.96
03-05-04A	Mr.Supphakon Ariyawong	1	929 Moo 2, Amphoe Nuea Khlong, Krabi Province	8.00
03-05-05A	Mr.Sathit Silueang	1	228 Moo 1, Hui-Yoong Sub-District,Nuea Khlong District,Krabi Province	3.50
03-05-05B		2		1.83
03-05-06A	Mrs.Seri Kingchum	1	82 Moo 6, Hui-Yoong Sub-District,Nuea Khlong District,Krabi Province	0.00
03-05-06B		2		2.61
03-05-07A	Mrs.Laiat Thapsai	1	15 Moo 2, Khokyang Sub-District, Nuea Khlong District,Krabi Province	2.54
03-05-08A	Mrs.Keson Thongon	1	34 Moo 1, Khao Phanom Sub-District, Khao Phanom District, Krabi Province	2.13
03-05-09A	Mrs.Bunkuea Thanasanphongsakon	1	263 Moo 1, Hui-Yoong Sub-District,Nuea Khlong District,Krabi Province	2.30
03-05-10A	Mrs.Thanchanok Phaithun	1	299 Moo 7, Khao Phanom Sub-District, Khao Phanom District, Krabi Province	1.50
03-05-10B		2		3.40
03-05-10C		3		2.57
03-05-10D		4		5.27
03-05-10E		5		2.65
03-05-10F		6		0.65
03-05-12A	Mrs.Li Phumiphamon	1	82/3 Moo 6, Khokyang Sub-District, Nuea Khlong District,Krabi Province	6.49
03-05-12B		2		6.06
03-05-12C		3		2.35
03-05-13A	Mrs.Suchitra Chiaokok	1	409 Moo 5, Amphoe Nuea Khlong, Krabi Province	0.52
03-05-13B		2		3.94
03-05-13C		3		0.77
03-05-13D		4		2.68
03-05-14A	Mrs.Chiamchit Sipan	1	37 Moo 6, Hui-Yoong Sub-District,Nuea Khlong District,Krabi Province	2.23



03-05-15A	Mr.Samroeng Phetkhrua	1	123 Moo 3, Hui-Yoong Sub-District, Nuea Khlong District, Krabi Province	6.26
03-05-16A	Mr.Chun Engchuan	1	80 Moo 4, Hui-Yoong Sub-District, Nuea Khlong District, Krabi Province	4.57
		2		
		3		
		4		
03-05-16B		5		3.51
03-05-17A	Mrs.Saowakhon Imkasem	1	86 Moo 6, Hui-Yoong Sub-District, Nuea Khlong District, Krabi Province	2.01
03-05-17B		2		2.56
03-05-18A	Mr.Sakhon Thawirat	1	126 Moo 3, Hui-Yoong Sub-District, Nuea Khlong District, Krabi Province	1.60
03-05-19A	Mr.Athirat Khongphon	1	130 Moo 2, Hui-Yoong Sub-District, Nuea Khlong District, Krabi Province	2.57
03-05-19B		2		2.72
03-05-20A	Mrs.Nurai Panphan	1	28 Moo 1, Khao Phanom Sub-District, Khao Phanom District, Krabi Province	0.00
03-05-22A	Mr.Saichon Kaeokao	1	59 Moo 2, Narkhao Sub-District, Khao Phanom District, Krabi Province	3.36
03-05-22B		2		6.40
03-05-23A	Mr.Banyat Sichan	1	26 Moo 3, Narkhao Sub-District, Khao Phanom District, Krabi Province	1.49
03-05-24A	Mrs.Phataraporn Phumiphamon	1	233 Moo 4, Hui-Yoong Sub-District, Nuea Khlong District, Krabi Province	5.27
03-05-25A	Mr.Khong Kaeokao	1	48 Moo 2, Amphoe Khao Phanom, Krabi Province	2.97
03-05-25B		2		8.00
03-05-27A	Mr.Sophon Chumbut	1	124 Moo 1, Narkhao Sub-District, Khao Phanom District, Krabi Province	3.90
03-05-27B		2		3.20
03-05-27C		3		3.36
03-05-28A	Mr.Preecha Lanthai	1	40/1 Moo 1, Narkhao Sub-District, Khao Phanom District, Krabi Province	5.39
03-05-30A	Mr.Aphirak Malikhun	1	1 Moo 7, Narkhao Sub-District, Khao Phanom District, Krabi Province	2.77
03-05-34A	Mr.Pramot Sangrot	1	Moo 1, Narkhao Sub-District, Khao Phanom District, Krabi Province	12.80
03-05-35A	Mr.Worrakit Saengsi	1	35 Moo 4, Khao Phanom Sub-District, Khao Phanom District, Krabi Province	2.62

03-05-35B		2		0.00
03-05-36A	Mrs.Sumonsi Phueaksaeng	1	217 Moo 1, Khao Phanom Sub-District, Khao Phanom District, Krabi Province	9.44
03-05-36B		2		7.68
03-05-36C		3		5.23
03-05-36D		4		0.00
03-05-37A	Mr.Somsak Kaeoket	1	21 Moo 6, Narkhao Sub-District, Khao Phanom District, Krabi Province	3.40
03-05-39A	Mrs.Sukanya Phayayam	1	82 Moo 2, Amphoe Nuea Khlong, Krabi Province	0.59
03-05-39B		2		0.93
03-05-40A	Mr.Praphon Chipwan	1	116 Moo 4, Khao Phanom Sub-District, Khao Phanom District, Krabi Province	1.98
03-05-43A	Mrs.Amnuai Chaibun	1	191 Moo 4, Hui-Yoong Sub-District,Nuea Khlong District,Krabi Province	1.05
03-05-44A	Mrs.Pornthpi Asa	1	63 Moo 4, Hui-Yoong Sub-District,Nuea Khlong District,Krabi Province	2.47
03-05-45A	Mrs.Nunit Nuwui	1	79 Moo 4, Hui-Yoong Sub-District,Nuea Khlong District,Krabi Province	1.58
03-05-48A	Mr.Sanan Mueangkoet	1	136 Moo 4, Hui-Yoong Sub-District,Nuea Khlong District,Krabi Province	1.42
03-05-49A	Mrs.Waraporn Mueangkoet	1	28/1 Moo 1, Hui-Yoong Sub-District,Nuea Khlong District,Krabi Province	3.20
03-05-49B		2		2.30
03-05-50A	Mrs.Ampai phunsawat	1	17 Moo 1, Khao Phanom Sub-District, Khao Phanom District, Krabi Province	2.32
03-05-51A	Mrs.Pornthip Jiradilo	1	26/2 Moo 3, Hui-Yoong Sub-District,Nuea Khlong District,Krabi Province	2.50
03-05-52A	Mrs.Jutarat Raknukul	1	160/5 Moo 1,Amphoe Phromkeree,Naonsithammarat Province	0.00
03-05-53A	Mrs.Supap Rongrat	1	257 Moo 5, Khao Phanom Sub-District, Khao Phanom District, Krabi Province	2.76
03-05-53B		2		2.92
03-05-53C		3		0.00
03-05-54	MR.Phutanet Rongrat	1	258 Moo 5, Khao Phanom Sub-District, Khao Phanom District, Krabi Province	3.62
03-06-01A	Mrs.Prida Saehoy	1	6 Moo 3, Hui-Yoong Sub-District,Nuea Khlong District,Krabi Province	2.06



03-06-02A	Mr.Amporn Taweerat	1	24 Moo 3, Hui-Yoong Sub-District,Nuea Khlong District,Krabi Province	0.96
03-06-02B		2		3.19
03-06-02C		3		1.59
03-06-03A	Mr.Withun Srisawat	1	8 Moo 3, Hui-Yoong Sub-District,Nuea Khlong District,Krabi Province	3.14
03-06-04A	Mrs.Keson Nueakhleng	1	85 Moo 4, Hui-Yoong Sub-District,Nuea Khlong District,Krabi Province	0.85
03-06-04B		2		2.85
03-06-05A	Mrs.Ubol Arsa	1	186 Moo 4, Hui-Yoong Sub-District,Nuea Khlong District,Krabi Province	0.90
03-06-05B		2		1.30
03-06-05C		3		1.28
03-06-06A	Mrs.kanha Kaewklam	1	156 Moo 4, Hui-Yoong Sub-District,Nuea Khlong District,Krabi Province	1.09
03-06-07A	Mrs.Pikul Mueangkoed	1	187 Moo 4, Hui-Yoong Sub-District,Nuea Khlong District,Krabi Province	1.17
03-06-07B		2		0.00
03-06-08	Mrs.Pranom Singchu	1	63 Moo 4, Hui-Yoong Sub-District,Nuea Khlong District,Krabi Province	2.14
03-06-09A	Mrs.Kreewan Engchuan	1	224 Moo 4, Hui-Yoong Sub-District,Nuea Khlong District,Krabi Province	1.39
03-06-09B		2		0.84
03-06-09C		3		1.75
03-06-09D		4		1.44
03-06-09E		5		1.78
03-06-10A	Mr.Roengsai Singchu	1	150 Moo 4, Hui-Yoong Sub-District,Nuea Khlong District,Krabi Province	2.13
03-06-10B		2		0.00
03-06-11A	Ms.Bunchu Chongkong	1	229 Moo 4, Hui-Yoong Sub-District,Nuea Khlong District,Krabi Province	0.95
03-06-12A	Mrs.Patnaree Horkun	1	230 Moo 5, Hui-Yoong Sub-District,Nuea Khlong District,Krabi Province	2.03
03-06-13A	Mrs.Renu Kongphon	1	172 Moo 6, Hui-Yoong Sub-District,Nuea Khlong District,Krabi Province	0.00
03-06-13B		2		0.00
03-06-13C		3		1.58
03-06-13D		4		1.66



03-06-13E		5		6.34
03-06-13F		6		3.73
03-06-14A	Mrs.Prathip Chuduang	1	24 Moo 2, Khlongkhanan Sub-District, Nuea Khlong District,Krabi Province	1.78
03-06-15A	Mrs.Chaaiam Saenbodo	1	362 Moo 2, Khlongkhanan Sub-District, Nuea Khlong District,Krabi Province	0.92
03-06-15B		2		6.56
03-06-16A	Mrs.Sarinrat Thongkham	1	108 Moo 2, Khlongkhamao Sub-District, Nuea Khlong District,Krabi Province	0.85
03-06-16B		2		0.87
03-06-16C		3		0.78
03-06-16D		4		1.00
03-06-16E		5		0.96
03-06-17A	Mr.Pornchai Wandee	1	146 Moo 3, Nuea Khlong Sub-District, Nuea Khlong District,Krabi Province	1.67
03-06-18A	Mr.Weerapong Ruornthong	1	68 Moo 5, Nuea Khlong Sub-District, Amphoe Nuea Khlong, Krabi Province	2.32
03-06-19A	Mr.Tiwa Chueabanko	1	261 Moo 6, Pakasai Sub-District, Nuea Khlong District,Krabi Province	7.20
03-06-20A	Mrs.Ponpimol Yanpaisan	1	189 Moo 7, Pakasai Sub-District, Nuea Khlong District,Krabi Province	1.33
03-06-20B		2		0.59
03-06-21A	Mrs.Chiajit Panrod	1	24 Moo 7, Pakasai Sub-District, Nuea Khlong District,Krabi Province	2.02
20-06-21B		2		1.33
03-06-22A	Mrs.Rattana Nungoen	1	279 Moo 1, Khao Phanom Sub-District, Khao Phanom District, Krabi Province,81120	3.62
03-06-23A	Mrs.Jamnian Audomsri	1	134 Moo 6, Khao Phanom Sub-District, Khao Phanom District, Krabi Province,81120	2.20
03-06-24A	Mr.Khomkrit Chaiyachit	1	235 Moo 6, Khao Phanom Sub-District, Khao Phanom District, Krabi Province,81120	1.71
03-06-24B		2		1.81
03-06-24C		3		1.84
03-06-25A	Mrs.Phrim Samakkaew	1	55 Moo 7, Khao Phanom Sub-District, Khao Phanom District, Krabi Province,81120	0.00
03-06-25B		2		0.00
03-06-26A	Mrs.Chanya Morakod	1	55/2 Moo 7, Khao Phanom Sub-District, Khao Phanom District, Krabi Province,81120	2.30



03-06-27A	Ms.Anutin Dachraksa	1	65 Moo 7, Khao Phanom Sub-District, Khao Phanom District, Krabi Province,81120	0.89
03-06-28A	Mr.Mmmual Dachraksa	1	255 Moo 7, Khao Phanom Sub-District, Khao Phanom District, Krabi Province,81120	1.89
03-06-29A	Mr.Suriya Dachraksa	1	51/1 Moo 7, Khao Phanom Sub-District, Khao Phanom District, Krabi Province,81120	5.96
03-06-30A	Ms.Sangonsee Suwannaphan	1	67 Moo 7, Khao Phanom Sub-District, Khao Phanom District, Krabi Province,81120	0.00
03-06-30B		2		0.00
03-06-30C		3		0.00
03-06-31A	Mr.Somkhuan Dachraksa	1	63 Moo 7, Khao Phanom Sub-District, Khao Phanom District, Krabi Province,81120	4.40
03-06-32A	Mr.Somsak Kaewyai	1	61/1 Moo 7, Khao Phanom Sub-District, Khao Phanom District, Krabi Province,81120	2.10
03-06-33A	Mr.Phirachai Thepsanta	1	176 Moo 2, Narkhao Sub-District, Khao Phanom District, Krabi Province,81120	3.20
03-06-33B		2		2.56
03-06-34A	Mr.Prachop Kaeosoem	1	19 Moo 7, Narkhao Sub-District, Khao Phanom District, Krabi Province,81120	1.28
03-06-35A	Mrs.Prapa Rattanaphan	1	143 Moo 1, Chaiburi Sub-District, Chaibur District, Surat Thani Province	3.12
03-06-35B		2		4.32
03-06-36A	Mr.Chumroon Navaveeachakul	1	27 Moo 1, Thapprik Sub-District, Mueang District, Krabi Province	4.72
03-06-36B		2		8.30
03-06-36C		3		2.58
03-06-37A	Mr.Sucdeep Chanthai	1	22 Moo 1, Thapprik Sub-District, Mueang District, Krabi Province	1.71
03-06-37B		2		1.42
03-06-38A	Mr.Pricha lilasuthanon	1	18 Moo 2, Nuea Khlong Sub-District, Amphoe Nuea Khlong, Krabi Province	1.93
03-06-38B		2		0.42
03-06-39A	Mr.Sanong Kanhakun	1	52/1 Moo 6, Hui-Yoong Sub-District, Amphoe Nuea Khlong, Krabi Province	0.74
03-06-39B		2		2.41
03-06-39C		3		3.35
03-06-39D		4		1.19
03-06-39E		5		0.90
03-06-39F		6		0.99



03-06-40A		1		0.00
03-06-40B	Mrs.Arree Saengsakun	2	127 Moo 3, Khao Phanom Sub-District, Khao Phanom District, Krabi Province	0.00
03-06-40C		3		0.70
03-06-41A		Mrs.Oranut Nakseng		1
Total number of group member = 236				1,771.83

Location map(s) of Certification Unit



Figure Error! No text of specified style in document. Location of the UPOIC (Nueakhlong-Khaophanom) in Krabi province, Thailand

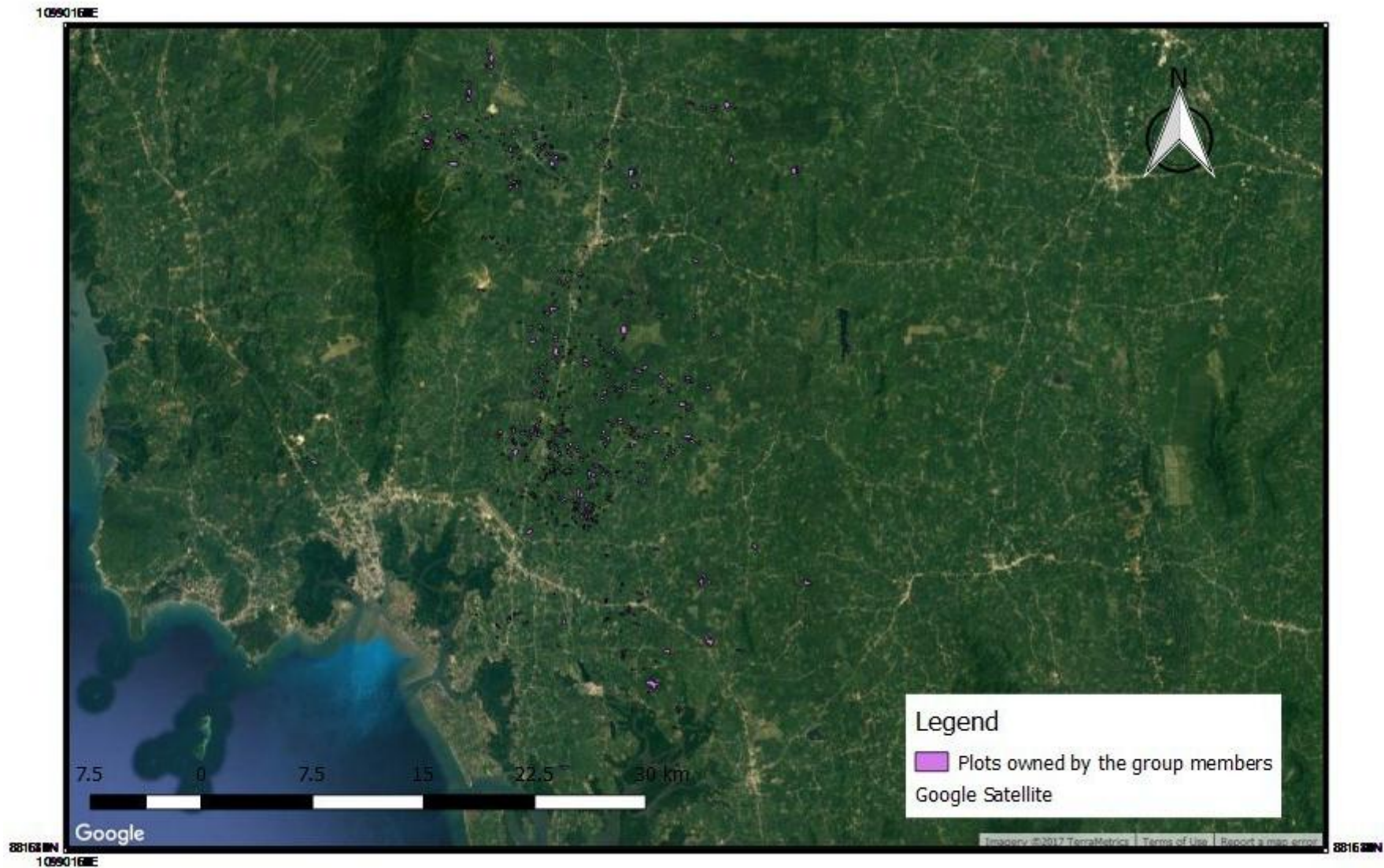


Figure 2 Geographical Map of member's plots of UPOIC (Nueakhleng-Khaophanom)

Assessment Programme

AUDIT				
Person	Date	Time	Place	Activity
Day 1 (25.10.2016)				
CS	25.10.2016	09.00-09.30	Group administration office	Opening meeting Find tune the understanding on the audit plan and briefings the RSPO audit process
CS		09.30-17.00	Group administration office	Group certification standard <ul style="list-style-type: none"> ● Group requirement (Group elements, compliance with standards, group manager) ● Group management document and requirements (Group management structure and content, internal assessment system) ● Chain of custody
CS		17.00-17.30	Group administration office	Brief the finding from the day 1
		17.30		End of day 1
Day 2 (26.10.2016)				
CS + PN + OP	26.10.2016	09.00-10.00	Group administration office	Public consultation meeting at Central Office <ul style="list-style-type: none"> ● EIA, HCV, Burning Issues, Waste Mgt, Agrochem. ● SIA, Communication, Complaint, Customary ● Wages, Trade Union, Anti Child Labour/ Discrimination/Sexual Harrasment, Payment to Outgrower, CSR
CS + PN + OP		11.00-12.00	Mr Amporn Thaweerak	<ul style="list-style-type: none"> ● Opening briefing ● Onsite inspection of smallholder estate and interview with the member ● Informal inform audit results
CS + PN + OP		12.00-13.00		Lunch break
CS		13.00-14.00	Mr. Sophon Chaipong	<ul style="list-style-type: none"> ● Opening briefing ● Onsite inspection of smallholder estate and interview with the member ● Informal inform audit results
CS		14.00-15.00	Mrs. Chanthanee Sriworadejpaisan	<ul style="list-style-type: none"> ● Opening briefing ● Onsite inspection of smallholder estate and interview with the member ● Informal inform audit results
CS		15.00-16.00	Mr. Cong Chophthamkij	<ul style="list-style-type: none"> ● Opening briefing ● Onsite inspection of smallholder estate and interview with the member ● Informal inform audit results
CS		16.00-17.00	Mr Sunan Sungrod	<ul style="list-style-type: none"> ● Opening briefing ● Onsite inspection of smallholder estate and interview with the member ● Informal inform audit results
PN + OP		13.00-14.00	Mr Chun Aengchuan	<ul style="list-style-type: none"> ● Opening briefing ● Onsite inspection of smallholder estate and interview with the member ● Informal inform audit results
PN + OP		14.00-15.00	Mr Witoon Srisawat	<ul style="list-style-type: none"> ● Opening briefing ● Onsite inspection of smallholder estate and interview with the member ● Informal inform audit results
PN + OP		15.00-16.00	Mrs Pikul Muangkerd	<ul style="list-style-type: none"> ● Opening briefing ● Onsite inspection of smallholder estate and interview with the member ● Informal inform audit results



PN + OP		16.00-17.00	Mrs Rane Kongpol	<ul style="list-style-type: none"> ● Opening briefing ● Onsite inspection of smallholder estate and interview with the member ● Informal inform audit results
		17.00		End of day 1
Day 3 (27.10.2016)				
CS	27.10.2016	09.00-10.30	Mrs Nantalak Buatom	<ul style="list-style-type: none"> ● Opening briefing ● Onsite inspection of smallholder estate and interview with the member ● Informal inform audit results
CS		10.30-12.00	Mr Satit Seeluang	<ul style="list-style-type: none"> ● Opening briefing ● Onsite inspection of smallholder estate and interview with the member ● Informal inform audit results
PN + OP		09.00-10.00	Mrs Arporn Nakfon	<ul style="list-style-type: none"> ● Opening briefing ● Onsite inspection of smallholder estate and interview with the member ● Informal inform audit results
PN + OP		10.00-11.00	Mr Winai Yemhom	<ul style="list-style-type: none"> ● Opening briefing ● Onsite inspection of smallholder estate and interview with the member ● Informal inform audit results
PN + OP		11.00-12.00	Mr Anurak Samakkaew	<ul style="list-style-type: none"> ● Opening briefing ● Onsite inspection of smallholder estate and interview with the member ● Informal inform audit results
CS + PN + OP		12.00-13.00		Lunch break
PN + OP		13.00-14.00	Mr. Boonlit Chamnankij	<ul style="list-style-type: none"> ● Opening briefing ● Onsite inspection of smallholder estate and interview with the member ● Informal inform audit results
PN + OP		14.00-15.00	Mr. Prasit Songrod	<ul style="list-style-type: none"> ● Opening briefing ● Onsite inspection of smallholder estate and interview with the member ● Informal inform audit results
CS (PN+OP will join on 15.00)		13.00-16.00	Group administration office	<ul style="list-style-type: none"> ● Group certification standard ● Group requirement (Group elements, compliance with standards, group manager) ● Group management document and requirements (Group management structure and content, internal assessment system) ● Chain of custody
		16.00-16.30		Auditor meeting
CS + PN + OP		16.30-17.00	Group administration office	Closing meeting
		17.00		End of audit

Details of Non-Conformity and Corrective Actions Taken

NCR No.	: UPOIC/CS1ASA4/01	Date of issuance	: 27/10/2016
Grade	: Major/Minor	Type of assessment	: ASA1
Implementation deadline : 27 December 2016			
Requirements RSPO P&C Indicator 6.7.1			
Non Conformity Description of objective evidence:			
All group members who were randomly selected for the assessment employed the subcontractors, however, there is no evidence and monitoring system to show children are not employed and exploited			
Root Cause Analysis			
Even though group has informed all group members to maintain the list of subcontractors with ID card, there is no monitoring program of the ID cards to ensure that the group policy on child labor are implemented properly			
Correction (if applicable)			
ID card of each subcontractor hired by all group members who could not show those information during the assessment have now maintained by the group committee in order to prevent the loss of the information. Hard copy of ID card was also converted into electronic file and was kept in the flash drive as double prevention measure for the loss of the file.			
Corrective action			
Group committee who responsible to take care group members in their own area was assigned to monitor the availability of ID card of each subcontractor hired by the group member. The monitoring program signed by the group manager on 26 December 2016 showed that availability of ID card of subcontractor hired by all group members is required to conduct monthly. The latest monitoring for those group members who could not show ID card of subcontractor was carried out on 21 December 2016.			
Verification of corrective actions			
Group has set the monitoring program to ensure that ID card for each subcontractor is available for not only group members who could not show evidence of no child labor was employed but also all group members. Group committee was assigned by the group manager to responsible to follow up ID card and maintain the information in both forms; hard copy and electronic file. For those group members who could not show the ID card of subcontractor, the group committee carried out to monitor and maintain the list of subcontractor with their ID card on 21 December 2016. Based on the group's monitoring program signed by group manager on 26 December 2016, the monitoring the availability of ID card of subcontractor will be done on monthly basis			
Status	: Open /Closed by Dr Chaiyaporn Seekao	Date of closure	: 27 December 2016



NCR No.	: UPOIC/CS1ASA4/02	Date of issuance	: 27/10/2016
Grade	: Major/Minor	Type of assessment	: ASA1
Implementation deadline : 27 December 2017			
Requirements RSPO Group Certification 2.1.2			
Non Conformity Description of objective evidence:			
<p>Assessment report used to carry out for prospective members before becoming formal members since 2012 e.g. Mr Sanan Sangrod is not available to support the procedure written in sustainability manual that all records shall be retained for at least 5 years. From the previous assessment conducted by previous CB (TUV NORD Integra), minor non-conformity was already raised. Therefore, this non-conformity will be escalated to major non-conformity</p>			
Root Cause Analysis			
<p>Even though assessment report conducted at plot owned by Mr Sanan Sangrot was kept in personal file, it was lost from the file</p>			
Correction (if applicable)			
<p>Group committee (Mr Khern Kaewkhao) who responsible to take care Mr Sanan Sangrod was assigned to execute the assessment whether his operation is in compliance with RSPO P&C requirements. The assessment was carried out on 16 November 2016. The assessment report conducted on 16 November 2016 is now kept in the file and lockable</p>			
Corrective action			
<p>Information from those hard copy sources were converted into electronic files and were kept in the flash drive. Electronic files saved in the flash drive were kept in the group. Moreover, each group committee who responsible to take care members in their own area are assigned to keep the flash drive.</p>			
Verification of corrective actions			
<p>Not only personal information of group members were kept in their personal file, those information was now converted into the electronic file and saved in the flash drive. Therefore, there are three sources that can retrieve the information of each group member. To deal with the absence information of the assessment report for plot owned by Mr Sanan, group has conducted the new assessment to ensure that his operation is in compliance with RSPO P&C requirements</p>			
Status	: Open/Closed by Dr Chaiyaporn Seekao	Date of closure	: 27 December 2016



NCR No.	: UPOIC/CS1ASA4/03	Date of issuance	: 27/10/2016
Grade	: Major/Minor	Type of assessment	: ASA1
Implementation deadline : 27 December 2016			
Requirements RSPO Group Certification 2.1.5.2			
Non Conformity Description of objective evidence:			
<p>Since the planted area recorded in the database of the group is incorrect, moreover, the group has not estimated FFB production for the current year. Even though major non-conformity against this clause was raised by previous CB, the finding caused the non-conformity was not related to above-mentioned finding. Therefore, major non-conformity was still raised</p>			
Root Cause Analysis			
<p>Group's database was carried out by using excel file. However, some information relating to planted area filled in the excel file was incompletely corrected when comparing the consequence from onsite inspection. When using the auto sum to calculate the total planted areas of the group, the result would be wrong. Moreover, group has no scientific or official reference of provincial average FFB production to be used as the baseline for estimation of the total FFB production of the group</p>			
Correction (if applicable)			
<p>All information related to the planted area of each group member has now been revised according to the consequence from the onsite inspection done by external auditor and internal auditor. To obtain the official reference of provincial FFB production, group manager contacted to Krabi Provincial Agriculture Office for obtaining such information. Based on the official letter given by Krabi Provincial Agriculture Office confirmed that the estimated FFB production in 2017 would be 3.38 tons/rai/year or equal to 21.12 tons/ha/year. Therefore, the estimated FFB production in the current year would be 37,421 tons/ha/year</p>			
Corrective action			
<p>Group manager has assigned the group committee (Mrs Penprapa) to verify the group's database after database officer finished filling the information, to prevent the reoccurrence of the same problem. The latest verification done by Mrs Penprapa was on 26 December 2016. With regards to the average FFB production in the province, group manager will be responsible to contact to Krabi Provincial Agriculture Office to obtain such information for estimating the FFB production in the next year</p>			
Verification of corrective actions			
<p>Group has now corrected the information related to the planted area before estimating the FFB production. Not only group database will be handling with the database, but also group committee (Mrs Penprapa) was assigned to verify the accuracy and completeness of the database. To estimate the FFB production for the current year, group has contacted to Krabi Provincial Agriculture Office for average FFB production. Then, this information given by Krabi Provincial Agriculture Office where is local competent authority was used to estimate the FFB production for the current year</p>			
Status	: Open/Closed by Dr Chaiyaporn Seekao	Date of closure	: 27 December 2016



NCR No.	: UPOIC/CS1ASA4/04	Date of issuance	: 27/10/2016
Grade	: Major/Minor	Type of assessment	: ASA1
Implementation deadline : 27 December 2016			
Requirements	RSPO Group Certification 2.1.5.4		
Non Conformity Description of objective evidence:			
<p>In the database, date of departure or expulsion for those 12 group members is not recorded in the database of the group. Even though major non-conformity against this clause was raised by previous CB, the finding caused the non-conformity was not related to above-mentioned finding. Therefore, major non-conformity was still raised</p>			
Root Cause Analysis			
<p>Group misunderstood that when group members have left from the group with any reasons, all information related to those group members is required to remove from the database of the group</p>			
Correction (if applicable)			
<p>Date of departure or expulsion is now included in the group database. For information related to those 12 group members especially date of departure, it has been recalled and added into the group database. This implementation was carried out on 25 December 2016.</p>			
Corrective action			
<p>To prevent the reoccurrence of the same non-conformity, group manager has assigned the group committee (Mrs Penprapa) to verify the group's database. Checklist that will be used to check all elements of the database required by RSPO group certification was established. The latest verification by using this checklist done by Mrs Penprapa was on 26 December 2016. Moreover, group provided the training to group database, group committee (Mrs Penprapa) and other committees how to record not only date of departure but also other elements accordingly on 29 November 2016</p>			
Verification of corrective actions			
<p>Group has revised the database by including the date of departure or expulsion for those 12 group members who have resigned and sacked by the group. To prevent the reoccurrence of the same problem, group has assigned another person (group committee Mrs Penprapa) to monitor the database filled by the database officer. Moreover, group has given the training to those relevant group committees</p>			
Status	: Open/Closed by Dr Chaiyaporn Seekao	Date of closure	: 27 December 2016



NCR No.	: UPOIC/CS1ASA4/05	Date of issuance	: 27/10/2016
Grade	: Major/Minor	Type of assessment	: ASA1
Implementation deadline : 26 December 2016			
Requirements RSPO Group Certification 2.1.5.5			
Non Conformity Description of objective evidence:			
<p>Maps of the plantation area especially for those group members who were joined the group since 2012 recorded in the group were not consistency with the actual crosscheck during the on-site audit. Even though major non-conformity against this clause was raised by previous CB, the finding caused the non-conformity was not related to above-mentioned finding. Therefore, major non-conformity was still raised</p>			
Root Cause Analysis			
<p>Maps produced for some group members who were selected for this surveillance audit were carried out by previous farm advisor who was lack of the knowledge to use GPS and making a map in GIS system since 2012 (year of initial certification). Moreover, there is no system to check the accuracy of the map. Therefore, all maps produced by previous farm advisor were totally incorrtced.</p>			
Correction (if applicable)			
<p>Since previous farm advisor has resigned in the last year, the retraining to this farm advisor cannot be organized. However, group has re-produced new maps by group committee instead using GPS to delineate the maps for those group members who were joined the group since 2012. To ensure that map was produced correctly, land legal boundary indicated in the land deed was used during the survey to delineate the map. Moreover, map was produced by accompanying with the farm owner of each plot to avoid reoccurrence of the mistake</p>			
Corrective action			
<p>To prevent the reoccurrence of the problem to produce map, land legal boundary indicated in the land deed and accompanying by the farm owner on the plot where map is need to produce are used to delineate the map. Once maps were produced, it was printed and asked the farm owner to endorse the correctness.</p>			
Verification of corrective actions			
<p>Maps for those existing group members who joined the group since 2012 have now reproduced by using GPS. To ensure that maps were produced correctly, land legal boundary indicated in the land deed and accompanying by the farm owner on the plot where map need to be produced were used. Then, farm owners have endorsed the correctness of the map printed from GIS system</p>			
Status	: Open /Closed by Dr Chaiyaporn Seekao	Date of closure	: 27 December 2016



NCR No.	: UPOIC/CS1ASA4/06	Date of issuance	: 27/10/2016
Grade	: Major/Minor	Type of assessment	: ASA1
Implementation deadline : 26 December 2016			
Requirements RSPO Group Certification 2.1.6.2 and 2.1.6.3			
Non Conformity Description of objective evidence:			
<p>Total planted area which will be total certified production area of the group cannot be summarized during the audit because the planted area recorded in the database is incorrect. Even though major non-conformity against this clause was raised by previous CB, the finding caused the non-conformity was not related to above-mentioned finding. Therefore, major non-conformity was still raised</p>			
Root Cause Analysis			
<p>Group's database was carried out by using excel file. However, some information relating to planted area filled in the excel file was incompletely corrected when comparing the consequence from onsite inspection. When using the auto sum to calculate the total planted areas of the group, the result would be wrong.</p>			
Correction (if applicable)			
<p>All information related to the planted area of each group member has now been revised according to the consequence from the onsite inspection done by external auditor and internal auditor. The correction of the database was carried out under the supervision by the group committee who was assigned by the group manager</p>			
Corrective action			
<p>Group manager has assigned the group committee (Mrs Penprapa) to verify the group's database after database officer finished filling the information, to prevent the reoccurrence of the same problem. The latest verification done by Mrs Penprapa was on 26 December 2016.</p>			
Verification of corrective actions			
<p>Group has now corrected the information related to the planted area before estimating the FFB production. Not only group database will be handling with the database, but also group committee (Mrs Penprapa) was assigned to verify the accuracy and completeness of the database.</p>			
Status	: Open/Closed by Dr Chaiyaporn Seekao	Date of closure	: 27 December 2016



Verification on NCRs raised in the Previous Assessment

NCR No.	: 1	Date of issuance	: 7/10/2015
Grade	: Major/Minor	Type of assessment	: ASA3
Implementation deadline	: 7 December 2015		
Requirements	: RSPO P&C Indicator 1.2.1		
Non Conformity Description of objective evidence:			
Documents related to legal issues are not publicly available especially land use right and/or land utilization certificate			
Root Cause Analysis			
This NC was closed by TUV NORD Integra bvba			
Correction (if applicable)			
See details from correction action below			
Corrective action			
Group members may not be aware those management documents need to be ready for publicly disclosure. Copies of the land use right and land utilization certificate of Noppamas, Saichon and Khum are now made for public available when request. Farm advisor has given the refreshment training to these group members on 9 October 2015 and has checked the availability of those management documents especially land use right			
Verification of corrective actions			
Refreshment training was given by farm advisor to those group members who may not be aware important of making management documents for publicly disclosure. Availability of management documents especially land use right of Noppamas, Saichon and Khum were checked by farm advisor to ensure that they are ready for public disclosure			
Status	: Open /Closed/Upgraded by TUV NORD Integra bvba	Date of closure	: 7/12/2015



NCR No.	: 2	Date of issuance	: 7/10/2015
Grade	: Major/Minor	Type of assessment	: ASA3
Implementation deadline : 7 December 2015			
Requirements : RSPO P&C Indicator 3.1.1			
Non Conformity Description of objective evidence:			
There is no evidence showing that annual budgetary of the group was developed under the participation of the group members			
Root Cause Analysis			
This NC was closed by TUV NORD Integra bvba			
Correction (if applicable)			
See details from correction action below			
Corrective action			
Group organized the group meeting among all group members on 6 December 2015 for developing annual budgetary plan of the group. Even though some group members were not able to participate the meeting, they gave authorization to the group manager for decision.			
Verification of corrective actions			
Annual budgetary plan is now developed under the participation of the group members. Even though it is not possible to invite all (211) group members to participate the meeting, some group members who were not able to join the meeting gave the authority of decision to group manager. Annual budgetary, in particular for year 2016, developed by group members convers estimation of economic benefits for the group, budget for accepting new prospective members, budget for expenditures, budgets for training, budget for maintaining the certificate and etc.			
Status	: Open/Closed/Upgraded by TUV NORD Integra bvba	Date of closure	: 7/12/2015



NCR No.	: 3	Date of issuance	: 7/10/2015
Grade	: Major/Minor	Type of assessment	: ASA3
Implementation deadline : 7 December 2015			
Requirements : RSPO P&C Indicator 5.1.1			
Non Conformity Description of objective evidence: There is no documented environmental impact assessment (EIA) developed with the participation of group members and local communities for all plots registered with the group			
Root Cause Analysis This NC was closed by TUV NORD Integra bvba			
Correction (if applicable) See details from correction action below			
Corrective action Plots owned by all new group members who were recently joined the group have been assessed environmental impact caused by their operation by participation of the head of each governmental agency, head of village, local communities and group members. Group has taken this chance to join with the monthly meeting among governmental officers at Khao Panom district and Nue Khlong district held on 3 December 2015 for asking them to assess the environmental impacts at plots owned by new group members. Group members were also participated this meeting for assessing the environmental impact. Results of environmental impact assessment showed that no impacts on environment caused by farm operation.			
Verification of corrective actions Environmental impact assessment was carried out to all new group members who were recently joined the group during November 2015. Local communities were involved in assessing the environmental impact caused by farm operation. Results of the assessment showed that there was no negative impacts caused by farm operation on the environment			
Status	: Open/Closed/Upgraded by TUV NORD Integra bvba	Date of closure	: 7/12/2015



NCR No.	: 4	Date of issuance	: 7/10/2015
Grade	: Major/Minor	Type of assessment	: ASA3
Implementation deadline	: 7 December 2015		
Requirements	: RSPO P&C Indicator 5.2.1		
Non Conformity Description of objective evidence:			
There is no documented HCV assessment for identifying rare, threaten and endanger species and HCV habitat within the boundary of plots that are registered with the group and adjacent areas			
Root Cause Analysis			
This NC was closed by TUV NORD Integra bvba			
Correction (if applicable)			
See details from correction action below			
Corrective action			
HCV assessment for new group members who were recently joined the group has already been conducted by farm advisor during November 2015. HCV assessment was conducted during the monthly meeting among governmental officer at Khao Panom district and Nue Khlong district on 3 December. Results of the assessment especially the presence of rare, threaten and endanger species and HCV habitat within the boundary of plots done by farm advisor were confirmed its accuracy by local communities.			
Verification of corrective actions			
HCV assessment was done by using checklist developed by external parties. HCV assessment was conducted during the monthly meeting among governmental officer at Khao Panom district and Nue Khlong district on 3 December. Moreover, local communities were invited to involve in the HCV assessment. Result of the HCV assessments confirmed that there is no the presence of rare, threaten and endanger species and HCV habitat within the boundary of plots owned by new group members			
Status	: Open /Closed/Upgraded by TUV NORD Integra bvba	Date of closure	: 7/12/2015



NCR No.	: 5	Date of issuance	: 7/10/2015
Grade	: Major/Minor	Type of assessment	: ASA3
Implementation deadline	: 7 December 2015		
Requirements	: RSPO P&C Indicator 6.1.1		
Non Conformity Description of objective evidence:			
There is no evidence of social impact assessment for all plots registered with the group. Moreover, there is no evidence showing that social impact assessment for some plots was conducted under the consultative or participatory meeting among representative of the local community and stakeholders			
Root Cause Analysis			
This NC was closed by TUV NORD Integra bvba			
Correction (if applicable)			
See details from correction action below			
Corrective action			
While conducting the environmental impact assessment during the meeting of governmental officers, social impact assessment was one of the topics discussed and assessed during the meeting among head of each governmental agency, head of village, local communities and group members on 3 December 2015. Moreover, group has also invited local communities to participate the social impact assessment during the meeting. Results of social impact assessment showed that there is no negative social impact caused by palm oil activities			
Verification of corrective actions			
Inspection of the results of social impact assessment conducted by the governmental agencies, head of village, and local communities was consistent with the results obtained from in-depth discussion with stakeholders. Results confirmed that there is no negative impacts on social caused by palm oil activities of new group members			
Status	: Open /Closed/ Upgraded by TUV NORD Integra bvba	Date of closure	: 7/12/2015



NCR No.	: 6	Date of issuance	: 7/10/2015
Grade	: Major/Minor	Type of assessment	: ASA3
Implementation deadline	: 7 December 2015		
Requirements	: RSPO P&C Indicator 8.1.1		
Non Conformity Description of objective evidence:			
There is no continuous improvement plan developed in a participatory manner with the group members and consider on the sustainable economic. Moreover, there is no monitoring plan for the implementation according to the continuous improvement plan especially increase number of beneficial host plant (sage rose) in each plot every year			
Root Cause Analysis			
This NC was closed by TUV NORD Integra bvba			
Correction (if applicable)			
See details from correction action below			
Corrective action			
Group held a meeting on 9 October 2015 for developing a continuous improvement plan with group members. This plan includes economic viability, social responsibility and training enhancement to the group members focusing on best agricultural practices, IPM, HCV, training, replanting how to prevent environmental and social impacts and plan for acceptance new group members. For instance, increase number of IPM is one of the activities in the plan (3 beneficial host plants/year). This plan covers three year (2015-2017). Monitoring plan for the implementation according to the continuous improvement plan was described in the plan. It will be monitored twice a year by farm advisor			
Verification of corrective actions			
The continuous improvement plan was now established among group members through the meeting on 9 October 2015. This plan covers on the three aspects (best management practices, economic and social and environmental aspect). The monitoring program was also established to ensure that all group members were implemented accordingly. Farm advisor is now assigned to monitor the implementation according to the continuous improvement plan			
Status	: Open/Closed/Upgraded by TUV NORD Integra bvba	Date of closure	: 7/12/2015



NCR No.	: 7	Date of issuance	: 7/10/2015
Grade	: Major/Minor	Type of assessment	: ASA3
Implementation deadline	: 7 December 2015		
Requirements	: RSPO Group Certification Standard 1.1.3		
Non Conformity Description of objective evidence:			
Since the responsibility for monitoring of membership status was transferred to farm advisor who was recently employed by the group, however, there is no mechanism to monitor or inform the change that is affect to membership status such as change on land right ownership, change on practice and change on subcontractors employed by the group.			
Root Cause Analysis			
This NC was closed by TUV NORD Integra bvba			
Correction (if applicable)			
See details from correction action below			
Corrective action			
Sustainable manual has been revised to include mechanism to monitor change that affect to membership status. To prevent human mistake while farm advisor has visited the plots owned by group members but didn't report the change, group members were asked to report the change to group manager directly. Another channel to identify and record the change is to hold a yearly meeting among group members. Group member will be asked to monitor the change that affect to membership status			
Verification of corrective actions			
Due to human error of the farm advisor, group has determined two more channels to identify and report the change. These mechanisms can be used to double check changes.			
Status	: Open /Closed/ Upgraded by TUV NORD Integra bvba	Date of closure	: 7/12/2015



NCR No.	: 8	Date of issuance	: 7/10/2015
Grade	: Major/Minor	Type of assessment	: ASA3
Implementation deadline	: 7 December 2015		
Requirements	: RSPO Group Certification Standard 1.2.1		
Non Conformity Description of objective evidence:			
Even though selected new palm growers who have been accepted in the group as a formal member for inclusion in RSPO group certification for third surveillance assessment have been audited prior joining a group by internal auditor, however, not all plots owned by new group member have been audited against RSPO standard for sustainable oil palm production (TH-NI 2012)			
Root Cause Analysis			
This NC was closed by TUV NORD Integra bvba			
Correction (if applicable)			
See details from correction action below			
Corrective action			
Farm advisor who was retrained by external trainer on 14 November 2015. He has responsible to access new group members against RSPO standard for sustainable oil palm production (TH-NI 2012) during November 2015 even though they have been accepted to join the group. Results of the assessment showed that all new group members could implement in compliance with the RSPO standard for sustainable oil palm production (TH-NI 2012). The system to accept new group members was revised in the sustainable manual. New prospective members are required to assess against RSPO requirement before acceptance as formal member.			
Verification of corrective actions			
Before the assessment of new group members, auditor (farm advisor) has been re-trained by qualified trainer on 14 November 2015. Results of the assessment confirmed that all group members could implement in compliance with the standard. Moreover, the system to accept new group member was changed and revised in the sustainable manual			
Status	: Open /Closed/Upgraded by TUV NORD Integra bvba	Date of closure	: 7/12/2015



NCR No.	: 9	Date of issuance	: 7/10/2015
Grade	: Major/Minor	Type of assessment	: ASA3
Implementation deadline : 7 December 2015			
Requirements : RSPO Group Certification Standard 1.3.7			
Non Conformity Description of objective evidence: Reality, only group manager could not control, monitor and evaluate all members. Therefore, group manager assigned farm advisor and manager of each sub-group to control, monitor, visit and evaluate all group members. However, there is no explicit system for this assignment			
Root Cause Analysis This NC was closed by TUV NORD Integra bvba			
Correction (if applicable) See details from correction action below			
Corrective action Even though farm advisor who was fully employed by the group has responsible to visit and audit group members, this activity has never been recorded and proved that he did. Group has determined the monthly plan for visiting and evaluating all group members for farm advisor in order to monitor the task carried out by farm advisor.			
Verification of corrective actions Group has set the system to monitor the implementation carried out by farm advisor especially visiting and evaluating plots owned by group members. Farm advisor who is under the control by group manager will be assigned to visit and audit group members monthly. Number of group members who are required to visit is about 15-20 members per month			
Status	: Open/Closed/Upgraded by TUV NORD Integra bvba	Date of closure	: 7/12/2015



NCR No.	: 10	Date of issuance	: 7/10/2015
Grade	: Major/Minor	Type of assessment	: ASA3
Implementation deadline : 7 December 2015			
Requirements : RSPO Group Certification Standard 2.1.2			
Non Conformity Description of objective evidence: Some records of existing group members are not available during the assessment such as pre-assessment result, EIA, SIA, HCV. Therefore, group could not demonstrate that all relevant records are kept at least 5 years.			
Root Cause Analysis This NC was closed by TUV NORD Integra bvba			
Correction (if applicable) See details from correction action below			
Corrective action Because of some documents were lost with the former farm advisor who was recently resigned from the group, group set the system to retain documents at the group. It is responsible of the group committee to crosscheck the availability of the documents. For those documents lost especially EIA, SIA and HCV for some group members, group has done the reassessment during November 2015.			
Verification of corrective actions New farm advisor who was recently joined the group have carried out the re-assessment of EIA, SIA and HCV for some group members who lost the documents. Group has revised the system to retain the documents even though farm advisor may no longer with the group. All documents will be kept at the group and will be checked by group committee.			
Status	: Open /Closed/ Upgraded -by TUV NORD Integra bvba	Date of closure	: 7/12/2015



NCR No.	: 11	Date of issuance	: 7/10/2015
Grade	: Major/Minor	Type of assessment	: ASA3
Implementation deadline : 7 December 2015			
Requirements : RSPO Group Certification Standard 2.1.4.3			
Non Conformity Description of objective evidence: Even though procedure for applying any CARs issued by external and internal audit is written in the manual Kor Yor Por-001, but there is no evidence showing that CARs was applied to group members			
Root Cause Analysis This NC was closed by TUV NORD Integra bvba			
Correction (if applicable) See details from correction action below			
Corrective action Due to human error of farm advisor, group has given the instruction and refreshment training to farm advisor on how to deal with the results of internal audit. He has been trained on 14 November 2015. To communicate regarding CARs issued by both internal and external audit, its results of audit are now posted on the group's board. Moreover, all group members were informed using application "Line".			
Verification of corrective actions Group investigated the root cause of the problem and corrected accordingly. Farm advisor has been given the refreshment training on his tasks including communicating CARs to group members. Now, the results of the internal and external audit were communicated through group board and application "Line".			
Status	: Open/Closed/Upgraded by TUV NORD Integra bvba	Date of closure	: 7/12/2015



NCR No.	: 12	Date of issuance	: 7/10/2015
Grade	: Major/Minor	Type of assessment	: ASA3
Implementation deadline : 7 December 2015			
Requirements : RSPO Group Certification Standard 2.1.5.2			
<p>Non Conformity Description of objective evidence: The previous FFB production since August 2014 till to date was not recorded in the database of the group for both existing member and new members</p> <p>With regard to new members, there is no data of FFB production of new group members since previous year prior to joining with the group.</p>			
<p>Root Cause Analysis This NC was closed by TUV NORD Integra bvba</p>			
<p>Correction (if applicable) See details from correction action below</p>			
<p>Corrective action Because of the new group members have never kept the record of FFB production before joining the group, therefore, procedure has been revised to deal with this case. Since prospective members applied to the group but not accepted as formal members, group has ordered them to collect and record FFB production. Farm advisor will responsible to collect FFB production and will record in the database of the group</p>			
<p>Verification of corrective actions Group has revised their procedure to handle with new group members for recording previous FFB production before joining with the group. This system is now used to apply since the first date of applying by prospective members. For those new group members, farm advisor has collected the FFB</p>			
Status	: Open/Closed/Upgraded by TUV NORD Integra bvba	Date of closure	: 7/12/2015



NCR No.	: 13	Date of issuance	: 7/10/2015
Grade	: Major/ Minor	Type of assessment	: ASA3
Implementation deadline : 7 December 2015			
Requirements : RSPO Group Certification Standard 2.1.5.3			
Non Conformity Description of objective evidence: No database showing the performance levels to the relevant RSPO Standard for Sustainable Oil Palm Production resulted from the internal and external assessment			
Root Cause Analysis This NC was closed by TUV NORD Integra bvba			
Correction (if applicable) See details from correction action below			
Corrective action Database of the group has been revised to show the performance levels of each group members resulting from internal and external audit. For instance, there was no non-conformity raised to Mrs.Ampa Kongpat who was audited internally on 15 July 2014			
Verification of corrective actions Group has revised their database containing the results of the internal and external audit for each group member. Date of closing non-conformity (if any) was also included in the database of the group			
Status	: Open /Closed/Upgraded by TUV NORD Integra bvba	Date of closure	: 7/12/2015



NCR No.	: 14	Date of issuance	: 7/10/2015
Grade	: Major/Minor	Type of assessment	: ASA3
Implementation deadline	: 7 December 2015		
Requirements	: RSPO Group Certification Standard 2.1.5.4		
Non Conformity Description of objective evidence:			
In the database, dates of group membership acceptance (after completion of the internal assessment) are not recorded in the database			
Dates of departure for two formal members (Khun Thanakorn Aengchon and Khun Nattawan Aengchon) who have resigned from the group on 23.8.2015 and 10.7.2015 were also not recorded in the database			
Root Cause Analysis			
This NC was closed by TUV NORD Integra bvba			
Correction (if applicable)			
See details from correction action below			
Corrective action			
Currently, date of departure for existing group members and new group members (if any) has included in the database of the group. Former members (Khun Thanakorn Aengchon and Khun Nattawan Aengchon) who recently left the group were marked in the part of departure of the database			
Verification of corrective actions			
Group has revised the database by including date of departure for formal members and new group members (if any in the future)			
Status	: Open/Closed/Upgraded by	Date of closure	: 7/12/2015
	TUV NORD Integra bvba		



NCR No.	: 15	Date of issuance	: 7/10/2015
Grade	: Major/Minor	Type of assessment	: ASA3
Implementation deadline	: 7 December 2015		
Requirements	: RSPO Group Certification Standard 2.1.5.5		
Non Conformity Description of objective evidence:			
Map of the plantation area especially for new group members have not been carried out			
Root Cause Analysis			
This NC was closed by TUV NORD Integra bvba			
Correction (if applicable)			
See details from correction action below			
Corrective action			
Map of each plot owned by new group member was generated using GPS borrowed from the governmental agency. Boundary of land indicated in the land deed was also used to crosscheck the accuracy of the map generated by using GPS.			
Verification of corrective actions			
Map of plots owned by new group members are now developed using GPS. The accuracy of the map was crosschecked by using boundary of land indicated in the land deed.			
Status	: Open/Closed/Upgraded by TUV NORD Integra bvba	Date of closure	: 7/12/2015



NCR No.	: 16	Date of issuance	: 7/10/2015
Grade	: Major/Minor	Type of assessment	: ASA3
Implementation deadline	: 7 December 2015		
Requirements	: RSPO Group Certification Standard 2.1.6.1		
Non Conformity Description of objective evidence:			
Total land area of the group cannot be summarized especially existing group members due to incomplete of the database			
Root Cause Analysis			
This NC was closed by TUV NORD Integra bvba			
Correction (if applicable)			
See details from correction action below			
Corrective action			
Total land area of the group especially existing group members and new group members were adopted from the total land area indicated in the land deeds and land use rights. Total land area of the group from crosschecking from the land deeds is 11,030.5 rai or 1,764.88 ha			
Verification of corrective actions			
Total land area of the group was determined using the total land right indicated in the land deeds. The summation of the total land area of the group is 1,764.88 ha			
Status	: Open /Closed/Upgraded by TUV NORD Integra bvba	Date of closure	: 7/12/2015



NCR No.	: 17	Date of issuance	: 7/10/2015
Grade	: Major/Minor	Type of assessment	: ASA3
Implementation deadline : 7 December 2015			
Requirements : RSPO Group Certification Standard 2.1.6.2			
Non Conformity Description of objective evidence: Total planted area of the group cannot be summarized because some group members have never been inspected to determine how many ha of the planted area after deduction with other crop production area, undeveloped area, as well as infrastructure areas			
Root Cause Analysis This NC was closed by TUV NORD Integra bvba			
Correction (if applicable) See details from correction action below			
Corrective action Total planted area of the group was the result from the internal assessment and/or when deducting from other land areas. Total planted area of the group is 10,733 rai or 1,717 ha			
Verification of corrective actions Total planted area of the group was identified from the field assessment to deduct with other land areas. The summation of the total planted area of the group is 1,717 ha			
Status	: Open /Closed/Upgraded by TUV NORD Integra bvba	Date of closure	: 7/12/2015



NCR No.	: 18	Date of issuance	: 7/10/2015
Grade	: Major/Minor	Type of assessment	: ASA3
Implementation deadline	: 7 December 2015		
Requirements	: RSPO Group Certification Standard 2.1.6.3		
Non Conformity Description of objective evidence:			
Total planted area of the group cannot be summarized because some group members have never been inspected to determine how many ha of the planted area after deduction with other crop production area, undeveloped area, as well as infrastructure areas			
Root Cause Analysis			
This NC was closed by TUV NORD Integra bvba			
Correction (if applicable)			
See details from correction action below			
Corrective action			
The correction is exactly the same with the correction indicated in NC # 11. This total planted area will be used as RSPO certified production area of the group			
Verification of corrective actions			
Based on the above mentioned in NC # 11, the total RSPO certified production area is 1,717 ha			
Status	: Open /Closed/Upgraded by TUV NORD Integra bvba	Date of closure	: 7/12/2015



NCR No.	: 19	Date of issuance	: 7/10/2015
Grade	: Major/Minor	Type of assessment	: ASA3
Implementation deadline	: 7 December 2015		
Requirements	: RSPO Group Certification Standard 2.1.6.4		
Non Conformity Description of objective evidence:			
Other crop production areas were not recorded in the database especially for existing formal members			
Root Cause Analysis			
This NC was closed by TUV NORD Integra bvba			
Correction (if applicable)			
See details from correction action below			
Corrective action			
Other crop production areas resulting from the survey by farm advisor during November 2015 showed that beside palm oil plantation, most group members also planted rubber tree. Total land area of rubber tree is 186 rai or 29.76 ha			
Verification of corrective actions			
Farm advisor has done the survey during November 2015 to identify total other crop production area that may be planted by the group members. Result showed that only rubber tree was planted by most of group members. Total land area of rubber production is 29.76 ha			
Status	: Open /Closed/Upgraded by TUV NORD Integra bvba	Date of closure	: 7/12/2015



NCR No.	: 20	Date of issuance	: 7/10/2015
Grade	: Major/Minor	Type of assessment	: ASA3
Implementation deadline : 7 December 2015			
Requirements : RSPO Group Certification Standard 2.1.6.5			
Non Conformity Description of objective evidence:			
Undeveloped area or HCV area were not recorded in the database			
Root Cause Analysis			
This NC was closed by TUV NORD Integra bvba			
Correction (if applicable)			
See details from correction action below			
Corrective action			
Based on the HCV assessment report and survey that carried out by farm advisor, it showed that there is no HCV area, but 4.96 ha of undeveloped area was found and recorded in the database			
Verification of corrective actions			
Group has determined the total undeveloped area and HCV area based on the result from HCV assessment and survey. Results showed that there is no HCV area that needs to be recorded in the database of the group. Only undeveloped area of 4.96 ha is recorded in the database			
Status	: Open /Closed/ Upgraded by TUV NORD Integra bvba	Date of closure	: 7/12/2015



NCR No.	: 21	Date of issuance	: 7/10/2015
Grade	: Major/Minor	Type of assessment	: ASA3
Implementation deadline : 7 December 2015			
Requirements : RSPO Group Certification Standard 2.1.6.6			
Non Conformity Description of objective evidence:			
Based on the result of survey, total infrastructure area (housing area) is 13.16 ha			
Root Cause Analysis			
This NC was closed by TUV NORD Integra bvba			
Correction (if applicable)			
See details from correction action below			
Corrective action			
Based on the result of survey, total infrastructure area (housing area) is 13.16 ha			
Verification of corrective actions			
Total infrastructure area (housing area) was a result from the survey done by farm advisor. Total infrastructure area of the group is 13.16 ha			
Status	: Open/Closed/Upgraded by TUV NORD Integra bvba	Date of closure	: 7/12/2015



NCR No.	: 22	Date of issuance	: 7/10/2015
Grade	: Major/Minor	Type of assessment	: ASA3
Implementation deadline : 7 December 2015			
Requirements : RSPO Group Certification Standard 2.2.1			
Non Conformity Description of objective evidence: Not all plots owned by new group member (Sujitra) have been audited against RSPO standard for sustainable oil palm production (TH-NI 2012) to check the compliance with the relevant RSPO standard before becoming formal member of the group			
Root Cause Analysis This NC was closed by TUV NORD Integra bvba			
Correction (if applicable) See details from correction action below			
Corrective action The group has reviewed and revised the sequence of steps for joining the group and before becoming formal members. All prospective members who are recently joined with the group and seeking RSPO certification under group certification shall be assessed against relevant RSPO P&C for smallholder requirements and group's requirement as the final step. If the result of assessment is satisfied, they can become formal members of the group. From this consequence, for new group members, they were assessed by farm advisor against RSPO standard for sustainable oil palm production (TH-NI 2012)			
Verification of corrective actions			



Procedure for acceptance new formal members has been revised. All prospective members are required to assess against RSPO standard for sustainable oil palm production (TH-NI 2012) before becoming formal member. Now, all new group members were re-assessed against RSPO standard for smallholder.

Status	: Open/Closed/Upgraded by TUV NORD Integra bvba	Date of closure	: 7/12/2015
--------	--	-----------------	-------------

NCR No.	: 23	Date of issuance	: 7/10/2015
Grade	: Major/Minor	Type of assessment	: ASA3
Implementation deadline	: 7 December 2015		
Requirements	: RSPO Group Certification Standard 2.2.2.2		
Non Conformity Description of objective evidence:			
There is no mechanism to monitor which group members were assessed against RSPO requirement to ensure that all group members will be monitored at least once during the period of validity of the group certificate especially when sample size was determined using the recommended formula			
Root Cause Analysis			
This NC was closed by TUV NORD Integra bvba			
Correction (if applicable)			
See details from correction action below			
Corrective action			
Name of group members who have been assessed internally and externally by CB was listed in the database of the group. Moreover, assessment date of prospective members before accepting as new formal members is also indicated in the database. Type of the assessment was also marked in the database whether year 1, year 2, year 3 and etc.			
Verification of corrective actions			



Group was created the database for monitoring which group members have been audited in which year. This system can be used to select group members for the next internal audit	
Status	: Open/Closed/Upgraded by TUV NORD Integra bvba
Date of closure	: 7/12/2015

NCR No.	: 24	Date of issuance	: 7/10/2015
Grade	: Major/Minor	Type of assessment	: ASA3
Implementation deadline	: 7 December 2015		
Requirements	: RSPO Group Certification Standard 2.2.2.7		
Non Conformity Description of objective evidence:			
Due to no database of visited group members, there is no mechanism to ensure that different group members were selected and visited in latest internal assessment			
Root Cause Analysis			
This NC was closed by TUV NORD Integra bvba			
Correction (if applicable)			
See details from correction action below			
Corrective action			
Based on the above mentioned in NC # 17, the database is now created to ensure that different group members will be selected and visited in latest internal assessment			
Verification of corrective actions			



Database indicated in NC # 17 can be used to identify the difference group members for the next internal assessment	
Status	: Open /Closed/ Upgraded by TUV NORD Integra bvba
Date of closure	: 7/12/2015

NCR No.	: 25	Date of issuance	: 7/10/2015
Grade	: Major/ Minor	Type of assessment	: ASA3
Implementation deadline	: 7 December 2015		
Requirements	: RSPO Group Certification Standard 2.2.2.8		
Non Conformity Description of objective evidence:			
Mechanism for additional internal assessment when require is not established even though there is no potential problems raised during the stakeholder consultation meeting on 5 October 2015			
Root Cause Analysis			
This NC was closed by TUV NORD Integra bvba			
Correction (if applicable)			
See details from correction action below			
Corrective action			
Sustainable procedure has been revised to contain the special audit (additional assessment) when require such as complaint raised by local community. This procedure is linked with the communication and complaint handling procedure for further investigation onsite.			



Verification of corrective actions	
Group has revised the sustainable procedure to include the additional assessment. Not only result from complaint raised by others but also result from openly communication will be taken into account for onsite investigation at plot owned by group members	
Status	: Open/Closed/Upgraded by TUV NORD Integra bvba
Date of closure	: 7/12/2015

NCR No.	: 26	Date of issuance	: 7/10/2015
Grade	: Major/Minor	Type of assessment	: ASA3
Implementation deadline	: 7 December 2015		
Requirements	: RSPO Group Certification Standard 2.2.4.1		
Non Conformity Description of objective evidence:			
Quality of the internal assessment conducted by internal auditors of the group was not fully met with the requirement of the standard as details given follows:			
<ul style="list-style-type: none"> - There are no training record showing that internal auditor (Sophon Chaipong) have been trained on RSPO requirement and internal audit - Planning for the internal assessment was not taken the list of visited group members from the previous internal assessments in the last 3 years - Assessment reports were not written evidence/finding observed during the internal assessment to support judgement for giving either non-conformity or conformity 			
Root Cause Analysis			
This NC was closed by TUV NORD Integra bvba			
Correction (if applicable)			



See details from correction action below	
Corrective action	
Following are corrective actions undertaken by the group: <ul style="list-style-type: none"> - Not only Sophon Chaipong but also other group committee and group members were attended the refreshment training on RSPO group certification and RSPO P&C for smallholder given by external trainer from Prince of Songkhla University on 14 November 2015 - Based on the database of the group for ensuring that different group members were selected and visited in latest internal assessment, the system for planning and selecting group members for the next internal assessment will be used. - For those new group members who had to be assessed by farm advisor for closing non-conformity, group has taken this chance to monitor the reporting skill of the farm advisor. Based on the audit report done by farm advisor, evidence and/or finding was given properly especially the reason why some indicators are marked NA 	
Verification of corrective actions	
Group has undertaken following to close this non-conformity on the performance of the internal auditor: <ul style="list-style-type: none"> - Not only internal auditor but also other group committee and group members were trained by qualified trainer from Prince of Songkhla University on 14 November 2015 - Group has set the system to monitor which group members were chosen for the internal assessment through the database of the group. - Group has taken the chance to assess new group member to verify the performance of internal auditor (farm advisor) for reporting. Audit report written by farm advisor showed that all finding were supported with the objective evidences 	
Status	: Open /Closed/Upgraded by TUV NORD Integra bvba
Date of closure	: 7/12/2015

NCR No.	: 27	Date of issuance	: 7/10/2015
Grade	: Major/Minor	Type of assessment	: ASA3
Implementation deadline	: 7 December 2015		
Requirements	: RSPO Group Certification Standard 2.2.4.2		
Non Conformity Description of objective evidence:			
No evidence showing that internal auditor (Mr Krit) who conducted the assessment against group certification standard has been trained or has sufficient knowledge on the requirement of RSPO standard and internal audit techniques.			
Root Cause Analysis			
This NC was closed by TUV NORD Integra bvba			
Correction (if applicable)			
See details from correction action below			
Corrective action			



Not only Mr Krit but also other group committee and group members were attended the refreshment training on RSPO group certification and RSPO P&C for smallholder given by external trainer from Prince of Songkhla University on 14 November 2015

Verification of corrective actions

Not only internal auditor who did the audit against group certification standard but also other group committee and group members were trained by qualified trainer from Prince of Songkhla University on 14 November 2015

Status	:	Open /Closed/ Upgraded by TUV NORD Integra bvba	Date of closure	:	7/12/2015
--------	---	--	-----------------	---	-----------