

20th December 2023

Dear Sir/Madam,

STAKEHOLDER CONSULTATION INVITATION TO COMMENT ON RSPO (P&C) INITIAL AUDIT

We are pleased to invite you to provide comments in the stakeholder consultation meeting.

KLK Sawit Nusantara Berhad – Desa Talisai Palm Oil Mill, has applied to Global Gateway Certifications Sdn Bhd to carryout initial activities in accordance with the Roundtable on Sustainable Palm Oil (RSPO P&C) standards.

The standards that shall be applied in the assessment are as below;

- RSPO Principle & Criteria Certification (RSPO P&C 2018) – Malaysia National Interpretation (MYNI) Nov 2019 – [Mass Balance (MB)]

As scheduled, the initial assessment will be carried out on **29th January – 2nd February 2024**. You are cordially invited to send any comments if applicable within the period from now until the closing meeting on the last day of the assessment.

Applicant	KLK Sawit Nusantara Berhad – Desa Talisai Palm Oil Mill
RSPO Membership	1-0014-04-000-00
RSPO Palmtrace (RSPO PO_ID)	RSPO_PO1000003789

Contact details	<p>Mr. Thien Jing Wen jw.thien@klk.com.my</p> <p>Tel : 605) 2417 844 Address: Batu 42, Jalan Tawau-Semporna, Beg Berkunci No. 3, 91009 Tawau, Sabah, Malaysia</p>
------------------------	--

Brief business information of applicant	<p>Kuala Lumpur Kepong Berhad (“KLK”) is a company incorporated in Malaysia and listed on the Main Market of Bursa Malaysia Securities Berhad with a market capitalisation of approximately RM22.318 billion at the end of September 2022. KLK is amongst the largest plantation companies in Malaysia, with a land bank of close to 300,000 hectares, spread across Malaysia (Peninsular and Sabah), Indonesia (Belitung Island, Sumatra, Kalimantan) and Liberia.</p> <p>From the RaCP Tracker record, the KLK Desa Talisai Complex does not have the New Planting Procedure (NPP) and Remediation and Compensation Plan (RaCP) process that is running with the RSPO.</p>
--	--



PALM OIL MILL (POM) FOR THIS ASSESSMENT

Name of Palm Oil Mill	Mill Capacity	Supply Chain Model	Location	GPS reference		Forecasted Annual output (MT)	
(POM)	MT/HR		Address	Longitude	Latitude	CPO	Palm Kernel
Desa Talisai POM	60	MB	Mile 54, Jalan Sandakan-Telupid, Labuk Sugut, Sabah.	117.5339	5.7067	44,402	10,844

SUPPLY BASE OF FFB TO THE ABOVE POM TO BE INCLUDED IN THIS ASSESSMENT

Owned Oil Palm Plantation / Association	Address	GPS reference		Area Summary (Ha)		Annual FFB Production (MT)
		Longitude	Latitude	Total	Planted	
Sijas Estate	KM 12.5, Jalan Beluran, Labuk Sugut, Sabah	117.5750	5.7938	1013.00	948.05	23,780
Desa Talisai South Estate	Mile 54, Jalan Sandakan-Telupid, Labuk Sugut, Sabah.	117.5228	5.7077	1678.52	1,540.19	43,234
Desa Talisai North Estate	Mile 54, Jalan Sandakan-Telupid, Labuk Sugut, Sabah.	117.5189	5.7489	2418.00	2,344.84	61,902
Meliau Estate	KM 89, Jalan Telupid - Kota Kinabalu, Labuk Sugut, Sabah	117.1797	5.7948	2263.30	1,165.15	24,988
TOTAL				7,372.82	5,998.23	153,904

Stakeholder consultation is one of the most important parts in certification process; during which relevant national, regional as well as local stakeholders are asked to give their views and opinions as to whether the applicant's certification units comply with the requirements of the RSPO's requirements.

We invite all stakeholders to take part in this consultation process as you can make a positive contribution to the certification decision. We invite you to raise any issues, both positive and negative, by sending a written response by mail, fax or by e-mail to our Global Gateway Certifications Sdn Bhd .

For your guidance, you may consider the following points:

- Environmental protection.
- Biodiversity conservation.
- Opportunities for employment.
- Provision of housing, sanitation, amenities and educational support.
- Company approach to community development.
- Participation in decision making.
- Any other issue, both positive and negative that you consider may be of relevance to the assessment.

Please direct your comments to:

Scheme Manager,
Global Gateway Certifications Sdn Bhd,
No.10, Jalan Rasmi 7,
Taman Rasmi Jaya,
68000 Ampang,
Selangor Darul Ehsan, Malaysia.

Telephone: +60 3 4256 2689

Fax: +60 3 4256 2687

Email: jamal@ggc.my / admin@ggc.my

Details on the audit team:

Muhd Jamalul Arif bin Hamid (Lead Auditor)

Educational background in Plantation Management and Marine Cargo Surveying with working experience in handling Quality & Quantity cargo survey for agricultural products such palm oil, soybean, maize and sugar. Also qualified and involved in sustainability and Management System (MS) auditing since 2011 for mostly sustainability schemes such RSPO, ISCC, MSPO, Global Gap, GMP, SMETA, ESCAS and second parties audit. Involved in RSPO P&C, NEXT and SCCS conducted in Malaysia, Indonesia, Colombia, Ecuador, Ivory Coast, Papua New Guinea and Middle East Country.

Completed ISO 9001:2008 Lead auditor in 2011, trained in ISO 19011 & 17021 requirements in 2014, Social Skill Auditing Conversion against RSPO, MSPO, ETI & SEDEX requirements on 2015, RSPO P&C Lead Auditor Endorsed Course on 2013, 2016 and 2019, RSPO SCC Course on 2015, MSPO Auditor Training on 2014 (3rd Batch) held by MPOB, MSPO SCCS Auditor Training on 2018, Basic Safety Training Course etc. Member of GGC MSPO audit team. Able to speak and understand Bahasa Malaysia and English.

Adnin Aminurrashid Bin Zilah (Auditor)

Graduate in plantation management with more than 10 years working experience in various plantation company and skills in Good Agricultural Practices (GAP) including Integrated Pest Management (IPM). Also, have more than 5 years' experience as an auditor / Lead Auditor in various schemes. Attended and successfully completed the MSPO Lead Auditor course conducted on December 2017. Involved in MSPO assessment since 2018 that conducted for many different companies in Malaysia. Successfully completed ISO 9001:2015 Quality Management System and ISO 14001:2015 Environmental Management System Lead Auditor course in 2017 and 2018.

Experienced in handling mineral and peat soil oil palm estate. Knowledgeable in chemical in control of weeds and pest & disease in Oil Palm Plantation sector. Understanding in Industrial relation and labour law. Attended OSH Act 1994 & Environment & related laws and regulations Training. Also participated in MSPO peer reviewer training conducted by MPOCC. Member of GGC MSPO audit team. Able to speak and understand Bahasa Malaysia and English.

Mohd Fadzli bin Bistamam (Auditor)

Post graduate qualification in Agricultural Engineering with more than 7 years working experience in Oil Palm Plantation Industry. More than 7 years of working experience in Oil Palm Plantation Industry with skills in Good Agricultural Practices (GAP) and Integrated Pest Management (IPM). Experience in managing estate workers, handling of mineral and peat soil and knowledgeable in chemical control of weeds and Pest & Disease in Oil Palm Plantation Sector.

Fully trained in similar agriculture certification programs such as RSPO, MSPO and ISCC. Completed and certified in ISO 9001:2015, RSPO Lead Auditor Course, RSPO Supply Chain Certification Training, MSPO Training, ISCC EU & Plus Basic Training, ISCC Waste & Residue Training and ISCC Plus Training. Involved in Oil Palm Sustainability Audit since year 2016. Involved in audits conducted in Malaysia, Indonesia, Papua New Guinea, Ivory Coast, India and Singapore. Member of GGC MSPO audit team. Able to speak and understand Bahasa Malaysia and English.

Baskaran Sankaran (Auditor)

Master of Occupational Safety & Health Risk Management from Open University Malaysia, Diploma in Mechanical Engineering and Management Programme. More than 20 years of working experience in various industries. Involved in RSPO assessment since 2014.

Involved in audits conducted in for many different companies in Malaysia and Indonesia. Completed ISO 9001:2008 and ISO 14001:2004 lead auditor course in 2006 & 2010. Also completed RSPO Lead Auditor training in December 2014. Qualified as Lead Auditor/Auditor in several certification programme such as RSPO, MSPO, ISO and etc. Member of GGC RSPO audit team. Able to speak and understand Bahasa Malaysia and English.

Comments received within 30 days from the date of this letter will be considered in this Assessment. Please include the following information should we need to contact you for clarification on any issues raised:

Name : _____
Address : _____
E-Mail : _____
Phone Number : _____
Summary of Issue : _____

Comment:

If you wish your comments to be treated confidentially or remain anonymous, please mark your reply “CONFIDENTIAL”.

We thank you for the participation and feedback.

Yours Sincerely,

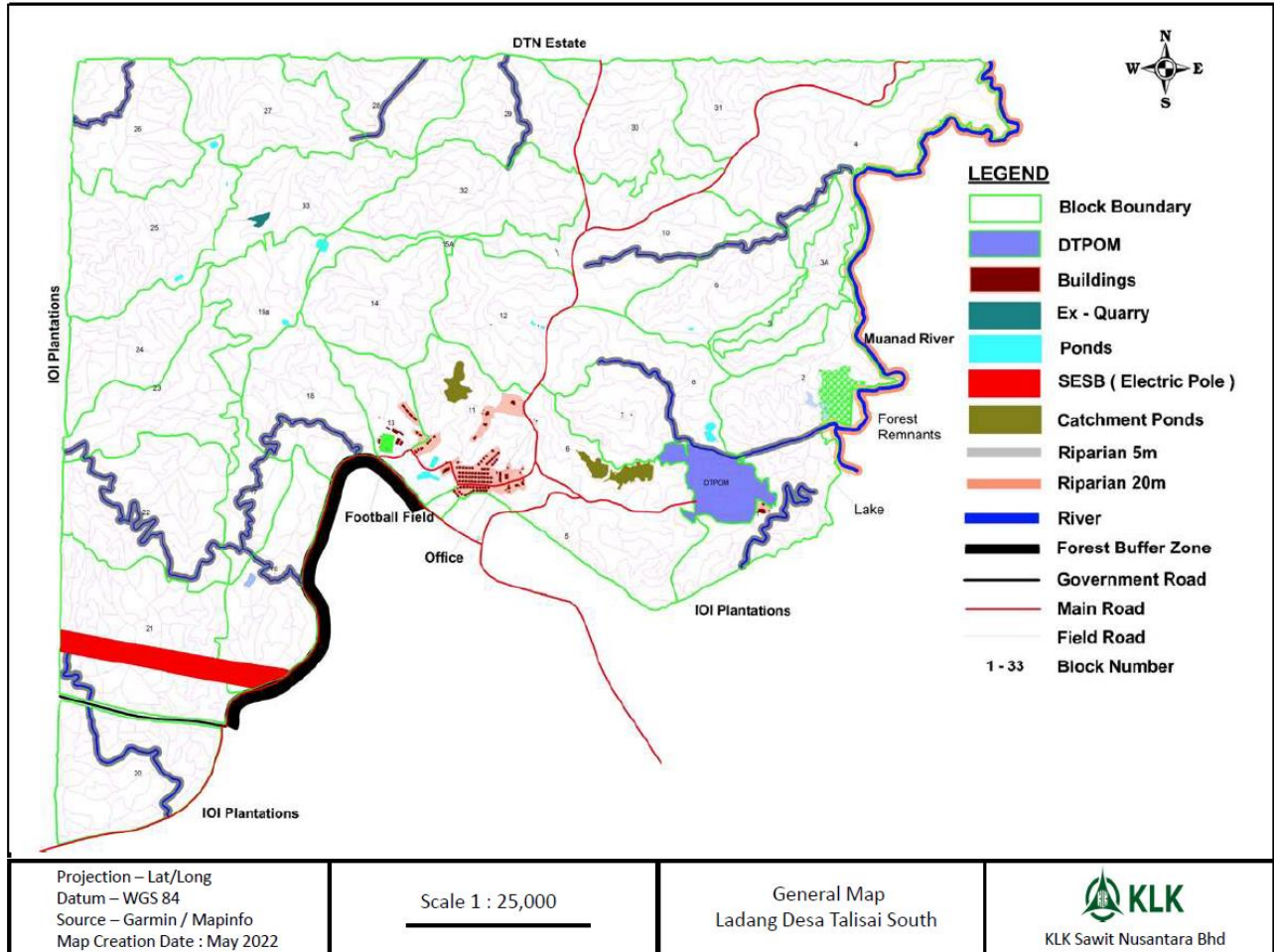


Muhd Jamalul Arif,
Scheme Manager,
Global Gateway Certifications Sdn Bhd

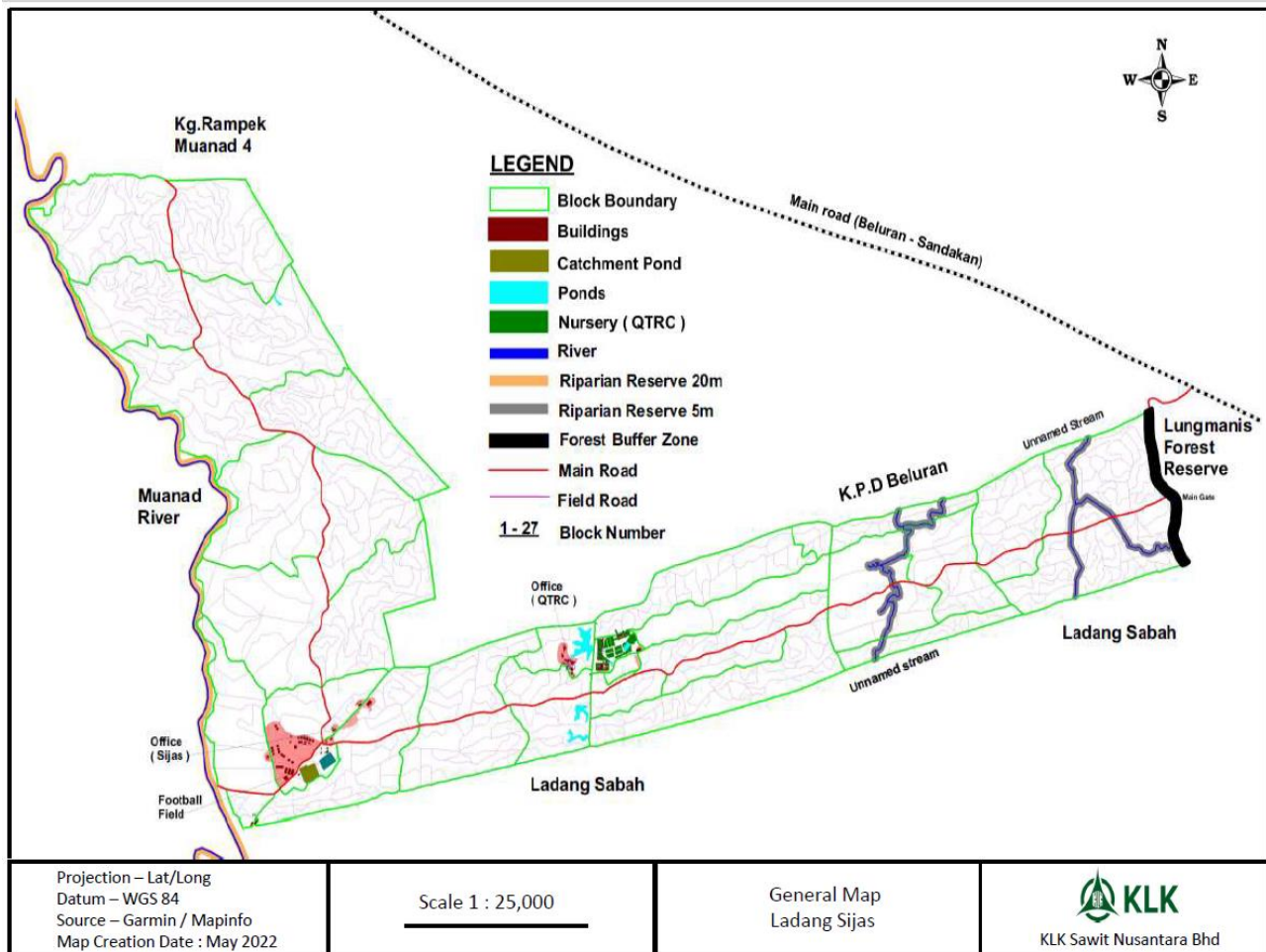


Annex 1 – Location Maps

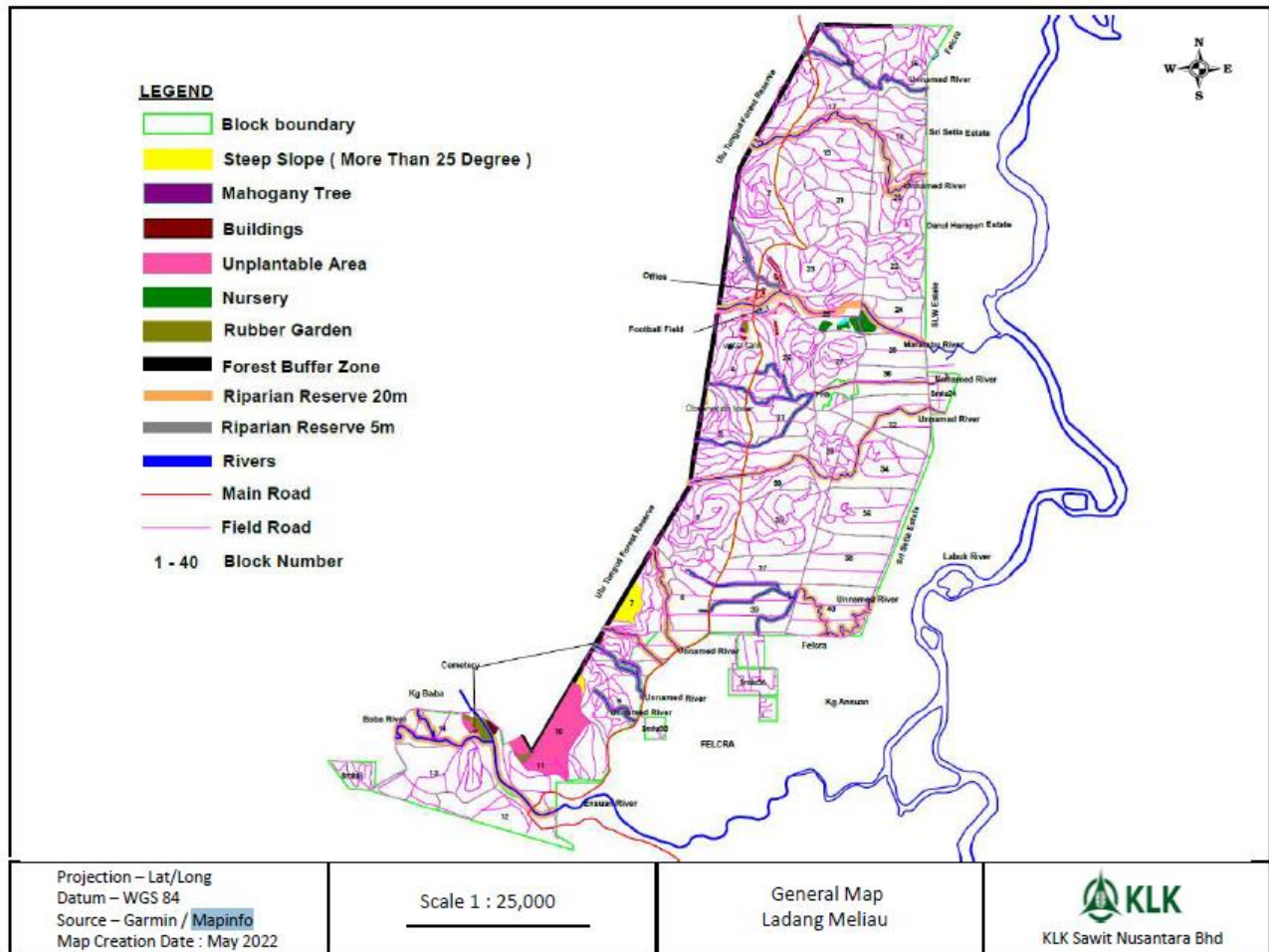
1. Desa Talisai Palm Oil Mill



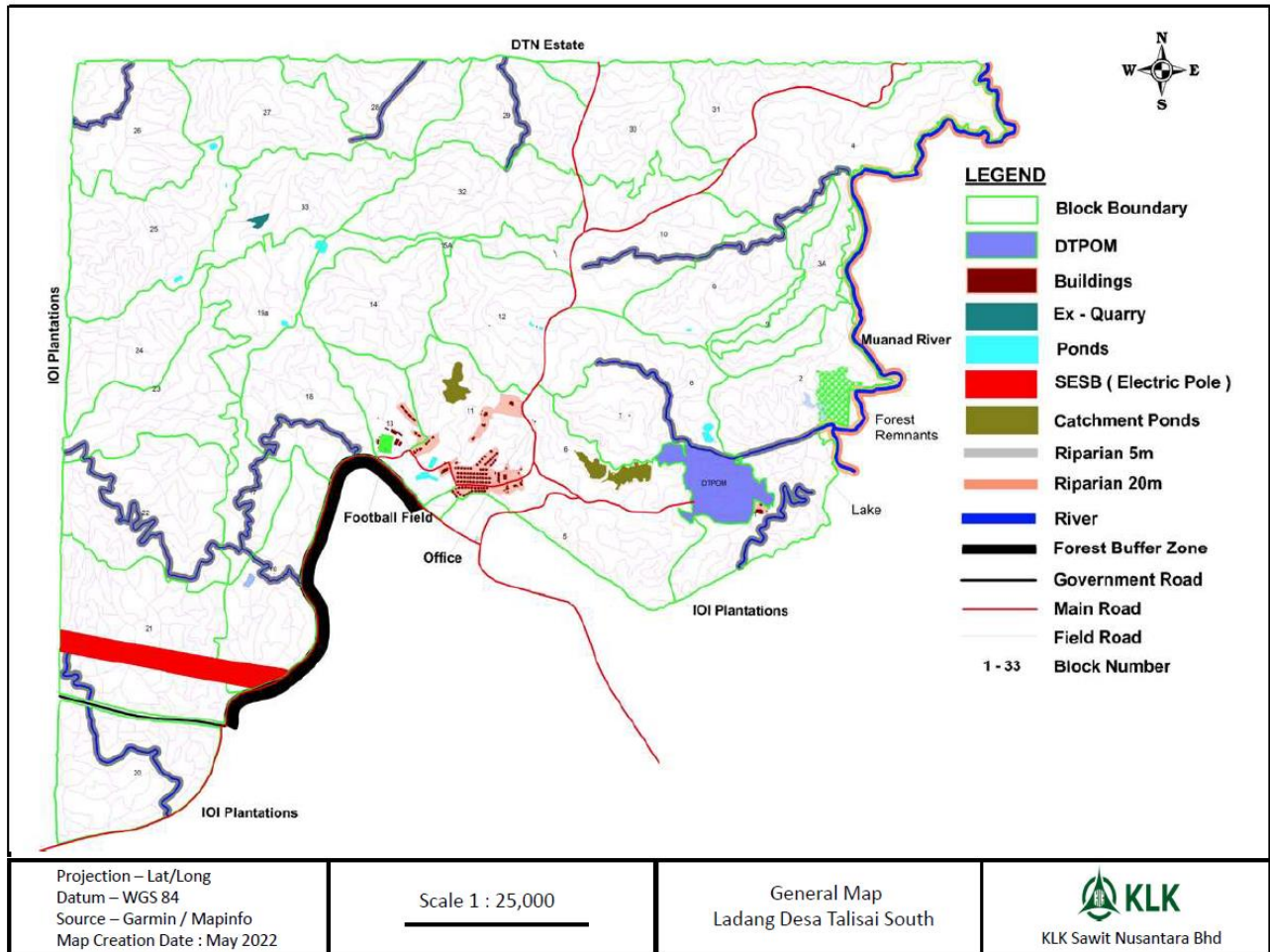
2. Sijas Estate



3. Meliau Estate



4. Desa Talisai South Estate



5. Desa Talisai North Estate

